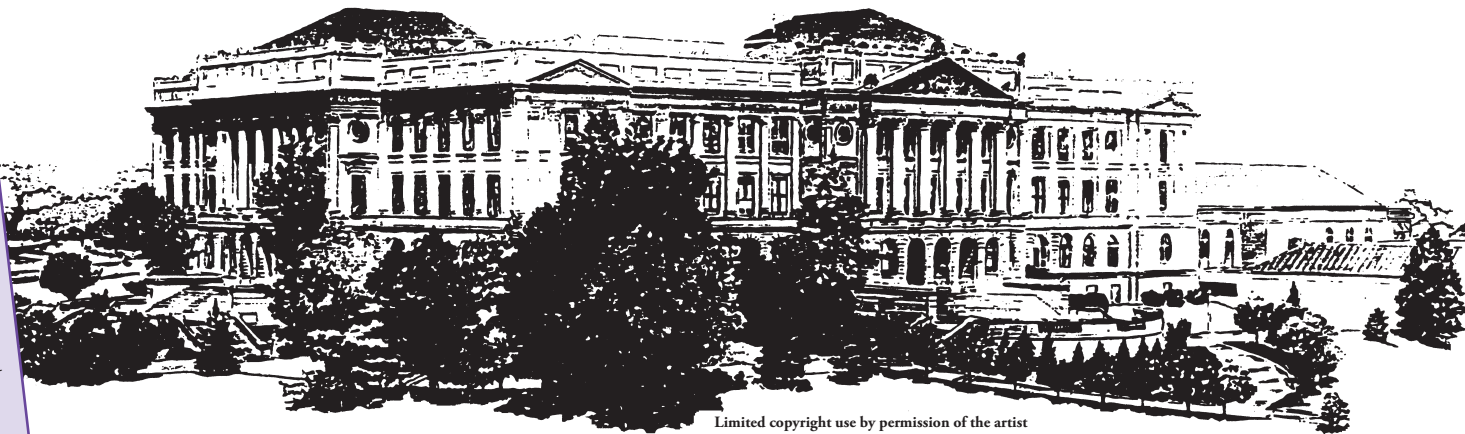




★ **New Inside!**
The Fall 2005 issue of the Alumni Register is included in this year's annual report. See pages 10 - 12.



Limited copyright use by permission of the artist
Sue Olson-Mandler, Bellevue, Nebraska

THE CENTRAL HIGH SCHOOL FOUNDATION JULY 1, 2004 - JUNE 30, 2005 ANNUAL REPORT

From The President

Dear Central High Supporters:

It's an exciting time for the Central High School Foundation! This February, we moved into our new office located above Goldberg's restaurant at 5008 1/2 Dodge Street, Suite 200. Having operated from a private residence for the past six years, this is the first time the Foundation has had a dedicated office space.



Rusty Crossman in front of the new office.

We now have enough storage space for all of our records, a secure location for the Alumni Association's collection of historical memorabilia, enough desk space to accommodate staff and several volunteers and a small conference area available for meetings related to Central. We are confident this new space will allow us to better serve the students, teachers, alumni and supporters of Central High School.

In another exciting initiative, the Foundation is evaluating its current and future roles through a comprehensive strategic planning process. We are also exploring new ways to raise funds to underwrite scholarships and teacher projects at Central as well as provide for the day-to-day expenses of the Foundation. This process is expected to conclude in December, and I look forward to sharing with you the results of this effort.

As we plan for the future of the Foundation, we continue to draw on our original mission for guidance. We remain deeply committed to supporting the rich academic tradition started at Central 146 years ago. We invite you to join us in this effort and appreciate your generous donations of time, energy and financial support.

Sincerely,

Rusty Crossman

Dr. Rusty Crossman '66
President

Foundation Moves To New Office Space

On February 14, 2005, the CHS Foundation officially moved to its new home located above Goldberg's restaurant at 5008 1/2 Dodge Street, Suite 200. "It's the greatest location and the space is ideal for us," Foundation Executive Director and Treasurer Terry Price said. For a little over six years, she ran the organization from her home.



Inside the new Foundation office at 5008 1/2 Dodge Street.

The new office features a walk-in safe which houses the Foundation's OBooks and the Alumni Association's historical memorabilia, a small conference/meeting area, a large main office and a smaller secondary office, a kitchenette and bathroom and numerous storage closets.

Terry credits longtime Central supporter Dave Van Metre with locating the space. "One day, Dave called me after having lunch at Goldberg's," she said. "He had just talked to the building owner and learned the space above the restaurant would be available for rent at the end of the year. Soon after, Rusty, my husband and I made an appointment to see the space and immediately fell in love with it!"

Additional Central supporters helped furnish the office. "I placed an appeal for furniture in last year's annual report," Terry explained. "Right away, I started getting calls from many generous alums and friends. I accepted donations of furniture and office equipment with the understanding that if I couldn't use their items, I would offer them first to Central High School and second to Omaha Public Schools (OPS)."

Keith Wagner '72 is one of the donors who responded to Terry's request. "I donated work tables/desks, modular partitions with built-in lateral files and a refrigerator left over from a business that was no longer active," he said. "I saw Terry's request in the annual report and couldn't think of a better use for these items."

Another large donation was received from Union Mortgage. Central alums Pam Roberts Leaman '79 and Debbie Marshall Lentz '71 arranged the donation which included two truck loads of office equipment ranging from typewriters and telephones to desks, chairs and tables. "The bank had just built a new office and purchased all new furniture, so the timing was perfect," Pam said. "I understand that all of our items found a new home and are very much appreciated!"

With all of the donations coming in, Terry now had to find a way to store the items until a new office space was located. Omaha Public Schools Superintendent Dr. John Mackiel learned of the situation and immediately called Terry.

"There was storage space in one of the OPS warehouse facilities that was available for the short duration needed for the Foundation's furniture," said Dr. Mackiel.

After the Foundation found the office above Goldberg's, Terry graphed the layout of the space and measured all of the furniture in storage. She selected the items that worked best and donated the rest to Central High School and OPS. Some of the items donated to OPS are being used in one of the high school facilities currently being remodeled.

Another Central alum, Steve Nogg '69, generously helped the Foundation move in to the new office. Steve's company, I-Go Van & Storage, provided five movers and two trucks to move the furniture from storage and the Price residence to the new office. "They had us moved in a few hours, and they did a TERRIFIC job. We are so thankful for Steve's generosity!" Terry said.

The Foundation office is open daily. However, hours may vary since Terry is the only full-time employee. Visitors are asked to call ahead. "I love having visitors, but I would hate for someone to stop by when I am out of the office," explained Terry.

Foundation Seeks Volunteers For Projects

The Foundation is currently seeking volunteers to help with computer and database work in the new office. Projects include going through the OBooks to make sure all Central alumni are included in the database and developing more comprehensive alumni records.

"We want to add all of the activities students were involved with," explained Executive Director Terry Price. "Then, when special events come up, such as the Latin Club Centennial Event or A Cappella's upcoming 75th reunion, we can contact everyone who was involved with these activities."

Angela Friedman '05 has been volunteering in the office for several months and has enjoyed the experience. "It's a great way to earn volunteer hours for school, and it's really fascinating to look at the old yearbooks. I looked up my dad [Scott Friedman '67] and found out what activities he participated in. He didn't even remember some of his!"



Terry Price and Michael Smith '05 Class President

Michael Smith '05, President of the Class of 2005, spoke to National Honor Society members and other class officers about volunteering at the Foundation. "It's a great way to get volunteer hours for the National Honor Society's honor corps - and help Central at the same time," he said.

Anyone interested in volunteering is asked to call the Foundation office at (402) 556-1996.

Thank You To Everyone Who Contributed To The Move!

- All Makes Office Equipment - Larry Kavich '63
- Fred & Marcia Backer
- Ellie Rasmussen Clure '47
- Ryan Ellis '97
- Richard Fellman '53
- Elizabeth McNichols '77
- Lindsey Miller Lerman
- Mary Moberg '51
- Tom & Terry Price
- Union Mortgage - Pam Roberts Leaman '79 & Debbie Marshall Lentz '71
- Omaha Public Schools - Dr. John Mackiel
- Muriel Frank Steinberg '36
- I-Go Van & Storage - Steve Nogg '69
- Keith Wagner '72
- West Center Psychiatric-Aveva Hahn Shukert '68
- Joy Winkler



Steve Nogg '69, I-Go Van & Storage



Principal Jerry Bexten

Foundation Plays Key Role In Supporting Central

With the completion of the \$16 million renovation and the grand opening of Seemann Stadium and the multi-purpose field, students returning to Central High School this fall will discover a revitalized campus. According to Principal Jerry Bexten, the Central High School Foundation played an important role in bringing about the campus upgrades.

“The Foundation helped us get the \$16 million bond passed,” Jerry noted. “The Foundation has been extremely supportive of the staff and students at Central and is an ideal vehicle for alumni and other benefactors to support the school.”

The Foundation also facilitates the donation of hundreds of thousands of dollars each year to support scholarships and special projects. Since it was founded in 1996, the Foundation has provided approximately \$558,000 for scholarships and \$960,000 for special projects. Examples of the projects funded include updates to the chemistry and physics labs, new computers and listening stations in the foreign language rooms.

“I’ve never seen the extent of alumni and parental support that Central has in terms of time and dollars,” added Jerry.

Campus Update

■ The \$16 million renovation to Central, made possible by a bond issue passed several years ago, is now complete. The renovations include new air conditioning and electrical wiring, kitchen and gym additions and five new classrooms on the fourth floor.

■ The new stadium and multi-purpose field was dedicated in a grand ceremony on August 21. The stadium is named in honor of Lee Seemann '38, a decorated World War II pilot who, along with his wife Willa (Davis) Seemann '43, provided financial support for the \$12.1 million project.

Mission and Role of the Central High School Foundation

The mission of the Central High School Foundation is to improve the education of present and future students at Central High School. The Foundation's responsibilities include:

- managing the scholarship endowment fund
- maintaining an extensive database of alumni, parents, staff and friends
- providing assistance with class reunions
- developing and hosting a web site for groups that support Central
- assisting all groups that support Central
- sponsoring the Senior Recognition Event
- sponsoring the Teacher and Student of the Year scholarships
- operating the Foundation office
- identifying needs and developing strategic projects to improve Central
- raising funds for Central's needs, whatever they may be



Thank You To Our Part-Time Central Students!

Katie Fitch (left) has worked in the CHS Foundation office for the last year, including this summer. She will attend Kansas University this fall. Katie O'Banion (right) just started and will work every day after school during the upcoming year.

Planning Ahead for Central's Future

There are many ways to give to the Central High School Foundation, now or in your estate plan. You may wish to consider one of the following options:

- **Bequests:** For many donors, making a gift through your estate is the most realistic way to provide a substantial contribution to the CHS Foundation.
- **Gifts of Insurance/Retirement:** You can amend an existing insurance policy or retirement plan to name the CHS Foundation as one of your beneficiaries.
- **Appreciated Securities:** Your outright gift of long-term, appreciated securities (stocks, mutual funds and bonds) is exempt from capital gains taxes.
- **Gifts of Real Estate:** You can make a gift of commercial or residential real estate to the CHS Foundation and receive substantial financial benefits.
- **Charitable Gift Annuity:** A gift annuity is a contract between the donor and the CHS Foundation that provides the donor a guaranteed payment for life and a charitable income tax deduction. Deferred gift annuities are also available.
- **Charitable Remainder Trust:** A charitable remainder trust provides a lifetime income and a charitable income tax deduction.

For more information, please contact your financial planner, lawyer or the CHS Foundation office at 402-556-1996.

Central High School Foundation Board Of Directors

President	Dr. Rusty Crossman '66
Secretary	Jerry Bexten, CHS Principal
Alumni Association Representatives	Mary Moberg '51 Merrilee Moshier Miller '66
CHS Representative	Harry Gaylor
Community / Alum Representative	Dr. Barbara Waldron Coffey '47
Current PEP President	Don Erikson
Past PEP President	Joy Winkler
Executive Director & Treasurer	Terry Price

Board Of Counselors

Keith Bigsby	Larry Kavich '63
Bill Cordes '66	Carole Grube Langan '64
Brenda Warren Council '71	Susan Strauss Lebens '70
Dan Daly	Rocky Lipp Lewis '65
Janet Darst	Sibyl Myers '69
Mary Ellen (Marti) Martison Engdahl '48	Paul Ochsner '69
Sandy Lipp Epstein '67	Merle Rambo '69
Beverly Bloom Fellman '59	Mary Lynn Reiser
Sandy Friedman '64	Betty Cohn Sanford '42
Marc Kraft '66	Dick Slosburg '67

How To Reach The Foundation And The Organizations Under Its Umbrella

Central High School Foundation
P.O. Box 31610
Omaha, Nebraska 68131-0610

NEW OFFICE ADDRESS
5008 1/2 Dodge Street, Suite 200
Omaha, NE 68132-2980

Phone: (402) 556-1996
Fax: (402) 556-9557
Email: chsfoundation@cox.net

Web Site: www.centralhighomaha.org

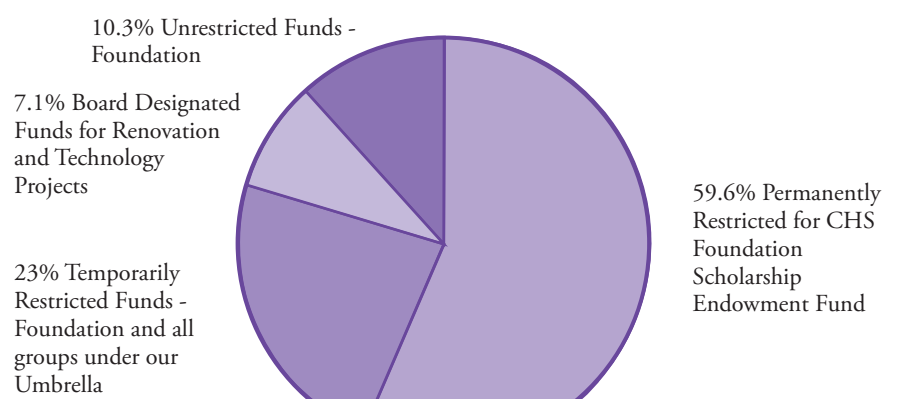
Visiting our web site is a great way to stay in touch with the groups who support CHS. You can also browse our list of LOST alumni and staff and let us know if you know the whereabouts of anybody on the list.

Foundation Financials

<u>Income*</u>	<u>\$ (to the nearest \$1K)</u>
1. Unrestricted investment income (CHSF)	\$26,000
2. Permanently restricted to Scholarship Endow Fund Contributions (CHSF)	\$35,000
3. Unrestricted contributions (CHSF)	\$92,000
4. Temporarily restricted contributions (CHSF)	\$264,000
5. All under our umbrella (AA, VOICE, JSPA, PEP Auction, Band Parents)	\$92,000
	\$509,000
<u>Expenses*</u>	<u>\$ (to the nearest \$1K)</u>
1. Operating costs (CHSF)	\$98,000
2. Scholarships & grants paid from Temporarily Restricted Funds (CHSF)	\$195,000
3. Scholarships & grants paid from Unrestricted Funds (CHSF)	\$153,000
4. All under our umbrella (AA, VOICE, JSPA, PEP Auction, Band Parents)	\$132,000
	\$578,000

*Income & Expenses for fiscal year 7-1-2004 through 6-30-2005.

Net Assets As Of June 30, 2005



Under The Umbrella

Organizations under our umbrella enjoy our 501(c)3 nonprofit status and assistance in raising and managing funds. To learn more about the CHS Foundation, or any of these organizations, please visit the Foundation web site at www.centralhighomaha.org.

Central High School Alumni Association



Larry Albert '51, co-chair of the Alumni Association Historical and Memorabilia Committee.

Acknowledging with gratitude the outstanding education they received at Central, the members of the Alumni Association seek to "keep Central Central." "We want to be involved with activities," said Mary Moberg '51, the organization's president. "We still care, and we are very proud of that school."

The Alumni Association helps graduates stay connected to Central through the publication of its Alumni Register, which is mailed to more than 21,000 alums. The CHS Foundation provides database and mailing assistance.

In addition, the Alumni Association selects inductees for the CHS Hall of Fame, maintains an alumni library and collects and stores historical memorabilia. Approximately 100 titles are currently part of the alumni library, according to Library Arts Chair Cheryl Church Roche '41. "It's quite an amazing collection," Cheryl said. The books are featured in two display cases in Central's courtyard and are also available to students in the school library.

The Alumni Association's historical collection was recently transferred from Barry Comb's (CHS 1950) house to a dedicated space in the CHS Foundation's new office. "When Dr. Crossman and I were looking for office space, we made it a priority to find a location that had a safe and secure space for this wonderful collection," Terry Price said. Among the items included are textbooks, yearbooks ("OBooks"), photographs, football uniforms, pennants and notebooks.

"Terry Price has been an enormous help to the Historical Committee in gathering archival materials for various projects," said committee co-chair Larry Albert '51. "Terry's support of the Historical Committee's functions is well above and beyond the call of duty and is of tremendous value to us."

PEP (Parents, Educators and Pupils)

Organized in 1979, the PEP organization is Central's parent-teacher organization. The approximately 200-member strong organization raises funds to support scholarships and teacher grants for special projects.

Funds are generated through the sale of refreshments at fine art events and CHS specialty items such as T-shirts and sweatshirts. PEP also holds an annual Scholarship & Teacher Grant Auction. The proceeds from the auction help fund scholarships for seniors, teacher grants and the Foundation's Scholarship Endowment Fund. The 2005 event, held on March 19, raised \$25,000.



Patty Packard (left) and Joy Winkler (right), co-presidents of PEP, at the 23rd Annual PEP Auction.

"The CHS Foundation provided us with the database containing names and phone numbers," said PEP Co-Chair Joy Winkler. "Terry Price keeps us all going in the right direction."

In addition to raising funds, PEP helps plan and provide assistance for many of Central's annual events including the Post-Prom party, the Holiday Faculty Tea, freshman orientation, the Senior Recognition event and Purple Feather Day which honors students with a cumulative grade point average of 3.25 or higher.

CHS Band Parents

An organization comprised of both parents and students, CHS Band Parents assist with a variety of band activities including the transportation of instruments, organizing of volunteers and support for the band at events such as football games and parades.

"We make sure kids have the best musical experience possible, and we support the staff," said Terry Anderson who has been involved with the organization for the past four years.

According to Terry, the new multi-purpose field will provide even more opportunities for band students. "The students in the marching band were really excited about participating in the grand opening of the field on August 21. This was the first time they've been able to march in two years!"

CHS Band Parents also coordinates several fundraising efforts including the popular annual Swing Dance. One of the organization's goals is to raise funds without asking the kids to sell products. "This past year, using the CHS Foundation's database, we sent out an appeal letter to band parents asking for donations," Terry said. "The letter was very successful and generated 60 percent of our annual fundraising goal."

Doug Bottger, co-president of CHS Band parents, cites the CHS Foundation's 501(c)3 status as one of the contributing factors in the organization's fundraising success. "We have many generous donors who support the band financially," Doug said. "However, donors are more inclined to write a slightly larger check because of the tax advantages of donating to a not-for-profit. The Foundation is a real benefit to us."

V.O.I.C.E. (Volunteer Organization Investing in Choral Excellence)

Central's V.O.I.C.E. organization supports and encourages students who are interested in vocal music. The organization is led by a dedicated executive committee of approximately 12 parents and teachers and supported by additional parents who help with individual events.

According to Mark Flemmer, who was co-president of V.O.I.C.E. during the 2004-2005 school year along with his wife, Janet Flemmer, the organization supports choral students with a wide variety of activities.

"Throughout the year we help with concerts and musicals and provide transportation, carry equipment, record performances, publish a newsletter and do whatever we can to help," Mark said. "We helped purchase the choral department's grand piano and are responsible for keeping it in good condition. We also provide three to four scholarships each year."

V.O.I.C.E. also helps organize and staff the annual Madrigal Faire. This special performance opportunity is the organization's largest fundraiser.

In March of 2006, V.O.I.C.E. is planning a special Diamond Jubilee Celebration to commemorate the 75th Anniversary of the A Cappella Choir. The event will be held March 25-26, 2006 in conjunction with PEP's celebration of the arts week featuring the Scholarship & Teacher Grant Auction.



Activities include a morning or early afternoon rehearsal at the Joslyn Art Museum on Saturday, March 25 and a Sunday, March 26 concert in Central's auditorium at 3 p.m. Current and former A Cappella members are encouraged to participate.

"We had a similar event with alumni participation in 2000," said Central Vocal Music Director Lyn Bouma. "More than 150 people came from all over the United States."

Photo of the first Central High School A Cappella Choir. Taken from the 1931 Central High School yearbook.

Athletic Booster Club

The Athletic Booster Club was founded to support the athletes and coaches at Central. This support includes organizing four sports banquets each year, coordinating the membership program, organizing an annual golf outing and providing financial assistance to athletic teams.

"We help wherever we are needed and meet any needs not covered by OPS," said the organization's co-president Carol Kuzelka. "We don't want the coaches to have to use their own money to buy team equipment, or for the students to have to do a lot of fundraising," she said.

On June 6, the Athletic Booster Club had its third annual golf outing at Ironwood Golf & Country Club. Approximately 120 golfers participated in the event which raised \$13,000.

A large portion of the proceeds from this year's golf outing will be used to purchase a four-wheeler for maintenance of the new multi-purpose field. "We will help with many of the needs associated with the new stadium and field," Carol said. Past projects funded by the Athletic Booster Club include golf bags for the golf team, wrestling uniforms for the wrestling team and a digital camera for the athletic department.

The organization's finances are managed by the CHS Foundation. "If we need a check, we just contact Terry Price," Carol said. "The Foundation is very easy to deal with."



G.E. "Doc" Moller was recognized for his support of the CHS athletic program while serving as the school's principal.



Randy Milnes, Ron Hofmeister, G.E. "Doc" Moller and Gene Claxton (from left to right) compose a foursome at the Golf Outing in June.

Foundation Seeks Central Memorabilia

Tired of tripping over your boxes of old school memorabilia? Don't throw away those precious memories, donate them to the Alumni Association's historical archives! The Foundation uses old yearbooks daily as reference material and the Alumni Association is currently seeking the following items:

- Photographs (must be clearly labeled)
- Any OBooks, particularly for all of the years prior to 1901 plus 1903, 1966, 1983, 1986 and 1991

Visit us on-line at www.centralhighomaha.org

Class Reunion News

Class of '85 Plans August Reunion

The Class of '85 held its 20th reunion over a three-day weekend August 12-14, 2005. Planned activities included a "meet and greet" reception, a dinner dance, tour of Central and a family picnic.

"My goal was to get as many classmates from 1985 to attend as we could and to reunite with old friends and meet new ones," said organizer Michael Moore '85. "The class reunion almost did not happen this year. Myself and five other classmates and friends decided to take on this task. We have accomplished a lot, and the reunion was a success."

According to Michael, Terry Price's help was critical to getting the reunion organized, especially in light of the short timeframe. "Terry has been a huge help with my committee. I don't know what we would have done without her. Kudos to Terry!" he said.

Class of '95 Reunion Planned for September

According to Clark Lauritzen, president of the Class of '95, Terry Price was instrumental in helping notify classmates about the 10-year class reunion he is organizing for September 2-3, 2005.

"Terry provided the database, printed labels for us, helped stuff envelopes and made it possible for us to take advantage of the Foundation's bulk mail rates," he said. "She also posted a notice regarding the reunion on the web site and updated the database as new information came in."

Of the approximately 360 students in the graduating class, the Foundation was able to provide current addresses for 270. "That's pretty good considering the average person has moved seven times since graduation," Clark said.

On Friday night, September 2, the reunion will feature an evening dinner reception and tour at Central followed by the first football game to be played in the new Seemann Stadium. After the game, classmates are invited to attend a mixer in the Old Market. The reunion concludes on Saturday with a luncheon at Rick's Boatyard.

Class of '51 Meets in New Office Space to Plan Reunion

The Class of '51 is among the groups and organizations now holding meetings in the CHS Foundation's new office. The class is coordinating its 55th reunion which is tentatively planned for the first weekend in October 2006.

"This being our 55th reunion, the pace is going to provide more time for renewing relationships than focusing on day and night-filling rapid-pace events," reported Larry Albert '51. "Nevertheless, we are sure the activities planned will be worthwhile, entertaining and enjoyable."



Gianna Schuetz (center) and Gia Ciummo Schuetz (right) meet with Terry Price (left) in the Foundation office. Gia is the Class of '85 Secretary and helped to plan the reunion from her home in Norway.

Class of '80 Proves You Can Plan A Long-Distance Reunion

Grant Gier, Vice President of the Class of '80, recently organized his classes' 25th reunion from his home in Chicago. Despite the distance, it was much easier to plan than the class' 10th reunion.

"For the 10th reunion we had to rely on old class lists," Grant said. "For this year's reunion, Terry Price used the database to run a list of current addresses. We'd update each other as new information about classmates came in. She also announced the reunion on the web site."

Out of about 376 classmates, Grant was able to contact 270 regarding the reunion held June 10-11, 2005. Attendance was strong at the event which featured a golf outing at Miracle Hill Golf Course, a tour of Central and a dinner at DJ's Dugout.

"Central provided us with a strong foundation," Grant commented. "We all have many fond memories and are interested in the new construction and what is happening today."

Class of '94 Donates Leftover Reunion Funds to Foundation

Featuring a dinner at Rick's Boatyard and a pancake breakfast, the 10th reunion of the Class of '94 was held July 24-25, 2004. Approximately 125 people attended the two-day event.

"The Foundation was very instrumental in making our reunion happen," said organizer Jennifer (Berg) Adams '94. "In fact, there was no way we could have pulled it off without the help of Terry Price. She was just the best – so friendly, organized, quick to respond to all my questions and so on top of everything."

Following the reunion, the class had some remaining funds leftover. Jennifer and her classmates decided to donate them to the Foundation. "I thought it was a great way to give back to Central and help support the school," Jennifer said. "We also thought the donation might help leverage additional money for the Foundation's First Class Challenge."

Class of '53 Establishes Annual Brunch to Stay Connected

Members of the Class of '53 had so much fun at their 50th reunion that they decided to get together on an annual basis. "Having a brunch every year helps bridge the gap between the regular reunions held every five years," said organizer Kay Corell '53. "Most of the people who attend are local, but some do come from out of town."

The class meets for brunch at a local restaurant the first Saturday in June. Past locations have included UNO and the Crowne Plaza.

"Terry Price provides the mailing labels which is a big help," Kay said. "My daughter is planning a 20-year reunion for another high school, and she is having a really hard time finding her classmates."

Though they have gone their separate ways since graduation, Central provides a strong link that still connects the Class of '53. "Central goes back so far," Kay explained. "There were fewer high schools back then, and Central was the best in the city. It really influenced us and prepared us for life."

Weight Equipment Donated to Central

Thanks to the Van Metre family, Central athletes have the opportunity to train their bodies using state-of-the-art weight equipment. In 2000, Dave and Carol Van Metre and their sons Dave '82 and Jim Van Metre '81 decided to donate weight equipment to update Central's weight room. "My two sons went to Central, and we decided to do this as a family," Dave Van Metre said.

In 2004, a new addition was built at Central which included space for a larger weight room underneath the basketball court. The Van Metres again donated weight equipment to furnish the room. Both donations were made through the Central High School Foundation.



Dave Van Metre (left) and CHS Principal Jerry Bexten (right) give a tour of the CHS weight room.

Class of '54 Wins First Class Challenge

Each year, the CHS classes holding reunions are invited to participate in the First Class Challenge, a friendly competition to raise money for the Foundation's day-to-day operating expenses. At the end of the year, the class that raises the most money wins.

The Class of '54 won the Foundation's 2004 First Class Challenge with a donation of nearly \$5,000. This enterprising class raised funds through a letter sent to classmates as well as the donation of money left over from its August 2004 reunion. "We are very proud of Central," commented reunion organizer Tom Bernstein '54. "It has a long tradition and is still a wonderful school."

In addition, Fred Nelson '54 recorded and sold a CD featuring the piano music of former classmate and best friend Terry Moshier '54. A talented athlete and pianist, Terry privately recorded an album of piano solos entitled "Terry Moshier Plays for His Friends." Fred had a copy of the album, but it was badly damaged. He contacted Terry's brother who was able to provide an unplayed album which Fred used to make a CD.

He then sold the CDs at the reunion for a minimum donation of \$20. Fred donated the money raised – more than \$1,000 – to the CHS Foundation's Scholarship Endowment Fund in memory of Terry Moshier. Fred hopes his CD project will inspire others to honor the memories of former alumni, while at the same time, to raise funds to support the hopes and dreams of future Central grads.

The Class of '54 donated their left over reunion funds in memory of their deceased classmates:

Miles Bell	Chere (Glas) Hunt	Russell Skavari
George (Chuck) Boetel	Larry Lange	Marlene (Jenson) Southwell
Monte Bradford	Carl Linn	Myrna Sullivan
Larry Carman	Robert Madgett	Georgia (Comstock) Tombling
Marshall Deneberg	Samuel Marvin	Patricia (Means) Ver Helst
Connie (Tarascio) Feagins	Terry Moshier	Joe Warner
James Focht	John Radicia	Judy (Rosen) Weiner
Gail Fricke	Harlan Rosen	Barbara (Sobrin) Wertheim
John Hanna	Larry Schwartz	Tom Wheeler
Norman Hudgrins		

1944 Central Football Team Achieved On and Off the Field

In the fall of 2004, to mark the team's 60th anniversary, Fred Abboud '45 decided to reconnect with the members of Central's 1944 varsity football team. "One loss to Tech High cost us the city title," recalls Fred, who played fullback and was inducted in the Nebraska Football Hall of Fame in 1985. "But, the team had some outstanding individuals who went on to achieve great things in life."

With the assistance of Terry Price, Fred was able to locate 16 out of 28 members of the 1944 team. A small group attended the football game between Central and Creighton Prep on October 22, 2004.

Following graduation from Central, many of the players served in the armed services. A large percentage of the team also earned college degrees. Herb Reese '47, Charles Beber '46 and Jerry Ries '46 became medical doctors. Russ Gorman '45 earned a doctorate degree and ran the Physical Education Department at Illinois State University.

Ed Zorinsky '44 served as mayor of the City of Omaha and later, as a U.S. Senator. Fred Hawkins '44 became one of the largest building contractors in Nebraska. A hall in the Omaha Civic Auditorium was named after Charles Mancuso '44 for his exceptional service to the city which included management of the Parks and Recreation Department, Rosenblatt Stadium and the Omaha Civic Auditorium.

Fred Abboud, who became an insurance broker, credits Central with helping the team learn the value of discipline and education. "We had great teachers and faculty," he said. "They were all business."

Edward G. Drdla '41 Remembers Foundation In His Estate

Central High School received a generous gift of \$221,000 from the estate of Edwin G. Drdla '41. "Edwin was single and had no children," said Joe Latoza, the investments advisor who assisted him in preparing his estate.



Edward G. Drdla '41

"He had a hard time deciding what to do with his sizable estate," Joe said. "We prepared a list of foundations for him to review and he selected the Central High School Foundation as one of the beneficiaries." The gift was made through the CHS Foundation because of the tax benefits associated with donating to a 501(c)3 organization.

Joe remembers Ed as a mechanical genius who could make anything with his hands. After he graduated from Central, Ed attended Iowa State University. He worked as an engineer at OPPD for many years. Ed had a stroke approximately ten years ago and lived in a nursing home at the time of his passing.

Foundation Helps Alumni Connect With the Past

An important function of the CHS Foundation is to help alumni connect with their school days at Central. Examples of the assistance provided by the Foundation include locating and reproducing OBooks, help contacting schoolmates and family members and assistance with arranging tours of Central.

Terry Price recently had the pleasure of assisting Tom Fike '37. Tom requested help obtaining a copy of his OBook, which he had not seen for years. Terry made a copy and mailed it to him at his home in Louisiana. Terry also contacted Principal Jerry Bexten, who gave a wonderful private tour of Central to Tom and his wife, while they were visiting in the area to attend his UNL Law School reunion.

According to Terry, the Foundation frequently receives requests for information. "Using our database, I have helped create mailing lists for a variety of events such as plays at Central, the Road Show, a baseball game between former alumni and current players and the Latin Club's Centennial celebration," said Terry. "People love attending these things – they just need to know they're happening!"

Terry also helped with the dedication of the Alice Buffett Middle School. She provided copies of OBooks from the years Alice taught at Central. Pictures from the OBooks were featured in a video shown at the ceremony. In addition, she contacted several of Alice's former students so they could be interviewed and included in the video.

Because of privacy concerns, the Foundation does not release information about specific individuals upon request. However, the Foundation will notify persons being sought so they have the opportunity to follow-up if they so choose.



Tom Fike '37 poses in front of the staircase, which was once designated for boys only. Girls used the opposing staircase.

Tom Fike '37 returned to Central High School to give his wife, Evelyn, a tour of the building. They are seen here outside the west entrance.

Teacher And Student of the Year Receive Honors

Since 1999, the CHS Foundation has sponsored the annual Senior Recognition Event which honors the Teacher and Student of the Year. The Foundation's Board of Directors selects the Teacher of the Year from among the talented educators who have been nominated. Anyone can nominate a deserving teacher to be recognized.

This year's Teacher of the Year is Scott Wilson who has taught history at Central since the fall of 1997. He currently teaches 9th grade honor students and advanced placement courses for upper classmen. The students who nominated him said they "really enjoyed his class" and they developed "a better appreciation for history."

"I was thrilled and totally stunned with this honor," said Scott. "It means a lot to me." At the time of this publication, Scott was in Oregon attending a field trip for a graduate course he is taking at Hastings College. The class followed the trail of Lewis & Clark to Oregon and plans to return on the Oregon Trail.

Students nominate themselves for the Student of the Year award by completing the Foundation's nomination form. Candidates list their accomplishments and activities, both inside and outside of school, and submit an essay. All personal information is removed from the forms which are distributed to the Foundation's Board of Directors. The board then votes for its top six choices. The six nominees receiving the most votes are passed along to the Foundation's Board of Counselors who make the final decision.

The winner receives a \$1,000 scholarship and a marble paperweight inscribed with his or

her name as "Student of the Year." The 2005 Student of the Year is Hannah Wunsch '05. This fall Hannah will attend Gustavus Adolphus College in Saint Peter, Minnesota. Hannah's sister, Hallie Wunsch '02, won Student of the Year in 2002 and currently attends Gustavus Adolphus.

The winners of Teacher and Student of the Year are listed on recognition plaques located in Central's courtyard and in the Foundation office.



Student of the Year, Hannah Wunsch '05 (left) and Teacher of the Year, Scott Wilson (right), as announced at the Senior Recognition Event, which was held at Central on May 15, 2005.



Peggy Wheeler Scholarship

The Peggy Wheeler Scholarship, which honors the life of Peggy Aufencamp Wheeler '84, was awarded at the 2005 Senior Recognition event. Peggy's mother, Betty Aufencamp, is shown here with this year's award winners, Elisa Berzins '05 (left) and Kerry Storm '05 (right). In addition to being an alum, Peggy taught at Central from 1989 to 2002. The scholarship is awarded annually.

Recipient of First Student of the Year Award Pursues Doctoral Degree



David Rennard '99 pictured at the Foundation office in front of the plaque that bears his name.

David Rennard '99 received the first Student of the Year award given by the Foundation in 1999. "It felt great to be selected as Student of the Year," recalled David. "It was a real honor."

After graduating from Central, David earned degrees in chemistry and physics from Harvard University. "Central prepared me extremely well for Harvard," he said. "I was every bit as prepared as students coming from private East Coast schools."

Following his graduation from Harvard, David signed up for a ten-month stint teaching 10th and 11th grade algebra in Perth, Australia. He also established a calculus program at the school where he taught.

While in Perth, David learned of ENI, a college sponsored by the Italian Oil Corporation located in Milan, Italy. David graduated from ENI in 2005 with a master's degree in energy and the environment.

During his time in Italy, David decided to pursue an engineering degree when he returned to the United States. This fall, he will begin a doctorate program at the University of Minnesota in Minneapolis in chemical engineering and material science.

DONATIONS JULY 1, 2004 - JUNE 30, 2005

Our listing includes the names of people who gave to one or more of the following groups through the CHS Foundation: CHS Foundation, CHS Foundation Scholarship Endowment Fund, PEP Auction 2005, Alumni Association (including Alum. Assn. memberships), Athletic Booster Organization (including the Golf Outing 2005), V.O.I.C.E. donations and Band Parent donations. Both unrestricted and restricted gifts are included.

HONORARIUMS

A
In honor of Larry & Paula Albert's 50th wedding anniversary Murray '56 & Sharee '70 Newman

B
In honor of Tom Bernstein '54 James Shapiro '56
In honor of Julia Buresh Shella Fuhrman '66

C
In honor of Ken Carlson's (43) 80th birthday Robert & Mary Atherton '81
In honor of Stephanie Carlson '02 Paul & Norma DeGraff
In honor of Lorraine Clark '39 Linda Kistler '65
In honor of CHS Class of '48 Doris Hansen '48
In honor of CHS Class of '95 Bruce & Kimball Lauritzen
In honor of Jack & Marcia Cohen's wedding anniversary Lynne Bonham '80
In honor of Cheryl Milder Cooper '66 Jerome '35 & Frances '38 Milder
In honor of Dr. Rusty Crossman '66 Thomas & Terry Price

D
In honor of Nathan & Jared Dittman Marla Norton
In honor of Kate '01 & Alex '05 Drickey Pat & Karen Drickey

E
In honor of Katie Erikson '04 & Elizabeth Erikson '08 Don & Shelley Erikson

F
In honor of Anneliese '85, Peter '89 & Else '92 Festersen Sigrid Festersen
In honor of Bob & Robyn Freeman's 25th wedding anniversary Audrey Cohen '48

G
In honor of Peg Sheehan Gallagher '36 Virginia Lee Pratt '37
In honor of Jonathan Goldstein '46 Donald Stern '46

H
In honor of Betty Kraus Heyman '37 David Kraus '38
In honor of Jerry Hoberman '54 James Shapiro '56

K
In honor of Sheffel Katskee '29 Roy Katskee '60

M
In honor of H. T. Maples '93 Thomas & Terry Price
In honor of Howard Marcus '79 Joan Marcus '55
In honor of Donald "Pat" McWilliams John Maliszewski '70
In honor of Merrilee Moshier Miller '66 Thomas & Terry Price
In honor of Doc & Betty Moller Fritz & Chris Hammans Ron & Risa Hofmeister

O
In honor of Patrick & Sean Olson Margo Young

P
In honor of Ben Pierce '93 Phil & Edi Pierce
In honor of Tim Pierce '90 Phil & Edi Pierce
In honor of Virginia Lee Pratt '37 Elizabeth Anderson '37 Wayne Kallstrom '62 Earle Sherman '37
In honor of Sarah Price '98 Thomas & Terry Price
In honor of Terry Price Rusty Crossman '66

R
In honor of William Roark '56 & family Richard & Helen Kelley '56

S
In honor of Gayle Milder Spooner '69 Jerome '35 & Frances '38 Milder
In honor of the new multi purpose stadium Barbara Abernathy '38

T
In honor of Yale Trustin '42 Lisa Trustin

W
In honor of Sue '64 & Jerry Wacks' wedding anniversary Esther Stoler

Z
In honor of Jan Zlotowicz '64 Thomas & Jennifer '66 Seigner

MEMORIALS

A
In memory of Roger & Margaret Adrian William & Joyce '61 Perrin
In memory of Frank Anania '56 Jerry Brown '55
In memory of Martin Anderson '41 Josephine Anderson '42 R. Curtis Ralston '37
In memory of Scott Aschinger '67 Cindy Heck '66

B
In memory of Gloria McIlvanna Bartek '50 Barbara O'Farrell '50
In memory of Norman Batt & Lawrence Batt '64 Frances Batt '36
In memory of Diane Lynn Beal Richard Beal '64
In memory of Jeff Bonenberger '85 Anneliese Crawford '85
In memory of Brad Boyd '79 Robert & Mary Atherton 1981
In memory of Thomas L. Boyd Bruce Boyd '68
In memory of Bess Bozell Elisabeth O'Mara '37
In memory of Vernon Breakfield '61 Roy Katskee '60
In memory of Richard Brehm '53 Lawrence Brehm '50
In memory of Eugene C. Brown '46 Natalie Brown '85
In memory of Dr. Loy Brown '38 Betty Beard '39
In memory of Susan Thompson Buffett '50 Roz Friedman '43 Marvin '60 & Susan '68 Cohn Morley & Charlotte '46 Zipursky Tom '62 & Darlynn Fellman Howard '57 & Sharon '65 Kooper David & Shane Kotok MCI Frances Batt '36 Kenneth & Alison Cowan Sally Coyne '44 Olga de Goizueta Richard '53 & Beverly '59 Fellman John Filkins '38 David & Linda Gardels Marilyn Griffith '50 David '66 & Nancy Jacobson Lawrence & Jeannette '43 James Gabrielle James '51 Sue James '50 Kenneth & Sally '47 Kampfe James '38 & Shirley '44 Lipsey Hubert '44 & Jeanne Lipsey '45 Rosenblum Edward '40 & Sally '42 Malashock Alan '68 & Carol Parsow Virginia Lee Pratt '37 Harlan '69 & Jane Rips Cynthia Schneider '40 Security National Bank Robert & Celia Sullivan Carol Valdrighi Joy Wachal-Davis '50 Marilyn Weisberg '50

C
In memory of Doris Jean Cain-Frazier '51 Donald Cain '50
In memory of William Cambridge '49 Mike & Mary Buckley James Rowoldt '71
In memory of Jean Catherwood '32 Hugh Catherwood
In memory of Mollie Chertoff '05 John Wiesman '78
In memory of Craig Christianson '39 Marjorie Hickey '39
In memory of Ed Clark Shella Fuhrman '66
In memory of CHS Class of '54 deceased classmates Class of '54
In memory of Audrey Greenberg Cohen '48 Connie Osborne John & Kim Salistean
In memory of Ann Borg Condon '37 Christine Condon
In memory of Paul E. Crounse '39 James Crounse '71

D
In memory of James Davis '42 Barbara Davis '42
In memory of Rochelle Reis Drolson '60 Elaine Nacron '67
In memory of Janet McLain Dyer '55 Robert '54 & Dorothy '55 Rasgorshek

E
In memory of Nancy Norton Edell '60 Randi Levitz '66 Lisa Lewis '66 Jill Slosburg-Ackerman '66
In memory of Maurie Evans '39 Griffith Evans '71

F
In memory of Stephen A. Falk '66 Jeri Falk '69
In memory of Diane Ferguson '59 Paul Moessner 1958
In memory of Paul Festersen '57 Anneliese Crawford '85
In memory of Dean '49 & Barbara '51 Frankel Allan Nodde '58 Richard Rosenblatt '47

G
In memory of Ruth Emborg Gantz '15 Virginia Thompson '41

In memory of Jonathan A. Goldstein '46 James '46 & Joanne Scott-Miller

H
In memory of Norman L. Hahn '41 Judith Hahn '69
In memory of Louise Reynolds Haugh '36 Hird Stryker '36
In memory of Marlene Wolf Hechtman '49 Richard Rosenblatt '47
In memory of Bob Herbes '51 Marilyn Horner '52
In memory of William Hinchcliff '47 Carolyn Meissner '48
In memory of Louis B. Houser '19 Glenn Houser '49
In memory of Ford Hovey '51 David Allan '51

K
In memory of Mary Anne Kay '38 Michelle Schmoelzer '88
In memory of John Keenan Francie Hornstein '65 Therese Krolikowski '70
In memory of Reuben '24 & Kay Krogh Peter Krogh
In memory of Joel Kudym '96 Fred '67 & Judith '68 Kudym

L
In memory of Barbara Lane Lagerstron '55 Robert '54 & Dorothy '55 Rasgorshek
In memory of Marlene Friedman Landy '59 Thomas & Jennifer '66 Seigner
In memory of Marilyn Groff Larsen '48 Ronald & Cheryl '66 Cooper Rusty Crossman '66
In memory of Dorothy Larson '31 Anneliese Crawford '85
In memory of Ruth Lucke '28 Emil Lucke '28
In memory of Robert Lundgren '35 Cornelia Field '36
In memory of John E. Lydick '60 Dean Thomas '60

In memory of Ruth Pilling '26 (continued) Nancy Ponton '52 Henry Vierregger '53 Marvel Whelan '52
In memory of Charles Porter '45 Welling Porter '49

R
In memory of Ruth Romstedt Ramey '24 Jean Dutton '55
In memory of Erwin & Martha Rasp Pamela Rasp '68
In memory of Frank Rice Elaine Russell '51
In memory of Jayme Rose '99 Sharon Knobbe '60

S
In memory of Ora M. Saunders '05 Ruth McEnery '37
In memory of Richard Selby '38 Tracy Pavlick
In memory of Edward Sellz '41 Shirley Sigman '40
In memory of Shirlee Stecker-Carraher Sandra Byrd '77
In memory of Dr. Marjorie Stejskal Gregory Stejskal '67
In memory of William Stelzer '36 Dolores Owen '36 David & Shane Kotok
In memory of Bob Stryker '50 Jeff & Joy Davis Marilyn Griffith '50
In memory of Becca Sullivan '05 Richard & Maureen '72 Anderl
In memory of Violette Sundberg John Sundberg '27
In memory of Dorothy Larson '16 Thomas Backer '83 Fred & Marcia Backer James Backer '80 Annie Davids '80
In memory of Elsie Howe Swanson James Nemer '55 John Street '48

Michael & Susan Lebens '70 Lindsey Miller Lerman MCI Mutual of Omaha Pfizer Foundation Thomas & Terry Price Trent & Kendra Quinlan

R - Z
Joel '66 & Mary Rich Harley Schrage '65 Janet Strauss Hird Stryker '36 Mark Trustin Union Mortgage David & Carol Van Metre Gary & Erin Leary Wence

\$500 - \$999

A - G

Dennis & Terry Anderson Laura Bell Bob Broom & Mary Clarkson William Buffett '51 Fred Burbank '59 Carlson Wagonlit Travel Barbara Chappell '77 Kenneth & Alison Cowan James Crounse '71 Albert Crum '49 Henry Davis '69 Pat & Karen Drickey Don & Shelley Erikson Richard '53 & Beverly '59 Fellman First Data Western Union Foundation Nancy Friedland '57 Harry Friedman '64 Ike & Roz Friedman Foundation

H - Q

Christopher Harz '90 Indian Creek Nursery Adelaide Keller '41 Keith Kretschmer '52 Gregory & Jeanne Kulm '68 Jeremy Lerman '93 Jack Lewis '52 Steven '45 & Thelma '48 Lustgarten Gaylord (Doc) Moller Peg Nylon Nebraska Clothing Anita Nimitz '67 Eric Olson '83 Stanford Olson & Renee Young Jed Ortmeier '97 Daniel Pansing '89

R - Z

Merle Rambo '69 Michael Salerno '86 Security National Bank Arthur '51 & Judy '53 Seigfried Ed & Mary Taylor Dean Thomas '60 Time Warner Charles Vacanti '54 Brian Vickers '95 Henry Vierregger '53 Elizabeth Wickstrom '80 Donald Wrieth '66 Wyndle Young '89

\$100 - \$499

A

24 Hour Fitness Barbara Abernathy '38 Floyd '49 & Jane '51 Abramson Adam Whitney Gallery Payson Adams '57 Matthew Aden '74 Lawrence '51 & Paula '52 Albert Judith Albert '46 Robert Allen '44 Jeff & Jane Alseth Rohlin Anderson '55 Elizabeth Anderson '37 Joseph Armstrong '51 Charles Avery '64

B

Thomas Backer '83 William Baeder '61 Jonathan Bank '61 Patsy Barlow '56 Carlos Barrientos & Dolores Bangert Philip Barth '58 Peter Bartling '60 Frances Batt '36 Richard '51 & Ginny Bauer Baxter Chrysler Jeep, Jaguar, Landrover Richard Beal '64 Myron Bear '53 Deatrice Beck '71 Frederick Bekins '43 Dennis Belieu '80 Murray Belman '53 Loren Bender '67 Don Benning Michael Berg '66 Michael Berg Stephen Bergquist '59 James Bergquist '64 Joanne Berkshire '46 Robert Bernstein '69 Tom Bernstein '54 Jerry & Marlene Bernstein '50 Jerry Bexten Jack & Trish Billotte Susan Blackwood '66 Allison Blackhard '80 Dan & Kathy Blanke

GENERAL DONATIONS Listings are alphabetical and include honorarium/memorial donations.

\$80,000 +

Edwin Drdla '41 Edward Jepsen '61

\$2,500 - \$10,000

Richard & Maureen '72 Anderl Anonymous Band Patrons James Backer '80 Fred & Marcia Backer Susan Buffett '71 Class of '54 Rusty Crossman '66 First National Bank Matt & Donna Johnson Keith Wagner '72

\$1,000 - \$2,499

A - G

Robert Ahmanson '44 Ellie Clure '47 Joella Cohen '44 Olga de Goizueta John Filkins '38 Shella Fuhrman '66 Nelson & Linda Gordman '58 Mike Gorga & Pat Stelmachowicz

H - Q

Laurance Hoagland '54 I-Go Van & Storage Co. Eugene Jorgensen '39 John Kuhns '65

P
In memory of George V. Patton '44 Joanne Thomas '44
In memory of Robert Peterson '50 Sally Schaefer '50
In memory of Ruth Pilling '26 Annabelle Baley Thomas '37 & Evelyn Fike Donna Kibbey '48

DONATIONS: \$100 - \$499 (continued)

B (Continued)

George & Donna Blazek
Steven Blumkin '72
Frances Blumkin '44
Marjorie Bock '45
Doug & Erica '79 Bottger
Vicky Bowles-Cruz '86
Bruce Boyd '68
Dan & Becky Boylan
Jonathan Bradford '95
Kendall & Linda Brink '58
William Brinkman '64
Jerald Brodkey '51
Joe Brown '60
Sharon Brown '74
Jerry Brown '55
Natalie Brown '85
Bruegger's Bagel Bakery
Pamela Buffett '60
Donald Buresh '62
Ray Burkhalter '63
Bernard & Sally Burns '51
William Burri '68
Alvin Burstein '48
Harvey Burstein '40
Susan Butler '44
Eric & Cynthia Butler
Robert Byrne '39

C

Donald Cain '50
H. Marvin Camel '42
Marjorie Cantor '41
Donald Carlson '48
Hugh Catherwood
Robert & Marcia Chandler '65
Lawrence Chapman '52
Chicago Tribune Foundation
CHS Athletic Booster Club
Class of '94
Craig Clawson '69
Gene & Londa Claxton
Marshall Cochran '44
George Cockle '38
Richard Coder
Josephine Coffman '45
Douglas '56 & Maureen '58 Cohn
Sheila Coleman '81
Haunani Comenduley '84
William Condon '45
Edward & Winifred Connors '37
Thomas Cook '65
Steven Corrigan '67
Aurel Couch '47
Katherine Crossman
Gary Crouch '59
Lynn Curtis '54
Marcia Curtis '63

D

Robert Danenhauer
David Danford & Jean Thierfelder
Sharon Dardis '59
Eileen Darling '67
Annie Davids '80
Isabella Davis '30
Joy DeBacker '77
Paul & Norma DeGraff
Mike & Molly Delich
Deborah Denenberg '76
Steven Denenberg '73
Eunice Denenberg '46
R. Hugh Dickinson '36
Helen Douthy '35

E

Sandra Eichberg '65
Ronald Elliott '63
William Encell '58
Sandy Epstein '67
Harold & Etta Epstein '42
Mary Erixon '54
Michael Erman '56
Griffith Evans '71

F

Jeri Falk '69
William Farrell '91
Tom Fellman '62
Sigrid Festersen
Cornelia Field '36
Thomas '37 & Evelyn Fike
Jane Fischer
Jerry Fischer
Roger & Joyce Fitch
Robert Fonda '64
Bob & Robyn Freeman
Jeff French & Mary Lincoln
John Freymann '40
Sanford '64 & Amy Friedman
Scott '67 & Debbie Friedman

G

James '53 & Jean '57 Gabrielson
Ray Gaines '50
Thomas Galas '71
David & Linda Gardels
Kevin & Janette Garvin
Ronald & Patti Gatzke
Linda Gepford '64
James Gibilisco '64
John Gibson
Jerome Gillogly
Gary '56 & Cherna '59 Gitnick
Morton Glass '49
Bob & Janelle Goding
Louis Gogela '35
Turkiz Gokgol
Gary Goldstein '53
Donald & Ann Goldstein '64
Leonard Goldstein '38
Elliott Gosch '58
Leslie Gotch '64
J. Michael & Wanda Gottschalk
T. Allen Granfield '42
Patrick Gredys '73
Don '55 & Nancy '57 Greenberg
Allen & Mary Kay Greenberg
Dorothy Greiner '31
Marilyn Griffith '50
Beatrice Griffiths '42
Daniel Grossmen '70
Mary Gryva '69

Barbara Guss '70

H

David Haas '72
Christina Hagley '74
James Hall '59
Fritz & Chris Hammans
Terry & Judy Haney
Sandra Haney '57
Virginia Hanisch '44
Morgan Hankins
Jules Harding '91
Thomas Harkness '66
James Harris '44
Natasha Hartley '92
Teresa Hassler
James Haugh '38
Fred Hawkins '45
HDR Architecture, Inc.
Richard & Betty Heafey
Alan '53 & Ruth '54 Heeger
Alice Heffelfinger '44
Curt & Deb Hickman
Sharon Higgins '67
Wallye (Muzette) Hill '74
My Hiner
Charles Hinkle
Gerald '54 & Leslie '61 Hoberman
Paul & Barbara Hodgson
Marsha Holden '62
John Holland '38
Richard Holland '39
Morgan & Judith Holmes '54
Marilyn Horner '52
James & Kay Horwath '82
William Horwich '60
Don & Elizabeth '67 Hosford
Glenn Houser '49
Henry Houser '37
James Howard '58
Dave Hubbard
Robyn Hubbard
Brooks & Cindy Humphreys
Carol Hurlburt '57

J

Ira Jackson '37
Alan Jacobs '40
Jacobsen Kresse Knight Partnership
David '66 & Nancy Jacobson
Robert '43 & Bette '42 Jacobson
Charles James '44
Sue James '50
Jeff & Gloria Jensen
Susanne Jessen '45
Susan Jones '65
Richard Josephson '66

K

Barry Kaiman '68
Kenneth & Sally '47 Kampfe
Elizabeth Karpf '43
Howard Kaslow '57
Gordon Katz '69
Stephen Kelley '64
Richard & Helen Kelley '56
Max Kennedy '53
Gary & Karren Kerr
Donna Kerwin '89
Kiewit Construction
Kate Kilcoyne '77
Arnold Kimmel '64
Tony & Lauren Kincaid
Jack '49 & Geraldine '54 King
James Kirshenbaum '71
William Kizer '43
Hal Koch '79
Harry Koch '47
Paul & Janet Koenig
Joanne Kohn '51
Gerald Kohout '59
Howard '57 & Sharon '65 Kooper
Ken Korinek '53
Robert & Elaine Krasne '54
Robert Kretz '56
Myer Kripke
Kevin & Stacey Kroeger '79
Peter Krogh
Samuel '98 & Mary '97 Kruger
John Kruse '44
Frederick Kuethe '65
Howard Kutler '74
Steve & Carol Kuzelka

L

Anthony La Greca
Darrel Lahmann
Timothy Langan '95
John & Carole '64 Langan
E. John Larsen '43
Barbara Lashinsky '53
Clarkson Lauritzen '95
Bruce & Kimball Lauritzen
Michael '56 & Nancy '72 Lazer
John Lee '41
Beth Leeds '69
Lora Levin '56
T. Geoffrey '64 & Anne Lieben
David Lindberg '63
Harry Lipert '58
Martin Lipp '58
James '38 & Shirley '44 Lipsey
Douglas Little '53
Howard Loomis '45
Marjorie Loring '44
Louie M's Burger Lust
Henry Luce Foundation, Inc.
Louise Lyman '30
John & Jackie Lynch

M

Jeffrey Macdonald '82
Gail Machov '71
Jim & Lynda Madison
Edward '40 & Sally '42 Malashock
Veston Mallory '50
Patricia Mallory '50
Alan Marer '51
Milton Mares '55
Charles Marr '60
Thomas Marsicek
Ruth McEnery '37
Donald McIntyre '54

John McKean '66
Robert McManus '34
Elizabeth McNichols '77
John McPhail '63
Thomas Meehan '60
Theodore Menck '67
Bill Meyer '42
Mid American Energy Foundation
Jerome '35 & Frances '38 Milder
Ally Milder
Nora Millea
John & Merrilee '66 Miller
Mary Moberg '51
Paul Moessner '58
Bernard & Wendy Monbouquette
James '45 & Maria '44 Moore
Steve & Phyllis Moore
Robert Morgan '44
Paul & Karen Mullen
Joyce Muller '52
Mabel Musgrave '33
Bruce Muskin '69
Bob & Marty Myers

N

David & Sharon Napoliello '64
Barbara Naughtin '69
Ellsworth Nelsen '45
John & Judy Nelson
James Nemer '55
Steve & Elisabeth Newcomer '57
Dyke Newcomer '54
Bob Newman '46
Murray '56 & Sharee '70 Newman
Karl Niehaus '46
Nelly Nigro '43
Marty Nisi-McMahon '79
Allan Noddle '58
Harlan & Nancy Noddle '54
Brian Nolan '74
Marla Norton

O

Dan & Carie O'Banion
Paul '69 & Sue Ochsner
Barbara O'Farrell '50
Susan Ogborn '69
Robert Olander
Janice Oldfather '48
Albert (Biff) Olson '57
Orville Olson '38
Sue Olson Mandler
Omaha Community Playhouse
Carolyn Orr
Tami Osborne Pederson '77
Don & Rita Otis

P

Patty Packard
Parsow's Fine Clothing & Sportswear
Harlan Peckham '52
William & Joyce '61 Perrin
Ward Peters & Jean Ann Balingier
Robert (Pete) Peterson '58
Karen Phillips '56
Phil & Edi Pierce
Pitlor & Son, Inc.
Judy Poll '60
Henry Pollack '54
Nancy Ponton '52
Wendy Poston '68
Virginia Lee Pratt '37
Layne & Karin Prest
Thomas Price '57

R

Lonzale Ramsey '75
John Randall '30
William Reed
Steve Reida '69
James Reinhardt '60
Dick & Mary Lynn Reiser
Stephen & Barbara Rennard
Patrick Rhoads '80
Cory Richards '66
Ardeth Riedesel '48
Linda Riekes '64
Robert Rifkin '70
William Rifkin '72
Harlan '69 & Jane Rips
Lee Roberts '52
Charles Robinson '67
Larry Rock & Melissa Garner '90
Gary & Debbie '69 Rosenberg
Richard Rosenblatt '47
Hubert '44 & Jeanne Lipsey '45 Rosenblum
Louis Rotella '45
Dorothy Rothkop '43
Robert Rubio
Maurice Rule '52
Elaine Russell '51

S

Patrick '58 & Jeanne Salerno
Walter Samuelson '44
Ronald & Dorothy Santi '53
Lessa Scherrer '84
Don & Sue Schinzel
Dave Schinzel '82
Karen Schmidt '54
Cynthia Schneider '40
Phillip Schrager '55
David Schuur '58
John Scigliano '37
Louise Scolaro '52
James '46 & Joanne Scott-Miller
Gregory Searson & Margy Schneider '71
Susan Secrest '58
William Seidel '52
Jeff Seitzer '77
Anne Shackman '66
James Shapiro '56
Byers & Chris Shaw
Martha Shields
Jim & Sara Smith Shull
Edwin Sidman '60
Donald & Goldie Silverman '50
Bonnie Silverman '51
Denise Silverman '67
Frederick Simon '55
Suzanne Singer '54
Donald Sirles '52
John '86 & Joan '88 Skoog

Nancy Smith '89
Rodney Smith '51
Charles Smith '46
Elliott Spilker
Greta Stancik '52
Muriel Steinberg '36
Gregory Stejskal '67
Kenneth Stephan '64
Donald Stern '46
Patricia Stinger-Barnes '82
Bruce & Martha Stofko
Paul Strawhecker, Inc.
String of Purls
Robert & Celia Sullivan
John Sundberg '27
Robert Swanda '72
Benjamin Sylvester '42

T

Norman Thomas '44
James Thomas '57
Raymond & Laurie Thompson '57
Gary Thompson
Donald '59 & Gwendolyn '60 Townsend
John '71 & Kathy Treantos
John Tritten '65
Thomas '51 & Sally '52 Troyer
Gregory Tsuchis '78

U - V

William Urban 1964
Carol Valdrighi
James Van Metre 1981
Nancy Vaughan 1970
Norman '52 & Judith '57 Veitzer
Carl Vercio 1971
Maris Vinovskis 1961

W

Elene Wacks '64
Jeff & Ann Addison Wageman '85
Howard Wagner
Barb Wagner
Donna Walter '52
Brian Walter '95
John & Marjorie Waterman
Mary Webb '44
Harry '51 & Beth '52 Weigel
Judith Welk
Robert Wells '44
John & Tracy Wells
Michael West '84
West Center Psychiatric
Mary Ann Weston '58
Lawrence Wheeler '65
Leonard Wheeler '56
Marvel Whelan '52
Robert Whitehouse
John Wiesman '78
Jeff & Vicki Wiles
Gary & Cheryl Willis '70
Roberta Wilson '53
Joy Winkler
Thomas Wintle '66
Willard Wright '60
Paula Wright '50

Y - Z

Adam Yale '93
Margo Young
Richard '61 & Terryl '62 Zacharia
Edward Zelinsky '68
Charlotte Zipursky '46
Donna Zobell '75
John Zysman '64

Up To \$100

A

Catherine Ables '73
Marvin Abramson '56
Robert Abramson '54
Absolutely Fresh Seafood
Ada Ace '56
Dale Adams '50
Jennifer Adams '94
Ellen Adelman '61
Jeffery Aden '68
Lorraine Adlin '36
Deborah Ady '65
Richard Ahlstrand '59
Stephen Aken '69
Larkia Albright '56
David Allan '51
AMC Theatres
American Express Foundation
Thomas Ames '65
Park Ames '54
Dona Andersen '52
Peter Andersen '52
Dale Anderson '71
Michele Anderson '71
Douglas Anderson '60
Jean Anderson '89
Marilyn Anderson '44
Dorothy Anderson '33
Joseph Anderson '36
Dorothy Anderson '46
Josephine Anderson '42
Jim & Julie Anderson
Cynthia Anner '32
Anonymous
Mary Jane Anspach '33
Nora Anthony '54
Gary Antony '53
Harold Anway '43
Naomi Arnold '61
Maria Arredondo '04
Susan Aschinger '72
Judy Ashley '60
John Ashley '60
William Ashley '55
Robert & Mary Atherton '81

B

Judy Bachman '55
Nancy Backus '41
Betty Bailey '61
Jenny Bailey '94
Ardith Bailey '77
Debra Baird '68
Paula Baird-Kaminski '63

Kay Baker '52
Joe '39 & Emily '42 Baker
Lane Baker '51
Annabelle Baley
Jay Ball '80
Dolores Baltis '53
Arnold '58 & Rochelle '62 Ban
Ellen Bank '65
Nelson Barber '52
Robert Barber '43
Amy Barbic '93
Leslie Baright '41
Edmund Barker '37
Joan Barnett '48
Richard Barnhart '51
Susan Barrow '63
Joan Bartlett '45
John Barton '73
Steven Bartos '65
Paul Bashus '77
Janet Bass '64
Raymond Battreall '44
Heide Baumann '85
Mark & Jane Baumann
Margaret Baur '82
Anne Baxter '81
Brian Baxter '53
Vince & Louise Bazemore
Betty Beard '39
Kari Becker '85
Janet Beckmann '67
Linda Beebe '61
Robert Belknap '41
Edward '54 & Phyllis '55 Belzer
Jack Bena '57
Bernice Benak '42
John Beninato '71
Patricia Bennett '62
Tracy Benning '82
Bruce Benson '42
Lucy Beraldi '43
Jeff Berg 1993
Franklyn Berg '53 & Michelle Dloogoff '64
Barbara Berger '44
Vicki Bergman '38
William Berner '44
Shawn Berney '89
H. Bruce Bernstein '61
Bruce Bernstien '70
Mark Bernstien '67
Robert & Kathleen Best '42
Julie Bichelmeyer '93
Virginia Bigelow '52
Edward Binder '41
Neena Bixby '62
Philip Blanke '83
Elizabeth Blanke '81
Jack Blanke
Judith Blazek '58
Rosalie Blomquist '50
Diana Bloom '38
Brent Bloom '76
Blue Cross Blue Shield
Nadine Bollinger '47
Anna Bolmeier '03
Lynne Bonham '80
Harold Bordy '64
Rick Botos '74
Janet Bouma '43
Carolyn Braley '52
Alan Bramson '44
Thomas Branch '48
Parker Branch '47
Ruth Brand '40
Rusty & Becky Brauer
Lawrence Brehm '50
Roxanne Bridgewater '64
Margaret Briggs '45
Donald Brill '45
Jenny Brink '39
Clarke Brintnall '51
Sarah Broadhead '96
Annette Broderick '39
Ron Brodkey '54
Margie Brodsky '67
Frances Brookstein '60
Mary Brown '66
Beverly Brown '41
Dorothy Brown '38
James Brown '62
Ronald Brown '66
Robert Brown '31
John '46 & Janis '48 Browning
Barbara Bruce '40
Fern Bruhn '41
Mary Lou Brunson '44
Wallace Bryans '56
Gayle Brygger '76
John '45 & Kathryn '46 Buchanan
Buchanan's Amoco
Michael Buck
Nan Buckingham '59
Mike & Mary Buckley
Bruce Buckman '60
Terry Buell '65
Alice Bukacek '40
Gary Bunney '53
Rodlin '51 & Nancy '53 Bunney
Robert Burch '77
Dwayne Burhans '53
Sally Burke '53
Lyle Burklund '62
Karen Burmood '60
Lyle Burns '65
Robert Bush '46
Leonard Bush '48
Helen Bushman '34
Cheryl Butler '63
Vicki Buttery '73
Sandra Byrd '77
Carey Byrne '83

C

Joan Caliendo '46
Leo Callahan '41
Mary Calvert '66
Diane Calvert '58
Nancy Calvert '54
John Campbell '62
Mary Campbell '65
Judy Canaday '52
Judith Cannon '70
Karin Cappellano '99

C (Continued)

Helen Caraway '51
Wava Carl '39
Suzanne Carlson
Rodney Carlson '46
Ellie Carson '58
Molline Cassman '48
Jaymie Centamore '80
John Chamberlain '60
Glenn & Phyllis Chandler
Bill & Linda Chaney
Shelley Charles '94
Bruce Chatfield '75
Lynne Chesire '58
Dorris Chiarella '62
W. Scott Chiles '52
Wayne Christensen '56
Chester Christensen '49
Rose Chunka '69
James Cihlar '79
Marion Cimino '44
Donna Clark '62
Bonnie Clark '69
Classic Golf
Scott & Julie Cobb
Barbara Coffey '47
Jane Cogan '81
Jerome '46 & Barbara '52 Cohen
Audrey Cohen '48
Sylvia Cohn '43
Susan Cohn '68
Judy Cohn '54
Judy Collins '65
Marlene Colman '55
Martin Colton '47
Carol Combs '52
Barry Combs '50
Ralph Compton '45
Jo Ann Conboy '47
Christine Condon
Thomas Conrey '58
Grace Conway
Mark Conway '81
Beverly Cook '44
Marion Cooke '31
Cookie Artist
John Cooper '49
Alex Cooper '94
Joshua Cooper '92
Thomas Cooper '56
William Cooper '56
Ronald & Cheryl '66 Cooper
Harold Cooperman '33
William Cordes '66
Eleanor Cotton '37
Darrell Cox '51
Sally Coyne '44
Sol Crandell '43
Bernadine Crawford '61
Anneliese Crawford '85
Kenneth & Christine Crist
M. Kay Culton '56
William Curfman '79
Ulysses Curry '39
Julie Curtis '54
Janna Cutler
Jean Cutler '54

D

Donald Dandy '53
Eugene Dandy '60
Martha Daniels '48
Jeffrey Darst '94
Greg & Janine Daugherty
Sandra Davidson '80
Doris Davies '39
Nancy Davis '54
Jeff & Joy Davis
Augustina Davis '98
Jack Davis '46
Barbara Davis '42
Catherine Davis '74
Donald '60 & Kirsten '64 Davis
Patricia Davis
Diana Decatur '64
Mike & Pam Decker
Linda Dehart '61
Colette Del Rio '50
Peggy DeLand '48
Edward & Tamara DeLashmutt
Allan Demorest '49
Betty Denenberg Adler '59
Katy Dickerson '95
John '55 & Karen '56 Dillingham
John Dineen '86
James Dinsmore '47
Virginia Ditzler '58
Jody Dix '97
John Dixon '44
Peggy Doane '55
Richard Dobbs '64
David & Nancy Dobmeier
Gary Domet '66
Patricia Donat '62
Alicia Dorsey-Turner '82
Jean Doty '44
Daniel Douglas '88
Janet Douglas '58
George & Barbara Douglas '62
Ann Drebot
Debra Dresner '75
Howard Drew '34
Patricia Duda
Walter Duda '38
Jane Duff '51
James Duffy '39
Dundee Hardware Plus
Audrey Dunn '54
Eleanor Dunning '39
Durham Western Heritage Museum
Colleen Duryea '78
Richard Dustin '39
Keith Dutch '80
Jean Dutton '55
Carol Dworak '58
Joseph Dwoskin '53

E

Robert Eagleston '32
Greg & Michelle Eakins
Carol Easterling '42

Don Ecklund '60
Gary Ecklund '57
Nancy Edlund '52
V. Joanne Edwards '59
Jean Efferding
Darrell Efferding
Richard Einstein '56
Leo '35 & Aileen '41 Eisenstatt
Joan Eledge '76
Lawrence Elewitz '60
Marcie Ellis '89
Fredricka Ellis '94
Jeffrey Ellwanger '81
Susan Elsner '64
Jo Ann Elworth '80
Robert & Anne Embrey
Charles Endelman '65
Mary Ellen Engdahl '48
Richard Engel '62
Marion Engelhart '36
Iris Engelson '79
Joyce Enkema '37
Howard Epstein '69
Rosaline Epstein '38
Melvin & Lois Epstein '63
Arnold Epstein '53
Nils Erickson '70
Stephen Erickson '65
Barbara Erickson '42
L. Donald Erickson '52
Espresso Mary's
Larae Essman '51
Paul Essman '74
Esther's Designer Apparel
Micah Evans '90

F

Viola Fairchild 1966
Leonard Falk 1951
James Farber 1951
Judy Farber 1959
Sandra Fardon 1958
Hassan & Jody Farhat
Farmhouse Cafe
Burkett Farquhar 1940
William '57 & Kay Farrell
Shirley Farrington 1971
Samuel Farrington 1997
James Farris 1949
Fazoli's Restaurant
Bernard Feldman '55
Christine Felici '80
Edith Fellman '54
Robert Fellman '59
Rebecca Fendrick '76
Kathleen Ferry '79
Else Festersen '92
Peter Festersen '89
Joan Field '68
Goldie Fineman '33
David Finkle '73
Kenneth Fishbain '73
Barbara Fishkin '59
Bonnie Fisk-Hayden '61
Claire Flatowicz '65
Elaine Flaxbeard '76
Matthew Flick '87
Jennifer Flowers
Charlotte Floyd '37
Mary Focht '56
Molly Fogarty '91
Joan Folpe '51
Fontenelle Forest
M. Douglas Ford '60
Christopher Foster '80
Theodore Fotopoulos '82
George Fowler '48
Dava Fox '65
Donald Fox '47
Gordon Francis '48
Richard Frank '54
Maurice Frank '61
Barbara Frankel '57
Maury Franklin '52
William Franklin '49
Karen Frederick '92
David Freeberg '61
Marlyne Freedman '65
Elizabeth Freeland '58
Melvin '47 & Joanne '48 Freeman
Harry Freeman '49
Kay French '65
Kenneth Freshman '70
Janet Fretheim '68
Linda Frey '64
Lisa Frey '91
Jarvis Freymann '44
Arlene Fried '51
Sharon Friedlander '64
Gloria Friedman '40
Richard Friedman '61
Lloyd Friedman '33
Sidney Friedman '66
Jerry & Deb Friedrichsen
Debra Frye '86
Joan Fucinaro '57
Robert Fulton '56

G

Jeanne Gainer '69
Andrew Galenda '73
Brendan Gallagher '49
Jeanice Galloway '44
Edward Gansz '54
Elly Gardner '54
Lamar Garon '47
Louis Garrotto '47
Madeline Garver '30
Perry Garver '30
Robert Garvin '04
Robert Gass '99
Joan Gatz
Marlene Gatz
Calvin '77 & Mary Gauff
Robert Gaumer '57
Raye Gay '44
Harry & Judy Gaylor
Bo Gebbie '98
Gilbert Geihs '57
Joan Gentzler '56
Pegi Georgeson '61
William Gerelick '28
Laurie Gift '75

Donna Gilbert '61
Deborah Gilg '70
Elizabeth Gillaspay '57
Ronald Giller '69
Harriett Gilliland '46
Sarah Gilmore '84
Philip Gilmore '46
Richard Glasford '52
Barbara Glasgow '60
Robert & Carolyn Glenn '50
Janis Godfrey '43
Wade Goehring '83
Terry Goehring '89
James & Sheila Goeltz
Kurt Goeser '89
Shirley Wagner Goff '60
Shirley Pazlar Goff '54
Frank Goldberg '60
Stanley Goldenberg '49
Gwen Goldfarb '85
J. Leonard Goldner '36
John Goldner '56
Jerald Goldstrom '60
Steven Gomez '82
Larry & Linda '65 Gomez
Robert Goodbinder '70
Dolores Goodman '51
Gary Goranson '70
Philip Gorelick '59
Stephen Gould '61
Betty Graham '36
Jewell Grasmick '47
Paul Gredys '73
Iona Green '58
L. Boyd Green '52
Barton '42 & Caryl '46 Greenberg
Michael Greenberg '51
Sonia Greene '62
Martin Greene '57
Janet Greenfield '59
Angela Green-Garland '90
Rosalie Greenspan '47
Sharon Griffin '54
Teresa Griffith '62
George Grimes '41
Nancy Grissom '63
Rose Gross '43
Robert Gross '62
Kathleen Grover '70
Carl & Teri Gumbiner
Beverly Gundry '44
Norma Gunter '56
Fred Guss '66
Vic Gutman & Roberta Wilhelm

H

Glen Hadsell '60
Virgil Haggart '47
Diana Hahn '41
Judith Hahn '69
Phyllis Haley '56
Mark Haley '76
Robert Hall '56
Eugene & Jeanne Haman '54
Bette Hammond '62
Raymond Hampton '49
Shirley Hancock '44
Catherine Hanrahan
Lois Hansen '44
Grady Hansen '79
Doris Hansen '48
David '69 & Susan '70 Hanson
Midge Harbour '40
Linda Harder '66
Peggy Harriott
Chester Harris '52
Janice Harris '66
Virginia Harris '55
Vickie Harris '78
C. Lowell Harris '30
David Harrold '77
Jack Harrow '56
Richard Harrow '59
Jack Hart '34
Roberta Harvey '51
Mike & Peggy Haskins
John & Diedre Hausmann '66
Don Havlu '55
Connie Hawkins '61
Kelly Hawley '90
Elizabeth Heafey '76
Nicole Heafey '01
Donald Heck '88
Heidi Heck '90
Cindy Heck '66
Nancy Heil '61
Barbara Heineman '78
Sidney Heisler '64
Thomas Helligso '65
Rachel Helm '92
David & Paulette Hendee
Richard Hendrickson '51
Jeanne Herek '54
Holly Herman '78
Kent Herzog '95
Norman Herzog '59
Ian Herzog '60
Steve & Melinda Hess
Marjorie Hickey '39
Paul & Bettie Hickman '45
Jennie Hilburn Barker '68
Reginia Hill '73
Norma Hinchcliff '48
Carol Hipp
Miriam Hirsch '40
Barry Hoberman '76
Bruce & Holly Hoberman '65
Olga Hock '41
Clifton & Sandra '69 Hodges
Jacqueline Hofacre '51
Ron & Risa Hofmeister
Janelda Hogan '46
Dean Hokanson '64
James Hollenbeck '64
Rory Holmes '64
Alois Holts '44
LeRoy & Virginia Holtz '43
Dan Hooi '77
John Hopley '52
Russell Hopley '49
Claire Hoppe '35
Francie Hornstein '65
Kathy Horwitz '73

Richard Hosman '36
Carrie Howard '93
Hamilton Howard '50
Julie Howland '86
Debra Howland '86
Steve & Annette Huff
William Huffer '49
Earl Hunigan '47
Curtis Hunigan '49
Alexandra Hunt '50
Charles '54 & Janet '55 Hunter
Jennifer Hurley '90
Leonard Hurtz '34
Marilyn Hurwitz '55
Mary Sue Hutchins '51
Sonja Hyams '66
Daniel Hyslop '74

I

Roger Iliff '38
Susan Ingram '59
Dorothy Isard '31
Peter & Beverly Iwen

J

Elaine Jabenis '38
Mary Lee Jackson '46
William Jackson '43
Donna Jacob '50
Delbert Jacobsen '45
Elizabeth Jacobsen '46
Carrie Jacobson '94
Donald Jacobson '65
Mary Jaffe '60
Roger Jahnke '60
Vance James '36
Lawrence & Jeannette '43 James
Gabrielle James '51
Ernest Jaul '40
Thomas Jaus '48
Jeanne Marie for the Home
Regina Jenkins '42
Joan Jensen '54
Barbara Jess '65
Sylvia Jess '39
Sandra Jess '67
Arthur '39 & Virginia Jetter
Keith Jewell '40
Joyce Jobson '74
Barbara Johnson '43
Lori Johnson '76
Patricia Johnson '50
Georgiana Johnson '55
Steve & Nancy '72 Johnson
Darlene Johnson '51
Annette Johnson '52
Ann Johnson '48
Douglas '63 & Jeannette '64 Johnson
Karen Johnson '74
Tanya Johnson
Barbara Jones '53
Marian Jones '45
Jeffrey Jorgensen '67
Lawrence Josephson '70

K

Paul Kadavy '61
Roger Kadavy '65
Marcel Kahn '50
Gunter Kahn '51
Lawrence Kahn '57
Harold Kaiman '58
Franklin Kaiman '70
Nikitas & Lisa Kalantjakos
Raizell Kalishman '70
Wayne Kallstrom '62
Barbara Kamesar '47
Dorothy Kanger '61
Karen Kaplan '62
Michael Kaplan '67
Howard Kaplan & Julie Frank '71
Charlotte Karre '66
Ferne Katleman '50
Roy Katskee '60
Susan Katzman '64
Sharon Kaus '53
Lawrence Kavich '63
Aileen Kaye '65
Renee Kazor '61
Erin Keenan '82
Martha Keene '95
James & Jean Keeney
Ralph Keill '56
Jeanette Keim '51
Virginia Keith '54
James Keith '45
Dorothy Keller '46
Gilbert Kelly '57
Ray Kelly '54
Shari Kenealy '78
Howard Kennedy '58
Frances Kennedy '42
Judith Kennedy '66
Kentucky Fried Chicken
Rae Keogh '44
Aaron & Elizabeth Thonen Kerr '90
Lucille Kerr '42
Sean Kershaw '86
Karen Kersten '52
Clyde Ketelsen '39
Judy Keyser '64
Donna Kibbey '48
Stanley Kiepkke & Deonne Naticchioni
Madalene Kirby '50
Dionne Kirksey
Kevee Kirshenbaum '41
Linda Kistler '65
Joan Klanderud '63
Lawrence Klein '38
Julie Klingforth '69
Lois Kneeter '53
Jennifer Kniewel '98
Sharon Knoble '60
Joe Knowles '57
Michael Kobold '64
Jonathan Koderia '02
Thomas Koderia & Shirley Scritchfield
Richard Kohan '46
Marvin '48 & Sandra '53 Kohll
Jarold '55 & Gail '59 Kohll
Lorraine Kohrs '57
Karen Koiter '55
Joanne Kolenda

Dona Koll '50
James Koll '44
Tonja Koob '86
Sharon Kooper '65
Phyllis Koopman '41
William Koperski '77
Margaret Koser '65
David & Shane Kotok
Dave Koza '75
Donald Kraft '61
Julie Kraft '65
Helen Kranther '46
David Kraus '38
David Kreck '59
Janice Kreuzer '64
Barry Kricsfeld '63
Stacey Krieg '89
Clarence & June Kroeger '51
Burma Kroger '62
Jonathan Krogh '78
Andrew Krolikowski '78
Theresa Krolikowski '70
John Krolikowski '76
Jerry Krupinsky '51
Richard Kruse '41
Christopher Krush '61
Barbara Kudara '74
Robbi Kudym '78
Fred '67 & Judith '68 Kudym
Robert Kuhn '54
Richard '52 & Patricia '56 Kutilek
Stuart Kutler '58
Terri Kwiaterek '66

L

John Lacina '49
William Lacina '58
Susan LaCroix '74
Michael & Carol LaCroix
John Lacy '46
Carole LaFond '54
Cheryl Lambrecht '82
Jean Lamont '40
Renee Lampman '88
Dorothy Landstrom-Lund '39
R. Ann Langdon '55
F. Yvonne Langley '49
Peter Lankford '84
William Larsen '49
Robert & Joellisa Larsen '55
Ruth Lasser '42
Karen Lawson '59
Marilyn Layher '51
Kori Leavitt '96
Sonja Lee
Sandy Leedom
Lonny & Mary Legino
Ida Leistner
Colleen Lenners
Charles Leonard '74
Craig Lerner '83
Jim & Nancy Leslie '59
Marlene Levinson '56
Randi Levitz '66
Mitchell Lewis '86
Richard & Donnalee Lewis
Lisa Lewis '66
Randy & Dawna Lewis
Phillip Lewis '49
Jeff & Kim Lidgett
Eileen Lieben
Martha Liche '44
Rob Likes '91
Valaria Lincoln '50
Jean Lind '51
Lawrence Lindberg '64
Susan Lindsey '60
Linweld, Inc.
Harvey Lipsman '44
Maurice Lipton '51
Alys Lisle '62
Jodie Littlefield '63
Bonnie Litton '61
Karen Loch '73
Jane Loeck '77
Richard Lohse '34
John Lohse '39
Lynn Long '47
Richard Long '36
Jane Long '44
Marjorie Lord '40
Dan Loring '37
Laura Loughran
Edward Love '66
Jerrold Lucas '60
Emil Lucke '28
Edward & Phyllis Lueninghoener
Phyllis Lundgren '53
Katherine Lydiatt '04

M

Phyllis MacAdam '59
Anthony Macchietto '39
Joseph Macchietto '47
Charles Macchietto '43
Hugh Mactier '44
Stephanie Macy '87
James Madison
Dennis & Margie Magnuson
Harmon Maher
James Mahoney '71
Harriet Major '41
Trent Majors '79
John Maliszewski '70
Stanley Maliszewski
Douglas & Michel Mallenby
Mike & Sally Mann
Roxanne Manning '81
Justin Manvitz '45
Sebastian Manzitto '39
Steven Marantz '69
Erin Marasco '99
Joan Marcus '55
Jerry Margolin '54
Bernadine Markel '54
Silas '44 & Barbara '45 Markeson
Harriet Marko '50
Norton Marks '50
Charles '45 & Mary Jane '50 Marks
Laura Marling '50
Joyce Marshall '42
Lynette Martens '88
Julie Martens '67

DONATIONS: Up To \$100 (continued)

M (Continued)

Clara Martin '41
 Mary Martin '65
 Roger '63 & Jeannene '64 Mason
 Master Card International
 Barbara Maus '44
 Renee McArthur '87
 John '37 & Martha '36 McAvin
 Lyle McBride '47
 Jean McBride '41
 William McCague '42
 Robert McCardell '52
 Brian McCarthy '81
 Juanita McCartney '55
 Gayle McCaul '51
 Mike McLellan & Carol Kloss
 Marty McCombs '84
 Charles McConnell '60
 William McCoy '50
 Kristin McCoy '87
 Michelle McCune '92
 Bob & Sandy McCune
 Marian McGee '37
 Richard McGuire
 Dorothy McKeever '58
 Thomas McLaughlin '77
 Norma McLean '48
 Jacqueline McLellan '58
 Marilyn McMartin-Hamer '39
 Robert McMeen
 Larry McNichols '48
 Nancy McQueen '49
 Gay McTate
 Eileen McVeigh '56
 Stephen Mears '67
 Monica Meehan '81
 Bill & Teri Meier
 Sara Meirovitz '41
 Carolyn Meissner '48
 Howard Melcher '46
 Mellon Bank
 Joyce Mellor '42
 Orville Menard '51
 Eugene Merchant '41
 Annette Merlis '43
 James Merriam '53
 John Mertz
 Betty Meyer '37
 Elaine Meyer '44
 Karen Meyer '60
 Michael Meyer '56
 LeRoy & Kathryn Meyer
 Ardeen Meyerson '61
 Elizabeth Michnowski '79
 Catherine Miedl '89
 Kuniaki Mihara '58
 Kenneth Milder '75
 Alvin '50 & Sharon '55 Milder
 Adrienne Milder '50
 William Milek '37
 Jeanne Miller '77
 Karen Misaki-Fujii '63
 Helene Mittelman '65
 James & Mary Aull Moeller
 Patricia Mogil '54
 Michael '56 & Suzi '61 Mogil
 Shirley Mohr '44
 Mark Monge
 Marci Monaco '91
 Jacquie Montag '76
 Marjorie Montague '40
 Christina Moorcroft
 Barbara Moore '50
 Mary Moore
 Richard Moore '60
 Miles Moore '80
 P J Morgan Real Estate
 N. Leonard Morgenstern '39
 Laurie Moriarty '59
 Mary Morris '41
 Daniel & Nicole Morrison '93
 Willie Morrow
 Jack Moskovitz '53
 Betty Moucha '39
 Lynn Mousel '89
 Eleanor Mowery '31
 Harold Mozer '44
 Lorenz Muller '42
 Howard Munshaw '59
 Cheryl Murray '67
 Clifford Murray '59
 Norma Murray '50
 Charles Musselman '64
 Melinda Myers '05

N

Elaine Nacron '67
 Donald Nash '55
 Sufi & Margaret Nazem
 Omar Nazem '97
 Nebraska Wander Freunde
 Andrea Neill '92
 Marion Nelson '41
 Barbara Nelson '54
 Jon Nelson '58
 Conce Nelson '68
 Thomas & Maria Neumann
 Alvin Newberg '60
 Marvin Newberg '50
 Sandra Newby '58
 Scott Newquist '72
 Jack & Ann Newton
 Janet Nickman '59
 Susan Nielson
 Ted Niess '44
 John Nixon '68
 Nobbies
 John Noble '55
 Betty Noble '40
 Alan Nogg '52
 Richard Nordstrom '42
 Margaret Norton '56
 Kathryn Novak '94
 Wendy Novicoff '86

O

John Obal '70
 Robert Oberman '57
 Harold Oberman '49
 Ann O'Brien '84
 Dennis O'Brien '54
 Andrew Ochsner '97
 Nancy O'Denius '65

Susan O'Donnell '60
 Robert Offerjost '49
 Ruth Oja '46
 Luna Okada '77
 Darlene Oliver '52
 James Olsen '51
 Laura Olsen '77
 Terrence Olsen '58
 Jeffrey Olson '79
 Julie Olson '77
 Roger Olson '81
 Brian Olson '83
 George Oltman '54
 Bernard Oltman '51
 Michael O'Malley
 Elisabeth O'Mara '37
 Debra Ortmann '75
 Damon Osborne '83
 Connie Osborne
 Kathleen Osick '49
 Nancy Ostermann '52
 Donald Ostrand '41
 Ruth Ostronic '49
 Thomas Ostronic '63
 Rol Otis '43
 Jean Ours '35
 Dolores Owen '36

P

Paul Padmos '00
 Michael Page '87
 Richard Pallat '90
 Linda Pantier '65
 Emmanuel Papadakis '52
 Charles Parks '62
 Alan '68 & Carol Parsow
 Robert '61 & Janet Partridge
 James Passolt '62
 Helen Patane '47
 Jessica Patton '57
 Tracy Pavlick
 Anthony Payne '60
 George Payne '34
 Barbara Pearce '69
 Shirley Pearson '48
 Carrie Peasinger '99
 MaryAnn Pederson '63
 Bess Perlmeter '39
 Allen Perryman '85
 Janet Perryman-Butler '79
 Timothy Peters '79
 Jane Peters '47
 Donna Petersen '64
 Ronald Peterson '51
 Glenn Peterson '47
 Marlyss Peterson '61
 Robin Petrowski '79
 Richard Pfaff '53
 Kathryn Pickrell '56
 Timothy Pierce '90
 John Pilling '64
 Elizabeth Pim '87
 Arthur Pinkerton '29
 Marilyn Pirtle '41
 John Plantikow '41
 William Plotkin '44
 William Podrouzek '39
 George Polley '34
 Maxine Polsky '49
 David Polson '70
 Mary Polson '67
 Raymond Poore '41
 Ann Poppingo '51
 Mary Poretti '41
 Welling Porter '49
 Helen Porter '48
 Bette Ann Poska '51
 Lester Pospichal '45
 Merle '49 & Ruth '53 Potash
 Myrlee Potosnak '43
 Margaret Poupard '57
 William Praetorius '47
 Jerry & Susan Prazan
 Joyce Prchal '57
 Bernice Premack '51
 Linda Presern '64
 Glenn Prettyman '76
 Peggy Price '57
 Marjorie Price '51
 Celeste Price-Polson '97
 Lauren Price-Polson '97
 Jane Prohaska '68
 Lisa Prosterman '97
 James Protzman '44
 Sandy Puckert '84

Q - R

Eleanor Quelvog '32
 Raul Quimby '45
 Deanne Raffel '55
 R. Curtis Ralston '37
 Richard Ramm '67
 Henry Ramsey '42
 Julie Ramsey '69
 Joseph Randazzo '70
 Georgiann Rapp '54
 Robert '54 & Dorothy '55 Rasgorshchik
 Candace Rasmussen '65
 Pamela Rasp '68
 Dave & Julie Rathman
 Paul Rathouz '82
 Gail Raznick '66
 Aaron Raznick '44
 Elizabeth Rea
 Jim '71 & Leslie '72 Redelfs
 Randy & Rita Reeves
 Todd Reiser '93
 Heather Reisinger '92
 Bob Reisser '40
 Lois Rempel '43
 Carl Rennerfeldt '65
 James Ressegieu '61
 Mary Rhodes
 Charles Rice '50
 Donald Rice '45
 Barbara Richardson '78
 Martin Ricks '61
 Anita Riedinger '51
 Dorothy Riekes '38
 Lynn Riley '95
 Benjamin Rinaker '99
 Linda Rindler '57
 Arnold '43 & Joan '46 Ring

Joan Rips '46
 Esther Rishel '40
 Carol Robb '50
 Dorothy Roberson '34
 Anne Roberts '79
 Bill & Kim Roberts
 Carolee Roberts '52
 Betty Robertson '34
 Delores Robinson '41
 Nancy Robinson '54
 Charlene Robinson '49
 Lewis Roccaforte '48
 Robert Roche '64
 Cheryl Roche '41
 Stuart Rochman '50
 Barton Rochman '50
 Daniel Rock '86
 George Rogers '70
 Joel Rogers '75
 Katina Rogers '77
 Sylvia Rortvedt '66
 Ethelyn Roseman '43
 Jerome Rosen '57
 Steven Rosen '73
 William & Margo Rosen '67
 Alan Rosen '54
 Michael Rosenbaum '71
 John Rosenberg '71
 Bette Rosse '60
 Corinne Rotella '52
 Michele Roth '71
 Elise Rothbard '65
 Barbara Rothenberg '73
 Marie Rountree '47
 James Rowoldt '71
 Ben Rubin '54
 Sarah Rubinstein '60
 Myron Rubnitz '41
 Walter Ruge '65
 Mildred Rusek '42
 Mark Ryan '84
 Patricia Ryan '42

S

Gina Saitta '77
 John & Kim Salistean
 Paul Saltzman '48
 Fred & Lynn Salzinger
 Myrna Sandall '55
 Marita Sanderson '61
 Nancy Sandstedt '69
 Betty Sanford '42
 Theodore Sanford '64
 Colleen Sariscsany '67
 Joseph Sarlo '65
 Carol Sass '52
 Paula Saunders '73
 Terrie Saunders
 Jessica Savine '92
 Helen Sawtell '48
 David Saxe '32
 Milton Saylan '36
 Larry Scalise '82
 Janet Scarpello '62
 Michael '91 & Michelle '87 Scasny
 Sally Schaefer '50
 Marilyn Scheffler '57
 David '60 & Jennifer '62 Schenck
 Robert Schiffbauer '82
 Marlene Schilling '51
 Mark Schimmel '57
 Jessie Schirding '37
 Michael Schlatter '64
 Richard Schlievert '64
 Joan Schlosser
 Harold Schmitz '52
 Michelle Schmoelzer '88
 Edward Schneider '58
 Eric & Jackie Scholar
 Robert Schoultz '42
 John Schrag '55
 Louann Schropp '51
 Ruth Schrott '58
 Louise Schulz '62
 Benjamin Schwartz '43
 Jerry Schwartz '59
 Phyllis Schwartz '50
 Arthur Schwartz '54
 Debra Scott '79
 Karen Scott
 Ronald Sears '64
 Rosalyn Sedlak '66
 Lee '38 & Willa '43 Seemann
 Richard Segal '49
 Betty Segell '50
 Steven & Barbara Seglin '59
 Brenda Seher
 Rick & Colleen Seidl '75
 Thomas & Jennifer '66 Seigner
 Paul & Jean Semrad
 Cynthia Serfass '78
 Barbara Sessions '45
 Marie Shafer '44
 Morris Shapiro '38
 Gail Shaw '66
 Bob & Cindy Sheffield
 Earle Sherman '37
 Clifford Shewan '39
 Patricia Shouse '56
 Lynn Showalter '73
 Sharoll Shroyer '56
 Martin '67 & Aveva '68 Shukert
 David & Regina Shumaker
 Bob & Becky Shuster
 Everts Sibbernsen '46
 Eileen Sides '43
 Sylvan Siegler '43
 Shirley Sigman '40
 Soralee Sigoloff '46
 Robert Silhasek '53
 Harry Silver '66
 Joan Silver '52
 Steven Silver '57
 Portia Simms '41
 Lee Simon '56
 Miriam Simon '38
 Lynne Simpson '79
 Edele Singer '59
 Mark & Chris Sjogren
 Dorothy Skardal '40
 Prudence Skinner '55
 Betty Skovgaard '37
 Camille Slights '54

Lee Sloan '69
 Shirlee Smeerin '41
 Marjorie Smisek '45
 Joyce Smith '45
 Vernon Smith '44
 Carolyn Smith '59
 Clifford Smith '54
 Eugene Smith '63
 Roger Smith '60
 Timothy Smith '82
 William & Mary Smith
 Beth Smith '39
 Beverly Smith '45
 Dennis & Sharon Smith
 Beretta Smith-Shomade '84
 Grace Snavely '31
 June Soderlund '39
 Ray Somberg '54
 Anna Sorensen '48
 Debra Sorensen '65
 Shirley Sorkin '45
 Kelly Souder '75
 Sue Sova
 Angier & Sondra Spaulding
 Gayle Spencer '78
 Elaine Spire
 Spirit World
 John Spitzer '63
 Mary Spurlock '67
 State of NE - Dept of Revenue Employees
 Arthur Stearns '53
 Clyde & Margaret Stearns '73
 Christine Steffen '86
 Marilyn Stein '40
 Marvin Stein '44
 James Steinberg '72
 Gwen Stevens '55
 Richard Stewart '46
 Harry Stickler '34
 Alex Stolarskyj '59
 Esther Stoler
 Doris Stoltenberg '61
 Gloria Storch '52
 Doris Storey '42
 John Street '48
 David Strunc '75
 Robert Stryker '50
 Marni Stusse '92
 Elizabeth Sullivan '43
 Minnie Sullivan '51
 Roberta Sullivan '53
 Timothy Sumnick '70
 Barbara Super-Goldstein '63
 Gary Swain '69
 Eva Swanson '44
 Kristine Swanson '86
 Terence Swanson '54
 Stevenson Swanson '76
 Joseph Sweeney '59
 Edward Swenson '44
 John & Jacqueline '78 Swirzinski

T

John Taff '58
 Target
 Jane Taureti
 Betty Taylor '39
 R. Darrell Taylor '69
 Walter Taylor '65
 Malva Taylor '54
 Orene & Thyris Taylor
 Thomas Teal '55
 Robert Teply '95
 Robyn Terry '85
 Art Tesar '52
 Pat Tetrick '54
 Jane Tholt '74
 Joanne Thomas '44
 Marilyn Thomas '41
 Patrick & Margaret Thomas '46
 Amy Thomas '84
 John & Susan Mayberger Thomas
 Shirley Thompson '60
 Virginia Thompson '41
 Thomas Thompson '47
 Carol Thompson
 Shirley Thornby '51
 Marilyn Tipp '68
 May Todd '47
 Thomas Toft '54
 Tom Tompkins '60
 Gifford Tompkins '55
 Raimond & Sheila '62 Tomps
 Larry & Terri Torpy
 Andrew Towl '28
 Anastasia Treantos '00
 Carol Trevino '94
 Keith & Betty Jean Trimble '70
 Rose Troncale '41
 Katherine Troutman '72
 William True '41
 James Truell '65
 Yale Trustin '42
 Connie Tschetter '76
 Stewart '49 & Judith '52 Tully
 Estelle Turkel '40
 Norman Turkel '41
 Howard Turner '38
 Beth Tygart '82

U - V

Marilyn Ulman '46
 Richard Undeland '48
 Wanda Utech
 Joseph Vaccaro '54
 Josephine Valasek
 Judy Vann '52
 Judy VanZant '64
 Debra Vargas '71
 Theodore Vatnsdal '88
 Leonard Veitzer '47
 Irving Veitzer '46
 Tina Ventry '86
 Julie Videon '55
 Robert Vieregger '48
 Thanh Ha Vo
 Vera Volk '79
 Ann Volz '53
 John Voris '74

W

Joy Wachal-Davis '50
 Courtney Wachs '34

Robert Wachter '77
 Diana Wadsworth '58
 Darryl Wagner '81
 Beth Wagner '95
 Timothy & Mary '67 Wahl
 Mary Wall '34
 Linda Wallraff '68
 Margo Ward '76
 Douglas Warden '88
 Nicholas Wardle '67
 Robert '47 & Evelyn '50 Warner
 Juanita Waszak
 Steve & Marcia Waszak
 Lynda Watson '59
 Hene Watts '48
 Kay Wayland '50
 Kimellon Wear '75
 Linda Weaver
 Geraldine Webb '67
 Janis Weidenhammer '66
 Peter Weil '51
 Howard Weinberg '58
 Phyllis Weinberg Carson '54
 Ina Weiner '57
 Sam Weinstein '34
 James Weinstein '71
 Marilyn Weisberg '50
 Windec Weiss '92
 Kelly Welbourn '99
 Jean Welch '54
 Betty Wellington '43
 Flora Wells '40
 Hugh Wells '47
 Mark Wells '72
 Stuart & Ann Wells '49
 Ann Welton
 Mitzi Wesely '50
 Jerilyn Westerhoff '50
 Barbara Wheeler '66
 Connie White
 William (Mort) Whited '46
 Henry Whitney '44
 Ralph & Jean Whitten
 Marlin & Kathy Widdershoven
 Gustav & Joanne Wielandt
 Jane Wierman '62
 Thomas Wiese '56
 James Wigton '66
 Charles Wilber '65
 G. Wilcox '45
 Carolyn Wilcox '43
 Virginia Wild '48
 Patricia Wilkie '53
 David Willard '80
 Maxine Willcox '37
 Annis Williams '44
 Georgia Williams '53
 Norman Williams '44
 David Williams '77
 Barbara Williams
 Karen Williams-Bell '56
 Alice Williamson '46
 Margie Williamson '54
 James Wilmot '59
 Carol Wilson '57
 John Wilson '59
 Louise Wilson '47
 Warren & Linda Wilson
 Carlyle Wilson '38
 Karen Wilson '77
 Karen Wilson '76
 Mark Wilson '67
 Sharon Wilson '57
 Shirley Wilson '41
 Sam Wilson '53
 Nancy Winans '74
 Ernest Wintroub '35
 Ryan Wise
 Selma Wittenhagen '48
 Cecil Wittson '56
 Virginia Wojtkiewicz '71
 Nancy Wolfe '48
 Justin Wolfson '39
 Joan Wonn '43
 C. Yvette Woods '70
 Carole Woodworth '61
 Joan Worrall '48
 Alan & Jenna Woster
 Thomas Wright '48
 Corey Wright '46

Y

Judy Yacio
 Matlee Yadin '55
 Irvin Yaffe '36
 Shirley Yarosh '52
 Celinda Yates '84
 Milton & Norma Yin
 Meehwa Yoe
 Malcolm Young '61
 Margaret Young '60
 Conrad '39 & Muriel '41 Young '39
 Betty Youngman '51

Z

Vonnetta Zacccone-Byington
 Kylie Zacharia '04
 Abraham '71 & Hollie '72 Zeiderman
 Wanda Zerzan '44
 Jeffrey Zimmerman '69
 Jackie Zinnel '74
 Kevin & Helen '77 Zuegner



**Thank You
 For Your Support!**



Central High Alumni Association

Alumni Register

Central High School, Omaha, NE

Volume 7, Number 2

Fall 2005

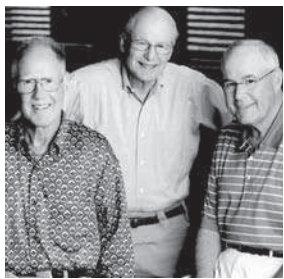
Mark Your Calendars: 2005 Hall of Fame is October 6

The lives of 13 individuals whose paths from the halls of Central High School led them to the highest levels of achievement in business and community service will be celebrated in an awards ceremony slated for October 6, 2005. The 7th annual Hall of Fame dinner begins at 6 p.m. in the Central High School courtyard. The induction ceremony, which is free and open to the public, begins at 7:30 p.m. in the school auditorium. Photos and brief biographies of those honored this year are featured below and a reservation form for the 6 p.m. dinner, is available on page 11.

Omaha Steaks was founded in 1917 as Table Supply Meats by J.J. Simon and his son, B.A. Simon. Since then, the company has been a major cultural and economic force in Omaha with its 1,800 worker employment base and another temporary work force of 1,900 during the holiday season. The company also makes its telemarketing facility available to Central High groups such as the Alumni and PEP groups for their annual fundraising campaigns. They also support numerous arts, health, and civic organizations, including Opera Omaha, Joslyn Art Museum, Omaha Symphony, and Bemis Center for Contemporary Arts.



Lester Simon, Class of 1924, B.A. Simon's son, joined the company in 1929, becoming president in 1946. He started the company's first mail-order venture in 1952, changed its name to Omaha Steaks, and moved the company to a new plant on South 96 Street in 1966.



Top Photo: Lester Simon
Bottom Photo (listed left to right):
Fred, Alan and Steve Simon

Alan Simon, Class of 1952, a graduate of the Wharton School of Finance, is the chairman of Omaha Steaks International. He has most recently received the Volunteer of the Year Award from President Bush.

Frederick J. Simon, Class of 1955, a graduate of the University of Pennsylvania, serves on the boards of Joslyn Art Museum, Opera Omaha Foundation, Santa Fe Opera and Chamber Music Festival, and many other civic organizations.

Stephen H. Simon, Class of 1957, a graduate of the University of Indiana, is Vice President and General Manager of Omaha Steaks International, the Food Service division. His service includes being a board member of the Jewish Press, the Arizona Symphony, and the Arizona Center for Performing Arts.



Harold Cooperman, Class of 1933
Harold Cooperman came to Omaha from Poland at the age of five. After graduation from Central at age fifteen, he worked for his uncle, Al Wohlner, before opening the first Harold's Market in 1938. During World War II, Mr. Cooperman served in the U.S. Navy, managing the meat department of the base kitchen on Guam. Mr. Cooperman returned to the grocery business after the war with his highly successful Locust Street establishment in Carter Lake, IA. In 1980, he revolutionized the local grocery store scene with a warehouse store called "No Frills." His

innovative TV commercials, with his own costumed appearances as various historical and popular figures, have typified his hands-on approach to large business. The "No Frills" chain has recently expanded from ten stores to fourteen by taking over former Baker's and Albertson's sites. Mr. Cooperman's eleven-hour working days have characterized his work ethic, and his contributions to civic causes have demonstrated his devotion to the community.



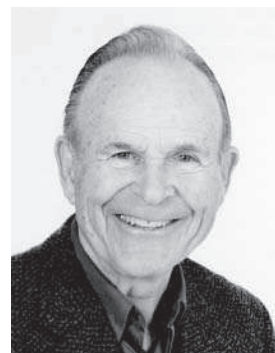
Lee D. Seemann, Class of 1938
An outstanding athlete and member of the Crack Squad, Central's prestigious military drill team, Lee Seemann enrolled in Santa Clara University after high school. While in college, Mr. Seemann was elected President of his senior class, played football and participated in ROTC. After his 1942 college graduation, Mr. Seemann went directly into the U.S. Air Force, where he became a B-17 pilot during WWII. Captain Seemann and his crew flew 33 combat missions over Europe. Capt. Seemann was awarded the Silver Star, two Distinguished Flying Crosses, five Air Medals, the

Purple Heart, the 96th Bomb Group Citation Medal and the Russian Citation Medal. After the war, he returned home to Omaha and remained in the Air Force, attending the Army's prestigious Command and General Staff School. In 1947, he married Willa Davis (CHS Class of 1943). He began his career with the International Harvester Company and eventually began his own trucking business. Lee and Willa Seemann have supported many charities over the years, including a significant contribution to support Central's new stadium which bears their name.



Alfred P. Pattavina, Class of 1942

A varsity wrestler at Central, Alfred "Al" Pattavina enlisted in the United States Army after graduation and served in the Pacific Theater during WWII until 1946. Active in the Army Reserves, Al was recalled to military duty during the Korean War. He left the service in 1952 with the rank of Lieutenant Colonel. Mr. Pattavina received a degree in criminal justice from the University of Nebraska-Omaha and began a career noted for its public service. Mr. Pattavina joined the Omaha Police Department in 1947 and stayed for 34 years, moving from patrolman to Deputy Chief and then to Acting Chief. Mayor Gene Leahy named Mr. Pattavina the City of Omaha Director of Public Safety, and he retained that position, as well as the serving as Police Community Relations Coordinator, throughout the terms of the next three mayors. Mr. Pattavina was a charter member of the VFW and the Omaha Police and Fire Post #9551, and also helped to establish the ROTC program at Boys Town. After his retirement, Mr. Pattavina became the Chief of Security for Bluffs Run and later for Big Red Keno. Throughout his life, Mr. Pattavina enjoyed participating in youth sports, serving as a baseball umpire, volunteer high school wrestling coach and college wrestling official, receiving numerous awards and recognitions for his volunteerism. Married for more than 34 years to Arletta, Mr. Pattavina died on October 15, 2004, in Waterloo, NE.



William M. Kizer, Class of 1943

After his 1943 graduation from Central, William Kizer attended Iowa State University and Creighton University, and went on to serve in the Naval Air Corps during WWII. In 1977, Mr. Kizer established Central States Indemnity Company of Omaha and is now its chairman. In 1982, he established the Wellness Council of the Midlands (WELCOM), an organization that encourages businesses to support healthy workplace programs and practices for their employees. In 1986, Mr. Kizer established Wellness Councils of America (WELCOA), an Omaha-based organization that has fostered healthy workplace initiatives for businesses nationwide. His book, "The Healthy Workplace: A Blueprint for Corporate Action", explores the need for and benefits of employee wellness programs in corporations large and small. In recognition of his efforts, Mr. Kizer was recognized by the U.S. Department of Health and Human Services, and in 1985 he was named Omaha Health Citizen of the Year. In 2001, Mr. Kizer received both the Omaha Medical Society's Community Service Award and the Nebraska Medical Association's Friend of Medicine Award. Creighton University and the University of Nebraska-Lincoln have conferred honorary Doctor of Humanities degrees on Mr. Kizer.



Albert B. Crum, Class of 1949

After graduating from Central, Albert B. Crum went on to become one of the nation's leaders in the study of mental health, stress, and substance abuse. With an undergraduate degree from Redlands University, Dr. Crum went on to receive his M.D. from Harvard Medical School in 1957, followed by a Psychiatric Residency with Columbia University in 1963. He later also received an M.S. in Neuroanatomy/Neurosciences from NYU in 1987. He is a member of Phi Beta Kappa, Sigma Xi, and Mensa. A Clinical Professor of Behavioral Sciences at NYU, Dr. Crum is a fellow of the Royal College of Physicians and Surgeons. The Founder/President of Stress Watchers, Inc., a franchise company focusing on stress management, Dr. Crum has developed and patented products to help combat the impact of stress on the body's immune system. He created "The Percept Method for Stress Relief" and he is President/Founder of The ProImmune Company which has plans to market immune-enhanced dietary supplements. As a physician, scholar, psychiatrist and forensic expert, Dr. Crum also provides assessments for traumatic stress, court testimony, psychiatric consulting and medical/forensic evaluations. In addition to a lengthy list of community service accolades and awards, Dr. Crum has published books and numerous articles and has been a speaker at many academic meetings and seminars. Dr. Crum has also served as a Captain in the United States Air Force and Chief, Neuropsychiatric Service at Continental Air Command HQ.

Central High School Hall of Fame 2005 (Continued)



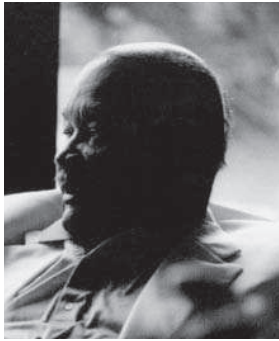
David P. Young, Class of 1954

David P. Young's Central High experience included Concert Band, Debate, Road Show, Central High Players, Hi-Y, Latin Club and Journalism. After graduating from CHS, Mr. Young went on to Carlton College, graduating with honors in English in 1958. He earned his M.A. and Ph.D. at Yale University in 1959 and 1965. During his nearly half-century career, Mr. Young's published works have included ten volumes of poetry as well as eleven volumes of verse translated from Chinese, German, Spanish and Czech. Mr. Young's other works include creative nonfiction and critical studies of Shakespeare and Yeats. He has edited six anthologies and received fourteen major awards and fellowships, including a Guggenheim Fellowship in 1979 and the Pushcart Prize in 2002. Mr. Young has taught at Oberlin College since 1961, including visiting professorships at Harvard, Bread Loaf School of English, Yeats International Summer School and University of California/Irvine.



Howard Rosenberg, Class of 1969

Howard Rosenberg is currently a Washington, D.C.-based producer for ABC's "Prime Time Live." While a student at Central, Mr. Rosenberg served as a photographer for the Register and OBook, and went on to graduate with honors from George Washington University and to serve in the U.S. Navy. His Atomic Soldiers (Beacom, 1980) documented abuses in the nuclear testing program of the 1950s and established his credentials nationally, especially when his book served as a basis for the 1989 TNT show "Nightbreaker" starring Martin Sheen and Emilio Estevez and then went on to win the Writer's Guild Award for Best Teleplay. An award winning investigative reporter, Mr. Rosenberg worked for "The CBS Evening News with Dan Rather" from 1984 to 1990 before becoming a producer for "60 Minutes" from 1991 to 1997. Recent television credits include "Rumsfeld's Rules of War" and "9/11: Moment of Crisis." A prolific writer, his articles have been featured in dozens national publications.



Nathaniel R. Goldston III, Class of 1956

Nathaniel R. Goldston founded Gourmet Services, Inc., the largest wholly black-owned food services management company. His 2,500 employees provide meals to 40,000 students attending universities and 360,000 students attending three urban school districts. Mr. Goldston was an active student at CHS, participating in Student Council, ROTC, football and golf. After getting a start in the food service industry at Omaha's Blackstone Hotel, Mr. Goldston earned a business degree with specialization in hotel and restaurant management. He went on to work in the catering industry and advanced rapidly to senior vice president. Mr. Goldston has received numerous awards, including the "Catalyst Award," which recognizes Atlanta's most promising businesses, and Turner Broadcasting's "Trumpet Award." Mr. Goldston founded the 100 Black Men of Atlanta and went on to become one of five founders of the 100 Black Men of America. He also serves on several national boards including the Board of Trustees of his alma mater, the University of Denver.



Rudolph Smith, Sr., Class of 1963

When photojournalist Rudolph "Rudy" Smith joined the staff of the *Omaha World-Herald* in 1964, he became the first African American to work in the News Department. Since then, his photographs have reached national and international audiences through the pages of *Newsweek*, *Sports Illustrated*, *Newsday*, *Life*, *Time*, *Ebony*, among others. The winner of more than 50 awards for excellence in photography, Mr. Smith is widely known as a "community catalyst" for his efforts on behalf of North Omaha and the metropolitan Omaha community. As a student leader at the University of Nebraska-Omaha, Mr. Smith helped establish UNO's Department of Black Studies and introduced legislation to remove discriminatory housing practices near campus. He later became the first African American faculty member in the UNO Department of Communications and served as an instructor there for many years. Mr. Smith helped develop scholarship programs for minority students as well as a training program to improve business opportunities for women and minorities across Nebraska. Mr. Smith served as chair of the State Affirmative Action Committee throughout the terms of four Nebraska governors. In partnership with the NAACP, Mr. Smith developed initiatives to support youth and university students, to improve police-and-community relations and to increase jobs for minorities in trade unions and restaurants. In collaboration with the Great Plains Black Museum, Mr. Smith published "Visions of the Great Plains", "History of Blacks in Nebraska from 1865". He is a co-creator of Discover Omaha, a board game used in Omaha schools. Mr. Smith has been honored with the UNO Distinguished Alumni Achievement Award and was the only photojournalist ever inducted into the Nebraska High School Sports Hall of Fame.

THANK YOU! The CHS Alumni Association is grateful to the volunteers on the Hall of Fame Committee chaired by Gary Willis '90 and the Dinner Committee headed by Judy Church Blazek '58. Without their dedication, this signature event would not be possible.

To nominate someone for the 2006 Hall of Fame, please request a form from Gary Willis (12135 Wirt Street, Omaha 68164 or grwillis@cox.net) or find it on our web site www.centralhighomaha.org. Nominations are considered for three years.

We welcome your ideas! If you would like to become more involved with the Hall of Fame, please contact Gary.

PLEASE CUT AND RETURN BY SEPT. 26, 2005.

7th Annual CHS Hall of Fame Dinner

Thursday, October 6, 2005

Dinner – CHS Courtyard 6 p.m. / Program – CHS Auditorium 7:30 p.m.

Price – \$40 per person or \$320 for a table of eight

Name: _____

Class Of: _____

Street Address: _____

City, State and Zip: _____

Phone Number: _____

I would like to reserve space for _____ people at \$40 each.
Total enclosed \$ _____.

I would like to reserve a table for eight for \$320.
(If you are paying for a table, please provide a list of the names of those seated with you.)

Please make your check payable to the Central High School Foundation.
Your check must accompany your reservation and be received by Sept. 26, 2005.
If you have questions, please contact Judy Blazek at (402) 397-4444

Mail to CHS Foundation / Hall of Fame Dinner,
PO Box 31610, Omaha, NE 68131-0610



CHSAA President's Column - From The Desk Of President Mary Moberg '51

For many people, this time of year means "Back to School," no matter how old you are, or whether you have kids in school or not.

This generation of Central students is lucky in so many ways. Air conditioning circulates cool air to the classrooms filled with computers and other high-tech equipment. A new stadium, cafeteria and other facilities create a campus that's on par with the best in the nation.

On the other hand, the class of 2006 can't remember ever crossing the Courtyard and breathing in fresh air between classes. The statues of classical figures that once adorned the halls and staircases have vanished. Many of our cherished traditions, such as "Miss Central," are long gone.

What remains are the common threads that weave between the generations to make the fabric of a Central education. Academic excellence, a naturally occurring ethnic and socio-economic diversity, a superb faculty and a graceful, dignified setting along with a host of social and educational opportunities have been a part of the Central experience for more than 125 years.

For those of us involved in the Alumni Association, our passion for Central doesn't diminish. We still get a thrill when we throw our heads back to admire the architecture, or to applaud graduates' achievements, or to laugh at a performance at "Road Show" or the school comedy.

We hope you'll join us. The Alumni Association must have your membership to survive, and today's Central needs its alumni to keep it strong. Please make a contribution today. It doesn't need to be a financial gift (although those are nice, too!). There are dozens of Alumni Association committees that are eager for your help. Or simply reach out to a lost friend through our website. Volunteer at the school for an afternoon. Even the smallest steps can have a huge impact.

Please keep in touch. Next time you're in town, stop by Central. You'll continue to be amazed. Go Eagles!

Mary Moberg

Mary Moberg, CHSAA President

New Inside!

The Fall 2005 issue of the Alumni Register - featuring the CHS Hall of Fame 2005 - is included in this year's annual report. Please see pages 10 - 12.



Keep In Touch!

Please help us keep our information current. If the mailing information on this newsletter is outdated or incorrect, PLEASE let us know by calling (402) 556-1996 or emailing chsfoundation@cox.net.



P.O. Box 31610
Omaha, NE 68131-0610
Return Service Requested

Non-Profit Org.
U.S. Postage
PAID
Permit Number 1828
Omaha, NE 68102

Visit us on the web at www.centralhighomaha.org



Don't Miss The Central High School 2005 Hall of Fame!

See pages 10 and 11 for event information, as well as photos and biographies of this year's honorees. A dinner reservation form has also been provided on page 11.



CHS Principals Commemorated in Art

Artwork honoring Central High Principals from 1871 to the present now graces the hallway outside the main Auditorium. The handmade and hand painted ceramic tile artwork was created by artist Patty O'Connor-Seger of Starkville, MI. and donated to the school by the CHS Class of 1946.

The artwork stretches 12 feet horizontally and features each principal's name and dates of service. The names are surrounded by illustrations of important inventions and elements of popular culture of each era (i.e., a DNA helix signifying the 1950s, blue jeans for the 1870s, the Mars Rover for 1990s, etc).

"This sculpture not only honors those Principals who served Central over the past 125 years, but also presents a fun glimpse into life during the different decades," said Eunie Denenberg, chairman of the Class of 1946 effort. "We hope current students are prompted to consider how Central's students and traditions are part of the history of the community and the larger world."

CHS Reunion Schedule

If you need help planning your reunion, just give us a call at (402) 556-1996. We're here to help with mailing lists, arrangements and other details.

Reunion Date	Reunion Class
September 2-3, 2005	Class of 1995 (10th)
September 9-11, 2005	Class of 1945 (60th)
October 14-16, 2005	Class of 1955 (50th)
October 15, 2005	Class of 1975 (30th)
Date TBD, 2006	Class of 1976 (30th)
May 26-29, 2006	Class of 1996 (10th)
July 21-23, 2006	Class of 1956 (50th)
August 18-20, 2006	Class of 1966 (40th)
October 5-7, 2006	Class of 1951 (55th)
Date TBD, 2007	Class of 1947 (60th)
Date TBD, 2007	Class of 1967 (40th)
Date TBD, 2009	Class of 1964 (45th)

Yes! I want to support Central with membership in the CHS Alumni Association!

Membership is good for one calendar year from the date you join.

Last Name: _____ First Name: _____ Middle Initial/Maiden Name: _____

Address: _____ City: _____ State: _____ Zip: _____ Phone: _____

Email Address: _____ Year Graduated: _____

Spouse's Name (If CHS Graduate) And Year: _____

Annual Membership Levels:

- \$15 Bronze Eagle
 \$25 Silver Eagle
 \$50 Golden Eagle
 \$100 Platinum Eagle
 \$250 Emerald Eagle
 \$500 Diamond Eagle

My employer provides matching gifts (form attached.)

Enclosed is a check payable to CHS Alumni Association, P.O. Box 31610, Omaha, NE 68131-0610 or charge to (circle one): Visa Mastercard American Express Discover

Card Number: _____ Expiration Date: _____

Name On Card: _____ Signature: _____