



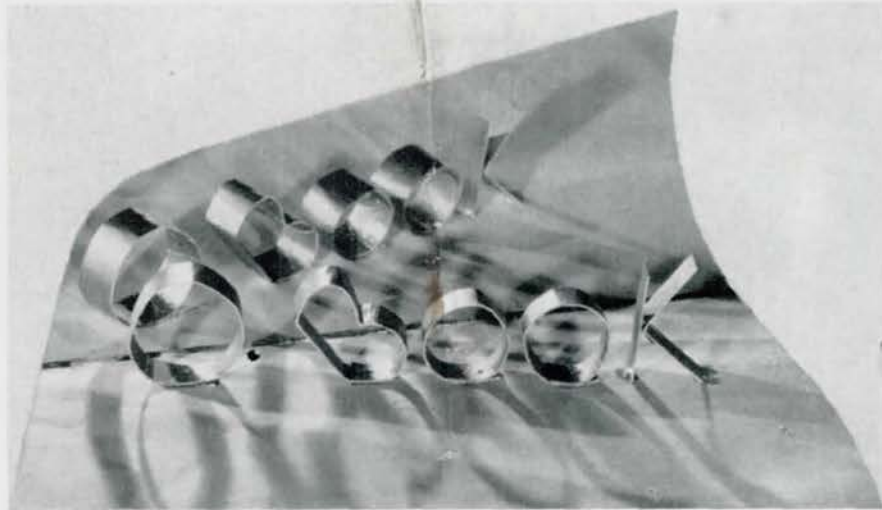


K. Loukas



CENTRAL ISSUE

M. Diehl



D. Hovorka

Central High School

OMAHA » « NEBRASKA

VOLUME LVIII

1944



FRED HILL » » » Principal

STAFF

EDITOR-IN-CHIEF

LOIS ANN SNYDER

ASSOCIATE EDITOR

ARLENE COOPER

SENIOR ALBUM EDITORS

ADELENE COAD
OLYVE MILLER

PICTURE EDITOR

VIVIEN SMITH

ASSISTANTS

SHIRLEY LIERK
NATHALIE MASON
MARY STUHT

ART EDITORS

DUANE HOVORKA
MARILYN DIEHL

CIRCULATION MANAGER

ROBERT FAIER

PROMOTION MANAGER

ROSEMERRY EASTLACK

BUSINESS MANAGER

BEVERLY ULMAN

MILITARY EDITOR

HERBERT WINER

SPORTS EDITOR

PETER ISACSON

LITERARY ADVISER

ANNE LANE SAVIDGE

ART ADVISER

MARY ANGOOD

BUSINESS MANAGER

O. J. FRANKLIN

EXECUTIVE SPONSOR

JULIA CARLSON

SENIOR CLASS SPONSORS

RUTH PILLING
HAROLD EGGEN
GRACE KNOTT
FLORENCE ROUSH
LLOYD RICHARDS
C. J. SIMPSON

CENTRAL HIGH SCHOOL FACULTY

ANDREW NELSEN
Assistant Principal

FRED HILL
Principal

FRANK Y. KNAPPLE
Dean of Boys

ENGLISH

Tillie C. Anderberry
Bess Bozell
Nell Bridenbaugh
Julia T. Carlson
Josephine Frisbie
Virgene L. McBride
Bertha Neale
Ruth H. Pilling
Frank M. Rice
Lloyd R. Richards
Helen L. Sommer
Martina Swenson
Augusta K. Turpin
Ida A. Ward
Alice West
Myrna V. Jones

MATHEMATICS

Gilbert E. Barnhill
R. B. Bedell
Maybelle W. Burns
Grace E. Fawthrop
Clifford J. Ireland
Pearl Judkins
Andrew Nelsen
Virginia Lee Pratt

HISTORY

Geneive W. Clark
Irma Costello
Mary E. Elliott
Elsie Fisher
Juliette Griffin
Elizabeth Kiewit
Mary A. Parker
Norman Sorenson

MODERN LANGUAGES

Bess Bozell
May Mahoney
Marguerite Rosemont

LATIN

Josephine Frisbie
Ruth H. Pilling
Bessie S. Rathbun

PHYSICAL SCIENCE

F. H. Gulgard
J. G. Schmidt
C. J. Simpson

NATURAL SCIENCE

Harold Eggen
Helen Lane
Harold O. Peterson
C. J. Simpson

SOCIAL SCIENCE

Autumn Davies
Ada Ewing
Irene H. Jensen
Frank Y. Knapple

COMMERCIAL

Betty Jayne Backlund
Marguerette R. Burke
Edna S. Dana
Ada Ewing
Grace M. Knott
Angeline R. Tauchen

MUSIC

Lytton S. Davis
Irene H. Jensen
Mary W. Kern
Ardis M. Larson
Elsie Howe Swanson
Marion Schelberg

HOUSEHOLD ARTS

Fern McCreedy
Florence Roush

STAGE MANAGER

Frank M. Rice

MECHANICAL ARTS

Mary Angood
O. J. Franklin

ART

Mary Angood

EXPRESSION-DEBATE

Myrna V. Jones
Lloyd R. Richards
Josephine Tope

JOURNALISM

Anne Lane Savidge

PHYSICAL TRAINING

Betty Jayne Backlund
Vernon H. Ekfelt
Marian L. Treat
Stuart T. Baller
Norman Sorenson

CLASS COUNSELORS

Freshman

Elizabeth Kiewit
Frank M. Rice

Sophomore

Josephine Frisbie
Harold O. Peterson

Junior

Irene H. Jensen
Frank Y. Knapple

Senior

Ruth H. Pilling
Andrew Nelsen

ROTC

Sgt. Palmer Peterson
F. H. Gulgard
Captain B. F. Clark

SCHOOL TREASURER

O. J. Franklin

SCHOOL NURSE

E. G. Dorway

LIBRARY

Catherine S. Blanchard
Hazel C. Stewart
Margaret Weymuller

OFFICE

Adrian Westberg
Thelma Stenlund

ATTENDANCE CLERK

Shirley Graser

BOOKROOM

R. B. Bedell
Rose Nisi

CAFETERIA

Minnie Nansel, Manager



HIGHER BRASS

D. Hovorka

**NORMAN S. WILLIAMS**

National Honor Society

President, June. ROTC (1,2,3,4), Captain (4); Military Police (2,3); C.O.C. (4); Sergeant at Arms (4); N.C.O.C. (3); Air Raid Warden (4); Bowling (4); Homeroom Representative (1,3); Intramural Sports (1,4); Junior Honor Society (2); Latin Club (2); Mathematics Society (4); Road Show (3,4); Student Control (2,4); Track (1,2,3,4); Rationing (3,4); Scrap Drive (3); Victory Corps (3,4); Senior Committee (4)

LOIS ANN SNYDER

National Honor Society

Vice President, June. O-Book Staff (4), Editor-in-Chief (4); All-Girls' Party (4); Junior Honor Society (1,2,3); Register Staff (3,4), Reporter, Make-up Assistant (3), Associate Feature Editor (4); Girls' Rifery (2); Latin Club (2), Sergeant at Arms (2); Lininger Travel Club (1,2,3); Central High Players (2,3,4), Secretary (4); Central Colleens (1,2,3,4), Vice President (4); Victory Corps (4); Rationing (4); Northwestern Journalism Institute, Honor Graduate (3); Spanish Club (2,3,4), Treasurer (4)

**SCOTT CHRISTIAN**

Treasurer, June. ROTC (1,2,3,4), First Lieutenant (4); C.O.C. (4); Air Raid Warden (4); N.C.O.C. (3); Military Police (2,3); Homeroom Representative (4); Spanish Club (1,2,3,4), Sergeant at Arms (2); Intramural Sports (1,4); Track (1,2,3); Mathematics Society (4); Road Show (3); Student Control (4); Victory Corps (3); Rationing (4); Silent Platoon (3)

PETER ISACSON

National Honor Society

Secretary, June. Register Staff (3,4), Sports Editor (4); O-Book Staff (4), Sports Editor (4); Tennis (3,4); Junior Honor Society (1,2,3); O-Club (4); Homeroom Representative (3); Chess Club (4); Boys' Bowling (2,3,4), Secretary (4); Concert Band (3); Road Show (4)

**OLYVE NORMA MILLER**

National Honor Society

Sergeant at Arms, June. Register Staff (4), Co-editor of Senior Album (4); Girls' Junior Glee (1); Girls' Senior Glee (2); Music Festival (1); All-Girls' Party (1,4); Central Colleens (2,3,4); Central High Players (2,3,4); Class Officer, President (1); Junior Honor Society (1,2,3); Latin Club (2,3), Sergeant at Arms (3); Lininger Travel Club (1,2,3,4); Road Show (4); Spanish Club (3,4); Student Control (2,3,4); Rationing (4); Victory Corps (3); Tennis (2,3,4); Riding Club (2)

JOHN S. KRUSE

Sergeant at Arms, June. A Cappella Choir (2); Music Festival (1,2); Boys' Junior Glee (1); Boys' Senior Glee (1); Road Show (3,4); ROTC (1,2,3,4), Captain (4); C.O.C. (4), Secretary (4); Crack Squad (3); Air Raid Warden (3,4); N.C.O.C. (2,3); Scrap Drive (3); Victory Corps (3); Homeroom Representative (4); Intramural Sports (4); Bowling

**NORMAN CAVE THOMAS**

National Honor Society

Senior Homeroom Chairman. A Cappella Choir (2); Boys' Junior Glee (1); Boys' Senior Glee (2); Central High Players (3,4), Treasurer (4); Fall Play (3,4); Chess Club (3); Debate Squad (2,3,4); Debate Team (3,4); Discussion Club (4); Sergeant at Arms (4); Homeroom Representative (1,4); Junior Honor Society (2); Music Festival (1,2); National Thespians (4); Road Show (2,3,4); American Legion Oratory Contest (4); Student Council, Vice President (4), President (4); Rationing

MAUDE E. BROGAN

National Honor Society

Student Council President (4); A Cappella Choir (3,4); Girls' Junior Glee (1,2); All-Girls' Party (4); Central Colleens (4); Central High Players (3,4); Homeroom Representative (2,3); Junior Honor Society (2,3); Latin Awards (2,3); Latin Club (2,3), President (3); Lininger Travel Club (1,2,3,4); Music Festival (1,2,3,4); Register Staff (3,4), Make-Up Assistant (3,4), Feature Writer (4), Editorial Writer (3); O-Book Circulation (2,4); Spanish Club (4); Student Control (2,3,4)

**RICHARD A. CARLSON**

Senior Homeroom Chairman. ROTC (1,2,3,4), Captain (4), Adjutant (4); Crack Squad (2,3,4), Lieutenant Commander (4); C.O.C. (4); N.C.O.C. (3); Military Fire Patrol (4); Military Ushers (3,4); Senior Committee (4); Homeroom Representative (2,4); Road Show (1,2,3,4); O-Club (3,4); Bowling (1,2,3,4), Sergeant at Arms (4); Basketball (1,4); Track (1,4); Tennis (3,4); Golf (2); Spanish Club (2,3); Junior Red Cross (3); Air Raid Warden (4); Student Control (2); Scrap Drive (3)

RICHARD C. MINARD

National Honor Society

Senior Homeroom Chairman. Junior Honor Society (2,3); Mathematics Society (2,4); Track (1); Mathematics Award (4)

**JOHN R. MARKS**

National Honor Society

Road Show Manager (4). ROTC (1,2,3,4), Captain (4), Freshman battalion Adjutant (4); N.C.O.C. (3); C.O.C. (4); Military Police (2,3); Military Fire Patrol (4); Boys' Rifle Team (4); Air Raid Warden (4); Music Festival (2,3,4); A Cappella Choir (3,4); Boys' Junior Glee (2); Boys' Senior Glee (2); Opera (3,4); Usher (3); Road Show (3,4); Student Council (4); Sergeant at Arms (4); Junior Honor Society (3); Latin Club (2); Sergeant at Arms (2); Track (1,2); Rationing (3)

NATHALIE L. MASON

National Honor Society

Senior Reporter (4). Register Staff (4); O-Book Staff (4); Senior Homeroom Sergeant at Arms (4); Homeroom Representative (4); A Cappella Choir (3,4); Girls' Senior Glee (2); Girls' Junior Glee (1); Music Festival (1,2,3); Opera (3,4); Central Colleens (3,4); Latin Club (2), Sergeant at Arms (2); Lininger Travel Club (1,2,3,4); Roller Skating Club (2); Spanish Club (3); Student Control (1,2,4); Rationing (3); Victory Corps (3,4); Junior Honor Society (1,2,3); Senior Play (4)

ARLENE COOPER

National Honor Society

O-Book Staff, Assistant Editor. All-Girls' Party (1,2,3); Register Staff (3,4); Reporter (3); Associate Feature Editor (4); Road Show Advertising (4); Co-Chairman (4); Central Colleens (2,3); Central High Players (1,2,3,4); Corresponding Secretary (4); Junior Honor Society (1,2,3); Latin Club (1,2,3); Lininger Travel Club (2,3); Student Control (2); Rationing (3,4); Pan-American Club (3); Victory Corps (3); Fall Play (2); Senior Committee (4); O-Book Circulation (4); Press Club (4)

ROBERT GERALD FAIER

National Honor Society

O-Book Staff, Circulation Manager. Register Staff (3,4); Make-Up Editor (4); National Journalism Institute, Northwestern University (3); Camera Club (1,2); Central High Players (3,4); Chess Club (3); Discussion Club (4); Mathematics Society (3,4); Junior Honor Society (2,3); ROTC (2,3,4); Second Lieutenant (4); C.O.C. (4); Air Raid Warden (3); Military Fire Patrol (3); Stamp Club (2,3); Secretary (3)

VIVIEN MARIE SMITH

National Honor Society

O-Book Staff, Picture Editor. Senior Homeroom Vice Chairman (4); Class Officer, Vice President (1); Register Staff (4); All-Girls' Party (2); Central Colleens (1,2,3,4); Central High Players (3,4); G.A.A. (1); Girls' Rifery (2); Latin Club (1,2); Lininger Travel Club (1,2,3,4); Spanish Club (2,3,4); Homeroom Representative (2,3); Junior Honor Society (1,2,3); Student Control (2,3,4); Rationing (3,4); Victory Corps

ADELENE VIRGINIA COAD

National Honor Society

O-Book Staff, Senior Album Co-Editor. Register Staff (4); Feature Writer (4); Junior Honor Society (1,2,3); Student Council (1); Senior Homeroom Secretary-Treasurer (4); Homeroom Representative (1,2,3); Central High Players (1,2,3,4); Latin Club (2,3); Treasurer (3); Central Colleens (2,3,4); Lininger Travel Club (1,2,3,4); Pan-American Club (3); Spanish Club (3); Victory Corps (3); Chairman (3); Rationing (4); Road Show (4); Senior Play (4); Lead (4)

HERBERT JEROME WINER

National Honor Society

O-Book Staff, Military Editor. ROTC (1,2,3,4); Second Lieutenant (4); Silent Platoon (3,4); Alternate Commander (4); Military Police (1,2,3); Military Fire Patrol (2); Usher (2,3); N.C.O.C. (3); C.O.C. (4); Air Raid Warden (3,4); A Cappella Choir (2,3,4); Music Festival (1,2,3,4); Opera (2,3,4); Register Staff, Make-Up Assistant, Reporter (3,4); O-Book Circulation (3); Athletic Manager, Track (3,4); Central High Players (1,2,3,4); Junior Honor Society (1,2,3); Road Show (2,3,4)

BEVERLY BLAIR ULMAN

National Honor Society

O-Book Business Manager. All-Girls' Party (1,4); Princess (4); Central Colleens (2,3,4); Central High Players (2,3,4); D.A.R. Award (4); Girls' Rifery (1); Homeroom Representative (1); Junior Honor Society (1,2,3); Latin Club (2); Lininger Travel Club (1,2,3,4); Mathematics Society (3,4); Treasurer (3,4); Register Staff (4); Literary Editor (4); Pan American Club (3); Rationing (4); National Journalism Institute, Honor Graduate (3); Riding Club (2); Victory Corps (3)

A. DUANE HOVORKA

O-Book Staff, Art Editor. Commercial Awards (2,3); Art Contest (2,3,4); Senior Art (2,3,4); Basketball (1,2,3,4); Track (1,2,3,4); Football (1,2,3,4)

MARILYN ANN DIEHL

National Honor Society

O-Book Staff, Art Editor. Denver University Dramatics Scholarship (3); Fall Play (4); Central High Players (3,4); Treasurer (4); Art Contest (4); Senior Art (4); National Thespians (4); Secretary-Treasurer (4); All-Girls' Party (2,3); Central Colleens (3,4); Homeroom Representative (3,4); Junior Red Cross (1,2,3,4); Treasurer (4); Intercity Red Cross Council (2,3,4); Rationing (2,3); Lininger Travel Club (2,3,4); Student Control (2,3,4); Victory Corps (3); Road Show (4); Senior Committee

HUGH MACTIER

National Honor Society

Register Staff, Managing Editor. A Cappella Choir (1,2,3,4); Bowling (3,4); Central High Players (4); Crack Squad (3); Junior Honor Society (2,3); Latin Club, Treasurer (2); Male Quartette (4); Mathematics Society (3); Music Contest (4); Music Festival (1,2,3,4); National Thespians (4); Register Staff (3,4); Road Show (2,3,4); Assistant Manager (4); ROTC (1,2,3,4); Captain (4); C.O.C. (4); President (4); N.C.O.C. (2,3); Opera (2,4); National High School Journalism Institute

ROSEMERRY EASTLACK

Register Staff, Editor-in-Chief. Register Staff (3,4); World-Herald Correspondent (4); O-Book Staff (3,4); Picture Editor (3); Promotion Manager (4); Debate Team (3,4); Class Officer, Treasurer (3); Central High Players' Plays (3,4); Central High Players (3,4); Central Colleens (1,2,3,4); President (4); All-Girls' Party (4); Junior Honor Society (3); National Thespians (4); Road Show (3,4); Spanish Club (1,2,3,4); Secretary-Treasurer (3); President (4)

RUTH KULAKOFSKY

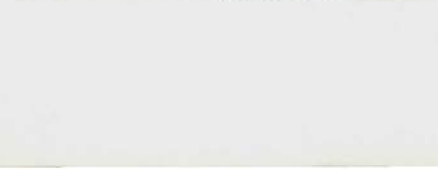
National Honor Society

Register Staff, News Editor. All-Girls' Party (1); Central Colleens (2,3); Cheer Leader (2,3); Class Officer, Vice President (1); Homeroom Representative (1); Junior Honor Society (1,2,3); Latin Award (2); Latin Club (2,3); President (3); Lininger Travel Club (1,2,3,4); O-Book Staff, Circulation (3,4); Register Staff (3,4); Road Show (1,2,3,4); Spanish Club (4); Student Council (1); Student Council Convention (1); Rationing (3); Victory Corps (3); Northwestern Journalism Institute (3)

EVA CHARLOTTE SWANSON

National Honor Society

Register Staff, Business Manager. Central Colleens (1,2); Commercial Awards (4); Girls' Junior Glee (1); Girl Reserves (4); Junior Honor Society (1,2,3); Lininger Travel Club (1,2,3,4); Music Festival (1); O-Book Staff (3); Assistant Business Manager (3); Spanish Club (2,3); Rationing (3)





RUTH ACKER

G.A.A. (1,2); Junior Honor Society (3); Student Control (3); Tennis (1); Volley Ball (1)

JIM R. ADDISON

Wrestling (2,3)



ROBERT HOWARD AHMANSON

A Cappella Choir (3,4); Boys' Junior Glee (2); Boys' Senior Glee (2); Bowling (2); Camera Club (1); Music Festival (2,3,4); Orchestra (1); Road Show (3,4); ROTC (1); Spanish Club (2,3); Speakers Bureau (1); Stamp Club (1); Student Control (4); Scrap Drive (3); Road Show (4); Senior Play (4); Senior Committee (4)

ROBERT M. ALLEN

Basketball (3,4); Bowling (4); Football (2); Golf (3); Intramural Sports (2); Track (2); Spanish Club (3); Homeroom Representative (2); Road Show (4); Senior Play (4)



MARJORIE ANN ALLEN

National Honor Society

A Cappella Choir (3,4); Girls' Junior Glee (1); Girls' Senior Glee (2); Music Festival (1,2,3,4); Opera (3,4); All-Girls' Party (2,3); Central Colleens (1,2,3,4); Central High Players (4); Pep Squad (4); Junior Honor Society (1,2); Lininger Travel Club (1,2,3,4); Road Show (1,2,3,4); Spanish Club (4); Sergeant at Arms (4); Student Control (4); Student Council (2,3); Rationing (3); Scrap Drive (3); Victory Corps (3)

BETTY JO ANDERSON

Lininger Travel Club (2,3,4); Central High Players (3,4); National Thespians (4)



MARY KATHERINE ANDRE

Central Colleens (1,2,3,4); Central High Players (1,2,3,4); Central High Players' Plays (1,2,3); Class Officer, Vice President (3); Homeroom Representative (2,3); Lininger Travel Club (1,2,3,4); National Thespians (4); O-Book Staff (4); Register Staff (4); Reporter (4); Student Control (2,3,4); Scrap Drive (3); Pep Squad (4); Road Show (4); Senior Play (4)

WILLIAM LYON ANDREWS

A Cappella Choir (3,4); Boys' Junior Glee (2); Boys' Senior Glee (2); Music Festival (2,3,4); Opera (4); Orchestra (1); Homeroom Representative (4); Pan-American Club (3); Wrestling (3,4); Baseball (1); Basketball (1); ROTC (2); Road Show Advertising (3)



GARTH ARMSTRONG

JOHN ARMSTRONG

Band (1,2); Marching (1,2); Concert (1,2); Football (2,3); Track (2); Wrestling (1)



MARGARET LOU ASTLEFORD

National Honor Society

Junior Honor Society (1,2,3); Latin Club (2); Latin Award (2); Girls' Junior Glee (1,2); Music Festival (1); G.A.A. (1); Central Colleens (2); Lininger Travel Club (2); Student Control (2)

BARBARA ELAINE BACON

Orchestra (1); Latin Club (1,4)

LEONARD WESLEY BACON

Boys' Rifle Team (2,3,4); Captain (4); Intramural Sports (2,3,4); O-Club (3,4); ROTC (2,3,4); Captain (4); C.O.C. (4); N.C.O.C. (2,3); Road Show (4); Air Raid Warden (4); Victory Corps (3,4); Roller Skating Club (4); President (4); Range Officer (4)

PRISCILLA ANN BAILEY

National Honor Society

Class Officer (3); Sergeant-at-Arms (3); Junior Honor Society (1,2,3); Latin Awards (3); Latin Club (2,3); Mathematics Society (4); Linger Travel Club (1,2,3,4); Vice President (4); Homeroom Representative (3); Central Colleens (3,4); O-Book Staff (4); Register Staff (4); Reporter (4); Proofreader (4); Student Control (3); All-Girls' Party (4); Scrap Drive (3); Central High Players (2); Senior Play Committee (4)

LEE ANN BASSO

Pan-American Club (3); Student Control (4)

LOMA IMOJEAN BATHH

Baseball (3); Basketball (4); Volley Ball (3); Girls' Junior Glee (1); Voice (2)

RAYMOND R. BATTRELL, JR.

A Cappella Choir (2); Boys' Octette (2); Air Raid Warden (3,4); Boys' Junior Glee (1); Boys' Senior Glee (2); Homeroom Representative (1); Junior Honor Society (1,2,3); Military Fire Patrol (3,4); Music Contest (2); Music Festival (1,2); Road Show (3); ROTC (1,2,3,4); Second Lieutenant (4); Silent Platoon (3); Spanish Club (2,3); Student Control (2); Rationing (2); C.O.C. (4); N.C.O.C. (2,3); Usher (2,3,4)

KENNETH A. BEACHLER

Air Raid Warden (3); Spanish Club (1,2); Student Control (2)

FRANK BEALER

Roller Skating Club (2)

MARY MARGARET BELL

National Honor Society

A Cappella Choir (3,4); Girls' Junior Glee (1); Girls' Senior Glee (1,2); Music Festival (1,2,3,4); Opera (3,4); Central Colleens (2,4); Homeroom Representative (3); Latin Club (2); Linger Travel Club (1,2,3); Student Control (2,3,4); Pan-American Club (3); Rationing (2,3); Victory Corps (3); Junior Honor Society (1,2,3)

JACK BELMONT

National Honor Society

Intramural Sports (1,2); Football (1); Baseball (2,3,4); O-Club (4); Junior Honor Society (3); Homeroom Representative (1)

BARBARA ANN BENNETT

Music Contest (4); State Music Contest (4); National Music Contest (4); Homeroom Representative (4); Linger Travel Club (3); Central Colleens (3,4); Spanish Club (3,4); Student Control (3); Pan-American Club (3); Road Show (4)

EDWARD O. BENNETT

Air Raid Warden (4); Camera Club (4); Roller Skating (4); Stage Crew (4); Student Control (4)

MARJORIE BENSON

A Cappella Choir (2,3,4); Opera (2); Girls' Senior Glee (1); Girls' Junior Glee (1); Music Festival (1,2,3,4); Junior Honor Society (1); Register Staff (4); Reporter (4); O-Book Staff (4); Linger Travel Club (1,2,3,4); Latin Club (1,2,3,4); Scrap Drive (3); Pep Squad (4); Red Cross Work (4); Road Show (4); Student Control (4)



**BARBARA BERGSTROM**

National Honor Society

A Cappella Choir (3,4); Girls' Junior Glee (1); Girls' Senior Glee (2); Music Festival (1,2,3); Opera (3); Road Show (4); Junior Honor Society (1,2,3); Latin Awards (3); Student Control (2,3,4); Central Colleens (4); Rationing (2); Victory Corps (3)

**JERRY W. BERIGAN**

Air Raid Warden (3,4), Commander (4); Bowling (3); Latin Club (2); Military Fire Patrol (3,4), Commander (4); Military Police (2,3); Road Show (3,4); ROTC (1,2,3,4), Captain (4); Silent Platoon (3); Track (2); C.O.C. (4); N.C.O.C. (3); Military Usher (2,3)

WILLIAM LEWIS BERNER

ROTC (1,2,3,4), Captain (4); N.C.O.C. (3); C.O.C. (4); Crack Squad (3); Air Raid Warden (3,4); Military Police (2,3); Track (1,2,3); Athletic Awards (2,3); Intramural Sports (1,2,3); Basketball (1); Bowling (4); O-Club (2,3,4); Football (1); Golf (1,2,3); Missouri Valley Champion (2); Victory Corps (3); Latin Club (2); Homeroom Representative (3); Road Show (3,4); Senior Committee (4); Student Control (2); Scrap Drive (3); Rationing (2)

SELMA RUTH BERNSTEIN

Central High Players (3,4); Lininger Travel Club (4); Pan-American Club (3)

**GEORGE JOSEPH BIGHIA**

ROTC (3,4), Sergeant (4); N.C.O.C. (4); Silent Platoon (3,4); Military Police (3); Road Show (3,4); Music Festival (1); Orchestra (1); Student Control (4); Latin Club (2,3)

KATIE MAE BILLINGSLEY

A Cappella Choir (4); Girls' Senior Glee (2,3); Girls' Junior Glee (1); Music Festival (1,2,3,4); Central High Players (3); Lininger Travel Club (3,4); G.A.A. (3,4)

**JUDY BIRGINAL**

G.A.A. (1); Roller Skating Club (1,2); Central Colleens (1,2); Student Control (1,2,3,4)

SHIRLEY S. BLOOM

Senior Art (4); Art Contest (4); Central Colleens (4); Spanish Club (3,4); O-Book Staff (4)

**JOE BONFANTE**

Football (4); O-Club (4); Wrestling (2,3,4); Stage Crew (3,4); Student Control (3)

ALBERTA BOOTH

G.A.A. (4); Basketball (1,2,4); Volley Ball (1,2,4); Victory Corps (3)

**DONNIE H. BOOTH**

A Cappella Choir (2,3,4); Spring Festival (2,3,4); Boys' Senior Glee (2); Boys' Junior Glee (1); Opera (3,4); Spanish Club (3); Track (3); Student Control (4)

CAROL HOPE BOWMAN

All-Girls' Party (1); Bowling (1); Central Colleens (3); Girls' Junior Glee (1); Girls' Senior Glee (2); Lininger Travel Club (2,3); Music Festival (1,2); Road Show (1); Roller Skating Club (1); Spanish Club (3,4); Student Control (4); Riding Club (2); Pan-American Club (3); Fall Play Publicity (4)

ALAN L. BRAMSON

National Honor Society

ROTC (1,2,3,4), Captain (4); ROTC Band (1,2,3,4), Commander (4); District Music Contest (2,3,4); Reginal Music Contest (2,3); Orchestra (1,2,3,4); Dance Band (1,2,3,4), Leader (4); N.C.O.C. (3); C.O.C. (4); Register Staff (3,4), Feature Writer (3,4); Road Show (1,2,3,4); Junior Honor Society (1,2); Military Fire Patrol (3,4); Air Raid Warden (3,4)

EDITH BERNICE BRAU

Basketball (1); G.A.A. (1); Girl Reserves (1); Homeroom Representative (1); Victory Corps (3); Rationing (3)

JEAN CAROLYN BREETZKE

G.A.A. (1); Girls' Bowling League (1); Girl Reserves (2,3); Central Colleens (3,4); Lininger Travel Club (3,4); Latin Club (2); Student Control (3,4); Victory Corps (3)

NATHANIEL ALEXANDER BROWN

Intramural Sports (2); Basketball (3); Track (3); Student Control (1)

THOMAS M. BROWNLEE

Central High Players (4); Discussion Club (2,4); Camera Club (2); ROTC (1,2,3,4), Second Lieutenant (4); Crack Squad (4); Air Raid Warden (3); Opera Tickets (4), Co-Chairman (4); Student Control (3); Tennis Team (2,4); Road Show (4); N.C.O.C. (4); Speakers Bureau (2); Debate Squad (4); Scrap Drive (3); Rationing (3); C.O.C. (4); Senior Play (4); Business Manager (4); Military Fire Patrol (3)

PAULA CATHERINE BURDEN

Basketball (3); Roller Skating Club (2,3,4)

PHYLLIS M. BURGESS

Art Contest (2); G.A.A. (4); Girl Reserves (2,4); Homeroom Representative (2); Intramural Sports (1); Roller Skating Club (1,2); Spanish Club (1); Victory Corps (3)

BARBARA BURKE

Girls' Junior Glee (1,2); Music Festival (1,2); All-Girls' Party (1,2); Homeroom Representative (4); Student Control (4); Make-Up (3)

MARILYNN JUNE BURNEY

Junior Honor Society (3); Girl Reserves (2,3,4); Spanish Club (2); Student Control (3,4); Victory Corps (3)

LAURA EVELYN MARIE BUTLER

A Cappella Choir (4); Girls' Junior Glee (1); Girls' Senior Glee (2,3); Music Festival (1,2,3,4)

PATTON CAMPBELL

A Cappella Choir (3,4); Air Raid Warden (3); Art Contest (2,3); Central High Players (2,3,4), Treasurer (3), President (4); Central High Players' Plays (3,4); Greenwich Villagers (2); Junior Red Cross (3); Latin Club (2,3), Secretary (3); Music Festival (3); National Thespians (3,4); Road Show (2,3,4); ROTC (1,2); Student Control (3); Tennis (3); Opera (3,4); Senior Play (4)

LUCILLE M. CARDELLA

Girls' Junior Glee (1); Girls' Senior Glee (1,2); Girl Reserves (2,3); Central Colleens (3); Student Control (2,3)





MARION ANN CARDELLA

Girl Reserves (2,3,4); Treasurer (4); Homeroom Representative (4); Central Colleens (3,4); Student Control (2,3)

JOHN NORMAN CARLEMAN

Central High Players (3,4); Sergeant-at-Arms (4); Central High Players' Plays (3,4); Fall Play (4); Discussion Club (4); Homeroom Representative (3); Latin Club (2); Military Police (3); Dance Band (4); National Thespians (4); Register Staff (4); Road Show (4); ROTC (1,2,3); Track (1); Hi-Y (4); Senior Play (4)



ARLENE MARIE CARLSON

Girls' Junior Glee (1,2); Baseball (1,2); Basketball (1,2)

GENEVIEVE M. CARLSON

National Honor Society

A Cappella Choir (4); Girls' Senior Glee (3); Music Festival (3,4); Opera (4); Junior Honor Society (3); Homeroom Representative (1); Student Control (2); Student Council (4); Lininger Travel Club (3); Central High Players (3); Central Colleens (3); All-Girls' Party (4)



BEVERLY JANE CARMICHEAL

G.A.A. (1); Student Control (4)

BETTY J. CARTER

National Thespians (4); Central High Players (3,4); Central High Players' Plays (4); Girls' Junior Glee (1); Girls' Senior Glee (2,3); Make-Up (4); Roller Skating Club (2,3); Student Control (2,3,4)



VIRGINIA MAE CHALOUPKA

Junior Honor Society (1); Student Control (3,4)

ROBERT WILLIAM CHANGSTROM

ROTC (1,2,3,4); Staff Sergeant (4); N.C.O.C. (4); Intramural Sports (3); Wrestling (3); Homeroom Representative (1,2)



MARION J. CHAPMAN

G.A.A. (1); Student Control (3)

ELIZABETH CHASE

A Cappella Choir (1); Girls' Junior Glee (1); Girls' Senior Glee (1,2); Music Festival (1,2); Lininger Travel Club (1,2); Student Control (1); G.A.A. (1)



IRENE RUTH CHERNISS

National Thespians (2,3,4); Central High Players (1,2,3,4); Central High Players' Plays (4); Music Festival (1); Road Show (3); Road Show Advertising (2); Roller Skating Club (1); Student Control (2); Make-Up (2,3); Girls' Junior Glee (1); Victory Corps (3)

MARTHA NAOMI CHILDS

Girls' Junior Glee (1,2,3); Girls' Senior Glee (3)

ALICE MARIE CHRISTIANSEN

Central Colleens (2,3,4); Central High Players (1,4); Class Officer (1); Secretary (1); French Club (1,2); Homeroom Representative (3); Lining Travel Club (1,2,3,4); O-Book Staff (4); Picture Committee (4); Register Staff (3,4); Reporter (3); Feature Writer (3,4); Road Show (4); Senior Homeroom Secretary (4); Student Control (1,2,4); Pep Squad (4); Victory Corps (3); All-Girls' Party (4); Princess (4); Senior Play (4)

DONNA MAXINE CHRISTENSEN

National Thespians (4); Central High Players (1,2,3,4); Junior Honor Society (1,2,3); Homeroom Representative (2,3); Student Control (2); Central Colleens (3,4); Girl Reserves (1)

JOHN EDWARD CHRISTLIEB

Bowling (1); Latin Club (1); ROTC (3); Ushers (1)

MARCIA LEE CIVIN

O-Book Staff (4); Register Staff (4); Ad Solicitor (4); Press Club (4); Girls' Junior Glee (2); Music Festival (2); Pan-American Club (3); Spanish Club (3,4); All-Girls' Party (3); Central Colleens (1,2); Lining Travel Club (1,2,3); Roller Skating Club (1,2); Student Control (2)

ROSELLE CLAYMAN

Central Colleens (1,2); Girls' Junior Glee (1,4); Home Economics (1,2,3,4); Music Festival (1); Roller Skating Club (2); G.A.A. (1)

ROBERTA A. CLINEFELTER

Girls' Junior Glee (1,2); Girls' Senior Glee (3); Junior Band (3); Music Festival (2,3); Latin Club (2); Spanish Club (3,4); Victory Corps (3); Student Control (3)

JOHN AMES CLOW

ROTC (1,2,3,4); Captain (4); Ushers (3,4); Crack Squad (2,3,4); Commander (4); Air Raid Warden (4); Baseball (2); Basketball (4); Bowling (3,4); Speakers' Bureau (1); Golf (2,3); Military Fire Patrol (4); Homeroom Representative (2,3); Scrap Drive (3); Student Control (3,4); Senior Play (4); C.O.C. (4)

KENNETH LLOYD COBB

ROTC (1,2,3,4); Second Lieutenant (4); N.C.O.C. (3); Military Supply (3,4); Military Fire Patrol (4); Usher (2); Student Control (4); Air Raid Warden (4); Bowling (4); Track (2); Scrap Drive (3); Basketball (2); Senior Play (4); C.O.C. (4)

MARSHALL E. COCHRAN

A Cappella Choir (4); Boys' Senior Glee (2); Boys' Junior Glee (1); Beginners' Band (2); Spanish Club (3); Student Control (3)

ARTHUR SEYMOUR COHEN

A Cappella Choir (3,4); District Music Contest (3); Orchestra (1,2,3); Chess Club (2,3); Discussion Club (4); Latin Club (3)

JOELLA FRENZER COHEN

Junior Honor Society (3); Register Staff (4); Reporter (4); Spanish Club (3); Commercial Awards (3,4); Girl Reserves (4); Student Control (2,3); Rationing (2,3)

GERALD MORTON COHN

ROTC (1,2,3,4); Silent Platoon (4); Road Show (4); Roller Skating Club (2); Spanish Club (3,4); Stamp Club (2); Student Control (2); Pan-American Club (4); Camera Club (1,2); Debate Team (4)





GERALDINE COHN

Central Colleens (2); Latin Club (1,2); Lininger Travel Club (2); Student Council (2); Riding Club (2); Senior Play (4)

LAWRENCE P. COMBINE

Boys' Junior Glee (1,2); Boys' Senior Glee (3,4); Central High Players (3,4); Roller Skating Club (3,4); ROTC (1,2); Speakers' Bureau (1); Student Control (1,2,3); Usher (1,2); Road Show (4)



ROBERT D. CONLEY

O-Club (4); Football (1,2,3); Wrestling (4); Basketball (1); Bowling (2); Military Police (2,3); Camera Club (1,2); Student Control (1,2)

NANCY M. CONSOLINO

All-Girls' Party (1,2,3); Baseball (1,2,3); Basketball (1,2,3); G.A.A. (1); Girl Reserves (1,2,4); Roller Skating Club (2); Volley Ball (1,2,4); Victory Corps (3)



M. JEAN COOK

Art Contest (2); Central Colleens (2,3,4); Central High Players (3,4); French Club (1); Girls' Riflery (1,2); Team (2); Homeroom Representative (3); Lininger Travel Club (1,3); National Thespians (4); Spanish Club (4); Student Control (3,4); Riding Club (2); Victory Corps (3); Senior Play (4); Fall Play, Property (4)

WILLIAM E. COOK

ROTC (2,3,4); First Lieutenant (4); Military Police (2,3); Crack Squad (3); Usher (2,3); Basketball (1,2); Bowling (4); Track (1,2); Pep Squad (4); Scrap Drive (2); Air Raid Warden (4); Latin Club (2); Road Show (3); Senior Committee (4); Senior Homeroom Sergeant-at-Arms (4); Student Control (4)



HOPE ARLENE CORKIN

All-Girls' Party (2,3); Central Colleens (2,3,4); Central High Players (1,2,3,4); Lininger Travel Club (2,3,4); Make-Up (3); Roller Skating Club (2); Spanish Club (2,3); Student Control (1,2,3,4); Central High Players' Plays (2,3)

ALFRED THOMAS CORNISH

ROTC (1,2,3); Usher (3); Central High Players (4); Victory Corps (3); Riding Club (2); Rationing (3); Homeroom Representative (4)



MARY JANE COSTANZO

All-Girls' Party (3); Baseball (1,2); Basketball (1,2); G.A.A. (1,2); Volley Ball (1,2)

NICKIE COSTANZO

Basketball (1,2); Baseball (1,2); Central Colleens (3); Homeroom Representative (4); Roller Skating Club (4); Student Control (3); Volley Ball (1,2); Pan-American Club (3)



LOIS A. CRAFT

Music Festival (1); Girls' Junior Glee (1); Central High Players (3,4); Central Colleens (3,4); G.A.A. (1,2); Student Control (4)

ALICE ESTELLE CULLINGHAM

Opera (3,4); A Cappella Choir (4); Girls' Senior Glee (3); Music Festival (3); Fall Play (4); Central High Players (3,4); Road Show (3); Central Colleens (4); Spanish Club (3,4); Greenwich Villagers (3); Student Control (3,4); Tennis (4); Titians (3); Pan-American Club (3); Pep Squad (4); Scrap Drive (3); Road Show (4); Senior Play (4)

WILLIAM CUNNINGHAM, JR.

Dance Band (4); Boys' Senior Glee (2); Road Show (4)

JEAN M. CURTIS

Junior Honor Society (2); Central Colleens (4); Latin Club (2);
Lining Travel Club (4); Spanish Club (4); Student Control (4);
Opera (4)

JACK STANLEY DAHLGREN

National Honor Society

ROTC (2,3,4), Second Lieutenant (4); Crack Squad (4); Military Police
(3); Silent Platoon (3); Track (1,2,3,4); O-Club (3,4); Junior Honor
Society (1,2); N.C.O.C. (3,4), Treasurer (4); Road Show (3,4); Ration-
ing (4); C.O.C. (4); Pep Squad (4), Co-organizer (4); Intermural
Sports (1); Bowling (4); Spanish Club (1,2)

JOAN ELIZABETH DASHIELL

Central High Players (4); Lining Travel Club (2,3,4); Spanish Club
(4); Student Control (2,4); Road Show (3,4)

HARVEY L. DAVIS

Basketball (1); Chess Club (1,2); Discussion Club (4), Treasurer (4);
Junior Honor Society (1,2); Mathematics Society (4); O-Book Staff
(4), Assistant Circulation Manager (4); Road Show Advertising (4);
Roller Skating Club (1); Student Control (4); Scrap Drive (3); Register
Staff (4), Assistant Circulation Manager (4)

ROBERT WARREN DELAPLANE

A Cappella Choir (3,4); Male Quartette (3); Music Contest (3); Music
Festival (2,3,4); National Thespians (4); Military Police (2,3);
N.C.O.C. (3); ROTC (1,2,3,4), Staff Sergeant (4); Air Raid Warden
(4); Pan-American Club (3); Greenwich Villagers (3); Fall Play (3),
Business Manager (3); Spanish Club (3); Road Show (3,4); Student
Control (3)

ANN DENENBERG

G.A.A. (1,2); Girls' Riflery (2); All-Girls' Party (1,2); Girl Reserves
(3); Student Control (4); Roller Skating Club (1); Pep Squad (4);
Spanish Club (1,2)

RAE L. DICKINSON

National Honor Society

All-Girls' Party (3,4); Central Colleens (2); French Club (2,3); Girls'
Riflery (2); Junior Honor Society (1,2,3); Latin Awards (2,3); Latin
Club (2,3); Lining Travel Club (1,2,3,4), Vice President (3), Presi-
dent (4); Register Staff (3,4), Reporter (3), Rewrite Editor (4); Road
Show (3,4); Speakers' Bureau (1); Student Control (2); Student Council
(3); Rationing (2,3,4); Pep Squad (4); Scrap Drive (3); Victory
Corps (3); Northwestern Journalism Institute, Honor Graduate (3);
Tutor (2,3); O-Book (3,4), Circulation (3,4)

LOIS RAE DILWORTH

Fall Play (4); Student Control (2,3,4); Homeroom Representative (3);
Latin Club (2); Lining Travel Club (1,2,3); Roller Skating Club (2,3);
Central High Players (3,4); Central Colleens (2,3,4)

SAM DISTEFANO

Homeroom Representative (1); National Athletic Honor Society (1,2,
3,4); O-Club (1,2,3,4); Intramural Sports (1,2,3,4); Baseball (1,2,3,4);
Basketball (1,2,3); Football (1,2); Scrap Drive (3)

JOHN R. DIXON

Central High Players (4); Latin Club (2)

RALPH DOANE





NAOMI DOWNS

Girls' Junior Glee (1)

BEVERLY JEANNE DRAKE

National Honor Society

O-Book Staff (4); Register Staff (4); Reporter (4); Junior Honor Society (1,2,3); Homeroom Representative (3); Road Show (4); Girls' Junior Glee (1); Orchestra (1); Stamp Club (3); Girls' Sergeant-at-Arms (3); Latin Club (3); Tutor (3); Pan-American Club (3); Lininger Travel Club (3,4); Central Colleens (3); G.A.A. (1); Volley Ball (1); Roller Skating Club (1); Greenwich Villagers (3); Student Control (3,4); Rationing (4); Victory Corps (3)



ROBERT L. DREIER

A Cappella Choir (2); Boys' Junior Glee (1); Boys' Senior Glee (1); Boys' Bowling League (3); Camera Club (2); Homeroom Representative (2,3); Roller Skating Club (1,2); Speakers' Bureau (1); Student Control (2,3)

CLAIRE ELIZABETH DUDLEY

A Cappella Choir (3); Music Festival (2); Girls' Junior Glee (2); Girls' Senior Glee (2); Junior Honor Society (1); Latin Club (2,3); G.A.A. (1)



JAMES CARLTON EDICK

ROTC (1,2); Scrap Drive (3)

TESSIE ORLEVIA EDWARDS

Girl Reserves (2,4); G.A.A. (1); Spanish Club (4); Student Control (3,4); Victory Corps (3)



ELAINE ELLIS

All-Girls' Party (3); Central Colleens (3); G.A.A. (1,2); Girls' Junior Glee (1); Girls' Senior Glee (4); Music Festival (1); Student Control (2,3,4); Tennis (1); Rationing (3)

ELEANOR EYRE

Central Colleens (2,3); Central High Players (3); Debate Squad (3); Latin Club (1,2); Lininger Travel Club (1,2,3,4); Register Staff (4); Copy Reader (4); Exchange Editor (4); Rationing (3); Spanish Club (4); Student Control (1,2,3,4)



CARL S. FALCONE

Orchestra (1,2); ROTC Band (1,2); Road Show (1); Football (2)

DARWIN FALLIS

Bowling (1,2,3,4); ROTC (1,2,3,4); Sergeant (4); Student Control (4); Usher (1,2,3,4); Victory Corps (3); Pan-American Club (3); N.C.O.C. (4)



GAY FARBER

Central Colleens (1,2); Girls' Riflery (1); Latin Club (1,2); Lininger Travel Club (1,2,4); Student Control (1); Pep Squad (4); Scrap Drive (3); Riding Club (2); Road Show (4); Student Control (1,2); All-Girls' Party (4)

LELAND ERWIN FERER

National Honor Society

Chess Club (2,3,4); Secretary (4); Debate Squad (2,3,4); Debate Team (3,4); Discussion Club (1,2,3,4); Secretary (3); President (4); French Club (2); Forensic Society (2,3,4); Mathematics Society (1,4); O-Book Staff (4); Register Staff (4); Associate Sports Editor (4); Stamp Club (1,2,3); Junior Honor Society (1)

ELIZABETH ANN FERGUSON

Opera (4); A Cappella Choir (4); Roller Skating Club (4); Treasurer (4); Road Show (4)



VALORA JEAN FIDDOCK

National Honor Society

Winner of Baby Beautiful Contest (4); Junior Honor Society (1,2,3); Latin Club (2,3); Linger Travel Club (1,2,3,4); Central Colleens (4); Greenwich Villagers (3); Student Control (3); Road Show (1,4); Register Staff, Reporter (4)

ERNEST FLECKY

EDWARD R. FLETCHER

Football (1,4); Boys' Junior Glee (1); Boys' Junior Band (1); Boys' Senior Glee (2); ROTC Band (2,3); Road Show (2,3); Spring Festival (2,3); Concert Band (2); Choir (3,4); Student Control (3)



RICHARD JAMES FLYNN

ROTC (1,2,3,4); Silent Platoon (3); Military Police (2); Stage Crew (1); Bowling (3); Hi-Y (1,3); President (3); Homeroom Representative (2); Pan-American Club (2); Victory Corps (2); Spanish Club (3); Senior Play (3); Student Control (2)



JEANNE LA VONNE FOGEL

All-Girls' Party (2); Central Colleens (1,2,3); Central High Players (1,2,3); French Club (2,3,4); Treasurer (4); Girls' Junior Glee (1); Junior Honor Society (1,2,3); Music Festival (1); Register Staff (3,4); Solicitor (3); Advertising Manager (4); Scrap Drive (3); Student Control (2)

MARIE ROSE FRANCO

Homeroom Representative (3); Baseball (1); Basketball (1,2); Volley Ball (1,2); G.A.A. (1); Girl Reserves (1,2,3); Roller Skating Club (1); Spanish Club (1); Student Control (3)



CHARLES A. FREDKIN

A Cappella Choir (3); Boys' Junior Glee (1,2); Music Festival (1,2); Road Show (1,2); Roller Skating Club (1,2); ROTC (1,2); Corporal (1,2)

ROY E. FREDERICKSEN

National Honor Society

Art Contest (2,3); Chess Club (3,4); Junior Honor Society (2,3); Latin Awards (2,3); Latin Club (2,3,4); Rationing (4)



PHYLLIS FREED

Junior Honor Society (3); All-Girls' Party (3); Central Colleens (2,3); Linger Travel Club (1,2,3,4); Spanish Club (2,3,4); Roller Skating Club (2); Pan-American Club (3); Girls' Riflery Team (1); Knitting Club (1); Rationing (4)

JARVIS M. FREYMAN

National Honor Society

ROTC (1,2,3,4); Captain (4); N.C.O.C. (2,3); C.O.C. (4); Usher (2,3); Crack Squad (3); Military Fire Patrol (2,3,4); Air Raid Warden (3,4); Road Show (3,4); Spanish Club (3,4); Sergeant-at-Arms (4); Stamp Club (1,2,3); Latin Club (1,2); Bowling (2,3,4); President (4); Boys' Rifle Team (3,4); Victory Corps (3)



SARA JANE FROHARDT

A Cappella Choir (4); Music Festival (1,2,4); Girls' Junior Glee (1); Girls' Senior Glee (2,3); Central High Players (1); G.A.A. (1); Girl Reserves (3); Girls' Riflery (2); Homeroom Representative (2); Student Control (4); Roller Skating Club (2)

**MARY GALLAGHER**

All-Girls' Party (3); Central Colleens (3); Girl Reserves (3,4); Junior Honor Society (3); Lininger Travel Club (4); Pep Squad (4)

NORTON L. GARON

National Honor Society

Bowling (3,4); Homeroom Representative (2); Junior Honor Society (2,3); Latin Awards (2); Mathematics Society (2,3); O-Book Staff (4); Register Staff (3,4); Reporter (3,4); Make-Up Assistant (4); Stamp Club (1,2,3); President (3); Rationing (2); O-Book Circulation (2)

**NORMA JEAN GIBSON**

A Cappella Choir (1,2,3); Girls' Junior Glee (1,2); Girls' Senior Glee (1,2)

ESTHER R. GIFFORD

A Cappella Choir (4); Girls' Junior Glee (2); Girls' Senior Glee (2,3); Music Festival (2,3,4); All-Girls' Party (3,4); Air Raid Warden (3); Baseball (1); Latin Club (3); Student Control (3); Tennis (1); Volley Ball (1)

**HELEN PAULINE GILLESPIE**

Central Colleens (2,3,4); Central High Players (3); Girls' Riflery (1); Greenwich Villagers (3); Junior Honor Society (3); Lininger Travel Club (1,2,3,4); Road Show (2,3); Spanish Club (3,4); Student Control (3); Tennis (1); Senior Play Committee (4)

MILDRED ANNIS GILMORE

National Honor Society

A Cappella Choir (3); Girls' Senior Glee (2); Girls' Junior Glee (1); Music Festival (1,2,3); Opera (3); Central Colleens (2,3,4); Central High Players (4); Girls' Riflery (1,2); Homeroom Representative (3); Junior Honor Society (1,2,3); Latin Awards (2); Latin Club (2); Mathematics Society (3,4); Lininger Travel Club (1,2,3,4); Tennis (1,2); Team (3); Rationing (2,3); Student Control (2,3,4); Road Show (4); All-Girls' Party (4)

**PAUL L. GITLIN**

Register Staff (3,4); Circulation Manager (4); Air Raid Warden (3); Central High Players (2,3); Homeroom Representative (2); Junior Honor Society (1); Latin Club (2,3); Military Fire Patrol (3); Military Police (2,3); O-Book Staff, Circulation Assistant (4); Press Club (3); Road Show (3,4); Road Show Advertising (4); Roller Skating Club (1); ROTC (1,2,3,4); Second Lieutenant (4); Silent Platoon (3,4); Stamp Club (2,3); Student Control (2,3); Rationing (3); N.C.O.C. (3,4); Scrap Drive (3); C.O.C. (4); Senior Committee

A. ELAINE GLISSMAN**PEGGY ROSE GOFF**

Girls' Junior Glee (4); Student Control (4)

SARAH GOLDEN

Girls' Junior Glee (4)

**JEANNE CAROLYN GOODE**

All-Girls' Party (2); Girl Reserves (1,2,3,4); G.A.A. (4)

DORIS M. GORDON

G.A.A. (1,2); Girls' Riflery (1,2); Junior Honor Society (1,3); Latin Club (3); Lininger Travel Club (2,3,4); Student Control (2,3,4); Volley Ball (1); Rationing (2,3)

DON GORMAN

Stage Craft (1,2,3,4); Wrestling (1,2,3,4); Basketball (1); Football (1,2,3,4); Baseball (1,2); Track (2,3,4); O-Club (2,3,4); Student Control (3,4); Victory Corps (3)

FRANCES GRASSO

G.A.A. (1); Girls' Junior Glee (2); Music Festival (2); Orchestra (1); Student Control (3)

WALTER T. GRAVES

ROTC (1,2,3,4), Captain (4); Military Police (2,3); Silent Platoon (3); Military Fire Patrol (2,3,4); ROTC Band (1); Air Raid Warden (2,3,4); Basketball (1); Bowling (4); Intramural Sports (1); Road Show (1,3,4); Spanish Club (2,3); Track (1,2,3); Scrap Drive (3); Rationing (4); Organizer of Pep Squad (4); C.O.C. (4)

SHIRLEY B. GRAVETT

Girls' Junior Glee (1); Girl Reserves (3); Road Show (3); Roller Skating Club (1,2); Student Control (2); Rationing (3)

FRANK BRUCE GROBEE

Student Control (4)

GORDON GUILLAUME**JOE GURNON**

Orchestra (2); Student Control (1)

ELIZABETH HAASE

Girls' Senior Glee (4); Central High Players (4); Road Show (4); Senior Play (4)

JIM B. HAINES

ROTC Band (2); Junior Band (1); Basketball (1); Football (1); Road Show (2,3,4); Roller Skating Club (4); Scrap Drive (3)

WILLIAM T. HALBROOK

ROTC Band (1,2,3,4), Second in Command (4); Music Contest (3,4); Music Festival (3); Orchestra (2,3,4); ROTC (1,2,3,4), First Lieutenant (4); N.C.O.C. (2,3); C.O.C. (4); Road Show (1,2,3,4); Latin Club (2); Air Raid Warden (3,4); Military Fire Patrol (4); Dance Band (3,4)

NADINE RUTH HALE

Girls' Junior Glee (1); Girls' Senior Glee (2); Music Festival (1); Senior Homeroom Officer, Sergeant-at-Arms (4); Student Control (2,3); Rationing (3); Scrap Drive (3); Pep Squad (4); All-Girls' Party (1,2); Central Colleens (2); Junior Honor Society (1); Lininger Travel Club (1,2); Road Show (4)

GLADYS HANNA

All-Girls' Party (3,4); Girls' Junior Glee (1); Girls' Senior Glee (1); Road Show (1); Girl Reserves (3); Student Control (1); Titians (3); Roller Skating Club (2)



**DOROTHY ARLENE HANSON**

A Cappella Choir (3,4); Girls' Junior Glee (2); Girls' Senior Glee (2); Music Festival (2,3); Opera (3); Road Show (3); Bowling (1); G.A.A. (1); Junior Honor Society (2,3); Latin Club (2); Rationing (2)

JAMES LEWIS HARRIS

ROTC (1,2,3,4); First Lieutenant (4); Military Police (1); Silent Platoon (3); N.C.O.C. (3); C.O.C. (4); Military Fire Patrol (3,4); Air Raid Warden (3,4); O-Club (1,2,3,4); Debate Team (1); Orchestra (3,4); Senior Homeroom Officer (4); Tennis (1,2,3,4); Captain (3,4); All-City (3,4); Junior Honor Society (1,2); Road Show (4); State Singles Champion, Tennis (4)

SHELDON JAMES HARRIS

Register Staff (4); Make-up Assistant, Reporter (4); O-Book Staff (4); Promotion (4); O-Book Circulation (4); ROTC (1,2,3,4); Technical Sergeant (4); Silent Platoon (4); N.C.O.C. (4); Stamp Club (3); Vice President (3); Homeroom Representative (3,4); Mathematics Society (3); Junior Honor Society (2); Latin Club (2); Central High Players (3); Boys' Bowling (4); Beginners' Band (1); Rationing (3); Scrap Drive (3); Victory Corps (3); S. A. Ticket Salesman (4); Student Control (3); Senior Play Publicity (4); Senior Committee (4)

NORMA ALICE HAUPT

A Cappella Choir (3,4); Bowling (1); Central Colleens (2,3); G.A.A. (1); Girls' Junior Glee (1); Girls' Senior Glee (2); Junior Honor Society (1,2); Latin Club (2,3); Lininger Travel Club (2,3,4); Roller Skating Club (1,2); Student Control (1,2,3); Rationing (3); Opera (3); Music Festival (1,2,3)

**DOROTHY DEE HEATH**

Junior Honor Society (1,2,3); Central Colleens (2,3,4); Sergeant-at-Arms (4); Central High Players (3,4); Girls' Junior Glee (2); Girls' Senior Glee (3); Lininger Travel Club (4); Latin Club (2); Music Festival (3); Road Show Advertising (3); Senior Play (3); Student Control (4); Fall Play Advertising (3); All-Girls' Party (4); Senior Play (4); Senior Committee, Chairman (4)

GLORIA JEAN HELLER

Commercial Awards (2)

**BETTE ANNE HENDERSON**

Central Colleens (1); Central High Players (2); Lininger Travel Club (3); Spanish Club (3,4); Rationing (3)

MARILYN M. HENDERSON

National Honor Society

Senior Art (4); Art Contest (4); Central High Players (2,3,4); Central High Players' Plays (4); Central Committee (4); National Thespians (4); Central Colleens (2,3,4); Girls' Junior Glee (2); Girls' Riflery (1,2); Homeroom Representative (4); Junior Honor Society (2,3); Junior Red Cross (2,3,4); President (4); Lininger Travel Club (1); O-Book Staff (4); Roller Skating Club (1); Victory Corps (3); Rationing (2,3,4); Road Show (4); Senior Play (4); Senior Committee (4)

**AUDREY NOREEN HENDRICKSON**

Music Festival (2); Girls' Senior Glee (2); Girls' Junior Glee (2); Girls' Riflery (2); Latin Club (2); Spanish Club (4); Central Colleens (4); Lininger Travel Club (2); Roller Skating Club (3,4); Bowling (1)

LEONARD F. HERDZINA

ROTC (1,2,3,4); Staff Sergeant (4); Student Control (3,4); N.C.O.C. (3,4)

**RICHARD WALTER HERRMANN**

National Honor Society

Mathematics Society (4); Road Show (4); Senior Homeroom Officer, Sergeant-at-Arms (4); Mathematics Award (4)

LOWELL HERTZBERG

ROTC Band (1,2,3); ROTC (1,2,3); Private (3); Junior Honor Society (1,2,3); Mathematics Society (2,3,4); Road Show (1,2,3); Student Control (3,4); Rationing (2,3); Usher (2)



RUTH HLADIK

SALLY ELLEN HOLMAN

Opera (4); A Cappella Choir (3,4); Girls' Junior Glee (1); Girls' Senior Glee (1,2); Music Festival (1,2,3); Latin Club (3); Lininger Travel Club (1,3); Student Control (2,3); Tennis (3); Pep Squad (4)



MARILYNN JUNE HOLMBERG

Roller Skating Club (4)

ALOIS HOLTS

A Cappella Choir (3,4); Boys' Junior Glee (2); Boys' Senior Glee (2,3)



BETTY LOU HOPKINS

National Honor Society

All-Girls' Party (4); Girls' Junior Glee (1); Homeroom Representative (3); Road Show (4); Titians (1,2,3,4); Lininger Travel Club (3); Student Control (1,2,4); Pep Squad (4); Victory Corps (3); Student Council (2,3); Spanish Club (4)



GEORGE FORGAN HOPKINS

Chess Club (4); Discussion Club (4), Secretary (4); Junior Honor Society (1,2,3); Latin Club (3); Mathematics Society (4); Stamp Club (3)

BEVERLY A. HORNE

Central Colleens (2); Central High Players (1,3,4); Lininger Travel Club (1,2); Make-up (3); National Thespians (3,4); Spanish Club (4); Student Control (1,2,3,4); Rationing (2,3); Victory Corps (3); Fall Play (3,4)



ROBERT HORTON

C. VANCE HUBBARD

ROTC (2,3,4), Second Lieutenant (4); C.O.C. (4); N.C.O.C. (3,4); Air Raid Warden (3); Register Staff (4); Reporter (4); Chess Club (4); Debate Squad (4); Discussion Club (2,3,4); President (4)



MAY LEE HUEI

Central Colleens (2); Central High Players (3); G.A.A. (1,2); Spanish Club (2,3); Student Control (3)

LEE HUFF

Opera (2,3); Music Festival (1,2,3); A Cappella Choir (2,3,4); Boys' Senior Glee (1); Boys' Junior Glee (1); ROTC (1,2,3,4), Staff Sergeant (4); N.C.O.C. (3,4); Central High Players (2,3); Road Show (2,3); Homeroom Representative (1,2); Latin Club (2,3,4); Science Club (3); Student Council (1); Bowling (2)



CLEA MARIAN HUNTER

Central Colleens (4); Commercial Awards (4); G.A.A. (2,3); Girls' Junior Glee (1); Girls' Senior Glee (2); Girl Reserves (3,4); Secretary (4); Junior Honor Society (2,3); Lininger Travel Club (4); Music Festival (1,2); Student Control (4)

**B. LOUISE HUNTER**

G.A.A. (1,2,3,4); Titians (1,2,3,4); Girl Reserves (2,4); Girls' Junior Glee (1); Student Control (1,2,3,4); Senior Play (4)

JAMES B. HURD

Athletic Manager, Football (3,4); Intramural Sports (4); Basketball (1,2); Baseball (1); Bowling (2); Track (1); Roller Skating Club (2); Stage Crew (1,2,3); Student Control (4); Scrap Drive (3)

**SYLVIA JUNE HURWICH**

Central Colleens (2,3,4); Lininger Travel Club (3); Roller Skating Club (1,2); Spanish Club (2,3,4); Homeroom Representative (3); Victory Corps (3); Student Control (3,4)

JAMES WALKER INGRAHAM

A Cappella Choir (2,3); Boys' Junior Glee (1); Boys' Senior Glee (1); Male Quartet (2,3); Music Contest (2); Music Festival (1,2,3); Opera (2,3); Road Show (2,3); Bowling (3,4); Chess (1); Football (1,2); Homeroom Representative (2); Junior Honor Society (2); Latin Club (2); Mathematics Society (2,4); Student Control (3); Victory Corps (3); Scrap Drive (3)

**NOREEN J. ISAAK**

Central Colleens (3,4); Lininger Travel Club (4); Spanish Club (2); Student Control (2,3); Scrap Drive (3); Victory Corps (3)

RUTH LOIS JACKMAN

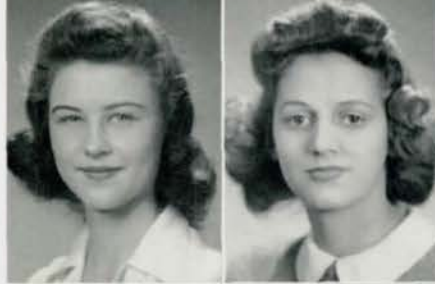
Girls' Senior Glee (2,4); Music Festival (2,4); Rationing Board (4)

**JOAN JACOBSEN**

Junior Honor Society (1,2); Girls' Junior Glee (1); Girls' Senior Glee (1); Music Festival (1); Register Staff (4); Proof-Reader (4); O-Book Staff (4); Red Cross Knitting (2); Lininger Travel Club (2,3); Central Colleens (2,3); French Club (1,2,3); Student Control (2,3,4); Senior Committee (4)

CHARLES DAVID JAMES

Air Raid Warden (4); Baseball (3,4); Bowling (4); Football (1,2,3,4); Intramural Sports (1,2); Latin Club (2,3); Military Fire Patrol (4); Military Police (2,3); O-Book Staff (4); O-Club (3,4); Register Staff (3,4); Assistant Sports Editor (4); ROTC (1,2,3,4); Technical Sergeant (4); Student Control (1,2,3); Wrestling (1,2); Usher (2,3); N.C.O.C. (3,4); Scrap Drive (3)

**LORETTA ANN JAMESON**

Opera (4); Music Festival (1,2,3,4); A Cappella Choir (3,4); Girls Senior Glee (2); Girls' Junior Glee (1); Central High Players (1,2,3,4); Senior Play Property (3); Road Show (3,4); Central Colleens (2,3,4); Lininger Travel Club (1,2,3,4); Latin Club (3); Student Control (2,3,4); Victory Corps (3,4); Rationing (3); Pep Squad (4); All-Girls' Party (4)

MARION JENSEN

Central Colleens (2); Girls' Junior Glee (1); Girls' Senior Glee (2); Music Festival (2); Roller Skating Club (1,2); Sergeant-at-Arms (2); Student Control (2,3,4); Rationing (3)

**DORA A. JOHANSEN**

Girls' Junior Glee (1); Girl Reserves (1); Lininger Travel Club (1); Music Festival (1)

ARLENE JOHNSON

A Cappella Choir (2,3,4); Basketball (1); Baseball (1); Central Colleens (1,2,3,4); Class Officer (1); Sergeant-at-Arms; G.A.A. (1); Girls' Junior Glee (1); Girls' Senior Glee (1); Girls' Rifflery (1); Intramural Sports (1); Student Control (1,2,3); Lininger Travel Club (1,2,3,4); Music Festival (1,2,3); Roller Skating Club (1); Road Show (4); Spanish Club (3); Stamp Club (1,2); Titians (1,2,3,4); Volley Ball (1); Rationing (2,3); Opera (2,3,4); Victory Corps (3); Fall Play Advertising (4)

GLORIA FAYE JOHNSON

Band (1,2,3); President (1); Music Festival (2); Central High Players (3); Basketball (3); G.A.A. (1); Girls' Senior Glee (2,3); Intramural Sports (1); Volley Ball (1,2,3)

DORIS JACQUELINE JOHNSON

A Cappella Choir (2); Girls' Junior Glee (1); Girls' Senior Glee (1); Music Festival (4)

MARILYN LOIS JOHNSON

National Honor Society

Junior Honor Society (1,2); Air Raid Warden (2); All-Girls' Party (3); Central Colleens (2,3); Homeroom Representative (3); Junior Red Cross (3); Latin Club (2); Lininger Travel Club (1,2,3,4); Register Staff (4); Reporter (4); Roller Skating Club (2,3); Student Control (2,3); Student Council (3); Rationing (2,3); Victory Corps (3); O-Book Circulation (3)

K. SONIA JOHNSON

Art Contest (4); Junior Red Cross (3); O-Book Staff (4); Senior Art (4); Student Control (2)

JULIUS J. JORGENSEN, JR.

Military Police (2,3,4); ROTC (1,2,3,4); Second Lieutenant (4); C.O.C. (4); N.C.O.C. (3); Air Raid Warden (4); Art Contest (1,2); Bowling (4); Homeroom Representative (1); Roller Skating Club (3,4); Vice President (3); President (4); Rationing (4); Victory Corps (3)

DALE W. KADAVY

A Cappella Choir (3); Boys' Junior Glee (1); Boys' Senior Glee (1); Military Police (2); Music Contest (3); Music Festival (1,3); Road Show (3); ROTC (1,2); Student Control (3); Opera (3)

MARION KELLER

National Honor Society

A Cappella Choir (2,3,4); Girls' Junior Glee (1); Girls' Senior Glee (2); Music Festival (1,2); District Music Contest (3,4); Opera (3,4); Quartette (3,4); All-Girls' Party (1,2,3); Central Colleens (4); Central High Players (2,3,4); Vice President (3); Fall Play, Advertising (2,3,4); Ticket Manager (3); Student Director (4); French Club (4); G.A.A. (1); Homeroom Representative (3); Junior Honor Society (1,2,3); Junior Red Cross (2,3); Vice President (3); Lininger Travel Club (1,2); National Thespians (4); Register (3,4); Road Show (3,4)

JANNE ADELE KETZLER

Central Colleens (3,4); Central High Players (3); Pep Squad (4); Homeroom Representative (3); Lininger Travel Club (3,4); Roller Skating Club (1); Spanish Club (2,3); Scrap Drive (3); Student Control (4)

GLENNIS GLORIA KIMERLE

Girls' Senior Glee (2); Girls' Junior Glee (1); Music Festival (1); Register Staff (4); Advertising (4); Reporter (4); O-Book Staff (4); Central Colleens (2,3,4); Committee Chairman (4); Central High Players (4); Lininger Travel Club (4); Spanish Club (1,2); Student Control (1,4); Tutor (1); G.A.A. (1); Roller Skating Club (1); Victory Corps (3); All-Girls' Party (3,4)

MARIE ANN KOLACNY

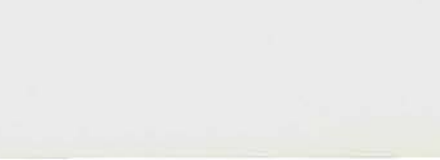
A Cappella Choir (4); Girls' Junior Glee (1); Girls' Senior Glee (1,2); Music Festival (1); Orchestra (1,2); Girl Reserves (3,4)

ROBERT E. KOLL

Junior Honor Society (2,3)

JAMES M. KOLL

Chess Club (4); Homeroom Representative (3); Mathematics Society (4); ROTC (1,2,3,4); Staff Sergeant (4)



**JAMES W. KOLL**

A Cappella Choir (3,4); Boys' Senior Glee (2); Boys' Junior Glee (2); Road Show (2,3,4); Student Control (2,3); Roller Skating Club (2,3,4); Bowling (4)

DOROTHY M. KOLLE

Commercial Awards (3,4)

**RICHARD T. KOORY**

French Club (4); Latin Club (2); ROTC (1,2,3,4), Sergeant (4); Freshman Drill Sergeant (1); N.C.O.C. (4)

PHYLLIS JEAN KORISKO

National Honor Society

A Cappella Choir (3,4); Music Festival (1,2,3,4); Girls' Senior Glee (1); Girls' Junior Glee (1); Junior Honor Society (2); Road Show (3); All-Girls' Party (2,3); Girl Reserves (1,2,3,4); Central Colleens (2,3,4); G.A.A. (1,4); Central High Players (3,4); Latin Club (3); Mathematics Society (4); Student Control (2,3), Chairman (3)

**DON KREMARIK****BETTY M. KULHANEK**

Junior Honor Society (3); Homeroom Representative (4); Latin Club (1,2); Junior Red Cross (4); Lininger Travel Club (1,2,3,4); G.A.A. (1); Central Colleens (2,3,4); Road Show (4); Roller Skating Club (1); Spanish Club (3,4); Tennis (4); Rationing Board (3); Scrap Drive (3); Victory Corps (3); All-Girls' Party (4)

**EUGENE KUNKEL**

ROTC (2); Junior Band (2)

MARY HELEN KUPPINGER

Baseball (1); Basketball (1); Volley Ball (1); Riding Club (2); Girls' Riflery (2); Central Colleens (3,4); Central High Players (4); Music Festival (2,3); Girls' Junior Glee (1,2,3); Girls' Senior Glee (3); Student Control (2,4)

**DELORIS LAHR**

National Honor Society

Junior Honor Society (1,2,3); Central High Players (2,3,4); National Thespians (3,4); Mathematics Society (3,4), Sergeant-at-Arms (4); Central Colleens (2,3,4); Lininger Travel Club (1,2,3); Student Control (3,4); Tennis (3,4); Victory Corps (3)

WILLIAM BANKS LATENSER

ROTC (1,2); Boys' Junior Glee (1); Boys' Senior Glee (1); Music Festival (1); Choir (2); Cheer Leader (2); Football (1); Camera Club (1)

**W. ROBERT LAURITSEN**

Basketball (1,2,3); Football (1,2,3,4); Homeroom Representative (1,2); Intramural Sports (1,2,3,4); National Art Society (2,3); O-Club (2,3,4); Road Show (3); Roller Skating Club (1,2); ROTC (1); Speakers' Bureau (1,2); Stage Crew (2,3); Student Control (4); Track (1,3,4)

HARRY G. LEFFLER

National Honor Society

Junior Honor Society (1,2,3); Mathematics Society (2,3,4), President (4); Discussion Club (4); Vice President (4); Chess Club (4); Latin Awards (2,3); Homeroom Representative (2); Football (2); Spanish Club (4); Science Award (4)

BETTY LEFKOWITZ

Central Colleens (2,3); Central High Players (2,3,4); Roller Skating Club (1); Spanish Club (3,4); Road Show (4); Senior Play (4)

HENRY J. LEFLER

ROTC (1,2,3,4); Staff Sergeant (4); N.C.O.C. (3,4); Intramural Sports (2); Latin Club (1,2); Student Control (2)

BETTY FRANCES LEGGE

National Honor Society

Opera (2,4), Lead (4); A Cappella Choir (2,3,4); All-Girls' Party (2,3); Junior Honor Society (1,2,3); Road Show (2,3,4); National Thespians (4); Music Festival (1,2,3,4); Music Contest (3,4); Student Council (2,3); Student Council Convention (2); Lininger Travel Club (1,2,3); Latin Club (3,4); French Club (4); Central High Players (4); Central Colleens (2,3,4)

HELEN JEAN LEIBEN

Opera (1,2,4); A Cappella Choir (2); Girls' Junior Glee (1); Girls' Senior Glee (1); Music Festival (1,2); Concert Band (1); Senior Orchestra (1,2,4); G.A.A. (1,2,3); Girl Reserves (1,2,3); Central Colleens (2); Athletic Awards (3); Badminton (2); Victory Corps (3)

JOHN B. LEPINSKI

Air Raid Warden (2,3,4); Bowling (4); ROTC (1,2,3,4), Major (4); C.O.C. (4); Vice President (4); N.C.O.C. (3); Treasurer (3); Ushers (2,3); Military Fire Patrol (2,3,4); Crack Squad (3); Homeroom Representative (4); Senior Homeroom Vice President (4); Road Show (3,4); Ticket Manager (4); Military Police (2)

SHIRLEY ANNE LIERK

Honorary Lt. Colonel (4); A Cappella Choir (3,4); Girls' Junior Glee (1); Girls' Senior Glee (2); Music Festival (1,2,3,4); All-Girls' Party (3,4); O-Book Staff (4); Register Staff (4); Reporter (4); Central Colleens (2); Central High Players (4); Lininger Travel Club (1,2,3); Homeroom Representative (4); Road Show (1,4); Opera (3); Student Control (2,3,4); Pep Squad (4); Victory Corps (3); Scrap Drive (3); Senior Committee (4)

SHIRLEY JEAN LINCOLN

Homeroom Representative (2); Latin Club (2); Lininger Travel Club (1); Register Staff (4); Advertising (4); Spanish Club (3); Student Control (2,3,4)

DORIS LINDA

A Cappella Choir (3,4); Opera (2,3); Music Festival (1,2,3,4); Girls' Junior Glee (1); Girls' Senior Glee (2); Orchestra (1); Road Show (2,3); Central Colleens (2,3); Lininger Travel (2,3); Student Control (1,2,3,4)

JAMES M. LINKE**STANLEY LIPSEY**

ROTC (2,3,4), Sergeant (4); Usher (4); N.C.O.C. (3); Spanish Club (1,2,3); Student Control (2); Tennis (2); Bowling (2)

HARVEY LIPSMAN**MARIAN SALLY LIVINGSTON**

Central Colleens (3,4); Latin Club (3); Lininger Travel Club (3,4); Student Control (3)





ALICE M. LORIMER

Junior Honor Society (1); Homeroom Representative (2); Lininger Travel Club (2,3); Greenwich Villagers (2); Girl Reserves (1); Central Colleens (2); All-Girls' Party (1,2); Roller Skating Club (1)

BARBARA A. LOUCKS

National Honor Society

A Cappella Choir (4); Central High Players (3,4); Cheer Leaders (4); French Club (3); Girls' Senior Glee (3); Junior Honor Society (3); Student Control (3,4); Lininger Travel Club (3,4); Music Contest (3); Music Festival (3); Road Show (3,4); Spanish Club (3,4); Rationing (3); Opera (3)

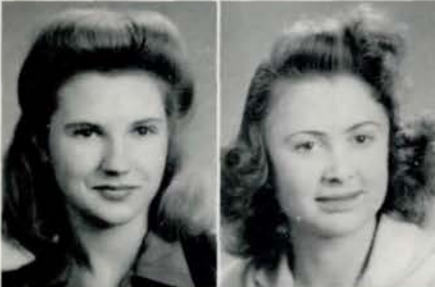


KATHRYN A. LOUKAS

Junior Honor Society (3); Girls' Senior Glee (1,2); Girls' Junior Glee (1); Music Festival (1,2); Senior Art (4); Art Contest (4); Central Colleens (3,4); Lininger Travel Club (3,4); Girl Reserves (1,2,3,4); Student Control (3,4); Roller Skating Club (4); Volley Ball (1)

MARILYN ANNE LOWE

Student Control (4); Girls' Junior Glee (1); Spanish Club (4); Road Show (4); All-Girls' Party (3,4)



MARY LUEDER

National Honor Society

Lininger Travel Club (1,2,3,4); Central Colleens (2,3,4); Junior Honor Society (1,2,3); Latin Club (1,2); Spanish Club (4); Art Contest (3); Road Show (1); Student Control (3); Rationing (4); Pep Squad (4); Girls' Riflery (1); All-Girls' Party (1,4); Countess (4)

BARBARA JEAN LUNDIN

Central Colleens (4); Spanish Club (2); Roller Skating Club (1); Student Control (2,3); Scrap Drive (3); Victory Corps (3)



JAMES C. LYLE

National Honor Society

Air Raid Warden (4); ROTC (1,2,3,4), Captain (4); N.C.O.C. (2,3); C.O.C. (4); Register Staff (4); Associate Sports Editor (4); O-Book Staff (4); Track (1); Basketball (1); Bowling (1,2,3,4); Treasurer (4); Junior Honor Society (2,3); Latin Club (2,3); O-Club (3,4); Spanish Club (3); Rationing (2); O-Book Salesman (3); Scrap Drive (3); Road Show (4); Tennis (3,4); City Doubles Champions (3); Missouri Valley Tennis Champion (4); State Doubles Champion (4)

MILTON FRED MACK

ROTC (1,2,3,4), First Lieutenant (4); N.C.O.C. (2,3); C.O.C. (4); Crack Squad (2,3); Road Show (2,3); Central High Players (4); Air Raid Warden (3,4); Military Fire Patrol (3,4); Spanish Club (2,3)



PATRICIA JEAN MAHAFFEY

Baseball (1,2,3,4); G.A.A. (1,2,3,4); Treasurer (2); President (3); Girls' Riflery (2,3); Office Clerk (2,3)

DAVID JOHN MAJORS

Choir (1,2,3); Basketball (1); Bowling (2,3); Homeroom Representative (1,2); State Music Contest (1,2,3,4); Regional Music Contest (1,2); Orchestra (1,2,3); Junior Honor Society (1)



JACQUELINE JEANETTE MALCOLM

All-Girls' Party (3); Latin Club (1); Girl Reserves (1,2)

KENNETH H. MALLINSON

ROTC Band (1,2,3); French Club (1,2,3); Hockey Team (2); Road Show (1,2); Roller Skating Club (2,3); ROTC (1,2,3); Student Control (3); Track (1); Scrap Drive (3)

JOE MANCUSO

Athletic Awards (2,3,4); Baseball (2,3,4); Basketball (2,3,4); Football (1,4); Intramural Sports (1,2,3,4); O-Club (3,4); Boys' Junior Glee (1); Homeroom Representative (4); Stage Crew (1); Scrap Drive (3)

ELIO S. MANGIAMELI

National Honor Society

Junior Honor Society (1,2); Football (1,4)

**HAROLD M. MARER**

A Cappella Choir (2,3); Boys' Junior Glee (1); Boys Senior Glee (1); Central High Players (1,2,3); Central High Players' Plays (1,2,3); Football (1); Military Police (2); Music Festival (1,2,3); National Thespians (2,3); Road Show (1,2,3); Road Show Advertising (1,2); ROTC (1,2,3,4); Sergeant (4); Safety Patrol (1); Silent Platoon (3); Scrap Drive (3); Victory Corps (3); N.C.O.C. (3); Opera (1,2,3)

SILAS B. MARKESON

ROTC (1,2,3,4), Captain (4); Air Raid Warden (3,4); Crack Squad (3); Military Police (2,3); N.C.O.C. (3); C.O.C. (4); Treasurer (4); Victory Corps (3); O-Book Circulation (2); Rationing (3); Scrap Drive (3); Track (1,2,3,4); Road Show (3,4); O-Club (3,4); Latin Club (2); Junior Honor Society (2); Intramural Sports (1,2); Homeroom Representative (2,3); Football (1); Bowling (4); Basketball (1); Fire Warden (4)

**JEANNE MARKS**

Linger Travel Club (4); Central Colleens (4); G.A.A. (4); Central High Players (4)

ELVA MAE MARTIN

Girls' Junior Glee (4)

**MARGIE BERNICE MARTIN**

G.A.A. (1,2,3,4); Basketball (1,2,3,4); Baseball (1,2,3,4); Volley Ball (1,2,3,4); Homeroom Representative (2); Student Control (1,2,3,4); All-Girls' Party (1,2,3,4); Orchestra (1,2,3,4)

MARY LOU MARTIN

Class Officers (2,3), Vice President (2), Sergeant-at-Arms (3); All-Girls' Party (2); G.A.A. (1,2); Roller Skating Club (2,3), Treasurer (2); Spanish Club (2); Student Control (3,4)

**SAM A. MAXWELL**

National Honor Society

Homeroom Representative (3); Baseball (3); Football (1); Track (1); Wrestling (2); Mathematics Society (2,3,4)

JEAN K. McANDREWS

A Cappella Choir (3,4); Girls' Junior Glee (1); Girls' eSenior Glee (2); Music Festival (2,3,4)

**MARGARET JANE McCUMSEY**

Central Colleens (1,2,3,4); Linger Travel Club (1,2,3,4); Rationing (3,4); Spanish Club (3); Scrap Drive (2); Student Control (4)

PHYLLIS McFARLAND

Register Staff (4), Copy Girl (4); Girls' Junior Glee (1); Music Festival (1); Central Colleens (2,3,4); Central High Players (3,4); Girl Reserves (1); Junior Honor Society (3); Latin Club (2); Linger Travel Club (2,3); Roller Skating Club (1,2); Spanish Club (4); Student Control (2,3,4)





DONALD E. McGUIGAN
Mathematics Society (3)

ALICE R. McINTYRE

Central Colleens (3); Commercial Awards (3,4); Student Control (3,4); Volley Ball (3)



LAURITA Z. McLAIN

A Cappella Choir (4); Music Festival (3,4); Girls' Senior Glee (3); Girls' Junior Glee (2); Titians (2,3,4); Central Colleens (4); Lininger Travel Club (3,4); Latin Club (3); Spanish Club (4); Student Control (4)

RICHARD B. McMILLAN, JR.

O-Book Staff (3,4); Art Contest (3,4); Senior Art (3,4); Track (3,4); Bowling (1); Football (1)



FRED WALTON MERRILL, JR.

Road Show (3,4); Stage Crew (3,4); Booth Electrician (3,4); Stage Manager (4); Music Festival (3,4); Homeroom Representative (3)

MARILYN METCALFE

Central Colleens (3,4); Greenwich Villagers (2); Lininger Travel Club



LORE B. METZGER

Central High Players (3,4); Girls' Junior Glee (1); Central Colleens (4); Lininger Travel Club (3); Student Control (4)

MYRON HARRY MILDER

ROTC (2,3,4); Corporal (4); Air Raid Warden (4); Military Police (2); N.C.O.C. (4); Boys Bowling (2,3); Camera Club (1,2); Opera Publicity (4); Spanish Club (4); Stamp Club (3); Student Control (4); Victory Corps (3); Scrap Drive (3)



DEAN G. MILLER

Boys' Junior Glee (1); Boys' Senior Glee (1); French Club (2); Latin Club (1); Music Festival (1); Student Control (1)

ELAINE MOFFATT

Choir (3,4); Girls' Senior Glee (3); Music Contest (3); Music Festival (3,4); Girls' Octett (3,4); Student Control (3,4); Central Colleens (3)



GERALD MOKOFSKY

Spanish Club (1,2,3); Roller Skating Club (2,3); Air Raid Warden (3); Speakers Bureau (3); Stage Crew (3)

JEANICE L. MOORE

Central Colleens (3,4); Central High Players (3,4); G.A.A. (1,2,3); Girls' Junior Glee (1); Music Festival (1); Student Control (3)

BETTY JO MORGAN

Register Staff (4); Girls' Sports Editor (4); O-Book Staff (4); Central High Players (2,3,4); National Thespians (4); Speakers' Bureau (2); Orchestra (1); Girls' Junior Glee (1); Student Control (3,4)

ROBERT FRANCIS MORGAN

ROTC (1); Intramural Sports (4); Football (1); Baseball (3,4); Scrap Drive (3)

LETHA M. MORRILL

Girls' Junior Glee (1); Music Festival (1); Baseball (2,3,4); Basketball (1,2); Roller Skating Club (2); Volley Ball (4)

HAROLD MORTON MOZER

National Honor Society

Crack Squad (4); Military Fire Patrol (3); C.O.C. (4); N.C.O.C. (2,3); Victory Corps (3,4); Ushers (2); ROTC (1,2,3); Second Sergeant (4); Road Show (3); Silent Platoon (3); Spanish Club (1); Rationing (2,3,4); Mathematics Society (2,3,4); Junior Honor Society (1,2,3); Homeroom Representative (3); Air Raid Warden (3)

MARILYN MULHALL

Music Festival (2); Girls' Junior Glee (1,2); Homeroom Representative (1,2); All-Girls' Party (2,4); Countess (4); Lining Travel Club (4); Spanish Club (2); Student Control (2); Scrap Drive (3); Pep Squad (4); Road Show (4); Class Officer, Sergeant-at-Arms (3)

MARGARET L. MULLER

Junior Honor Society (2); Lining Travel Club (1,3,4); Mathematics Society (3,4); Sergeant-at-Arms (3); Secretary (4); Girls' Riflery (1); French Club (2,3); Central High Players (2,3,4); Titians (1,2,3,4); President (4); Student Control (1,2,3,4); Road Show (1); Rationing (3,4); Pep Squad (4); Victory Corps (3)

MARIA BARBARA MUNRO

Student Control (4); Rationing (4)

PATRICIA NAGGS

Lining Travel Club (3); Central Collens (3); Student Control (4); Victory Corps (3)

DARLENE M. NELSON

A Cappella Choir (2,3,4); Girls' Junior Glee (1); Opera (2,3); Road Show (2,3); Music Festival (1,2,3); G.A.A. (1); Homeroom Representative (4)

WALLACE SIGSBEE NELSON

A Cappella Choir (3,4); Boys' Senior Glee (3); Orchestra (3,4); Road Show (4); Football (3)

MILDRED MAE NEWTON

Junior Honor Society (2); Lining Travel Club (1,2,3,4); Student Control (1,2,3,4); Spanish Club (2); Roller Skating Club (2,3,4); Road Show (4); Titians (1,2,3,4)

PHYLLIS JEAN NICHOLSON

Junior Honor Society (1); Lining Travel Club (4); G.A.A. (1,2); All-Girls' Party (2); Roller Skating Club (2,4); Student Control (2,4); Knitting Club (2); Girls' Riflery (2)





THEODORE R. NIESS

ROTC (1,2,3,4); Second Lieutenant (4); Air Raid Warden (4); Bowling (4); Football (4); Homeroom Representative (3,4); Military Fire Patrol (4); Military Police (2,3); O-Club (2,3,4); Road Show (3); Silent Platoon (3); Stamp Club (1,2); Student Control (2,3,4); Track (1); Wrestling (2,3); Rationing (2); Pan-American Club (3); N.C.O.C. (3); C.O.C. (4); Ushers (2,3,4)

SALVATORE LUCIANO NIGRO

ROTC (3,4), Corporal (4)



ROSE MARIE NISI

Baseball (1); Basketball (1); Art Contest (3); Commercial Awards (3); Homeroom Representative (2); O-Book Staff (3); Volley Ball (1); Pan-American Club (3)

RUTH NORMAN

A Cappella Choir (4); G.A.A. (1,2); Girls' Senior Glee (2); Girls' Junior Glee (1); Girl Reserves (1,2,3,4); Music Festival (1,2,3); Spanish Club (4); Victory Corps (3); Road Show (4)



ALICE NYBERG

Intramural Sports (1,4); Roller Skating Club (4); Volley Ball (1); Table Tennis (4)

LORRAINE OCHSENBEIN

Girl Reserves (3); Student Control (2,3,4)



GRACE D. ODDO

Junior Honor Society (3); Homeroom Representative (3); G.A.A. (1); Girl Reserves (1,2); Student Control (4); Volley Ball (1); Pan-American Club (3); Victory Corps (3); Senior Play (4)

MARJORIE JEAN OGDEN

Intercity Red Cross Council (2,3,4); Junior Red Cross Council (2,3,4); Central Colleens (2,3,4); Lininger Travel Club (2,3,4); Orchestra (1); Pan-American Club (3); French Club (4); Student Control (2,3); Stamp Club (3); G.A.A. (1); Pep Squad (4); Victory Corps (3); Scrap Drive (3); Rationing (4)



MARY ROSE JEAN OLNEY

Girls' Junior Glee (2,3); Titans (1,2,3,4); G.A.A. (1,2); Girl Reserves (4); Student Control (2,3,4)

VIGGO B. OLSEN

National Honor Society

A Cappella Choir (2,3,4); Music Contest (1,2,3,4); Music Festival (3,4); Orchestra (1,2,3,4); Road Show (2,3,4); Opera (1,2,3,4); Basketball (1,2,3); Bowling (1,2,3,4); Hi-Y (1,2); Homeroom Representative (2); Junior Honor Society (3); Intramural Sports (1,2); Student Control (2); Rationing (4); Scrap Drive (3)



PHYLLIS A. ONTMAN

Girl Reserves (3,4); Student Control (2); Pep Squad (4)

FRANCES DARLENE PADRTA

G.A.A. (4); Girls' Junior Glee (4)

LEONARD A. PALETTO

O-Club (4); Athletic Manager (3); Baseball (4); Intramural Sports (2); Track (1); Stage Crew (2,3,4)

VERA FRANCIS PARILMAN

A Cappella Choir (3); Girls' Junior Glee (1); Girls' Senior Glee (1,2); Opera (3); Music Festival (1,2,3); Central Colleens (2); Greenwich Villagers (3); Student Control (2,4); Spanish Club (4); Victory Corps (3); Girl Reserves (2,3)

MARCIA BESS PARKER

Junior Honor Society (2); Commercial Awards (3); G.A.A. (1); Girls' Junior Glee (1); Music Festival (1); Student Control (2)

ROBERT E. PARSONS

ELEANOR B. PARSONS

Central Colleens (3,4); Central High Players (3,4); G.A.A. (2,3); Student Control (3)

CLITRON F. PARTRIDGE

Basketball (1); Football (2); Intramural Sports (2); Track (1); Stage Crew (2)

GEORGE V. PATTON

Track (3)

JOANNE MOSS PATTON

Central Colleens (4); Central High Players (4); Homeroom Representative (3); Latin Club (3); Linger Travel Club (3); Student Control (3); Victory Corps (3); Chairman (3); Rationing (4)

HAROLD A. PAULSEN JR.

National Honor Society

Football (1,2,3,4); Track (1,2,3,4); O-Club (2,3,4); Vice President (4); Junior Honor Society (1,2,3); Homeroom Representative (2); Road Show (4)

JOHN CHARLES PEDERSEN

A Cappella Choir (3); Boys' Junior Glee (2); Boys' Senior Glee (2); Music Festival (2); Opera (3); ROTC (1,2,3); Sergeant (3); N.C.O.C. (3); Basketball (1); Military Police (2); Spanish Club (1); Student Control (1); Track (1,2); Rationing (2); Scrap Drive (2)

BILLIE PEPPER

National Honor Society

Junior Honor Society (1,2,3); Homeroom Representative (4); Register Staff (4); Reporter (4); Mathematics Society (2); Linger Travel Club (2); Camera Club (1); Central Colleens (3); Spanish Club (1); Student Control (3,4); Scrap Drive (2)

HARRIET PERCIVAL

Basketball (2); Bowling (1); Central Colleens (3,4); G.A.A. (1,2); Girl Reserves (1,2,3,4); Girls' Riflery (2); Linger Travel Club (3,4); Student Control (1,2); Titans (1,2,3,4); Treasurer (4); Volley Ball (1,2); Girls' Softball (1,2); Victory Corps (3)



**J. RICHARD PETERS**

Baseball (1); Basketball (1,2); Bowling (1,2); Football (1,2); Golf (2); Intramural Sports (1,2,4); Track (1,2); Wrestling (1); Camera Club (1,2); Homeroom Representative (1,3); ROTC (1,2)

GLORIA PETERSEN

Central Colleens (2,3); G.A.A. (1,2); All-Girls' Party (3); Girls' Junior Glee (1); Girls' Senior Glee (3); Homeroom Representative (3); Lininger Travel Club (3); Music Festival (1); Spanish Club (2,3); Student Control (2,3,4); Tennis (1)

**CHARLES A. PETERSON**

Air Raid Warden (4); Bowling (4); Football (3,4); Military Fire Patrol (3,4); O-Club (4); ROTC (1,2,3,4); First Lieutenant (4); Spanish Club (2,3); C.O.C. (4); N.C.O.C. (3); Road Show (4)

ESTHER G. PETERSON

Student Control (4)

**HELEN PETROW**

Register Staff (4); Girls' Sports Writer (4); O-Book Staff (4); Roller Skating Club (1); Student Control (3); Lininger Travel Club (1,2); Latin Club (1); G.A.A. (1); Central Colleens (1,2)

RAYMOND E. PHARES

ROTC (1,2,3,4); Second Lieutenant (4); Military Police (2,3); Silent Platoon (3); Crack Squad (4); Usher (2); Air Raid Warden (3); Rationing (2,3); Road Show (3,4); Student Control (2,3); Football (2,3); Victory Corps (3); C.O.C. (4)

**AUSTIN PHELPS**

National Honor Society

Central High Players (4); Chess Club (3,4); Vice President (4); Debate Squad (4); Discussion Club (4); Junior Honor Society (3); Latin Awards (3,4); Mathematics Society (4); Rationing (2,3,4); Victory Corps (3,4); Student Control (3,4)

REUBEN GEORGE PIERCE

Football (3,4); Homeroom Representative (4); Latin Club (3)

**MARJORIE PIONTKOVSKY**

Music Festival (1); Girls' Junior Glee (1); Girl Reserves (2,3)

WILLIAM NORMAN PLOTKIN

Music Festival (1,2,3,4); A Cappella Choir (3,4); Boys' Junior Glee (1); Boys' Senior Glee (2); Opera (3,4); ROTC (3); Usher (1); Central High Players (4); Junior Orchestra (2); Senior Orchestra (3,4)

**BARBARA A. POLICZ**

A Cappella Choir (4); Girls' Junior Glee (1); Girls' Senior Glee (2,3); Music Contest (1); Music Festival (1,2,3); Orchestra (1,2); Student Control (2,3); G.A.A. (1)

BETTY JEAN POOL

Central Colleens (3,4); Debate Team (2,3); Forensic Society (2,3,4); Girls' Junior Glee (1); Girls' Senior Glee (2); Lininger Travel Club (1,2,3,4); Music Festival (1); Spanish Club (2); Student Control (3,4); Tifians (3,4); Rationing (2,4); Pan-American Club, Sergeant-at-Arms (3); Victory Corps (3)

MURIEL PRICE

RAMON PRICE

JAMES WILLIAM PROTZMAN

National Honor Society

ROTC (1,2,3,4); Major (4); Air Raid Warden (3,4); Band (2); Bowling (2); Central High Players (3,4); Football (1,2,3); Mathematics Society (4); Military Fire Patrol (3,4); Music Festival (2,3); Orchestra (1,2,3); Road Show (1,2,3); N.C.O.C. (3); C.O.C. (4); Track (1); Rationing (3); Scrap Drive (3); Usher (2,3,4)

VIRGINIA LEE PURDHAM

National Honor Society

Junior Honor Society (1,2,3); A Cappella Choir (3); Girls' Junior Glee (1); Girls' Senior Glee (2); Music Festival (1,2); Opera (3); Class Officer (1,3); Sergeant-at-Arms (1,3); Spanish Club (4); Secretary (4); Register Staff (4); Reporter (4); Central Colleens (2,3,4); Latin Club (1,2); Lininger Travel Club (1,2,3,4); Rationing (3); Student Control (4)

CARL P. QUATTROCCHI

Music Festival (2); Boys' Junior Glee (2); Boys' Senior Glee (1); Wrestling (1,2,3,4); Football (2,3,4); Basketball (1)

EDYTHE ELEANOR RADINOWSKI

Girls' Junior Glee (1,2); Girls' Senior Glee (2); Central High Players (3,4); Lininger Travel Club (3,4); Pan-American Club (3); Victory Corps (3)

BEVERLY MARIE RAMER

National Honor Society

A Cappella Choir (3,4); Opera (3,4); Girls' Junior Glee (1); Girls' Senior Glee (2); Music Festival (1,2,3,4); Road Show (1,2,3,4); Junior Honor Society (1,2,3); Homeroom Representative (2,3); Student Control (3); Spanish Club (4); Lininger Travel Club (1,2,3,4); Central High Players (4); Central Colleens (2,3,4); All-Girls' Party (1); Senior Play (4); Pep Squad (4)

MARTHA ALICE RAMER

Junior Honor Society (2,3); Girls' Rifflery (2,3); Team (2); Fall Play Publicity (4); Central Colleens (3,4); Lininger Travel Club (2,3); Latin Club (2); Riding Club (2); Victory Corps (3); Student Control (4); Senior Play (4); O-Book Circulation (4)

AARON LEONARD RAZNICK

Boys' Junior Glee (1); Boys' Senior Glee (1); A Cappella Choir (2,3); Opera (2); Music Festival (1,2,3); Central High Players (1,2,4); Road Show (2); ROTC (1,2); Military Police (1,2); Bowling (1,2,3); Camera Club (1,2); Chess Club (1); Discussion Club (1,2,3); Football (1); Roller Skating Club (1); Spanish Club (1,2); Stamp Club (1,2,3); Wrestling (1); Scrap Drive (3); Victory Corps (3)

ALLEN RICHARD REINSCHREIBER

Central High Players (1,2,3,4); National Thespians (4); Road Show (2); ROTC (1,2,4); Corporal (4); N.C.O.C. (4); Spanish Club (1,2); Student Control (2,3); Usher (2); Senior Play (4)

JEAN M. RICHARDSON

A Cappella Choir (3,4); Girls' Junior Glee (1); Girls' Senior Glee (1,2); Music Festival (1,2,3,4); Opera (4); Central High Players (2,3)

FLOYDA MAE RILEY

Girls' Senior Glee (3)





BETTY JEAN RISS

A Cappella Choir (3,4); Music Festival (1,2,3,4); Girls' Junior Glee (1); Girls' Senior Glee (1,2); Opera (4); Road Show (3,4); Roller Skating Club (1,2); Spanish Club (2); Central Colleens (2,4); Central High Players (4); Lininger Travel Club (2,4); Homeroom Representative (3); Student Control (4)

PATRICIA ROESSIG

National Honor Society

Opera (3,4); A Cappella Choir (3,4); Music Festival (1,3,4); Girls' Junior Glee (1); Register Staff (3,4); Reporter (3,4); Junior Honor Society (1,2); All-Girls' Party (3); Central Colleens (3,4); G.A.A. (1,2); Lininger Travel Club (3); Spanish Club (2,3,4); Student Control (2,3,4); Tennis (1); Rationing (3)



EVELYN ROFFMAN

French Club (1); Greenwich Villagers (2,3); Lininger Travel Club (1,2); Roller Skating Club (1,2); Spanish Club (2,3); Student Control (3); Junior Red Cross (2); Pan-American Club (3); Victory Corps (3)

LOTTE H. ROSENBERG

Register Staff (4); Advertising (4); O-Book Staff (4); Central Colleens (4); Lininger Travel Club (4); Girl Reserves (2); Girls' Junior Glee (2); Student Control (3,4)



GERTRUDE E. ROSENBLATT

A Cappella Choir (3); Girls' Junior Glee (1); Girls' Senior Glee (2); Central Colleens (2,3,4); Central High Players (3,4); Debate Team (3); French Club (3); Latin Club (2); Lininger Travel Club (2,3); Intercity Red Cross Council (2,3,4); Student Control (2,3,4); Roller Skating Club (2); Girls' Riflery (2)

HUBERT I. ROSENBLUM

Athletic Awards (3); O-Club (3,4); Track (1,2,3,4); Missouri Valley Championship Relay (3); Intramural Sports (1,2); Bowling (3); Basketball (1); Roller Skating Club (1); ROTC (1,2,3,4); Staff Sergeant (4); Spanish Club (2); Student Control (2,3); Scrap Drive (3); Victory Corps (3); N.C.O.C. (4)



GWENDOLYN MARGARET ROWAN

Air Raid Warden (3); Central Colleens (1,2,3); Homeroom Representative (3); Junior Honor Society (3); Latin Club (1,2); Lininger Travel Club (1,2,3,4); Roller Skating Club (1,2,3); Student Control (1,2,3); Rationing (2,3); Victory Corps (3); Scrap Drive (3)

HOWARD S. RUBACK

ROTC (1,2,3,4); Sergeant (4); ROTC Band (2,3,4); Latin Club (2); Road Show (2,3,4); Spanish Club (3); Stage Crew (4); Student Control (2); Boys' Junior Glee (1)



MARY LOU RUBACK

Central Colleens (2,3,4); Girls' Junior Glee (1); Music Festival (1); Girls' Riflery (1); Junior Honor Society (3); Roller Skating Club (2); Spanish Club (1,2); Student Control (3,4); Pan-American Club (3); Victory Corps (3)

FRANCIS MARIE RUDOLFO

Central Colleens (2); Commercial Awards (4); Roller Skating Club (2,3,4); Student Control (2,3,4)



MARY SALANITRO

Music Festival (2); Girls' Junior Glee (1,2); Orchestra (1,2); Bowling (2)

WALTER S. SAMUELSON

Basketball (1,2,3,4); Football (1,2,3,4); Track (1,4); Scrap Drive (3)

DOROTHY SAND

A Cappella Choir (3,4); Girls' Junior Glee (2); Music Festival (1,2,3,4); Student Control (4); Tennis (1); Titians (1,2,3,4); Sergeant-at-Arms (4); Victory Corps (3)

CONSTANCE M. SAPIENZA

Baseball (1); Basketball (1); Girls' Riflery (1); Volley Ball (1); Student Control (2); Girls' Junior Glee (3)

PATRICIA J. SCHADE

Music Festival (3); Girls' Junior Glee (3); Central Colleens (4); Girl Reserves (4); Spanish Club (4); Student Control (2,4); Victory Corps (3)

DORIS SCHNEIDER

All-Girls' Party (1,2); Central Colleens (4); Central High Players (4); Girls' Junior Glee (1); Girls' Senior Glee (2,3); Girl Reserves (3,4); Make-Up (3,4); Lininger Travel Club (4); Basketball (1); Music Festival (1,2,3); Road Show (3); Rationing (3); Victory Corps (3,4); Badminton Team (1)

EVELYN MARIE SCHNEIDER

Central High Players (2,3); Girl Reserves (2,3,4); Spanish Club (2); Speakers' Bureau (3)

JACQUELINE SCHULTE

Girl Reserves (2); Central High Players (3,4); National Thespians (4); Student Control (3,4); Titians (3,4); Rationing (3,4)

EDNA LOIS SCHULTZ

Class Officer (3); Commercial Awards (2)

GLORIA RITA SEITENBACH

Student Council (1); Scrap Drive (3); Victory Corps (3)

THOMAS S. SHEA

Basketball (2,3,4); Football (4); Golf (2,3,4); O-Club (2,3,4); Intramural Sports (2,3); Music Festival (3); A Cappella Choir (3); Homeroom Representative (3); Road Show (4); Scrap Drive (3)

MERCEDES SHELLNBARGER

Junior Honor Society (3); Homeroom Representative (4); Girls' Junior Glee (1); Student Control (3,4); Road Show (4); Victory Corps (3); Pep Squad (4)

NANCY SHIPLEY

Central Colleens (4); Central High Players (4); G.A.A. (4); Lininger Travel Club (4); Roller Skating Club (4); Student Control (4); Road Show (4); Senior Play (4)

WANDA E. SHUPE

A Cappella Choir (3,4); Girls' Junior Glee (1,2); Girls' Senior Glee (2); Music Festival (1,2,3,4); Opera (3,4); Junior Honor Society (3); Latin Club (2); Lininger Travel Club (2,3); Homeroom Representative (3); Student Control (2,3); G.A.A. (1,2); Fall Play Properties (3)



**JUSTIN SIMON**

ROTC (1,2,3,4), Second Lieutenant (4); ROTC Band (3,4); Air Raid Warden (4); N.C.O.C. (3); C.O.C. (4); Orchestra (2,3); District Music Contest (3); Regional Music Contest (3); Basketball (1); Junior Honor Society (1); Music Festival (3); Scrap Drive (3)

CHARLES SLANGAL JR.

Bowling (1,2); Camera Club (1,2); Hi-Y (1,2); Motor Club (1,2); Roller Skating Club (2,3); ROTC (1,2); Student Control (2,3)

**BARBARA LEE SLATER**

A Cappella Choir (3,4); Central Colleens (1,3,4); Class Officer (2); Sergeant-at-Arms (2); Girls' Junior Glee (2); Girls' Senior Glee (2); Latin Club (2); Lininger Travel Club (2,3,4); Music Festival (2,3,4); Road Show (3); Roller Skating Club (1,2); Student Control (2,3,4)

JAMES P. SLATER II

Basketball Manager (3,4); Football (1,2,3); Hockey (1); Wrestling (1,2,3); ROTC (1,2,3,4); Sergeant (4); Roller Skating Club (4); O-Club (3,4); Air Raid Warden (3); All-Girls' Party (3); Scrap Drive (3); Ushers (3)

**WILMA JEAN SLAUGHTER**

Girls' Junior Glee (1,2); Spring Festival (2); Baseball (1)

BONITA JEAN SLIGER

A Cappella Choir (3,4); Music Festival (3); Opera (3,4); Girls' Senior Glee (2); Band (1); All-Girls' Party (2,3,4); Miss Central X (4); G.A.A. (2); Girl Reserves (2,3,4); President (4); Student Control (4)

**WILMA SMAILS**

A Cappella Choir (2,3,4); Central Colleens (2,3,4); Pep Squad (4); Class Officer (1); Treasurer (1); Girls' Junior Glee (1); Girls' Senior Glee (1); Junior Honor Society (1,3); Latin Club (2,3); Lininger Travel Club (1,2,3,4); Music Festival (1,2,3,4); Road Show (4); Student Control (3,4); Scrap Drive (3)

BETTY MAE SMITH**JANICE SMITH**

Lininger Travel Club (1,2,3,4); Latin Club (1,2); French Club (3,4); Central Colleens (2,3,4); Student Control (3,4); Homeroom Representative (3); Rationing (3); Pep Squad (4)

ROBERT EUGENE SMITH

National Honor Society

Basketball (1); ROTC (1,2,3,4); Staff Sergeant (4); N.C.O.C. (3,4); Chess Club (2,3,4); Homeroom Representative (3); Latin Club (2); Rationing (2)

**VERNON H. SMITH, JR.**

National Honor Society

Air Raid Warden (2,4); Basketball (1); Class Officer (3); President (3); Crack Squad (4); Football (4); Hi-Y (2); Junior Honor Society (1,2); Latin Club (4); Sergeant-at-Arms (4); O-Club (2,4); Road Show (4); ROTC (2,4); First Sergeant (4); Track (1,2,4); N.C.O.C. (4); Secretary (4)

CHARLOTTE SOMMER

A Cappella Choir (4); Central Colleens (3); French Club (1,2); Girls' Junior Glee (2); Girls' Senior Glee (3); Girls' Advanced Senior Glee (3); Girls' Rifery (2); Lininger Travel Club (3); Music Contest (3); Music Festival (2,3,4); O-Book Staff (4); Press Club (3); Register Staff (3,4); Reporter (3,4); Speakers' Bureau (2); Student Control (3)

SHIRLEY JEAN SORENSON

Central Colleens (1,2); Girls' Junior Glee (1); Homeroom Representative (2); Lininger Travel Club (1,2); O-Book Staff (4); Roller Skating Club (1,2,3); Spanish Club (2); Student Control (2,3,4)

JACK LEE SPENCE

Baseball (3,4); Chess Club (1); Football (4); Roller Skating Club (1); ROTC (1,2,3); Student Control (4); Track (1,2,3,4)

JO ANN SRB

A Cappella Choir (2,3,4); Concert Band (1); Central Colleens (3); Class Officer (3); Secretary (3); Girls' Junior Glee (1); Girls' Senior Glee (1); Girl Reserves (3); Homeroom Representative (1,3); Lininger Travel Club (3); Music Contest (2); Music Festival (1,2,3); Orchestra (1,2); Road Show (1,3,4); Student Control (1,3,4); Victory Corps (3); Pep Squad (4); Opera (1,2,3)

KENNETH LEE STARK

ROTC Band (4)

MARIAN STEIN

Central Colleens (2,3,4); Lininger Travel Club (3); Student Control (2); Victory Corp (3)

MARVIN H. STEIN

ROTC (1); Track (3,4); Wrestling (3)

ELEANOR LORETTA STEINBART

A Cappella Choir (4); Music Festival (1,2,3,4); Girls Junior Glee (1); Girls' Senior Glee (2,3); G.A.A. (1); Student Control (3,4)

LORRAINE STEINBERG

Central High Players (2,3); Central Colleens (2,3); Lininger Travel Club (2,3); Spanish Club (4); Commercial Awards (3,4); Girls' Rifery (2); Student Control (3,4); Road Show (4); Victory Corps (3)

DONALD L. STEVENS

ROTC (1,2,3); Private (4); Homeroom Representative (3); Student Control (3,4)

MARY LOU V. STEVENS

National Honor Society

Central High Players (3,4); National Thespians (4); Fall Play (4); Senior Homeroom Sergeant-at-Arms (4); Central Colleens (2,3,4); Treasurer (4); Class Officer (3); President (3); Homeroom Representative (2); Junior Honor Society (1,2,3); Lininger Travel Club (3,4); Orchestra (1,2); Roadshow (1,2,3,4); Spanish Club (4); Student Control (2,3,4); Pep Squad (4); Victory Corps (3,4); Senior Play (4); All-Girls' Party (3,4)

SUSAN ELIZABETH STORZ

A Cappella Choir (4); Girls' Senior Glee (3); Central High Players (3,4); Lininger Travel Club (3,4); Spanish Club (3,4); Student Control (3,4); Tennis (3); Pep Squad (4); Victory Corps (3)

MARTHA JO STREET

Junior Honor Society (1,2,3); Register Staff (3); Proofreader (3); Press Club (3); Girls' Junior Glee (1); Girls' Senior Glee (2); Chess Club (3); French Club (3,4); Girl Reserves (3); Lininger Travel Club (2); Student Control (3)





CLARK STRUTTON

PHYLLIS J. STUDNA

National Honor Society

Central Colleens (2,3); Central High Players (2); Junior Honor Society (2,3); Junior Red Cross (2); Latin Club (2,3); Lininger Travel Club (2,3); O-Book Staff (4); Advertising (3); Register Staff (3,4); Reporter (4); Student Control (2); Red Cross Knitting (2)



MARY ELIZABETH STUHT

National Honor Society

Student Council (3,4); Secretary (4); Senior Homeroom Treasurer (4); O-Book Staff (4); Lininger Travel Club (1,2,3,4); Latin Club (1,2,3); Junior Honor Society (1,2,3); Homeroom Representative (2,3,4); Colleens (2,3); All-Girls' Party (3,4); Rationing (4); Scrap Drive (3); Pep Squad (4); Red Cross (4); Victory Corps (3); Student Control (3,4)

RUTH EULALIA SULLIVAN

Orchestra (1,2,3); Music Contest (1); Girl Reserves (3); Homeroom Representative (3); Student Control (3)



ROSIE SVIK

JEANICE MARIE SWANSON

All-Girls' Party (4); French Club (2,3); Central Colleens (2); Spanish Club (1,2); O-Book Staff (4); Girls' Riflery (1,2); Greenwich Villagers (2); Lininger Travel Club (2); Victory Corps (3); Student Control (4); Roller Skating Club (3)



WALTER D. SWANSON, JR.

Junior Honor Society (2); Latin Club (3); O-Club (4); Wrestling (1); Football (1,2,3,4); Baseball (4)

SID SWARTZ

ROTC (1,2); Military Police (2); Boys' Junior Glee (1); Football (2); Wrestling (1); Homeroom Representative (1); Intramural Sports (1,2); Spanish Club (2); Speakers' Bureau (1); Student Control (2); Victory Corps (3)



EDWARD W. SWENSON

National Honor Society

ROTC (2,3,4); Lieutenant Colonel (4); Crack Squad (3); N.C.O.C. (2,3); C.O.C. (4); Boys' Rifle Team (2,3); Opera (4); A Cappella Choir (4); Orchestra (1,2); Music Contest (1,2); Junior Honor Society (1,2,3); National Thespians (4); Central High Players (2,3,4); Road Show (1,2,3,4); Student Council (3); Senior Homeroom Treasurer (4); Mathematics Society (4); Latin Club (2); Stamp Club (1,2,3); Usher (3); Military Fire Patrol (2,3,4); Scrap Drive (2); Bowling (4); Air Raid Warden (2,3,4); Fall Play (4)

SALLY SWILER

National Honor Society

Register Staff (4); Reporter (4); Central Colleens (2,4); Central High Players (3,4); Class Officer (1); Sergeant-at-Arms (1); Junior Honor Society (1,2); Latin Club (2,3); Lininger Travel Club (1,2,3,4); Student Control (3,4); Senior Committee (4); Rationing (3); Tennis (3,4); Pep Squad (4)



GRETCHEN ANN SWOBODA

National Honor Society

A Cappella Choir (4); Central Colleens (2,3,4); Central High Players (3,4); French Club (1,2,3,4); President (4); Girls' Junior Glee (1); Girls' Senior Glee (1,2); Junior Honor Society (2,3); Lininger Travel Club (1,2,3,4); Music Festival (1,2); Rationing (2,3); Scrap Drive (3); Road Show (4); Senior Committee (4); Student Control (3)

ROSEMARY LAURIE SYDOW

All-Girls' Party (1); Girls' Junior Glee (1); Girls' Senior Glee (1); Homeroom Representative (3); Music Festival (1); Student Control (3,4); Titians (1,2,3,4); Vice President (4); Victory Club (3,4)

DANIEL MILLS SYLVESTER

C.O.C. (4); N.C.O.C. (3); Usher (2,3,4); Commander (4); A. Capella Choir (4); Opera (4); Air Raid Warden (3,4); Basketball (1,3); Bowling (3,4); Central High Players (4); French Club (3,4); Vice President (4); Football (1); Homeroom Representative (1,3,4); Intramural Sports (1,4); Latin Club (2,3); Military Fire Patrol (3,4); Register Staff (4); Road Show (2,3,4); Student Control (2); Track (1,2); Rationing (3); Scrap Drive (3); Victory Corps (3)

FUMIAKI TAMAI

Baseball (3,4); Basketball (3); Football (3,4); Intramural Sports (4); O-Club (3,4); Junior Honor Society (3); Orchestra (1)

JERRY X. TAMISIEA

A Cappella Choir (4); Boys' Senior Glee (1,2); Music Contest (1,2); Marching Band (1,2); Class Officer (1); President (1); Hi-Y (1,2); Latin Club (1,2); Basketball (1,2)

EVELYN TEMIN

Baseball (3); G.A.A. (4); Volley Ball (3); Table Tennis (2,4)

BETTY JEANNE THOMAS

Baseball (2,3); Basketball (3,4); G.A.A. (1); Girl Reserves (1,2,3,4); Hockey (3); Student Control (2,3); Volley Ball (1,2)

CORNELIUS CAVE THOMAS

A Cappella Choir (1,2); Boys' Junior Glee (1); Boys' Senior Glee (1); French Club (3,4)

MARILYN JOY THOMPSON

Art Contest (2); Greenwich Villagers (1,2); Senior Art (4); Central High Players' Plays (2)

MARY MARGARET TOMES

Tennis (3); Basketball (3); Volley Ball (3); Student Control (4)

RALPH R. TOMPSETT

ROTC (1,2,3,4); Second Lieutenant (4); N.C.O.C. (3); C.O.C. (4); Military Fire Patrol (4); Military Police (2,3); Air Raid Warden (4); Boys' Rifle Team (2,3,4); Secretary (3); Treasurer (4); O-Club (4); Spanish Club (1); Speakers Bureau (3); Road Show (4)

MARGARET M. TREADWELL

National Honor Society

A Cappella Choir (2,3,4); Girls' Junior Glee (1); Girls' Senior Glee (1); Music Festival (1,2,3,4); All-Girls' Party (2); Central Colleens (3,4); Homeroom Representative (2); Junior Honor Society (1,2,3); Latin Club (2); Linger Travel Club (4); O-Book Circulation (2); Student Control (4); Rationing (3); Opera (2,3)

MERCEDES GLADYS TURNER

Baseball (1,2,3); Basketball (1,2,3); G.A.A. (4); Girl Reserves (4); Victory Corps (3)

ANNA LEE UPCHER

All Girls' Party (2); Junior Band (1); Baseball (1,2,3); Basketball (1,2,3); G.A.A. (1,3); Volley Ball (1,2,3); Ping Pong (2); Speakers Bureau (2); Girls' Junior Glee (2); Girl Reserves (1,2,3)



**ROSERY ANNE VACANTI**

Girls' Junior Glee (1,2); Girls' Senior Glee (2); Music Festival (1,2); Central Colleens (2); Central High Player (1); Roller Skating Club (2); Spanish Club (1); Student Control (2,4); Girl Reserves (3)

ROBERT A. VANHAUER

ROTC (1,2,3,4); Sergeant (4); Ushers (4); Homeroom Representative (4); Student Control (3,4); Student Council (4); Rationing (4); N.C.O.C. (3,4); Victory Corps (3,4)

**JOLINE VAN HORNE**

Student Control (4); Spanish Club (2,3,4); Road Show (4); Central High Players (3)

EDWARD VAN STEENBURG

Intramural Sports (2); Football (4); Band (2); Basketball (3,4); Chess Club (1,2,3,4); Orchestra (2); Roller Skating Club (1,2); ROTC (3); Spanish Club (3,4); Stage Crew (1); Stamp Club (1,2); Student Control (4); Track (3,4); Rationing (3); Scrap Drive (3)

**FRANCES VEITZER**

Bowling (1); Central Colleens (2,3); Junior Honor Society (1); Lininger Travel Club (2,3); O-Book Staff (4); Register Staff (3,4); Advertising (3); Advertising Manager (4); Road Show Advertising, Co-Chairman (4); Roller Skating Club (1,2); Spanish Club (2,3); Speakers' Bureau (2); Student Control (2,3); Victory Corps (3)

JESSIE JEAN VINCI

A Cappella Choir (4); Girls' Junior Glee (1); Girls' Senior Glee (2); Make-Up (2); Music Festival (1,2,3); Road Show (3,4); Student Control (2,3,4); Victory Corps (3); Pep-Squad (4)

**WILLIAM A. WALDIE**

ROTC (1,2,3,4); First Lieutenant (4); C.O.C. (4); N.C.O.C. (3,4); Military Fire Patrol (4); Boys Rifle Team (4); Air Raid Warden (4); Bowling (3,4); Homeroom Representative (2); Intramural Sports (1,4); Road Show (3,4); Roller Skating Club (2,3); Sergeant-at-Arms (3); Senior Homeroom Officer (4); Spanish Club (2,3); Student Control (2); Track (2); Scrap Drive (3); Ushers (2,3,4); Pep Squad (4); Co-Organizer (4); O-Book Circulation (4); Senior Committee (4); Victory Corps (3)

JOAN MARGOT WEBB

All-Girls' Party (1); Central High Players (3,4); National Thespians (4); Make-Up (3,4); Homeroom Representative (3); Latin Club (2); Lininger Travel Club (2); Press Club (4); Register Staff (4); Exchange Editor (4); Roller Skating Club (1,2,3); Student Control (2,3,4); Chairman (4); Fall Play (4); Senior Play Student Director (4)

**M. JANE WEINHARDT**

All-Girls' Party (2); Central Colleens (2,3,4); Secretary (4); Class Officer (2); Treasurer (2); Girl's Riflery (3); Homeroom Representative (1); Junior Honor Society (2,3); Latin Club (2); Lininger Travel Club (1,2,3); Senior Art (4); Spanish Club (3); Student Control (3,4); Fall Play Publicity (4); Riding Club (2); Rationing (3,4)

MIRIAM M. WEINSTEIN

Junior Honor Society (1); Latin Club (2); Lininger Travel Club (2,3,4); Spanish Club (4); Student Control (2,4)

**ROBERT WHITE WELLS**

A Cappella Choir (1,2,3,4); Boys' Junior Glee (1); Boys' Senior Glee (1); Football (1,2); Male Quartette (2,3); Music Contest, District (1,2,3); Regional (2); Music Festival (1,2,3); National Thespians (3,4); Road Show (1,2,3,4); Student Control (2,3); Operetta (1,2,3,4); Lead (2,3,4)

LOLA ARLENE WEST

A Cappella Choir (4); Junior Glee (1); Senior Glee (3); Roller Skating Club (1)

JACK L. WEST

Art Contest (2); Senior Art (4); Student Control (1); Track (3); Greenwich Villagers (1)

LAWRENCE EUGENE WHELAN

ROTC (1,2,3,4); Captain (4); Air Raid Warden (3,4); C.O.C. (4); N.C.O.C. (2,3); Military Fire Patrol (4); Central High Players (1,4); Football (1,2); Wrestling (1,2); Rationing (2); Fall Play (4)

WINIFRED F. WHITCHER

Lining Travel Club (4); Student Control (4); Pep Squad (4)

JACQUELINE M. WHITE

Central Colleens (2,3,4); Central High Players (2,3,4); Fall Play Publicity (3); Air Raid Warden (3); Lining Travel Club (1,3,4); Roller Skating Club (1); Senior Play Advertising (3); Spanish Club (4); Student Control (4); Pep Squad (4); Senior Play (4)

BETTY J. WILLIAMS

Baseball (2,3); Basketball (3,4); Volley Ball (2,3); Latin Club (3)

CHARLES WILLIAMS

Track (1); Wrestling (1); Homeroom Representative (4)

JACK WILLIAM WILLIAMS

ROTC (1,2,3,4); Private First Class (2,3,4); Crack Squad (3); Homeroom Representative (1,3); Discussion Club (3); Band (1)

MARY ANNA WILLIAMS

Girls' Junior Glee (1); Volley Ball (1); Art Contest (2)

ROBERT WINGENDER

RICHARD LEWIS WINTROUB

National Honor Society

ROTC (2,3,4); Staff Sergeant (4); Band (2,3,4); Junior Orchestra (2); Concert Orchestra (3); Chess Club (2,3,4); Treasurer (4); Chess Team (3); Junior Honor Society (2,3); Rationing (3); Victory Corps (3)

HERSHEL WOLFSON

Register Staff Photographer (4); French Club (4); Student Control (4)

ARLENE WOOTEN

G.A.A. (1,2,3,4)





DORIS YOUNG

Central High Players (3,4); Lininger Travel Club (1,2,3,4); Central Colleens (1,2,3,4); Girls' Riflery (1,2,3); Riding Club (2); Air Raid Warden (3); Student Control (3,4)

DOROTHY DALE YOUNG

A Capella Choir (3,4); Girls' Senior Glee (2); Girls' Junior Glee (1); Music Festival (1,2,3,4); Central Colleens (2); Lininger Travel Club (2,3); Student Control (2,3); Riding Club (2); All-Girls' Party (1,2,3,4)



PAUL SANDLER ZELINSKY

A Capella Choir (4); Baseball (2); Basketball (1); Boy's Junior Glee (3); Boys' Senior Glee (3); Bowling (3); Football (2); Intramural Sports (1,2); O-Club (4); Homeroom Representative (3,4); Music Festival (3); Road Show (4); ROTC (1,2,3,4); Staff Sergeant (1,2,3,4); N.C.O.C. (3,4); Tennis (3,4); Opera (3,4); Scrap Drive (3)

JOHN J. BUKACEK

ROTC Band (2,3,4); Beginners' Band (1); Concert Band (2); Road Show (1,2,3,4); Military Police (2); Homeroom Representative (3); N.C.O.C. (2,3); ROTC (1,2,3,4); Private First Class (4); Student Control (4)

SENIORS NOT PICTURED

January

ANDREW BARTON
DAVE NEWBY
OLIVER WOOTEN
BETTY BOETEL
DONNA DOW
MARY LOU MIXELL
MARGY LEE SMITH
DORIS WINBERG

June

ROBERT N. ANDERSON
GEORGE GIANNOU
PAUL R. KLABUNDE
JAMES GEORGE SCOTT
ERNESTINE BIRKNER
JOAN MANNHEIMER
JOAN WICKHAM

September

BOB FLANAGAN
GENE D. HARRINGTON
ROBERT TRUMAN JONES
STANLEY BRUCE PARKER
ROBERT SCOTT
LYDA MONTGOMERY
LOIS MARIE SALMAN
BERTHA DAVIS



Hugh Mactier
Ideal Central Boy



Shirley Lierk
Ideal Central Girl



Norman Thomas
Most Likely
to Succeed



Lois Ann Snyder
Most Likely
to Succeed



Richard Herrmann
Best Student



Beverly Ulman
Best Student



Norman Williams
Most Popular



Mary Stuht
Most Popular



Bob Wells
Best Voice



Bonnie Sliger
Best Voice



Patton Campbell
Best Actor



Mary Lou Stevens
Best Actress



Duane Hovorka
Best Artist



Marilyn Thompson
Best Artist



Alan Bramson
Best Musician



Ann Bennett
Best Musician



Dan Sylvester
Most Personality



Rosemery Eastlack
Most Personality



Bob Allen
Best Looking



Alice Christiansen
Prettiest



John Kruse
Best Dressed



Wilma Smalls
Best Dressed



Tom Shea
Best Dancer



Marjorie Allen
Best Dancer



Bill Berner
Best Mannered



Olyve Miller
Sweetest



Walter Graves
Best Line



Mary Andre
Best Line



Jack Dahlgren
Best Caveman



Marjorie Benson
Most Romantic



Peter Isacson
Worst Woman-Hater



Jane McCumsey
Most Sophisticated



Jim Lyle
Biggest Bluffer



Gay Farber
Peppiest



Jack Clow
Man About Town



Barbara Loucks
Best Natured



Bob Ahmanson
Wittiest



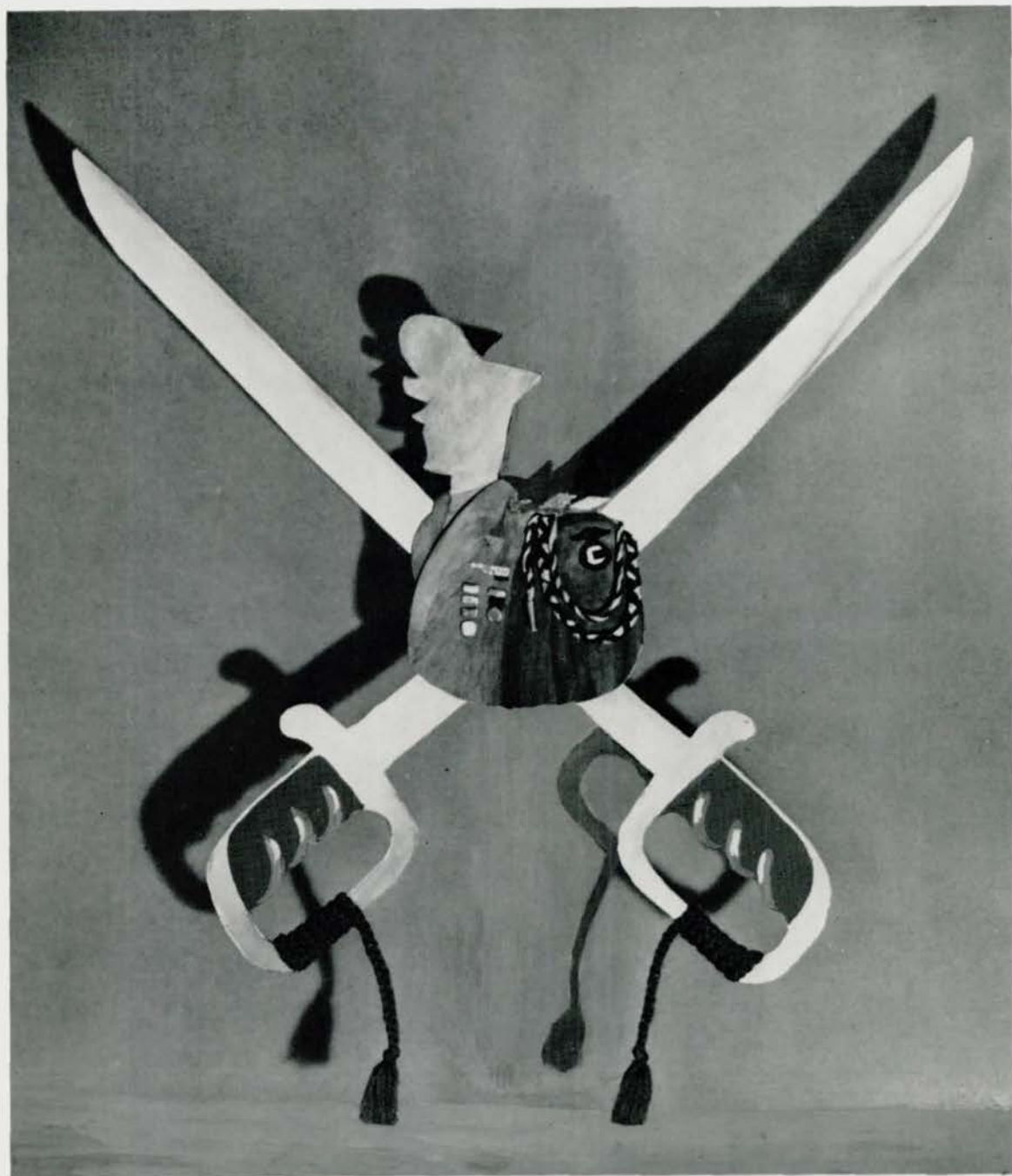
Nadine Hale
Wittiest



Harold Paulsen
Best Athlete

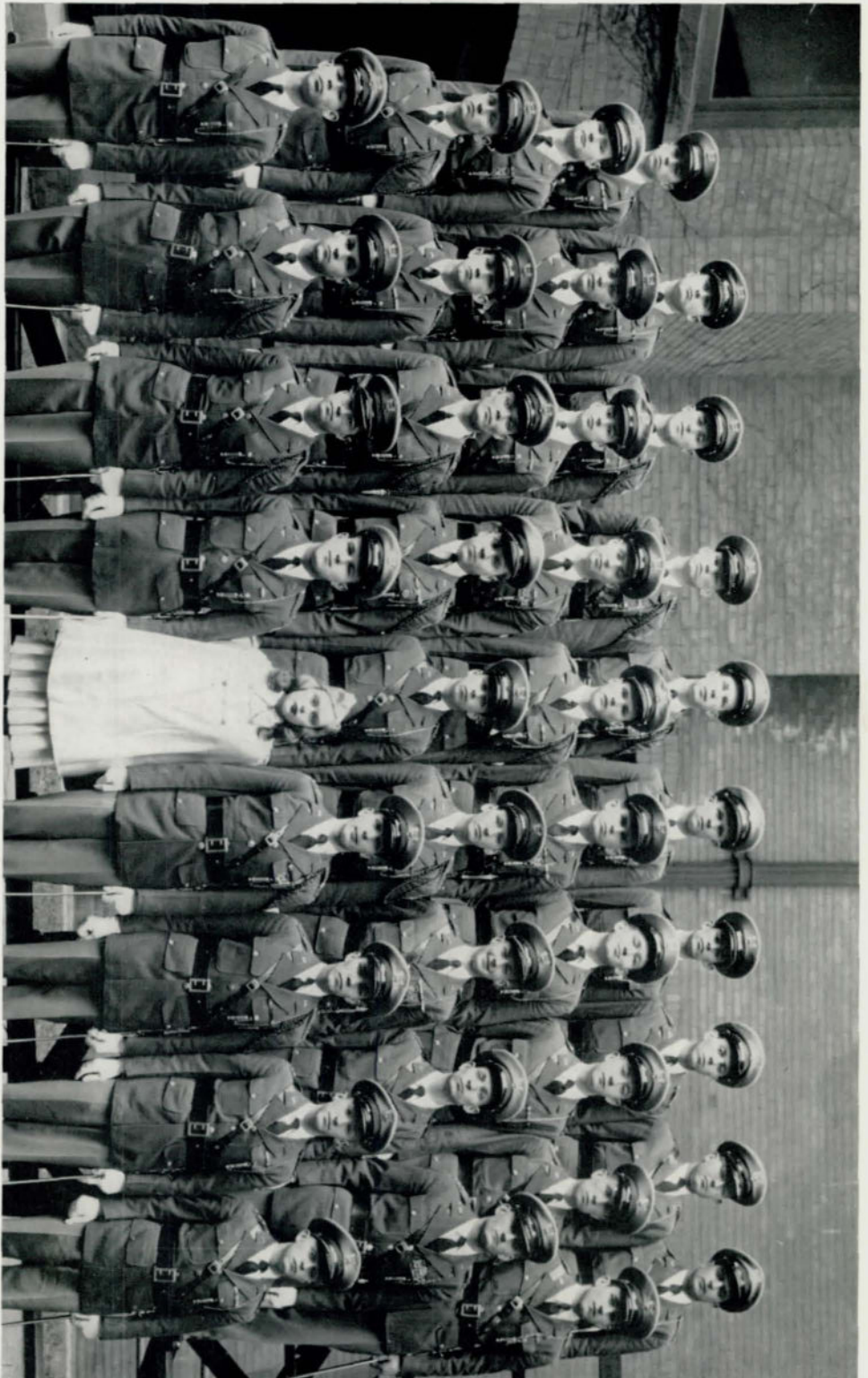


Jean Mahaffey
Best Athlete



SHOULDER HARDWARE

D. Hovorka



C.O.C.

Second Lieutenant Niess, Second Lieutenant Winer, Second Lieutenant Mozer, Second Lieutenant Dahlgren, Second Lieutenant Brownlee, Second Lieutenant Hertzino, Second Lieutenant Hubbard, Second Lieutenant Gillin, Second Lieutenant Foler, Second Lieutenant Simon
 Second Lieutenant Battreall, Second Lieutenant Cobb, First Lieutenant Sylvester, First Lieutenant Cook, First Lieutenant Waldie, First Lieutenant Peterson, First Lieutenant Christian, First Lieutenant Mack, Second Lieutenant Hallbrook
 Captain Kruse, Captain Berrigan, Captain Clow, Captain Freymann, Captain Lyle, Captain Berner, Captain Groves, Captain Bacon
 Captain Williams, Captain Mactier, Major Lepinski, Major Protzmann, Honorary Lieutenant Colonel Shirley Lierk, Lieutenant Colonel Swenson, Captain Carlson, Captain Marks, Captain Wheelan
 Not in picture Captain Markeson



ROTC BAND

Outlea, Tully, Brown, Kaiman, Scott, Schiller
 Kaplan, Bursik, Beachy, Hornstein, C. Smith, Trimble, Wintroub, Nearenberg, Cook
 Rice, Srb, Schmidt, Filley, Clay, Browning, Levine, Langley, Berquist
 Simon, Halbrook, Bramson, Boker, Anderson, Graham, Tesar, Galata



RIFLE TEAM

Mullens, Thomas, Waldie, Bacon, Marks, Loomis, Kipling
 Page, Nearenberg, Stewart, Flemmer



CRACK SQUAD

Fallmer
Smith
Dahlgren
Devereux

Carlson

Davis
Brownlee
McFayden

Conboy
Ironfield
Wood

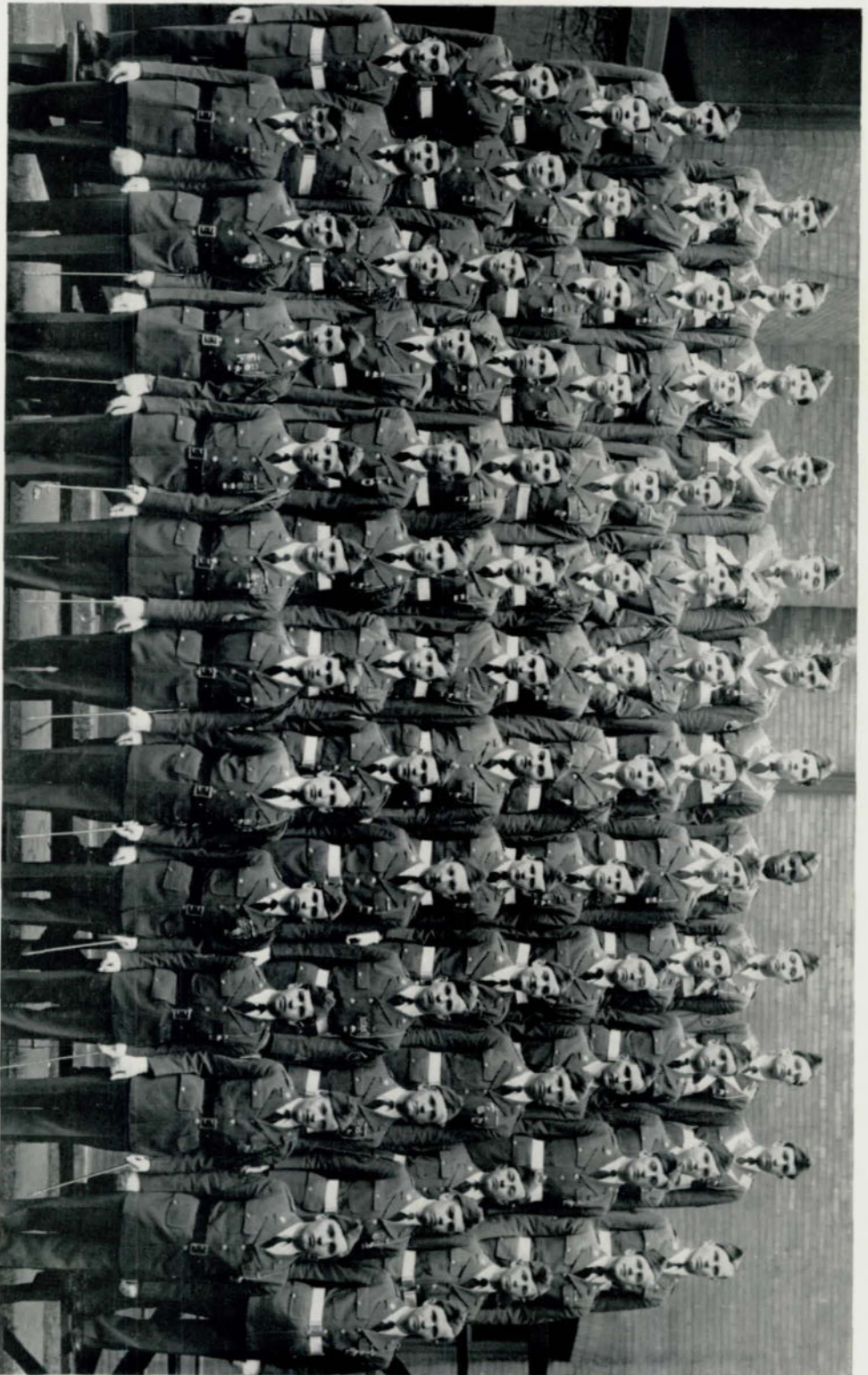
Clow

Bock
Mozer
Hickman
Morris



SILENT PLATOON

Bierman, Broderdorp, Whited, Bloom, Pothen, Lipsey, Cohn, Moody, Cahoon
Duda, Neely, Flynn, Steinberg, Stern, Gilmore, Scott, Harris, Burstein
Maire, Howards, Mettlen, Brill, Winer, Williams, Gitlin, Johnson, Bighia



N.C.O.C.

Bierman, Focht, Langley, Beechy, Bursik, Srd, Schmidt, Brown, Tully, Trimble, Nearenberg, Wintroub, D. Rice
 H. Chapman, Kyle, Clinefelter, Lipsey, Steinberg, Hickman, Changstrom, Devereux, Flemmer, Koll, R. Smith, Buchanan, Brill
 Gannert, Bahr, Roznick, Pedersen, Pothan, Delbeil, Lipsey, Moret, Letler, Johnson, Tetrick, Miller, Johnson
 Gendler, Zelinsky, Morris, Sistrk, Vanhauer, Corboy, Harris, Hawkins, Bighia, Kipling, Mullens, Loomis, Mettlen
 Crowford, Ironfield, Davis, Wood, Peterson, V. Smith, Fallmer, Bock, Clark, McFoyden, Tesor



M. Diehl

S. Bloom

Sr. Class

FRONT AND CENTER



NATIONAL HONOR SOCIETY

Pepper, Diehl, Brogan, Vivien Smith, Johnson, Vernon Smith, Fredericksen, MacIver, Minord, Lettler, Dohlgren, Protzman
 Keller, Fiddock, Lueder, Mason, Bergstrom, Swaboda, Olsen, Gordon, Thomas, Belmont, Wintroub, Bromson
 Legge, Treadwell, Cood, Roessig, Astleford, Studna, Freyman, Swenson, Loucks, Gilmore, Faler, R. Smith, Marks
 Cooper, Swanson, Miller, Korisko, Lahr, Williams, Lyle, Isacson, Phelps, Feter, Hopkins, Winer, Mazer, Mangionnell
 Ramer, Snyder, Carlson, Allen, Henderson, Drake, Dickinson, Swiler, Stuhl, Stevens, Kulakotsky, Uimon, Purdham, Bailey
 Not in picture: Maxwell, Herrmann, Bell, Paulsen

HONOR SOCIETIES

The National Honor society is an organization which honors those seniors who have outstanding scholastic records and who actively participate in school enterprises.

With the nation engaged in a great war Central has encouraged and stressed scholastic development and leadership, for it is the students of today who are the foundation of tomorrow.

The organization had its beginning in 1918 when Joseph G. Masters, then principal of Central High school, drew up a constitution for a National Honor Society. The National Association of Secondary School Principals adopted his suggestions in 1921.

Every spring a committee with Mr. Fred Hill, principal, as chairman meets to elect those seniors from the upper third of the class who are best qualified for membership in the society. The number chosen is 15 per cent of the senior class.

The Junior Honor society, an organization to recognize underclassmen who have made high goals in scholarship and school activities, was founded by Mr. Masters in 1923.

Central High school maintains three chapters of Junior Honor society, Epsilon for freshmen, Delta for sophomores, and Gamma for juniors. Members elected to the society must have two A's, no grade below a B unless he is carrying 5 credits and then he is allowed one C.

This spring 167 members were elected to the Junior Honor society. In an assembly in the auditorium the members were announced and Mrs. Augusta Turpin delivered the charge.



JUNIOR HONOR SOCIETY . . . GAMMA SOCIETY

Gendler, Barson, Baumer, Colton, Chapman, Way, Neely, Hunt, Bruening, Grove, Marcell, Carson
 B. Hawkins
 Pospichal, Frazee, Jorgensen, Hudson, Beckman, Mangiameli, Brain, Allyn, Bukacek, Kittoe, Graham
 Lane, Gaither
 M. Johnson, Minkin, Blacker, Lincoln, Shick, Taub, Noodell, H. Loomis, Newey, Low, M. Loomis
 Korb, Roadhouse, Bergman
 Demorest, Dustin, Carman, Morris, Bahr, G. Johnson, Redfield, Phelps, Bush, Searle, Brainard, Mendelson
 Nordin

Not in picture—Maly, Segal, Linsman, Tamai



JUNIOR HONOR SOCIETY . . . DELTA CHAPTER

Scheuermann, Stewart, Howell, Niehaus, Solomon, Howard, Focht, Rechter, Carlson, Auguston, Humlicek,
 Rosenblatt
 Ulman, Lehmar, Polsky, Hubbard, Bercovici, Albert, Katzman, Glas, Davis, Cathro, Byron, Deffenbaugh
 Levenson, Sherman, Plotkin, Krecek, Noble, Beber, Bade, Knapple, Fullaway, Caldwell, Wohlner, Weise,
 London
 Feldman, Abariotes, Neselson, Maire, Rice, Goldstein, Shrago, Anderson, Miller, Munger, Taylor, Feldman



JUNIOR HONOR SOCIETY . . . EPSILON CHAPTER

McBride, Patterson, D. Bernstein, Robinson, Dappert, Rechter, Colton, Deneberg, Pizzato, Byrne
 Warner, Koch, Magid, K. Johnson, Merriam, Kennedy, Forbes, Ostronic, Bolker, Porter
 Garon, Freeman, Wintroub, Mellinger, Fox, Abramson, Reese, Reynolds, Suchan, Hanson, Redfield
 Dinsmore, Osoff, McCready, Kellman, Moskovitz, Troughton, Weinhardt, Anway, Baliman, Tepperman
 M. Bernstein, Savidge, Bailey, Byrnes, Newman, Haggart, Seig, Wistedt, Grace, Robinson



SENIOR OFFICERS AND SPONSORS

Young, Purdham, Stevens, Heath, Mason, Brogan, Hale, Stuht, McCumsey, Cook, Bloom
 Snyder, Coad, Miller, Christiansen, V. Smith, Waldie, Minard, Lepinski, Shea, Mr. Richards, Mrs. Knott,
 Miss Pilling
 Ahmanson, Isacson, Kruse, Christian, Williams, Miss Carlson, Mr. Eggen, Thomas, Swenson, Carlson,
 Freyman, Mrs. Roush



SENIOR COMMITTEES

Bowman, Ramer, Denenberg, Niess, Bramson, Storz, Gillespie, Lueder, Whitcher, Gallagher, McLain, Webb
 Treadwell, Dickinson, Cullingham, Gitlin, Simon, Loukas, Kuppinger, Hale, Patton, Henderson, Ontman,
 Martin, Slater
 S. Johnson, G. Carlson, Kulhanek, Wintroub, McMillan, Fiddock, Stuht, Benson, Sliger, Goff, Rudolpho, Koriska
 Lefkowitz, Anderson, Loucks, Mason, Smith, Gilmore, Swoboda, Cobb, Lahr, White, Cook, Pepper, Keller,
 Edwards
 Thompson, Hendrikson, Cohen, Steinberg, Allen, Hovorka, Charles A. Petersen, Samuelson, Dahlgren, Mozer
 A. Johnson, Cooper
 Henderson, Harris, Winer, Graves, Sylvester, Campbell, Clow, Protzman, Lyle, Marks, Kulakofsky, Weinhardt



CENTRAL HIGH PLAYERS

Lahr, Cornish, Jack, Bergers, Combine, Hunter, Carleman, Delaplane, Keith, Kimerle, Christopherson
 Cooper, Deffenbaugh, Cherniss
 M. Eastlack, Allen, Anderson, Hoekstra, Bukacek, Kottman, Hunt, Hamilton, Devereaux, D. Carlson
 Henderson, Carlson, Jones, Crisman
 Hanger, Benson, Lowe, Corkin, Carson, Low, Driscoll, Bockes, Heath, Loukas, M. Cooper, Jamison
 Korisko, Kane, Lashinsky
 Levenson, Feldman, Legge, Hickey, Palsky, Luftbeg, Dawson, Brogan, Grove, Lefkowitz, J. Cook, Hubbard
 Kious, D. Henderson, Carleman
 Bunch, Cates, Keller, Catalano, Coad, R. Eastlack, Elmore, Brownlee, Campbell, Diehl, Alloy, Friedel
 Horne, Haase, Lehmer



CENTRAL HIGH PLAYERS

Vingers, Patton, McLellan, Muller, Swiler, Smith, Turner, Schnieder, Steinberg, Miller, Whelan, Moore
 Morrill, Ulman, Young
 Parsens, Muxen, Russum, B. Ulman, McFarland, White, Neely, Reinsreiber, Plotkin, Wilson, Tepperman
 Nordin, Webb
 Stoklas, Miller, Winer, Stevens, Olsen, Swoboda, Redfield, Phelps, Resnick, Schulte, Shipley, Maher,
 Roodhouse, Wilson
 Storz, Taylor, Munger, Radinowski, Mactier, Swenson, Sylvester, Thomas, Shack, Newey, Riss, Wolf
 Rushlau, Snyder, Miller



NATIONAL THESPIANS

Alloy, Marrer, Thomas, Swenson, Mactier, Campbell, Carleman, Reinschreiber, Wells
 Lahr, Keller, Anderson, Bukacek, Hunt, Christianson, Wilson, Wiesman, Cherniss, Webb, Nordin
 Bunch, Legge, Henderson, Stevens, Cook, Miss Jones, Newey, Diehl, Eastlack, Horne

THE THEATER

Held in highest regard throughout the United States is the organization of National Thespians for which membership is gained only after long and hard work. Membership in this nation-wide dramatic club, chartered at Central High in 1931, is perpetual and retained by the student for the rest of his life. This organization differs from others in that it is professional and not social.

To qualify for membership in this honorary society, one must have played a lead or two minor parts in a three-act play, or a lead in six one-act plays. New members are initiated in a formal, traditional ceremony and receive a membership certificate. After his initiation, each member is entitled to subscribe to the National Thespian magazine. The membership this year exceeds that of any previous year.

This year, as in past years, the Thespians presented a one-act play, "Rendezvous," in the Road Show. Taking part in the play were Marilyn Henderson, Larry Whelan, Rosemerry Eastlack, Marion Keller, Robert Delaplane, Norman Thomas, and Harry Alloy. The play was directed by Miss Myrna Vance Jones, sponsor of the club. Assistant director was Mrs. Josephine Tope, and student director was Rosemerry Eastlack.

Because of the war Thespians did not send a play to the National Thespian conference this year, but in past years have submitted several. Bill Newey is president of the club, and Marilyn Diehl, secretary-treasurer.



SENIOR PLAY

Shipley, Odda, Corkin, Ramer, McFarland, Cohn, Steinberg, Cook, Keller, Ontman, Dennenberg, Haas
 Patton, Gillespie, Ahmanson, Muller, Anderson, Brogan, Smith, Lefkowitz, Hale, Andre, Miller, Bowman
 Young, Allen, Lahr, Leuder, Studna, Christiansen, Schulte, Kuppinger, Loukas, Hunter, Heath, White, Webb
 Henderson, Cullingham, Brownlee, Delaplaine, Allen, Clow, Garon, Vanhauer, Mozer, Niess, Cherniss
 Radinowski
 Coad, Stevens, Phelps, Flynn, Cobb, Sylvester, Miss Jones, Olsen, Campbell, Mactier, Reinschreiber, Carleman,
 Horne



STAGE CREW

Trimble, Meyer, Rehmeir, Galata, Ennis, Malloy, Maguire, Meehan, Sparks
 Merrill, Briggs, Reese, Melcher, White, Paletto, Lower, Flemmer, Young



STUDENT COUNCIL

Taylor, Bockes, Patterson, Bailey, Marks, Vanhauer, Hunt, Carlson, Nordin, Deffenbaugh
Tepperman, Korb, Fox, Bush, Thomas, Brogan, Stuht, Caldwell, Roadhouse

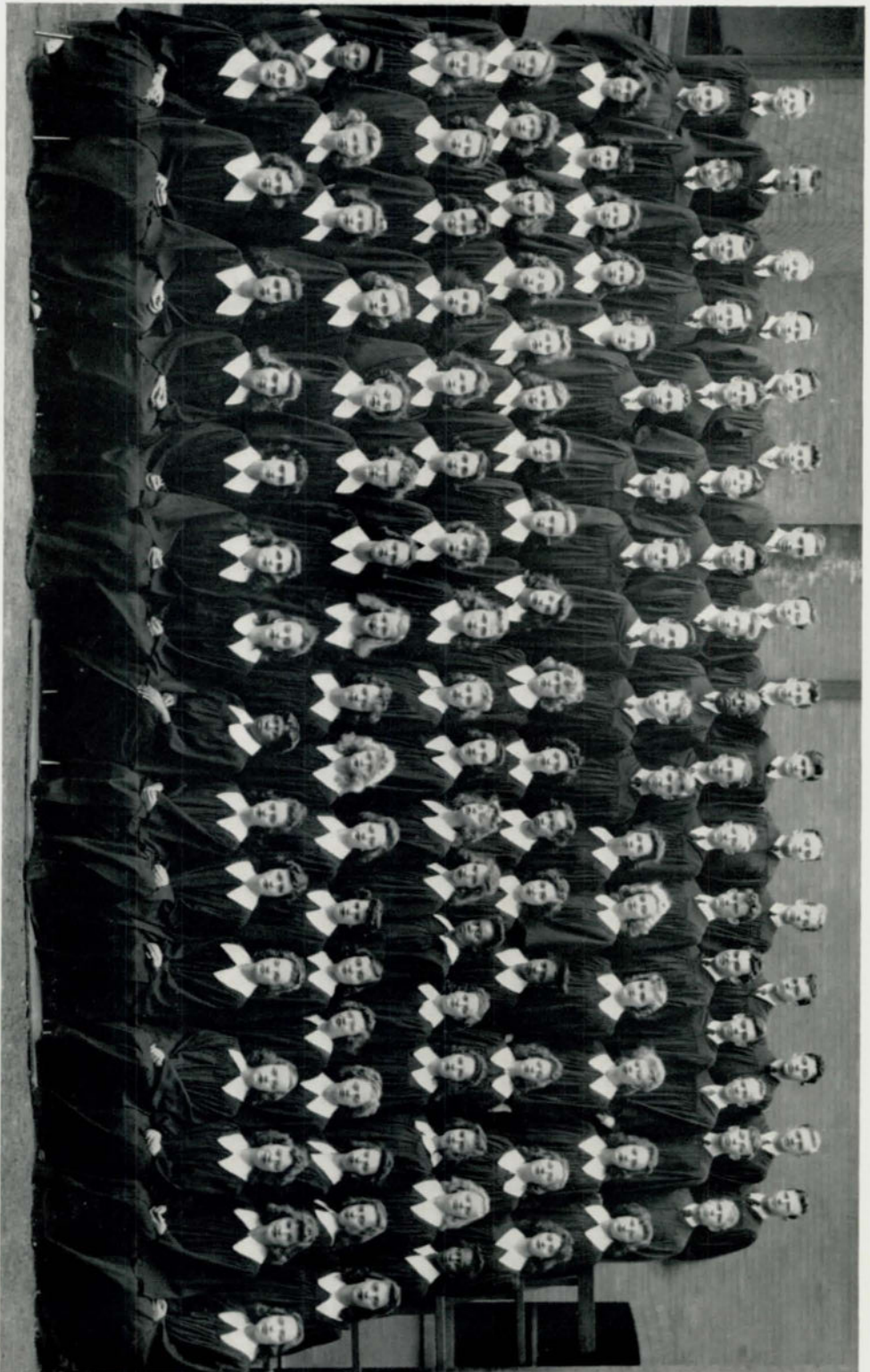
DEMOCRACY AT WORK

The Student Council, Central's mainstay of democratic student government, has been active in both community service and student organization since 1939. With the express purpose of facilitating friendly relations between the student body and the faculty through active participation in school affairs, the members of the Council have concentrated their efforts on the promotion of such events.

In addition to administrating school affairs, the Council has promoted the war effort by aiding the ration board, promoting the Red Cross and Community Chest drives, and selecting and presenting a memorial plaque to the school in honor of Central's boys who have given their lives in World War II. Other activities include organizing the homeroom representatives, sponsoring dances in the gym, forming teachers' helpers and ushers bureaus, checking student activities, raising funds for the Children's Memorial Hospital, and sponsoring the annual girls' party.

Present members of the Student Council were elected by their respective classes in a school-wide election. They choose their own officers. For the first semester they were Maude Brogan, president; Norman Thomas, vice president; Mary Ann Korb, secretary; Beverly Bush, treasurer; second semester, Norman Thomas, president; Jean Roadhouse, vice president; Mary Stuht, secretary, Beverly Bush, treasurer.

The Student Council is under the sponsorship of Mrs. Irene Jensen, F. Y. Knapple, and Principal Fred Hill.



CHOIR

Johnson, Wells, C. Marks, Seegren, Elmore, W. Policz, Harrington, Parker, Fleishman, Baumer, Winer, Beechy, Keith, Zorinsky, Iske, Freckin
 Swartz, Solomon, Thomas, Pedersen, Steiner, Trobold, Clayman, Gilmore, Young, Plotkin, J. Marks, Langley, Mares, Loomis, Burdick, Newey, Ahmanson
 Ferguson, Votava, Bergman, Sconce, Bergstrom, Olson, Kall, MacTier, Swenson, Celaplaine, Sylvestre, Haupt, Gifford, Cooper, B. Policz, Treodwell, Byron
 McLane, Bunch, Storz, Turk, Steinbart, Busch, Fohort, Skryker, Driscoll, Moeller, Noodeli, Norman, Shuck, Billingsley, Astleford, Brainerd, Mogzammim
 Lierk, Carman, Mallory, Blisserd, Wilson, Bukacek, Shupe, Swoboda, Buhl, Rosenstock, Pettv, Benson, Chase, West, McAndrews, Wohliner, Carlson, Butler
 Dudley, Sands, Jameson, Olsen, Hunt, Richardson, Loucks, Phelps, Henson, Payne, Korisko, Smalls, Bell, Young, Linda, Sommers, Kulakofsky, Mason
 Bergh, Whitlock, Dawson, Curtis, Sliger, Legge, Keller, Johnson, Ries, Redfield, Moffatt, G. Smith, M. Allen, Brogan, Chambers



GIRLS' ADVANCED SENIOR GLEE

Wilburn, Cleveland, Christiansen, McClellan, Benson, Edwards, O'Brien, McCreary, Swanson, Peterson, Mann,
 Van Brunt, Wallace, Hamilton, Smith, J. Weir, Cooper, Hope
 Novotny, Butera, Moreland, Catron, Laub, Landwehrkamp, Rummel, Luttbeg, Baumer, Goodlet, Wrightson,
 Vingers, Krupa, Menshik, Lambert, Brown, Corkin, Crowley, Losch
 Reynolds, Winer, Krecek, Carter, Cornish, Fiske, Noble, P. Weir, Hutchs, Hapke, Hesler, Bolker, Frazee,
 Haase, Koom, Ronneau, Finlayson, Petello, Chorney
 Plotkin, Thompson, Peralman, Nickerson, Porter, Kirshenbaum, Hickey, Blocker, Hoekstra, Gilinsky, Caldwell,
 Gans, Coffee, Kottman, Young, R. Stewart, Dolgolf, Behn, Faison, Stimpson, Corenman



BOYS' SENIOR GLEE

O'Hanlon, Long, Anderson, Abramson, Carlson, Cornish, Roccaforte, Thomas
 Henderson, Van Gilder, Asbyll, Johnson, Price, McCaffery, Robb, Hudson, Curran
 Vacek, Edwards, Smith, Davis, Howard, Vierling, Miller, Slenker, Belzer



ORCHESTRA

Grace, Albertson, Niehaus, Trimble, Outka, Kirby, B. Martin, B. Smith, Plotkin, Maniscalco
 M. Martin, Nenshik, Tully, Clay, Olsen, Majors, Tunell, Hornstein, Tesar
 Woodyard, Siekert, Rushlau, Casgrove, Warwick, E. Smith, Devereux, Hinton, Stewart
 Schiller, D. Rice, Bramson, Levine, Halbhook, W. Rice, Srb, Nearenberg



DISCUSSION CLUB

Feldman, Gendler, Lynch, Williams, Schack, Phelps, Nesselson, Finer
 Burstein, Alloy, Pedersen, H. Chapman, Jones, Carleman, Davis, Barson, Levenson
 Loomis, Peterson, Brownlee, Thomas, Leffler, R. Chapman, Ferer, Hopkins, Sherman



DEBATE

Levenson, Sherman, Troughton, Swartz, Seig, Richards, Rosenburg, Goldstein, Eastlack, Feldman, Gendler, Schack, Thomas, Phelps, Cohn, Ferer, Faier, Richman

DEBATE

Under the leadership of Coach Lloyd R. Richards, the debate team completed another successful year by placing second in the National Forensic League Sweepstakes tourney for 1944.

The Benson invitational tournament was won by Central; in the Missouri-Valley free-for-all Irvin Gendler and Norman Thomas won second place; and Robert Faier, Lee Ferer, Irvin Gendler, Austin Phelps, Stanley Schack, and Norman Thomas went to the semi-finals of the Missouri-Valley Boys' tourney where the two teams tied for fourth.

Robert Cohn, Lee Ferer, Irvin Gendler, Stanley Schack, Norman Thomas, and Coach Richards went to the Wesleyan Invitational tournament. Irvin won the extemporaneous contest there.

Individual honors in the National Forensic League meet went to Lee Ferer, Irvin Gendler, Austin Phelps, and Norman Thomas for placing third in debate. Norman Thomas won first in original oratory; Austin Phelps received third in humorous declamation; Irvin Gendler placed third in extemporaneous speaking; and Robert Faier won third in memorized oratory.

Robert Faier, Lee Ferer, Irvin Gendler, Austin Phelps, Stanley Schack, and Norman Thomas were awarded letters.



REGISTER STAFF . . . FIRST SEMESTER

Petrow, McFarland, Fiddock, Gitlin, Davis, Anderson, Kimerle, Benson, Andre, Cohen, Miller, Webb
 Coad, Drake, Stuht, Christiansen, Studna, Carleman, Brogan, Jacobsen, Rosenberg, Eyre, Civin, Snyder
 Swanson, Keller, Lierk, Johnson, Schack, Garon, Mason, Smith, Lincoln, Sommer, Veitzer, Fogel
 Purdham, Ferer, Winer, Isacson, Lyle, Faier, Kulakofsky, Mactier, Eastlack, Harris, Bramson, Cooper, Ulman

REGISTER STAFF

FIRST SEMESTER

SECOND SEMESTER

Hugh Mactier	Managing Editor	Hugh Mactier
Rosemerry Eastlack	Editor-in-Chief	Rosemerry Eastlack
Robert Faier	Makeup Editor	Robert Faier
Ruth Kulakofsky	News Editor	Ruth Kulakofsky
Peter Isacson	Sports Editor	Peter Isacson
Eva Swanson	Business Manager	Eva Swanson
Frances Veitzer	Advertising Manager	Frances Veitzer
Beverly Ulman	Literary Editor	Beverly Ulman
Paul Gitlin	Circulation Manager	Paul Gitlin
Lois Snyder }	Feature Editors	{ Lois Snyder
Arlene Cooper }		{ Arlene Cooper
Eleanor Eyre }	Proof Readers	{ Susie Carson
Joan Jacobson }		{ Phoebe Low
Joan Webb	Exchange Editors	{ Joan Webb { Eleanor Eyre
Nathalie Mason	Senior Reporter	Nathalie Mason
Marjorie Benson }	Feature Writers	Marjorie Benson
Alan Bramson }		Alan Bramson
John Carleman }		John Carleman
Alice Christiansen }		Alice Christiansen
Adeline Coad }		Adeline Coad
Olyve Miller }		Olyve Miller
Mary Stuht }	Mary Stuht	
Rae Dickinson	Rewrite Editor	Rae Dickinson
Pat Roessig }	Librarian	Maryann Loomis
Marion Keller }		



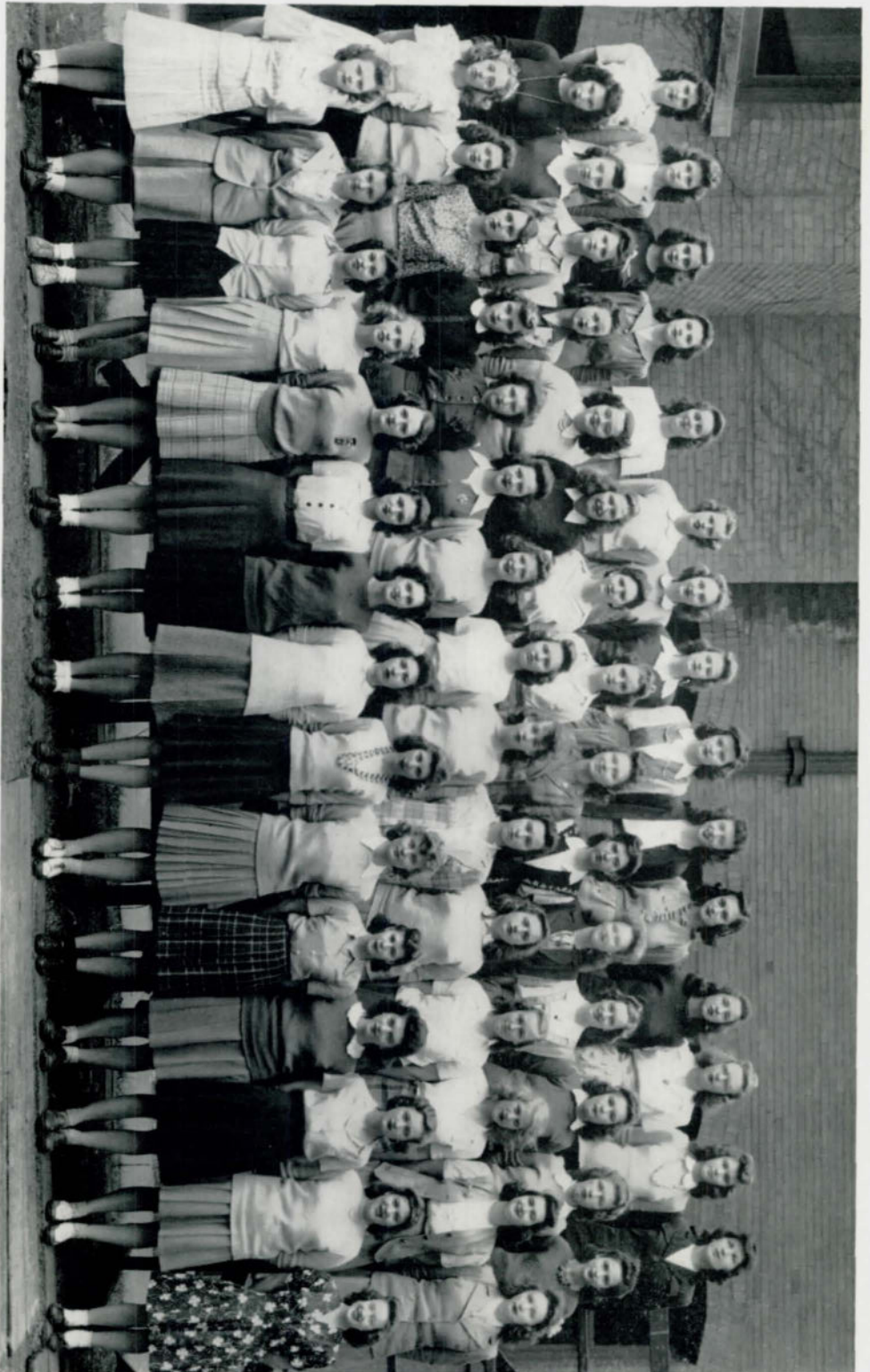
REGISTER STAFF . . . SECOND SEMESTER

Petrow, Korb, McFarland, Kimerle, Gitlin, Davis, Gendler, Luttbeg, Carson, Loomis, Low, Pepper, Eyre
 Miller, Coad, Christiansen, Stuht, Studna, Hunt, Carleman, Brogan, Benson, Rosenberg, Snyder, Demorest,
 Blacker, Webb
 Cahill, Swanson, Dickinson, Bukacek, Bush, Schack, Garon, Mason, Smith, Sommer, Lincoln, Veitzer, Fogel,
 Brainard
 Purdham, Ferer, Winer, Isacson, Lyle, Faier, Kulakofsky, Mactier, Eastlack, Harris, Bramson, Ulman, Cooper



O-BOOK STAFF

Petrow, Drake, Sommer, Sorenson, Jacobson, Swanson, Kimerle, Diehl, Loukas, Rosenberg, Civin, Davis
 Johnson, McMillan, Studna, Christiansen, Gitlin, Davis, Harrington, Hunt, Stuht
 Benson, Eastlack, Ulman, Graham
 Thompson, Failla, Helaney, Isacson, Lyle, Ferer, Hovorka, Raduziner
 Lefler, Fuller, Gray, Veitzer, Bloom
 Miller, Cooper, Weinhardt, Snyder, Winer, Harris, Faier, Garon, Mason, Smith, Lierk, Coad, Williams



GIRL RESERVES

Gallagher, Kyle, Komicki, Wilson, Koopman, Gilbert, Sadtfield, Hultman, Humlicek, McKeen, Mangiameli, Ruskau, Kellmann, Sauer, Loukas
 Maclean, Hunt, Hunter, Britt, Pospichal, Jorgensen, L. Hunter, Gallagher, C. Hunter, Consolino, Hayes, Swanson, Green, Asplund, Fisher
 Sanders, Astleford, Dustin, Petrick, Thays, Korisko, Kann, Burney, Petrie, Gans, Winer, Barnes, Rohrig, Baumer, Olney
 Novotny, Pangie, Sholkovski, Paulson, Johnson, Cardella, Sliger, Sapienza, D. Schneider, Grove, Hunter, Daprizio, E. Schneider, Wiseman, Stoklas



JUNIOR RED CROSS

*Demorest, Pradell, Caldwell, Maire, Follmer, Johnson, Bock, Fox
Taylor, Kulhaneck, Ogden, Mr. Peterson, Diehl, D. Henderson, M. Henderson*

JUNIOR RED CROSS

Working with various departments and clubs of the school, Central's Junior Red Cross chapter this year has undertaken many important war activities.

Once a month the Junior Red Cross council met with the councils of other Omaha high schools to plan activities and projects, and chapter meetings at Central are held monthly.

The entire school participated in drives to collect puzzles, games, and jewelry to be used by servicemen in bartering with natives of the South Pacific.

Lininger Travel club and Colleens compiled scrapbooks for wounded servicemen while art classes designed and made 2,000 Easter greeting cards for army and navy hospitals. Bed jackets, utility bags, and wash cloths were made by the homemaking department. The council also supplied after school hostesses at the Red Cross chapter house and helped with the rationing program last fall.

Officers of the council, elected in an all school election, are Marilyn Henderson, president; Hugh Follmer, vice-president; Betty Caldwell, secretary; and Marilyn Diehl, treasurer. Sponsors are Miss Josephine Frisbie and Harold O. Peterson.



ALL GIRLS' BALL

Loucks, Brogan, Hunt, Caldwell, Korb, Roodhouse, Dettfenbaugh, Srb, Mrs. Hill, Her Majesty Bonnie Sliger, Christiansen, Nordin, Taylor, Bockes, Bailey, Bush, Kimberle
 Dickinson, Mulhall, Loukas, Lueder, Percival, Jamieson, Carlson, Stuhlt, Savidge, Gilmore
 Carson, Cooper, Hughes, Dunn, Tepperman, Miller, Allen, Farber, Uimon, Eastlack, Ballman, Stevens, Snyder, McLain, Purdham, Edwards, Porter, Bryon, Hawkins



BONNIE SLIGER, MISS CENTRAL X, and her ladies-in-waiting, Alice Christiansen and Jo Ann Srb, pause in their march to the throne.

THE CAMEO BALL

Amidst the enthusiastic applause of over a thousand girls and spectators on the evening of April 28, Bonnie Sliger ascended the throne and was crowned Miss Central X, queen of the Cameo Ball.

The tenth annual all-girls' costume party was presented by the Student Council, and Mrs. Irene Jensen, Miss Ruth Pilling, Miss Josephine Frisbie, and Miss Elizabeth Kiewit, counselors.

Preceding the queen in the coronation march were Alice Christiansen and Jo Ann Srb, the ladies in waiting. These three girls were elected from the ten senior princesses by Central girls attending the ball. Marching as princesses were Gay Farber, Peggy Muller, Lois Ann Snyder, Mary Lou Stevens, Mary Stuht, Sally Swiler, and Beverly Ulman. Completing the court were 22 countesses, ten class officers, and ten Student Council girls.

Prior to the ceremony a colorful program and informal dance were held in the gym. Prizes, donated by girls who participated in the coronation, were awarded for the outstanding costumes.

Queens elected at former girls' parties are Betty Nolan, Peggy Sheehan, Virginia Lee Pratt, Frances Morris, Betty Marie Wait, Jeanne Burke, Mary Joan Evans, Marilyn Hughes, and Joan Huntzinger.



LININGER TRAVEL CLUB

Nickerson, Ott, Bergstrom, Drake, Demorest, Bolker, Doran, Shrago, Lehmer, McCready, Thomas, U. Goodwin, Whitcher, Gallagher, Grace
 Hanger, Billingsly, O. Goodwin, Jenkins, Glas, Johnson, Ogden, Kulhaneck, J. White, Cooper, Poole, Ulman, Catalano, Lashinsky, Bezman, S. White
 Quinlin, Allen, Peterson, Pradell, Kulokofsky, Resnick, Anway, Reynolds, Bernstein, Littleton, Heath, Diehl, Stevens, Shick, Carleman, Stenberg
 Swanson, Gaither, Graham, Mallory, Stuht, Loucks, Rosenstock, Hapke, Martin, Percival, Deveraux, Loukas, Sconce, Breetzke, Irwin
 Whitehead, Gorbali, Nicholson, Gerber, Weise, Mendelson, Kirshenbaum, Grove, Hesler, Koom, Slight, Fredel, Winer, Leffler, Evers, Francis



LININGER TRAVEL CLUB

Corenman, Taylor, Hoekstra, Stewart, Van Brunt, Kavan, Smith, Hite, Low, Turk, Frazee, Losch
 Thompson, Boches, Peterson, Cronland, Kottman, Curtis, Wilbourne, Hunt, Brogan, Low, Carson, Roadhouse
 McAvin, Brainard, Deffenbaugh, O'Brien, Blissard, Swoboda, Gilmore, Whitlock, Busch, Bergh, Hawkins
 Meyer
 Eastlack, D. Carlson, Savidge, Christopherson, Caldwell, Fullaway, Redfield, Phelps, Knapple, Treadwell, Weinstein, Harrison



LININGER TRAVEL CLUB

Blackstrom, Fiddock, Brodkey, Robinson, Jameson, Lorrimer, Bailey, Porter, Muller, Wohlner, Feldman, Redfield, Baliman, Shyken
 Bernstein, Davis, Miller, Vingers, Danielson, Marcell, Luttbeg, Freed, Crowley, Weinman, O'Grady, Shipley, McLain
 Kotrc, Cahill, Biggs, Britt, Driscoll, Osoff, Blacker, Jorgenson, Runyan, Haupt, Ulman, Eyre, Krupa, London
 Tepperman, Johnson, Dustin, Pospichal, Speigal, Robinson, Minkin, Cuthperson, Fike, Dickinson, Stryker, Searle, Stuhrt
 Edwards, McClellan, Rowan, Blacker, Bercovici, Johnson, Wilkeson, Bruening, Kaiman, Civin, McKay, Bergman, Cohn
 Sherman, Parsons, Purdham, Kulhanek, Bernstein, Gray, Reeder, Radinowski, Kulakofsky, Polsky, Hubbard, Vaid, Staats

LININGER TRAVEL CLUB

Lininger Travel, the oldest club at Central High school, was organized in 1903 and named after Henry Lininger, a noted traveler and explorer who lived in Omaha.

Though originally a girls' club whose aims were social and educational, Lininger has gone all-out for victory this year, and the committees have done war work exclusively.

Since 1942 the club has managed war stamp and bond sales at Central and has reached a \$13,000 total for the past school year. Lininger members have also made scrapbooks for the soldiers, washcloths and afghans for a Kentucky hospital, collected costume jewelry for the armed forces, and other items for salvage.

Officers for the first semester were Rae Dickinson, president; Priscilla Bailey, vice president; Katherine Phelps, secretary; Peggy Jo Brainard, treasurer. Martha Redfield had charge of the finances for the war stamp and bond sales.

Officers for 1944 are Martha Redfield, president; Susie Carson, vice president; Elizabeth Fullaway, secretary; Betty Caldwell, treasurer. Belva Hawkins is war bond treasurer.

Club sponsors are Miss Virginia Lee Pratt, Miss Ruth Pilling, Miss Martina Swenson, Miss Bess Bozell, Mrs. Bessie Rathbun, and Miss May Mahoney.



COLLEENS

Dunn, Weinhardt, Chambers, McFarland, Shipley, Lacy, Bergstrom, Kimerle
 Smith, Kalezar, Kottman, McCumsey, Bell, Riss, McLain, Harrison, Greenburg
 Johnson, Lahr, Keller, Swiler, Carson, Watkins, Hale, Ketzler, Mulhall, Farber, Murger
 Hamilton, Stewart, Gallagher, Votova, Greenberg, Losch
 Henderson, Brainard, Metcalfe, Pradell, Mendelson, Searle, Stuht, Resnick, Diehl
 Stevens, Wier, Williams, Jamieson, Benson, D. Bloom, Hurwich, Iswin
 Johnson, Cahill, Miller, Katric, Moore, Bukacek, Bruning, Gray, Parks, Percival, Gillespie
 Shick, Smith, Ramer, Legge, Treadwell, Ulman, Steinberg
 Backstrom, S. Bloom, Purdham, Carleman, Bernstein, Lierk, Cullingham, Swaboda, Kuppinge
 Cook, Leffler, Fulmer Taylor, Snyder, Nordin, Francis, Bailey



COLLEENS

Smails, Patton, Fiddock, Christiansen, Cloyd, Peterson, Lawson, Hickey
 Sharpnack, Graham, Humilicek, Hultman, Wilson
 Quinlan, Blacker, Krupa, D. Henderson, Lueder, Kuhlhanek, Schnieder, Allyn, Hunt
 Catron, Jackman, Frazee, Swanson, Deck, Cain
 Biggs, Britt, Hawkins, Hite, P. Low, Heath, N. Low, Busch, Turk, Driscoll
 Vingers, Coulter, Cooper, Demorest, Carlson
 London, Shyken, Turkel, Weise, Jorgensen, Whitlock, Phelps, Wilbourne, Dawson
 White, Curtis, Bergh, Meyer, Breetzke, Lashinsky
 Eastlack, Wohlher, Trustin, W. Corkin, Ott, Larson, O'Grady, C. Hunter, Rosenstock, Olsen, Loukas
 Coad, Slight, McKay



COLLEENS

Ross, Hagerman, Ogden, Korb, Danielson, Marcell, Corkin, Darin, Loomis, Stewart
 Van Brunt, McLellan, Koom, Edwards, Petello, Glas
 Bennett, Allen, Ulman, Dustin, Henrickson, Poole, Bragan, Bush, Sheridan, Jenkins Colin, Robinson
 Kirshenbaum, Kulakofsky, Lane, Gorelic
 Sherman, Stein, Hickey, Cronland, Henderson, Reeder, Sairef, Bockes, Knapple
 Bercovici, Gilinsky, Luttbeg, Roadhouse, Cardella, Korisko
 Kaplan, Ruback, Fiddock, Albert, Lake, Nickerson, Wilkeson, Mason, Eastlock
 Grove, Schade, Deckman, Kavan, Lehmer, Deffenbaugh

COLLEENS

Working enthusiastically for Child Saving Institute, Red Cross, Family Welfare and Service Men's Center, Colleens have done much this year to further Central's war effort.

The work has been divided and apportioned to various committees which meet once a week to work on their projects. They have compiled scrap books for army hospitals, furnished cakes, candy, and sandwiches for canteens, made afghans, collected stationery and jewelry for the Red Cross.

Any Central girl may become a member of Colleens which was organized in the fall of 1925 at the suggestion of Miss Jessie Towne. Meetings are held on the second Thursday of each month, and average membership is 250.

This year's officers are Rosemerry Eastlack, president; Lois Ann Snyder, vice president; Jane Weinhardt, secretary; Mary Lou Stevens, treasurer; Dorothy Heath and Joan Cahill, sergeants at arms.

Club sponsors are Miss Nell Bridenbaugh, Miss Irma Costello, Miss Grace Fawthrop, Miss Elizabeth Kiewit, Miss Virgene McBride, Miss Ruth Pilling, Miss Myrna Vance Jones, and Miss Bertha Neale.



HOMEROOM REPRESENTATIVES—FIRST SEMESTER

Christian, Davis, Williams, Slack, Kipling, Langley, Traub, Block, Pierce, Patterson, Slater, Zelinsky
 Kirby, Merriam, Robinson, Cook, Gilmore, Kennedy, Thomas, Wilkerson, Harris, Woods, Deffenbaugh
 Tepperman, D. Cook
 Hawkins, Turk, Tharp, Kulhaneck, Niess, Diehl, Phelps, Shock, Vanhauer, Christensen, Barson, Shellenbarger
 Fesler, Sconce
 Burke, Demorest, Fiddock, Payne, Brogan, Peterson, Deible, Hunt, M. Stuht, Caldwell, S. Stuht, Eustice
 Stenberg, Heintz, Lashinsky
 Levenson, Cardella, Gray, Ott, Bennett, Hickey, Bush, Mason, Bukacek, Pepper, Loomis, Dunn, Roadhouse
 B. Bennett, Bezman
 Sholkofski, Evers, Giannau, Soiref, Elmore, Marks, Thomas, Sylvester, Newey, Boches, Korb, Taylor, Nordin



HOMEROOM REPRESENTATIVES—SECOND SEMESTER

Niess, Slack, Solomon, R. Carlson, Focht, Anderson, Kennedy, Paulson, Hudson, Fox, Ostronic, Stewart
 Byrne, Samson, Stoklas
 Lefitz, Colton, Merriam, Barson, B. Chapman, Robinson, Kadis, Berigan, Partridge, R. Trimble, Patterson
 Fynch, Graham, Tepperman, Hudson
 Hawkins, Demorest, Wohlner, Beitel, Peterson, Christian, Woods, Rubin, Gilinsky, Alberts, Brain, Fesler,
 Noble, Weinhardt, P. Low, Driscoll, Kotrc, Gerber, Rosenblatt
 Lashinsky, Biggs, Gennow, Giannau, Reeder, Petrie, Hunt, Vanhauer, Phelps, Hite, Bergh, Ronneau, Taub
 Gaitner, Goodwin, Weinberg
 Sholkofski, Evers, Wood, Elmore, Baker, Cook, Thomas, Brogan, Bush, Stuht, Caldwell, Boches, Roadhouse
 Taylor, Nordin



MATHEMATICS SOCIETY

Page, B. Chapman, Phelps, Loomis, Williams, Christian, Schack, Johnson, Herrmann
 Merriam, Gendler, Korisko, London
 Rosen, H. Chapman, Carlson, Jones, Beber, Mactier, Ingraham, Mozer, Alloy, Colton, Rice, Feldman
 Bailey, Demorest, Treadwell, Gilmore, Minard, Hertzberg, Baright, Davis, Gilinsky, Ferer
 Nesselson, Stewart
 Ulman, Muller, Turk, Hopkins, Faier, Barson, Leffler, Fredericksen, Koll, Protzman, Lahr, Veitzer



TITIANS

Hanna, Hopkins, Petersen, Dorothy, Schulte, Poole, Ernst, Hultman
 Curry, M. Percival, Gerber, Fesler, Cullingham, Hunter, McKeen, Gray, Johnson
 Brainard, McCumsey, Muller, Mrs. Jensen, Sydow, H. Percival, McLain, Sand, Roadhouse



SPANISH CLUB

Berry, Bush, Hinchcliff, Kohan, Filley, Delaplane, Flynn, Abramanson, Bernstein, Anderson, Denenberg, Abariotes, K. Kirshenbaum, Feldman, Green
 Andre, Lipsey, Davis, Hickman, G. Johnson, Brill, J. Anderson, Landwehrkamp, Hoyer, Fesler, Kelberg, Eustice, N. Dunn, Humlicek, Hutchins, Lincoln, Hagerman
 Bierman, Clinefelter, Cohn, Deible, R. Carlson, Gilmore, Greenberg, Hoffman, Dias, Frazee, Gais, Cahoon, Dustin, Driscoll, B. Dunn, Goll, Bergh
 M. Johnson, P. Kirshenbaum, Ludwig, Colton, Hite, Lefkowitz, Dashiell, Brogan, Koleszar, Cooper, Kulhanek, Hopkins, Lowe, Franco, Cloyd, Curtis, Allen, Bowman, Losch
 Bernstein, Bennett, Cook, Horne, Faier, R. Eastlack, Lueder, Freymann, Carlson, Christian, R. Kulakofsky, Blacker, Edwards, Anania, Harrison, M. Eastlack, Bloom



SPANISH CLUB

Raznick, Rechter, Schneiderman, Shirley, Whited, Young, Rechter, Mangiameli, Forbes, Smith, Lahr, Hoyer, Howell, Nesselson, Olsen
 Samuelson, Moore, Radziner, Pleskoch, Gendler, Leffler, Hopkins, Stryker, Howard, Ruben, Freed, Steinberg, Watkins, Driscoll, Votava
 Nyberg, McBride, Veitzer, Thomas, Moore, Rosenblatt, Searle, White, Stevens, Metcalfe, Miller, Storz, Oakes, Rossiter, McLain
 Robinson, Sconce, Norman, Bock, Loomis, Hickey, Busch, Quinlan, Nelsen, Noble, Staats, Suchan, Ronneau, Eyre, Slater
 Purdham, Albert, Yawitz, Turkel, Bercovici, Cronland, Rice, Peterson, Tesar, Wood, Turk, Snyder, Civin, Meyer, Mendelson



SPANISH CLUB

Cahoon, Nordin, Drake, Haykin, Wilkerson, Baker, Bergers, Tully, Milder, Jack, Runyan, McClellan
 Kountze, Weinstein, Polsky, Kaiman, Resnick, Hickey, Vingers, Nordgren, Stuht, Crowley, Nogg
 Stoklas, Greenberg, Green, Koom, Luttbeg, Marcell, Veight, McFarland, McCready, Whitehead
 Bloom, Macchietto
 Sherman, Hurwich, Sapienza, Plotkin, Mrs. Rosemont, Seig, Schmidt, Neely
 Hesler, Turner, Brookman, Ogden



FRENCH CLUB

Jacobs, Wolfson, D. Miller, Bloomquist, Larson, J. Miller, Bloom, Trabold, Thomas, Davis
 Browning, Magee, Nesselson
 Backstrom, Shick, Hickey, Driscoll, Coulter, Hoekstra, N. Low, Cloyd, Stewart, Turk, Cleary
 Hawkins, P. Low, Allen
 Williams, Rushlau, Jorgensen, Fulloway, Phelps, Redfield, Stryker, Carson
 Mallory, Stuht, Cooper, Kirk, Ries
 Odgen, Legge, Munger, Hickey, Caldwell, Keller, Rosenstock, Wilbourne
 Dawson, Bergh, Curtis, Davis, Smith
 Levenson, Miller, Jepsen, Rosenberg, Hughes, Lower, Swoboda, Miss Bozell
 Sylvester, Cornish, Fogel, Maly, Rosenblatt, Stimson



LATIN CLUB

Harmon, Hickey, Moody, Miller, Seagren, Carlson, Gilinsky, Linsman, Hubbard, Jackman
 G. Lincoln, Feldman, Reis
 Hanger, M. Ulman, Searle, Hite, Low, Catron, Hapke, Redfield, Bergstrom, Whitlock
 Wallace, Schick, Losch, Davis
 Sherman, Lehman, Dudley, Carson, Dawson, Soirof, Martin, Phelps, Thompson
 Reynolds, Robinson, Stimson, Deffenbaugh, Cohn
 Legge, Hawkins, Petricek, Stryker, Beber, Smith, Phelps, Fredericksen, Johnson
 Loomis, Bockes, Caldwell



CHESS CLUB

Lefitz, Filley, Traub, Focht, Carlson, Andre, McGee, Stewart, Allen, Vacek
 Gendler, Richman, Wintroub, Ferer, Leffler, Loomis, Hopkins, Rice, Elmore, Abrahamson
 Mr. Richards, Phelps, Smith, Peterson, Fredrickson, Schack, Koll, Hoyer, Barson, Green



GIRLS' ATHLETIC ASSOCIATION

Radicia, Rank, Morrill, Benson, Edwards, Nelson, Mahaffey, Kittoe, Hansen, Korisko, Moore, Hanseiman
 Baker, Burg, Thomas, Goode, Booth, Turner, Suchan, Ludwig, Gilbert Koopman, Steele
 Hanger, Beard, Curran, Bruett, Consolino, Plotkin, Weir, Wooten, Hunt, Billingsley, Smith
 Anania, Hannibal, Scarpello, McNamara, Sheridan, Barnes, Giannou, Koldborg, Hunter
 Wistedt, Albertson, Shipley
 Moletta, Sholkofski, DeFrance, B. Leibee, Paulsen, Brain, Allyn, Lawson, Hughes, Kahler, D. Leibee



ROLLER SKATING CLUB

Slater, Haines, Mullens, Pospichal, Combine, Cwirko, Biggs, Weaver, O'Grady, Nyberg
 Asplund, Deardorf, Seaglen, Rock, Finch, Burden, Price, Komicki, Wilson, Stoklas
 Behn, Holliday, Greer, Helaney, Slavin, Martin, Shipley, Hubbard, Biggs, Astleford
 Sanders, Zalkin, Hannibal, Stryker, Bacon, Brill, Ferguson, Ronnau, Krupa, Nicholson



O-CLUB

Parker, Minkin, Weekes, Mangiameli, Rotella, Isacson, Mackie, Tamai
 Vacanti, Irvin, Kreitstein
 Meehan, Mancuso, Podruzek, Reese, Swanson, Peterson, Thompson, Steiner
 Dailey, Rosenbloom, Macchietto, Nyberg
 Niess, Mullen, Franks, Lustgarten, Kipling, Smith, Knight, Samuelson
 Dahlgren, Moore, Poyer, Abboud
 Bacon, Schmidt, Allen, Shea, Waldie, Randall, Hovorka, Gorman, Carlson, Berner, Williams
 Wright, Hurd, Beber, Tetrick, Slogr, Quattracchi, Coach Ekfelt, Paulson, Schack
 Boker, Lyle, Slater, Kais

SPORTS REVIEW

Improvement was the keynote of the 1943 football and basketball squads. A young and inexperienced football eleven surprised everyone including themselves as they notched second place in Intercity competition, quite a step from the disappointing squad of the year before. Sorensen's aggregation lost only to South in city play, but Sioux City East and Lincoln Central can also boast of victories over the Eagles.

The same story held true for the basketball squad. With no regulars and only one letterman returning, the outlook was rather dim, but Chick Mancuso and Frank Slogr paced the team to third place in the city with seven wins and five defeats. Coach Ekfelt's wrestlers had little trouble capturing all the mat honors. The bonebenders won the Intercity championship without a defeat and took seven individual crowns to win the state meet. Heavyweight Russ Gorman was the main threat for the Eagles, winning six and losing none.

Spring arrived, and with it came some ups and downs in the sports records. An abundance of sprinters and a fine weight man in John Schmidt made Central one of the strongest track teams in the city. The diamond squad, hampered by early rains and lack of co-ordination, didn't present as good a record, but showed considerable promise. Coach Jim Harris' tennis team again played a clean slate while Tom Shea and Dick Knight were boosting the golf team to a high standing.



FOOTBALL

Tetrick, James, Quattrocchi, Samuelson, Steiner, Fletcher
 Coach Sorensen, Hovarka, Paulsen, Peterson, Lauritsen, Green, D. Gorman, Mr. Knapple
 Swanson, Conley, R. Gorman, Marshall, Abboud, Weekes
 Harriet, J. Mancuso, C. Mancuso, Meehan, Mangiameli, Tamai, Hurd, Brannen



BASKETBALL

Minkin, Lustgarten, Moore, Franks, Wright, Slater, manager
 Shea, Slogr, Havarka, Randall, Samuelson



WRESTLING

Rotella, M. Boker, Beber, Tetrick, R. Gorman, Reese, Parker
Kais, Irvin, Vacanti, Coach Ekfelt, Mackie, Roberts, Kreitstein, Macchietto



BASEBALL

Paletto, Klabunde, Duda, Podrouzek, Stedman, Randall, Reeder, Wood, Wright, Rosen, Mackie, Macchietto
Coach Ekfelt, Meehan, Morgan, Swanson, Slogr, Gorman, Lacy, Belmont, Abboud, Weekes, Tamai



GOLF AND TENNIS

Berner, Graves, Allen, Shea, Waldie, Pisasale, Knight
Zelinsky, Isacson, Lyle, Brownlee, Harris, Crawford



TRACK TEAM

Gray, Buchanan, Wright, Beckman, Fidman, Hurd, Solomon, Owens, Gendler, Cook
Howard, Zajicek, Green, Hollander, Goldstein, Barber, Long, MacCashland, Petrow, Edwards, Hawkins
Forrest, Trimble, Minard, Guggemos, Bergers, Samuelson, Traboe, Robb, Beber, Van Steenburg
Manvitz, Katz, West, Tetrick, Carlson, Hovorka, Berner, Dahlgren, Follmer, Winer
Williams, Pothen, Gilmore, Schmidt, Coach Schmidt, Thompson, Dailey, Brill, Smith Marshall



CHEER LEADERS

Turko, Sponsor H. O. Peterson, Jones
Wolf, Cates, Giannou, De France



BOYS' BOWLING LEAGUE

Weaver, Miller, Beachy, Cwirko, H. Chapman, Koli, Thomas, Cohn, Hawkins, Block, Zorinsky
Veitzer, Swartz, Swancutt, Waldie, Baright, R. Carlson, Schack, B. Chapman, Bock, Parker, Feldman
Niess, Williams, Dahlgren, Berner, Flynn, Olsen, Stern, Pothen, Cobb, Johnson, Christlieb
Kruse, Lepinski, Swenson, Peterson, Sylvester, Freymann, D. Carlson, Mactier, Garon, Harris



Beat 'em!



Red Hot Mamas!



Big Stuff!



So long for a while!



Hut, two, three, four!



Gruesome Twosome



Blow the Man Down

Allah! Be Praised!



"Naturally!"





Ho^x Dogs

S-S-S-Boos



Two's Company



Ahem



Bowang!



Jumpin' Jerks



Four'n One



Bull Session

