

R. GOGOLA
R. MCAYIN

O-BOOK



Central High School

OMAHA, NEBRASKA

VOLUME LIV

1940



MISS SARA VORE TAYLOR

Like half-grown setters new upon the scent
We followed where you called, and felt our blood
Race with the wind, until the firmament
Echoed our shouts of joy, and life was good.
Fortunate souls who strive for such rich quarry,
Who, having heard your quiet hunter's horn,
Can speed across the fields beneath a starry
Heaven, and bring back the unicorn!
So for our children may we do as well,
Now when the world is desolate and bleak
As the moan of sea-wind on a warning bell.
With hearts as firm as yours, with minds intent,
Remembering your spirit, may we speak,
And wake the hounds, and put them on the scent.

— HELENE MAGARET



FRED HILL . . . PRINCIPAL

STAFF

EDITOR-IN-CHIEF

ANNETTE KLEIN

ASSOCIATE EDITORS

ANN DICKINSON
MARIE KNOTT

ASSISTANT EDITORS

MILTON GUSS
RICHARD HOWE
MARTHA MARCHANT
ROSALIE WERTHEIMER

ART EDITORS

SHIRLEY BECK
DORIS DAILARD

BUSINESS MANAGER

YALE RICHARDS

CIRCULATION MANAGER

AL GARROTTO

LITERARY ADVISER

ANNE SAVIDGE

ART ADVISER

MARY ANGOOD

BUSINESS ADVISER

O. J. FRANKLIN

SENIOR CLASS SPONSORS

JULIA CARLSON
EXECUTIVE SPONSOR
BESS BOZELL
GRACE KNOTT
MARGARET MUELLER
FLORENCE ROUSH
J. G. SCHMIDT
DON WARNER

CENTRAL HIGH SCHOOL FACULTY

ANDREW NELSEN
Assistant Principal

FRED HILL
Principal

F. Y. KNAPPLE
Dean of Boys

ENGLISH

Sara Vore Taylor
Bertha Neale
Tillie C. Anderberry
Nell Bridenbaugh
Julia T. Carlson
Josephine Frisbie
Helen L. McCoid
Grace McManus
Margaret A. Mueller
Gretchen Patterson
Frank M. Rice
Helen L. Sommer
Martina Swenson
George W. Thatcher
Augusta Turpin
Ida A. Ward
Alice West

MATHEMATICS

Amanda E. Anderson
G. E. Barnhill
R. B. Bedell
Louis N. Bexten
Maybel Burns
Grace E. Fawthrop
Pearl Judkins
Paul W. Mason

HISTORY

Geneive W. Clark
Irma Costello
Mary E. Elliott
Edith C. Field
Elsie Fisher
Juliette Griffin
Elizabeth Kiewit
Mary A. Parker
Nelle Randall

MODERN LANGUAGES

Bess Bozell
Bernice S. Engle
Lillian Hoegemeyer
May Mahoney
Ruth H. Pilling
Delizia Rindone
Marguerite Rosemont

LATIN

Bernice S. Engle
Josephine Frisbie
Lillian Hoegemeyer
Ruth H. Pilling
Bessie S. Rathbun

PHYSICAL SCIENCE

F. H. Gulgard
J. J. Guenther
J. G. Schmidt

NATURAL SCIENCE

Jennie E. Hultman
Elly M. Jacobsen
Helen C. Lane

SOCIAL SCIENCE

Autumn Davies
Irma Costello
Edith C. Field
F. Y. Knapple

SOCIAL STUDIES

Marguerette R. Burke
Elsie Fisher
Juliette Griffin
Elizabeth Kiewit
Norman L. Sorensen
George W. Thatcher

COMMERCIAL

Edna S. Dana
G. E. Barnhill
Marguerette R. Burke
Ada Ewing
Harriet R. Harris
Esther M. Johnson
Grace M. Knott
Helen L. McCoid
Angeline Tauchen
Don Warner

MUSIC

Elsie Howe Swanson
Irene H. Jensen
Regina Place
Donald E. Libby
Merwin G. Tilton
Thelma M. Stenlund

HOUSEHOLD ARTS

Chloe Stockard
Dorothy Aldrich
Florence C. Roush

STAGE MANAGER

Frank M. Rice

MECHANICAL ARTS

O. J. Franklin
L. W. Buising
F. H. Gulgard

ART

Mary L. Angood
Florence E. Power

EXPRESSION

Myrna Vance Jones
Frances McChesney

PUBLIC SPEAKING AND DEBATE

Myrna Vance Jones
Don Warner

JOURNALISM

Anne L. Savidge

PHYSICAL TRAINING

Allie R. Morrison
Marian Treat

CLASS COUNSELORS

Freshman

Elizabeth Kiewit
Norman L. Sorensen

Sophomore

Josephine Frisbie
George W. Thatcher

Junior

Irene H. Jensen
F. Y. Knapple

Senior

Ruth H. Pilling
J. G. Schmidt

R.O.T.C.

Sergeant L. O. Wyatt
F. H. Gulgard
Faculty Sponsor

SCHOOL TREASURER

O. J. Franklin

LIBRARY

Hazel C. Stewart
Catherine S. Blanchard
Margaret Weymuller

OFFICE

Adrain Westberg
Dorothy Archer
Helen McGinnis

BOOKROOM

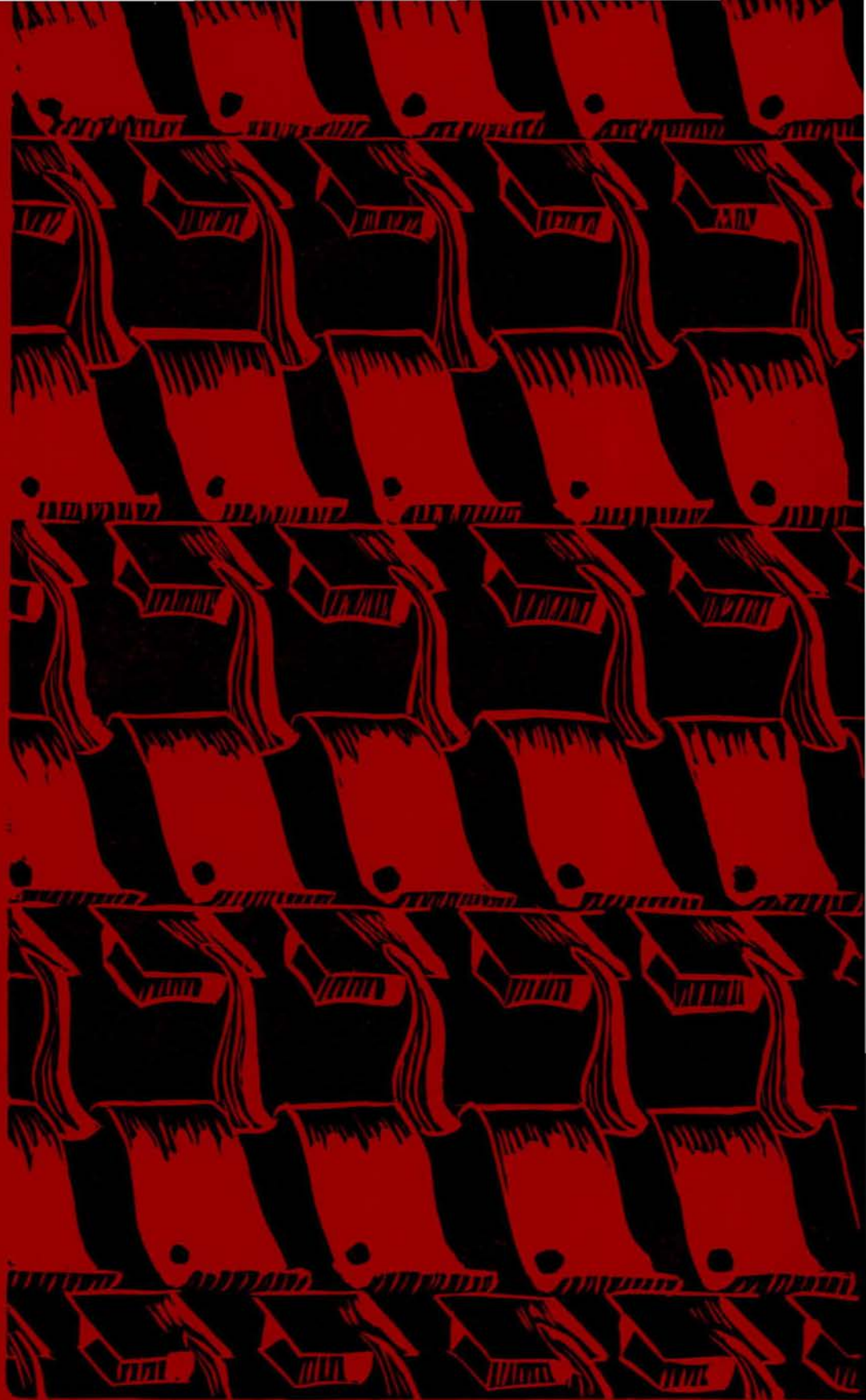
R. B. Bedell
Ida Turco

ATTENDANCE CLERK

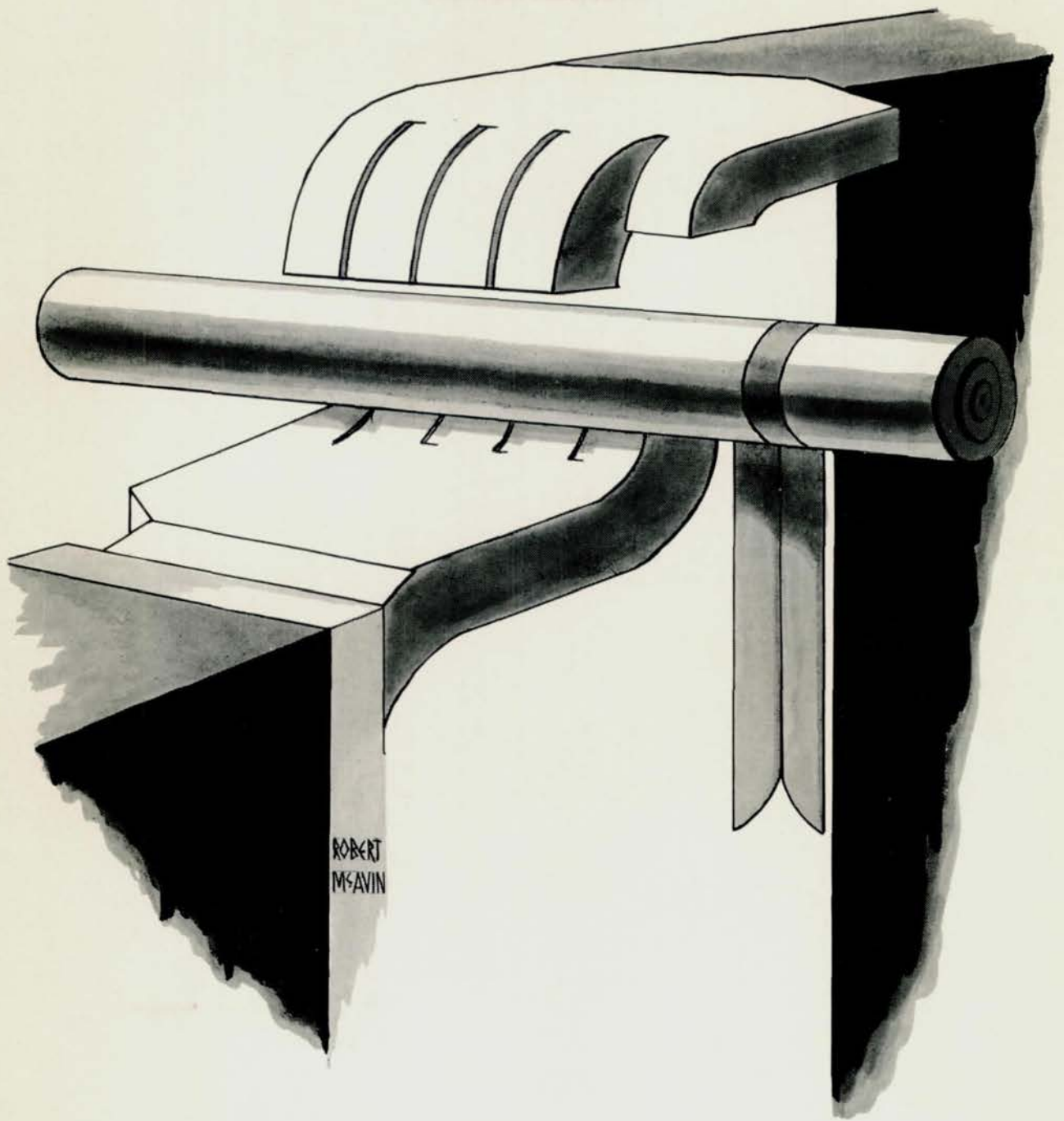
Mildred Goosman

CAFETERIA

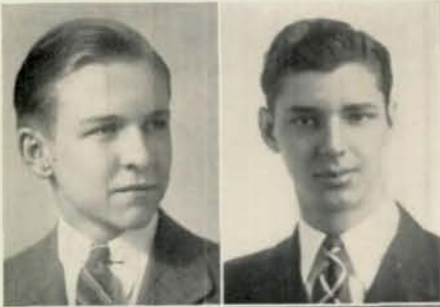
Minnie Nansel







ROBERT
McAVIN

**BILL B. McBRIDE**

National Honor Society

President, June. Register Staff, Assistant Makeup Editor (3,4); Press Club (4); O-Book Circulation (4); State Press Convention (4); A Cappella Choir (2,3,4); Boys' Senior Glee Club (1); Boys' Junior Glee Club (1); Spring Festival (2,3,4); Opera (2,3,4); Road Show (2,3,4); Senior Play (4); Central High Players (4); Central High Players' Play, Business Manager (3); Junior Honor Society (1,2,3); Speakers' Bureau (2,3,4); Student Control (3); Cornhusker Boys' State (2); National Junior Red Cross Convention (2); Junior Red Cross (1,2); President (2); Junior Red Cross Intercity Council, Vice President (2); Hi-Y (4); Cheer Leader (3); Bowling (4)

CHARLES VACANTI

President, January. Orchestra (1,2,3,4); R.O.T.C. Band (1,2,3,4); R. O. T. C. (3,4); Second Lieutenant (4); Road Show (2,3)

MILTON G. PARSONS

Vice President, June. Baseball (1,2,4); Track (1,4); Football (2,3,4); O-Club (2); Senior Play (4); Central High Players (3); Road Show (4); Boys' Senior Glee Club (1,4); Boys' Junior Glee Club (1)

HELEN FINGERET

Secretary, January. Tithans (1,2,3,4); Central Colleens (2); Spanish Club (3); Red Cross (4); Student Control (2,3); Library Monitor (3)

MARJORIE P. JOHNSON

National Honor Society

Secretary, June. O-Book Staff (4); Register Staff (3,4); Press Club (3,4); State Press Convention (4); O-Book Circulation (4); Journalism Session, Northwestern University (3); Quill and Scroll (4); Honorary Colonel (4); Latin Club (2); French Club (3,4); Secretary (4); Lininger Travel Club (2,3,4); Motor Club (3); Student Control (3,4); Junior Red Cross (4); Homeroom Representative (4); Central Colleens (1,2,3,4); Road Show (4)

BETTY GEIFMAN

Treasurer, January. Tithans (1,2,3,4); Colleens (2); Spanish Club (3); Red Cross (4); Student Control (2,3); Library Monitor (3)

HOWARD B. WESTERING

National Honor Society

Treasurer, June. R.O.T.C. (2,3,4); Major (4); S.C.C. (4); Vice President (4); Crack Squad (2,3); Engineers (2); Road Show (2,3,4); Manager (4); Football (1,2,3,4); Track (1); O-Club (2,3); Sergeant at Arms (3); Bowling (3,4); Golf (2,3); Hi-Y, Secretary (4); Mathematics Society (3); Motor Club (1,2); Speakers' Bureau (2); Cornhusker Boys' State (2,3); O-Book Circulation (2,4); Cadet Fire Patrol (4); Register Representative (2); French Club (3)

NED B. EASTLACK

Reporter, June. R.O.T.C. (2,3,4); Band (1,2,3,4); Junior Band (4); Concert Band (2,3,4); S.C.C. (4); Boys' Junior Glee Club (1); State Music Contest (2); Discussion Club (2); Hi-Y (2,3); Mathematics Society (3); Motor Club (4); O-Book Staff (4); Press Club (3,4); Register Staff (4); Quill and Scroll (4); Road Show (1,2,3,4); Senior Play (4); Skating Club (2); Stamp Club (2,3); Student Control (2,3); Tennis (4); Bowling (3,4); Los Sabios (3,4)

MARGARET LOUISE CARLETON

National Honor Society

Sergeant at Arms, June. Student Control (1,2,3,4); District Student Council Convention (3,4); National Student Council Convention (4); Junior Red Cross (3,4); Junior Red Cross Intercity Council (4); Student Council (4); Central Colleens (3,4); Sergeant at Arms (4); Girls' Rifle Team (4); Junior Honor Society (1,2,3); Latin Club (2,3); President (3); Lininger Travel Club (4); Motor Club (4); O-Book Staff (4); Spring Frolic (3,4); Senior Honor Studyhall (4)

J. ALLAN MACTIER

National Honor Society

Sergeant at Arms, June. Register Staff (3,4); Assistant Sports Editor (3); Managing Editor (4); O-Book Circulation (3,4); O-Book Staff (4); Press Club (3,4); Secretary (3); Sergeant at Arms (4); National Scholastic Press Association Convention (4); Journalism Session, Northwestern University (3); State Press Convention (4); Quill and Scroll (4); Road Show (2,3,4); Senior Play (4); R.O.T.C. (2,3,4); First Lieutenant (4); S.C.C. (4); Engineers (2); Track (1,2,3,4); Captain (3); O-Club (3); Athletic Manager (2); Basketball (1); Junior Honor Society (1,3); Central Committee (4); Speakers' Bureau (3); Young Citizens' Contest (4); Cornhusker Boys' State (2); Junior Red Cross (3); Bowling (3,4); Student Council (3,4); Stamp Club, Treasurer (2); French Club (3,4); Register Representative (2,3); Homeroom Representative (4)



ANNETTE KLEIN

National Honor Society

O-Book Staff, Editor-in-Chief (4); Register Staff, Copyreader (4); Press Club (3,4); Purple and White Handbook Staff (4); Quill and Scroll (4); Senior Art Contest (4); Senior Art (4); Art Contest (1,2,3,4); Greenwich Villagers (2,3,4); Scholastic Current Events Contest (4); Central Colleens (3,4); Debate Squad (3,4); Debate Team (4); Declamatory (4); National Forensic League (3,4); Girls' Junior Glee Club (2); Junior Honor Society (1,2,3); French Club (3,4); Student Control (3)

YALE RICHARDS

National Honor Society

O-Book Staff, Business Manager (4); O-Book Circulation (4); Register Staff, Copyreader (4); Purple and White Handbook Staff, Editor (4); Press Club (3,4); Quill and Scroll (4); Debate Squad (2,3,4); Debate Team (2,3,4); Captain (3); Declamatory (3,4); Speakers' Bureau (3); Discussion Club (1,2,3,4); Secretary (2); President (3); National Forensic League (2,3,4); Treasurer (3); Secretary (4); Intercity Debate Championship (3); Junior Honor Society (1,2,3); Register Representative (2,3); Library Monitor (3); Motor Club (3); Senior Play (4); Stamp Club (1); Student Control (2); Bowling (3,4)

ALFRED F. GARROTTO

National Honor Society

O-Book Staff, Circulation Manager (4); Register Staff (3,4); Sports Editor (4); State Press Convention (4); Press Club (3,4); Register Representative (1,2); R.O.T.C. (2,3,4); Captain (4); Engineers, Commander (4); S.C.C. (4); Crack Squad (3); O-Club (1,2,3); Wrestling (1,2); Football (3); Track (1); Road Show (3,4); Motor Club (4); Mathematics Society (2,3); Junior Honor Society (1,3); Commercial Awards (3)

MARIE V. KNOTT

National Honor Society

O-Book Staff, Senior Album Editor (4); O-Book Circulation (3,4); Register Staff (3,4); Associate Editor (4); Press Club (3,4); Quill and Scroll (4); Young Citizens' Contest (4); French Club (3,4); Junior Red Cross (3,4); Senior Homeroom Officer, Vice Chairman (4); Road Show Program, Editor (4); Spring Frolic (1); Girls' Senior Glee Club (2); Girls' Junior Glee Club (1); Spring Festival (1,2); Central High Players (4); Class Officer, Treasurer (1); Junior Honor Society (1,2,3); Latin Awards (3); Lininger Travel Club (1,2,3,4); Sergeant at Arms (4); Motor Club (3); Girls' Pep Club (2); Swimming (1); Student Control (2,4)

ANN DICKINSON

National Honor Society

O-Book Staff, Activities and Honors Editor (4); Register Staff, Editor-in-Chief (4); Press Club (3,4); State Press Convention (4); Purple and White Handbook Staff (4); Quill and Scroll (4); Junior Honor Society (1,3); Latin Awards (3); Music Festival (1); Girls' Junior Glee Club (1); D.A.R. Award (4); Senior Program Committee (4); Central High Players (4); Central Colleens (4); French Club (3,4); Lininger Travel Club (2,3); Speakers' Bureau (3); Spring Frolic (1); Student Control (3)

MARTHA MARCHANT

National Honor Society

O-Book Staff, Associate Editor (4); Register Staff (4); Press Club (3,4); Purple and White Handbook Staff (4); Road Show Program (4); Junior Honor Society (1,2,3); Central Colleens (4); Latin Club (2,3); Lininger Travel Club (4); Los Sabios (3,4); Motor Club (4); Skating Club (3,4); Student Control (2,3); Girls' Rifery (4); Allied Youth (3,4)

RICHARD FARRINGTON HOWE

O-Book Staff, Military Editor (4); Register Staff (4); Press Club (3,4); State Press Convention (4); Purple and White Handbook Staff (4); Quill and Scroll (4); R.O.T.C. (2,3,4); Captain (4); Boys' Rifle Team (2,3,4); S.C.C. (4); Engineers (4); Cadet Fire Patrol (4); French Club (2,3,4); Latin Club (2,3); Senior Play (4); Central High Players (4); Hi-Y (4); Track (3); Student Control (4); Mathematics Society (4); Motor Club (4); Speakers' Bureau (2); Senior Entertainment Committee (4)

MILTON J. GUSS

O-Book Staff, Sports Editor (4); Register Staff, Assistant Sports Editor (4); Purple and White Handbook Staff, Sports Editor (4); Press Club (3,4); Quill and Scroll Awards (4); Scholastic Journalism Contest (4); Debate Squad (3); Declamatory (2); Discussion Club (1,2,3); National Forensic League (2,3); Sergeant at Arms (3); Speakers' Bureau (2); Parliamentary Society, President (4); Oratory Team (4); Library Monitor (3); Los Sabios (3); Motor Club (3); Senior Play (4); Stamp Club (1); Student Control (2); Intramural Sports (1)

SHIRLEY ANN BECK

National Honor Society

O-Book Staff, Art Editor (4); Art Contest (2,3,4); Greenwich Villagers (2,3,4); President (4); Register Staff (3); Central Colleens (1,2,4); Junior Honor Society (3); French Club (3,4); Senior Play (4); Student Control (1,2,3,4)

DORIS ROMAINE DAILARD

O-Book Staff, Art Editor (4); Art Contest (4); Greenwich Villagers, Secretary (4); Senior Play Publicity (4); Register Representative (3); Student Control (2,3); Central Colleens (4); Junior Honor Society (2); French Club (2,3,4); Motor Club (4); Skating Club (3)





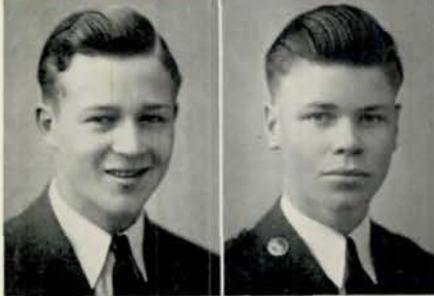
JAMES ELIAS ABBOUD

Wrestling (2,3); Boys' Junior Glee Club (1,2,3)

ROBERT C. AMBERSON

National Honor Society

Football (1,2,3,4); Track (2,3); Basketball (2); Wrestling (3); Intramural Sports (4); O-Club (3); Hi-Y (4); President (4); R.O.T.C. (2,3); Sergeant (3); Engineers (2,3); Mathematics Society (3,4); Vice President (4); Stage Crew (2); Senior Homeroom Officer, Chairman (4)



JAHN C. ANDERSEN

A Cappella Choir (4); Boys' Senior Glee Club (3); Opera (3,4); State Music Contest (2,3,4); National Music Supervisors' Conference (2,3,4); Male Quartette (4); Road Show (3,4); Orchestra (3,4); Football (4); Regiment (3,4); Sergeant (4)

GERALD PHILLIPS ANDERSON

R.O.T.C. (2,3,4); First Lieutenant (4); S.C.C. (4); N.C.O.C. (3); Cadet Fire Patrol (4); A Cappella Choir (2,3,4); Boys' Senior Glee Club (1); Boys' Junior Glee Club (1); Male Quartette (4); National Music Supervisors' Conference (2); Opera (2,3,4); Spring Festival (1,2,3,4); District Music Conference (2,3,4); Basketball, Athletic Manager (3); Hi-Y (3); Hockey (4); Bowling (2,3); Central High Players (4); Senior Play (4); Latin Club (2); Latin Play (2); Los Sabios, Secretary-Treasurer (4); Motor Club (4); Road Show (3,4); Assistant Manager (4); Student Control (4); Student Council, Secretary (4); Register Representative (1); Homeroom Representative (4); O-Book Staff (4); Junior Red Cross (4)



ALICE MARIE ARMINTROUT

Central Colleens (2,4); G.A.A. (4); Motor Club (4); Homeroom Representative (4); Skating Club (3); Student Control (4); Volley Ball (4)

RAY ARTHUR

National Honor Society

R.O.T.C. (2,3,4); First Lieutenant (4); S.C.C. (4); Cadet Fire Patrol (4); N.C.O.C. (3); Crack Squad (3); Engineers (3); Basketball (1,2); Tennis (2,3,4); Track (1,2); Hi-Y (3); O-Club (3); Senior Play (4); Senior Commencement Committee (4); O-Book Staff (4); O-Book Circulation (3); Register Representative (2); Road Show (3,4); Student Control (2,3); Discussion Club (1,2); Mathematics Society (2,3,4); Sergeant at Arms (3); Treasurer (4); Junior Honor Society (1,3)



SAMUEL H. BACHMAN

Wrestling (1,2,3,4); O-Club (1,2,3); Athletic Manager (3)

MARY ANN BAHULA

Central Colleens (3,4); Central High Players (4); Girls' Pep Club (2); Latin Club (1,2); Motor Club (3,4); Skating Club (1,2,3,4); Student Control (2,3,4); Junior Red Cross (4)



WILLIAM EUGENE BAILEY

R.O.T.C. (2,3,4); Second Lieutenant (4); S.C.C. (4); Stamp Club (1,2); Tennis (2); Basketball (1); German Club (1,2); Discussion Club (3)

MARJORIE BAKER

French Club (2); Linger Travel Club (4); Road Show (4); Student Control (4)

BERNICE D. BAKEWELL

Girl Reserves (1,2,3,4); Orchestra (3,4); Road Show (4); Girls' Junior Glee Club (1); Swimming (2); Los Sabios (4); Colleens (3); Skating Club (4)

KEITH BALTZER

Athletic Manager (3); Basketball (1,2); Baseball (1,2,3,4); Hi-Y (2); O-Club (1,2,3); Wrestling (2,3); Intramural Sports (4); Library Monitor (3); Register Representative (2); Skating Club (3); Student Control (4)

HOWARD C. BARISH

Central High Players (1,2,3,4); Business Manager (4); Senior Play Advertising Manager (4); Road Show (4); Register Staff (4); State Press Convention (4); O-Book Advertising Manager (4); R.O.T.C. (2); Mathematics Society (3); Los Sabios (3); Speakers' Bureau (3,4); Stamp Club (3); Student Control (2); Tennis (4); Track (3)

LILLIAN PATRICIA BASL

Baseball (1,4); Basketball (1,4); Volley Ball (1,4); Home Economics (1,2,3,4); Student Control (1,2,3,4); Girl Reserves (1); Skating Club (4)

CASS E. BEAN

R.O.T.C. (2,3); Supply Sergeant (3); Boys' Rifle Team (1,2,3); Motor Club (1,2); Register Representative (3)

MILDRED BURNETTE BEASLEY

National Honor Society

Central High Players (1,2,3,4); Central High Players' Play (3,4); Road Show (1,2,3,4); Senior Play (4); Spring Frolic (1,3,4); Spring Festival (2); Rhythms (1,2,3); Voice (2,3); Girls' Senior Glee Club (3); Girls' Junior Glee Club (1); Central Colleens (2,4); Junior Honor Society (3); French Club (2); Lininger Travel Club (4); Motor Club (4); Register Representative (3); Homeroom Representative (4); Student Control (3,4); Student Council (3); Junior Red Cross (4)

PAULA RUTH BELMONT

Register Staff (4); Press Club (3); State Press Convention (4); A Cappella Choir (2,3); Girls' Senior Glee Club (1); Girls' Junior Glee Club (1); Opera (3); Central Colleens (4); Latin Club (1); Lininger Travel Club (4); Student Control (3,4); Girls' Gym (4); Road Show (4); Spring Frolic (2,3); Homeroom Representative (4)

ARTHUR WILLIAM BENOLKEN

R.O.T.C. (2,3,4); Second Lieutenant (4); Crack Squad (3); S.C.C. (4); R.O.T.C. Circus (3); Boys' Junior Glee Club (1); Register Representative (1); Road Show (3,4)

BEATRICE AUDREY BERKLEY

Baseball (1); Girls' Junior Glee Club (2); Girl Reserves (4); Home Economics (3); Motor Club (2)

JACK L. BERMAN

National Honor Society

R.O.T.C. (2,3,4); First Lieutenant (4); S.C.C. (4); Cadet Fire Patrol (4); Engineers (3); A Cappella Choir (2); Boys' Senior Glee Club (2); Boys' Junior Glee Club (1); National Music Supervisors' Conference (2); Opera (2); Spring Festival (2); Register Staff (3,4); Business Manager (4); Press Club (3,4); State Press Convention (4); Purple & White Handbook Staff (4); O-Book Circulation (3); O-Book Staff (4); Quill and Scroll (4); Junior Honor Society (1,2,3); Discussion Club (2,3,4); President (4); Los Sabios (1,2)





MELVIN BERNSTEIN

Boys' Junior Glee Club (1,2); Motor Club (3,4); Skating Club (1,4), Sargeant at Arms (4); Stamp Club (1); Track (4); Camera Club (4)

SHELDON BERNSTEIN

Basketball (1,2,3,4); Track (1,4); A Cappella Choir (2,3); Boys' Senior Glee Club (1); Boys' Junior Glee Club (1); National Music Supervisors' Conference (2); Register Staff (4), Assistant Circulation Manager (4); Purple and White Handbook Staff (4); Press Club (3,4); Homeroom Representative (4); Discussion Club (2,3,4), Vice President (4); French Club (2); Junior Honor Society (3); Mathematics Society (2); Motor Club (3, 4); Student Control (2); Junior Red Cross (4)



HALE R. BIXBY

R.O.T.C. (2); Boys' Rifle Team (1); Hi-Y (2); Track (3); Bowling (3,4); Cheer Leader (3); Latin Club (1); Library Monitor (3); Monitors' Council (3); Motor Club (2,3); Register Representative (3); State Press Convention (4); Speakers' Bureau (3); Stamp Club (2); Student Control (2,3); Junior Red Cross (4)

ROSE ESTHER BLAZEK

Central High Players (3); Girl Reserves (4); Student Control (4)



FRANK H. BLECHA

Baseball (3,4); R.O.T.C. (3); Student Control (4)

SOPHIE BLUMKIN

Register Staff, Proof Reader (4); State Press Convention (4); Press Club (3,4); O-Book Staff (4); Purple and White Handbook Staff (4); Quill and Scroll (4); Junior Honor Society (1,2,3); Commercial Awards (3,4); Central Colleens (1,3,4); Los Sabios (1); Motor Club (4); Swimming (1); Student Control (2); Skating Club (4); Register Representative (1)



ALYCE L. BOLESKI

Register Staff (4); Press Club (3); Register Representative (3); Student Control (2,3); Commercial Awards (4); Discussion Club (3,4); Greenwich Villagers (4); French Club (3); Motor Club (4)

JOHN A. BORGHOFF

German Club (3,4); Latin Club (3); R.O.T.C. (2); Senior Play (4); Stage Crew (4)



AGNES E. BRANDT

Titians (1,2,3,4); Central Colleens (3,4); Girl Reserves (2,3,4), Treasurer (4); Junior Honor Society (2); Student Control (2,3,4)

ERNEST H. BRITT, JR.

Basketball (1,2,3,4); Football (3,4); O-Club (3); Track (2,3); Hi-Y (4); Boys' Senior Glee Club (3); Boys' Junior Glee Club (2); Spring Festival (3); Speakers' Bureau (4)

PAULINE BRUETT

A Cappella Choir (2,3,4); Girls' Senior Glee Club (1); Girls' Junior Glee Club (1); National Music Supervisors' Conference (2); Opera (2,3,4); Road Show (3,4); State Music Contest (2,3,4); Girls' Quartette (3,4); Spring Festival (1,3,4); District Music Contest (3,4); French Club (3,4); Linger Travel Club (2,3,4); Motor Club (4); Senior Play (4); Student Control (4)

GEORGE MILAND BUFFINGTON

Wrestling (2,3,4); Football (2,3); Regiment (1); Homeroom Representative (4)

JOHN A. BURDEN

A Cappella Choir (3); Boys' Senior Glee Club (2); Boys' Junior Glee Club (1); Spring Festival (2); Regional Music Contest (3); Regiment (1); Basketball (1)

JEANNE MARIE BURKE

National Honor Society

Central High Players (2,3,4); Co-secretary (4); Central High Players' Play (3); Senior Play (4); Spring Frolic (1,4); Miss Central VI (4); Junior Honor Society (1,2,3); Homeroom Representative (4); O-Book Staff (4); Titians (1,2,3,4); Class Officer, Vice President (1); Central Colleens (1,2,3,4); Latin Awards (2,3); French Club (3,4); Treasurer (4); Linger Travel Club (4); Student Control (2); Junior Red Cross (1,4); Road Show (4); Student Council (4)

BARBARA BURNS

National Honor Society

Central Colleens (2,3,4); Central High Players (4); Class Officer, Treasurer (1); Girls' Junior Glee Club (1); Junior Honor Society (1,2,3); Latin Awards (3); Latin Club, Sergeant at Arms (3); Motor Club (3,4); Senior Homeroom Officer, Sergeant at Arms (4); Spring Frolic (1,4); Student Control (2,3,4); Junior Red Cross Intercity Council, Secretary (4); Spring Festival (1); Linger Travel Club (4); Senior Honor Study-hall (4); Senior Play (4)

HARVEY BURSTEIN

National Honor Society

R.O.T.C. (2,3,4), Major, Regiment Supply and Ordnance Officer (4); Military Police Commander (4); Cadet Fire Patrol (4); Engineers (2); Debate Squad (1,2,3,4), Extemporaneous Speaking (2); Debate Team (3,4); Declamatory, Humorous—First Place, District N.F.L.A. (4); Discussion Club (2); National Forensic League (2,3,4), Vice President (4); Junior Honor Society (1,2); Motor Club (3,4); O-Book Staff, Circulation Manager (4); Project Committee (1); Road Show (3,4); Senior Homeroom Officer, Chairman (4); Student Control (2)

DOROTHY JEAN BURTON

National Honor Society

Register Staff (4); Press Club (3,4); O-Book Staff (4); Purple and White Handbook Staff (4); Quill and Scroll (4); A Cappella Choir (3,4); Girls' Senior Glee Club (2); Girls' Junior Glee Club (2); Opera (3,4); Music Festival (3,4); District Music Contest (3,4); Road Show Advertising (4); Junior Honor Society (1,2,3); D.A.R. Award (3); Central Colleens (1,2,3,4); Discussion Club (2); Girls' Rifle Team (4); Latin Club (2,3); Motor Club (4); Skating Club (4); Spring Frolic (4); Student Control (1,2,3,4); Swimming (1); Allied Youth (3,4)

ALICE SABRINA BUTTERWORTH

Central Colleens (3,4); Student Control (1,2)

EILEEN MARGARET BUZBEE

G.A.A. (1,2); Hockey (1); Volley Ball (1); Central Colleens (2,3,4); Motor Club (4); Student Control (3,4); Skating Club (4); Allied Youth (3,4)

SAMUEL S. CAMPAGNA

Football (3,4); Wrestling (2,3,4); O-Club (2,3); Boys' Junior Glee Club (1); Intramural Sports (4)



**ALFRED CANIGLIA**

Football (1,2,3,4); Wrestling (1,2,3,4); O-Club (2,3); Track (1); Basketball (1); Athletic Manager (2)

MARY ELLEN CAREY

Girl Reserves (1,2,3,4); Home Economics (1,2,3,4); Motor Club (2,3)

**MARIE CARLBERG**

National Honor Society

Register Staff, Copyreader (4); Press Club (3,4); Homeroom Representative (4); Central Colleens (2,3,4); Junior Honor Society (1,2,3); Latin Awards (2,3); Latin Club (2,3); Secretary (3); French Club (4); Motor Club (4); Skating Club (1,2,3,4); Student Control (3); Titians (1,2,3,4); Young Citizens' Contest (4); Girls' Pep Club (2)

BERNICE A. CARLSON

A Cappella Choir (3,4); Girls' Senior Glee Club (2); Girls' Junior Glee Club (1); Opera (3); Spring Festival (1,3,4); Commercial Awards (4); Motor Club (4); Student Control (1,3,4)

**GERALD L. CARLSON**

Boys' Senior Glee Club (3); Boys' Junior Glee Club (2)

ALBERTA JANE CARMICHAEL

Central Colleens (3,4); Commercial Awards (3); Girl Reserves (4); Home Economics (1,2); Girls' Pep Club (4); Homeroom Representative (4)

**LEONARD ROBERT CARMICHEAL**

Library Monitor (3); Motor Club (1,2); Intramural Sports (4)

BLAINE CARP

A Cappella Choir (2); Boys' Senior Glee Club (1); Boys' Junior Glee Club (1); Spring Festival (1,2); Central Committee (2,3); Central High Players (2,3); Sergeant at Arms (2); Vice President (3); Central High Players' Play (1,2,3); Cheer Leader (1,2,3); O-Club (3); Tennis (2); Junior Red Cross (1,2,3); Junior Red Cross Council (1,2,3); R.O.T.C. (2)

**PHYLLIS A. CARTER**

A Cappella Choir (3,4); Girls' Senior Glee Club (2); Girls' Junior Glee Club (2); Opera (3,4); State Music Contest (4); District Music Contest (4); Road Show (2,3,4); Spring Frolic (3,4); Student Control (2,3,4); Central Colleens (2); Central Committee (4); Central High Players (4); Senior Play (4); French Club (4); Lininger Travel Club (4); Skating Club (3)

CHARLES O. CARY

Junior Honor Society (1); Mathematics Society (3); Motor Club (1); Register Representative (3); Speakers' Bureau (1)

PAT CATLIN

Registr Staff (4); Press Club (3,4); O-Book Staff (4); Journalism Session, Northwestern University (3); State Press Convention (4); Purple and White Handbook Staff (4); Quill and Scroll (4); Homeroom Representative (4); Road Show (2,3,4); Linger Travel Club (2,3,4); Sergeant at Arms (3); President (4); A Cappella Choir (2); Girls' Senior Glee Club (1); Girls' Junior Glee Club (1); Spring Festival (1); Junior Honor Society (1,2); Junior Red Cross (3,4); Treasurer (4); Student Control (3,4); President (4); Central Colleens (3,4); Senior Play (4); Spring Frolic (4); Senior Popularity Contest Committee (4); Student Council (4)

MELVILLE L. CHALOUPKA

Football (2,3,4); Wrestling (2,3,4); O-Club (3); Track (3,4); Intramural Sports (4); Los Sabios (3)

ZELMA IRENE CHARLTON

Central Colleens (1); Girl Reserves (2); Home Economics (1); Student Control (3); Motor Club (4); Junior Red Cross (4)

SHIRLEY CHASEN

Student Control (1,4); Commercial Awards (4); Central Colleens (4); Girls' Junior Glee Club (3); Junior Honor Society (3); Los Sabios (2); Motor Club (4)

RICHARD B. CHEEK

National Honor Society
R.O.T.C. (2,3,4); Second Lieutenant (4); S.C.C. (4); Road Show (4); Football (1); German Club (2); Junior Red Cross (4)

MARGARET CHLEBORAD

Commercial Awards (3,4); Home Economics (2); Central Colleens (4); Linger Travel Club (4); Motor Club (4); Student Control (3,4); Junior Red Cross (4)

GERALD FREDRICK CHRISTENSEN

Football (4)

GLORIA Y. CHULLINO

Commercial Awards (3,4); Central High Players (1); Motor Club (4); Student Control (4)

MARSA LEE CIVIN

Register Staff (4); Press Club (4); State Press Convention (4); Central Colleens (1,2,3,4); Central High Players (3,4); Senior Play (4); Junior Honor Society (1,3); Los Sabios (1,2); Discussion Club (2,3,4); Student Control (3,4); Motor Club (4); Junior Red Cross (4)

MAX COHEN

R.O.T.C. (2,4); Discussion Club (3); Chess Club (2); Student Control (3)





THEO LLOYD COHN

Student Control (4); R.O.T.C. (2); Skating Club (4); Stamp Club (1); Motor Club (2); Tennis (4); Senior Honor Study Hall (4)

JULIUS MELVIN COHN

Register Staff, Copyreader (4), Rewrite Editor (4); O-Book Staff (4); O-Book Circulation (3,4); Journalism Session, Northwestern University (3); State Press Convention (4); Purple and White Handbook Staff (4); Press Club (3,4); Scholastic Newswriting Contest (4); Quill and Scroll (4); Mathematics Society (2,3); Road Show (4); Senior Play (4); Speakers' Bureau (4); Junior Honor Society (1); Latin Awards (3); Track (3); Regiment (1); Bowling (2); Motor Club (3); Student Control (3); Senior Honor Study Hall (4)

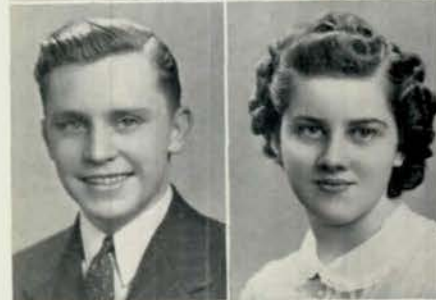


GERALDINE CONLEY

Senior Homeroom Officer, Secretary (4); Central Colleens (2,3,4); Senior Play (4); Central High Players (1,2); Girls' Junior Glee Club (1); French Club (2,3,4); Lininger Travel Club (4); Motor Club (4); Student Control (4); Junior Red Cross (4)

ELIZABETH COSTANZO

Student Control (3); Discussion Club (4); Girl Reserves (4)



EDWIN B. COVERT

National Honor Society
Tennis (3); Track (3); Cheer Leader (4); Motor Club (4); Hi-Y (1,2,3); President (1); Latin Club (2); Latin Play (2); French Club (4); R.O.T.C. (1,2); O-Book Staff (4); State Press Convention (4); Register Representative (1); Road Show (4); Student Control (4); Science Club (3); Junior Red Cross (3,4)

DOROTHY MARGARET CRAFT

Central Colleens (3,4); Motor Club (4); Science Club (3); Skating Club (1); Girls' Junior Glee Club (1); Spring Frolic (1); Register Representative (2,3); Student Control (2,3)



BERNICE CROUSE

Register Staff (4); O-Book Staff (4); O-Book Circulation (4); Press Club (3,4); State Press Convention (4); Purple and White Handbook Staff (4); O-Book Sales Winner (4); Senior Play (4); Central High Players (3,4); National Thespians (4); S.A. Ticket Contest Winner (4); Junior Red Cross (4); Student Control (3,4); Speakers' Bureau (4); Register Representative (2); Homeroom Representative (4); Motor Club (3,4); Las Sabios (1,2,3); Spanish Play (1); Lininger Travel Club (4); Discussion Club (3,4); Secretary (4); Central Colleens (1,2,3,4); Girls' Rifery (3)

BARBARA JEAN CRUISE

Girls' Junior Glee Club (1,4); Home Economics (1,4); Lininger Travel Club (4); Motor Club (4); Skating Club (4); Tennis (1)



MURRAY THOMAS CRUMMER, JR.

Basketball (4); Golf (3,4); Senior Committee (4)

MIRIAM DANSKY

Central Colleens (1,2,3,4); Discussion Club (3); G.A.A. (1); Girls' Sports (1); French Club (1,2); Motor Club (3,4); Press Club (3); Student Control (3); Junior Red Cross (4)

MARY ELLEN DAVIS

National Honor Society
Register Staff (3,4); Press Club (3,4); Purple and White Handbook Staff (4); O-Book Staff (4); Junior Honor Society (1,3); Titans (1,2,3,4); Student Control (2,3,4); Spring Frolic (4); Road Show (4); Central High Players (3,4); Motor Club (3,4); French Club (3); Central Colleens (1); Senior Banquet Committee (4)

THEODORE E. DEAL

Boys' Junior Glee Club (3); Discussion Club (2); R.O.T.C. (2); Student Control (4); Band (4); Road Show (4)

MARJORIE MAY DECKER

Junior Honor Society (1,3); G.A.A. (3,4); Girl Reserves (4); Girls' Junior Glee Club (1,2); Spring Festival (1); Girls' Pep Club (4); Home-room Representative (4); Camera Club (4); Junior Red Cross (4); Student Control (2,3,4); Motor Club (4); Home Economics (3); Latin Club (2); Central Colleens (3,4); Allied Youth (3,4); Senior Play (4)

GEORGE D. DEVEREUX

R.O.T.C. (2,3,4), Captain (4); Boys' Rifle Team (3,4); S.C.C., Sergeant at Arms (4); Crack Squad (2,3); O-Book Staff (4); Road Show (2,3); Register Representative (1); Football (4); Bowling (3,4); Hi-Y (1,2,3); Senior Play (4); Senior Committee (4); Stamp Club (1,2); Speakers' Bureau (2); Latin Club (2); French Club (3); Motor Club (4)

SAM DIAMOND

Football (1,3); Bowling (3,4); Motor Club (3); Student Control (3); Discussion Club (2)

LUCILLE J. DIETER

Girl Reserves (4); Skating Club (4); Student Control (4)

ESTHER ROSE DIMAURO

Girls' Senior Glee Club (1); Girls' Junior Glee Club (1); Student Control (1)

SEBASTIAN J. DISTEFANO

Baseball (1,2,3,4); Basketball (1,2,3,4); Football (3,4); Intramural Sports, Manager (4); O-Club (2,3)

RUTH MAXINE DOHSE

Central Colleens (2,3,4); G.A.A. (1,3); Motor Club (4); Skating Club (4); Student Control (2,3); Allied Youth (3,4)

VIRGINIA M. DOLLY

National Thespians (4); Central High Players (2,3,4), Secretary (4); Central High Players' Plays (3,4); Junior Honor Society (1); Register Staff (4); Press Club (3,4); State Press Convention (4); Purple and White Handbook Staff (4); Senior Play (4); Road Show (4); Student Control Convention (3); G.A.A. (1); Hockey (1); Latin Club (3); Make-Up (4); Motor Club (4); Junior Red Cross (4); Girls' Pep Club (2)





SELMA LORRAINE DREVICH

Senior Play Ticket Committee (4); Home Economics (1); Student Control (1); Volley Ball (1); Spanish Club (1); Science Club (1)

MARGERY ELEANOR DRUIF

National Thespians (3,4); Central High Players (3,4); Junior Honor Society (3); Senior Committee (4); Student Control (4); Central Colleens (4); Commercial Awards (4); Linger Travel Club (4); Skating Club (3)



CHARLES MILOS DUS, JR.

A Cappella Choir (4); Boys' Senior Glee Club (3); Boys' Junior Glee Club (3); State Music Contest (4); Art Contest (4)

JOHN R. DWYER

Track (3); Bowling (3,4); Stage Crew (3); Cheer Leader (4); Regiment (1); Road Show (3); Spanish Play (3); Speakers' Bureau (3); Junior Red Cross (4); Science Club (3)



DOROTHY EDWARDS

A Cappella Choir (4); Central Colleens (4); Skating Club (4)

MARILYN EDWARDS

National Honor Society Register Staff (4); State Press Convention (4); Press Club (3,4); Vice President (4); O-Book Staff (4); Purple and White Handbook Staff (4); Quill and Scroll (4); Central Colleens (1,3,4); Girls' Junior Glee Club (1); Junior Honor Society (3); French Club (3,4); Linger Travel Club (3,4); Motor Club (4); Road Show (4); Senior Play (4); Student Control (3,4); Junior Red Cross, Secretary (4); Senior Committee (4)



ALFRED J. EGGERS, JR.

National Honor Society R.O.T.C. (2,3,4); Major (4); S.C.C. (4); Boys' Rifle Team (3,4); Crack Squad (2); Engineers (3,4); Cadet Fire Patrol, Commander (4); A Cappella Choir (2,4); Boys' Senior Glee Club (1); Boys' Junior Glee Club (1); Opera (2); State Music Contest (2); Basketball (1); Golf (3); Football (1); Hi-Y (3,4); Junior Honor Society (1); Mathematics Society (3,4); President (4); O-Book Staff (4); Road Show (2,4); French Club (3); Project Committee (1); Speakers' Bureau (1); Latin Club (2)

PHILLIP EISENSTATT

Register Staff (4); Press Club (3,4); State Press Convention (4); Junior Honor Society (1,3); Speakers' Bureau (1,3); R.O.T.C. (2); Band (1,2); Mathematics Society (2,3,4); Student Control (2)



RICHARD K. ENOCHSON

R.O.T.C. (2,3,4); Second Lieutenant (4); S.C.C. (4); Crack Squad (3,4); Engineers (3); Cadet Fire Patrol (4); Homeroom Representative (4); Senior Play (4); Senior Play Ticket Committee (4); Road Show (3,4); Intramural Sports (4); Hi-Y (4); Basketball (1); Track (2); French Club (2,3,4); Skating Club (3,4); Student Control (1,2,3); Junior Red Cross (4); Register Representative (2)

GRADY DAVID EPPS, JR.

R.O.T.C. (4); Mathematics Society (4)

IDA D. EPSTEIN

Central Colleens (1,2,3,4); Central High Players (3); Commercial Awards (3); Girls' Junior Glee Club (1); Girl Reserves (2); Motor Club (4); Student Control (2,3,4); Spring Frolic (1); Discussion Club (4)

VIRGENA J. EWING

Girl Reserves (3,4); Secretary (4); Commercial Awards (3); G.A.A. (1); Student Control (2,3,4); Girls' Junior Glee Club (1)

ELAINE FARBER

Senior Homeroom Officer, Sergeant at Arms (4); Road Show (4); Motor Club (3,4); Central Colleens (3,4); French Club (3,4); Linger Travel Club (3,4); Student Control (4); Junior Red Cross (4)

BURKETT FARQUHAR

Register Staff (4); Press Club (4); State Press Convention (4); Quill and Scroll (4); Senior Play (4); Speakers' Bureau (2); French Club (2,3); R.O.T.C. (2); Hi-Y (4); Camera Club (4); Mathematics Society (4); Senior Homeroom Officer, Chairman (4)

KENNETH R. FEE

R.O.T.C. (2,3,4); Sergeant-major (4); S.C.C. (4); Central High Players (4); German Club (4); Skating Club (4)

SHIRLEY FEEKEN

Register Staff (3,4); Press Club (3,4); O-Book Staff (4); State Press Convention (4); Purple and White Handbook Staff (4); Central High Players (3,4); Central High Players' Play (4); Senior Play (4); Junior Honor Society (1,2); Road Show (4); Motor Club (3,4); Secretary (3); Student Control (1,2,3,4); Speakers' Bureau (1); Latin Club (2); Central Colleens (1,2,4); Swimming (1); Junior Red Cross (4); French Club (3); Linger Travel Club (4); G.A.A. (1)

PETER R. FERRYMAN

National Honor Society
Football (1,4); Track (2,3,4); Intramural Sports (4); O-Club (3); Road Show (1,4); Speakers' Bureau (1,2,3); Student Control (3); Senior Play Ticket Committee (4)

MARCIA FINER

National Honor Society
Debate Team (4); Debate Squad (3,4); State Debate Tournament (4); Discussion Club (2,3,4); Sergeant at Arms (4); National Forensic League (4); Register Staff (4); Press Club (4); State Press Convention (4); Junior Honor Society (1,3); Central Colleens (1,2,3,4); Motor Club (4); French Club (1,3); G.A.A. (1); Girls' Senior Glee Club (2); Girls' Junior Glee Club (1); Junior Red Cross (4); Student Control (3,4)

CATHERINE L. FITZPATRICK

Central High Players (2,3,4); Treasurer (4); Central High Players' Play (4); Senior Play (4); National Thespians (4); Make-Up (4); Register Staff (4); Press Club (3,4); State Press Convention (4); Student Control (2,3); Central Colleens (3,4); G.A.A. (1); Volley Ball (1); Girls' Rifle Team (1); Motor Club (4); Linger Travel Club (4); Girls' Pep Club (2); Junior Red Cross (4); Skating Club (2)

RICHARD A. FORCADE

R.O.T.C. (2,3,4); Second Lieutenant (4); S.C.C. (4); Engineers (4); Cadet Fire Patrol (4); Football (2,3,4); Hi-Y (4); Track (1,2,3,4); Basketball (1); Intramural Sports (4); Motor Club (3,4); Vice President (4); Ice Skating Club (4); French Club (4)





FAYE DORRIS FORREST

Art Contest (4); Central High Players' Play (3); Girls' Senior Glee Club (2); Girls' Junior Glee Club (2); Girl Reserves (1,4); Student Control (2,3,4)



TENOLO A. FORT

Hi-Y (4); Library Monitor (3); Speakers' Bureau (3); Student Control (2)



ESTHER S. FOX

Register Staff (4); Press Club (4); State Press Convention (3); Central Colleens (1,2,3); Sergeant at Arms (3); Los Sabios (1,2); Vice President (2); French Club (4); Student Control (3)



JOHN GORDON FREYMAN

National Honor Society

R.O.T.C. (2,3,4); Colonel (4); S.C.C. (4); Cadet Fire Patrol (4); Boys' Rifle Team (2); Crack Squad (3); Central High Players (4); Central High Players' Play (4); Senior Play (4); Hi-Y (2,4); Junior Honor Society (1,2,3); Latin Club (1,2); Latin Play (2); Mathematics Society, Secretary (3); Motor Club (2,3); O-Book Staff (4); O-Book Circulation (4); Road Show (3,4); Speakers' Bureau (2,3,4); Stamp Club (1); Cornhusker Boys' State (3); French Club (3,4); Student Council (3)



GLORIA L. FRIEDMAN

Central Colleens (2,3,4); Commercial Awards (3,4); G.A.A. (1); Los Sabios (1); Motor Club (3,4); Register Representative (2,3); Student Control (2,3,4); Junior Red Cross (4); Senior Committee (4)



EULA N. FRIEND

G.A.A. (2,3,4); Secretary (3); Swimming (1); Skating Club (3,4); Student Control (2,3,4); Central Colleens (3); Latin Club (4); Motor Club (4); Make-Up (4); Junior Red Cross (4)



ALBERT G. FULLER

A Cappella Choir (4); Boys' Senior Glee Club (2,3); Boys' Junior Glee Club (1); Opera (4); Football (2); Skating Club (1,2,3,4); Latin Club (3); Register Representative (1); Road Show (3)



MARY ESTHER FUSTOS

Art Contest (4); Los Sabios (2); Student Control (4); Senior Banquet Committee (4); Girls' Junior Glee Club (1,4)



LESLIE DEAN GATES

National Honor Society

R.O.T.C. (3,4); Second Lieutenant (4); S.C.C. (4); Engineers (4); Military Police (4); Student Control (2,3,4); Skating Club (4); Junior Honor Society (1,2,3); Mathematics Society, Sergeant at Arms (4); Latin Club (2,3); Road Show (3,4); All-City Band (4)



JACK B. GATZEMEYER

National Honor Society

R.O.T.C. (2,3,4); Sergeant (4); S.C.C. (4); Cadet Fire Patrol (4); Military Police (4); Student Control (2,3,4); Skating Club (4); Junior Honor Society (1,2,3); Mathematics Society, Sergeant at Arms (4); Latin Club (2,3); Sergeant at Arms (2); Latin Awards (2,3)

BETTY MARGARET GEORGE

Lining Travel Club (4); Skating Club (3); Student Control (4); Central Committee (4); Senior Committee (4); Commercial Awards (4); Central Colleens (4)

JOHN GLASS

Baseball (1); Basketball (1); Track (3,4); Student Control (3); Motor Club (2); Los Sabios (2); Regiment (1); Boys' Rifle Team (1); Boys' Junior Glee Club (1)

NORMA JEAN GLASSHOFF

Orchestra (1,2,3,4); State Music Contest (1,2); District Music Contest (2); Girls' Senior Glee Club (2); Girls' Junior Glee Club (1); German Club (2,3); Student Control (3,4); Motor Club (4)

WILLIAM A. GODDARD

Register Representative (2,3); Student Control (3); R.O.T.C. (3)

RICHARD V. GOGOLA

Art Contest (3,4); O-Book Staff (4); Boys' Senior Glee Club (2); Boys' Junior Glee Club (1); Spring Festival (2); Speakers' Bureau (3); Stamp Club (2)

LEO A. GOLDSMITH

R.O.T.C. (2,3,4); Sergeant (4); S.C.C. (4); Military Police (4); Junior Honor Society (2,3); Latin Club (2,3); Vice President (3); Mathematics Society, Secretary (4); Bowling (3,4); Captain (4); Student Control (2,3,4); Skating Club (4); Motor Club (4); Library Monitor (2); Junior Red Cross (4)

HARRY GOLDSTEIN

Register Staff (3,4); Circulation Manager (4); O-Book Staff (3,4); O-Book Circulation (3,4); Press Club (3,4); State Press Convention (4); Purple and White Handbook Staff (4); Road Show Advertising (4); R.O.T.C. (2,3); Crack Platoon (2); Project Committee (1,2); Discussion Club (1,2,3,4); Latin Club (2,3); Latin Play (2); Speakers' Bureau (4); Motor Club (2,3); Junior Red Cross (4)

WILLIAM F. GOODWIN

A Cappella Choir (3,4); Boys' Senior Glee Club (2); Boys' Junior Glee Club (1); Opera (4); Road Show (3,4); Central High Players (1,2,3,4); Central High Players' Play (3,4); National Thespians (4); Make-Up (3); Student Control (2); Motor Club (2)

CHARLES WILLIAM GRAHAM

R.O.T.C. (2,3,4); First Lieutenant (4); Boys' Rifle Team (2,3,4); Safety Patrol, Commander (4); S.C.C. (4); Central High Players (4); Hi-Y (2); Motor Club (2,3,4); Orchestra (2,3); Student Control (2,3)

FRED R. GRANDINETTI



**FRANCES P. GRAVES**

Debate Squad (4); Debate Team (4); Girl Reserves (2,3,4), Treasurer (3), President (4); Make-Up (3,4); Motor Club (3); Student Control (3); Tennis (4); Swimming (1); Senior Play Ticket Committee (4)

LOUISE FRANCES GRAY

Girl Reserves (1,2,3,4); Girls' Junior Glee Club (2); Motor Club (4); Tennis (2)

**JIM GREEN**

Central High Players (2,3,4), President (4); Central High Players' Play (3,4); National Thespians (4); Senior Play (4); Road Show (1,2,3,4); Road Show Advertising (3); O-Book Circulation (4); Speakers' Bureau (3,4); Cheer Leaders (3); Discussion Club (3); Hi-Y (2,3), President (2), Treasurer (3); Senior Program Committee (4); Stage Crew (4); Student Control (3,4); R.O.T.C. (2,3); Register Representative (1); Senior Homeroom Officer, Vice Chairman (4); Library Monitor (3); Motor Club (2); French Club (4)

JOYE RUTH GREENBERG

Register Staff (3,4), Advertising Manager (4); O-Book Circulation (3,4); Press Club (3,4); State Press Convention (4); Senior Program Committee (4); Class Officer, Treasurer (1); Central Colleens (1,2,3,4), Treasurer (3); Central High Players (2); Latin Club (3); French Club (3,4); Lininger Travel Club (4); Road Show (2); Student Control (3); Spring Frolic (2,4)

**LEE JANE GREENBERG**

Register Staff (3,4); Press Club (3,4); Quill and Scroll (4); Junior Honor Society (2,3); Student Control (3,4); Central Colleens (2,3,4); French Club (2,3); Lininger Travel Club (4); Mathematics Society (2,3); Motor Club (3); Junior Red Cross (4)

SHIRLEY HARRIET GREENSPAN

A Cappella Choir (2,3,4); Girls' Senior Glee Club (1); Girls' Junior Glee Club (1); National Music Supervisors' Conference (3); Opera (2,3,4); Spring Festival (1,2,3,4); District Music Contest (2,3); Regional Music Contest (4); Central Colleens (3); Commercial Awards (4); French Choir (3); French Club (3); Motor Club (4); Skating Club (3,4), Vice President (4); Student Control (4)

**PHYLLIS E. GRIESS**

A Cappella Choir (2); Girls' Senior Glee Club (1); Girls' Junior Glee Club (1); Lininger Travel Club (3,4), Vice President (4); Central High Players (3); Senior Play (4); Road Show (4); Senior Banquet Committee (4); French Club (3,4), President (4); Junior Red Cross (4); Homeroom Representative (4); Class Officer, Sergeant at Arms (3); Central Colleens (4); Spring Frolic (3,4)

KAY V. GRIFFIN

French Club (2,3); Student Control (2,3); Skating Club (3,4); Latin Club (2); Commercial Awards (3); Motor Club (4)

**JANE LOUISE GRIFFITH**

National Honor Society
Orchestra (1,2,3,4); State Music Contest (1,2,3,4); A Cappella Choir (2, 3, 4); Girls' Junior Glee Club (1); Opera (2, 3, 4); Road Show (1,2,3,4); Junior Honor Society (1,2,3); Register Staff (4); Press Club (3); Central High Players (1,2,3,4); Senior Play (4); Spring Frolic (1,3); Skating Club (2,3,4); Student Control (2); Basketball Queen (1); Girls' Rifle Team (3,4); Speakers' Bureau (3,4); Class Officer, President (1), Sergeant at Arms (3)

MARILYNN GRIFFITH

National Honor Society
Register Staff (4); Press Club (3,4); State Press Convention (4); O-Book Staff (4); Purple and White Handbook Staff (4); O-Book Circulation (4); Quill and Scroll (4); Orchestra (1,2,3), Secretary (3); Concert Band (2,3); State Music Contest (1); Girls' Junior Glee Club (2); Opera (2); Central Colleens (1,2,3,4); Road Show (1,2,3,4); Lininger Travel Club (2,3,4); Junior Honor Society (1,2,3); Skating Club (2,3); Junior Red Cross (3,4); Senior Homeroom Officer, Treasurer (4); Library Monitor (3); Motor Club (3); Senior Play (4); Spring Frolic (2); Class Officer, Sergeant at Arms (2); Senior Committee (4); Student Control (2,3)

PAUL WILLIS HALBROOK

Basketball (1); Football (1); Los Sabios (4)

BETTY JANE HAMMANG

Baseball (1,2,3,4); Basketball (1,2,3,4); G.A.A. (1,2,3,4); Sergeant at Arms (2); Hockey (1,2,3); Volley Ball (1,2,3); A Cappella Choir (4); Girls' Senior Glee Club (3); Girls' Junior Glee Club (2); Student Control (3); Skating Club (4); Make-Up (4)

WALTER C. HAMMOND

Stage Crew (3,4); Regiment (1); Hi-Y (3); Register Representative (3)

RUTH LEE HARRIS

Student Control (2,3); Volley Ball (2,3); Girl Reserves (2,3); Home Economics (2)

ALPHONSO HAYDEN

A Cappella Choir (3,4); Boys' Senior Glee Club (2); Boys' Junior Glee Club (1); Spring Festival (2,3); R.O.T.C. (2); Track (1); Football (3); Basketball (1); Student Control (3); Latin Club (3); Motor Club (4)

RUSSELL HEDRICK

Hi-Y (3); Track (2); French Club (3,4)

DOLORES HELDT

Girls' Senior Glee Club (3); Girls' Junior Glee Club (3); Road Show (2,3,4); Student Control (2,4); Central High Players (3,4); Speakers' Bureau (3); G.A.A. (1)

PERRY B. HENDRICKS, JR.

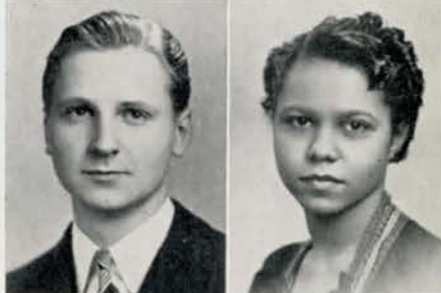
National Honor Society
R.O.T.C. (2,3,4); Captain (4); Silent Squad (3); Silent Platoon, Commander (4); S.C.C. (4); Engineers (3); French Club (2,3); Stamp Club (1,2); O-Book Staff (4); Senior Play, Manager (4); Junior Honor Society (1); Register Representative (3)

HAZEL J. HENRIE

Central Colleens (4); Girls' Junior Glee Club (2); Girl Reserves (4); Home Economics (1,2,4); French Club (3); Library Monitor (3); Girls' Pep Club (4)

GEORGE HENSMAN, JR.

Football (1,3); Wrestling (2); Student Control (1); Skating Club (3); R.O.T.C. (2)





DOROTHY RAE HERZBERG

Register Staff (4); Press Club (4); State Press Convention (4); O-Book Circulation (4); Art Contest (4); Greenwich Villagers (4); Central Colleens (2); Central Committee (3); Lininger Travel Club (4); Skating Club (3); Motor Club (4); Central High Players (4); Senior Play (4); Latin Club (2); Los Sabios (3); Library Monitor (3); G.A.A. (1); Girls' Rifle Team (1); Hockey (1); Volley Ball (1); Basketball (1); Home Economics (3); Student Control (3,4); Junior Red Cross (4); Spring Frolic (4)

LA BRINA HERZOFF

Girls' Senior Glee Club (3); Girls' Junior Glee Club (2); Discussion Club (3); French Club (2,3); Spring Frolic (3)



JOHN H. HICKEY

O-Book Staff (4); O-Book Circulation (4); Junior Honor Society (1,2,3); R.O.T.C. (2); Crack Platoon (2); Hi-Y (2,3); Track (3); Road Show (4); Senior Play Ticket Committee (4); Los Sabios (3); Spanish Play (3); Stage Crew (3); Motor Club (3); Register Representative (1); Science Club (3); Junior Red Cross (3,4); Junior Red Cross Intercity Council (3,4); Vice President (4); Student Control (4); Cheer Leader (3,4); Mathematics Society (2,3); Senior Honor Studyhall (4)

CLARENCE A. HIGLEY

Basketball (1,2,3); Football (1,2); Track (1,2,4); Safety Patrol (3); Student Control (1,2,3); Motor Club (3); Skating Club (1,2,3)



ELAINE HELEN HINCKLEY

G.A.A. (2,3,4); Basketball (2,3); Volley Ball (2,3); Home Economics (4); Motor Club (4); Student Control (4); Junior Red Cross (4)

LOIS ELAINE HINRICHS

Student Control (3,4); District Student Council Convention (3); Junior Honor Society (1,3); Central Colleens (2,3,4); Motor Club (3,4); Junior Red Cross (4); Lininger Travel Club (4); G.A.A. (1); Girls' Rifle Team (1); Spring Frolic (4); Girls' College Club (4)



BEVERLY BURTON HOEKSTRA

Student Control (3,4); District Student Council Convention (3); Central Colleens (2,3,4); French Club (3,4); Lininger Travel Club (4); Junior Red Cross (4); Motor Club (3,4); Skating Club (3); G.A.A. (1); Girls' Rifle Team (1); Girl Reserves (3); Spring Frolic (4); Girls' College Club (4); Senior Honor Studyhall (4)

PEGGY ELIZABETH HOELDOBLER

Central High Players (2,3,4); Central High Players' Play (3); Senior Play (4); Make-Up (3,4); Register Staff (4); Press Club (3,4); Register Representative (1); Central Colleens (1,4); Latin Club (1,2); French Club (3,4); Library Monitor (3); Motor Club (3); Skating Club (1,2,3,4); Student Control (1,2,3,4); Ice Skating Club (1); G.A.A. (1); Rifle Team (2,3,4); Girls' Rifle Team (4)



MALCOLM H. HOLLOWAY

Student Council, Vice President (4); Senior Homeroom Officer, Vice Chairman (4); Senior Program Committee (4); Senior Play (4); Central High Players (3,4); Sergeant at Arms (4); National Thespians (4); Speakers' Bureau (4); Road Show (4); Make-Up (1,2,3,4); Boys' Junior Glee Club (3); Homeroom Representative (4); Skating Club (4); Student Control (4); Junior Red Cross (4); Football (4)

CATHERINE RUTH HOLMAN

A Cappella Choir (2,3,4); Girls' Senior Glee Club (1); Girls' Junior Glee Club (1); Opera (2,3,4); State Music Contest (2,3,4); Central High Players (4); Central High Players' Play (4); Senior Play (4); Speakers' Bureau (3,4); O-Book Circulation (1,2); Central Colleens (1,2,3,4); Central Committee (2,3,4); Lininger Travel Club (1,2,3,4); Motor Club (2,4); Road Show (1,2,3,4); Student Control (4); Girls' Rifle Team (4)

IRENE MARIAN HOLTS

Baseball (1); Girl Reserves (1,2,3,4); Commercial Awards (4)

KATHLEEN HORAN

Girls' Junior Glee Club (1,4); Latin Club (1,2,3); French Club (1,2);
Linger Travel Club (4); Skating Club (1,2); Spring Festival (1,4);
Student Control (3,4)

WILLIAM R. HOSIER

Student Control (4); Camera Club (4)

FRANK EDWARD HRONEK

Baseball (1,2,3); Basketball (1,2,3,4); Bowling (3,4); Football (1,2,
3,4), Captain (4); Golf (4); Track (1,2,3,4); Wrestling (2,3,4);
O-Club (3); Intramural Sports (4); Hi-Y (4); Senior Homeroom Offi-
cer, Sergeant at Arms (4); Student Council, Treasurer (4); Senior
Committee (4); Homeroom Representative (4); Senior Play (4); Cen-
tral High Players (4); Motor Club (3,4); Central Committee (4);
Mathematics Society (2,3,4), Sergeant at Arms (3); Road Show (3,4);
Speakers' Bureau (4); Student Control (2,3,4)

GERALDINE MAE HUBBARD

G.A.A. (1); Tennis (3); Girl Reserves (1); Motor Club (3,4), Secretary
(4); Skating Club (2,3,4); Student Control (2,3,4); Homeroom Rep-
resentative (4); Central Colleens (4); German Club (2,3), Secretary
(3); Home Economics (3); Linger Travel Club (4); Road Show (1);
Junior Red Cross (4)

WESLEY L. HUDSON

Baseball (1); Basketball (2); Hi-Y (3,4); Student Control (3); Boys'
Junior Glee Club (2,3); Track (2,3)

MARY ELIZABETH HUGHES

Register Staff (4); Press Club (4); State Press Convention (4); Central
Colleens (1,2); Central High Players (4); Linger Travel Club (4);
Motor Club (4); Student Control (4); Junior Red Cross (3); Camera
Club (4)

RICHARD J. HULL

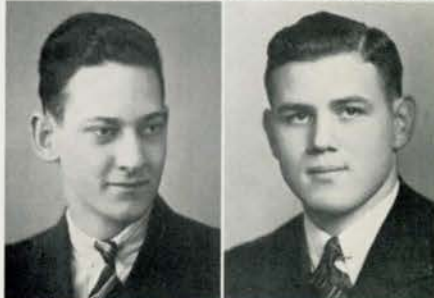
Senior Play Ticket Committee (4); Senior Banquet Ticket Committee
(4); Senior Committee (4); Central High Players (1,2); Discussion
Club (3,4); French Play (4); French Club (3,4); Latin Club (2);
Speakers' Bureau (3); R.O.T.C.

GEORGIANA HULTMAN

A Cappella Choir (3); Girls' Senior Glee Club (2); Girls' Junior Glee
Club (1); Senior Homeroom Officer, Sergeant at Arms (4); Student
Control (3); Central Colleens (4)

JEANNE ELIZABETH HUSTON

Central Colleens (4); French Club (4); Motor Club (4)



**MARY IMOLATI**

Commercial Awards (2,4); Motor Club (4); Student Control (1,3); Senior Honor Studyhall (4)

RENO IMOLATI

Athletic Manager (3,4); Baseball (2,3,4); Intramural Sports (4)

**HOWARD IRELAND**

Latin Club (2,3); Motor Club (3); Register Representative (1,2); Stamp Club (3); Student Control (2,3)

ALAN J. JACOBS

National Honor Society

Register Staff (3,4); News Editor (4); World-Herald Correspondent (3,4); Press Club (3,4); President (4); State Press Convention (3,4); Quill and Scroll (4); Journalism Scholarship, Northwestern University (3); O-Book Staff (4); O-Book Circulation (3,4); Purple and White Handbook Staff (4); Junior Honor Society (1,2,3); Central Committee (3); Mathematics Society (2,3); Motor Club (3); Senior Play (4); Speakers' Bureau (1,3,4); Senior Program Committee (4); Junior Red Cross (3); Bowling (2,4)

**ERNEST JAUL**

R.O.T.C. (3,4); Cadet Fire Patrol (4); S.C.C. (4); Stamp Club (4)

BETTY LOU JENSEN

A Cappella Choir (3,4); Girls' Senior Glee Club (2); Girls' Junior Glee Club (1); Spring Festival (1,2,3,4); Regional Music Contest (4); Opera (3,4); Junior Honor Society (1,2,3); Commercial Awards (4); French Club (1,2); Speakers' Bureau (2,3); French Choir (3); Student Control (4)

**DOROTHY MARIE JENSEN**

A Cappella Choir (2,3,4); Girls' Senior Glee Club (2); Girls' Junior Glee Club (1); Opera (3); National Music Supervisors' Conference (3); Regional Music Contest (4); Road Show (4); Central Colleens (2); Discussion Club (4); Girl Reserves (4); French Club (4); Linger Travel Club (4); Motor Club (4)

KEITH R. JEWELL

R.O.T.C. (3,4); Second Lieutenant (4); S.C.C. (4); Crack Squad (4); Cadet Fire Patrol (4); Central High Players (4); French Play (4); French Club (4); Hi-Y (4); Latin Club (3); Senior Play (4); Road Show (4); Bowling (4); Camera Club (4)

**BETTY JANE JOHNSON**

A Cappella Choir (4); Opera (4); Road Show (4); Band (4); Baton Twirler (4); Student Control (4); German Club (4); Motor Club (4); Commercial Awards (4)

ROBERT ALAN JOHNSON

National Honor Society

A Cappella Choir (4); Boys' Senior Glee Club (2,3); Boys' Junior Glee Club (1); Opera (4); Spring Festival (1,3,4); Regional Music Contest (4); Junior Honor Society (1,2,3); Latin Club (3,4); R.O.T.C. (2,3,4); Sergeant (4); S.C.C. (4); N.C.O.C. (3); Cadet Fire Patrol (4); Science Club (3); Student Control (3,4)

EUGENE P. JORGENSEN

R.O.T.C. (2,3,4); Sergeant (4); Cadet Fire Patrol (4); S.C.C. (4); Boys' Rifle Team (3,4); Art Contest (2)

TOMMY D. KAHLEY

Motor Club (4); Senior Popularity Contest Committee (4)

RICHARD W. KALMANSOHN

National Honor Society
Register Staff, Assistant Sports Editor (4); O-Book Staff (4); Press Club (3,4); Senior Play (4); Junior Honor Society (1,2,3); Discussion Club (4); Latin Club (2,3); Make-Up (4); Motor Club (4); Stamp Club (1); Student Control (3,4); Chess Club (4); Aeronautics Society (4); Science Club (3)

LILLIAN ESTELLE KATZ

Register Staff (4); Press Club (4); Quill and Scroll (4); French Club (2,3); Central Colleens (1,2,3,4); Commercial Awards (4); Discussion Club (4); Girls' Junior Glee Club (1); Lininger Travel Club (4); Motor Club (4)

ORIN J. KAVAN

Student Control (1,2,3); Motor Club (4); Opera (3)

DOROTHY JEAN KAZEROS

Girls' Junior Glee Club (1,2); Spring Festival (2); Junior Honor Society (3); Commercial Awards (3,4); Girl Reserves (4); Central Colleens (4); Student Control (4)

FORREST MYLES KEISTER

R.O.T.C. (3,4); Sergeant (4); S.C.C. (4); Engineers (4); Senior Homeroom Officer, Sergeant at Arms (4); Senior Play (4); Skating Club (4); State Music Contest (1)

RICHARD N. KETELSEN

Basketball (1,2); Football (1,2,4); Intramural Sports (4); Mathematics Society (3)

ALAN B. KIDD

Senior Homeroom Officer, Secretary (4); Motor Club (3,4); Regiment (1); Student Control (4); Hockey (4)

MAX R. KIRSHENBAUM

Press Club (3); Student Control (4); Bicycle Club (4); French Club (4)





MAURICE HIRST KLAIMAN

Register Staff (4); Purple and White Handbook Staff (4); Basketball (1); Central High Players (1); Commercial Awards (4); Debate Squad (2,3); Discussion Club (3,4); President (4); Junior Honor Society (1)

ELLY KOLDBORG

Art Contest (1,4); Greenwich Villagers (4); O-Book Staff (4); Senior Banquet Committee (4)



MORRIS KOLNICK

Discussion Club (1,2,3,4); Motor Club (3,4); Junior Red Cross (1,2,3,4); Junior Red Cross Intercity Council (3); Register Representative (3); Latin Club (3); R.O.T.C. (2); Student Control (2); Stamp Club (1)

MILTON STUART KONECKY

Register Staff (4); O-Book Staff (4); Press Club (3,4); Senior Play Publicity (4); Wrestling (3,4); Intramural Sports (4); Chess Club (2,3,4); Treasurer (4); Chess Team (4); A Cappella Choir (2,3); Boys' Senior Glee Club (1); Boys' Junior Glee Club (1); Spring Festival (1,3); Motor Club (3,4); French Club (3); Latin Club (2)



McKABER PAUL KOORY, JR.

A Cappella Choir (1,2,3); Boys' Junior Glee Club (1); National Music Supervisors' Conference (2); Regional Music Contest (3); Opera (2); R.O.T.C. (2,3,4); Captain (4); S.C.C. (4); N.C.O.C. (3); Latin Club (2,3); Latin Play (2); Project Committee (2); Motor Club (4); Bowling (4); Register Representative (2); Senior Play (4); Cadet Fire Patrol (4)

ANN MARIE KOZIAL

A Cappella Choir (4); Girls' Senior Glee Club (3); Girls' Junior Glee Club (2,3); Opera (4); Spring Festival (3,4); Regional Music Contest (4); Senior Play (4); Central Colleens (2,3,4); G.A.A. (3,4); Girl Reserves (4); Student Control (3,4); Girls' Pep Club (4); Junior Red Cross (4); Camera Club (4); Motor Club (4); Allied Youth (3,4)



EDMOND FRANCIS KREJCI

Road Show (1,2); Band (1,2)

ANNA ANTONIA KUNCL

Motor Club (4); Student Control (4)



CARMELITA A. LARESE

National Honor Society
Junior Honor Society (3); Central Colleens (2,3,4); Art Contest (4); Home Economics (4); Motor Club (2); Skating Club (4); Student Control (3,4); Junior Red Cross (4); Girls' Pep Club (2)

DOROTHY J. LARSEN

Basketball (1,2); Hockey (1); Girls' Junior Glee Club (2); Girl Reserves (2,3,4); Home Economics (1); Motor Club (4); Student Control (4); Volley Ball (1)

MARGIE IMOGENE LARSEN

Junior Honor Society (1,2,3); Girls' Junior Glee Club (1,4); Spring Festival (1,4); Home Economics (2); Student Control (4)

PIERRE C. LAWSON

A Cappella Choir (4); Boys' Senior Glee Club (3); Boys' Junior Glee Club (3); French Club (2,3,4); Orchestra (4); Road Show (4); Student Control (3); Track (3); R.O.T.C. (2); Homeroom Representative (4); Band (4)

JOHN F. LATENSER

Central High Players (4); Central High Players' Play (4); Senior Play (4); Road Show (4); Football (4); Tennis (4); Wrestling (2,3,4); Bowling (3,4); Hi-Y (4); O-Club (3); R.O.T.C. (2,3,4); Second Lieutenant (4); Engineers (3,4); Senior Homeroom Officer, Sergeant at Arms (4); Student Control (4); Motor Club (2)

HARVEY E. LEAF

Athletic Manager (4); Football (3,4); Golf (4); Track (4); Wrestling (3,4); Motor Club (3,4); Student Control (4); Los Sabios (3)

WILLIAM R. LEVINE

Football (1,3,4); Track (2,3,4); Intramural Sports (4); Intercity Ice Carnival (4); Hi-Y (4); Regiment (1)

LEONARD LEWIS

National Honor Society Debate Team (2,3,4), Captain (4); Debate Squad (2,3,4); Declamatory (3,4); National Forensic League (2,3,4); Secretary (3); President (4); Intercity Debate Championship (3); Speakers' Bureau (3); Discussion Club (1,2,3,4); Treasurer (2); Secretary (3); Junior Honor Society (1,2,3); Register Representative (2,3); O-Book Circulation (4); Student Control (2,4); Stamp Club (1); Bowling (3); Library Monitor (3); Motor Club (3)

MARIAN N. LINDEE

National Honor Society Central High Players (3,4); Sergeant at Arms (4); Central High Players' Play (4); National Thespians, Secretary-Treasurer (4); Senior Play (4); Road Show (1,3); Register Representative (3); Make-Up (4); Spring Frolic (1); Football Queen (1); Junior Honor Society (1,2,3); Class Officer, Sergeant at Arms (1); Commercial Awards (4); Student Control (4); Girls' Senior Glee Club (1); Girls' Junior Glee Club (1); Central Colleens (4); Motor Club (4)

EVELYN LUCILLE LOVES

Girl Reserves (1,2,3,4); Home Economics (1,2,4); Girls' Junior Glee Club (4); Motor Club (4)

ERVIN WAYNE LOWERY, JR.

Homeroom Representative (4); Regiment (1); Motor Club (3); Skating Club (3); Student Control (1)

BETTE MARIE LUDACKA

Junior Honor Society (2); Central High Players (1,2); French Club (4); Central Colleens (4); Motor Club (4)



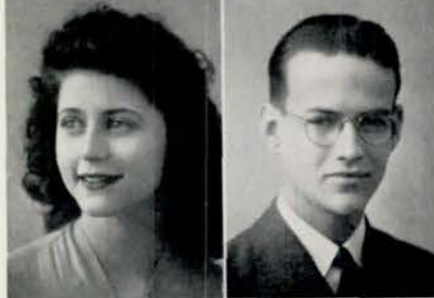


LOUISE MARY LUNDGREN

Student Control (2,3); Girls' Riflery (4); Central Colleens (3); Latin Club (2); Library Monitor (3); Lininger Travel Club (4); Girls' Pep Club (3); Motor Club (4); Senior Play (4); Skating Club (4)

JACQUELINE MAAG

A Cappella Choir (2,3,4); Opera (2,3,4); Road Show (3,4); National Music Supervisors' Conference (2); Regional Music Contest (3,4); Girls' Quartette (3,4); Spring Festival (3,4); District Music Contest (3); Lininger Travel Club (4); Homeroom Representative (4); Student Control (3,4); Spring Frolic (4)



ANASTASIA M. MACCHIETTO

National Honor Society

Junior Honor Society (1,2,3); Central Colleens (2,3,4); Home Economics (4); Motor Club (2); Skating Club (4); Student Control (3,4); Girls' Pep Club (2); Junior Red Cross (4); Art Contest (4)

FRANK S. MACDUFF

R.O.T.C. (2,3,4); First Lieutenant (4); S.C.C. (4); Silent Squad (3); Senior Banquet Committee (4); Hi-Y (4); Stamp Club (2); German Club (2); Motor Club (2,3)



BEVERLY ANN MADSEN

Girls' Senior Glee Club (3); Girls' Junior Glee Club (2); Music Festival (3); Central Colleens (1,4); G.A.A. (1); Spring Frolic (1,2,4); Senior Play (4); Central High Players (4); Central High Players' Play (3); Road Show (1,2,3,4); Homeroom Representative (4); Skating Club (2,3,4); Student Control (2,4); Home Economics (1,2,3)

WILLIAM B. MAGEE

R.O.T.C. (2,3,4); Sergeant (4); S.C.C. (4); Engineers (3); Boys' Rifle Team (4); Cadet Fire Patrol (4); Hi-Y (4); Basketball (1); Track (1,2,3,4); Skating Club (2,3,4); Intramural Sports (4); Student Control (2,3,4)



EDWARD M. MALASHOCK

National Honor Society

Register Staff (3,4); Sports Editor (4); O-Book Staff (4); O-Book Circulation (3,4); Press Club (3,4); State Press Convention (4); Quill and Scroll (4); Journalism Session, Northwestern University (3); Purple and White Handbook Staff (4); R.O.T.C. (2,3,4); First Lieutenant (4); S.C.C. (4); N.C.O.C. (3); Crack Squad (3); Cadet Fire Patrol (4); Junior Honor Society (1,3); Senior Play (4); Senior Picture Committee (4); Road Show (3,4); Speakers' Bureau (4); Homeroom Representative (4); Golf (4); Wrestling (2,3); Bowling (2,4); Mathematics Society (2,3); Sergeant at Arms (3); Student Control (3)

VITA MANGANARO

Girl Reserves (2,3,4); Student Control (3)



MARY A. MANGIAMELI

Central High Players (1,2,3); Commercial Awards (3); Home Economics (3); Girl Reserves (2,3); Motor Club (3); Skating Club (2,3); Student Control (3)

ROBERT F. MARCUM

LEONARD W. MARGULES

Central High Players (4); Senior Play (4); Spanish Play (3); Los Sabios (3); Mathematics Society (3,4), Sergeant at Arms (3), Vice President (4); Motor Club (3,4); Speakers' Bureau (4); Track (1); Wrestling (1); Football (1); Junior Honor Society (3); Safety Patrol (3,4), Lieutenant (4); Student Control (3,4)

RITA L. MARKS

Register Staff, Proof Reader (4); Press Club (3,4); O-Book Staff, Proof Reader (4); Purple and White Handbook Staff (4); State Press Convention (4); A Cappella Choir (2,3); Girls' Senior Glee Club (1); Girls' Junior Glee Club (1); Spring Festival (1,3); Commercial Awards (3,4); Central Colleens (1,2,3,4); Motor Club (4); Skating Club (4); Student Control (2)

JEAN MARIE MARVIN

Latin Club (2,3,4), Secretary (3); Junior Honor Society (1,3); Project Committee (2,3); Student Control (2,3,4); Central Colleens (1,2,3,4); Girls' Pep Club (3)

AVOCA E. MASON

A Cappella Choir (2,3,4); Boys' Senior Glee Club (1); Boys' Junior Glee Club (1); Spring Festival (1,2,3,4); Regional Music Contest (3,4); Junior Band (4); Basketball (1); Football (1,3); Tennis (2); Track (2); Motor Club (2); Junior Red Cross (1)

CLARENCE JOHN MATYA

Boys' Senior Glee Club (4); Boys' Junior Glee Club (2,3)

JOSEPH MAURO

Student Control (4); Register Representative (1,2)

MILLARD LEE MAYHALL

Motor Club, President (4); German Club, Secretary (4); Football (3); Student Control (2,3)

JOSEPH HUGH McCAFFREY

Football (1,3); Track (3)

TERRANCE JOHN McCAFFREY

Monitors' Council (3); Library Monitor (3); Motor Club (1,2); Regiment (1); Student Control (2,3); Project Committee (1)

ALICE H. McCAMPBELL

National Honor Society
Central Committee (3,4); Senior Committee (4); O-Book Circulation (4); Discussion Club (4); Motor Club (4); Lininger Travel Club (3); Junior Red Cross (4); Junior Honor Society (1,2,3); Senior Play (4); Skating Club (3); Student Control (4); Central Colleens (2); G.A.A. (1); Basketball (1); Volley Ball (1); Hockey (1); Girls' Junior Glee Club (2); Senior Honor Study Hall (4)





JOHN A. McCARTHY

R.O.T.C. (2); Crack Platoon (2); Stage Crew (3); Central High Players (3); Road Show (3,4); Track (3); Bowling (4); Hi-Y (3); Press Club (3); O-Book Circulation (3); Register Representative (2); Homeroom Representative (4); Student Control (4); Junior Red Cross Intercity Council (3,4); Latin Club (2,3); Science Club (3); French Club (4); Motor Club (2,3,4)

GUY C. McDONALD, JR.

R.O.T.C. (2,3,4); Supply Sergeant (4); S.C.C. (4); Military Police (4); Cadet Fire Patrol (4); Junior Honor Society (1,3); Motor Club (4)



LEONARD McDONALD

Baseball (1); Basketball (1,2,3); Football (1,2,3,4); Track (1,2,3,4); Wrestling (1,2); Intramural Sports (4); Boys' Senior Glee Club (2); Boys' Junior Glee Club (1); Commercial Awards (2,3); Hi-Y (1,2,3); Library Monitor (2,3); Motor Club (2,3,4); O-Club (1,2,3); Speakers' Bureau (1,2); Student Control (2,3,4); R.O.T.C. (2)

HAMILTON W. McEWAN

R.O.T.C. (2,3); Ice Skating Club (3)



HARRY E. McGEE

Boys' Junior Glee Club (1); Football (1); German Club (4); Los Sabios (3)

MARJORIE McINTYRE

National Honor Society

Junior Honor Society (1,2,3); A Cappella Choir (3); Girls' Senior Glee Club (2); Girls' Junior Glee Club (1); Spring Festival (1,3); Opera (3); Regional Music Conference (3); District Music Contest (3); Latin Club (2); Latin Play (2); Latin Awards (2); Register Staff (4); State Press Convention (4); Press Club (4); Quill and Scroll (4); O-Book Staff (4); Central Colleens (4); Los Sabios (3); Lininger Travel Club (4); French Club (4); Junior Red Cross (4); Senior Play (4); Senior Committee (4); Spring Frolic (4); Motor Club (3,4); Student Control (1,2,3,4); Student Control Convention (3); Homeroom Representative (4)



ELAINE A. MEASE

Girl Reserves (1,4); Volley Ball (1); Motor Club (2); Home Economics (1,2,3)

NATHAN B. MEICHES

Latin Club (2,3); Latin Awards (2); Speakers' Bureau (4); Bowling (3)



LYDIA A. MEIZEN

National Honor Society

A Cappella Choir (3,4); Girls' Senior Glee Club (2); Girls' Junior Glee Club (2); Opera (3,4); Regional Music Contest (3); National Music Supervisors' Conference (3); Student Control (2,3,4); French Club (4); Central Colleens (2,3)

ARTHUR O. MERCER

Register Staff (4); O-Book Staff (4); Purple and White Handbook Staff (4); Quill and Scroll (4); Press Club (3,4); A Cappella Choir (2,3,4); Boys' Senior Glee Club (1); Boys' Junior Glee Club (1); Opera (2,3,4); Male Quartette (4); Regional Music Contest (3,4); Spring Festival (1,2,3,4); Voice (4); Road Show (4); Student Control (3); French Club (3); Latin Club (2); Motor Club (3)

MARIAN FLO MEYER

A Cappella Choir (3,4); Girls' Senior Glee Club (2); Girls' Junior Glee Club (1); Opera (3,4); National Music Supervisors' Conference (2); Regional Music Contest (4); Spring Festival (1,3,4); Register Staff (4); Press Club (4); State Press Convention (4); Purple and White Handbook Staff (4); O-Book Circulation (4); Senior Committee (4); Register Representative (3); Homeroom Representative (4); Junior Red Cross (4); Student Control (2,3,4); Spring Frolic (1,3); Central Colleens (4); French Club (2,3,4); Lininger Travel Club (4); Class Officer, Sergeant at Arms (1); Costumes (3,4); Road Show (3,4)

MARDRI MARIE MILLER

Girls' Senior Glee Club (2,3); Girls' Junior Glee Club (1); Spring Festival (1); Home Economics (2); Latin Club (2); Motor Club (3,4); Student Control (1,2,3,4); Girl Reserves (1,2,3,4)

RUTH MILLER

Central Colleens (2,3,4); Discussion Club (2,3); Motor Club (3,4); Skating Club (3,4); Spring Frolic (3); State Press Convention (4); Student Control (2); Class Officer, Sergeant at Arms (3); Commercial Awards (3,4)

CLYDE MINNIS, JR.

Regiment (1); Football (3); Hi-Y (4); Senior Play (4); Los Sabios (3); Student Control (3); Senior Entertainment Committee (4)

ALICE KAY MONOHON

Girls' Senior Glee Club (3); Student Control (4)

CHARLES F. MOON

R.O.T.C. (2,3); Football (1); Track (2,3); Wrestling (3); Bowling (3); Central High Players (4); Motor Club (2,3); Homeroom Representative (4); Speakers' Bureau (3,4)

JEANNE MILDRED MOORE

Lininger Travel Club (4); Central Colleens (4); Central High Players (4); Latin Club (2); French Club (3,4); Student Control (4); Girl Reserves (1)

LOIS ETHLYN MOORE

Central Colleens (4); Central Committee (2,3,4); Girls' Senior Glee Club (3); Girls' Junior Glee Club (2); Girl Reserves (2,3); Latin Club (1,2); French Club (3,4); Lininger Travel Club (4); Motor Club (4); Register Representative (3); Skating Club (1); State Press Convention (4); Student Control (4); Girls' Rifery (4)

MERCEDES MOORE

Girl Reserves (1,2,3,4); Motor Club (2)

MERIAM JANE MOORE

Road Show (1); Volley Ball (1); Tennis (1); Baseball (1); G.A.A. (2); Motor Club (2)





RALPH L. MOROCCO

R.O.T.C. (2); Speakers' Bureau (4) First Aid (3)

CHARLES H. MORTON

National Honor Society
 R.O.T.C. (2,3,4); First Lieutenant (4); S.C.C. (4); Crack Squad (3);
 Engineers (3); Junior Honor Society (1,3); O-Book Staff (4); Senior
 Play (4); Central High Players (4); French Club (2,3); Stamp Club
 (1,2,3); President (3); Road Show (2,3); Homeroom Representative
 (4); Register Representative (2); Camera Club (4)



MARY MUGASIS

Homeroom Representative (4); Student Control (4); Commercial
 Awards (4); Central Colleens (4); Girl Reserves (4)

FLORENCE ARDELINA MURRELL

A Cappella Choir (3,4); Girls' Senior Glee Club (2); Girls' Junior Glee
 Club (1); Costumes (4); Spring Festival (1,3,4); Girl Reserves (1,2,3,4);
 Homeroom Representative (4); Motor Club (4)



JEANNE ELEANOR NAUMAN

Central Colleens (4); Student Control (4); Home Economics (4)

JOHN LYNN NEAFUS

A Cappella Choir (2,3,4); Boys' Senior Glee Club (1); Boys' Junior
 Glee Club (1); National Music Supervisors' Conference (2); Spring
 Festival (1,3,4); Opera (3,4); Register Staff (4); O-Book Staff (4);
 Press Club (3,4); Baseball (1,2,4); Basketball (2,3,4); Track (3); Hi-Y
 (4); Junior Red Cross (1); Motor Club (4); Homeroom Representative
 (4); Regiment (1)



MARJORIE LOUISE NEGUS

National Honor Society
 Junior Red Cross (3,4); Vice President (3); Junior Red Cross; Intercity
 Council (3); Junior Honor Society (3); Homeroom Representative (4);
 Register Representative (2,3); Road Show (4); Motor Club (3,4); Com-
 mercial Awards (3); Student Control (3,4); French Club (2); Central
 Colleens (3,4); Lininger Travel Club (3,4); Spring Frolic (4)

DOROTHY LUCILLE NELSEN

National Honor Society
 A Cappella Choir (2,3,4); Girls' Senior Glee Club (1); Girls' Junior Glee
 Club (1); Opera (3); Spring Festival (1,2,3,4); National Music Super-
 visors' Conference (2); Regional Music Contest (4); Road Show (3,4);
 Central High Players (4); Central High Players' Play (3); National
 Thespians (4); Senior Play (4); Central Colleens (1,2,3,4); Junior
 Honor Society (3); French Club (2,3,4); Lininger Travel Club (1,2,3,4);
 Motor Club (3,4); Register Representative (3); Speakers' Bureau (4);
 Spring Frolic (3,4); Student Control (2,3,4); Girls' Pep Club (2); Junior
 Red Cross (3,4); O-Book Circulation (3,4); Senior Committee (4)



HELEN D. NELSON

Girls' Senior Glee Club (2); Girls' Junior Glee Club (1); Spring Festival
 (1); Student Control (4); Motor Club (4)

NARAKA ALICE NIESS

Girls' Senior Glee Club (2); Girls' Junior Glee Club (1); German Club
 (4); Girl Reserves (4); Student Control (4); Spring Frolic (1)

DONALD RAY NIPPER

Football (1,2,3); Baseball (1,3); Basketball (1,2); Track (2,3); Bowling (4); Hi-Y (1,4); Wrestling (1); R.O.T.C. (2); Central High Players (4); Spanish Play (2); Library Monitor (3); Student Control (1)

SARAH NOBLE

National Honor Society
Central Colleens (1,2,3,4), Vice President (3), President (4); Junior Honor Society (1,2,3); Latin Awards (2,3); French Club (3,4), Vice President (3,4); Honorary Lieutenant Colonel (4); Central High Players (2,3,4); Central High Players' Play (4); Lininger Travel Club (4); Road Show (3); Senior Homeroom Officer, Chairman (4); Student Control (1,3); Girls' State (3); Junior Red Cross (4); Student Council (3); City Wide Student Council (3); Homeroom Representative (4); O-Book Staff (4); O-Book Circulation (4); Spring Frolic (4)



VIRGINIA MARY NOCITA

Commercial Awards (3); Student Control (4)

NANCY JANE NYGAARD

Basketball (1); Hockey (1); Skating Club (1); Commercial Awards (1,2,3); Central Colleens (4); Motor Club (4); Spring Frolic (4); Student Control (3,4)



ROBERT LEE O'BRIEN

Football (2,3,4); Intramural Sports (4); Library Monitor (3)

NAOMA DOROTHY OKERBLOOM

Latin Club (4); Home Economics (1); Girls' Junior Glee Club (1)



THOMAS G. O'NEILL

French Club (2); Mathematics Society (4); Student Control (4)

JEAN OTT

G.A.A. (1); Girl Reserves (2); Girls' Sports (1); Girls' Pep Club (2); Central High Players (3,4); Road Show (1,3); Spring Frolic (1,3,4); Student Control (3,4)



ELIZABETH OWEN

Central Colleens (3); Lininger Travel Club (3,4); Junior Red Cross, Sergeant at Arms (4); French Club (3,4); Los Sabios (1); Road Show (4); Motor Club (4); Student Control (4)

MILDRED F. PALETTO

National Honor Society
Junior Honor Society (3); Girl Reserves (2,3,4); Home Economics (1,2,3); Girls' Junior Glee Club (1); Spring Festival (1); Swimming (2); Student Control (4)



**DON A. PANSKA**

Boys' Senior Glee Club (3); Boys' Junior Glee Club (2); Voice (4); Los Sabios (4); Library Monitor (2); Senior Play (4); Central High Players (2); Speakers' Bureau (2,4); Track (3)

SOPHIA PARASHUS

Junior Honor Society (1); A Cappella Choir (4); Girls' Junior Glee Club (3); National Music Supervisors' Conference (4); Opera (4); Spring Frolic (4); Lininger Travel Club (4); Junior Red Cross (2); Student Control (3,4); Home Economics (1,2); Central Colleens (2,3,4); Commercial Awards (3,4); Art Contest (1); Skating Club (2,3); Motor Club (3,4)

**JAMES A. PARK**

R.O.T.C. (2,3,4); Sergeant (4); S.C.C. (4); N.C.O.C. (3); German Club, Sergeant at Arms (3); Mathematics Society (3); Motor Club (3); Skating Club (3,4); Senior Play (4)

LA JUANA PATERNO

Baseball (1,2,3,4); Captain (1,2); Basketball (1,2,3,4); Volley Ball (1,2,3); Captain (1,3); Hockey (1,2,3); G.A.A. (1,2,3,4); Sergeant at Arms (2); Treasurer (3); President (4); O-Club; President (4); Skating Club (4); Student Control (2,4); Make-Up (3,4); Girls' Junior Glee Club (2); Spring Frolic (4)

**BETTY J. PATTAVINA**

Spring Frolic (4); G.A.A. (2,3,4); Vice President (3); Skating Club (2,3,4); Student Control (2,3,4); Junior Red Cross (4); Motor Club (4); Make-Up (4); Central Colleens (3); O-Book Circulation (4)

KATHERINE SARAH PAUL

Basketball (1,4); Volley Ball (1,4); Baseball (1); G.A.A. (4); Girl Reserves (4); Motor Club (4); Latin Club (3); Girls' Junior Glee Club (2)

**PEARL MARIE PAYNE**

Central Colleens (1,3,4); G.A.A. (2); Girls' Senior Glee Club (2); Girls' Junior Glee Club (1); Football Queen (3); Latin Club (1); French Club (2); Lininger Travel Club (4); Student Control (2,3,4); Make-Up (2); Motor Club (3,4); Skating Club (3,4); Tennis (3); Junior Red Cross (4)

ROBERT GLENN PEARSON**JACK PECK**

Baseball (1,2,3,4); Football (4); Wrestling (4); Athletic Manager (4); Intramural Sports (4); O-Club (3); Motor Club (3); Safety Patrol (3)

MARY JEANETTE PEGLER

National Honor Society
Junior Honor Society (1,2,3); Central Colleens (1,2,4); Central High Players (2,3); Home Economics (1,2,3,4); Latin Club (2); Lininger Travel Club (4); Motor Club, Sergeant at Arms (4); Road Show (3,4); Speakers' Bureau (3); Student Control (3,4); Baton Twirler (3,4); Swimming (1); Junior Red Cross (4)

ROBERT PERELMAN, JR.

R.O.T.C. (2,3,4); Sergeant (4); S.C.C. (4); French Club (4); Cadet Fire Patrol (4); Skating Club (2,3); Science Club (3)

ESTHER EMILY PETERSEN

Girl Reserves (2,3,4); Vice President (4); Basketball (1,2); Hockey (1); Volley Ball (1,2); Tennis (2); Girls' Rifle Team (2); Motor Club (4); Student Control (4); Girls' Junior Glee Club (2); Home Economics (1)

KATHLEEN JUNE PETERSEN

Girls' Junior Glee Club (1); Spring Festival (1); Voice (4); Central Colleens (3,4); Central High Players (2); Commercial Awards (3); French Club (3,4); French Play (3); Latin Club (2); Motor Club (4); O-Book Staff (4); Register Representative (2,3); Home Economics (1); Junior Honor Society (3); Spring Frolic (1); Student Control (2,3,4); Girls' Riflery (4); Science Club (3); Girls' College Club (4)

ROBERT O. PETERSEN

R.O.T.C. (2,3,4); First Lieutenant (4); Boys' Rifle Team (2,3,4); Manager (4); Girls' Rifle Team, Instructor (4); S.C.C. (4); Engineers (3,4); A Cappella Choir (2,3,4); Madrigal Singers (3,4); Male Quartette (3,4); Male Octette (3,4); Spring Festival (3,4); National Music Supervisors' Conference (2); District Music Contest (3,4); Regional Music Contest (3,4); Opera (2,3,4); Road Show (2,3,4); Bowling (2,3)

WARREN PETERSON

Boys' Junior Glee Club (1); Stamp Club (1)

CLARE F. PHELAN

Student Control (3,4); Motor Club (4); Latin Club (2); Lininger Travel Club (4); Central Colleens (4)

WILLIAM DUNNING PHILBROOK

Track (3); Chess Club (4); French Club (4)

DON A. PICCOLO

JOSEPHINE S. ANNE PICCOLO

G.A.A. (2,3,4); Skating Club (3,4); Make-Up (3,4); Central Colleens (3); Library Monitor (3); Student Control (2,3,4); Homeroom Representative (4)

ARTHUR PINKOVITZ

Debate Squad (2,3,4); Debate Team (4); Discussion Club (1,2,3,4); Speakers' Bureau (1,3); Junior Honor Society (1); Motor Club (4); Senior Play Ticket Committee (4)





PATRICIA M. PITTS

National Honor Society

A Cappella Choir (2,3,4); Girls' Senior Glee Club (1); Girls' Junior Glee Club (1); Opera (2,3,4); National Music Supervisors' Conference (2); Regional Music Contest (3,4); Spring Festival (1,3,4); Road Show (1,2); Junior Honor Society (3); French Club (1,2); French Choir (1,2); Spring Frolic (1); Commercial Awards (3,4)

ROBERT H. PLOSS

R.O.T.C. (2,3,4); Sergeant (4); Crack Squad (3,4); Football (3,4); Golf (4); Hi-Y (2,3,4); Track (2,3,4); Road Show (3,4); Stage Crew (3); Central High Players (4); Latin Club (3); Motor Club (3); Skating Club (3); Student Control (3); Junior Red Cross (3,4); Sergeant at Arms (4)



LOUIS EDGAR PLOTKIN

A Cappella Choir (3,4); Boys' Senior Glee Club (2); Boys' Junior Glee Club (1); Opera (3,4); Regional Music Contest (3,4); Spring Festival (1,3,4); R.O.T.C. (2,3,4); Sergeant (4); S.C.C. (4); Mathematics Society (4); Student Control (4); Cadet Fire Patrol (4); Register Representative (3); Homeroom Representative (4)

NUNCIO ALFRED POMIDORO

Football (1,2,3,4); Track (1,2,3,4); Wrestling (1,2,3,4); O-Club (1,2,3); Vice-President (3); Orchestra (1,2,3,4); President (4); State Music Contest (1,2,3,4); Opera (1,2,3,4); Road Show (1,2,3,4); R.O.T.C. (2,3,4); Captain (4); S.C.C. (4); Boys' State (3); Motor Club (3)



NATALIE A. POMMERENK

Class Officer, Vice President (3); Central High Players (4); German Club (2,3); Secretary (3); Central Colleens (3); State Press Convention (4); Student Control (3,4); Skating Club (1); Junior Red Cross (3,4); Junior Red Cross Intercity Council (3,4); President (4); National Junior Red Cross Convention (3); Spring Frolic (3,4); Motor Club (4); Lininger Travel Club (4); Senior Committee (4); Senior Play (4)

NATALIE PORTER

A Cappella Choir (2,3); Girls' Senior Glee Club (1); Girls' Junior Glee Club (1); Spring Festival (1,2); Central High Players (4); Central High Players' Play (4); National Thespians, President (4); Senior Play (4); Central Colleens (1,2,3,4); Sergeant at Arms (4); Road Show (1,3,4); Student Control (4); Junior Red Cross (4); French Club (3,4); Lininger Travel Club (1,2,3,4); Senior Banquet Committee (4)



ALICE MARLENE POSNER

German Club (1); French Club (3,4); Senior Play (4); Student Control (1,2,4)

DONALD J. POUND

R.O.T.C. (2,3,4); Second Lieutenant (4); S.C.C. (4); Crack Squad (4); Cadet Fire Patrol (4); Track (1,2,3,4); Football (1); Basketball (1); Athletic Manager (1); Hi-Y (4); Intramural Sports (4); Safety Patrol (3); Discussion Club (2,3); Motor Club (3,4); Sergeant at Arms (4); Orchestra (2,3,4); Road Show (2,3,4); Senior Play (4); Skating Club (3); Stamp Club (2); Student Control (2,3); Chess Club (2)



JEAN GORDON PRATT

National Honor Society

O-Book Staff (4); Spring Frolic (4); Lininger Travel Club (1,2,3,4); Road Show (4); Senior Play (4); Central Colleens (3,4); Student Control (3); Girls' Senior Glee Club (1); Girls' Junior Glee Club (1); Central Committee (2,3); Central High Players (3,4); Central High Players' Play, Sales Manager (4); Motor Club (3,4); Junior Red Cross (3,4)

ESTELLE G. RADUZINER

Junior Honor Society (1); Central Colleens (2,3); Commercial Awards (3,4); G.A.A. (1); Motor Club (4); Skating Club (4); Student Control (4)

JANET WELLS RANDALL

National Honor Society
Girls' Senior Glee Club (2); Girls' Junior Glee Club (2); Junior Honor Society (1,2,3); Latin Club; Sergeant at Arms (2); French Club (3,4); Library Monitor (3); Skating Club (3,4); Student Control (3)

KNUD OVE RASMUSSEN

Central High Players (2,3,4); Make-Up (2); Debate Squad (3); German Club (1); Junior Honor Society (3); Regiment (1); Speakers' Bureau (3,4)

FRANCES RAY

Costumes (4); Girl Reserves (4); Skating Club (4)

BEVERLY NELL REED

A Cappella Choir (3); Girls' Senior Glee Club (2); Girls' Junior Glee Club (1); Opera (3); Spring Festival (1); Junior Honor Society (3); Central Colleens (2,3,4); Class Officers, Sergeant at Arms (3); Lininger Travel Club (4); Motor Club (3,4); Road Show (2,3,4); Spring Frolic (3,4); Student Control (2,4); Junior Red Cross (4); Senior Honor Study Hall (4)

ROBERT W. REISSER

A Cappella Choir (2,3,4); Boys' Senior Glee Club (1); Boys' Junior Glee Club (1); National Music Supervisors' Conference (2); Opera (3,4); Regional Music Contest (3,4); Spring Festival (1,2,3,4); Octette (4); Motor Club (4); Regiment (1)

FRANCES DOROTHY RIMERMAN

Junior Honor Society (1,2); French Club (1,2); Central Colleens (1,2,3); Project Committee (2,3); Student Control (2,3,4); Girls' Junior Glee Club (1); Girl Reserves (3,4)

MARJORIE RUTH ROBINSON

O-Book Staff (4); Press Club (4); Register Staff, Copyreader (4); Senior Play (4); National Thespians (4); Road Show (2); Central High Players (2,3,4); Central High Players' Play (3); Junior Honor Society (1,2); French Club (2,3,4); Lininger Travel Club (4); Skating Club (4); Student Control (2); Boule Club, Secretary (2); Central Colleens (1,2,3,4)

RUTH E. ROSENSTEIN

National Honor Society
Register Staff (3,4); Press Club (3,4); State Press Convention (4); Quill and Scroll (4); Class Officer, Secretary (1); Central Colleens (1,2,3,4); Junior Honor Society (3); Senior Banquet Committee (4); Student Control (2,3,4); Greenwich Villagers, Treasurer (4); Latin Club (2); French Club (3,4); Lininger Travel Club (4); Spring Frolic (2); Motor Club (3)

NORMAN PHILIP ROSS

R.O.T.C. (2,3)

ROSE ROTTNER

Central Colleens (1,2); Commercial Awards (4); Los Sabios (2,3); Student Control (2); Science Club (3); Homeroom Representative (4)





JANAAN A. ROWAN

Central Colleens (2,3,4); G.A.A. (1,2); Home Economics (1); French Club (1,2,3); Motor Club (3); Student Control (1,2,3,4); Tennis (1,2)

ELWOOD A. ROWSEY

Debate Squad (4); Debate Team (4); National Forensic League (4); Senior Play Publicity (4); Senior Popularity Contest Committee (4)



MARGARET RUNDALL

National Honor Society

Debate Squad (2,3,4); Debate Team (4); Declamatory (2,4); National Forensic League (2,3,4); Sergeant at Arms (3); Vice President (3); Speakers' Bureau (3,4); Discussion Club (2,3,4); Sergeant at Arms (2,4); Vice President (3); Senior Play (4); Register Staff (3); Press Club (3); O-Book Circulation (3); Girls' Junior Glee Club (1); Spring Festival (1); Junior Honor Society (2,3); Latin Club (2,3); Central Colleens (1,2,3,4); Commercial Awards (3,4); Student Control (1,2,4); Motor Club (2,3,4); Girls' Pep Club (2); Junior Red Cross (3,4); Register Representative (3)

JOHN L. RYAN

R.O.T.C. (2,3,4); First Lieutenant (4); S.C.C. (4); Silent Squad (4); Engineers (3,4); Register Staff (4); Press Club (4); Senior Play Ticket Committee (4); Motor Club (4); Bowling (2,3,4)



ELEANOR E. RYCHLY

Register Staff, Exchange Editor (3,4); Press Club (3,4); Register Representative (2,3); Homeroom Representative (4); Student Control (3,4); Central Colleens (1,2); Home Economics (1); French Club (2)

NANCY MARIE SALERNO

Junior Honor Society (1); Commercial Awards (3); Student Control (1)



INICE LEEVOTA SANDERS

Girls' Junior Glee Club (1); Girl Reserves (1,4); Motor Club (1)

HOMER F. SARGENT

A Cappella Choir (3,4); Boys' Senior Glee Club (2); Boys' Junior Glee Club (2); Discussion Club (3); Football (2,3); Wrestling (1); Hi-Y (1,2); Motor Club (1,2); R.O.T.C. (2); Skating Club (2); Speakers' Bureau (2); Stamp Club (1,2,3); President (3); Student Control (4)



CHARLES F. SCHANTZ

Orchestra (1,2,3); Football (1,2)

MARGERY SCHURMAN

Girls' Senior Glee Club (2); Girls' Junior Glee Club (1); Central Colleens (1); French Club (1); Greenwich Villagers (4); Lininger Travel Club (4); Student Control (4)

SIDNEY M. SCHWARTZ

Register Staff (3,4); Associate Editor (4); Purple and White Hand-book Staff (4); Press Club (3,4); O-Book Staff, Assistant Business Manager (4); O-Book Circulation (3); Quill and Scroll (4); Junior Honor Society (2); Los Sabios (1,2,3); Vice President (3); Spanish Play (2); Senior Play Costume Committee (4); Stage Crew (2,3); Student Control (3); Motor Club (3,4); Boys' Junior Glee Club (2); Football (1); Register Representative (2); Stamp Club (1); R.O.T.C. (2); Bowling (4); Road Show Ticket Chairman (4)

BETTY LOU SCIPLE**FLORA CATHERINE SCOTT**

A Cappella Choir (3,4); Girls' Senior Glee Club (2); Girls' Junior Glee Club (2); Opera (3,4); Register Staff (4); Press Club (3); Class Officer, Vice President (3); Central Colleens (1,3,4); Costumes (3,4); French Club (3,4); Lining Travel Club (4); Mathematics Society (2,3); Motor Club (4); Road Show (3,4); Spring Frolic (3,4); Student Control (4); Senior Play (4)

MARION JEAN SCOTT

Central Colleens (2,3,4); Treasurer (4); G.A.A. (1); French Club (3); Lining Travel Club (4); Stamp Club (1,2); Vice President (2)

RICHARD D. SEAGREN

R.O.T.C. (2,3,4); First Lieutenant (4); S.C.C. (4); N.C.O.C. (3); Military Police, Lieutenant (4); Crack Squad (3); Crack Platoon (2); Cadet Fire Patrol (4); A Cappella Choir (3); Boys' Senior Glee Club (2); Boys' Junior Glee Club (1); Opera (3); Road Show (3); Mathematics Society (3,4); Motor Club (4); Register Representative (1)

SHIRLEY SELLZ

A Cappella Choir (3); Girls' Senior Glee Club (2); Girls' Junior Glee Club (1); Opera (3); Spring Festival (1,3); Commercial Awards (4); Discussion Club (3,4); French Club (3); Register Representative (3); Student Control (2,3); Motor Club (4)

MARY JOAN SHAUGHNESSY

Senior Play (4); Lining Travel Club (3,4); Student Control (2,3); Spring Frolic (1); Motor Club (3,4); Basketball (3); Girls' Pep Club (3); Junior Red Cross (3); Volley Ball (3); Skating Club (4); Girls' Junior Glee Club (1,3); Girls' Riflery (3,4)

VIRGINIA SHURTZ

A Cappella Choir (2,3,4); Girls' Senior Glee Club (1); Girls' Junior Glee Club (1); National Music Supervisors' Conference (2); Regional Music Contest (3,4); Opera (3,4); Spring Festival (1,3,4); Road Show (3,4); Senior Play (4); Greenwich Villagers (2); French Club (3,4); Lining Travel Club (3,4); Motor Club (4); Central Colleens (1); Senior Honor Study Hall (4)

JOHN I. SIBBERNSEN

Golf (4); Hi-Y (3); Stage Crew (4); Motor Club (3,4); R.O.T.C. (2); Register Representative (2,3); Student Control (4); Latin Club (4)

STANLEY C. SILVERMAN

Register Staff (4); Press Club (3); Junior Honor Society (1,2,3); Debate Squad (2); Discussion Club (1,2); Basketball (1); Track (3); Student Control (2,3); Mathematics Society (2,3); R.O.T.C. (2)





SHIRLEY R. SIMON

Central Colleens (1,2,3,4); Commercial Awards (3,4); Girls' Rifle Team (3); Home Economics (1); Los Sabios (2); Motor Club (4)

EDITH LILLIAN SIMPSON

Home Economics (1,2,3); Lininger Travel Club (4); German Club (1); Central Colleens (4); Motor Club (3,4); Skating Club (2,3); Student Control (3,4); Junior Red Cross (4)



ALICE MARIE SINDERGAARD

Home Economics (1,2,3); Girl Reserves (2,3); Girls' Junior Glee Club (4); Speakers' Bureau (4); Student Control (4)

LAZIER L. SINGER

Debate Squad (1,2,3,4); Debate Team (2,3,4); Declamatory (1,2,3,4); National Forensic League (2,3,4); Sergeant at Arms (3); Discussion Club (2,3); Vice President (3); Speakers' Bureau (2,3,4); Intercity Debate Championship (3); Register Staff (4); Press Club (3,4); Purple and White Handbook Staff (4); Senior Play (4); Central High Players (2); National Thespians (4); Spanish Play (2,3); Los Sabios (1,2,3,4); President (3,4); Junior Honor Society (1,2,3); French Club (3); Student Control (1,2,3,4); Library Monitor (3); Motor Club (3); Skating Club (2); Bowling (3)



ROBERT JAMES SISTEK

Latin Club (1); Motor Club (2); R.O.T.C. (2,3,4); S.C.C. (4)

EMILY M. SKIBINSKI

Girl Reserves (4); Motor Club (2)



THERESA SKLAR

Central Colleens (1,2,3,4); Commercial Awards (3); G.A.A. (1); Home Economics (4); Student Control (4)

VIRGINIA ANN SLABAUGH

National Honor Society
A Cappella Choir (2,3,4); Girls' Senior Glee Club (1); Girls' Junior Glee Club (1); Regional Music Contest (3,4); Opera (2,3,4); State Music Contest (4); Spring Festival (1,2,3,4); Road Show (2); Register Staff (4); Press Club (4); Register Representative (1); Student Council (4); Homeroom Representative (4); Class Officer, Sergeant at Arms (1); Art Contest (3); Greenwich Villagers (3); French Club (4); Lininger Travel Club (4); Spring Frolic (1,4)



JAMES HENRY SLATTERY

Central High Players (3); Central High Players' Play (3); Stage Crew (3); Road Show (3,4); Football (4); Track (3); Bowling (4); Hi-Y (3,4); Cheer Leader (4); R.O.T.C. (2); Student Control (3); Science Club (3); Register Representative (2); Senior Play Ticket Committee (4); Motor Club (3); Junior Red Cross (3,4); Aeronautics Society, Sergeant at Arms (4); Senior Honor Study Hall (4)

CHARLOTTE SMITH

A Cappella Choir (2,3,4); Girls' Junior Glee Club (1); Opera (3,4); Girls' Quartette (4); State Music Contest (2); National Music Supervisors' Conference (2); Regional Music Contest (4); Road Show (2,3,4); Spring Festival (1,3,4); Register Staff (4); Press Club (3,4); O-Book Staff (4); Senior Play (4); Spring Frolic (4); Student Council (4); District Student Council Convention (4); National Student Council Convention (4); Junior Red Cross (3,4); Latin Club (2,3); French Club (3,4); Lininger Travel Club (4)

MARGARET ANNE SMITH

Register Staff (3,4); Press Club (3,4); State Press Convention (4); Quill and Scroll (4); O-Book Staff (4); Senior Homeroom Officer, Treasurer (4); Senior Play (4); Junior Honor Society (2); Central Colleens (1,2,3,4); Secretary (4); Spring Frolic (3); Commercial Awards (3,4); Latin Club (2); Library Monitor (2); Lininger Travel Club (2,3,4); Motor Club (2,3,4); Student Control (1,2,3); Girls' Pep Club (3); Junior Red Cross (3,4); O-Book Circulation (4); Science Club (3); Skating Club (2,3)

RICHARD C. SMITH

R.O.T.C. (2,3,4); Second Lieutenant (4); Silent Platoon (4); S.C.C. (4); N.C.O.C. (3); Cadet Fire Patrol (4); Military Police (4); Engineers (4); Junior Honor Society (1,2,3); Skating Club (4); Stamp Club (1)

BELLE FAITHE SOMMER

A Cappella Choir (2,3,4); Girls' Senior Glee Club (2); Girls' Junior Glee Club (1); Opera (3,4); National Music Supervisors' Conference (2); French Choir (2); Spring Festival (1,3); Regional Music Contest (3); Register Staff (4); O-Book Staff (4); Press Club (3,4); Student Control (2,3); French Club (3,4); Junior Honor Society (1,3); Central High Players (3,4); Latin Club (2)

WILLIAM C. SPIER

National Honor Society

R.O.T.C. (2,3,4); Lieutenant Colonel (4); S.C.C. (4); President (4); Crack Squad (3,4); Commander (4); Mathematics Society (3,4); Vice President (3); President (4); Junior Honor Society (1,2,3); French Club (2,3,4); Hi-Y (4); O-Book Staff (4); Register Representative (1); Road Show (3,4); Senior Homeroom Officer, Secretary (4); Student Control (3); Young Citizens' Contest (4); Cornhusker Boys' State (3)

BERNICE M. SPLAWN

A Cappella Choir (3,4); Girls' Senior Glee Club (2); Girls' Junior Glee Club (1); Opera (3,4); French Choir (2); Spring Festival (1,2,3,4); Regional Music Contest (4); French Club (1,2,3); Lininger Travel Club (2,3)

J. ROBERT STEINERT

National Honor Society

R.O.T.C. (2,3,4); Captain (4); S.C.C. (4); Boys' Rifle Team (2,3,4); Captain (4); Engineers (3); Cadet Fire Patrol (4); Junior Honor Society (1,2); German Club (2); Mathematics Society (3); Motor Club (2); O-Book Staff (4); Student Control (2)

DOROTHY M. SWANSON

Class Officer, Sergeant at Arms (1); Girls' Senior Glee Club (1); Home Economics (1); Make-Up (4); Motor Club (4); Skating Club (4); Spring Frolic (1)

JEAN ELIZABETH SWARR

National Honor Society

Register Staff (3,4); Second Page Editor (4); Associate Editor (4); Press Club (3,4); Secretary-Treasurer (4); O-Book Staff (4); State Press Convention (4); Journalism Session, Northwestern University (3); O-Book Circulation (3,4); Quill and Scroll (4); Central High Players (2,3,4); Secretary (3); Central High Players' Play (3); National Thespians (4); Junior Honor Society (1,3); Girls' Junior Glee Club (1); Spring Festival (1); Lininger Travel Club (4); Central Colleens (1,2,3,4); Motor Club (2,3); Skating Club (3); French Club (3,4); Senior Program Committee (4)

EDGAR A. SWOBODA

A Cappella Choir (2,3,4); Boys' Senior Glee Club (1); Boys' Junior Glee Club (1); Spring Festival (1,2,3,4); Regional Music Contest (3,4); National Music Supervisors' Conference (2); Opera (3,4); Regiment (1); Student Control (2)

FLORENCE R. TATELMAN

National Honor Society

Register Staff (4); Press Club (4); Quill and Scroll (4); A Cappella Choir (2,3,4); Girls' Senior Glee Club (1); Girls' Junior Glee Club (1); District Music Contest (3,4); Spring Festival (1,3,4); Girls' Quartette (3,4); Mixed Quartette (3); Opera (2,3,4); Road Show (3,4); Central Colleens (1,2); Central High Players (1); Junior Honor Society (1,2,3); Latin Club (2); French Club (3,4); Skating Club (2,3); Motor Club (4)





BARBARA JOY TAXMAN

Central Colleens (2,3,4); Latin Club (2,3,4); French Club (1,3,4); Sergeant at Arms (3); Lininger Travel Club (4); Motor Club (4); Skating Club (4); Senior Play (4); Senior Committee (4); Student Control (4); Junior Honor Society (1)

PHYLLIS RUTH TETARD

National Honor Society

Register Staff (4); State Press Convention (4); O-Book Staff (4); Press Club (4); Central Colleens (2,3,4); Greenwich Villagers, Vice President (4); Art Contest (4); Junior Red Cross (4); Motor Club (3,4); Junior Honor Society (2,3); Homeroom Representative (4); Student Control (4); Senior Play (4); Girls' Riflery (3); Tennis (2); Swimming (1); Art Contest (4); Senior Banquet Committee (4)



DOROTHY O. THOMAS

Register Staff (4); Press Club (4); State Press Convention (4); O-Book Staff (4); Central Colleens (3,4); Central High Players (4); Motor Club (4); Junior Red Cross (4); Lininger Travel Club (3,4); French Club (4); Speakers' Bureau (4); Senior Play (4); Student Control (3,4); Road Show (3,4); Spring Frolic (4)

GLADYS I. THOMAS

A Cappella Choir (3,4); Girls' Senior Glee Club (2); Girls' Junior Glee Club (1); Opera (3,4); Spring Festival (1,3); Orchestra (1,2,3,4); Vice President (4); Road Show (1,2,3,4); State Music Contest (1,2); G.A.A. (1,2); Girls' Rifle Team (1); Class Officer, Sergeant at Arms (2); Spring Frolic (2); Central Colleens (3,4); Motor Club (4); Skating Club (4); Student Control (4)



BETTY JANE THOMPSON

Register Staff (4); Press Club (4); State Press Convention (4); O-Book Circulation (4); Quill and Scroll (4); A Cappella Choir (2,3,4); Girls' Senior Glee Club (1); Girls' Junior Glee Club (1); Opera (3,4); Road Show (2,3,4); Spring Festival (1,2,4); Regional Music Contest (3,4); National Music Supervisors' Conference (2); Central High Players (4); Costumes (4); Junior Honor Society (1,3); Girls' Riflery (4); Latin Club (2); Lininger Travel Club (4); Central Colleens (2); Motor Club (4); Student Control (3,4); Junior Red Cross (3,4); French Club (3,4); Senior Honor Study Hall (4)

PATRICIA ANN THORNTON

Central Colleens (2,3,4); French Club (2,3); Motor Club (3,4); Student Control (2,3,4); Junior Red Cross (4); Senior Honor Study Hall (4)



PAULINE R. TOMASELLO

Motor Club (4); Student Control (1)

BETTE JAYNE TRAPP

Senior Play (4); Central High Players (4); Girls' Rifle Team (2); G.A.A. (2); Tennis (4); Skating Club (4); Girls' Junior Glee Club (2); Central Colleens (4); Latin Club (2,3); Motor Club (4); Student Control (3,4); Junior Red Cross (4)



VERA LOUISE TRAUB

Central High Players (4); Senior Play (4); State Press Convention (4); Girls' Senior Glee Club (2); Girls' Junior Glee Club (1); Spring Festival (1); Student Control (3,4); Latin Club (2,3); Lininger Travel Club (4); Junior Red Cross (3,4); Junior Red Cross Intercity Council (3)

JENNIE ANN TURCO

Road Show (2); Student Control (1)

RALPH GEORGE TURKEL

Baseball (1,2); Basketball (1,2); Motor Club (4); Student Control (4); Camera Club (4)

FLORENTINE ALTHEDA TURNER

Girl Reserves (2,3,4); Home Economics (2); Student Control (3)

LUCILLE MARIE URATA

Girl Reserves (2); Home Economics (3); Commercial Awards (4); Homeroom Representative (4)

MARY ROSE VACANTI

Commercial Awards (3,4); Student Control (3,4)

NUNZIO J. VACCARO

A Cappella Choir (4); Boys' Senior Glee Club (2,3); Boys' Junior Glee Club (1); Spring Festival (1,3,4); Opera (4); Regional Music Contest (4); Central High Players (3); Senior Play (4); Road Show (3); Stage Crew (4); Speakers' Bureau (3); Discussion Club (3); Regiment (1); Motor Club (3,4); Treasurer (3); Student Control (3); Safety Patrol (3,4); Inter-High School Safety Council (3); Skating Club (3)

MARIE FRANCES VACULIK

Home Economics (2,3,4); Motor Club (4); Student Control (2,3)

HELEN VAJGRT

Girls' Junior Glee Club (1); Spring Festival (1); German Club (4); Girl Reserves (4); Motor Club (4); Student Control (3,4)

J. EARL VANDAGRIFF

Tennis (4)

FAITH ELIZABETH VANDAGRIFF

Senior Play (4); French Club (4); Speakers' Bureau (4)

LUCILE ANN VIRGILLITO

Girl Reserves (4); G.A.A. (2); Student Control (3,4)





BETTY LOU WAECHTER

French Club (1); Lininger Travel Club (1); Los Sabios (1); Student Control (1)

EILEEN CECILIA WAINWRIGHT

Register Staff (4); Press Club, Sergeant at Arms (4); O-Book Staff (4); O-Book Circulation (2,3); Central High Players (4); Senior Play (4); French Club (2,3,4), Sergeant at Arms (4); Lininger Travel Club (3,4), Sergeant at Arms (4); Central Colleens (3,4); Speakers' Bureau (4); Road Show (2,3,4); Motor Club (2,3,4); Student Control (2,3); Junior Red Cross (3,4); Spring Frolic (4)



DONNIS BEVERLY WALTON

Central Colleens (2,3,4); French Club (4); Los Sabios (4); Motor Club (4); Student Control (2,3,4)

DE ETTA GERTRUDE WARE

Central Colleens (1,2); G.A.A. (2); Girl Reserves (1,2,3,4); Golf (1); Motor Club (4); Senior Play (4); Student Control (3); Homeroom Representative (4); Girls' Junior Glee Club (2); Home Economics (2,3,4)



ALEX WEINSTEIN

Art Contest (3,4); Senior Art (4); O-Book Staff (4); Athletic Manager (4); Junior Honor Society (1,2,3); Mathematics Society (2,3,4); Track (3,4); Student Control (2,3); Motor Club (4); French Club (3)

VIRGINIA K. WEIR

A Cappella Choir (2); Girls' Senior Glee Club (2); Girls' Junior Glee Club (1); Road Show (2); German Club (3,4); Secretary (3); Sergeant at Arms (4); Student Control (2,3,4); Home Economics (2,4); Skating Club (3); Central Colleens (1); G.A.A. (1); Volley Ball (3)

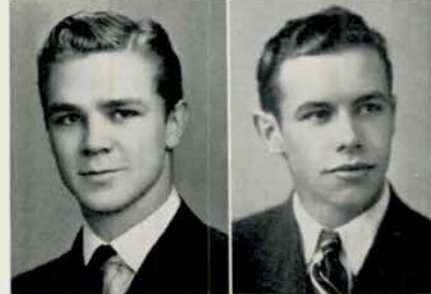


SIDNEY WEISMAN

Orchestra (2,3,4); Treasurer (4); Road Show (3,4); District Music Contest (2); Basketball (2,3); Hi-Y (3); Track (4); R.O.T.C. (2); Discussion Club (3)

JAMES A. WELLS

Baseball (1); Basketball (1); Football (1,4); Golf (4); Track (1,2); Hi-Y (4); Debate Squad (2); Stage Crew (2,3,4); Costumes (4); Mathematics Society (3); Motor Club (3,4); Student Control (4)



LOUIS WELLS

National Honor Society
A Cappella Choir (2,3,4); Boys' Senior Glee Club (1); Boys' Junior Glee Club (1); Male Quartette (3,4); National Music Supervisors' Conference (2); Opera (2,3,4); State Music Contest (2); Regional Music Contest (3,4); Spring Festival (1,3,4); Male Octette (4); Road Show (2,3,4); Football (1,2,3,4); Baseball (2); Basketball (1,2,3); Golf (3,4); Track (1,2); Hi-Y (4); O-Club (2,3); Cornhusker Boys' State (3); Bowling (3); French Club (2,3,4)

RALPH KENNETH WEMMER

Skating Club (3,4); Treasurer (3); President (4); Library Monitor (3); Regiment (1)

LORRAINE J. WENNINGHOFF

Art Contest (3,4); O-Book Staff (4); Commercial Awards (2); Girl Reserves (1,2,3,4); Secretary (1); Student Control (4)

ROSALIE MAY WERTHEIMER

National Honor Society

A Cappella Choir (3,4); Girls' Senior Glee Club (2); Girls' Junior Glee Club (1); Girls' Quartette (3,4); Regional Music Contest (3,4); Opera (3,4); Road Show (3,4); Spring Festival (1,3,4); State Music Contest (3,4); O-Book Staff, Picture Editor (4); Student Control (1,2,3); Junior Honor Society (1,2,3); French Choir (2); French Club (2,3,4); Register Representative (1,3); Motor Club (4); Skating Club (3,4); Central High Players (2); Central Colleens (1); Homeroom Representative (4)



WILLIAM R. WHEELER

R.O.T.C. (2,3,4), Captain and Regimental Adjutant (4); S.C.C. (4); Secretary-Treasurer (4); Basketball (1,2); Football (1,2,3); Ice Skating (4)

JAMES WHETSTONE

Student Control (2,3,4); Football (3)



LUTIE WHETSTONE

National Honor Society

Titians (1,2,3,4); Student Control (1,2,3,4); Motor Club (4); Project Committee, Secretary (2); Spring Frolic (4)

DOROTHE WHITE

Girls' Senior Glee Club (2); Girls' Junior Glee Club (1); Home Economics (1,2,3,4); Student Control (1,2,3,4); Library Monitor (3); Basketball (1); Motor Club (4); Homeroom Representative (4); Junior Red Cross, Secretary (1)



ANN HARRIET WIESMAN

G.A.A. (1,2,3,4); Basketball (1,3,4); Baseball (1,2,4); Hockey (1,2); Tennis (2,3,4); Volley Ball (2,3,4); Ping Pong (2,3,4); Girls' Pep Club (3,4); O-Club (3,4); Girl Reserves (1,2,3,4); Home Economics (1,2,3,4); Student Control (1,2,3,4); Central High Players (2,3,4); Register Representative (1,2,3); Speakers' Bureau (3,4); Senior Play (4); Junior Red Cross (4); Discussion Club (3,4); Vice President (4); Motor Club (2,3,4); Central Colleens (4); Linger Travel Club (3,4)

QUENTIN JERRY WILDMAN



BETTY ANN WILKERSON

Register Staff (4); O-Book Staff (4); Press Club (4); Central High Players (3,4); Greenwich Villagers (2); Linger Travel Club (4); French Club (4); Motor Club (4); Junior Red Cross (3); Press Club (4); Senior Play (4); Student Control (2,3); Junior Honor Society (1)

BEVERLY BAIRD WILLIAMS

Student Control (1,2,3); Senior Committee (4); Central High Players (3,4); Library Monitor (3)





KENNETH L. WILLMARTH
Register Cartoonist (3,4)

HELNE S. WOHLNER

Central Colleens (1,2,3,4); Lininger Travel Club (4); Los Sabios (3); Motor Club (3); French Club (1,2); Register Staff (4); State Press Convention (4); Press Club (4); Student Control (3,4); Register Representative (2); Girls' Junior Glee Club (1); Orchestra (1)



SARA JOYCE WOLFSON

National Honor Society

Central Colleens (1,2,3,4); Student Control (1,2,3,4); Junior Honor Society (1,2,3); Commercial Awards (4); Los Sabios (2,3); Motor Club (4)

EVELYN WOLK

Central High Players (2); Discussion Club (3,4); Motor Club (4); Skating Club (4); Student Control (3,4)



GLORIA L. WOLK

Central High Players (2); Discussion Club (3,4); Motor Club (4); Skating Club (4); Student Control (3); Homeroom Representative (4)

ROBERT LINCOLN WOMACQUE

A Cappella Choir (4); Boys' Junior Glee Club (4); Student Control (1,2,3); Basketball (1); Hi-Y (3); Library Monitor (2); Central High Players (4)



JACQUELINE WOODHOUSE

National Honor Society

A Cappella Choir (2); Girls' Senior Glee Club (1); Girls' Junior Glee Club (1); Spring Festival (1); Register Staff, Staff Secretary (4); O-Book Staff (4); Press Club (4); Latin Club (2,3); Vice President (3); President (3); Junior Honor Society (1,2,3); Student Control (1,2,3,4); Central High Players (1,4); Project Committee (2); Central Colleens (2); Girls' Pep Club (2); Girls' Riftery (4); Road Show (4); Senior Play Advertising Committee (4); Spring Frolic (4); Commercial Awards (4)

HERBERTA RUTH WRIGHT

National Honor Society

Junior Honor Society (1,3); Latin Club (2,3); Latin Awards (3); Los Sabios (3,4); Reporter (4); Motor Club (4); Junior Red Cross (4); Skating Club (3); G.A.A. (1); Girls' Junior Glee Club (1); Student Control (3,4)



DORIS YANNEY

Senior Play (4); Commercial Awards (4); Motor Club (4); Student Control (4)

GERALDINE M. YECHOUT

Swimming (1); Girls' Sports (1); Student Control (2,4); Road Show (1,3,4); Homeroom Representative (4); Skating Club (2)

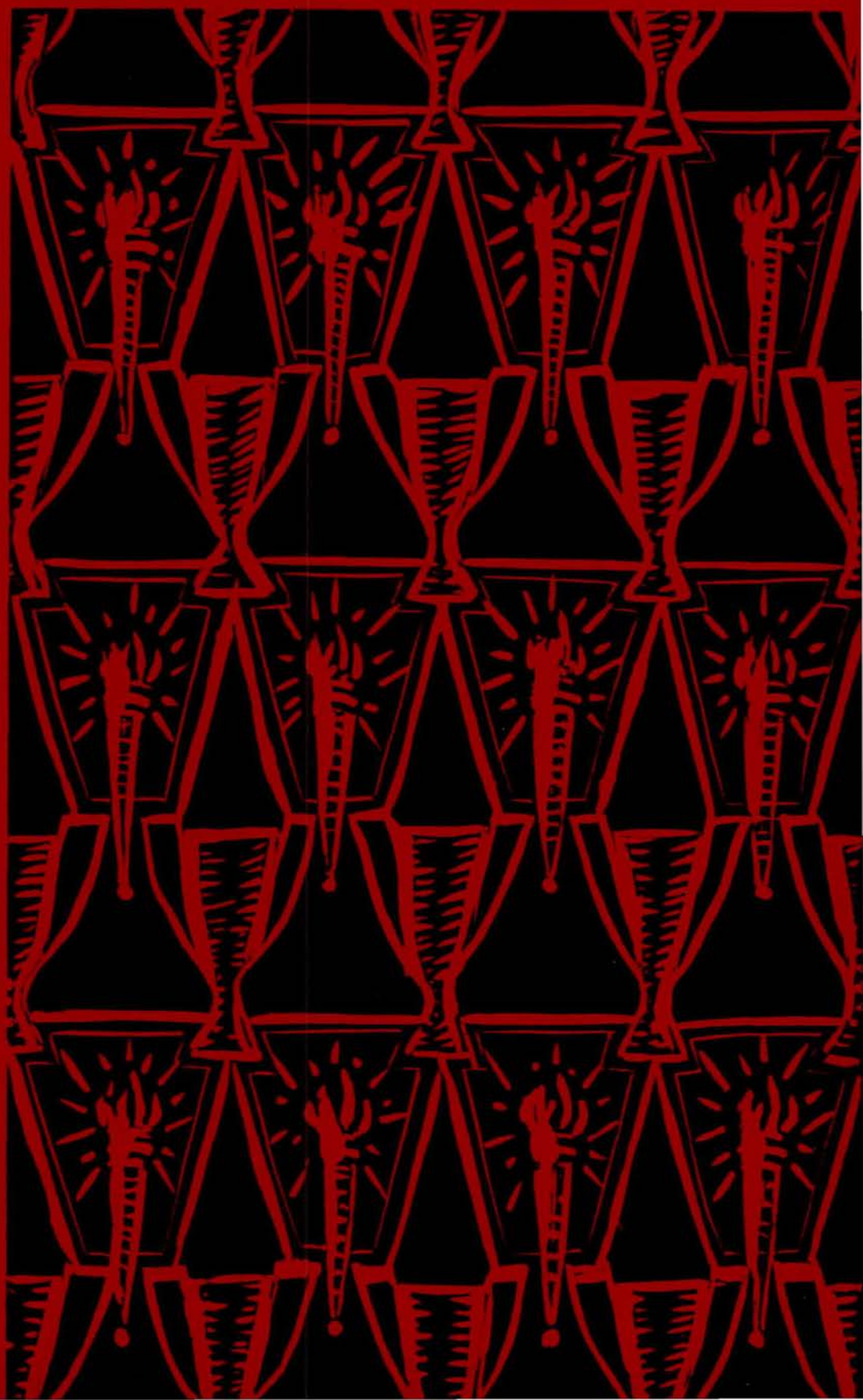
SENIORS WHOSE PICTURES DO NOT APPEAR

GEORGENE ATKINS
SHIRLEY ANADELL BROWN
JACK A. BURLEIGH
ISAIAH CAREY
LOIS CHRISTIE
JASPER COLE
JOSEPH W. DAVIS
EMMETT DUNAWAY
MORTON FRANK
MARJORIE E. FURSTENBERG

VIRGINIA J. GERLEZ
ROBERT GILLESPIE
VIRGINIA ARLENE GILMORE
JOE FRED GRECO
MARTHA JEAN HALL
ROSS HARTZ
ERSIE MAY HAYDEN
DAISY CAROLINE HEATH
ROBERT E. HENNINGSON
MARY GERALDINE HUNKER
GLORIA KOENIGSTEIN

LEONARD LUTTBEG
THOMAS LeHANE McCARRON
LEONARD MILLER
LORMA A. PATOW
GORDON PICOTTE
ANNETTE REDMAN
ELIZABETH SCIGLIANO
ISADORE I. SEIGEL
LORRAINE E. SLEDGE
ELNORA SMITH
RUSSELL FAY STORY

JACK TETARD
RICARDO TIRRO
REALMA TURNER
CLIFFORD TYMONY
FRANK P. VIRGILLITO
BOB H. WELLMAN
MILDRED WILEY
BESSIE WILSON
CURTIS WOODS
TRACY ZACHEK





KLEIN



NATIONAL HONOR SOCIETY

Pratt, Burke, Catlin, Goltzmeier, R. Johnson, Morton, Spier, Steinert, Gates, Berman, Covert,
 Kalmanson, Edwards, M. Johnson, Lewis, Hendricks, Ferryman, Burstein, Richards, Woloshock, Siver, Garrotto,
 Wolston, J. Griffith, Neisen, Rosenstein, Noble, Dickinson, Carlberg, Burton, Lorese, Burns, Macchiello,
 Whestone, Wright, Pegler, McCampbell, Carleton, Beck, McIntyre, Stabough, Aatemon, Burchell, Finer, Knott,
 Beasley, Negus, McBride, M. Griffith, Freyman, Westring, Mactier, Jacobs, Amber Wolf, Wertheimer, Klein,
 Not in picture: Davis, Eggers, Lindee, Metzler, Palerito, Pitts, Randall, Teard, Wells, Woodhouse



STUDENT COUNCIL

Wahlquist, Murphy, Stryker, D. Smith, Haugse, Yergey, Busche
 C. Covert, Gantz, Slobaugh, Catlin, Anderson, C. Smith, Carleton, Burke
 R. Smith, Anderson, Holloway, Carey, Mactier, Clements, Hronek
 Not in Picture — Lenke Isacson

STUDENT COUNCIL

Following on the heels of last year's movement for more democratic practices at Central, the Student Council has expanded its field of service and now carries its operations into every homeroom through movements coordinated with the Homeroom Representative body. Each homeroom elected its representative and alternate during September, and from this group the Student Council was chosen.

Those desiring to be officers filed petitions for election with the Student Council, and, after introduction at a mass meeting, were elected by a vote of the entire student body. Officers chosen were Duane Carey, president; Malcolm Holloway, vice-president; Jerry Anderson, secretary; Frank Hronek, treasurer.

Homeroom Representatives met every Monday morning to present suggestions from their homerooms and to receive instructions from the presiding officer, Vice-President Malcolm Holloway. The Student Council met every Monday and Wednesday, eighth hour, in Room 241. Here matters brought from the morning meetings were discussed, and action was taken on other pertinent problems. A committee headed by President Carey mapped a p'an of action for the entire year so that business might run smoothly at all times.

The Council has sponsored the Thursday afternoon dances in the gym and the all-school clean-up campaign. They have recommended that school letters be given to the debate team. Many new activities are to be taken over next year, and a full schedule is already being discussed.



HOMEROOM REPRESENTATIVES

Fisher, Beck, R. Belknap, Hammond, Borg, A. Belknap, Clements, Kieser, Carey, Latenser, Haugse, Hronek, B. Jensen, Howard, Bowlds, Vanderson
 Lowery, A. Busch, Freymann, Katzmomn, Cunningham, J. Busch, Gast, Bunn, Livingston, Richards, Hasenjager, Gardiner, Johnson, Heinlen, Gantz
 Clark, M. Jacobsen, Barber, Best, Dolgoff, Feltman, J. Anderson, Bernstein, Boker, Dewell, Enochson, Ellesworth, Byrant, Dickinson, E. Jacobsen, Hawkins, Christiansen
 Crouse, Dansky, Bernstein, DeBell, Farber, Griess, Burke, Davis, Catlin, G. Anderson, Cooper, Allen, Hubbard, Gantz, Decker, Kosial, Hinckley, Adler, Kaspar
 Haecker, Cohen, Isacson, Covert, Byrne, P. Carter, Beasley, Kolnick, Fuccio, Belzer, Kulhanek, Doud, Kirk, Hassler, Coon, Evans, H. Carter, Carmichael



HOMEROOM REPERSENTATIVES

Ostrand, S. Smith, Olson, T. Poole, Maenner, Weidenfeld, Merchant, Suttie, Marton, Wheeler, Stryker, Malashock, Murphy, Munro, Ploss, McCarthy, Slater, Muffitt
 Neafus, Margolin, Segall, Svehla, Nuquist, Minarik, D. Smith, Mactier, Vaccaro, Yergey, Moon, Stiefler, Raffel, R. Smith, Templeton, Putt
 Payne, Townsend, Whited, McKenna, Veber, C. Smith, Sunderman, Wiesman, Swanson, Rothkap, Walsh, Peycke, Richards, Still, Newman, Roessig
 Rowsey, Stone, Sargent, Malm, Vernon, Watts, Roadhouse, Palmquist, McIntyre, Wimberly, Tetard, Rychly, Reynolds, Taylor, M. Smith, Mallory, Stamm
 Reznichek, Mugasis, G. Wolk, Moore, Wintraub, Satrapa, Negus, Tyler, Wertheimer, Young, Salerno, Milone, Nigro, Swartz, K. Poole, Protzman, Wilson



O-BOOK STAFF

Edwards, Covert, Catlin, Barish, Cohn, Freymann, Devereux, Steinert, Eggers, Anderson, Neafus, Hendricks
 McAvin
 Johnson, Scott, C. Smith, Griffith, Arthur, Mactier, Jordan, K. Gogola, Morton, Spier, Castro, Ryan, Krahtz,
 Blumkin
 Thomas, Sommer, Meyer, Eastlack, Wilkerson, Burton, Thorndike, Beck, Wenninghoff, Marks, Kalmansohn,
 Feeken, Crouse, Robinson, Konecky
 Swarr, Burstein, Weinstein, Mercer, McIntyre, Carleton, Schwartz, R. Gogola, Tetard, Vernon, Koldborg,
 Dolly, M. Smith, Marchant
 Knott, Wertheimer, Howe, Jacobs, Richards, Klein, Malashock, Dickinson, Berman, Woodhouse, Petersen,
 Ellsworth, Davis, Dailard, Coffin



O-BOOK CIRCULATION

Hickey, D. Howe, Plank, Cohn, R. Howe, Meade, Johnson, Zwiebel, Lewis, Thompson
 Crouse, Farber, Johnson, McCampbell, Jacobs, Freymann, Eggers, Smith, Pattavina, Greenberg, Knott
 Swarr, Catlin, Herzberg, Andersen, Mactier, Westering, Singer, Griffin, Burke, White, Meyer, B. Cohn
 Nelsen, Noble, Kennedy, McBride, Burstein, Garrotto, Klein, Malashock, Richard, Payne, Bruington



Covert, Barish, Amberson, MacDuff, Rowsey, Kidd, Hull, Parsons
 Burstein, Holloway, Latenser, Westering, Mactier, Hendricks, Keister, Green
 Knott, Burns, Hronek, Farquhar, Griffith, Rosenstein, Freidman, Swarr, Davis
 Farber, Smith, Noble, Carleton, George, Conley, Johnson, Druif, Malashock
 Mr. Schmidt, Miss Mueller, Mrs. Roush, Miss Carlson, McBride, Miss Bozell, Mr. Warner

SENIOR OFFICERS AND SPONSORS

Officers for the June, 1940, graduating class were elected in December. Bill McBride was chosen president. Other officers are Milton Parsons, vice-president; Marjorie Johnson, secretary; and Howard Westering, treasurer. Sergeants at arms are Margaret Carleton and Allan Mactier. Ned Eastlack was chosen class reporter.

Miss Julia Carlson, executive sponsor, aided the cabinet in making plans for the senior enterprises. Mrs. Florence Roush, Miss Margaret Mueller, J. G. Schmidt, Miss Bess Bozell, Mrs. Grace Knott, and Don Warner were the other faculty sponsors.

Each of the three senior homerooms elected its own presiding officers. Officers for Homeroom 215 are chairman, Harvey Burstein; vice-chairman, Malcolm Holloway; secretary, Allan Kidd; treasurer, Marilynn Griffith; sergeants at arms, Forrest Keister and Georgianna Hultman. Chairman of 325 is Bob Amberson; vice-chairman, Marie Knott; secretary, Geraldine Conley; treasurer, Kenneth Fee; sergeants at arms, Frank Hronek and Barbara Burns. In the auditorium officers are chairman, Sarah Noble; vice-chairman, Jim Green; secretary, Bill Spier; treasurer, Margaret Smith; sergeants at arms, Elaine Farber and Jack Latenser.

The January graduating class elected Charles Vacanti, president; Morton Frank, vice-president; Helen Fingeret, secretary; Betty Geifmann, treasurer; Leonard Luttbeg and Lorraine Sledge, sergeants at arms.



Keister, Latenser, Jewell, Morton, Freymann, Devereux, Pound, Cohn, Barish, Parsons, Enochson, Seigal, Thomas, Kozial, Decker, Vandagriff, Pratt, Wilkerson, Griffith, Jacobs, Schwartz, Eastlack, Moon, Kalmansohn, Edwards, Crounse, Posner, Woodhouse, Burns, Tetard, Beck, McIntyre, Dolly, Pommerenk, Shaughnessy, Smith, Taxman, Catlin, Rundell, Hendricks, Minnis, Hronek, Howe, Farquhar, Fitzpatrick, Weisman, Traub, Feeken, Civin, Yanney, Wainwright, Griess, Beasley, Margules, Nelson, Green, Anderson, Singer, Mactier, Malashock, McBride, Holman, Burke, Porter, Lindee, Griffith

SENIOR PLAY

"Lady Precious Stream," an unusually attractive Chinese comedy, was the production offered April 19 by the class of '40, under the direction of Miss Myrna V. Jones. The play, fundamentally Chinese but with an element of Western humor and romance, is cast in regular Chinese stage form and reveals the Chinese characteristics of staging, including the prop men at work.

Kay Holman played the part of Lady Precious Stream, youngest daughter of the Wang family. Her two elder sisters, Silver Stream and Golden Stream, were portrayed by Marion Lindee and Dorothy Nelsen. Allan Mactier, as Wei, the tiger general, and Leonard Margules, as Su, the dragon general, played the roles of their husbands. Jim Green took the part of Wang, the pompous head of the Chinese royal family; Natalie Porter, the part of Madame, his wife; Bill McBride played "our hero," Hsieh Ping-Kuei, the humble gardener; and Jeanne Burke, Princess of the Western Regions. Gordon Freymann was venerable reader.

Tom Porter was assistant director; Lazier Singer, student director; Helen Hasenjager and Bernice Crounse, prompters, and Pauline Bruett, costume mistress.

The business manager was Perry Hendricks; ticket manager, Dick Hull; and stage manager, Frank Rice, assisted by Walter Hammond, student stage manager. Chairman in charge of properties was Tom McManus.

The music was under the direction of Don Pound, and ushers were non-commissioned R.O.T.C. officers.



Neafus, Hickey, Slattery, Berman, Pinkowitz, Kidd, Howe, Kahley, Koory, Ryan, Minnis, Moon, Margules, Enochson, Weinstein, Holloway, Mayhall, Westering, Devereux, Griffith, Wilkerson, Meyers, Greenberg, Taxman, Green, Konecky, Farber, Edwards, Crummer, Rowsey, Anderson, Morton, Jacobs, Hronek, Graves, Kozial, Decker, Bakewell, Pratt, Noble, Nelsen, McIntyre, Beck, Arthur, McBride, Dickinson, Tetard, Williams, Pommerenk, Drevich, Beasley, Griess, Porter, Negus, Foldberg, Fustas, McCampbell, Catlin, Weisman, Feeken, Griffith, Jensen, Bruett

SENIOR COMMITTEES

Nine senior committees were chosen this year to facilitate smooth running of important senior activities. Miss Julia Carlson, executive senior sponsor, is in charge of all the committees with the exception of the program committee, which is sponsored by Don Warner.

Howard Barish was publicity chairman of the senior play this year, and Dick Hull was in charge of ticket sales for both the play and the senior banquet. Other banquet committees and their chairmen are: program, Ed Covert; hotel and menus, Mary Ellen Davis; table arrangements, Frank McDuff; decorations, Ruth Rosenstein.

Jean Swarr was chairman of the program committee, which selected and arranged the program for senior commencement. Elwood Rowsey headed the senior popularity contest committee, and business manager for the senior class is Perry Hendricks. Typists for the class and their committees are Marjorie Druif, Gloria Friedman, and Betty George.

The senior officers selected the members of the committees from the list of graduating seniors, eliminating those who had heavy work on the O-Book or the Register staffs. Seniors who were particularly anxious to serve on a committee applied for positions.



Camel, Witkin, Pinkovitz, Friedman, Lewis, Richards, Kalmansohn
 Davis, Rowsey, Ford, Howard, Singer, Tepper, Simon, Cooper
 Klaver, Nystrom, Rundell, Burstein, Mr. Warner, Fromkin, Finer, Klein

DEBATE

Central's debate team, working under its new coach, Don Warner, completed one of the outstanding seasons of recent years. The team this year succeeded in winning honors not only for debate, but also in many individual forensic contests.

Heading the season's string of victories is the district debate championship, won by Marcia Finer and Ray Simon. In the National Forensic League district contests, the debaters ranked third, but they combined with the individual speech contestants to win the tournament.

Central placed second in the Intercity League and second in the Missouri Valley Girls' tournament. At the Hastings College non-elimination tournament, the first team ranked near the top in a field of over forty contestants. At the state tournament, Central placed fourth.

Carrying the school's colors in these contests were Lazier Singer, Harvey Burstein, Leonard Lewis, Yale Richards, Ray Simon, Marcia Finer, Annette Klein, Maxine Nystrom, Margaret Rundell, Elwood Rowsey, John Phillips, Burton Howard, and Lewis Ford.

In the individual contests, speakers who succeeded in winning various honors for Central were Lazier Singer in original oratory, rebuttal, and radio newscasting; Harvey Burstein, humorous declamation; Ray Simon, declamation; Milton Guss and Erwin Witkin, extemporaneous speaking; Lo Raine Triska, dramatic reading.

Throughout the year, the debaters maintained one of the country's largest chapters of the National Forensic League, national honorary speech society.



JUNIOR HONOR SOCIETY — EPSILON CHAPTER

Swancutt, Moody, Gantz, Spohn, Mitcheltree, Munger, Wilson, Covert, Byrne, Dansky, Lashinsky, Simon,
 Wahlquist, Cohen
 Howard, Mugasis, Schack, Hill, Yuenger, Pepper, Whitlock, Deffenbaugh, Forbes, Schultz, Gross, Halpine,
 Hindman, Nigro
 Spier, O'Brien, Barson, Newman, Clarke, McCaffrey, Malm, Drishaus, Hellner, Pospichal, Holler, Jorgensen,
 Foster, Miller
 Chesnut, Larsen, Macchietto, Benson, Freymann, Cobb, Crossman, Street, Randall, Rapp, Prather, Wingate,
 L. Wintroub, Lorkis, Douglas
 Cihacek, Witkin, Barber, Brogan, Kopperud, Smith, Beck, Cowger, Nygaard, Gearhart, Isacson, Klaver,
 Wolfson
 Kirshenbaum, P. Wintroub, Mayer, Hassler, Huntzinger, K. Anderson, Childe, Nielsen, Folda, Hunter, Rundell,
 Ristich, Osoff, Rubenstein, Laterla
 Not in Picture — Aldenhoff, Anderson, Baysdorfer, Hossack, Jacobson, Maroney, Siegler, Traub, Welsh, Wright



JUNIOR HONOR SOCIETY — DELTA CHAPTER

Kulakofsky, Kalmansohn, Mailand, McArthur, Slater, Scholnick, Cunningham, Creedon, Denenberg, Fromkin,
 Nachman, J. Crenshaw
 Busch, Kidd, Wilcox, Lincoln, Blank, C. Rosenstock, Moran, E. Reynolds, J. Reynolds, Triska, Hoyer, Peterson,
 Robinson, Nordstrom, Stryker, Grimes, Sylvester, Howard, Greenberg, J. Rosenstock, Davis, Fitzpatrick,
 LeBaron, Kozlar
 Melcher, Loek, Garten, Morgenstern, M. Johnson, Dus, Turner, Hughes, Mangel, Pospichal, Osborne, Folmer,
 McKenna
 Nigro, Taylor, Rundell, Ekstrand, Boyer, P. Johnson, Neuhaus, Backlund, Krecek, Perelman, McConnelee,
 Okeson, Wahlquist
 Not in Picture — Bouton, Church, Curtis, Svehla



JUNIOR HONOR SOCIETY — GAMMA CHAPTER

Jones, Cook, Klopp, Scribner, Baird, Rubnitz, Peyton, Hindman, Plank, Gerber, Tepper, Jensen, Pavlik, Templeton, Holmes, Nepomnick, Grossman, S. Smith
 Burket, Ginn, Rector, Stuht, Neuhaus, Greusel, Augustson, Loucks, Lashinsky, Simon, Friedman, Castro, Miller, Bell, E. Smith, Margolin, G. Loomis, Cherwitz
 Cooper, Davis, Bryant, Bordy, Lagman, Stepanek, Hagen, Ensor, Matejka, Murphy, Sellers, Sinton, Foote, Mackley, Segall, Young, Moore, Shields
 Kulhanek, Heimrod, Everett, Drexel, Reichstadt, Brown, Bihler, Rapp, Sargent, Mead, McCague, Gaden, Busch, Rosell, Payne, Newbranch, Smalls
 London, Reznicek, Savidge, Gantz, D. Brown, Maenner, Abariates, Peycke, Loomis, Lyle, Larson, M. Smith, Dickinson, DeLacy, Walton, Lacina, E. Brown, Thomas
 Not in Picture — Edwards, Finlayson, Harston, Humlicek, Johnson, Palmquist, Weaver, Williams

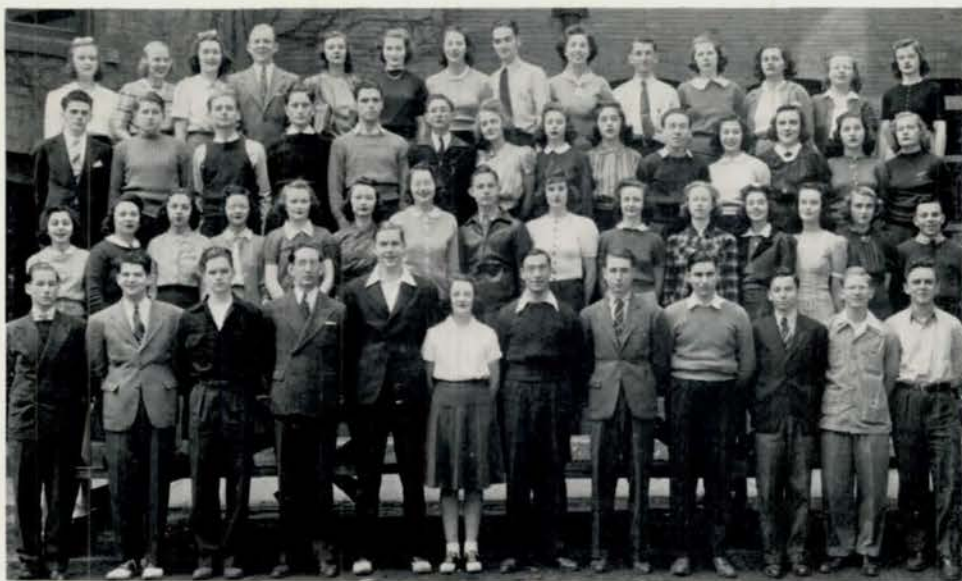
JUNIOR HONOR SOCIETY

Founded in 1923 by J. G. Masters, former principal of Central High School, the Junior Honor Society is the highest goal for which underclassmen may strive. Its purpose is the recognition of individuality and high achievement in both scholarship and school activities, the encouragement of leadership, and the development of character.

Three chapters, Epsilon for freshmen, Delta for sophomores, and Gamma for juniors, compose the society. All underclassmen elected must have two A's and no grade below a B, unless the student carries five credits; he is then allowed one C. The only requisite for membership during the freshman year is high scholarship and good character, but in the sophomore and junior years, the student must show qualities of service, initiative, and leadership.

This year, 258 students were elected to membership by a faculty committee under the chairmanship of Miss Elly M. Jacobsen. Active membership ceases at the end of one year, but graduates who have belonged to the Junior Honor Society are considered honorary members.

Announcement of the election was made in the Central High School auditorium on May 6. Mrs. Irene H. Jensen announced juniors elected to the Gamma chapter, Miss Frances McChesney announced the members of the Delta chapter, and Norman Sorensen announced freshmen who were elected to the Epsilon chapter. Vice-Principal Andrew Nelsen delivered the charge.



REGISTER STAFF . . . FIRST SEMESTER

Edwards, Johnson, Catlin, McBride, C. Smith, Dickinson, Griffith, Plank, Burton, Kalmansohn, Scott, Klein, Slater, Davis
 Mercer, Barish, Silverman, Eisenstatt, Bernstein, Eastlack, Palmquist, Wohlner, Rosenstock, Goldstein, Sommer, Meyer, Belmont, Knott
 Blumkin, Crounse, Marks, Boleski, Fitzpatrick, Dolly, Greenberg, Berman, M. Smith, Feeken, Marchant, J. Griffith, Hoeldobler, Rychly, Konecky
 Klaiman, Cohn, Howe, Singer, Mactier, Swarr, Schwartz, Guss, Jacobs, Richards, Malashock, Neafus

JOURNALISM DEPARTMENT

Work of the journalism department this year has been centered around three activities — the Central High Register, the Purple and White Handbook, and the O-Book. Under the direction of Mrs. Anne L. Savidge, students with one or more semesters of journalism are organized into publication staffs under student heads.

Nationally recognized as an outstanding high school paper, in 1927-32 and 1936-39 the weekly Central High Register won All-American honor ratings, highest award conferred by the National Scholastic Press Association.

A charter member of Quill and Scroll, international honor society for high school journalists, the Register received in 1933-39 the highest honor given by the society, the Quill and Scroll International Honor Award. The election of 31 students to the national body was announced at a Press club banquet in the spring.

For the first time since 1929, the Purple and White Handbook, a manual giving complete information about Central, was published, by a staff composed of members of the Register department. Yale Richards, editor, received letters from educational leaders throughout the country complimenting the book.

Officers of the Press Club this year were Alan Jacobs, president; Marilyn Edwards, vice-president; Jean Swarr, secretary-treasurer; Eileen Wainwright and Allan Mactier, sergeants-at-arms. As a social activity, the club sponsored a banquet and a dance.



REGISTER STAFF . . . SECOND SEMESTER

Edwards, Johnson, Catlin, Cohn, Weaver, Baird, Haugse, Neafus, Finer, Robinson, Masters, Klein Swarr, C. Smith, Griffith, Plank, Sargent, Burton, Ryan, Wilkerson, Knott, Rychly, Fox, Davis Crouse, Marks, Herzberg, Katz, Eastlack, Palmquist, Wohlner, Rosenstein, Goldstein, Kalmansohn, Konecky, M. Robinson Blumkin, Wainwright, Bruington, Segall, Tatelman, McIntyre, Greenberg, Tetard, Woodhouse, Smith, Hughes, Marchant, Civin Thomas, Mercer, Howe, Farquhar, Jacobs, Mactier, Dickinson, Schwartz, Guss, Berman, Richards, Malashock

REGISTER STAFF

FIRST SEMESTER

SECOND SEMESTER

| | | |
|---|-----------------------------|---|
| Allan Mactier | Managing Editor | Allan Mactier |
| | Editor-in-Chief | Ann Dickinson |
| Sidney Schwartz } Marie Knott } Jean Swarr } | Associate Editors | Sidney Schwartz |
| Richard Kalmansohn } Julius Cohn } Bill McBride } John Plank } | Assistant Associate Editors | Richard Kalmansohn Marie Knott Art Mercer John Plank |
| Alan Jacobs | News Editor | Alan Jacobs |
| Al Garrotto } Ed Malashock } | Sports Editors | { Al Garrotto { Ed Malashock |
| Julius Cohn | Rewrite Editor | Julius Cohn |
| Jack Berman | Business Manager | Jack Berman |
| Joye Greenberg | Advertising Manager | Joye Greenberg |
| Harry Goldstein | Circulation Manager | Harry Goldstein |
| Annette Klein } Yale Richards } | Copy Readers | { Marie Carlberg { Marjorie Robinson |
| Rita Marks } Sophie Blumkin } | Proof Readers | { Rita Marks { Sophie Blumkin |
| Eleanor Rychly | Exchange Editors | Eleanor Rychly |
| Mary Ellen Davis | Librarian | Mary Ellen Davis |
| Jacqueline Woodhouse | Staff Secretary | Kathleen Petersen |
| Alan Jacobs | World-Herald Correspondent | Alan Jacobs |



PRESS CLUB

Keller, Kolmonsohn, Berman, Kirshenbaum, Ryan, Stuetler, Hindman, Clow, Baird, Weaver, Eisenstarr, Howe, Farquhar, Plantikow, Plank, Rubnitz, Hahn, Thompson, Ginn
 Rowsey, Mackley, I. Malashock, Seegall, Blankstein, Brockman, Logman, Bernstein, Cohn, Silverman, Mercer, E. Malashock, Richards, Friedman, Hoeldobler, Chirtz, Meyer,
 London, Goldstein, Wainwright, Thomas, McKenna, Savidge, Walton, Weed, Anderson, O'Neil, Loomis, Hagen, Payne, Young, Sargent, Stuft, Moerner, Fox, Bruntington, Masters,
 Lindel, Feecken, Katz, Dolly, Tatalmon, Greenberg, Houge, Nelson, Woodhouse, Rapp, Wohler, Sinclair, Rosell, McDonald, S. Dickinson, Davis, Knott, Sommer, Robinson,
 Blumkin, Fitzpatrick, Rychly, Rosenstein, Smith, Hughes, Anderson, Carey, Singer, Gardner, Teterd, Barish, Wilkerson, Eastlock, Neofus, Robinson
 Marchant, Konecky
 Crouse, Johnson, Edwards, Catlin, McIntyre, Griffith, Dickinson, Maetier, Jacobs, Schwartz, Guss, Burton, Smith, Palmquist, Swarr, Civin, Finer, Marks, Klein, Albert, Bernstein



QUILL AND SCROLL

Catlin, Rosenstein, Burton, Eastlack, Plank, Greenberg, Tatleman, McIntyre, Segall, Katz, Knott
 Blumkin, Thomas, Richards, Berman, Farquhar, Griffith, Smith, Palmquist, Thompson, Civin
 Edwards, Johnson, Malashock, Mercer, Jacobs, Mactier, Cohn, Dickinson, Swarr, Klein



PURPLE AND WHITE HANDBOOK STAFF

Edwards, Johnson, Catlin, C. Smith, Dickinson, Griffith, Burton, Kalmansohn, Scott, Davis, Klein
 Swarr, Mercer, Silverman, Eisenstatt, Bernstein, Eastlack, Palmquist, Goldstein, Sommer, Knott
 Blumkin, Crouse, Marks, Boleski, Dolly, Berman, M. Smith, Feeken, Marchant, Konecky
 Klaiman, Cohn, Howe, Singer, Schwartz, Guss, Jacobs, Richards, Malashock



William Spier
Ideal Central Boy

Allan Mactier
Most Likely
to Succeed

Gordon Freymann
Best Student

Malcolm Holloway
Most Personality

Bill McBride
Most Popular



James Green
Best Actor

Alex Weinstein
Best Artist

Frank Hronek
Best Athlete

Nuncio Pomidoro
Best Musician

Louis Wells
Best Voice



Perry Hendricks
Best Mannered

Hale Bixby
Best Looking

Edwin Covert
Best Natured

Howard Westering
Best Caveman

Jack Latenser
Wittiest



Jack Borghoff
Worst Woman-Hater

Harvey Burstein
Biggest Bluffer

Robert Ploss
Best Line

Robert Amberson
Best Dressed

James Slattery
Best Dancer

SENIOR POPULARITY CONTEST



Sarah Noble
Ideal Central Girl

Marie Knott
Most Likely
to Succeed

Marie Carlberg
Best Student

Phyllis Griess
Most Personality

Dorothy Thomas
Sweetest



Natalie Porter
Best Actress

Shirley Beck
Best Artist

LaJauna Paterno
Best Athlete

Jane Griffith
Best Musician

Virginia Slabaugh
Best Voice



Marjorie Johnson
Most Popular

Catherine Holman
Prettiest

Ann Dickinson
Best Natured

Marjorie McIntyre
Most Romantic

Jean Swarr
Wittiest



Charlotte Smith
Most Sophisticated

Pat Catlin
Peppiest

Elizabeth Owen
Best Line

Elaine Farber
Best Dressed

Eileen Wainwright
Best Dancer

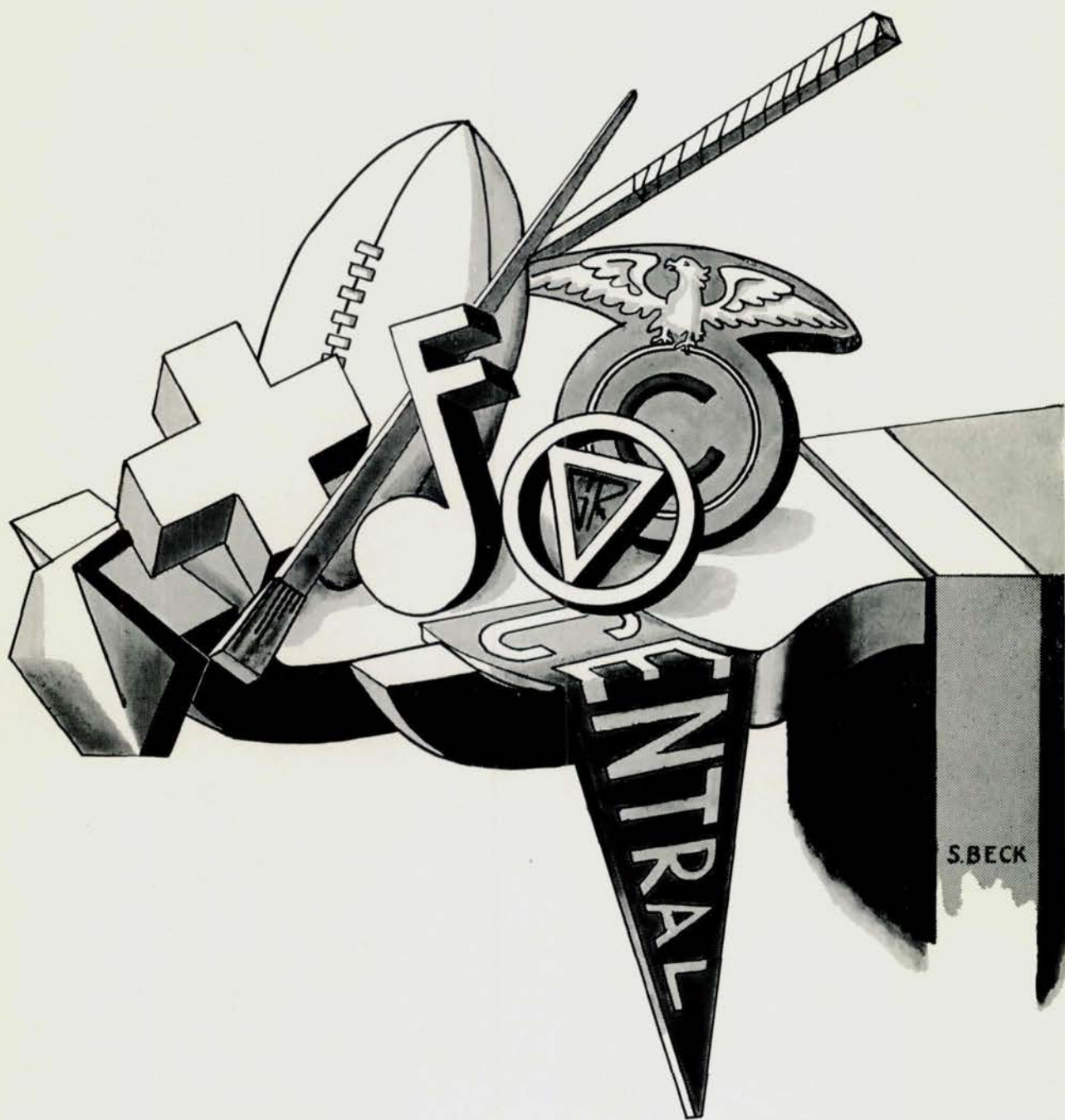
SENIOR POPULARITY CONTEST



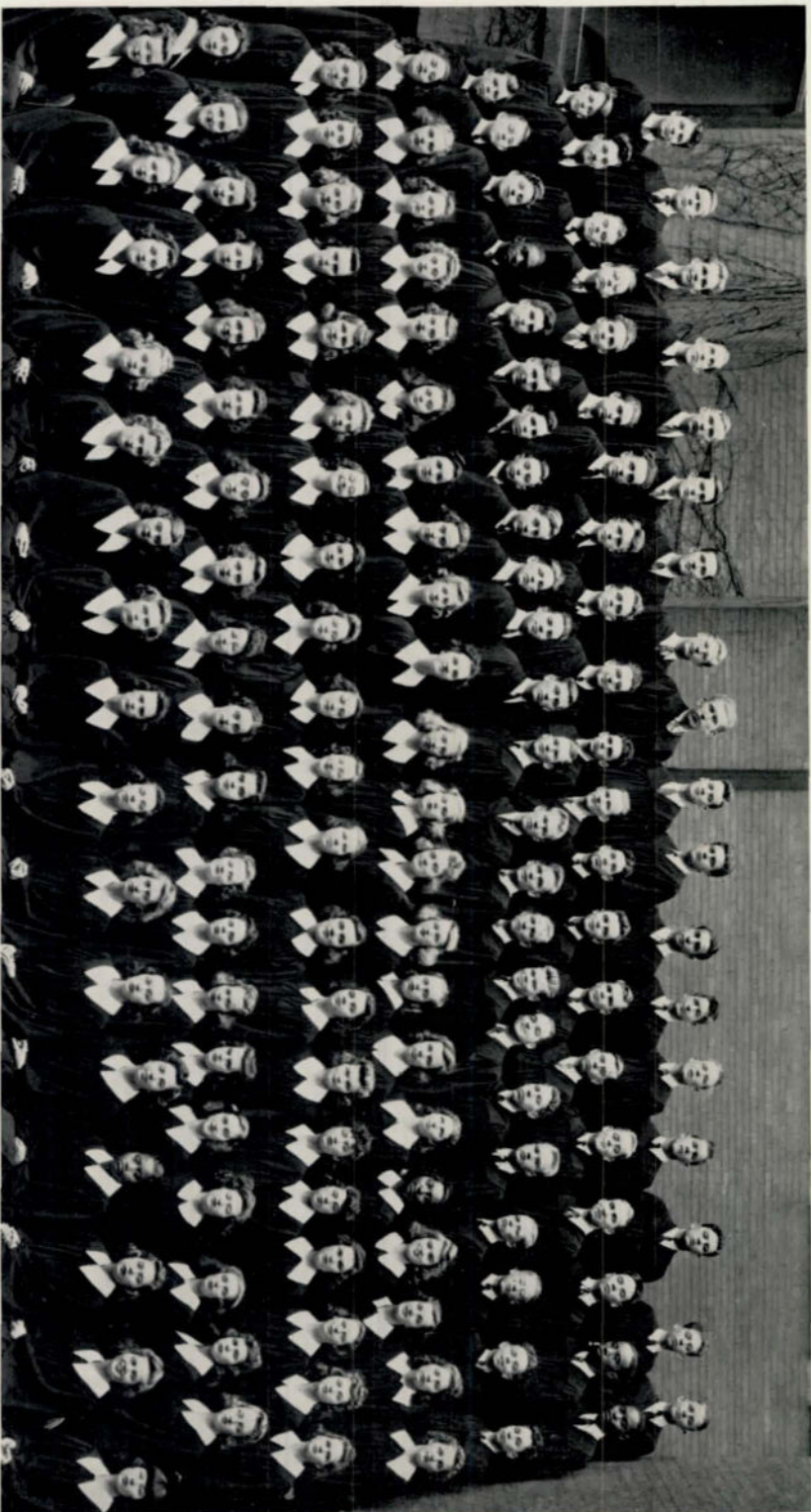
APRIL FROLIC

Hirrichs, Slabough, Anderson, Pratt, Catlin, Greenberg, Wainwright, Pattavina, Miss Towne, Carleton, Thomas, Negus, Noble, Burton, Smith, Gontz, Hookstra, Herzberg, Woodhouse, Pommerenk, Scott, Reed, Nygaard, Beasley, Burke, Madg, Davis, Paterno, Gress, Burns, Whetstone, Nelsen, Koenigstein, Lyle, Allen, Payne, Hackett, Newbranch, Douglass, Coverl, Lindvall, Isacson, Carter, Steberg, Johnson, York, Dickinson, Cressman, Holler, McIntyre





S.BECK



CHOIR

Campbell, R. Johnson, Shupe, Suttie, Anderson, Ricard, Sanders, Nuruquist, Dus, Bomgardner, Bishop, Vaccaro, Carter, Bunn, McIntosh, Gast, Acton, Molland, Melcher, Petello, Rowan, Demorest, Fuller, Graham, Womacque, Gogola, Devenney, Plotkin, Mercer, Swoboda, Turkel, Neatius, Wells, McArthur, Arnoldy, Swoboda, Mead, Mason, Love
 H. Johnson, Boffman, Herrington, Bolker, Lawson, Martin, Parlinson, Augustson, Peterson, Lepinski, Kaiser, Peterson, Reisser, Dewell, McBride, Anderson, Plank, Eggers, Petrose, Saliman, Binder, Baird, Evans, Kulakofsky
 Edwards, Brown, Kozial
 Watts, Clancy, I. Johnson, B. Johnson, Rapp, Carlson, Mangle, Davis, York, Mancke, Fallmer, Scott, Meyer, Brewer, Lyle, Christinger, Duda, Lacinia, Everett, Updegrave, Kennedy, Shurtz, Orso, Fishberg, Wertheimer, Nelson, Splawn, Shafton, B. Jensen, Thompson, Slabaugh, Tatalman, Sparling, Willmarth, Newbranch, Smalls, Pangle, Alperson, Parashus, Heyn, Reynolds
 Greenspan, Tyler, Meinzen, Shields, Bruett, Smith, Pitts, Holman, Maag, D. Jensen, Larson, Burton, Murrell, Moore, Carter, Scott



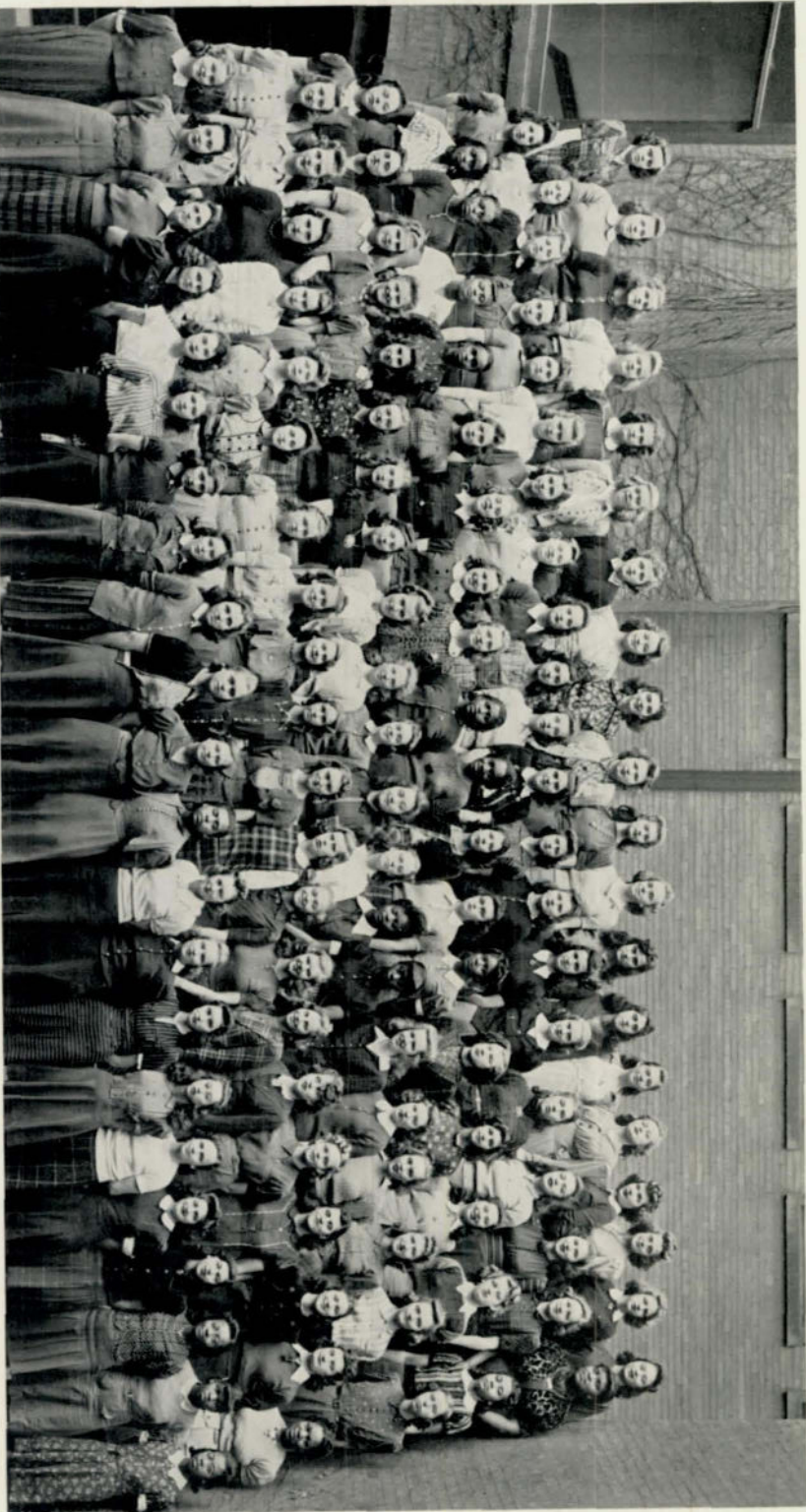
GIRLS' SENIOR GLEE CLUB

Miller, DeMarco, Breunsbach, Meyer, Steberg, Evans, Debell, Wilson, Rapp, Nimmo, Pagliaro, Chue, Pittman, Matcha, Surface
 McCarron, Kirkbride, Sillstrap, Larsen, Koch, Wenninghoff, Hunter, Huntzinger, Byrne, Dansky, Upcher, Johnson, Miller, Wilcos, McCague
 Huntzinger, Weishaar, Zajucek, Hosier, Peterson, Kopecky, Cosentino, Kadis, Wine, Greenspan, Wilson, Moran, Christie, McDonald, Story, Goldberg
 Pezzner, Doll, Merrill, Moran, Brammann, Eckstrand, Gemma, Lashinsky, Baright, Bebb, Steinberg, Lutcavish, Pospichal, Wohlner, Davis, Vlcek, Freshman
 Bruner, Mallinson, Karlen, O'Neal, Sargent, Prather, Crossman, Drishaus, Clark, Gasser, Curtis, Barton, Vanecek, Wilston, Hosman, Parise, Lindevall
 Brick, Osoff, Rubenstein, Isackson, Butera, O'Neal, Hellner, Murphy, Barber, Waters, Iske, Cohn, Chin, Redman, Douglas, Raapke



BOYS' SENIOR GLEE CLUB

Mallory, Quinn, Hughes, Muffitt, Kline, Holtz, Clark, Parsons, Sanford
 Ford, Brogan, Bower, Dus, Loucks, Matya, Gould, Cooper, Fanciullo, Gray
 Sahling, Bowden, Weishaar, Austin, Brainard, Cain, Cunningham, Wilson, Carr, Rossiter
 Brizzi, Wilson, Beasley, Benson, Lacy, Hill, Gaskill, Pfeiffer, Cornell, Larsen
 Reins, Gass, Quinn, Alloy, Carter, Schreider, Nielsen, Monahan, Newman, Bernstein



GIRLS' JUNIOR GLEE CLUB

Grovett, Horan, Engler, Weaver, Cowger, Calvert, Kozak, Hoyes, Rice, Loves, Jacobsen, Kasper, Brandt, Gargano, Zoesch, P. Hansen, McDaniel, L. Hansen, Kuchera, Epstein, Vecchio, Elishie, Pattavina, Haggerty, Belzer, Nelson, Turdy, Hovezak, Brown, Balisz, Hamilton, Reins, M. Miller, Devlin, Thomas, Graves, Boston, Wasserman, Merriman, Swanson, J. Franklin
 Neely, Haskell, Spraings, Davis, Hoffman, Zimmerman, Samland, Krelle, V. Morrill, Johnson, Dodd, Vandas, Thomas, Spainhour, Durbin, Shafer, Reessig, J. Miller
 Bates, Spino, Bower, Wilson, Bernstein, Brookstein, Wingate, Martin, Larsen, Hindman, McKenna, Staenberg, Crenshaw, Marlon, Hayden, Dorway, Smith, Groham, Ellis, Cochner, Neevel, Cameron, Doud, Clary, Blumkin, Selden, Sindergaard, Swahn, Clinfelter, Love, Markel, Jandebeur, McFarland, Lanxon, Karpf, Shupe, Kaplan, Blocker, McHugh, Turner
 Scannel, Singer, Ruback, Sadofsky, Haecker, Larkis, Rozmajzl, Lippert, Salerno, Schoening, Koldberg, M. Franklin, Love, Walker, Marsh, Chasanov, L. Morrill, Agosto, Perrotto, Davis, Forrest, Wilburn



BOYS' JUNIOR GLEE CLUB

Greenberg, Melton, Walla, Sturges, Vickery, Simon, Mort, Sheldon, Polito
 Howard, Hayduck, Whitney, Kemmerer, Fletcher, Crowley, Lundgren, Cochran
 Karlquist, Reynolds, Moore, Pound, Mactier, MacNicholl, Gillespie, Edwards, Winer



ORCHESTRA

R. Menshik, Weisman, W. Rozmarin, Britton, Hunter, Lawson, Miller, Simon, Nachman
 Holman, Lagman, Rocceforte, Lee, Pomodoro, McKimmy, Lippert, Denenberg, Petsold
 Carlan, Kulhanek, Bagsdorfer, Thomas, Higgins, Larson, Bokel, Gearheart, Hyde, Jacobsen
 Bakewell, Jane Reznicek, Jean Reznicek, Chase, Glasshoff, Mr. Tilton, Griffith, Kirk, Ortman, Duff



JUNIOR AND BEGINNERS' ORCHESTRAS

Armbrust, Potash, Skaveril, Lawson, Kulawik, Gustafson, Nellor, Hammer, Mammen, Trenisi, Talcut
 Rossiter, Rossiter, Weisman, Knoblah, Sol, Rimerman, Murphy, M. Housechild, V. Johnson, B. Johnson, P.
 Housechild
 McCarron, Radicia, Brandt, Taylor, Toscano, Brown, Miller, Jandebeur, Ogdborn, Poole, Tompsett
 Buffington, Milne, Dilworth, Stevens, Lacing, Schestak, Mr. Tilton, Boyer, Schultz, Chapin, Potera, Monzu



JUNIOR AND BEGINNERS BAND

Pompie, Eastlack, Rovetto, Fletcher, Mason, Sacco, Ruemping, Manzu
 Abrahamson, Tompsett, Bukacek, Walla, Campbell, Ramsey, Boison, Swanson
 Schroeder, Kizer, Deal, Fisher, Graham, Wiseman, Roffman, Beckman
 Hrabik, Glickfield, Garton, P. Emig, G. Emig, Price, Lippert, Kemp



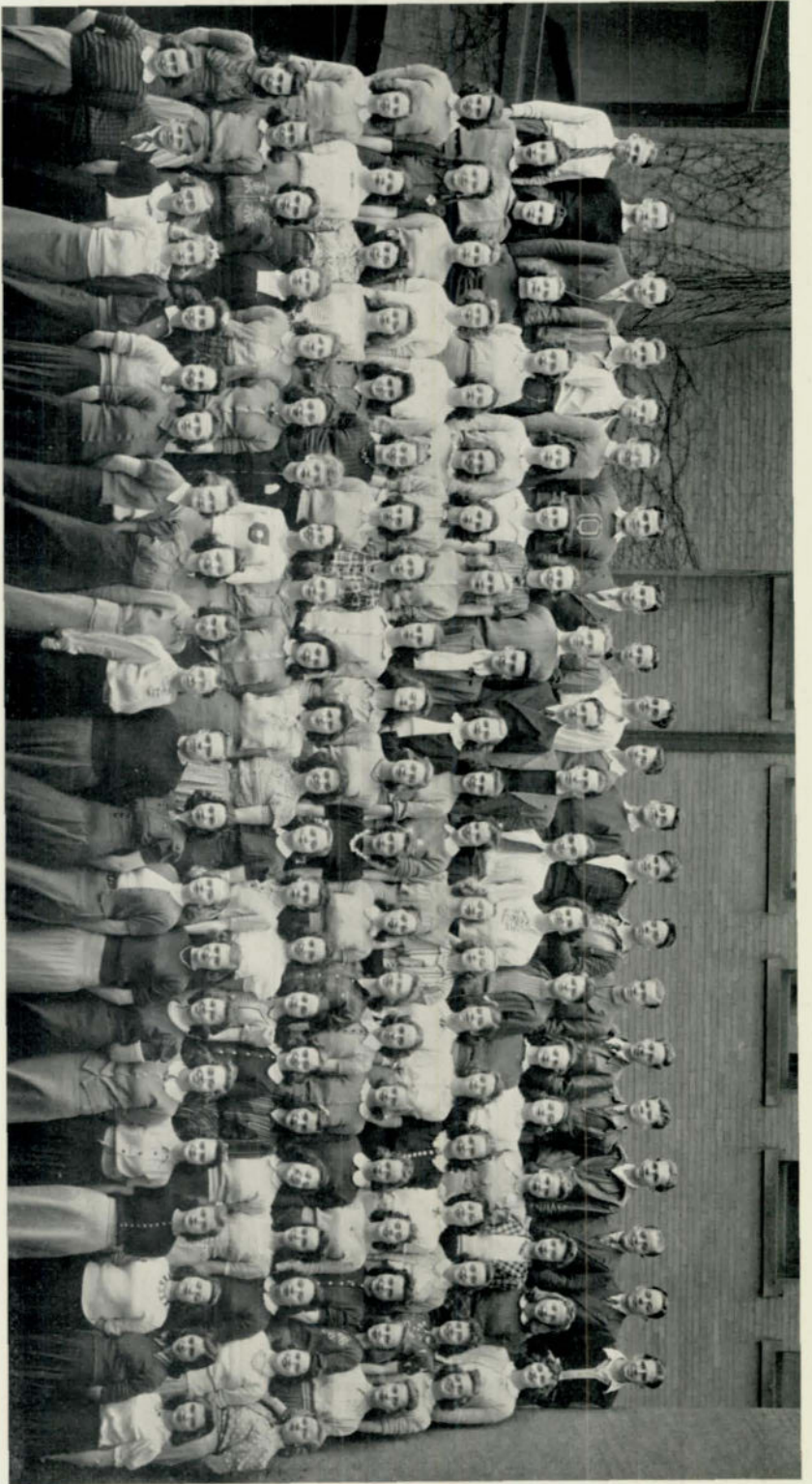
R.O.T.C. BAND

Monzu, Ostrand, Pompie, Menshik, Rozmarin, Briton, Grimes, Gaines, Pappas, Hahn
 Incontro, Walters, Turkel, Eastlack, Kunkle, Lippert, Porter, Kinney, Greenbaum, Sartino, Kulakofsky
 Waechter, Lagman, Piccolo, Larson, Soland, Bishop, Lee, Miller, Anderson, Johnson, Dworak
 Reno, Myers, Weber, Pegler, Pomodoro, Johnson, Gates, Heinlen, White, Roccaforte, Still



STAGE CREW

Day, Barghoff, Morrill, Paterno, Buchanan, Kuppinger
 Beasley, Beck, Wells, Kieser, Helaney, Vaccaro
 Higham, Cahill, Sibbensen, Hammond, Holmstrom, Gaskill



CENTRAL HIGH PLAYERS

Mallard, Jewell, Rasmussen, Holloway, Fee, Margules, Hronek, Latenser, J. Maenner, Clements, Graham, Morton, Howe, Meed, Thompson, Augusten, Anderson, Shupe, Arnoldy, Ford, Moon
 Hamilton, Thomas, Knott, Porter, Wilson, Noble, Moran, Freymann, Haugse, J. Suttie, Plank, Turner, Barish, Feeken, Kolezar, Shater, Traff, Rasmussen, Chapin
 Brenthal, Hunter, Burns, Burke, Swarr, Nelsen, Prout, Anderson, Carey, Hosenjager, Sinclair, Hagen, Wiechel, Wilkerson, Freshman, Anderson, Moody, Lindee, Druif, Evans,
 Carter
 Waters, Triska, Adler, Blankschein, L. Demarco, Herzberg, Traub, Gardiner, Beeler, McCague, Purdey, Modsen, White, Ruben, Broadwell, Richards, Newbranch, Clancy,
 Heinien, Lightfoot, Lipsman
 London, Carter, Moore, Gorelick, Bernstein, Shater, Hughes, Wiesman, Woodhouse, Brown, Bahula, Child, Civin, Masters, Gross, Sklar, Pangle, Albert, Sommer, Holdoebler,
 Crouse, Swartz, Hochstetler
 Moore, Rines, Redman, Basley, Griffith, Shoughnessy, DeBell, Fitzpatrick, Dolly, Miss McChesney, Miss Jones, Green, B. Maenner, Williams, Dickinson, Pomrenk, Chappel,
 Holman, Davis, Robinson, Bernstein, Church



NATIONAL THESPIANS

Nelsen, Weichel, Shupe, Holloway, Maenner, Swarr, Robinson
Crouse, Lindee, Porter, Dolly, Green, Miss Jones, Druif

EXPRESSION DEPARTMENT

To promote interest in dramatics and to offer an opportunity for students to participate in stage activities are the main objectives of the Central High Players, under the direction of Miss Frances McChesney. The club was organized in 1926, and in the fourteen years of its existence has made rapid progress in creating marked enthusiasm for advanced work in expression.

The outstanding event in the Central High Players' activities was the annual fall play, "Dollars to Doughnuts," which co-starred James Green and Catherine Fitzpatrick. This three-act comedy, written by Glenn Hughes and directed by Miss McChesney, was superbly presented and popularly acclaimed as a superior performance.

Many of the Players are members of advanced expression classes. In addition to the general study of dramatics, these classes respond to calls from any reputable organizations to present plays, give readings, and appear in other forms of entertainment.

The Speakers' Bureau, under the direction of Miss Myrna V. Jones, is a social service organization using members of the speech department to inform the student body about events of general interest. They promote drives, advertise performances, and publicize other school activities, such as athletic contests. This group has served the school nineteen years.

National Thespians, a lifetime organization beginning in the high school and continuing through college, is an honorary dramatic society with national recognition. All students in the advanced expression classes are eligible for membership.



SPEAKERS' BUREAU

Kizer, Miller, Meiches, Schulte, Rasmussen, Feeken, D. Smith, Suttie, Muller, Freymann, Bowlds, Allison,
 Baker, Parr
 Margules, Pinkovitz, Morocco, Leaf, Cozette, Jacobs, Weaver, Panska, Baird, Cohn, Malashack, Thompson,
 Stiefler
 Christie, Wainwright, Bruington, Duda, Kidd, Koleszar, Okeson, Neevel, Hronek, Barish, Sinclair, Hagen,
 Stuht, Anderson, Jones
 Meyerson, Holman, Thomas, Nelsen, Rundell, Pospichal, Wilson, Kitt, Vandagriff, Sargent, E. Smith,
 Devereux, Storz
 Redman, Crouse, Willes, Segall, Weisman, McBride, Singer, Green, Griffith, Miss Jones, Townsend, Samland,
 Colomba, Lightfoot



DISCUSSION CLUB

Cooper, Hamann, Camel, Margolin, Pinkavitz, Scholnick, Segall, A. White, M. Simon, R. Kalmansohn, Winer
 Roffman, Witkin, Davis, Linsman, Bernstein, Tyner, Grether, Silverman, B. Jensen, Fromkin, Grossman, Finer
 Myerson, Epstein, Marks, Katz, Boleski, Kuklin, D. Jensen, Gorelick, Costanzo, Z. White, Civin, E. Wolk
 Weisman, Dansky, Segall, Klaiman, Berman, Friedman, R. Simon, B. Kalmansohn, Rundell, Sellz, Crouse



TITIANS

Slater, Hindman, Wintroub, Smith, Jemma, Yuenger, Gorelick
 Lippert, N. Brandt, Clancy, Yark, Hamilton, Sorenson, Davis
 Le Baron, A. Brandt, Hefflinger, Tyler, Mrs. Jensen, Burke, Whetstone, Bryant



JUNIOR RED CROSS

Hickey, McCarthy, Ploss, Demorest, Herzberg, McCampbell, Pfeiffer, Covert
 Cappel, Burns, Hoekstra, Lyle, Anderson, Fallmer, Huntzinger, Smails
 Crouse, Pratt, Tetard, Carleton, Anderson, Pommerenk, Catlin, Edwards, Owen



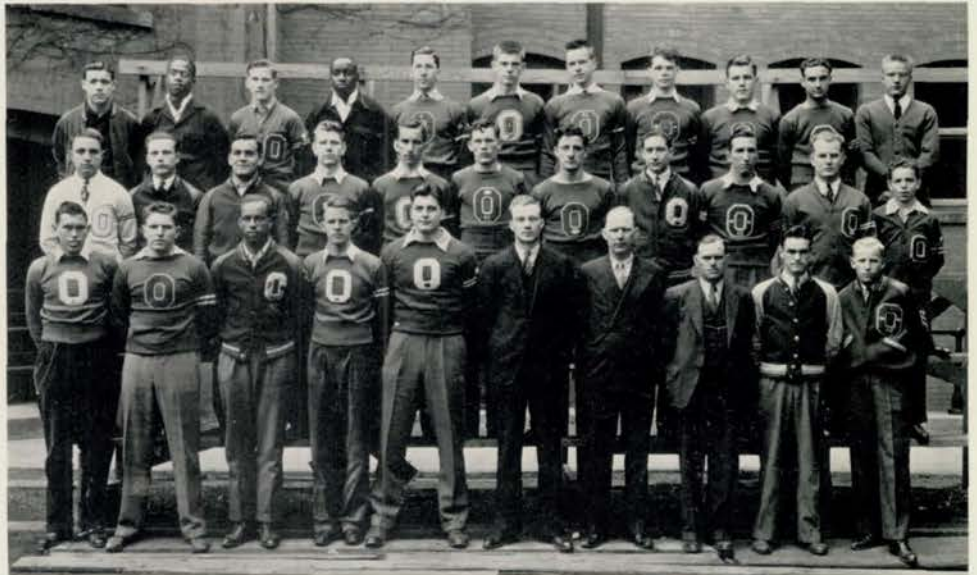
WRESTLING

G. Kriss, Milke, Kunkle, H. Baker, Poore, Kane, B. Kriss, Soland
 Baldrige, Sundsboe, Leibee, Albanese, Selden, Peck, McCarthy, Brown, Vincie, Caniglia
 Leif, Odoriso, Slyter, Christenson, Sholotsky, Stamm, Reid, Grunger, Alloy, Payton, Grabow, Bernhardt, Gaines,
 W. Produzek, Grimes, B. Produzek
 Slyter, Evans, Pattavina, L. Caniglia, Campbell, Latenser, Elshire, Scarpello, Campagna, V. Boker, Chaloupka,
 Mr. Morrison



BASEBALL

Vecchio, Wells, Cannella, Blecha, Hammer, Bernhardt, Smith, Distefano
 Parsons, Imolati, Baltzer, Minarik, Milek, Drier, Neafus, Peck
 Peltz, Ginn, Hifferman, Mr. Mason, Jones, Distefano, Cimino



FOOTBALL

Scarpello, Phillips, Parsons, Woods, Boker, Holland, Wiengarten, J. Wells, Hronek, Distefano, Johnson, Fanciullo, Munroe, Caniglia, Christenson, Forcade, Minarik, O'Brien, Amberson, Campagna, Still, Evans, Levine, Chaloupka, McDonald, Ketelsen, Westering, Mr. Sorensen, Mr. Busing, Mr. Morrison, Imolati, Ostrand



BASKETBALL

Vecchio, Neafus, Distefano, Jones, Britt, Kahley, Minarik, Carey, Mr. Busing



GOLF AND TENNIS

McIntosh, Eggers, Wells, Anderson, Greusel, Gronfield, Johnson
Smith, Wamberg, Davis, Arthur, Baldrige, Scribner, Fromkin



TRACK

Feeken, Ferryman, D. Pound, Nuquist, McDonald, Hindman, Bernstein, Levine, Weinstein
T. Pound, Gilmore, Matejka, Boker, Grither, McGee, Forcade, Spencer, Forrest, Tranisi
Allwine, Woods, D. Grimes, Kelliher, Smith, G. Grimes, Towne, Phillips, Vecchio
Poole, Fuller, Crandell, Fowler, Hronek, Raffel, Rowan, Swan, Mactier, Mr. Schmidt



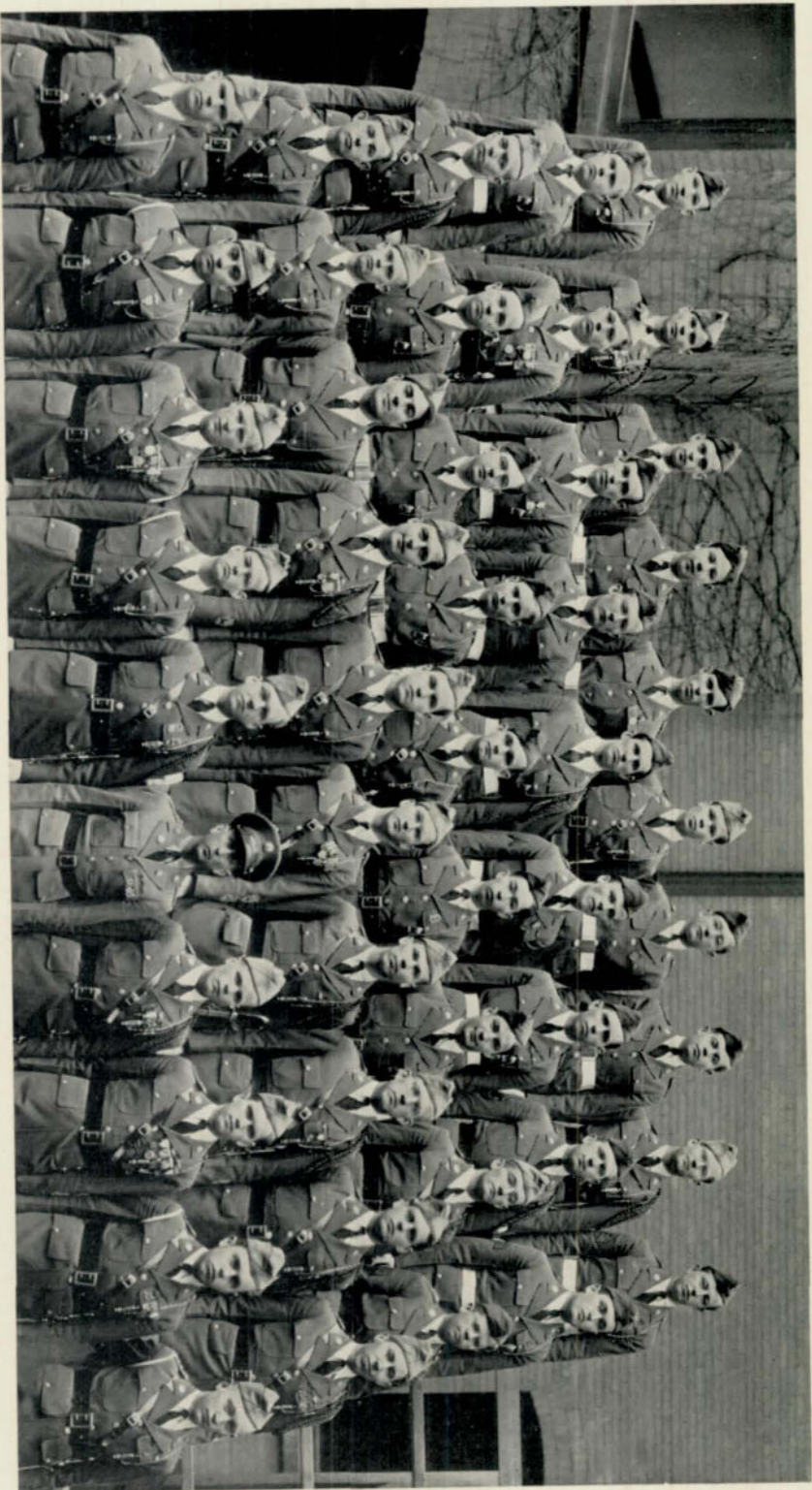
GIRLS' RIFLERY

Byrne, Hawkins, Griffin, Okeson, Scott, Shaughnessy, Lundgren, Moore, Moody, Johnson, Baliman, Munger, Koutsky, Gordon, Gilligan, Stewart, Anderson, Mayhall, Turner, Woodhouse, Huff, Hochstetler, Hassler, Coon, Salerno
 Foster, Beckwith, Colley, Petersen, Clement, Childe, Rafferty, Thompson, Jensen, Bernstein, Scott, DiMauro, Trimble, Norton, Hugenberg, Bruhn, Wilcox, Carleton, Burton, Derereux, J. Griffith, Marchant, Boien, Hoye



GIRLS' ATHLETIC ASSOCIATION

Pattavina, Snyder, Weir, Smith, Cook, Kopecky, Gasser, Franco, Longo, Gallagher, Colomba, Vernon, Dansky, Lutcavish, Poole, Shafer, Malone
 Vecchio, Haggerty, Belzer, Pattavina, Elshire, Gordon, Ellis, Roessig, Boyer, Watts, Groteluschen, Finn, Eastlack, Piccolo, MacLean, Uphoff, Chasanov
 Eyer, Gineau, Petersen, Acker, Zimmerman, E. Friend, W. Friend, Hosier, Neevel, Parise, Decker, Armintraut, Maxwell, Miller, Stams, Salerno, Vasko, Nicholson, Caniglia
 Birginal, Buzbee, Colley, Shupe, Vernon, Young, Hughes, Backlund, Winberley, Haller, Hinckley, Paul, DeMarco, Schroder, Sillstrap, Fuccio, Shrainek
 Magzamin, Gilman, Beckwith, Kulhanek, Bruhn, Boker, Segall, Cobb, Wiesman, Gray, Paterno, Utrecht, Moore, Chin, Iske, Ryan, Poison



SENIOR CADET CLUB

McDonald, Seigel, Goldsmith, Gatzmeyer, Epps, Anderson, Eastlack, Jaul, Malashock, Park
Johnson, Graham, McGee, Sistrak, Pound, Fee, Keister, Enochson, Jorgensen
Saagren, Cheek, Plotkin, Smith, Wheeler, Gates, Latenser, Jewell, Perlmann
Berman, Bailey, Pomodoro, Westering, Mactier, Arthur, Devereux, Morton, Eggers
Burstain, Koory, Steinert, MacDuff, Freymann, Sgt. Wyatt, Spier, Howe, Ryan, Hendricks



MARJORIE JOHNSON
Honorary Colonel



J. GORDON FREYMANN
Colonel, Commanding Regiment



WILLIAM C. SPIER
Lieutenant Colonel, Executive Officer

R.O.T.C. CADET OFFICERS

Colonel, Commanding
J. GORDON FREYMANN

Lieutenant Colonel,
Executive Officer
WILLIAM C. SPIER

Major,
First Battalion
HOWARD WESTERING

Major,
Second Battalion
ALFRED J. EGGERS

Major,
Supply and Ordnance
HARVEY BURSTEIN

Captain,
Regimental Adjutant
WILLIAM WHEELER

Captain, Range
ROBERT STEINERT

Captain, Company A
GEORGE DEVEREUX

Captain, Company B
MCKABER KOORY

Captain, Company C
ALFRED GARROTT

Captain, Company D
RICHARD F. HOWE

Captain, Band
NUNCIO POMIDORO

Captain, Freshman 1
PERRY B. HENDRICKS

First Lieutenant,
Commanding Freshman 2
C. WILLIAM GRAHAM

First Lt., Adjutant
Second Battalion
EDWARD MALASHOCK

First Lt., Company B
Second in Command
JERRY ANDERSON

First Lt., Company A
RICHARD SEAGREN

First Lt., Company B
ALLAN MACTIER
FRANK MacDUFF

First Lt., Company C
RAY ARTHUR

First Lt., Freshman 1
JOHN RYAN

First Lt., Freshman 2
CHARLES H. MORTON
JOHN L. BERMAN

Second Lt., Staff
ARTHUR BENOLKEN

Second Lt., Adjutant
First Battalion
ISADORE SEIGEL

Second Lt., Company C
Second in Command
WILLIAM BAILEY

Second Lt., Company D
Second in Command
KEITH R. JEWELL

Second Lt., Band
Second in Command
LESLIE D. GATES

Second Lt., Company A
WILLIAM B. MAGEE
RICHARD B. CHEEK
JOHN F. LATENSER
ROBERT PETERSEN
DONALD J. POUND

Second Lt., Company C
RICHARD C. SMITH

Second Lt., Company D
RICHARD K. ENOCHSON
RICHARD FORCADE



HOWARD WESTERING
Major, First Battalion



HARVEY BURSTEIN
Major, Supply and Ordnance



ALFRED EGGERS
Major, Second Battalion



CRACK SQUAD

Simon, Creedon, Merchant, Caldwell, Ploss, Johnson, Weingarten, Knoll, Anderson, Kline, Milek, Grimes,
 Holmes, Loomis, Rector
 Sergeant Wyatt, Munger, Pound, Baldrige, Hindman, Enochson, Spier,
 Jewell



SILENT PLATOON

Polansky, Simons, Callahan, Wilson, Pavlik, Nordstrom, Segal, Christiansen
 Silverman, Greusel, Kruse, Petersen, Burkett, Auracher, Potash, Rossiter
 McCartney, Smith, Marsh, Freymann, Hendricks, Katzman, Knudsen, Trustin, Cherwitz



RIFLE TEAM

Seigel, Munger, Jorgensen
 Magee, Bowlds, Weber, McMurray
 Miller, Eggers, Lepinski, Howe
 Sergeant Wyatt, Suttie, Devereux, Steinert, Petersen, Graham



ENGINEERS

Turkel, Latenser, Merchant, Keister, Best, Schwartz
 Nordstrom, Rector, Simons, Greusel, Silverman, Trustin
 Smith, Sylvester, Ryan, Sergeant Wyatt, Howe, Gates



LATIN CLUB

R. Johnson, Jensen, G. Loomis, Gilinsky, Creedon, H. Johnson, G. Grimes, Klopp, Gaines, Friedman, Crossman, Kalmansohn
 Joseph, Fitzpatrick, Humlichek, J. Johnson, Everett, Harrington, Ensor, Friend, Eckstrand, Boyer, Hoyer, Cherwitz
 Kidd, Lacina, Davis, Allen, Brogan, D. Grimes, Louckes, Baldrige, Howard, Hughes, Gaden, Lyle
 Linde, Larson, Brock, Halbrook, Knudsen, Gould, Busch, N. Loomis, Bennett, Dickinson, I. Johnson, Duff, Coon



LATIN CLUB

Smith, Olson, Scribner, Williams, Sibbersen, Scholnick, Phillips, Stryker, C. Rosenstock, Poppas, Mugas
 Smalls, Payne, Merrill, Wilcox, Okeson, Turner, Osborne, Manske, Reynolds, J. Rosenstock, Young, Nordstrom
 Middleton, Okerbloom, Rozmajzl, Nordeen, Sellers, Mead, McCague, Savidge, York, Marvin, Surface, Robinson
 Nigro, Taylor, Ralston, Steberg, B. Taylor, McConnelee, Palmquist, Taxman, Wade, Moore, Shields



FRENCH CLUB

Heyn, Evans, Willsie, Roffman, Shupe, Freshman, Kopecky, Cramer, Simon, Bussing, Dansky, Shafer
 Sommer, Vanecek, Wohlner, Gross, Riekas, Abramson, Sunderman, Drishaus, Meyers, Huff, Hosman, Hunt-
 zinger, Rubenstein
 Adler, Cohn, Greenberg, Wiese, Clements, Randall, Borg, Turner, Salerno, Curtis, F. Rundell, Nimmo, Cohen
 Iske, Mallinson, Evans, Bebb, Cronland, Osborne, Miss Bozell, Griess, Thummel, Shoening, M. Rundell,
 Clancy, Hochstetler



FRENCH CLUB

Rector, Allison, Hull, Zwiebel, Weaver, Williams, Jewell, Rasmussen, Philbrook, Filippi, Carey, Anderson,
 Plank, Forcade, Enochson, Scribner, S. Smith, Jacobson, B. Perelman
 Blankschsin, Tully, Templeton, Wilson, M. Smith, Hagen, Stuht, L. Moore, Neuhaus, W. Meade, Rubnitz,
 Taxman, Scott, Levine, Rowsey, Schurtz, Bruett, Christensen
 Smails, Nelsen, I. Johnson, Young, Protzman, Stepanek, Vandagriff, Hoekstra, P. Meade, Carlberg, P.
 Johnson, McCague, Richards, Conley, L. Perelman, J. Moore, Masters, Hochstetler, Christie,
 Waechter, Owen, Carter
 Bordy, Thomas, Swoboda, Savidge, Sargant, Veber, Sellers, Butler, Whited, Porter, Chrisinger, Duda, Fish-
 berg, Pasner, Tomselt, Vicek, Sommer, Knott, LeBaron, Moody, Dailard, DeLacy, Edwards, Ludacka
 Brockman, Brown, Greenberg, Fox, Petersen, Palmquist, Randall, Beck, Bihler, Purdy, Rosenstein, Rafferty,
 O'Neal, Hoedobler, Colley, Rappke, Ellsworth, Peycke, Huston, Huntzinger, Meinzen, Hawkins,
 Wainwright
 Slater, Satrapa, Harris, Mackley, Dickinson, Sherman, Tyler, Werthiemer, Griess, Burke, Freyman, Howe,
 Noble, Allan, M. Johnson, Maenner, Busch, Lyle, Loomis, Thompson, Trachtenberg, Brumbeau,
 Swarr, Klein



GERMAN CLUB

Mayhall, Borghoff, Latenser, Plank, Sheridan, Smith
 Margolin, Drdla, Fee, Cozette, Castro, Jaul
 Visek, Niess, Weir, Elsasser, Mohr, Kinder, Miss Rindone



SPANISH CLUB

Schwartz, Malashock, B. Brown, Robison, Coyne, Jones, Cooper, Feltman, A. White, Eastlack, Hammer
 Saylan, Camel, Sundshoe, Burkett, Crusel, Halbrook, MacMurray, D. Walton, Peterson, Lashinsky, Halprin
 Lorkis, P. Wintroub, Sgroi, Gleason, Z. White, Rapp, Wright, Weisman, Perelman, Malm, R. Walton, Wolfson
 Bakewell, Wine, L. Wintroub, Wasserman, Merrimam, Goldberg, Singer, Anderson, Minnis, Haller, Ossino



ROLLER SKATING CLUB

Park, Neafus, Wemmer, Sacco, Schoultz, Smith, Suttie, Shupe, Wilson, D. Paterno, Rohan
 VanÉvert, Perelman, Trapp, Wells, G. Thomas, Weisman, W. Friend, Veber, M. Swoboda, Shafer, Weiner,
 P. Payne, Geitman
 Razinski, Slater, Vasko, R. Peterson, Riekes, Taxman, Roadhouse, J. Rapp, Wahlstrom, D. Simmons, Rada-
 ziner, Pellisero, K. Poole, Zuzman
 Wilson, L. Paterno, Pospichal, Reed, Whited, Reynolds, Zachek, Randall, Rubin, Z. White, Salerno, D. Swan-
 son, Wertheimer
 Sadofsky, Noble, Reznicek, Weiser, Staenberg, Vacanti, Sinclair, Miss Patterson, Hagen, M. Robinson, G.
 Wolk, E. Wolk



ROLLER SKATING CLUB

Dethlefs, D. Magee, Keister, Capoccia, Feeken, Fee, B. Magee, Knudsen, Friedman, Britton, Holloway,
 Lustgarten, Bernstein, Goldsmith, Gatzemeyer
 Carter, Kaulitz, Fromkin, L. Greenspan, Lange, Fuller, Clements, Borg, D. Larson, Billig, McCarthy, P. Larson,
 Marchant, LeBaron, Evans, Kennedy
 Baughman, Hamilton, Carlson, Dohse, Bahula, Enos, Merrill, Griffin, Friend, Lutcavish, Lincoln, Fox, Cohn,
 Chapin, Blumkin, Meyerson
 Coon, Kirk, McKenna, Gleason, Jacobson, Loeck, Brewer, Boien, Falk, Kraft, Anderson, Gross, Elsasser,
 Kinder, Broadwill, Edwards, Augustson
 B. Carter, Douglas, Miller, Middleton, E. Carter, Gilligan, Iske, Madsen, S. Greenspan, Huff, Miss Hoegemeyer,
 Cronland, Carlson, Hochstetler, Magzamin, Kolnick



COLLEENS

Carlson, Perelman, Lincoln, Sinclair, Hagen, Johnson, Holbrook, Conlin, Neuhaus, Devereux, Coad, Ring, Jeanoles
 Swartz, Lindee, Levine, Bernstein, Bussing, Reynolds, Taylor, Evans, Baywright, Boien, McKenna, Blumkin
 Church, Macchietto, Finer, Larese, F. Scott, Beck, Johnson, Tetard, Huff, Taxman, Holman, Christie
 Klein, Johnson, Cappell, Davis, Cronland, Maenner, Griffith, Noble, Carleton, Smith, M. Scott, Knott, London



COLLEENS

Edwards, Brondt, Rundell, Okeson, Clarke, Kadis, Young, Negus, Fitzpatrick, Kazeros, Friedman, Henrie, Carmichael
 Slater, Ruffcorn, Sperl, Simon, Neuhaus, Mayhall, Hubbard, Payne, Simpson, Decker, Chamberlain, Magassus
 Bruhn, Heimrod, Smith, Carlberg, Hoekstra, Albough, Hinrichs, Brock, Finlayson, Surface, Byrne, Ossino
 Ludacka, Rosenberg, Marvin, Dickinson, Burton, Purdy, L. J. Greenberg, Turner, Sinton, Petersen, Craft, Mackley, Tuchman
 Mayer, Wahiquist, Lightfoot, Norton, Protzman, Pratt, J. Greenberg, Palmquist, Krecek, McConnelee, Belmont, Singer



COLLEENS

Mohr, Broadwell, Dohse, Buzbee, Rosenstein, L. Moore, George, Walton, Clement, Reichstadt, Miller, Hultman, Taylor
 Trimble, Crummer, Stepanek, Wahlner, Butterworth, Hughes, Gantz, Walsh, Armintrot, J. Moore, Joseph, Druif, Carlson, Marchesi
 Chin, Vanecsek, Visek, Hamilton, Merrill, Marcus, Harrington, Gaden, Loomis, Wilcox, York, Manske, Koleszar, Faulkenberry, M. Thomas, Robinson
 Thomas, Wainwright, Farber, Veber, Allen, Weiss, Lyle, Busch, Gardiner, Nauman, Zajicek, Ensor, Phelan, Shafer, Weiner, Satrapa
 Smails, Griess, Catlin, Edwards, De Lacy, Burke, Osborne, McIntyre, Madsen, Reed, Huston, Marchant, Hoeldobler, Pangle



COLLEENS

Beasley, Leon, Noland, Schierbaum, Waters, Bryant, Covert, Hassler, Clayman, Sommer, Carmichael, Gilman
 Crouse, Marks, Kirk, Dansky, Kulhanek, Thomas, Phillips, Wilcox, Abramson, Riekes, Katz, Civin
 Wolfson, White, Kidd, Fishberg, Soukup, Sellers, Bihler, Childe, Rosenstock, Conley, Porter, Parashus
 Tvrdy, Epstein, Malm, Rundell, Sims, Fitzpatrick, Schoening, Anderson, Wagner, Rafferty, Marks, Sherman
 Burns, Rubin, Wiesman, Johnson, Baliman, Swarr, Nelsen, Salerno, Pegler, Follmer, Drexel, Feeken



LININGER TRAVEL CLUB

Hackett, Scott, Steberg, Huff, Taylor, Meyer, Heyn, Crummer, Reynolds, Willsie, Matcha, Osborne, Cramer, Halbrook, Conlin, Neuhaus, Hamilton, Waters, Devereux, Baright, Coad, Wilcox, Allen, Rosenstock, Riekes, Hosman, Sunderman, Roadhouse, Hoyer, Wade, Evans, Trimble, Nigro, Vanecek, Davis, Perelman, Claassen, Vlcek, Pospichal, Brock, Broadwell, York, Church, Byrne, Visek, Johnson, Cranland, Koleszar, Manski, McConelee, Faulkenberry, Chamberlain



LININGER TRAVEL CLUB

Young, Lahr, Protzman, Sinclair, Neuhaus, Stuht, Hagen, Veber, Ganz, Smith, Townsend, Foote, Masters, Duda, Slattery, Linde, Christie, DeBelle, Tyler, Butler, Gardiner, Willmarth, Macklay, Savidge, Swoboda, Slater, Pangle, Kirk, McKenna, Larson, Whited, Purdee, Mead, Peycke, Gaden, Cappel, De Lacy, Harris, Bernstein, Ralston, Dickinson, Drexel, Rapp, Ensor, Mohr, Rothkop, Anderson, Lyle, Sargent, Loomis, Allan, Chrisinger, Satrapa, Hawkins, Newbranch, Smails, Lincoln, Shaughnessey, McCague, Busch, Payne, Bruington, Kennedy, Shields, Moore



LININGER TRAVEL CLUB

Porter, Edwards, Johnson, Hughes, Jensen, L. Moore, Griffith, Smith, Thompson, Scott, J. Moore, Druif, Marchant
 Horan, Burns, Pommerenk, Taxman, Wilkerson, Hoekstra, Hinrichs, Carleton, Herzberg, George, Payne, Maag, Parashus
 Waechter, Phelan, Nelsen, V. Traub, Negus, Chleborad, Smith, McIntyre, Fitzpatrick, Katz, Crounse, Robinson, Holman
 D. Thomas, Swarr, Burke, Conley, Weisman, Reed, Scott, Wohlner, Schurman, Rosenstein, Hubbard, White, Belmont, Owen
 Carter, Schurtz, Bruett, Beasley, Meyer, Pegler, Pratt, Catlin, Griess, Knott, Wainwright, Feeken, Farber

LININGER TRAVEL CLUB

Lininger Travel Club, the oldest club at Central High School, was organized in 1903 and named after Henry Lininger, a noted traveler and explorer who lived in Omaha.

The present officers of the club are Pat Catlin, president; Phyllis Griess, vice-president; Sally Busch, secretary; Adelaide McCague, treasurer; Marie Knott, Barbara Payne, Emily Reynolds, and Eileen Wainwright, sergeants at arms. Miss Mary Parker, Mrs. Grace Knott, Miss Adrian Westberg, Miss Maybel Burns, Miss May Mahoney, and Miss Helen McCoid are faculty sponsors.

The club has a membership of 200 girls, the largest in its history. In order to create a more friendly feeling among the girls, five committees were formed: charity, friendship, hospital, program, and publicity. Each committee consists of about twenty girls. Chairmen of the committees are Jean Pratt, Margaret Carleton, Lois Hinrichs, Margaret Smith, and Virginia Gantz.

The projects of the club this year included furnishing aid to a hospital in Kentucky, as well as sending groceries and clothing at Thanksgiving and Easter to a worthy family which Lininger Travel club has aided for many years.

From time to time travel speakers told the club of their experiences from coast to coast and around the globe.



MATHEMATICS SOCIETY

McAvin, Gerber, Matejka, Amberson, Auguston, Kline, Howe, Farquhar, Hronek, Witkin
 Swaboda, Neuhaus, Templeton, Weinstein, Abariotis, Stiefler, Rice, Larson, Kolnick
 Plotkin, Eisenstatt, Howard, Tyner, Anderson, Gates, Iske, Poole
 Peycke, Bell, Spier, Eggers, Arthur, Seagren, Gatzmeyer, Goldsmith, Margules



GREENWICH VILLAGERS

Slattery, De Bell, Roddy, Stone, Conlin, Neuhaus, Hughes, Koldborg, Pellisero, Hassler
 Slater, Coffin, Steinbaugh, McDonald, Bussing, Herzberg, Harrington, Coad, Ellsworth, Stepanek, Taylor
 Miller, Visek, Boleski, Rundell, Reichstadt, Thorndike, Johnson, Lahr, Schurman, Whited, Zlotky, Karlen
 Hochstetler, Wiese, Loeck, Klein, Rosenstein, Beck, Tetard, Dailard, Rothkop, Gantz, Rezek



CHESS CLUB

Robinson, Margolin, Davis, Lambert, Scholnick, Polonsky
 Grunger, Camel, Miller, Anderson, Hamlin, Phillbrook
 Konecky, Klaver, Morgenstern, White, Halprin, Wolfson



CAMERA CLUB

McLellan, Jack Latenser, Weaver, Borg, Anderson, Jim Latenser, Morton, Farquhar
 Decker, Padell, Murphy, Jewell, Gantz, Segall, McCarthy, Perelman, Ruffcorn
 Satrappa, Bryant, Drexel, Mr. Thatcher, Kulakofsky, Wahliquist, Hochstetler, Pangle



GIRL RESERVES

Barnes, Mueller, Sorenson, Luecke, Domet, Sequenzie, Percival, LeBaron, Bakewell, Nystrom, Dieter, Shestck
 Kreck, Sperl, Kaplan, Rimmerman, Decker, Tarson, Hawkinson, Randall, Ware, Garton, Jansen, Brandt
 Lachinsky, Cooper, Charleton, Paul, McCaffrey, Petersen, Vajgrt, Virgiletto, Pospichal, Malm, Toves, Man-
 giamelli, Updigrove, Brooks
 Meyerson, Niess, Miller, Olbrey, Finklestein, Wiesman, Love, Kazeros, Arselson, Blazek, Ruess, Erandt, Iske,
 Mugasis
 Harpoole, Costanzo, Samland, Jensen, Graves, Miss Weymuller, Miss Johnson, Miss Tauchen, Kratz, Benda
 Poole, Ossino, Tupy



Hi-Y

Pavlick, Loomis, Zwiebel, Kline, Magee, Levine, Neafus, Enochson, Bernhard
 Hronek, Holmes, Latenser, Merchant, Pound, Arthur, Forcade, Menace, Caldwell
 Macduff, Spier, Jewell, Freymann, Eggers, Amberson, Howe, Devereaux, Farquhar, Nipper







Printing . . . DOUGLAS PRINTING COMPANY
Engraving . . . BAKER ENGRAVING COMPANY
Plastic Binding . . . U. S. Pat. No. 1970285
TRADE BULING COMPANY