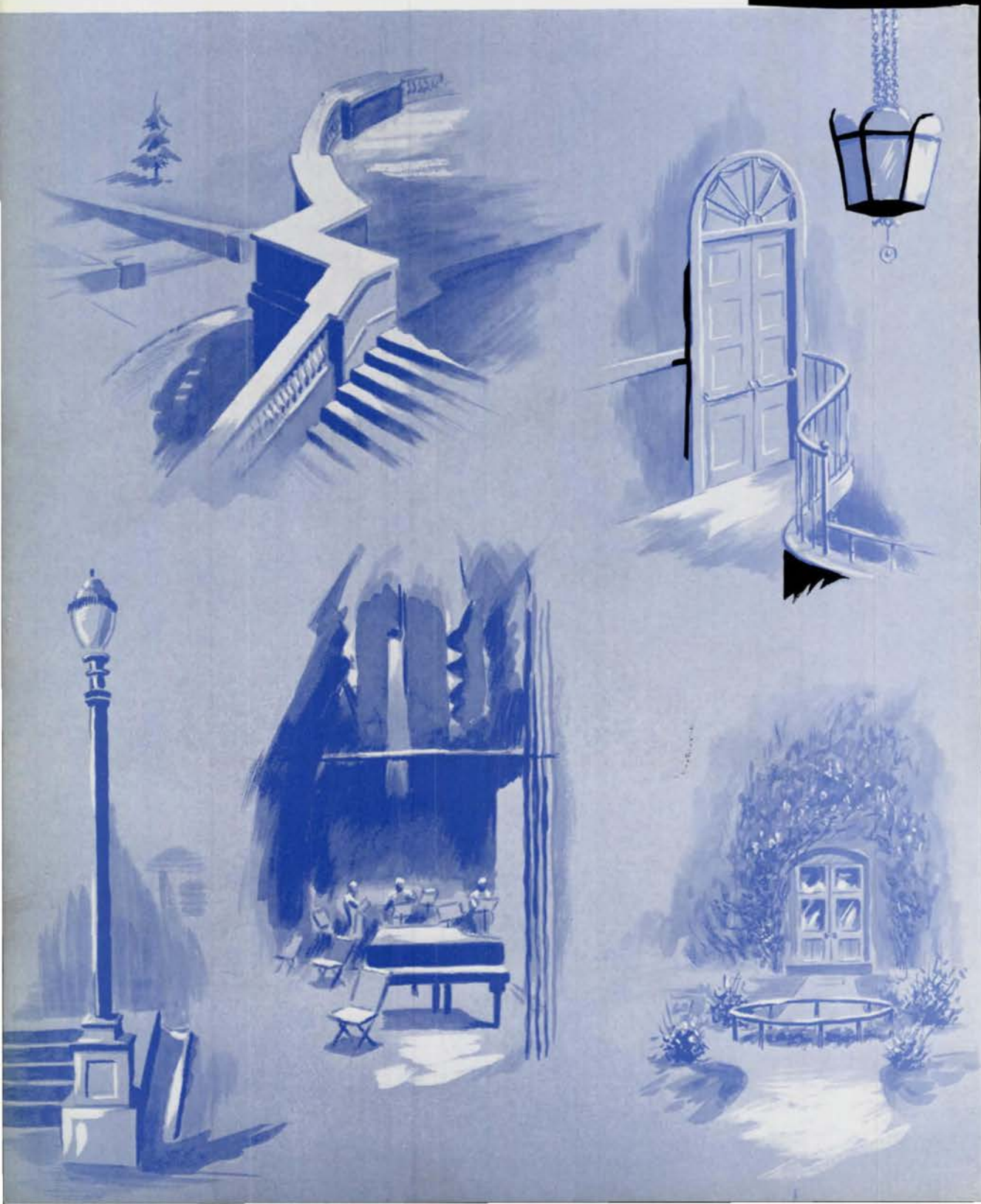


O-BOOK



Jepsen





Jepsen



Joseph G. Masters . . . principal

O-BOOK

Central High School

SENIOR CLASS



OMAHA, NEBRASKA

VOLUME LI

1937 8



South Entrance . . . Central High School

Staff

Editor-in-Chief

Charles E. Harris

Associate Editors

Betty Knox

George Morton

Mildred Laytin

Ernie James

Olive Odorisio

Art Editor

Inez Corkin

Auditor

Walter H. Jones, Jr.

Circulation Manager

Harry H. Devereux

Literary Adviser

Anne Lane Savidge

Art Adviser

Mary L. Angood

Business Adviser

O. J. Franklin

Senior Class Sponsors

Augusta Kibler, executive sponsor

Julia T. Carlson

Elmer B. Mortensen

Frank Rice

Juliette Griffin

Margaret A. Mueller

J. G. Schmidt



Doctor Senter



Miss Stringer

Ave Atque Vale

Retiring this year are two faculty members who have much in common. Both are Nebraska born and educated, are members of Phi Beta Kappa and Sigma Xi. Both are scholars who have devoted many years to the teaching of science. Both take an extreme interest in their students.

Their scientific training speaks for itself. Miss Caroline Stringer has worked for a number of years in Harvard Research Laboratories and at biological stations on the Atlantic and Pacific coasts. Her special interest lies in Turbellaria. Doctor Herbert A. Senter received his doctorate from Heidelberg, Germany. His work in chemistry is along organic lines. He is also interested in mineralogy. In praise of him Chancellor Avery has stated: "Doctor Senter is a chemist of distinction, a great teacher, and a leader in the organization of chemical instruction."

Doctor Senter came to Central High school to teach chemistry in 1897; Miss Stringer came as head of the Natural Science department in 1904. It is a fortunate high school that, for unbroken periods of forty and thirty-three years, can appropriate such superior preparation and teaching power.

But sentimentally considered, within our walls the absence of these two personalities will be felt at every turn. How, for instance, shall Central High envisage the almost automatic bookroom lacking the stern-kind-playful presence of Doctor Senter? As Dean of the Faculty he has kept teachers, too, in their proper place. How shall we get along without those interesting glimpses into the natural world that Miss Stringer has so ably given us? How shall we thrive unsupported by her faith in honest words and work?

To those two ingenious and constant teachers, what recompense for their unflagging service? An airy but precious something: self-satisfaction and the friendship of literally thousands of enlightened pupils. As to their future — tomorrow to fresh research and publications new!

Central High School Faculty

FRED HILL
Assistant Principal
Dean of Boys

JOSEPH G. MASTERS
Principal

DR. H. A. SENTER
Dean of Faculty

JESSIE M. TOWNE
Assistant Principal
Dean of Girls

English

Sara Vore Taylor
Bertha Neale
Tillie C. Anderberry
Nell Bridenbaugh
Julia T. Carlson
Augusta Kibler
Grace H. McManus
Margaret A. Mueller
Frank M. Rice
Anne Lane Savidge
Helen L. Sommer
Louise Stegner
Martina Swensen
Jessie M. Towne
Ida A. Ward
Alice West

Mathematics

Fred Hill
Amanda E. Anderson
G. E. Barnhill
R. B. Bedell
L. N. Bexten
Maybel Burns
Grace Fawthrop
Pearl Judkins
Sarah A. Ryan

History

Geneive W. Clark
Irma Costello
Mary E. Elliott
Edith C. Field
Elsie Fisher
Juliette Griffin
Elizabeth Kiewit
Mary A. Parker
Nelle Randall

Modern Languages

Marjorie A. Boyd
Bess M. Bozell
Charles M. Justice
May Mahoney
Ruth H. Pilling
Margarita Vartanian
Margaret West

Latin

Bernice S. Engle
Josephine Frisbie
Ruth H. Pilling
Bessie S. Rathbun
Margaret West

Physical Science

F. H. Gulgard
J. G. Schmidt
Dr. H. A. Senter

Natural Science

Caroline E. Stringer
Jennie E. Hultman
Helen C. Lane

Social Science

Autumn Davies
F. Y. Knapple
Edith C. Field

Debate

Sarah A. Ryan
Elmer B. Mortensen

Expression

Myrna Vance Jones
Frances McChesney

Music

Carol M. Pitts
Irene Haskins Jensen
Elsie Howe Swanson
Henry G. Cox
Lylyan Chudacoff

Mechanical Drawing

O. J. Franklin

Manual Training

L. N. Bexten

Art

Mary L. Angood
Florence E. Power

Journalism

Anne Lane Savidge

Commercial

Edna S. Dana
Dorothy D. Anderson
Ada Ewing
Lillian Greenberg
Esther M. Johnson
Gertrude Knie
Grace M. Knott
Angeline Tauchen

Household Arts

Chloe Stockard
Lois Newell
Ruby Richardson

Physical Training

Marian Treat
Charles M. Justice

Freshman Counselors

Irene Haskins Jensen
F. Y. Knapple

School Treasurer

O. J. Franklin

Cafeteria

Ruby Richardson

Library

Zora Shields
Catherine S. Blanchard
Hazel C. Stewart

Office

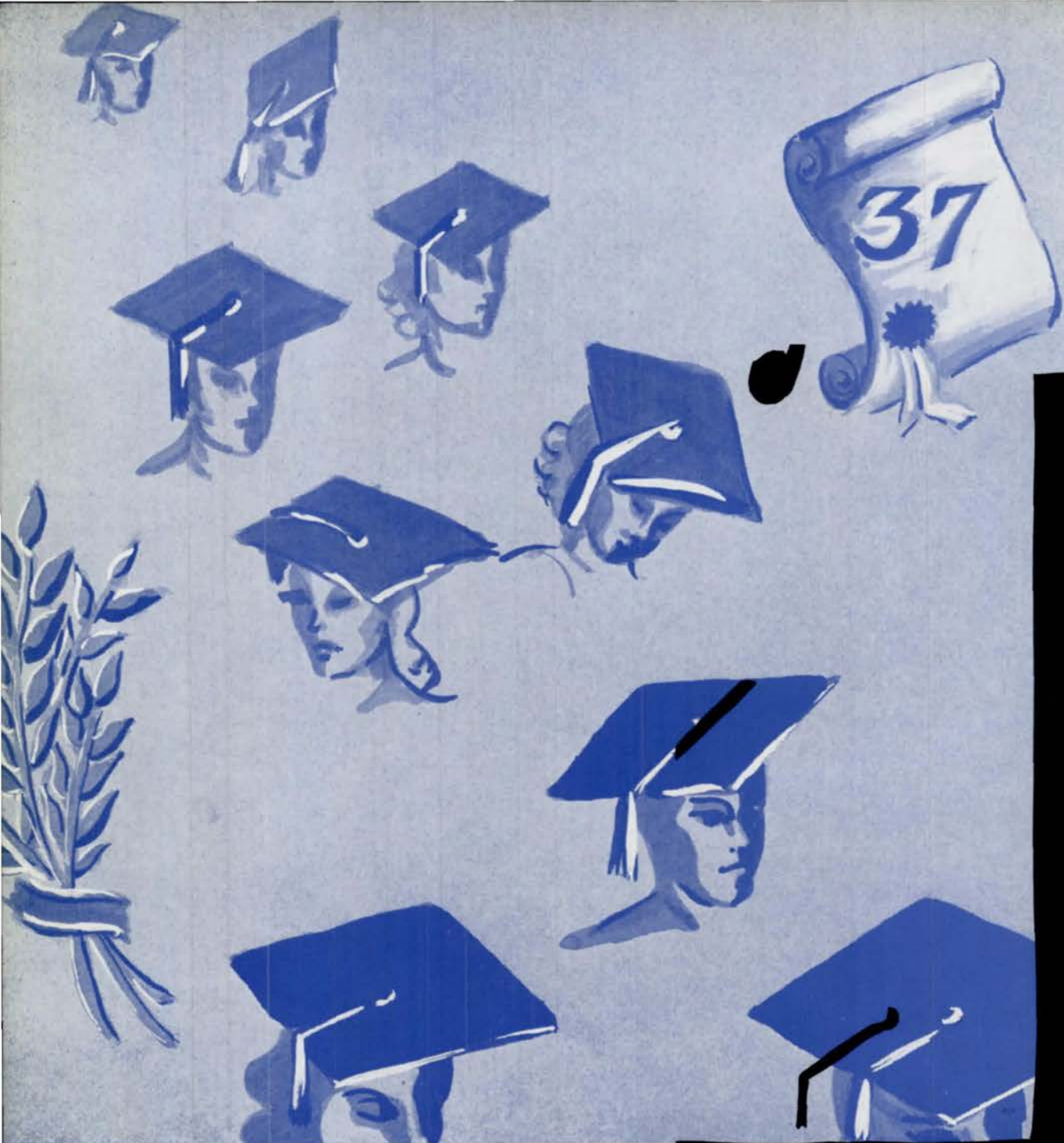
Adrian Westberg
Dorothy Barber
Helen E. Davis

Clerk of Bookroom

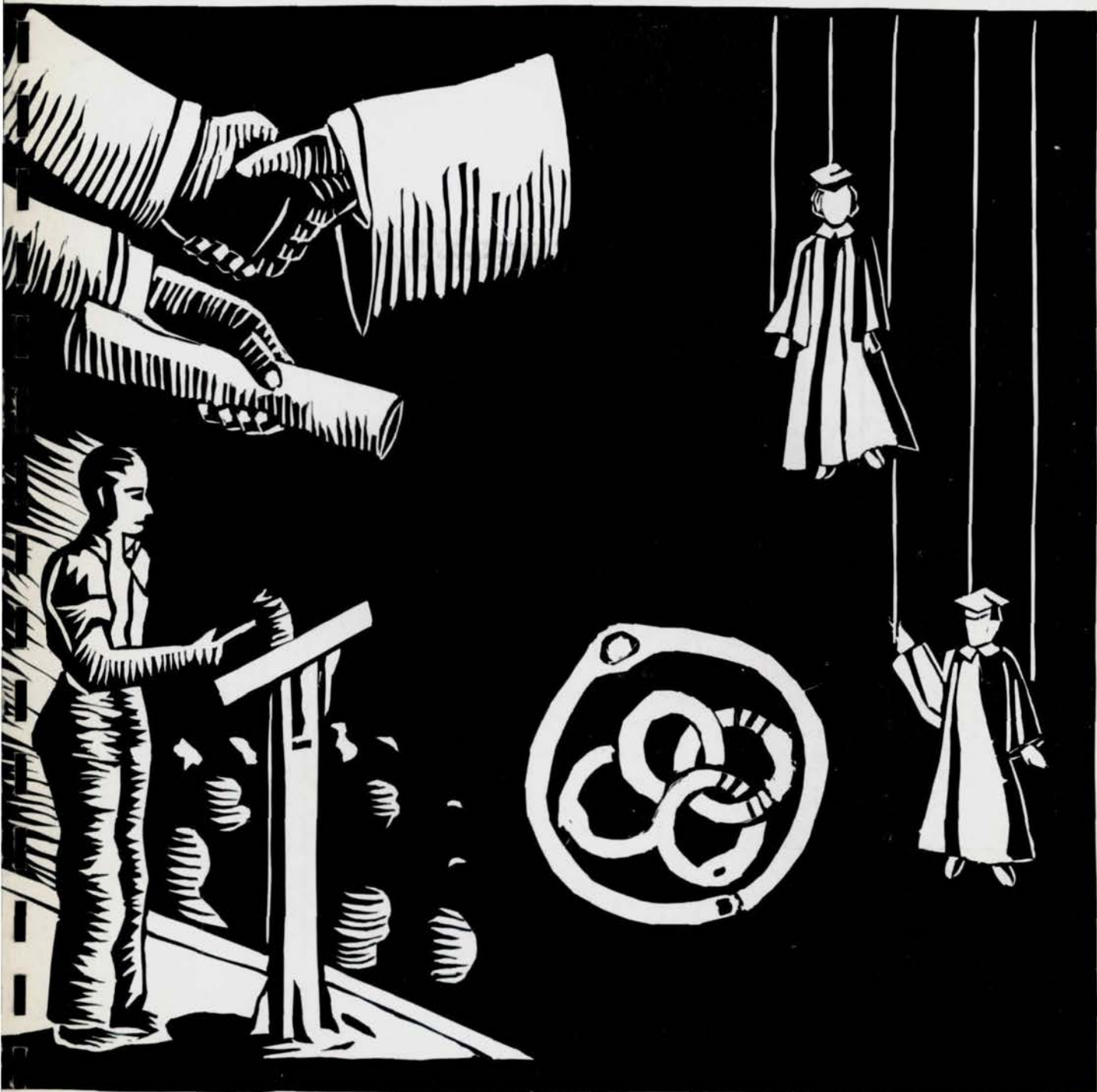
Mildred Goosman

Attendance Clerk

Thelma Moss



Farquhar, Byerly, Mortensen





Edmund O. Barker

NATIONAL HONOR SOCIETY

President, June. Regiment (1,2,3,4), Second Lieutenant (4); C.O.C. (4); Tennis (2,3); Intramural Sports (3,4); Junior Honor Society (1,2,3); First Prize S. A. Ticket Sale (2); Second Prize S. A. Ticket Sale (3); Mathematics Society (1,2,3,4); Gentlemen's French Club (1,2,3,4), Sergeant-at-Arms (3), President (4); Speakers' Bureau (1,2,3,4); Central High Players (2); Motor Club (3); Road Show (4); Junior Red Cross (3,4), President (4); Junior Red Cross Council (4), President (4); Hi-Y (1,2,3,4), Vice-President (4), Treasurer (2); Senior Play (4)

Dorothy Larson

President, January. Student Control (3,4); Swimming (1,2); Library Monitor (4)



Verne Moore

Vice-President, June. Regiment (1,2,3,4), Second Lieutenant (4); C.O.C. (4); Baseball (1,2,3); Basketball (1,2); Football (1,2,3); National Athletic Honor Society (3); Boys' O-Club (2,3,4); Latin Club (2); Road Show (3,4); Register Representative (4); Senior Play (4)

Christa Ensminger

Treasurer, January. Basketball (1,2,3,4); Baseball (1,2,3); G.A.A. (1,2,3,4), Treasurer (4); Home Economics Club (1); Volleyball (1,2,4); Health Play (2); Hockey (2); Junior Society (3); Student Control (4); Library Monitor (4)



Lee Grimes

NATIONAL HONOR SOCIETY

Secretary, June. Regiment (1,2,3,4), Major (4); C.O.C. (4), Sergeant-at-Arms (4); Crack Squad (3); Football (2,4); Boys' Rifle Team (3); Library Monitor (4); Junior Honor Society (1,2,3); Hi-Y (2,3); Road Show (3,4); Boys' O-Club (4); Boys' Junior Glee Club (1); Boys' Senior Glee Club (1); Loquax (2,3); Central Committee (2,3,4), Vice-President (4); Mathematics Society (2,3,4), President (4), Senior Play (4)

Abram Dansky

NATIONAL HONOR SOCIETY

Parliamentarian, June. Regiment (1); Register Staff (3,4); Gentlemen's French Club (3,4); Student Control (1,3); Boys' Junior Glee Club (1); Boys' Senior Glee Club (1); A Cappella Choir (2,3,4); Central High Players (3,4); Latin Club (2); Opera (2,3,4); Road Show (3,4); French Play (3); Junior Honor Society (1,2,3); National Music Supervisor's Convention (2); State Music Contest (3); District Music Contest (3); Register Representative (1,3); S. A. Ticket Prize Winner (4); Quill and Scroll (4)



Charles F. McManus

NATIONAL HONOR SOCIETY

Treasurer, June. Regiment (1,2,3,4), Captain (4); Engineers (3,4); Crack Squad (3); C.O.C. (4); Parliamentarian (4); Loquax (2,3), Advertising Manager (3); Mathematics Society (4); Monitors' Council (4), Chairman (4); Student Control (2,3); Speakers' Bureau (2); Latin Club (2,3), Treasurer (3); Road Show (3,4), Assistant Manager (4); Athletic Manager (3,4); Junior Honor Society (2,3); Library Monitor (4)

Joy Yousem

Reporter, June. Register Staff (4), Correspondent (4); O-Book Staff (4); Lininger Travel Club (4); Central Colleens (1,2,3); Student Control (2); Library Monitor (4); Press Club (3,4), Secretary-Treasurer (4); Register Representative (2); Senior Committee (4); Quill and Scroll (4)



Natalie V. Buchanan

NATIONAL HONOR SOCIETY

Sergeant-at-Arms, June. Register Staff (4), Book Editor (4); O-Book Staff (4); Central Committee (4); Greenwich Villagers (2,3,4), Reporter (4); Central Colleens (2,3,4); Student Control (3,4); Register Representative (4); Press Club (4); Junior Honor Society (1,2,3); Library Monitor (4); Quill and Scroll (4)

Robert Bernstein

Sergeant-at-Arms, June. Regiment (1,2,3,4), Lieutenant Colonel (4); Engineers (4); Crack Squad (3); Crack Platoon (1); Track (2); O-Book Staff (4); Mathematics Society (3,4); Boys' Junior Glee Club (1); Boys' Senior Glee Club (1); A Cappella Choir (2); C.O.C. (4), Vice-President (4); Opera (2); Road Show (3)

Charles E. Harris

Regiment (1,2); Register Staff (2,3,4), Make-Up Editor (2,3), Managing Editor (4); O-Book Staff (4), Editor-in-Chief (4); Loquax (3), Make-Up Editor (3); Student Control (2,3); Speakers' Bureau (2,3,4); Boys' O-Club (3,4); Latin Club (2,3), Sergeant-at-Arms (3); Opera (3); Road Show (1,2); Golf Tournament (2,3,4); Golf Team (3); Junior Honor Society (3); Quill and Scroll (3,4); Press Club (3,4), Vice-President (3), President (4); Motor Club (3); Register Representative (1); State Press Convention (4); Stamp Club (3), Vice-President (3); First Prize S. A. Ticket Sale (4)

Harry H. Devereux

Regiment (1,2,3,4), Second Lieutenant (4); O-Book Staff (4), Circulation Manager (4); Mathematics Society (1,2,3,4), Treasurer (4); Library Monitor (4); Monitors' Council (4); Student Control (3); C.O.C. (4); Central High Players (1); Opera (4); Road Show (1,3,4); French Play (1); Engineers (3); Swimming (1); Track (2); Make-Up (1); Property Crew (3,4); Motor Club (3); Hi-Y (2); Register Representative (3); Quill and Scroll (4); Press Club (4); Senior Play (4)

Bette Jane Knox

NATIONAL HONOR SOCIETY

Register Staff (4), Make-Up Editor (4); O-Book Staff (4), Editor of Senior Album (4); Central Committee (4); Press Club (4); State Press Convention (4); Girls' Junior Glee Club (1); Girls' Senior Glee Club (1); A Cappella Choir (2,3,4); Spring Festival (1,2,3,4); Lininger Travel Club (3,4); Latin Club (2); Opera (2,4); Road Show (3,4); Motor Club (3); Library Monitor (4); Junior Honor Society (1,2,3); Quill and Scroll (4)

Mildred Laytin

NATIONAL HONOR SOCIETY

Register Staff (4); O-Book Staff (4), Associate Editor (4); Press Club (3,4); Junior Honor Society (1,2,3); Student Control (2,3,4); Central Colleens (2,3,4); Motor Club (3); G.A.A. (1,2,3,4), Sergeant-at-Arms (2), Secretary (3), President (4); Volleyball (1,2,3,4); Baseball (1,2,3,4); Hockey (3); Basketball (1,2,3); Quill and Scroll (4); Second Prize S. A. Ticket Sale (4); 140 Shorthand Medal (4); Library Monitor (4)

Virginia Lee Pratt

NATIONAL HONOR SOCIETY

O-Book Staff (4); Central Committee (2,3,4), Secretary (3); Lininger Travel Club (1,2,3), Sergeant-at-Arms (3); Le Cercle Francais (4), Secretary (4); Road Show (2); Junior Honor Society (1,2,3); Library Monitor (4); Monitors' Council (4), Secretary (4); Motor Club (3); Miss Central III (4)

George Morton

NATIONAL HONOR SOCIETY

Regiment (1,2,3,4), Second Lieutenant (4); C.O.C. (4); O-Book Staff (4), Associate Editor (4); Mathematics Society (4); Library Monitor (4); Monitors' Council (4); Student Control (3); Football (1); Junior Honor Society (2,3); Motor Club (3); Register Representative (3)

Walter H. Jones, Jr.

Regiment (1,2,3,4), First Lieutenant and Aide (4); C.O.C. (4); Register Staff (4), Business Manager (4); O-Book Staff (3,4), Auditor (4); Press Club (3,4), Executive Board (4); State Press Convention (4); Engineers (3); Library Monitor (4); Speakers' Bureau (3); Latin Club (3); Intramural Sports (3,4); Motor Club (3); Road Show (4); Senior Play (4); Quill and Scroll (4)

Ernie James

Register Staff (4); O-Book Staff (4), Associate Editor (4); Press Club (4); Speakers' Bureau (4); Baseball (2,3,4); Basketball (2,3,4), Captain (4); Football (3); Track (4); Boys' O-Club (2,3,4); National Athletic Honor Society (3,4); Quill and Scroll (4)

Olive J. Odorisio

NATIONAL HONOR SOCIETY

Register Staff (4); O-Book Staff (4), Associate Editor (4); Central Colleens (3,4); Girls' Junior Glee Club (1); A Cappella Choir (2,3,4); Latin Club (2); Opera (3,4); Road Show (4); Junior Honor Society (1,2,3); Library Monitor (4); Spring Festival (1,2,3,4); Press Club (4); Junior Red Cross (4), Council Member (4); Quill and Scroll (4)

Inez Corkin

O-Book Staff (4), Art Editor (4); Greenwich Villagers (2,3,4); Central Colleens (1); Student Control (2,3); Art Contest (4); Senior Play (4)





Joel Lee Abrahamson

NATIONAL HONOR SOCIETY

Regiment (1,2); Register Staff (4); Project Committee (2,3,4); Central High Players (4); Latin Club (3); Press Club (3,4); Motor Club (3); Junior Honor Society (3); Latin Award (2); German Award (4)

Milton H. Anderson

Regiment (1,2); Boys' O-Club (3,4), Secretary (4); Road Show (3); Track (3,4); Football (3,4); National Athletic Honor Society (3,4); Senior Homeroom Secretary (4); Senior Play (4)



Rosalie Alberts

Central Colleens (1,2); Girls' Junior Glee Club (1,2,3); Central High Players (1,2,3); Opera (3,4); Road Show (1,2,3,4); A Cappella Choir (3,4); Senior Play (4)

Robert Anderson

Regiment (1,2); Road Show (3)

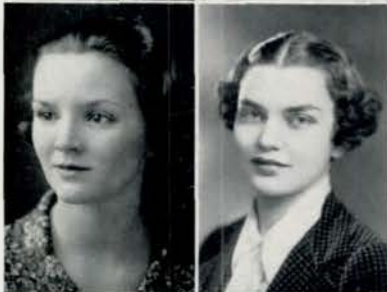


James L. Allis

Student Control (1,2,3,4); Boys' Senior Glee Club (1); Boys' Junior Glee Club (1); Central High Players (2,3); Opera (2,3,4); Road Show (3,4); A Cappella Choir (2,3,4); Orchestra (1)

Ruth E. Anderson

Student Control (2,3); Girls' Junior Glee Club (2); Motor Club (3)



Betty Ann Allyn

NATIONAL HONOR SOCIETY

Monitors' Council (4); Central Colleens (2,3,4), Secretary (4); Student Control (2,3); Girls' Junior Glee Club (1); Girls' Senior Glee Club (2); A Cappella Choir (3,4); Le Cercle Francais (4); Central High Players (2,3); Opera (3,4); Road Show (4); Junior Honor Society (1,2,3); Make-Up (3); Library Monitor (4); Spring Festival (2)

Elizabeth Billie Appleby

G.A.A. (2); Le Cercle Francais (2); Motor Club (3); Tennis (1,2,3,4)



Charles Anderson

Regiment (1,2); Engineers (4); Golf (3,4); Track (2,4); Football (4); Student Control (3,4); Boys' O-Club (3,4); Road Show (3,4)

Bernice Averett

Dora Bachman

Register Staff (4); Press Club (4); Central Colleens (1,2,3,4); Central High Players (2,3); Make-Up (4); Motor Club (3)

Harry Bane

Regiment (1,2,3,4), Second Lieutenant (4); Student Control (4); Boys' O-Club (3,4); C.O.C. (4); Wrestling (4); Track (3,4); Basketball (1,2); Football (1,2,3,4); National Athletic Honor Society (3)

Henrietta N. Backlund

Girls' Junior Glee Club (1); Central High Players (2,3,4); Home Economics Club (1,2); Make-Up (4); Home Room Representative (2); National Thespians (4); Motor Club (3); Senior Play (4)

Marjorie Louise Barnett

O-Book Staff (4); Student Control (3); Girls' Junior Glee Club (1); A Cappella Choir (2,3,4); Library Monitor (4); Spring Festival (1,2); Motor Club (3); Road Show (3); Opera (2,3,4); Central High Players (3,4)

Fred Baker

Regiment (1,2,3,4); French Play (3); Gentlemen's French Club (3); Library Monitor (4); Motor Club (3); Project Committee (1,2); Register Representative (2); Road Show (3,4); Student Control (4)

Bert B. Baum

Regiment (1,2); Junior Honor Society (2); Library Monitor (4); Motor Club (3); Road Show (3); Student Control (2,3); Central Committee (3,4); Mathematics Society (3,4); Los Sabios (2); Senior Play (4)

Adele Louise Baird

O-Book Staff (4); Central Committee (2,3,4); Lininger Travel Club (2,3); Student Control (3,4); Girls' Junior Glee Club (1); Road Show (2,3,4); French Play (2); Motor Club (3); Junior Honor Society (1)

Norma Baum

Spanish Paper (4); Los Sabios (3,4); Mathematics Society (3); Central Colleens (1); Student Control (2,3,4); G.A.A. (1); Road Show (4); Motor Club (3); Baseball (1); Basketball (1); Library Monitor (4)

Sarah Lee Baird

O-Book Staff (4); Central Committee (2,3,4); Lininger Travel Club (2,3); Student Control (3); Girls' Junior Glee Club (1); Girls' Senior Glee Club (2); Road Show (2,4); Motor Club (3); Junior Honor Society (2); Senior Homeroom Officer, Sergeant-at-Arms (4)

Winifred L. Baumer

O-Book Staff (4); Central Committee (3,4); Lininger Travel Club (3); Central Colleens (2,3); Le Cercle Francais (4); Latin Club (2,3); Road Show (3,4); Motor Club (3); Library Monitor (4); Senior Play (4)





Alice Ann Bedell

NATIONAL HONOR SOCIETY

Register Staff (4); O-Book Staff (4); Spanish Paper (4); Los Sabios (3, 4); Der Deutsche Verein (1,2); Central Colleens (1,2,3,4); Girls' Senior Glee Club (1); A Cappella Choir (2,3,4); Opera (2,3,4); Road Show (2, 3,4); National Music Supervisors' Convention (2,3); Library Monitor (4); Press Club (4); Junior Honor Society (2,3); Register Representative (4); Cinderella Ball (4); Spring Festival (1,2,3); Quill and Scroll (4); Girls' Junior Glee Club (1)

Joy Beranek

O-Book Staff (4); Los Sabios (2,3); Central Committee (3,4); Lininger Travel Club (3,4); Central Colleens (1,2); Girls' Junior Glee Club (1); Girls' Senior Glee Club (1); Opera (2,3,4); A Cappella Choir (2,3,4); Library Monitor (4); Road Show (4); Motor Club (3); Spring Festival (1,2,3)



Gerald K. Beem

Regiment (1,2,3,4), Second Lieutenant, Band (4); Student Control (4); Road Show (2,3); O-Book Staff (4)

Anna H. Berka

Student Control (3,4)



Phyllis Beerman

NATIONAL HONOR SOCIETY

Register Staff (4), Exchange Manager (4); Lininger Travel Club (3,4); Girls' Junior Glee Club (1,2,3); Latin Club (2); Quill and Scroll (4); Junior Honor Society (3); Motor Club (3); Library Monitor (4); Spring Festival (1); Press Club (3,4); State Press Convention (4)

Eleanor Ann Berner

Mathematics Society (4), Sergeant-at-Arms (4); Central Colleens (1,2,3, 4); Student Control (3,4); Girls' Junior Glee Club (1); Girls' Senior Glee Club (2); Le Cercle Francais (2,4), Vice-President (4); Road Show (3); Motor Club (3); Spring Frolic (3,4); Junior Honor Society (2); Library Monitor (4)



Bettie J. Bell

Register Staff (4); Press Club (3); Register Representative (4); Motor Club (3); Le Cercle Francais (4); Girls' Junior Glee Club (1); Student Control (4); Project Committee (3,4)

Dorothy Bernstein

Home Economics Club (4)



Dorothy Bender

Harold L. Biddix

Regiment (2); Boys' Junior Glee Club (1); Boys' Senior Glee Club (1); A Cappella Choir (2,3,4); Opera (3); Road Show (2); Senior Play (4)

Alyce Blaufuss

O-Book Staff (4); Central Committee (4); Lininger Travel Club (2,3); Central Colleens (1,2); Girls' Junior Glee Club (1); Girls' Senior Glee Club (2); Road Show (3,4); Motor Club (3); Senior Play (4)

Ann Louise Borg

Student Control (4); Girls' Junior Glee Club (1); Girls' Senior Glee Club (1); A Cappella Choir (2,3,4); Le Cercle Francais (3); Central High Players (4); Opera (3,4); Spring Festival (1,2,3,4); Junior Red Cross (4); Junior Honor Society (3); National Music Supervisors' Convention (2); Library Monitor (4); Girl Reserves (2,3,4)

Emily Martha Blazek

Central Colleens (4); Girls' Junior Glee Club (3); Motor Club (3); Library Monitor (4)

Virginia Ann Borton

Greenwich Villagers (2,3,4), Treasurer (4); Road Show (2,3,4); Swimming (1); Library Monitor (4); Spring Frolic (4); Junior Honor Society (3)

Gertrude B. Bloch

Central Colleens (2,4); Home Economics Club (2,3); Motor Club (3); Library Monitor (4)

Wilma A. Bowen

Girls' Junior Glee Club (2); Girls' Senior Glee Club (3); Motor Club (3); Library Monitor (4)

Mary Patricia Bock

Student Control (3,4); Central High Players (3); Library Monitor (4)

Marian E. Bremers

NATIONAL HONOR SOCIETY

Register Staff (4); O-Book Staff (4); Greenwich Villagers (1,2,4); Monitors' Council (4); Le Cercle Francais (3); French Play (2); Motor Club (3); Press Club (4); Library Monitor (4); Art Contest (1,2,3,4); Quill and Scroll (4)

Frances Bordy

O-Book Staff (4); Road Show (4); Central High Players (3,4); Central High Players' Play (4); Library Monitor (4); Student Control (3); Central Colleens (2,3,4); Discussion Club (3); Le Cercle Francais (2,3); Junior Honor Society (2,3); Senior Play (4)

Norman H. Bressman

Student Control (3,4); Speakers' Bureau (3,4); Central High Players (4); Latin Club (1,2,3); Central High Players' Play (4); Register Representative (4); Motor Club (3); Junior Red Cross Council (4); Junior Red Cross (4); Track (3,4); Debate (3); Senior Homeroom Treasurer (1); Junior Honor Society (1,3)

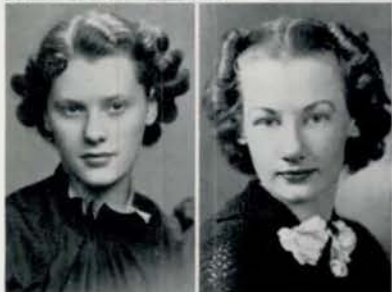




Eleanore Amelia Brigham

O-Book Staff (4); Greenwich Villagers (3,4), Secretary (4); Central Col-
leens (3,4); Girls' Junior Glee Club (1); Latin Club (2,3); Motor Club
(3); Art Contest (4); Girls' Rifle Team (2); Library Monitor (3)

Ruth Barbara Buschorn



Jeanne Browne

Central Colleens (4); G.A.A. (4); Central High Players (4); Make-Up
(4)

Ruth M. Byerly

Titians (1,2,3,4), Sergeant-at-Arms (4); Greenwich Villagers (2,3,4);
Student Control (2,3,4); Girls' Junior Glee Club (1); Art Contest (4);
Library Monitor (4); Motor Club (3); Senior Play (4); National Schol-
astic Awards (3); Pittsburgh Art Institute Scholarship (3)



Donald Bruhn

Regiment (1,2); Crack Platoon (1); Debate (4); Loquax (2); Project
Committee (1); Speakers' Bureau (1,2,3,4); Latin Club (2); Road Show
(2,3,4); Motor Club (3); Discussion Club (1,2,3,4), Sergeant-at-Arms
(2), President (3), Vice-President (4)

Betty Byrne

Central Committee (3,4); Lininger Travel Club (1,2,3); Student Control
(3,4); Road Show (2,3,4); Motor Club (3); Spring Frolic (3); Library
Monitor (4)



Dexter Buell

Regiment (1,2,3); Library Monitor (4); Swimming (1); Gentlemen's
French Club (2,3,4); French Play (3); Student Control (3,4); Motor
Club (3); Speakers' Bureau (3)

Jean Marie Callahan

Student Control (3,4); Swimming (4); Library Monitor (4); Register
Representative (3,4)



George R. Burns

Regiment (1,2,3,4), Second Lieutenant (4); C.O.C. (4); Crack Platoon
(1); Football (2); Motor Club (3); O-Book Staff (4); Speakers' Bureau
(4); Road Show (4); Register Representative (2); Intramural Sports
(2,3,4); Senior Play (4)

Dominic Campagna

Football (3,4); Wrestling (1,2,3,4), Captain (3,4), Manager (4); Road
Show (2); Boys' O-Club (1,2,3,4)

George A. Campbell

Regiment (1,2); Student Control (3); Motor Club (3)

Alfred Catania

Track (2); Football (2,3); Motor Club (3); Hi-Y (4)

McDowell Campbell

Football (1,2,3,4); Basketball (1,2,3,4); Road Show (3); Boys' O-Club (3,4); Track (3); Motor Club (3)

Edward E. Chait

Regiment (1,2,3,4), Second Lieutenant (4); Register Staff (4), Sports Editor (4), Make-Up Editor (4); Press Club (4), Vice-President (4); Motor Club (3); Football (1,3); Basketball (1,3); Quill and Scroll (4); C.O.C. (4)

Anthony S. Caniglia

Wrestling (2); Football (1,2,3)

C. Meade Chamberlin

Regiment (1,2,3,4), Second Lieutenant (4); O-Book Staff (4); Register Staff (4), Make-Up Editor (4); Mathematics Society (2,3); Project Committee (1); Student Control (1); Speakers' Bureau (4); Quill and Scroll (4); Senior Play (4); C.O.C. (4); Latin Club (2); Press Club (3,4); Road Show (1,2,3,4); Motor Club (3); Track (3); Basketball (3); Register Representative (1,2,3); State Press Convention (4); Intramural Sports (3,4)

Betty Carter

Register Staff (4); Central Colleens (4); Student Control (3); Latin Club (2,3); Press Club (4); Library Monitor (4); Senior Play (4)

Francis Herbert Chambers

Regiment (1,2,3,4), Second Lieutenant (4); C.O.C. (4); Boys' Junior Glee Club (1); Boys' Senior Glee Club (2); Debate (2); Latin Club (3,4); Motor Club (3); Senior Play (4)

Joan Catalano

Swimming (4); Tennis (3); Baseball (3); Hockey (3)

Ruth Changstrom

Student Control (4); Girls' Junior Glee Club (1); Girls' Senior Glee Club (1); Home Economics Club (1,2,3); Swimming (1); State Music Contest (4); Library Monitor (4); A Cappella Choir (2,3,4); Central High Players (4); Central High Players' Play (4)





Zella H. Cherniss

Central Colleens (1,2,4); Student Control (3,4); Junior Honor Society (3); Library Monitor (4); Motor Club (3)

Wallace R. Cleaveland

Regiment (1,2,3,4), First Lieutenant, Band (4); O-Book Staff (4); C.O.C. (4); Student Control (2); Boys' Junior Glee Club (1); Boys' Senior Glee Club (1); A Cappella Choir (2,3,4); State Music Contest (2,3); Road Show (1,2,3,4); Opera (1,2,3,4); Speakers' Bureau (4); Football (1); Orchestra (1,2,3,4), First Vice-President (4)



Amil Chilese

Regiment (1,2,3,4); Library Monitor (4)

Edward N. Cohn

Regiment (1,2); Register Staff (4); Press Club (3,4); Speakers' Bureau (2,3,4); Discussion Club (1,2,3,4), Treasurer (2); Crack Platoon (2); Ice Skating Club (4); Motor Club (3); Senior Play (4)



Edward Clark

Regiment (1,2,3,4), Captain and Ordnance (4); C.O.C. (4); Crack Platoon (2); Crack Squad (2,3); National Athletic Honor Society (3); Boys' O-Club (2,3,4); Road Show (1,2,3,4); Boys' Rifle Team (3,4); Track (2,3); Football (1,2,4); Orchestra (1)

Edward K. Connors

Regiment (1,2,3,4), Captain (4); C.O.C., Treasurer (4); Engineers (4); Mathematics Society (1,2,3,4), Vice-President (4); Monitors' Council (4)



Jack William Clark

Football (1,3); Golf (1,3,4); Basketball (1); Track (3,4); Boys' O-Club (4); Motor Club (3)

Ronald C. Cook

Regiment (1,2,3); Student Control (2,3); Library Monitors (4); Boys' Rifle Team (1); Motor Club (3)



Jessie E. Clark

Register Staff, Assistant News Editor (4); O-Book Staff (4); Central Committee (3,4); Lininger Travel Club (2,3,4), Vice-President (4); Student Control (2,4); Register Representative (2,4); Motor Club (3)

Liberty Cooper

O-Book Staff (4); Greenwich Villagers (2,3,4); Student Control (3); Girls' Junior Glee Club (1,2); Art Contest (2,3,4); A Cappella Choir (2)

Ruth Cooper

Mathematics Society (4); Student Control (3,4); Girls' Junior Glee Club (1); Swimming (1); Home Economics Club (3); Library Monitor (4)

William Dailey

Regiment (1,2); Stage Crew (3,4)

Nancy Lucille Corritore

Central Colleens (2); Student Control (3); Central High Players (3); Home Economics Club (2); Library Monitor (4); Motor Club (3); Senior Play (4)

Ben De Boice

Speakers' Bureau (4)

Lorraine Cramer

NATIONAL HONOR SOCIETY

Register Staff (3,4); Press Club (3,4); Student Control (2,3,4); Central High Players (1,2,3,4); Swimming (1); Junior Honor Society (1,3); Library Monitor (4); Motor Club (3); Quill and Scroll (4); Senior Play (4)

Charles Frederick DeBruler

Regiment (1); Boys' Junior Glee Club (1); Speakers' Bureau (3,4); Boys' O-Club (4); Swimming (1); Football (3,4); Track (4); A Cappella Choir (3,4); Senior Homeroom Officer, Sergeant-at-Arms (4)

Mary Ellen Crites

Central Colleens (2,3,4); Girls' Junior Glee Club (1); Le Cercle Francais (4); Latin Club (1,2); Library Monitors (4); A Cappella Choir (3,4); Opera (3,4); Student Control (4); Motor Club (3,4)

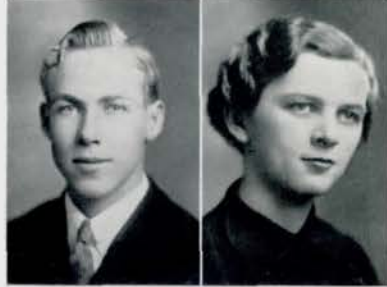
Frank R. Dehner

Arthur E. Dailey

Regiment (1,2); Stage Crew (2,3,4); Register Representative (1,4)

Ruth W. De Long

Girls' Junior Glee Club (1); Girls' Senior Glee Club (2,3); A Cappella Choir (4); Student Control (4); Central Colleens (1,4); Motor Club (3)





Lewis Di Lorenzo

Regiment (1,2,3,4), Second Lieutenant (4); C.O.C. (4); Mathematics Society (4); Boys' O-Club (2,3,4); Baseball (3,4); Wrestling (1,2,3,4); Library Monitor (4)

Dorthie J. Duda

Register Staff (4); Press Club (4); Project Committee (3,4); Lininger Travel Club (4); Le Cercle Francais (4); Road Show (2); Swimming (2); Library Monitor (4); Motor Club (3)



Lenore Ditzen

Student Control (2,4); Library Monitor (4); Central High Players (3); Central High Players' Play (3); Senior Play (4)

William Duffield

Regiment (1,2,3,4), Second Lieutenant (4); C.O.C. (4); Crack Squad (3); Stage Crew (1,2,3,4); Home Room Representative (3); French Play (1); Gentlemen's French Club (1,3,4); Motor Club (3)



Betty M. Dodds

Girls' Junior Glee Club (1); Girls' Senior Glee Club (1,2); A Cappella Choir (3,4); Central Colleens (2,4); Opera (4); Road Show (4); Latin Club (2); Le Cercle Francais (4); Student Control (4); Library Monitor (4); Junior Honor Society (1,2); Music Festival (1,2,3); Motor Club (3)

Reba G. Dulin

NATIONAL HONOR SOCIETY

Central Colleens (1,2); Central High Players (1,2,3); Student Control (1,2); Home Room Representative (1); Latin Club (1); Motor Club (3); Senior Play (4)



Edward Dolgoff

Boys' Junior Glee Club (1); Boys' Senior Glee Club (2); Student Control (2); Football (2); Speakers' Bureau (4); Motor Club (3)

Virginia Dwyer

Register Staff (4); O-Book Staff (4); Press Club (4); Central Committee (4); Student Control (4); Le Cercle Francais (2,3,4); Motor Club (3); Senior Play (4)



Marjorie M. Doyle

Titians (1,2,3,4); Latin Club (2)

Beatrice Eiseman

NATIONAL HONOR SOCIETY

Student Control (4); Register Representative (3); Girls' Junior Glee Club (2); Girls' Senior Glee Club (4); Junior Honor Society (1); Central High Players (1,2,3,4); Motor Club (3); Senior Play (4); Executive Secretary of Senior Class (4)

Bunny Elarth

Girls' Junior Glee Club (1); Girls' Senior Glee Club (1,2,3); Central High Players (1,2); Opera (2); Make-Up (2)

Elizabeth A. Farquhar

O-Book Staff (4); Greenwich Villagers (4); Central Colleens (1,3); Student Control (2); Central High Players (2); Latin Club (3); Swimming (1,2); Art Contest (4); Library Monitor (4)

Richard C. Ellis

Regiment (1,2,3,4), Second Lieutenant (4); C.O.C. (4); National Athletic Honor Society (3); Intramural Sports (3,4); Boys' O-Club (3,4); Baseball (1,2,3,4); Basketball (3); Football (2)

Maurice Feldman

NATIONAL HONOR SOCIETY

Register Staff (4); Mathematics Society (4); Press Club (3,4); Junior Honor Society (3); Library Monitor (4); Project Committee (2,3,4); Motor Club (3)

Betty J. Ensor

Los Sabios (4); Spanish Paper (4); Mathematics Society (3); Project Committee (1); Lininger Travel Club (4); Central Colleens (2,3,4); Library Monitor (4); Student Control (3,4); Latin Club (2); Girls' Junior Glee Club (1,2); Girls' Senior Glee Club (2); A Cappella Choir (3); Spring Festival (1,2,3,4); Junior Red Cross Council (3,4); Road Show (4); Opera (3); Senior Play (4)

Lena S. Fellman

Los Sabios (2,3,4); Central Colleens (1,2,3,4); Student Control (2,3,4); Make-Up (4); Library Monitor (4); Motor Club (3)

Frederick W. Epplen

Mathematics Society (4); Boys' O-Club (3,4); Student Control (3); Road Show (3,4); Stage Crew (4); Athletic Manager, Football (3); Track (1,2,3,4); Baseball (3); Home Room Representative (2,3); Motor Club (3)

Thomas H. Fike

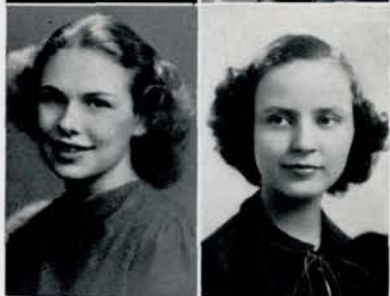
Regiment (1,2,3,4), Captain and Personnel Adjutant (4); C.O.C. (4); O-Book Staff (4); Loquax (2); Latin Club (2,3); Mathematics Society (3,4); Treasurer (4); Gentlemen's French Club (4); Vice-President (4); Central Committee (4); Road Show (4); Intramural Sports (1,2,3); Student Control (3); Senior Home Room Treasurer (4); Senior Play (4)

Betsy Ann Evers

Greenwich Villagers (4); Road Show (4)

Libby Fishberg

Register Staff (4); Press Club (3,4); Los Sabios (1,2); Lininger Travel Club (4); Central Colleens (1,2); Student Control (3,4); Girls' Junior Glee Club (1,2); Girls' Senior Glee Club (2); A Cappella Choir (2); Library Monitor (3,4); Opera (2)





Frances Ford

A Cappella Choir (4); Cinderella Ball (4)

Albert Friedman

NATIONAL HONOR SOCIETY
Los Sabios (2,3,4), Vice-President (3,4); Spanish Paper (4), Editor (4); Student Control (3); Junior Honor Society (2,3); Register Representative (4); Library Monitor (4); Executive Secretary of Senior Class (4); Motor Club (3)



William R. Fox

Register Staff (4), Make-Up Editor (4); Basketball (2,3,4); Boys' O-Club (4); Central High Players (3,4); Press Club (3,4); Motor Club (3); Quill and Scroll (4); Senior Play (4)

Paul Gallup

Regiment (1,2,3); Central Committee (2,3,4); Gentlemen's French Club (3,4); Speakers' Bureau (2,3,4); Road Show (2,3,4); Golf (1,4); Basketball (1); Football (1,3); Motor Club (3)



Mary R. Francis

Greenwich Villagers (3); Student Control (1); Make-Up (4); Motor Club (3)

Stuart H. Ganz

Regiment (1,2,3,4), Second Lieutenant (4); C.O.C. (4); Gentlemen's French Club (3); Speakers' Bureau (1,2,3); Road Show (4); Discussion Club (3,4), Treasurer (4); Junior Honor Society (1)



Carl Fredricks

Student Control (2,3,4); Speakers' Bureau (4); Boys' O-Club (3,4); Tennis (3,4); Cheer Leader (2,3); Motor Club (3)

Joseph P. Garrotto

Regiment (1); Boys' O-Club (3,4); Road Show (3); Wrestling (1,2,4); Track (3,4); Football (1,2,3,4); Motor Club (3)



Lillian B. Friedlander

Junior Honor Society (1,3); Los Sabios (3,4), Treasurer (4); Central Colleens (3,4); Student Control (3,4); Motor Club (3)

Maxine Gay

Ahuvah M. Gershater

Register Staff (4); Press Club (4); Register Representative (4); Junior Society (1,2,3); Library Monitor (4); Project Committee (1); Student Control (4); Central High Players (1,2,3,4); Student Association Ticket Prize (4); Shorthand 140 medal (4)

Ida S. Gorelick

O-Book Staff (4); Greenwich Villagers (2,3,4); Central Colleens (2,3); Student Control (3); Library Monitor (4)

Mary Narcisse Gill

Mathematics Society (2); Student Control (3); Girls' Senior Glee Club (3); Girls' Junior Glee Club (2); G.A.A. (1); Le Cercle Francais (4); Latin Club (3); Road Show (1); Roller Skating Club (4); Motor Club (3); Junior Red Cross (4); Spring Festival (2,3)

Reva Ann Gorelick

Los Sabios (4); Central Colleens (1,2,3); Student Control (4); Latin Club (3); Library Monitor (4)

Lee Glissman

Regiment (1,2,3,4), First Lieutenant and Adjutant (4); C.O.C. (4); Boys' O-Club (2,3); Intramural Sports (4); Boys' Rifle Team (4); Golf (2,3); National Athletic Honor Society (3)

Reva H. Gorelick

Central Colleens (1,2,3); Student Control (3); Central High Players (2,3,4); Central High Players' Play (2,3,4); Road Show (4); Make-Up (1); Swimming (1,2); Senior Play (4)

Arabella Goodrich

Register Staff (4); Central Committee (4); Student Control (3,4); Le Cercle Francais (3,4); Road Show (3,4); Press Club (4); Motor Club (3); Spring Frolic (4)

Arthur S. Gould

Register Staff (4); Loquax (3); Student Control (2,3,4); Latin Club (3); Sergeant-at-Arms (3); Press Club (4); Motor Club (3); Tennis (2,3,4); Library Monitor (4)

Alfred W. Gordon

Regiment (1,2,3,4), Captain (4); Engineers (4); Crack Squad (3); Gentlemen's French Club (3,4); Student Control (4); Speakers' Bureau (2,3,4); C.O.C. (4); Sergeant-at-Arms (4); Motor Club (3); President (3); Intramural Sports (4); Senior Play (4)

Richard Grabow

Regiment (1,2,3,4), Second Lieutenant (4); C.O.C. (4); Boys' Rifle Team (1,2,3,4), Captain (3,4); Library Monitor (4); Boys' O-Club (3,4); Intramural Sports (3,4); Library Monitor (4); Senior Play (4)





Steve Grandinetti

Regiment (1,2,3); Football (2,3,4); Baseball (2,3,4); Orchestra (1)



Caroline Mary Gustafson

Register Staff (4)



Peggy Lou Grest

NATIONAL HONOR SOCIETY

Register Staff (4); Le Cercle Francais (4); Press Club (4); Quill and Scroll (4); Senior Play (4)



Donnalee Gustafson

Library Monitor (4)



Rosemary E. Griffin

Central Colleens (4); Latin Club (2); Motor Club (3); Library Monitor (4); Senior Play (4)



Clark Haas, Jr.

Regiment (1,2,3,4), Second Lieutenant (4); C.O.C. (4); O-Book Staff (4); Boys' O-Club (4); Road Show (2,4); Motor Club (3); Track (4); Football (1,3,4)



Paul Condon Griffith

Register Staff (4); Boys' O-Club (4); Press Club (4); Motor Club (3); Wrestling (1); Track (1,4); Basketball (1); Football (1,3,4)



Rosemary Haines

Home Economics Club (1,3,4), Vice-President (1), Treasurer (4)



Paul W. Griffith

Regiment (1,2,3,4), Captain, Band (4); Engineers (4); Orchestra (1,2,3,4), Vice-President (4); C.O.C. (4); Library Monitor (4); Mathematics Society (3,4); Road Show (1,2,3,4); Senior Play (4)



Harriette D. Hamann

Student Control (3,4); Girls' Junior Glee Club (2); Spring Festival (2); G.A.A. (1,3,4); Baseball (2,3); Basketball (2,3); Hockey (3); Girls' Rifle Team (3,4); Make-Up (3); Home Economics Club (1)

Virginia L. Hansen

Central Colleens (4); Student Control (1,2,3); Girls' Junior Glee Club (1,2); Girls' Senior Glee Club (3); Opera (3,4); A Cappella Choir (3,4)

Richard L. Hempel

Motor Club (3); Boys' Senior Glee Club (2); A Cappella Choir (3,4)

Naomi J. Harnett

NATIONAL HONOR SOCIETY

Mathematics Society (4); Sergeant-at-Arms (4); Central Colleens (2,3,4); Girls' Junior Glee Club (1); Latin Club (2,3); Secretary (3); Latin Club Play (3); Junior Red Cross (4); Motor Club (3); Library Monitor (4); Latin Award (3); Junior Honor Society (1,2,3); Student Control (3,4); Senior Play (4)

Robert Hess

Roller Skating Club (4)

Caroline M. Harrison

Student Control (4)

Patricia Hicks

Central Colleens (4); Girls' Junior Glee Club (4); Le Cercle Francais (4); Latin Club (4); Senior Play (4)

Edward Hasenjager

Register Staff (4); Circulation Manager (4); Speakers' Bureau (4); Baseball (4); Library Monitor (4); Student Control (4); Press Club (3,4); State Press Convention (4); Student Association Ticket Prize Winner (4)

Fern Hollingshead

Titians (1,2,3,4); Vice-President (4); Student Control (2,3,4); Girls' Junior Glee Club (3); Girls' Senior Glee Club (4); French Play (1); Library Monitor (4); Senior Play (4)

John Arthur Hebert

Regiment (1,2); Los Sabios (2)

Doris Holmstrom

NATIONAL HONOR SOCIETY

Central Colleens (1,2,3,4); Vice-President (4); Girls' Junior Glee Club (1); Girls' Senior Glee Club (1); A Cappella Choir (2,3,4); Spring Festival (1,2); Le Cercle Francais (4); Opera (3,4); Road Show (4); Motor Club (3); Junior Honor Society (1,2,3); State Music Contest (3); Library Monitor (4)





Joe S. Hornstein

NATIONAL HONOR SOCIETY

Regiment (1,2); Engineers (3,4); Swimming (1); Wrestling (2,3,4); Manager (4); Track (3,4); Football (1,2,3,4); Junior Honor Society (1,3); National Athletic Honor Society (3); Student Control (4); Boys' O-Club (3,4)

H. Leonard Jacobson

NATIONAL HONOR SOCIETY

Regiment (1,2,3,4), Captain (4); Crack Squad (2,3); C.O.C. (4); Central High Players (4); Stamp Club (3); Road Show (2,3,4); Central High Players' Play (4); Hi-Y (4); Senior Play (4)



Henry A. Houser

Regiment (1,2,3,4), Captain (4); Engineers (4); Crack Squad (3); Hi-Y (3,4); Road Show (3,4); C.O.C. (4); Boys' Junior Glee Club (1); Student Control (3); Central Committee (2,3,4); Mathematics Society (2,3,4); Secretary (4); Senior Play (4)

Bruce Jepsen

Art Contest (3,4); Boys' Junior Glee Club (2); Boys' Senior Glee Club (2); A Cappella Choir (3); Opera (3)

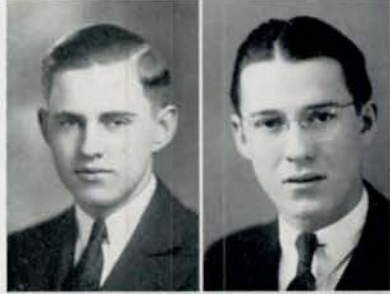


Beth Howley

Central High Players (1,2,3,4); Project Committee (1); Health Play (1); Road Show (1,2,3,4); Swimming Pageant (1); Spanish Play (1); Girls' Junior Glee Club (2); Central Colleens (2,3,4); Los Sabios (2); Spring Festival (2); Discussion Club (2,3); Sergeant-at-Arms (3); Central Committee (2,4); Motor Club (3); Spring Frolic (4); Central High Players' Play (4); Library Monitor (4); Monitors' Council (4); O-Book Staff (4); Secretary of Military Department (4); Senior Play (4)

Virginia W. Jetter

Central Colleens (2,3,4); Student Control (3,4); Latin Club (2); Library Monitor (4); Senior Play (4)



Robert Lincoln Humphreys

NATIONAL HONOR SOCIETY

Mathematics Society (4); Junior Honor Society (3); Library Monitor (4); Motor Club (3); Junior Red Cross (4); Senior Play (4)

Junior Johns

Track (1); Football (1); Motor Club (3); Opera (2); Boys' O-Club (2,3,4); Boys' Junior Glee Club (1); Boys' Senior Glee Club (1); A Cappella Choir (2,3,4)



Ira Joel Jackson

Regiment (1,2); Speakers' Bureau (1,3,4); Der Deutsche Verein (4); Mathematics Society (4); Latin Club (2); Road Show (4); Motor Club (3); Register Representative (4); Track (3); Basketball (1,2); Library Monitor (4); Athletic Manager, Freshman Football (2); Senior Play (4)

Albert Johnson

Track (2,3,4); Motor Club (3); Boys' Junior Glee Club (1); Boys' Senior Glee Club (2); A Cappella Choir (3); Spring Festival (3)

Arthur F. Johnson

Track (2,3); Student Control (4); Greenwich Villagers (3,4)

Rowena M. Jones

Student Control (3,4); Sports (3,4); Basketball (4)

Marian B. Johnson

Los Sabios (4); Road Show (4); Motor Club (3); Orchestra (3,4), Secretary (3); Junior Honor Society (3)

Eugene L. Jorgensen

NATIONAL HONOR SOCIETY

Regiment (1,2,3,4), Captain (4); C.O.C. (4); Crack Squad (3); Boys' Rifle Team (1,2,3,4), Manager (4); O-Book Staff (4); Boys' O-Club (4); Latin Club (2); Road Show (3); Track (1); Intramural Sports (3,4); Junior Honor Society (1,2,3)

Mary Lou Johnson

Register Staff (4); Press Club (4); Project Committee (2,3,4); Lininger Travel Club (2,3); Le Cercle Francais (4); Junior Honor Society (3); Library Monitor (4); Student Control (2); Motor Club (3); Quill and Scroll (4)

Marie Kaster

NATIONAL HONOR SOCIETY

Register Staff; Press Club (4); Girls' Junior Glee Club (1); A Cappella Choir (2,3,4); Spring Festival (1,2,3,4); Lininger Travel Club (4); Central Colleens (4); Opera (2,3,4); Road Show (2,3,4); Orchestra (1); Junior Honor Society (1,2,3); Latin Club (2); Motor Club (3); Quill and Scroll (4)

Vernelle Johnson

Girls' Junior Glee Club (1); Girls' Senior Glee Club (2); A Cappella Choir (3,4); Greenwich Villagers (4); Central Colleens (3,4); Student Control (3,4); Library Monitor (4); Junior Honor Society (1); Spring Festival (2,3,4); Motor Club (3)

Annette Keller

Press Club (3); Motor Club (3); Latin Club (4); Student Control (2,3,4); Central Colleens (2,3,4); Library Monitor (4); Senior Play (4)

Gordon A. Johnston

Regiment (1,2,3,4), Captain and Adjutant (4); C.O.C. (4); Crack Squad (2,3); Road Show (2,3,4); Hi-Y (4); Mathematics Society (3,4), Secretary (3); Motor Club (3)

Mary Louise Kelly

Central Colleens (1,2,3,4); Student Control (3,4); Girls' Junior Glee Club (2); Le Cercle Francais (4); Central High Players (2,3); Road Show (2,3); Motor Club (3); Junior Honor Society (1); Library Monitor (4); Physical Education Exposition (2); Spring Festival (2); Spring Frolic (4); Senior Play (4)





Florence A. Kennedy

Lining Travel Club (3,4); Sergeant-at-Arms (4); Road Show (4); Motor Club (3); Library Monitor (4)

Phyllis Kirkpatrick

Student Control (4); Le Cercle Francais (3)



William C. Kennedy

Regiment (1,2,3,4), Captain (4); Engineers (3); C.O.C. (4); Senior Homeroom Chairman (4); O-Book Staff (4); Project Committee (1); Loquax (3); Latin Club (2,3), Treasurer (3); Road Show (4); Junior Red Cross (4); Hi-Y (4)

Morris E. Kirshenbaum

NATIONAL HONOR SOCIETY

O-Book Staff (4); Mathematics Society (4); Student Control (3,4); Boys' O-Club (2,3,4); Wrestling (1,2,3); Junior Honor Society (1,2,3); Young Citizens' Contest (4); Discussion Club (2,3), Vice-President (3); National Forensic League (3,4), President (4); Motor Club (3); Register Representative (4); Debate Squad (3); Debate Team (3,4); National Athletic Honor Society (3)



Daniel Lee Roy Kenny

Rose Kirshenbaum

Central Colleens (1,2,3,4); Student Control (3,4); Central High Players (2,3,4); Library Monitor (4); Home Economics Club (4); Register Representative (4); Senior Play (4)



Helen Marie Kincaide

Central Colleens (2,3,4); Student Control (2,3,4); Girls' Junior Glee Club (1); A Cappella Choir (2,3,4); Junior Honor Society (3); Library Monitor (4); Le Cercle Francais (4); Central High Players (3); Opera (2,3,4); Road Show (3,4); Motor Club (3); Spring Frolic (3); Senior Committee (4); Senior Play (4)

Hedwig Klammer

NATIONAL HONOR SOCIETY

Loquax (3); Greenwich Villagers (2,3,4); Central Colleens (1,2,3,4); Student Control (3,4); Junior Red Cross (4); Motor Club (3); Art Contest (2,3); Library Monitor (4); Junior Honor Society (1,2,3)



Elbert King

Football (1,2)

Betty L. Knight

Central Colleens (4); Girls' Junior Glee Club (1); Girls' Senior Glee Club (2); A Cappella Choir (3,4); Opera (3,4); Road Show (4); Motor Club (3)

Ernest N. Koehler

Regiment (1,2)

Ima E. Kull

Los Sabios (4); Student Control (2,3,4); Girls' Junior Glee Club (1); Girls' Senior Glee Club (2); G.A.A. (1); Motor Club (3); Spring Festival (1,2); Swimming (1); Riflery (1)

Ray J. Koontz

NATIONAL HONOR SOCIETY

Baseball (3,4); Basketball (3,4); Football (3,4); Boys' O-Club (3,4); Vice-President (4); National Athletic Honor Society (3); Senior Home-room Officer, Sergeant-at-Arms (4)

Clark Kuppinger

Regiment (1,2,3); Register Representative (1,2); Student Control (2); Mathematics Society (3,4); Motor Club (3); Senior Play (4)

Antoinette J. Koory

Central Colleens (4); Student Control (3,4); Central High Players (2,3,4); Library Monitor (4); Junior Honor Society (1,3); Ice Skating Club (4); Senior Play (4)

Eva Kuznit

Library Monitor (4); Student Control (4); Home Economics Club (2); Register Representative (2)

Elsie Ann Kopecky

Student Control (3); Motor Club (3); Library Monitor (4); Swimming (1)

Kathryn La Greca

Home Economics Club (3,4); Motor Club (3); Sports (2); Library Monitor (4); Swimming (2,3,4)

Carolyn Kulesh

Register Staff (4); Central Colleens (2); Student Control (2,3,4); Le Cercle Français (2); Opera (2,3,4); Motor Club (3); Press Club (3,4); Orchestra (1,2,4); Library Monitor (4)

Judith Levenson

Der Deutsche Verein (4); Secretary-Treasurer (4); Central Colleens (2,3,4); G.A.A. (1,2,3); Sports (3); German Award (4); Junior Honor Society (1,2); Library Monitor (4)





Clare Adele Lindahl

Student Control (3,4)



June K. Mailand

NATIONAL HONOR SOCIETY

Register Staff (4); Staff Secretary (4); Mathematics Society (2,3); Central Colleens (1); Student Control (2,3); G.A.A. (1,2); Latin Club (4); Press Club (3,4); Baseball (1); Junior Honor Society (1,2,3); Library Monitor (4); Monitors' Council (4); Quill and Scroll (4)

Pearl Lipsey

Register Staff (3,4); Advertising Manager (4); Lininger Travel Club (4); Central Colleens (1,2,3,4); Sergeant-at-Arms (4); Student Control (2); Girls' Junior Glee Club (1,4); Press Club (3,4); Motor Club (3); Junior Honor Society (2,3); Library Monitor (4); Quill and Scroll (4)

Max Mallatt

Regiment (3,4); Cheer Leader (3); Costumes (3); Library Monitor (4); Motor Club (3); Spring Festival (3); Central High Players (4); Student Control (3); Boys' Senior Glee Club (3,4); Speakers' Bureau (3,4); Senior Play (4)



Dan Loring

Regiment (1,2,3,4); First Lieutenant (4); C.O.C. (4); Central Committee (2,4); Gentlemen's French Club (3,4); Motor Club (3); Senior Play (4)

Woodrow Mallett

Boys' Junior Glee Club (2); Speakers' Bureau (3); Motor Club (3); Orchestra (2,3,4); Library Monitor (4)



Ellen Jane Lovgren

Central Colleens (1); Student Control (3,4); Speakers' Bureau (3); Le Cercle Francais (4); Central High Players (2); Motor Club (3); Junior Honor Society (3); Library Monitor (4); Senior Play (4)

Elizabeth Maxwell

Greenwich Villagers (4); Central Colleens (4); Latin Club (3); Motor Club (3); Junior Honor Society (1,2); Library Monitor (4); Senior Play (4)



Juanita A. Macey

Student Control (4); Basketball (4); Sports (3,4)

John Francis McAvin

Regiment (1,2); Junior Honor Society (1,3); Declamatory (4); Der Deutsche Verein (4); Project Committee (3,4); Student Control (3,4); Discussion Club (4); Motor Club (3)

Robert P. McCampbell

Regiment (1,2); Central Committee (2,3); Motor Club (3)

Helen E. McFarland

Central Colleens (1); Central High Players (2); Central High Players' Play (4); Student Control (2); Road Show (1); Opera (4); A Cappella Choir (2,3,4)

Donald C. McCotter

NATIONAL HONOR SOCIETY

Regiment (1,2,3,4), Major (4); C.O.C. (4), President (4); Football (1,2,3,4), Captain (4); National Athletic Honor Society (3); Central Committee (4), President (4); Boys' O-Club (3,4); Road Show (4), Manager (4); Crack Squad (3); Senior Home Room Officer, Vice-Chairman (4)

Ruby M. McGee

Central Colleens (3,4); Student Control (2,3,4); Central High Players (4); Latin Club (2); Motor Club (3); Register Representative (3); Library Monitor (4); Junior Honor Society (3); Senior Play (4)

Helen McCrory

NATIONAL HONOR SOCIETY

O-Book Staff (4); Loquax (3); Lininger Travel Club (2,3); Student Control (2,3); Girls' Junior Glee Club (2); Opera (2,3); Road Show (2,3,4); Motor Club (3); Library Monitor (4); A Cappella Choir (3); Junior Honor Society (1,2,3)

Edward McNeill

Regiment (2,3); Basketball (2,3,4); Intramural Sports (4); Boys' O-Club (4); O-Book Staff (4); Register Staff (4); Press Club (4); Motor Club (3); Speakers' Bureau (3); Mathematics Society (2,3,4)

William Ward McDonald

Regiment (1,2,3); Library Monitor (4); Student Control (3); Road Show (1,2,3); Motor Club (3); Register Representative (4)

Virginia M. McNulty

Loquax (2); Central Colleens (3,4); Student Control (2,3,4); Latin Club (2,3), Sergeant-at-Arms (3); Motor Club (3); Home Economics Club (4); Junior Honor Society (2,3); Library Monitor (3); Senior Play (4)

William J. McDonough

Regiment (1,2,3,4), First Lieutenant, Band (4); C.O.C. (4); Orchestra (1,2,3,4), Vice-President (4); Road Show (1,2,3,4); Opera (2,3,4); Motor Club (3); Student Control (2,3); Mathematics Society (3,4)

Dolores R. McWilliams

Central Colleens (1,2,4); Student Control (3,4); Girls' Junior Glee Club (2); Le Cercle Francais (4); Motor Club (3); Swimming (1); Junior Honor Society (3); Library Monitor (4)





Lisbeth Menagh

Central Colleens (2,3,4); Student Control (2,3,4); Central High Players (2,3,4); President (4); Central High Players' Play (4); Motor Club (3); Summer Scholarship (3); Swimming (1); Junior Honor Society (2); Library Monitor (4); Senior Play (4)

Craig A. Miller

Regiment (1,2,3,4), Second Lieutenant, Staff (4); C.O.C. (4); Orchestra (3,4); Opera (4); Road Show (3,4); Senior Play (4)



Dorothy M. Merritt

Register Staff (3,4), Exchange Manager (4); Loquax (3); Central Colleens (3); Student Control (4); Girls' Junior Glee Club (4); G.A.A. (3,4); Latin Club (4); Sports (4); Orchestra (2,3); Library Monitor (4); Press Club (3,4); Motor Club (3); Home Economics Club (3); Volleyball (4); Girls' Rifle Team (4)

Louise Miller

Register Staff (4); O-Book Staff (4); Los Sabios (2,3,4), Secretary (4); Student Control (2,3,4); Girls' Junior Glee Club (1); Girls' Senior Glee Club (2); G.A.A. (1); Basketball (1); Press Club (3,4); Spring Festival (1,2); Motor Club (3); Library Monitor (4)



Robert L. Metz

Regiment (1,2); Athletic Manager, Football (4); Boys' O-Club (4); Central High Players' Play (4); Road Show (3,4); Hi-Y (4); Motor Club (3); Register Representative (4); Senior Homeroom Vice-Chairman (4); Senior Play (4)

Mary Gene Miller

Register Staff (4); Loquax (3); Central Committee (2,3,4); Quill and Scroll (4); Lininger Travel Club (2,3,4); Girls' Junior Glee Club (1); Le Cercle Francais (4); Road Show (2,3,4); Motor Club (3); State Press Convention (4); Spring Festival (1); Press Club (4)



William A. Milek

Regiment (1,2,3,4), Captain and Commissary (4); C.O.C. (4); Engineers (3,4), Captain (4); O-Book Staff (4); Mathematics Society (3,4); Vice-President (4), President (4); Motor Club (3); Road Show, Ticket Manager (3)

Doris Lee Mokofsky

Central Colleens (3,4); Central High Players (4); Road Show (4); Motor Club (3)



Josephine M. Militti

Student Control (4); Senior Play (4)

Barbara Monsky

Register Staff (4); Press Club (3,4); Central Colleens (1,3,4), Treasurer (4); Le Cercle Francais (3); Road Show (3); Library Monitor (4); Senior Homeroom Officer, Secretary (4); Senior Play (4)

Haskell Morris

NATIONAL HONOR SOCIETY
 Regiment (1,2); Junior Honor Society (1,2,3); Orchestra (1,2,3,4);
 Library Monitor (4); Loquax (3); Mathematics Society (2,3,4); Latin
 Club (2,3,4); Treasurer (4); Opera (3); Road Show (2,3,4)

Leonard Gordon Muskin

Los Sabios (3,4); Student Control (2); Motor Club (3); Baseball (4);
 Football (1,2,3,4); Boys' O-Club (2,3,4); Treasurer (4)

Charles N. Mortensen

Student Control (3); Boys' Junior Glee Club (1); Boys' Senior Glee Club
 (1); Motor Club (3); Register Representative (3,4); Library Monitor
 (4); Senior Play (4)

Patsy Myatt

Student Control (4); Le Cercle Francais (3); Library Monitor (4)

Karen M. Mortensen

O-Book Staff (4); Greenwich Villagers (2,3,4); President (4); Girls'
 Junior Glee Club (2); Girls' Senior Glee Club (2); A Cappella Choir (3,
 4); Opera (3,4); Library Monitor (4); Art Contest (4)

Grace Marie P. Myers

O-Book Staff (4); Central Committee (4); Lininger Travel Club (3);
 Central Colleens (4); Student Control (1,4); Girls' Junior Glee Club
 (1); Girls' Senior Glee Club (1); A Cappella Choir (2,3); Opera (1,2,3);
 Road Show (2,3); Motor Club (3); Swimming (3); Library Monitor
 (4); Senior Homeroom Officer, Sergeant-at-Arms (4)

Albert E. Murdock

Der Deutsche Verein (4); Sergeant-at-Arms (4); Mathematics Society
 (4); Student Control (3); Motor Club (3); Junior Red Cross (4); Li-
 brary Monitor (4); Road Show (4)

Richard Edward Nemeec

Regiment (1,2); O-Book Staff (4); Der Deutsche Verein (3,4); Latin
 Club (2); Motor Club (3); Register Representative (4); Discussion Club
 (3); Stamp Club (1,2,3); Library Monitor (4)

James T. Murray

Regiment (1,2,3,4); Wrestling (3,4); Football (1); Library Monitor (4);
 Student Control (2); Motor Club (3); Boys' Junior Glee Club (2); Boys'
 Senior Glee Club (3)

Inez Nielsen

Central Colleens (4); Student Control (4); Girls' Junior Glee Club (1,
 2); Le Cercle Francais (2,3); Motor Club (3); Library Monitor (4)





Charlotte Nogg

Central Colleens (1,2,3); Student Control (2,3,4); Motor Club (3)

Clifford P. Ostrand

Regiment (1,2,3); Baseball (2,3,4); Football (1,2); Athletic Manager, Basketball (4); Boys' O-Club (4); Intramural Sports (3); Motor Club (3)



Virgil Noriega

Regiment (1,2,3,4), First Lieutenant (4); C.O.C. (4); Register Staff (4); Circulation Manager (4); Press Club (4); O-Book Staff (4); Road Show (4); Motor Club (3); Library Monitor (4)

Frank E. Overholt

Regiment (1,2,3); Crack Platoon (2); Track (4); Motor Club (3)



Mike Novak

Regiment (1,2); Student Control (4); Boys' Junior Glee Club (2,3); Central High Players (4); Central High Players' Play, Business Manager (4)

Mary Jean Parkinson

Register Staff (4); O-Book Staff (4); Project Committee (1); Le Cercle Francais (3,4), President (4); Central High Players (1); Motor Club (1); Road Show (3); Register Representative (2); Press Club (3,4); Girls' Rifle Team (3); Sports (3); Library Monitor (4); Senior Home-room Officer, Sergeant-at-Arms (4); Quill and Scroll (4)



Peggy O'Neal

Central Colleens (4); Student Control (4); Le Cercle Francais (4); Motor Club (3); Library Monitor (4)

Mary Kay Parkinson

Register Staff (4); O-Book Staff (4); Central Colleens (3); Student Control (3,4); Press Club (3,4); Motor Club (3); Swimming (1,2); Lifeguard (2); Library Monitor (4); Quill and Scroll (4); Senior Play (4)



Elizabeth Ormsby

Project Committee (4); Central Colleens (3,4); Student Control (3); Motor Club (3); Library Monitor (4)

William S. Pattavina

Regiment (1,2); Wrestling (1,2,3); Football (1,2,3)

Virginia Louise Pedersen

Lining Travel Club (4); Central Colleens (2,3); Student Control (3); Girls' Junior Glee Club (1); Girls' Senior Glee Club (2); A Cappella Choir (2,3); Opera (1); Road Show (2); Library Monitor (4); Register Representative (3); Home Economics Club (3); Motor Club (3)

Angeline Pomodoro

Central Colleens (4); Student Control (2,3,4); Motor Club (3); Library Monitor (4)

Lillian Perelman

Road Show (4); Motor Club (3); Make-Up (3); Senior Play (4)

Elvamae Porter

Central Colleens (4); Student Control (2,3); Motor Club (3)

Patricia Phelan

Central Colleens (3,4); Latin Club (2); Motor Club (3); Library Monitor (4)

Jane L. Pratt

Register Staff (4); O-Book Staff (4); Lining Travel Club (4); Central Colleens (2); Student Control (3); Girls' Junior Glee Club (1); Girls' Senior Glee Club (2,3); A Cappella Choir (3); Le Cerle Francais (1,2,3); Press Club (3,4); Library Monitor (4); Junior Honor Society (1); Quill and Scroll (4); Senior Play (4)

Hiram Pittman

Regiment (3); Track (3,4); Latin Club (4); Boys' Junior Glee Club (2)

Beatrice Priil

Library Monitor (4)

Betty Ann Pitts

Register Staff (4); News Editor (4); Press Club (3,4); Girls' Junior Glee Club (1); Girls' Senior Glee Club (1); A Cappella Choir (2,3,4); State Music Contest (3,4); National Music Supervisors' Convention (3); Junior Honor Society (1,2,3); Opera (1,2,3,4); Road Show (1,2,3,4); French Play (2); Quill and Scroll (4)

Ann Patrice Prime

O-Book Staff (4); Titians (1,2,3,4); Secretary (4); Central Colleens (1,2,3,4); President (4); Student Control (3,4); Girls' Junior Glee Club (1); Girls' Senior Glee Club (2); A Cappella Choir (2,3,4); Central High Players (3,4); Latin Club (2); Motor Club (3); Spring Frolic (3,4); Opera (2,3,4); Senior Homeroom, Treasurer (4)





William Earnest Pulos

Regiment (1); Track (1,2,3,4); Football (1); Motor Club (3); Mathematics Society (4); Student Control (4); Speakers' Bureau (4)

Joan Ralston

Register Staff (4); Press Club (4); Central Colleens (3,4); Student Control (4); Girls' Junior Glee Club (1); Girls' Senior Glee Club (2); A Cappella Choir (3); Spring Festival (1,2,3); Junior Red Cross (4); Motor Club (3); Opera (3); Central High Players (4)



Rozanne Purdham

NATIONAL HONOR SOCIETY

Register Staff, Editor-in-Chief, Managing Editor (4); Project Committee (1,2,3,4); Lininger Travel Club (2,3,4), Secretary (3), President (4); Student Control (2,3); Press Club (3,4), Vice-President (4); Motor Club (3); Junior Honor Society (1,2,3); Library Monitor (4); State Press Convention (4); Spring Frolic (4); Senior Homeroom, Secretary (4); Senior Play (4); Quill and Scroll (4); D.A.R. Contest (4)

Gordon L. Randall

Regiment (1,2,3,4), Second Lieutenant (4); C.O.C. (4); Gentlemen's French Club (3); Road Show (3,4); Opera (3,4); Motor Club (3)



Mavis M. Radford

Student Control (3); Girls' Junior Glee Club (1); Motor Club (3); Senior Play (4)

Robert E. Rapp

Student Control (2,3,4); O-Book Staff (4)



Gertrude D. Rainey

NATIONAL HONOR SOCIETY

Girls' Junior Glee Club (1); Girls' Senior Glee Club (2); A Cappella Choir (3,4); Spring Festival (1,2,3,4); Central Colleens (1,2,3,4); Student Control (2,3,4); Le Cercle Francais (4); Opera (3,4); Library Monitor (4); Latin Club (2); Junior Honor Society (1,2,3); Junior Red Cross (4); Motor Club (3)

Sarah Resnick

Loquax (3); Central Colleens (1,2,3,4); Student Control (3,4); Girls' Junior Glee Club (1); Latin Club (2,3); Spring Festival (1); Junior Honor Society (1,3); Library Monitor (4)



Curtis Ralston

Regiment (1,2); Los Sabios (1,4), Sergeant-at-Arms (4); Student Control (4); Speakers' Bureau (4); O-Book Staff (4); Road Show (4); Hi-Y (3); Track (4); Football (1); Motor Club (3); Senior Play (4)

Eugene G. Richardson

Regiment (1,2,3,4), Second Lieutenant and Quartermaster (4); C.O.C. (4); Register Staff (4); O-Book Staff (4); Mathematics Society (3,4); Sergeant-at-Arms (4); Boys' Junior Glee Club (1); Speakers' Bureau (1,2); Press Club (4), Secretary (4); Hi-Y (4); Crack Platoon (1); Track (1,2); Library Monitor (4); Quill and Scroll (4); Senior Play (4)

Mabel Richardson

Frances M. Rosenblatt

Central Colleens (2,3,4); Student Control (4); Central High Players (4); Latin Club (2)

Edwin Riggs

Regiment (1,2); Track (2,3,4); Football (3); Student Control (3); Boys' Junior Glee Club (1,2)

Emma R. Rosicky

Home Economics Club (1,3,4); Central Colleens (4); Student Control (1,4); Library Monitor (4)

Ruby Rogers

Girls' Junior Glee Club (1); Girls' Senior Glee Club (2); A Cappella Choir (3,4)

Fred G. Rosicky

Mathematics Society (3,4)

Harold J. Rohde

Regiment (3,4); Orchestra (3,4); Golf (3); Basketball (3); Track (3)

Paulina J. Rothkop

Central Colleens (2,3,4); Student Control (3); Girls' Junior Glee Club (1,4); Motor Club (3); Basketball (1); Volleyball (1)

Betty Jane Rosen

NATIONAL HONOR SOCIETY

Register Staff (4); O-Book Staff (4); Press Club (3,4); Register Representative (4); Junior Honor Society (1,2,3); Central Colleens (2,3,4); Student Control (2,3,4); G.A.A. (1,2); Central High Players (3,4); Road Show (1,2,4); Health Pageant (1); Motor Club (3); Central High Players' Play (4); Basketball (1); Volleyball (1,2); Library Monitor (4); S. A. Ticket Prize Winner (4); Quill and Scroll (4); Senior Play (4)

Libby Ruback

Orchestra (4); State Music Contest (4)





Lewis Ruberti

Baseball (2); Basketball (2)



Ruth E. Saxton

Student Control (2); G.A.A. (1,2,3), Sergeant-at-Arms (2); Road Show (2); Baseball (1,2,3); Hockey (1,2,3)



Marjorie Rushton

Register Staff (4); O-Book Staff (4); Press Club (3,4); Press Convention (3,4); Register Representative (4); Central Committee (3,4); Project Committee (1,2); Lininger Travel Club (2,3); Road Show (2,3,4); Motor Club (3); Student Control (2)



Pearl Schneider

Los Sabios (2,3); Central Colleens (1,2,3,4); Student Control (2,4); Motor Club (3); Swimming (1,2); Junior Honor Society (2)



William R. Sachse

Regiment (1,2,3); O-Book Staff (4); Los Sabios (1,2,3); Mathematics Society (4); Student Control (4); Road Show (3,4); Junior Red Cross (4); Hi-Y (4); Motor Club (3); Senior Play (4)



Anne M. Schuetz

Register Staff (4); Press Club (4); Central Colleens (3,4); Home Economics Club (3,4), Secretary (4); Motor Club (3); Red Cross Club (4); Quill and Scroll (4); Senior Play (4)



Jack Safersteen

Regiment (1,2); Register Staff (4), Sports Editor (4); Speakers' Bureau (3); Press Club (3,4); Road Show (1,2,3,4); Orchestra (1,2,3,4); Discussion Club (2,3,4), Secretary (4), Sergeant-at-Arms (4); Motor Club (3); Senior Play (4)

John A. Scigliano

NATIONAL HONOR SOCIETY
National Athletic Honor Society (3); Wrestling (3,4); Mathematics Society (4); Register Representative (4); Boys' O-Club (4); Junior Honor Society (3); Library Monitor (4); Track (3); Latin Club (3)

Frances Saitta

Latin Club (3); Girl Reserves (4); Art Contest (2); Motor Club (3)

Harry E. Seagren

NATIONAL HONOR SOCIETY
Regiment (1,2,3,4), First Lieutenant (4); C.O.C. (4); Crack Squad (3); Crack Platoon (1,3); Football (2,3,4); Junior Honor Society (1,2,3); Latin Award (3); National Music Contest (4); Library Monitor (4); O-Book Staff (4); Mathematics Society (4); Boys' Junior Glee Club (2); Boys' Senior Glee Club (2); A Cappella Choir (3,4); Boys' O-Club (4); Discussion Club (1,2,3), Vice-President (3); Opera (3,4); Road Show (3,4); Spring Festival (2,3,4); Senior Committee (4); Register Representative (1); Motor Club (3)

Bryce T. Senter

Opera (4); Road Show (4); Orchestra (4); Library Monitor (4)

Bernice M. Silverman

Titians (1,2,3,4), Treasurer (4); Central Colleens (1,2,3,4); Student Control (1,2,3,4); Girls' Junior Glee Club (1); Girls' Senior Glee Club (2); Central High Players (3); Junior Red Cross (4); Home Economics Club (4)

Irene M. Seybold

Central Colleens (3); Student Control (3); Le Cercle Francais (2,3,4); Latin Club (2); Motor Club (3); Register Representative (3); Junior Honor Society (1,2); Library Monitor (4)

Josephine Smith

O-Book Staff (4); Central Colleens (3); Student Control (4); Girls' Junior Glee Club (1); Girls' Senior Glee Club (2,3); A Cappella Choir (3); Opera (3); Senior Play (4)

Earl W. Sherman

Regiment (1); Monitors' Council (4); Register Representative (2); Library Monitor (4)

Joseph R. Soshnik

NATIONAL HONOR SOCIETY

Regiment (1,2,3,4), Second Lieutenant, Band (4); C.O.C. (4); Engineers (3); O-Book Staff (4); Latin Club (2); Loquax (2); Forensic Society (3,4); Speakers' Bureau (4); Opera (2,4); Road Show (1,2,3,4); Library Monitors (4); Orchestra (1,2,3,4), President (4); Debate Squad (2,3,4); Debate Team (3,4); National Forensic League (2,3,4), Secretary (4); Senior Committee Chairman (4); District Music Contest (4); Intramural Sports (1,4); Junior Honor Society (1,2,3); All-School Mixed Band (4); Motor Club (3); Senior Play (4)

Harriet Sherman

Central Colleens (4); Student Control (4)

Mildred N. Soukup

Student Control (2); Latin Club (3); Swimming (1); Sports (1); Library Monitor (4); Motor Club (3)

Catherine Sibbersen

Lining Travel Club (3,4); Central Colleens (1); Central Committee (1)

John Edward Sprague

Boys' Junior Glee Club (2); Boys' Senior Glee Club (2); A Cappella Choir (3,4); Register Representative (3); Opera (3); Motor Club (3)





Maxine M. Sprague

Register Staff (4); Press Club (4); Lininger Travel Club (4); Central Colleens (4); Student Control (2,3,4); Library Monitor (4); Junior Red Cross (4); Motor Club (3); Senior Play (4)

Marion Stone

NATIONAL HONOR SOCIETY

Latin Club (2), Secretary (2); Loquax (3); Los Sabios (4); Monitors' Council (4); Library Monitor (4); Costumes (3); Opera (1); Student Control (2,3,4); Girls' Junior Glee Club (1); Girls' Senior Glee Club (1); A Cappella Choir (2,3); Junior Honor Society (1,2); Spring Festival (1,2,3)



Maurine Starrett

Register Staff (4); Press Club (4); Project Committee (4); Opera (3,4); Road Show (4); Student Control (3,4); Library Monitor (4); A Cappella Choir (3,4)

Marion Strauss

NATIONAL HONOR SOCIETY

Register Staff (3,4); O-Book Staff (4); Los Sabios (2,3,4), Vice-President (2), Treasurer, Secretary (3), President (4); Central Colleens (1,2,4); Student Control (2,3,4); Girls' Junior Glee Club (1); Girls' Senior Glee Club (2); Speakers' Bureau (3,4); Central High Players (2); Central High Players' Play (4); Quill and Scroll (3,4); Declamatory (3); Press Club (3); Register Representative (3); Motor Club (3); Forensic Society (3); National Forensic League (3); Senior Committee (4); Spring Festival (1,2); Library Monitor (4); Junior Honor Society (1,2,3); Senior Executive Secretary (4); Debate Squad (3); Debate Team (3); Senior Play (4)



Edward M. Stein

Regiment (1,2,3,4); Crack Platoon (2); Latin Club (3,4); Loquax (3); Motor Club (3)

Benna D. Sutera

Student Control (4); Sports (1)



Frank L. Steppat

Student Control (3); Track (2); Football (3); Register Representative (3); Senior Play (4)

Marie Sykes

Junior Honor Society (2); Student Control (3,4); Central High Players (4); Road Show (4); Senior Play (4)



Elizabeth Ann Stewart

Maynard T. Swartz

Regiment (1,2,3,4), Captain, Plans and Training Officer (4); Crack Squad (2,3), Captain (4); Engineers (3,4); Crack Platoon (3); C.O.C. (4), Secretary (4); Football (1); Swimming (1); Track (3,4); Road Show (3,4); Gentlemen's French Club (2,3,4); Golf (1); Boys' O-Club (1,2,3,4); Motor Club (3); Intramural Sports (3,4); Senior Homeroom Officer, Sergeant-at-Arms (4)

Gayle S. Tate

Regiment (1,2,3); Register Staff (4); Project Committee (1); Student Control (4); Speakers' Bureau (2); Central High Players (4); Latin Club (2,3); Road Show (4); Press Club (4); Motor Club (3)

Helen D. Thomas

Central Colleens (1); Girls' Junior Glee Club (1); Girls' Senior Glee Club (2); A Cappella Choir (3); Latin Club (3); Motor Club (3); Sports (1); Library Monitor (4); Make-Up (2,4)

Adeline J. Tatelman

NATIONAL HONOR SOCIETY

Register Staff (4); O-Book Staff (4); Central Colleens (1,2,3,4); Student Control (1,2,3,4); Girls' Senior Glee Club (3); Girls' Junior Glee Club (2); Central High Players (4); Opera (3,4); Discussion Club (1,2,3,4); Secretary (3); Sergeant-at-Arms (2); Motor Club (3); Register Representative (1,2,3,4); Cinderella Ball (4); Swimming (1); Junior Honor Society (3); Costumes (4); Library Monitors (4); A Cappella Choir (3,4); Spring Festival (2,3,4); Press Club (4); S. A. Ticket Prize Winner (4); Quill and Scroll (4)

Margaret Thomas

O-Book Staff (4); Central Committee (4); Lininger Travel Club (2,3); Student Control (3,4); Girls' Junior Glee Club (3); Girls' Senior Glee Club (3); Road Show (2,3,4); Motor Club (3); Spring Frolic (3); Library Monitor (4)

Douglas Taylor

Boys' O-Club (4); Motor Club (3); Golf (3,4); Basketball (3); Athletic Manager, Golf (4)

William W. Thompson

John F. Taylor

Regiment (1); Track (1,2,3,4); Basketball (3); Football (1,2,4); Boys' Junior Glee Club (1); Boys' O-Club (2,3,4)

Elaine C. Tindell

NATIONAL HONOR SOCIETY

Central Colleens (4); Girls' Junior Glee Club (1); Girls' Senior Glee Club (2); A Cappella Choir (3,4); Latin Club (2,3); Latin Play (2,3); Opera (3,4); Road Show (4); Junior Honor Society (1); Library Monitor (4); Spring Festival (1,2,3,4)

Phoebe Tholl

Titians (1,2,3,4); President (4); Student Control (2,3,4); Spring Frolic (2,3); Properties (3)

Albert Truscott

Engineers (3); Register Staff (4); Boys' Senior Glee Club (3); Boys' O-Club (2,3,4); President (4); Press Club (3,4); Wrestling (3,4); Captain (4); Track (2,3,4); Basketball (1,2); Football (1,2,3,4); National Athletic Honor Society (3); Senior Homeroom Chairman (4)





Maxine Turner

Girls' Junior Glee Club (1,2); Girls' Senior Glee Club (2,3); Junior Honor Society (3); Student Control (3,4)

Joe Vitale

Regiment (1,2); Boys' O-Club (2,3,4); Wrestling (1,2,3,4)



Mary Ellen C. Uhrich

Student Control (3,4); Girls' Senior Glee Club (2); Girls' Junior Glee Club (1); G.A.A. (3); Latin Club (2); Spring Festival (1,2)

Nancy Ann Vitale

Central Colleens (4); Student Control (3); Central High Players (2,3,4); Motor Club (3); Senior Play (4)



Charlotte Utt

Register Staff (4); Lininger Travel Club (4); Central Colleens (3); Student Control (3); Girls' Junior Glee Club (1); Girls' Senior Glee Club (2,3); A Cappella Choir (3); Register Representative (4); Home Economics Club (3); Press Club (3,4)

Helen Ruth Waechter

Student Control (3); Le Cercle Francais (3,4); Library Monitors (4)



Bernice Vanecek

Central Colleens (4); Student Control (3); Girls' Junior Glee Club (1); Spring Festival (1); G.A.A. (1); Road Show (2,3); Make-Up (2)

Peggy Wagenseller

Greenwich Villagers (2,3,4); Student Control (3,4); Girls' Junior Glee Club (1); Girls' Senior Glee Club (2); A Cappella Choir (2,3,4); Opera (3,4); Spring Festival (1,2,3,4)



Arnold Viener

Los Sabios (3); Project Committee (2,3,4); Junior Honor Society (3); Stamp Club (3)

John Wagstaffe

Register Staff (4); Press Club (4); Los Sabios (3); Stamp Club (3); Wrestling (2)

Raymond Wahlstrom

Speakers' Bureau (4); Register Representative (3); Motor Club (3)

Elma Wesley

Student Control (1); Girls' Junior Glee Club (1); Spring Festival (1)

Lenore Wainwright

Kathryn Wheat

Sports (4)

Ruth Walsh

Library Monitor (4); Motor Club (3); Central Colleens (1,4); Lininger Travel Club (4)

Robert W. Wherry

Regiment (1,2,3,4); First Lieutenant (4); C.O.C. (4); Crack Squad (3); O-Book Staff (4); Road Show (3,4); Athletic Manager (4); Motor Club (3); Register Representative (4)

David Weiner

Boys' Junior Glee Club (1,2); Spring Festival (2); Track (1,2,3); Basketball (1,2,3,4); Football (1,2,3); Boys' O-Club (2,3,4)

Darlene H. White

Central Colleens (4); Girls' Junior Glee Club (3); Girls' Senior Glee Club (4); Swimming (3); Hockey (3)

Mary Jimmie Welch

Student Control (2,3,4); G.A.A. (2,3,4); Secretary (4); Baseball (2,3,4); Basketball (2,3,4); Tennis (2,3,4); Volleyball (2,3,4); Hockey (2,3,4); Captain (4); Girls' Rifle Team (3)

Eleanor Jean White

Register Staff (4); Press Club (4); Central Colleens (1); Student Control (3,4); G.A.A. (2,3,4); Treasurer (4); Swimming (1,2); Basketball (2,3); Hockey (3); Library Monitor (4); Girls' Rifle Team (4); Senior Play (4)





Lee White

Central Colleens (2,3); Student Control (3); Le Cercle Francais (4); Home Economics Club (4)

Jeannette Wilkinson

NATIONAL HONOR SOCIETY

Central Colleens (3,4); Student Control (3,4); Le Cercle Francais (4); Latin Club (2,3); Latin Play (2,3); Latin Awards (3); Library Monitor (4); Junior Honor Society (1,2,3)



Alvah P. Whitmore

Regiment (1,2,3,4), First Lieutenant (4); C.O.C. (4); Crack Platoon (1); Register Staff (3,4), Circulation Manager (4); O-Book Staff (4); Press Club (3,4), President (4); Register Representative (2); Intramural Sports (4); Motor Club (3)

Guy Williams

NATIONAL HONOR SOCIETY

Regiment (1); Register Staff (4); O-Book Staff (4); Press Club (4); Junior Honor Society (1,2,3); Der Deutsche Verein (4); Student Control (2); Motor Club (3); Library Monitor (4); Quill and Scroll (4); Senior Play (4)



Tom E. Whitney

Student Control (1,3); Football (3); Library Monitor (4)

Mary Wolfson

Central Colleens (2,3,4); Student Control (3,4); Central High Players (2,3); Home Economics Club (4); Library Monitor (4); Swimming (3); Junior Honor Society (1,2,3)



Jim H. Whittle

Regiment (1,2,3,4), First Lieutenant (4); C.O.C. (4); Road Show (4); Library Monitor (4); Boys' Rifle Team (2,3,4); Intramural Sports (4); Senior Play (4)

Naomi Wolfson

Der Deutsche Verein (4); Central Colleens (1,2,3); Student Control (2,3); Central High Players (2,3,4); Swimming (2)



Elaine Wickham

Central Colleens (3,4); Junior Red Cross (4); Motor Club (3); Home Economics Club (3,4); Senior Play (4)

Betty Charlene Wood

Girls' Junior Glee Club (1); Girls' Senior Glee Club (2); A Cappella Choir (3,4); Home Economics Club (3,4); Motor Club (3)

Ted Wood

Regiment (1,2,3,4), First Lieutenant and Adjutant (4); C.O.C. (4); Mathematics Society (2,3,4); Central Committee (4); Opera (3,4); Road Show (3,4); Motor Club (3); Hi-Y (1,2,3); Golf (1); Senior Homeroom Chairman (4); Speakers' Bureau (1); Senior Play (4)

Paul N. Youngstrom

Student Control (2,3); Boys' Junior Glee Club (1); Boys' Senior Glee Club (2); A Cappella Choir (3,4); Motor Club (3)

Harriette V. Wrenn

O-Book Staff (4); Los Sabios (4); Central Colleens (1,2,3,4); Student Control (3); Girls' Junior Glee Club (3,4); Spring Festival (3,4); G.A. A. (2,3); Library Monitor (4)

Brunhilde Betty Zenke

Greenwich Villagers (2,3,4); Student Control (4)

Margaret R. Yeager

NATIONAL HONOR SOCIETY
Register Staff (4); Central Colleens (4); Student Control (4); Girls' Junior Glee Club (2); Girls' Senior Glee Club (2); A Cappella Choir (3); Le Cercle Francais (4); Junior Honor Society (2,3); Press Club (4); Register Representative (4); Spring Festival (2,3); Junior Red Cross (4); Library Monitor (4); Quill and Scroll (4); Senior Play (4)

Dewey K. Ziegler

NATIONAL HONOR SOCIETY
Regiment (1,2); O-Book Staff (4); Mathematics Society (2); Gentlemen's French Club (3,4), Secretary (4); Student Control (2); Speakers' Bureau (2); Declamatory Contest (3); Debate Team (3,4); Debate Squad (3); National Forensic League (4); Latin Awards (2); Junior Honor Society (1,2,3)



SENIORS WHOSE PICTURES DO NOT APPEAR . . . Corrinne Acamo, Helen Alevezos, Catherine Bates, Catherine Corcoran, Helen Jean Crowley, Mary Louise Dunshee, Joseph K. Edwards, Corinne Ernst, Elma Forrest, Renee L. Greenwald, Richard Hoberman, Gwen Jackson, Bernard Kirwan, George Ledyard, Darlene Loss, Josephine Louis, Ruth Magzamin, Grayce Claire Miceli, Nancy Milone, Gertrude Miroff, Carolynn Murray, Amos Pagh, Betty Patterson, Marie Petello, Dennis Proskovec, Robert Sconce, Phyllis Sinton, Rosalie Joy Smernoff, Dorothy Stipe, Bernard C. Trachtenberg.

Brigham, Buchanan, E. J. Smith





Cooper, Corkin, F. Johnson



Senior Officers and Sponsors

Dansky, Fox, DeBruler, Metz, Bressman, Kennedy, McManus, Fike
 Friedman, Koontz, Anderson, McCotter, Monsky, Baird, Prime, Strauss, M. J. Parkinson
 Barker, Moore, Schwartz, Grimes, Truscott, Bernstein, Yousem, Eiseman, Buchanan
 Mortensen, Kibler, Schmidt, Rice, Mueller, Carlson, Griffith

Senior Officers and Sponsors

Senior officers and sponsors of the June, 1937, graduating class were selected by the class at a special election held January 14. Edmund Barker was chosen president; Verne Moore, vice-president; Lee Grimes, secretary; and Charles McManus, treasurer. Natalie Buchanan and Robert Bernstein were chosen girls' and boys' sergeants-at-arms, respectively. Class parliamentarian was Abram Dansky, and Joy Yousem was the reporter. The election was held at the end of the first semester in order to facilitate organization and allow the seniors to make early plans for their class activities.

Miss Margaret Mueller, Miss Juliette Griffin, Miss Julia Carlson, Mr. Frank Rice, Mr. Elmer Mortensen, and Mr. J. G. Schmidt were selected as faculty sponsors. Miss August Kibler, executive sponsor, aided the cabinet with its general plans and acted as a contact between the class, office, and other groups.

Each of the three senior home rooms elected its own presiding officers. Chairman of Homeroom 215 was Al Truscott; vice-chairman, Don McCotter; secretary, Rozanne Purdham; treasurer, Ann Patrice Prime; sergeants-at-arms, Mary Jean Parkinson and Maynard Swartz. Officers in 325 were chairman, Bill Kennedy; vice-chairman, Bob Metz; secretary, Barbara Monsky; treasurer, Norman Bressman; girls' sergeant-at-arms, Sarah Lee Baird; and boys' sergeant-at-arms, Charles DeBruler. In the New Auditorium the officers were: chairman, Ted Wood; vice-chairman, Bill Fox; secretary, Milton Anderson; treasurer, Tom Fike; girls' sergeant-at-arms, Grace Marie Meyers; and boys' sergeant-at-arms, Ray Koontz.

The January graduates elected Dorothy Larson, president, and Christa Ensminger, treasurer. Mrs. Grace Knott was faculty sponsor.



National Honor Society

Barker, McCotter, Abramson, Dansky, Williams, Hornstein, Soshnik, Morris, Friedman, Scigliano
 Feldman, Jorgensen, Jacobson, Grimes, Ziegler, McCrory, Grest, Seagren, McManus, Humphreys, Koontz,
 Kirshenbaum
 Pratt, Stone, Buchanan, Holmstrom, Allyn, Purdham, Knox, Yeager, Tindell, Klammer, Harnett, Laytin,
 Odorisio
 Rainey, Bedell, Pitts, Strauss, Tatelman, Kaster, Cramer, Wilkinson, Eiseman, Dulin, Mailand, Beerman,
 Bremers, Rosen



Senior Committee Chairmen

Strauss, Cherniss, Harris, Stein, James, Harnett, O. Odorisio
 Fishberg, Pratt, Allyn, Seagren, Jones, Murdock
 Chamberlin, McCotter, Barker, Houser, Ziegler, Soshnik



O-Book Staff

Richardson, Soshnik, McNeil, Haas, Ralston, Morton, Milek, Jepsen, McManus, Kennedy, Connors, Moore, Devereux, Kirshenbaum, Jorgensen, Cleaveland, Seagren, Ziegler, Dausky, Williams, Chamberlin, Jones, James, Whitmore, McCotter, Fike, Harris, Abrahamson, Rushton, Clark, Johnson, Smith, Sykes, Thomas, Brigham, Blaufuss, Miller, Mortensen, Dodds, Myers, Gorelock, Pratt, Wrenn, Strauss, Beerman, Cramer, M. K. Parkinson, Howley, Buchanan, De Long, Wyrick, Corkin, Byerly, Borton, Laytin, Bremers, Yousem, Odorisio, M. J. Parkinson, Bordy, Baird, Knox, Pitts, Bedell, Goodrich, Miller, Rosen



O-Book Circulation

Rapp, Beem, Otis, Crandell, Turner, Bernstein, James, Burns, Wherry, Fike, Ellis, Clow, Jones, M. Holman, Brugman, C. Holman, McIntosh, Gallup, Rushton, Beranek, Emmert, Tatelman, Pratt, Howley, Blaufuss, Alberts, Wagenseller, Schmidt, McCrory, Thomas, Bremers, Dwyer, Thomas, Williams, Bliss, Smith, Pratt, Cramer, Devereux, Hasenjager, Noriega, Whitmore



Senior Play

Seppat, Humphreys, Kuppinger, Mallat, Burns, Jones, Williams, Chambers, McNeill, Richardson, Anderson, Ralston
 Chamberlin, Metz, Cohn, Ganz, Fox, Griffith, Loring, Whittle, Graybow, Grest, Fike, Devereux, Ditzen
 Baumer, Blaufuss, Howley, Soshnik, King, Grimes, Hicks, Ensor, Gay, Dulin, McNulty, McGee, Koory,
 Safersteen, Biddix
 Kirshenbaum, Carter, Smith, Pratt, White, Scheutz, Eiseman, Sprague, Parkinson, Wickham, Keller, Harnett,
 Jetter, Rosen, Vitale, Perelman, Ralston
 Corritore, Corkin, Backlin, Bordy, Menagh, Houser, Jacobsen, Moore, Dwyer, Strauss, Sykes, Yeager,
 Purdham, Hopewood, Maxwell

Senior Play

One of the main events of the senior class was the play "Once in a Lifetime," a former Broadway hit, presented May 8 under the direction of Miss Myrna V. Jones.

Any member of the graduating class was eligible to try out for a part in the cast. "Once in a Lifetime" portrays the mad rush to Hollywood of three Broadway actors during the production of the first talking pictures. The play is a hilarious satire on methods of production and on the life of the motion picture people.

Verne Moore played the part of George Lewis, the "dead pan" comedian of the stage trio. Lisbeth Menagh portrayed May Daniels, the organizer of a Hollywood voice school. The part of Jerry Hyland, promoter of the idea to go to Hollywood, was taken by Henry Houser, and Virginia Dwyer was the suddenly starred ingenue.

Over a hundred members of the senior class took part in the production of the play, either as members of the cast or of the executive department. Miss Jones was assisted in the direction of the play by Jerene Grobee and Mary Frances Kaiser. The make-up mistresses were under the direction of Miss Frances McChesney, and the ushers under Mrs. Irene H. Jensen.

At an all-school mass meeting teasers from the play were presented to the student body. The point was stressed that the surplus funds from the play would be used to pay the O-Book deficit.

To stimulate underclassman interest in the play, a poster contest was held in which the characters of the play were represented on the posters. The students were asked to guess the identity of the person portrayed.



Monitors' Council

Connors, Sherman, Morton, McManus, Devereux
Allyn, Bremers, Howley, Pratt, Stone

Central High Library

The library which contains more than 20,000 books and periodicals is an important part of the high school. There are "permanent seats" for subjects such as history, civics, and economics that require regular daily use of material outside of text books. It has a room devoted to fiction, and the latest books are obtained through the pay collection.

The system of using the library is based upon student government. There are 133 monitors who have charge of separate tables and who are each responsible for keeping order at his table. Order is enforced by a system of "errors" for misdemeanors. The monitors elect a council each semester composed of one monitor from each hour. The council for this term consists of Charles McManus, Virginia Lee Pratt, Marian Stone, George Morton, Beth Howley, Harry Devereux, and Ed Connors. The council at its meetings discusses the problems of library government and acts as a court for students who have received three "errors."

The Student Control is active in helping the library. They assist in the work of cataloging books, mending books, registering students, sending duns, and various other jobs. Assisting the Student Control are several post graduates and NYA members. All work except that of the NYA is voluntary and no pay other than activity points is given.

This year an innovation has been tried in the library. Students are now learning how to check out their own books. This practice saves much of the librarians' time and may become a permanent institution.

Altogether students receive a working knowledge of how to use a library which must prove of valuable assistance later on. The library is directed by an able staff composed of Miss Zora Shields, head librarian, and Mrs. Hazel Stewart and Mrs. Catherine Blanchard, assistant librarians.



Library Monitors

Mortensen, Wahlstrom, McDonald, Alperson, Nemeec, Jones, Grimes, Connors, Grabow, Noriega, Margolin
 Buchanan, Bremers, Farquhar, Soukup, Wrenn, Kopecky, LaGreca, Griffith, Baum, Myers, Macalister,
 Friedman, Whittle
 Fishberg, Bordy, R. Cooper, Monsky, White, Bradford, Merritt, Baumer, Mailand, Beerman, Lovgren,
 Devereux
 Bowen, Cherniss, Purdham, Sprague, Lipsey, Kincaide, Griffin, Keller, Byerly, V. Borton, D. Borton, Jetter,
 R. Kirshenbaum, M. Kirshenbaum
 Ensor, Pratt, Cramer, Kulesh, McWilliams, McCrory, Ormsby, Duda, Janicek, Bell, Rosen, Johnson, Kuznit



Library Monitors

Inserra, Humphreys, Jones, Sherman, Morton, Milek, McManus, Otis, Noriega, DiLorenzo
 Chin, Scigliano, Senter, Seagren, Soshnik, Gustafson, Kennedy, Birk, Parkinson, McGee, Harnett
 Gorelick, Catania, Blazek, Seybold, Neilson, Borg, Allyn, Stone, Carter, Ditzen, Mortensen, Maxwell, Bloch,
 Klammer
 Wolfson, Rosicky, Tindell, O'Neill, Crites, Holmstrom, Berner, Wilkinson, Baum, Tatelman, Strauss,
 Johnson, Hollingshead, Callahan
 Tyler, Rainey, Odorisio, Dodds, Myers, Beranek, Thomas, Knox, Starrett, Bock, Changstrom, Walsh,
 Levinson, Laytin



Brigham, Corkin, Mortensen, Sykes

Borton, Bremers, Cooper, Zenke





Junior Honor Society . . . Epsilon Chapter

Silverman, I. Malashock, E. Malashock, Berman, Eisenstatt, Freymann, Singer, W. Harrison, Choen, Burstein, Tirro, Spier, McDonald
 Garotto, Peery, Weinstein, Hickey, Wolf, Arthur, Steinert, Mactier, Jensen, Woodhouse, Jacobs, Eggers, Kulesh, Klaitman, Schmidt
 Lewis, Richards, Johnson, Bella, Wilkerson, Carlberg, Tatelman, Hinricks, Hendricks, Morton, Dolly, Reed, A. Klein, Kalmansohn, Feldman
 Blumkin, Wertheimer, Raduziner, Lindee, Randall, Carleton, McIntyre, Marvin, Christensen, Dickinson, Harden, P. Klein, Robinson, Salerno, Knott, Gatezmeyer
 Byrne, Haggarty, Slater, Swarr, Burke, Noble, Burns, Decker, Palmquist, Sommer, Pegler, Griffith, McCampbell, Marchant, Finer, Civin, Harrison



Junior Honor Society . . . Delta Chapter

Crouse, Waxenberg, Frohardt, P. Bernstein, Knudsen, Yohe, Fredericksen, Hertzberg, Elia, Serrentino, Nocita, Else, Wolfson, Trachtenberg, Krimlofski, Rees, Baldrige, Kulakofsky, Waldron, Buchanan, Ruback, Nesselson, Goldstein, Morgenstern, Christie, Kursawe, Trotter, Rice, Huie, Bishop, Lindevall, Rivett, Hanford, Schapiro, Bachelder, Antos, Friedel, Katzman, Osherooff, Maxwell, Zimmerman, Forrest, Keller, Galbraith, F. Hanson, R. Goldstein
 Wolfson, Landstrom, Rosen, Rosenstock, Wiese, Lake, Gates, Willrodt, Piper, M. Hanson, James, Brown, Saylan



Junior Honor Society . . . Gamma Chapter

Slosburg, Pratt, Richardson, Otis, Turner, J. Cockle, G. Cockle, Dyball, Catin, Rosenblum, Margolin, Wintroub, Haugh, Osborn, Olson, Rosenbaum, Meyers, Peterson, Chamberlin, McDonald, Bunce, Anderson, M. J. Kopperud, Clark, Gaden, Foulks, Thorup, Smith, O'Hara, Erickson, Lipsey, Buchanan, Hartman, McGinnis, Nixon, Beerman, Meyers, Gilinsky, Noble, Westering, F. Morris, Carson, Wales, Gershter, Vogel, Steinert, Williams, Bliss, G. Odorisio, Paepet, Reynolds, Traub, Weiner, Meiches, Block, Carter

The Junior Honor Society

Junior Honor Society, founded in 1923 by Principal J. G. Masters, is the highest goal for which underclassmen may strive. Its objective is to recognize high achievement and individuality in both studies and school activities, thereby developing character and encouraging leadership.

Character and scholarship are the requirements for election to the Junior Honor society. Sophomores and Juniors must show qualities of leadership and service to the school as well as scholarship. The only requisite for membership during the Freshman year is scholarship and exemplary character. All those elected must have two A's and no grade below B, although one C is allowed if the individual is carrying five or more subjects. The organization consists of three chapters: Epsilon for the Freshmen, Delta for the Sophomores, and Gamma for the Juniors. This year two hundred and seventeen underclassmen were elected to membership for a council of fifteen of the faculty members. Active membership ceases at the end of one year. Graduates who have belonged to the Junior Honor Society are considered honorary members.

Announcement of the election was made in the Central High auditorium on April 16. Mr. J. G. Schmidt announced the Gamma chapter; Mrs. Irene H. Jensen, the Delta chapter; and Mr. F. Y. Knapple the Epsilon chapter. Miss Caroline E. Stringer delivered the charge.



Register Staff . . . First Semester

Chait, Porter, Chamberlin, Dansky, Turner, Hasenjager, Truscott, Abrahamson, Jones, Fox, James, Whitmore, Bedell, Bachman, Kulesh, Mailand, Knox, Cramer, Pratt, Buchanan, Beerman, Merritt, Utt, Gould, Saferstein, Parkinson, Yousem, Pitts, Purdham, Monsky, Harris, Lipsey Laytin, Fishberg, Rushton, Clark, Rosen, Gershter

Publications

Long recognized for its excellent journalistic merit, the Central High Register, a weekly publication, has been a part of Central High school since 1886. Under the direction of Mrs. Anne Lane Savidge, the paper is published by students who have had one or more semesters of journalism. All-American Honor rating, one of the highest awards conferred by the National Scholastic Press association, was received again this year for the period of 1936-1937; this rating was also won for the years 1927-1932, 1936.

Quill and Scroll, international honorary society for high school journalists, was founded in 1926; Central High's chapter was a charter member. The election of 35 students to Quill and Scroll was announced at a Press club banquet, bringing Central's chapter membership to a total of 399.

The Central High Press club, founded last year by Charles Harris and Jim Milliken, meets semi-weekly to bring members of the journalism department together to offer suggestions for and criticisms of the makeup and content of the paper. As activities, the club sponsored a dance, Pigskin Swing, and a banquet. For the first semester the officers elected are as follows: Charles Harris, president; Meade Chamberlin, vice-president; Joy Yousem, secretary-treasurer. For the second semester Alvah Whitmore was elected president; Edward Chait, vice-president; Eugene Richardson, secretary; Howard Turner, treasurer.

The O-Book, annual publication of the senior class, was published by a staff composed of members of the Register department, and by editors appointed from the senior class.



Register Staff . . . Second Semester

Harris, Slosburg, Turkel, Griffith, Turner, Hasenjager, Tate, Scott, Combs, Noriega, Whitmore, Cohn, Wintroub, Wagstaffe
 McNeill, Chait, Chamberlin, Dansky, Truscott, Williams, Crandell, Abrahamson, Jones, Fox, James, Margolin, Gould, Saferstein
 Bremers, Kaster, Kilston, Odorisio, Schuetz, Carter, Beerman, Merritt, White, Wyrick, Dwyer, Gustafson, Bell, Goodrich
 Bedell, Duda, Starrett, Kulesh, Mailand, Knox, Cramer, Grest, Bradford, Pratt, M. K. Parkinson, Sprague, Buchanan, M. G. Miller
 L. Miller, Yousem, M. J. Parkinson, Lipsey, Tatelman, Laytin, Fishberg, Purdham, Pitts, Yeager, Rushton, Clark, Rosen, Johnson

Register Staff

First Semester

Second Semester

Charles Harris	Editor	Rozanne Purdham
Ed Chait	Associate Editors	Meade Chamberlin
Meade Chamberlin		Betty Knox
Bill Fox		Bill Fox
Betty Knox		Howard Turner
Betty Ann Pitts	News Editor	Betty Ann Pitts
Francis Donahue	Sports Editor	Edward E. Chait
Eleanor Jean White	Girls' Sports	Susette Bradford Carolyn Gustafson
Walter H. Jones, Jr.	Business Managers	Walter H. Jones, Jr. Gayle Tate
Pearl Lipsey	Advertising Manager	Pearl Lipsey
Alvah P. Whitmore	Circulation Managers	Alvah P. Whitmore
Ed Hasenjager		Ed Hasenjager
Lorraine Cramer	Copy Readers	Lorraine Cramer
Jane Pratt		Marie Kaster
Phyllis Beerman	Exchange Managers	Phyllis Beerman
Dorothy Merritt		Dorothy Merritt
June Mailand	Staff Secretary	June Mailand
Betty Ann Pitts	Correspondents	Joy Yousem
Joy Yousem		Betty Ann Pitts



Quill and Scroll

Wintroub, Chamberlin, Turner, Williams, Dansky, Fox, James, Jones, Chait
 Buchanan, Yeager, Grest, Cramer, Pratt, Bremers, Harris, Richardson, Miller
 Johnson, Rosen, Purdham, Lipsy, Knox, Scheutz, Beerman, Laytin, Devereux, Slosburg
 Bedell, Strauss, Tatelman, Kaster, M. K. Parkinson, M. J. Karkinson, Pitts, Mailand, Odorisio, Yousem



Press Club

Slosburg, Turkel, Griffith, Turner, Hasenjager, Tate, Osborne, Cohn, Scott, McDonald, Whitmore, Noriega,
 Combs, Wintroub, Wagstaffe, Low
 McNeill, Chait, Chamberlin, Dansky, Truscott, Williams, Crandell, Abrahamson, Jones, Fox, James, Margolin,
 Gould, Saferstein, Cohen, Richardson, Harris, Devereux
 Bremers, Kaster, Ralston, Odorisio, Schuetz, Carter, P. Beerman, Merritt, White, Goodrich, Dwyer, Monsky,
 Stein, Gilinsky, Myers, Wolf, De Wald, Anderson
 Bedell, Duda, Starrett, Kulesh, Mailand, Fishberg, Laytin, Bradford, Pratt, M. K. Parkinson, Sprague,
 Buchanan, Bell, Rubinitz, Osoff, B. J. Clark, Myers, B. Beerman, Slabaugh, Gershater
 Bachman, Yousem, M. J. Parkinson, Tatelman, Lipsy, Cramer, Dustin, Westering, Solomon, Yeager, Knox,
 Pitts, Purdham, L. Miller, Rosen, Rushton, J. Clark, M. G. Miller, Johnson



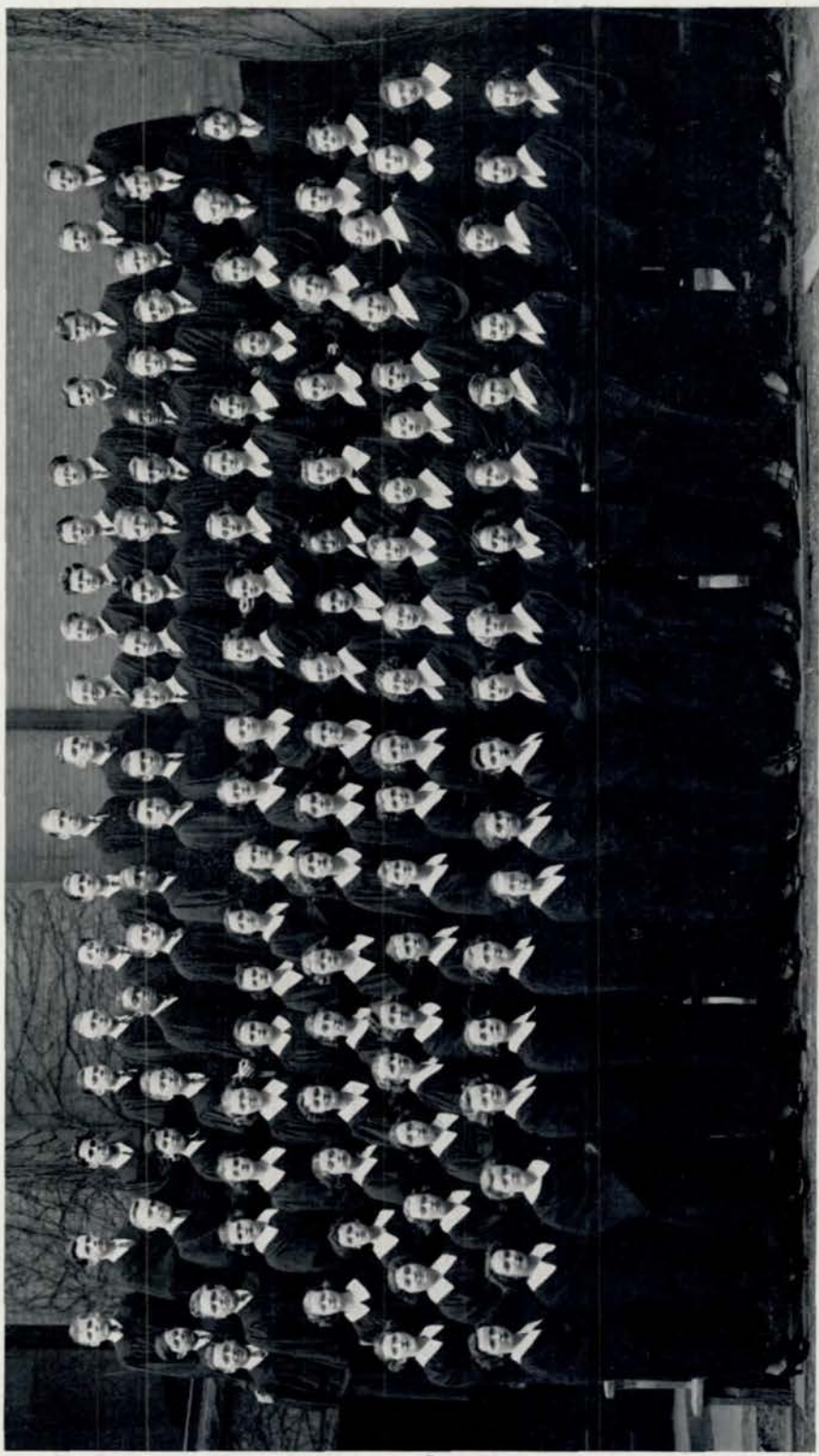
Debate Team

Soshnik, Crandell, Ziegler, Crampton, Kirshenbaum



Debate Squad

Richards, Lewis, Nesselson, Margolin, Wolfson, Goodbinder, Kirshenbaum
 Burstein, Epstein, Arceri, Crounse, King, Morgenstern, McAvin
 Soshnik, Singer, Crandell, Ziegler, Crampton, Rosenbaum



A Cappella Choir

Dimke, Smith, Maggard, Taylor, Andrews, Sahn, Robertson, Lower, Nantus, Hyipse, Youngstrom, McConnell, Johns, Wallace, Lippert, Catlin, Swoboda, Sims Gershater, H. Whitney, Twiss, Cleaveland, Murray, Drinsky, Lewis, Alldredge, Moran, Forchard, Iliff, Rypps, Sagren, Allis, Goodlet, Brennan, Pangle, Wilson, Chuda Heimrod, Walstrom, Hansen, Harris, Hanford, Bohman, Holman, Grabow, Nelson, Daddis, Rivett, Botch, Bennett, Speck, Whorl, K. Clarke, Johnson, Koory Greenspan, Saylan, Alberts, Johnson, M. Wagenseller, Fee, Paepfer, Rogers, Meyers, Lorenzen, James, Woods, Ovington, Baysdorfer, Yates, Crites, Smernoff Prime, Roccaforte, Whitney, Hornstein, Knight, Changstrom, Liggett, Knox, Parks, Allyn, G. Olorisio, A. Nelson, DeLong, Thorup, White, Robinson, Riba, Starrett, Beranek, B. Nelson, Kincaide, Tunison, Holmstrom, Bedell, Pitts, Kaster, Barnett, Borg, Tatelman, Fry, P. Wagenseller, Katz, Clarke, Steinert, Ramey

Music Department

The aims and desires of the directors of the music department of Central High school are: to be a means through which the students may become more appreciative of good music, and to give the pupils more opportunities to appear publicly. These objectives are obtained only through the patience and help of the directors: Mrs. Carol Marhoff Pitts, head of the department and director of the choir and senior glee clubs; Mrs. Elsie Howe Swanson, assistant director of the choir and head of the junior glee clubs; Mrs. Irene Haskins Jensen, voice teacher; and Miss Lylyan Chudacoff, accompanist.

The largest group in the department is the a cappella choir. The members have all been through the junior and senior glee clubs before being promoted to the choir. Enrollment in the junior glee club is entirely elective, but the individual must be judged by the instructors to have enough musical ability to be promoted to senior glee and on into the choir.

Each year an opera is presented by the department. December 15-17, "Blossom Time" was given. Only the members of the choir were eligible for the tryouts and the leads were: Doris Holmstrom, Jim Allis, Catherine Tunison, Joe Edwards, Wallace Cleaveland, Gloria Odorisio, Betty Ann Pitts, Harry Seagren, and Bob Wallace.

At the district music contest held at South High school, the vocal department had several winners: Catherine Tunison, high voice; Gloria Odorisio, low voice; Byron Lower, men's low voice; Bob Wallace, men's low voice, all these were superior ratings. Betty Ann Pitts, medium voice, rated excellent. In the instrumental division the superior ratings were: Wallace Cleaveland, tuba; Marion Johnson, 'cello; Mary Wyrick, viola; Nuncio Pomodoro, clarinet; Mary Merritt, James Courshon, Libby Ruback, clarinet trio; Betty Mae Nelson, Jane Griffith, Mary Wyrick, and Marion Johnson, string quartet. Bill McConnell, violin; and Alice Ledyard, French horn, won excellent, and Ed Clarke, trumpet, good.

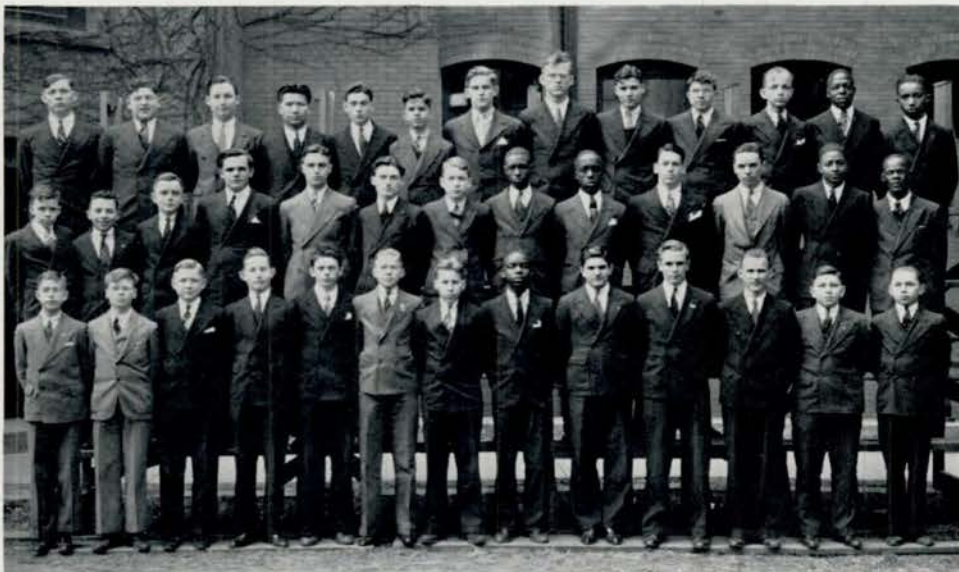
This year, for the first time in music history, choirs competed in the national contest. Each section picked the winning choir from that district, and then next year these few selected choirs will go to St. Louis for the national contest. The a cappella choir went to Lawrence, Kansas, to give a concert for the competing choirs and also to sing in a choir made up of all the contestants, which was directed by Mrs. Pitts.

Other concerts were given at Tekamah, Nebraska, for the Woman's Club at Joslyn Memorial, and at Central's auditorium for an insurance convention. At the end of the year is the seventeenth Annual Music Festival.



Girls' Senior Glee Club

Calabria, Shurtz, Braden, Porter, Kent, Catlin, Robertson, Jensen, Tatelman, D. Nelson, Myers, Lindee, Tureo, Kern
 Pitts, McDonough, Storie, Griffith, Meyer, Jones, Merchant, Nissen, Kursawe, Waldron, Lindevall, Bella, D. White, Nurzise
 Brown, Waite, Kirkpatrick, Hiner, Marks, Ledyard, Belmont, Cole, Fregger, Trotter, Dvorak, Miller, Forrest, Borton, Oldham
 Bruett, Paulsen, Maenner, Keats, Thompson, Slabaugh, Davis, V. White, McMartin, Emery, McManigal, Payne, Hosman, Knott, Morton



Boys' Senior Glee Club

Tobias, Goldstein, Rips, Chin, Carp, Cooper, Salstrand, Roberts, Armstrong, Ogden, Wolf, Hayden, Mason
 Blanton, Konecky, Neafus, Kvenild, Bernstein, Goodwin, Gogela, Burden, Chambers, Richter, Stephenson, Blair, Williams
 Smith, Anderson, McBride, Berman, Mercer, Reisser, Eggers, Crowley, Veneziano, Wells, Swoboda, Haddad, Langpaul



Girls' Junior Glee Club

Gossett, Horan, King, Barnett, Pratt, Challman, Payne, Mackley, Young, Brock, Donaldson, Whidby, Simpson,
 Albaugh, B. Davis, Murrell, Rhone, Thomas
 Sellz, Digilio, Jensen, Beaton, Hicks, Crafton, K. Peterson, Ware, Anderson, Heimrod, Foster, McDonald,
 Maenner, Walker, Richey, Bachelter, B. Brightman, Mallory
 Glasshoff, Decker, McIntyre, Marsh, E. Smith, Tukey, Wrenn, Huskins, Narcise, Beasley, C. Smith, R. Bright-
 man, Adams, Gettman, Chrisinger, Palmquist, Selner Moody
 London Bruhn, Finer, Walker, McCampbell, Traub, Griffith, Burr, Zyne, Rimmerman, Epstein, Chesler,
 Gardner, Neuhaus, Butler, H. Nelson, Carlson, Wright, Drebert
 Bakewell, Reed Splawn, Harden, Burkett, Thorpe, Harriss, Fiedler, Lipsey, Rothkop, M. Davis, Tyler, Vajgrt,
 Niess, De Joy, Schwennecker, Leurs, Kazeros
 Milligan, Wohlner, Wichhart, Hultman, Burns, Dickinson, Sledge, Sheehan, Piccolo, Clowley, Mallo, Conbay,
 Orso, Gasser, Baumer, Fuhrer



Boys' Junior Glee Club

J. Williams, Washington, Sanders, Filipcie, Catalano, Plechos, McAdams, B. Adams, Beitel, Gargano,
 Vaccaro, Simmons, Munt, Bohac
 San Filippo, Plotkin, Finkel, Frauks, F. Williams, Peterson, Karpf, Nachtigall, Hunter, Mitchell, B. Adams,
 Herrington, Seagren, Abboud
 Bjorback, Pisale, R. Johnson, Larson, Fuller, Perelman, Atkinson, Mead, Weber, James, Picciotti, Keller,
 Campbell, Schuetz



Orchestra

Grasso, Veneziano, Dignoti, Gass, Pomodoro, Morris, Roberts, Lee, McConnell, C. Schantz, Still, Courshon S. Turkel, Mallett, Whitney, Adams, Brigham, G. Griffith, Vacanti, Forehead, Lippert, Senter, Sing Glasshoff, Hornstein, Ruback, Ostrand, N. Turkel, Simon, Larsen, Miller, Cleaveland, McDonough, Saferstein, Dytert, Kulhaneck, Lewis Burr, Riha, Ledyard, Wyrick, Nelson, J. Griffith, Joe R. Soshnik, Johnson, Thomas, Sgroi, L. Schantz, Merritt, M. Griffith

NOT IN PICTURE: Clevenger, Kulesh

Orchestra

To give all students a chance to come into close contact with great music literature and to act as one of the social service organizations of the school are the main purposes of the Central High school orchestra under the direction of Henry G. Cox.

At all dramatic and musical performances the members of the orchestra do their share toward making each presentation a success and give unsparingly of their time and effort. It is for that reason that the orchestra is considered a service as well as a cultural organization. To stimulate student expression, Mr. Cox, many years ago, pioneered the plan of student direction of the orchestra. At first, his plan was not generally accepted; however, at the present time, it is becoming more and more popular.

Last winter the orchestra combined with the orchestras of Benson and North High schools and gave a concert in the Joslyn Memorial auditorium. This concert, by the first well-balanced high school orchestra in the history of the Omaha schools, was given on Friday, February 19. In the district music contest, the orchestra was represented in nine events. These were: Class A Orchestra, String Quartet, Clarinet Trio, Violin Solo, Viola Solo, Cello Solo, Clarinet Solo, French Horn Solo, and Tuba Solo. The rating received by the orchestra, string quartet, clarinet trio, and by four of the soloists was "Superior." The other two soloists received "Excellent" ratings. This was by far the best showing ever made by a group of Central instrumentalists.

The orchestra officers for this year were: president, Joe R. Soshnik; first vice-president, Wallace Cleaveland; second vice-president, William McDonough; third vice-president, Paul W. Griffith; secretary, Marian Johnson.



Central High Players

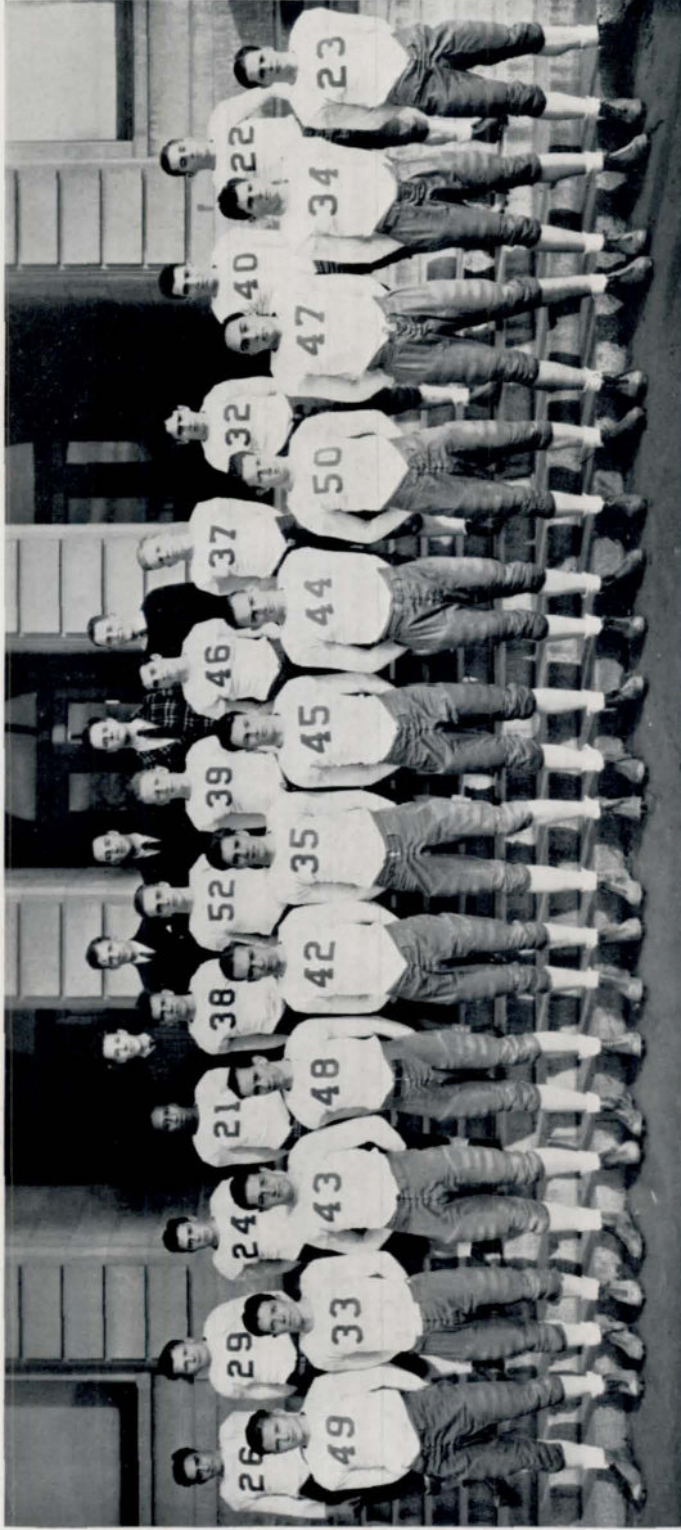
Pettengill, McDonald, Scott, Hull, Margolin, Dansky, Bressman, Tate, Porter, Rosenblum, Carp, Goodwin, Malm, Rogers, Madison
 F. Tatelman, Ovington, Azorin, Smirnoff, Jewell, Kadis, Hasenjager, Sykes, Higgins, McNutt, Anderson, Dulin, Oldham, Corritore, Dawson, Wolfson
 Mokofsky, Morris, Travis, Parker, Prime, Lee, Waldron, Changstrom, Sibbernson, Merritt, Solman, Firestone, Vitale, Koory, Ralston, Wood, Anderson
 Rosenblatt, Conley, Kirshenbaum, Hiner, Sheehan, Eiseman, Tindell, Borg, Cramer, Hopewood, Ditzen, Brown, Vanecek, McGee, Hollingshead, Simon, Beasely, Gershater, Storie
 Scott, Nielsen, A. Tatelman, B. Rosen, Lagmen, Bordy, Garber, A. Rosen, Knudsen, Bliss, Low, Menagh, Slosburg, Backlund, Gorelick, Wagenseller, Robinson

Central High Players

Having made rapid strides in gaining school interest and increased membership for their club, the Central High Players have completed another successful year under the sponsorship of Miss Frances McChesney and Miss Myrna V. Jones. The club, intended to promote interest in dramatics and afford students an opportunity to participate in stage activities, now has a membership of well over one hundred, with new members constantly being added.

The outstanding and perhaps most noteworthy event in the schedule of the Central High Players' activities is the fall play. In school importance and quality of production, this play now ranks with the road show and the opera. This year "Growing Pains," a mildly satiric comedy on adolescence, was presented November 7, 1936. The play drew a packed auditorium, and proved as humorous, enjoyable, and excellently acted as all had expected. Other activities of the year included a spring banquet, the new initiation ceremony, a tea for mothers of club members, and a scrapbook to contain newspaper clippings about the organization. All these ambitious, varied undertakings mark the Central High Players as an energetic and very active departmental club.

Election of the club officers was held at the beginning of the year. Lisbeth Menagh was elected president; John Knudsen, vice-president; Ray Low, secretary; June Bliss, treasurer; and Buster Slosburg, sergeant-at-arms. These officers of the club all had leading roles in the play, "Growing Pains," and gave especially clever performances.



Football Team

Manager King, Coach Knaapple, Coach Justice, Manager Metz, Manager Otis
 Campagna, Weeks, Inserra, Hall, C. Kettelsen, DeBruiler, Seagren, Clark, Griffith, Garrotto, Barone, Fangle
 Sundberg, Kooontz, Hornstein, McCotter, Moran, R. Kettelsen, Grimes, Truscott, Bane Muskin, Haas, Campbell



Basketball Team

Vecchio, Castro, O'Brien, Kriss, McNeill, Manager Ostrand
 Koontz, Hall, Moran, Fox, James, Campbell



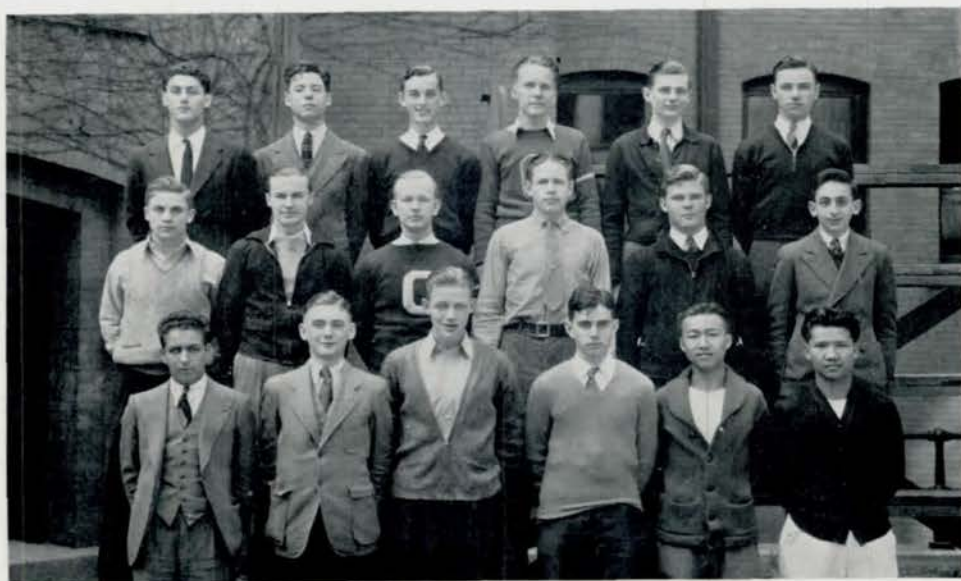
Track

Bloom, Hefflinger, Rodwell, D. Schmidt, H. Humphries, Mactier, Bressman, Banc, Kizer, Koontz, Eppen
 Phillips, Weeks, Holloway, Ralston, Haas, Truscott, Rohan, J. Griffith, Swartz, King, M. Anderson
 Rosita, Kvenild, McDonald, Murray, Illif, P. Griffith, Biddix, Taylor, Leonard Wells, Campagna, Seeman,
 Slosburg
 Ollifant, Weiner, Adams, Hall, Winston, J. G. Schmidt, C. M. Justice, McDaniels, J. Clark, Pittman,
 Louis Wells



Baseball Team

J. Elia, Minnarik, Manzitto, Kriss, C. Elia, Olson, Ossino, Muskin,
 Distefano, Ellis, Di Lorenzo, Bohan, McElligot, Baltzer, O. Vecchio, Curry,
 C. Vecchio, Klein, Hall, James, Koontz, Castro, Ostrand, Glass



Golf and Tennis Teams

Gordon, Haugh, Pratt, Uren, G. Cockle, Rogers,
 Slosburg, Walsh, Glissman, Clark, Knowles, Goldstein,
 Fredricks, J. Cockle, Williams, Garrett, C. Chin, W. Chin



Wrestling Team

Scigliano, Hornstein, Bane, Slosburg, Pirruccello, Bachman
 McElligot, Di Lorenzo, Hoberman, Truscott, Ketelson, J. Garrotto
 Vitale, Young, Campagna, Coach Bexten, Wilson, Evans, A. Garrotto



O-Club

Jorgensen, Dyhall, Grabow, Hoberman, C. Anderson, M. Campbell, R. Gordon, C. Fredricks, DiLorenzo, Low,
 Bachman, Wilson
 Campagna, Bohan, Humphreys, Hurt, DeBruler, Epplen, Moran, Hefflinger, Haugh, Sundberg, Vecchio,
 Castro, Pirruccello, Ossino
 Pangle, Harris, Uren, McNeill, Scigliano, J. Garrotto, Inserra, Weeks, Whittle, Moore, Winston, Ellis,
 Ostrand, Pitman
 Weiner, Metz, Werner, Seagren, Fox, McCotter, Muskin, Schwartz, Anderson, Bane, Griffith, J. Clark,
 Young, A. Garrotto
 Taylor, Hall, Glissman, D. Clark, Truscott, Haas, Grimes, Ketelson, James, Hornstein, Koontz, Kirshenbaum,
 M. Evans



Girls' Athletic Association

Hahr, Ott, McCampbell, Woolveton, Nellor, Plechos, Smith, Talkington, Raduziner, Bergman Vermillion, Griffith, Meredith, White, Hinrichs, Hoekstra, Wright, Herzberg, Thomas, Lester, Firtpatrick Dyttert, Laytin, Mehl, Yates, Welch, Lawson, Brauner, Barnett, Hammang, Paterno Piccolo, Keller, Rivett, Scott, Dansky, Hoye, Finer, Willard, Buzbee, Dohse, Morton

Girls' Athletic Association

The Girls' Athletic Association is composed of enthusiastic girls who enjoy tennis, riflery, swimming, hiking, dancing, hockey, volleyball, and baseball. Any girl interested in such activities is eligible to membership.

Central High school is one of four schools in Omaha which are members of the Nebraska State League of High School Girls' Athletic Associations. In an effort to standardize activities in the state of Nebraska, the league has adopted the point system under which members may work for four awards. They are: first, the emblem C with a numeral; second, the letter O; third, the triangular State Award; and fourth, the six-point State Award.

For each award a girl must have ten units of organized activity which were carried on under supervision. In addition, five units of activity such as bicycling, roller-skating, tennis, golf, and similar activities not carried on under direct supervision of an instructor must be presented. She must also observe training rules for twenty-four weeks, pass an examination of the heart, teeth, feet, and posture, wear proper shoes to school, and make passing grades in at least three subjects.

Girls who received C's this year were: Anne Bergman, Miriam Dansky, Betty Hammang, La Juana Paterno, Patricia Piccotte, Josephine Sgroi, Norma Jeanne Talkington, Doris Vermillion, and Phyllis Willard. Lois Hoye received the triangular state award.

Mildred Laytin was president of the association this year. Other officers were: Wanda Lawson, vice-president; Mary Jimmy Welch, secretary; Eleanor White, treasurer; and Margery Rivett and Maydalene Keller, sergeants-at-arms.



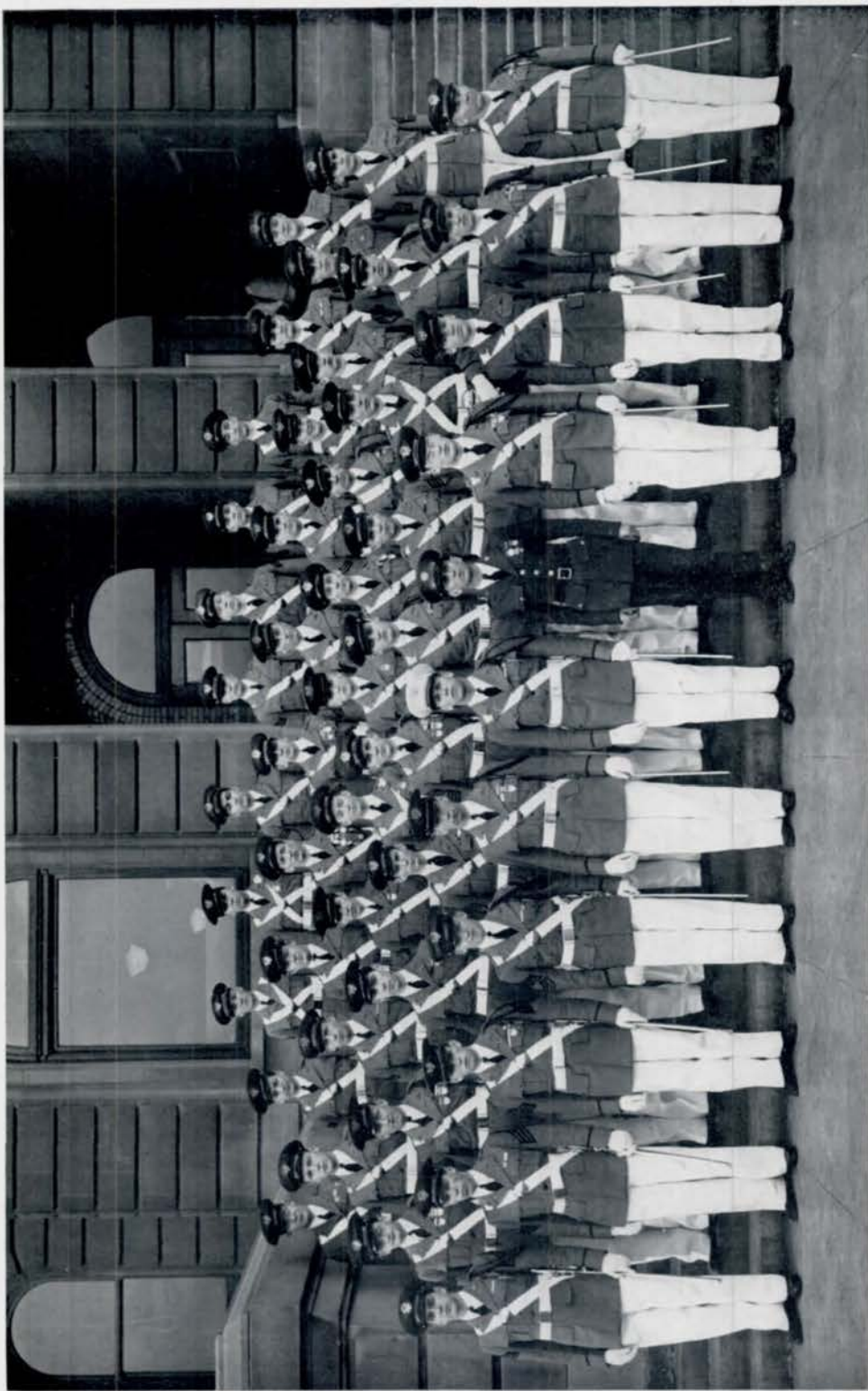
Girls' Sports

Hammang, Paterno, Yechout, A. Smith, Merritt, Nellor, Peterson, Dustin, Woolverton, Morton, Hoekstra, Hinrichs
 H. Plechos, Wolf, Pettengill, Lawson, Parkinson, Welch, Caldwell, Hoye, McBride, Macey, J. Paul, Larsen
 Wilson, Bakewell, Donaldson, E. Smith, Rossell, Schneider, Vermillion, J. Plechos, Conley, Wightman, Laytin,
 Thomas, King
 Jones, Nygaard, McCampbell, Herzberg, K. Paul, Mehl, Buzbee, Barnett, Lester, Born, Conboy, Brawner,
 Dansky



Girls' Swimming

J. Plechos, Tetard, Schaffer, Dawn, Payne, Cooper, Katzman, Dohse, Graves, Pearson, Friend, H. Plechas,
 Hambrae, Barelos
 Schneider, Burton, Hamilton, Yechout, Talkington, Lester, Lahr, Fecken, Bakewell, White, Catalano, Calabria
 Zimmerman, McNamara, Hess, McOmber, Kennedy, Hammelef, Ellison, Eyre, Dailard, Blumkin



Cadet Officers' Club

Robert B. Bernstein
Lieutenant Colonel



Donald C. McCotter
Major First Battalion
President C.O.C.



Lee Grimes
Major Second Battalion



Cadet Officers' Club

Lieutenant Colonel
Robert B. Bernstein
Major First Battalion
Donald C. McCotter
Major Second Battalion
Lee Grimes
Captain and Adjutant
Gordon A. Johnston
Captain and Ordnance
Edward P. Clark
Captain Company A
Henry A. Houser
Captain Company B
William C. Kennedy
Captain Company C
Charles F. McManus
Captain Company D
Edward K. Connors
Captain Company E
Eugene L. Jorgensen
Captain Company F
Alfred W. Gordon, Jr.
Captain Band
Paul W. Griffith
Captain and Quartermaster
H. Leonard Jacobson, Jr.
Captain and Personnel Adjutant
Thomas H. Fike
Captain, Plans and Training Officer
Maynard T. Swartz, Jr.
Captain and Commissary
William A. Milek
First Lieutenant and Adjutant
First Battalion
Ted H. Wood
First Lieutenant and Adjutant
Second Battalion
Lee H. Glissman
First Lieutenant Company A
Harry E. Seagren
First Lieutenant Company B
Robert W. Wherry

First Lieutenant Company C
James H. Whittle
First Lieutenant Company D
Alvah P. Whitmore, Jr.
First Lieutenant Company E
Virgil Noriega
First Lieutenant Company F
Dan Loring
First Lieutenants Band
Wallace R. Cleaveland
William J. McDonough
First Lieutenant and Aide
Walter H. Jones, Jr.
Second Lieutenant and
Quartermaster
First Battalion
Eugene G. Richardson
Second Lieutenant and
Quartermaster
Second Battalion
Verne Moore, Jr.
Second Lieutenants Company A
George A. Morton, Jr.
William Duffield
Second Lieutenants Company B
Gordon L. Randall
Edward E. Chait
Second Lieutenants Company C
Harry R. Bane
Richard Grabow
Second Lieutenants Company D
Harry H. Devereux
George R. Burns
Second Lieutenants Company E
Clark S. Haas
Louis R. DiLorenzo
Second Lieutenants Company F
Edmund O. Barker
Richard C. Ellis

Second Lieutenants Band
Joseph R. Soshnik
Gerald Beem
Second Lieutenants Staff
Craig A. Miller
C. Meade Chamberlin
Francis H. Chambers
Stuart H. Ganz

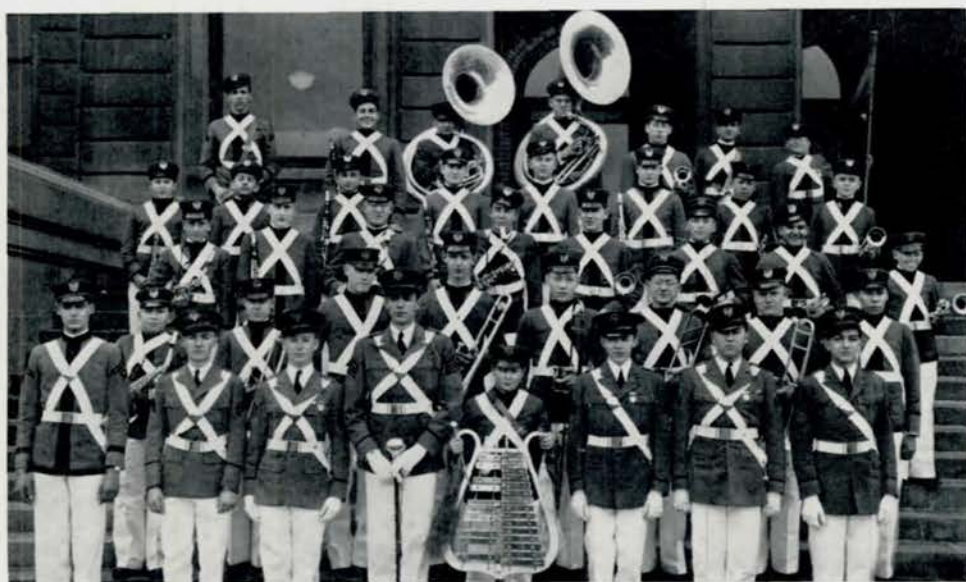
Beth Howley
Honorary Colonel





Crack Squad

Nestor, Seemann, Rogers, Buchanan, Humphreys, Carey, Stelzer, Olson, Duffy, Helgren, Haugh, Miller,
 Martin, Anderson, Wales
 Osborne, Rodwell, Grimes, Brown



Band

Clevenger, Pomodoro, Lippert, M. Roberts, Forehead, Grasso, Eastlack
 Simon, Ruback, Bohac, Courshon, Schantz, J. Davis, McNutt, Neafus
 Eisenstatt, Yohe, W. Johnson, Standeven, Rosenblum, Sahn, Veneziano, Ostrand
 Haddad, Larsen, Whitney, Vacanti, Freshman, Karpf, Still, Sing
 Brigham, Beem, Cleveland, Griffith, B. Davis, McDonough, Soshnik, C. Miller



Engineers

McCotter, Howley, Bernstein, Connors
 Wilson, Brown, Childe, Loring, Osborne, Jorgensen, Moore, Jacobson, Swartz, Justice, Pangle
 Gordon, Martin, Milek, Grimes, Kennedy, McManus, Houser



Rifle Team

Sergeant Wyatt, Jorgensen, Whittle, Clark, Grabow, Werner, Broad, Dyball
 Duffy, Taylor, Eyre, Petersen, Bean, Barakat



Junior Red Cross

McBride, Slosburg, Humphreys, Murdock, Bressman, Sachse, Murray, Schuetz, Wickham, De Wald, Steinert, Byrne, Lynch, Kopperud, Ensor, Hollcroft, Lierk, Van Camp, Horeis, Traub, Rainey, Hascall, Harrison, Burke, S. Noble, Gaden, M. Noble, Clarke, Westering, Johnson, Wolf, Nelson, Willrodt, Hassler, Ernst, G. Odorizio, Wilkinson, Barker, Miss Stockard, Yeager, Klammer, O. Odorizio, Ralston



Central Committee

Fike, Slosburg, Helgren, Olson, Nestor, McCotter, Houser, Grimes, R. Buchanan, Seeman, S. Hoffman, N. Buchanan, Coyne, Condon, Byrne, C. Buchanan, Dwyer, Myers, P. Pratt, S. Miller, Thomas, V. L. Pratt, Baird, Baumer, Beranek, Howley, Boien, Frazee, D. Kopperud, Holman, Gallup, Wood, Goodrich, J. Clark, Rushton, M. Miller, Blaufuss, Barish, Knox, B. Clark, Brugman, M. J. Kopperud, P. Hoffman



Speakers' Bureau

Bunce, Neble, Schmitt, Henderson, McNeill, Barber, Westering, B. Burns, Hebert, Ralston, Gordon Parr, Ferryman, Sinclair, Cleaveland, Jacobs, Whitney, W. Chin, Rose, DeBoice, Margolin, Schoenberger Panska, Wahlstrom, Polyzois, D. Anderson, G. Burns, Bressman, Foulks, Lorjng, Jackson, Harris Howe, Farquhar, Brown, Lipsey, Soshnik, Gallup, Chamberlin, Barker, Hasenjager, Bruhn

The Speakers' Bureau

In September, 1921, under the direction of the Expression and Debate Departments and with the aid of all other departments, the Speakers' Bureau was organized. The establishment of such a bureau grew out of the need of the school for interesting and convincing speakers. Heretofore, much speaking had to be done in the rooms for the purpose of advertising and making announcements, which had not met with faculty and student approval.

The aim of the Speakers' Bureau was to bring in closer contact the student body and recognized school activities. Membership in the Bureau was open to the entire school. It was not limited to the Public Speaking and Debate classes. Since there were many students in Central who proved themselves excellent speakers but had not had the opportunity to serve the school in this role, all students were required to try out with a sample speech and if this were acceptable, such student was placed on the roll of the Bureau. The Bureau proposed to take care of all speeches for authorized school activities. If a faculty member had a special announcement, he was to notify the person in charge of the Bureau together with the particular points to be brought out.

At present, the membership of the Speakers' Bureau averages about fifty per semester. The students receive activity credit for this service but they must answer three-fourths of the calls. The effectiveness of the Bureau has been definitely felt in great drives and other important activities.



Mathematics Society

J. Richardson, Duda, Turner, Knudsen, Hayward, Johnson, Dyball, Pulos, Catlin, Else, Humphreys, Bradner, Seagren, Griffiths, Grimes, McManus, Morris, Kuppinger, McConnell, Feldman, Scighiano, Murdock, Houser, Osborne, Nestor, Morton, Bernstein, McNeill, Miller, Bunce, Brown, Soshnik, Epplen, Helgren, Rose, Martin, Anderson, Fike, Kirshenbaum, Johnston, Devereux, G. Richardson, Cooper, Ovington, Harnett, Myers, Milek, Connors, Olson



Gentlemen's French Club

Fike, Putt, B. Selby, Reed, Seemann, Burns, Carey, Gordon, Connors, Randall, Ziegler, Swartz, Osborne, Combs, Sample, D. Selby, Barker, Miss Bozell, Buell, Buchanan, Slosburg



Greenwich Villagers

Merritt, E. Smith, A. Johnson, J. Mossman, O'Hara, Murray, P. Wagenseller, Evers, Rogers, Berkowitz, Piccolo, Batt, Keates, Rychly, McIntosh, V. Johnson, L. Cooper, Farquhar, Bremers, Byerly, Maystrick, B. Maxwell, Shapiro, Corkin, Paepfer, Dvorak, Metcalfe, Dimond, Zenke, O'Neill, I. Gorelick, Evans, Hollis, Riewe, Short, M. Piper, N. Buchanan, Mortensen, Borton, Klammer, P. Smith, J. Traub
 NOT IN PICTURE: Brigham, E. Carney, Lake, Larese, Wyrick

Greenwich Villagers

The Greenwich Villagers, a club for art students, was organized in 1922 for the purpose of promoting interest in art. Its members are comprised of those people from the art department who show exceptional ability in creative work, and who wish to develop their talents along this line. Each year new members are taken in to replace the outgoing seniors. This occasion is always celebrated by some form of entertainment. This year's initiation was a hit parade party with various impersonations of famous movie stars.

The Greenwich Villagers enter into various activities throughout the year. One of the most important is the Christmas tea to which all students and faculty are invited. This Christmas an art exhibition of Japanese prints and faculty are invited. Often exhibits of commercial and fine arts are brought to the school. This year the club secured an exhibition of costume design from the Trahagen School of Costume Design in New York City. Also, a display of original etchings, woodcuts, and lithographs by members of the American Artist Group was shown.

Prizes in the annual art contest of ten dollars, five dollars, and three dollars were won by Elizabeth Farquhar, Inez Corkin, and Karen Mortensen, respectively. Two honorable mentions of one dollar were awarded to Peggy Wagenseller and Eleanor Brigham.

Officers are chosen once a year. For the past year the officers were as follows: Karen Mortensen, president; Mary Piper, vice-president; Virginia Borton, treasurer; Eleanor Brigham, secretary; Natalie Buchanan, reporter. Miss Mary Angood is sponsor of the club.



Project Committee

Else, Burstein, Rogers, Benolken, Abrahamson, Viener, McAvin, Feldman, McDonald
 Riha, Kent, Bell, Miss Clark, Starry, Antos, Piper, Gatzmeyer, Goldstein
 Hellerman, Duda, Starrett, Ormsby, Purdham, Handford, Anderson, Brauch, Brown, Johnson
 NOT IN PICTURE: Cagniglia, Gilchrist



Home Economics Club

V. Larson, Zollotuchen, D. Larson, Peterson, Novah, Fenske, Murray, Bennett, Schuetz, Woodbridge
 L. Saylan, H. Saylan, Carter, Kohler, Murphy, Swanson, McNulty, L. White, Wickham, Spar, Kirshenbaum
 Rychly, Rosicky, Pegler, Jackson, Miss Stockard, Bachelor, Nelson, Wolfson, Silverman, S. White



Lininger Travel Club

M. J. Kopperud, Noble, Kaster, Kennedy, Ensor, Finlayson, C. Holman, Brugman, M. Holman, S. Hoffman, Hascall, Harrison, Lynch, Buchanan, Sibbersen, York, Williams, Weaver, Condon, Coyne, Stockman, Welch, Neely, Gaden, Clark, Myers, B. Beerman, Steinert, Duda, Adams, Ball, Bates, D. Kopperud, Thomas, P. Hoffman, Purdham, Ormsby, P. Beerman, Walsh, Beranek, Stuht, Tunison, Utt, Pederson, Fishberg, Lipsey, Pratt, Sprague, Knox, Yousem, Clark, Johnson

Lininger Travel Club

Lininger Travel Club, the oldest club in Central High school, was organized in 1903 and was named after Henry Lininger, a noted traveler and explorer who lived in Omaha. Mr. Lininger owned a large art gallery at Eighteenth street and Capitol avenue, a large part of which was turned over to the Omaha Public library at his death.

The present officers of the club are Rozanne Purdham, president; Jessie Clark, vice-president; Jayne Williams, secretary; Mary Jane Kopperud, treasurer; Florence Kennedy and Shirley Hoffman, sergeants-at-arms. Miss Mary Parker, Mrs. Grace Knott, and Miss Margaret Mueller are the faculty sponsors. To join the club, the girls fill out applications and are voted on by members of this all-girl club.

Among the travel speakers appearing before the club this year were Mrs. Myrtle Mason, who spoke on her trip abroad; Mrs. Farrar Newberry, talking on Arkansas; D. A. Ritchie, whose topic was "Head Hunting in the Philippines"; and Mrs. Gould Dietz, who talked on the Red Cross convention in Japan, while Mr. Dietz showed movies of the convention.

Under the direction of Mrs. Grace Knott, the club gave baskets to poor families on Thanksgiving and Easter. A family is taken care of by the club during the school year.

The purposes of Lininger Travel club are to gather information about the customs of other countries, to inspire a friendly interest in foreign affairs, and to realize the possibilities and value of world peace. Several girls whose mothers at one time belonged to the club are members this year.



Student Control

Alpers, Meyers, Fredericks, Yohz, Rawson, Lower, Hasenjager, Sachse, Stockman, Gaden, Dulin, Crites, Short, Williams
 Smith, O'Hara, Klammer, Antos, Wiese, Whetstone, Stone, Ovington, McWilliams, Kelly, Harriss, Gilinsky, Tindell, Borg, R. Cooper
 Soref, Simon, Wertheimer, McIntyre, P. Wagenseller, Changstrom, Bock, Sykes, Merritt, Jurgens, Meiches, Katz, Clayman, Byerly, Lovgren, Keller, Z. Cherniss, Macey
 Cooke, Azorin, Gogola, Laytin, Welch, Dustin, Meyers, Beerman, Bates, M. Piper, Mauro, Sutura, Fishberg, E. Brown, Wesley, Mallo, V. L. Pratt
 Rainey, Bell, O'Neill, Buchanan, Kincaide, Ormsby, Dodds, F. Morris, Tatelman, Weiner, Jetter, Swengil, Miller, Rosen, McGee, Resnick



Student Control

Pisasale, Pearson, Frohardt, Catalano, Crouse, Nelson, Gariss, Posley, Neafus, Pulos, Peterson, Wolfson, Delrogh, A. Wilson
 Tuchman, B. Pederson, Shan-der, Harrison, Hascall, White, Fee, S. Jones, Hunt, Carson, Noble, Berner, Pettengill, Zollotuchen, Carter
 Blacker, Christie, Thorup, Wood, Nepomnick, Blaufuss, Howley, Walker, Boien, Tholl, Berkowitz, Chait, Stepanek, Liibbe, Urquhart
 V. Pedersen, Prime, Paulson, McGinnis, Rosicky, R. Jones, Mann, Spar, Goldstein, Wolfson, Strauss, Keller, Robinson, Wickhart, Traub, M. Wagenseller, Hartman
 Wolfson, Menagh, Smernoff, McNulty, Harnett, Nygaard, Friedel, Rubnitz, Lincoln, Mirowitz, Linda, R. Rosen, B. Brown, Wheeler, Hamann, Schneider, Hess, V. Johnson



Student Control

Beem, Rapp, Ralston, Rimmerman, M. Shapiro, P. Shapiro, McDonald, Clevenger, Cook, Hinchcliff, Sims, Felipo, Lincoln, Beitel, Arceri, Gottneid
 Coyne, M. Thomas, Maenner, Bliss, Stuht, Tunison, Yeager, Wilkinson, Beck, Ensor, Horeis, Holleroft, Kern, Nachtigall, Di Lorenzo, Wightman, Courshon, Joyce
 Hassler, Ralston, Abramson, Porter, Butterworth, Carleton, E. White, Osheroff, Kirkpatrick, Fry, Whitney, Forsell, Cifuno, Olmstead, Brawner, Chorney
 Alberts, Odorisio, Starrett, Davis, Kadis, Dvorak, Harrison, Parks, Nielsen, Newman, Wintroub, Slater, Katzman, Liddell, Leffer, Baum, Fellman
 White, E. Morris, Rosen, Kull, Koehler, P. Meyers, Vasko, H. Lincoln, Sherman, Wyrick, Nelson, Rosenblatt, Silverman, Cherniss, Firestone, Friedlander, Bloch, Eisman



Titians

Ryan, Vermillion, Lupo, Whetstone, Stave, Wilcox, B. Williams, Smith, Carlberg, Tholl, Prime, Hamilton, Richey
 Tyler, Billig, Combs, Byerly, Starry, G. Odorisio, Burke, Brugman, Lierk, Davis, Morris, Slater
 O'Neil, Brandt, Bergman, Geifman, Fingeret, Emery, Riha, Mrs. Jensen, Robinson, Cherniss, Silverman, Vogel



Cinderella Ball

Virginia Lee Pratt chosen Miss Central III at an all-school girls' party sponsored by Student Control



Discussion Club

Lewis, Guss, Goldstein, V. Wintroub, Crouse, Morgenstern, Bruhn
 B. Wintroub, McAvin, Arthur, Crandell, Morris, Hill, Rosenbaum
 Richards, Dethelfs, Ganz, Goodbinder, Wolfson, Silverman



Stamp Club

Gottneid, Morton, Hendricks, Acker, Waldie, Mactier, Gillies, Daily, Smith
 Cohen, Dewell, Chin, Macalister, Scott, Tannenbaum, McPhail, Hammer, Olson



Colleens

Knott, Wrenn, Nelsen, Elaine Carney, Eloise Carney, Grest, Rychly, Knight, Dansky, Neary, Uren, Griffin,
 O'Neal, Keates
 Blumkin, Frank, Goldstein, Maxwell, Richman, Carter, Neilsen, Lierk, Berkowitz, Wolfson, Maystrick,
 Leaser, Bernstein
 Arbitman, Epstein, Blacker, Fishberg, Marks, Larese, Osoff, Rubnitz, Sherman, Dodds, Friedel, Piper,
 S. Wolfson, Silverman
 Zimmerman, Milder, Borden, Prime, Holmstrom, Kincaide, Allyn, Lipsey, Monsky, Metcalfe, Wohlner, Bliss,
 Levinson, Himmelstein



Colleens

Greenberg, Ward, Woodhouse, Gaden, Boien, White, Murray, Schuetz, Richardson, Solomon, Wickham,
 Snyder, Osheroff, Block
 C. Holman, Myers, Rosenstock, Kulakofsky, Traub, Westering, Yeager, DeLong, Steinert, Williams, Wilkin-
 son, Strauss, De Wald, Mokoofsky
 Enos, Shapiro, Fox, Schantz, McNulty, Johnson, Boukal, Van Camp, Laytin, Walsh, Rundell, Vitale, Civin,
 Davis
 Brown, Menagh, Harrison, Schneider, Buchanan, Wolfe, V. White, McGee, Beerman, Brauch, F. Firestone,
 Hanson, A. Firestone



Colleens

Scholder, Kursawe, F. Morris, E. Morris, M. Noble, Kopperud, S. Noble, Swarr, Pegler, Van Dusen, Shirley Epstein
 Laferla, Griffith, Hascall, Dytert, Rice, Kuetensky, Woodbridge, Lynch, Carson, Burke, Byrne, Robinson
 Resnick, Tuchman, Harrison, Nepomnick, Ralston, Lindevall, Nordstrom, McQuade, Kelly, Peterson, Nielsen, Schneider
 Crouse, Bates, Hassler, Piper, Clarke, Brigham, Klammer, Rosicky, A. Keller, M. Keller, Rosenblum, Rainey
 Harnett, Fortune, Ware, York, Stockman, Berner, Sibbensen, Tindell, Blazek, Fiedler, Sylvia Epstein, Garber



Colleens

Rivett, J. Anderson, Messina, Finlayson, Stepanek, McWilliams, Beck, Jolley, Sprague, Mallo, D. White, Rosenstein, Nothnagel, Linda
 Sklar, Buchanan, Christie, Clayman, Myers, Ovington, McMartin, Parker, Travers, N. Myers, B. Beerman, Crites, Hamilton, Atkins
 Rottner, Voss, Frazee, Emmert, Hosman, McIntosh, Paeper, Hicks, Ensor, Johnson, Horis, Hanford, Nelsen, Finer, Corritore
 Lerner, Leftitz, Cooper, Stein, Baum, Kadis, Riewe, Bachman, Pomidora, Cherniss, Kaster, Borton, Jetter, Catalano, Hornstein, P. Katzman
 Kirkpatrick, A. Rosen, R. Rosen, B. Rosen, S. Katzman, Ormsby, Starrett, Payne, Dawn, O. Odorisio, G. Odorisio, Wintraub, Friedlander, Bloch, Abrahamson



Latin Club

Hull, Busch, Freymann, Koory, Devereux, Johnson, Krause, Stein, Milek, Bradford
 Stevenson, Wiesman, Rice, Harris, Bremers, Tobias, Endelicato, Picotte, Belmont, Ralston
 Jensen, Cooke, Piper, Kulakofsky, Baysdorfer, Bane, Swoboda, Waechter, Agee, Goldstein
 Katzman, Nelsen, Marvin, Soiref, Snyder, Sommer, Kaiser, Randell, Kalmansohn, Gershter
 Chue, James, Christensen, Mallory, Rosenstein, Satropa, Moore, Stepanek, Hoeldobler, Hansen, Morris, Atkins



Latin Club

Eyre, Porter, Thomas, Rodwell, Lee, Overholt, Horan, Grimes, Young, Leary
 Cain, Brown, Hall, Stein, Findley, Baldrige, King, Chuda, Carson, Pittman
 Grasso, Courshon, Hefflinger, Kreck, Bloom, Levine, Carroll, Otis, Lincoln, Holland, Chambers
 Brown, Kirkpatrick, Christie, Enos, Mailand, Cooper, Payne, Dawn, Wilkinson, Westering, Carson, Warrell,
 Yale
 Keller, Maxwell, Marsh, McQuade, Trotter, Merritt, Meuches, Neary, Odorisio, Norstrom, Olmstead, Linda,
 Doyle



German Club

Dailey, Krimlofsky, McAvin, Williams, O'Brien, T. Mossman, J. Mossman
 Murdock, Hoberman, Frohardt, Yohe, Miller, Koscielski, Hellerman, Wolfson
 Frohman, Dimke, Jensen, Thorup, Posner, Hartman, Wolf
 Meyer, Parker, Rohan, Willrodt, Sahn, Nothnagel, Kursawe, Levenson, Jorgenson



Los Sabios

Craft, Sinclair, Nesselson, Schwartz, Berman, Nebel, Herzberg, Paterson, Pratt, Schoenberger, Reznick,
Friedman, Klein, Struck, Godden
 Johnson, Hornstein, Bedell, Stone, Boukal, Ensor, Knox, Lindevall, Dustin, Fustos, Zimmerman, Lübbe,
 Lipari, Louis, Jetter
 Goldstein, Wolfson, Görellick, Feldman, Wrenn, Wiese, Mrs. Vartanian, E. Morris, Urquhart, Lewis,
 Lorenzen, Friedman, Alexander, Hollcroft, Seigliano, Civin, Wright
 Blumkin, Fox, Arbitman, Crounse, Kull, Schneider, Brauch, Baum, Wheeler, Strauss, Jensen, Eyre, Miller
Abrahamson, Wintroub, Landstrom, Horcis, Owens



Le Cercle Francais

Maenner, Bell, Wilkinson, Horan, Yeager, Thomas, Grest, Haggerty, Clark, Lovgren, Crites, Goodrich, Albert, Rosenstock, Byrnes, Baumer, A. Baird, S. Baird, McCrory, E. Carney, Schruman, Gallup, Dwyer, Wertheimer, Frank, Rosen, Rushton, Blacker, Seybold, Nielsen, Lierk, O'Neal, Myers, Dodds, L. Dwyer, Rainey, White, Allyn, Lahr, Kincaide, Miss Pilling, Miss Mahoney, Miss Bozell, Blaufuss, McWilliams, Holmstrom, Olmstead, Parkinson

Le Cercle Francais

Le Cercle Francais, whose purposes are to promote interest both in the French language and in the country of France, and to create between the young people of America and France a feeling of friendliness, was founded in February 1923. It was organized by a group of French students whose desire it was to extend an interest in the language, literature, and customs of France. For each member of Le Cercle Francais a correspondent of the same age in France is obtained. Letters and photographs are exchange; sometimes newspapers and magazines.

The first sponsors of the club were Madame Barbara Chatelain, Miss Bess Bozell, instructors in French. This year's sponsors are Miss Bozell, Miss May Mahoney, and Miss Ruth Pilling. The officers for the year are Mary Jean Parkinson, president; Eleanore Berner, vice-president; Alyce Blaufuss, treasurer; Virginia Lee Pratt, secretary; Anabel Shotwell and Sarah Lee Baird, sergeants-at-arms.

The club, prior to 1925, consisted of both boys and girls who had a year's study of French or its equivalent. At this time, however, as the girls and boys have various activities on different days, it became necessary to separate the meetings.

Every year the club gives a donation to the Community Chest and every Christmas they take care of a poor family, sending them food, clothing, and toys for the children. For the last two years, instead of giving a play as was the previous annual project, Le Cercle Francais and the Gentlemen's French club have sponsored a dance in the school gymnasium. This year's dance called "Cords and Skirts" was given on April 10, and featured recordings of Benny Goodman's orchestra.

Senior Popularity Contest



Pratt
McCotter

Purdham
Barker

Howley
Wood

Myers
Swartz

Buchanan
Dansky

Baumer
Bernstein



Baird
Harris

Dwyer
Loring

Byrne
Houser

Knox
Gordon

Beranek
Tate

Corkin
Haas

Senior Popularity Contest



Holmstrom
Fox

Menagh
Moore

Welch
Truscott

Cooper
Jackson

Blaufuss
Randall

Girls

Ideal Central Girl
Virginia Lee Pratt
Most Likely to Succeed
Rozanne Purdham
Most Popular
Beth Howley
Prettiest
Grace Marie Myers
Best Scholar
Natalie Buchanan
Best Natured
Alyce Blaufuss
Peppiest
Hap Baird

Best Actress
Lisbeth Menagh
Most Sophisticated
Virginia Dwyer
Best Athlete
Mary Jimmie Welch
Best Line
Virginia Dwyer
Best Artist
Inez Corkin
Best Musician
Liberty Cooper
Best Dressed
Betty Byrne

Best Dancer
Beth Howley
Best Voice
Doris Holmstrom
Most Personality
Winifred Baumer
Wittiest
Betty Knox
Most Romantic
Joy Beransk
Sweetest
Grace Marie Myers

Boys

Ideal Central Boy
Don McCotter
Most Likely to Succeed
Ed Barker
Most Popular
Ted Wood
Best Looking
Maynard Swartz
Best Student
Abram Dansky
Man About Town
Tinner Gordon
Biggest Bluffer
Gordon Randall

Best Actor
Verne Moore
Biggest Nuisance
Ira Jackson
Biggest Promoter
Charles Harris
Best Athlete
Al Truscott
Best Line
Dan Loring
Best Artist
Clark Haas
Best Musician
Abram Dansky

Best Dressed
Henry Houser
Best Dancer
Gayle Tate
Best Natured
Bill Fox
Most Personality
Bob Bernstein
Wittiest
Tinner Gordon
Best Caveman
Maynard Swartz
Best Mannered
Ed Barker