

O

'35



Designed and cut by Mary Ellen Dickerson

O-BOOK

Central High School

SENIOR CLASS



OMAHA, NEBRASKA

VOLUME XLIX

1935

STAFF

EDITOR-IN-CHIEF
DOROTHY BALDWIN

ASSOCIATE EDITORS
CATHERINE GAMERL
MARJORIE HOUSER
JAMES LEFFLER
HARLAN MILDER
BUELL NAUGHTIN
PEARL OSOFF
ELINOR REYNOLDS

ART EDITOR
HELEN GOLDSMITH

BUSINESS MANAGERS
HERBERT HILDEBRAND
LOUIS GOGELA

CIRCULATION MANAGERS
JACK ALLGAIER
JAMES BUCHANAN

LITERARY ADVISER
ANNE LANE SAVIDGE

ART ADVISER
MARY L. ANGOOD

BUSINESS ADVISER
O. J. FRANKLIN

C O N T E N T S

PART I

ADMINISTRATION

SENIOR ALBUM

PART II

HONORS

LITERARY

MUSIC

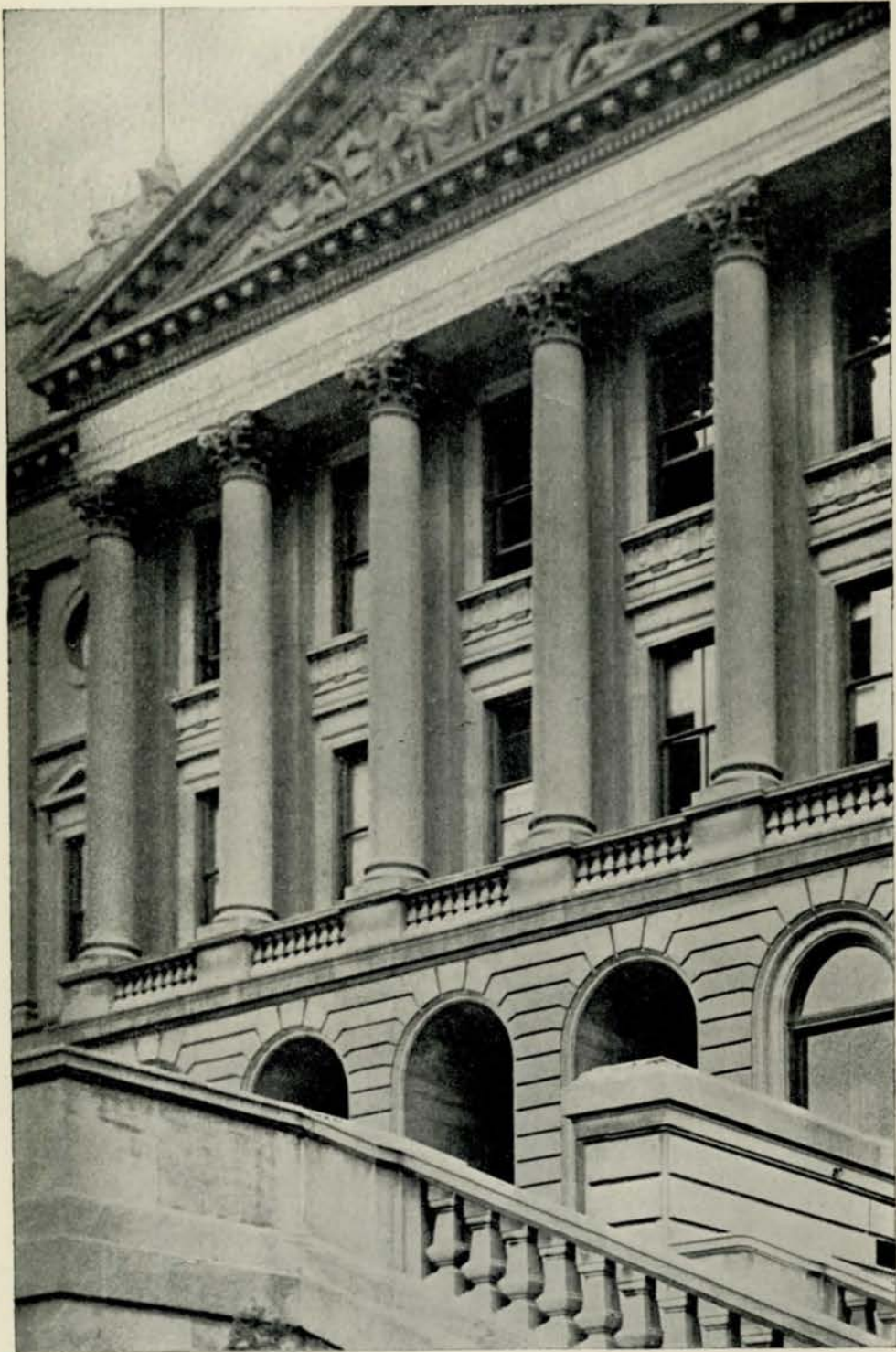
MILITARY

ATHLETICS

PART III

CLUBS

AUTOGRAPHS



EAST ENTRANCE
CENTRAL HIGH SCHOOL



JOSEPH G. MASTERS

PRINCIPAL



FRED HILL
ASSISTANT PRINCIPAL
DEAN OF BOYS



JESSIE M. TOWNE
ASSISTANT PRINCIPAL
DEAN OF GIRLS



DR. H. A. SENTER
DEAN OF FACULTY

CENTRAL HIGH SCHOOL FACULTY

FRED HILL
ASSISTANT PRINCIPAL
DEAN OF BOYS

JOSEPH G. MASTERS
PRINCIPAL

JESSIE M. TOWNE
ASSISTANT PRINCIPAL
DEAN OF GIRLS

DR. H. A. SENTER
DEAN OF FACULTY

ENGLISH

SARA VORE TAYLOR
BERTHA NEALE
TILLIE C. ANDERBERRY
NELL BRIDENBAUGH
JULIA T. CARLSON
AUGUSTA KIBLER
GRACE H. McMANUS
MARGARET A. MUELLER
FRANK M. RICE
ANNE LANE SAVIDGE
HELEN L. SOMMER
LOUISE STEGNER
MARTINA SWENSON
JESSIE M. TOWNE
IDA A. WARD
ALICE WEST

MATHEMATICS

AMANDA E. ANDERSON
G. E. BARNHILL
R. B. BEDELL
L. N. BEXTEN
MAYBEL BURNS
GRACE FAWTHROP
FRED HILL
PEARL JUDKINS
SARAH A. RYAN

HISTORY

GENEIVE W. CLARK
IRMA COSTELLO
MARY E. ELLIOTT
EDITH C. FIELD
ELSIE FISHER
JULIETTE GRIFFIN
ELIZABETH KIEWIT
MARY A. PARKER
NELLE RANDALL

MODERN LANGUAGES

BESS BOZELL
BARBARA A. CHATELAIN
ELLA L. PHELPS
PEARL ROCKFELLOW
MARGARITA VARTANIAN
CHARLES M. JUSTICE

LATIN

BERNICE S. ENGLE
JANE T. FULTON
BESSIE S. RATHBUN
ROBERT L. RIGLEY

PHYSICAL SCIENCE

F. H. GULGARD
J. G. SCHMIDT
DR. H. A. SENTER

NATURAL SCIENCE

CAROLINE E. STRINGER
JENNIE E. HULTMAN
HELEN C. LANE

SOCIAL SCIENCE

AUTUMN DAVIES
IRMA COSTELLO
F. Y. KNAPPLE
EDITH C. FIELD

DEBATE

SARAH A. RYAN
FRANK M. RICE

EXPRESSION

MYRNA VANCE JONES
NED GREENSLIT

MUSIC

CAROL M. PITTS
IRENE HASKINS JENSEN
ELSIE HOWE SWANSON
HENRY G. COX
LYLYAN CHUDACOFF

MECHANICAL DRAWING

O. J. FRANKLIN

MANUAL TRAINING

L. N. BEXTEN

ART

MARY L. ANGOOD

JOURNALISM

ANNE LANE SAVIDGE

COMMERCIAL

EDNA S. DANA
GERTRUDE KNIE
GRACE M. KNOTT
HARRIET R. HARRIS
ANGELINE TAUCHEN
MILDRED TANGEMAN
ADA EWING

HOUSEHOLD ARTS

CHLOE STOCKARD
RUBY RICHARDSON
MARY WISEMAN

PHYSICAL TRAINING

GLEE G. MEIER
CHARLES M. JUSTICE

CAFETERIA

RUBY RICHARDSON

LIBRARY

ZORA SHIELDS
CATHERINE S. BLANCHARD
HAZEL C. STEWART

OFFICE

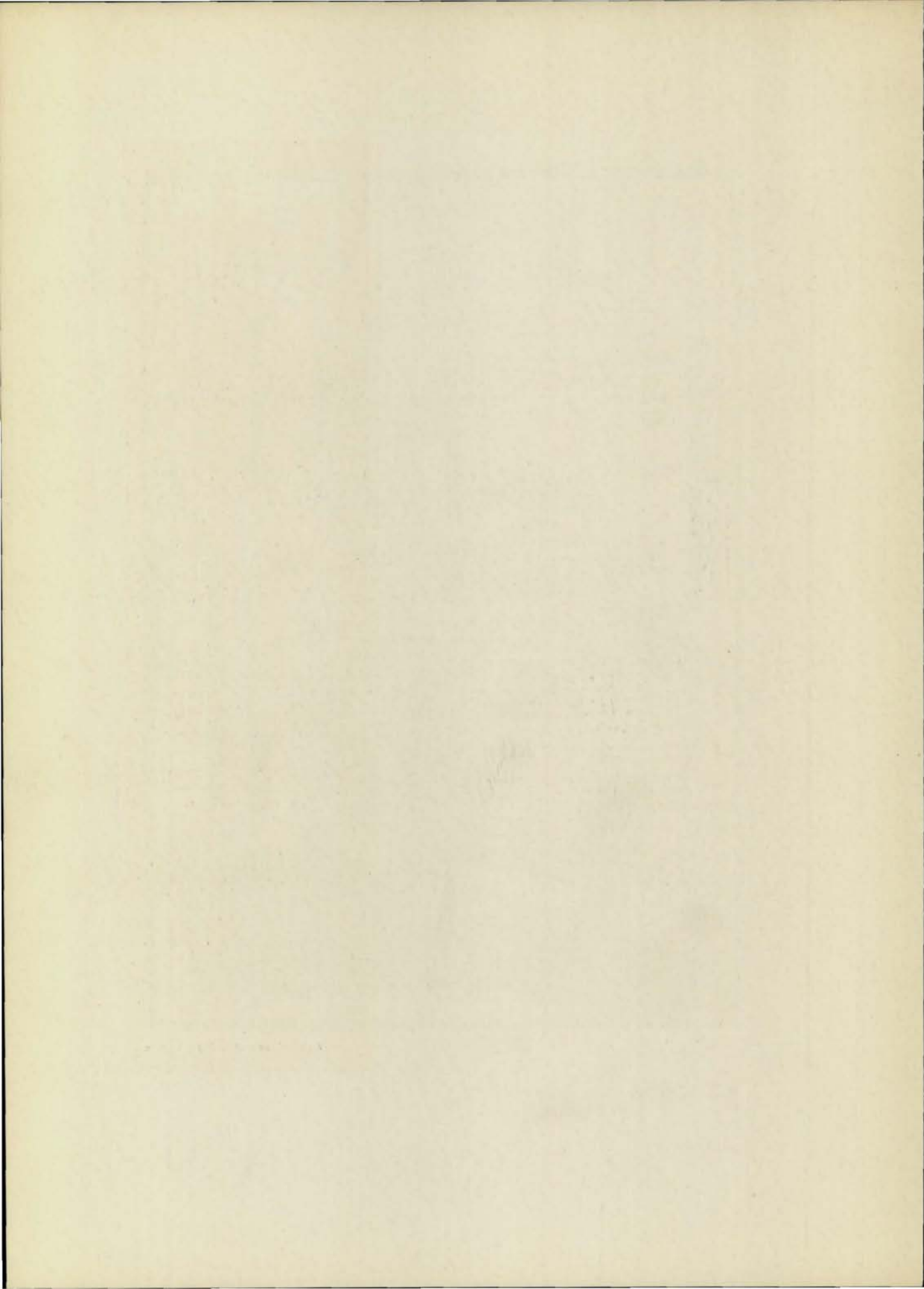
ADRIAN WESTBERG, sec'y
DOROTHY BARBER
HELEN BLINT
JENNIE ROBERTS

CLERK OF BOOKROOM

PAULINE HARTNETT



Designed and cut by Bruce Jepson



TOM REES

NATIONAL HONOR SOCIETY

President, June Class; Junior Honor Society (1,2,3); Regiment (1,2,3,4); First Lieutenant (4); Crack Squad (3); C.O.C. (4); Gentlemen's French Club (2,3,4); President (4); Library Monitor (4); Road Show (2); French Play (2,4); Track (4); Boys' Rifle Team (4)

One of the most highly respected fellows in school

BOB LUNDGREN

NATIONAL HONOR SOCIETY

Vice-President, June Class; Junior Honor Society (1,3); O-Book Staff (4); Regiment (1,2,3,4); First Lieutenant (4); Engineers (3); Crack Squad (3); C.O.C. (4); Mathematics Society (2,3,4); Boys' O-Club (3,4); Road Show (3,4); Library Monitor (4); Golf (3,4); Track (1)

A Beau Brummel who captures many a maiden's heart

BOB ROGERS

Regiment (1,2,3,4); Captain (4); Engineers (4); Crack Squad (3); C.O.C. (4); Gentlemen's French Club (2,3,4); Central Committee (3,4); Mathematics Society (1); Atlas Club (2); Speakers' Bureau (1); French Play (2,4); Senior Play (4); Secretary, June Class

A finer fellow would be hard to find

HARLAN MILDER

Regiment (1,2,3,4); Captain and Ordnance (4); C.O.C. (4); Treasurer; Treasurer, June Class; Central Committee (4); Library Monitor (4); O-Book Staff (4)

*His sparkling eyes attest his wit
A jolly "cut up," a genuine hit*

JEAN SLABAUGH

Girls' Senior Glee Club (2); Girls' Junior Glee Club (1); A Cappella Choir (3); Opera (2,3); Sergeant-at-Arms, June Class

Always the center of attraction

BOB BUELL

President, January Class

A boy who just radiates personality

VIRGINIA HAINES

NATIONAL HONOR SOCIETY

Register Staff (3,4); Quill and Scroll (3); Central High Players (3); Vice-President, January Class; Junior Honor Society (3)

A literary genius

LEONARD WHITE

Junior Honor Society (2); Central High Players (1); Forensic Society (2,3); Latin Club (3); Register Staff (4); "Daddy Long Legs" (2); Boys' Junior Glee Club (2); Discussion Club (3,4); Treasurer, January Class

Count on Leonard to do the job well

BARBARA ROSEWATER

NATIONAL HONOR SOCIETY

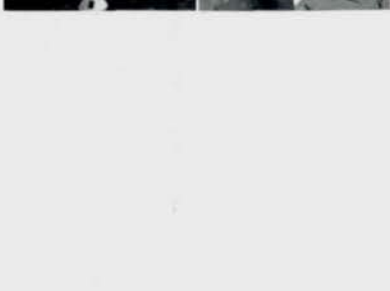
Junior Honor Society (1,3); Quill and Scroll (4); Le Cercle Francais (2); Central Colleens (3,4); Student Control (3,4); Central High Players (3,4); Library Monitor (4); French Play (2); Dramatics (4); Register Staff (4); O-Book Staff (4); Reviewers' Staff (4)

A sincere student and journalist who will succeed

BILL CHEEK

Regiment (1,2,3,4); Major (4); Engineers, (4); C.O.C. (4); President; Manager of Road Show (4); Sergeant-at-Arms, June Class; Monitors' Council (4)

*Though he's quiet, it's alarming
How his silence makes him charming*





JOE ABBLOUD

Baseball (2,3), Captain (3), Manager (4); Boys' O-Club (2,3,4); Gym Club (1,2,3,4); Wrestling (2,3); Register Representative (3)

A little man, but so was Napoleon



EILEEN ANDERSON

Student Control (4); Girls' Junior Glee Club (1); Swimming (1,2); Road Show (4); Make-Up (3,4)

A charming blonde of whom everybody's fond



ELIZABETH ALLEN

Junior Honor Society (1,2); Central Colleens (1,2,3,4); Le Cerele Francais (1,2); Lininger Travel Club (4); French Play (2); Student Control (3,4); Library Monitor (4); Swimming (1,2)

*A sweet and pleasing face
A charming air of grace*



EUGENIA ANDERSON

Central Colleens (3); Library Monitor (4); Central High Players (4); G.A.A. (2,3,4); Make-Up Mistress for Operetta (4); "Daddies" (4); Swimming (1); Sports (3,4)

An obliging girl



JACK ALLGAIER

O-Book Staff (4), Circulation Manager; Register Staff (4); Regiment (1,2,3); Gentlemen's French Club (3,4), Vice-President (4); Los Sabios (2); Central Committee (2,3,4); Road Show (4); Biology Round Table (2); Library Monitor (4); Football (1); Senior Play (4); French Play (4)

A business-like nature showing financial ability



MAXINE ANDERSON

A Cappella Choir (4); Opera (3); Girls' Senior Glee Club (3); Girls' Junior Glee Club (2); Costumes (4); Library Monitor (4); Swimming (4)

A placid countenance conceals her winning way



HELEN ALLIS

NATIONAL HONOR SOCIETY

Junior Honor Society (3); Central Colleens (1,2,3,4); Opera (1,2,3,4); Girls' Junior Glee Club (1); Girls' Senior Glee Club (1); A Cappella Choir (2,3,4); Boosters' Club (1,2); Student Control (2,3); National Music Supervisors' Convention (3); Library Monitor (3,4); Road Show (4)

*Helen does her studies well
A brilliant future we foretell*



VONCEIL ANDERSON

Girls' Junior Glee Club (1); Girls' Senior Glee Club (2); A Cappella Choir (3,4)

Dignity and reserve, that's Vonceil



DONALD ANDERSON

Los Sabios (3); Boys' O-Club (3,4); Golf (3,4); Library Monitor (4)

Donald is very thorough and industrious in all he does



MARY ARBITMAN

Quill and Scroll (4); Register Staff (3,4); News Editor (4); O-Book Staff (4); Central Colleens (1,2,3,4); Student Control (2,4); Girls' Junior Glee Club (2); Lininger Travel Club (3,4); Le Cerele Francais (4); Latin Club (3); French Play (4); Spring Frolic Chairman (4); Library Monitor (4); Swimming (2); Editor, Senior Marathon

A clever girl, successful in everything she does

EVERNA ASHWOOD

Titians (1,2,3,4); Student Control (3,4); Central Colleens (2); Girls' Senior Glee Club (1); Opera (3); Road Show (3,4); French Play (4); A Cappella Choir (2,3,4); Girls' Junior Glee Club (1); National Music Supervisors' Convention (3)

A sweet and enchanting Titian

VIRGINIA AUSTIN

Greenwich Villagers (3,4), President (4); Inter-Club Council (1); Girls' Junior Glee Club (1); Road Show (4)

Small of size, but large of fame "Ginny" Austin is the name

JAMES BAER

National Athletic Honor Society (3,4); Regiment (1,2,3,4), First Lieutenant (4); Engineers (4); Football (1,2,3,4); Track (2,3,4); C.O.C. (4); Boys' O-Club (2,3,4); Student Control (4); Road Show (3,4); Senior Home Room Chairman (4)

Besides athletic ability he is known for his wit

CHARLOTTE BAILEY

Girls' Junior Glee Club (4); Basketball (4); Rifery (4); Hockey (4)

She serves her friends with all her heart

DOROTHY BALDWIN

NATIONAL HONOR SOCIETY

Quill and Scroll (4); Junior Honor Society (1,2,3); O-Book Staff, Editor-in-Chief (4); Register Staff (4); Lininger Travel Club (3); Central Colleens (1); Student Control (2); Girls' Senior Glee Club (1); Girls' Junior Glee Club (1); G. A. A. (1); Le Cercle Francais (4); Opera (4); Road Show (2,4); Swimming (2); Library Monitor (4); A Cappella Choir (2,3,4)

One of the sweetest girls ever In every way she's very clever

JULIAN BALL

Regiment (1,2,3,4), Captain and Adjutant (4); Engineers (4); Crack Squad (3); C.O.C. (4); Mathematics Society (4); Central Committee (4); Road Show (3,4); Library Monitor (4); Golf (2); Track (1)

A sunny disposition

JOYCE BALLANTYNE

Greenwich Villagers (3,4); Art Contest (4); Central Colleens (4); Student Control (4)

Her good nature and sweet disposition make her enjoyable to all

HELEN BANE

Volleyball (1,2), Captain (2); Basketball (1,2), Captain (1,2); Baseball (1); Student Control (3,4); Mathematics Society (2); Central High Players (3,4); Library Monitor (4)

An attractive brunette with quiet ways

RALPH BARTOS

Project Committee (1); Speakers' Bureau (4); French Play (3); Football (1,2,3); Regiment (1,2); Library Monitor (4)

Everyone is his friend

BILL BAVINGER

Regiment (1,2,3,4), Captain and Personnel Adjutant (4); Engineers (4); Monitors' Council (4), President; C.O.C. (4); Baseball (3,4); Tennis (3); O-Book Staff (4); Loquax (2); Latin Club (2); Road Show (4); Senior Play (4); Library Monitor (4); Los Sabios (4); Student Control (4)

Hard worker and a good sport





ELTA MAY BAYSDORFER

Girls' Junior Glee Club (2); Girls' Senior Glee Club (3); Opera (3); A Cappella Choir (4); Library Monitor (4); Swimming (1); Project Committee (1)

A quiet girl with a twinkling eye

HARRIET BERNSTEIN

Swimming (1,2); Girls' Junior Glee Club (2); Girls' Senior Glee Club (2,3); A Cappella Choir (4).

A girl with a charming voice



MARY LAURA BEAVERS

Central Colleens (1,2); Le Cercle Francais (4); Latin Club (2); Girls' Junior Glee Club (2,3); Library Monitor (4)

Her manner is calm and pleasant

JUNE BEXTEN

Hockey (2); Baseball (3); Volleyball (3,4); Greenwich Villagers (2,3); Student Control (4)

A jolly good sport with friends galore



JEAN BEBER

Senior Play (4); Central Colleens (1,2); G.A.A. (1); Student Control (1); Orchestra (2,3,4); Library Monitor (4); Swimming (2,3,4); Basketball (1); Baseball (1); Hockey (1)

A pleasant word and a cheerful smile for all

ARTHUR BIALAC

Regiment (1,2); Road Show (1,2); Student Control (1,4); Orchestra (3,4); Library Monitor (3); Atlas Club (1)

A bigger and better nature? There is none. He's worth his weight in gold



BETTY BEESON

NATIONAL HONOR SOCIETY

Junior Honor Society (1,2,3); Girls' Junior Glee Club (1); Girls' Senior Glee Club (2); A Cappella Choir (2,3,4); Opera (2,3,4); National Music Supervisors' Convention (3); Library Monitor (4); Loquax (2); Mathematics Society (3,4); Project Committee (1,2); Student Control (4); Latin Club (2); Secretary; Central High Players (4); French Play (4); Central Colleens (1,2,4)

A girl gifted with sweetness and capability

BARBARA BICKEL

Junior Honor Society (3); Opera (3); A Cappella Choir (3); Girls' Senior Glee Club (2); Girls' Junior Glee Club (2); Le Cercle Francais (3); Central High Players (4); Tennis (2); Central Colleens (2,3,4); Lininger Travel Club (2,3); Declamatory (4); Student Control (4); Library Monitor (4); French Play (3); Speakers' Bureau (3); G.A.A. (2)

There are not many as kind and unselfish as Barbara



BESS BERNSTEIN

Central Colleens (1,2,3,4); Girls' Junior Glee Club (2); Home Economics Club (4)

Bubbling over with pep and giggles

BETTY BICKEL

She accomplishes her work with a winning smile

JOHN BOCK

Regiment (1,2)

*Quiet but not shy
He's bound to satisfy*

NORMAN BOLKER

Junior Honor Society (1,2,3); Register Staff (4); Spanish Paper (2); Regiment (1,2); Quill and Scroll (4); National Forensic Society (3,4); Declamatory (3); Debate (1,2); Library Monitor (4); Forensic Society (1,2); Los Sabios (1,2,3,4); Discussion Club (1,2); Spanish Play (2); Track (4); Bee-News Correspondent (4)

A successful journalist

CALVIN BOSIN

Regiment (2,3,4), Sergeant (4); Latin Club, President (4), Vice-President (3); Loquax, Advertising Manager (3); Project Committee (2,3)

A good sport and a good pal

TOM BROWN

Track (3,4); Library Monitor (4)

*Quiet thoughts, but ever worth
while*

JOHN BROWNLEE

Regiment (1,2); Track (1,2,3,4); Basketball (2,3); Boys' O-Club (2,3,4); Boys' Senior Glee Club, President (2); Boys' Junior Glee Club (2); Home Room Sergeant-at-Arms (3); A Cappella Choir (2,3,4); Latin Club (2); Dramatics (4)

A swell sense of humor

JIM BUCHANAN

Regiment (1,2,3,4), Captain (4); Engineers (4); Crack Squad (3); O-Book Staff (4), Circulation Manager; Register Staff (4); Loquax (1); Athletic Manager, Football (4); Track (1); Library Monitor (4); Boys' O-Club (4); C. O. C. (4); Road Show (3,4); Central Committee (4)

A man bound to succeed



DARLOW BURDIC

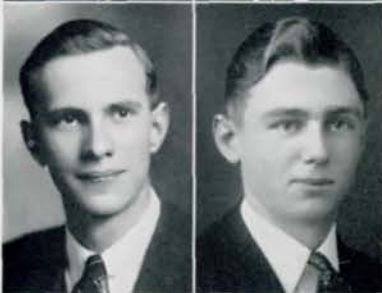
Slow but sure



VINCENT BURKE

Mathematics Society (4); Tennis (4)

*Serious, conscientious, and
trustworthy*



BETTY BURT

G.A.A. (1,2,3,4); Girls' Junior Glee Club (3); Girls' Senior Glee Club (4); Lininger Travel Club (3); Baseball (2,3); Basketball (2,3); Swimming (1,4); Hockey (1); Girls' Rifle Team (2,3)

*A sweet girl whom we'll miss when
she's gone*



CLARAMAE BYERS

Girls' Junior Glee Club (1,2)

*So patient, so dear, one can't help
but love her*





BETH CAMPBELL

NATIONAL HONOR SOCIETY

Orchestra (2,3,4); A Cappella Choir (2,3,4); State Music Contest (3); Road Show (3); Junior Honor Society (3); Central Colleens (4); Le Cercle Francais (4); French Play (4)

Beth is known for her musical ability



LOIS CALLAN

Girls' Junior Glee Club (1); Swimming (1); Home Economics Club (3); Los Sabios (4)

A bundle of good cheer



CLARICE CARLSON

Hockey (1); Basketball (1); Home Economics Club (3); Central Colleens (4); Student Control (4); G.A.A. (4)

Clarice is quiet and calm but ever so nice



ELAINE CARR

Junior Honor Society (3); Los Sabios (1,2)

A good student



FRANK CATANIA

An all-around athlete with the habit of making many friends

BETTY CATHERS

Her sunny disposition brightens many a dreary class

NANCY JANE CHADWELL

NATIONAL HONOR SOCIETY

Junior Honor Society (1,2,3); Register Staff (3); O-Book Staff (4); Quill and Scroll (3,4); Baseball (1,2,3); Basketball (1,2,4); Hockey (1,2,3,4), Captain (4); G.A.A. (1,2,3,4), Secretary (3); Girls' Rifle Team (4); Library Monitor (4); Student Control (3)

She's always good-natured

BILLIE CHAMBERS

Girls' Junior Glee Club (2); Girls' Senior Glee Club (3); Opera (3); Spanish Play (3); Los Sabios (4); Speakers' Bureau (4); Central High Players (4)

Impulsive and gay

ZELDA CHERNISS

Central Colleens (1,2); Girls' Junior Glee Club (2); Le Cercle Francais (3,4); French Play (4); Library Monitor (4)

A girl who's hard to beat

ELEANOR CHRISTENSEN

Girls' Junior Glee Club (2); Student Control (3,4)

There are sparkling stars in her eyes

RICHARD CHRISTENSEN

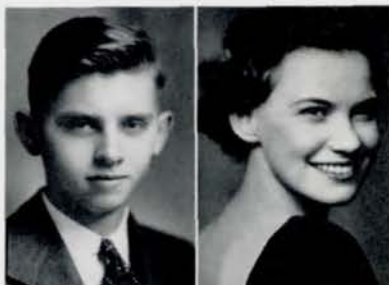
Regiment (1,2,3,4), Second Lieutenant (4); Orchestra (1,2,3,4); Road Show (1,2,3,4); French Play (2,4)

Need a good friend? Try Richard

FRANCES CLUCKER

Opera (1,2); A Cappella Choir (3); Girls' Senior Glee Club (2,3); Girls' Junior Glee Club (1); Home Economics (3,4)

There are not many as kind and unselfish as Frances



GRACE CIRCO

Girls' Junior Glee Club (3); Student Control (4); Commercial Awards (2,3); Swimming (2); Home Economics Club (4)

Quiet but willing

MYRON COHEN

NATIONAL HONOR SOCIETY

Junior Honor Society (1,2,3); Orchestra (1,3,4); State Music Contest (3); A Cappella Choir (2,3); Opera (1,2,3); Road Show (1,3); Boys' Junior Glee Club (1); Boys' Senior Glee Club (1); Tennis (1,2); Regiment (1); Mathematics Society (3,4); Atlas Club (1); Latin Club (2); Library-Monitor (4)

As a violinist he excels



CRAIG CLARK

Regiment (1,2); Football (1); Golf (3,4); Los Sabios (1,2); Project Committee (2)

Craig's a good fellow, faithful and true

LUCILLE COFFEY

Central Colleens (4); Baseball (1); Golf (1)

Sincere and quiet at all times



RUSSELL CLARK

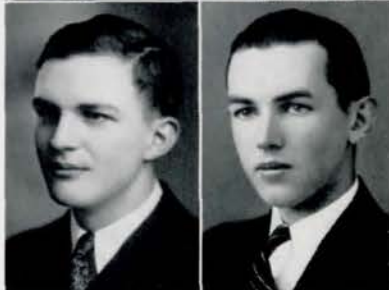
Regiment (1,2,3), Sergeant (3); Boys' Senior Glee Club (4); Boys' Junior Glee Club (3)

The best investment is investment in knowledge

DICK CONOVER

Regiment (1,2,3); Golf (2)

He can see a funny side to everything



DUDLEY CLOBRIDGE

Regiment (1,2,3); Boys' Junior Glee Club (1); Boys' Senior Glee Club (2); Opera (2); Road Show (3)

The kind of a fellow you like to be with

HOWARD COOPER

Regiment (1,2); Boys' Senior Glee Club (2); Boys' Junior Glee Club (1,2)

A good-natured, industrious chap





SAM COSENTINO

Full of inexhaustible good nature



MARJORIE CRUISE

A friendly heart has many friends



RUTH COREN

Central Colleens (2,3); Student Control (2,3); Latin Club (2,3); Swimming (1,2,3,4); Library Monitor (4)

Small but peppy



BILL CUNNINGHAM

NATIONAL HONOR SOCIETY

Junior Honor Society (1,2,3); Regiment (1,2,3,4); First Lieutenant (4); Mathematics Society (2,3,4); President (4); Road Show (3,4); Opera (4); Track Squad (2,3,4); Crack Squad (3); Rifle Team (4); C.O.C. (4); Boys' Junior Glee Club (3); Boys' Senior Glee Club (3); A Cappella Choir (4); Orchestra (1); French Play (4)

A brilliant, versatile fellow



VIRGINIA COSTANZO

Girls' Junior Glee Club (1); A Cappella Choir (2); National Music Supervisors' Convention (3)

A jolly fine girl



BERTHA DAILEY

G.A.A. (2,3,4); Baseball (2,3,4); Basketball (2,3,4); Hockey (2,3,4); Captain (4); Girls' Rifle Team, Captain (4)

Completely nice



LAURA COTTON

NATIONAL HONOR SOCIETY

Mathematics Society (2,3,4); Library Monitor (4); Student Control (2); Swimming (1); Property Crew (4)

*A hard worker
Always thoughtful and kind*



VICTORIA DAMICUS

Student Control (3,4)

*Smiling and amiable to everyone
she meets*



ROBERT CROSBY

Boys' Junior Glee Club (1); Boys' Senior Glee Club (2); Opera (3); Costumes (3,4); Swimming (1); Track (3); Wrestling (3)

*His quiet ways have won him many
friends*



AILEEN DANIELSON

Girls' Junior Glee Club (3); Girls' Senior Glee Club (3); A Cappella Choir (4)

Aileen is a reliable girl

EVELYN DANSKY

NATIONAL HONOR SOCIETY

Quill and Scroll (4); O-Book Staff (4); Register Staff (4); Library Monitor (4); Junior Honor Society (1,3); A Cappella Choir (3,4); National Music Supervisors' Convention (3); Opera (2,3,4); Girls' Senior Glee Club (2); Girls' Junior Glee Club (1); Central Colleens (1, 2,4); Student Control (3,4); Forensic Society (3); Debate (3); Latin Club (2); Mathematics Society (2); Loquax (2); Boosters' Club (1); Project Committee (1); Senior Play (4)

A jolly, peppy girl, always ready for a laugh

TOM DAVIS

Regiment (1,2); Basketball (1); Football (1,2); Library Monitor (4)

He's game for anything

VIOLET DeVANEY

Register (3,4); Central High Players (2,3,4); "College Widow" (2); Road Show (2); Make-Up (1,2,3, 4); Library Monitor (4)

A charming girl of great versatility

MARY ELLEN DICKERSON

O-Book Staff (4); Girls' Junior Glee Club (1); A Cappella Choir (2,3,4); National Music Supervisors' Convention (3)

A girl with a winning way

MARY DIETERICH

Central Colleens (4); Girls' Junior Glee Club (3); G.A.A. (4); Library Monitor (4)

A sweet girl with quiet charm

MARGIE DIVOKY

G.A.A. (1); Swimming (1,4); Basketball (3); Hockey (1); Library Monitor (4); Volleyball (1)

Peppy and always ready with a smile

JO JANET DODDS

Junior Honor Society (1,2); Central Committee (2,3,4); Girls' Junior Glee Club (2); Girls' Senior Glee Club (3); A Cappella Choir (4); Opera (3,4); Road Show (3, 4); Library Monitor (4); Le Cercle Francais (2,3,4); Sergeant-at-Arms (4)

She's fair and full of grace

BETTY DODSON

NATIONAL HONOR SOCIETY

Junior Honor Society (1,2,3); Loquax (3,4); Central Committee (2, 3,4); Lininger Travel Club (2,3); Secretary (3); Student Control (3); Girls' Junior Glee Club (2); Le Cercle Francais (4); Road Show (3,4); French Play (3)

One so sweet and clever is hard to find

ROBERT DRANEY

Library Monitor (3,4)

Men of few words are the best men

LUCILE DUDA

Mathematics Society (3); Student Control (3,4); Titians (3,4); Swimming (3,4); Road Show (4)

A vivacious Titian!





BOB DUNN

Student Control (4); Boys' Junior Glee Club (2); Boys' O-Club (2,3,4); Swimming (1,2); Football (1,3,4); Road Show (3,4)

If there is anything wrong with the world's he'll fix it



KENNETH DURDEN

Forensic Society (2); Student Control (3); Boys' Junior Glee Club (2); Boys' Senior Glee Club (3); A Cappella Choir (3,4); Opera (3,4); Central High Players (3); Library Monitor (4); Swimming (1); Declamatory (2)

His curly hair flashes just like his smile



JANE EAYRS

Road Show (4); Student Control (4); Library Monitor (4); Swimming (2,3,4); Central Colleens (2); Hockey (2); Basketball (1,2); Baseball (1,2)

A model of pep and cheer



KATHRYN ECK

Girls' Junior Glee Club (1); Girls' Senior Glee Club (2); A Cappella Choir (4); National Music Supervisors' Convention (3)

A friend to all



LEO EISENSTATT

NATIONAL HONOR SOCIETY

Quill and Scroll (4); Register Staff (4); Gentlemen's French Club (2,3); Speakers' Bureau (3); Boosters' Club (1); Road Show (1,2,3,4); French Play (2); Regiment (1,2,3,4); Swimming (2); Football (3); O-Book Staff (4); Library Monitor (4)

Leo strives to attain perfection in all his tasks

ALFRED ELICK

NATIONAL HONOR SOCIETY

Regiment (1,2,3,4), Captain (4); C. O.C. (4); Secretary (4); Monitors' Council (4); Library Monitor (4); Road Show (4); Mathematics Society (4); Central Committee (3,4); Speakers' Bureau (4); Chairman Senior Home Room (4); Engineers (4)

Beneath a serious exterior, he's a fun-loving spirit

JOHN L. ELLIOT

National Athletic Honor Society (4); Boys' O-Club (1,2,3,4); Track (1,2,3,4); Basketball (1,2,3)

An athlete, hard to beat

LORRAINE ELMBOG

O-Book Staff (4); Loquax (4); Library Monitor (4); Latin Club (4); Central Colleens (3,4)

Lorraine will make friends with everyone

LOIS FARBER

Opera (1,2,3,4); A Cappella Choir (3,4); Girls' Senior Glee Club (2); Girls' Junior Glee Club (1); National Music Conference (4); Central Colleens (2,3); Student Control (3); French Play (2,3)

A petite brunette with a sunny disposition

RUTH FERER

Central Colleens (1,2); Girls' Junior Glee Club (4); Le Cercle Francais (3); French Play (4)

Always joking and making fun. Her pranks and jollity are never done

ELIZABETH FIFE

Girls' Senior Glee Club (3); Girls' Junior Glee Club (1,2); Opera (3); Road Show (4); Swimming (1); Make-Up (4); Library Monitor (4)

A quiet student

HAROLD FINKEL

Regiment (1,2,3,4), Second Lieutenant (4); C.O.C. (4); Speakers' Bureau (2,3); Register Staff (3); Forensic Society (1,2); Golf (1,2,3); Opera (1,2,3); Road Show (1,2,3,4); Orchestra (1,2,3); Discussion Club, Secretary (2,3), Vice-President (4)

*Initiative and ambition
Scale toward a high position*

DONNABELLE FLETCHER

Swimming (1); Basketball (1,2); Hockey (1,2); Volleyball (1,2); Girls' Junior Glee Club (1); Girls' Senior Glee Club (2); A Cappella Choir (3,4); Student Control (3,4); Boosters' Club (1); G.A.A. (1,2,3); Latin Club (2,4); National Music Supervisors' Convention (3)

Her quiet charm is ever prevalent

BILL FLOTHOW

Central Committee (4); Inter-Club Council (4); Speakers' Bureau (4); Dramatics (3,4); Golf (1,2,4); Basketball (1)

Small, but so is dynamite

BETTY FLYNN

Road Show (4); Girls' Senior Glee Club (2); Girls' Junior Glee Club (1); Student Control (1,2); Home Economics Club (4)

*Individualistic, charming, and
brunette*

HERBERT FORBES

Latin Club (1); Discussion Club (3,4), President (4); Library Monitor (4)

*He's happy-go-lucky in both work
and play*

HELEN CLAIRE FORD

Student Control (4); Girls' Senior Glee Club (2); Girls' Junior Glee Club (2); Central High Players (4); Latin Club (2); Opera (2); Library Monitor (4)

*Filled with initiative and good
humor*

LOUISE FORE

NATIONAL HONOR SOCIETY

Junior Honor Society (1); Girls' Junior Glee Club (1); G.A.A. (1); Central Colleens (1,2); Student Control (3); Lininger Travel Club (3,4); Spanish Play (3); National Music Supervisors' Convention (3); Costumes (2,3,4); A Cappella Choir (2,3,4); Library Monitor (3)

*Her secret of success is efficiency
and purpose*

MARGARET FOSTER

Central Colleens (1,2,3,4); Student Control (3,4); Girls' Senior Glee Club (4); Girls' Junior Glee Club (3,4); Speakers' Bureau (4); G.A.A. (4); French Play (3); Library Monitor (4)

She meditates the way to success

MARY JANE FRANCE

Opera (1,2,3,4); Road Show (1,2,3,4); A Cappella Choir (1,2,3,4); National Music Supervisors' Convention (3); National Supervisors' Music Contest (4); Library Monitor (4)

The girl with the golden voice





DOROTHY FRIED

Los Sabios (1,3,4); Student Control (3); Spanish Play (3); Discussion Club (4); Central Colleens (1,3,4)

She's known by what she does

BERNETTA GEE

An ideal friend to all who know her



BOB FUCHS

Regiment (1, 2, 3, 4), Captain (4); Engineers (4); C. O. C. (4), Vice-President (4); Mathematics Society (4), Sergeant-at-Arms (4); Central Committee (4); Road Show (4); Library Monitor (4)

An independence of personality makes him attractive

SARAH GEMMA

Los Sabios (3,4); Central Colleens (1); Student Control (2,3,4); G.A.A. (2); Road Show (4); Swimming (1,2,4); Tennis (1,2); Golf (1,2); Hockey (2)

Fun-loving and a good companion



BETTY FULLER

Swimming (1,2,4); Make-Up (3); Home Economics Club (3)

Cheerful and a good student

FRED HURST

Student Control (3,4); Library Monitor (4)

He will hold to his purpose 'til he dies



CATHERINE GAMERL

O-Book Staff, Associate Editor (4); Register Staff (3,4); Los Sabios (2,3); Student Control (4); G.A.A. (4); Library Monitor (4)

*Sweetness, truth, and every grace
Are read distinctly in her face*

ROSEMARY GILLHAM

Home Economics Club (3,4); Library Monitor (4)

She has a personality we all love



JANE GAUGHRAN

Greenwich Villagers (1,2,3,4), Secretary (4); Central Colleens (1)

As an artist we expect great things

LESLIE GLASSON

Boys' O-Club (4); Regiment (2,3,4); Wrestling (1,2,3,4)

His ways are quiet, but silence is eloquent

RAYMOND GLISSMAN

C.O.C. Band (4); Road Show (4);
Boys' Junior Glee Club (4)

*Obliging in many a way
He'll make good some day*

JANE GOETZ

NATIONAL HONOR SOCIETY

Project Committee (1); Linger
Travel Club (3); Central Colleens
(1); Girls' Senior Glee Club (1);
Girls' Junior Glee Club (1); Le
Cercle Francais, Treasurer (4);
Boosters' Club (1); Latin Club (2);
Opera (3); French Play (4); Jun-
ior Honor Society (2,3); National
Music Supervisors' Convention (3);
A Cappella Choir (2,3,4)

*An attractive brunette with quiet
ways*

LOUIS GOGELA

NATIONAL HONOR SOCIETY

Quill and Scroll (4); O-Book Staff,
Business Manager (4); Register
Staff (4); Junior Honor Society (1,
2,3); Loquax (4); Student Control
(3,4); Library Monitor (4); Or-
chestra (4); Latin Club (3,4);
Road Show (4)

Science is wisdom

HELEN GOLDSMITH

O-Book Staff, Art Editor (4); Ti-
tians (1,2,3,4); Greenwich Villagers
(2,3,4), Treasurer (4); Student
Control (2); Girls' Senior Glee
Club (2); Girls' Junior Glee Club
(1); Library Monitor (4); A
Cappella Choir (2,3,4)

*Industrious, smiling, and ever
helpful*

CLARABELL GOODSSELL

Linger Travel Club (4); Central
Colleens (1,2,3); Le Cercle Francais
(2); Library Monitor (4); Home
Economics Club, Treasurer (3)

*Her modesty is a candle to
her merit*

ALMA GOZA

*We are glad this lovely miss
attended Central*

NAOMI GROSS

Orchestra (2); Road Show (2);
Central Colleens (1,2); Der Deutsche
Verein (1); Forensic Society (2);
Discussion Club (3)

Completely nice

ROSARY GRASSO

Home Economics Club (3)

*Good nature and common sense
must ever join*

JANICE GOULD

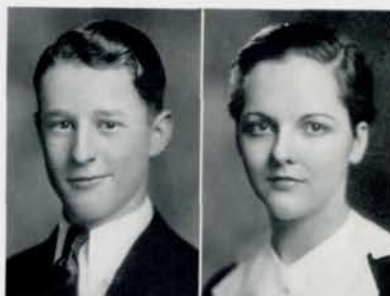
Latin Club (1,2); Central Colleens
(1,2); Road Show (4); French
Play (4); Le Cercle Francais (4)

*A pal to everyone she knows
She's well liked wherever she goes*

RUTH HALL

Greenwich Villagers (2, 3, 4); Art
Contest (1); Girls' Junior Glee
Club (3); Girls' Senior
Glee Club (4)

Graceful and tall, pleasant to all



**CLEO HAMILTON**

Central Colleens (4); Girls' Junior Glee Club (4)

A fine worker

EOLA HARPER

Central Colleens (4); Student Control (4); Girls' Senior Glee Club (3); Girls' Junior Glee Club (3); Opera (4); A Cappella Choir (4)

A cheery and chummy girl

**BETTY HAMMER**

Register Staff (4); Greenwich Villagers (2,3,4); Central Colleens (4); Student Control (4); Road Show (3); Library Monitor (4)

A pleasant smile and a cheerful word for everyone

ELAINE HARRINGTON

Lining Travel Club (1,2,3,4); Girls' Junior Glee Club (3); A Cappella Choir (4); Orchestra (1,3); Costumes (3); Swimming (4)

Steadily she proceeds, always she succeeds

**BILL HANEY**

Regiment (1,2); Los Sabios (3,4); Latin Club (3); Speakers' Bureau (2,3); Spanish Play (3); O-Book Staff (4); Senior Play (4)

May you always face the world with that same infectious grin

IRENE HARROLD

Girls' Junior Glee Club (4); Library Monitor (4)

She tries hard and always reaches her goal

**EUGENE HANSEN**

A real man

WALTER HARRIS

Regiment (1,2,3,4), Second Lieutenant (4); Track (2); C.O.C. (4); Road Show (4); Los Sabios (3)

Ever-anxious to please

**KERMIT HANSEN****NATIONAL HONOR SOCIETY**

Junior Honor Society (1,2,3); Regiment (1,2,3,4), Captain (4); C.O.C. (4); O-Book Staff (4); Mathematics Society (4); Monitors' Council (4); Library Monitor (4); Road Show (1,2,3,4); Opera (1,2,3,4); Dramatics (4); Spanish Play (3); Latin Club (1,2); Loquax (2); Speakers' Bureau (1); Home Room Chairman (4); National Music Supervisors' Convention (3,4); State Music Contest (1,2,3,4); A Cappella Choir (1,2,3,4); Boys' Junior Glee Club (1)

The loss of him will leave a place that can not quite be filled

JANE HART**NATIONAL HONOR SOCIETY**

Junior Honor Society (2,3); Quill and Scroll (4); Register Staff, Editor-in-Chief (4); Loquax, Assistant Editor (3) National Music Supervisors' Convention (3); Girls' Junior Glee Club (2); Girls' Senior Glee Club (2); A Cappella Choir (3,4); Opera (3,4); Road Show (3,4); Central High Players (3); Latin Club (2); Central Committee (2,3,4); Senior Play (4); Monitors' Council (4); Senior Home Room, Sergeant-at-Arms (4); Library Monitor (4)

A delightful girl whose ability proves that one can be beautiful and not dumb

BOB HEACOCK

Regiment (1,2); Boys' Junior Glee Club (3); Opera (4); A Cappella Choir (4); Library Monitor (4)

Bob doesn't say much. He doesn't need to

MARY HEAGEY

Loquax (3); A Cappella Choir (3,4); Road Show (3,4); O-Book Staff (4); French Club (3,4), Sergeant-at-Arms (3)

She's bubbling over with joy and fun

JAMES HEFTI

Regiment (3,4); Orchestra (4); Road Show (3,4)

A man of affairs, always doing something

DOROTHY HENNINGS

Register Staff (4); Loquax (3); Latin Club (3); Home Economics Club (4); Library Monitor (4)

A merry maid with a winning smile

MARGRE HENNINGSON

O-Book Staff (4); Register Staff, Assistant Advertising Manager (4); Student Control (4); Central Colleens (1,2,3,4); Girls' Senior Glee Club (2,3); Girls' Junior Glee Club (1); Girls' Natural Science Club (2); Le Cercle Francais (3); Home Economics Club (4); Opera (2,3); French Play (4); Swimming (4); Senior Paper, Associate Editor (4); Senior Play (4)

*She has pep and vitality
Amiability and personality*

PAUL HERSHMAN

Regiment (1,2,3,4), Major (4); Engineers (4); Crack Squad (3); Football (1,2,3,4); Boys' O-Club (3,4), President (4); C. O. C. (4); Road Show (3,4); Speakers' Bureau (4); Library Monitor (4)

*Snappy, spicy, full of wit
He's got "that," "them," "those,"
and "it"*

JULIA HERTZBERG

Library Monitor (4)

*She's well-liked and witty
And exceedingly pretty*

HERBERT HILDEBRAND

NATIONAL HONOR SOCIETY

Quill and Scroll (4); O-Book Staff, Business Manager (4); Register Staff (4); Junior Honor Society (1,2); Library Monitor (4)

*Whatever he enters is benefited by
his diligence and effort*

CHARLOTTE HINDMAN

Junior Honor Society (3); Lininger Travel Club (3,4); Central Colleens (3,4); Student Control (3,4); Girls' Natural Science Club (2); Library Monitor (4)

*Charlotte is her name
A twin of Central's fame*

HARRIET HINDMAN

NATIONAL HONOR SOCIETY

Junior Honor Society (1,2,3); Lininger Travel Club (3,4); Central Colleens (3,4); Student Control (3,4); Girls' Natural Science Club (2); Library Monitor (4)

*Harriet is the other twin
Wherever she goes she's sure to win*





ALTA HIRSCH

Register Staff (4); Central Colleens (2,3,4); Student Control (4); Girls' Junior Glee Club (2); Le Cercle Francais (4); Latin Club (2); French Play (4); Junior Honor Society (1,3); Quill and Scroll (4); Library Monitor (4); O-Book Staff (4)

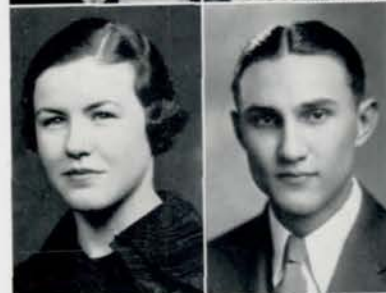
She is always ready to do her part



MILDRED HIRS

Girls' Junior Glee Club (1); Girls' Senior Glee Club (2); Central High Players (2,3,4); "College Widow" (2)

She meditates the way to success



HARRIET HOENIG

Road Show (3,4); Student Control (3); Girls' Junior Glee Club (1); Le Cercle Francais (1); Central Colleens (1)

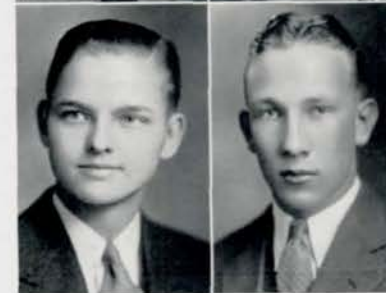
*Always jolly, never sad,
Harriet is always glad*



JACK HOENIG

Los Sabios (3,4); Speakers' Bureau (2,3,4); Central High Players (3,4); Stage Crew (1); Debate (1); Road Show (4); Spanish Play (3)

*Bright of mind and quick of wit
And always willing to do his bit*



FRED HOEFENER

Boys' Junior Glee Club (1); Boys' Senior Glee Club (1); A Cappella Choir (2)

*A genial disposition brings its
owner many friends*

BETTY HOFFMAN
Le Cercle Francais (4); Library Monitor (4)

*Smiling and amiable to everyone
she meets*

HELEN HOLMES
*She goes about her work in a quiet,
business-like way*

EDWIN HORACEK
Regiment (1); Basketball (2,3,4), Captain (4); Baseball (2,3,4); Boys' O-Club (2,3,4); Road Show (3,4)

My kingdom for a basketball

MARIE HOREJS
*A real friend, a good sport, and a
wonderful swimmer*

BILL HORN
Quill and Scroll (3,4); Junior Honor Society (1); O-Book Staff (4); Register Staff (4); National Athletic Honor Society (4); Los Sabios (3); Student Control (4); Boys' O-Club (4); Spanish Play (3); Wrestling (4); Football (3,4)

An all-around athlete and an all-around friend

JOSEPH B. HORNSTEIN

NATIONAL HONOR SOCIETY

Forensic Society (2); Los Sabios (3); Boys' Senior Glee Club (2); Boys' Junior Glee Club (1); Speakers' Bureau (3); C.O.C. (4); Central High Players (4); Opera (2, 3); Road Show (1,2,3,4); Regiment (1,2,3,4), Second Lieutenant, Band (4); Football (1,3); Junior Honor Society (2,3); Orchestra (1,2,3,4), President (4); Library Monitor (4); A Cappella Choir (3)

An outstanding musician with a good disposition

MARJORIE HOUSER

Quill and Scroll (4); O-Book Staff (4); Register Staff (4); Central Committee (2,3,4); Lininger Travel Club (3); Le Cercle Francais (3, 4), Secretary (3), Sergeant-at-Arms (4); Road Show (3,4); Dramatics (4); Library Monitor (4)

A real friend, a good sport, and a clever dresser

MARY INCINTRO

Greenwich Villagers (2,3)

Always anxious to please

MADREE JACKSON

Baseball (1, 2, 3, 4); Tennis (3,4); Basketball (1,2,3,4); Hockey (1,2,3, 4); Volleyball (1,2,3); Posture Contest (2); G.A.A. (2); Girls' Rifle Team (4); National High School Awards (2)

*With stately carriage and graceful poise
Always liked by girls and boys*

CURTIS JESSUP

An intelligent and friendly person

BERNARD JOHNSTON

Regiment (1, 2, 3, 4), Captain (4); Engineers (4); Crack Squad (3); C.O.C. (4); Mathematics Society (1,4), Treasurer (4); Road Show (3)

An equal mixture of good humor and good sense

MARYLOUISE JONES

NATIONAL HONOR SOCIETY

Girls' Junior Glee Club (1); Opera (2,3,4); Road Show (2,3,4); Junior Honor Society (3); National Music Supervisors' Convention (3); Library Monitor (4); A Cappella Choir (2,3,4)

Her sparkling eyes and cheerful humor are evident

ORVILLE JONES

Boys' Junior Glee Club (1); Wrestling (1); Track (4); Football (1); Regiment (1,2,4)

Orville never looks at the dreary side of things

JEAN JORGENSEN

Baseball (2); Basketball (1,2); Volleyball (1,2); Hockey (2); G.A.A. (1,2,3); Girls' Natural Science Club (2); Home Economics Club (4); Boosters' Club (1)

Silent, loyal, and serene

DEAN KADAVV

Regiment (1,2,3); Library Monitor (4); Boys' Junior Glee Club (1); Speakers' Bureau (3)

A good fellow to everyone





LETTIE KALWEIT

Student Control (2,3,4); Girls' Natural Science Club (2); Central High Players (3,4); Junior Honor Society (3); Library Monitor (3,4)

A genial disposition brings her many friends

LEE KENNARD

A Cappella Choir (4); Boys' Senior Glee Club (3); Speakers' Bureau (3); Senior Play (4); Spanish Play (3); Regiment (1,2)

His curly hair alone is worth a million, but Lee has many other fine points



HOWARD KAPLAN

NATIONAL HONOR SOCIETY

Register Staff, Circulation Manager (4); Gentlemen's French Club (3,4); Boys' Junior Glee Club (1); Boys' Senior Glee Club (1); C.O.C. (4); French Play (4); Regiment (1,2,3,4), First Lieutenant and Aide (4); Junior Honor Society (2); Library Monitor (4); A Cappella Choir (2,3)

A good fellow who is ever so much fun

PEGGY KENNEDY

NATIONAL HONOR SOCIETY

Central Committee (2,3,4); Lininger Travel Club (3,4); Road Show (3,4); Junior Honor Society (1,2,3); Orchestra (4); Library Monitor (4)

One of Central's best and most dependable



BOB KEELEY

Boys' Senior Glee Club (2); Boys' Junior Glee Club (1); C.O.C. (4); Regiment (1,2,3,4), Second Lieutenant (4); Boys' Rifle Team (4); A Cappella Choir (4)

Great things come in small quantities

WILLIAM KING

Student Control (3,4); Boys' Junior Glee Club (2)

William never looks at the dreary side of things



ROSEMARY KELLEHER

Los Sabios (2,3,4); Student Control (4); Gym Club (4); Spanish Play (3); Swimming (4)

Rosemary will go far

DICK KITCHEN

Student Control (4)

His slow drawl and friendly smile Reveal an interesting personality



JEAN KELLY

NATIONAL HONOR SOCIETY

Junior Honor Society (1,2,3); Monitors' Council (4); Lininger Travel Club (2,3,4), Treasurer (3), President (4); Central Committee (2,3,4); Library Monitor (4); Student Control (3); Loquax (2); French Play (2)

A bright personality, full of rascality

ERVINE KLEIN

National Athletic Honor Society (4); Boys' O-Club (3,4); Baseball (1,2); Basketball (1,2,3,4); Football Manager (4); Baseball Manager (4); Regiment (1)

Steadfast and faithful, Ervine's a hit He's always willing to do his bit

MARY PHYLLIS KLOPP

NATIONAL HONOR SOCIETY

O-Book Staff (4); Loquax (4); Le Cercle Francais (3,4), Sergeant-at-Arms (3), President (4); Road Show (4); Senior Play (4); French Play (4); Junior Honor Society (3); Library Monitor (4)

She has that certain "something" that attracts

BARBARA KNAPP

O-Book Staff (4); Titians (1,2,3,4), Secretary, Treasurer (3), President (4); Student Control (3); Girls' Senior Glee Club (2); Girls' Junior Glee Club (1); Opera (3,4); Swimming (4); National Music Supervisors' Convention (3); Library Monitor (4); A Cappella Choir (2, 3, 4)

Lovely red hair, snappy blue eyes and an entrancing smile

MABEL KNIPPRATH

Register Staff (4); Central High Players (3, 4); Swimming (1, 2); Junior Honor Society (3); Quill and Scroll (3,4); Make-Up (3); Library Monitor (3,4)

They are most powerful who make least noise

MAY KOORY

Student Control (1,4); Girls' Senior Glee Club (2); Girls' Junior Glee Club (1); Central High Players (2,3,4); Junior Honor Society (3); National Thespians (4)

She's a whiz at type and shorthand

MILTON KOPECKY

Register Staff (4); C. O. C. (4); Opera (2); Road Show (1,2,3,4); Regiment (1,2,3,4), First Lieutenant, Band (4); Boys' Rifle Team (4); Orchestra (1,2); Library Monitor (4); Engineers (4)

He says little but thinks much

ELLABELLE KORNEY

Tennis (2,3,4); Baseball (1); Basketball (1); Hockey (1); A Cappella Choir (4); Girls' Senior Glee Club (3); Girls' Junior Glee Club (2); Student Control (2); Latin Club (2); Central Colleens (1); Library Monitor (4); "The College Widow" (3)

Bubbling over with the joy of living

BETTY KRAUS

NATIONAL HONOR SOCIETY

Junior Honor Society (1,3); Central Colleens (1,2); Latin Club (2); Mathematics Society (2); Linger Travel Club (3,4); Student Control (4); Library Monitor (4); Register Staff (4); O-Book Staff (4); Loquax (2)

Her presence here was valued

CLARK KRELLE

A good fellow to everyone

ESTHER KUEHL

Central Colleens (1, 2, 4); G. A. A. (1,2,3,4), Vice-President (3), President (4); Home Economics Club (2); Baseball (1,2,3,4); Tennis (3, 4); Basketball (1, 2, 3, 4), Captain (3); Hockey (1,2,3); Volleyball (1, 2,3); Girls' Rifle Team (2,3); Library Monitor (4)

Outstanding in athletics and a good friend

ETHELYN KULAKOFSKY

Greenwich Villagers (3,4); Central Colleens (3, 4); Student Control (4); Library Monitor (4)

She talks nice, she acts nice, she is nice





MARGARET KURSAWE

Project Committee (1); Swimming (1); Library Monitor (3)

Who could find a better companion?

VIRGINIA LARSEN

Central Colleens (3,4); Girls' Junior Glee Club (2,3); Girls' Senior Glee Club (4); A Cappella Choir (3,4)

Graceful and tall, pleasant to all



MILDRED LACINA

Junior Honor Society (2); Opera (2,3); A Cappella Choir (3,4); Girls' Junior Glee Club (1); Girls' Senior Glee Club (2); National Music Supervisors' Convention (4); Student Control (4); Swimming (2); Library Monitor (4)

Surrounded by an air of charm and reserve

JEANETTE LAWSON

Baseball (1,2,3,4); Volleyball (1,2,3,4); G.A.A. (2,3,4); Student Control (3,4); Tennis (2,3,4); Captain (4); Basketball (1,2,3,4); Gym Exhibition (1); Hockey (1,2)

Her friends are well-deserved



MARION LAMBERT

Central Committee (2,3,4); Lininger Travel Club (2,3,4); Vice-President (4); Student Control (3); French Play (4)

Her taste in everything is flawless

ADOLPH LAYTIN

Opera (4); A Cappella Choir (2,3,4); Boys' Junior Glee Club (1); Boys' Senior Glee Club (1); National Music Supervisors' Convention (3); State Music Contest (2); Discussion Club (3,4); President (4); Regiment (1,2); Library Monitor (4)

A good-natured, industrious chap



BOB LANGDON

Mathematics Society (3,4); Boys' O-Club (3,4); C. O. C. (4); Road Show (4); Regiment (1,2,3,4); First Lieutenant and Adjutant (4); Golf (3,4); Captain (4); Track (1)

Snappy car and snappy clothes

ESTHER LAZERSON

Le Cercle Francais (2,3,4); French Play (2,4); Central Colleens (1,2,3,4); Student Control (3); G. A. A. (3,4); Baseball (2,3); Swimming (3); Tennis (3); Basketball (3); Hockey (2,3)

A snappy girl with a giggle all her own



BOB LARSEN

Regiment (1,2); Boys' O-Club (3,4); Track (3); Football (3); Orchestra (1,2)

When our Bob comes in Boredom gets it on the chin

JAMES LEFFLER

NATIONAL HONOR SOCIETY

Junior Honor Society (1,2,3); Quill and Scroll (3,4); Register Staff, Sports Editor (3,4); O-Book Staff, Assistant Editor (4); Mathematics Society (4); Football (3); Regiment (1,2,3)

As a sports editor, he's outstanding

LEONARD LEON

NATIONAL HONOR SOCIETY

Junior Honor Society (1,2,3); National Forensic League (2,3,4); Quill and Scroll (4); Register Staff (4); Spanish Paper (2); Regiment (1,2); Debate (1,2,3,4); Library Monitor (4); Los Sabios (1,2,3,4); Vice-President (4); Register Representative (4); Declamatory (3,4); Discussion Club (1,2); Vice-President (2)

*Leonard is a very fine lad
As a debater, he isn't bad*

JOE LERNER

Regiment (1,2,3,4), Second Lieutenant (4); C.O.C. (4); Library Monitor (4); Los Sabios (2,3,4); Forensic Society (2); Declamatory (2,3)

*Conscientious and striving to please
all*

MARY FRANCES LEWIS

Le Cercle Francais (3,4), Treasurer (3,4); French Play (4); Costume Manager; Road Show (4); Library Monitor (4)

*A personality hard to surpass
A smiling, happy, little lass*

DAVE LIVERMORE

Regiment (1,2,3,4), Lieutenant-Colonel (4); C.O.C. (4); Engineers (4); Crack Squad (3); Central Committee (2); Atlas Club (1,2); Speakers' Bureau (1); Biology Round Table (2); Road Show (3,4); Swimming (1); Golf (2); Wrestling (4); Basketball (1,2); Football (1)

*Happy-go-lucky wherever he goes
He still can be serious, everyone
knows*

DORIS LONERGAN

Girls' Senior Glee Club (3); Girls' Junior Glee Club (1); Opera (3); Central Colleens (2); Speakers' Bureau (4); Central High Players (4)

Her blonde hair shines like her eyes

ALBERT LUSTGARTEN

Boys' Junior Glee Club (1); Boys' Senior Glee Club (1); Speakers' Bureau (2); Boys' O-Club (1,2,3); Tennis (1); Wrestling (1,2); Cheerleader (1,2); Opera (1); Road Show (1,2,3); Orchestra (1,2,3,4); Debate (1,2,3); A Cappella Choir (2,3,4)

*He can talk day in and talk day out
But he doesn't care what he's talking
about*

MARILYE MacDOUGAL

Lininger Travel Club (3,4); Road Show (4); French Play (4); Central Committee (4); Central Colleens (4); Latin Club (2); Speakers' Bureau (3)

*The secret of her popularity is her
winning personality*

RICHARD MacDUFF

Regiment (1,2,3,4), Second Lieutenant and Staff (4); Tennis (3); Road Show (1,2,3,4); C.O.C. (4); Mathematics Society (4)

*Dick doesn't say much. He doesn't
need to*

SYLVIA MACH

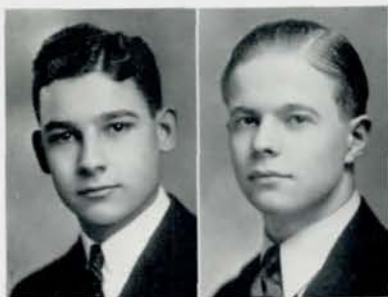
Los Sabios (2,3); Library Monitor (4)

*A charming girl is Sylvia Mach
At everything she has a knack*

HENRY MALASHOCK

Very jolly and mischievous





LLOYD MALASHOCK

Library Monitor (4)

A friend to all is Lloyd

CONRAD MASTERS

Student Control (4); Boys' Senior Glee Club (2,3); Boys' Junior Glee Club (1,2); Speakers' Bureau (2,3); Boys' O-Club (4); Opera (2,3); Road Show (3,4); Swimming (1); Tennis (4); Wrestling (3,4); Track (2); Football (2,3); Athletic Manager (1,4); A Cappella Choir (2,3)

An all-around fellow and a loyal Centralite



PAULINE C. MARGOLIN

Girls' Junior Glee Club (1,2); Girls' Senior Glee Club (2)

A girl who has gained and who will continue to gain everyone as her friend

BETTY JANE MAY

Student Control (4); Girls' Junior Glee Club (1,3); Latin Club (2,3); Library Monitor (4)

Quiet dignity has she



PHIL MALKIN

Student Control (2); Latin Club (3); French Play (2); Library Monitor (4); Discussion Club (4)

He finds his purpose and carries it out

TIMMY McCAFFREY

Girls' Junior Glee Club (1,2); French Play (2)

A delicate and charming lass



LAURA MARSH

Quill and Scroll (4); O-Book Staff (4); Register Staff (4); Library Monitor (4)

She has real ability with dependability and willingness to work

RAWSON McCOTTER

Road Show (3,4); Regiment (1,2); Baseball (3); Track (4); Basketball (2,4); Football (1,3); Library Monitor (4)

He's as likable as he is tall And a star at basketball



JIMMIE MARTIN

Road Show (4); Regiment (4); French Play (4)

He accomplishes things

JANE McCLURE

NATIONAL HONOR SOCIETY

Junior Honor Society (3); Girls' Natural Science Club (2); Girls' Junior Glee Club (3); A Cappella Choir (3,4); Opera (4); Central Committee (2,3,4); Lininger Travel Club (3,4); Library Monitor (4); Latin Club (2); Road Show (3)

As peppy and jolly a girl as ever was

HARRY McDUFF

Regiment (1, 2, 3, 4), Second Lieutenant and Quartermaster (4); C. O.C. (4); Road Show (4); Speakers' Bureau (4); Library Monitor (4); Mathematics Society (3,4)

Seldom heard, but listened to when he speaks

PHILIP MELCHER

Regiment (1, 2, 3, 4), Second Lieutenant (4); Track (1, 2, 3, 4); Basketball (1,2,3); Football (1,2,3); C. O.C. (4); Road Show (4); Spanish Paper (2); Student Control (4); Los Sabios (1,2,3,4)

A true Centralite and a most able boy



GENE MICKEL

Regiment (2,3); Speakers' Bureau (3,4); Road Show (4)

A pay caballero of sweet tenor fame His singing has certainly made him a name



AGNES McELLIGOTT

Central loses a lovely girl

JACK McEVENY

Los Sabios (2); Library Monitor (4)

Courteous to all and unpleasant to none

JEROME MILDER

Regiment (1, 2, 3, 4), Second Lieutenant (4); C.O.C. (4); Speakers' Bureau (1,2); Track (1,2,3,4); Basketball (2,3); Library Monitor (4); Road Show (3)

Quick to learn, in for fun, that's Jerry



FRANCES McGRANE

Lining Travel Club (4); Monitors' Council (4); Student Control (2,3,4); Girls' Senior Glee Club (3, 4); Girls' Junior Glee Club (2); Stage Crew (4)

A model of pep and cheer

JULIAN MILDER

Regiment (1); Speakers' Bureau (3, 4); Road Show (3); Athletic Manager (4)

Jokester extraordinary... 'nuf said!



ROBERT McINTYRE

Regiment (1, 2, 3, 4), Second Lieutenant (4); C. O. C. (4); Central Committee (3,4); Library Monitor (4)

He keeps Wrigley's business going

DANIEL M. MILLER

Regiment (1, 2, 3, 4), Captain and Commissary (4); C.O.C. (4); Engineers (3, 4); O-Book Staff (4); Auditor; Register Staff (3,4); Circulation Manager (3); Business Manager (4); Forensic Society (2); Atlas Club (1); Boys' Senior Glee Club (2,3); Boys' Junior Glee Club (2); Latin Club (2); Opera (3); Quill and Scroll (3,4); Discussion Club (3,4)

There's honesty and good friendship in him





JIM MOISE

Project Committee (1); Regiment (1,2); Boys' Junior Glee Club (3); Latin Club (3); Opera (4); A Cappella Choir (4)

He can always be depended upon

FLORENCE MOSHER

Central Colleens (1,2,3,4); Los Sabios (3,4); Central High Players (3,4); Spanish Play (3); Debates (3); Library Monitor (4); Speakers' Bureau (4)

*She's known for her gift of gab
When she's around no day is drab*



BOB MOODY

NATIONAL HONOR SOCIETY

Junior Honor Society (3); National Athletic Honor Society (4); Mathematics Society (4); Boys' O-Club (3,4); Basketball (1,2,4); Football (1,2,3,4); Baseball (3,4)

Everyone knew him — he played football

MARIELLA MOSSMAN

Girls' Junior Glee Club (1); Girls' Senior Glee Club (2); Boosters' Club (1); Central High Players (3); Opera (3); Dramatics (3); A Cappella Choir (2,3,4); Costumes (4); Library Monitor (4); National Music Supervisors' Convention (3); Swimming (4)

A charming and delightful blonde



CHARLOTTE MOORE

Orchestra (3,4); Student Control (4)

Charlotte is always smiling and ready for fun

BUELL NAUGHTIN

O-Book Staff, Associate Editor (4); Register Staff, Circulation Manager (4); Road Show (4); Regiment (1,2); Central Committee (4)

*First get the work, then time for play;
That has always been his way*



BOB MOOSE

Regiment (1,2,3,4), First Lieutenant (4); C.O.C. (4); Speakers' Bureau (3,4); Central Committee (4); Library Monitor (4); Golf (2,3,4); Crack Squad (3); Road Show (3,4)

Bob has personality and capacity for success

BEVERLY NEBLE

Library Monitor (4); Make-Up (4)

A true Centralite and a most able girl



REBEKAH MORSE

Los Sabios (2,3); Central Colleens (1); Girls' Senior Glee Club (2); Girls' Junior Glee Club (1); Central High Players (3); Opera (2,3,4); Road Show (2,3,4); Spanish Play (2); Junior Honor Society (1); National Music Supervisors' Convention (3); A Cappella Choir (2,3,4); Library Monitor (4)

*"Becky" acts and dances, too
Can she sing? I'm asking you*

LAVERNE NELSON

A demonstrator of friendship

MYRLE NEWBRANCH

Junior Honor Society (2); Central Colleens (1); Lininger Travel Club (3); Le Cercle Francais (4); Road Show (4); French Play (4); Library Monitor (4)

A sweet brunette with a ready smile

KENNETH NEWMAN

Road Show (3); Library Monitor (4); Baseball (1,2); Football (1,2)

A fellow who knows how to do things and does them

GLADYS NIELSEN

Greenwich Villagers (4); Art Contest (4); Home Economics Club (2,3,4)

Gracious, pretty, and sweet . . . no wonder we all like Gladys

ROBERT NIMMO

NATIONAL HONOR SOCIETY

Regiment (1, 2, 3, 4), Second Lieutenant and Quartermaster (4); C. O. C. (4); O-Book Staff (4); Register Staff (4); Junior Honor Society (2,3); Los Sabios (2,3); Speakers' Bureau (2); Central High Players (3,4); Road Show (4); Spanish Play (2); Dramatics (1, 2, 3, 4); Wrestling (1); Football (1); Debate (2); Library Monitor (4)

A "merry" heart — enjoy life is his motto

MARGERY NOE

Register Staff (3,4); O-Book Staff (4); Central Colleens (1,2,3,4), Secretary (4); Student Control (2, 3, 4); G.A.A. (2,3,4); Swimming (2, 3); Library Monitor (4)

Jolly, peppy and always ready for a good time

SEBASTIAN NOBLE

Regiment (1); Library Monitor (4); Student Control (4); Los Sabios (2, 3,4); Register Representative (3)

As noble as his name

BETTY NOLAN

Junior Honor Society (3); Golf, Captain (1,2,3); Basketball (1,2,3); Baseball (1,2,3,4); Titans (1,2,3, 4); Lininger Travel Club (1); Central Colleens (1, 2, 3, 4), President (4); Student Control (1,2,3,4); G. A.A. (1,2,3,4), President (2,3); Library Monitor (2,3); Costumes (3); "Miss Central" (4)

A wizard on the golf course and suits us to a "tee"

ROSE MARIE NOSAL

Student Control (2,3)

She will always have friends eager to help her in anything she does

BILL O'BRIEN

Quill and Scroll (3); Register Staff (3,4); Monitors' Council (4); C.O. C. (4); Regiment (1, 2, 3, 4), First Lieutenant (4); Crack Squad (3); Basketball (3); Library Monitor (4); Engineers (4)

A splendid advertising manager with a capacity for fun

PHIL O'HANLON

Boys' Senior Glee Club (2); Boys' Junior Glee Club (2); Boys' O-Club (3,4); Baseball (2,3); Football (1,2,4)

Behind that quiet manner is an earnest determination





LOUISE ODDO

Student Control (4); Le Cercle Francais (2,3,4); Road Show (4); Swimming (1).

A fortunate girl to have for a friend



BETTY RUTH OLIVER

Swimming (3,4); Central Colleens (4); Road Show (3)

Always ready to lend a helping hand



VIRGINETTE OLSON

NATIONAL HONOR SOCIETY

Junior Honor Society (2,3); Register Staff (4); Quill and Scroll (4); Central High Players (3,4); Library Monitor (4); Monitors' Council (4); Central Colleens (4); Road Show (4); French Play (2); Senior Play (4)

*A willing student and a quiet worker
... all signs point to success*



ANNE ORTMAN

Her affability is most amazing



PEARL OSOFF

NATIONAL HONOR SOCIETY

Quill and Scroll (4); Junior Honor Society (2,3); O-Book Staff (4); Register Staff (4); Der Deutsche Verein, Vice-President (1,2); Lininger Travel Club (3,4); Central Colleens (1,2,3,4); Student Control (2,4); Le Cercle Francais (4); French Play (4); Library Monitor (4)

A demure lassie with a winning way

MARGARET PARKS

Girls' Junior Glee Club (2); G.A.A. (1,2,3,4); Central High Players (2,3); Road Show (2,3); Baseball (2,3,4); Basketball (2,3,4); Volleyball (2,3,4); Girls' Rifle Team (3,4); Make-Up (4); Orchestra (1,2,3)

Impulsive and gay

IRMA MAY PEAKE

Girls' Junior Glee Club (3); Girls' Senior Glee Club (4); Central Colleens (1); G. A. A. (1); Library Monitor (4); Titians (1,2,3,4); Swimming (2)

A sweet maid who forgets not the simplest duty

MARJORIE PEDERSEN

Central Colleens (4); Girls' Senior Glee Club (4); Girls' Junior Glee Club (3)

Her friendship was a lovely thing to have

RICHARD PEHLE

Golf (2,3)

Carefree and determined to enjoy life—that's Dick

GERALDINE PETTY

NATIONAL HONOR SOCIETY

Quill and Scroll (4); Junior Honor Society (1,2,3); O-Book Staff (4); Register Staff (4); Mathematics Society (2); Lininger Travel Club (3,4); Central Colleens (3,4); Student Control (4); Library Monitor (4)

Her ambition and perseverance will lead her on to success

BETTY POLLARD

G.A.A. (1); Student Control (3); Girls' Senior Glee Club (2); Girls' Junior Glee Club (1,2); Opera (3); Hockey (1); National Music Supervisors' Convention (3); A Cappella Choir (4)

Eager, earnest, a student

BARBARA RHETMEYER

Greenwich Villagers (3,4), Vice-President (4); Student Control (3,4); Girls' Natural Science Club (2); Secretary (2); Road Show (4); Library Monitor (4)

Bubbling over with humor and fun



DONALD POLLARD

Regiment (1,2,3); Track (2); Los Sabios (2); Mathematics Society (2); Stage Crew (2)

A dignified, quiet boy

BOB REICHSTADT

Football (3,4); Wrestling (2,3,4); Boys' O-Club (3,4); Gym Club (3,4); Basketball (1)

Easy come, easy go



MARY ANNE POUND

Library Monitor (4)

She's worth her weight in gold

DONALD REISSER

Opera (3); Road Show (4); National Music Supervisors' Convention (3); State Music Contest (4); Library Monitor (4); A Cappella Choir (3,4)

Every inch of him a good fellow



GUS PULOS

Boys' O-Club (3); Track (3)

He's a fellow no one will ever forget

GRACE RESNICK

Register Staff (4); Library Monitor (4); Lininger Travel Club (3); Central Colleens (3,4); Student Control (4); Home Economics Club (4)

Democratic and dependable



NELLIE QUATTROCHI

Girls' Senior Glee Club (2); Girls' Junior Glee Club (1); Central High Players (2,3)

A jolly, fine girl

DON REYNOLDS

Boys' Junior Glee Club (1); Boys' Senior Glee Club (2); Opera (2,3,4); Debate (3,4); A Cappella Choir (3,4); Library Monitor (4); C.O. C. (4); Regiment (1,2,3,4), Second Lieutenant (4)

A shy, retiring spirit, yet holding his own





ELINOR REYNOLDS

NATIONAL HONOR SOCIETY

Quill and Scroll (4); O-Book Staff (4); Register Staff (4); Loquax (2); Central Committee (2,3,4); Lininger Travel Club (3); Central Colleens (1); Le Cercle Francais (4); Latin Club (1,2); French Play (4); Junior Honor Society (1,2,3); Library Monitor (4)

She has grace and poise and how she can handle a line

JOHN ROGERS

Baseball (3,4); Wrestling (1,2,3,4); Boys' O-Club (1,2,3,4); Speakers' Bureau (2,3,4); Declamatory (3,4); Debate (4); Forensic Society (4)

He is well known for his athletic ability



JACQUELINE REYNOLDS

Central Colleens (1,2,3,4), Sergeant-at-Arms (4); G.A.A. (1,2,3), Sergeant-at-Arms (3); Baseball (2); Basketball (1,2,3); Girls' Rifle Team (2,3); Library Monitor (4)

Laughing eyes, merry spirit, loved by all

MERRILL ROHRBOUGH

NATIONAL HONOR SOCIETY

Regiment (1,2,3,4), Captain (4); Engineers (3,4); Crack Squad (2,3,4), Director (4); Junior Honor Society (1,3); Loquax (2,3); Mathematics Society (3,4), President (4); Monitors' Council (4); C.O.C. (4); Boys' Rifle Team (1,2,3,4); Library Monitor (4); Road Show (2,3)

A fellow who strives in every way To do his best in work and play



WALTER RHODES

NATIONAL HONOR SOCIETY

National Athletic Honor Society (4); A Cappella Choir (4); Track (3,4); Boys' O-Club (3,4); Student Control (4); Boys' Junior Glee Club (3)

A good fellow to everyone

FRED ROSENBERG

Regiment (1,2); Band (1,2); Football (1); Discussion Club (3); Library Monitor (4)

An honest and capable man who will earn a name for himself



GEORGE RICH

Boys' Junior Glee Club (3,4); Regiment (1,2); Football (2)

A good sport and a fine fellow

THOMAS ROSS

When he's your friend you can't go wrong



BILL RICHEY

Register Staff (3,4); Spanish Paper (2); Los Sabios (3); French Play (2,4); Regiment (1,2)

Where there's fun, there's also Bill

WALTER ROWLEY

Regiment (1,2,3,4), Captain (4); C.O.C. (4); Engineers (4); Register Staff (3); Boys' Senior Glee Club (2); Boys' Junior Glee Club (1); Opera (1,2,3,4); Road Show (1,2,3,4); Orchestra (1,2,3,4), Vice-President (4); Library Monitor (4)

A brilliant artist who can express his talent in cartoons

CLAIRE RUBENDALL

NATIONAL HONOR SOCIETY

Central Committee (2,3,4); Lininger Travel Club (3); Central Colleens (1); Girls' Junior Glee Club (1); Le Cercle Francais (3,4); Latin Club (1,2); Road Show (2,3,4); French Play (4); Dramatics (4); Junior Honor Society (2,3); Library Monitor (4)

*Pretty hair and shining eyes
Full of mischief, she's a prize*

JOSEPHINE RUBNITZ

NATIONAL HONOR SOCIETY

O-Book Staff (4); Register Staff (4); Loquax (2); Associate Editor (3); Editor-in-Chief (4); Mathematics Society (2); Central Colleens (1,2,3,4); Treasurer (4); Student Control (3,4); Latin Club (2,3,4); Junior Honor Society (3); Quill and Scroll (4); Library Monitor (4); French Play (4); National Winner Quill and Scroll News Contest (4)

*Obliging in many a way
She'll make good some day*

SAM RUMA

Gym Club (4); Track (3); Football (2,3)

*One to be remembered for his
cheery smile*

THOMAS RUMA

Student Control (4); Gym Club (1,2,3,4); Road Show (2); Regiment (1); Football (1,2); Orchestra (2,3)

A man of worth

GWENDOLYN SACHS

NATIONAL HONOR SOCIETY

Loquax (3,4); Central Committee (4); Le Cercle Francais (3,4); Secretary (4); Road Show (4); French Play (4); Library Monitor (4)

Sleekness and sophistication

GENEVIEVE SCALZO

Road Show (3,4); Girls' Junior Glee Club (3,4); Spanish Play (3)

*Her dancing ability is a feature of
every Road Show*

RUTH SCHNEIDER

Girls' Senior Glee Club (3); Girls' Junior Glee Club (2)

Tasteful and tactful

JAMES SCHWARTZ

Boys' Junior Glee Club (3); Gym Club (3,4)

*Rosy cheeks and an intelligent
smile*

EVANGELINE SEALEY

Student Control (3,4)

*Modest, happy, and dignified all
the while*

GEORGE SEEMANN

Regiment (1,2,3,4); First Lieutenant and Adjutant (4); Football (1,2,3,4); Track (3,4); Wrestling (3,4); Basketball (1,2); Swimming (1,2); Boys' O-Club (2,3,4); C.O.C. (4); Home Room Sergeant-at-Arms (4); Gym Club (1,2,3,4)

*Strong, handsome, and indifferent
... the despair of all the ladies*





LOUIS SEMINARA

NATIONAL HONOR SOCIETY

Register Staff (3,4), Make-Up Editor (4); Quill and Scroll (3,4); O-Book Staff (4); Loquax, Make-Up Editor (4); Regiment (1,2); Forensic Society (2); Latin Club (2); Discussion Club (3,4), Sergeant-at-Arms (3), Secretary (4); Library Monitor (3,4); Business Manager, "Daddies" (4); Register Representative (4)

A little body often harbors a great character



HENRIETTA SESSEL

Central Colleens (2); Latin Club (2); Lininger Travel Club (3); Le Cercle Francais (4); Library Monitor (4)

*Her manner is charming and sweet
With a sense of humor that can't be beat*



BERNICE SEXSON

Central Committee (3); Student Control (4); Girls' Junior Glee Club (2); G.A.A. (1); Swimming (1,2,4); Library Monitor (4)

*Laughing eyes, winning smile
A pretty girl with lots of style*



GEORGE SHAFER

Regiment (1,2,3); Wrestling (3,4); Track (2,3); Student Control (2); Discussion Club (3,4), Secretary (4)

Men with but few words are the best men



JAMES SHERMAN

Regiment (1,2); Road Show (2,3,4); Orchestra (1,2); Library Monitor (4)

His studious appearance is certainly deceiving

GRACE SHESTAK

Student Control (4)

A chum of sterling worth

CAROLYN SKANS

Road Show (3,4); Home Economics Club (3,4)

*Her attractions are her good nature,
sunny disposition, and sincerity*

STANLEY SLOSBURG

Regiment (1,2,3,4), Second Lieutenant (4); Gentlemen's French Club (3,4), Treasurer (4); C.O.C. (4); Wrestling (1); Senior Play (4); Register Staff (4), Assistant Advertising Manager; O-Book Staff (4); Latin Club (2); Library Monitor (4); First Place Student Association Ticket Sale (3,4); Tennis (1)

So jolly—and what a go-getter!

ROSELLE SMEAD

Student Control (3); Girls' Junior Glee Club (1); Central Colleens (1,2); Make-Up (3); Tennis (2); Home Economics Club (3,4)

A pretty, delightful brunette

DAVID SMITH

NATIONAL HONOR SOCIETY

Regiment (1,2); Gentlemen's French Club (1,2,3,4), Secretary (4); French Play (1,2,4); Library Monitor (4)

Nothing succeeds like success

ED SMITH

Register Staff (4); Circulation Manager (4); Junior Honor Society (1); Library Monitor (4)

A steadfast student

ALETHA SPECK

A Cappella Choir (3,4); Student Control (2,3); Girls' Senior Glee Club (2); Girls' Junior Glee Club (1); Library Monitor (3)

An intelligent and clever girl

ELIZABETH SMITH

NATIONAL HONOR SOCIETY

Junior Honor Society (2); Quill and Scroll (4); Library Monitor (4); Central Colleens (1,2,3,4); Vice-President (4); Student Control (3); Register Staff (4); Central High Players (3,4); Lininger Travel Club (4)

Capable, likable and lots of fun

VIVIAN SRB

Girls' Junior Glee Club (3); Swimming (4)

You will find a friend wherever you choose to fare

FRED SMITH

Regiment (1,2,3,4), Second Lieutenant (4); Crack Squad (2,3); C.O. C. (4); Road Show (1,2,3,4); French Play (2,4); Gentlemen's French Club (2,3,4); Orchestra (1,2,3,4); Central High Players (1)

A fine musician—a person of deeds, not words

ADELINE STIBRAL

Blessed with that charm, that certainty to please

KATHERINE SMITH

A Cappella Choir (2,3,4); Opera (3,4); Road Show (4); Girls' Senior Glee Club (2); Girls' Junior Glee Club (1); Los Sabios (2,3)

She will always have friends eager to help her in anything she does

KATHERINE STONE

Debate (2,3,4); Declamatory Contest (2,3,4); Forensic Society (2,3,4); Secretary (3); Vice-President (4); Discussion Club (2,3); Secretary (3); Central High Players (3,4); Tennis (3,4); Speakers' Bureau (4); Library Monitor (4); Monitors' Council (4)

Quiet, unobtrusive, yet she is a convincing debater

BEATRICE SOMMER

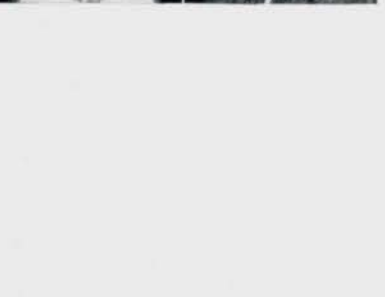
Central Colleens (1,2); Der Deutsche Verein (2,3); Lininger Travel Club (3,4); Girls' Junior Glee Club (3); Girls' Natural Science Club (2); Library Monitor (4)

*Busy as a little "Bee"
Full of fun and jollity*

RUTH STREETER

Central Colleens (3,4); Girls' Junior Glee Club (3); Girls' Senior Glee Club (3); G.A.A. (3); Student Control (4); Swimming (3); A Cappella Choir (4)

A girl well-known in school activities





JACK SULLIVAN

Regiment (1); Speakers' Bureau (3, 4); Declamatory (4); Debate (3,4); Swimming (1)

His work in the public speaking department is enough to make him speak for himself

MAURICE TATELMAN

NATIONAL HONOR SOCIETY

Junior Honor Society (2,3); Quill and Scroll (3,4); Register Staff (3, 4); Regiment (1,2,3,4); Gentlemen's French Club (2,3); Boys' Junior Glee Club (2); Boys' Senior Glee Club (3); Road Show (1,2,3,4); Opera (3); French Play (2); A Cappella Choir (3,4); Orchestra (4); National Music Supervisors' Convention (4)

A man of uncommon talents.



MARVIN SULLIVAN

National Forensic League (4); Debate (3,4); Speakers' Bureau (3); Central High Players (3); Declamatory (4); Dramatics (4); National Thespians (3,4); Wrestling (3)

Quiet, thoughtful ways, but likable, nevertheless

JEANNE TAYLOR

NATIONAL HONOR SOCIETY

Junior Honor Society (3); National Thespians (4), President; Central High Players (3,4); Road Show (4); Dramatics (3,4); Student Control (3); Library Monitor (4)

A fine actress, a willing worker, and an everlasting friend



MARY LOUISE SULLIVAN

Register Staff (4); O-Book Staff (4); Central Committee (2,3,4); Speakers' Bureau (3,4); Swimming (1,3); Costumes (4); Senior Play (4); Library Monitor (4)

*Writing is her recreation
Some day it may be her occupation*

NORMA TAYLOR

NATIONAL HONOR SOCIETY

Mathematics Society (2,3); Lininger Travel Club (4); Central Colleens (1,2,3); Student Control (1, 2,3,4); Latin Club (2); French Play (4); Junior Honor Society (1,2,3); Library Monitor (4)

Norma is individual, original, and an "A" student



VIRGINIA TARRY

Central Committee (4); Girls' Senior Glee Club (4); Girls' Junior Glee Club (2); Le Cercle Francais (3,4); Opera (4); French Play (4); Library Monitor (4); A Cappella Choir (4); Senior Play (4)

*What a talker! Oh, my gracious!
With a laugh that's really spacious*

LYNN THOMPSON

Los Sabios (3,4); Mathematics Society (2,3,4); Atlas Club (1,2,3); Speakers' Bureau (4); Library Monitor (4)

To be of service rather than to be conspicuous is his aim



BOB TATE

Boys' Senior Glee Club (2); Student Control (4); Regiment (1,2); Basketball (3); Library Monitor (4)

Bob's persevering steadfastness will overcome any obstacle

EVELYN THOMAS

Girls' Junior Glee Club (2); Girls' Senior Glee Club (3); Opera (3); Central High Players (4); Dramatics (2); Swimming (1); Make-Up (3); Library Monitor (4)

A stunning girl with a quiet charm

LYSTRA THOMSEN

Central Colleens (2,3,4); Central High Players (2,3,4); Opera (4); Road Show (3); Senior Play (3); Dramatics (4); Spanish Play (3); National Thespians (4); Girls' Junior Glee Club (2); Make-Up (3); Library Monitor (4)

She has a friendly smile for all she meets

PAUL TRAUB

Regiment (1,2,3,4); Second Lieutenant (4); A Cappella Choir (2,3,4); C. O. C. (4); Opera (3,4); Road Show (4); National Music Supervisors' Convention (3); Boys' Junior Glee Club (1); Mathematics Society (2,3,4); Secretary (3); Treasurer (4); Loquax (4)

The only way to have a friend is to be one

NELLIE TRIBULATO

Student Control (2,3,4); Latin Club (2); Swimming (2,4); Library Monitor (4); Home Economics Club (4)

A diligent worker

ERNEST TULLIS

Regiment (1); O-Book Staff (4); Central High Players (3,4); Treasurer (4); Road Show (3,4); Dramatics (3,4); Opera (4); National Thespians (4); Vice-President (4); A Cappella Choir (4); Forensic Society (1)

He excels in dramatics and then some

MARY ELIZABETH TUNISON

NATIONAL HONOR SOCIETY

Junior Honor Society (1,2,3); Linger Travel Club (2,3,4); Sergeant-at-Arms (4); Central Committee (3,4); Road Show (3,4); Loquax (3); Latin Club (2); French Play (4); Library Monitor (4)

Dignified, gracious, with the right amount of humor to make her loving

MARJORIE UNDERWOOD

Junior Honor Society (1,2,3); Library Monitor (3,4)

A quiet, studious scholar

SAM VENEZIANO

Gym Club (1,2); Track (3,4,5); Basketball (2); Football (2,3,4)

His dancing feet are his fortune

MARY VOGEL

Junior Honor Society (1,2,3); Central Colleens (1,2,3,4); Mathematics Society (2,3,4); Secretary (4); Girls' Junior Glee Club (1); Titians (2); G.A.A. (1,2); Costumes (3); Library Monitor (4)

Friendliness, simplicity and sincerity are a pleasing combination

ART VUYLSTEK

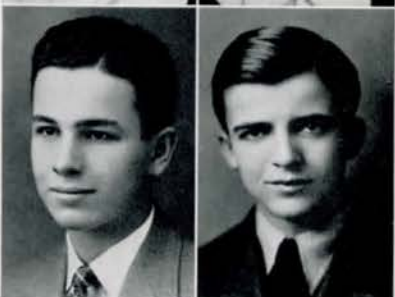
Boys' O-Club (1,2,3,4); Wrestling (1,2,3,4); Baseball (1,2); Swimming (1); Regiment (1,2); Gentlemen's French Club (3); Student Control (4); Road Show (3,4)

For his prowess on the mat Central's team does tip its hat

RAY VUYLSTEK

Regiment (1,2); Boys' O-Club (4); Athletic Manager, Wrestling (3,4); Library Monitor (4)

A man of affairs, always doing something





MIKE WALSH

Regiment (1,2,3,4), Second Lieutenant (4); C.O.C. (4)

Sincerity is a quality of worth

RICHARD WILLIS

Says little, but accomplishes much



BOB WAUGH

Regiment (1,2,3); Student Control (4); Golf (3)

He can wield a mean mashie

ED WIGGINS

National Athletic Honor Society (3, 4); Boys' O-Club (2, 3, 4); Boys' Junior Glee Club (3); Track (2, 3, 4); Regiment (1, 2)

*A dusky flash is our boy, Ed,
He always breaks the tape ahead*



MERRIAN WIESMAN

Student Control (4); Central Colleens (4); G.A.A. (2); Make-Up (2); Baseball (2); Home Economics Club (4); Volleyball (2)

Her merry ways make us all adore her

HELEN WILKES

Girls' Senior Glee Club (4)

A delightful girl to all who know her



ROLAND WHITE

Football (3)

A right good fellow

JEAN WINGET

Girls' Junior Glee Club (1,2); Girls' Senior Glee Club (2, 3); Central Colleens (2,4); Le Cercle Francais (4); Road Show (4); A Cappella Choir (3,4)

Sweet bit of femininity



WALT WIGHTMAN

Regiment (1,2,3,4), Second Lieutenant (4); Boys' Junior Glee Club (1, 2); Student Control (4); C. O. C. (4); French Play (2,3)

Though small in stature, he is gifted with ability

VIRGINIA WINGET

Junior Honor Society (3); Girls' Junior Glee Club (2); Titans (1, 2, 3, 4); Girls' Senior Glee Club (3); Central Colleens (3,4); Central High Players (2,4); "College Widow" (2); Opera (2); Road Show (4); Library Monitor (3,4); A Cappella Choir (3,4)

She has high ideals with the ability to attain them

BILL WILLIAMS

NATIONAL HONOR SOCIETY

Junior Honor Society (2,3); Quill and Scroll (4); Student Control (2,3,4); Library Monitor (3,4); Latin Club (1,2,3); Loquax (2,3,4)

Deliberate, efficient, and always ready to help

LILY MAE WOLFSON

G.A.A. (1,2,3); Girls' Junior Glee Club (2); Home Economics Club (4); Baseball (1,2); Hockey (1,2,3); Basketball (1,2,3)

A fine worker in all she does



KEN WILSON

Regiment (1,2,3); Football (1,2); Boys' Junior Glee Club (1); Boys' Senior Glee Club (2); A Cappella Choir (3,4); Opera (2,3,4)

A friend whose presence will be missed

ROSE MARIE WOLFSON

G.A.A. (1,2,3); Girls' Junior Glee Club (2); Home Economics Club (4); Baseball (2); Basketball (2); Hockey (1,2); Volleyball (1,2)

Her good nature and cheerfulness mark her out



ERNEST B. WINTROUB

Forensic Society (1,2,3,4); Treasurer (2); President (3); Debate Team (1,2,3,4); Regiment (1,2); Tennis (3,4); Wrestling (3,4); Cheerleader (3,4), Captain (4)

*A debater of might
Who's always right*

SAMMY WOLK

Boys' Junior Glee Club (1,2); Boys' Senior Glee Club (3); Wrestling (1,2,3); A Cappella Choir (4); Football (1)

He can always be depended upon



CARL WOLFE

Opera (1); A Cappella Choir (2,3); Boys' Senior Glee Club (1); Boys' Junior Glee Club (1)

He's happy-go-lucky in both work and play

BILL WOOD

Boys' Junior Glee Club (1); Boys' Senior Glee Club (2); Speakers' Bureau (2); Regiment (1,2,3,4), Second Lieutenant (4)

His dark and expressive eyes have set many a feminine heart aflutter



WALTER WOLF

NATIONAL HONOR SOCIETY

Mathematics Society (1,2,3); Student Control (3); Speakers' Bureau (3); Junior Honor Society (1,2,3); Library Monitor (3,4); League of Nations Contest (4)

An honest and capable man who will earn a name for himself

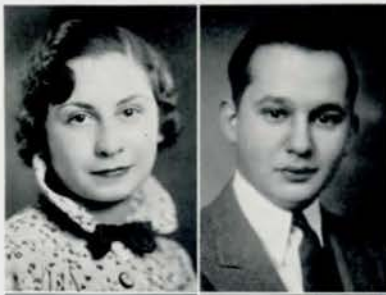
LOUISE WOOD

NATIONAL HONOR SOCIETY

Junior Honor Society (1,2,3); Mathematics Society (1,2); Student Control (3,4); Le Cercle Francais (2,3,4); French Play (2,3,4); Library Monitor (4); Golf (2,3)

Louise is a girl who is always true to her word, her work, and her friends





MIN YAFFE

Girls' Junior Glee Club (2); G.A. A. (1,2,3,4); Basketball (1,2,3,4); Baseball (1,3,4); Tennis (3,4); Hockey (1,2); Volleyball (1,2)

Minnie just radiates friendliness and cheer



J. ALBERT YOUNGSTROM

Central High Players (3,4); Latin Club (2,3); Regiment (1,2); Library Monitor (4)

A combination of modesty and industry



RUTH EASTON

Central Colleens (4); G.A.A. (4); Girls' Rifle Team (4); Swimming (3)

A true Centralite and a most able girl

HAROLD ZELINSKY

NATIONAL HONOR SOCIETY

Junior Honor Society (1,2); Quill and Scroll (3,4); Register Staff (3,4); Make-Up Editor (4); O-Book Staff (4); Loquax (4); Make-Up Editor (4); Regiment (1,2); Library Monitor (3,4); Forensic Society (2); Mathematics Society (2); Latin Club (2); Discussion Club (3,4); President (3); Vice-President (4); Assistant Business Manager "Daddies" (4)

Steadily he proceeds; always he succeeds

EDWARD LYNCH

Regiment (1,2)

Edward is always ready to boost Central in everything he does

SENIOR POPULARITY CONTEST... GIRLS

JEAN KELLY
*Ideal Central girl
Most popular*

JANE HART
Most likely to succeed

MARILYE MACDOUGAL
Prettiest

LOUISE WOOD
Best scholar

MARGRE HENNINGSON
Best natured

VIRGINIA AUSTIN
Peppiest

JEANNE TAYLOR
Best actress

MARJORIE HOUSER
Most sophisticated

BETTY NOLAN
Best athlete

MARY PHYLLIS KLOPP
*Best line
Most romantic*

BARBARA REHTMEYER
Best artist

BETH CAMPBELL
Best musician

VIOLET DE VANEY
Best dressed

JEAN SLABAUGH
Best dancer

MARY JANE FRANCE
Best voice

MARY FRANCES LEWIS
Most personality

DOROTHY BALDWIN
Wittiest

JO JANET DODDS
*Sweetest
Smartest looking hair*

RUTH FERER
Most comical

BILLIE CHAMBERS
Most reckless

MARY TUNISON
Most perfect teeth

MARYLOUISE JONES
Most soulful eyes

SENIOR POPULARITY CONTEST... BOYS

BILL CHEEK
*Ideal Central boy
Most popular*

TOM REES
*Most likely to succeed
Best scholar*

BOB LUNDGREN
*Best looking
Best dancer*

LEE KENNARD
*Most happy-go-lucky
Wittiest*

ALBERT LUSTGARTEN
Biggest bluffer

ERNEST TULLIS
Best actor

HERBERT HILDEBRAND
Worst woman hater

GEORGE SEEMANN
*Best athlete
Best physique*

DICK CONOVER
Best line

WALTER ROWLEY
Best artist

MYRON COHEN
Best musician

HARLAN MILDNER
Best dressed

KERMIT HANSEN
Best voice

BOB ROGERS
Most personality

JULIAN BALL
Best caveman

BILL BAVINGER
Best mannered

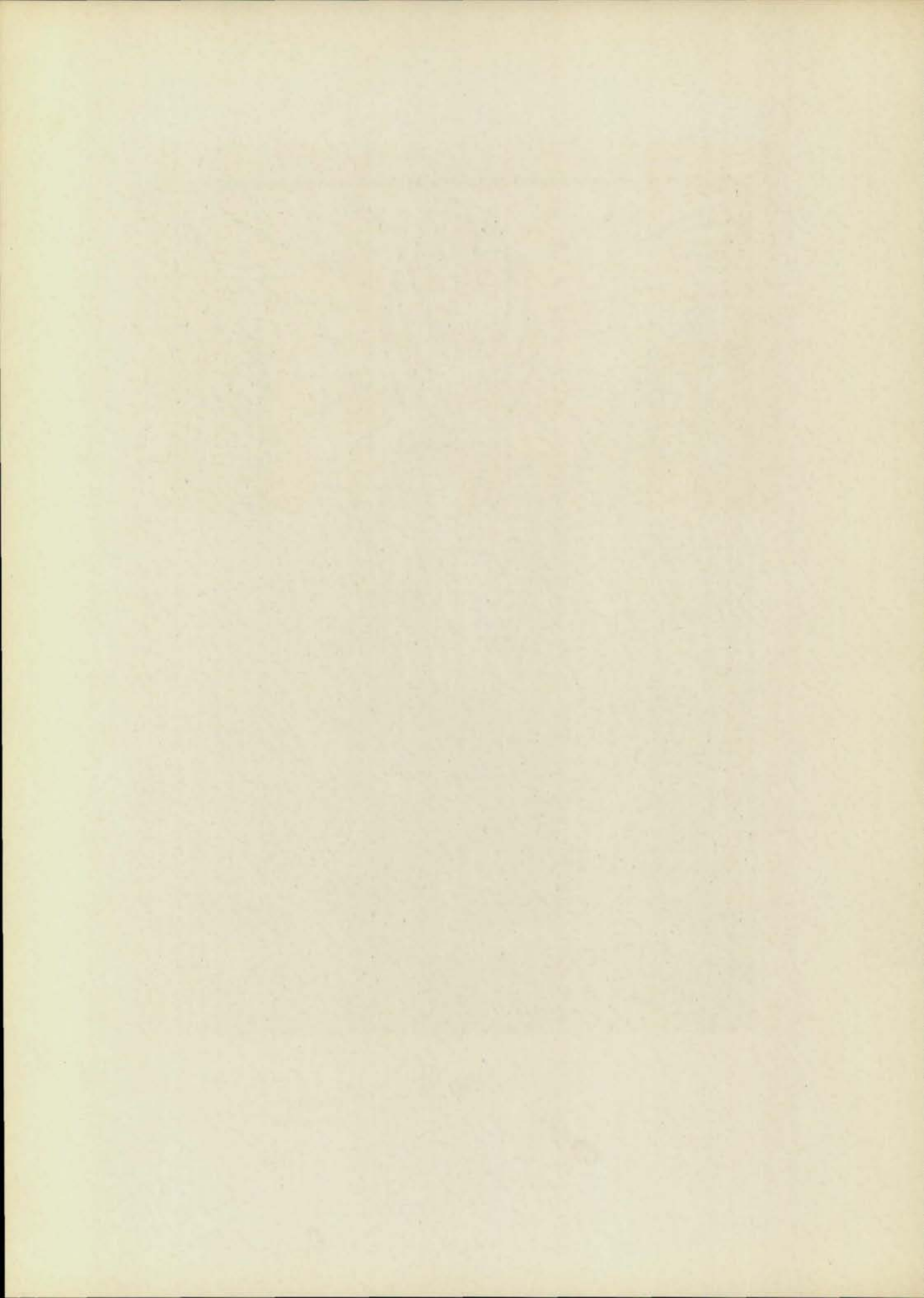
BILL WOOD
Biggest feet

JOE HORNSTEIN
Biggest promoter

JACK ALLGAIER
Man about town



Designed and cut by Mary Ellen Dickerson





NATIONAL HONOR SOCIETY

Rhodes, Hansen, Rohrbough, Lundgren, D. Smith, Ellick, Moody, Rees, Hildebrand
 Williams, Kaplan, Nimmo, Cunningham, Eisenstatt, Leffler, Wolfe, Seminara, Zelinsky, Cohen
 Hindman, Baldwin, Kelly, E. Smith, Dansky, Wood, Gogela, Tatelman, Reynolds, J. Taylor, Rubendall
 Kraus, Rosewater, Olson, Beeson, Rubnitz, Hart, Campbell, Petty, Cotton, Jones, Dodson, Fore
 Goetz, McClure, Allis, Chadwell, N. Taylor, Tunison, Kennedy, Sachs, Klopp, Osoff, Hornstein
 Not in picture — Haines, Leon

NATIONAL HONOR SOCIETY

FFIFTY-FIVE Central seniors were elected to the National Honor society in 1935. These thirty-two girls and twenty-three boys have received the highest honor that Central High school can confer upon any student. From the upper quartile of the senior class in scholastic ranking, these students are selected on the qualities of service, character, and leadership. A faculty committee, composed of the heads of the departments and sponsors of activities, makes the selections under the chairmanship of Principal J. G. Masters.

Membership in the National Honor society represents to the high school scholar what Phi Beta Kappa does to the college student; moreover, Central High school takes a special pride in this organization, since it was founded in 1921 at the suggestion of Principal Masters, who felt that students excelling in high school work and activities should be given recognition. Now a nation-wide honorary fraternity, it has over two thousand chapters throughout the United States. Including the fifty-five students elected this year, 628 seniors have been admitted to membership in the Central High chapter of the society in the fifteen years of its existence.

Principal E. E. McMillan, of North High school, announced the names of Central's fifteenth honor group at an assembly, May 7, in the auditorium. In his speech to the honor students, Mr. McMillan urged them to take their position seriously and accept their responsibility of maintaining the high standards they had set for themselves. "By reading books, studying people, making worthwhile acquaintances, and holding to your ideals," he said, "you will gain the knowledge to figure out your own problems."

To these students Central High school is indebted. Although well represented in distinguished faculty and alumni, the school is known primarily by the caliber of its students from year to year. The outstanding record of these pupils is the basis for Central's continued high scholastic ranking.



JUNIOR HONOR SOCIETY ... GAMMA CHAPTER

Epstein, Hamerstrom, Simon, Wagner, Sabata, Dansky, Wyrick, Field, Peck, Stelzer, Miller, Severinsen
 Burnett, Guenther, Busch, Pohl, Kilbourn, Anderson, J. Smith, Harriss, Ramsey, Eyre, Reynolds, Payne,
 Marsh
 Lipp, Bordy, Friedman, Armstrong, Dolphin, Allen, Eggers, Rosenbaum, Donke, R. Smith, Nourse,
 Speckter, Blumkin
 Frank, Phillips, Tarnoff, A. Taylor, Pepper, Weise, Cornick, Kieser, De Witt, Lewis, Sheehan, Uren, Davis
 Klaiman, Bedell, Pitts, Saxe, Ackerman, Hanst, Schwartz, Strauss, Rivett, Larsen, Baum, Gershter



JUNIOR HONOR SOCIETY ... DELTA CHAPTER

Barker, Friedman, Jorgenson, Baum, Morris, Williams, Morton, Ziegler, Klein, Hanst, McManus
 Kirschenbaum, Bechter, Hearst, Allyn, Soshnick, Seagren, Grimes, Buchanan, Harnett, Pratt, Maxwell,
 Wolfson, Rainey
 Turner, Yeager, Berner, Baird, Bosin, McWilliams, Holmstrom, McCrory, Wilkinson, Knox, Hurtz,
 Levenson, Ensminger
 Poston, Lewisohn, Dyer, Odorisio, Bordy, Castor, Scott, Laytin, McNulty, Purdham, Rosen, Menagh



JUNIOR HONOR SOCIETY... EPSILON CHAPTER

Bunce, McGinnis, Anderson, McTavish, Kopperud, Morris, A. Meyer, Clark, Pratt, Slosburg, Haugh Martin, Peterson, Rinschen, Randall, Rosenblum, Gadden, Paeper, Wenstrand, Stockman, Wear, Bliss, Steinert Goodbinder, Peterson, Ganz, L. Meyer, Ford, Chamberlin, Catlin, Brown, Cockle, Wales, Gershtater Wyrick, Gilinsky, Soiref, Westering, Carson, Noble, Odorisio, Harris, Koory, Malin, Lerner

JUNIOR HONOR SOCIETY

THE GOAL to which all underclassmen aspire! The Junior Honor society exists for three main purposes: recognition of individuality and high achievement in both scholarship and school activities, encouragement of leadership, and development of character. The institution was founded through the efforts of Principal J. G. Masters in 1923 and is sponsored by a committee of fourteen faculty members.

Membership in Junior Honor society is based on scholarship and character; in addition, sophomore and junior members must have displayed qualities of leadership, service, and loyalty to the school. Those elected must have two full credit A's and no grade below B, although those carrying five subjects are permitted one C.

Three chapters compose the organization: Epsilon for freshmen, Delta for sophomores, Gamma for juniors. This year, ten per cent of each class was elected to membership by the general council under the chairmanship of Miss Tillie Anderberry, English teacher. Graduates who have belonged to the Junior Honor society are considered honorary members. At the end of one year, however, active membership ceases.

Announcement of the election was made in the Central High school auditorium on May 2 with Assistant Principal Fred Hill in charge. J. G. Schmidt, physics teacher, announced the Gamma chapter; Miss Amanda Anderson, mathematics instructor, the Delta chapter, and R. B. Bedell, mathematics instructor, the Epsilon chapter.



REGISTER STAFF... FIRST SEMESTER

Richey, Horn, Nimmo, Kaplan, Eisenstatt, Miller, Bolker, Naughtin, O'Brien, Slosburg
 Arbitman, Kraus, Hennings, Rosewater, Olson, Henningson, Rubnitz, Gamerl, Hirsch, Seminara, Zelinsky
 Bauder, De Vaney, Smith, Dansky, Hart, Sullivan, Resnick, Williams, Leon, Leffler

PUBLICATIONS

THE CENTRAL HIGH REGISTER, a weekly publication, has, since its foundation in 1874, won the highest possible honors in recognition of its journalistic merit. The paper is published by the journalism department under the direction of Mrs. Anne Lane Savidge, journalism instructor. All-American honor rating, the highest award conferred by the National Scholastic Press association, and a similar award given by the Columbia Scholastic Press association, have been received for the past five years.

Membership in Quill and Scroll, international honor society for high school journalists, was awarded to thirty-one students this year. The purpose of the organization is to raise the standards of journalism through the development of a high code of ethics in students. To become a member of this organization, one must have the following qualities: outstanding work in journalism, ranking in the upper third of the class, recommendation by the journalism instructor, and approval of the recommendation by Edward Nell, executive secretary. Since the society was founded, in 1926, by a group of teachers at the University of Iowa, it has grown to include six hundred active chapters in the United States with over fifteen thousand members. An official publication, "Quill and Scroll," which is edited quarterly, is received by all members of this society.

The sixth annual Loquax, newspaper of the Latin department, was published again this year as a part of the Register, with its chief editors selected from members of the Register staff. Other members of the staff were chosen by Mrs. Bernice Engle and Mrs. Bessie Rathbun, Latin instructors, from the Latin department.

The O-Book, annual publication of the senior class, was published by a staff composed of members of the Register department, and by editors appointed from the senior class.



REGISTER STAFF... SECOND SEMESTER

Nimmo, Morris, Horn, Smith, Gogela, Sabata, Leffler, Kopecky, O'Brien, Slosburg, Buchanan, Naughtin, Hildebrand, Allgaier, Miller, Eisenstatt, Bolker, Leon, Hamerstrom, Seminara, Zelinsky, Klaiman, Smith, Rosewater, Rosenbaum, Anderson, Henningson, Gamert, Rubnitz, Petty, Hammer, Osoff, Hirsch, Noe, Blumkin, Arbitman, Speckter, Reynolds, Baldwin, Hart, Houser, Sullivan, Schwartz, Dansky, Rivett, Marsh



QUILL AND SCROLL

Williams, Hildebrand, Leffler, Sabata, Eisenstatt, Gogela, Morris, Miller, Seminara, Hamerstrom, Klaiman, Osoff, Smith, Houser, Reynolds, Petty, Chadwell, Hart, Baldwin, Hirsch, Zelinsky, Blumkin, Arbitman, Speckter, Rosewater, Olson, Dansky, Rubnitz, Schwartz, Marsh, Bauder, Cockle, Anderson



MONITORS' COUNCIL

Ellick, Bavinger, Hansen, Rohrbough, Cheek
O'Brien, Hart, Kelly, Olson, Stone



O-BOOK STAFF

Cohen, Slosburg, Kaplan, Tullis, Miller, Masters, Dunn, Sullivan, Hancy, Horn, Nimmo, Cunningham,
Seminara, Naughtin
Chadwell, Hornstein, McClure, Klopp, Sachs, Mach, Dickerson, Elmborg, Arbitman, Hirsch, Eisenstatt,
Rohrbough, Gogela, Hildebrand, Zelinsky
Smith, Bavinger, Hansen, Tunison, Knapp, Hall, Petty, Houser, Reynolds, Goldsmith, Marsh, Bickel, Lewis,
Rehtmeyer, Lefler
Gamerl, Kelly, Henningson, Rubnitz, Hart, Milder, Baldwin, Allgaier, Sullivan, Osoff, Rosewater, Hammer,
Dansky, Gaughran, Rubendall, Kraus, Noe



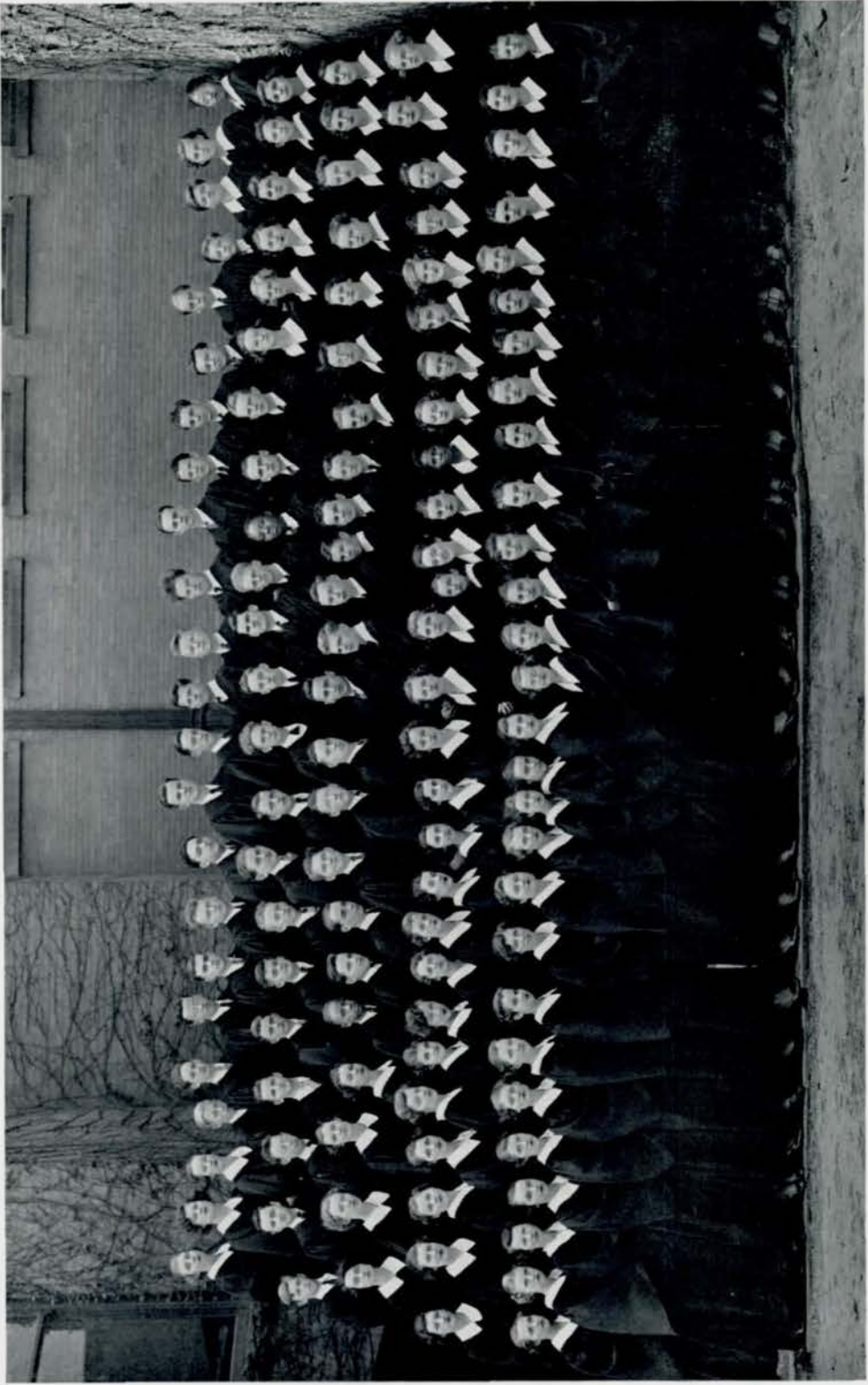
LIBRARY MONITORS

Anderson, McCotter, Wolfe, F. Smith, Bavinger, Hansen, Lundgren, Reisser, Check, Moose, McIntyre, Resnick, Laytin, Youngstrom, Rohrbaugh, Milder, Ellick, Malashock, Kaplan, Nimmo, Seminara, Zelinsky, Lewis, Newbranch, Kelly, Baldwin, Hart, Sachs, Klopp, Chadwell, Thompson, Cotton, Sexson, E. Smith, Hennings, Rubendall, Reynolds, Olson, Gillham, Houser, Tunison, Stone, C. Hindman, Dansky, Rubnitz, Gamert, Mach, H. Hindman, Hoffman, Burkett, Hertzberg, Goldsmith, Woods, Sullivan, Tarry, Beber, Resnick, Mosher, Korney, Dickerson, May



LIBRARY MONITORS

Ritchie, Bartos, Kadavy, McEveny, Fuchs, Ball, Gogela, Ramsey, Hildebrand, Allgaier, Davis, Williams, Buchanan, Cohen, Malkin, Wolf, Hurst, Vuytstek, Rees, Rowley, Kopecky, Milder, McDuff, O'Brien, Slosburg, Kraus, Arbitman, Banc, McClure, Divoky, Harrold, Elmborg, Costanzo, Marsh, Kalweit, Beavers, Fike, Noe, Vogel, Pound, Rosewater, Hammer, Thomas, Knipprath, Eck, Anderson, Knapp, Allis, V. Winget, Jones, Mossman, Allen, Duda, J. Winget, Beranek, Taylor, Peake, DeVaney, Petty, Smith, Cherniss, Osoff, Hirsch, Goetz, Sommer, Coren



A CAPPELLA CHOIR



BOYS' SENIOR GLEE CLUB

Warfel, Hughes, Seagren, O'Hanlon, Jepson, Broad, Rouse, Wallace, Lower, Johnson
Goetz, Dolgoff, Youngstrom, Johnson, Clark, Moran, Thompson, Peterson, Otis, Olson, Clapper
Taylor, Osborn, Halstead, Standeven, Johnson, Ford, Whitney, Patton, Beck, Nestor, Lipps
Savage, Cockle, Andrews, Hemrod, Slabaugh, Lipsey, Larsen, Hyspe, Chuda, Cockle, Wolfson

A CAPPELLA CHOIR

THE A CAPPELLA CHOIR, one of Central's largest and most outstanding organizations, has just completed another highly successful year. Under Mrs. Carol Marhoff Pitts, it is now recognized as a leading choir of its kind throughout the country. Members are promoted to the choir from the senior glee clubs, where they receive elementary training. Mrs. Pitts is assisted by Mrs. Elsie Howe Swanson and Mrs. Irene Haskins Jensen.

This year the choir reached the height of its season when it presented a concert for the University of Minnesota at Minneapolis, May 10. On April 26, it sang for a large audience at Tekamah, Nebraska, and during the year presented concerts at the First Presbyterian church, a luncheon of the Omaha Rotary club, and the annual Spring Festival at Central High school. Members of the choir presented three performances of Victor Herbert's operetta, "Sweethearts," December 13, 14, and 15.

A CAPPELLA CHOIR

AS PICTURED ON OPPOSITE PAGE

M. Anderson, De Witt, McClure, Wrieth, T. Durden, Fellman, Duff, Bednar, Laytin, Traub,
J. Allis, Bernstein, White, Jensen, Wendell, Johns, Wescott, Wolk, Osterholm, Hedges,
Borman, Wiemer, Bell
Bogdon, Resnick, Hennings, B. Fry, Hamerstrom, Heale, Cleveland, A. Dansky, Korisko,
K. Durden, Almond, Wilson, Kennard, Jones, Phelps, Brownlee, Bosin, Borg, Ramsey,
Barnett, Speck, Costanzo
Dolphin, J. Anderson, Parks, Pederson, Biddix, Reynolds, Miller, Reisser, Edwards, Hansen,
Tatelman, Hollingsworth, Moise, Keeley, Tullis, Brennen, Lacina, Thomas, Clark,
Shreck, Eck, Wagenseller, Streeter
J. Winget, McFarland, Harper, Kipling, Kincaid, Higgins, Changstrom, Odorisio, Knox,
Cary, Goetz, K. Smith, Beeson, Pohl, Rohlf, Lerner, Pollard, Allison, V. Anderson,
Sawtell, Ashwood, Wood, Mossman, Fore, Goldsmith, Rahel, Kilbourn
Myers, Dodds, Heagey, Beranek, Prime, V. Winget, Holmstrom, B. Fry, Baysdorfer, Allen,
Danielson, Larson, Dickerson, Stone, Bedell, Taylor, Pitts, Knapp, Morse, Bliss,
H. Allis, M. Jones, Baldwin, Hart, Rivett, Kaspar, E. Dansky, Fletcher



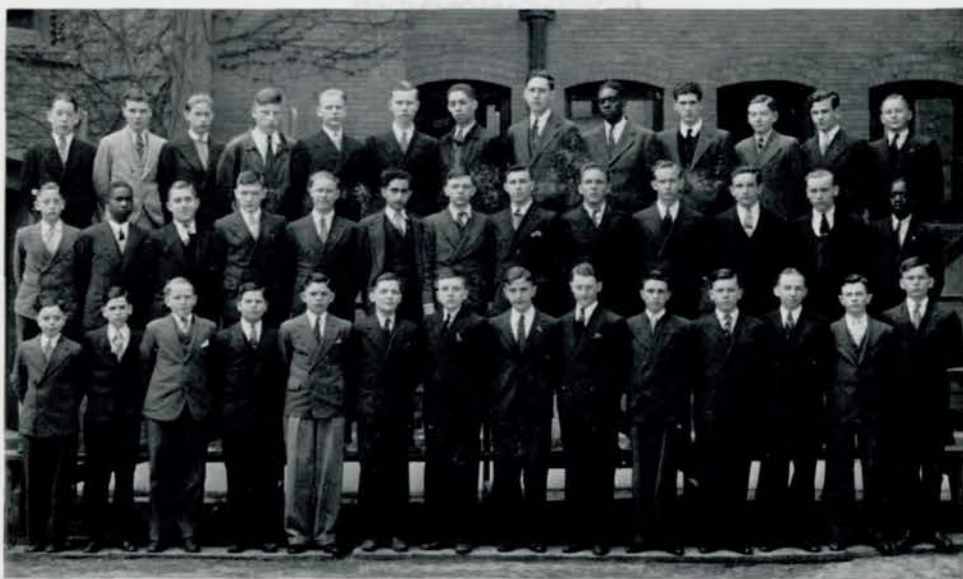
GIRLS' SENIOR GLEE CLUB

Scholder, Crichton, Utt, Markey, Allen, Anderson, Yeager, Mortenson, Pederson, Burt, Eggers, Knight Woods, Turner, Draney, Thomas, Carlson, Birk, Katz, Badalamenti, Covington, Pratt, Ralston, Patterson Poston, Johnson, Richards, Tatelman, Tarnoff, Marsh, Triplett, Liggett, Loss, Tunison, J. Smith, Rainey Kull, Morton, Wear, Hensler, Burnett, Crites, Ensor, Hansen, Faye, Larson, White, Silverman, Whitney



GIRLS' JUNIOR GLEE CLUB

White, Brugman, Britt, Hall, Jackson, Bigelow, Wenstrand, Kursawe, Beerman, Myers, Fee, Koppured, Gaden, Guion, Williams, McCrory, Koehler, Thorup Katzman, Whelen, Cooper, Ovington, Hornstein, Wiggins, Dortch, Steinert, Weaver, E. Smith, Knox, Bane, Osoff, Cohn, Quattrochi, McNutt, Ball, Hurtz, Harry, Harold Baysdorfer, Roccaforte, Wilkinson, Jindra, Odorisio, Caniglia, Bailey, Brehm, Ferer, Santi, Grabow, Hopper, Bowen, Rubnitz, Gill, Enos, Pardun, Alberts, Greenough, Dyer Leftz, Louis, Landstrom, Rosenblum, Plath, Holman, Wagenseller, Yates, Lynch, Torrey, Short, McGrane, Schechter, Altman, Herman, Ernst, Zimmerman, Hirs, Bialac, Speck, Rossito



BOYS' JUNIOR GLEE CLUB

Forehead, Armstrong, Osborn, Sprague, Backlund, Wyrick, King, Posely, Murray, Rich, Sanden, Berwitz,
 Anderson
 Macchietto, Dorsey, Pangle, Catlin, P. Wilson, Novak, Porter, McMillian, Hinchcliff, Werner, Rodwell,
 Severinsen, Goodlett
 A. Wilson, Andrews, Buntz, Twiss, Overholt, Wiseman, Allardyce, Steffen, Glissman, Hickey, Koch,
 Swoboda, Smith, McIntyre

MUSIC DEPARTMENT

THE SENIOR GLEE CLUBS make up a most important part of the music department, for it is from these organizations that Mrs. Carol Marhoff Pitts selects students for membership in the a cappella choir. There are five junior glee clubs which are open to any student, and are under the direction of Mrs. Elsie Howe Swanson. Members pass from junior glee to senior glee clubs for more advanced training under Mrs. Pitts; then, if they have developed sufficient musical ability, they are promoted to the choir. Voice classes are held every day in which students are given vocal training for group and solo work; music appreciation and music history are taught by Mrs. Irene Haskins Jensen. All courses in the department are elective.

Only the choir participated in the annual opera, which was Victor Herbert's "Sweethearts." Parts for the opera are determined by individual tryouts, and leads were played by Mary Jane France, Kermit Hansen, Evelyn Dansky, Bryce Bednar, Rebecca Morse, Joe Edwards, Raymond Wendell, Max Barnett, and Donald Reisser.

The music students presented, in addition to the opera, the Spring Festival, the annual concert at the First Presbyterian church, two broadcasts over station KOIL, and several programs in the high school auditorium. The choir's concert at Minneapolis was broadcast by the National Broadcasting system. Five students, and the Madrigal group, consisting of eight voices, were entered in the vocal division of the state contest, and received excellent and superior ratings. Mrs. Pitts, who attended the North Central Music Educators' conference at Indianapolis, Indiana, March 17-22, was elected president of that organization for the next two years. At this conference, Kermit Hansen and Mary Jane France received first places for the final competition this coming year.

To add to the success of the season, a group of women, under the direction of Miss Chloe Stockard, household arts instructor, and sponsored by the FERA, made new robes and collars for every member of the choir. The year 1934-35 has been the most brilliant year that the music department has ever experienced.



DEBATE TEAM

Wintroub, Stone, Leon, Smith



DEBATE SQUAD

Rosenbaum, Stone, Sullivan, Soshnik, Simon, Leon
Baum, Larsen, Wintroub, Lustgarten, Smith, Chambers

CADET OFFICERS' CLUB



**LIEUTENANT COLONEL
L. DAVID LIVERMORE**

L. DAVID LIVERMORE
LIEUTENANT COLONEL

PAUL F. HERSHMAN
MAJOR FIRST BATTALION

WILLIAM N. CHEEK
MAJOR SECOND BATTALION

JULIAN N. BALL, JR.
CAPTAIN AND ADJUTANT

HARLAN MILDER
CAPTAIN AND ORDNANCE

ROBERT D. FUCHS
CAPTAIN COMPANY A

MERRILL H. ROHRBOUGH
CAPTAIN COMPANY B

KERMIT R. HANSEN
CAPTAIN COMPANY C

JAMES C. BUCHANAN
CAPTAIN COMPANY D

BERNARD A. JOHNSTON, JR.
CAPTAIN COMPANY E

ALFRED G. ELLICK, JR.
CAPTAIN COMPANY F

WALTER H. ROWLEY, JR.
CAPTAIN BAND

ROBERT C. ROGERS
CAPTAIN AND QUARTERMASTER

WILLIAM F. BAVINGER
CAPTAIN AND PERSONNEL ADJUTANT

DANIEL M. MILLER
CAPTAIN AND COMMISSARY

GEORGE M. SEEMANN, JR.
FIRST LIEUTENANT AND ADJUTANT
FIRST BATTALION

ROBERT E. LANGDON, JR.
FIRST LIEUTENANT AND ADJUTANT
SECOND BATTALION

TOM REES
FIRST LIEUTENANT COMPANY A

ROBERT A. MOOSE
FIRST LIEUTENANT COMPANY B

ROBERT W. LUNDGREN
FIRST LIEUTENANT COMPANY C

WILLIAM C. CUNNINGHAM
FIRST LIEUTENANT COMPANY D

JAMES BAER
FIRST LIEUTENANT COMPANY E

WILLIAM P. O'BRIEN
FIRST LIEUTENANT COMPANY F

J. LORAIN ANDERSON
FIRST LIEUTENANT BAND

MILTON J. KOPECKY
FIRST LIEUTENANT BAND

HOWARD KAPLAN
FIRST LIEUTENANT AND AIDE

ROBERT O. NIMMO
SECOND LIEUTENANT AND QUARTERMASTER
FIRST BATTALION

HARRY S. McDUFF
SECOND LIEUTENANT AND QUARTERMASTER
SECOND BATTALION

ROBERT D. McINTYRE
SECOND LIEUTENANT COMPANY A

FRED G. SMITH
SECOND LIEUTENANT COMPANY A

JEROME J. MILDER
SECOND LIEUTENANT COMPANY B

DONALD REYNOLDS
SECOND LIEUTENANT COMPANY B

PHILIP R. MELCHER
SECOND LIEUTENANT COMPANY C

WILLIAM W. WOOD
SECOND LIEUTENANT COMPANY C

W. PAUL TRAUB
SECOND LIEUTENANT COMPANY D

WALTER L. HARRIS
SECOND LIEUTENANT COMPANY D

ROBERT H. KEELEY
SECOND LIEUTENANT COMPANY E

JOE LERNER
SECOND LIEUTENANT COMPANY E

STANLEY J. SLOSBURG
SECOND LIEUTENANT COMPANY F

WALTER WIGHTMAN, JR.
SECOND LIEUTENANT COMPANY F

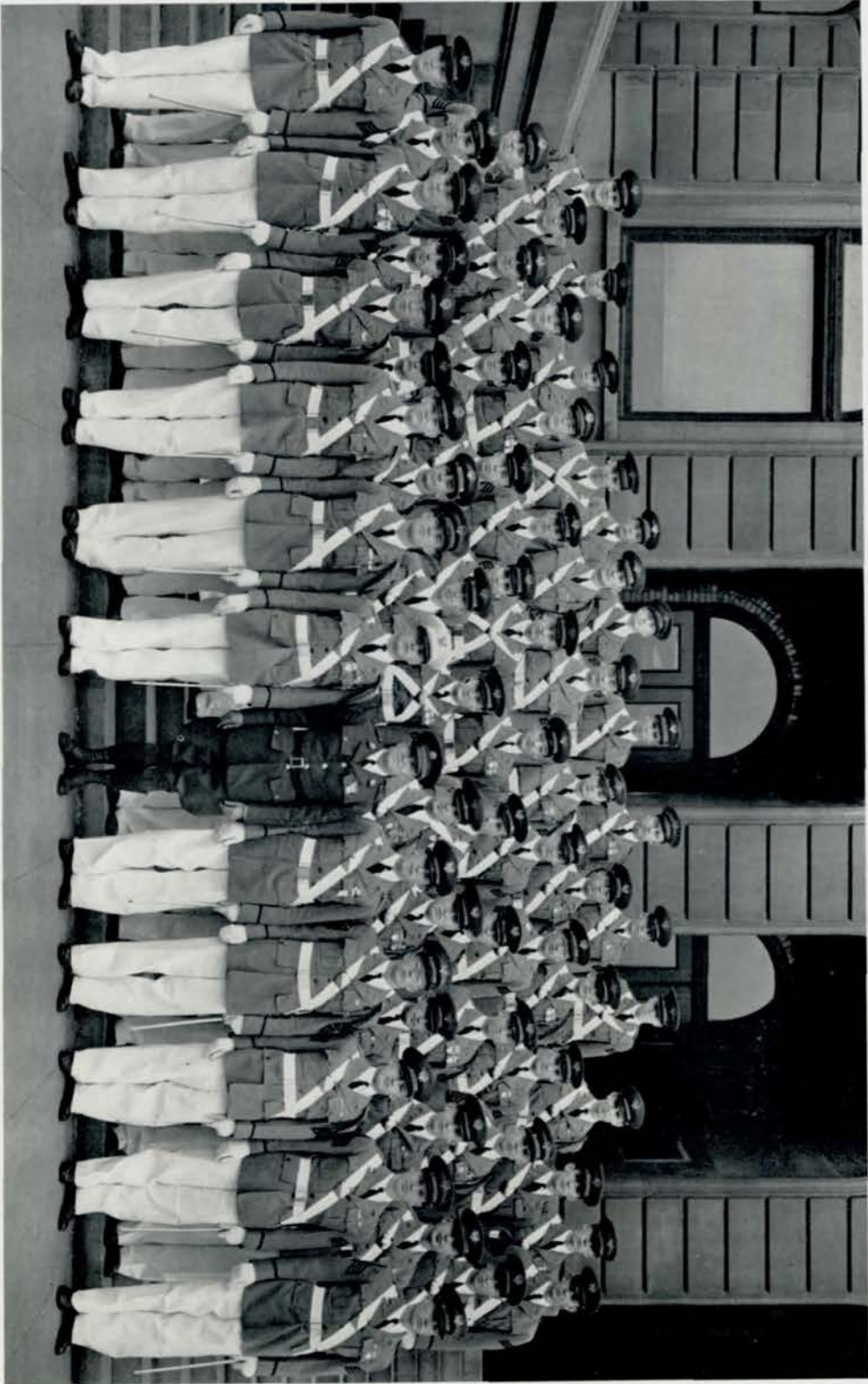
MICHAEL WALSH
SECOND LIEUTENANT COMPANY F

RICHARD CHRISTENSEN
SECOND LIEUTENANT BAND

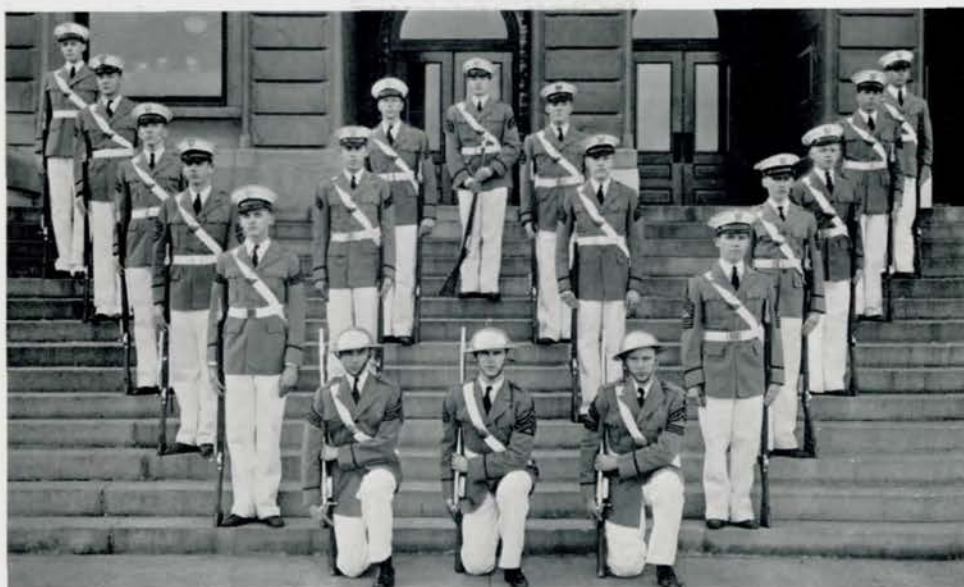
HAROLD FINKEL
SECOND LIEUTENANT BAND

JOSEPH B. HORNSTEIN
SECOND LIEUTENANT BAND

RICHARD MacDUFF
SECOND LIEUTENANT STAFF



CADET OFFICERS' CLUB



CRACK SQUAD

Ball		Field	Putman
Fuchs	Knox	Miller	Goldner
Benson	Haney	Olson	Johnston
Swartz			Rohrbough
Clark			Stelzer
Meyer	Garver	Covert	



BAND

L. Finkel, Brigham, McDonald, Morris, B. Whitney, Cleveland, Glissman, Jensen, Hoberman, Saferstein, Beem, Stuben, J. Duff, Miller, Eisenstatt, Johnson, Ewing, Schlesinger, Thompson, Hefti, M. Anderson, Soshnik, Gass, McDonough, Tatelman, Martin, Clevenger, Griffith, G. Whitney, Block, Phinney, J. Hansen, Freshman, Nalty, MacDuff, H. Finkel, Kopecky, Rowley, J. Anderson, Hornstein, Christensen, Rushlaur
 Not in picture — Rees, Williams



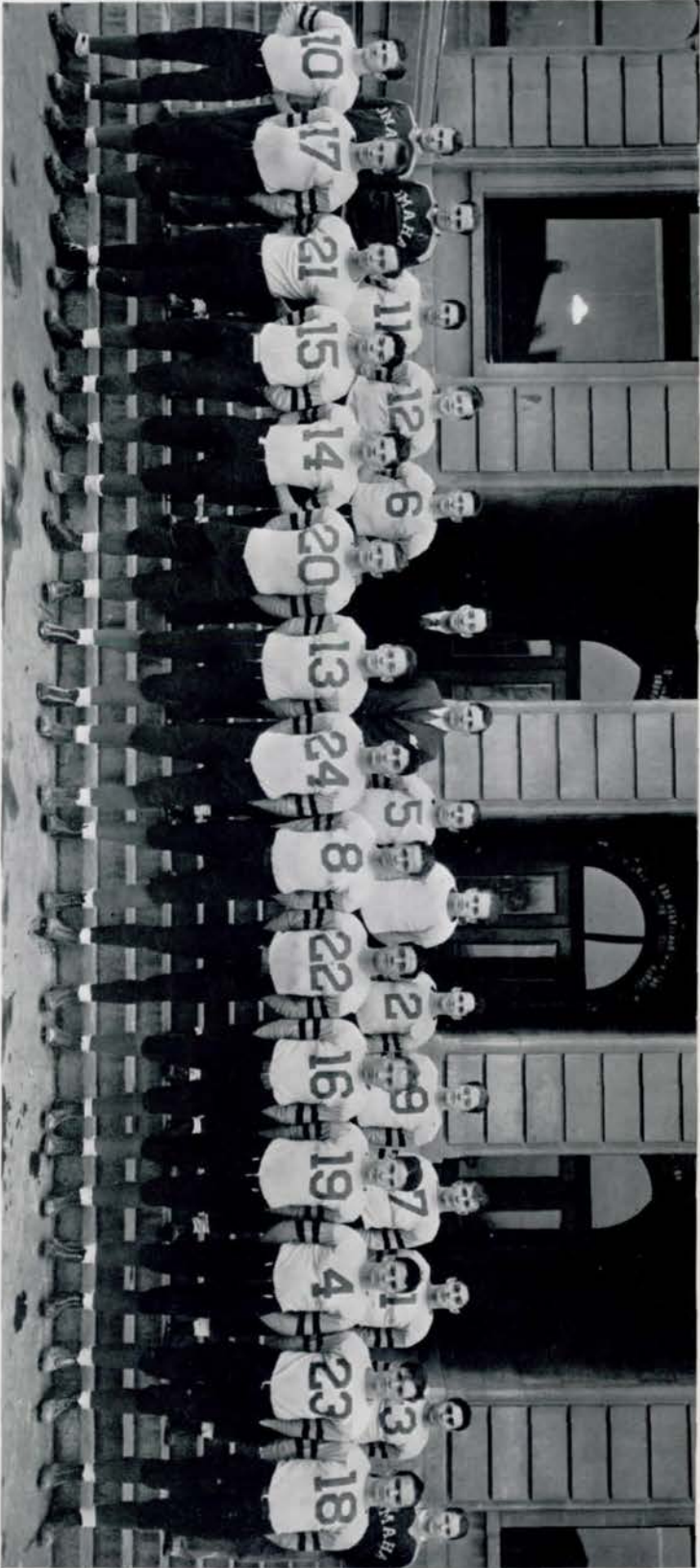
RIFLE TEAM

Kopeccky, Cunningham, Rees, Rohrbough, Rayhorn, Jensen, Burt, Hollingsworth
Schremp, Gilinsky, Hansen, Grabow, Caywood, Whittle, Jorgensen



ENGINEERS

Johnston, Fuchs, Heagey, Livermore
Wolf, Rohrbough, O'Brien, Ellick, Rogers, Bavinger, Buchanan, Miller, Waldron, Ball, Crossman, Abbott,
Olson, Cheek
Arms, Fisk, Garvey, Rowley, Hershman, Hansen, Kopeccky
Not in picture — Baer



FOOTBALL CHAMPIONS

Buchanan, Manager; Hruby, Manager; Veneziano, McGaffin, Stoetzel, Coach Justice, Coach Knipple, Payne, Haney, Baer, Moore, Anderson, Gordon, Catania, Lowe
 Whitney, Reichstadt, McCotter, Ellinger, Sconce, Buttruss, Semann, Monisky, Gressman, Hershman, Captain; Horn, Moody, Robertson, Backstrom, Morfin



BOYS' O-CLUB

Wiggins, Rhodes, Masters, O'Hanlon, Dunn, Pulos, M. Sullivan, Brownlee, Glasson, Sevick, Seemann, Garver
 Kirshenbaum, Di Lorenzo, Baer, Pisasale, Langdon, Reichstadt, Swartz, Moore, Gordon, Morgan, Yaffe
 A. Vuylstek, Abboud, Catania, Veneziano, McCotter, Lundgren, Baltzer, Donham, Horn, Robertson,
 McGaffin, Horacek
 Rogers, Burruss, Sconce, Moran, R. Vuylstek, Lustgarten, Monsky, Gesman, Peterson, Klein, Anderson

FOOTBALL CHAMPIONS

FOR THE FIRST TIME in fifteen years, a Central football team vanquished a Tech grid squad, October 27, 1934, 12 to 0. The Eagles went on to win the Intercity league football championship and to tie with Lincoln and Sioux City Central for first in the Missouri Valley league.

The 1934 football season saw the addition of Charles Justice, a graduate of the University of Nebraska, to the coaching staff as line coach and assistant to F. Y. Knapple. Central was noted for its strong line this season.

Opening the season with Fremont, the Purple-clad gridders swept through an eight game schedule with six wins and two losses. This was Central's first city championship since 1919. Following is the record:

Central—6.....Fremont—0	Central—6.....St. Joseph—14
Central—0.....Lincoln—18	Central—6.....North—0
Central—7.....A. Lincoln—0	Central—13.....Benson—0
Central—12.....Technical—0	Central—12.....South—0

Central was represented by many fine performers on the gridiron, including Ronnie McGaffin, guard; Paul Hershman, tackle and captain of the football squad, and Bob Robertson, fullback, all of whom were named all-city players. Robertson was also given all-state honors.

Probably the most important happening of the 1934 season was the breaking of the jinx which Maroon football teams held over Central. Since 1921, Tech has won every contest save one, which ended in a draw.

In winning the inter-city title, Central was unbeaten, untied, and unscored upon. The Purple squad was remarkable for its fine team play and its high degree of perfection in defensive tactics.



GIRLS' SPORTS

Soiref, Dailey, Parkinson, Wolfe, Meredith, Myers, Clayman, Anderson, Perley, Gardner, Willard, Tyler Lawson, D. Born, La Greca, Johnson, Patterson, Paepel, Ranza, Schantz, Jackson, Catalano, Yaffe, Ensminger, Bergman
 Payne, Glasson, Mehl, McTavish, Easton, Laher, Merritt, Naden, Frank, Nigro, G. Bloch, R. Bloch, Katzman Swoboda, J. Bexten, M. Born, Welch, Broad, Chadwell, L. Bexten, Guenther, Rosenau, Turco, Nelson, Willrodt, Kelleher

GIRLS' SPORTS

FOR THOSE GIRLS who prefer sports to regular gym work, Mrs. Glee Meier, girls' athletics instructor, organized girls' sports classes in 1931. In these classes, the girls receive coaching in the techniques and rules of the seasonal and individual sports. This year one hundred fifty girls, who are enrolled in the gym classes, took part in the golf, ping-pong, and archery exhibitions in the Central District Physical Education convention, which was held during the latter part of March at the Ak-Sar-Ben coliseum.

Riflery, which was organized in 1933, has grown in popularity with the girls this past year. Lois Thomas was the first Central girl to receive the "expert" award, which is attained by passing the pro-marksman and sharpshooter tests. The rifle team, which is coached by Mrs. Meier and Sergeant S. B. Moore, is a branch of the National Rifle association — Junior corps.

The volleyball tournament this year was one of the most exciting in several years. Lorna Borman's junior-senior team captured the pennant by winning all but one game, and the three remaining competitors tied for second place. The hockey and basketball tournaments were equally exciting; Bertha Dailey's squad won the hockey race, and Joan Broad's basketball sextet was the undefeated team in the cage tournament.

The popularity of the swimming classes, which are held at the Jewish Community Center pool, was proved by the enrollment of eighty girls, the largest number ever recorded. Maxine Anderson, Barbara Knapp, Lorna Borman, Elaine Harrington, Sara Gemma, Jean Beber, Margre Henningson, and Betty Burt received their Senior Life Saving awards.



GIRLS' SWIMMING

Pierson, Ditzen, Burt, Grabow, Jones, Farquhar, Pearson, Shestak, Liddel, Kursawe, Beber, Thrane, Schneider, Bates, Richards, Patton, Srb, Crabtree, Anderson, Bennett, Allen, Greenbaum, Lagman, Carlson, Mirowitz, Cosentino, Rosenau, Willrodt, White, Sexson, Borman, Mrs. Meier, Harrington, Knapp, Henningson, Dvorak, Siebert, Kelleher, Hoyer, Walderman, Lerner, Stein, Gebhart, Shotwell, Sorenson, Williams, Pardun



GIRLS' ATHLETIC ASSOCIATION

Turco, Gardner, Glasson, Anderson, Dieterich, Nolan, Easton, Lawson, Welch, Olmstead, Yaffe, Lazerson, Katzman, Caveye, Graves, Chadwell, Broad, Wolfe, Swoboda, Merritt, Burt, Barrett, Saxton, Wightman, Ensminger, Saylan, Payne, Rosenau, Clayman, Wight, Dvorak, Foster, Dailey, Morton, Parks, Bergman, Frank, Zollatuchen, Rosen, Hoyer, Laytin, Hughes, Kuehl, Mehl, Guenther, Borman, Hamann, Keeley



GREENWICH VILLAGERS

Mortensen, Uren, Goldsmith, Fahnestock, Holman, Sorenson, Gaughran, Austin, Louis, Gorelick,
 Silvio, Herman, Kulakofsky, Mach, Ballantyne, Brady, Buchanan, Zenke, Byerly, Larson, Moon,
 Twiss, Bremers, Nielsen, Hall, Wood, Cooper, Kutshe, Hammer, Wagenseller, Klammer
 Not in picture — Rehtmeyer, Singer



CENTRAL HIGH PLAYERS

Shapiro, Charney, Nimmo, Tullis, Youngstrom, Chambers, Lonergan, Armstrong, Baum, Finer, Rosewater,
 Klaiman, Ovington, Kirshenbaum, Hornstein
 Goodbinder, Schrempf, W. Morris, Sullivan, F. Morris, E. Morris, Roe, Ford, Firestone, Howley, Wright,
 Merchant, De Witt, Baruhart, M. Koory, A. Koory, Solomon
 Mills, Petersen, Moon, S. Parks, Cross, Beeson, Backlund, Thomas, Knipprath, Lewis, Crowley, Sorenson,
 Lagman, Gorelick, Ellison, Bickel, Gershater, Bialac
 Lovgren, Kalweit, Poole, Clark, Allyn, Burnett, De Vaney, Rivett, Thomsen, Sheehan, Barnett, Dulin,
 Kelley, Mossman, Quattrochi, Hirs, Martin, Sawtell
 Lerner, Bachman, Stein, L. Weiner, Funder, Weiner, Cramer, Olson, Stone, Cornick, Ernst, Falk, Mosher,
 Eiseman, M. Parks, Gershater



SPRING FROLIC



STUDENT CONTROL

Menagh, Ditzen, Dansky, Rubnitz, Soukup, Bane, Seybold, Abboud, Wilkes, Kilbourn, Henningson, Pomodoro, Fletcher, Anderson, Noc
 Kulakofsky, Beranek, Rosen, Streeter, Foster, Harriss, Eggers, Lipsey, Pepper, C. Hindman, Kalweit, Ramsey, Hammer, Rohrbough, Hirsch
 Milone, Lipari, Beeson, Jensen, Cruise, McArthur, Cramer, Heagey, Eyre, Cherniss, Dulin, H. Hindman, May, Turco, Lipp
 Gaitman, Triplett, Larson, Carlson, Purdham, Porter, Doran, Strauss, Resnick, Sheehan, Osoff, Wiesman, Lazerson, Bickel, Arbitman

SPRING FROLIC

“MISS CENTRAL” was formally presented for the first time in the history of Central High school at an all-girls’ masquerade party, held in the school gymnasium on Saturday night, April 30. Betty Nolan, outstanding athlete, was awarded this honor in a most brilliant ceremony, and the party, carefully planned by Mrs. Irene Haskins Jensen and members of Student Control, was attended by nearly one thousand girls.

From a group of eighteen girls nominated at an earlier meeting, nine who received the most votes in a primary election became candidates. A great deal of campaigning was held and posters, cards, and circulars were distributed.

The time for the coronation came. At the dimming of the lights the orchestra began to play and the queen’s party entered the hall. The committee chairmen led the march and were followed by the candidates and nominees for “Miss Central.” At the end of this beautiful procession, Betty Nolan entered in the lovely purple coronation robe that many an Ak-Sar-Ben queen has worn. Amid the applause of the audience, she walked down the aisle to the throne, where the crown was placed upon her head by Miss Jessie Towne, dean of girls.

A dance orchestra provided music, and dozens of door prizes and awards for the cleverest, prettiest, and most original costumes were given. The party was held in order that the girls, especially freshmen, could become better acquainted with one another, and was such a success that there is no doubt but that it will be repeated in the years to come.

QUEEN AND ATTENDANTS

AS PICTURED ON OPPOSITE PAGE

Hart, Klopp, Sheehan, Rubendall, McGrane, Ellison, Osoff, Sexson, Kelly
 Knapp, Arbitman, Reynolds, Olson, Tholl, Poole, Duda, Suing, Tarry, Rehtmeyer, Lewis, Austin
 The Queen and her attendants: Knapple, Pitts, Nolan, Greenslit, Masters
 Not in picture — Bexten, Gamerl, Ballantyne



STUDENT CONTROL

Rees, Jones, Welch, Ford, Swoboda, Wolfe, Hughes, Guenther, Rehtmeyer, Parkinson, Sexson, Acamo,
 Barrett, Wightman, Whelan, Saxton
 Kelleher, Rosenberry, Mills, Oddo, Tribulato, Gemma, Pearson, Graves, Suing, Wiese, Brugman, Domke,
 Hopper, Ellison, Havens, Robinson
 Hansen, Stone, Morris, Schechter, Poole, Gamerl, Kulesh, Cornick, Kincaid, Saxe, Lewis, Prime, Powell,
 Keller, Kraus
 Hollingshead, Eayrs, Marsh, McGee, Harper, McNulty, Wood, Schwartz, Ballantyne, Himelbloom, Byerly,
 Katz, Smead, Speckter, Blumkin, Johnson



STUDENT CONTROL

Rapp, Catalano, McMillian, Cohen, Arbitman, Burton, King, Gogela, Wolfe, W. Williams, Petersen,
 Severinsen
 Rhodes, Kitchen, Bialac, Bressman, G. Williams, McDonough, McDonald, Field, Picciotti, Saylan, Ludackz,
 McManus
 Whitney, Horn, Milder, Burruss, Monsky, Posley, Baer, Dunn, Young, Vuylstek, Desens, Savage, W. Peterson
 Rainey, Moon, Malone, Higgins, Allen, Thomas, MacBride, Janzen, McCullough, Schneider, Miller, Dayton,
 McGrane, Basso, Silverman



DISCUSSION CLUB

Resnick, Arbitman, Cohen, Seagren, Sherman, Simon, Seminara, Zelinsky
 Rosenburg, Lippett, Malken, Tatelman, Forbes, Klaiman, Miller, Saferstein
 Not in picture — Hornstein, Mosher



SPEAKERS' BUREAU

Knutsen, Bartos, Kadavy, Thompson, Wood, Kennard, Haney, Druessedow, McDuff
 Gordon, J. Sullivan, Schrempf, Richardson, M. Sullivan, Ellick, Moose, Brownlee, Desens, Ganz
 Milder, Straus, Tarnoff, McManus, Johnson, Ziegler, Chambers, Lonergan, M. L. Sullivan
 Rogers, Luikart, Peterson, Milder, Lustgarten, Cornick, Markey, Mosher, Yaffe, Robb



CENTRAL COLLEENS

Janzen, Anderson, Kuehl, E. Allen, Eggers, Harriss, Brugman, M. Allen, Tattelman, Hascall, Bedell
 Schneider, Laytin, Beeson, Kulesh, Hughes, Klaiman, Costanzo, Hamilton, Hassler, Rainey
 Herman, Smead, Allis, Foster, Rubnitz, Nolan, E. Smith, Reynolds, Noe



CENTRAL COLLEENS

R. Gorelick, Fellman, Burkett, Myers, Bane, Berner, McWilliams, Rice, Boien, Smith, Kelly, Votava,
 Pedersen, Hehn
 I. Gorelick, Whitney, Deal, A. Firestone, Utt, Somborg, White, Winget, Howley, Wolf, Clark, Traub,
 F. Firestone
 S. Resnick, Waldman, Edwards, Keller, Polonsky, Osheroff, Barish, Cherniss, Tarnoff, Yousem, Kulakofsky,
 Shapiro, Bordy, Richman
 Wintroub, Bialac, Chapman, Knox, Nogg, Pratt, G. Resnick, Lipsey, Rubnitz, Osoff, Larson, McGrane,
 Arbitman, M. Vogel, A. Vogel



CENTRAL COLLEENS

R. Bloch, G. Bloch, Buchanan, Chait, Kadleman, Allyn, Easton, Dieterich, Whalen, Friedler, White
 McManus, Dodds, Hellerman, Travis, Kirkpatrick, Wright, Kilbourn, Emmert, Larsen, Scholnick, Hirsch,
 White, Jetter
 DeWald, Blumkin, Speckter, Kovitz, Ensor, Wiese, Blaufuss, Henningson, C. Hindman, Callahan, Sheehan,
 Dulin, Patton, Winget, Beranek
 Powell, Rosewater, Prime, Cross, Crites, Olson, Schwartz, Falk, Harper, H. Hindman, Bachman, Lincoln,
 Rosen



CENTRAL COLLEENS

Armstrong, Carson, Thomsen, Smith, Shuler, Otis, Rahel, Merchant, Bernstein, Meiches, Soiref, Stein, Roe
 Wrenn, Rychly, O'Harra, Holmstrom, Heagey, Kincaid, Cherniss, Cooper, Baum, Osoff, Schechter,
 Silverman, Bickel
 Richman, Frank, Carlson, Friedlander, Burnett, Silverman, Domke, Johnson, Friedel, Stein, Gaitman,
 Abramson, Lerner, Berkowitz, Lazerson
 Nelsen, Coffey, Murphy, Poole, Cornick, Streeter, Suing, Dansky, Ballantyne, Hammer, Saxe, Kulakofsky,
 Wiesman, Wilkinson



PROJECT COMMITTEE

Haugh, Chamberlin, Porter, Tannenbaum, Shapiro, Sullivan, Schrempf, Knudsen, Clevenger, Sanden,
 Goddard
 Petersen, Nesselson, Dustin, Kadis, Cross, Cockle, Johnson, Hughes, Gould, Crichton, Armstrong,
 F. Marconitt
 Miss Clark, Freshman, Selby, Purdham, Gallup, Sheehan, M. F. Marconitt, Rivett, Caniglia, Poston,
 Goodbinder
 Not in picture — Bourke, Rosenbaum, Feldman, Viener, Abrahamson



LININGER TRAVEL CLUB

Knowles, Armstrong, Pratt, McCrory, Hurtz, A. Baird, S. Baird, Taylor, Byrne, Clark, Johnson, McGrane,
 Carlson, Bennett, Shuler, Davis, Anderson, Pohl, Harriss, E. Smith, C. Hindman, Allen, Rohrbough,
 Lambert
 Sommer, Hughes, Kraus, Pepper, Schnolnick, Kilbourn, Kennedy, J. Smith, Blaufuss, H. Hindman, Ramsey,
 Eyre, MacDougal
 Whalen, Roeder, Berkowitz, Arhatman, Osoff, Busch, Goodsell, Otis, Kelly, Tunison, Kirkpatrick, Purdham,
 Fore



MATHEMATICS SOCIETY

Conners, Grimes, Thompson, Moody, Leffler, Hansen, Rohrbough, Knox, Cunningham, Field, Stelzer, Johnston
 Richardson, G. Miller, Houser, Ellick, Fuchs, Peterson, Ball, Lundgren, Traub, M. Miller, Henske, MacNeill
 H. McDuff, Benson, Bushman, Backlund, Burt, Ziegler, Nourse, Wolfe, Wood, R. MacDuff, White, Covert
 Poston, Gill, Cotton, Beeson, Larson, Tarnoff, Burke, Devereaux, Chamberlin, Young, Allen, Johnson, Vogel



CENTRAL COMMITTEE

Stelzer, H. Houser, Grimes, Moose, Ball, Fuchs, Ellick, Cheek, Naughtin, Flothow, Sample
 Field, Dickinson, Zoesch, Knox, Boyer, Goldner, Henske, McCampbell, Milder
 Miller, A. Baird, Pratt, S. Baird, Kennedy, Smith, Eyre, Ramsey, Reynolds, Rubendall, Dodds, Lambert
 Klopp, Sachs, Busch, Tunison, Kelly, Heagey, M. Houser, Otis, Tarry, Sullivan, MacDougal, Roeder



GENTLEMEN'S FRENCH CLUB

Boyer, Gallup, Milder, Swartz, McIntyre, Field, Rogers, Hamerstrom
 Buchanan, Pangle, Putnam, Smith, Kaplan, Gordon, B. Slosburg, Goetz
 S. Slosburg, Gilinsky, F. Smith, Allgaier, Miss Bozell, Rees, Dansky



LE CERCLE FRANCAIS

B. Bordy, J. White, Bauder, Oddo, Cherniss, Hirsch, R. Friedman, Reynolds, Rubendall, L. White, Lazerson
 Lipp, Hoffman, Ferer, Goetz, F. Bordy, Berner, F. Heagey, Sachs, Appleby, Patton, Beavers
 M. Heagey, Fuller, Bosin, De Witt, B. Campbell, Kulesh, Tarry, Pratt, Emmert, Dolphin, Winget
 O'Hanlon, Newbranch, P. Friedman, Baldwin, Lewis, Patrick, Klopp, Miss Bozell, Woods, Osoff, Arbitman
 Not in picture — Travis



LATIN CLUB

Laferla, Scigliano, Birk, Bode, Abbott, C. McManus, Smith, Grabow, Kennedy, Phillips, Fike, J. McManus, Maxwell, Deal, Margolin, Bressman, Gogela, Morris, Zoesch, Terrell, Rosenblatt, Resnick, Carter, Knox, Beerman, Higgins, Domke, Rubnitz, Hodek, Constanzo, Whelan, Rainey, McNulty, Griffin, Harnett, Odorisio, Kaster, Ensor, Tindell, Weiss, Suing, Saxe, Wilkinson, Dodds



LOS SABIOS

Patton, James, Friedman, Cohen, Backlund, Sasche, Leon, Reese, Noble, Rosenberg, Mueller, Haney, Ramsey, Arthur, Anderson, Peterson, Yaffe, Baum, Severinsen, Schneider, Castleman, Beranek, Polonsky, Himmelstein, Weiner, Howley, Strauss, Balke, Marsh, Kelleher, Blumkin, Speckter, Kovitz, Fishberg, Gemma, Bernstein, Schwartz, Hypse, Call, Miller, Ranza, Bedell



HOME ECONOMICS CLUB

Hansen, Triplett, Hennings, Frohardt, Resnick, Malone, L. M. Wolfson, R. M. Wolfson
 Noffnagle, Stephanek, Bennett, Larson, Changstrom, Eck, Bernstein, Basso
 Gillespie, Nielsen, Peake, Smead, Henningson, Jorgensen, McCullough, Wiesman



TITIANS

Morris, Linville, Prime, Nolan, Brugman, Winget, Hughes, Goldsmith, Lierk
 Hollingshead, McCracken, Mills, McArthur, Byerly, Odoriso, Doyle, Peake, Duda, Silverman
 Edwards, Gee, Doran, Knapp, Poole, Mrs. Jensen, Smith, Robinson, Riha, Vogel



ORCHESTRA

Cleveland, Rushlau, Rosenblum, Block, Soshnik, Jensen, Hoberman, Johnson, McConnell, Rhodes, Bialae, Parsons
 Forehead, Manderson, Lee, Griffith, Clevenger, Morris, Gogela, Christensen, Robert, Piccola, Hefti, Gass
 Nesselson, Saylan, Schanz, Almond, Mallett, L. Anderson, Schlesinger, McDonough, Duff, Lombard,
 Kuehl, Fiedler
 Phillips, Riha, Wyrick, M. Merritt, Beber, Hornstein, Kulesh, Campbell, Cockle, D. Merritt, Sgroi, Moore,
 Worrell

SENIOR DAY

A NOVEL PLAN, which may become a Central High school tradition, was inaugurated this year when the class of 1935 held the first official senior day on April 12, the last day before spring vacation. In the morning, those seniors who had filed applications which had been accepted taught classes under the direction of the teachers.

At noon, the seniors lunched together in the north wing of the cafeteria, afterwards going to Miller park, where golf and tennis tournaments were held, and where the Birchwood club house was turned over to the class for the rest of the day. Ping-pong, billiard, and bridge tournaments were held in the club house.

Supper was provided at the Birchwood by the Central High cafeteria, and the climax of the day was a dance in the evening, when a special senior day newspaper was read aloud to the assembled class in the Birchwood dance hall.

This plan was adopted after two weeks of consideration by a specially appointed senior day committee and of class discussion of various other proposals. Miss Mary A. Parker, executive sponsor of the class, was largely instrumental in making the event possible.

The entire plan was approved by the faculty, since it eliminated all unofficial fun during school by the seniors, and since it was felt that the seniors deserved some concession from routine during their last year. The senior class returned from its picnic and dance more closely united than ever before.

AUTOGRAPHS

DOUGLAS PRINTING CO.
OMAHA