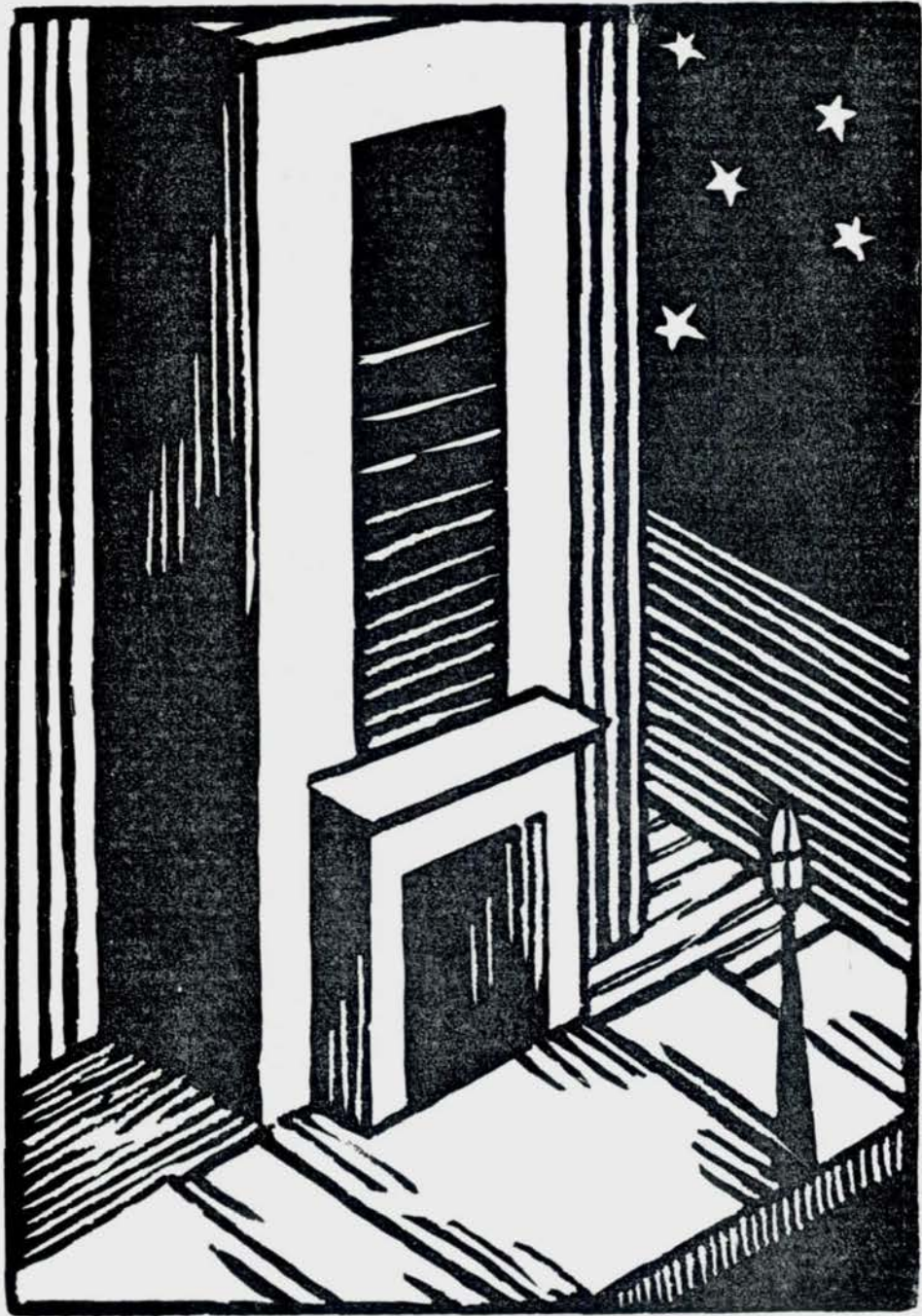


CHS 1934



*Designed and cut by Alice Indoe*



# O-BOOK

Central High School

SENIOR CLASS



OMAHA, NEBRASKA

VOLUME XLVIII

1934

## STAFF

EDITOR IN CHIEF

**RUTH M. JONES**

ASSOCIATE EDITORS

**DOLLY BLISS**

**ELEANOR F. GREUSEL**

**MARGARET MORAN**

**STANLEY E. POTTER**

**BERTHA SLUTSKY**

ART EDITORS

**CHARLOTTE BUETTENBACK**

**ED MULLEN**

CIRCULATION MANAGER

**EDWARD E. ADAMS**

BUSINESS MANAGER

**WILLIAM M. ROSENBAUM**

LITERARY ADVISER

**ANNE LANE SAVIDGE**

ART ADVISER

**MARY L. ANGOOD**

BUSINESS ADVISER

**ANDREW NELSEN**



## **CONTENTS**

### **PART I**

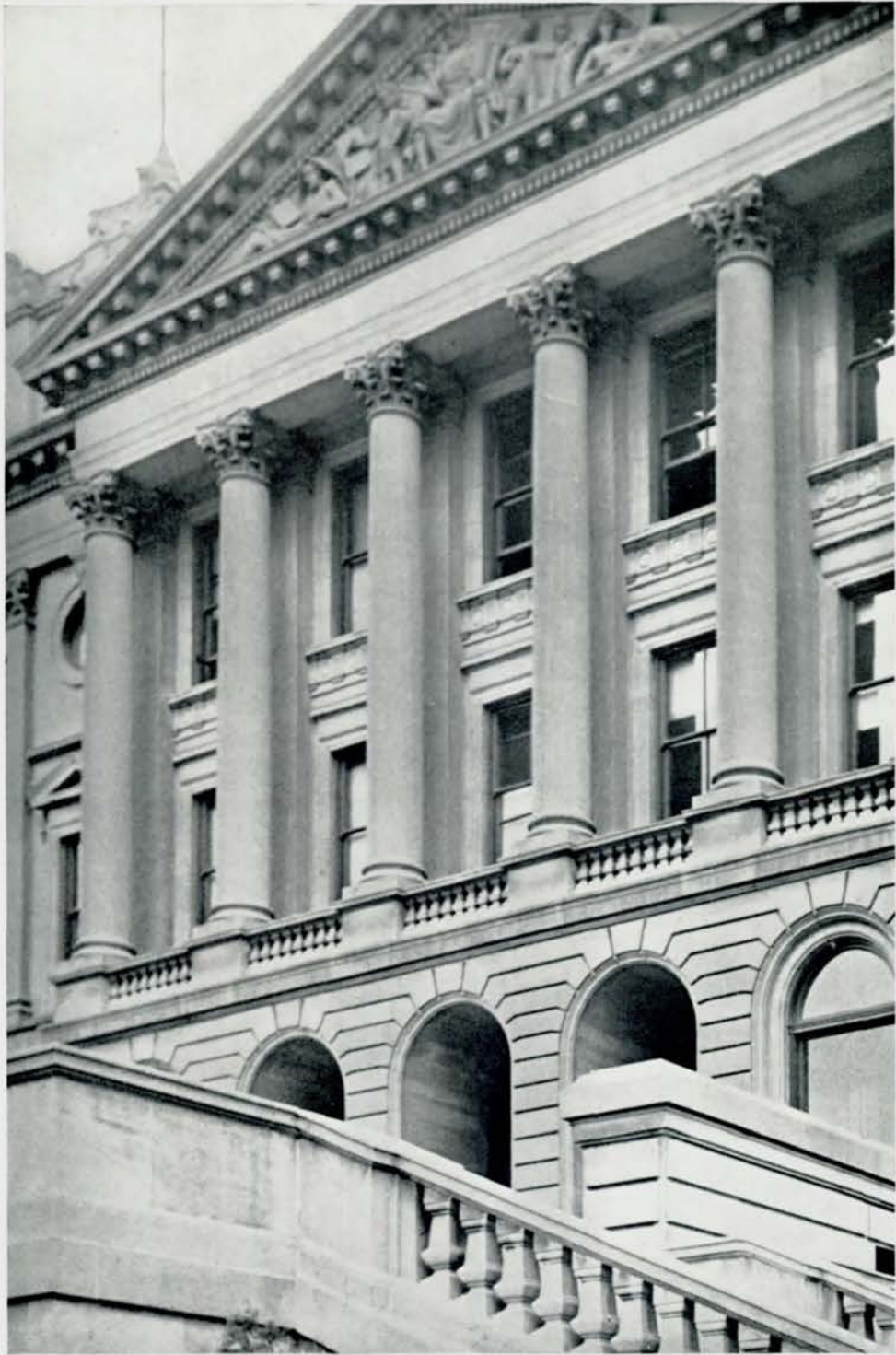
**ADMINISTRATION**  
**SENIOR ALBUM**

### **PART II**

**HONORS**  
**LITERARY**  
**MUSIC**  
**MILITARY**  
**ATHLETICS**

### **PART III**

**CLUBS**  
**CARTOON**  
**AUTOGRAPHS**



**EAST ENTRANCE**  
CENTRAL HIGH SCHOOL



**JOSEPH G. MASTERS**

PRINCIPAL





**FRED HILL**  
ASSISTANT PRINCIPAL  
DEAN OF BOYS



**JESSIE M. TOWNE**  
ASSISTANT PRINCIPAL  
DEAN OF GIRLS



**DR. H. A. SENTER**  
DEAN OF FACULTY

**CENTRAL HIGH SCHOOL FACULTY**

**FRED HILL**  
ASSISTANT PRINCIPAL  
DEAN OF BOYS

**JOSEPH G. MASTERS**  
PRINCIPAL

**DR. H. A. SENTER**  
DEAN OF FACULTY

**JESSIE M. TOWNE**  
ASSISTANT PRINCIPAL  
DEAN OF GIRLS

**ENGLISH**

SARA VORE TAYLOR  
BERTHA NEALE  
TILLIE C. ANDERBERRY  
NELL BRIDENBAUGH  
JULIA T. CARLSON  
GENEIVE W. CLARK  
AUGUSTA KIBLER  
GRACE H. McMANUS  
MARGARET A. MUELLER  
ANNE LANE SAVIDGE  
HELEN SOMMER  
LOUISE STEGNER  
MARTINA SWENSON  
JESSIE M. TOWNE  
IDA A. WARD  
ALICE WEST

**MATHEMATICS**

ANDREW NELSEN  
AMANDA E. ANDERSON  
G. E. BARNHILL  
R. B. BEDELL  
L. N. BEXTEN  
MAYBEL BURNS  
GRACE FAWTHROP  
FRED HILL  
PEARL JUDKINS  
SARAH A. RYAN

**HISTORY**

GENEIVE W. CLARK  
IRMA COSTELLO  
MARY E. ELLIOTT  
EDITH C. FIELD  
ELSIE FISHER  
JULIETTE GRIFFIN  
ELIZABETH KIEWIT  
MARY A. PARKER  
NELLE RANDALL

**MODERN LANGUAGES**

BESS BOZELL  
BARBARA A. CHATELAIN  
ELLA L. PHELPS  
PEARL ROCKFELLOW  
MARGARITA VARTANIAN

**LATIN**

BERNICE S. ENGLE  
ELIZABETH CRAVEN  
JANE T. FULTON  
BESSIE S. RATHBUN

**PHYSICAL SCIENCE**

F. H. GULGARD  
J. G. SCHMIDT  
DR. H. A. SENTER

**NATURAL SCIENCE**

CAROLINE C. STRINGER  
JENNIE E. HULTMAN  
HELEN C. LANE

**SOCIAL SCIENCE**

AUTUMN DAVIES  
IRMA COSTELLO  
F. Y. KNAPPLE  
EDITH C. FIELD

**DEBATE**

SARAH A. RYAN

**EXPRESSION**

MYRNA VANCE JONES  
DORIS H. HAHN

**MUSIC**

CAROL M. PITTS  
IRENE HASKINS JENSEN  
ELSIE HOWE SWANSON  
HENRY G. COX

**MECHANICAL DRAWING**

O. J. FRANKLIN

**MANUAL TRAINING**

L. N. BEXTEN

**ART**

MARY ANGOOD

**JOURNALISM**

ANNE LANE SAVIDGE

**COMMERCIAL**

EDNA S. DANA  
WILMA M. COOPER  
GRACE M. KNOTT  
HARRIET RYMER  
ANGELINE TAUCHEN  
MILDRED TANGEMAN

**HOUSEHOLD ARTS**

CHLOE STOCKARD  
RUBY RICHARDSON  
MARY WISEMAN

**PHYSICAL TRAINING**

GLEE G. MEIER  
F. Y. KNAPPLE

**CAFETERIA**

RUBY RICHARDSON

**LIBRARY**

ZORA SHIELDS  
CATHERINE S. BLANCHARD  
HAZEL M. STEWART

**OFFICE**

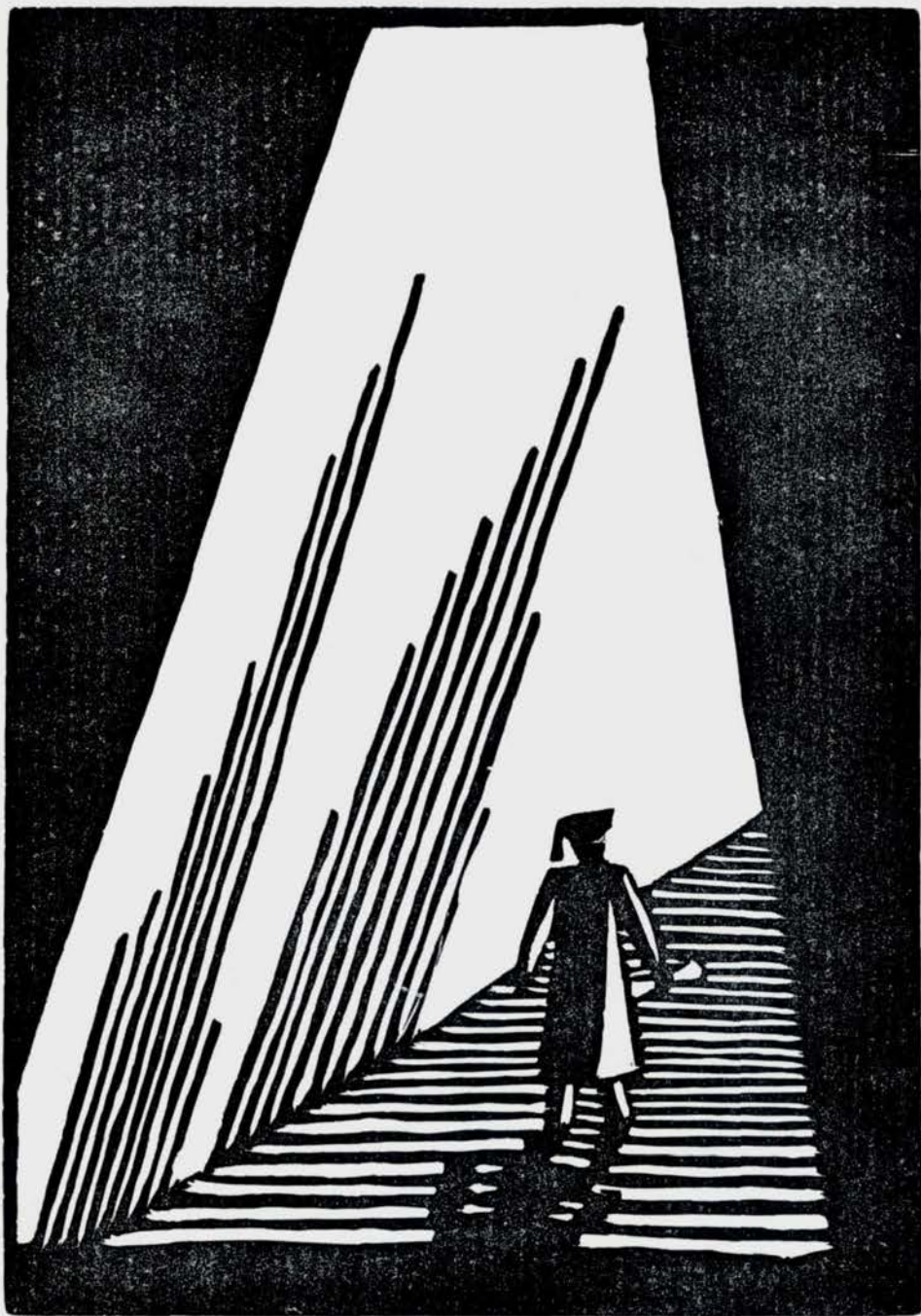
BESSIE GALLAGHER  
JENNIE ROBERTS  
HELEN BLIXT

**REGISTRAR**

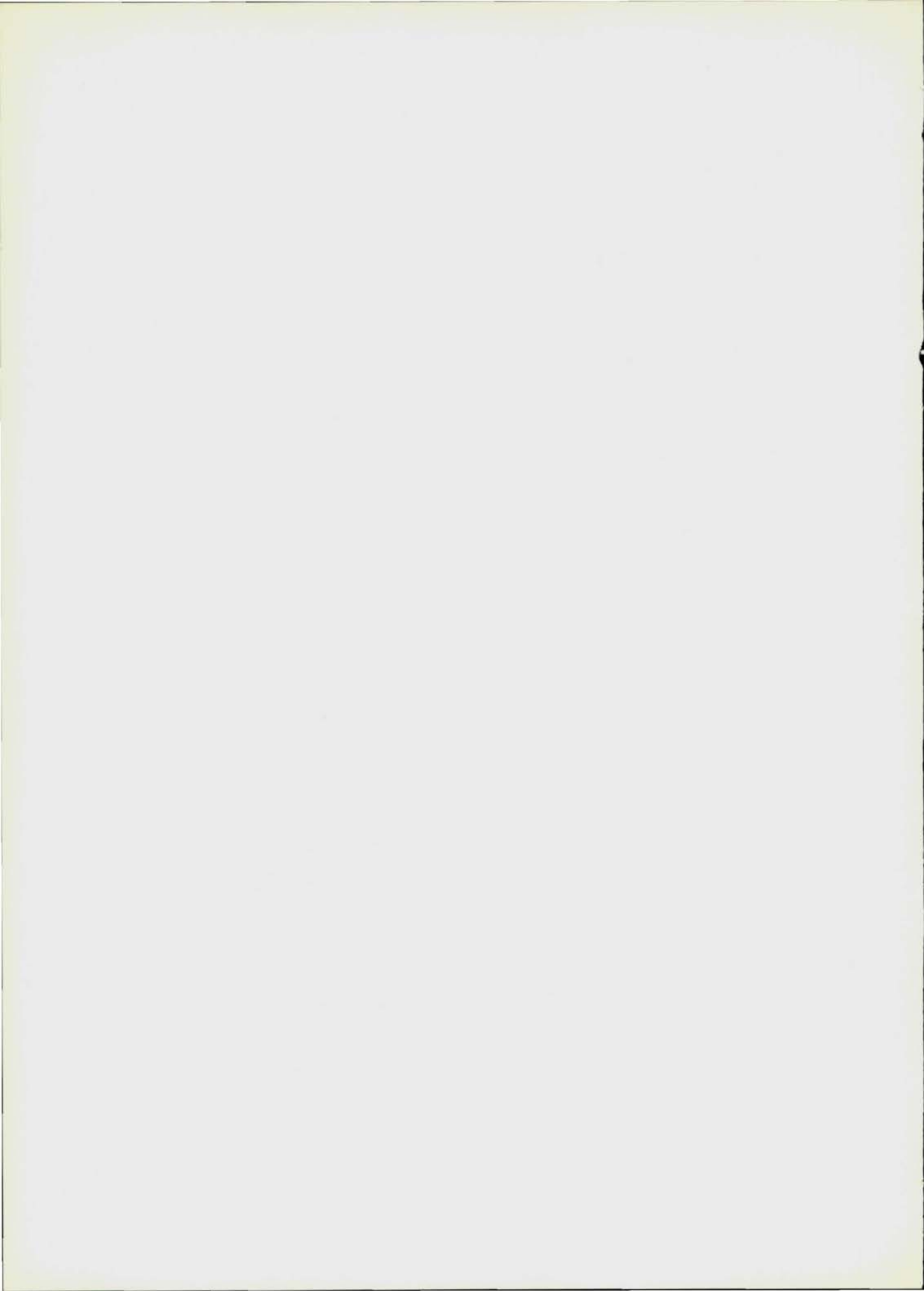
ADRIAN WESTBERG

**CLERK OF BOOKROOM**

PAULINE HARTNETT



*Designed and cut by Carol Wigton.*





**DARRELL CHURCHILL**

PRESIDENT, JUNE

NATIONAL HONOR SOCIETY

Register Staff (3,4), Sports Editor (3), Business Manager (4); Baseball (3,4); Basketball (1,2,3,4); Orchestra (1,2,3,4); Opera (2,3,4); Road Show (1,2,3,4); Student Control (4), President (4); Commercial Contest (3,4); Student Control Convention (4); Character Conference (4); Library Monitor (4); Boys' O-Club (3,4); Athletic Honor Society (4); Quill and Scroll (3,4); Junior Honor Society (3); Regiment (1); Crack Platoon (1); National High School Awards (4).

**JOSEPH WHALEN**

VICE PRESIDENT, JUNE

Boys' O-Club (3,4); Football (1,2,3,4); Athletic Manager (3,4); Basketball (1,2), Manager (4); Baseball (1,2); Track (1); Road Show (4); Boys' Junior Glee Club (1); Stage Crew (2).

**HENRIETTA NILSSON**

SECRETARY, JUNE

NATIONAL HONOR SOCIETY

Lining Travel Club (4); Central Colleens (3,4), President (4); Senior Play (4); Student Control (4); Library Monitor (4); Junior Honor Society (3).

**GEORGE PAYNE**

TREASURER, JUNE

NATIONAL HONOR SOCIETY

Regiment (1,2,3,4), Captain (4); C.O.C. (4); Engineers (3,4), Captain (4); Loquax (4); Boys' O-Club (2,3,4), Vice President (3), President (4); Athletic Honor Society (4); Track (1,2,3,4); Basketball (1,2,3,4); Football (1,2,3,4); Monitors' Council (4); Library Monitor (4); Latin Club (1,2), Secretary (2); Hi-Y (4); Speakers' Bureau (4); Boosters' Club (1,2), Secretary (1), President (2).

**CHRISTINE NALL**

SERGEANT AT ARMS, JUNE

O-Book Staff (4); Spanish Paper (4); Student Control (4); Greenwich Villagers (3,4); Treasurer (3), Secretary (4); Art Contest (3); Girls' Junior Glee Club (4); Library Monitor (3); Girls' Natural Science Club, Treasurer (2); Los Sabios (3); Lining Travel Club (2); Central Colleens (1); Gym Exhibition (1).

**MARJORIE CLARK**

VICE PRESIDENT, JANUARY

Library Monitor (4); Register Staff (4); Girls' Senior Glee Club (3); Central Colleens (3,4).

**JOHN MONEY**

TREASURER, JANUARY

Road Show (1,2,3,4); Opera (1,2,3,4); A Cappella Choir (3); Student Control (2); Boys' Senior Glee Club (2); Boys' Junior Glee Club (1).

**ROBERT STIEFLER**

PARLIAMENTARIAN

NATIONAL HONOR SOCIETY

Register Staff (4); Quill and Scroll (4); O-Book Staff (3); Declamatory Contest (2,3,4); Monitors' Council (4); Discussion Club (4); Forensic Society (3,4), President (3); Debate Team (2,3,4); Tennis (2,3,4); Junior Honor Society (1,3); Regiment (1); Inter-Club Council (1); Football (1).

**JERENE GROBEE**

REPORTER, JUNE

NATIONAL HONOR SOCIETY

O-Book Staff (4); Register Staff (4); World-Herald Correspondent (4); Quill and Scroll (4); National Thespians (4); "College Widow" (4); Senior Play (4); Declamatory Contest (4); Central High Players (3,4); Junior Honor Society (1,2,3); Student Control (4); Girls' Junior Glee Club (3); G.A.A. (2); Swimming (2,4); Project Committee (2); Boosters' Club (2); Road Show (2,4).

**STANLEY POTTER**

SERGEANT AT ARMS, JUNE

NATIONAL HONOR SOCIETY

Regiment (1,2,3,4), Captain (4); C.O.C. (4); Engineers (4); Crack Squad (3); O-Book Staff, Associate Editor (4); Crack Platoon (2); Monitors' Council (4); Library Monitor (4); Senior Play (4); Gentlemen's French Club (4); Central Committee (2,3,4); Junior Honor Society (1,2,3); Hi-Y (3,4); Road Show (3).





**NIXIE ABBOTT**

Central Colleens (1, 2, 3, 4); Inter-Club Council (2); Boosters' Club (1); Student Control (4); Girls' Junior Glee Club (1); Girls' Senior Glee Club (2,3,4).



**ELAINE ACKERMANN**

Library Monitor (4); Home Economics Club (4); Student Control (3); Girls' Junior Glee Club (2); Central Colleens (1).



**MOLLIE ACKERMAN**

NATIONAL HONOR SOCIETY

Library Monitor (4); Central Colleens (1,2,3,4); Student Control (3, 4); Girls' Natural Science Club (2, 3); Junior Honor Society (1,2).



**EDWARD ADAMS**

NATIONAL HONOR SOCIETY

Regiment (1,2,3,4), Major (4); C. O.C. (4); O-Book Staff, Circulation Manager (4); Road Show (2,3,4); Junior Honor Society (1,2,3); Crack Squad (2,3,4), Captain (4); Engineers (4); Boys' O-Club (2, 4); Tumbling (2,3); Hi-Y (3); Mathematics Society (2); Los Sabios (3); Forensic Society (1); Swimming (1).



**EMILY ALLEN**

**HELEN AMOS**

Library Monitor (4); Los Sabios (4); Orchestra (2,3,4); Central Colleens (2, 3, 4); Girls' Junior Glee Club (3); Swimming (3); Road Show (3).

**WINNIE ANDERSEN**

Register Staff (4); Library Monitor (4); Speakers' Bureau (2); Make-up (2); G.A.A. (2,3,4); Baseball (1,2,3,4); Basketball (1,2,3,4); Volleyball (1,2,3,4); Hockey (1,3,4); Archery Team (4); Tennis (2); Golf (2); Swimming (2,4), Lifeguard (2).

**MARGARET ANDERSON**

Library Monitor (4); Road Show (4); Senior Play (4); Student Control (2, 3, 4); Stage Crew (3, 4); Make-up (1,2,4); Le Cercle Francais (3, 4); Swimming, Lifeguard (2,3); G.A.A. (2,3); Latin Club (1, 2), Sergeant at Arms (2); Register Staff (2,3); Loquax (2).

**VIRGINIA ANDERSON**

A Cappella Choir (4); National Music Supervisors' Convention (4); Opera (3,4), Costumes (4); Senior Play (4); National Thespians (4); Library Monitor (4); Student Control (3,4); Speakers' Bureau (3,4); Central High Players (3,4), "College Widow" (4), "First Night" (3); Road Show (2,3); Girls' Junior Glee Club (3); Girls' Senior Glee Club (3); G.A.A. (1, 2, 3); Tennis (3, 4); Basketball (1, 2); Hockey (1,2); Swimming (1); Program Chairman, Senior Class (4).

**ADELAIDE ARMSTRONG**

Senior Play (4); Road Show (4); Home Economics Club (4); Girls' Natural Science Club (3); French Play, Costumes (3); Central Colleens (1,2).

**JOHN ARNOLD**

**MORTON BALDOCK**

Register Staff, Circulation Manager (4); O-Book Staff (4); Library Monitor (4); Quill and Scroll (4); Regiment (1,2).



**JUNE ARTISON**

Girls' Junior Glee Club (2); Girls' Senior Glee Club (3); A Cappella Choir (4).

**HELEN BALLBECK**

Student Control (4).



**MINABELLE ATWOOD**

Senior Play (4); Student Control (4); Titians (4); Girls' Natural Science Club (3).

**LAURA FRANCES BANE**

Library Monitor (4); Central Colleens (2,3,4); Student Control (1,3,4); Mathematics Society (3); Girls' Natural Science Club (2); Swimming, Lifeguard (3).



**DOROTHY BACKLUND**

Home Economics Club (3,4), President (4); Library Monitor (4); Central High Players (4); Senior Play (4); A Cappella Choir (3,4); Opera (4); Girls' Senior Glee Club (2); Girls' Junior Glee Club (1,2); "College Widow," Costumes (4); "Moonshine and Honeysuckle," Costumes (4).

**SHIRLEY BARISH**

Lining Travel Club (2,3,4); Central Colleens (1,2,3,4); Student Control (3); Junior Honor Society (3).



**VIRGINIA BAILY**

Speakers' Bureau (4); Central Colleens (3,4), Secretary (4); Swimming (3); Mathematics Society (2,3).

**WILLIAM BARNETT**

Chairman Senior Home Room (4); Opera (4); A Cappella Choir (2,3,4); National Music Supervisors' Convention (4); Boys' Quartetts (3,4); Road Show (3,4); Football (1,2,3); Basketball (1,2,3); Track (1,2,3); Boys' Senior Glee Club (2); Boys' Junior Glee Club (1).







**BETTY BARR**

Library Monitor (4); Senior Play (4); Le Cercle Francais (2, 3, 4), President (4); Secretary, Senior Home Room (4); Central Committee (3,4); Lininger Travel Club (2); Girls' Junior Glee Club (2); Girls' Senior Glee Club (2,3); Opera (2); Road Show (2,3); French Play (2,3).

**HARLAND BENTLEY**

National Music Supervisors' Convention (4); Opera (1,2,3); Los Sabios (2, 3, 4); Orchestra (3, 4); Library Monitor (4); Spanish Play (4); Tennis (4); Atlas Club (1,2); Boys' Senior Glee Club (2); Boys' Junior Glee Club (1); Junior Honor Society (2); State Music Contest (2).



**ARVILLA BAUER**

Senior Play (4); Central High Players (2,3,4), Treasurer (4); "College Widow" Prompter (4); "Moonshine and Honeysuckle" (4); "First Night" (3); "Daddy Long-Legs" (2); Make-up (2); Student Control (2,3); Central Colleens (1); National Thespians (3,4).

**FRANCES BERGMAN**

O-Book Staff (4); Register Staff (4); Library Monitor (4); Lininger Travel Club (3,4); Girls' Junior Glee Club (1).



**RUTH BAYSORFER**

Orchestra (1, 2, 3, 4); Central Colleens (1,2); Student Control (3); Swimming (2).

**SELMA BERKOWITZ**

**NATIONAL HONOR SOCIETY**

Library Monitor (4); Junior Honor Society (1, 2, 3); Lininger Travel Club (2,3), Vice President (3); Student Control (2); Le Cercle Francais (3); Central Colleens (2).



**HARRIETT BEATON**

Senior Play (4); Library Monitor (4); Le Cercle Francais (3,4); French Play (3); Lininger Travel Club (3).

**COURTNEY BERNER**

Library Monitor (4); Student Control (2,3,4); Opera (4); Girls' Senior Glee Club (4); Girls' Junior Glee Club (3); Central Colleens (3).



**BRUCE BEDNAR**

**NATIONAL HONOR SOCIETY**

Regiment (1,2,3,4), First Lieutenant (4); C. O. C. (4); A Cappella Choir (2,3,4); Junior Honor Society (1,2); Register Staff, Editor in Chief (4); Quill and Scroll (4); Student Control (3); Boys' Junior Glee Club (1); Boys' Senior Glee Club (2); Central High Players (4); Orchestra (1,2,3); Opera (2,3, 4); Road Show (1, 2, 3, 4); Senior Play (4); "College Widow" (4); Delegate Student Control Convention (3).

**BABETTE BERNSTEINE**

Library Monitor (4); Girls' Junior Glee Club (4); Student Control (3).

**DAVID BERNSTEIN**

Regiment (1, 2, 3, 4), Second Lieutenant (4); C.O.C. (4); O-Book Staff (4); Cheerleader (2,3,4), Captain (3,4); Spring Music Concert (2,3,4); A Cappella Choir (2,3,4); National Music Supervisors' Convention (4); State Music Contests (3); Opera (3,4); Road Show (2,3, 4); Costumes, Opera (2); Biology Round Table (2); Boys' Junior Glee Club (2); Junior Honor Society (3).

**SYLVIA BERTAGNI**

Los Sabios (4); Central Colleens (4); Home Economics Club (3).

**VIRGINIA BICHLMEIR**

Library Monitor (4); Senior Play (4); Lininger Travel Club (2,3,4), Vice President (4); Speakers' Bureau (3,4); Central Colleens (1,2); Girls' Junior Glee Club (2).

**CARLO BIMBO**

**SYLVIA BINDER**  
Central Colleens (2, 3, 4); Tennis (4); Lininger Travel Club (2); Girls' Natural Science Club (2).

**FRANCES DORA BISHOP**

A Cappella Choir (2,3,4); National Music Supervisors' Convention (4); Library Monitor (4); Student Control (4); Girls' Senior Glee Club (2); State Music Contest (2).

**MARGARET BLAIR**

Library Monitor (3); Girls' Junior Glee Club (1).

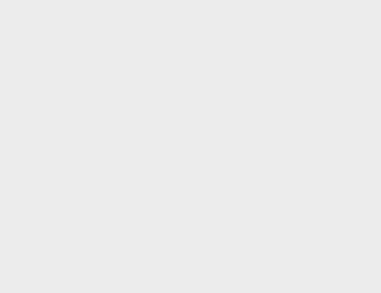
**MAXINE BLAIR**

**MARGARET BLAUFUSS**

Library Monitor (4); Senior Play (4); Le Cercle Francais (4); Central Committee (3,4); Road Show (2,3,4); French Play (3); Girls' Natural Science Club (2).

**DOLLY BLISS**

O-Book Staff, Associate Editor (4); A Cappella Choir (1,2,3,4); Opera (2,3,4); National Music Supervisors' Convention (4); Road Show (1,3,4); Library Monitor (4); State Music Contest (2); Latin Club (2); Girls' Junior Glee Club (1); Spring Music Contest (1,2,3,4).





**EVELYN BLUMENTHAL**

Senior Play (4); Central Colleens (4); G.A.A. (4); Art Contest (4); Swimming (4); Tennis (4).



**ELAINE BREDIN**

Senior Play (4); Road Show (4); A Cappella Choir (4); Central High Players (4); Girls' Senior Glee Club (3).



**ROBERT BONEKEMPER**

**NATIONAL HONOR SOCIETY**

Regiment (1, 2, 3, 4), Captain (4); C.O.C. (4), Vice President (4); Engineers (3,4); Crack Squad (2, 3); Crack Platoon (1,2,3); Senior Play (4); Boys' O-Club (4); Football (1,4); Golf (3); Hi-Y (1,2,3, 4), Vice President (4); Library Monitor (4); Junior Honor Society (2,3); Speakers' Bureau (1).



**BEVERLY BREHM**

Senior Play (4); Central High Players (4); Make-up (4).



**RUTH BOWEN**

Home Economics Club (3,4), President (3); Volleyball (1, 2, 3, 4); Archery (4); Spanish Play (4); Girls' Rifle Team (3,4); Baseball (2,3,4); G.A.A. (3); Basketball (3); Swimming (2); Girls' Senior Glee Club (3); Girls' Junior Glee Club (2).



**JOAN BROAD**

Baseball (1,2,3,4); Hockey (1,2,3, 4); Basketball (1,2,3,4); Swimming (2,3); Tennis (2,3,4); Volleyball (1, 2,3,4); G.A.A. (1,2,3); Girls' Junior Glee Club (2,4); Road Show (3,4).



**HELEN BRADY**

Girls' Senior Glee Club (2,3); Girls' Junior Glee Club (1,2); Senior Play (4).



**BILL BROOKMAN**

Regiment (1,2,3,4), First Lieutenant (4), Engineers (4); C. O. C. Treasurer (4); Track (1,2,4); Basketball (1,2,3,4); Football (1,2,4); Athletic Honor Society (3,4); Boys' O-Club (3,4); Boosters' Club (1,2, 3); French Play (3); Hi-Y (4); Stage Crew (4) Gentlemen's French Club (3,4) Library Monitor (4); Home Room Treasurer (4).



**LOIS BRAY**

Central High Players (4).



**IRENE BUCKLAND**

**NATIONAL HONOR SOCIETY**

Register Staff (4); Quill and Scroll (4); Loquax (4); Library Monitor (4); Junior Honor Society (2,3); Central Colleens (1, 2, 3, 4); Latin Club, President (3); Student Control (3,4); Girls' Natural Science Club (2,3).



**MARGARET BUELL**

Library Monitor (4); Girls' Natural Science Club (3).

**ETTA CAMEL**

Make-up (4); Student Control (3, 4); Central Colleens (1,2); Girls' Natural Science Club (2); Los Sabios (2).



**CHARLOTTE BUETTENBACK**

NATIONAL HONOR SOCIETY

O-Book Staff, Art Editor (4); Greenwich Villagers (2, 3, 4), Vice President (4); Senior Play (4); Central Colleens (1, 2, 3); Junior Honor Society (3); Art Contest (4); National High School Awards (3,4); Road Show, Costumes (4); Road Show Poster Contest (2,3,4).

**JOE CAMERO**



**PAUL BUNCE**

Regiment (1,2,3,4), Second Lieutenant (4); C.O.C. (4); Mathematics Society (4), President (4); Library Monitor (4); Senior Hi-Y (4); Student Control (3); Track (3); Junior Honor Society (2,3); Hi-Y (2); Speakers' Bureau (2); Crack Platoon (2); Swimming (1,2).

**ROSIE CAPLETON**

Girls' Junior Glee Club (4).



**ROBERT BUTTS**

Opera (2,3,4); Road Show (2,3,4); A Cappella Choir (3,4); Boys' Quartette (3,4); National Music Supervisors' Convention (4); Boys' Senior Glee Club (2); Boys' Junior Glee Club (1); State Music Contest (3); Regiment (1).

**MARGARET CARLEY**



**MARION BYRD**

NATIONAL HONOR SOCIETY

Central Colleens (1, 2, 3, 4), Treasurer (4); Senior Play (4); Library Monitor (4); Junior Honor Society (1,2,3); Le Cercle Francais (3, 4); Girls' Natural Science Club (2, 3), President (3); Lininger Travel Club (4); Project Committee (3), President (3); Titians (1, 2, 3, 4), Secretary-Treasurer (2), Vice President (4); Inter-Club Council (1, 2); Girls' Junior Glee Club (1).

**DONALD CARMAN**

Register Staff (4); Loquax Staff (3, 4), Advertising Manager (3), Associate Editor (4); Latin Club (3,4); Discussion Club (3); Library Monitor (4); Tennis (4).





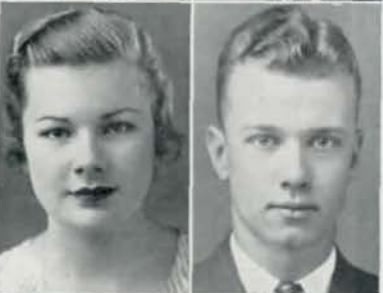
**ROBERT CARROLL**

Boys' O-Club (4); Swimming (4);  
Track (2,3); Basketball (1,2);  
Regiment (1,2).



**JOHN CARTER**

Athletic Honor Society (3,4); Road  
Show (4); Orchestra (4).



**SALLY CARTER**

Senior Play (4); Greenwich  
Villagers (4).



**BERNARD CHAPMAN**

O-Book Staff (4); Library Monitor  
(4); Speakers' Bureau (4); Track  
(2,3,4); Football (1); Crack Platoon  
(2); Regiment (1,2,3).



**LEO CHODAK**

Swimming (3).

**MARY JANE CHRISTOPHER**

NATIONAL HONOR SOCIETY

Register Staff, Editor (4); Loquax  
(3,4); Editor (4); Latin Club (2,3,  
4); Reviewers' Staff (4); Library  
Monitor (2,4); Central Committee  
(2,3,4); Central Colleens (3,4);  
Junior Honor Society (1,2,3); Cen-  
tral High Players (2,3); Girls' Nat-  
ural Science Club (3); Student  
Control (3); Latin Awards (2,4);  
Monitors' Council (4),  
Chairman (4).

**HAROLD CIVIN**

NATIONAL HONOR SOCIETY

O-Book Staff (4); Spanish Paper,  
Editor (3); Los Sabios (2,3,4),  
President (4); Junior Honor Soci-  
ety (1,2,3); Library Monitor (4);  
Spanish Play (4); Student Control  
(3,4); Forensic Society (2,3); Dis-  
cussion Club (3); Regiment (1,2,3,  
4); Secretary, Senior Home  
Room (4).

**DICK CLARKE**

NATIONAL HONOR SOCIETY

Regiment (1,2,3,4), Captain (4); C.  
O.C. (4); Chairman, Senior Home  
Room (4); Library Monitor (4);  
Hi-Y (1,2,3,4), Secretary (4); Gen-  
tlemen's French Club (3,4), Pres-  
ident (4); Monitors' Council (4);  
Central Committee (2,3,4); Road  
Show (2,3,4); Senior Play (4);  
French Play (2,3); Junior Honor  
Society (1,2); Engineers (2,4);  
Crack Squad (2,3); Crack Platoon  
(1); Basketball (1).

**IOLA CLARKE**

Volleyball (1,2,3); Baseball (1,2,3);  
Basketball (1,2,3); Hockey (1,2,3);  
Swimming (1,2,3,4); G.A.A. (1,2,  
3); Student Control (2,3);  
Boosters' Club (1,2).

**DEAN CLUTE**

Student Control (1,3); Track (1,4);  
Regiment (1,2).

**GENE CLUTE**

**LOUISE COOPER**

Home Economics Club (3,4), Vice President (4); Lininger Travel Club (1,2,3); Central Collecens (1,2,3); Gym Club (1,2); G.A.A. (1,2).



**CAROL COCHRAN**

Library Monitor (4); Student Control (2,3,4); Art Contest, Second Prize (4); Girls' Senior Glee Club (3); Girls' Junior Glee Club (2).

**NATHAN COOPER**

Library Monitor (3,4); Mathematics Society (2, 3, 4); Forensic Society (4); Discussion Club (3,4).



**HARRY COHEN**

Los Sabios (2); Basketball (2); Track (4).

**MARVIN CRAWFORD**

Regiment (1,2,3,4), Second Lieutenant (4); C.O.C. (4); Senior Home Room, Sergeant at Arms (4); A Cappella Choir (3,4); Senior Play (4); Biology Round Table (2); Boys' Senior Glee Club (2); Boys' Junior Glee Club (1,2); Swimming (1).



**ETHEL COLE**

O-Book Staff (4).

**NATHAN CROUNSE**

Library Monitor (4); Declamatory Contest (4); Forensic Society (4); Stamp Club (1); Regiment (1); Student Control (4).



**HARRY COOPER**

Register Staff (4); Student Control (2,3,4); Student Control Convention (3); Project Committee (4); National Thespians (4); Central High Players (3,4), Sergeant at Arms (4); "College Widow" (4); "First Night" (3); Library Monitor (3); Boosters' Club (3); Road Show (3); Opera (2).

**LORRAINE DALL**

Central Collecens (4); Swimming (4); G.A.A. (3).







**JANICE DAUGHERTY**

Register Staff, Editor (4); Quill and Scroll (4); Central Colleens (3, 4); Lininger Travel Club (2, 3); Swimming (1); Le Cercle Francais (3,4).

**DOROTHY DORAN**



**ROBERT DAVIDSON**

Boys' O-Club (4); Basketball (3,4); Baseball (4); Road Show (4).

**MARY LOUISE DOW**

Senior Play (4); Road Show (3,4); Library Monitor (4); Le Cercle Francais (4); Lininger Travel Club (2,3); Central Colleens (1,2); Latin Club (2).



**WILLARD DERGAN**

Student Control (4); A Cappella Choir (2,3,4); Orchestra (1,2,3,4); "First Night" (3); Road Show (3); Latin Club (3); Central High Players (3); Atlas Club, President (1); Opera (3).

**HOWARD DREW**

Regiment (1, 2, 3, 4), Captain (4); C.O.C. (4); Engineers (4); Monitors' Council (4); Speakers' Bureau (2,3,4); Library Monitor (4); Senior Play (4); Road Show (3,4); Hi-Y (1, 2, 3, 4); Atlas Club (3); Crack Squad (3); Crack Platoon (1).

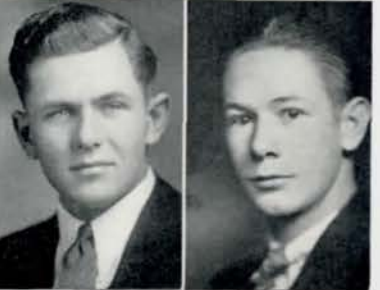


**MARGARET DODDS**

Senior Play (4); Road Show (4); Le Cercle Francais (2,3,4); French Play (3); Girls' Junior Glee Club (1); Mathematics Society (2).

**BETTIE DUFFIELD**

Student Control (4); Girls' Rifle Team (4); Baseball (3,4); Girls' Junior Glee Club (3); Home Economics Club (3,4); Girls' Natural Science Club (2); G.A.A. (1).



**WILLIAM DODDS**

Senior Play (4); Opera (4); Road Show (4); Orchestra (1, 2, 3, 4); President (4); Boys' Senior Glee Club (1,2,3,4); Boys' Junior Glee Club (1); Mathematics Society (3); Los Sabios (3); Boosters' Club (2); Boys' Rifle Team (1,2); Regiment (1,2); Football (1).

**KENNETH DURDEN**

A Cappella Choir (4); Library Monitor (4); National Music Supervisors' Convention (4); Opera (4); Senior Play (4); "College Widow" (4); Student Control (3); Boys' Senior Glee Club (3); Boys' Junior Glee Club (3); Debate (2,3); Swimming (1, 2, 3); Declamatory Contest (2); Forensic Society (2); Regiment (1,2).

**PAUL EBENER**

Baseball (1,2,3), Manager (4); Football (1,2,3); Track (1,2); Basketball (1); Regiment (2,3).

**GEORGE EDGERLY**

## NATIONAL HONOR SOCIETY

Regiment (1, 2, 3, 4), Captain (4); C.O.C. (4); Road Show (4); Engineers (4); Central Committee (3, 4); Speakers' Bureau (4); Boys' O-Club (4); Boys' Junior Glee Club (2); Hi-Y (1,2); Junior Honor Society (1,2); Football (4); Orchestra (1); Crack Platoon (1).

**MERRILL EDGERLY**

O-Book Staff (4); Register Staff (3, 4); Library Monitor (4); "College Widow" (4); Regiment (1,2,3); Crack Platoon (2).

**EUNICE EGGERS**

Boosters' Club (1); Central Colleens (1); Girls' Junior Glee Club (1).

**JANE ELDRIDGE**

Mathematics Society (1,2,3,4), Secretary (2), Treasurer (3); Le Cercle Francais (1, 2, 3, 4), Vice President (4); Lininger Travel Club (1,2,3, 4); Library Monitor (4); Senior Play (4); Road Show (2,3,4); Opera (2,3,4); French Play (3); A Cappella Choir (2,3,4); Girls' Junior Glee Club (1); Girls' Senior Glee Club (2); State Music Contest (2); National Music Supervisors' Convention (2,4).

**ROMA ELLER**

A Cappella Choir (2, 3, 4); Opera (2,3,4); National Music Supervisors' Convention (4); Student Control (3,4); Library Monitor (4); Junior Honor Society (3); Girls' Senior Glee Club (1); Basketball (1).

**JACK ENCELL**

Regiment (1, 2, 3, 4), Captain (4); C. O. C. (4); Senior Home Room Treasurer (4); Boys' Rifle Team (1,2,3,4), Captain (4); Road Show (2,3,4); Engineers (2,4); Hi-Y (3); Biology Round Table (2).

**NORVAL EWING**

Regiment (1,2,3,4), Second Lieutenant (4); C.O.C. (4); Orchestra (1, 2,3,4); Road Show (1,2,3,4); Library Monitor (3,4).

**MARGERY FALES**

Register Staff (4); A Cappella Choir (2,3,4); Opera (2,3); State Music Contest (2,3); Girls' Quartette (3); Student Control (4); Road Show (1); Costumes (2); Los Sabios (3); Greenwich Villagers (2); Central Colleens (1); Stamp Club (1); Girls' Junior Glee Club (1); Swimming (2); Golf (1,2); Library Monitor (4).

**ELIZABETH FAWCETT**

Library Monitor (4); Le Cercle Francais (4); Girls' Junior Glee Club (4); Central Colleens (1,2,3, 4); Student Control (3,4); Girls' Natural Science Club (3).





**NATHAN FELLMAN**

Junior Honor Society (1,3); Library Monitor (4).



**NANCY LEE FERRYMAN**

Swimming (1,2); Girls' Natural Science Club (1).



**SHIRLEY FIEDLER**

Orchestra (1,2,3,4); Library Monitor (4); Student Control (4).



**CHARLOTTE FISHER**

Library Monitor (4); Central Colleens (2,3,4); Los Sabios (3,4); Girls' Junior Glee Club (3); Girls' Natural Science Club (2); Latin Club (2).



**BERNARD FLEMING**

Regiment (1,3,4); Swimming (2); Boys' Senior Glee Club (4); Boys' Junior Glee Club (3).

**DOROTHY FRIEDEL**

Library Monitor (4); Lininger Travel Club (4); Le Cercle Francais (4); Student Control (2,3); Latin Club (2); Junior Honor Society (1,2); Central Colleens (1,2); Girls' Senior Glee Club (1); Girls' Junior Glee Club (1).

**MINDA FRIEDMAN**

Register Staff, Advertising Manager (4); Library Monitor (4); Le Cercle Francais (2,3,4); French Play (2,3); Lininger Travel Club (3); Girls' Junior Glee Club (1).

**MARGARET FRY**

A Cappella Choir (2,3,4), President (4); National Music Supervisors' Convention (4); State Music Contest (2,3); National High School Awards (2,3); Opera (2,3,4); Road Show (2,3,4); Library Monitor (3); Monitors' Council (3); Girls' Senior Glee Club (1); Girls' Junior Glee Club (1).

**RAYMOND FUXA**

Regiment (1,2,3,4); Crack Platoon (2).

**HERBERT GARNER**

O-Club (2,4); Wrestling (2,3,4); Track (3,4).



**MARY HELEN GERVE**

A Cappella Choir (3,4); Opera (2,3); Road Show (4); Senior Play (4); Central High Players (1,2,3,4); "College Widow" (4); Student Control (3,4); Los Sabios (3); Girls' Senior Glee Club (2); Girls' Junior Glee Club (1); Make-up (4).

**SYLVIA GILBERT**

Central Colleens (1,2,3,4), Sergeant at Arms (4); Library Monitor (4); A Cappella Choir (4); Opera (4); Le Cercle Francais (1,2,3,4); French Play (1,2,3,4); Art Contest (2); Girls' Senior Glee Club (1,2,3); Girls' Junior Glee Club (1).

**FRANK GOOS**

Regiment (1,2,3); Loquax (4); Student Control (3,4); Library Monitor (3,4); Junior Honor Society (2).

**FRANCES GORDON**

**NATIONAL HONOR SOCIETY**

Library Monitor (4); A Cappella Choir (3,4); Loquax (2,4); Central Committee (2,3,4); Senior Play (4); Le Cercle Francais (4); Junior Honor Society (1,2,3); Student Control (2,4); French Play (3); Road Show (2); Girls' Junior Glee Club (2); Central Colleens (1,2); Orchestra (1).

**JEROME GORDON**

Football (1,2,3); Track (1,2); Wrestling (1); Speakers' Bureau (2); Regiment (1,2).

**VIRGINIA GOULD**

Sergeant at Arms, Senior Home Room (4); Le Cercle Francais (4); Central Committee (2,3,4); Girls' Natural Science Club (2).

**DOROTHY GRAHAM**

Central Colleens (1,2,3,4); Girl Reserves (1,2,3,4), President (4); Girl Reserve Interclub Council (2,3,4), President (4); Library Monitor (4); Der Deutsche Verein (2,3), President (3); Senior Play (4).

**WILLIAM GRAY**

**NATIONAL HONOR SOCIETY**

Register Staff (4); Quill and Scroll (4); Library Monitor (4); Boys' Senior Glee Club (3,4); Boys' Junior Glee Club (1,2); Junior Honor Society (1,2,3).

**DOROTHY GREEN**

Girls' Natural Science Club (3,4); Library Monitor (4); Make-up (3); Home Economics Club (3,4), Secretary (4); Student Control (2); G.A.A. (1).

**FRANK GREER**

Regiment (1,2,3,4); First Lieutenant (4); Engineers (3); Register Staff (3); Opera (1,2,3,4); National Music Supervisors' Convention (4); Boys' Senior Glee Club (1); Boys' Junior Glee Club (1); A Cappella Choir (2,3,4); Library Monitor (3,4); Road Show (4); Senior Play (4); French Play (4); Make-up (4); Stamp Club (1).



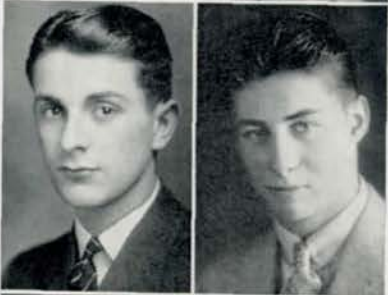


**ELEANOR GREUSEL**

O-Book Staff, Associate Editor (4); Register Staff (4); Central High Players (4); Opera (4); Girls Senior Glee Club (4); Girls' Junior Glee Club (1,3); Boosters' Club (2); Girls' Natural Science Club (3).

**BILL HART**

Senior Home Room Sergeant at Arms (4); Senior Play (4).



**GERALD GROSS**

Spanish Play (4); Stage Crew (1).

**JACK HART**



**ROBERT HAMILTON**

Football (1,2,3,4); Basketball (2); Opera (3); Boys' Senior Glee Club (3); Opera (3); Regiment (1,2).

**MARY HASSERT**

Senior Play (4); G.A.A. (1,2,3,4); Baseball (1, 2, 3); Tennis (1, 2, 3); Basketball (1,2,3,4); Volleyball (1, 2,3,4); Hockey (1,2,3); Swimming (1,2); Girls' Rifle Team (4); Road Show (1, 2); Girl Reserves (3, 4); Central Colleens (1); Orchestra (1,2).



**DONALD HANSEN**

Student Control (4); National Music Supervisors' Convention (4); Opera (3,4); A Cappella Choir (3, 4); Boys' Junior Glee Club (2); Regiment (1,2).

**SUMNER HAYWARD**

Regiment (1,2,3,4), First Lieutenant (4); C.O.C. (4); Library Monitor (4); A Cappella Choir (3); Boys' Senior Glee Club (1,2); Boys' Junior Glee Club (1); Opera (2); Senior Play (4); Hi-Y (1,2,3,4); Gentlemen's French Club (3,4); Latin Club (2).



**DONALD HARRISS**

Regiment (1,2,3); A Cappella Choir (3); Boys' Junior Glee Club (2); Wrestling (3).

**ROBERT HEBERT**

Cheerleader (2,3); Athletic Manager (1, 2); Track (1, 2, 3, 4); Golf (4); Swimming (2,3); Baseball (1); Speakers' Bureau (2,3,4); Gentlemen's French Club (3,4); Student Control (3); Regiment (1,2); Central High Players (3).

### HALCYON HENSHAW

### FRANCIS HESLER

National Music Supervisors' Convention (4); State Music Contest (3,4); District Music Contest (3,4); Opera (2,3,4); A Cappella Choir (3,4); Football (1,2,3,4); Wrestling (3); Track (2); Boys' O-Club (3,4); Road Show (3); Mixed Quartette (2); Boys' Senior Glee Club (2); Boys' Junior Glee Club (1); Student Control (3,4); Regiment (1,2); Boys' Quartette (2,3,4).

### JEROME HIRSCHMANN

Los Sabios (2,3); Debate (3); Basketball (2); Regiment (1,2).

### GEORGE HOLCOMB

Regiment (1,2,3,4), First Lieutenant (4); C.O.C. (4); Crack Platoon (1,2); Boys' O-Club (2,3,4); Library Monitor (4); Track (1,4); Swimming (2,3); Basketball (1,2); Football (1).

### WILLIAM HOLLAND

#### NATIONAL HONOR SOCIETY

Regiment (1,2,3,4), First Lieutenant and Adjutant (4); C.O.C. (4); O-Book Staff (4); Road Show (4); Gentlemen's French Club (3,4); Student Control (3,4); Senior Play (4); Engineers (4); Junior Honor Society (2,3); Latin Club (2,3); Hi-Y (4); Forensic Society (3); Speakers' Bureau (2); Basketball (2); Stamp Club (1).

### MARIAN HOLLCROFT

Student Control (4); Library Monitor (4); Der Deutsche Verein (2,3); Secretary-Treasurer (3); Central Colleens (1).

### ELIZABETH HOLMAN

O-Book Staff (4); Opera (4); A Cappella Choir (3,4); National Music Supervisors' Convention (4); Library Monitor (4); Lininger Travel Club (4); Central Colleens (1,2); Spring Concert (2); Ping-Pong Tournament (2); Girls' Junior Glee Club (1); Girls' Senior Glee Club (2).

### ELAINE HOLMSTROM

#### NATIONAL HONOR SOCIETY

Junior Honor Society (1,2,3); Central Committee (2,3,4); Central Colleens (1,2,3,4); Mathematics Society (2,3); Road Show (3,4); Orchestra (3,4); Secretary (4); Tennis (3,4), Team (3); Library Monitor (3,4); Girl Reserves (3,4).

### ROSEMARY HOMANN

Road Show (3,4); Le Cercle Francais (3); French Play (3).

### PHYLLIS HOPKINS

Central High Players (3,4), Sergeant at Arms (4); National Thespians (4); Road Show (2,3,4); Opera (2,3,4); Make-up (2,3); Senior Play (4); "College Widow" (4); "First Night" (3); French Play (3); Library Monitor (4).







**ANNE HOREJS**

Central High Players (3,4); Girls' Senior Glee Club (3,4); G. A. A. (4); Library Monitor (4); Baseball (1,4); Swimming (2,4); Basketball (4); Home Economics Club (3); Hockey (2); Girls' Junior Glee Club (2).

**VIRGINIA HUNTINGTON**

Girls' Natural Science Club (2); Junior Honor Society (1).



**LAURA HOWLEY**

Library Monitor (4); Tennis (1,2,4); Central Colleens (1,2); Girl Reserves (2); Baseball (1); Hockey (1).

**EUGENE HURTZ**

Regiment (1,2,3,4), Second Lieutenant (4); C.O.C. (4); Junior Honor Society (1,2,3); Library Monitor (4); Mathematics Society (3,4); Sergeant at Arms (4); Hi-Y (1,2,3,4).



**MAXINE HUBBARD**

A Cappella Choir (2,3,4); Senior Glee Club (1); Student Control (1); Opera (1); Senior Play (1); "Moonshine and Honeysuckle" (4); Girls' Junior Glee Club (1).

**CHARLES HUTTER**

Boys' O-Club (3,4); Tennis (4); Swimming (3); Junior Honor Society (3); Senior Play (4); Laboratory Assistant (3,4).



**MARGARET HULTMAN**

**NATIONAL HONOR SOCIETY**

Register Staff (4); Quill and Scroll (4); Senior Play (4); Library Monitor (4); Central High Players (4); Latin Club (3,4), Vice President (3), President (4); Central Colleen (1,2,3,4); Basketball (4); Junior Honor Society (3); Lininger Travel Club (3); Student Control (3); Girls' Senior Glee Club (2,4); Loquax (3,4); Girls' Junior Glee Club (2); Tennis (2).

**ROLAND HYDE**

Basketball (1,2); Student Control (1).



**PEGGY HUNTER**

Central Colleens (4); Student Control (4); Costumes (4); Girls' Junior Glee Club (3); Make-up (2).

**ALICE INDOE**

Senior Home Room Treasurer (4); Senior Play (4); Road Show (4); Library Monitor (4); Greenwich Villagers (3,4), President (4); Lininger Travel Club (1,2,3), Sergeant at Arms (3); Monitors' Council (4); Central Committee (2,3,4); Le Cercle Francais (3); Loquax (2); Girls' Junior Glee Club (1).

**FRANCES JENSEN**

Central Colleens (3); Library Monitor (4); Junior Honor Society (3).

**KATHRYN KAVAN**

O-Book Staff (4); Greenwich Villagers (2,3,4); Girls' Junior Glee Club (4); Library Monitor (4); Central Colleens (2).



**DOROTHEA JOHNSON**

O-Book Staff (4); Greenwich Villagers (4); Library Monitor (4); Student Control (3,4); Central Colleens (2).

**ELEANOR KENNEDY**

Register Staff (4); Road Show (4); G.A.A. (3,4); Hockey (3,4), Captain (4); Baseball (3,4); Basketball (4); Volleyball (4); Girls' Archery Team (4); Student Control (3,4); Titians (3,4); Library Monitor (4).



**RUTH JONES**

**NATIONAL HONOR SOCIETY**

O-Book Staff, Editor (4); Register Staff (4); Quill and Scroll (4); Secretary, Senior Home Room (4); Junior Honor Society (3); Library Monitor (4); G.A.A. (2,3,4); Hockey (2,3,4); Tennis (2); Baseball (2,3); Volleyball (1,2,3); Ping Pong Tournament (2); Los Sabios (2).

**BRUCE KENNY**

Regiment (1,2,3,4), Second Lieutenant and Quartermaster (4); C.O.C. (4); Engineers (3); Senior Play (4); Hi-Y (4); Central Committee (3,4); Biology Round Table (2); Latin Club (1,2); Stamp Club (1,2).



**THOMAS JONES**

A Cappella Choir (2,3,4); State Music Contest, First Place (3); National Music Supervisors' Convention (4); Road Show (4); Orchestra (4); Boys' Junior Glee Club (1); Track (3); Football (3).

**BETTY KITCHEN**

Central Committee (3,4); Le Cercle Francais (3,4); Liminger Travel Club (3); Senior Play (4); Library Monitor (4); Road Show (3).



**SARAMARA KATSKEE**

Central Colleens (4); Student Control (4); Senior Play, Costumes (4); "Moonshine and Honeysuckle," Costumes (4).

**MARIE KLAMMER**

Library Monitor (4); Le Cercle Francais (4); Central Colleens (4).





**PHYLLIS KNUDSEN**

O-Book Staff (3,4); Greenwich Vil-  
lagers (2,3,4); Library Monitor (4);  
Central Colleens (2,3).

**RICHARD LAVERTY**

A Cappella Choir (3,4); Opera (2);  
Boys' Senior Glee Club (2); Boys'  
Junior Glee Club (1,2); Student  
Control (2,3); Football (2,3); Track  
(3); Golf (1); Regiment (1,2,3,4).



**DOROTHY KOSER**

Loquax (4).

**MORRIS LERNER**

**NATIONAL HONOR SOCIETY**

Register Staff (3,4), News Editor  
(3), Editor (4); O-Book Staff (3);  
Quill and Scroll (3,4); Drake Uni-  
versity Journalism Honor Scholar-  
ship (3); Representative Nebraska  
State Press Convention (4); Senior  
Play (4), Business Manager (4);  
"Moonshine and Honeysuckle" (4);  
"College Widow," Advertising Man-  
ager (4); Opera (4); Central High  
Players (4); National High School  
Awards (3,4), Junior Honor Soci-  
ety (1,2,3); Boys' Junior Glee Club  
(4); Student Control (3); Forensic  
Society (2,3); Library Monitor  
(3); Commercial Awards (4).



**RUTH KUEHL**

G.A.A. (1, 2, 3, 4), Secretary (4);  
Baseball (1,2,3,4), Captain (3); Bas-  
ketball (2,3,4), Captain (4); Hockey  
(2,3,4); Volleyball (2,3,4); Archery  
(4); Library Monitor (4); Central  
Colleens (1,2,3); Home Economics  
Club (4); Road Show (4).

**PAUL LIMA**

Swimming (1,2,3,4), Captain (4),  
Manager (4); Boys' O-Club (2,3,4);  
Track (3); Central High Players  
(2,3,4); "First Night" (3); Road  
Show (4); Library Monitor (4);  
Speakers' Bureau (3); Boosters'  
Club (2); Swimming Pageant (2,4).



**DOROTHY KULAKOFSKY**

**NATIONAL HONOR SOCIETY**

Register Staff (4); Quill and Scroll  
(4); Le Cercle Francais (4); Li-  
brary Monitor (4); Junior Honor  
Society (1,2,3); Latin Club (2,3),  
Sergeant at Arms (3); Lininger  
Travel Club (3); Student Control  
(3); Central Colleens (1,2); Girls'  
Junior Glee Club (2); Central High  
Players (1); "Daddy Long-Legs"  
(1).

**DOROTHY LINDQUIST**

Central Committee (2,3,4); Le Cer-  
cle Francais (3,4); Girls' Junior  
Glee Club (1,4); Lininger Travel  
Club (2); Girls' Senior Glee Club  
(2); Central High Players (2);  
French Play (2,3,4); Senior Play  
(4); Road Show (2,3).



**DOROTHY LARSON**

Library Monitor (4); Student Con-  
trol (2).

**JACQUELINE LIPP**

O-Book Staff (4); Student Control  
(3,4); Library Monitor (4); Girls'  
Natural Science Club, Sergeant at  
Arms (3); Central Colleens (3).



**HARRY LIVERMORE**

Regiment (1,2,3,4), Captain and Adjutant (4); C.O.C. (4); Engineers (4); Crack Squad (3); Spanish Play (4); Spanish Paper (3); Los Sabios (2,3); Central Committee (3,4); Road Show (3); Hi-Y (1,2,3,4), Vice President (4); Swimming (1,2,3); Basketball (1,2,3); Golf (3); Football (1); Speakers' Bureau (1).

**JANE LOCKE**

NATIONAL HONOR SOCIETY

Central Committee (3,4); Lininger Travel Club (3,4); Girls' Junior Glee Club (3); Spanish Play (4); Spanish Paper, Business Manager (2,3); Los Sabios (1,2); Swimming (1).

**RICHARD LOHSE**

Football (1,2,3,4); Baseball (1,2,4); Track (3); Make-up (4); Stage Crew (4).

**LUCILLE LUNDELL**

Opera (2,4); Road Show (1,4); Make-up (4); A Cappella Choir (3); Volleyball (3); Los Sabios (3); Girls' Senior Glee Club (2); Girls' Junior Glee Club (2).

**DOROTHY LUSH**

Senior Play (4); Spanish Play (4); Home Economics Club (3); Los Sabios (3); Mathematics Society (3); Central High Players (2); Costumes (2); Girls' Senior Glee Club (2); Girls' Junior Glee Club (1).

**GORDON MACALISTER**

NATIONAL HONOR SOCIETY

O-Book Staff (4); Register Staff (3,4), Make-up Editor (3); Editor (4); Loquax (4); Library Monitor (4); Quill and Scroll (3,4); Junior Honor Society (3); Forensic Society (1); Regiment (1,2).

**BEN MAGZAMIN**

Der Deutsche Verein (2).

**MARTHA MAJOR**

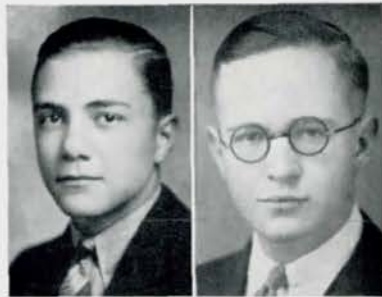
Library Monitor (4); Student Control (4); Central Colleens (4); Girls' Junior Glee Club (4).

**MARIE MANCUSO**

Student Control (4); Senior Play (4); Make-up (1); Central Colleens (1); Los Sabios (2).

**HELEN MANOLI**

Road Show (4); Swimming (2).





**MARY FRANCES  
MARCONIT**

**NATIONAL HONOR SOCIETY**

National Thespians (4); O-Book Staff (4); Register Staff (3,4); Junior Honor Society (1,2,3); Quill and Scroll (3,4); Central Colleens (1,2,3,4); Student Control (1,2,3,4); Central High Players (3,4); Senior Play (4); Road Show (4); Make-up (4); Le Cercle Francais (3); Student Control Convention (4); G.A. A. (1,2); Boosters' Club (1,2); French Play (2); Swimming (1,2,3); Basketball (2); Hockey (2); "College Widow" (4); Volleyball (1,2); "First Night" (3); Health Pageant (4); Spanish Play (4).



**VIVIAN MARR**

Student Control (2,3,4); Opera (3,4); Central High Players (3,4); Speakers' Bureau (4); Mathematics Society (2,3); Boosters' Club (2); "First Night" (3); Road Show (2); Forensic Society (3).



**JOE MATTES**

Regiment (1,2,3,4), Second Lieutenant (4); C.O.C. (4); Chairman Senior Home Room (4); Register Staff (4); Sports Editor (4); Quill and Scroll (4); Hi-Y (1,2), President (2); Central Committee (2,3), Sergeant at Arms (3); Stage Crew (4); Library Monitor (4); Latin Club (2); Junior Honor Society (1).



**KEITH MAXWELL**

Regiment (1,2,3,4), Second Lieutenant and Quartermaster (4); C.O.C. (4); Monitors' Council (4); Library Monitor (4); Senior Play (4); Latin Club (3); Biology Round Table (2); Junior Honor Society (1).



**JOE MAZZERI**

Baseball (1,2,3,4); Football (1,2,3,4); Basketball (1,2,3,4); Boys' O-Club (3,4); Athletic Manager (4); Boys' Junior Glee Club (2).

**EDNA McCARGAR**

**JEAN McCLENEGHAN**

Le Cercle Francais (4); Student Control (4); Library Monitor (4); Linger Travel Club (3); Central Colleens (2); Girls' Natural Science Club (2); Loquax (3).

**ROBERT McClURG**

Regiment (1,2,3,4), First Lieutenant (4); C.O.C. (4); Engineers (3); Crack Platoon (3); Football (1,2,3,4); Wrestling (2,3); Track (2); Stage Crew (4).

**DOROTHY McDONALD**

**NATIONAL HONOR SOCIETY**

Junior Honor Society (1,2,3); Loquax (2,3,4); Library Monitor (4); Latin Club (2,3,4); Central Colleens (1,2,3,4); Student Control (2,3,4); Latin Awards (2); Mathematics Society (2).

**DIXIE McINTOSH**

**ROBERT McMANUS**

Senior Play (4); Library Monitor (4); French Play (3); Gentlemen's French Club (4); Mathematics Society (3).

**ELEANOR MEYERS**

National Music Supervisors' Convention (4); A Cappella Choir (2,3,4); Library Monitor (4); French Play (3); Road Show (3); Le Cercle Francais (3); Student Control (1,2); State Music Convention (1); Opera (2).



**MARGUERITE MEAD**

National Music Supervisors' Convention (4); A Cappella Choir (2,3,4); Library Monitor (4); Opera (3,4); Girls' Junior Glee Club (1); G.A.A. (1).

**CLAIRE MILLER**

Discussion Club (3,4), Vice President (4); Debate (3,4); Declamatory Contest (3); Greenwich Villagers (3); Forensic Society (3); Central Colleens (1,2); G.A.A. (1).



**MARILYN MILLMAN**

**NATIONAL HONOR SOCIETY**

Senior Play (4); Central Colleens (1,2,3,4); Student Control (2,3,4); Girls' Natural Science Club (3,4); Junior Honor Society (1,2); Discussion Club (1).



**GLORIA MEADOWS**

**WEB MILLS**

Senior Play (4); Library Monitor (4); Stage Crew (4); Latin Club (2,3,4); Loquax (3); Mathematics Society (2,3,4); Speakers' Bureau (4); Student Control (3); Atlas Club (1,2); Boosters' Club (1); Junior Honor Society (1).



**MARION MERCHANT**

Library Monitor (4); Home Economics Club (3,4), President (4).

**FENA MILONI**

Spanish Play (4); El Heraldo, Assistant Editor (3); A Cappella Choir (4); Student Control (3,4), Vice President (4); Los Sabios (2,3,4), Vice President (4); Opera (3); Girls' Senior Glee Club (2,3); Girls' Junior Glee Club (1); Tennis (1,2); Golf (1,2).



**HARRY MEYER**

Student Control (4).





**ISADORE MITTLEMAN**

Library Monitor (4); Senior Play (4); Speakers' Bureau (3,4); Boys' Junior Glee Club (1,3,4); Forensic Society (1,2); Biology Round Table (1,2); Latin Club (2).



**HELEN MOELLER**

NATIONAL HONOR SOCIETY

O-Book Staff (4); Register Staff (2); Advertising Manager (4); Quill and Scroll (4); Library Monitor (4); Senior Play (4); Le Cercle Francais (3,4); Secretary (4); Junior Honor Society (3); French Play (3).



**SYLVIA MONOVITZ**

Central Colleens (4); Student Control (3,4).



**TIMOTHY MORIARTY**

Regiment (1, 2, 3, 4); Crack Squad (3,4); Crack Platoon (2); Football (1,3,4).



**IVORY LEE MOORE**

Girls' Junior Glee Club (1,4).

**MARGARET MORAN**

NATIONAL HONOR SOCIETY

O-Book Staff, Associate Editor (4); Register Staff (4); Quill and Scroll (4); Loquax, Associate Editor (4); Latin Club (3,4), Vice President (4); Girls' Natural Science Club (2, 3); A Cappella Choir (4); Library Monitor (4); Junior Honor Society (1,2); National Music Supervisors' Convention (4).

**CONSTANCE MORRISON**

Make-up (2).

**EDWARD MULLEN**

O-Book Staff (3,4); Register Staff (4); Library Monitor (4); Central High Players (3,4), Vice President (4); Road Show (3); Senior Play (4); "First Night" (3); "Moonshine and Honeysuckle" (4); "The College Widow" (4); Senior Art (3,4); Art Contest (4); Make-up (3); National Thespians (4), President (4).

**CATHERINE MUNKHOF**

O-Book Staff (4); Library Monitor (4); Greenwich Villagers (4); Central Colleens (2,3); Atlas Club (2).

**LEIGHTON NASH**

O-Book Staff (4); Register Staff (4); Quill and Scroll (4); Library Monitor (4); Loquax (4); Gentlemen's French Club (3,4); Biology Round Table (1,2); Atlas Club (1, 2); Junior Honor Society (1,2); Regiment (1,2,3).

**DOROTHY NELSON**

Student Control (3,4); Swimming (2,3).

**CLIFFORD NORGARD**

Wrestling (3,4); Football (2,3); Regiment (1).



**MARY ALICE NELSON**

NATIONAL HONOR SOCIETY

Student Control (2,3,4); Central High Players (2,3,4); Road Show (1,4); "First Night" (3); Linger Travel Club (3); French Play, Costumes (3).

**BESS NORRIS**

Student Control (3,4); Girls' Junior Glee Club (3); Girl Reserves (3).



**RUTH NEWELL**

Road Show (4); Le Cercle Francais (3).

**MARY NUSSRALLAH**

Register Staff (4); Library Monitor (4); Central Colleens (3,4).



**ROBERT NIEMAN**

Library Monitor (4); Speakers' Bureau (4); Gentlemen's French Club (4); Regiment (1,2,3,4).

**ROSEMARY OEHRLE**

Student Control (4); Road Show (2); Make-up (2); Titians (1); Greenwich Villagers (1).



**VIRGINIA NOBLE**

Los Sabios (3,4); Spanish Play (3,4); Library Monitor (4); Girls' Junior Glee Club (4); Project Committee (1,4).

**NORMAN OGILVIE**

NATIONAL HONOR SOCIETY

Regiment (1,2,3,4), Major (4); C. O.C., President (4); Engineers (4); Monitors' Council, Chairman (4); Library Monitor (4); Road Show (3,4), Manager (4); Track (1,2,3,4), Captain (3); Football (1,2,3,4); Basketball (1,2); National Athletic Honor Society (3,4); Crack Squad (2); Gentlemen's French Club (4); Mathematics Society (2); Hi-Y (2); Boosters' Club (1,2).





**BETTY O'GRADY**

Library Monitor (4); Latin Club (2); Central Colleens (1).

**HOWARD PATTEN**

Regiment (1, 2, 3); Track (2, 3, 4); Basketball (2).



**JOHN OSBORN**

NATIONAL HONOR SOCIETY

Wrestling (4); Track (4); Football (4); Boys' O-Club (4); Road Show (4); Regiment (1).

**GRETCHEN PATTERSON**

Student Control (2,4); Girls' Senior Glee Club (4); Library Monitor (4); Opera (4); Girls' Junior Glee Club (3); Latin Club (2).



**MELVIN OSBORNE**

NATIONAL HONOR SOCIETY

Regiment (1,2,3,4), Second Lieutenant (4); C. O. C. (4); Loquax (4); Junior Honor Society (1,2,3); Student Control (2,3,4); Hi-Y (1, 2,3,4); Latin Club (3,4); Opera (3, 4); Road Show (4); Senior Play (4); A Cappella Choir (4); Boys' Junior Glee Club (3); Boys' Senior Glee Club (3); Latin Awards (3); Biology Round Table (2).

**ANN PATTON**

Le Cercle Francais (4); Stagecraft (4); Girls' Senior Glee Club (3); Girls' Junior Glee Club (3); Girls' Natural Science Club (2).



**HERBERT PALMER**

Regiment (1,2).

**LAWRENCE PECKHAM**

Orchestra (1,2,3,4); Library Monitor (4); Stamp Club (1,2); Inter-Club Council (1); Regiment (1,2).



**STEWART PASCALE**

Regiment (1); Engineers (3).

**STANLEY PEDERSON**

Library Monitor (4); Junior Honor Society (2,3); Student Control (3); Project Committee (2); Inter-Club Council (2).



**HAROLD PEERY**

Regiment (1, 2, 3, 4), Second Lieutenant (4); C.O.C. (4); Junior Honor Society (2).

**DOROTHY PERKINS**

Student Control (4); Junior Honor Society (3).

**MICHAEL PETROVICH**

**MYRA ROSE PIESCH**

Library Monitor (4); Senior Play (4); Home Economics Club (4); Der Deutsche Verein (2,3); Swimming (3).

**JOE PILLING**

Regiment (1,2,3,4), First Lieutenant (4); C.O.C. (4); Engineers (3, 4); Crack Squad (3); O-Book Staff (4); Library Monitor (4); A Cappella Choir (3, 4); Boys' Senior Glee Club (3); Boys' Junior Glee Club (1,2), Vice President (2); Opera (2); Mathematics Society (2,3, 4), President (4); Central Committee (3,4); Junior Honor Society (1); Road Show (3,4); Gentlemen's French Club (3); Hi-Y (2,3,4); Atlas Club (2); Stamp Club (2); Basketball (1).

**JACK POLCAR**

Atlas Club (2); Student Control (3).

**GEORGE POLYZOIS**

Regiment (1, 2, 3, 4), Second Lieutenant (4); C. O. C. (4); Library Monitor (4); A Cappella Choir (3, 4); Boys' Senior Glee Club (2); Boys' Junior Glee Club (1), President (1); Opera (3,4); Road Show (3,4); Speakers' Bureau (2,4); Los Sabios (4); Basketball (2); Football (1).

**THOMAS POLYZOIS**

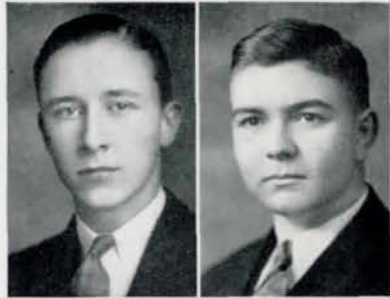
Regiment (1,2,3); Junior Hi-Y (2); Football (1,2); Basketball (1); Track (1).

**FRANK POWELL**

Regiment (1, 2, 3, 4), Second Lieutenant (4); C. O. C. (4); Junior Honor Society (1,2,3); Student Control (3).

**ROBERT PRENTISS**

Register Staff (3); Latin Club (2, 3); Tennis (2,3); Cheerleader (3); Student Control (3); Regiment (1,2).





**MARY LOUISE PRICHARD**

Central Colleens (3,4); Le Cercle  
Francais (4); Senior Play (4);  
Library Monitor (4).

**FREDERICK REIMERS**

Regiment (1,2,3,4); Crack Squad  
(4); Tennis (3,4); Swimming (1,2,  
3,4); Road Show (4); Boys'  
O-Club (3,4).



**JOHN QUADY**

Regiment (1,2,3,4), First Lieuten-  
ant (4); C.O.C. (4); Engineers (3,  
4); Crack Squad (2,3); Road Show  
(2,3,4); Hi-Y (3,4).

**ETHEL RESNICK**

**NATIONAL HONOR SOCIETY**

A Cappella Choir (3,4); National  
Music Supervisors' Convention (4);  
Opera (4); Girls' Junior Glee Club  
(2); Junior Honor Society (1,2,3);  
Library Monitor (4); Student Control  
(4); Central Colleens (1,2,3,4);  
Latin Awards (2); Girls' Natural  
Science Club (2).



**JAMES RAMSEY**

O-Book Staff (4); Basketball (1,2,  
3,4); Football (1,2,3); Golf (1,2,3,  
4); Tennis (1,2,4); Baseball (1,2);  
Track (1); Regiment (1,2); Crack  
Platoon (2); Orchestra (1);  
Mathematics Society (1).

**RONALD REUBEN**

Mathematics Society (2,3,4), Vice  
President (4); Library Monitor  
(4); Forensic Society (3); Junior  
Honor Society (1); Road Show  
(2); Regiment (1,2,3).



**HARDING REES**

**NATIONAL HONOR SOCIETY**

Regiment (1,2,3,4), Second Lieuten-  
ant (4); C.O.C. (4); Crack Platoon  
(2); Loquax (3); State Music  
Contest (3,4); M-I-N-K Contest  
(4); Orchestra (1,2,3,4, President  
(4); Road Show (3,4); French  
Play (2,3).

**MARGARET RHOADS**

Boosters' Club (2,3); Project Com-  
mittee (2,3); Girls' Senior Glee  
Club (3); Girls' Junior  
Glee Club (1,2).



**PAUL REICHSTADT**

Der Deutsche Verein (2); Regiment  
(1,2).

**ARTHUR RINSCHEN**

Student Control (2,4); Wrestling  
(2).

**BETTY ROBERTSON**

Library (4); Student Control (4);  
Central Colleens (2,3,4);  
Los Sabios (3).

**HENRY ROSENBAUM**

Senior Home Room Chairman (4);  
Boys' O-Club (2,3,4); Track (1,2,  
3,4); Football (1,2,3,4); Basketball  
(1,2,3,4); Road Show (4).



**WILLIAM ROSENBAUM**

NATIONAL HONOR SOCIETY

O-Book Staff, Business Manager  
(4); Register Staff (4); Quill and  
Scroll (4); Library Monitor (4);  
Forensic Society (1,2,3); Discussion  
Club (4); Junior Honor Society  
(2); Biology Round Table (1,2);  
Regiment (1,2).



**ELIZABETH ROBINSON**

A Cappella Choir (4); Girls' Senior  
Glee Club (3); Girls' Junior Glee  
Club (1,2).

**MELVIN ROSENBERG**

A Cappella Choir (3,4); Opera (3,  
4); Boys' Senior Glee Club (3);  
Boys' Junior Glee Club (2).



**MARCUS ROBY**

Tennis (4).

**PHILIP ROSENBERG**

O-Club (4); Football (2,3,4); Road  
Show (4); Basketball (1,2,3); Base-  
ball (1); Regiment (1,2,3).



**ROBERT RODWELL**

Regiment (1, 2, 3, 4), Captain and  
Quartermaster (4); C. O. C. (4);  
Crack Squad (3); Engineers (4);  
National Athletic Honor Society (3,  
4); Track (1,2,3,4); Hi-Y (3,4); Li-  
brary Monitor (4); Mathematics So-  
ciety (3,4); Road Show (3);  
Loquax (2); Latin Club (2).

**EDWARD ROSEN**

Library Monitor (4); Speakers' Bu-  
reau (3,4).

**FRANCES ROSENFELD**

Linger Travel Club (2,3,4); Cen-  
tral Colleens (3,4); Library Monitor  
(4); Junior Honor Society (1,3);  
Girls' Junior Glee Club (1,2).







**CHRISTINE ROSS**

Register Staff (4); Library Monitor (4); Los Sabios (4); Student Control (4); Titians (1, 2, 3, 4); Girls' Natural Science Club (2,3); Inter-Club Council (2); Boosters' Club (2).

**JUNE SANQUIST**

Opera (4); Discussion Club (4); Ping Pong Tournament (4); Road Show (4); A Cappella Choir (4); Library Monitor (4).



**LOUISE ROTHKOP**

Central High Players (4); "Patsy" (2); "First Night" (3); "College Widow" (4); Senior Play (4); Library Monitor (4); Road Show (2, 3); Student Control (4); Speakers Bureau (4); Opera (3,4); G.A.A. (1, 2, 3); Sergeant at Arms (3); Baseball (1,2,3); Hockey (1,2,3); Basketball (1,2,3); Swimming (2).

**MARGARET SANTON**

G.A.A. (1,2,3,4); Gym Club (1,2); Baseball (1,2,3); Swimming (2,3,4); Hockey (1,2,3); Volleyball (1,2,3); Basketball (1,2,3); Orchestra (1,2,3, 4); Road Show (4).



**HAROLD ROW**

**NATIONAL HONOR SOCIETY**

Regiment (1, 2, 3, 4); Second Lieutenant (4); C. O. C. (4); Crack Squad (3); Boys' Rifle Team (4); Library Monitor (4); Mathematics Society (3,4); Secretary (4); Hi-Y (3,4); Road Show (3,4); Track (3); Art Contest (2); Boosters' Club (2).

**RAY SCHAPIRO**

Register Staff (4); Student Control (4); Commercial Awards (3); Gym Club (3); Track (2,3); Biology Round Table (2).



**ANTHONY SALERNO**

Library Monitor (4); Los Sabios (4).

**EDITH SCHNEIDER**

O-Book Staff (4); Register Staff (4); Quill and Scroll (4); Library Monitor (4); "College Widow" (4); Central High Players (4); Central Colleens (1,2,3,4); Student Control (3,4); Girls' Natural Science Club (2,3); Swimming (2).



**EDWIN SANDHAM**

**NATIONAL HONOR SOCIETY**

Regiment (1, 2, 3, 4); Second Lieutenant (4); C.O.C. (4); Boys' Rifle Team (4); Junior Honor Society (1, 2, 3); Library Monitor (4); Mathematics Society (3,4); Vice President (4).

**LEFA SCHRYVER**

Library Monitor (4); Central High Players (4); Junior Honor Society (1,3); Home Economics Club, Treasurer (3); Senior Play (4).

**JACK SCHWARTZ**

Boys' O-Club (3,4); Track (2,3,4); Football (3); Stage Crew (4); Regiment (1).

**BERNICE SESSEL**



**NATHAN SCOTT**

O-Club (4); Football (1, 2, 3, 4); Wrestling (2,3,4); Track (2); Property Manager, "College Widow" (3); Regiment (1,2).

**LOUISE SHERIDAN**

Central Colleens (4); Student Control (4); Girls' Junior Glee Club (1); Stage Crew (4).



**YSOBEL SCOTT**

A Cappella Choir (4); Central High Players (3,4); Make-up (4); Lininger Travel Club (3); "College Widow," (4); National Thespians (4).

**BEVERLEY SHIELDS**

Titians (3,4); Central Colleens (3, 4); Student Control (3,4); Library Monitor (4); Senior Play (4); Swimming (3).

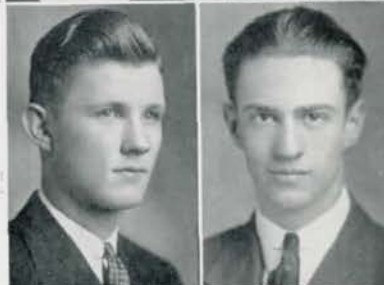


**FRANK SEARS**

Regiment (1, 2, 3, 4), Captain and Ordnance (4); C.O.C. (4); Engineers (4); Crack Squad (3); Crack Platoon (3); Senior Play (4); French Play (2,3,4); Road Show (3); Central Committee (3,4), Sergeant at Arms (3), Secretary-Treasurer (4); Gentlemen's French Club (4); Speakers' Bureau (4); Hi-Y (1,2,3,4), Secretary (4), President (4); Golf (3,4); Basketball (1,2); Football (1).

**CLAUDE SHOEMAKER**

A Cappella Choir (2, 3, 4); Opera (2,4).



**VANCE SENTER**

**NATIONAL HONOR SOCIETY**

Regiment (1, 2, 3, 4), Second Lieutenant (4); C. O. C. (4); Junior Honor Society (1,2,3); Sergeant at Arms, Senior Home Room (4); Monitors' Council (4); Library Monitor (4); Orchestra (4); Gentlemen's French Club (4); Inter-Club Council (2); Student Control (2); Road Show (2,3,4); Speakers' Bureau (3); Atlas Club (3), Secretary (3); Latin Club (2); Biology Round Table (2).

**MARGARET SKOW**

Library Monitor (4); Latin Club (3); Student Control (3); Girls' Junior Glee Club (3).





**BERTHA SLUTSKY**

NATIONAL HONOR SOCIETY

O-Book Staff, Associate Editor (4); Quill and Scroll (4); Register Staff (4); Library Monitor (3,4); Monitors' Council (4); Reviewers' Staff (4); Junior Honor Society (1,2,3); Central High Players (3,4); "The College Widow" (4); Central Colleens (1,2,3,4); Student Control (3,4); Mathematics Society (3); Make-up (3); Debate (2); Boosters' Club (1).

**GEORGE STEARNS**

Register Staff (4); Library Monitor (4); Project Committee (4); Student Control (3,4); Central High Players (1,2,3,4), Sergeant at Arms (3); President (4); National Thespians (3,4); Declamatory Contest (4); Make-up (1,2,3); Road Show (1,2,3); Regiment (1,2); Business Manager, "College Widow" (4); "Daddy Long-Legs" (2); Costume Master (1,2); "First Night" (3); Student Control Convention (3).



**CORA LEE SMITH**

Latin Club (2,3,4); Student Control (3,4); Central Colleens (3); Girls' Junior Glee Club (2).

**ESTHER STEIN**

Register Staff (4); Inter-club Council (4); Loquax (3); Student Control (3,4); Library Monitor (4); Central Colleens (1,2,3,4); Latin Club (2,3); Girls' Senior Glee Club (2); Girls' Junior Glee Club (1).



**GEORGIA SMITH**

Swimming, Lifeguard (4).

**HAROLD STEIN**

Regiment (1,2,3); Crack Platoon (2,3); Library Monitor (3); Forensic Society (2,3,4); Student Control (2,3); Biology Round Table (2,3); Debate (2,3); Boosters' Club (2); Atlas Club (2); Spanish Play (2); Track (1).



**JOSEPHINE SMITH**

Student Control (4); Central High Players (4); Library Monitor (4); Junior Honor Society (2,3); Central Colleens (1,2); Debate (2); Swimming (1); Boosters' Club (1).

**CHARLES STEUERT**



**JAMES SOUBY**

Junior Honor Society (1); Mathematics Society (4); Football (3); Basketball (1,3); Regiment (1,2).

**MAYME STRIBRAL**



**HARRY STICKLER**

Regiment (1, 2, 3, 4), Lieutenant Colonel (4); C.O.C. (4); Engineers (3,4); Crack Squad (3); Crack Platoon (3); Junior Honor Society (3); Athletic Honor Society (4); Baseball (1,2,3,4); Football (3,4); Boys' O-Club (2,3,4); Library Monitor (4); Road Show (3); Hi-Y (1, 2,3,4); Der Deutsche Verein (2,3).

**JEAN STONE**

Titians (1, 2, 3, 4), President (4); National Music Supervisors' Convention (4); A Cappella Choir (2,3, 4); Student Control (2,3,4); Library Monitor (4); Opera (3, 4); Girls' Senior Glee Club (2); Girls' Junior Glee Club (1); State Music Contest (2).

**ROBERT STORM**

Senior Play (4); Library Monitor (4); Mathematics Society (4); Track (3,4); Cheerleader (4); Athletic Manager (4); Boys' Junior Glee Club (1,3); Spring Concert (1).

**JOHN SWANSON**

Regiment (1, 2, 3, 4), Captain and Adjutant (4); Engineers (2, 3, 4); C.O.C. (4); Hi-Y (1,2,3,4); Football (1); Atlas Club (1,2).

**PEGGY SWARTZLANDER**

Home Economics Club (4); Girls' Senior Glee Club (2); Girls' Junior Glee Club (1).

**WILLIS TAYLOR**

Regiment (1,2,3,4), First Lieutenant and Adjutant (4); C.O.C. (4); Senior Home Room Chairman (4); Boys' O-Club (2, 3, 4); Swimming (2,3); State Meet, Third Place (3); Mathematics Society (4), Sergeant at Arms (4); Road Show (4); Biology Round Table (2); Atlas Club (1,2); Speakers' Bureau (3).

**LOIS THOMAS****NATIONAL HONOR SOCIETY**

Register Staff (4); Girls' Rifle Team (4); G.A.A. (1,4); Quill and Scroll (4); Baseball (1,2,3,4); Junior Honor Society (1,2); Student Control (2,3); Volleyball (1,4); Hockey (1,2,4).

**RUTH THOMSEN**

A Cappella Choir (4); Girls' Senior Glee Club (3); Girls' Junior Glee Club (2).

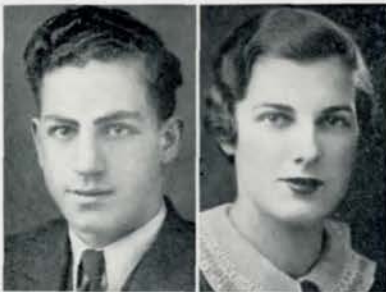
**CARL THORSEN**

A Cappella Choir (2,3,4); Opera (2,3,4); State Music Contest (2); Boys' Junior Glee Club (1); Boys' Senior Glee Club (2).

**GRETCHEN TRAVIS**

Central Committee (2, 3, 4); Road Show (4); Senior Play (4); Senior Home Room, Sergeant at Arms (4); Junior Honor Society (2); Central Colleens (2).





**JOSEPH TROIA**

Boys' O-Club (3,4); Wrestling (1, 2,3,4); Baseball (2); Basketball (2); Library Monitor (4); French Play (3); Mathematics Society (4); Treasurer (4); Regiment (1,2,3); Atlas Club (2); Road Show (4); Senior Play (4).



**MARY LAURA VANCE**

NATIONAL HONOR SOCIETY

Senior Play (4); Road Show (4); Library Monitor (4); Secretary, Senior Home Room (4); Monitors' Council (4); Lininger Travel Club (3,4); Secretary (3); President (4); French Play (3); Central High Players (3); Greenwich Villagers (2,3); Secretary (3); Junior Honor Society (1,2,3); Art Contest (3).



**DOROTHY TUCHMAN**

A Cappella Choir (3,4); Library Monitor (4); Opera (2); Girls' Senior Glee Club (2); Girls' Junior Glee Club (1).



**CARRUTH WAGNER**

Regiment (1,2,3,4), Second Lieutenant (4); C.O.C. (4); Engineers (4); Football (2,3); Biology Round Table (2); Latin Club (1,2).



**HAROLD TUCHMAN**

Regiment (1, 2, 3, 4), Second Lieutenant (4); C.O.C. (4); Orchestra (1,2,3,4); Mathematics Society (4); Biology Round Table (2); Basketball (1,2); Art Contest (3); Opera (1,2,3,4); Road Show (1,2,3,4).



**FRANCES WAGSTAFFE**

Library Monitor (4); Forensic Society (2); Le Cercle Francais (2).



**ADELAIDE TYRRELL**

**FRANCES WAIDLEY**

G. A. A. (2, 3, 4); Student Control (4); Basketball (2,3); Hockey (2, 3); Baseball (1,2); Project Committee (1); Boosters' Club (1).



**JEANNE VAN BUSKIRK**

Register Staff (4); Library Monitor (4); Central High Players (4); Girls' Natural Science Club (3); Boosters' Club (1,2); Home Economics Club (3).

**JACK WALLIN**

Regiment (1,2); Swimming (2,3); Football (1,2).



**MARGARET WATKINS**

Library Monitor (4); G.A.A. (4); Volleyball (4).

**BEVERLY WEAVER**

O-Book Staff (4); Register Staff (3); Central High Players (1,4); "Moonshine and Honeysuckle" (4); Senior Play (4); Opera (4); A Cappella Choir (4); National Music Supervisors' Convention (4); Make-up (4); Library Monitor (4); Le Cercle Francais (4); Inter-Club Council (3); Latin Club (3); Girls' Natural Science Club (2,3); Central Colleens (2); Girls' Junior Glee Club (2); Hockey (1).

**SAM WEINSTEIN**

NATIONAL HONOR SOCIETY

Mathematics Society (2,3,4); Track (4); Cheerleader (3,4); Athletic Manager (4); Library Monitor (4); Road Show, Advertising Manager (4); Stage Crew (2); Der Deutsche Verein (3); Boosters' Club (1,2); Junior Honor Society (2).

**WELLS WETHERELL**

Regiment (1,2,3,4), Captain (4); C. O. C. (4); Crack Squad (2,3); Crack Platoon (3); O-Book Staff (4); Library Monitor (4); Central Committee (2,3,4); Gentlemen's French Club (2,3,4), Vice President (4); Speakers' Bureau (4); Hi-Y (3); French Play (2,3,4); Road Show (2,3); Senior Play (4); Junior Honor Society (2); Golf (3,4); Boys' Rifle Team (3).

**BERNARD WHITE**

Regiment (1,2); Discussion Club (4); Student Control (3).

**GENEVIEVE WHITE**

Senior Play (4); Library Monitor (4); Student Control (4); Central Colleens (1,2).

**HELEN WHITEBOOK**

Titians (1,2,3,4); Student Control (1,2,3,4); Los Sabios (1,2,3); Register Staff (4); El Heraldo (3); Library Monitor (4); Girls' Natural Science Club (2); Inter-Club Council (3); Central Colleens (1).

**RICHARD WHITMORE**

Regiment (1); Register Staff (3,4); El Heraldo (4); Los Sabios (4); Junior Honor Society (3); Quill and Scroll (4).

**JIM WHITNEY**

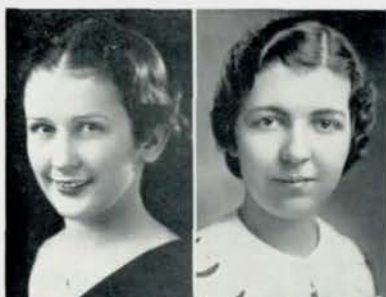
Regiment (1,2); Atlas Club (1,2), Vice President (1).

**SYLVIA WIESMAN**

Senior Play (4); El Heraldo (4); Library Monitor (4); Los Sabios (3,4); Register Staff (4); Der Deutsche Verein (2), Sergeant at Arms (2); Girls' Junior Glee Club (1,2).







**BETTY WIGTON**

Library Monitor (4); Central High  
Players (2); Swimming (1);  
Central Colleens (1).



**CAROL WIGTON**

Library Monitor (4); Greenwich  
Villagers (3,4); Latin Club (2);  
Swimming (2); Central Colleens (1,  
2); Boosters' Club (1,2).



**WAYNE WILSON**

"Moonshine and Honeysuckle" (4);  
A Cappella Choir (3,4); Boys' Sen-  
ior Glee Club (3); Boys' Junior  
Glee Club (1,2); Boosters' Club  
(2); Road Show, Costumes (2);  
Drill (1,2).



**WILMA WOLCOTT**

Student Control (4); Girls' Senior  
Glee Club (4); Opera (4).



**JOSEPHINE WOLF**

**JEAN YATES**

A Cappella Choir (3,4); National  
Music Supervisors' Convention (4);  
Central Colleens (2,3); Girls' Sen-  
ior Glee Club (3); Girls' Junior  
Glee Club (1,2); Swimming (1).

**DOLORES YOST**

Senior Play (4); Library Monitor  
(4); Monitors' Council (4); Swim-  
ming (2,4); Girls' Natural Science  
Club (2,3).

**DOROTHY YOUNG**

**JEANNE ZOOK**

A Cappella Choir (4); O-Book Staff  
(4); Titans (3,4), Secretary (4);  
Greenwich Villagers (3); Central  
Colleens (3); Student Control (3);  
Girls' Senior Glee Club (3); Girls'  
Junior Glee Club (3); Girls'  
Natural Science Club (3).

**NAOMI BERKOWITZ**

CLASS REPORTER, JANUARY

Register Staff (4); Central Colleens  
(1,2,3,4); Student Control (4); Le  
Cercle Francais (2).

**MARVIN CRABTREE**

Track (4).

**EDWARD OWEN**

Library Monitor (4); Hi-Y (4);  
Tennis (4); Football (4); Basket-  
ball (3); Baseball (3).



**PAUL GILLER**

**NATHAN POHL**



**CHARLES HANKINS**

Boys' Junior Glee Club (2).

**CLIFFORD RIDDLE**

"College Widow" (4); Central High  
Players (4); Swimming (4); Boys'  
Junior Glee Club (1,2,3,4); Senior  
Play (4).



**BETTE HARRIS**

Road Show (2,3,4); Opera (3); A  
Cappella Choir (3); Girls' Senior  
Glee Club (3,4); Girls' Junior Glee  
Club (1); Central Collects (1).

**MILTON ROBINSON**

A Cappella Choir (3,4); National  
Music Supervisors' Convention (4);  
Opera (1,2,3); Drill (1,2,3); Boys'  
Senior Glee Club (2); Boys' Junior  
Glee Club (1); Road Show (1).



**PHILIP HEFLIN**

Central High Players (4); Senior  
Play (4); Swimming (3); Tennis  
(3).

**DOUGLAS SARSON**

Latin Club (1,2).



BERTHA BRAUDE



ROBERT HERSHMAN



CAROLINE DRAKE



ROBERT McNAB



SENIOR CLASS (Continued)

- |                      |                       |
|----------------------|-----------------------|
| ROSS ALLISON         | CHARLES KORNEY        |
| ISOBEL AMOS          | CLARK KRELLE          |
| VIRGINIA AXTELL      | JANE LOUISE LEARY     |
| SARAH BUONO          | JAMES LIPARI          |
| LOUIS BUSHMAN        | MORRIS LODER          |
| GRACE CANIGLIA       | FRANCES McGRANE       |
| BETTY CATHERS        | BARBARA McMILLAN      |
| RUSSEL CLARK         | VIRGINIA MILLER       |
| CHARLES CHRISTIANSEN | PEARL MONSKY          |
| SHELLEY CONDON       | MARJORIE MOREARTY     |
| DANIEL DRAPER        | HUGH MORTON           |
| GEORGE DUFF          | VIVIAN NEBLE          |
| MARGARET FLETCHER    | BOB NIEMAN            |
| HELEN FORBES         | ELLSWORTH PERRY       |
| ANNABELLE LEE FORKEL | C. T. RICHMOND        |
| DONALD HAMILTON      | S. MacALVAY ROSEWATER |
| EDWARD HARRIS        | THOMAS ROSS           |
| NORA HARRIS          | ANDREW SIMCHO         |
| JAMES HEFTI          | FLORENCE SMITH        |
| ED HRUBY             | MARY SPRAGUE          |
| ELIZABETH HUNTER     | LEO THELEN            |
| RUBY IRWIN           | WARDELL TURNER        |
| JEAN JANSEN          | ROSEMARY UMSTED       |
| ANNA KALCIK          | LILLIAN VAJGRT        |
| RICHARD KISSEL       | JAMES VAN PEYMA       |
| DICK KITCHEN         | MAURINE VODRA         |
|                      | PAUL ZIMMERMAN        |

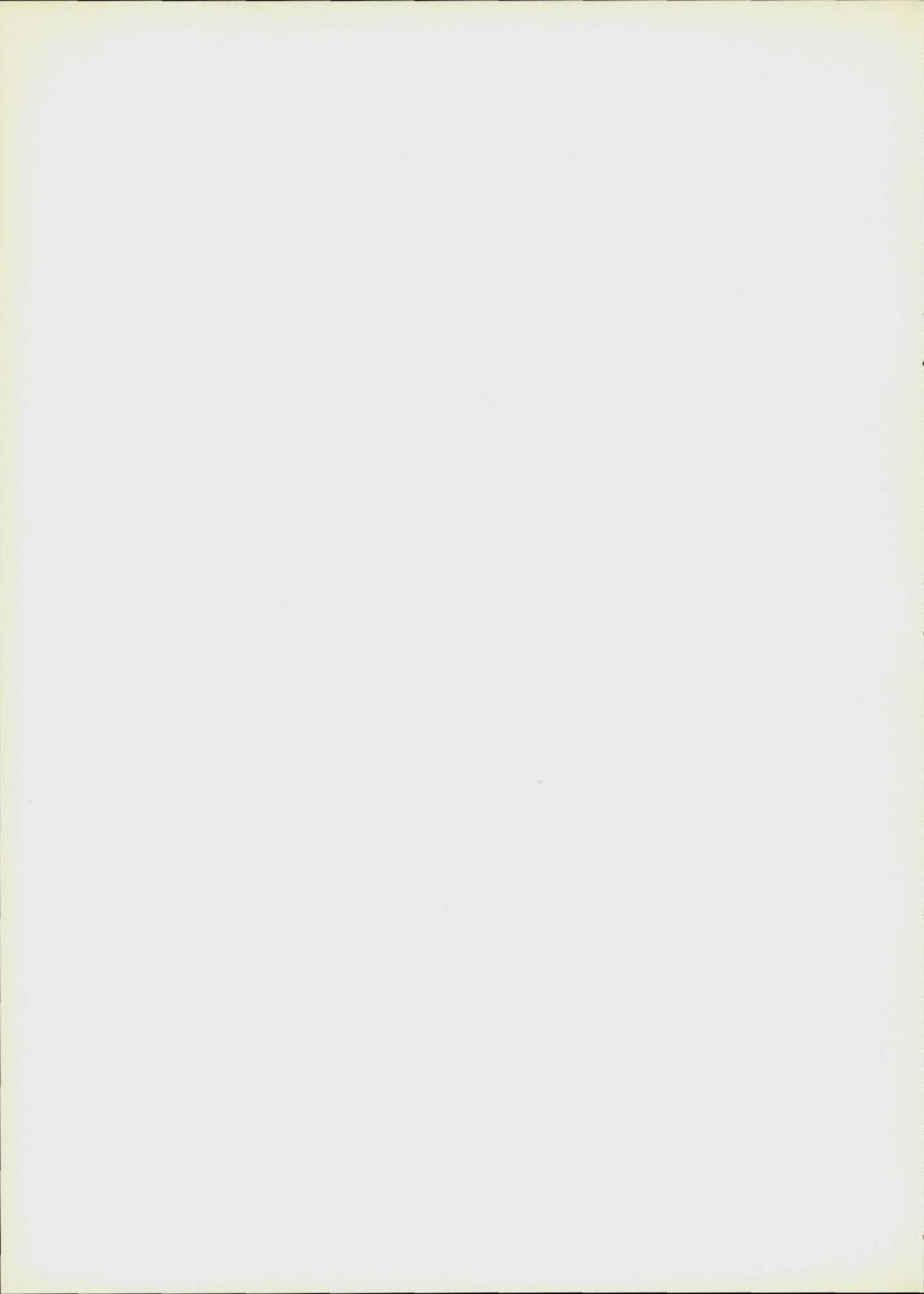
SENIOR CLASS SPONSORS

- |                    |               |
|--------------------|---------------|
| AMANDA E. ANDERSON | F. Y. KNAPPLE |
| BESS BOZELL        | MARY PARKER   |
| AUGUSTA KIBLER     | J. G. SCHMIDT |





*Designed and cut by Ed Mullen*





#### NATIONAL HONOR SOCIETY

Gray, Bednar, Churchill, Sandham, Row, Senter, J. Osborn, Bonekemper, Macalister, Rosenbaum, Lerner, Millman, Ackerman, Buckland, Marconit, Buettenback, Potter, M. Osborne, Ederly, Adams, Civin, Weinstein.  
 Resnick, McDonald, Berkowitz, Hultman, Thomas, Holmstrom, Vance, Ogilvie, Holland, Clarke, Payne, Gordon, Nilsson, Locke, Christopher, Moran, Nelson, Moeller, Byrd, Slutsky, Jones, Kulakofsky.  
 Not in picture: Robert Stiefler, Harding Rees.

#### NATIONAL HONOR SOCIETY

**F**ORTY-SEVEN Central seniors were elected to the National Honor society in 1934. These twenty-four girls and twenty-three boys have received the highest honor that Central High school can confer upon any student. From the upper quartile of the senior class in scholastic ranking, these students were selected on the qualities of service, character, leadership. A faculty committee composed of the heads of the departments and sponsors of activities makes the selections under the chairmanship of Principal J. G. Masters.

Membership in the National Honor society represents to the high school student what Phi Beta Kappa does to the college student. And Central High school takes a special pride in this organization since it was founded in 1921 at the suggestion of Principal Masters, who felt that students excelling in high school work and activities should be given some sort of recognition. Now a nation-wide honorary fraternity, it has over eighteen hundred chapters throughout the United States. Including the forty-seven students elected this year, 573 seniors have been admitted to membership in the Central High chapter of the society in the fourteen years of its existence.

Superintendent of Schools Homer W. Anderson announced the names of Central's fourteenth honor group at an assembly May 8 in the auditorium. In his speech to the honor students, Dr. Anderson said, "If you worked hard just to be here this morning, you are not a success; but if you have done everything that came along as well as possible, I congratulate you; it is that that will lead you to success."

To these students, Central High school is indebted. Although well represented in distinguished faculty and alumni, the school is known primarily by the caliber of its students from year to year. The outstanding record of these pupils is the basis for Central's continued high ranking.





**JUNIOR HONOR SOCIETY — GAMMA CHAPTER**

McGee, Tatelman, Cunningham, Duff, Leffler, Moody, Gogela, Williams, Leon, Wolf, Cohen, Sturtevant, Rosewater, C. Hindman, Petty, Knipprath, Hansen, Smith, Nimmo, Bolker, Rohrbaugh, Hornstein.

Rubnitz, Chadwell, N. Taylor, J. Taylor, Hart, Dodson, McClure, Field, Klaiman, Harriss, H. Hindman, Allis, Winget, Reynolds, Kelley, Nolan, Tunison, Kennedy, Haines, Klopp, Hirsch, Bickel, Underwood.

Vogel, Krauss, Rubendall, Osoff, Olson, Carr, Wood, Dansky Beeson, Jones, Baldwin, Goetz.  
Not in picture: Anderson, Campbell, Lundgren, Rees.



**JUNIOR HONOR SOCIETY — DELTA CHAPTER**

M. Miller, Simon, Nourse, Burton, Dansky, DeWitt, Wiese, Moon, J. Miller, Abbott, Hennings, Tarnoff, Koory, Davis, Hanst, E. Davis, Guenther, Baum, Bauder, Payne, Marsh, Hossack, Lipp, Bordy, Bedell, Swartz, Young, Kieser, Smith, Rosenbaum, Silverman, Sheehan, Cornick, Dolphin, Frank, Blumkin, Spechter, Allen, Pepper, Heagey, Eyre, Saxe, Finer, Ramsey, Gershater.



#### JUNIOR HONOR SOCIETY — EPSILON CHAPTER

Hanst, Jorgensen, Williams, Seagren, Grimes, McCrory, Morris, Soshnik, Ziegler, Barker, Kirschenbaum, Bryner, Buchanan, Holmstrom, Mortensen, Kaster, Wilkinson, Baird, McNulty, V. Pratt, Hurtz, Dodds, Rainey.  
 Maxwell, Scott, Tindell, J. Pratt, Allyn, Klammer, Stone, Seybold, Dyer, Friedlander, Wolfson, Resnick, Hartnett, Perkins, Kelly, Eiseman, Purdham, Knox, Johnson, Laytin, Odorisio, Levenson, Burtain, Hochstrasser.

### JUNIOR HONOR SOCIETY

**T**HE GOAL to which all underclassmen aspire! The purposes of the Junior Honor society are to recognize individuality and high achievement in both studies and school activities, to encourage leadership, to develop character. The institution was founded through the efforts of Principal J. G. Masters in 1923 and is sponsored by a council of five faculty members.

Membership in Junior Honor society is based on scholarship and character; in addition, sophomores and juniors must also display qualities of leadership, service, and loyalty to the school. Those elected must have two full credit A's and no grade below B, though the individual carrying five subjects is permitted one C.

Three chapters compose the organization: Epsilon for freshmen, Delta for sophomores, Gamma for juniors. This year fifteen per cent of each class was elected to membership by the general council of sponsors and three members at large, under the chairmanship of Miss Mary Elliott, history teacher. Graduates who have belonged to Junior Honor society are considered honorary members. At the end of one year active membership ceases.

Announcement of the elections was made in the Central High school auditorium on May 14, with Mr. Fred Hill, assistant principal, in charge. Miss Myrna Jones, head of the expression department, announced the Gamma chapter; Mr. R. B. Bedell, mathematics teacher, the Delta chapter, and Miss Sara Vore Taylor, head of the constructive English department, the Epsilon chapter.

The officers of the society are the president from the Gamma chapter; the vice president, elected from the Epsilon chapter, and the secretary-treasurer from the Delta chapter.





#### FIRST SEMESTER REGISTER STAFF

Baldock, Carman, Macalister, Edgerly, Airy, Greer, Churchill, Mattes, Bednar, Nash, Grels, Marconnit, Van Buskirk, Buckland, Lerner, Whitmore, Dorinson, Hershman, Ross, Slutsky, Kulakofsky, Friedman, Whitebook, Hultman, Stein, Wiesman, Christopher, Fales, Moeller, Bickel, Thomas.

#### PUBLICATIONS

**T**HE CENTRAL High Register, founded in 1874, is published each week by the Journalism department under the direction of Mrs. Anne Savidge. Each year it has won high honors in recognition of its merit. For several years the *Register* has received an All-American honor rating, the highest award conferred by the National Scholastic Press association, and a similar award conferred by the Columbia Scholastic Press association.

Thirty-seven students this year were awarded membership in Quill and Scroll, international honor society for high school journalists. The purpose of the organization is to raise the standards of journalism through the development of a high code of ethics in students. The qualifications for membership in this society are: outstanding work in journalism, ranking in the upper third of the class, recommendation by the journalism instructor, and approval of the recommendation by Edward Nell, executive secretary. The society, founded in 1926 by a group of teachers at the University of Iowa, has grown so that now there are six hundred active chapters in the United States with about fifteen thousand members. An official publication, *Quill and Scroll*, which is published quarterly, is received by members of this society.

The Latin department this year published its fifth annual *Loquax* as part of the *Register*, with members of the *Register* staff as its chief editors. Other members of the staff were chosen from the Latin department. The *O-Book*, senior annual publication, was published by a staff made up of members of the *Register* staff, and by editors appointed from the senior class.

#### QUILL AND SCROLL — 1933 - 34

WINSTON AIRY, MORTON BALDOCK, KATHRYN BAUDER, BRYCE BEDNAR, IRENE BUCKLAND, NANCY JANE CHADWELL, MARY JANE CHRISTOPHER, DARRELL CHURCHILL, JANICE DAUGHERTY, MALVERN DORINSON, WILLIAM GRAY, JERENE GROBEE, FLORENCE HAGEDORN, VIRGINIA HAINES, BILL HORN, MARGARET HULTMAN, RUTH M. JONES, DOROTHY KULAKOFSKY, JAMES LEFFLER, MORRIS LERNER, GORDON MACALISTER, MARY FRANCES MARCONNIT, JOE MATTES, DANIEL MILLER, HELEN MOELLER, MARGARET MORAN, LEIGHTON NASH, BILL O'BRIEN, WILLIAM ROSENBAUM, EDITH SCHNEIDER, LOUIS SEMINARA, BERTHA SLUTSKY, MARY SPRAGUE, ROBERT STIEFLER, MAURICE TATELMAN, RICHARD WHITMORE, HAROLD ZELINSKY.





**SECOND SEMESTER REGISTER STAFF**

Gray, Finkel, O'Brien, Tatelman, Edgerly, Airy, Miller, Horn, Leffler, Seminara.  
 Baldock, Cooper, Macalister, Mattes, Bednar, Nash, Lerner, Johnson, Arbitman, Hagedorn.  
 Greusel, Van Buskirk, Ross, Rosenbaum, Whitmore, Dorinson, Thomas, Slutsky, Haines, Schneider, Noe.  
 Nussrallah, Chadwell, Anderson, Christopher, Daugherty, Moran, Kennedy, Moeller, Bauder, Bickel, Jones.

**REGISTER STAFF**

**FIRST SEMESTER**

BRYCE BEDNAR.....Editors.....

GORDON MACALISTER }  
 BETTY BICKEL }  
 MARY JANE CHRISTOPHER }  
 DOROTHY KULAKOFSKY }

.....Associate Editors.....

MORRIS LERNER.....News Editor.....

JOE MATTES }  
 MALVERN DORINSON }.....Sports Editors.....

DARRELL CHURCHILL.....Business Manager.....

MINDA FRIEDMAN.....Advertising Manager.....

.....Assistant Advertising Manager.....

ROBERT HERSHMAN }  
 RICHARD WHITMORE }.....Circulation Managers.....

CHRISTINE ROSS }  
 JEANNE VAN BUSKIRK }.....Exchange Managers.....

EDWARD MULLEN.....Staff Cartoonist.....

**SECOND SEMESTER**

{ BRYCE BEDNAR  
 { MORRIS LERNER  
 { GORDON MACALISTER

{ MARY JANE CHRISTOPHER  
 { JANICE DAUGHERTY

{ BETTY BICKEL  
 { MALVERN DORINSON  
 { JOE MATTES

DANIEL MILLER

HELEN MOELLER

WINSTON AIRY

{ MORTON R. BALDOCK  
 { RICHARD WHITMORE

{ CHRISTINE ROSS  
 { JEANNE VAN BUSKIRK

EDWARD MULLEN

**O-BOOK STAFF**

Editor in Chief.....RUTH M. JONES

Business Manager.....WILLIAM ROSENBAUM

Circulation Manager.....EDWARD E. ADAMS

Art Editor.....CHARLOTTE BUETTENBACK

Associate Editors.....

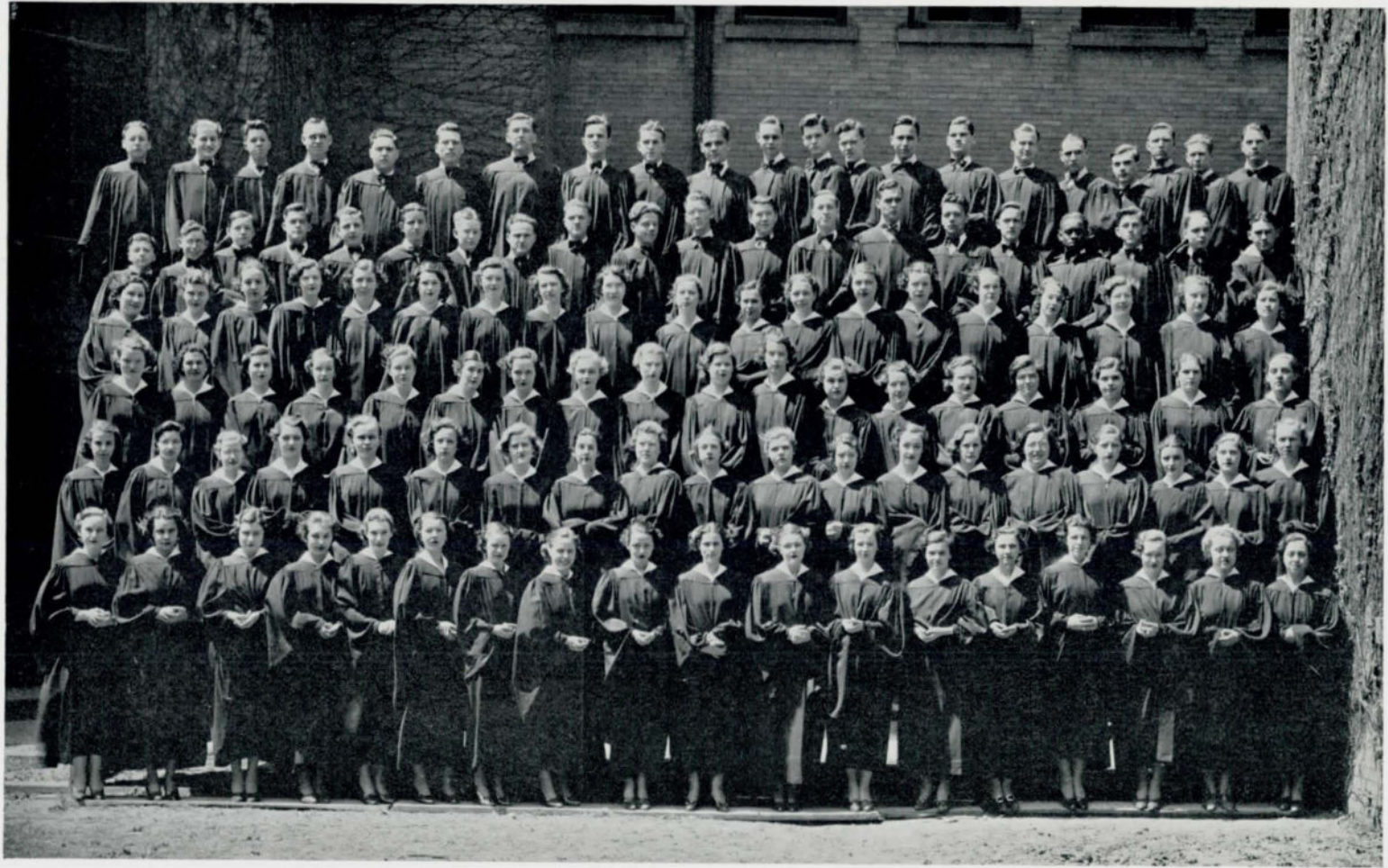
{ DOLLY BLISS  
 { ELEANOR F. GREUSEL  
 { MARGARET MORAN  
 { STANLEY POTTER  
 { BERTHA SLUTSKY

**FACULTY ADVISERS**

ANNE LANE SAVIDGE  
 EDITORIAL

MARY ANGOOD  
 ART

ANDREW NELSEN  
 BUSINESS



A CAPPELLA CHOIR





#### GIRLS' SENIOR GLEE CLUB

M. Anderson, Berner, Roddy, Woods, McFarland, Nealus, Pedersen, Johnson, Danielson, Zook, Fry, Strauss, Holmstrom, Taylor, Allison, Polonsky, Wagenseller, Barnett, Chamberlin, V. Winget, Pratt, Rifkin, Smernoff, Ramsey, Burnett, McArthur, J. Winget, McGrane, Tarry, Knox, Bryner, Ernst, Fike, Korney, Bernstein, Richards, Fishberg, Elarth, Wiemer, Cathers, V. Anderson, Bell, Clucker, J. Anderson, J. Dodds, Harper, Shreck, Kutsche, Baysdorfer, Lonergan, Utt, Wood, B. Dodds, Hughes, Rivett, Higgins, Hultman, Morton, Borg, Dolphin, Changstrom, Prime, Streeter, Beranek, Myers, Chambers, Covington.

#### A CAPPELLA CHOIR

THE A CAPPELLA CHOIR, one of Central's largest and most rapidly rising organizations, has completed the most successful year in its history. The group is fast becoming recognized as one of the leading choirs in the United States. Members are promoted to the choir from the Senior and Junior glee clubs.

This year the choir reached the climax of its season by singing for the members of the National Music Supervisors' conference, April 13 at Chicago. The choir sang for the National Music Teachers' association at Lincoln and for the Nebraska State Teachers' convention, and presented their annual concert at the First Presbyterian church. They also broadcast twice over KOIL, and sang for General Hugh S. Johnson at the City Auditorium. They closed their season with their annual Spring Music Festival on May 25. Mrs. Pitts is assisted in her work by Mrs. Elsie Howe Swanson and Mrs. Irene Haskins Jensen.

#### CHOIR MEMBERS (See opposite page)

Wolf, A. Dansky, Crosby, Bentley, Laytin, Bernstein, Hesler, Traub, Frohardt, Greer, Wendell, Lustgarten, Taggart, Tatelman, Wilson, Reynolds, Phelps, Duff, D. Hansen, Durden, Osborne.  
 Hedges, Hennings, Burke, Heald, Korisko, B. Fry, Cleveland, Hornstein, Polyzois, Butts, Edwards, Reiser, K. Hansen, Barnett, Rosenberg, J. Allis, T. Jones, Dergan, Miller, Harshburger.  
 Gilbert, Pratt, Cooper, Parks, Yates, Hubbard, Knapp, Campbell, Bishop, Eldridge, Myers, Eller, Moran, Rahel, Otis, Roberts, Sanquist, Eck, E. Dansky.  
 H. Allis, Milone, Bliss, McClure, Allen, McCulley, Slabaugh, Anderson, Hart, DeWitt, Mead, Lacina, Pollard, Goldsmith, Borman, Castanzo, Clarke, Weaver.  
 Thomsen, Resnik, Bedell, Kipling, Backlund, Beeson, Mossman, Cary, J. Stone, Pohl, Rohlf, M. Jones, Hunting, McCargar, Thomas, Tuchman, Fore, Baldwin, Kilbourn, Meyers, Dickerson, M. Stone, Pitts, Morse, Heagey, Farber, Bickel, Binkley, Smith, France, M. Fry, Holman, Goetz, Fletcher, Ashwood, Sautell, Blumkin.





#### BOYS' SENIOR GLEE CLUB

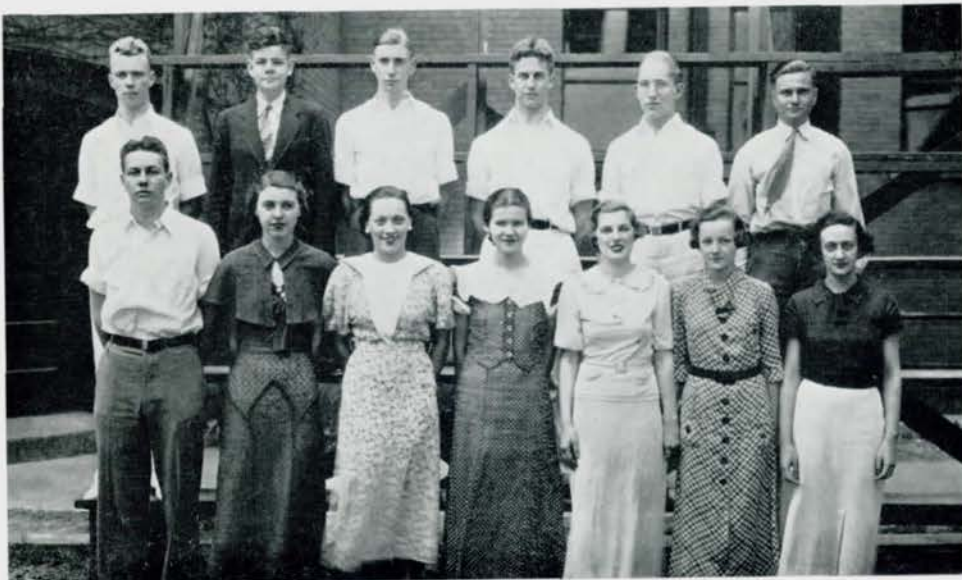
Hollingsworth, Grimes, Knox, Westcott, Hamilton, Miller, Bernstein, Felman, Fleming, Kennard, Rosen,  
 Samuelson, Burton,  
 Luikhart, Thompsan, Wherry, Cunningham, Johns, Tullis, Nall, Nichols, Basilico, Davis, Marcus, Phillips,  
 Haney,  
 Brennan, Wrieth, Mortensen, Hammerstrom, Resnick, Lerner, Mrs. Pitts, Steetzel, White, Houser, Biddix,  
 Osterholm, Savage, Bogden.

#### BOYS' AND GIRLS' SENIOR GLEE CLUBS

**T**HE SENIOR GLEE CLUBS make up the group of the music department from which Mrs. Carol Marhoff Pitts, director of the choir, selects students to place in the a cappella choir. Pupils are first promoted from the Junior Glee clubs to the Senior Glee clubs, and, if they show sufficient ability and intelligence, they are promoted to the choir. There are five Junior Glee clubs, membership in which is open to any student who wishes to join. Voice classes are held every day in which students are given vocal training for group and solo work. Training in theory is offered by courses in Harmony. Music Appreciation and History of Music are also given. All music courses are purely elective.

The Junior Glee clubs are directed by Mrs. Elsie Howe Swanson, who gives them the fundamentals of right singing, and the elementary voice classes are directed by Mrs. Irene Haskins Jensen. This elementary training is the basis for the more advanced work done in the a cappella choir, the advanced voice classes, and the Senior Glee clubs under Mrs. Pitts. All pupils of the music department are eligible to be in the annual opera. This year the music department presented the comic opera, "The Mascot." Leads in this production were given to Margaret Fry, Kermit Hansen, Mary Jane France, Bob Butts, Francis Hesler, Bryce Bednar, Norman Bock, Willard Dergan, and John Money. Parts for the opera are determined by individual tryouts.

The music students presented, besides the opera, several broadcasts over KOIL, their annual Spring Music Festival, a program at the First Presbyterian church, and a few concerts in the Central High auditorium. The music department was unable to enter any students in the vocal division of the State Music contest because the candidates were in Chicago with the choir when the district contest was held.



#### MONITORS' COUNCIL

Clarke, Senter, Maxwell, Ogilvie, Drew, Payne,  
Potter, Moran, Yost, Christopher, Vance, Indoe, Slutsky.  
Not in picture: Stiefler.

#### MONITORS' COUNCIL AND STUDENT CONTROL

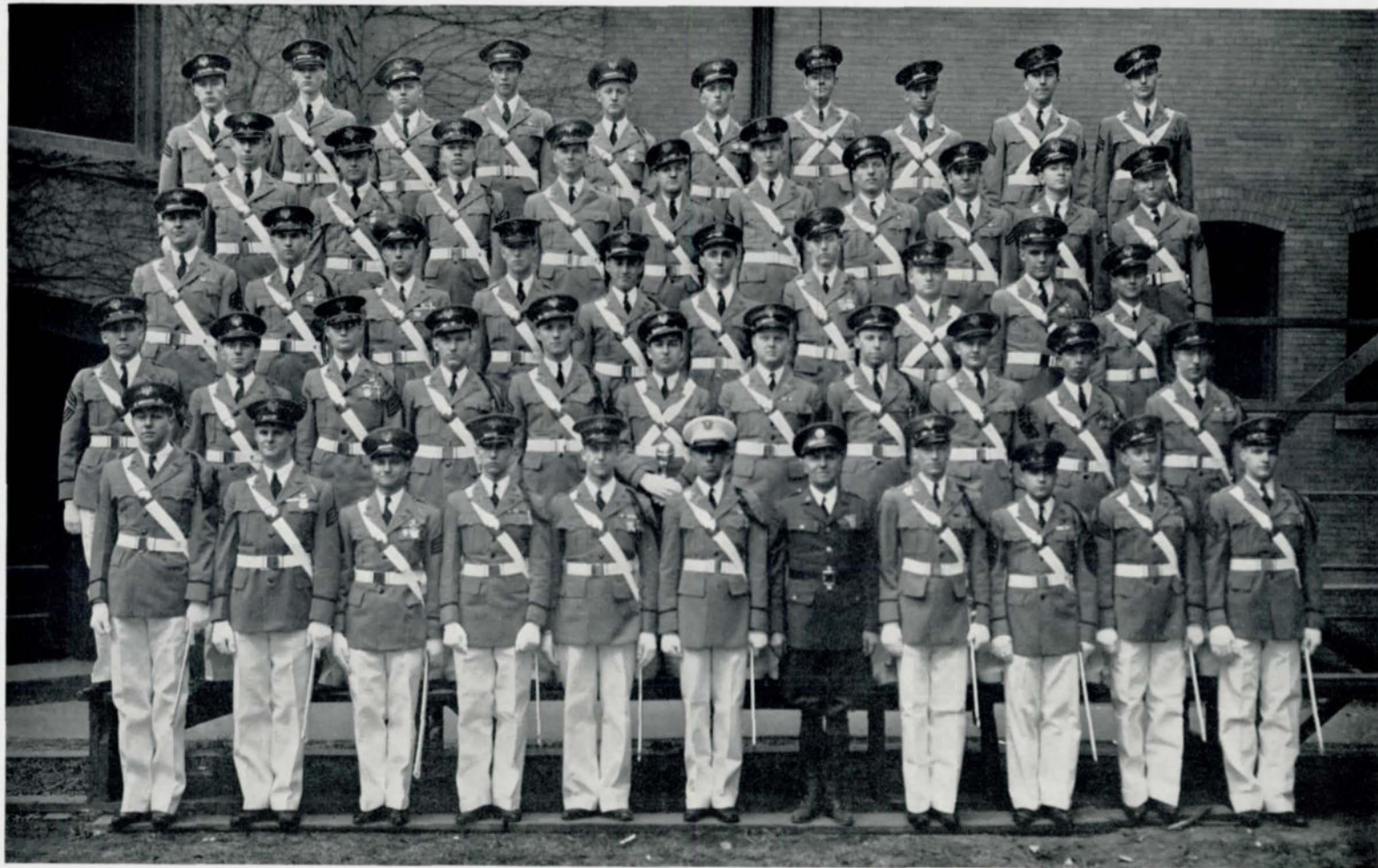
**T**WO OF THE activities connected with the library are the library section of the Student Control and the Monitors' Council, both forms of student government whose membership is based on character and ability. Students doing this work must be recommended by teachers and must have a good record in the library.

The Monitors' Council is composed of seven library monitors, one for each hour, elected every semester by the monitors themselves. The council elects a chairman and holds bi-weekly meetings. This year Norman Ogilvie was chairman for the first semester and Mary Jane Christopher for the second. The Monitors' Council considers the problems of the library, makes suggestions and constructive criticism of library order and system, and hears and discusses complaints.

For about six years the library has been aided by members of the Student Control. This year thirty-eight students are enrolled in this voluntary service. Before and after school and every hour of the day members help catalog and mend books, change bulletins, register students, type lists of pupils registered from study halls, file cards, mount pictures, type notices and duns for overdue books, and help with innumerable other odd jobs.

This work is not only of enormous assistance to the library, but is also of practical benefit to students in teaching them the use of a library and in giving them experience in the work itself. Our library has grown from a collection of 100 to 23,000 books and periodicals, and has progressed from a little-used library to one of the best and most efficient high school libraries in the country. The library is under the direction of Miss Zora Shields, head librarian, assisted by Mrs. Hazel Stewart, and Mrs. Catherine Blanchard, assistant librarians.





CADET OFFICERS' CLUB



## CADET OFFICERS' CLUB



**LIEUTENANT COLONEL  
HARRY E. STICKLER**

HARRY E. STICKLER  
LIEUTENANT COLONEL

NORMAN J. OGILVIE  
MAJOR FIRST BATTALION

EDWARD E. ADAMS  
MAJOR SECOND BATTALION

HARRY A. LIVERMORE  
CAPTAIN AND ADJUTANT

FRANK F. SEARS  
CAPTAIN AND ORDNANCE

ROBERT C. BONEKEMPER  
CAPTAIN COMPANY A

GEORGE C. EDGERLY  
CAPTAIN COMPANY B

GEORGE H. PAYNE  
CAPTAIN COMPANY C

STANLEY E. POTTER  
CAPTAIN COMPANY D

DEXTER A. CLARKE  
CAPTAIN COMPANY E

HOWARD DREW  
CAPTAIN COMPANY F

JACK ENCELL  
CAPTAIN BAND

ROBERT D. RODWELL  
CAPTAIN AND QUARTERMASTER

WELLS S. WETHERELL  
CAPTAIN AND COMMISSARY

JOHN W. SWANSON  
CAPTAIN AND PERSONNEL ADJUTANT

WILLIAM D. HOLLAND  
FIRST LIEUTENANT AND ADJUTANT  
FIRST BATTALION

WILLIS H. TAYLOR, Jr.  
FIRST LIEUTENANT AND ADJUTANT  
SECOND BATTALION

ROBERT E. McCLURG  
FIRST LIEUTENANT COMPANY A

JOHN C. QUADY  
FIRST LIEUTENANT COMPANY B

WILLIAM H. BROOKMAN  
FIRST LIEUTENANT COMPANY C

GEORGE H. HOLCOMB  
FIRST LIEUTENANT COMPANY D

JOE A. PILLING  
FIRST LIEUTENANT COMPANY E

SUMNER C. HAYWARD  
FIRST LIEUTENANT COMPANY F

BRYCE R. BEDNAR  
FIRST LIEUTENANT BAND

FRANK B. GREER  
FIRST LIEUTENANT AND AIDE

BRUCE M. KENNY  
SECOND LIEUTENANT AND QUARTERMASTER  
FIRST BATTALION

KEITH R. MAXWELL  
SECOND LIEUTENANT AND QUARTERMASTER  
SECOND BATTALION

VANCE E. SENTER  
SECOND LIEUTENANT STAFF

HAROLD J. ROW  
SECOND LIEUTENANT COMPANY A

MELVIN P. OSBORNE  
SECOND LIEUTENANT COMPANY A

PAUL L. BUNCE  
SECOND LIEUTENANT COMPANY B

GEORGE C. POLYZOIS  
SECOND LIEUTENANT COMPANY B

DAVID BERNSTEIN  
SECOND LIEUTENANT COMPANY C

MARVIN B. CRAWFORD  
SECOND LIEUTENANT COMPANY C

FRANK S. POWELL  
SECOND LIEUTENANT COMPANY D

EUGENE L. HURTZ  
SECOND LIEUTENANT COMPANY D

HAROLD A. PEERY  
SECOND LIEUTENANT COMPANY E

EDWIN C. SANDHAM  
SECOND LIEUTENANT COMPANY E

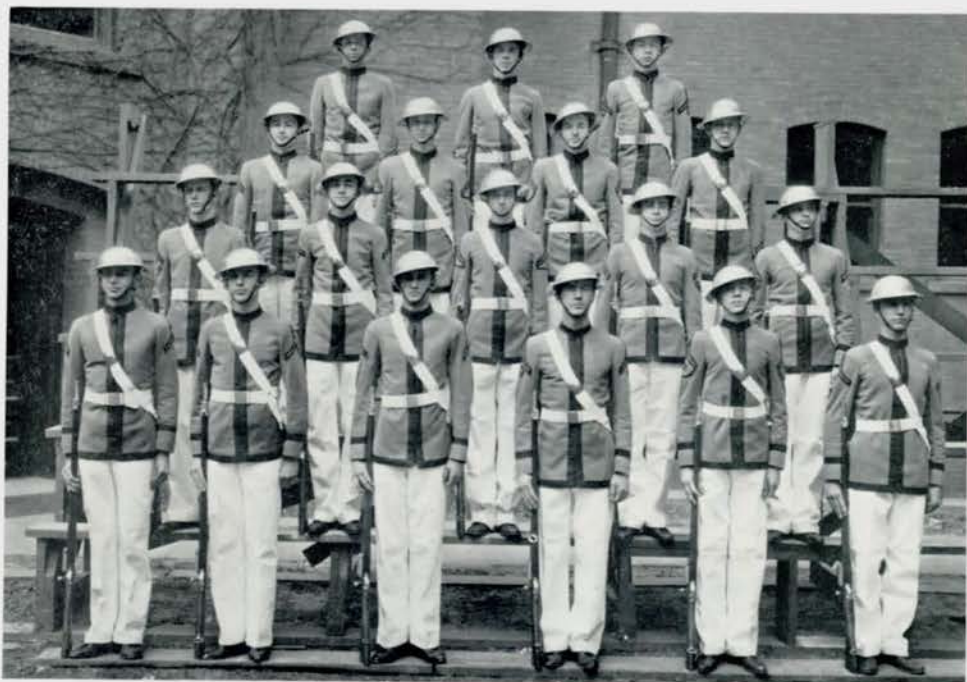
JOE S. MATTES  
SECOND LIEUTENANT COMPANY F

CARRUTH J. WAGNER  
SECOND LIEUTENANT COMPANY F

HARDING REES  
SECOND LIEUTENANT BAND

NORVAL B. EWING  
SECOND LIEUTENANT BAND

HAROLD S. TUCHMAN  
SECOND LIEUTENANT BAND



#### CRACK SQUAD

Goldner, Stelzer, Johnston.  
 Buchanan, O'Brien, Field, Olson.  
 Ball, Moose, Cunningham, Rogers, Livermore.  
 Lungren, Rohrbough, Smith, Hershman, Reimers, Rees.

#### OMAHA HIGH SCHOOL REGIMENT

**C**ADET OFFICERS' CLUB, Band, Crack Squad, Engineers, pictured here, are vital parts of the Central High School Cadet Regiment, and as such carry the greater part of the responsibility for the continued high ranking of the military organization.

Every cadet officer is a member of the Cadet Officers' club which sponsors the annual ball and the Road Show. Major Norman Ogilvie, president of the club, managed this year's splendid production. Under his supervision the cadets sold the Road Show tickets and secured the advertisements which made the show possible. It is by means of the Road Show that the Regiment finances its annual encampment.

The Engineers, carefully selected by the lieutenant colonel and the commandant, are responsible in great measure for the success of the annual cadet encampment at Valley, Nebraska. Headed by Captain George Payne, twenty cadets will leave school early to lay out the camp and plan for the other cadets who will arrive later.

The Band, captained this year by Jack Encell, is a necessary part of regimentals and the Road Show and the main factor in arousing enthusiasm and pep for assemblies and athletic games both indoors and out-of-doors.

And what Road Show could be complete without the rhythmic, precise drill of the Crack Squad? This year's squad of fifteen members, directed by Edward Adams, is to be congratulated for its outstanding work.

Congratulations also to Lieutenant Colonel Harry E. Stickler and to Commandant F. H. Gulgard for their splendid work in maintaining the high standards and wholesome spirits in the 1934 Cadet Regiment. The success of the Road Show, the satisfactory sale of Student Association tickets, and the well-drilled precision of the cadets are largely due to their leadership, organization, and understanding.



**BAND**

Whitney, Rushlau, Hornstein, McDonald.  
 MacDuff, Sherman, Griffith, Eisenstatt, Morris, Hansen, Jensen, Christensen, Duff, Anderson,  
 Beem, Saferstein, McDonough, C. Reese, Mallett, Ganz, Finkel, Soshnik, Hoberman, Bialac, M. Anderson,  
 C. Harris.  
 Tatelman, Encell, Bednar, Ewing, Biddix, Clevenger, Rowley, Nalty, Senter, Tuchman, H. Rees, Kopecky.



**ENGINEERS**

Lungren, Holland, Livermore, Potter, Encell,  
 Rohrbough, Kopecky, Wagner, Pilling, Sears, Nilsson, Clark, Bonekemper.  
 Drew, Brookman, Rodwell, Swanson, Stickler.  
 Edgerly, Stoit, Ogilvie, Adams, Payne, Miller, Crossman, McNaughtin.





#### NATIONAL ATHLETIC HONOR SOCIETY

Wiggins, Ogilvie, Rodwell, Brookman, Carter, Stickler, Payne,  
J. Osborn, Churchill, Elliot, Davidson, Edgerly, Bonekemper, Baer.

#### NATIONAL ATHLETIC HONOR SOCIETY

**T**HIRTEEN BOYS were awarded memberships this year in the National Athletic Honor society, the highest honor that can be given an athlete in a secondary school. Of the thirteen, Darrell Churchill, Robert Bonekemper, Bill Brookman, Bob Davidson, George Edgerly, Norman Ogilvie, Jack Osborn, George Payne, Harry Stickler, Bob Rodwell, Edward Wiggins, and John Elliott are seniors; James Baer is a junior. Only juniors and seniors are eligible. Those elected to the society this spring represent Central's four major sports. To be a member of this society one must have a scholastic average better than the average of the school and letter in a major sport. A brief review of the 1934 season for each of the sports follows:

**FOOTBALL**—Coach F. Y. Knapple had to build his gridiron team around a nucleus of only three veterans this season. The squad won three games, defeating South, Abraham Lincoln, and Benson. The traditional game with Technical ended in favor of the Maroons.

**BASKETBALL**—The Eagles had a bad year in the cage sport, defeating Abraham Lincoln once and North twice. The remainder of the games they lost, due largely to inexperience, ineligibility, and injuries.

**BASEBALL**—The diamond team started out with three lettermen this year. They had a rather unsuccessful beginning, losing the first few games, but they managed to defeat North and upset Creighton to end in fourth place in the city loop.

**TRACK**—Coach J. G. Schmidt's cinder trotters had a very good season this spring. They won three dual-meets at the beginning of the season, a triangular meet at North, a dual-meet at Fremont, and an invitation meet at Tech. For the first time since 1926, Central won the Inter-city track meet.



#### O - CLUB

Rogers, Perley, Garner, B. Reichstadt, Swartz, Seeman, Dunn, Taylor, Garver, Carroll, Lima, Masters. Campagna, Hutter, Holcomb, Buell, Clark, Wiggins, Robertson, Stoetzel, Payne, Abboud, Troia. Tobacco, Vuylstek, Stieckler, Baer, J. Osborn, Rodwell, Edgerly, Rosenbaum, Hershman, Reimers. Hruby, Whalen, Ogilvie, Monsky, Hesler, Davidson, Peterson, Churchill, Burruss, Horacek.

#### O - CLUB

THE O-CLUB, made up of letter winners in both major and minor sports, was very active during the past year due to the capable leadership of the presidents, Charles Korney, who headed the organization the first semester, and George Payne, the second semester.

The customary banquet and alumni basketball game were held with gratifying results. The Alumni basketeers came out on the long end of the score in the contest, held for the purpose of raising money for the motion picture fund. Several dances were held in the gym under the sponsorship of the O-Club. These dances not only served to promote interest in the athletic department but also served as a medium for the students of the school to get acquainted.

There were only three minor sports in the curriculum this year due to a curtailment of funds. Inter-school swimming was done away with.

TENNIS — Central's netsters didn't make a remarkable showing in the inter-city loop competition this year, but Coach Gilbert Barnhill is grooming inexperienced men for next year.

GOLF — Central's golfers won the Inter-city championship by defeating Benson, 10 to 1. Fred Reimers, rated one of the best prep golfers in the city, held down No. 1 position. Bob Langdon, Dick Pehle, and Sam Morgan were the other squad members.

WRESTLING — Coach Bexten's grapplers, with few lettermen, came through with a better than average record. The city wrestling tourney was revived this year and five Purple wrestlers qualified. Art Vuylstek and Joe Troia reached the finals in Class A, while Alfred Fanciullo climbed to the finals in Class B.





#### GIRLS' SPORTS

Reynolds, E. Anderson, Kavan, Kennedy, E. Kuehl, Thorson, R. Kuehl, Graves, Young, Patterson, Jensen, Pesicka, Averett.  
 Payne, Thomas, Guenther, Funder, L. Bexten, Duffield, Dyer, Caveye, Keeley, Johnson, Dorsey, Covington, Yaffe, Ensminger, Frank, Bailey, Soukup, Gill, H. Thomas, McWilliams, Ellison, Bowen, Appleby, Burt, Jackson.  
 Dailey, A. Horejs, M. Horejs, Carlson, J. Bexten, Wightman, Mrs. Meier, Hassert, Petersen, Keller, Marr, G. Meyers, Gerke.

#### GIRLS' SPORTS

**S**PORTS CLASSES were organized in 1931 by Mrs. Glee G. Meier, girls' gym instructor. Each sport is taken up in its season and the techniques and rules are taught. The newest sports that have been added to the routine are riflery and archery.

In riflery, the outstanding shooters are Ruth Bowen, Isabel Amos, and Lois Thomas. Mary Hassert, Betty Burt, Bonnie Young, Ethel Payne, and Dorothy Guenther won bars towards their expert markswoman rank. Riflery was coached by Sergeant S. B. Moore. In the archery competition, Ruth Bowen again took honors by shooting a possible 54. She was followed closely by Isabel Amos, Winnie Andersen, Lois Thomas, Mary Sprague, and Katherine Kavan. This sport was coached by Mr. Ralph Schencker. In both these sports, G.A.A. matches were held with North.

Besides these individual activities, the group sports such as hockey, volleyball, basketball, and baseball held interest of a large number of students. Hockey practice was carried on for ten weeks with few casualties. A volleyball playday was held at Central, December 19, with all the public high schools of the city participating. The senior team won the intramural competition and the right to represent Central at the playday.

In connection with the school basketball tournament, a telegraphic contest sponsored by the State League of Athletic Associations, was held January 13. Central basket-shooters took third place with nine girls representing Central. Lucille Keeley made a perfect score of eight throws, while four girls took nine shots to make the required total. For the winning team of the baseball tournament, the Omaha *Bee-News* sponsored a playday and a barbecue at Benson High school on May 21. Golf and tennis intramural tournaments were held as well as inter-city competition. These are the only two sports that are played between the schools of the city.





#### GIRLS' SWIMMING

Sexson, Taylor, Havens, Samuelson, R. Larson, Pettingill, Corkin, Glasson, Ditzen, Jones, Weidner, Dowler, Easton, D. Larson, Keller, Barnes, LaGreca, Farquhar, Changstrom, Parkinson, White, Mortonson, Grobee, Bellamy, J. Larson, Blumenthal, W. Lawson, Burton, Faye, Wolf, Graves, Magnuson, Linville, Clark, J. Curro, Oliver, Mrs. Meier, Smith, Gustofson, M. Horejs, Duda, Tribulati, Hanst, Westover, Spencer, DiBinardo, Brawner, M. Saxton, R. Saxton, Shaffer, Blevins, A. Horejs, Gottburg, Beranek.

#### GIRLS' SWIMMING

SWIMMING RETAINED its usual popularity among Central girls this year, with a total enrollment of seventy-five girls. Classes are held at the Jewish Community Center pool under the direction of Mrs. Glee G. Meier.

Girls in advanced swimming classes work primarily for junior life saving emblems, and several older girls strive for senior life saving awards. Girls winning their junior awards this season are: Harriett Wolfe, Virginia Havens, Rosemary Hanst, Betty Farquhar, Wanda Burton, Ruth Larsen, Elizabeth Menagh, Dorothy Larson, Marie Horejs, Lois Keller, Dorothy Larson, Margaret Blanchard, Mary Kay Parkinson, and Virginia Pettengill. Eight girls received senior life saving emblems: Lucille Duda, Jane Eayrs, Jerene Grobee, Bernice Sexson, Mary Sprague, Georgia Smith, Winnie Andersen, Margaret Saxton, and Beverly Brehm.

All swimmers are required to pass a number of achievement tests. Life guards are chosen by Mrs. Meier each semester to assist in swimming classes. Margaret Moon, Marion Whitmore, Georgia Smith, and Betty Ruth Oliver assisted this year.

A colorful and elaborate swimming pageant, "King Neptune's Carnival," was staged at the J. C. C. pool, January 13, by the girls' swimming classes and the boys' swimming team. Paul Lima, city breast stroke champion; Charles Hutter, fifty- and hundred-yard free style city title holder; June Sanquist, W.A.A.U. Midwest diving champ; Margaret Anderson, Bob Buell, and Frank Garver were some of the veteran swimmers in the pageant.

On May 22, a girls' swimming meet was held for the girls of the school. There were events for both beginners and seasoned swimmers.



#### DISCUSSION CLUB

Finkel, Laytin, Simon, Cohn, D. Miller, Stiefler, Lerner, Rosenbaum, Forbes, Crouse, Bellamy, Wintroub, Gross, C. Miller, Dansky, Miroff, Tatelman, Seminara, B. White, L. White.

#### DISCUSSION AND DEBATE

THE 1933 - 34 Discussion club has had a very successful year. Due to the fact that the Forensic society and the Discussion club were striving for the same goal, that of extemporaneous argumentation, it was decided to hold a joint meeting of both clubs for the purpose of merging. A vote of the members of both clubs last September decided in favor of the merger. A new constitution was drawn up incorporating the ideas of the constitutions of both clubs. In the new constitution two things were stressed, the necessity of continual attendance, and the importance of each member having an opportunity to lead the discussions.

The officers of the club are: Harry Zelinsky, president; Harold Finkel, vice president; Naomi Gross, treasurer, and Ervin Simon, secretary. Last semester Ernest Wintroub, president of the former Discussion club, acted as chairman of the discussions, while Robert Stiefler, president of the Forensic society, served as business chairman. Due to the heavy work of Miss Sarah Ryan as debate coach, Miss Autumn Davies is now acting as sponsor of the club.

This year's debate team climaxed their season by winning first place in the Nebraska division of the National Forensic league contest, held the latter part of April. The team went through the tourney without a single defeat. Because of this victory the team was eligible to enter the National Forensic tournament at Topeka, Kansas. The debaters were defeated in the third round of this tournament. The debate team also reached the semi-finals of the Midland tournament.

The Central debaters are Robert Stiefler, Ernest Wintroub, Katherine Stone, and Claire Miller.





*Designed and cut by Charlotte Buettenback*





## ACTIVITY CLUBS

THE ACTIVITY CLUBS of Central High school are numerous and varied, but all of them are founded upon the same principle, that of promoting friendship among the students and interest in their studies. There are eighteen of these clubs in all, and each one is under the direction of a faculty sponsor.

Each department in the school sponsors an organization. The language clubs encourage interest by foreign correspondence, lectures, plays, and newspapers. The French and Spanish clubs each present one play a year. The Latin club sponsors the *Loquax*, and the Spanish club edits *El Herald*. These are both annual newspapers.

For the students interested in art there is the Greenwich Villagers, a club which sponsors a senior art contest each year, and provides dolls for children in institutions at Christmas.

The Central High Players, composed of dramatic students, produce two worthwhile plays a year. These are given in our own auditorium, and are supported by the student body.

There are two organizations in connection with the history department, the Lininger Travel club, which provides lectures on travel for its members and promotes charity work, and the Project committee, whose members construct historical projects. The collection of projects, housed in Room 130, consists of about six hundred sets, which are often on exhibition.

The Home Economics group studies social problems at its meetings, and makes over old clothes for the poor. The Girls' Athletic association is an organization of girls interested in athletics. There are many other departmental clubs for pupils interested in the various subjects.

Among the service organizations of the school are the Student Control, which preserves order in the lunch room and in the halls, assists the librarians and tutors backward students; the Titians, a group consisting entirely of red-haired girls, who offer their services by ushering at all Central High performances, excluding the Road Show; the Central Committee, which provides ink for all the study halls.

Central's largest activity club is Central Colleens. This society is divided into various committees, the most important of which is the Big Sister group. These girls play big sister to the incoming freshman girls, show them their classrooms, explain the school rules, and extricate them from their difficulties. This organization also sponsors charity work and teas.

This past year, because it was believed that too many activities were carried by students and not enough attention was given to studies, each pupil was permitted membership in only one club. The second Tuesday in each month was set aside as club day, and the clubs met on that night.



**STUDENT CONTROL**

Pollard, J. Eller, Guenther, Bane, E. Allen, Flynn, Nelson, Hubbard, Fawcett, Abboud, Frohardt, Hennings, Swanson, Robertson, Fletcher, Hughes, Strauss, Silverman, Rosenbaum, Knutzen, Noe, Lambert, Baum, Major, Katskee, Smith, Kelly, Byrd, Powell, Johnson, Ackerman, Resnick, Rubnitz, Wolcott, Chadwell, Millman, Monovitz, Foster, Wiese, McDonald, R. Eller, Combs, Hypse, Dodson, Klaiman, H. Hindman, Fales, Cochran, Farber, B. Thorpe, M. Thorpe, Marr, Myers, Churchill, Mrs. Jensen, Rothkop, Whitebook, White, Schneider, Nall, Rehtmeyer, M. Anderson, C. Hindman.



**STUDENT CONTROL**

Samuelson, Dergan, Korisko, Luikhart, Wohl, Hesler, Civin, Morris, Towey, Goos, Westcott, Crouse, Osborne, Gordon, Holland, Tatelman, Bishop, Berner, Buckland, Cockle, Miloni, Gemma, Lipari, Hansen, Malkin, Mills, Hunter, Sheridan, Gerye, Marconnit, Knapp, Polonsky, Schwartz, Weiner, Stein, Arthur, Smith, Harriss, Nilsson, Fore, Sheehan, Duffield, V. Anderson, Arbitman, J. Lipp, Slutsky, Harris, Gogela, Nieman, Perkins, Woods, Rosicky, Francis, Lazerson, Glasson, Dansky, Fiedler, McGrane, Binkley.





**CENTRAL COLLEENS**

C. Hindman, Hultman, Petty, Prime, Dulin, E. Smith, Rosewater, Noe, O'Hanlon, Pritchard, Silverman,  
 M. Wolfson, Winget, Emmert, Resnick, Henningson, Fisher, Rubnitz, H. Hindman, D. Holmstrom,  
 Schneider, Reynolds,  
 Gilbert, Baily, Buckland, Nolan, Patrick, Nilsson, Byrd, Slutsky, Beerman, Kovitz.



**CENTRAL COLLEENS**

Shields, Major, Katskee, H. Klammer, Costanzo, Elmborg, Hunter, Nussrallah, Slemp, Robertson,  
 Yousem, Bane, Lipsey, Sheehan, Polonsky, Sheridan, Kulakofsky, Wingo, Ackerman, Resnick,  
 Arbitman, H. Thomas, E. White, M. Klammer, Daugherty, Locke, Christopher, Fawcett, Osoff, M. Kelly.



**CENTRAL COLLEENS**

Mailand, N. Baum, Lovgren, McWilliams, Thorson, Amos, Strauss, Klaiman, H. Baum, Frank, Lazerson, Rainey, Weiner, Blumenthal, Monovitz, Rychly, E. Holmstrom, G. Silverman, Streeter, Tatelman, Fishberg, Richards.  
 S. Larson, M. Saxe, Suing, D. Graham, Marconnit, B. Robinson, D. McDonald, Coren, Resnick, Kirshenbaum, Vogel.



**LININGER TRAVEL CLUB**

Roeder, Cary, Ramsey, Busch, Lambert, J. Smith, C. Hindman, Petty, H. Hindman, Resnick, Kraus, Emmert, Armstrong, Shuler, Rubendall, Reynolds, Rahel, Reynolds, Malm, Byrne, Pratt, Eyre, Goetz, Beavers, Sommers, Arbitman, Berkowitz, Bergman, Rosenfeld, Dodson, Kennedy, Byrd, McClure, Holman, Wightman.  
 Osoff, Otis, Daugherty, Locke, Eldridge, Vance, Tunison, Nilsson, Fore, Bichlmeir, Kelly, McDougal.





**MATHEMATICS SOCIETY**

Wolfe, Reuben, Row, Thomson, Pilling, Rodwell, Weinstein.  
 Dodds, Storm, Traub, Wendell, Langdon, Sandham, Bunce, Macduff.  
 Miller, Hurtz, Garver, Beeson, Cotton, Vogle, Larson, White, Troia.



**PROJECT COMMITTEE**

Putman, W. Parkinson, J. R. Lipari, Knudson, J. V. Lipari, Jensen, Burt, Bosin, Tate, Hill.  
 Peterson, Chamberlain, Cooper, Perdham, Rushton, Gallup, Bradford, Holzhausen, Jones, Bremman.  
 Miss Clark, Donaley, Enson, Beeson, Saxon, M. Parkinson, Howley, Maag, Hughes, Johnson.





**LOS SABIOS**

Leon, Ritchie, Bentley, Melcher, Thompsen, Civin, Anderson, Severinsen, Noble,  
Hornstein, Polyzois, Bolker, Schwartz, Fried, Wiener, Whitebook, Kelleher,  
Marsh, Bertagni, Ross, Wiesman, Rohlf's, Polonsky, Miloni, Mach.



**LATIN CLUB**

Harris, Jorgenson, Morris, Dergan, Abbott, Heady, Patterson, Moise, Gogela, Bosin, Williams, Burton,  
Osborne,  
Soshnick, Sherman, Dansky, Arbitman, Youngstrom, Smith, Petersen, Nelson, Laferla, Kirshenbaum,  
Resnick, Hennings,  
Domke, Young, Wiese, Souby, Tarnoff, Chamberlin, Moran, Christopher, Phillips, Dyer, Gist, Frohardt,  
Higgins, Hanson, Stone,  
H. Lewis, Bode, Crowley, Bennett, Dayton, Ackerman, Green, Ruhnitz, C. Smith, Seybold, McCullough,  
McCarthy, Parks, Kilbourne, Crites, Swoboda, McDonald, May,  
Hodek, Coren, Klaiman, Dulin, Fuller, Robison, Uren, Rohrbaugh, Aiken, Resnick, McNulty, McGee,  
Johnson, Gottburg, Gerke, Hennings.



**LE CERCLE FRANCAIS**

Kulakofsky, P. Friedman, R. Friedman, S. Gilbert, Pepper, Lazerson, Sturtevant, Stafford, Klopp, Sachs,  
 Heagey, Patton, Gould, J. Dodds, M. Dodds, Prichard,  
 Bordy, Odds, Henningson, Daugherty, Tarry, Klammer, Eldridge, Weaver, Moeller, Myers, Cherniss,  
 Wood, Anderson,  
 Allen, Lewis, Patrick, Conlin, Beaton, Gordon, Blaufuss, Barr, Miss Bozell, Lindquist, Kitchen, Bickel.



**GENTLEMEN'S FRENCH CLUB**

McManus, Nash, Ogilvie, Row, Pilling, Brookman, Hayward,  
 Vuylstek, Kellstrom, Eisenstatt, Allgaier, Rodwell, Kaplan, Senter,  
 Holland, Wetherell, Clarke, Miss Bozell, Sears, Tatelman, Nieman.





**GREENWICH VILLAGERS**

Curd, Munkof, Knudsen, Funder, Buettenback, Hall, Ballantyne, Fahnstock,  
 Singer, Kulakofsky, Berkowitz, Goldsmith, Kavan, Gaughran, Wigton,  
 Hammer, Silvio, Fuller, Indoe, Nall, Rhetmeyer, Twiss, Austin, Johnson.



**GIRLS' ATHLETIC ASSOCIATION**

Watkins, R. Kuehl, Kennedy, Tauchen, Thorson, W. Andersen, Chadwell, Okerstrom, Guenther, J. Lawson,  
 M. Saxton, R. Saxton,  
 Hubbell, Clayton, E. Anderson, Thomas, R. Wolfson, L. Wolfson, Wiesman, Jarnagin, Caveye, Hughes,  
 E. Kuehl, Keeley, Eusminger,  
 M. Born, Mailand, L. Weiner, D. Born, Glasson, Barrett, Brawner, Borman, Burt, Lazerson, M. Weiner,  
 Frank,  
 Rosen, L. Miller, Torrey, Gill, Payne, Hassert, Jorgensen, Fletcher, Nolan, Reynolds, Appleby, Levenson,  
 Yergey, A. Horejs, Dailey, Laytin, Graves, L. Bexten, Funder, Morton, Mrs. Meier, Jones, Carlson,  
 J. Bexten, Yaffe, Blumenthal.





**CENTRAL HIGH PLAYERS**

Perley, Field, Cooper, Bednar, Lima, Hosman, Devereux, Hamilton, Wilson, Morris,  
 Tullis, Lerner, Weaver, Allis, Stearns, Devaney, Olsen, Krammer, Nelson, Hubbard, Heflin,  
 Rivett, McFarland, Grelscl, Van Buskirk, Kuhle, Cockle, Stone, Smith, Harris, Thomas, Ernst, Hirs, Koory,  
 Hopkins, Eller, Votava, Hart, Geryc, Marconnit, Hultman, Rosewater, Caniglia, Bredin, Winget,  
 Schryver, Bane, Poole, Cornick, Burnett, Sheehan, Mossman, Rothkop, Anderson, Slutsky, Schneider,  
 Thomsen, Elarth, Bray,  
 Marr, Finer, Torrey, Backlund, Geshater, Eisman, Parkinson, Howley, Bauer, Horejs, Strauss, E. Thomsen,  
 Sawtell, Gerke.



**TITIANS**

Doran, Poole, Atwood, Knapp, Kennedy, Hughes, Nolan, Byerly, McArthur, Brugman, Ross,  
 Gee, Mills, Cole, Tholl, Goldsmith, Winget, Peake, Zook, Hollingshead, Ashwood,  
 Silverman, Linville, O'Haulon, Smith, Whitebook, Stone, Mrs. Jensen, Byrd, Prime, Duda, Robinson.



**ORCHESTRA**

Rushlau, Piccola, Morris, Bialac, Coëen, Soshnik, Cleaveland, Almond, Tarpeneing, Jensen, Smith, Anderson,  
 Duff, Phillips, Swoboda, Weiner, Kaster, Cockle, Rowley, Dignotti, McDonough, Nourse, Rohde,  
 Christensen, Basso, Hornstein, Kuhle, Christina, Kvetensky, Wyrick, Campbell, Wolfe, Moore, Fancuillo,  
 Kulesh.  
 Jones, Ewing, Fiedler, Holmstrom, Bentley, Rees, Churchill, Saxton, Carter, Amos, Baysdorfer.  
 Not in picture: Clark, Wolfson.



**HOME ECONOMICS**

Deaton, Merchant, Fuller, Ackerman, Skans, Jones, Callan, Swartzlander,  
 H. Backlund, D. Backlund, Patterson, Piesch, Goodsell, Prihoda, Backstrom, Stockard, Peake,  
 Sterling, Abboud, Mills, Cooper, Green, Armstrong, Bickel, Whitney, Louis.





*Ideal Central Boy  
Most Personality*

*Ideal Central Girl  
Most Sophisticated*

*Prettiest Girl*

*Best Looking Boy*

*Best Girl Artist*

*Best Boy Artist*

*Best Line  
Most Romantic*

*Best Dressed Boy*

*Best Dressed Girl*

*Best Cave Man*

**FOUR PERSONALITY GIRL**  
ON OUR STAGE

*Most Popular  
Wittiest  
Sweetest  
Most Personality*

*Best Line*

*Best Athlete*

*Peppiest*

*Most Likely to Succeed*

*Best Dancer*

*Best Dancer*

*Most Popular Boy  
Best Athlete*

*P. B. Pfeiffer*



AUTOGRAPHS