

1
3
3





O-BOOK

Central High School

SENIOR CLASS



OMAHA, NEBRASKA

VOLUME XLVII

1933



STAFF

EDITOR IN CHIEF

RALPH W. JONES

ASSOCIATE EDITORS

WINDSOR G. HACKLER

DAN HARRISON

JOHN JANECEK

ELIZABETH PINDEERO

BETTY ROSS

MABEL WRIGHT

ART EDITOR

HOMER FROHARDT

CIRCULATION MANAGER

ROBERT BRAUN

BUSINESS MANAGER

WILLIAM B. HART

LITERARY ADVISER

ANNE LANE SAVIDGE

ART ADVISER

MARY L. ANGOOD

BUSINESS ADVISER

ANDREW NELSEN



CONTENTS

PART I

ADMINISTRATION
SENIOR ALBUM

PART II

HONORS
MUSIC
MILITARY
ATHLETICS

PART III

CLUBS
CARTOON



EAST ENTRANCE — AUDITORIUM
CENTRAL HIGH SCHOOL.



JOSEPH G. MASTERS
PRINCIPAL



FRED HILL

ASSISTANT PRINCIPAL
DEAN OF BOYS



JESSIE M. TOWNE

ASSISTANT PRINCIPAL
DEAN OF GIRLS



DR. H. A. SENTER

DEAN OF FACULTY

CENTRAL HIGH SCHOOL FACULTY

FRED HILL
ASSISTANT PRINCIPAL
DEAN OF BOYS

JOSEPH G. MASTERS
PRINCIPAL
DR. H. A. SENTER
DEAN OF FACULTY

JESSIE M. TOWNE
ASSISTANT PRINCIPAL
DEAN OF GIRLS

ENGLISH

SARA VORE TAYLOR
BERTHA NEALE
TILLIE C. ANDERBERRY
NELL BRIDENBAUGH
JULIA T. CARLSON
ELSIE C. FISHER
GRACE GILBERT
AUGUSTA KIBLER
GRACE HOLMES McMANUS
MARGARET MUELLER
HELEN SOMMER
LOUISE STEGNER
MARTINA SWENSON
JESSIE M. TOWNE
IDA A. WARD
ALICE WEST

MATHEMATICS

ANDREW NELSEN
AMANDA E. ANDERSON
G. E. BARNHILL
R. B. BEDELL
L. N. BEXTEN
MAYBEL BURNS
GRACE FAWTHROP
FRED HILL
PEARL JUDKINS
SARAH RYAN

HISTORY

GENEIVE W. CLARK
IRMA COSTELLO
MARY E. ELLIOTT
EDITH C. FIELD
ELSIE C. FISHER
JULIETTE GRIFFIN
ELIZABETH KIEWIT
MARY A. PARKER
NELLE RANDALL

MODERN LANGUAGES

BESS M. BOZELL
BARBARA A. CHATELAIN
EVA M. ERIXON
ELLA L. PHELPS
PEARL ROCKFELLOW
MARGARITA VARTANIAN

LATIN

BERNICE S. ENGLE
ELIZABETH E. CRAVEN
JANE T. FULTON
BESSIE E. RATHBUN

PHYSICAL SCIENCE

DR. H. A. SENTER
F. H. GULGARD
J. G. SCHMIDT

NATURAL SCIENCE

CAROLINE E. STRINGER
JENNIE E. HULTMAN
HELEN LANE

SOCIAL SCIENCE

AUTUMN DAVIES
IRMA COSTELLO
F. Y. KNAPPLE

DEBATE

SARAH A. RYAN

EXPRESSION

MYRNA V. JONES
DORIS H. HAHN

MUSIC

CAROL MARHOFF PITTS
IRENE HASKINS JENSEN
ELSIE HOWE SWANSON
HENRY G. COX

MECHANICAL DRAWING

O. J. FRANKLIN

MANUAL TRAINING

L. N. BEXTEN

ART

MARY ANGOOD

JOURNALISM

ANNE LANE SAVIDGE

COMMERCIAL

EDNA S. DANA
WILMA COOPER
FLORENCE DOTY
GRACE KNOTT
HARRIET RYMER
ANGELINE TAUCHEN

HOUSEHOLD ARTS

CHLOE E. STOCKARD
DOROTHY HILE
RUBY RICHARDSON

PHYSICAL TRAINING

GLEE G. MEIER
JOHN B. SCOTT

CAFETERIA

RUBY RICHARDSON

LIBRARY

ZORA SHIELDS
C. S. BLANCHARD
HAZEL CRANDALL

OFFICE

BESSIE GALLAGHER
JENNIE ROBERTS
RUTH KRCAL

REGISTRAR

ADRIAN WESTBERG

CLERK OF BOOKROOM

PAULINE HARTNETT





HOFFCHARDT





JACK DOUGLAS

PRESIDENT, JUNE

Boys' O-Club (2,3,4), President (4); Football (1,2,3,4); Gym Club (3); Boys' Senior Glee Club (2,3); Swimming (2,3); Regiment (1,2,3); Road Show (2); Opera (2); Boys' Junior Glee Club (1).



WILLIAM BEST

VICE PRESIDENT, JUNE

Boys' O-Club (4); Stage Crew (3,4); Track (1,2,3,4); National Athletic Honor Society (4); Basketball (1,2,3,4); Football (1,2,3,4); Regiment (1,2).



JEAN WOODRUFF

SECRETARY, JUNE

Economics Club, Vice President (4); Central Colleens (4); Central Committee (4); Los Sabios (3,4); Senior Play (4); Lininger Travel Club (4).



ROBERT BRAUN

TREASURER, JUNE

Regiment (1,2,3,4), Captain (4); C. O. C., Treasurer (4); O-Book Staff, Circulation Manager (4); Rifle Team (3,4), Captain (4); Mathematics Society (3,4), Treasurer (4); Senior Play (4); Atlas Club (3,4), President (3); Hi-Y (1,2,3,4), President (4); Library Monitor (4); Tennis Tournament (3); Football (3,4); Road Show (4); Speakers' Bureau (1,2,3); Golf Tournament (2,3); Track (2); Basketball (1,2); Inter-Club Council (2).



WINIFRED HARRIS

SENIOR CLASS REPORTER
NATIONAL HONOR SOCIETY

Register Staff (4); Library Monitor (4); Monitors' Council (4); Quill and Scroll (4); Central Colleens (2,3,4); French Play (4); Senior Play (4); Make-up (4); Girls' Senior Glee Club (3); Reviewers' Staff (3).



JACK MERRITT

PRESIDENT, JANUARY

Central High Players (4); Road Show (4); Regiment (2,3).



JESS GAMBLE

VICE PRESIDENT, JANUARY

Orchestra (2,3,4), President (4); Biology Round Table (1); Road Show (2); Regiment (1,2,3).



ELOISE POUNDS

SECRETARY, JANUARY

Library Monitor (4); A Cappella Choir (3,4); Student Control (3); Girls' Senior Glee Club (2,3); Boosters' Club (1,2); Opera (3).



JEANNE BIURVALL

SERGEANT AT ARMS, JUNE

NATIONAL HONOR SOCIETY

Register Staff, Advertising Manager (4); Quill and Scroll (4); Library Monitor (4); Le Cercle Francais (3,4); Central Colleens (1,2,3,4); Road Show (2,3); Girls' Natural Science Club (2); Girls' Junior Glee Club (1).



WILLIAM HAMILTON

SERGEANT AT ARMS, JUNE

Regiment (1,2,3,4), Captain and Ordnance (4); C.O.C. (4); Library Monitor (4); Road Show (4); Golf (2,3,4); Boys' O-Club (3,4); Basketball (1,2) Hi-Y (1,2), Vice President (2); Football (1,2); Speakers' Bureau (1).





ROBERT ADWERS

Regiment (1,2,3,4), Second Lieutenant (4); C.O.C. (4); Central Committee (4); Road Show (4); Speakers' Bureau (2).



WILLIAM AIKIN

Regiment (2,3,4), Sergeant; Library Monitor (4); Student Control (4); German Club (4); Hi-Y (4); Track (4); Boosters' Club (3,4).



PHILLIP AIKEN

French Play (4); Costumes (4); Boys' Junior Glee Club (4); Student Control (3); Regiment (1,2).



ROSS ALEXANDER

Regiment (1, 2, 3, 4), Captain and Personnel Adjutant (4); C. O. C. (4); A Cappella Choir (4); "First Night" (4); Senior Play (4); Hi-Y (1,2,3,4); Crack Platoon (3); Tennis (3); Boys' Senior Glee Club (2); Opera (2); National Music Supervisors' Convention (2); State Music Contest (2); Boys' Junior Glee Club (1); Speakers' Bureau (1).



HARRY ALTSULER

Boys' O-Club (3,4); Baseball (2,3,4); Basketball (2,3,4); Football (1, 2,3,4); Regiment (1).



ARTHUR AMOS

Regiment (1,2,3,4), Second Lieutenant (4); C.O.C. (4); Boys' Junior Glee Club (4); Boys' O-Club (4); Library Monitor (4); Swimming (3,4); Track (3,4); Los Sabios (2,3); Mathematics Society (2,3); Speakers' Bureau (2,3).



ISABEL AMOS

Greenwich Villagers (4); Central Colleens (4); Girl Reserves (4); Domestic Science Club (4); Biology Round Table (3); Girls' Natural Science Club (3).



BETTY ANDERSON

Library Monitor (4); Make-up (4); Girls' Junior Glee Club (2,3,4); Central Colleens (3).



FLORENCE APPLEMAN

Le Cercle Francais (4); Library Monitor (4); French Play (3); Make-up (2).



DOROTHY AURACHER

NATIONAL HONOR SOCIETY

Library Monitor (4); Monitors' Council, *President* (4); "First Night" (4); Senior Play (4); Central Colleens (3,4); Student Control (3,4); Treasurer (4); Central High Players (3,4); Mathematics Society (3,4); Junior Honor Society (3); Boosters' Club (2,3), Sergeant at Arms (2); Inter-Club Council (2); Make-up (2).



MARJORIE BACKSTROM

NATIONAL HONOR SOCIETY

Linger Travel Club (4); Girls' Natural Science Club (2,3,4); Domestic Science Club (4); Library Monitor (4); Junior Honor Society (1, 2, 3); Central Colleens (1, 2, 3); Student Control (3).



EDGAR BAIRD, JR.

Regiment (1,2,3,4), First Lieutenant (4); C.O.C. (4); Hi-Y (1,2,3,4); Atlas Club (2, 3); Loquax (3); Boosters' Club (2,3); Junior Honor Society (1).



FLOYD BAKER

Regiment (1,2,3,4), Second Lieutenant and Quartermaster (4); C.O.C. (4); Monitors' Council (4); Library Monitor (4); Central Committee (4); Boosters' Club (1,2,3,4), Secretary (2), President (3); Baseball (2).



JOE BARKER

Tennis (1,2,3,4), Captain (4); Boys' O-Club (1,2,3,4); Regiment (1,2).



ROBERT BAUDO

Boys' O-Club (4); Baseball (2,3,4); Library Monitor (4).



JANE BAUM

Central Colleens (3); A Cappella Choir (2,3); National Music Supervisors' Convention (2); Opera (2); Girls' Natural Science Club (2); Girls' Senior Glee Club (2); Girls' Junior Glee Club (1).



REVA BERNSTEIN

Register Staff (4); Library Monitor (4); Home Economics Club (4); Central Colleens (3,4); Make-up (3); Swimming (3); Girls' Junior Glee Club (3); Loquax (3).



RICHARD BICKEL

NATIONAL HONOR SOCIETY

O-Book Staff (4); Speakers' Bureau (4); Library Monitor (4); Student Association, Advertising Manager (4); Art Honor Roll (4); Student Control (3); Biology Round Table (2,3), Vice President (3).



IRVIN BIRGE

Boys' O-Club (2,3,4); Athletic Manager (4); Football (1, 2, 3, 4); Engineer (3,4); National Athletic Honor Society (3,4); Junior Honor Society (3); Basketball (1,2,3); Baseball (2,3); Track (1); Regiment (1).



ROBERT BITTNER

Regiment (1,2,3,4), Captain (4); C. O. C. (4); Library Monitor (4); Monitors' Council (4); Road Show (4); Central Committee (3,4); Los Sabios (3,4); Speakers' Bureau (3).





JOHN BLACKBURN

Boys' O-Club (2,3,4); Track (4);
Football (1,2,3,4).



ESTHER BLISS

Library Monitor (4); Le Cercle
Francais (3,4); Senior Play (4);
French Play (3,4); Central Commit-
tee (3,4); Lininger Travel Club
(2,3); Road Show (3).



HAROLD BLOCH

Library Monitor (4); Wrestling (3);
Regiment (1,2).



MARGARET BOCK

Monitors' Council (4); Library
Monitor (4); Greenwich Villagers
(3); Titans (1,2,3,4).



LAWRENCE BORDY

NATIONAL HONOR SOCIETY

Register Staff, Assistant Editor (4);
Student Control (4); Library Monitor
(4); Monitors' Council (4);
Mathematics Society (4); French
Play (3,4); Discussion Club (4);
Reviewers' Staff (3); Gentlemen's
French Club (3,4); Junior
Honor Society (2,3).

NAOMI BORDY

Library Monitor (4); Girls' Senior
Glee Club (4); Girls' Junior Glee
Club (3); Central Colleens (3);
Inter-Club Council (3); Road
Show (3).



CYRUS BOWMAN

Regiment (1,2,3,4), Second Lieuten-
ant (4); C.O.C. (4); Senior Play
(4); Library Monitor (4); A Cap-
pella Choir (3,4); Los Sabios (3);
Opera (3,4); Central High Players
(4); Biology Round Table (2,3,4);
Vice President (4); Boys' Senior
Glee Club (3); Boys' Junior Glee
Club (2); Speakers' Bureau (1,2,3).



MIRIAM BRADLEY



GEORGE BRAIG

NATIONAL HONOR SOCIETY

Regiment (1,2,3,4), Captain and Ad-
jutant (4); C.O.C. (4); Engineers
(4); Road Show (4); Track (4);
Los Sabios (3,4), Sergeant at Arms
(3), Vice President (4); Atlas Club
(3); Speakers' Bureau; Library
Monitor (2).



JOHN BRAIN

Regiment (1,2,3,4), Captain (4); C.
O.C., Sergeant at Arms (4); En-
gineers (3,4), Captain (4); Library
Monitor (4); Road Show (4).





FAY BROAD

Tennis (4); Library Monitor (4); Home Economics Club (4); Student Control (4); Girls' Junior Glee Club (3); Basketball (2,3); Volleyball (3).



RICHARD BROCK



VIOLA BROOKS

Home Economics Club (4); Chorus (2).



PATRICIA BROTT

Titians (1, 2, 3, 4); Lininger Travel Club (3,4); Student Control (4); Le Cercle Francais (4); French Play (4); Library Monitor (4).



CONRAD BUELL

NATIONAL HONOR SOCIETY

A Cappella Choir (3, 4); Speakers' Bureau (3,4); Boys' O-Club (3,4); Opera (4); Road Show (4); Boys' Senior Glee Club (3); Boys' Junior Glee Club (3); Male Quartet (3,4).



SARAH CAMPAGNA

Baseball (3); Tennis (3); Basketball (3); Hockey (3); Volleyball (3).



SEBASTIAN CAMPAGNA

Library Monitor (4); Boys' O-Club (2,3,4); Wrestling (2,3,4); Los Sabios (2,3); Junior Honor Society (2,3); Football (3); Regiment (1,2).



JANET CAMPBELL

O-Book Staff (4); Register Staff (4); Library Monitor (4); Swimming (4); Lininger Travel Club (3, 4); Central Colleens (2, 3, 4); Le Cercle Francais (4); Central High Players (4); French Play (4).



RICHARD CAREY

Register Staff (4); Library Monitor (4); Central High Players (4); Senior Play (4); "First Night" (4); Regiment (1,2,3); Boys' Junior Glee Club (1,2); President (1); Atlas Club; Secretary (1).



OSCAR CARP

Library Monitor (4); Orchestra (1, 2, 3, 4); Forensic Society (2, 3, 4); Discussion Club, Vice President (4); Opera (3,4); Road Show (4); Tennis (3,4); Junior Honor Society (2, 3); Debate Squad (2,3); Student Control (3); League of Nations Contest (2); Regiment (1,2).





SIDNEY CHAIT

Register Staff, Circulation Manager (4); Senior Play (4); Football (2, 3); Boys' Junior Glee Club (2); Regiment (1,2).



DUCILE CHAMBERS

Make-up (4); Swimming (4).



JOEL CHERNISS

Debate (1,2,3,4); Forensic Society (1,2,3,4); Secretary-Treasurer (4), President (4); Discussion Club, President (4); Library Monitor (4); Declamatory Contest (3,4); Regiment (1,2).



JOHN CHILDE

Regiment (1, 2, 3, 4), Sergeant (4); Speakers' Bureau (3,4); Atlas Club (3); Biology Round Table (2).



BILL CHRISTIE

Golf (1,2,3,4); Football (1,3); Cheer Leader (4); Basketball (1,2,3); Regiment (1, 2, 3); Central Committee (3); Baseball (2); Boys' Junior Glee Club (1); Speakers' Bureau (1).



EVELYN CLARK



RAYMOND COFFEY

Boys' O-Club (3); Basketball (3); Regiment (1, 2); Baseball (1, 2); Boys' Junior Glee Club (1).



MARVA COHN

Library Monitor (4); A Cappella Choir (4); Student Control (4); Central Colleens (3); Girls' Senior Glee Club (2); Girls' Junior Glee Club (1).



DOROTHY COLLINS

Baseball (1,2,3,4); Basketball (2,3, 4); Hockey (3,4); Volleyball (3,4); Library Monitor (4); G.A.A. (2,3, 4); Girls' Senior Glee Club (3,4); Student Control (4); Opera (4); Swimming (3); Tennis (3); Der Deutsche Verein (3); Girls' Junior Glee Club (2); Gym Club (2).



SHELLEY CONDON

Football (1, 2, 3, 4), Captain (4); Wrestling, Captain (4); Boys' O-Club (1,2,3,4).



HAROLD COOPERMAN

Boys' Junior Glee Club (4).



JUNE CORKIN

Register Staff (4); Central Colleens (1, 2, 3, 4); Road Show (3, 4); Reviewers' Staff (3, 4); Central High Players (3, 4), Secretary (4); Make-up (3, 4); Library Monitor (4); French Play (3); Senior Play (4); Student Control (2, 3); Project Committee (1).



WILLIAM CORSON

Regiment (1, 2, 3, 4), Second Lieutenant (4); C. O. C. (4); A Cappella Choir (4); Road Show (2, 4); Opera (2, 3, 4); Boys' Senior Glee Club (2); Loquax (2); Latin Club (2); Boys' Junior Glee Club (2).



FRANK COWDERY

Regiment (1, 2, 3, 4), First Lieutenant (4); C. O. C. (4); Engineers (4); Road Show (2, 3, 4); Hi-Y (1, 2, 3, 4), President (3), Secretary (4); "First Night" (4); Senior Play (4); Library Monitor (4); Crack Squad (2, 3); Speakers' Bureau (1, 2, 3), Sergeant at Arms (2), Treasurer (3); Atlas Club (3); Tennis (3); Golf (3); Cheer Leader (1, 2); Mathematics Society (1, 2); Project Committee (1, 2); Basketball (1).



JAMES CRADDOCK

Regiment (1, 2, 3, 4), First Lieutenant (4); C.O.C. (4); Cheer Leader (2, 3); Football (3); Tennis (2, 3); Track (3); Discussion Club (3); Atlas Club (3); Speakers' Bureau (1, 2); Inter-Club Council (2).

MARADOR CROPPER

Register Staff (4); Road Show (4); Senior Play (4); Central High Players (4); Declamatory Contest (4); Make-up (4); Reviewers' Staff (3); Swimming (2).



JACK CROWLEY

Central High Players (4); Golf (4); Basketball (4).



EUGENIA D'ANDREA

Library Monitor (4); Opera (4); Road Show (4); "First Night" (4); Central Colleens (2, 3, 4); Student Control (2, 3, 4); Basketball (3, 4); Girls' Senior Glee Club (4); G.A.A. (2, 3, 4); Volleyball (2, 3, 4); Girls' Junior Glee Club (3); Girls' Natural Science Club (3); Senior Play (4).



MORRIS DANSKY

NATIONAL HONOR SOCIETY

O-Book Staff (4); Register Staff, Editor (4); Loquax, Editor (4); Quill and Scroll (4); National High Schools Awards (4); Library Monitor (4); Latin Club (2, 3, 4), Vice President (4); Mathematics Society (2, 3, 4); Reviewers' Staff (3); Student Control (3); Junior Honor Society (1, 2, 3); Latin Awards (2, 3).



DAESTA DEETER

A Cappella Choir (4); Opera (4); Girls' Senior Glee Club (3); Girls' Junior Glee Club (2); Freshman Glee Club (1); Stamp Club (1).





NEAL DELONG

Los Sabios (4); Student Control (3); Speakers' Bureau (3); Regiment (1,2).



CHANDLER DERBY

Regiment (1,2,3,4), Second Lieutenant (4); C.O.C. (4); Library Monitor (4); Road Show (4); Biology Round Table (2); Speakers' Bureau (1).



ELENA DEVANEY

Library Monitor (4); Student Control (4); G.A.A. (1).



CAROL DIMKE

Library Monitor (4); Road Show (4); Dramatics (3,4); Swimming (4); A Cappella Choir (4); Girls' Senior Glee Club (4); Der Deutsche Verein (1,2,3,4); Girls' Junior Glee Club (3); Central Colleens (1,2,3).



FLORENCE DOAN

Student Control (4); Road Show (4); Central Colleens (3); Girls' Junior Glee Club (1).

GARLAND EAYRS

Library Monitor (4); Central Colleens (4); G.A.A. (2,3,4), Sergeant at Arms (4); Swimming (2,4); Volleyball (3,4); Baseball (2,3,4); Home Economics Club (4); Hockey (2,3).



JACK EDDY

Regiment (1,2,3,4), First Lieutenant (4); C. O. C. (4); Library Monitor (4); Road Show (4); Student Control (3,4), President (4).



MYRTLE ELLIS



ELMER ENGELHARDT



JANE EPPLEN

Library Monitor (4); Declamatory (4); Senior Play (4); "First Night" (4); Road Show (4); Stagecraft (3,4); Make-up (2,4); Central High Players' (2,3,4); Stage Designer (4).





CARL ERICKSON

NATIONAL HONOR SOCIETY

Student Control (3,4); Basketball (1,4); Mathematics Society (2,3); Los Sabios (1,2,3), Vice President (3); Discussion Club (3); Library Monitor (3); Regiment (1,2); Junior Honor Society (1,2,3); Speakers' Bureau (2).



ADA MAE ERNST

Student Control (3,4); Opera (3,4); A Cappella Choir (3,4); Girls' Senior Glee Club (2,3); Girls' Junior Glee Club (2).



RUTH ESVELD



ARTHUR ETTER

Wrestling (4); Track (4); Library Monitor (4); Orchestra (1,2).



ALMA FEBLOWITZ

Central Colleens (1,2,3,4); G.A.A. (1,2); Girls' Natural Science Club (2).



FLORENCE FITZ-DOWD

French Play (4); Girls' Natural Science Club (4); Quill and Scroll (4); Boosters' Club (3); Central Colleens (3).



LORRAINE FLETCHER

Library Monitor (4); Volleyball (1,2); Basketball (1,2); G.A.A. (1); Baseball (1).



BETTY FLOTHOW

Girls' Junior Glee Club (4); Road Show (1).



GARRETT FONDA

Regiment (1,2,3,4), Captain (4); C. O.C. (4); Gentlemen's French Club (3,4), Vice President (4); Central Committee (3); French Play (2).



FRANCES FORE

Register Staff (4); Loquax (2,4); Latin Club (2,4); Linger Travel Club (2,3,4); Student Control (3,4); Reviewers' Staff (3); Library Monitor (3); Junior Honor Society (1,2,3); Latin Awards (2,3); Swimming (2); Project Committee (1).





BETTY FORMAN

Swimming (4); Girls' Junior Glee Club (2,3); Le Cercle Francais (3).



BERNARD FOX

Library Monitor (4); Wrestling (3); Regiment (1,2).



WILLIAM FRADENBURG

Gentlemen's French Club (3,4); Biology Round Table (2,3); Track (2,3); Regiment (1,2).



TECLA FREYER

Road Show (2,3,4); Opera (3,4); Make-up (2,3); Central Colleen (2,3); Greenwich Villagers (2,3); Speakers' Bureau (2).



STUART FRIED

Regiment (1,2,3,4), Sergeant (4); Library Monitor (4); Stage Crew (4); Student Control (3,4); Crack Platoon (3).



LLOYD FRIEDMAN

Register Staff (3,4); Boys' O-Club (2,3,4); Quill and Scroll (3,4); Tennis (1,2,3,4); Junior Honor Society (1,2,3); Reviewers' Staff (3); Mathematics Society (3); Basketball (1,2); Track (1).



HOMER FROHARDT

O-Book Staff, Art Editor (4); Greenwich Villagers (3,4), President (4); Art Honor Roll (1,2,3,4); Art Contest (2,4); National High School Awards (1,2,3); Orchestra (1).



MARGARET FRY

Library Monitor (4); Monitors' Council (4); A Cappella Choir (3,4); State Music Contest (3,4); Opera (3,4); Road Show (3,4); National High School Awards (3); Girls' Senior Glee Club (2); Girls' Junior Glee Club (1).



ROBERT FULLER

Student Control (3); Regiment (1,2).



MARIANA GARDNER

Opera (4); A Cappella Choir (3,4); Costumes (3,4); State Music Contest (3); Girls' Senior Glee Club (2); Girls' Junior Glee Club (1).





NELLIE GARROTTO

Student Control (4); Library Monitor (4); Los Sabios (4); G.A.A. (4); Swimming (3,4); Junior Honor Society (3).



KEN GLICKER

Der Deutsche Verein (4); Junior Honor Society (3).



ESTHER GOLDBERG

"First Night" (4); Library Monitor (4); Central Colleens (4).



ANNA GOODBINDER

Library Monitor (4); Art Contest (4); Central Committee (2, 3, 4); Inter-Club Council (3); Girls' Natural Science Club (2,3); Central Colleens (1,2).



MARJORIE GOODSSELL

Art Contest (4); Library Monitor (4); Liminger Travel Club (4); Domestic Science Club (3,4); Greenwich Villagers (3,4); Central Colleens (1,2,3,4), Sergeant at Arms (4); Student Control (3); Girls' Natural Science Club (2); Boosters' Club (1,2); G.A.A. (1).

BETTY GOULD

NATIONAL HONOR SOCIETY

Library Monitor (4); Register Staff (3,4), Advertising Manager (4); A Cappella Choir (3,4); Opera (2,3, 4); Quill and Scroll (4); Road Show (2,3,4); Student Control (3); Reviewers' Staff (3); Girls' Senior Glee Club (2); Girls' Junior Glee Club (1); G.A.A. (1); Hockey (1); Junior Honor Society (1).



LAWRENCE GREEN

Regiment (1,2,3,4), Second Lieutenant (4); C.O.C. (4); Register Staff (4); A Cappella Choir (3,4); State Music Contest (3); Reviewers' Staff (3); Inter-Club Council (2); Boys' Junior Glee Club (2); Latin Club (2).



HELEN GREENBERG

Girls' Junior Glee Club (2,4); Central Colleens (1); G.A.A. (1).



ADRIENNE GRIFFITH

Girls' Natural Science Club (4); Central High Players (4); Central Colleens (3); Boosters' Club (2); Baseball (1), Basketball (1).



UNA GROSS

German Club (4); Register Staff (4); Make-up (4); Girls' Senior Glee Club (4); Reviewers' Staff (4); Student Control (4); Debate Team (4); Forensic Society (2,3,4).





WINDSOR G. HACKLER

NATIONAL HONOR SOCIETY

Regiment (1,2,3,4), First Lieutenant and Adjutant (4); C.O.C. (4); Register Staff, Editor in Chief (4); O-Book Staff, Assistant Editor (4); Spanish Paper, Editor (4); Quill and Scroll (4); Library Monitor (4); Senior Play (4); Road Show (4); Beveridge Memorial Committee (4); Los Sabios (3,4), Secretary (3), President (4); American Legion Young Citizens' Contest (4); Mathematics Society (2,3,4), Sergeant at Arms (3), Chairman of Program Committee (4); Junior Honor Society (1,2,3); Hi-Y (1,2,3).



GEORGE HADDAD

Regiment (1,2).



BETTY HALL

NATIONAL HONOR SOCIETY

Library Monitor (4); Central Committee (3,4); Le Cercle Francais (3, 4), Secretary (4); French Play (4); Linniger Travel Club (4); Monitors' Council (4); Junior Honor Society (1,2,3); Loquax (3); Latin Club (1, 2,3); Student Control (2,3); Girls' Junior Glee Club (1,2); Inter-Club Council (2).



ROY HANEY

Central High Players (3,4); Senior Play (4); Boys' Senior Glee Club (3); Regiment (1,2); Boys' Junior Glee Club (2).



JAMES HANLEY

"First Night" (4).

FRANCES HANSEN

NATIONAL HONOR SOCIETY

O-Book Staff (4); Register Staff (3, 4), Editor (4); Loquax (3,4), Business Manager (3), Editor in Chief (4); Quill and Scroll (3,4); Junior Red Cross Representative (4); National High School Awards (4); Mathematics Society (1,2,3,4); Central Colleens (2,3,4); Latin Club (3, 4), Secretary-Treasurer (3), President (4); French Play (4); Junior Honor Society (1,2,3); Inter-Club Council (3); Reviewers' Staff (3); Student Control (2).



THOMAS HARKINS



LESTER HARMON

Library Monitor (4); Mathematics Society (4); Central High Players (2,3,4); Basketball (3); Regiment (1, 2, 3); Los Sabios (2, 3); Crack Platoon (3); Boys' Senior Glee Club (3); Boys' Junior Glee Club (1,2); Road Show (2).



MARY ANNA HARRINGTON

NATIONAL HONOR SOCIETY

Library Monitor (4); American Legion Young Citizens' Contest (4); Central Colleens (1,2,3,4); Student Control (2,4); Mathematics Society (2,3,4), Sergeant at Arms (4); Girl Reserves (1, 2, 3, 4); Junior Honor Society (2,3); French Play (3).



MARGARET HARRIS

Register Staff (4); Library Monitor (4); Mathematics Society (3,4), Sergeant at Arms (4); Central Colleens (1,2,3,4), Secretary (4); Quill and Scroll (4); Road Show (3,4); Le Cercle Francais (4); Girls' Junior Glee Club (1).



WILLIAM B. HART

NATIONAL HONOR SOCIETY

O-Book Staff (3,4), Associate Editor (3), Business Manager (4); Register Staff (2,3,4), Copy Reader (2), Editor (3), Business Manager (4); Purple and White Handbook, Editor in Chief (3); Los Sabios (2, 3, 4); Central Committee (2, 3, 4), Sergeant at Arms (2), Treasurer (3); Quill and Scroll (3,4); French Play (3,4); American Legion Young Citizens' Contest (4); Library Monitor (3); Junior Honor Society (1,2, 3); Student Control (2,3); Reviewers' Staff (3); Loquax (3); Opera (2); State Music Contest (2); Boys' Senior Glee Club (2); Boys' Junior Glee Club (1).



DAN HARRISON

NATIONAL HONOR SOCIETY

Regiment (1,2,3,4), Second Lieutenant (4); C.O.C. (4); O-Book Staff, Assistant Editor (4); Library Monitor (4); Central Committee (4); Mathematics Society (2,3,4), Treasurer (3,4); Junior Honor Society (1,3).



TOM HAYKIN

Regiment (1,2,3); Basketball (1,2); Baseball (1,2); Swimming (1); Boys' Rifle Team (1).



BETTY HELGREN

Make-up (4); Library Monitor (4); Central Colleens (3); Boosters' Club (1,2).



JACK HELGREN

Central High Players (4); A Cappella Choir (4); Senior Play (4); Make-up (3); "First Night" (4); Boys' Senior Glee Club (2,3); Opera (2); Regiment (1,2); Boys' Junior Glee Club (1); Cheer Leader (1); Swimming (1).



HELEN HENNINGSON

Home Economics Club (4); Girls' Senior Glee Club (3); Girls' Junior Glee Club (1,2); Stamp Club (1).



DORIS HEINTZE

Road Show (2,3,4); G.A.A. (2,3,4); Home Economics Club (4); Hockey (3); Girls' Senior Glee Club (3); Girls' Junior Glee Club (2); Basketball (2).



DOROTHY HEINTZE

Road Show (2,3,4); G.A.A. (2,3,4); Home Economics Club (4); Hockey (3,4); Girls' Senior Glee Club (3); Girls' Junior Glee Club (2); Basketball (2).



JUNE HOLST

Los Sabios (4); Home Economics Club (4); Road Show (2,3,4); G.A.A. (1,2,3,4); Make-up (4); Library Monitor (4); Gym Club (2); Basketball (1,2); Hockey (1,2).



TRUPELL HOLST

Los Sabios (4); Road Show (1,2,3, 4); Make-up (4); Library Monitor (4); Junior Honor Society (3); Home Economics Club (4); G.A.A. (2); Gym Club (2); Hockey (1,2); Baseball (1); Basketball (1,2).





HENRY HOFF

Regiment (1,2,3,4), Second Lieutenant (4); C.O.C. (4); Basketball (1, 2,3,4); Football (3,4); Boys' O-Club (4); National Athletic Honor Society (4).



JOHN HOLYOKE

NATIONAL HONOR SOCIETY

Regiment (1,2,3,4), Major (4); C.O. C., Vice President (4); O-Book Staff (4); Mathematics Society (2,3, 4), Treasurer (4); Hi-Y (3, 4), Treasurer (4); Track (4); Road Show (3,4); Atlas Club (3); Football (3); Junior Honor Society (1,2,3).



ISRAEL HORNSTEIN

NATIONAL HONOR SOCIETY

Library Monitor (4); A Cappella Choir (3,4); Discussion Club (4); Senior Play (4); Opera (4); State Music Contest (3); Football (3); Wrestling (3); Biology Round Table (2, 3); Atlas Club (2, 3); Junior Honor Society (1,2,3); Latin Awards (2); Boys' Senior Glee Club (2); Forensic Society (2); Freshman Glee Club (1).



ESTHER HORWITZ

Home Economics Club (4); Central Committee (2,3,4); Student Control (3); Girls' Natural Science Club (2, 3); Speakers' Bureau (1, 2, 3); A Cappella Choir (2,3); Central Colleens (1,2); Girls' Senior Glee Club (2); Boosters' Club (2); National Music Supervisors' Convention (2); Girls' Junior Glee Club (1).



ROBERT HOUSTON

Football (1,2,3,4); Chorus (2,3,4); Basketball (2,3,4); Athletic Manager (3); Baseball (1,2,3); Boys' Junior Glee Club (1).

JOHN HOWELL

Boys' O-Club (2,3,4), President (4); Baseball (2,3,4), Captain (4); Football (2,3,4); National Athletic Honor Society (2,3,4); Regiment (1).



ROBERT HOWSER

Library Monitor (4); Mathematics Society (4); Central High Players (2,3,4); Boosters' Club (1,2,3), Vice President (2), President (3); Boys' Rifle Team (1,2,3); Road Show (3); Football (3); Regiment (1,2); Junior Honor Society (1).



BETTY HOYT

O-Book Staff (4); Library Monitor (4); French Play (4); Lininger Travel Club (4); Central Committee (3,4); French Club (3,4); Loquax (3,4); Inter-Club Council (3); Student Control (2,3); Latin Club (1,2,3).



DONALD HUGHES

Regiment (1,2,3,4), Captain (4); C. O.C. (4); Boys' Junior Glee Club (1,2).



ROBERT HUGHES

Athletic Manager (4); Stage Crew (4); Boys' O-Club (3,4); Football (1,2,3,4); Track (1,2,3,4); Hi-Y (1, 2,3,4); Basketball (1,2,3); Wrestling (1,3); Atlas Club (3); Regiment (1,2); Tennis (1,2).





DEBORAH HULST

Register Staff (4); Library Monitor (4); Central Colleens (1,3,4); Lininger Travel Club (4); Senior Play (4); Inter-Club Council (4); Girls' Natural Science Club (3,4); French Play (4); Boosters' Club (2,3); Hockey (1).



JEAN HUMPHREY

Library Monitor (4); Central Committee (3,4); Senior Play (4); Le Cercle Francais (3,4); President (4); French Play (3,4); Lininger Travel Club (3).



MANNING HUNT

A Cappella Choir (4); Opera (3,4); Boys' Senior Glee Club (3); Boys' Junior Glee Club (1,2).



BARBARA HURT

Library Monitor (4); Swimming (3); Tennis (3); Central Colleens (1); Ping Pong Tournament (3).



MARCIA JACKSON

Road Show (2,4); Opera (4); Student Control (4); A Cappella Choir (4); Girls' Junior Glee Club (2).



JOHN JANECEK

O-Book Staff, Associate Editor (4); Register Staff, Sports Editor (4); Baseball Manager (4); Quill and Scroll (4); Atlas Club (2); Basketball (2,3); Baseball (2); Hi-Y (1,2); Regiment (1,2).



JEAN JANSEN



BERNICE JACOBOW

Home Economics Club (4); Central High Players (4); Library Monitor (4); Make-up (3); Forensic Society (2,3); Student Control (2); Girls' Junior Glee Club (2); Central Colleens (1,2).



DELORIS JARMIN



ANNA JENSEN





HOWARD JESPERSON

Library Monitor (3,4).



DORIS JOHNSON

Le Cercle Francais (4); Art Contest (4); Linger Travel Club (1,2,3,4); Secretary (4); Central Colleens (1,2,3,4); Secretary (3); Vice President (4); Greenwich Villagers (2,3,4); Student Control (3); Boosters' Club (2,3); Vice President (3); Hockey (1,2).



ELEANOR JONES

Central High Players (4); Los Sabios (4); Make-up (4); Swimming (3); Student Control (3).



ERNEST JONES

Los Sabios (1,2); Boys' Senior Glee Club (1,2); Opera (1); Swimming (4); Cheer Leader (1,2).



RALPH W. JONES

NATIONAL HONOR SOCIETY

Regiment (2,3,4); Second Lieutenant (4); C.O.C. (4); O-Book Staff, Editor in Chief (4); Register Staff (4); Senior Play (4); Central High Players (4); "First Night" (4); Library Monitor (4); Mathematics Society (3,4); President (4); Road Show (3,4); Quill and Scroll (4); Atlas Club (2,3); Secretary-Treasurer (3); Speakers' Bureau (2,3,4); Inter-Club Council (3); Reviewers' Staff (3); Tennis (3); Basketball (3); Swimming (2); Track (2,3).



WILLIAM JONES



PHIL KANI

Stage Crew (4); Chorus (4); Track (2); Boosters' Club (1,2).



HERBERT KAPLAN

Discussion Club (3,4); Vice President (4); Debate Team (3,4); Declamatory (3,4); Debate (1,4); Tennis (1,4); Forensic Society (1,3,4); President (4); Regiment (1,2); Crack Platoon (2).



SAMUEL KAPLAN

O-Book Staff (4); Register Staff (4); Library Monitor (4); Senior Play (4); Gentlemen's French Club (2,3,4); French Play (3,4); Advertising Manager (4); Junior Honor Society (3).



ROBERT KASAL

Boys' O-Club (3,4); Track (3,4); Football (3,4).





RICHARD KELLEY

Regiment (1,2,3,4), Lieutenant Colonel (4); C.O.C. (4); Engineers (4); Road Show (2,3,4); French Play (2,3); Hi-Y (1,2,3); Atlas Club (2,3); Crack Squad (2,3).



LANE KEMPER

Register Staff (3,4); Central High Players (4); Make-up (4); "First Night" (4); Reviewers' Staff (3).



KENNETH KERST

Library Monitor (4); Project Committee (3).



WARREN KIBBIE

Library Monitor (4); Baseball (1,2,3,4); Basketball (1,2,3); Atlas Club (1,2,3); Biology Round Table (2); Junior Honor Society (1).



CHARLES KING

Regiment (1,2,3,4), Second Lieutenant (4); C.O.C. (4); Road Show (4); Biology Round Table (2,3); Crack Platoon (2,3); Student Control (2).



ELEANOR KIRKPATRICK

Register Staff (4); Mathematics Society (3); Reviewers' Staff (3); Make-up (3); Girls' Junior Glee Club (1).



JOHN KOLBO

Central High Players (4); Opera (4); Road Show (4); "First Night" (4); A Cappella Choir (4); Senior Play (4).



ROSE KIRSCHENBAUM

Register Staff (4); Library Monitor (4); Forensic Society (3,4); Vice President (4); Mathematics Society (3,4); Student Control (3,4); Reviewers' Staff (3); Los Sabios (2,3); Girls' Junior Glee Club (2).



BEATRICE KOORY

O-Book Staff (4); Greenwich Villagers (3,4); Opera (2,3,4); "First Night" (4); Senior Play (4); A Cappella Choir (3,4); Central High Players (3,4); Art Contest (3); Girls' Senior Glee Club (2); Girls' Junior Glee Club (1).



RUSSELL KRECULOV

O-Book Staff (3,4); Greenwich Villagers (3,4); Art Honor Roll (2,3).





LEONARD KURTZ

NATIONAL HONOR SOCIETY
Football (4); Baseball (3,4); Junior Honor Society (2,3).



MARJORIE LANG

Road Show (4); Orchestra (4).



MARGARET LARSEN

Library Monitor (4); Dramatics (4); Central Colleens (3,4); Swimming (2,3).



PHILL LASEROWITZ

Library Monitor (4); Der Deutsche Verein (1,2,3,4), Secretary (3), Vice President (4); Mathematics Society (3,4), Vice President (3); Student Control (3,4); Quill and Scroll (3); Register Staff (3); Inter-Club Council (1,2); Baseball (1,2); Junior Honor Society (1,2).



LOREITA LAWSON

Library Monitor (4); Hockey (4); G.A.A. (1,2,3,4); Senior Play (4); Volleyball (1,2,3); Baseball (2,3,4); Tennis (3,4).



JULIUS LAZERSON

Forensic Society (1,2,3,4); Debate (1,2,3,4); Der Deutsche Verein (2,3,4), Sergeant at Arms (4); Regiment (2,3); Declamatory (2,3).



HOWARD LEE

NATIONAL HONOR SOCIETY
Library Monitor (4); Der Deutsche Verein (2,3,4), Vice President (4); Student Control (3,4); Inter-Club Council (3); French Play (3); Mathematics Society (3); Atlas Club (1,2,3), President (3); Biology Round Table (2,3); Junior Honor Society (2,3); Regiment (1,2).



THELMA LEE

Dett Choir (4); Library Monitor (4); Girls' Junior Glee Club (3); Baseball (3); Basketball (1,2); Volleyball (1,2).



RICHARD LEFLANG

O-Book Staff (4); Central High Players (4); Senior Play (4); Los Sabios (4).



DENA LEVEY

Library Monitor (4); Swimming (2).





ROBERT LLOYD

Regiment (1,2,3,4), Major (4); C. O.C., President (4); Road Show (3, 4), Manager (4); Hi-Y (1,2,3,4), Vice President (4); Central Committee (4); Engineers (4); Track (4); French Play (4); Crack Squad (3); Crack Platoon (2); Speakers' Bureau (2).



VIRGINIA LEE LONG

Student Control (4); Opera (4); Senior Play (4); Central High Players (3,4), President (4); Central Colleens (1,2,3,4); Make-up (2, 4); Dramatics (4); Declamatory (4); Road Show (2); Senior Play (2).



JANE LYNCH

Central Colleens (4); Linger Travel Club (2); Boosters' Club (2); Girls' Junior Glee Club (1); Opera (1).



JEANNE MACKLEY

Girls' Senior Glee Club (3); Opera (3); Girls' Junior Glee Club (2); Road Show (2).



BETTY JEAN MACUMBER

A Cappella Choir (2,3,4); Opera (2, 4); Road Show (2,3); Girls' Senior Glee Club (2,3); State Music Contest (3); Girls' Junior Glee Club (1).



ARTHUR MacDUFF



SOL MANN

Tennis (2, 3, 4); Wrestling (4); Mathematics Society (3); Track (1).



SYLVIA MAGZAMIN

Register Staff (4); Reviewers' Staff (3).



YOLANDA MANOLI

Swimming (4); Girls' Junior Glee Club (2).



TOM MARSHALL

Regiment (1,2,3,4), First Lieutenant (4); C.O.C. (4); Mathematics Society, Vice President (4); Gentlemen's French Club (4); Hi-Y (1, 2, 3, 4); Road Show (3,4); French Play (3, 4); Speakers' Bureau (2); Basketball (1).





ALFRED MARTIN

Regiment (1,2,3,4), First Lieutenant and Adjutant (4); C.O.C. (4); Engineers (3,4); Mathematics Society (2,3,4), President (4); Gentlemen's French Club, Treasurer (4); French Play, Manager (4).



DOROTHY MAYSTRICK

NATIONAL HONOR SOCIETY

Register Staff (4); Lininger Travel Club (3,4); Quill and Scroll (4); Central High Players (4); Library Monitor (4); Senior Play (4); Road Show (4); Central Colleens (2,3,4); Orchestra, Vice President (4); G.A. A. (2,3); Junior Honor Society (1,3).



GERTRUDE McCAW

Dett Choir (4); Chorus (3); Girls' Senior Glee Club (3); Girls' Junior Glee Club (2).



ROBERT McCLINTOCK

Mathematics Society (4); Regiment (3).



ELIZABETH McCREARY

Library Monitor (4); "First Night" (4); Central High Players (3,4); Road Show (4); Mathematics Society (3,4); Central Colleens (4); Student Control (3); Junior Honor Society (2,3); Boosters' Club (2,3); Girls' Senior Glee Club (2); Girls' Junior Glee Club (1).



PEGGY McMARTIN

NATIONAL HONOR SOCIETY

Road Show (4); A Cappella Choir (3,4); Opera (4); Senior Play (4); Junior Honor Society (1, 2, 3); State Music Contest (3).



DONALD MEYER



VIRGINIA MILLER

Central Colleens (3,4).



JOAN MILLIKEN

O-Book Staff (4); Senior Play (4); Student Control (4); Senior Play (4); Le Cercle Francais (4); French Play (4); Lininger Travel Club (3, 4); Central Committee (4); Mathematics Society (2,3); Stamp Club (1).



ROBERT McCUNE

A Cappella Choir (4); Senior Play (4); Road Show (4); "First Night" (4); Stagecraft (4); Boys' Junior Glee Club (2); Art Contest (2).



WEBSTER MILLS

Loquax (4); Library Monitor (4); Latin Club (4); Student Control (3, 4); Atlas Club (2,3); Mathematics Society, Sergeant at Arms (4); Junior Honor Society (1).



JOY MONSKY

Linger Travel Club (4); Monitors' Council (4); Library Monitor (4).



RUTH MOON

Library Monitor (4); Road Show (2,3,4); Student Control (4); Opera (3); Make-up (3); Girls' Senior Glee Club (2,3); Swimming (2); Girls' Junior Glee Club (1); Hockey (1); Basketball (1).



MARY ALLENE MOORE

Library Monitor (4); Central High Players (3,4), Treasurer (4); Senior Play (4); Road Show (4); Student Control (3,4); Make-up (4); "First Night" (4); Declamatory Contest (4).



HILL MOOSE

Library Monitor (4); Student Control (4); Golf (3,4); Basketball (3); Regiment (1,2); Baseball (2).



ROBERTA MORTON

Student Control (4); Girls' Junior Glee Club (2,3,4); Commercial Contest (3,4); Volleyball (1); Baseball (1).



CARMEN MOSS

Library Monitor (4); Senior Play (4); Swimming (3); Girls' Junior Glee Club (3).



FRANK MOSSMAN

Library Monitor (4); Senior Play (4); Central High Players (4); "First Night" (4); Der Deutsche Verein (4); Boosters' Club (2, 3); Treasurer (3); Opera (2); Boys' Senior Glee Club (2); Boys' Junior Glee Club (1); Stamp Club (1); Wrestling (1).



JIM MUSSELMAN

Senior Play (4); Athletic Manager (4); Basketball (1,2,3,4); Football (2,3,4); Stage Crew (3,4); Regiment (1, 2, 3); Senior Play (4); "Daddy Long Legs" (3); "The Rear Car" (3); Central High Players (3); Der Deutsche Verein (3); Track (3); Latin Club (2).



MARGARET MYERS

Library Monitor (4); A Cappella Choir (3,4); Road Show (4); Opera (3,4); State Music Contest (3,4); Make-up (3); Swimming (2,3); Girls' Junior Glee Club (2).





BEVERLY NELSON



FRANCIS NELSON

Opera (4); Road Show (3,4); Central High Players (4); Orchestra (4); Tennis (3,4); Regiment (3).



PAUL NIELSEN

NATIONAL HONOR SOCIETY

Orchestra (1,2,3,4), President (4); Student Control (4); Library Monitor (4); French Play (3); Junior Honor Society (1,2).



LILLIAN NILES

Library Monitor (4); Student Control (2,3); Central Colleens (1,2,3); Lininger Travel Club (1,2); Project Committee (1,2); Boosters' Club (1,2).



ALFRED NIXON

Regiment (1).



DICK NORTHCUTT

Road Show (3,4); Orchestra (3,4); Regiment (1,2).



ROBERT NUTTMANN



WILLIAM O'HANLON

Chorus (4); Baseball (1,2,3); Football (1,2,3).



GUINEVERE OHLSWAGER

Central High Players (4); Make-up (2,4); Senior Play (4); Declamatory (4); Stagecraft (3); Central Colleens (1,2).



MARIE PAKES

Girls' Senior Glee Club (4); Volleyball (3,4); Girls' Junior Glee Club (3); Swimming (1).





MARY PALMER

Road Show (4); French Play (4); Student Control (4); Le Cercle Francais (4); Central Colleens (2, 3); Mathematics Society (3); Girls' Junior Glee Club (1).



FRED PECHAC

Regiment (1, 2, 3, 4), Sergeant (4); Library Monitor (4); Student Control (4); Atlas Club (3).



WARREN PEMBERTON

Boys' O-Club (2,3,4); Chorus (1,2, 4); Track (1,2,3,4); Basketball (1,2, 3,4); Football (1,2,3,4); Wrestling (2); Regiment (1,2); Boys' Junior Glee Club (1).



SANFORD PERKINS

NATIONAL HONOR SOCIETY

Opera (4); A Cappella Choir (2,3, 4); Track (2,3,4); Basketball (1,2,3, 4); Mathematics Society (3); Boys' Senior Glee Club (2); Junior Honor Society (1,2,3); State Music Contest (3); National Music Supervisors' Convention (2); Regiment (1).



NOEL PERLEY

NATIONAL HONOR SOCIETY

Regiment (3, 4), First Lieutenant (4); C.O.C. (4); Swimming (4); Boys' O-Club (4); Junior Honor Society (3); Debate (3); Boys' Rifle Team (3,4).



PHYLLIS PETERSEN

Titians (1, 2, 3, 4), President (4); Central Colleens (1,2,3,4); Student Control (3,4); Girls' Natural Science Club (2,3,4), Secretary (4); Library Monitor (4); Lininger Travel Club (4).



ANTHONY PICCOLA

Regiment (1,2,3); Football (2,3,4); Project Committee (3).



FLOYD PIPER



ANNA PINDEERO

Chorus (4); Home Economics (4); Girls' Junior Glee Club (1,3); Gym Exhibitions (1,2); Gym Club (1,2); Swimming (2); Make-up (2); Junior Honor Society (3).



ELIZABETH PINDEERO

O-Book Staff, Assistant Editor (4); Home Economics Club, Secretary (4); Central High Players (3, 4); Make-up (2,3,4); Senior Play (4); "First Night" (4); "Daddy Long Legs" (3); Swimming (2); Glee Club Concert (1); Girls' Junior Glee Club (1).





KENNETH PLOSS

Orchestra (1,2); Regiment (1,2).



DAVID POWELL

Regiment (1,2,3,4), First Lieutenant (4); C.O.C. (4); Engineers (3,4); Crack Squad (3); Road Show (3,4); Basketball (1,2); French Play (2).



MARJORIE PRATT



GERALDINE PROS

Home Economics Club (4); Student Control (3,4); Gym Club (1,2); Gym Exhibition (1,2).



LEO QUINN

Library Monitor (4); Boys' O-Club (3,4); Football (1,2,3,4); Baseball (3,4); Basketball (1,4); Der Deutsche Verein (1,2,3); National Athletic Honor Society (3,4); Regiment (1,2).



CHARLES RACHMAN

A Cappella Choir (3,4); Central High Players (1,2,3,4); Student Control (4); Golf (2,4); Regiment (1,2,3); Boys' Senior Glee Club (2); Boys' Junior Glee Club (2); Biology Round Table (2).



DONALD RALYA

Boys' O-Club (2,3,4); Mathematics Society (3,4); Gentlemen's French Club (4); Boosters' Club (3); Junior Honor Society (3); Regiment (1,2,3); Swimming (1,2,3,4); Manager (4).



JAYNE RANDALL



CARLETON RANNEY

Regiment (1,2,3,4), Captain (4); C.O.C. (4); Engineers (4); Crack Squad (2,3,4); Gentlemen's French Club (3,4), President (4); Hi-Y (1,2,3,4); Central Committee (3,4); Road Show (2,3,4); French Play (3,4); Football (4); Track (4); Senior Play (4).



CHATHAM REDICK

Girls' Senior Glee Club (4).





CHARLOTTE REYNOLDS

Library Monitor (4); Girls' Golf Tournament (3,4); Student Control (2,3,4); O-Book Staff (4); Los Sabios (3,4); Tennis Tournament (4); Basketball (3,4); Junior Honor Society (2,3).



VIRGINIA RHODES

Library Monitor (4); Student Control (4); Opera (4); A Cappella Choir (3,4); Girls' Senior Glee Club (3); Girls' Junior Glee Club (2); Boosters' Club (2,3); State Music Contest (2).



CHARLES RICHARDSON

CARSON ROGERS

Library Monitor (4); Mathematics Society (4); Gentlemen's French Club (4); Los Sabios (2); Regiment (1,2); Orchestra (1,2); Boosters' Club (1).

MARGARET ROGERS

Library Monitor (4); Le Cercle Francais (3,4); French Play (4); Senior Play (4); Central Committee (3,4); Secretary (4); Girls' Junior Glee Club (3); Road Show (3); Girls' Natural Science Club (2,3).



ALBERT RIMMERMAN

Library Monitor (4); Orchestra (1,2,3,4); Tennis (1,2,3,4); Boys' O-Club (3,4); Road Show (1,2,3,4); Regiment (1,2,3); Der Deutsche Verein (3).

AMY ROHACEK

Library Monitor (4); Monitors' Council (4); Central High Players (2,3,4); Road Show (2,3,4); A Cappella Choir (4); Opera (3,4); Make-up (4); Girls' Senior Glee Club (3); Girls' Junior Glee Club (2,3); Boosters' Club (1,2).



RUTH ROBBINS

Junior Glee Club (4).

PAUL ROUDE

MARY ROHLE'S

Library Monitor (4); Central High Players (4); Senior Play (4); "First Night" (4); Boosters' Club (2); Central Colleens (1,2).





BETTY ROSS

NATIONAL HONOR SOCIETY

Library Monitor (4); French Play (4); O-Book Staff, Assistant Editor (4); Quill and Scroll (4); Register Staff (4); Der Deutsche Verein (2, 3,4); Central High Players (2,3,4); Senior Play (4); Inter-Club Council (1,2,3); Girls' Natural Science Club (1,2,4); Junior Honor Society (3); Boosters' Club (1,2,3); Project Committee (1,2).



SEBASTINO ROSSITTO

National Athletic Honor Society (4); Stage Crew (3,4); Football (2,3,4); Wrestling (2,3,4).



BERNICE RUNYAN

Library Monitor (4); Central High Players (3,4); Senior Play (4); "First Night" (4); Road Show (1, 2,3,4); Make-up (3); Student Control (2); Girls' Junior Glee Club (1,2).



PERRY RUSHLAU

Regiment (3,4); Orchestra (2,3,4); A Cappella Choir (3,4); Opera (3, 4); Road Show (3,4); Student Control (3); Boys' Senior Glee Club (2,3).



STANLEY RYCHLY

Athletic Manager (4); Cook Squad (3,4); Wrestling (3); Regiment (1,2).



MILDRED SAFERSTEEN

Junior Honor Society (3); Los Sabios (2,3); Central Colleens (1,2,3); Girls' Natural Science Club (2); G.A.A. (1).



LEONA SANDEN

Student Control (4); A Cappella Choir (4); Library Monitor (4); Girls' Junior Glee Club (1,2,3); President (3); Road Show (3); Latin Club (2); Girls' Natural Science Club (2).



OSCAR SCHNEIDERWIND

Road Show (4); Los Sabios (3); Regiment (2); Biology (2,3); Atlas Club (1,2,3).



STANLEY SCHONBERGER

NATIONAL HONOR SOCIETY

Library Monitor (4); Forensic Society (4); Discussion Club (4); Der Deutsche Verein (3,4); Junior Honor Society (1,2); Latin Club (2).



CLIFFORD SCHROEDER

Regiment (1,2,3,4), Second Lieutenant and Quartermaster (4); C.O.C. (4); Crack Squad (3); Central Committee (4); Road Show (3,4); Los Sabios (3,4); Inter-Club Council (3).



RONALD SCOTT

NATIONAL HONOR SOCIETY

Regiment (1, 2, 3, 4), Captain and Quartermaster (4); C.O.C. (4); Library Monitor (4); Orchestra (3,4); Engineers (3,4); Boys' Rifle Team (4); Road Show (2,3,4); Baseball (2); Junior Honor Society (1).



EDWARD SCOUTEN

Library Monitor (4); Speakers' Bureau (2).



FRED SEIDELL

Regiment (1,2,3,4), Second Lieutenant (4); C.O.C. (4).



MILTON SEVERINSON

Library Monitor (4); Los Sabios (2,3,4); Basketball (4); Mathematics Society (2,3); Student Control (3); Regiment (1,2).



KATHARINE SHEARER

Library Monitor (4); Monitors' Council (4); Lininger Travel Club (3,4), Treasurer (4); Central Colleens (3,4), President (4); Student Control (4); Le Cercle Francais (3, 4); French Play (4); Junior Honor Society (3); Road Show (2); State Music Contest (2).



EILEEN SHELBERG

Opera (3,4); A Cappella Choir (3, 4); Road Show (3); Make-up (3); Girls' Senior Glee Club (2); Girls' Junior Glee Club (1); Boosters' Club (1).



ROY SHEPARD

Atlas Club (3); Speakers' Bureau (1,2,3); Road Show (2); Orchestra (1,2); Regiment (1,2).



ESTHER SILVERMAN

Forensic Society (1,2,3,4), Sergeant at Arms (3,4); Central Colleens (1, 2,3,4), Sergeant at Arms (4); Le Cercle Francais (3,4); Opera (4); Orchestra (4); Mathematics Society (3,4); A Cappella Choir (4); Girls' Senior Glee Club (3); Girls' Junior Glee Club (2); Junior Honor Society (1,3); Debate (1).



SYLVIA SILVERMAN

NATIONAL HONOR SOCIETY

O-Book Staff (4); Register Staff (4); Quill and Scroll (4); Central High Players (3,4); Forensic Society (1,2,3,4), Sergeant at Arms (3, 4), Secretary (4); Senior Play (4); Student Control (4); Le Cercle Francais (3,4), Sergeant at Arms (4); French Play (3,4); Junior Honor Society (3); Loquax (4); Latin Club (2); Central Colleens (1).



PAUL SILVIO

Library Monitor (4); Athletic Manager (4); Wrestling (1,2,3); Regiment (1,2).





CARMELA SIRACUSANO



MILTON SKLENICKA



SUMNER SLATER

Regiment (1,2,3,4), First Lieutenant (4); C.O.C. (4); Hi-Y (1, 2, 3, 4); Road Show (4); Senior Play (4); Central Committee, Treasurer (4); Golf (2,3); Basketball (1,2).



JOHN SNAPP

NATIONAL HONOR SOCIETY

Loquax, Associate Editor (4); Student Control (2, 3, 4); Discussion Club (3,4), President (4); Latin Club (2,3,4); Register Staff, Circulation Manager (3); Junior Honor Society (1,2,3); League of Nations Contest (3); Art Contest (2, 3); Latin Award (3); Youth Conference (3); Regiment (1,2); Atlas Club (2).



HAROLD SOMMER

Discussion Club (4); Tennis (3,4); Der Deutsche Verein (2); Atlas Club (1,2); Golf (2).



MARGARET SMITH



MAXINE SMITH

Make-up (3); Swimming (3); Junior Honor Society (1).



VIRGINIA SMITH

O - Book Staff (4); Register Staff (4); Monitors' Council (4); Library Monitor (4); Girls' Natural Science Club (2); Latin Club (2); Boosters' Club (2); Swimming (1).



VIRGINIA SPALDING

A Cappella Choir (3,4); Opera (3); Road Show (3); Girls' Senior Glee Club (3); Girls' Junior Glee Club (2); Hockey (2); Swimming (2); Project Committee (1,2); Central Colleens (1,2).



MARY SPRAGUE

NATIONAL HONOR SOCIETY

Register Staff (4); Quill and Scroll (4); Mathematics Society (4); Baseball (1,2,3,4); Basketball (1,2,3,4); Hockey (1,2,3,4); Volleyball (1,2,3, 4); Tennis (3,4); Library Monitor (4); G. A. A. (1, 2, 3, 4), President (4); Gym Club (2,3); Junior Honor Society (1,3).



ALBERT STEIN

Register Staff (4); Quill and Scroll (4); Discussion Club (4); Debate Team (4); Debate (1,2,3,4); Forensic Society (1,2,3,4); Declamatory (3,4); Regiment (1,2).



EDITH STEIN

Library Monitor (4); Girls' Natural Science Club (3); Central Colleens (1,2); Gym Club (1).



HAROLD STERN

Regiment (1,2,3,4), Second Lieutenant (4); C.O.C. (4); Road Show (3).



WILLIAM STEVENS

Regiment (1,2,3,4), Second Lieutenant (4); C.O.C. (4); Central High Players (3,4); Boosters' Club (3); Speakers' Bureau (1).



DOROTHY SUMMERS



HENRY SWARTZ

Library Monitor (4); Regiment (1,2,3); Speakers' Bureau (3); Boosters' Club (2,3); Tennis Tournament (4); Basketball (2,3).



JOSEPH SWINARSKI

NATIONAL HONOR SOCIETY

Register Staff, Sports Editor (4); Football (1,2,3,4); Baseball (2,3); Basketball (2); Wrestling (4); Regiment (1,2).



MYRON TARNOFF

Library Monitor (4); Gentlemen's French Club (3,4); Speakers' Bureau (2); Junior Honor Society (2,3); Regiment (1,2).



DONALD TAYLOR

Los Sabios (4); A Cappella Choir (2,3,4); Opera (2,3); State Music Contest (3); Atlas Club (2); Boys' Senior Glee Club (2); Boys' Junior Glee Club (1); Regiment (1,2).



MARY ETHEL TEASDALE

Opera (4); A Cappella Choir (4); Girls' Senior Glee Club (2,3).





SYLVIA TENENBAUM

Library Monitor (4); A Cappella Choir (4); State Music Contest (3); National Music Supervisors' Convention (3); Student Control (3); Swimming (3); Opera (2); Girls' Senior Glee Club (1,2).



AMELIA THOMAS

Home Economics Club (4); G.A.A. (3).



PURNELL THOMAS

Regiment (1,2,3,4), Second Lieutenant (4); C.O.C. (4); Boys' Senior Glee Club (3,4); Boys' Rifle Team (2, 3, 4), Captain (4); Boys' Junior Glee Club (2).



WILLIAM THOMAS

Boys' O-Club (2,3,4); Football (1,2).



MILTON THOMPSON

A Cappella Choir (3,4); Opera (1, 2,3,4); State Music Contest (1,3); Track (1, 2, 3); Boys' Senior Glee Club (1,2); Boys' Junior Glee Club (1); Football (1); Costumes (1).



SARA TRETIK

Library Monitor (4); Central Colleens (2,3,4); Mathematics Society (3); Student Control (3); Junior Honor Society (3); Boosters' Club (2,3).



GEORGE TROBOUGH

NATIONAL HONOR SOCIETY

Regiment (1,2,3,4), Captain (4); C. O.C. (4); Monitor (4); Hi-Y (4); Engineers (4); Road Show (3,4); Mathematics Society (2,3,4), Sergeant at Arms (4); Football (1, 2, 3); Student Control (3); Latin Club (2); Baseball (1); Junior Honor Society (1).



DOROTHY TRUSSEL

Los Sabios (4); A Cappella Choir (3,4); Girls' Senior Glee Club (2); Girls' Junior Glee Club (1).



MARIE TULLY



SAM TURKEL

Regiment (1,2,3,4), Sergeant (4); Library Monitor (4); Register Staff, Circulation Manager (4); A Cappella Choir (3,4); State Music Contest (3); Crack Platoon (2,3); Boys' Senior Glee Club (2); Athletic Manager (1); Boys' Junior Glee Club (1).



VIOLA VASAK

Library Monitor (4); Debate (2,3).



DOROTHEA WAECHTER

O-Book Staff (4); Library Monitor (4); Central Committee (2,3,4); Le Cercle Francais (3,4); Senior Play (4); Lininger Travel Club (2,3); French Play (3); Junior Honor Society (3).



WILLIAM WAGNER

Gentlemen's French Club (4); Monitors' Council (4); Library Monitor (4); French Play (4); Boosters' Club (3); Biology Round Table, Secretary-Treasurer (3).



PHYLLIS WAGNER

Library Monitor (4); Student Control (4); Basketball (1,2,3,4); Volleyball (1,2,3); Swimming (3); Hockey (2).



DONALD WEBER

Library Monitor (4); Central Committee (3,4); Road Show (1,2); Costumes (3); Boys' Junior Glee Club (2).

ROSE WEINER

Student Control (3,4); Library Monitor (4); Boosters' Club (2); Central Colleens (1); Project Committee (1).



ESTHER WEINSTEIN

Library Monitor (4); Central Colleens (3,4); Girls' Junior Glee Club (1).



LUCILLE WELSH

Register Staff (4); Library Monitor (4); Central Colleens (1, 2, 3, 4); Make-up (4); French Play (4); Girls' Senior Glee Club (2, 3, 4); Quill and Scroll (4); Le Cercle Francais (4); Student Control (4); Senior Play (4); Junior Honor Society (3); Mathematics Society (3); Girls' Natural Science Club (2); Boosters' Club (2); Girls' Junior Glee Club (1).



DOROTHY WHITE



DOROTHY WHINNERY

Stagecraft (4); Home Economics Club (4); Boosters' Club (2,3).





EDYTHER WHITEBOOK

O-Book Staff (4); Register Staff, News Editor (4); Quill and Scroll (4); Mathematics Society (4); Senior Play (4); Los Sabios (2,3,4); Central Colleens (2,3); Reviewers' Staff (3); Junior Honor Society (2).



FLORENCE WHITEBOOK

Library Monitor (4); Student Control (4); Road Show (3,4); Senior Play (4); Orchestra (3,4); A Cappella Choir (3,4); Central Colleens (3); State Music Contest (3).



HARRIETT WHITTLE

Register Staff (4); Student Control (4); Library Monitor (4).



DONALD WIEMER

Regiment (1, 2, 3, 4), Captain and Commissary (4); C.O.C. (4), Secretary (4); Los Sabios (2,3,4); Road Show (4); Boys' O-Club (3,4); Golf (1,2,3,4); Basketball (1,2,3,4); Hi-Y (1,2,3,4), President (4); Atlas Club (3); Speakers' Bureau (1,2); Crack Platoon (2); French Play (1).



JOE WILLIAMSON



KATHRYN WILSON



MARION WILSON

Central High Players (3,4); "First Night" (4); Central Committee (2, 3,4); Road Show (4); Inter-Club Council (3); Central Colleens (3); Costumes (3).



WESTON WILSON

NATIONAL HONOR SOCIETY
Baseball (3,4).



HELEN WOODFORD

Girls' Senior Glee Club (3); Girls' Junior Glee Club (1,2); G.A.A. (3); Central Colleens (1,2,3).



MABEL E. WRIGHT

O-Book Staff, Associate Editor (4); Library Monitor (4); Monitors' Council (4); Lininger Travel Club (2, 3, 4), Secretary (3), President (4); Senior Play (4); Central Committee (3,4); Le Cercle Francais (3,4), Treasurer (4); Mathematics Society (2, 3, 4), Secretary (3, 4); French Play (3,4); Latin Club (2); Speakers' Bureau (2), Secretary (2); Central Colleens (2).



ODESSA YANT

Library Monitor (4); Road Show (3,4); Central Committee (3,4); Senior Play (4); Lininger Travel Club (3); Sergeant at Arms (3); Girls' Junior Glee Club (3); French Play (3); Girls' Natural Science Club (2,3).



CHARLES A. YEAGER

Der Deutsche Verein (3,4); Mathematics Society (3,4); Library Monitor (4); Track (4); Boys' Senior Glee Club (3); Boys' Junior Glee Club (3); Biology Round Table (1,2,3).



MARGARET A. YOUNG

Library Monitor (4); French Play (4); Lininger Travel Club (4); Road Show (4); Senior Play (4); Le Cercle Francais (1,2,3,4); Central Committee (2,3,4); Sergeant at Arms (3); Vice President (3); Loquax (3); Student Control (2,3); Junior Honor Society (2).



PATSY YOUNG

Le Cercle Francais (4); Central Colleens (3); Central High Players (3); Golf (1,2,3); G.A.A. (1).



MADELEINE MacNEILL

A Cappella Choir (4); Library Monitor (4); Los Sabios (2,3,4); Girls' Senior Glee Club (3); Girls' Junior Glee Club (2,3).



BERNICE YOUSEM

Register Staff (3,4); Central Colleens (2,3,4); Quill and Scroll (4); Le Cercle Francais (3,4); Library Monitor (4); Greenwich Villagers (4).



MEREDITH ZIMMERMAN

NATIONAL HONOR SOCIETY

O-Book Staff (4); Register Staff, Editor (4); Quill and Scroll (4); El Herald, Editor (4); Los Sabios (2,3,4), Vice President (4); Tennis Tournament (1,3,4); Mathematics Society (2,3,4); Student Control (3); Boys' Senior Glee Club (3); Boys' Junior Glee Club (1,2); Reviewers' Staff (3); Junior Honor Society (2,3).



PAUL ZIMMERMAN



GOLDIE ZUSMAN

Library Monitor (4); Girls' Senior Glee Club (2); Girls' Junior Glee Club (1); Central Colleens (1).



ROGER AULABAUGH

Central High Players (2,3,4); Football (3,4); Los Sabios (2,3); Drill (1,2,3); Basketball (1,2).





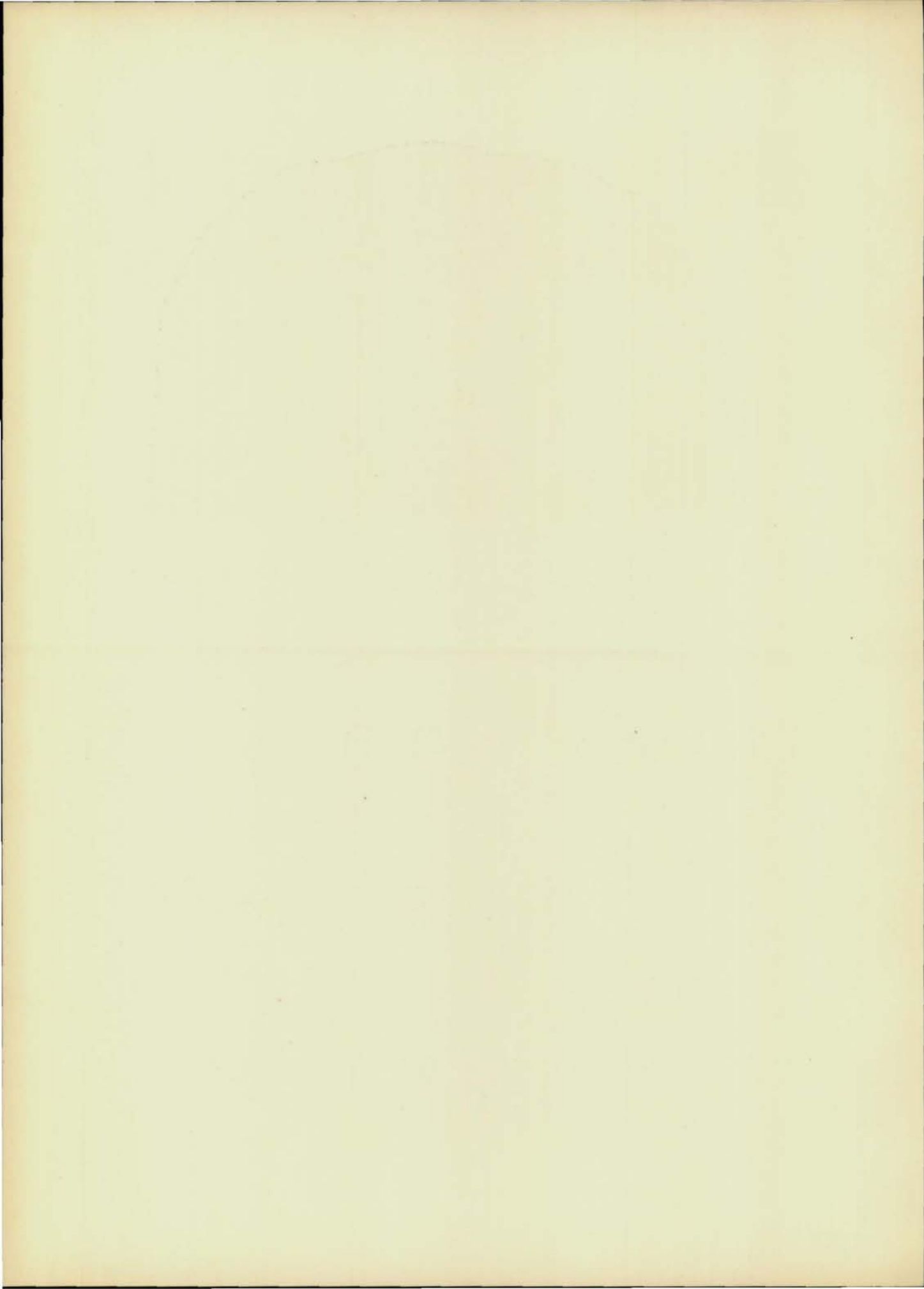
SENIOR CLASS (Continued)

BEATRICE ADAMS	CLARENCE MACH
JOHN AIRY	HARRIETT MASTERS
JULIA ANDERSON	CHARLOTTE MARSHALL
FRANKLIN ANDREWS	RICHARD MELCHER
ROBERT BARTON	HENRIETTA MEYER
RUDOLPH BERANEK	JOHN MONEY
PAUL BOGDANOFF	MARY PALLADINA
ROBERT BUTTS	ANTHONY PANEBIANCO
ELBERT CAJACOB	ELLSWORTH PERRY
MAURICE CAMPBELL	KENNETH PLOSS
BARBARA E. CARTER	PHILIP PRICE
HAROLD COOK	MAXINE PRITCHARD
MARY ELLEN COPELAND	WILLIAM REIMUND
JACK CUMMINS	LEE ROBERTS
EARL ENGLISH	ROBERT ROSS
JOHN ENSLOW	DESMOND SESSINGHAUS
JOHN GIANGROSSO	CLAUDE SHOEMAKER
CATHERINE GILMORE	MARY SIMMONS
CHARLES GOLDBERG	MARGUERITE STIDGER
HAROLD HARTE	WILLIAM TALBITZER
FLORENCE INDA	HOWARD WATSON
WARREN JACKSON	ERNST WELLAUER
ANNE MARIE KALCIK	ELIZABETH WENTWORTH
RUSSELL KRECULOV	WILLIAM WIIG
MALCOLM LINDLEAF	WOODROW WILSON
MAXINE LISCHER	LE ROY WRIGHT
WILLIAM LORING	GERTRUDE
	WUSTERHAUSEN

SENIOR CLASS SPONSORS

DR. H. A. SENTER
MARY A. PARKER
F. Y. KNAPPLE
AMANDA E. ANDERSON
MARGARET MUELLER
JESSIE M. TOWNE







NATIONAL HONOR SOCIETY

Zimmerman, Dansky, Hart, Bordy, Scott, Braig, Harrison, Bickel, Nielsen, Swinarski, Buell, Trobough, Schonberger, Snapp, Hackler, Wilson, Jones, Holyoke, McMartin, Sprague, Lischer, Harrington, Hansen, Ross, Harris, Erickson, Perkins, Hornstein, Silverman, Maysrick, Hall, Backstrom, Auracher, Biurvall, Gould, Kurtz, Lee, Perley.

NATIONAL HONOR SOCIETY

THIRTY-EIGHT Central seniors were elected to the National Honor society in 1933. These twenty-four boys and fourteen girls have received the highest honor that Central High school can confer upon any student. From the upper quartile of the senior class in scholastic ranking, these students were selected on the qualities of service, character, leadership. A faculty committee composed of the heads of the departments and sponsors of activities makes the selections under the chairmanship of Principal J. G. Masters.

Membership in the National Honor society represents to the high school student what Phi Beta Kappa does to the college student. And Central High school takes a special pride in this organization since it was founded in 1921 at the suggestion of Principal Masters who felt that students excelling in high school work and activities should be given some sort of recognition. Now a nation-wide honorary fraternity, it has over eighteen hundred chapters throughout the United States. Including the thirty-eight students elected this year, 526 seniors have been admitted to membership in the Central High chapter of the society in the thirteen years of its existence.

Bishop E. V. Shayler of the Episcopalian Diocese of Nebraska announced the names of Central's thirteenth honor group at an assembly April 18 in the auditorium. In his speech to the honor students, Bishop Shayler cautioned them to make a life instead of a living. He said, "Your community has given you an opportunity; now go out and offer your service to it."

To these students, Central High school is indebted. Although well represented in distinguished faculty and alumni, the school is known primarily by the caliber of its students from year to year. The outstanding record of these pupils is the basis for Central's continued high ranking.





JUNIOR HONOR SOCIETY — GAMMA CHAPTER

Lerner, Rosenbaum, Macalister, Hutter, Civin, Holland, Adams, Bourke, Rosewater, Hurtz, Powell, Williams, Bushman, Pederson, Stieckler, Whitmore, Stiefler, Potter, Bunce, Bonekemper, Rees, Sandham, Churchill, Senter.
 MacDonald, Bishop, Eller, Nelson, Jensen, Marconnit, Chadwell, Gordon, Vance, Byrd, Grobee, Berkowitz, Perkins, Resnick, Moeller, Schryver, Christopher, Buettenback, Buckland, Rosenfeld, Barish, Nilsson, Holmstrom, Slutsky, Kulakofsky.



JUNIOR HONOR SOCIETY — DELTA CHAPTER

Hornstein, Hildebrand, Kaplan, Tatelman, Gogela, Rees, Bolker, Cunningham, Nimmo, McGee, Cohen, Harriss, Smith, Hindman, Allen, Reynolds, Dodson, Rubendall, Dodds, Leffer, Zelinsky, Carr, Petty, Beeson, Rosenbaum, Hart, Kelly, Camel, Goetz, Hossack, Leon, Wolf, Baldwin, Tunison, Kennedy, Wood, Taylor, Sherrig, Jones, Lacinia, Olson, Vogel.



JUNIOR HONOR SOCIETY — EPSILON CHAPTER

Severinsen, Field, Katz, Burton, Caywood, Morris, Horan, Ball, Clarke, Emerson, Klain.
 Resnick, Schrempf, M. Miller, Dansky, J. Miller, Moon, Busch, Votava, Nourse, Marshall, Hennings.
 Dayton, Dolphin, Allen, Wiese, Young, Kieser, L. Anderson, Eyre, J. Anderson, Ramsey, Handley, Phillips,
 Baum, Frank.
 Lipp, Friedman, Kvetensky, Schwartz, Sheehan, Uren, Pepper, Guenther, Silverman, Powell, Payne,
 Blumkin, Bordy.
 Gershater, Finer, Osoff, Armstrong, Ackerman, Kilbourne, Cramer, Rivett, Strauss, Tarnoff, Pitts, Marsh,
 Wolfe.

JUNIOR HONOR SOCIETY

THE GOAL to which all underclassmen aspire! The purposes of the Junior Honor society are to recognize individuality and high achievement in both studies and school activities, to encourage leadership, to develop character. The institution was founded through the efforts of Principal J. G. Masters in 1923 and is sponsored by a council of five faculty members.

Membership in Junior Honor society is based on scholarship and character; in addition, sophomores and juniors must also display qualities of leadership, service, and loyalty to the school. Those elected must have two full credit A's and no grade below B, though the individual carrying five subjects is permitted one C.

Three chapters compose the organization: Epsilon for freshmen, Delta for sophomores, Gamma for juniors. This year fifteen per cent of each class was elected to membership by the general council of sponsors and three members at large, under the chairmanship of Miss Louise Stegner, English teacher. Graduates who have belonged to Junior Honor society are considered honorary members. At the end of one year active membership ceases.

Announcement of the elections was made in the Central High auditorium on April 25 with R. B. Bedell, mathematics teacher, in charge. J. G. Schmidt, physics teacher, announced the Gamma chapter; Miss Martina Swenson, English teacher, the Delta chapter, and Miss Elizabeth Kiewit, history teacher, the Epsilon chapter.

The officers of the society are the president from the Gamma chapter; the vice president, elected from the Epsilon chapter, and the secretary-treasurer, elected from the Delta chapter.





FIRST SEMESTER REGISTER STAFF AND O-BOOK STAFF

Lerner, Chait, Ward, Frohardt, Hackler, Snapp, Harrison, Campbell,
Price, Kemper, Greer, Braun, Jones, M. Harris, Hansen, W. Harris,
Wright, Sprague, Biurvall, Zimmerman, Dansky, Friedman, Bordy, Hart, Smith,
Kirkpatrick, Silverman, Fore, Whitebook, Waechter, Gould, Ross, Pincero, Corkin.

PUBLICATIONS

THE CENTRAL High Register, ever since it was founded in 1874, has won the highest possible honors in recognition of its merit. All-American honor rating, the highest award conferred by the National Scholastic Press association, and a similar award conferred by the Columbia Scholastic Press association, have been received for the past five years. This year, for the first time, the Register was entered in the National Quill and Scroll newspaper contest.

Membership in Quill and Scroll, international honor society for high school journalists, was awarded this year to twenty-two students in the annual spring election. To become a member of this organization, a student must fulfill the following requirements: he must do outstanding work in journalism, rank in the upper third of his class, be recommended by the journalism instructor, and have his recommendation approved by Edward Nell, executive secretary. Since it was founded in 1926 by a group of teachers at the University of Iowa, the society has grown to include six hundred active chapters with more than twelve thousand members. The purpose of the organization is to raise the standards of journalism through the development of a high code of ethics in students. Members of the society receive the official publication, Quill and Scroll, published quarterly.

El Heraldo, newspaper written entirely in Spanish and sponsored by the Spanish department, was published for the first time in April. The Latin department issued Loquax, the fourth annual Latin paper, in May. The paper also contained one section devoted to French. The editors of both papers are also members of the Register staff. The O-Book, as usual, was published by a staff composed of members of the Register staff, together with editors appointed from the senior class.

QUILL AND SCROLL — 1932-33

SHIRLEY BARISH, JEANNE BIURVALL, DARRELL CHURCHILL, MORRIS DANSKY, FLORENCE FITZ-DOWD, LLOYD FRIEDMAN, BETTY GOULD, WINDSOR G. HACKLER, FRANCES C. HANSEN, MARGARET HARRIS, WINIFRED HARRIS, WILLIAM B. HART, JOHN JANECEK, RALPH W. JONES, MORRIS LERNER, GORDON MACALISTER, MARY FRANCES MARCONNIT, DOROTHY MAYSTRICK, BETTY ROSS, SYLVIA SILVERMAN, MARY SPRAGUE, ALBERT STEIN, LUCILE WELSH, EDYTHE WHITEBOOK, BERNICE YOUSEM, MEREDITH ZIMMERMAN.



SECOND SEMESTER REGISTER STAFF

Sprague, Ward, Stein, Marconnit, Smith, Fitz-Dowd, Whittle, Lerner, Berkowitz, Greer, Turkel, Rowley, Edgerly, Carey, Macalister, W. Harris, Hulst, Maystrick, Braude, Bernstein, Kaplan, M. Harris, Welsh, Gould, Clark, Anderson, Ross, Whitebook, Hart, Churchill, Hackler, Zimmerman, Dansky, Price, Hansen, Biurvall.

REGISTER STAFF

FIRST SEMESTER

PHILIP PRICE
FRANCES C. HANSEN
LAWRENCE BORDY
MORRIS DANSKY
MEREDITH ZIMMERMAN
EDYTHE WHITEBOOK
WINIFRED HARRIS
JOSEPH SWINARSKI
JOHN JANECEK
LLOYD FRIEDMAN
MARY SPRAGUE
WILLIAM B. HART
BETTY GOULD
SIDNEY CHAIT
JOHN SNAPP

Editor in Chief.....
Associate Editors.....
News Editor.....
Feature Writers.....
Sports Editors.....
Business Manager.....
Advertising Manager.....
Circulation Managers.....

SECOND SEMESTER

WINDSOR G. HACKLER
PHILIP PRICE
FRANCES C. HANSEN
MORRIS DANSKY
MEREDITH ZIMMERMAN
EDYTHE WHITEBOOK
{WINIFRED HARRIS
{MORRIS LERNER
JOHN JANECEK
DARRELL CHURCHILL
MARY SPRAGUE
WILLIAM B. HART
JEANNE BIURVALL
{SAM TURKEL
{WALTER ROWLEY

O-BOOK STAFF

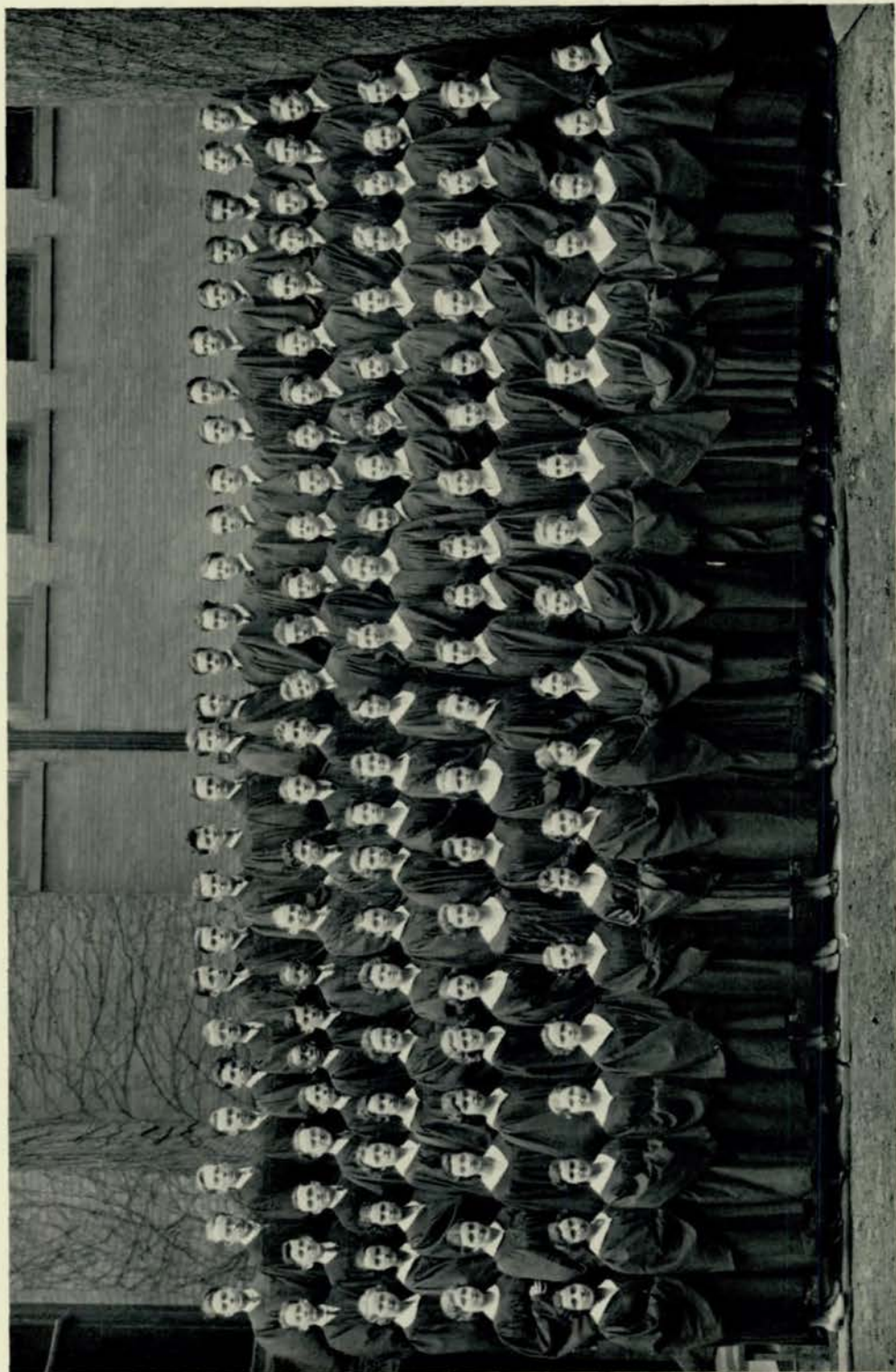
Editor in Chief.....RALPH W. JONES
Business Manager.....WILLIAM B. HART
Circulation Manager.....ROBERT BRAUN
Art Editor.....HOMER FROHARDT
Assistant Editors.....
{DAN HARRISON
{WINDSOR G. HACKLER
{JOHN JANECEK
{ELIZABETH PINDEORO
{BETTY ROSS
{MABEL WRIGHT

FACULTY ADVISERS

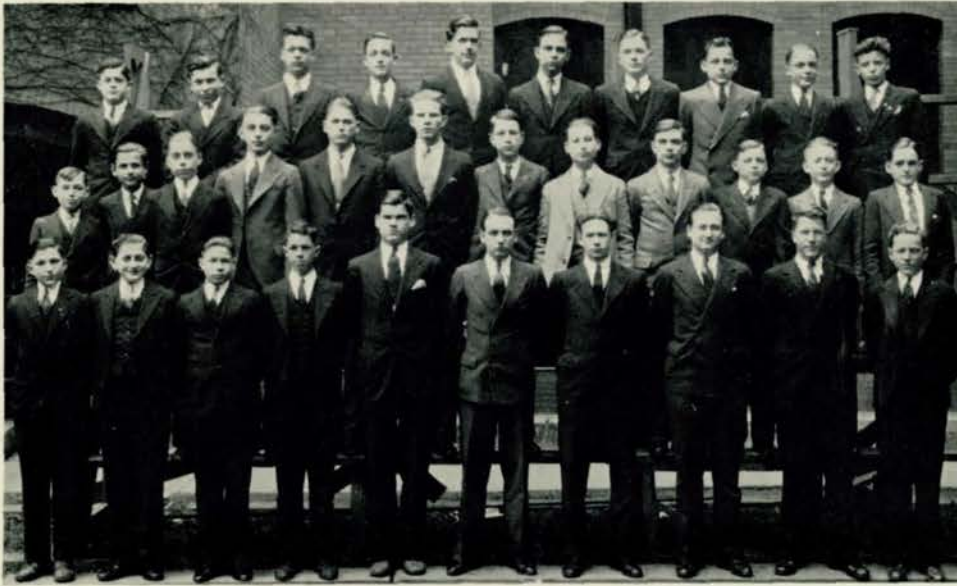
ANNE LANE SAVIDGE
EDITORIAL

MARY ANGOOD
ART

ANDREW NELSEN
BUSINESS



A CAPPELLA CHOIR



BOYS' SENIOR GLEE CLUB

Heald, Wolk, Rosenbaum, Allis, Rich, Kinman, Field, Rohde, G. Miller, Dutiel,
 Hennings, Thomsen, Osterholm, D. Miller, Osborne, Brownlee, Erickson, Harris, Duff, Birk, Cleveland,
 Phillips,
 Wezelman, Dansky, Keeley, Crosby, Wilson, Phelps, Dergan, Reynolds, Knox, Tucher.

A CAPPELLA CHOIR

ONE OF THE major activities of Central is the a cappella choir. Members are chosen from the Senior and Junior glee clubs according to their merit. The choir has attained a reputation for being one of the best in the United States, and each year many visitors come to Central High especially to hear it.

A number of concerts are given each season; this year the choir sang for the Nebraska School Men's club and the Omaha P. T. A., presented Sunday concerts at the First Presbyterian church and the First Christian church, and sang at a festival at Central on May 26. They also broadcast two concerts over KOIL. Next year the choir plans to send several members to Chicago for the national a cappella choir to be assembled in April.

Five soloists of the choir attained distinction this year in state and district contests: Margaret Fry, Mary Jane France, Kermit Hansen, Tom Jones, and Conrad Buell. Mrs. Carol Marhoff Pitts, director of this group, is assisted by Mrs. Elsie Howe Swanson.

CHOIR MEMBERS (See opposite page)

Lewis, Harris, Bock, Taylor, P. Rushlau, Thorsen, Wilson, Frohardt, Robinson, Lustgarten, Wendell, Laverty, Morton, Barnett, McCune, Corson, Buell, Bernstein, Traub, Money, Hesler, Helgren, Crawford, Greer, Alexander, K. Hansen.

Wolfe, Dergan, I. Hornstein, J. Hornstein, Cohen, T. Jones, Gramly, Perkins, Rachman, Nathan, Polyzois, Kaplan, Johnson, Shoemaker, Layton, Green, Bowman, B. Fry, Butts, Edwards, Bentley, Brodkey, Turkel, D. Hansen, Masters.

Shellberg, Rhodes, M. Myers, Deeter, Roberts, Goldsmith, Stone, Eller, Campbell, Mead, Knapp, Bishop, Yates, Gardner, Jackson, Eldridge, Ernst, Benson, Dimke, Sherrig, Sanden, Esveld, Trussell.

Zook, Fore, Resnick, Costanzo, Mossman, Kipling, Beeson, Bliss, Backlund, Hunting, Fales, Gerye, Morse, Allis, Silverman, Dickirson, Anderson, Baldwin, Pohl, E. Meyers.

Koory, Goetz, Holman, McMartin, Rohacek, Tenenbaum, M. Fry, France, M. Jones, Whitebook, Rohlf, Noxon, Smith, Macumber, Binkley, Farber, Ashwood, Bickel, Blumkin.





GIRLS' SENIOR GLEE CLUB

Slabaugh, Polonsky, Eck, Parks, Flynn, Rahel, Moran, Otis, Sothman, Hart, Hubbard, Quattrochi, Pakes, Gilbert, Thomas, Cochran, Campbell Speck, Allen, Clucker, Larsen, DeWitt, Frohardt, Borman, Hennings, Miloni, Vlack, Pollard, Pratt, Fletcher, Emmert, Clark, Henningson, Kilbourn, J. Anderson, Ford, Hirs, Lacina, Weiser, Bredin, Kohn, Newell, Bedell, Horejs, Thomsen, McCulley, Dansky, Wiegert, Cary, Ellison, Koory, Friedman, Pitts, Patton.

BOYS' AND GIRLS' SENIOR GLEE CLUBS

THE SENIOR glee clubs make up the intermediate group of the music department and are picked from the Junior glee clubs to prepare for membership in the a cappella choir; promotion is based on individual ability. There are five Junior or beginning glee clubs, membership in which is open to any student in Central. All music is elective and the activities of the music department may be enjoyed by any student who enrolls. Voice classes are held daily in which vocal training is given as preparation for quartet work, solo work, participation in the annual opera and radio performances. A thorough theoretical foundation may also be secured through the study of Harmony, History of Music, and Music Appreciation. Students are able to major in music since all of these are full credit subjects.

The Junior glee clubs are trained by Mrs. Elsie Howe Swanson, who gives them a good foundation for the difficult work which is done by the a cappella under the direction of Mrs. Carol M. Pitts. Pupils in the Senior glee clubs are eligible for opera and other performances; tryouts determine individual placements.

This year the glee clubs presented the comic opera "The Two Vagabonds." Leading parts were taken by Margaret Fry, Kermit Hansen, Charles Rachman, Amy Ann Rohacek, Bob Butts, Mariana Gardner, Mary Jane France, Conrad Buell, and Bryce Bednar.

Besides the opera, several radio programs were broadcast over KOIL, many recitals were given by members of the voice classes, a concert was given at the First Presbyterian church, and a May festival was presented at Central in the auditorium. Central High school also entered a number of students in the state music contest at Kearney, Nebraska. Rating is given as superior, excellent, good, and average. Central won three superior rankings, three excellent, and two good.



MONITORS' COUNCIL

Shearer, V. Smith, W. Harris, Auracher, Baker, Bordy.
Wagner, Monsky, Bittner, Fry, Rohacek, Wright.

MONITORS' COUNCIL AND STUDENT CONTROL

TWO OF THE most prominent activities connected with the library are Student Control and Monitors' Council, both forms of student government whose membership is based on character and ability.

The Monitors' Council is composed of seven library monitors, one for each hour, elected every semester by the monitors themselves. The council elects a chairman and holds biweekly meetings; this year Dorothy Auracher is chairman. The purpose of the council is to act as a court to warn students who are guilty of library "errors," and to penalize students having four or more "errors." The Monitors' Council also considers the conduct of monitors themselves, makes suggestions and constructive criticism of library order and system.

The library has been helped by members of Student Control for about five years. This year thirty-two students are enrolled in this voluntary service. Every hour of the day and before and after school students help catalog and mend books, change bulletins, register students, type lists of students registered from study halls, file cards, mount pictures, type notices and duns for overdue books, stamp history students' slips, and help with other innumerable odd jobs. Not only is this work of enormous assistance to the library but it also is good practice in form, accuracy, speed, and general clerical work.

It is to Miss Zora Shields, head librarian, that we owe the growth of the library collection from 100 to 23,000 books and periodicals and its progress from a small rarely-used library to one of the best and most efficient high school libraries in the country.





CADET OFFICERS' CLUB

CADET OFFICERS' CLUB



**LIEUTENANT COLONEL
RICHARD E. KELLEY**

RICHARD E. KELLEY
LIEUTENANT COLONEL

ROBERT E. LLOYD
MAJOR FIRST BATTALION

JOHN B. HOLYOKE
MAJOR SECOND BATTALION

GEORGE F. BRAIG
CAPTAIN AND ADJUTANT

WILLIAM C. HAMILTON
CAPTAIN AND ORDNANCE

CARLETON A. RANNEY
CAPTAIN COMPANY A

ROBERT A. BRAUN
CAPTAIN COMPANY B

JOHN BELL BRAIN, Jr.
CAPTAIN COMPANY C

ROBERT J. BITTNER
CAPTAIN COMPANY D

GARRETT FONDA
CAPTAIN COMPANY E

DONALD A. HUGHES
CAPTAIN COMPANY F

GEORGE EUGENE TROBOUGH
CAPTAIN BAND

RONALD FAIRBANKS SCOTT
CAPTAIN AND QUARTERMASTER

DONALD N. WIEMER
CAPTAIN AND COMMISSARY

ROSS J. ALEXANDER
CAPTAIN AND PERSONNEL ADJUTANT

WINDSOR G. HACKLER
FIRST LIEUTENANT AND ADJUTANT
FIRST BATTALION

ALFRED J. MARTIN
FIRST LIEUTENANT AND ADJUTANT
SECOND BATTALION

REUBEN NOEL PERLEY, Jr.
FIRST LIEUTENANT COMPANY A

FRANK P. COWDERY, Jr.
FIRST LIEUTENANT COMPANY B

DAVID PORTER POWELL
FIRST LIEUTENANT COMPANY C

JOHN L. EDDY
FIRST LIEUTENANT COMPANY D

RICHARD MELCHER
FIRST LIEUTENANT COMPANY D

E. SUMNER SLATER
FIRST LIEUTENANT COMPANY E

EDGAR A. BAIRD, Jr.
FIRST LIEUTENANT COMPANY F

THOMAS MARSHALL
FIRST LIEUTENANT BAND

JAMES H. CRADDOCK, Jr.
FIRST LIEUTENANT

FLOYD R. BAKER
SECOND LIEUTENANT AND QUARTERMASTER
FIRST BATTALION

CLIFFORD F. SCHROEDER
SECOND LIEUTENANT AND QUARTERMASTER
SECOND BATTALION

RALPH WILSON JONES, Jr.
SECOND LIEUTENANT STAFF

HENRY A. HOFF
SECOND LIEUTENANT COMPANY A

LAWRENCE ARTHUR GREEN
SECOND LIEUTENANT COMPANY A

WILLIAM STEVENS
SECOND LIEUTENANT COMPANY A

ARTHUR KIRKHAM AMOS
SECOND LIEUTENANT COMPANY B

PURNELL H. THOMAS
SECOND LIEUTENANT COMPANY B

WILL N. CORSON
SECOND LIEUTENANT COMPANY C

CHANDLER G. DERBY
SECOND LIEUTENANT COMPANY C

CYRUS W. BOWMAN
SECOND LIEUTENANT COMPANY D

CHARLES H. KING
SECOND LIEUTENANT COMPANY D

ROBERT E. ADWERS
SECOND LIEUTENANT COMPANY E

DAN HARRISON
SECOND LIEUTENANT COMPANY E

WILLIAM B. LORING
SECOND LIEUTENANT COMPANY F

FREDERICK M. SEIDELL
SECOND LIEUTENANT COMPANY F

HAROLD L. STERN
SECOND LIEUTENANT BAND

HUGH Q. MORTON, Jr.
SECOND LIEUTENANT BAND





BAND

J. Rushlau, Veneziano, Ewing, Kopecky, Morris, J. Hornstein,
 Finkel, Miller, H. Rees, Tuchman, Christensen, Senter, R. MacDuff,
 Nalty, McDonald, Jensen, Eisenstatt, Bialac, Bednar, Tatelman,
 Nathan, Aiken, P. Rushlau, Sherman, L. Anderson, Rowley, McDonough,
 Trobough, Marshall, Morton, Beem, Harris, M. Anderson, Jones, Stern, Encell.

OMAHA HIGH SCHOOL REGIMENT

CADET OFFICERS' CLUB, Band, Crack Squad, and Engineers, pictured here, are vital parts of the Central High School Cadet Regiment, and as such carry the greater part of the responsibility for the continued high ranking of the military organization.

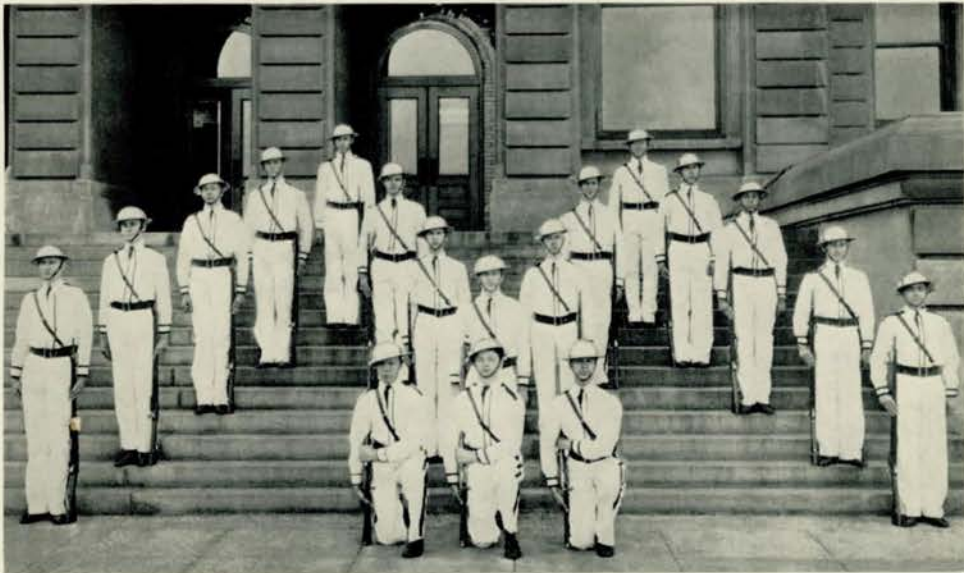
Every cadet officer is a member of the Cadet Officers' club and is entitled to participate in the grand march at the annual ball. The C.O.C. sponsors the Road Show; Major Robert E. Lloyd, president of the club, was manager of this year's splendid production.

The Band, captained this year by George Trobough, is a necessary part of regimentals, officials drills. For the second time in its history, the Band played in the Road Show this year. It is the main factor in arousing enthusiasm and pep for assemblies, athletic games, both indoors and out-of-doors.

And what Road Show could be complete without the rhythmic, precise drill of the Crack Squad? This year's squad, larger than usual with fifteen members, executed its perfectly-timed manuals with an unprecedented skill and was rewarded for its long practice by the enthusiastic applause of the audiences.

The Engineers, carefully selected by the lieutenant colonel and the commandant, are responsible in great measure for the success of the annual cadet encampment. Headed by Captain John Brain, they will leave school early to lay out the camp at Valley, Nebraska, and plan for the cadets who will arrive later.

To Lieutenant Colonel Richard E. Kelley and to Commandant F. H. Gulgard are attributed the maintenance of high standards and wholesome spirit in the 1933 Cadet Regiment. The unexpected large sale of Student Association tickets, complete sell-out of tickets for the Road Show, continuation of careful drills, snappy regimentals are striking tributes to their leadership, organization, understanding.



CRACK SQUAD

Smith, Rohrbough, Potter, Sears, Wetherell, Bonekemper, Quady, Adams, Clarke, Ogilvie, Drew, Rodwell, Stickler, Pilling, Livermore, Moriarty, Bourke, Row.



ENGINEERS

Kelley, Wright, Knapple, Quady, Ranney, Trobough, Fonda, Lloyd, Scott, Greer, Martin, Cowdery, Swanson, Payne, Bonekemper, Pilling, McClurg, Kenny, Brain, Powell, Braig, Holyoke.





NATIONAL ATHLETIC HONOR SOCIETY

Brookman, Rodwell, Birge, Stickler, Hoff, Rossitto.
Howell, Quinn, Best, Elliott, Ogilvie, Payne.

NATIONAL ATHLETIC HONOR SOCIETY

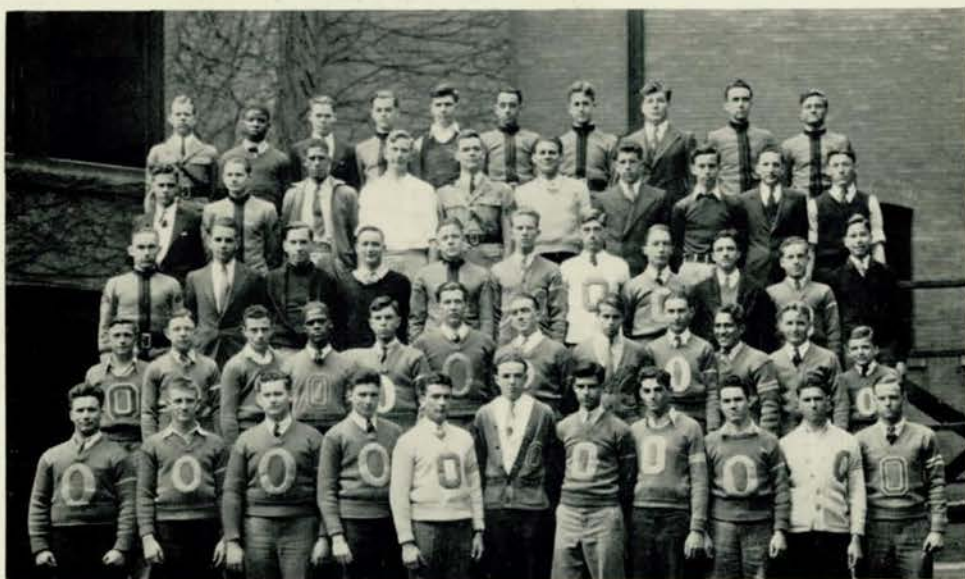
TWELVE BOYS were awarded memberships this year in the National Athletic Honor society, the highest honor that can be given to an athlete in a secondary school. Of the twelve, William Best, Irvin Birge, Henry Hoff, John Howell, Leo Quinn, and Sebastino Rossitto are seniors; Bill Brookman, John Elliott, Norman Ogilvie, George Payne, Robert Rodwell, and Harry Stickler are juniors. Only juniors and seniors are eligible. Those elected to the society this spring represent Central's four major sports. A brief review of the 1933 season for each of these sports follows:

FOOTBALL — Coach F. Y. Knapple had thirteen veterans and one of the heaviest teams of the city, but they played against hard luck all year. They won only twice, defeating Fremont and St. Joseph. The traditional game with Tech again ended in favor of the Maroons.

BASKETBALL — The Knapplemen had a fair year in the cage sport, defeating Harlan, Columbus, St. Joseph, Lincoln, Technical, and Central alumni. The feature game of the year was the Eagles' 32-31 victory over the state champions, Columbus. Altsuler's last minute goal won the game.

BASEBALL — The diamond team with six veterans was rated high in the city for the 1933 season. They secured early season victories over Papillion, Elkhorn, and Louisville, but lost their first city encounter to Tech. Coach John B. Scott took charge of the baseball team for the first time.

TRACK — Coach J. G. Schmidt's cinder trotters were due to give Tech a close fight for the city, Missouri Valley, and state titles. The team opened its season with a victory over North and South in a triangular meet. "Papa" Schmidt entered the squad in the M-I-N-K relays at Peru and in the Tee Jay relays in Council Bluffs besides the city, state, and various dual and triangular meets.



O - CLUB

Wiemer, Rogers, Myers, Garver, B. Buell, Stickler, Ogilvie, Condon, Brookman, Payne, Barker, Taylor, Thomas, Quinn, Amos, Rosenbaum, Clark, Peterson, Rimmerman, Mazzeri, Rodwell, Baudo, Hruba, Dunn, Seemann, Brownlee, N. Perley, Hoff, S. Campagna, Troia, Friedman, Tagg, Wall, Schwartz, Pemberton, R. Perley, Hesler, C. Buell, Lima, Horacek, Rossitto, Hamilton, Vuylstek, Kasal, Howell, Blackburn, Hughes, Douglas, Davidson, Best, Korney, Whalen, Altsuler, Birge.

O - CLUB

THIS YEAR, as in previous years, the athletic lettermen from all sports at Central banded together under the direction of F. Y. Knapple and formed the O - Club.

During the year the club sponsored a banquet in the school cafeteria. This event was so well supported that possibly it will become an annual affair. Many members of the O-Club are representatives of Central's four minor sports. A summary of this year's season for each of these sports follows:

SWIMMING—Coach John B. Scott and Captain Paul Lima led the Purple ducks to second place in both the city and state meets. Many individual performers showed up well and a few garnered city and state records. Lincoln acquired the Nebraska state title when the meet was turned into a dual affair because of the suspension of Technical. The Lynx team had previously beaten Central twice, so the outcome was not unexpected.

WRESTLING—This year's wrestling team made only an average showing, although several fine individual grapplers were on the squad. Coach L. N. Bexten's lads finished fifth in the inter-city race, ahead of Creighton. Shelley Condon gained a tie for the state heavyweight championship with Norman Sorenson of South at the state meet.

GOLF—The prospects for a victorious golf team were fine with Mr. Knapple coaching for the first time. An elimination tournament was held to aid the coach in choosing the squad. Bill Hamilton was crowned school champ when he downed Charles Rachman, 11 up and 10 to go. Bill Christie was the medalist of the tourney with 162 for 18 holes.

TENNIS—With Joe Barker and Al Rimmerman as co-captains, the tennis squad was given a fair chance of taking the inter-city flag. Coach Gilbert Barnhill conducted a series of elimination meets to determine team members.





GIRLS' SPORTS

Yaffee, L. Wolfson, Keeley, Kavan, Sprague, Pakes, Hassert, Chamberlin, Johnson, Ferguson, Harms, Thorson, L. Lawson, Kieser, Watkins, R. Kuehl, Bowen, Bates, E. Kuehl, Caniglia, Reynolds, R. Wolfson, Gee, Dorsey, Call, Bernstein, Roddy, Broad, Bexten, Duffield, Noe, Silvio, Kennedy, Nolan, Meier, Andersen, Jackson, Sexson, Morton, Gerke.

GIRLS' SPORTS

SPORTS CLASSES were organized in 1931 by Mrs. Glee G. Meier, girls' gym instructor, for girls who prefer sports to regular gym work. Technique and rules of all the seasonal sports are taken up during the regular class period.

Riflery was added to the list of sports this year with instruction once a week in the school rifle range under the direction of Mrs. Meier and Sergeant S. B. Moore. Central is affiliated with the National Junior Rifle association, and through this organization Central girls are given the opportunity to work for ranks in rifle marksmanship. Eighteen girls were awarded certificates on March 29 for attaining ranks in riflery for both semesters.

Archery was introduced in sports classes this spring with new equipment. After learning the fundamentals in the gym, the girls shot at fifty yards out-of-doors. The two major after-school sports for girls are volleyball and hockey. The most popular this year was volleyball with sixty adherents. Practice was held once a week in the gym from September to November. Victorious in the intramural tourney were the Junior-Seniors, captained by Coleen Masters, while Nancy Chadwell's sophomores placed second. At the close of eight volleyball practices, the winning team and substitutes represented Central at an all-city volleyball play day at South High school, December 2.

Once of the most vigorous after-school sports offered to girls is hockey. Miss Charlotte McDougal, gym instructor in 1922, founded the sport at Central eleven years ago. Practice is held once a week from October to December in the cage. Two teams were chosen to compete in a tournament during the season. Dorothy Collins headed the winning eleven which won six out of eight games.



GIRLS' SWIMMING

Allis, Ferryman, Borman, Bradshaw, Peake, Dimke, Kilbourn, E. Allen, Larson, Soref, Silverman, Swoboda, Circo, Petersen.
 Mrs. Meier, Turner, Frohardt, Fahnestock, J. Eayrs, Kopecky, Lacina, Hughes, Campbell, Barnes, Parker, G. Eayrs, Burton, Blumkin, Epstein.
 Amos, Hodne, Rook, Whalen, Hannibal, Moon, Braude, Broad, Silsby, Chambers, Nelson.
 Marsh, Menagh, Torrey, Wollstadt, Shields, Bailey, Bane, Merritt, M. Allen, Sorenson.

GIRLS' SWIMMING

SWIMMING — Although swimming has always been a popular sport among Central girls, this year's classes were larger than usual with a total enrollment of seventy-five girls each semester. Classes are held at the Jewish Community Center pool under the direction of Mrs. Glee G. Meier.

Girls in advanced swimming classes work primarily for junior life saving emblems, and several older girls strive for senior life saving awards. Each year several girls pass their life saving tests and are qualified for life guards. Girls winning their junior awards this season are Elizabeth Allen, Mary Allen, Marjorie Maag, Elinor Marsh, Jane Eayrs, Janet Kilbourn, Margaret Moon, Blanche Petersen, Jane Sorenson, and Evelyn Wollstadt. Janet Campbell and Marion Whitmore were the only girls to gain their senior awards.

Both beginning and advanced swimmers work on individual achievements: one mile marathon, speed swimming tests, stunts in the water, perfection of strokes, diving.

Each semester a life guard is chosen by Mrs. Meier to help with the swimming classes. Margaret Anderson was life guard first semester; Laura Frances Bane was guard second semester.

BASKETBALL — Two-court basketball was a popular sport for girls this year. The sophomores, headed by Betty Nolan, won the inter-class tilt. On the winning team were Reynolds, Glasson, Beranek, Yaffee, and J. Lawson.

Central basket-shooters won second place in the telegraphic contest sponsored by the State League of Athletic associations, February 25. The contestants shot the eight baskets from designated points on the floor with Betty Nolan and Joan Broad completing the feat in eight shot. Two years ago Central won second place in the free throw contest and last year took third place.





FORENSIC SOCIETY

White, Cohen, Sherman, Seminara, Cherniss, Rosenbaum, Reuben, Zelinsky,
E. Silverman, S. Silverman, Wintroub, Crvin, D. Miller, Ryan, Gross, C. Miller,
Kirshenbaum, Marr, Rosewater, Kaplan, Stiefler, Stein, Stone, Christensen.

DEBATE

THE CENTRAL debate team, although unable to win first place in any of the tournaments in which it participated, compiled one of the best records of any of the school's competitive teams.

After giving all the aspirants a trial in the Missouri Valley league debates, Miss Sarah Ryan, debate coach, selected Herbert Kaplan '33, Albert Stein '33, and Robert Stiefler '34 as members of the team.

In the annual Midland tournament held at Fremont, Nebraska, Central entered two teams. The A team, Herbert Kaplan and Robert Stiefler, was defeated in the finals by Tech's A team. Central's B team, Joel Cherniss '33, Albert Stein, and S. MacAlvay Rosewater '34, was eliminated in the quarter-finals by the Tech B team.

The first Omaha school to be invited to the annual Drake tournament at Des Moines, Central lost to Winterset, Iowa, in the quarter-finals.

Central placed second in the city tournament; they won over North, South, Creighton, and Benson before losing to Tech in the final debate.

In the Nebraska district tournament of the National Forensic league, Central won first place. Although the debate team itself was defeated by North and Thomas Jefferson, the points won in the other contests gave first place to Central. Herbert Kaplan won the oratorical declamation for the second consecutive year; Katherine Stone '35 was third in the same contest. Albert Stein won the extemporaneous speaking; S. MacAlvay Rosewater placed second, and Claire Miller '34, third in the original oratory; Virginia Lee Long '33 won the dramatic declamation; Guinevere Ohlswager '33 was second in the humorous declamation.

The question for all debates this year was "Resolved: That at least one-half of all state and local revenues should be derived through sources other than tangible property."







STUDENT CONTROL

Aikin, Wyrick, Severinsen, Laverty, Wilson, Nielsen, Pechac, Fried, Eddy, Laserowitz, Stearns, Bordy, Cooper, Hennings, Dansky, Lerner, Williams, Nathan, Holland, Pederson, Snapp, Lee, Osborne, Baum, Pratt, Vasak, Kirshenbaum, Miloni, Marconnit, Cotton, Wood, Palmer, Doan, Fore, Auracher, Harrington, Collins, Shearer, Milliken, Brott, Simmons, Gerye, Johnson, Monsky, Buckland, Hubbard, Pros, Foster, Allis, Welsh, Slutsky, Resnick, Ernst, Monovitz, Swanson, DeVancey, Hopp, Sherrig, Marr, McDonald, Lipp, Whitebook, Thorpe, Moon, D'Andrea, Osoff, Speckter, Carter, Thomas, Gerke, Rhodes, Zook, Anderson.

CLUBS

CENTRAL'S ACTIVITY clubs for almost thirty years have had direct affiliation with the school's curriculum and have been under superintendence of the faculty. The thirty organizations form two divisions—service and departmental.

Prominent is the Student Control, which, among its varied and numerous accomplishments, preserves order during the lunch periods, assists the librarians, and tutors students. The largest organization, Central Colleens, fosters fellowship among the girls and promotes school projects. Ushers at all Central's performances, except the Road Show, are members of the Titian club. Organized in 1903, the Lininger Travel club holds the distinction of being Central's oldest society.

Two new clubs, Red Cross and Home Economics clubs, were organized this year. Freshmen who have done Red Cross work in grade schools have organized a chapter here to continue developing the spirit of voluntary service, promoting habits of health, and obtaining practice in citizenship. The Home Economics club aims to further interest in home economics.

The language clubs sponsor international friendship through the exchange of correspondence with boys and girls in foreign countries; the Discussion club studies international problems. The French clubs also present an annual play; Latin club sponsors Loquax, and Spanish club publishes El Heraldo; both are annual newspapers.

Service clubs, particularly the Lininger Travel club and Central Colleens, serve local institutions by dressing dolls and making toys for children, entertaining the aged, and providing inmates of institutions with Christmas and Thanksgiving dinners. The Central Committee furnishes ink for all study halls.





CENTRAL COLLEENS

Handley, Goodsell, Allen, Bane, Buckland, Hansen, Hennings, Larsen, Beber, Noe, D'Andrea, Berkowitz, Speckter, Gilbert, Fried, Fisher, Clark, Parks, Biurvall, Farber, Ashwood, Monsky, Sheehan, Silverman, Shearer, Nolan, Harris, Johnson, Welsh, Harrington, Holmstrom, Slutsky, Lipp.



CENTRAL COLLEENS

Patrick, Wickstrum, Woodruff, Campbell, Fawcett, Foster, Abbott, Forbes, Brennan, Andrews, Louis, Saxe, Weinstein, Schneiderwind, Thorson, Corkin, McFarland, Allis, Cornick, Rohrbough, Aiken, Shields, Beavers, Wiemer, Graham, Auracher, McCreary, Byrd, Soref, Goety, Blumkin.



CENTRAL COLLEENS

R. Kuehl, McCulley, Jensen, Amos, Bensen, Taylor, Sherrig, Harriss, E. Smith, Eggert, Petersen, Vogel,
Bickel, Goodsell, Petersen, Ackerman, Scholnick, Berner, Kraus, Pepper, Berkowitz, E. Kuehl, Prichard,
Robertson,
Reynolds, C. L. Smith, Tretiak, Braude, Harris, Backstrom, Hultman, Maystrick, Arbitman, Osoff, Cherniss,
Sommer.



CENTRAL COLLEENS

McDonald, Rosenbaum, Schwartz, Marconnit, Barish, Knudsen, Munkhof, McTaggart, Larson, Wolfe,
Gross, Eayrs, Allen, Hirsch, Baily, Strauss, Richards, Resnick,
Silverman, Stein, Bernstein, Funder, Rubnitz, Dansky, Beeson, Thomsen, Klaiman.



LOS SABIOS

Hart, Zimmerman, Adams, Alexander, Leflang, Taylor, Civin, Severinsen.
 Trussell, Nall, Schwartz, Miss Erixon, Hackler, Mrs. Vartanian, Miloni, Bentley, Schroeder, Robertson.
 Dodds, Locke, Lush, Mach, Gerye, Jones, Braig, Nimmo, Buono.
 Ripps, E. Whitebook, H. Whitebook, Fried, Amos, Fisher, Woodruff, Bittner, Lerner.



LATIN CLUB

Williams, Bavinger, Miller, Snapp, Maxwell, Brownlee, K. Hansen, Mattes, Carman, Dergan.
 Arbitman, Cohen, Goldblatt, Reynolds, Moran, Weaver, McClure, Dorinson, M. Dansky, Slosburg, L. White.
 Sessel, Fore, Stein, Buckland, Hoberman, F. Hansen, E. Dansky, Beeson, Rubnitz, Smith, McDonald.
 Klaiman, Tribulato, Kraus, Hultman, Sherrig, Taylor, Tunison, Fletcher, Hirsch, Doetz, Beavers.



LE CERCLE FRANCAIS

Friedman, Gilbert, Appleman, Hoyt, Moeller, Campbell, Indoe, Lindquist, Wright, Bickel,
 Dodds, Daugherty, Homann, Brott, Hall, Johnson, Goodsell, Allen, Milliken,
 Palmer, Newell, Meyers, Biurvall, Eldridge, Young, Harris, Welsh, Anderson, Beaton, Bliss, Shearer,
 S. Silverman, E. Silverman, Barr, Waechter, Humphrey, Miss Bozell, Byrd, Barish, Berkowitz, Kitchen,
 Rosewater, Miss Phelps.



GENTLEMEN'S FRENCH CLUB

Nash, Holland, H. Rees, Smith, Eisenstatt, Tatelman, T. Rees, B. Rogers,
 Bordy, Pilling, Clarke, Brookman, Sears, Wetherell, Kaplan, Stafford,
 Martin, C. Rogers, Wagner, Miss Bozell, Ranney, Fradenburg, Marshall.





DER DEUTSCHE VEREIN

Mollenhauer, Lee, Dimke, Piesch, Yeager, Laserowitz.
Hollcroft, Graham, Pool, Ross, Osoff, Bedell, Sommer.



GIRLS' NATURAL SCIENCE CLUB

Bickel, Van Buskirk, C. Ross, Buckland, Moran, Yost, Green, Armstrong, Rehtmeyer, Weaver.
Lipp, Petersen, Backstrom, Hulst, Fitz-Dowd, Amos, Fawcett, McClure, MacDougal, C. Hindman, H. Hindman.
Sommer, Arbitman, B. Ross, Griffith, Greusel, Antrim, Howell, Henningson, McMartin, Byrd.



MATHEMATICS SOCIETY

Harrington, Hansen, Anracher, Dansky, Harriss, Petty, Beeson.
 Bane, Sprague, Bailey, Slutsky, Rubnitz, Kirshenbaum, Marr, Vogel.
 Silverman, Whitebook, Sherrig, Eldridge, Wood, Harris, Taylor, Kraus.



MATHEMATICS SOCIETY

Wolfe, Weinstein, G. White, Harrison, Row, Bourke, Zimmerman, Dansky, McMannus, Pilling.
 Zelinsky, Holyoke, Reuben, Mills, Rodwell, Thompson, Cunningham, Yeager, Cooper, Bordy.
 Lascerowitz, Trobaugh, Martin, Hackler, Braun, Harmon, Traub, Jones, Marshall, Hurtz.





LININGER TRAVEL CLUB

Dow, Armstrong, Eldridge, Locke, Daughterty, Nelson, Moran, Vance, Guiou, Beaton, Houser, Campbell, Woodruff, Backstrom, Maystrick, Hultman, Hall, Hoyt, Johnson, Milliken, Dodson, Wright, Fore, Simmons, Brott, Petersen, Goodsell, Harris, Young, Baldwin, Shearer, Porter, Bickel, Lambert, Kelly, Tunison, Burt, Barish, Berkowitz, Bichlmeir, Kitchen, Kulakofsky.



PROJECT COMMITTEE

Stelzer, Armstrong, Cockle, Baker, Kennedy, Hosman, Bell, Gershater, Finer, D. Carlson, Doran, Noble, Byrd, Miss Andrews, Miss Clark, Bruhn, Miller, Haugh, Bosin, DeBruler, Mock.
Not in picture: J. Carlson, Corrington, Fry, Hopper, Neafus, Shumow.



GREENWICH VILLAGERS

Indoe, Nall, Amos, Axtell, Zook, Berkowitz, Koory,
 Wigton, Gaughran, Kavan, Knudsen, Goodsell, Johnson, Goldsmith, Bexten,
 Hammer, Buettenback, Kreculov, Frohardt, Hall, Rymer, Vance.
 Not in picture: Bock, Yousem, Wood, Miller.



GIRLS' ATHLETIC ASSOCIATION

Ensminger, Payne, Handley, Guenther, Keeley, Schneiderwind, Larmon, Saxton, Swoboda, Suing, Parker,
 Reynolds,
 Tauchen, Richardson, Jensen, M. Anderson, Chadwell, V. Anderson, Funder, Broad, Fletcher, D'Andrea, Noc,
 Yaffee, Sprague, Rivett, E. Kuehl, Thorson, Kennedy, R. Kuehl, J. Lawson, G. Eayrs, Waidley, Wiemer,
 Rothkop.
 Berkowitz, Hassert, Larson, Nolan, Meier, Andersen, L. Lawson, Burt, Borman, Jones, Jackson.





CENTRAL HIGH PLAYERS

Nelson, Rymund, Kolbo, Smith, Morris, Harmon, Brown, Haney, Helgren, Bexten, Vance, B. Koory, Lima, Field, Crowley, Hansen, Stearns, Sheehan, Mullen, Cooper, Benson, Runyan, Campbell, Freeman, Rachman, Kemper, Moore, Leflang, Alexander, Bowman, Freedman, Elarth, Koory, Smith, Maystrick, McCreary, Hopkins, Bowers, Pincero, Ross, Jones, Ralphs, Griffith, Anderson, Marconnit, Grobee, Slutsky, Harriss, Silverman, Marr, Rohacek, Vodra, Whitebook, Thompson, Wilson, Long, Cropper, Ohlswager, Auracher, Epplen, Corkin.



CENTRAL COMMITTEE

Baker, Mattes, Wiemer, Weber, Wetherell, Ranney, Rogers, Livermore, W. Hart, Schroeder, Kenny, Pilling, Harrison, Burke, Edgerly, Sears, Clarke, Slater, Bittner, Field, Houser, J. Hart, Milliken, Holmstrom, Locke, Gordon, Hall, Young, Kennedy, Hoyt, Woodruff, Reynolds, Blaufuss, Gould, Dodson, Waechter, Goodbinder, Horwitz, Kitchen, Travis, Dodds, Humphrey, Yant, Bliss, Lindquist, Indoe, Barr, Kelly, Lambert.



ORCHESTRA

J. Rushlau, Piccola, Basso, Caniglia, Northcutt, Morton, Rees, Allis, Miller, Dodds, Mowbray, Duff, Almond, Ruma, Weisman, Churchill, Nielsen, Rowley, Jensen, Smith, Christensen, Lustgarten, Bednar, Dergan, Hornstein, Soshnik, Cleveland, Nourse, Sherman, Ewing, Carp, Tuchman, Rimmerman, Bentley, P. Rushlau, Finkel, Grandinette, Saylan, Maystrick, Gross, Parks, Lang, Holmstrom, Beber, Amos, Campbell, Harrington, Whitebook, Silverman, Cockle, Saxton, Aikin.
 Members not in picture: Fiedler, Benson.



TITIAN'S

Shields, Pool, Stone, Kennedy, Atwood, Knapp, Hopp, Peake, Byerly, Prime, Gee, Loder, Cole, McArthur, Winget, Thall, Zook, Ashwood, Vogel, Hollingshead, Goldsmith, Jensen, Zook, Byrd, Nolan, Peterson, Ross, Whitebook, Leshar, Carter.





HOME ECONOMICS

Horwitz, Ackerman, Corgive, Foster, Eayrs, Bernstein, Talbitzer, Bickel, Duffield, Bexten, Patterson, D. Carlson, Changstrom, Santi, Lewis, Ensminger, Blankenfield, Brooks, Wheat, Divoky, Peterson, Whinnery, R. Kuehl, Moore, Janzen, Goodsell, Backstrom, Backlund, Nielsen, D. Merritt, Kuznit, D'Andrea, Moon, Bertagni, Lipan, Larmom, Griffith, L. Merritt, Homann, Horejs, Pross, A. Pindero, Morearty, Henningson, Merchant, Grasso, Laudi, E. Kuehl, Archibald, Torrey, Newmeyer, Pratt, Prihoda, Van Buskirk, Ross, Ludaska, Burkett, Buettenback, Basl, Major, Thomas, Richardson, Kutsche, Armstrong, C. Carlson, Hughes, Schryver, J. Holst, T. Holst, Dorothy Heintze, Doris Heintze, Schneiderwind, E. Pindero, Larsen, Baysdorfer, Bowen, Amos, Stockard, Woodruff.

SENIOR POPULARITY CONTEST WINNERS

IDEAL CENTRAL GIRL JEAN WOODRUFF	BEST MUSICIAN JEAN HUMPHREY	BIGGEST FILIBUSTERER JAMES CRADDOCK
MOST LIKELY TO SUCCEED MABEL WRIGHT	BEST DRESSER ODESSA YANT	BEST ACTOR ROBERT McCUNE
MOST POPULAR ESTHER BLISS	BEST VOICE VIRGINIA SPALDING	WORST WOMAN HATER BILL BEST
BEST SCHOLAR FRANCES HANSEN	MOST PERSONALITY JEAN WOODRUFF	BEST ATHLETE JOHN HOWELL
PRETTIEST JEANNE BURVALL	SWEETEST DORIS JOHNSON	BEST LINE WILL CORSON
BEST NATURED JEAN HUMPHREY	BEST DANCER BETTY MOSS	MOST ARTISTIC HOMER FROHARDT
PEPPIEST BETTY MOSS	IDEAL CENTRAL BOY ROBERT BRAUN	BEST MUSICIAN PAUL NIELSEN
BEST ACTRESS VIRGINIA LEE LONG	MOST LIKELY TO SUCCEED WILLIAM B. HART	BEST DRESSER ROBERT BRAUN
MOST SOPHISTICATED MARGARET ROGERS	MOST POPULAR JACK DOUGLAS	BEST DANCER WILL CORSON
BEST ATHLETE MARY SPRAGUE	BEST SCHOLAR CARL ERICKSON	BEST VOICE CONRAD BUELL
BEST LINE BETTY MOSS	BEST LOOKING ROBERT LLOYD	BEST CAVEMAN RICHARD E. KELLEY
MOST ARTISTIC BEATRICE KOORY	MOST HAPPY-GO-LUCKY WILL CORSON	WITTIEST ROBERT BRAUN





AUTOGRAPHS