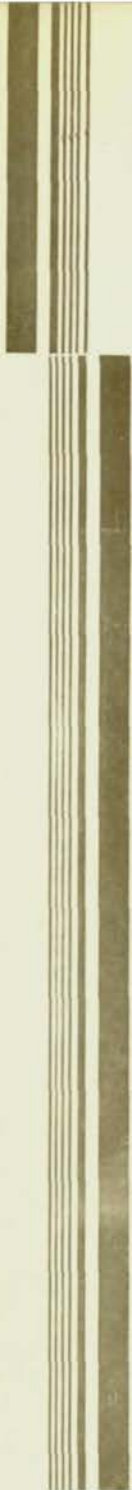


CHS 1932

O-BOOK



STAFF

EDITOR-IN-CHIEF

ERMAGRACE REILLY

ASSOCIATE EDITORS

ELIZABETH FORE

PAUL FRUMKIN

CIRCULATION MANAGER

JOHN MOUCKA

BUSINESS MANAGER

RAYMOND ELLIOTT

ART EDITORS

LOUISE SENEZ

JANET WOOD

LITERARY ADVISER

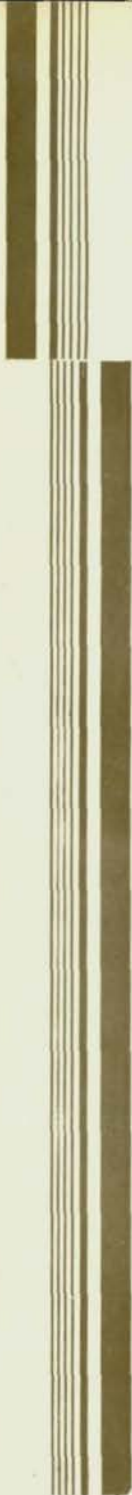
ANNE LANE SAVIDGE

ART ADVISER

MARY L. ANGOOD

BUSINESS ADVISER

ANDREW NELSEN



O-BOOK
OF THE
SENIOR CLASS
CENTRAL
HIGH SCHOOL
OMAHA
NEBRASKA
VOLUME XLVI
1932

CONTENTS

PART I

ADMINISTRATION
SENIOR ALBUM

PART II

HONORS
ATHLETICS
MILITARY

PART III

CLUBS
SNAPSHOTS





J. H. BEVERIDGE
SUPERINTENDENT OF SCHOOLS

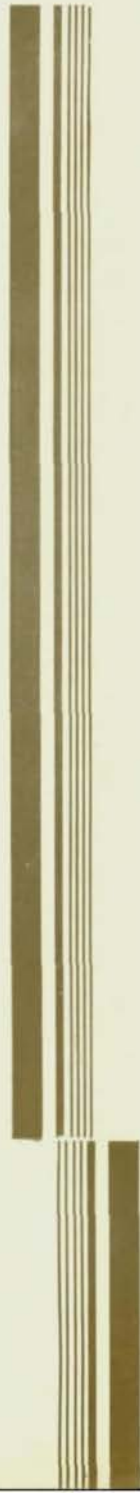
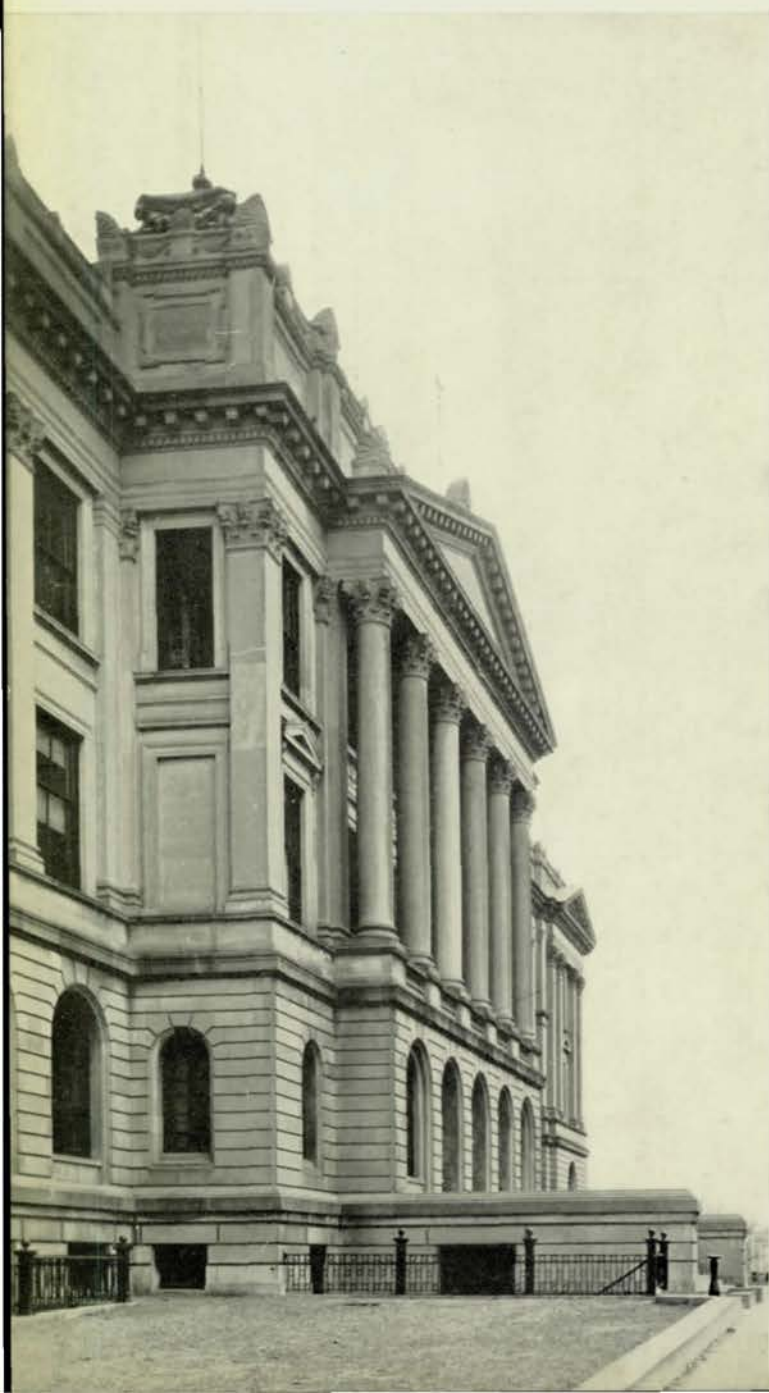


BELLE RYAN
ASSISTANT PRINCIPAL



LEON O. SMITH
ASSISTANT PRINCIPAL

WEST ENTRANCE
CENTRAL HIGH SCHOOL





J. G. MASTERS
PRINCIPAL

FACULTY

JOSEPH G. MASTERS
PRINCIPAL

JESSIE M. TOWNE
ASSISTANT PRINCIPAL
DEAN OF GIRLS

FRED HILL
ASSISTANT PRINCIPAL
DEAN OF BOYS

H. A. SENTER
DEAN OF FACULTY

ENGLISH

SARA VORE TAYLOR
BERTHA NEALE
TILLIE C. ANDERBERRY
NELL BRIDENBAUGH
JULIA T. CARLSON
HELEN G. CLARKE
GRACE GILBERT
AUGUSTA KIBLER
GRACE H. McMANUS
MARGARET A. MUELLER
HELEN L. SOMMER
LOUISE STEGNER
MARTINA SWENSON
IDA A. WARD
ALICE WEST

MATHEMATICS

ANDREW NELSEN
AMANDA E. ANDERSON
G. E. BARNHILL
R. B. BEDELL
L. N. BEXTEN
MAYBEL BURNS
GRACE E. FAWTHROP
ANNA PORTER HAYNES
PEARL JUDKINS
SARAH A. RYAN

HISTORY

GENEIVE W. CLARK
IRMA COSTELLO
MARY E. ELLIOTT
EDITH C. FIELD
ELSIE C. FISHER
JULIETTE GRIFFIN
ELIZABETH KIEWIT
MARY A. PARKER
NELLE RANDALL

MODERN LANGUAGES

BESS M. BOZELL
BARBARA CHATELAIN
EVA M. ERIXON
ELLA L. PHELPS
PEARL ROCKFELLOW
MARGARITA VARTANIAN

ANCIENT LANGUAGES

BERNICE S. ENGLE
ELIZABETH E. CRAVEN
ANNIE C. FRY
JANE T. FULTON
BESSIE E. RATHBUN

PHYSICAL SCIENCE

H. A. SENTER
F. H. GULGARD
J. G. SCHMIDT

NATURAL SCIENCE

CAROLINE E. STRINGER
JENNIE E. HULTMAN
HELEN LANE
HELEN M. SCOTT

SOCIAL SCIENCE

AUTUMN DAVIES
F. Y. KNAPPLE

COMMERCIAL

EDNA S. DANA
ALICE M. HOLMES
J. W. LAMPMAN
HARRIET RYMER
ANGELINE TAUCHEN

HOUSEHOLD ARTS

CHLOE E. STOCKARD

CAFETERIA

RUBY RICHARDSON



H. A. SENTER
DEAN OF FACULTY



JESSIE M. TOWNE
ASSISTANT PRINCIPAL
DEAN OF GIRLS



FRED HILL
ASSISTANT PRINCIPAL
DEAN OF BOYS

FACULTY

MUSIC

CAROL MARHOFF PITTS
IRENE HASKINS JENSEN
ELSIE HOWE SWANSON
HENRY G. COX

PHYSICAL TRAINING

GLEE GARDNER CASE
JOHN B. SCOTT

EXPRESSION

MYRNA V. JONES
KATHERINE GALLAGHER
DORIS HOSMAN HAHN

LIBRARY

ZORA SHIELDS
CATHERINE S. BLANCHARD
HAZEL CRANDALL
MAXINE TEWS

MECHANICAL ARTS

LOUIS N. BEXTEN
O. J. FRANKLIN

ART

MARY L. ANGOOD

JOURNALISM

ANNE LANE SAVIDGE

OFFICE

BESSIE GALLAGHER
RUTH KRCAL
JENNIE ROBERTS

REGISTRAR

ADRIAN WESTBERG

CLERK OF BOOKROOM

PAULINE HARTNETT



**SENIOR
SPONSORS**

**H. A. SENTER
JESSIE M. TOWNE**



**MARGARITA VARTANIAN
PEARL ROCKFELLOW**



**LOUISE STEGNER
BESS M. BOZELL**



BROWNING EAGELSTONPRESIDENT, JUNE
NATIONAL HONOR SOCIETY

Register Staff (4); Purple and White Handbook (4); Student Association, Board of Control (4); Road Show (4); Football (3,4), Co-Captain (4); Boys' O Club (3,4); Mathematics Society (4); Gentlemen's French Club (4); Citizenship Contest (4); Athletic Honor Society (3); Junior Honor Society (2,3); Tennis (3,4), Captain (4); Wrestling (2,3); Baseball (2); Student Control (3).

*A leader everywhere he goes.
A friend to everyone he knows.*

SANCHA KILBOURNSECRETARY, JUNE
NATIONAL HONOR SOCIETY

O-Book Staff (4); Register Staff (4); Purple and White Handbook (4); Quill and Scroll (4); Central High Players (4); Road Show (3,4); Library Monitor (4); Student Control (3); Speakers' Bureau (3); Latin Club (2,3); Girls' Junior Glee Club (1,2), Secretary (2); Central Colleens (1,2); Gym Club (2); Make-up (2); Swimming (2); Basketball (1); Hockey (1); Volleyball (1); Girl Reserves (1); Character Traits Committee (1); Junior Honor Society (1).

Clever, and an attractive favorite.

JOHN SANDHAMSERGEANT-AT-ARMS, JUNE
NATIONAL HONOR SOCIETY

O-Book Staff (4); Regiment (1,2,3,4), Captain and Adjutant (4); C.O. C., Secretary (4); Student Association, Chairman of Reception Committee (4); Monitors' Council (4); Road Show (3,4); Gentlemen's French Club (4); Library Monitor (4); Crack Squad (3); Junior Honor Society (1,2,3), Vice-President (1); Student Control (3); Atlas Club (1,2), President (2); Interclub Council (2); Hi-Y (1,2,3,4); Basketball (1,2); Purple Legion (2).

One of our best and most dependable.

EVA JANE SINCLAIRREPORTER, JUNE
NATIONAL HONOR SOCIETY

O-Book Staff, Girls' Sports Editor (4); Register Staff (4); Purple and White Handbook (4); Book Reviewers' Staff (3,4); Quill and Scroll, Secretary-Treasurer (4); Lininger Travel Club (4); Central Colleens (3,4), Chairman (4); Library Monitor (4); G.A.A. (1,2,3,4), Secretary-Treasurer (4); Basketball (1,2,3,4); Baseball (1,2,3); Volleyball (1,2,3); Gym Club (3); Junior Honor Society (3); Road Show (2).

One so sweet and clever is hard to find.

HARRY MUNSON

VICE-PRESIDENT, JANUARY

A real man.

MARTHA WOOD

VICE-PRESIDENT, JUNE

O-Book Staff (4); Los Sabios, Vice-President (4); Mathematics Society (3,4), Secretary (4); Lininger Travel Club (4); Junior Honor Society (1,2,3); Speakers' Bureau (2,3); Secretary (3); Library Monitor (4); Le Cerle Francais (2,3); French Play (2); "The Rear Car" (4).

*Happy, peppy, always sunny
She is known to all as "Bunny."*

DALLAS K. LEITCH

TREASURER, JUNE

O-Book Staff (4); Register Staff (3,4), Managing Editor (4); Regiment (1,2,3,4), Captain (4); C.O.C. (4); Quill and Scroll, President (4); Gentlemen's French Club (4); Road Show (3,4); Mathematics Society (2,3,4); Student Control (3); Forensic Society (1,2); Orchestra (1); French Play (4).

*No matter what he undertakes
He always excels.*

ELIZABETH RHOADESSERGEANT-AT-ARMS, JUNE
NATIONAL HONOR SOCIETY

O-Book Staff (4); Mathematics Society (3,4), Vice-President (4); A Cappella Choir (4); Interclub Council (3,4); Monitors' Council (4); Library Monitor (4); Central Committee (2,3,4), Secretary (4); Central High Players (4); Opera (4); Girls' Senior Glee Club (3); Girls' Junior Glee Club, Vice-President (2); Speakers' Bureau (2,3); Junior Honor Society (2,3); Character Traits Committee (1).

Versatile and charming.

JAMES GREGORY

PRESIDENT, JANUARY

Outstanding and industrious.

CECELIA MORIARTY

SECRETARY, JANUARY

Titians (1,2,3,4), Head Usher (4); Student Control (4); Library Monitor (4); Girls' Senior Glee Club (3); Girls' Junior Glee Club (2); Baseball (1); Volleyball (1); Basketball (1).

A flaming athlete.





RAY THOMPSON

SERGEANT-AT-ARMS, JANUARY

Quite the ladies' man is Ray.



TJARK RIDDLE

SERGEANT-AT-ARMS, JANUARY

O-Club (1,2,3,4); Football (1,2).

*Initiative and ambition
Scale toward a high position.*



ARTHUR SPAR

REPORTER, JANUARY

A Cappella Choir (4); Opera (4); Forensic Society, Secretary (4); O-Club (2,3); Register Staff (3); Wrestling (3); O-Book Staff (3); Boys' Senior Glee Club (3); Boys' Junior Glee Club (2); Football (1).

An athlete, a singer, and a writer.



HELEN ADAIR

Gym Club (2); Girls' Natural Science Club (2); Swimming (2).

*Turn your head—thus
Personality plus!*



MURIEL ALLARDYCE

Swimming (4); Library Monitor (4); Girl Reserves (3,4); Central Colleens (2); Girls' Senior Glee Club (2); Girls' Junior Glee Club (1).

She wins because she tries.



FAITH ABBOTT

Latin Club (4); Girls' Junior Glee Club (4); Library Monitor (4); Girls' Natural Science Club, Sergeant-at-Arms (3); Student Control (3).

A bonny lass.



RUTH ALLEN

NATIONAL HONOR SOCIETY

O-Book Staff (4); Register Staff (4); Central Colleens, Chairman (4); Library Monitor (4); Le Cercle Francais (3,4); Lininger Travel Club (3,4); Greenwich Villagers (3,4); Titians (1,2,3,4); President (4), Vice-President (3); Secretary-Treasurer (2); Inter-Club Council (3); Junior Honor Society (2,3); Road Show (1).

*A brighter titian nobody knows
She wins honors wherever she goes.*



NANCY ABBOTT

Student Control (4); Central Colleens (4); Library Monitor (4).

She has that quiet personality.



ARTHUR ABRAMS

Student Control (4); Forensic Society (4); Boys' Junior Glee Club (4).

Art is game for everything.



JUNE AMES

Opera (3,4); Library Monitor (4); A Cappella Choir (3,4); Road Show (3); Junior Honor Society (2,3); Girls' Senior Glee Club (2); Girls' Junior Glee Club (1).

*Her dimples entrancing
Her eyes ever dancing.*

DOROTHY M. ANDERSEN

*Tho' she's quiet, it's alarming
How her silence makes her charming.*

DOROTHY J. ANDERSON

NATIONAL HONOR SOCIETY

Opera (2,3,4); Road Show (1,3,4); Central High Players (3,4), President (4); A Cappella Choir (3,4); Library Monitor (4); State Music Contest (3); Girls' Senior Glee Club (2); Junior Honor Society (2); Girls' Junior Glee Club (1); Student Control (1); "Daddy Long-Legs" (4).

*Aloof — her style,
Bewitching — her smile.*

FRANK ANDERSON

A fine Central boy.

JIM ANDERSON

Boys' Senior Glee Club (2,3); Boys' Junior Glee Club (1); Opera (3); Golf (2,3); Football (2,3); Baseball (2).

Easy come and easy got

RICHARD ANDREWS

*His efficiency and zeal
We always feel.*

VERNA ARMSTRONG

O-Book Staff (4); Register Staff (4); Purple and White Handbook (4); Book Reviewers' Staff (4); Le Cercle Francais (3,4); Central Committee (4); Lininger Travel Club (4); Central Colleens (4); Quill and Scroll (4); Library Monitor (4); Latin Club (2); Girls' Junior Glee Club (2); French Play (4).

Chic and smart.

SYBIL ASHBY

Student Control (2,4), Secretary-Treasurer (4); Central Colleens (4); Spanish Club (3); Central High Players (2,3); Speakers' Bureau (2); "The Rear Car" (4).

Cute personality.

DOROTHY AUSTIN

Register Staff (4); Girl Reserves (2,3); French Play, Make-up (2); Road Show, Make-up (2); Central Colleens (1,2); Make-up (2); Advertising Contest (1).

Gifted in business ability is this striking brunette.

GALE AYDELOTTE

O-Book Staff (4); Register Staff, Circulation Manager (4); Quill and Scroll (4); Spanish Club (3); Spanish Play (3).

*Wild poetry and dizzy rhyme
Gale writes them all the time.*

JANET BAIRD

Stately, fair, and tall.





ROBERT BAKER

Library Monitor (4); Swimming (3); Track (3).

His pep is real, his laugh is hearty.



ROBERT BARBEE

Regiment (1,2,3,4), Second Lieutenant (4); C.O.C. (4); Boosters' Club (3); Basketball (2,3); Track (2,3); Football (2); Boys' Junior Glee Club (1).

A flashing smile and black curly hair Announce to all that Bob Barbee's there.



ELOISE BARNHART

Central Colleens (4); Los Sabios (2,3), Secretary-Treasurer (3); Girls' Natural Science Club (3).

Impulsive and gay.



FLORENCE BARTLETT

Azure eyes and flaxen hair.



MARGARET BEDELL

NATIONAL HONOR SOCIETY

Orchestra (1,2,3,4), Vice-President (4), Librarian (4); State Music Contest (3,4); Opera (3,4); Road Show (3,4); French Play (4); Mathematics Society (2,3,4), Sergeant-at-Arms (3); Lininger Travel Club (4); Monitors' Council (4); Library Monitor (4); Central Colleens (2,3,4), Chairman (3,4); Le Cercle Francais (4); Swimming (3); Junior Honor Society (1,2,3); M.I. N.K. Contest (3).

A's just fall her way.

BETTY ANN BEDWELL

Los Sabios (4); Mathematics Society (4); Central Committee (4); Speakers' Bureau (2).

Oh, so nice!

GRENVILLE BEEM

Boys' Natural Science Club (1).

Our supporting (Beem).

BEATRICE BERANEK

NATIONAL HONOR SOCIETY

Los Sabios (4); Lininger Travel Club (3,4); Central Colleens (2,3,4); Student Control (4); Library Monitor (4); A Cappella Choir (3,4); Girl Reserves (1,2,3,4); Treasurer (3), President (4); North Central Music Supervisors' Convention (3); Southwest Music Supervisors' Convention (3); Junior Honor Society (1,2,3); Girls' Senior Glee Club (3); Girls' Junior Glee Club (3); Central Colleens, Secretary (2,3); Stamp Club (2).

A good student with plenty of personality.

EDWARD BINKLEY

NATIONAL HONOR SOCIETY

Regiment (1,2,3,4), Captain (4); C.O.C. (4); Student Association, Board of Control (4); Boys' O-Club (3,4); Road Show (4); Football (1,2,3,4); Track (4); Hi-Y (1,2,3,4); Library Monitor (4); Junior Honor Society (1,2,3); Basketball (1,2,3); Baseball (1,2,3); Speakers' Bureau (1,2), Vice-President (2); Purple Legion (2).

Small of size, but large of fame, Edward Binkley is the name.

HARRY BLACK

O-Book Staff (4); Regiment (1,2,3,4), Second Lieutenant (4); C.O.C. (4); Los Sabios, President (4); Boys' O-Club (2,3,4); Track (2,3,4).

Good looking, determined, and fast on our track.

HELEN BLIXT

O-Book Staff (4); Register Staff (4); Central High Players (4); Central Colleens (4); Girl Reserves (4); City Editor "Tech News" (3); Associate Editor "Rustler," Fremont High (3); Vice-President, Co-gide, Tech High (3); Year Book, Fremont High (2); Black and Gold Literary Society, Fremont High (2, 3).

Quite the journalistic girl!

DONALD BLOOM

Regiment (1, 2, 3, 4), Captain (4); Engineers (3,4); C.O.C. (4); Road Show (1, 3, 4); Monitors' Council (4); Library Monitor (4); Football (3,4); Gentlemen's French Club (4); Hi-Y (2,3,4); A Cappella Choir (3); Crack Squad (3); Speakers' Bureau (2,3); State Music Contest (2); National Music Supervisors' Convention (2); Opera (2); Basketball (2); Boys' Senior Glee Club (2); Boys' Junior Glee Club (1); Junior Honor Society (1); Atlas Club (1).

He's always obliging to the ladies.

MARJORIE BOLDEN

Book Reviewers' Staff (4); G.A.A. (2,3); Baseball (2).

Generous and dependable.

RUTH BORDY

Library Monitor (4); Central Colleens (4); Girls' Natural Science Club (3); Girls' Junior Glee Club (1).

Her manner is calm and pleasant.

VIRGINIA BOUCHER

State Athletic Award (4); G.A.A. (2,3,4), President (4); Baseball (1, 2, 3, 4); Captain (1, 2, 3, 4); Swimming (3,4); Life Guard (4); Tennis (1,2,3,4); Golf (1,2,3,4); Basketball (1,2,3,4); Captain (1,2,3,4); Hockey (1, 2, 3, 4), Captain (3, 4); Library Monitor (4); Inter-Club Council (3); Central Colleens (1,2,3), Chairman (3); Gym Club (2,3), Vice-President (3); Swimming Pageant (2,3); Road Show (2).

She's outstanding in all sports.

JAMES BOWER

Regiment (1, 2, 3, 4).

Take it from us, Jim is O. K.

BERNARD BRISON

Library Monitor (4); Track (4); Boys' O-Club (3); Swimming (3); Student Control (2,3); Los Sabios (1,2,3); Junior Honor Society (2); Inter-Club Council (2); Boys' Junior Glee Club (1).

With effortless, desirable nonchalance he earns his good grades.

DOROTHY BROWN

Le Cerele Francais (2,3,4), President (4); Central High Players (2, 3,4); Liminger Travel Club (4); Central Committee (4); Library Monitor (4); Speakers' Bureau (1, 2,3); Road Show (2,4).

Lively, giggling Dot.

RICHARD BROWN**NATIONAL HONOR SOCIETY**

Regiment (1,2,3,4); First Lieutenant (4); C.O.C. (4); Road Show (4); Student Control (4); Football (1,2,3,4); Hi-Y (1,2,3,4); Biology Round Table (2,3,4); Central Committee (4); Junior Honor Society (1,2,3); Mathematics Society (3); Latin Club (3); Basketball (1,2); Boys' Junior Glee Club (2); Costumes (2).

A fine fellow who gets finer as you know him better.

STANLEY BROWN

Student Control (4); Road Show (2,4); Central High Players (4); Junior A Cappella Choir (4); Der Deutsche Verein (3,4); Discussion Club (4); Biology Round Table (4); Boys' Junior Glee Club, Treasurer (3); Latin Club (1,2); Dramatic Club (1,2); "The Rear Car" (4).

*Dancer, singer, actor, too,
Many times he's entertained you.*



**JOHN BUCHANAN**

NATIONAL HONOR SOCIETY

Register Staff (3,4), Circulation Manager (4); Quill and Scroll (3,4); Regiment (1,2,3,4), Captain and Personnel Adjutant (4); C.O.C. (4); Central Committee (4); Library Monitor (4); Road Show (4); Student Control (2,3); Mathematics Society (3); Junior Honor Society (1,2,3); Engineers (4).

Snappy, spicy, full of wit, He's got "that," "them," "those," and "it."

**DICK BUELL**

Regiment (1,2,3,4); First Lieutenant (4); C.O.C. (4); Road Show (4); Gentlemen's French Club (4); French Play (3,4); Swimming (1,2,3,4); Boys' O-Club (1,2,3,4); Mathematics Society (2,3); Speakers' Bureau (1,2,3).

Handsome, husky, big and wise But Dick gets "Dots" before his eyes.

**ELEANOR BURKE**

Road Show (3,4); Central Committee (3,4); Le Cercle Francais (4), Sergeant-at-Arms (4); Library Monitor (4); French Play (2).

She has that certain "something" which attracts.

**LIBBIE BURSTEIN**

Student Control (4); Central Colleens (1,4); Girls' Senior Glee Club (3,4); Library Monitor (4); Girls' Junior Glee Club (3); Junior Honor Society (1).

A regular songster.

**DOROTHY BUSH**

NATIONAL HONOR SOCIETY

O-Book Staff (4), Club Editor (4); Register Staff (4); Purple and White Handbook, Associate Editor (4); Book Reviewers' Staff (3,4); Quill and Scroll (4); Latin Paper (4); Central Colleens (2,3,4); Girls' Natural Science Club (2,3,4), President (4), Secretary (3); Latin Club (3,4); Library Monitor (4); Junior Honor Society (2,3); Student Control (3).

She takes all her honors with becoming grace.

MILLICENT CAMERON

Oh, that Suthun accent!

KATHLEEN CAMPBELL

Road Show Make-up (4); A Cappella Choir (4); Girls' Senior Glee Club (4); Student Control (3); Opera Make-up (2); Girls' Junior Glee Club (1).

Petite and gracious.

MAURICE CAMPBELL

Regiment (1,2,3,4), Second Lieutenant (4); C.O.C. (4); Road Show (4); Hi-Y (1,2,3,4); Basketball (1,2,3,4); Golf (3); Track (2).

When you know him, he isn't so shy.

CARSTEN CARLSEN

Boys' O-Club (1,2,3,4), President (3); Football (1,2,3,4); Basketball (1,2,3,4), Captain (4); Baseball (1,2,3,4); Boys' Senior Glee Club (1); Boys' Junior Glee Club (1).

Central's most outstanding athlete.

GLENN CARMAN

NATIONAL HONOR SOCIETY

O-Book Staff (4); Biology Round Table (2,3,4), President (4); Inter-Club Council (3,4), Co-Chairman (4); Monitors' Council, President (4); Latin Club, Vice-President (4); Latin Paper, Circulation Manager (4); Discussion Club (4); Student Control (4); Library Monitor (4); Junior Honor Society (1,2,3); Regiment (1,2).

Calm, industrious, studious Glenn Will take his place with famous men.

WILLIAM CARNAZZO

NATIONAL HONOR SOCIETY

Wrestling (3,4), Captain (4); Boys' O-Club (3,4); Library Monitor (4); Football (4); Inter-Club Council (4); Boys' Senior Glee Club (3); Boys' Junior Glee Club (1,2,4); President (4); Junior Honor Society (1,2,3); Regiment (1).

Anyone can tell you he's brainy and ambitious.

JAMES CHADWELL

Register Staff (4); Regiment (1,2,3,4), First Lieutenant (4); C.O.C. (4); Basketball (1,2,3,4); Boys' O-Club (3,4); Golf (3,4); Track (3,4); Athletic Honor Society (3).

"Blushing Jim is a star at basketball and he also shines in golf and track."

LUCILE CHALOUPKA

Los Sabios (4); Library Monitor (4); Junior Honor Society (1,2); Volleyball (1,2); Baseball (1); Swimming (1).

A good student.

FRANK CHANGSTROM

O-Book Staff (4); Register Staff (3,4); Sports Editor (4); Purple and White Handbook (4); Student Control (3); Regiment (1,2,3); Football (2).

"Papa" of the Register staff.

MAE CHIN

O-Book Staff (4); Art Contest (4); Central Colleens (3,4).

Small — but oh my!

CORINNE CLAFLIN

Road Show (4); Central Colleens (4); Girls' Natural Science Club (2); Atlas Club (4); Library Monitor (4); Dog Fanciers' Club (2); G.A.A. (2); Basketball (1,2); Baseball (1); Girls' O-Club (1); Boosters' Club (4).

Dances her way into everyone's heart.

EDWARD CLARK

NATIONAL HONOR SOCIETY

Register Staff (3,4), Editor-in-Chief (4); Quill and Scroll (3,4); Book Reviewers' Staff (3,4); President (4); Opera, Lead (4); French Play (4); Monitors' Council (3,4), President (4); Library Monitor (3,4); A Cappella Choir (3,4); State Teachers' Convention (4); Student Control (1,2,3); Boys' Senior Glee Club (3); Boys' Junior Glee Club (3); Stage Properties (3); Junior Honor Society (1,3); Regiment (1,2); Biology Round Table (1,2); Natural Science Club (1).

As singer, actor, humorist, editor, Well—he has no close competitor.

NADYNE CLARK

Girls' Senior Glee Club (4); Girl Reserves (3,4); Girls' Junior Glee Club (2,3); G.A.A. (2).

She certainly is smart.

WARD COMBS

Regiment (1,2,3,4), Captain and Quartermaster (4); C. O. C. (4); Road Show (4); Engineers (3,4); Central High Players (4); Gentlemen's French Club (4); Student Control (3).

When our Ward comes in Boredom gets it on the chin.

CHARLES CONDON

Baseball (3,4); Los Sabios (4); Speakers' Bureau (3).

A student and athlete of real ability.





HOWARD COOKE

Regiment (1,2,3,4), First Lieutenant and Aide (4); C.O.C. (4); Road Show (4); Football (1,2,3,4); Basketball (1,2,3,4); Track (4); Hi-Y (1,2,3,4), Treasurer (2); Gentlemen's French Club (3,4), Treasurer (4); Central High Players (1,2,4); Speakers' Bureau (1,2); Inter-Club Council (2); Engineers (4).

"Mighty Man" Cooke.



ADELE COTE

Central High Players (4); A Cappella Choir (4); Junior A Cappella Choir (4); Central Colleens (1,2,3,4); Girls' Senior Glee Club (3); Girls' Junior Glee Club (1,2); Student Control (1).

She has a fine sense of humor.



RICHARD COZAD

Regiment (1,2,3,4), Second Lieutenant (4); C.O.C. (4); Road Show (4); Track (2,3,4); Basketball (2,3); Stage Properties (3).

A regular gentleman--prefers blonds.



RUTH CRAIN

Baseball (3); Basketball (2); Girls' Senior Glee Club (2); Senior Play (2); Girls' Junior Glee Club (1).

A fine worker.



HELEN CROW

NATIONAL HONOR SOCIETY

O-Book Staff (4); Mathematics Society (3,4); Central Colleens (4); Student Control (4); Library Monitor (4); Scholastic Art Contest (2,3,4); Junior Honor Society (1,2,3); Dog Fanciers (2); Boosters' Club (2).

A girl it is a pleasure to meet.

JACK CUMMINS

When he starts things, they're as good as done.

EUGENE DALBY

NATIONAL HONOR SOCIETY

O-Book Staff (4); Register Staff, Departments Editor (4); Book Reviewers' Staff (4); Purple and White Handbook (4); Quill and Scroll (4); Monitors' Council (4); Library Monitor (4); Discussion Club (4); Regiment (1,2,3); Boosters' Club (3); Atlas Club (2).

Our capable club editor.

ROBERT DAVIS

Regiment (1,2,3,4), Second Lieutenant (4); C.O.C. (4); Road Show (4); Book Reviewers' Staff (4); Central Committee (3,4), President (4); Gentlemen's French Club (2,3,4), Secretary (2); Track (4); Speakers' Bureau (1,2,3); Boys' Junior Glee Club (1).

Small, but so is dynamite!

LEO DIAMOND

Library Monitor (4); Regiment (1,2).

A quiet boy and a student, too; Give him the credit that is due.

MARTY DI GIORGIO

Boys' O-Club (4); Library Monitor (4); Wrestling (3,4); Boys' Junior Glee Club (1,4); Swimming (1,2); Road Show (2); Orchestra (2,3).

A man who is bound to succeed.

MAXINE DOAN

Central Colleens, Chairman (4).

*The artist type is she
As attractive as can be.***KATHRYN DODDS**

Register Staff (4); Book Reviewers' Staff (4); Central Colleens (1,2,3,4); Student Control (3,4); Girls' Senior Glee Club (3,4); Le Cercle Francais (4); Library Monitor (3,4); Girls' Junior Glee Club (2,3); Costumes (2).

*Charming and fair,
But of this quite unaware.***DORA DOLGOFF**

Register Staff (4); Quill and Scroll (4); Opera (4); Forensic Society (2,3,4); Secretary (3); Le Cercle Francais (2,3,4); Secretary (3); A Cappella Choir (4); Junior A Cappella Choir (4); Girls' Junior Glee Club (3); Volleyball Team (2); Central Colleens (1).

*Brimful of fun.***IRWIN ALLAN DORINSON**

A Cappella Choir (3,4); Opera (2,4); National Music Supervisors' Convention (3); Boys' Senior Glee Club (2); Boys' Junior Glee Club (1).

*A true Centralite in every sense
of the word.***HOLLY DROSTE**

French Play, Manager (3,4); Road Show (1,2,3,4); Le Cercle Francais (2,3,4); Sergeant-at-Arms (3); Central Committee (2,3,4); Library Monitor (3); Girls' Junior Glee Club (1); President (1).

*A charming girl is Holly
Peppy and always jolly.***ELLEN DUGAN**

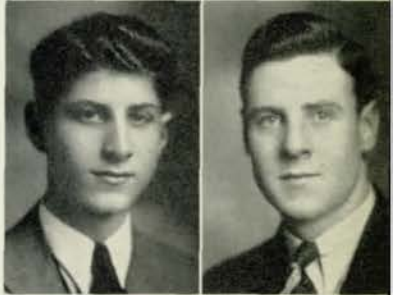
Student Control (4).

*A whiz at type.***CHARLES DUQUETTE**

Mathematics Society (4); Gentlemen's French Club (4); Boys' Senior Glee Club (4); Opera (4); Library Monitor (4); French Play (1); Character Traits Committee (1).

*Determination plus!***CHARLES DURDEN***A right good fellow.***DOX EDMONDS**

Football (1,2,3,4); Regiment (1,2,3).

*"Red" is a good organizer.***MARJORIE EDWARDS***Few possess such sparkling wit.*



ROBERT ELDRIDGE

NATIONAL HONOR SOCIETY

Regiment (1,2,3,4), Lieutenant Co' onel (4); Student Association, Vice-President (4); Road Show (2,3,4); Gentlemen's French Club (2,3,4), Vice-President (3,4); C.O.C. (4); Boys' O-Club (3,4); Engineers (4); Crack Squad (3); Junior Honor Society (1,2,3); Athletic Honor Society (3); Football (2,3); Track (3); Opera (2); French Play (2); Boys' Senior Glee Club (3); Boys' Junior Glee Club (2).

Responsible problems were meant for him, He tackles them all with vigor and vim.



RAYMOND ELLIOTT

NATIONAL HONOR SOCIETY

O-Book Staff, Business Manager (4); Register Staff (3,4), Business Manager (4); Regiment (1, 2, 3, 4), Second Lieutenant (4); C.O.C. (4); Inter-Club Council, President (4); Los Sabios (2,3,4), President (3); Student Control (3, 4); Library Monitor (4); Mathematics Society (3); Junior Honor Society (2,3); Hi-Y (3).

Business ability and a level head, Full of fun—that's a lot to be said.



RICHARD ELSON

Road Show (4); Boys' Senior Glee Club (4); Boys' Junior Glee Club (4); Los Sabios (2).

The rarest disposition you ever saw, Pleased with a rattle, tickled with a straw.



EVELYN EPSTEIN

O-Book Staff (4); Register Staff (4); Purple and White Handbook (4); Quill and Scroll (4); Book Reviewers' Staff (3,4); Lininger Travel Club (4); Central Colleens (1,4); Library Monitor (4); Student Control (3); Latin Club (3); Junior Honor Society (1).

She has loads of ambition And a bright disposition.



ELIZABETH ERICKSON

Pleasant and serene.

CARL ERNST

Student Control (4); Central High Players (4); A Cappella Choir (4); National Music Supervisors' Convention (2,3); Boys' Senior Glee Club (3,4); Boys' Junior Glee Club (1,2); Regiment (3); Road Show (1,2).

A bright personality Full of rascality.

BETTY FELLMAN

NATIONAL HONOR SOCIETY

O-Book Staff (4); Student Control (3,4); A Cappella Choir (4); Girls' Senior Glee Club (3); Girls' Junior Glee Club (2); Opera (4); Orchestra (3); Junior Honor Society (1, 2, 3); Le Cercle Francais (2); French Play (2).

"A" student and pianist.

HARRY FELLMAN

A persevering student.

FRANK FERRARO

Boys' O-Club (3,4); Football (2,3, 4); Wrestling (2,3); Regiment (1, 2,3), Sergeant (3); Orchestra (1,2); Project Committee (1).

Says little, but accomplishes much.

MARIAN FINLAYSON

Greenwich Villagers (3,4); Lininger Travel Club (3,4); Inter-Club Council (4); Le Cercle Francais (4); Art Contest (3, 4); Library Monitor (4); Central Colleens (2,3); Junior Honor Society (1).

Talented, peppy, artistic,

ROSE FISHER

NATIONAL HONOR SOCIETY

O-Book Staff (4); Register Staff (4); Purple and White Handbook (4); Quill and Scroll (4); Book Reviewers' Staff, Editor (4); Latin Club (3,4); Latin Paper, Associate Editor (4); Student Control (2,3,4); Mathematics Society (1,2,3); Library Monitor (4); Junior Honor Society (1,2,3); Latin Awards (2,3).

*A diligent worker is Rose,
Successful wherever she goes.*

LOUISE FITZSIMMONS

Sleekness and sophistication.

WILLIAM FLAX

O-Book Staff (4); Register Staff (4); Book Reviewers' Staff (4); Student Control (4); Forensic Society (4); Central Committee (2,3,4); Debate (4); Art Contest (4); Student Association, Advertising Manager (3,4); Regiment (1,2).

*Obliging in many a way,
He'll make good some day.*

PAUL FOLEY

Speakers' Bureau (3,4); Make-up (3,4).

*Here is one that is going to count
Just one of those you can't do
without.*

DOROTHY FORBES

Central Committee (2,3,4), Sergeant-at-Arms (2); Central High Players (2,3,4); Girls' Natural Science Club (3,4); Road Show (3,4); Student Control (1,2,3).

The best dancer by popular choice.

ELIZABETH FORE

NATIONAL HONOR SOCIETY

O-Book Staff, Associate Editor (4); Register Staff, Reviewers' Editor (4); Purple and White Handbook, Section Editor (4); Lininger Travel Club (3,4), President (4); Inter-Club Council, Secretary (4); Book Reviewers' Staff (3,4); Quill and Scroll (4); Le Cercle Francais (2,3,4), Vice-President (3); Library Monitor (4); French Play (2,3); Junior Honor Society (2,3); Latin Awards (3).

She dazzles with her dimples.

ELLEN FOREHEAD

Inter-Club Council (4); Library Monitor (4); G.A.A. (2,3,4), Vice-President (4); Athletic Honor Society (4); Volleyball (3,4); Basketball (3,4); Central Colleens (2,3,4); Girls' O-Club (3); Gym Club (2,3); Baseball (3); Hockey (3); Girls' Junior Glee Club (1).

A good sport and a fine friend.

ELIZABETH FOSTER

NATIONAL HONOR SOCIETY

Register Staff (4); Book Reviewers' Staff (4); Quill and Scroll (4); Speakers' Bureau (4); Monitors' Council (4); Library Monitor (4); Student Control, Secretary (4); Central Colleens (2,3,4); National Music Supervisors' Convention (3); State Music Contest (3); Junior Honor Society (2,3); Girls' Senior Glee Club (2,3); Girls' Junior Glee Club (2).

*Steadily she proceeds,
Always she succeeds.*

SYLVAN FRANKEL

A Cappella Choir (4); Student Control (4); Opera (2,4); Central High Players (4); Library Monitor (4); Boys' Senior Glee Club (2,3); Boys' Junior Glee Club (1); Road Show (2).

*A little nonsense now and then
Is relished by the best of men.*

MAN FREDMAN

Der Deutsche Verein (3); Regiment (1,2).

*His character brings him many
friends.*





GILBERT FREIDEN

Regiment (1, 2, 3, 4), Second Lieutenant (4); C. O. C. (4); Library Monitor (4); Stage Crew (1).

Life was made to be enjoyed.



PAUL FRUMKIN

O-Book Staff, Associate Editor (4); Register Staff (4); Books Reviewers' Staff (4); Debate Squad (2,4); Debate Team (3); Library Monitor (4); Forensic Society (2,3,4), Sergeant-at-Arms (3), Vice-President (4); Discussion Club (4); Der Deutsche Verein (3); Regiment (1, 2); Quill and Scroll (4).

*A studious, independent chap,
Some day he'll be on the map.*



MARY FUQUA

Los Sabios (4); Library Monitor (4); Swimming (1,4); G.A.A. (1, 2,3); Baseball (1,3); Hockey (1,3); Basketball (1,3).

Likable and ever-ready with a smile.



JACK GARDNER

A Cappella Choir (4); Regiment (1, 2,4); Opera (2); Boys' Junior Glee Club (2).

*Always joking and making fun
His pranks and jollity are never done.*



BEN GERSHATER

Register Staff (4); Quill and Scroll (4).

Nifty with his pen.

JACK GERVE

Regiment (1,2,3,4); Los Sabios (3); Boys' Junior Glee Club (2); Basketball (1,2).

He will shine among men.

VIRGINIA GIBSON

A Cappella Choir (3, 4); Central High Players (2,3,4); Road Show (1, 2, 3, 4); Girls' Natural Science Club (3); Opera (1,2,3); Girls' Senior Glee Club (2); State Music Contest (2); Girls' Junior Glee Club (1).

*With her talent in song and dance,
this girl will go far.*

RHODA GILINSKY

Girls' Junior Glee Club (1, 2, 4), Girls' O-Club (2); Basketball (2, 4); Baseball (1,2).

*Rhoda is one with whom you can
always have fun.*

JUNE GOETHE

Register Staff (4); Book Reviewers' Staff (4); State Music Contest (4); A Cappella Choir (4); Library Monitor (4); Orchestra for Senior Play, Road Show, Opera (1,2,3,4); Student Control (3); Swimming (2,3,4).

How she can tickle those keys!

HERMAN GOLDSTEIN

Regiment (1, 2, 3, 4), Captain and Ordnance (4); C.O.C. (4); Boys' O-Club (4); Gentlemen's French Club (4); Football (3,4); Tennis (4); Road Show (3,4); Library Monitor (4); Crack Squad (3); Mathematics Society (3); Engineers (2); Forensic Society (1, 2), Sergeant-at-Arms (1); Project Committee (1); Baseball (1); French Play (4).

*A good athlete we all know and
one who well deserves his "O."*

FAYE GOLDWARE

NATIONAL HONOR SOCIETY

O-Book Staff (4); Register Staff (3, 4); Purple and White Handbook, Section Editor (4); Latin Paper (3, 4); News Editor (3); Managing Editor (4); Quill and Scroll (4); Citizenship Contest (4); Book Reviewers' Staff (3, 4); Student Control (3, 4); Mathematics Society (2, 3, 4), Chairman of Program Committee (3, 4); Latin Club (2, 3, 4), President (3); Inter-Club Council (3); Speakers' Bureau (2, 3); Junior Honor Society (1, 2, 3); Central Colleens (1, 2); Girls' Natural Science Club (2); Forensic Society (1, 2), Secretary (1); Sergeant-at-Arms (2); Debate (1).

A good student, well-liked, is Faye, Who has a knack for making "A."

ROBERT GOUDY

NATIONAL HONOR SOCIETY

Student Control (3, 4); Latin Club (3, 4); Boosters' Club (3, 4); Gentlemen's French Club (4); Library Monitor (4); Costume Master, Road Show and Opera (4); Boys' Senior Glee Club (1); Boys' Junior Glee Club, Vice-President (3).

He keeps Wrigley's business going.

JANET GRAETZ

A Cappella Choir (3, 4); Opera (3, 4); Student Control (4); National Music Supervisors' Convention (1, 3); Register Staff, Advertising Solicitor (2); Girls' Senior Glee Club (1, 2); State Music Contest (2, 4); Girls' Junior Glee Club (1).

A willing worker with a winning way.

FRANCES GRAHAM

"Daddy Long-Legs" (4); Girls' Senior Glee Club (3); Girls' Junior Glee Club (1, 2); Central Colleens (1, 2); Costumes (2).

Quiet and very likable.

TEDDY GUENTHER

Student Control (3, 4); Der Deutsche Verein (3, 4), Vice-President (3), President (4); Inter-Club Council (4); Discussion Club (4); Biology Round Table (3, 4); Library Monitor (4); Atlas Club (1).

For Teddy we all agree He's as good-natured as can be.

SUE HALL

Central High Players (4); Boosters' Club (4); Central Colleens (4); Girls' Senior Glee Club (3); Girls' Junior Glee Club (2).

Lovable despite her nonsense.

MAXINE HAMMACK

Library Monitor (4).

A friend whose presence will be missed.

ROSELLE HANDLER

Los Sabios (3, 4).

She's quiet, but she has a miraculous way of winning friends.

FLORA MARIE HANDLEY

NATIONAL HONOR SOCIETY

O-Book Staff (4); Register Staff (4); Purple and White Handbook (4); Quill and Scroll (4); Book Reviewers' Staff (3, 4); Library Monitor (4); Central Colleens (1, 3, 4), Chairman (4); Mathematics Society (3, 4); Titians (1, 3, 4), Head Usher (4); Student Control (3); Junior Honor Society (1, 3).

Able and active with brains and poise.

She does a lot without much noise.

MARY ANN HANLEY

Titians (1, 2, 3, 4); Greenwich Villagers (3, 4); Art Contest (3, 4); Student Control (2); Girls' Junior Glee Club (1, 2); Road Show (2).

"Mercy Mary Ann."



**WILLIAM HILL**

Orchestra (2, 3, 4), President (4); State Music Contest (4); A Cappella Choir (4); Road Show (3,4); Der Deutsche Verein (3,4), Sergeant-at-Arms (4); Central High Players (1,2,3,4); Boys' Junior Glee Club, Vice-President (3).

Wouldn't you like to hear him play "Goofus" on his violin?

**MARJORIE HILLER**

Book Reviewers' Staff (4); Library Monitor (4); Central Colleens (1).

Cherry, chummy Mickey.

**BETTY HINCHEY**

Library Monitor (4); Student Control (3); Boosters' Club (3); Central Colleens (1,2,3); Girls' Junior Glee Club (1,2).

She accomplishes her work with a winning smile.

**LOUISE HOEFENER**

Der Deutsche Verein (3,4), Sergeant-at-Arms (3); Central Colleens (1,3,4); Make-up (4); Library Monitor (4); Swimming (2); Girls' Junior Glee Club (1).

Sweet and demure.

**ELBERT HOISINGTON**

O-Book Staff (4); Biology Round Table (2,3,4), Secretary (4); A Cappella Choir (3,4); Boys' Senior Glee Club (2,3); Boys' Junior Glee Club (1); Opera (3,4), Prompter (4); Library Monitor (4); Southwest Music Supervisors' Convention (4); North Central Music Supervisors' Convention (4); Junior Honor Society (2).

The best of "Scouts" is he.

JAMES HARRIS

O-Book Staff (4); Register Staff, Advertising Assistant (4); Boosters' Club (4); Football (3,4); Wrestling (3,4); Forensic Society (2,3); Debate (2,3); Athletic Manager (3); Speakers' Bureau (2,3), President (3); Golf (2); Boys' Junior Glee Club (2); Regiment (1,2); Basketball (1).

Mr. President, "Mr. Harris speaking—"

PEGGY HEALD**NATIONAL HONOR SOCIETY**

O-Book Staff, Activities Editor (4); Register Staff (4); Book Reviewers' Staff (4); Quill and Scroll (4); Mathematics Society (2,3,4), Sergeant-at-Arms (4); Central Colleens (2, 3, 4), Chairman (3), Treasurer (4); Student Control (3,4); A Cappella Choir (4); Girls' Senior Glee Club (3); Girls' Junior Glee Club (2); Library Monitor (4); Junior Honor Society (1, 2, 3); Girl Reserves (3); Girls' Natural Science Club (2).

If there's something to be done, Peggy surely is the one.

PRISCILLA HERRICK

Central High Players (2, 3, 4); "Daddy Long-Legs" (4); Central Colleens (2,3,4); Student Control (2,3); Girls' Senior Glee Club (2, 3), Vice-President (3); Girls' Junior Glee Club (1,2), Secretary (1); Road Show (2,3); Costumes (2,3).

Good looks and pleasing ways.

RUTH HERRON**NATIONAL HONOR SOCIETY**

O-Book Staff (4); Mathematics Society (2,3,4), President (4); Latin Club (2,3,4), Secretary (4); Student Control (2, 3, 4); Central Colleens (4); Library Monitor (4); Citizenship Contest (4); Latin Awards (2,3).

A fine combination of modesty and industry.

ALMIRA HESS

Greenwich Villagers (2,3,4); Central High Players (4); Central Colleens (2,3,4).

She goes about her work in a quiet business-like way.

ELISABETH HOLDEN

Der Deutsche Verein (1,2); Central
Colleens (1).

A maiden demure and yet a coquette.

ROBERT HOMANN

O-Book Staff (4); Register Staff
(4); Regiment (1, 2, 3, 4); Second
Lieutenant (4); Gentlemen's French
Club (3,4); Junior Honor Society
(1,3); Speakers' Bureau (2).

A versatile, brilliant fellow.

CHARLES HOREJS

NATIONAL HONOR SOCIETY

O-Book Staff, Proof Reader (4);
Register Staff, Proof Reader (4);
Purple and White Handbook (4);
Quill and Scroll (4); A Cappella
Choir (4); Opera (4); Latin Club
(3,4); Treasurer (4); Library Mon-
itor (4); Declamatory Contest (3);
Forensic Society (3); Boys' Senior
Glee Club (3); Boys' Junior Glee
Club (2); Speakers' Bureau (2,3);
Junior Honor Society (1,2).

*He sings, writes, and does many
things well;
In fact, so many there's not room
to tell.*

MARIAN HORN

Student Control (4); A Cappella
Choir (4); Opera (4); Girls' Senior
Glee Club (2,3); Girls' Junior Glee
Club (1); Central Colleens (3,4);
National Music Supervisors' Con-
vention (2).

As cool and blonde as Garbo.

JULIUS HORNSTEIN

Regiment (1,2,3,4); First Lieutenant
(4); Orchestra (1,2,3,4); Vice-Pres-
ident (4); Der Deutsche Verein (2,
3,4); C.O.C. (4); Road Show (2,3,4).

May his name flash on Broadway!

MARY JANE HUNT

Girls' Junior Glee Club (1,4);
Swimming (3); Road Show (1);
Central Colleens (1).

Perpetually peppy.

LORING HUNZIKER

Regiment (1,2,3,4); Second Lieut-
enant (4); Student Control, Presi-
dent (4).

*His ambition and perseverance will
lead him to success.*

FLORENCE INDA

Girls' Junior Glee Club (4).

*When she talks, her conversation
Brings dejected souls elation.*

ANTHONY R. INSERRA

Basketball (2); Regiment (1,2).

*Aspiring to be an engineer,
We'll hear of him in a later year.*

OLIVE JACKSON

*With stately carriage and graceful
poise
Always liked by girls and boys.*





MARGARET JACOBSEN

Make-up (4); Girls' Junior Glee Club (3).

Beautiful to see.



JOHN JENKINS

Regiment (1,2,3,4), Second Lieutenant and Quartermaster (4); C.O.C. (4); Road Show (4); Engineers (3); O-Club (2); Swimming (1,2).

We'll all miss Johnnie's genial good humor.



FRED JENNESS

A Cappella Choir (4); Regiment (3, 4); Road Show (3,4); Orchestra (3, 4); Boys' Junior Glee Club (3); Wrestling (3).

Always on the spot.



MARTIN JETTER

Athletic Manager (3,4).

Every inch of him a good fellow.



ELINOR JOHNSON

Central Committee (2,3,4); Central Colleens (1,3,4); Le Cercle Francais (4); Library Monitor (4); Tennis (4); Student Control (2,3); Latin Club (3); Swimming (2); Project Committee (1); Girls' Junior Glee Club (1).

Her manner is charming and sweet, With a sense of humor that can't be beat.

HELEN JORGENSEN

G.A.A. (4); Central Colleens (4); Library Monitor (4); Art Contest (2); Athletic Exhibition (2).

A dandy girl who makes the most of her athletic abilities.

DAVID KATSKEE

Register Staff (4); Quill and Scroll (4); Der Deutsche Verein (2,3), Sergeant-at-Arms (3); Boys' Junior Glee Club (3).

A wit in his classes and a journalist.

BETTY KAVAN

Student Control (4); A Cappella Choir (4); Los Sabios (4); Greenwich Villagers (3,4); Lininger Travel Club (2,3,4); Central Colleens (1, 2, 3, 4); Library Monitor (4); Girls' Junior Glee Club (2); Character Traits Committee (1); Girl Reserves (1,2,3,4).

Pep, ambition, and fun. She's beyond comparison.

ANTOINETTE KAY

Girls' Natural Science Club (3); Swimming (2); Opera (1).

Underneath a quiet smile Here's a friend truly worth while.

HARRIET KELLY

Le Cercle Francais (3,4), Sergeant-at-Arms (4); Central Committee (3, 4); Lininger Travel Club (4); Speakers' Bureau (2,3), Sergeant-at-Arms (2).

So good-looking — oh, my gracious! With a laugh that's really spacious.

RICHARD KENT

Regiment (1,2,3,4), Captain (4); C. O.C., Treasurer (4); Road Show (3,4); Crack Squad (3); Student Control (3); Los Sabios (3); Mathematics Society (2); Purple Legion (2); Speakers' Bureau (1,2); Central High Players (1,2); Junior Honor Society (1).

*Happy-go-lucky Peter Rabbit
To reach the top has been his habit.*

OLIVER KERR

O-Club (3,4); Tennis (4); Baseball (2,4); Wrestling (3); Latin Club (4).

*When he smiles and rolls his eyes.
My, oh, my, he takes the prize.*

WILMA KINMAN

Central High Players (4); Production (4).

She has the cutest ways.

JACK KINNARD

Regiment (1, 2, 3, 4), Second Lieutenant and Quartermaster (4); C.O. C. (4).

*His subtle wit enlivens many a
classroom.*

MORRIS KOOM

Library Monitor (4); Forensic Society (4); Los Sabios (4); Regiment (1,2).

*Steadfast and faithful, Morrie's a
hit,
He's always willing to do his bit.*

FRANCES KORT

Book Reviewers' Club (4); Central Colleens (4).

*She talks nice, she acts nice, she
IS nice.*

HAROLD KORT

Library Monitor (4); Discussion Club (4); Debate Squad (3,4); Forensic Society (3,4); Regiment (1,2,3).

*Eyes of blue, curly hair,
Spreading sunshine everywhere.*

DONALD KUGLER

A Cappella Choir (3,4); Opera (3, 4); National Music Supervisors' Convention (3,4); Mathematics Society (3,4); Boys' Senior Glee Club (2); Boys' Junior Glee Club (1); Library Monitor (4); Atlas Club (1).

*He has the ability and the
perseverance.*

ANGELYN KVETENSKY

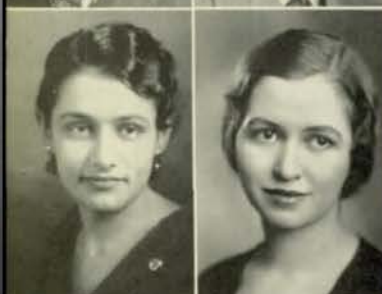
A Cappella Choir (3,4); Linger Travel Club (2,3,4); Library Monitor (4); Girls' Senior Glee Club (2); Girls' Junior Glee Club (2); Chorus (1); Central Colleens (1).

*A good steady girl with ability to
get what she goes after.*

JACK LAMMERS

*We may say of this fellow Jack
That in goodly qualities he doesn't
lack.*





CYRIL LEON

Library Monitor (3); Girls' Natural Science Club (1); Central Colleen (1).

Jolly, witty, and full of fun.

HARVEY LEON

NATIONAL HONOR SOCIETY

Debate Team (4); Squad (2,3); Library Monitor (4); Forensic Society (3,4); Latin Club (3); Junior Honor Society (1,2).

He can talk day in and day out, But he always knows what he's talking about.

HARRY LERNER

Register Staff, Proof Reader (4); Quill and Scroll (4); Latin Club (4); Boys' Senior Glee Club (4); Boys' Junior Glee Club, Treasurer (3); Track (3).

Quiet, but not shy, He's bound to satisfy.

LILLIE LERNER

Register Staff (4); Quill and Scroll (4); Mathematics Society (4); Boosters' Club (4); Library Monitor (4); Girls' Junior Glee Club (4).

Small packages are always best and She's even smaller than the rest.

ROBERT LEVINE

Regiment (1,2,3,4), First Lieutenant (4); C.O.C. (4); Engineers (3,4); Student Association, President (4); Swimming (4); Speakers' Bureau (3); Track (1).

He has accomplished things worth while, And always done them with a smile.

BEN LEWIS

Football (1).

Central's prize gum-chewer is everybody's friend.

LOIS LONERGAN

Student Control (4); A Cappella Choir (4); Girls' Senior Glee Club (3); Girls' Junior Glee Club (2); Road Show (1,2,3,4); Le Cercle Francais (4); French Play (4); Central High Players (2); Opera (2).

She has vitality, amiability, and personality.

ROBERT LOVGREN

NATIONAL HONOR SOCIETY

O-Book Staff (4); Student Control (4); Library Monitor (4); Regiment (1,2,3); Baseball (2,3); Basketball (2,3); Junior Honor Society (1); Tennis (1); Golf (1).

Intelligent and sincere.

KATHLEEN McCAFFREY

A Cappella Choir (4); Le Cercle Francais (2,3,4), Treasurer (4); French Play (4); "Daddy Long-Legs" (4); Liminger Travel Club (2,3,4); Central Colleen (2,4); Girls' Senior Glee Club, Vice-President (3); Speakers' Bureau (2,3); Sergeant-at-Arms (3); Junior A Cappella Choir (3); Central High Players (2,3); Opera (3); Mathematics Society (2); Girls' Junior Glee Club, President (2); Senior Play (2); French Style Show (2); Color Day Committee (2); Road Show (2,4).

A friend to every lad and lass A credit to the Senior Class.

GEORGIA McCAGUE

NATIONAL HONOR SOCIETY

O-Book Staff (4); Le Cercle Francais (2,3,4), Vice-President (4); Central Committee (3,4); Greenwich Villagers (2,3,4); Speakers' Bureau (1,2); Junior Honor Society (1,2).

A modern girl with great big eyes And personality twice her size.

JACK McCANN

Football (1,2,3,4), Captain (4);
Boys' O-Club (3,4), Treasurer (4);
Track (3,4); Swimming (1,2).

Athletic ability makes Jack a Central star.

SAM McCLENEGHAN

Regiment (1,2,3,4), Major (4); C. O. C., Vice-President (4); Crack Squad (3,4); Engineers (2,3,4); Road Show (2,3,4); Football (1,2,3,4); Student Control (3); Library Monitor (4); Speakers' Bureau (3); Track (1,2,3); Biology Round Table (1).

*Leader of Crack Squad, head of engineers.
Major Sam, "whatta man," everywhere appears.*

LOIS McFAYDEN

Le Cerele Francais (3,4).

*She's very artistic, as everyone knows,
And dresses in style wherever she goes.*

KENNY McGAFFIN

Track (2,3); Stage Crew (2,3);
Golf (1,2); Regiment (1,2).

*Kenny can draw and he can paint.
About this boy there's no complaint.*

DOROTHY McNAB

Road Show (3,4); Student Control (3); Central Colleens (2); "The Patsy" (2).

Lithe and graceful on her dancing toes.

JULIAN W. McPHERSON

Boys' Junior Glee Club (4); Road Show (2); Boosters' Club (2).

A marvelous pianist.

MARTHA MAIER

A Cappella Choir (3,4); Student Control (3); Opera (3); Central Colleens (2,3); Girls' Senior Glee Club (2); Girls' Junior Glee Club (2); National Music Supervisors' Convention (2).

With many companions who adore her ways.

JACK MARTIN

Mathematics Society (3,4).

His dignity is very impressing.

COLEEN MASTERS

Greenwich Villagers (3,4), Treasurer (4); G.A.A. (4); Baseball (1,3,4); Tennis (1,2,3,4); Golf (1,2,3,4); City Tournament (3); Basketball (1,4); Art Contest (3,4); Swimming (1,3); Volleyball (1,3,4), Captain (1); Student Control (3); Gym Club (2,3); Gym Pageant (2).

Athletics and art keep our Coleen busy.

JANE MASTERS**NATIONAL HONOR SOCIETY**

O-Book Staff (3,4); Los Sabios, Sergeant-at-Arms (4); Central Colleens (1,2,3,4); Library Monitor (4); Tennis (4); Register Staff (3); Student Control (3); Girls' Senior Glee Club (2,3); Girls' Junior Glee Club (1); Hockey (2,3), Captain (2); Junior Honor Society (1,2,3); Quill and Scroll (3); Opera (2); Project Committee (1).

Her ability to write is surpassed only by her wit.





CALVIN MAXWELL

Register Staff (4); Student Control (4); Opera (3,4); A Cappella Choir (3,4); Chorus (3,4); Latin Club (3,4); Treasurer (3); Sergeant-at-Arms (4); Costumes, "Daddy Long-Legs" (4); "The Rear Car" (4).

He's happy-go-lucky in both work and play.



LUCILLE MAYER

Junior A Cappella Choir (4); Girls' Senior Glee Club (3); Girls' Junior Glee Club (2); Central High Players (3,4); Central Colleens (3,4).

*How much we will miss
Her dependability and helpfulness.*



WILLIAM METZGER

Road Show, Stage Manager (4); Student Control (4); Los Sabios (4); Opera, Property Manager (3); Stage Manager (4); "Daddy Long-Legs" (4); Central High Players (3,4); Vice-President (4); "The Patsy" (3); Stage Crew (3,4); Senior Play, Stage Manager (3); "The Rear Car" (4).

Always at ease on the stage.



HENRIETTA MEYER

Student Control (4); Central Colleens (4); Swimming (4); Girls' Senior Glee Club (3,4); Girls' Junior Glee Club (1,2); Make-up (2).

*Laughing eyes, winning smile,
A pretty girl with lots of style.*



JOHN MILLER

O-Book Staff (4); Register Staff (4); Purple and White Handbook (4); Quill and Scroll (4); Regiment (1,2,3,4); Sergeant (4); Library Monitor (4); Book Reviewers' Staff (3,4); Der Deutsche Verein (1,2,3,4); Sergeant-at-Arms (3).

*He's known for his gift of gab,
When he's around no day is drab.*

NEIL MILLER

*Good company and pleasant to meet
You'll find Neil hard to beat.*

MAURINE MOODY

Mathematics Society (3,4); Library Monitor (4); Girls' Natural Science Club (2); Central High Players (4).

*No change in demeanor, ever serene,
A smile for each of us, that's Maurine.*

MARGARET MOORE

Central Committee (4); Le Cerele Francais (2,3,4); Road Show (3,4); Library Monitor (4); Student Control (3); French Play (2).

*Our "li'l lamb's lettuce" so dainty
and sweet.*

MARY MOORE

Library Monitor (3,4); Tennis (3); Los Sabios (2).

Always ready with a smile.

CYNTHIA MORTON

A Cappella Choir (4); Central Colleens (2,3,4); Sergeant-at-Arms (4); Library Monitor (4); Student Control (2,3); Girls' Senior Glee Club (2,3); Girls' Junior Glee Club (1); Atlas Club (2).

*Central is losing a capable and
brilliant miss.*

ELBERT MOSHIER

Regiment (1,2,3,4); Boys' Senior Glee Club (2,3); Boys' Junior Glee Club (1); Opera (1,2).

Better late than never.

CLAYTON MOSSMAN

A Cappella Choir (4); Central High Players (3,4); "Daddy Long-Legs" (3,4); "The Patsy" (3); Boys' Senior Glee Club (3); Boys' Junior Glee Club (1,2); Der Deutsche Verein (3); Boosters' Club (2,3); Student Control (2); Atlas Club (1,2); "The Rear Car" (4).

A flash of wit and a vivid smile.

JOHN MOUCKA

NATIONAL HONOR SOCIETY

O-Book Staff, Circulation Manager (4); Regiment (1,2,3,4), First Lieutenant and Adjutant (4); C. O. C. (4); Engineers (3,4); Road Show (4); Opera (3); Boys' Senior Glee Club (3); Boys' Junior Glee Club (2); Library Monitor (4); Junior Honor Society (2); Basketball (2); Football (2); Atlas Club (2); Hi-Y (4).

Capable, likable and lots of fun.

ROBERT MOWBRAY

Regiment (1, 2, 3, 4), Second Lieutenant (4); C.O.C. (4); Road Show (4); Opera (4); Boys' Senior Glee Club (1,2,3,4); Mathematics Society (3,4).

Always progressing.

JEANNE MULLIS

NATIONAL HONOR SOCIETY

O-Book Staff (4); Latin Club (3,4), President (4); Latin Paper, Circulation Manager (4); Girls' Natural Science Club (2,3,4), Treasurer (4); Inter-Club Council (2, 4); Junior Honor Society (1,2,3); Latin Awards (2); Girls' Senior Glee Club (2); Girls' Junior Glee Club (1).

She takes two things seriously, her studies and her friends.

BERNICE MYERS

A Cappella Choir (3); Central Colleens (2); Girls' Senior Glee Club (2); Girls' Junior Glee Club (2); Swimming (1).

A typical Central girl.

LEONARD NATHAN

NATIONAL HONOR SOCIETY

O-Book Staff (4); Register Staff, Advertising Manager, Editorial Writer (4); Purple and White Handbook (4); Latin Paper, Associate Editor (4); Book Reviewers' Staff (4); Student Control (4); Discussion Club (4); Quill and Scroll (4); Library Monitor (4); Regiment (1,2); Junior Honor Society (1).

A fellow who knows how to do things and who does them.

ELEANOR NEEDHAM

*For cuteness a winner,
For flirting a sinner.*

ROY NELSON

Orchestra (1, 2, 3, 4); Boys' Senior Glee Club (2,3); National Music Supervisors' Convention (2).

*His good humor, always the same,
May some day bring him fame.*

VINCENT NELSON

Regiment (1,2,3,4), First Lieutenant (4); C.O.C. (4).

A better friend is hard to find.





DELOIS NICHOLS

Art Contest (4).
Artistically inclined.

GEORGE F. OSTEN

Regiment (1,2,3,4), Sergeant (4);
Discussion Club (4); Der Deutsche
Verein (2,3).

*Witty, laughing, always gay.
We surely wish that he would stay.*



DEXTER NYGAARD

*Never too busy to do things for
others.*

PAULINE PARIS

Opera, Prompter (4); Girls' Senior
Glee Club (4); Girls' Junior Glee
Club (2,3); Chorus (3).

*We are glad that this pretty miss
came to Central.*



HARRIETT O'LEARY

Student Control (4); Central High
Players (3,4); Central Colleens
(4); Girls' Junior Glee Club (1,2).

*A merry maiden with a winning
smile.*

BETTY PATTERSON

Central Committee (4); Central
High Players (2,3,4); Library Mon-
itor (4); Costumes (3); Student
Control (2).

*Cute, clever, full of fun,
Known and loved by everyone.*



MARGARET ORTMAN

Der Deutsche Verein (4).

A girl with loads of likable qualities.

JAMES PEERY

Regiment (2,3).

*He seems quiet but he's not al-
ways so.*



GERTRUDE ORUCH

NATIONAL HONOR SOCIETY

Student Control (3,4), Secretary
(4); A Cappella Choir (4); For-
nsic Society (1,2,3,4); Central Col-
leens (2,3,4), Chairman (4); Mathe-
matics Society (3,4); Opera (4);
Girls' Senior Glee Club (3); Girls'
Junior Glee Club (1,2); Junior
Honor Society (1,2).

Ever willing to please.

MARIAN PEHLE

Register Staff (4); Los Sabios (2,
3,4), Sergeant-at-Arms (4); Central
Colleens (3,4); Central High Play-
ers (4); Book Reviewers' Staff (4);
Opera, Make-up Mistress (4); Road
Show (4); "Daddy Long-Legs" (4);
Library Monitor (4); Make-up (4);
Junior Honor Society (3); Girls'
Senior Glee Club (2,3); Girls' Jun-
ior Glee Club (1).

*Happy-go-lucky Marian, always
Writing and reciting silly rhymes.*

ROSELLA PERLIS

NATIONAL HONOR SOCIETY

Latin Club (4); Latin Paper, Feature Editor (4); Girls' Natural Science Club (2,3,4); Library Monitor (4); Forensic Society (3,4); Girls' Senior Glee Club (4); Girls' Junior Glee Club (3).

Gifted in writing, chic and demure.

BERNICE PETERSEN

Register Staff (4); Book Reviewers' Staff (4); G. A. A. (2, 3, 4); Latin Club (4); Boosters' Club (3, 4); Swimming (4); Debate (1).

*She's very hard to learn to know
But when you do you like her so.*

CHARLOTTE PETERSON

Register Staff (4); Greenwich Villagers (2,3,4); Vice-President (4); Central High Players (4); Tennis (4); Basketball (4); Art Contest (3).

*There's depth and dignity to
Charlotte.*

WALTER PETERSON

Football (3,4); Wrestling (4); Orchestra (1).

*Business before pleasure and then
lots of pleasure.*

ELIZABETH PHILLIPS

Central Colleens (1,2,3); Orchestra (1,2).

A girl who's hard to beat.

ELLEN JANE PHILLIPS

Orchestra (1,2,3,4); Library Monitor (4).

*She'll never fail to get what she's
after.*

MERLYN PHILLIPS

Swimming (4); Girl Reserves (3,4).

*A pretty, delightful blond
Of whom everybody's foud.*

PAUL PHILLIPS

Boys' O-Club (1,2,3,4); Track (1, 2,3,4); Football (4); Athletic Honor Society (4); Regiment (1,2).

*A dusky flash is our boy Paul
He breaks the tape ahead of all.*

VICTOR PIGMAN

Regiment (1,2,3,4); Road Show (4); Orchestra (4); Atlas Club (1,2,3,4); Opera (1, 2); Boys' Junior Glee Club (1).

*A hard worker at everything he
undertakes.*

MARVIN PIZER

Regiment (1,2,3,4); Second Lieutenant (4); Road Show, Assistant Manager (4); C.O.C. (4); Library Monitor (4); Opera (3); Central High Players (1,2); Speakers' Bureau (1,2); A Cappella Choir (3); Boys' Senior Glee Club (2); Forensic Society (1,2).

Dignity in his bearing.





CLARENCE PROHASKA

Regiment (1,2).

A good fellow to everyone.



DAVID QUICK

Regiment (2,3,4); Baseball (3,4);
Swimming (3,4); Orchestra (4);
Der Deutsche Verein (3).

*Onward, go onward, oh time in thy
flight,
Make the bell ring before I recite.*



ELEANOR QUICK

Central Colleens (1, 2, 3, 4), Vice-
President (4); Central Committee
(2,3,4); Lininger Travel Club (3,
4); Library Monitor (4); Junior
Honor Society (1,3); Girls' Junior
Glee Club (2); Project Committee
(1).

*She can't keep the "Wolfe" from
her door. Wuf! Wuf!*



LUCY LEE RANDOL

Library Monitor (4); Gym Club (3).

"Kewpie" isn't that enough?



GEORGE RASMUSSEN

Regiment (1, 2, 3, 4), Captain (4);
Gentlemen's French Club (2, 3, 4),
Secretary (4); C.O.C. (4); Boys'
O.Club (4); Road Show (4); Li-
brary Monitor (4); French Play (1,
2,4); Golf (3,4); Hi-Y (1,2,3,4).

*Snappy car and snappy clothes,
He's liked wherever he goes.*

ERMAGRACE REILLY

NATIONAL HONOR SOCIETY

O-Book Staff, Editor-in-Chief (4);
Register Staff (4); Book Reviewers'
Staff (4); Lininger Travel Club (3,
4); Central Colleens (3,4), Chair-
man (4); Latin Club (3,4), Secre-
tary (3), Vice-President (4); Quill
and Scroll (4); Student Control (3,
4); Library Monitor (4); Junior
Honor Society (1,2,3); Girls' Natu-
ral Science Club (2,3), President
(3); Mathematics Society (2);
Make-up (2); Debate Team (3).

*A delightful girl whose ability
proves that one can be beautiful and
not dumb.*

WILLIAM REIMUND

*Quiet his thoughts, but ever worth
while.*

ROSALIE REINHARDT

Girls' Senior Glee Club (2,3,4); Li-
brary Monitor (4); Los Sabios (3);
Road Show (2); Girls' Junior Glee
Club (1).

*One cute girl we all agree,
A pretty brunette is Rosalie.*

MAX RESNICK

NATIONAL HONOR SOCIETY

O-Book Staff (4); Register Staff
(4); Purple and White Handbook
(4); Quill and Scroll (4); Book Re-
viewers' Staff (3,4), Vice-President
(4); Inter-Club Council (4); Mon-
itors' Council (4); Library Monitor
(4); Citizenship Contest (4); Dis-
cussion Club, President (4); Mathe-
matics Society (3,4); Junior Honor
Society (2,3); Regiment (1,2).

*Originality and determination
Are an unusual combination.*

ELLEN RICHARDSON

Girls' Junior Glee Club (3); Chorus
(1,2); Baseball (1,2).

*Quiet and reserved she may appear,
But pranks and mischief are ever
near.*

BEN RIMERMAN

Swimming (1,2,3,4), Captain (4);
Boys' O-Club (2,3,4); Football (4);
Athletic Manager (4); Road Show
(4); Stage Crew (4); Baseball (3);
Regiment (1,2,3).

*Captain and star of the Purple
Ducks.*

FLORAMAY RIMERMAN

Swimming (3,4); Swimming Page-
ant (3); Library Monitor (4); G.
A.A. (3); Basketball (3); Tennis
(3); Baseball (3); Volleyball (3);
Gym Club (3); Central Colleens (2,
3); Junior Honor Society (1).

*She's quiet of nature, and she
dresses in style.*

LEE ROBERTS

Stage Crew (1,2); Regiment (1,2);
Chorus (1,2); Football (1).

*A friend to all is Lee
And as jolly as can be.*

FRANCES ROBERTSON

NATIONAL HONOR SOCIETY

O-Book Staff (3,4); Register Staff
(3,4), Exchange Manager (4); Pur-
ple and White Handbook (4); Book
Reviewers' Staff (3,4); Student
Control (4); Le Cercle Francais
(4); Library Monitor (3,4); Quill
and Scroll (3,4); Girls' Senior Glee
Club (2); Girls' Junior Glee Club
(1); Central Colleens (2).

*There are many who really wish
To be the friend of this little miss.*

ALLEN ROESSIG

Stage Crew (2,3).

He has won a host of friends.

LILLIAN ROLLF

Central High Players (3,4); Library
Monitor (4); Student Control (2).

*Writing is her recreation,
Some day, maybe, her occupation.*

RUTH ROMM

Library Monitor (4); Central Col-
leens (1,2).

Her hair is the envy of all her sex.

HUDSON ROSE

Regiment (1,2,3,4), Captain and
Commissary (4); Register Staff, Cir-
culation Manager (4); O-Book Staff
(4); C.O.C. (4); Student Control
(3,4); Road Show (4); Library
Monitor (4); Mathematics Society
(3,4); Engineers (3); Biology
Round Table (2); Junior Honor
Society (2); Debate (1); Quill and
Scroll (4).

*Tall and handsome, he's the man
Who's always ready to do what he
can.*

EDWARD ROSENBAUM

NATIONAL HONOR SOCIETY

O-Book Staff (4); Register Staff
(4); Purple and White Handbook
(4); Forensic Society (3,4), Vice-
President (3), President (4); Dis-
cussion Club (4); Quill and Scroll
(4); Library Monitor (4); Student
Control (3); Reviewers' Club (3);
Debate (3,4); Junior Honor Society
(1,2,3); Regiment (1,2).

*It's not hard to tell
That he does all things well.*

HARRIET ROSENFELD

NATIONAL HONOR SOCIETY

O-Book Staff, Honors Editor (4);
Register Staff (4); Latin Paper,
Managing Editor (4); Latin Club
(4); Book Reviewers' Staff (4);
Linger Travel Club (4); Student
Control (3,4); Mathematics Society
(1,2,3); Central Colleens (1,2,3);
Forensic Society (2,3); Junior Hon-
or Society (1,2,3); Latin Award (2).

*Her ability we commend and
She's grand as a friend.*





ETHEL MAE SACHSE

Library Monitor (4).

Completely nice.



DAVID SAXE

NATIONAL HONOR SOCIETY

Forensic Society (1, 2, 3, 4), Treasurer (2), President (3, 4); Latin Club (3, 4), President (4); Discussion Club (4), President (4); Debate (1, 2, 3, 4); O-Book Staff (4); Inter-Club Council (3, 4); Library Monitor (4); Speakers' Bureau (2, 3).

*A debater of might,
Who's always right.*



CHARLES SCANLON

Boys' O-Club (3, 4), President (4); Football (3, 4); Baseball (1, 3, 4); Athletic Manager (3, 4); Regiment (1, 2, 3).

*"Chuck" is known by all
For his ability in football.*



WILLIAM SCHNEIDERWIND

Regiment (1, 2, 3, 4), Corporal (4); Road Show (4); Orchestra (1, 2, 3, 4); Basketball (3, 4); Chorus (2).

A little fellow with a big name.



THEODORE SCHROEDER

NATIONAL HONOR SOCIETY

Library Monitor (4); Junior Honor Society (3); Der Deutsche Verein (3); Boosters' Club (2).

*One of our honor students of
whom we are all proud.*

EDNA SEE

Greenwich Villagers (3, 4), Secretary (4); Girls' Senior Glee Club (4); Girls' Junior Glee Club, President (4); Student Control (4); Inter-Club Council (4); Opera (4); Orchestra (4); Golf (2).

*Linger awhile,
There is charm in her smile.*

LOUISE SENEZ

NATIONAL HONOR SOCIETY

O-Book Staff, Art Editor (4); Register Staff (4); Book Reviewers' Staff (4); Lininger Travel Club (3, 4), Vice-President (4); Central Colleens (1, 4), Chairman (4); Le Cercle Francais (3, 4); Library Monitor (4); Central Committee (4); Greenwich Villagers (3, 4); Girls' Natural Science Club (2, 3); Road Show (3); Scholastic Award (3); Junior Honor Society (2, 3); Girl Reserves (1, 2); Character Traits Committee (1); Art Honor Roll (2, 3, 4).

Adorably pretty and very artistic.

ELIZABETH SHAW

NATIONAL HONOR SOCIETY

O-Book Staff (4); Central Colleens (2, 3, 4), Vice-President (3), President (4); Lininger Travel Club (2, 3, 4), Sergeant-at-Arms (3); A Cappella Choir (4); Le Cercle Francais (2, 3, 4); Central High Players (3, 4); "Daddy Long-Legs" (4); Monitors' Council (3, 4); Library Monitor (4); Girls' Junior Glee Club, President (3); Road Show (3); French Play (3); Art Contest (3); Girls' Natural Science Club (2); Junior Honor Society (1, 2); Girl Reserves (1, 2, 3); Character Traits Committee (1).

*In Elizabeth we see
Leadership and ability.*

ELIZABETH SHEARER

Student Association, Secretary (4); Le Cercle Francais, Secretary (4); Lininger Travel Club (4); Library Monitor (4); Student Control (3); Road Show (3); Make-up (3); State Music Contest (3).

*Pretty hair and shining eyes,
Full of mischief, she's a prize.*

AVERILL SHERMAN

Gentlemen's French Club (3, 4); Golf (4); Hi-Y (1, 2, 3, 4).

*Dapper and peppy, a little bit bold,
But "Abie" we know, has a heart
made of gold.*

BERNICE SHERMAN

Register Staff (4); Advertising Solicitor (1,4); Book Reviewers' Staff (4); Library Monitor (4); Girls' Natural Science Club (3).

*She's well-liked and witty,
And exceedingly pretty.*

BERNARD SHIRK

NATIONAL HONOR SOCIETY

Mathematics Society (2,3,4), President (4); Inter-Club Council (4); Discussion Club (4); Library Monitor (4); Junior Honor Society (3).

*Bernard's always merry and gay,
And surging ahead day by day.*

JACQUES M. SHOEMAKER

NATIONAL HONOR SOCIETY

Regiment (1, 2, 3, 4), Captain (4); Gentlemen's French Club (2, 3, 4), President (4); C.O.C., Sergeant-at-Arms (4); Road Show (4); French Play (1,2,4); Track (4); Student Control (3); Junior Honor Society (1,2,3); Hi-Y (1,2,3,4); Purple Legion (2).

*His sparkling eyes attest his wit,
A jolly "cut-up," a genuine hit.*

DE VER SHOLES

Regiment (1,2,3,4), First Lieutenant and Adjutant (4); C. O. C. (4); Opera (3,4); Road Show (3,4); Library Monitor (4); Orchestra (1, 2,3,4); Football (4); Track (3,4); Hi-Y (3,4); Engineers (4).

Happy-go-lucky, but he can be serious, too.

BEN F. SHRIER

Forensic Society (1, 2, 3, 4), Vice-President (1), Treasurer (2,3), President (4); Library Monitor (4); Discussion Club (4); Declamatory Contest (4); Debate (1, 2, 3, 4); Speakers' Bureau (1,2,3).

An orator of no mean ability.

JEANNE SHUMAKER

Le Cercle Francais (3,4); Road Show (4); Make-up (4); Chorus (4); Library Monitor (4); Central Colleens (2); Girls' Junior Glee Club (2).

*Gifted? Very, with personality
and pep.*

RAMONA SLOSBERG

O-Book Staff (4); Register Staff (4); Latin Paper, Advertising Manager (4); Latin Club (3,4); Book Reviewers' Staff (4); Student Control (4); Library Monitor (4); Forensic Society (1,2,3), Secretary (3), Sergeant-at-Arms (2); Speakers' Bureau (2,3); Central Colleens (1, 2); Advertising Solicitor (1).

*Petite and vivacious,
Cute, sweet, and loquacious.*

ELIZABETH SMITH

Lininger Travel Club (3,4), Secretary (4); Central Committee (4); Le Cercle Francais (4); Costume Mistress (3,4); Library Monitor (4); A Cappella Choir (4); Girls' Junior Glee Club, Secretary (3); Student Control (3); Central Colleens (2,3).

Cute and saucy.

MARGARET SMITH

NATIONAL HONOR SOCIETY

Student Control (2, 3, 4); Central Colleens (2,4); Latin Club (4); Library Monitor (4); Junior Honor Society (2).

An "A" student with charm and ability.

MARJORIE SMITH

Central Colleens (1,2,3,4); Mathematics Society (3,4); Hockey (1,2, 3), Captain (2); Basketball (1,2); Baseball (1,2); Atlas Club (1,2); Secretary (2); G.A.A. (1,2); Girls' Junior Glee Club (2); Volleyball (1).

*Good deeds and good grades make
Marjorie an outstanding student.*





VICTOR SMITH

NATIONAL HONOR SOCIETY

O-Book Staff (4); Register Staff (3,4); Library Monitor (4); Quill and Scroll (4); Forensic Society (4); Central High Players (3,4); Junior Honor Society (1,2,3); Latin Club (2,3); Debate (3); Book Reviewers' Staff (3); "The Rear Car" (4).

Smith, a mighty man is he.



HARRIET SNYDER

A Cappella Choir (3,4); Girls' Senior Glee Club (3); Girls' Junior Glee Club (1,2); Opera (4); Road Show (4); Make-up (4); Central Colleens (4); Student Control (4); Chorus (4); Character Traits Committee (1).

A blond with an attractive style.



MEL L. SOMMER

Regiment (1,2,3,4), Second Lieutenant (4); Register Staff (3,4); O-Book Staff (4); Quill and Scroll (4); C.O.C. (4); Forensic Society (1,2,3); Atlas Club (1,2,3); Junior Honor Society (1).

Capable despite his nonsense.



JACK STAFFORD

He has a way of keeping his classes in an uproar.



EALON STANDEVEN

Regiment (1,2,3,4), Captain (4); Road Show (4); Central High Players (2,3,4); Library Monitor (4); Central Committee (3,4); C.O.C. (4); Crack Squad (3); Cheerleader (2); Basketball (1); Boys' Junior Glee Club (1); Speakers' Bureau (1); Engineers (4).

Good-natured, good-looking, good fun.

PHILIP STEIN

Boys' Junior Glee Club (3).

Philip is out to enjoy life.

GERALDINE STRAUSS

Student Control (2,3,4); Junior Honor Society (3); Girls' Junior Glee Club (1).

An intelligent and clever girl.

BETTY STUHR

Girls' Junior Glee Club (4).

A snappy, brown-eyed brunette.

ROSE MARIE SWANSON

Tennis (1,2,3,4); Golf (2,4); Basketball (1,4); Swimming (1,2,3); Chorus (1,2); Volleyball (1).

A tennis ball? She can whack it With a skilful swing of her racket.

MONA SWARTZLANDER

A Cappella Choir (3,4); National Music Supervisors' Convention (3); Girls' Senior Glee Club (2); Girls' Junior Glee Club (1); Opera (2).

Behind her quiet dignity There is concealed a jollity.

MAXINE SWINEFORD

Persistence always brings success to girls like Maxine.

J. EDWIN SUNDERLAND

NATIONAL HONOR SOCIETY

Regiment (1,2,3,4); Major (4); C. O.C., President (4); Road Show (2, 3); Manager (4); Monitors' Council (4); O-Book Staff (4); Hi-Y (1,2, 3, 4); Vice-President (4); Library Monitor (4); Central Committee (4); Central High Players (1,2,3,4); Engineers (4); Junior Honor Society (1,2,3); Secretary-Treasurer (2); Crack Squad (2,3); Boys' Junior Glee Club (1,2); Speakers' Bureau (1,2); Costumes, Opera (2); Color Day Committee (2); Basketball (1).

It seems natural for him to be successful in everything he undertakes.

SOLOMON SUSMAN

Road Show (1,2,4); A Cappella Choir (3,4); Art Contest (4); Orchestra (2,3); Regiment (2,3); Boys' Junior Glee Club (2,3); Opera (2); Los Sabios (4).

The source of many a side-splitter.

JANE THALL

A Cappella Choir (4); Road Show (4); Girls' Senior Glee Club (3); Girls' Junior Glee Club (2); Gym Pageant (2).

A voice like a nightingale.

JEAN THOMPSON

Central High Players (3,4); Sergeant-at-Arms (4); Central Committee (3,4); Student Control (3); Library Monitor (4); Make-up (3).

She puts her worries in a pocket with a hole in it.

WAYNE TOWNSEND

Baseball (2, 3, 4); Basketball (2); Chorus (2).

Quiet, retiring, but never glum, He surely makes a wonderful chum.

HELEN TURNER

Register Staff, Staff Secretary (4); Quill and Scroll (4); Atlas Club (2, 3); Sergeant-at-Arms (3); Book Reviewers' Staff (4); Central Colleens (1,2,3).

A spontaneous giggler.

BOHUMILA VAJGRT

Los Sabios (4); Library Monitor (4); Central Colleens (3,4); Girls' Natural Science Club (1,2).

Sometimes sober, sometimes gay, Never intruding in anyone's way.

MILDRED VONDRACEK

Library Monitor (4); Girls' Junior Glee Club (1,2).

She tries hard, and she always reaches her goal.

ELIZA WAGNER

Industrious, smiling and always helpful.



**DANIEL WAGSTAFFE**

NATIONAL HONOR SOCIETY

Inter-Club Council, President (4); O-Book Staff (4); Discussion Club, Vice-President (4); Forensic Society (1,2,3,4), Treasurer (3,4); Debate (2,3,4); Los Sabios (4); Library Monitor (4); Basketball (4); Football (4); Junior Honor Society (3); Boosters' Club (3); Regiment (1,2).

A friend, a debater, a poet — that's Dan.

**JANE WALRATH**

Central Committee (4); Central High Players (2,3,4); Le Cercle Français (2,3,4); French Play (2,4); Speakers' Bureau (1,2,3), Sergeant-at-Arms (3); Road Show (1,2,4); Lininger Travel Club (4); Costumes (2); Library Monitor (4); Character Traits Committee (1).

Ability, personality, and style. Plus "Gooper's" irresistible smile.

**HARRY WALSH**

Register Staff, Cartoonist (3,4); Student Council, Advertising Department (4); National Scholastic Cartoon Contest, First Prize (3).

His work for the paper is such a treat. For his drawings have all of the others beat.

**EVELYN WALTERS**

O-Book Staff (4); Art Contest (4); Greenwich Villagers (3,4); Los Sabios (4); Project Committee (2,3), Treasurer (2); Library Monitor (4); Boosters' Club (3); Girls' Junior Glee Club (3).

Evelyn never has much to say, But she has a winning way.

**PAUL A. WARD**

Library Monitor (4); Track (2,3,4); Basketball (4); Los Sabios (4); Latin Club (2); Regiment (1,2).

With many friends and full of thought, He has what others have long sought.

JOSEPHINE WEAR

Student Control (3); Central Colleens (2,4); Costumes (3).

Smiling, happy, little lass, A personality hard to surpass.

MARIAN WEINBERG

O-Book Staff (4); Register Staff (4); Book Reviewers' Staff (4); Student Control (3); Boosters' Club (2,3,4); Library Monitor (4); Girls' Senior Glee Club (2); Girls' Junior Glee Club (1,2); Project Committee (1,2); Quill and Scroll (4).

Lots of "it" with eyes bewiling; Witty, and ever smiling.

ARTHUR WEINER

Student Control (4); Forensic Society (4).

An athlete who is a pleasure to meet.

SOL WEINER

Wrestling (1,2,3,4); Football (2,3,4); Boys' O-Club (4); Regiment (2,3); Corporal (3); Boys' Junior Glee Club (1).

When he's your friend you can't go wrong.

SYLVIA WEINER

Forensic Society (3,4), Sergeant-at-Arms (4); Girls' Natural Science Club (3,4); Library Monitor (4); Central Colleens (3); Book Reviewers' Staff (3); Volleyball (1).

Happy her moods—she always fits.

GENEVIEVE WESTERFIELD

A Cappella Choir (4); Latin Club (4); Library Monitor (4); Girls' Senior Glee Club (2,3); Girls' Junior Glee Club (1); Central Colleens (2).

Studious, clever, and always a friend on whom we know we can depend.

DIXIE WHITE

Junior A Cappella Choir (4); Girls' Natural Science Club (3); Girls' Senior Glee Club (3); Girls' Junior Glee Club (1,2).

A clever student and a jolly companion.

IRVIN WHITE

Discussion Club (4); Atlas Club (3); Orchestra (1,2).

*He is sure to win
With his violin.*

CECIL WICKSTRUM

"Bud" certainly did like "Gin."

CHARLES WIESMAN

Forensic Society (4); Regiment (2,3), Sergeant (3).

He dances well, and he's dark and tall!

ROBERT WILKES

Regiment (1,2,3,4), Second Lieutenant (4); Road Show (4); C.O.C. (4); Track (2,3,4); Speakers' Bureau (3); Basketball (2,3).

*There's a twinkle in his eye
That will always get him by.*

JOHN WILLIAMS

Boys' O-Club (2,3,4); Library Monitor (4); Wrestling (2,3,4); Track (1,2,3,4); Los Sabios (4); Speakers' Bureau (2,3); Regiment (1,2,3); Cheerleader (2,3).

A pleasure to meet this athlete.

EDROSE WILLIS

Orchestra (1,2,3,4); Library Monitor (4).

*She plays the piano with skill,
She's liked for her constant good will.*

ELEANOR WINDTBERG

Basketball (3,4); Hockey (4).

*"Windy's" such a keen athlete,
That we don't dare to compete.*

JANET WOOD

O-Book Staff, Art Editor (4); Register Staff (4); Student Control (2,3,4), Vice-President (4); Greenwich Villagers (3,4), President (4); Central Committee (2,3,4); Lininger Travel Club (4); Inter-Club Council (4); Book Reviewers' Staff (4); Library Monitor (4); Central Colleens (1,2,3); Girls' Junior Glee Club (2).

Paris-bound on an artist's pencil.





ANNA BELLE WRIGHT

Basketball (2,3,4); Volleyball (2,3,4); Hockey (2,3,4); Baseball (2,3,4); Swimming (3); G.A.A. (2,3,4); Central Colleens (2,3).

*A pal to everyone she knows,
She's well-liked wherever she goes.*



FRANK GORDON

Boys' Junior Glee Club (1); Boys' Senior Glee Club (2,3); Opera (1,3); Swimming (1,2,3,4); Regiment (1,2,3).

He can ALMOST breathe water.



LEROY WRIGHT

Basketball (2); Wrestling (1).

He accomplishes things.



LINDLEY GORTON

Regiment (1,2,3,4); Second Lieutenant (4); C.O.C. (4); Student Control (4).

The ability to succeed is in his personality.



HELEN BEESON

Opera (4); A Cappella Choir (4); Student Control (4); Library Monitor (4).

*Helen is liked by everyone
For what she does is always well done.*



LLOIS HOREIS

Student Control, Secretary-Treasurer (4); Der Deutsche Verein (3,4); President (4); A Cappella Choir (4); Girls' Senior Glee Club (3,4); President (4); Girls' Junior Glee Club (1,2); Library Monitor (4); Opera (3); Central Colleens (2,3); Golf (2,3); Road Show (2); "Daddy Long-Legs" (4).

She will always be the life of the party.



ROBERT CLARK

A Cappella Choir (4); Track (4); Boys' Senior Glee Club (2,3); Basketball (2,3,4).

A modest man with modest ways.



WALTER LARSEN

Boys' Senior Glee Club (3,4); Boys' Junior Glee Club, President (1); Road Show (3,4); Opera (3); Football (1,2).

What's the use of trying to be a shining light if you're born a "son"?



ALICE DIESING

Greenwich Villagers (3,4); Library Monitor (3,4); Boosters' Club (4); G.A.A. (3); Spanish Club (3).

Alice's smile could bring sunshine into a deep, dark dungeon.



PHILIP MANGEL

Regiment (1,2); Boys' Junior Glee Club (1).

*Philip has gone through school;
we hope a little school has gone through Philip.*

JAMES PETERSON

Student Control (3,4); Orchestra (3,4), President (4); Opera (3,4); "The Poor Nut" (3); Road Show (3).

*When he plays the violin
Even Rubinoff listens in.*

GEORGIA PRINGLE

Los Sabios (4); Library Monitor (4).

A jolly fine girl.

FRANK RHOADES

Swimming (1,4).

A Central Eagle who took to the water.

BEATRICE ROSEMAN

Student Control (4); Central High Players (4).

*Snappy dresses, raven tresses,
Looks and knowledge she possesses.*

ELISABETH SAVELL

Girls' Junior Glee Club (3,4); Repertoire Recital (4).

A very demure miss.

GORDON SHOTWELL

Football (1,2,3); Track (1,2); Regiment (1,2,3); Sergeant (3).

Originality plus.

HYMIE TEMIN

Gentlemen's French Club (4); Forensic Society (4); Library Monitor (4).

A good worker.

HARLEY THOMSEN

TREASURER, JANUARY

Regiment (1,2,3,4), Sergeant (4); Road Show (2,3,4); Boys' Junior Glee Club (1,2); Boys' Senior Glee Club (3,4); Student Control (3); Stage Crew (2); Football (1).

A stalwart, blonde Central-light.

HARRIET WILLE

She has as many fine points as a paper of pins.

ROBERT WILLIAMS

When he's a friend, he's a real one.





BROWNING EAGELSTON

IDEAL BOY
MOST POPULAR



ELIZABETH RHOADES

IDEAL GIRL
PRETTIEST GIRL



GLENN CARMAN

BEST BOY SCHOLAR



FAYE GOLDWARE

BEST GIRL SCHOLAR



JACQUES SHOEMAKER

MOST HAPPY-GO-LUCKY
BEST DANCER



GEORGIA McCAGUE

MOST POPULAR GIRL



CARSTEN CARLSEN

BEST BOY ATHLETE



VIRGINIA BOUCHER

BEST GIRL ATHLETE



ROBERT LEVINE

HANDSOMEST BOY



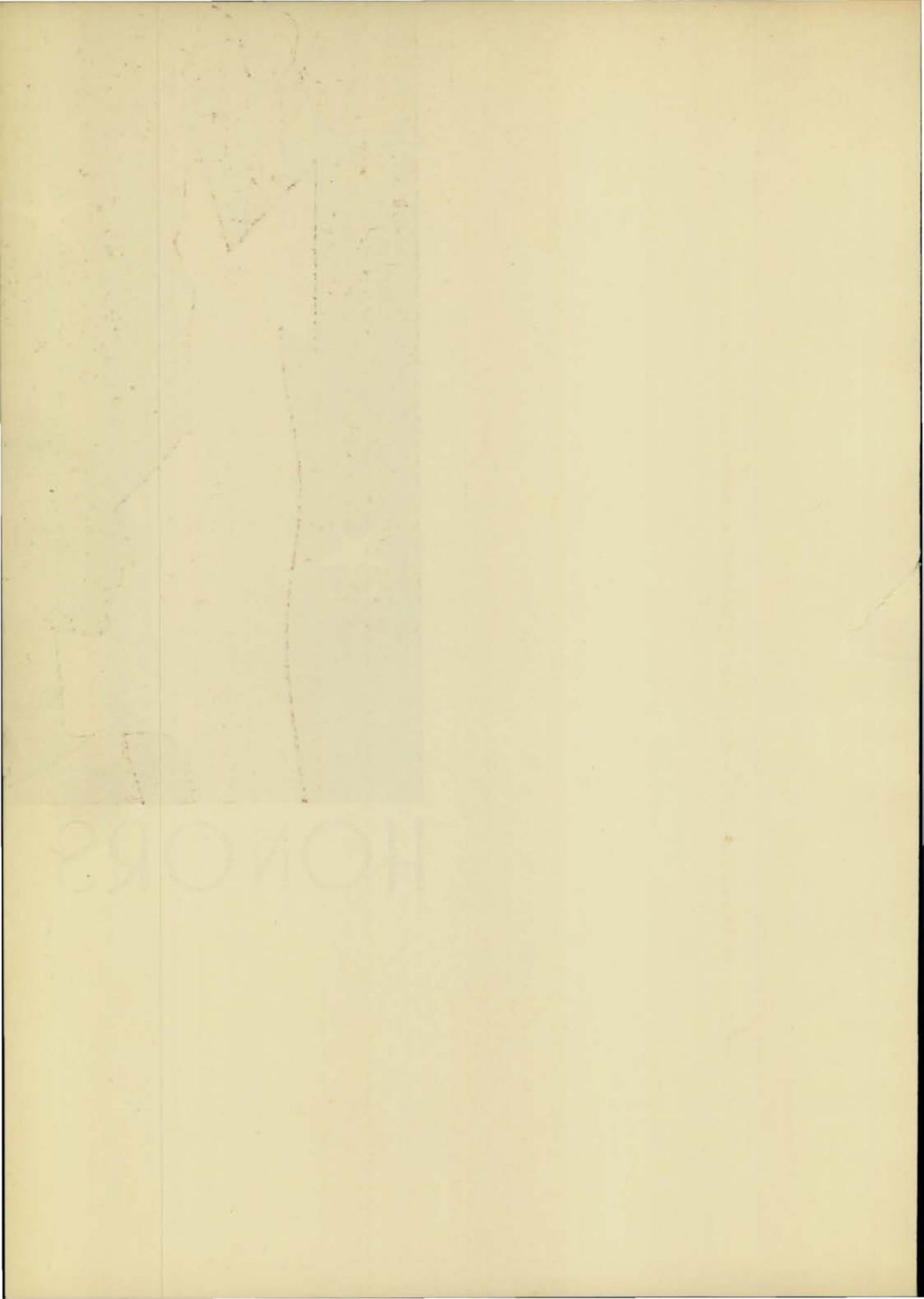
KATHLEEN McCAFFREY

SWEETEST GIRL





HONORS





NATIONAL HONOR SOCIETY

Leon, Saxe, Horejs, Moucka, Shirk, Clark, Wagstaffe, Schroeder, Carman, Resnick, Smith, Nathan, Binkley.
 Rosenbaum, Carnazzo, Egelston, Goudy, Buchanan, Eldridge, Elliott, Sunderland, Shoemaker, Lovgren, Dalby, Brown, Sandham.
 Masters, McCague, Shaw, Kilbourn, Mullis, Beranek, Sinclair, Herron, Rhoades, Bush, Fore, Allen, Heald, Bedell.
 Robertson, Oruch, Foster, Smith, Perlis, Anderson, Handley, Fellman, Fisher, Reilly, Senéz, Crow, Rosenfeld, Goldware.

NATIONAL HONOR SOCIETY

CENTRAL'S "PHI BETA KAPPA" is pictured above. It is her twelfth addition to the roster of the National Honor society. They are her most deserving young men and young women of 1932. Each year a faculty committee, under the chairmanship of Principal J. G. Masters, selects from the upper quartile of the graduating senior class those students deemed most worthy of membership in this society. Four years of excellence in scholarship is only one of the essential requirements. Their ability to cooperate with their teachers and fellow students, their service and loyalty to the school, and their superior traits of character qualify these Centralites to receive the highest possible honor that can be conferred on high school students.

In 1921 the National Honor society was organized mainly through the suggestion and efforts of our own Mr. Masters. Central High school, therefore, takes a special pride in this nation-wide high school organization, whose chapters now number over seven hundred.

These fifty-four seniors comprise the largest National Honor society group ever elected at Central High school. They also have the distinction of being the first group to receive this honor in the new auditorium. The Rev. Dr. Laurance Plank, of the First Unitarian church, announced the members on April 7.

Central looks to these students to attain success for themselves and to be a credit to her. They are the cream of her '32 crop.



JUNIOR HONOR SOCIETY — EPSILON CHAPTER

Cohen, Zelinsky, Hildebrand, Horn, Hansen, Burruss, Cunningham, Wolf, White, Leon, Bolker, Smith, Rohrbough, Rees, Lundgren, Leffler, McGee, Goos, Rosewater, Dodds, Dodson, Reynolds, Tunison, Kennedy, Chadwell, Baldwin, Hirsch, Kraus, Vogel, Fore, Sammel, Klaiman, Beeson, Dansky, Taylor, Sherrig, Morse, Allen.

JUNIOR HONOR SOCIETY — DELTA CHAPTER

Lerner, Bednar, Osborne, Bourke, Adams, Potter, Bonekemper, Bunce, Sandham, Weinstein, Peery, Hurtz, Powell, Snapp, Gogela, Rees, Civin, Senter, Campagna, Resnick, Gordon, Lischer, Barish, Moran, Jensen, Buckland, Christopher, Berkowitz, Millman, Kulakofsky, Grobee, McDonald, Marconnit, Vance, Travis, Byrd, Thomas, McMartin.





JUNIOR HONOR SOCIETY — GAMMA CHAPTER

Friedman, Bordy, Perkins, Harrison, Tarnoff, Ralya, Glicken, Hart, Kaplan, Zimmerman, Holyoke, Carp, Lec, Hackler, Pederson, Birge, Perley, Dansky, Hornstein, Holst, Spragne, Ross, Auracher, Welsh, Waechter, Hall, Simmons, Tretiak, Maystrick, Safersteen, Slutsky, E. Silverman, Backstrom, Maxwell, Hansen, Harrington, Holmstrom, Fore, S. Silverman, McCreary.

JUNIOR HONOR SOCIETY

JUNIOR HONOR SOCIETY is the highest goal for underclassmen. Its purpose is to recognize individuality and high achievements in both school activities and studies, thus encouraging leadership and developing character. This institution was founded by Principal J. G. Masters in 1923 and is sponsored by a council of five faculty members.

Scholarship and character are the requirements for election to Junior Honor society; sophomores and juniors must also show qualities of leadership, service, and loyalty to the school. All those elected must have two A's and no grade below B, although one C is allowed if the individual is carrying five subjects.

The organization consists of three chapters: Epsilon for freshmen, Delta for sophomores, and Gamma for juniors. Fifteen per cent of each class was elected this year to membership by the general council of sponsors and three members-at-large. Active membership ceases at the end of one year. Graduates who have belonged to Junior Honor society are considered honorary members.

Announcement of the elections was made in the Central High auditorium on April 27 with Dr. H. A. Senter in charge. Miss Jessie M. Towne, dean of girls, announced the Gamma chapter; Mr. Fred Hill, dean of boys, the Delta chapter; and Dr. Senter, dean of faculty, the Epsilon chapter. This year a new amendment, which provides for election of fifteen instead of ten per cent from each class to their respective chapters, was made. This is the same percentage of election as that in the National Honor society constitution.

QUILL AND SCROLL

IN RECOGNITION OF outstanding work in the journalism department, forty-four new members were elected to the Alpha chapter of Quill and Scroll, international honor society for high school journalists. Elections were announced at banquets held in the high school cafeteria. During February the Central chapter was host to all other Quill and Scroll chapters in the city at a banquet at which Ballard Dunn, editor of the *Omaha Journal*, spoke.

There are four requirements that all candidates must have fulfilled in order to be elected to this society. They must (1) do outstanding work in journalism, (2) rank in the upper third of their class, (3) receive the recommendation of the journalism instructor, and (4) have the approval of the international secretary-treasurer of the organization, Dr. George H. Gallup, to their recommendation.

Quill and Scroll was founded by a group of teachers at the University of Iowa in 1926. Its purpose is to advance the standards of journalism by instilling a higher code of ethics in students. The society publishes a magazine, *Quill and Scroll*, a copy of which is sent to each member of the organization.

Of the total number elected to Quill and Scroll this year, twenty-two were members of the first semester staff and the same number from the second semester staff.

There are now over six hundred active chapters of the society in the United States. Over 12,000 students make up the total membership in these chapters.

QUILL AND SCROLL

Leitch, Homann, Rose, Changstrom, Goethe, Fisher, Friedman, Slosburg, Smith, Buchanan, Resnick, Nathan, Dalby, Horejs, Sommer, Rosenbaum, Gershter, Bush, Laserowitz, Clark, Elliott, Aydelotte, Miller, Epstein, H. Lerner, Hart, L. Lerner, Kilbourn, Hansen, Dolgoff, Armstrong, Reilly, Senez, Pehle, Rosenfeld, Heald, Goldware, Robertson, Foster, Turner, Handley, Allen, Magzamin, Fore, Masters.





O-BOOK STAFF

Leitch, Homann, Rose, Changstrom, Sinclair, Carman, Lovgren, Hoisington, Kreculov, Black, Sommer, Fisher, Smith, Buchanan, Resnick, Nathan, Horejs, Dalby, Flax, Frohardt, Moucka, Osten, Saxe, Rosenbaum, Slosburg.
 Bush, Miller, Sunderland, Elliott, Clark, Aydelotte, Wagstaffe, Chadwell, Harris, Epstein, Hart, Sandham, McCague, Frumkin, Handley, Allen, Kilbourn, Armstrong, Reilly, Senez, Rosenfeld, Masters, J. Wood, Blixt, Mullis, Hess.
 Heald, Goldware, Robertson, Crow, Shaw, Perlis, Weinberg, Rhoades, Herron, Chin, Fore, Fellman, Walters, Nichols, M. Wood.

O-BOOK STAFF

Editor-in-ChiefERMAGRACE REILLY
 Associate Editors.....{ELIZABETH FORE
 {PAUL FRUMKIN
 Honors Editor.....HARRIET ROSENFELD
 ASSISTANTS— GLENN CARMAN BETTY FELLMAN GEORGIA MCCAGUE EDWARD ROSENBAUM
 HELEN BLIXT FAYE GOLDWARE JOHN MILLER MEL L. SOMMER
 LEONARD NATHAN EDWIN SUNDERLAND
 Club Editor.....DOROTHY BUSH
 ASSISTANTS— EVELYN EPSTEIN ELBERT HOISINGTON MAX RESNICK
 RUTH ALLEN ROSE FISHER ROBERT LOVGREN DAN WAGSTAFFE
 HELEN BLIXT RUTH HERRON JANE MASTERS
 Activities Editor.....PEGGY HEALD
 ASSISTANTS— JEANNE MULLIS HUDSON ROSE ELIZABETH SHAW
 GALE AYDELOTTE ELIZABETH RHOADES JOHN SANDHAM VICTOR SMITH
 FLORA MARIE HANDLEY FRANCIS ROBERTSON DAVID SAXE
 Write-Up Editor.....MARTHA WOOD
 ASSISTANTS— JOHN BUCHANAN SAM MCCLENNAGHAN RAMONA SLOSBERG
 VERA ARMSTRONG SANCHIA KILBOURN KATHLEEN MCCAFFREY JANE WALRATH
 HARRY BLACK GEORGE OSTEN ROSELLA PERLIS MARIAN WEINBERG
 DOROTHY BROWN
 Sports Editor.....FRANK CHANGSTROM
 ASSISTANTS— JAMES CHADWELL JAMES HARRIS
 Girls' Sports Editor.....EVA JANE SINCLAIR
 Art Editors.....{LOUISE SENEZ
 ASSISTANTS— SENIOR ART CLASS {JANET WOOD
 Business Manager.....RAYMOND ELLIOTT
 Circulation Manager.....JOHN MOUCKA
 Circulation Manager.....{EUGENE DALBY
 {CHARLES HOREJS
 LITERARY ADVISER ANNE LANE SAVIDGE ART ADVISER MARY L. ANGOOD BUSINESS ADVISER ANDREW NELSEN

REGISTER STAFF

FIRST SEMESTER

Editors.....	{ EDWARD CLARK WILLIAM B. HART DALLAS K. LEITCH
Sports Editor.....	FRANK CHANGSTROM
News Editor.....	MEL L. SOMMER
Staff Cartoonist.....	HARRY WALSH
Reviewers' Staff Editors.....	{ ROSE FISHER ELIZABETH FORE

REPORTERS

VERNA ARMSTRONG	BEN GERSHATER	LILLIE LERNER
HELEN BLIXT	FAYE GOLDWARE	JOHN MILLER
DOROTHY BUSH	FLORA MARIE HANDLEY	BERNICE PETERSEN
EUGENE DALBY	WILLIAM HART	MAX RESNICK
BROWNING EAGELSTON	CHARLES HOREJS	FRANCES ROBERTSON
EVELYN EPSTEIN	SANCHA KILBOURN	EDWARD ROSENBAUM
ELIZABETH FOSTER	HARRY LERNER	EVA JANE SINCLAIR

BUSINESS STAFF

Business Manager.....	RAYMOND ELLIOTT
Advertising Manager.....	LEONARD NATHAN
Circulation Managers.....	{ JOHN BUCHANAN VICTOR SMITH
Staff Secretary.....	HELEN TURNER

ADVERTISING SOLICITORS

DOROTHY AUSTIN	CHARLOTTE PETERSON	BUSINESS ADVISER
RAMONA SLOSBURG	MARIAN WEINBERG	ANDREW NELSEN
LITERARY ADVISER	ART ADVISER	
ANNE LANE SAVIDGE	MARY L. ANGOOD	

REGISTER STAFF

Leitch, Buchanan, Smith, Homann, Rose, Chadwell, Changstrom, Sinclair, Goethe, Egelston, Fisher, Katskee, Kemper, Resnick, Nathan, Dalby, Horejs, Flax, Sommer, Rosenbaum, Gershater, Friedman, Epstein.
 Bush, Lascrowitz, Frumkin, Harris, Clark, Elliott, Aydelotte, Maxwell, Miller, Hart, H. Lerner, L. Lerner, Rolf, Kilbourn, Petersen, Austin, Armstrong, Reilly, Senz, Pehle, Rosenfeld, Fore, Slosburg.
 Heald, Goldware, Robertson, Foster, Hansen, Dolgoff, Weinberg, Turner, Handley, Wood, Allen, Dodds, Magzamin.





ERMAGRACE REILLY
EDITOR-IN-CHIEF OF O-BOOK



ANNE LANE SAVIDGE
FACULTY ADVISER

FOR THE PAST FIVE years the *Register* has received All-American rating in the national high school newspaper contest sponsored by the National Scholastic Press association. The *Register* has received the highest award of the Columbia Scholastic Press association since 1928, an honor corresponding to the N. S. P. A. award.

REGISTER STAFF

SECOND SEMESTER

Managing Editor.....	DALLAS K. LEITCH
Editor-in-Chief.....	EDWARD CLARK
News Editor.....	MEL L. SOMMER
Reviewers' Staff Editors.....	(ROSE FISHER ELIZABETH FORE
Copy Editor.....	WILLIAM B. HART
Departments Editor.....	EUGENE DALBY
Sports Editor.....	FRANK CHANGSTROM
Staff Cartoonist.....	HARRY WALSH
Editorial Assistants — Journalism III's:	VERNA ARMSTRONG, DOROTHY BUSH, EVELYN EPSTEIN, BEN GERSHATER, FLORA MARIE HANDLEY, FAYE GOLDWARE, CHARLES HOREJS, SANCHIA KILBOURN, HARRY LERNER, JOHN MILLER, LEONARD NATHAN, MAX RESNICK, EDWARD ROSENBAUM, EVA JANE SINCLAIR.
Journalism II's:	GALE AYDELOTTE, RUTH ALLEN, JAMES CHADWELL, KATHRYN DODDS, DORA DOLGOFF, BROWNING EAGELSTON, WILLIAM FLAX, LLOYD FRIEDMAN, PAUL FRUMKIN, JUNE GOETHE, FRANCES HANSEN, PEGGY HEALD, ROBERT HOMANN, DAVID KATSKEE, LANE KEMPER, PHILL LASEROWITZ, SALLY LOONAN, SYLVIA MAGZAMIN, CALVIN MAXWELL, MARIAN PEHLE, ERMAGRACE REILLY, HARRIET ROSENFELD, LILLIAN ROLLE, RAMONA SLOSBURG, LOUISE SENEZ, BERNICE SHERMAN, DAN WAGSTAFFE, MARIAN WEINBERG, JANET WOOD.
Business Manager.....	RAYMOND ELLIOTT
Advertising Manager.....	DOROTHY AUSTIN
Advertising Assistant.....	JAMES HARRIS
Circulation Managers.....	(GALE AYDELOTTE HUDSON ROSE
Exchange Manager.....	FRANCES ROBERTSON
Staff Secretary.....	HELEN TURNER



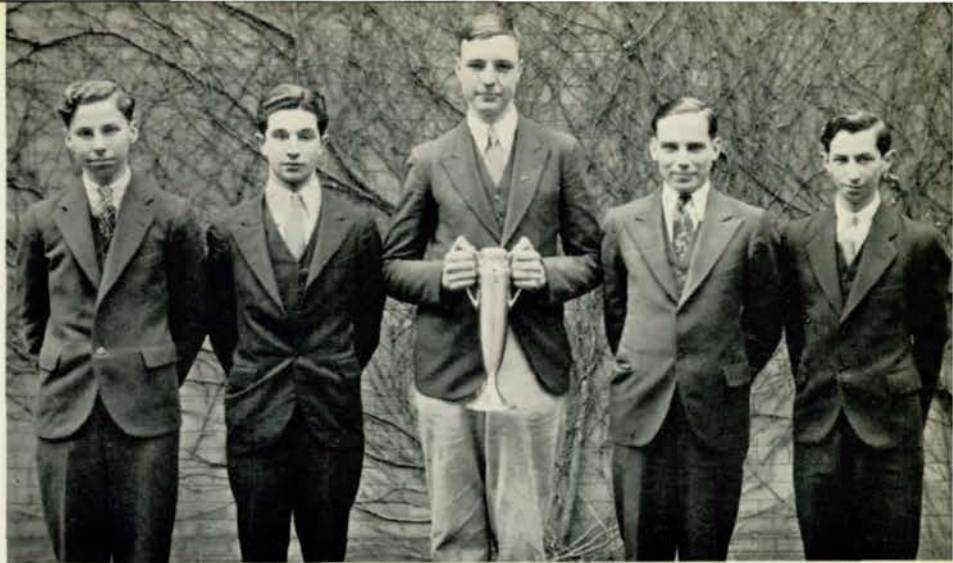
REVIEWERS' STAFF

Price, Zimmerman, Jones, Chait, Bordy, Kirkpatrick, Corkin, Silverman, Kirshenbaum.
 Nathan, Horejs, Dalby, Flax, Goethe, Friedman, Green, Rolf, Slosburg.
 Harris, Bush, Resnick, Miller, Clark, Sinclair, Epstein, Fisher, Whitebook, Dodds.
 Heald, Robertson, Sprague, Handley, Foster, Pehle, Armstrong, Reilly, Weinberg, Senez, Rosenfeld.
 Goldware, F. Fore, Mock, Gross, Eldridge, Cropper, Hansen, Petersen, Gould, E. Fore, Wood.

MONITORS' COUNCIL

Rhoades, Sunderland, Bloom, Clark, Carman, Resnick.
 Bedell, Sandham, Dalby, Shaw, Foster.





DEBATE TEAM

Stiefler, Saxe, Wagstaffe, Rosenbaum, Shrier.

DEBATE

WITH THREE VETERANS, David Saxe, Ben Shrier, and Dan Wagstaffe, all '32, returning this fall, the Central High debaters have met with a fairly successful season, winning the Midland championship and taking third place in the city tournament.

The Central team defeated twenty other schools to win the championship of the Midland college debate held annually at Fremont, Nebraska. Central is the first school to win the Midland tournament twice. David Saxe was awarded a one hundred dollar scholarship to Midland college for his fine debating during the tournament.

The debaters were not as successful in the city tournament. In the first round they lost to Benson, but the team went through the second, third, and fourth rounds to beat South, Creighton Prep, and Tech. In the final round the team lost to North, the winner. Benson took second in the tournament, Central gained third place, while Creighton Prep, Tech, and South divided last place.

Edward Rosenbaum, David Saxe, Ben Shrier, and Dan Wagstaffe served as regulars on the team, while Robert Stiefler '34 was alternate.

The question debated this year was "Resolved that the several states should pass legislation providing for compulsory unemployment insurance." Miss Sarah Ryan, debate coach, who has trained many splendid teams at Central, believes that this year's team is one of the finest she has ever had.

NATIONAL ATHLETIC HONOR SOCIETY

THE HIGHEST HONOR that can be given to any athlete in a secondary school has been bestowed upon nine Central men. Those elected to the National Athletic Honor society this spring represent each of the four major sports: baseball, basketball, football, and track.

Membership in this society of nine hundred and ninety-eight chapters is limited to men earning letters in major sport. Their average must be above the general average of the school for three consecutive semesters and they must exemplify the highest type of citizenship and sportsmanship.

Each of the men chosen this year has been active in two or more of the major sports and several have participated in minor athletics. Ferraro, Chadwell, Egelston, Binkley, Levine, and Phillips are seniors, while Howell, Birge, and Quinn are juniors. Only juniors and seniors are eligible for the organization.

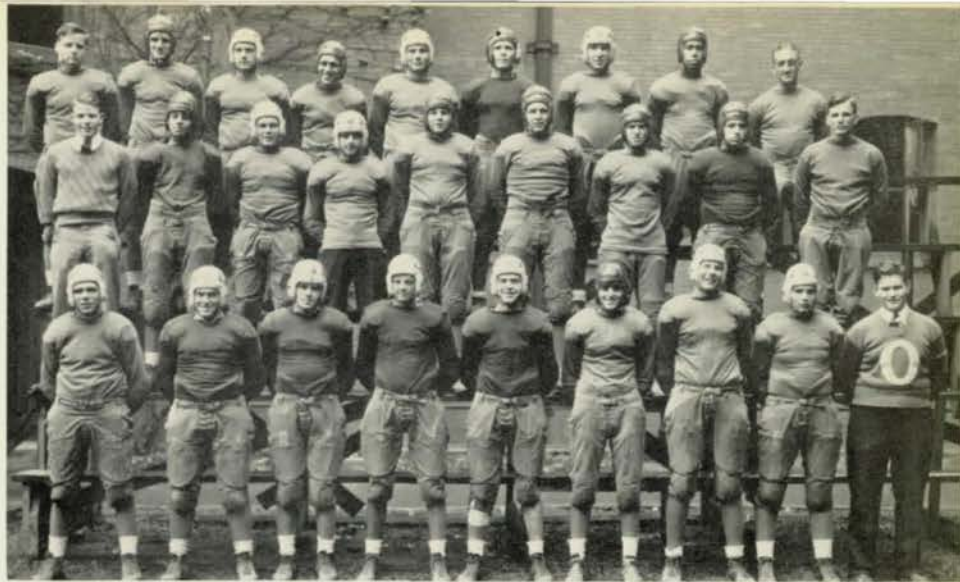
Frank Ferraro is a letterman in football and took part in wrestling, while Jim Chadwell earned his letters in basketball and golf, and was active in track. Ed Binkley engaged in basketball, baseball, and track, while Egelston was a football player, wrestler, and tennis man. Levine and Phillips played football. Levine was also a member of the swim squad and Phillips a star trackster.

Johnny Howell has been a regular in football, baseball, and basketball. Birge has been a regular on the baseball and basketball squads, and a reserve in football. Quinn is a veteran in football and baseball, and a member of the basketball reserves.

NATIONAL ATHLETIC HONOR SOCIETY

Egelston, Phillips, Quinn, Chadwell, Howell,
Levine, Ferraro, Birge, Binkley.





FOOTBALL TEAM

Birge, Howell, Engelston, Rossitto, Kasal, Weiner, Loder, Phillips, Coach Scott, Jetter, Stickler, Levine, Binkley, Reickes, Hesler, Altsuler, Goldstein, Coach Knapple, Ferraro, Buell, McCann, Carlsen, Scanlon, Korney, Quinn, Douglas, Blackburn.

FOOTBALL

COACH F. Y. KNAPPLE and Assistant Coach John Scott built the 1932 Purple and White eleven around nine returning lettermen. A line that was heavier than usual and a fast, shifty backfield went through the season scoring victories against three elevens, tying three, and losing to two, one being their old rival, Tech.

North opened the season against the Knapplemen and, being one of the strongest teams in the city, held the Purple to a scoreless tie. The Knapplemen's first taste of victory came in the game with St. Joe. The win over the Missourians, 7-6, favored the team to trim South in their first night game of the year, but the meeting resulted in the second scoreless tie of the season.

Missouri Valley chances were ruined when the Lincoln eleven made a last minute rally to put over a touchdown and win by its six points, 13-7. Fremont was met at mid-season and found the Knapplemen in their best form. When the lights were dimmed on the Midland college field, the Omahans were ahead, 14-0. The outstate eleven is the only non-conference team the Purple meets regularly.

The last three games of the season were split in the same number of ways, one win, one tie, and one loss. The Abe Lynx, on their own field, came from behind to tie the tally, 6-6; while the Benson Bunnies gave the winning game, 19-6; and Tech administered the defeat, 27-0. The Tech game ended football in high school for six of the Purple, but found five of the regulars and a complete team of reserves ready for next year's competition.

BASKETBALL

BASKETBALL during the 1932 season found the Central quintet with a gym of its own for the first time in the history of the school. As a result the season ended with the Purple tied for first with Lincoln in the Missouri Valley conference and second to Creighton in the city race. One point in the final game against the Prep five kept the team from victory and the city title.

Creighton Prep was the main obstacle of the Knapplemen. Twice the Hickey five managed to score wins over the Purple, the first tally 17-12, and the second, 21-20. If the Knapplemen could have scored the needed points, the city title would have rested with Central by virtue of Tech's win over the Prepsters in the last game of the year. Lincoln split the card, winning on its own floor, 22-15, and losing here, 24-11.

Abe Lincoln and North were the only other quints to defeat the squad. The Abe Lynx edged out a 13-11 victory after having been defeated in the first meeting, 23-14. North also retaliated and won the second affair, 14-10, after losing, 19-17. The Abe Lynx finished below the Purple in the Valley loop and North was third in the city.

Tech, St. Joe, South, and Benson were each beaten twice by the Knapplemen. Tech scores were 24-10 and 11-9, while St. Joe went under by 10-9 and 19-15 decisions. The Packers were still easier to down, falling 23-10 and 20-16. Benson, former champions, were defeated 21-13 and 18-9, while Harlan was vanquished 19-17 in an outside game. Three regulars returned for action this season and two will be back for next year's work. Several promising reserves are also scheduled for duty next season.

BASKETBALL TEAM

Coach Knapple, Frame, Best, Hughes, Korney, Birge, mgr.; McFarland, Howell, Melcher, Carlsen, Chadwell, Altsuler.



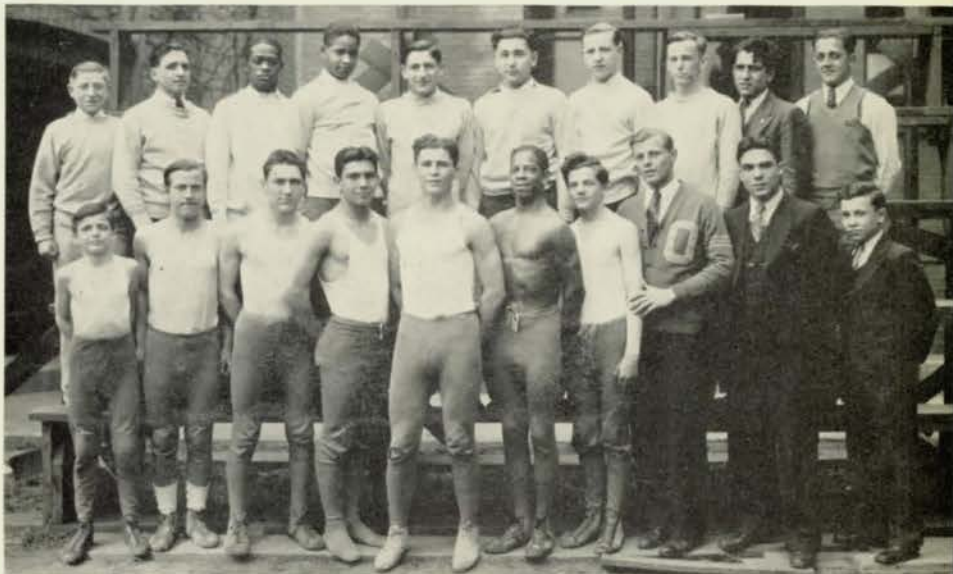


SWIMMING TEAM

Bexten, Bock, Rhoades, B. Buell, Sessinghaus, Kraft.
 Jetter, Amos, D. Buell, Levine, Coach Scott.
 Holcomb, Quick, Douglas, Lima, Taylor, Rimerman, captain.

WRESTLING TEAM

Slosburg, Campagna, Allen, Garner, Mann, Susman, Etter, Swinarski, Rossitto, Silvio.
 Vuylstek, Peterson, Di Giorgio, Carnazzo, Weiner, Williams, MacNeill, Riddle, Ferraro, Wolk.





TRACK TEAM

Hoff, Rimerman, Carroll, Best, Rosenbaum, Brownlee, Kasal, Gordon, Petersen,
 Perkins, Kerr, Davis, Wilkes, Elliott, Rodwell, Brookman, Ogilvie, Pemberton,
 Payne, Williams, Frame, Barbee, Hughes, Binkley, Phillips, Black, Cozad, Coach Schmidt.

BASEBALL TEAM

Stickler, Condon, Mickel, Melcher, Lohse, Talbitzer,
 Mazzeri, Churchill, Wilson, Kurtz, Scanlon, mgr.; Baudo, Birge,
 Reynolds, Altsuler, Howell, Quinn, Carlsen, Korney, Coach Knapple.





BOYS' GOLF AND TENNIS TEAM

Christie, Sherman, Chadwell, Rasmussen, Egelston,
Hamilton, Wiemer, Friedman, Barker.

BOYS' O-CLUB

Peterson, Taylor, Pemberton, Phillips, Carnazzo, Rasmussen, Weiner, Loder, Holcomb, Sessinghaus,
B. Buell, Stickler, Vuylstek,
Giangrasso, Rossitto, Di Giorgio, Levine, Ferraro, Melcher, Chadwell, Black, Birge, Binkley, Campagna,
Thornburgh,
Friedman, Hamilton, Lima, Rimerman, Ralya, Altsuler, Korney, Hesler, Scanlon, Kasal, Buell, Bexten,
Kerr, Egelston, D. Buell, Riddle, McCann, Carlsen, Quinn, Douglas, Blackburn, Reickes, Howell,
Williams.



GIRLS' ATHLETIC ASSOCIATION

AS THE ONLY girls' athletic society at Central, the G. A. A. meets regularly twice a month on Mondays and functions similarly to the school's departmental clubs, having a constitution, officers, outings, and other forms of social recreation. Central has been a member of the Nebraska League of Athletic Associations since the spring of 1929.

Under its supervision the point system for winning athletic letters was worked out. For 600 points a girl is entitled to the numeral of her class year. The highest local award, a purple 'O', is given to those receiving 1200 points under this system. At the 1,600 mark the first Nebraska award is given, a white 'N' on a red triangle background. The highest possible award, given for 2,000 points, is added to the previous letter, forming a red star with the white 'N' in the center and 'L.' 'A.' 'A.' on three points of the star. A heart examination before each award and the observance of training rules are necessary before any girl is eligible to a letter.

Every spring the organization holds its annual banquet for the purpose of giving recognition to those girls who have earned letters during the year. Such awards are presented at this annual event. This year, the banquet was held on May 17.

The Girls' Athletic Association is open to any high school student, but freshmen are especially urged to join. Virginia Boucher heads the organization, Ellen Forehead is vice-president, and Eva Jane Sinclair, secretary-treasurer. Mrs. Glee Case and Miss Alice Holmes are the club's sponsors.

GIRLS' ATHLETIC ASSOCIATION

Noe, C. Masters, Borman, Burt, W. Anderson, J. Lawson, Maystrick, Griffin, Clark, Case, Vogel, Dobbins, Bane, Sprague, Saxton, Larmon, Chadwell, Boucher, Nolan, Rothkop, G. Eayrs, D'Andrea, Pollard, Eller, L. Wolfson, R. Wolfson, H. Jorgensen, Woodford, Baldwin, J. Jorgensen, J. Eayrs, L. Fore, Bickel, Hannibal, Peake, Fletcher, Forehead, V. Anderson, M. Anderson, Sinclair, B. Peterson, E. Kuchl, Vaughn, Hassert, Collins.





SWIMMING

Blixt, Weinstein, Hypse, Lundell, W. Anderson, Mock, L. Anderson, Meyer, Divoky, M. Larson, V. Jorgensen, Yost, Davies, Boucher, M. Anderson, Collister, Marconnit, Duffield, Frohardt, H. Ellison, Chin, Coren, Rupe, Carr, S. Larson, J. Ellison, Gleason, Manoli, Jessup, M. Smith, Baldwin, Cockle, Sessel, Grobee, Broad, Bernstein, Clark, Thomas.

ADVANCED SWIMMING

Burt, Kavan, B. Petersen, Allardyce, Goethe, Kulakofsky, Palmer, Piesch, Broad, Sprague, Grobee, Clark, Sexson, Bickel, Larmou, Kursawe, Abbott, Rabel, Baxter, Jones, Whitmore, Stein, Parker, Noe, Fike, Graves, Borman, Fuqua, Boucher, Case, M. Anderson, Saxton, Link, Gemma, Fletcher.



GIRLS' BASKETBALL

TWO-COURT BASKETBALL, the most popular of the seven types of girls' sports, finished its second season with even more success this year than last.

To meet the requirements of the point system of the Girls' Athletic Association, practice was held after school in the gymnasium once a week from December to March. At the end of the season class teams were chosen for an inter-class tournament. In their first tilts both the juniors and the sophomores won decisive victories over their opponents; and at the end of the tourney the sophomores stood in first place with no losses, and the juniors ranked second.

Betty Nolan, Nancy Jane Chadwell, Jeanette Lawson, Mary Hassert, Joan Broad, and Mary Vaughn, captain, were members of the victorious sophomore team. Virginia Boucher was acting captain for the seniors who placed third in the tournament; Mary Sprague was the junior leader, and Helen Bane headed the freshman squad.

Twelve Central players and six substitutes took part in a city-wide basketball playday held at Technical High school, March 18. These playdays have become annual affairs and are held as the closing feature at the end of the season of each major girls' sport.

Besides the intramural tilts this season, homeroom competitions were held after school in the gym. Homeroom 215, the Senior Eagles, emerged victorious from the tournament. Headed by the senior captain, Virginia Boucher, the team consisted of F. Broad, Reynolds, Sinclair, Wagner, and Wright. This was the first time that homeroom contests have ever been featured at Central, but because of the new gymnasium these games proved popular with the student body.

GIRLS' BASKETBALL

C. Masters, Sprague, Bane, Robertson, Chadwell, Boucher, Nolan, J. Lawson, C. Peterson, Burt Collins, W. Andersen, Broad, Vaughn, Saxton, Pollard, Borman, Beber, J. Eayrs, Beranek, L. Anderson, F. Broad, V. Anderson, Wagner, Wright, Eller, L. Wolfson, R. Wolfson, Damicus, Forehead, Hassert, Baldwin, J. Jorgensen, Sinclair, Heintze, Heintze, G. Eayrs, Rothkop.





HOCKEY

Wood, Bane, Saxton, Beber, Larmon, Vaughn, Burt, Borman, Beranek, Case, Fletcher, Eller, L. Wolfson, R. Wolfson, Hassert, Boucher, Collins, Heintze, J. Eayrs, G. Eayrs, Rothkop, Forehead, Sprague, V. Anderson, Chadwell, Wright, Broad, Pollard.

HOCKEY

HOCKEY IS ONE OF the most vigorous sports sponsored by the girls' athletic department. Miss Charlotte MacDougal, gym instructor in 1922, founded the sport at Central ten years ago.

Practice is held once a week from October to December at the Dewey field at 32nd and Dewey Avenue or in the Central cage northwest of the building. This year new equipment, furnished by the school's athletic department, was available for the girls' use.

Near the end of the season two teams were formed under the direction of Mrs. Glee Case, to participate in a school tournament. Virginia Boucher headed the winning team, while Mary Vaughn was in charge of the other squad. Competition was unusually close this year, Boucher's team winning the tournament by only a one-game margin.

In the winning lineup Wright played R. E.; Heintz, L. E.; Rothkop, R. W.; Windtberg, L. W.; Werner, C. H.; G. Eayrs, R. H.; Fletcher, L. H.; R. M. Wolfson, R. F.; Eller, L. F., and Borman, G. G.

All girls who had participated in eight weeks of practice by the end of the season were allowed to try to pass three G. A. A. hockey tests under the organization's point system for athletic awards. To all the girls who passed these tests additional points toward their athletic letter were given.

November 24, Central entertained two hockey teams from Tech at a Hockey Playday between Tech and Central. A banquet and circle games followed the afternoon's competition.



GIRLS' GOLF AND TENNIS

J. Masters, J. Lawson, C. Masters, Bane, W. Anderson, L. Lawson, Sprague, Korney, L. Anderson, Campagna, Broad, Saxton, Collins, Vaughn, Reynolds, Chadwell, Boucher, Howley, Harris, Sterling, Borman, Hultman, Holmstrom, Nolan, Johnson, Fales, Jones, Leach, Coffey, Bickel.

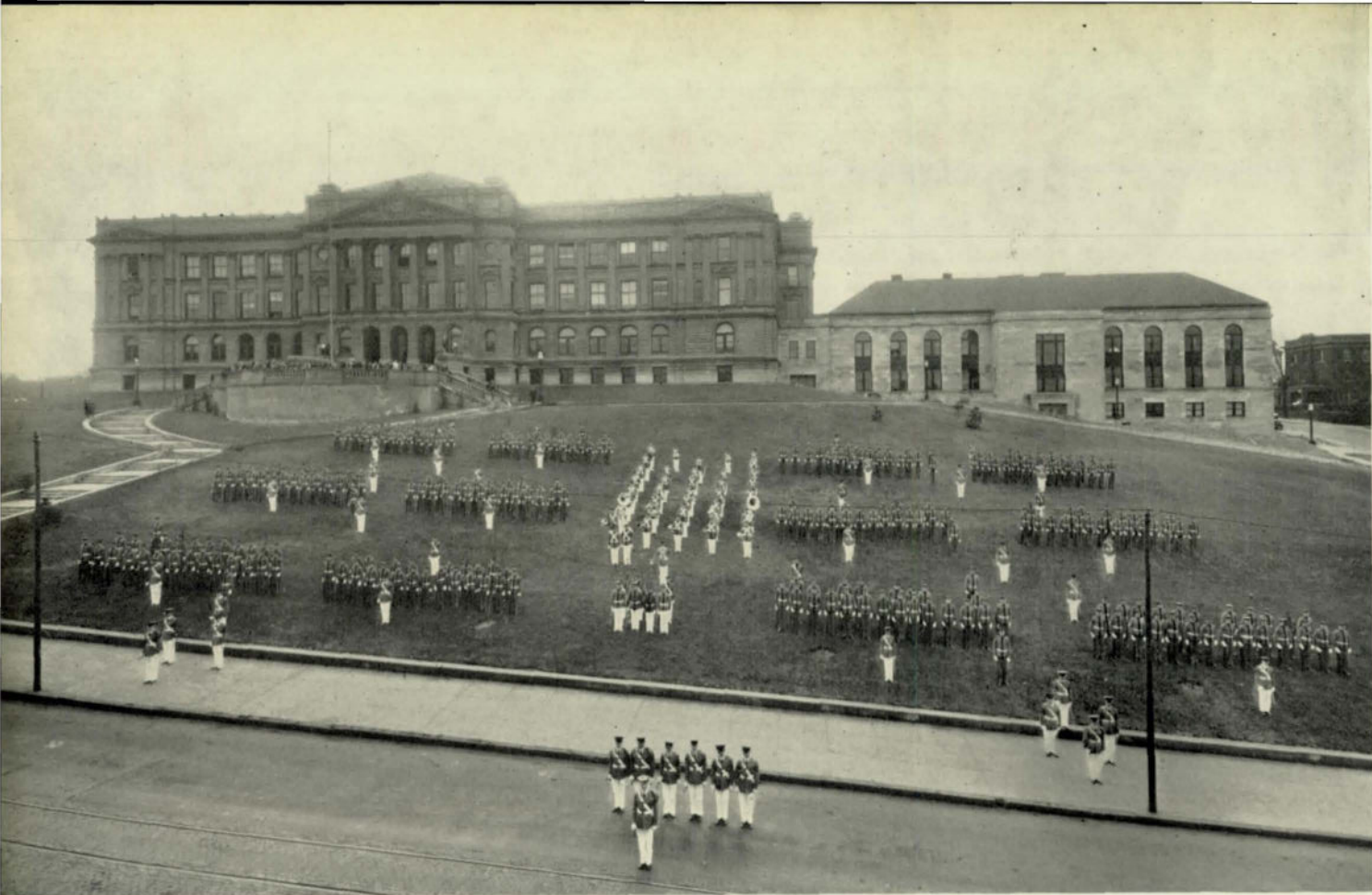
GIRLS' BASEBALL

R. Keuhl, Baysdorfer, E. Keuhl, W. Andersen, Banc, Robertson, C. Masters, Lee, Campagna, J. Lawson, L. Lawson, Wright, Nolan, Boucher, Korney, Jackson, Beranek, Crain, Sprague, M. Anderson, Hassert, L. Anderson, Rothkop, Saxton, Vaughn, Eayrs, Griffen, Borman, Broad, Chadwell, V. Anderson, Collins, Jones, Fletcher.

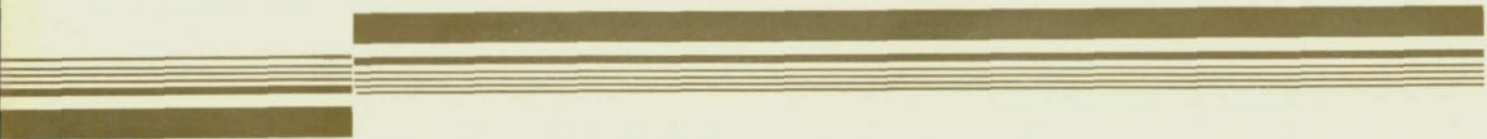




COLOR GUARD



REGIMENTAL





ROBERT S. ELDRIDGE
LIEUTENANT COLONEL



F. H. GULGARD
COMMANDANT

OMAHA HIGH SCHOOL REGIMENT

IN SPITE OF A difficult year financially, Lieutenant Colonel Robert S. Eldridge and Commandant F. H. Gulgard have maintained the high standards of excellence set by the regiment in previous years.

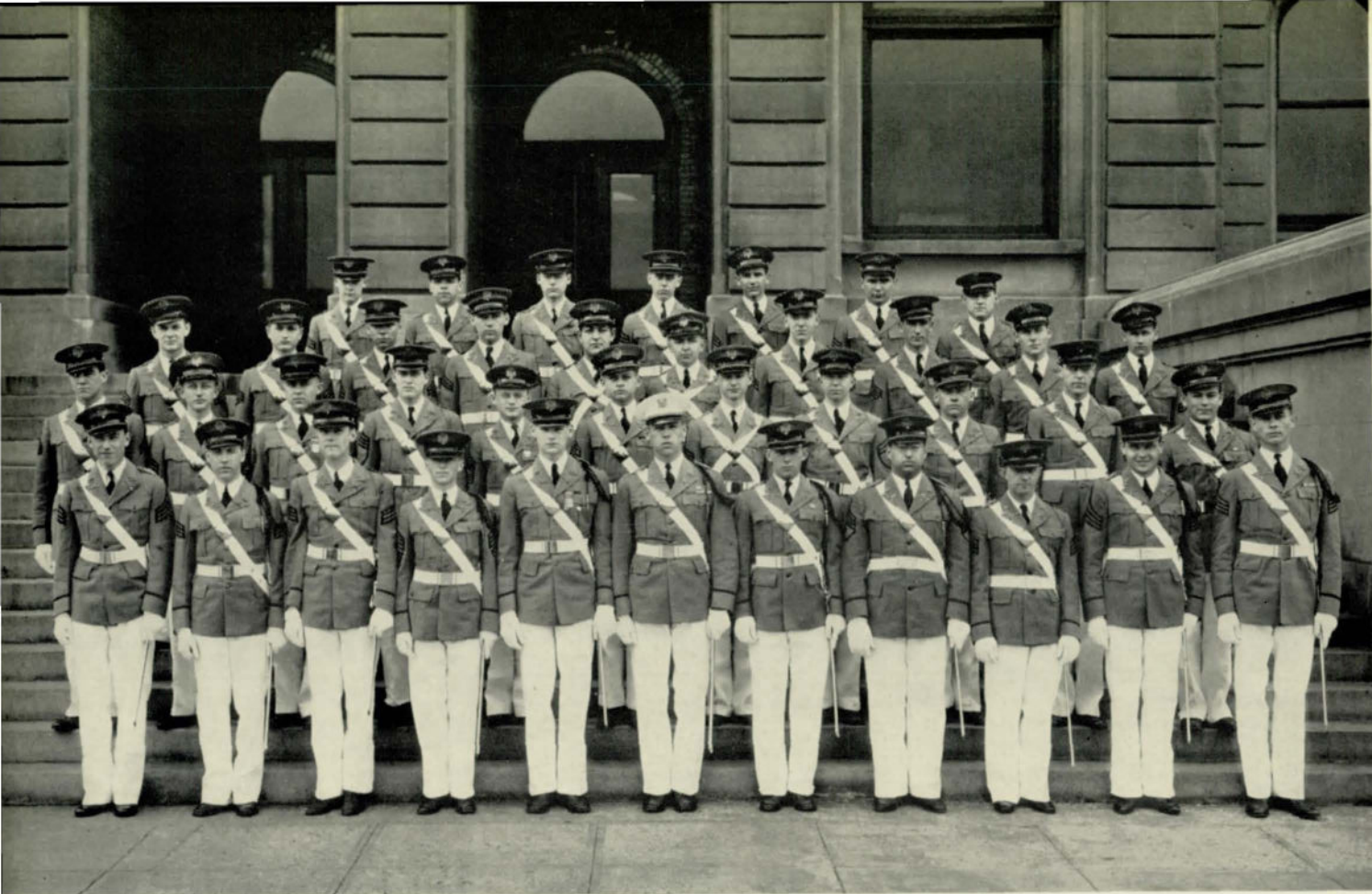
The cadets organized in September the preliminary sale of activity stamps which replaced the Student Association book of previous years, and, as a result, the largest number of tickets in the history of the school was sold.

Four sold-out performances of the Road Show, held during March in the new auditorium, at which time more than 5,000 persons attended, resulted in an income which provided for a fine camp. Major J. Edwin Sunderland was the manager of this year's Road Show.

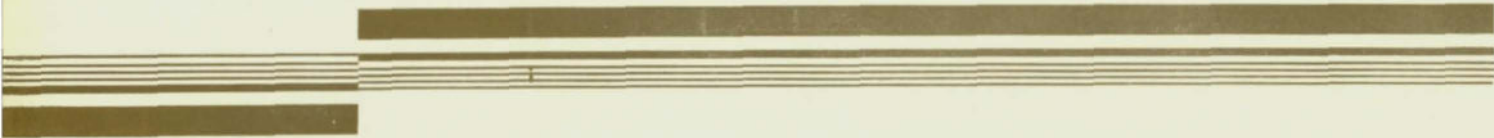
Lieutenant Colonel Eldridge has conducted his duties as student military head in a clear-minded, intelligent manner. He is well liked by the men and has the fourth highest scholastic average in a class of three hundred, outstanding for a student, exceptional for a busy leader. Commandant Gulgard is completing his thirteenth year as commandant. His kind, helpful manner is the underlying cause of the Regiment's success during this time.

Colonel Eldridge with the staff officers, Captain and Adjutant John Sandham, Captain and Commissary Hudson Rose, Captain and Personnel Adjutant John Buchanan, Captain and Quartermaster Ward Combs, Captain and Ordnance Herman Goldstein, and First Lieutenant and Aide Howard Cooke judge the lines. Eldridge announces the winners of each regimental, giving points to the three winning companies. He also makes inspections and computes general ratings.

After more than three years of waiting, Central has its own rifle range constructed at the expense of the regiment and under the direction of Sergeant S. B. Moore and Major Sam McCleneghan.



CADET OFFICERS' CLUB



CADET OFFICERS' CLUB

ROBERT S. ELDRIDGE
LIEUTENANT COLONEL

J. EDWIN SUNDERLAND
MAJOR FIRST BATTALION

SAM McCLENEGHAN
MAJOR SECOND BATTALION

JOHN H. SANDHAM
CAPTAIN AND ADJUTANT

S. HERMAN GOLDSTEIN
CAPTAIN AND ORDNANCE

JACQUES M. SHOEMAKER
CAPTAIN COMPANY A

EDWARD L. BINKLEY, Jr.
CAPTAIN COMPANY B

EALON H. STANDEVEN
CAPTAIN COMPANY C

DONALD A. BLOOM
CAPTAIN COMPANY D

RICHARD J. KENT
CAPTAIN COMPANY E

GEORGE P. RASMUSSEN
CAPTAIN COMPANY F

DALLAS K. LEITCH
CAPTAIN BAND

WARD A. COMBS
CAPTAIN AND QUARTERMASTER

JOHN D. BUCHANAN
CAPTAIN AND
PERSONNEL ADJUTANT

HUDSON McK. ROSE
CAPTAIN AND COMMISSARY

JOHN J. MOUCKA
FIRST LIEUTENANT AND
ADJUTANT FIRST BATTALION

DE VER SHOLES
FIRST LIEUTENANT AND
ADJUTANT SECOND BATTALION

RICHARD BUELL
FIRST LIEUTENANT COMPANY A

JAMES CHADWELL
FIRST LIEUTENANT COMPANY B

JACK STAFFORD
FIRST LIEUTENANT COMPANY C

ROBERT A. LEVINE
FIRST LIEUTENANT COMPANY D

C. RICHARD BROWN
FIRST LIEUTENANT COMPANY E

VINCENT E. NELSON
FIRST LIEUTENANT COMPANY F

JULIUS HORNSTEIN
FIRST LIEUTENANT BAND

HOWARD COOKE
FIRST LIEUTENANT AND AIDE

JOHN M. JENKINS
SECOND LIEUTENANT AND
QUARTERMASTER FIRST BATTALION

JACK R. KINNARD
SECOND LIEUTENANT AND
QUARTERMASTER SECOND BATTALION

HARRY BLACK
SECOND LIEUTENANT COMPANY A

RICHARD COZAD
SECOND LIEUTENANT COMPANY A

RAYMOND S. ELLIOTT
SECOND LIEUTENANT COMPANY B

MAURICE R. CAMPBELL
SECOND LIEUTENANT COMPANY B

ROBERT BARBEE
SECOND LIEUTENANT COMPANY C

GILBERT FREIDEN
SECOND LIEUTENANT COMPANY C

LORING T. HUNZIKER
SECOND LIEUTENANT COMPANY D

ROBERT C. WILKES
SECOND LIEUTENANT COMPANY D

ROBERT DAVIS
SECOND LIEUTENANT COMPANY E

MARVIN I. PIZER
SECOND LIEUTENANT COMPANY E

ROBERT HOMANN
SECOND LIEUTENANT COMPANY F

MEL L. SOMMER
SECOND LIEUTENANT COMPANY F

ROBERT MOWBRAY
SECOND LIEUTENANT BAND

ENGINEERS

THE ENGINEERS, the fellows who are responsible for the laying out of the annual cadet encampment at Valley, are chosen each year by the Lieutenant Colonel of the regiment and by Mr. F. H. Gulgard, Commandant. They are usually selected from the officers, sword-bearing non-coms, and sergeants. An exception is made occasionally to admit an outstanding corporal.

These men leave for camp one week before the cadets and spend that entire time in preparing for the arrival of the regiment. Part of their work is to survey for the proper location of the company streets and for the miscellaneous tents such as the large "Y" tent, the first-aid tent, and the mess tent. They erect the cook and shower shacks and fit all the camp structures with adequate lighting facilities.

The engineers work under the guiding hand of Mr. F. Y. Knapple. Food for the outfit is prepared by that cook supreme, "Papa" Schmidt. In appreciation of their hard work on those hot days in June, the boys are allowed the privilege of swimming in a sandpit near the site of the camp.

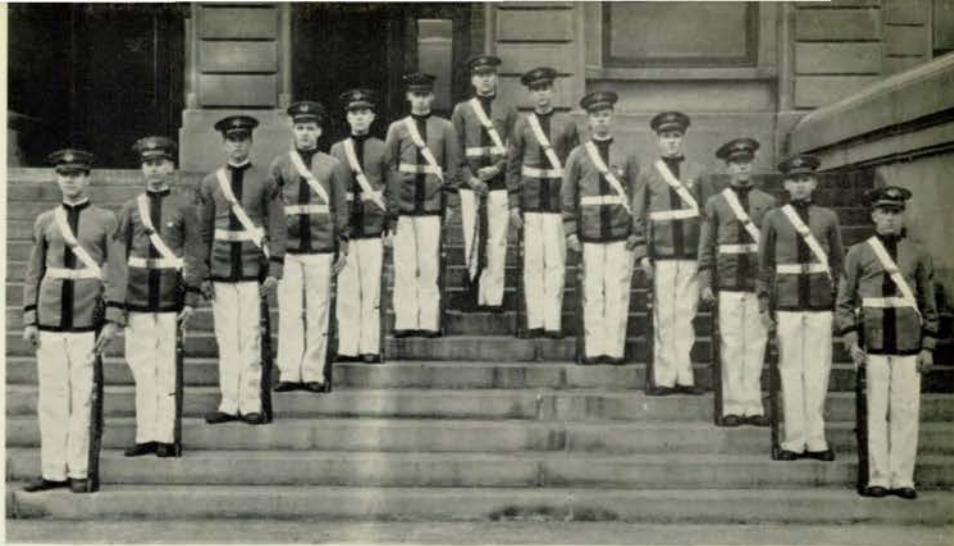
This year's fine material is destined to make camp progress as smoothly as it has in previous years.

Engineers for this year are Sam McCleneghan, captain; Robert Eldridge, Edwin Sunderland, John Buchanan, and Ward Combs, representing headquarters; John Brain and Harry Stickler, Company A; De Ver Sholes and Ronald Scott, Company B; Ealon Standeven and Garrett Fonda, Company C; Robert Levine and Alfred Martin, Company D; David Powell and Dexter Clarke, Company E; John Moucka and Howard Cooke, Company F; and Jack Encell, Band. Hudson Rose and John Swanson were assigned to the kitchen. These men left school June 1 to begin preparations for the 1932 encampment.

ENGINEERS

Powell, Moore, Cooke.
Clarke, Stickler, Martin, Eldridge, Buchanan, Fonda, McCleneghan.
Mr. Knapple, Sholes, Sunderland, Brain, Standeven, Swanson, Rose.
Combs, Moucka, Encell, Scott, Levine.





CRACK SQUAD

Ranney, Fonda, Kelley, Bonekemper, Schroeder, Wetherell, Adams, Lloyd, Clarke, Cowdery, Holyoke, Quady, Powell.

RIFLE RANGE



BAND

MAKE WAY FOR THE BAND! Central High's Cadet band is the finishing touch that makes most school events complete. Composed of about forty members, the band plays for school assemblies, athletic competitions, regimentals, and civic parades and programs. This year, for the first time in the history of the Road Show, the complete band presented an act, playing selections from the "Student Prince," arranged by Mr. Henry Cox.

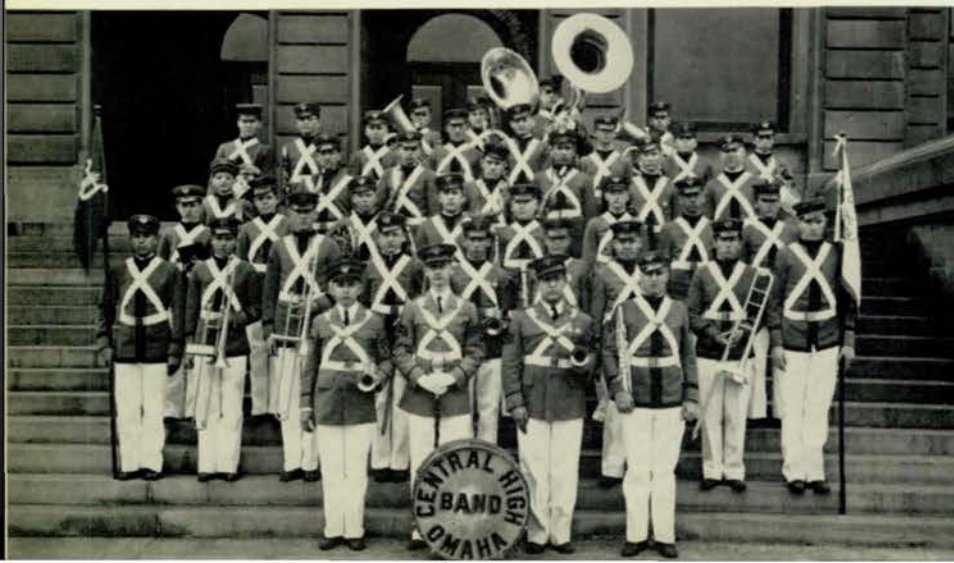
This year's organization is officered by Dallas K. Leitch, Julius Hornstein, Bill Hill, and Robert Mowbray, aided by First Sergeant George Trobough. During 1931-32 it has provided music for the bonfire preceding the Central-Abe Lincoln night football game, the American Legion armistice parade, the six football and eight basketball games, the Eagle Scout court of honor, the opening act of the nineteenth annual Road Show, the "Know Omaha" parade, the police inspection, the Omaha air races, the band banquet on June 2, and the cadet encampment at Valley.

In addition to providing music, band men have won recognition on the rifle range. A crack team of ten has been shooting records throughout the year which compare favorably with those of the companies. Sergeant S. B. Moore, in charge of the range, says, "The only thing wrong with the band team is that there are ten good shots instead of five for their team. This leaves out five men who otherwise would be on the team." The squad placed first in the rifle competition among the companies.

Commandant F. H. Gulgard and Mr. Henry Cox have worked with the band for over a decade and have contributed much to make each year successful. The band has been awarded the regiment's inspection banner for seven years and hopes to capture it again in 1932.

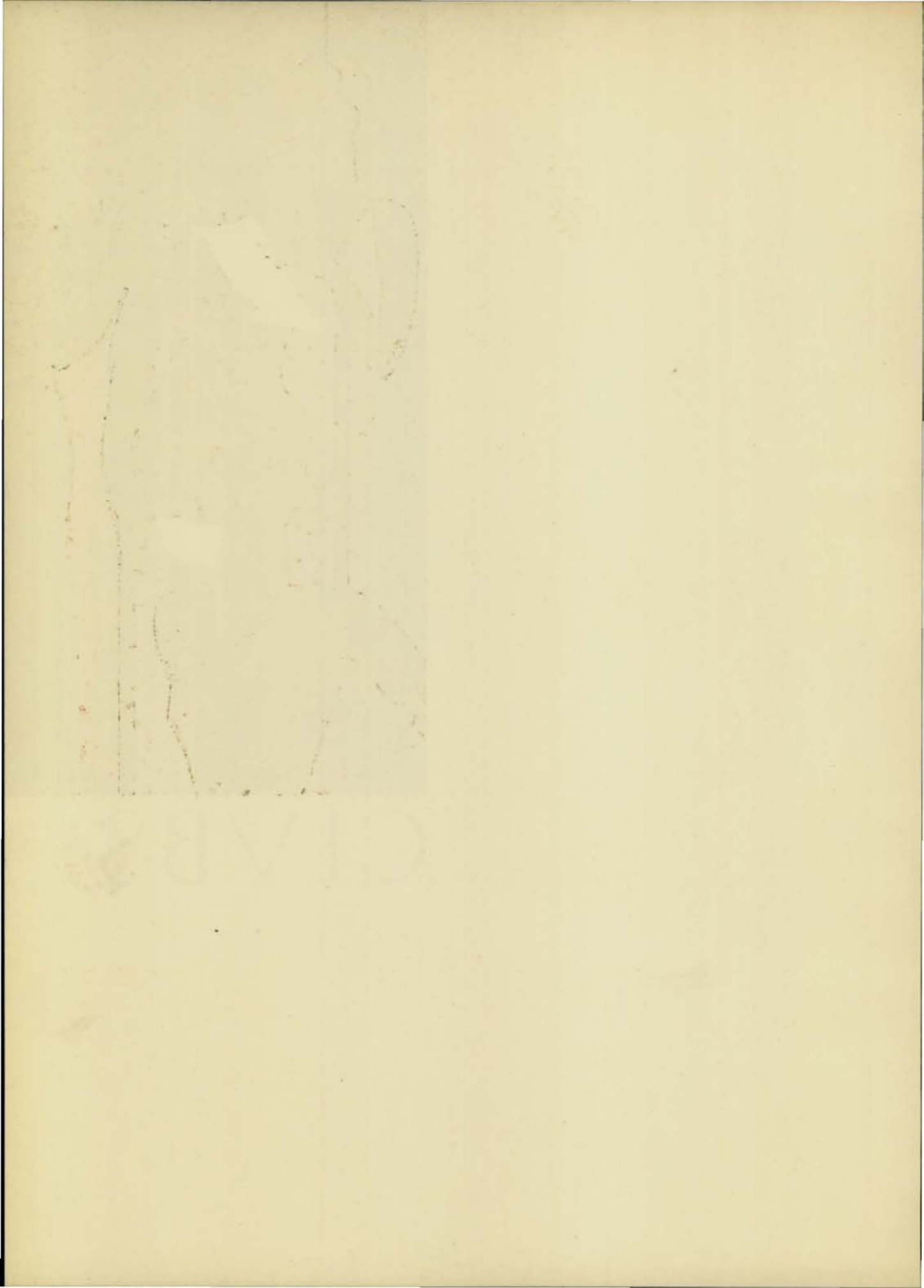
BAND

Sherman, Joe Hornstein, Rosenberg, I. Rushlau, Schneiderwind, Morton, Stearns, Kopecky, Tuchman, McCreary, Bialac, Cullen, Finkel, Eisenstatt, Christensen, Pigman, Tatelman, Jones, Rowley, MacDuff, Senter, Lamplot, Encell, Bednar, Nelson, Ewing, Miller, Nathan, P. Rushlau, Merritt, Anderson, Stein, Marshall, Aikin, Jenness, Hughes, Mowbray, Leitch, Julius Hornstein, Trobough.





CLVBS





LININGER TRAVEL CLUB

Bliss, K. Shearer, Waechter, E. Shearer, Brott, Kelly, Humphrey, Walrath, Eldridge, Brown, Bedell, Allen, Johnson, Nall, Harris, Armstrong, Nolan, Epstein, Yant, Simmons, Wright, Vance, J. Wood, Finlayson, Reilly, Rosenfeld, Senez, Fore, Indoe, Maystrick, Campbell, Quick, Shaw, Bicklmeir, Dow, Sinclair, M. Wood, Beranek, Barish, Kvetensky.

CLUBS

FOR ALMOST THIRTY years Central's clubs have been connected directly with the school's curriculum and have been under the supervision of faculty members. Every club is represented in the Inter-Club Council, which establishes the relations between clubs and determines the policy of the organizations.

The thirty-five organizations come under two classifications — service and departmental. Foremost in the latter group is the Student Control, which preserves order during the lunch period, assists the librarians, and tutors backward students. Central Colleens, the largest organization, promotes fellowship among the girls and fosters school projects. The Titian club ushers at all Central's performances except the Road Show. Founded in 1903, the Lininger Travel club has the distinction of being Central's oldest society. Almost every department sponsors a club and carries on many projects.

The presidents of the clubs for the second semester are as follows: Inter-Club Council, Dan Wagstaffe; Student Control, Loring Hunziker; Orchestra, Bill Hill; Titians, Ruth Allen; Lininger Travel, Elizabeth Fore; Colleens, Elizabeth Shaw; Mathematics society, Ruth Herron; Greenwich Villagers, Janet Wood; Girls' Natural Science club, Dorothy Bush; Boys' Biology Round Table, Glenn Carman; Central Committee, Robert Davis; Forensic society, Edward Rosenbaum; Central High Players, Dorothy Anderson; Boosters' club, Robert Howser; Atlas club, Robert Braun; Discussion club, Max Resnick; Le Cercle Français, Dorothy Brown; Gentlemen's French club, Jacques Shoemaker; Latin club, Jeanne Mullis; Der Deutsche Verein, Teddy Guenther; Spanish club, Harry Black.



CENTRAL COLLEENS

Hopkins, Howley, Maxwell, Graham, Bush, Baxter, Holmstrom, Saxton, Schneider, Lipp, White, McDonald, K. Kavan, E. Keuhl, Larsen, Epstein, Cohn, Reynolds, Rubendall, Febowitz, Safersteen, Jorgensen, Horn, Fitz-Dowd, K. Keuhl, Rosenfeld, Welsh, Herron, Handley, Helgren, Wear, M. Millman, G. Millman, Arbitman, Hassert, Forehead, Burstein, E. Johnson, Beranek, B. Kavan, Dimke, Reilly, Cote, Herrick, L. Anderson, Mock, Rockfellow.

CENTRAL COLLEENS

C. Smith, Braude, Silverman, Borman, E. T. Smith, Harriss, Lischer, Mossman, Bedell, M. Harrington, R. Allen, N. Bordy, Hoefener, Long, Maystrick, Fore, N. Berkowitz, D'Andrea, Resnick, Ackerman, M. Henningson, M. Smith, Barish, Yousem, McCleneghan, Monsky, Vogel, M. Foster, P. Petersen, Backstrom, Goodsell, Marconnit, Peake, Dodds, Robertson.





CENTRAL COLLEENS

Ashby, Bicklmeir, McGuire, Nolan, McCaffrey, Campbell, Armstrong, Schatz, M. Doan, Guion, E. Anderson, Patton, A. Armstrong, Dow, Knudsen, Randall, Palmer, B. Doan, Goldberg, Miller, Heald, H. Meyer, Whitebook, Sessel, Collister, C. Morton, Ackermann, Himmelstein, Cherniss, Ferer, Lazerson.
Sommer, Blumkin, Osoff, Shaw, Doris Johnson, Baldwin, Quick, Foster, S. Berkowitz, Holman, Bickel.

CENTRAL COLLEENS

Kraus, Sammel, Klaiman, Dansky, Hansen, Biurvall, Pehle, Shumaker, Clark, Mayer, Sandall, Amos, Bane, Woodford, Bernstein, B. Anderson, Yates, Buckland, Harris, K. Shearer, Hess, Hulst, Phillips.
Kulakofsky, Fawcett, D. Johnson, Senez, Corkin, Sinclair, Auracher, Van Buskirk, Hall, Buono, Beavers, Goetz.
Zook, Stein, M. Smith, Beeson, Rubnitz, Byrd, Slutsky, J. Smith, Weinstein, C. Fisher, Crow, Blixt, O'Leary.



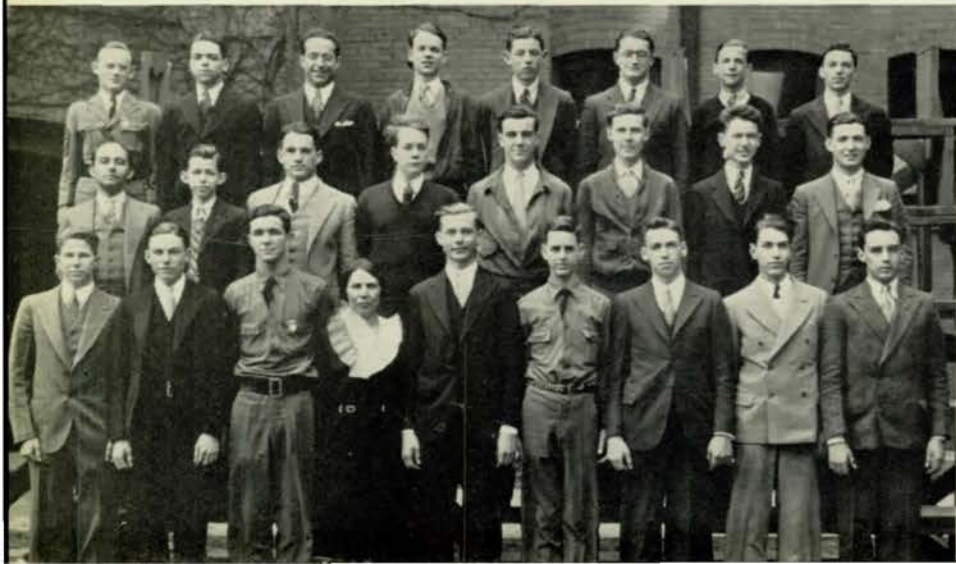


LE CERCLE FRANCAIS

Burke, Lonergan, Allen, S. Silverman, E. Shearer, Walrath, Brown, Fore, Bliss, Moore, Dodds, Bedell, Hoyt, Hall, Gilbert, Sears, Peggy Young, Humphrey, McFayden, K. Shearer, Finlayson, Waechter, Wright, McCague, Berkowitz, Smith, Senez, Eldridge, Biurvall, Shumaker, Armstrong, McCaffrey, Miss Bozell, Robertson, Friedman, E. Silverman, Shaw, Dolgoff, Johnson, Kelly, Wagstaffe, Yousem, Patsy Young, Miss Phelps.

GENTLEMEN'S FRENCH CLUB

Combs, Davis, Goldstein, Goudy, Sherman, Duquette, Hebert, Sandham, Bordy, Kaplan, Egelston, Smith, Buell, Rasmussen, Leitch, Tarnoff, Cooke, Shoemaker, Ranney, Miss Bozell, Bloom, Fonda, Eldridge, Wilkins, Homann.





A CAPPELLA CHOIR

Dergan, Perkins, Bentley, K. Hansen, C. Mossman, Butts, Kugler, Green, France.
 D. Taylor, Jenness, Roberts, E. Clark, Greer, Ames, B. Gould, M. Fry.
 Tenenbaum, B. Harris, Macumber, Mayer, McCaffrey, Pounds, Bishop, E. Shaw, F. Whitebook,
 Fellman, Lundell.
 McMartin, K. Campbell, Trussell, Cote, Traver, Goethe, Fales, Allis, Koory, Shellberg.

A CAPPELLA CHOIR

Harris, Wolfe, Thorsen, Allison, Dorinson, Hesler, Frankel, Thompson, Lewis, Hornstein, Bowman.
 Meyers, Thall, Smith, Snyder, Gardner, Spalding, Maier, Bernstein, Susman, Turkel.
 Heald, Bliss, Dolgoff, Swartzlander, Morton, Eller, Stone, Eldridge, Maxwell, Kissel, Horejs.
 Kohlberg, Horn, V. Rhodes, Westerfield, Meyer, E. Rhoades, Beranek, Gibson, Graetz, Anderson,
 Loneragan, Morse.



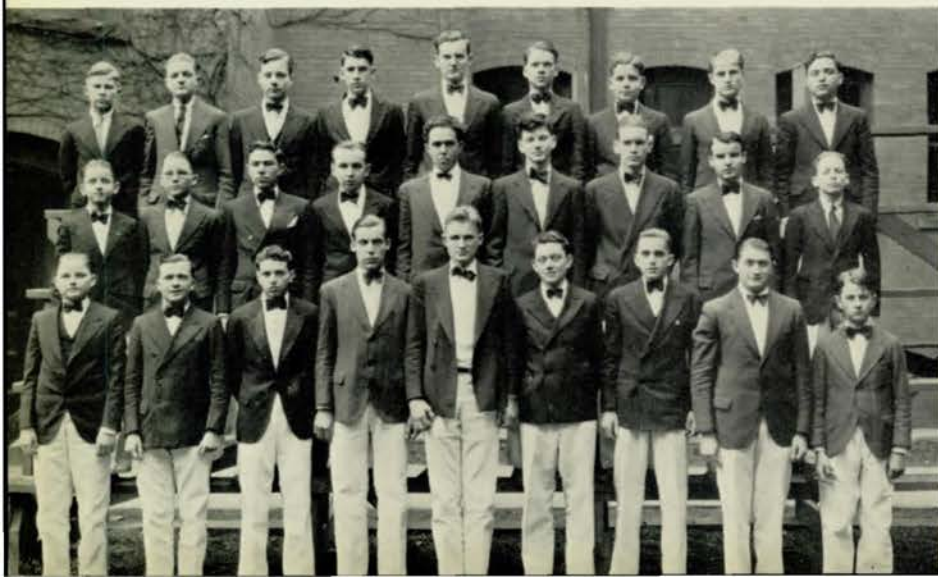


GIRLS' SENIOR GLEE CLUB

Backlund, Jackson, Kalcik, Ernst, See, Lininger, Welsh, Yates, Lischer, Woodford, Indoe, Scott,
 Nelson, Thorpe.
 MacNeill, Baldwin, Farber, Thompsen, Gerye, Fletcher, Deeter, Lindquist, Reinhardt, Barr, Paris,
 Abbott, Wigton.
 McCulley, Grady, Mock, Collins, Cohn, Shapiro, Gross, Miloni, Noxon, Hunting, Goldsmith, Mossman,
 Bowen.
 Goetz, Holman, Silverman, Burstein, Tuchman, Rhoades, Meyer, Mackley, Zook, Sherrig, Moon,
 Gilbert, Robertson.

BOYS' SENIOR GLEE CLUB

Johnson, Polyzois, Yeager, Hartung, Robinson, Goudy, Kaplan, Mossman, Laytin,
 Fry, Edwards, Nathan, Mowbray, Elson, Lustgarten, Larmon, Crawford, Wolfe,
 Hoefener, Tagg, P. Rushlau, Smith, Abarr, Frohardt, Duquette, J. Rushlau.





GIRLS' JUNIOR GLEE CLUB

Dent, M. Johnson, Schatz, N. Borly, Stuhr, Sothmann, M. Clark, D. Lonergan, Kingsley, Slabaugh, Rubendall, V. Austin.

Gee, Mobley, Hirs, Margolin, McGurruen, Otis, Quattrochi, Maher, Eck, Costanzo, Parks, Nanfito, Wood, Mahoney, Gordon, Hylen, Rohlf, Dimke, Friedman, K. Smith, Weiser, Hunter, Walsh, Fike, Byers, Gregory, Lee, Morearty, M. Henningson, Thomas, J. Anderson, Clucker, L. Wolfson, R. Wolfson, Moore, E. Anderson.

M. Ralston, Ashwood, J. Jones, Larson, Borman, Dansky, Beeson, Hoberman, L. Johnson, Ford, Schneider, Ellison, Blumkin.

GIRLS' JUNIOR GLEE CLUB

Hennings, Morse, Lerner, Anderson, Roberts, Speck, Dickerson, Fiala, Werner, Larson, McCaffrey, Ellison.

D'Andrea, Frohardt, Cochran, Pakes, Jackson, Hoening, Abbott, Hubbard, Pindecro, Vajgrt, Kipling, Campbell.

Vogel, J. Broad, Fore, Lacina, F. Broad, Wagner, Ackermann, Pohl, Moorman, Bickel, Arbitman, Smith, Skow, Yant, Robertson, Binkley, Knapp, Lee, Callan, Cameron, Swartzlander, Emmert, May, M. Horejs, A. Horejs, Fletcher, Gilinsky, Cathers, Kilbourn, Vlack, Corrington, M. J. Pratt, Hall, Rogers, Gerke.





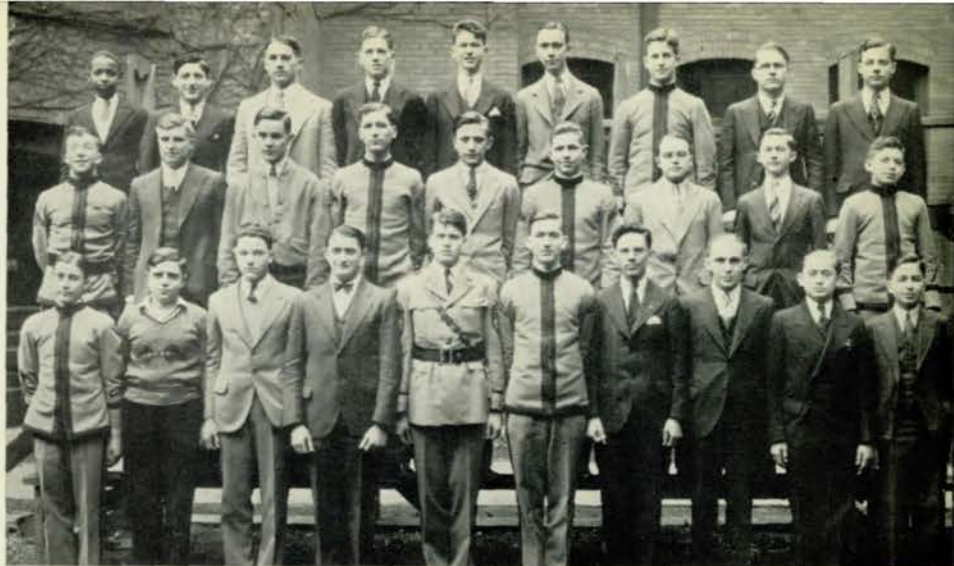
BOYS' JUNIOR GLEE CLUB

Rosenberg, Brodkey, Wendell, K. Wilson, Williamson, W. Wilson, Fisk, Kinman, Wade, Thomsen, Lofberg, Harris, Zoesch, Laverly, Holly, Elkins, Garcia, Reynolds, Moore, Hornstein, Field, O. Jones, McPherson, Knox, Shumow, Kraft, Hansen, Wezelman, Cohen, Crosby, Riseaman, Morse, McCune, Edgerley, Erickson, Gramly, Barr, T. Jones.

TITIAN CLUB

Wilcox, Goldsmith, Stone, Brott, Nolan, Pool, Maher, Lovell, Carter, Ashwood, Handley, Knapp, Allen, Zook, Frechin, Gilbert, Gee, Peake, Petersen, Whitebook, Ross, Byrd, Elliott, Bock, Fitch.





MATHEMATICS SOCIETY

Perkins, Mann, Egelston, Adams, Leitch, Shirk, Ogilvie, Zimmerman, Yeager,
 Holyoke, Trobough, J. Martin, A. Martin, Lee, Harrison, Kugler, Erickson, Reuben,
 Pilling, Weinstein, Ralya, Duquette, Rose, Hackler, Resnick, Laserowitz, Dansky, Freedman.

MATHEMATICS SOCIETY

Kirkpatrick, Dodds, Palmer, Holmstrom, Harrington, Auracher, Smith, Millman, Lerner,
 Bedell, Goldware, Heald, Eldridge, Harris, Welsh, Herron, Hansen, Wright,
 McDonald, McCreary, Crow, Silverman, Rhoades, Wood, Fisher, Marr, Oruch, Kirshenbaum.



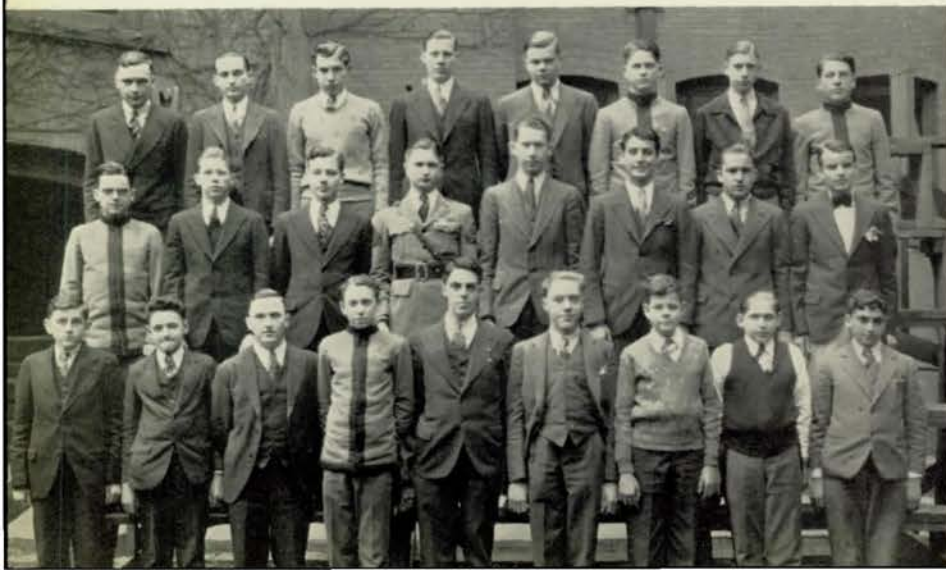


GIRLS' NATURAL SCIENCE CLUB

Horwitz, McGuire, B. Ross, Weaver, H. Amos, Moran, Bane, Biurvall, Buckland, I. Amos, Braude, Blaufuss, Gould, Perlis, Mullis, Bush, Baum, Green, Yant, Rogers, Farber, Millman, D'Andrea, Goodbinder, Patton, Huntington, Peterson, Duffield, Fisher, C. Ross, Byrd, Resnick, Ackerman, McMartin.

BIOLOGY ROUND TABLE

Ross, Tuchman, Guenther, Wagner, Carman, Osborne, Maxwell, Bernstein, Bowman, Bickel, Yeager, R. Brown, King, S. Brown, Encell, Crawford, Dergan, Lerner, Hornstein, Schapiro, Hoisington, Schneiderwind, Senter, Rosenbaum, Mittleman.





STUDENT CONTROL

Hunziker, Lovgren, Carp, Rose, Aitken, Guenther, Osborne, Lee, Goudy,
 Patterson, Herrick, Ernst, Johnson, Goodsell, Backstrom, V. Maxwell, Bickel, Butts, Erickson,
 F. Robertson, Crow, Baldwin, Wood, Moore, Scott, Dugan, Brown, C. Maxwell, Frankel,
 McDonald, Fore, M. Thorpe, B. Thorpe, Nelson, Nolan, Cochran, Runyan, Lascerowitz, Dansky.

STUDENT CONTROL

Kinman, Gunter, Flax, Fried, Carman, Wilson, Eddy, Nathan,
 Marr, Harris, Auracher, Ramsay, Ballbeck, Young, Copeland, Berner, Hall, Hoyt, Patterson,
 D'Andrea, Smith, Kirshenbaum, Berkowitz, Rosenfeld, Reilly, Barish, Smith, Dodds, M. Millman,
 G. Millman,
 Goldware, Burstein, Graetz, Peterson, Shaw, See, Marconnit, Bock, Heald, Horn, Slosburg.





CENTRAL COMMITTEE

Woodruff, Lindquist, Flax, Weber, Standeven, Sunderland, Buchanan, Fonda, Davis, Brown, Burke, Hoyt, Hall, Young, Humphrey, Walrath, Yant, D. Brown, Wacchter, Gordon, Travis, Wright, McCague, Thompson, E. Smith, Senez, Christopher, Indoc, Armstrong, Kilbourn, Hart, Mattes, Bliss, Goodbinder, Horwitz, Quick, E. Johnson, Kelly, Rhoades, Wilson, Schall, V. Gould, Rogers, Moore.

PROJECT COMMITTEE

Craig Clark, Gunter, Piccola, Lipari, Charles Clark, Boos, D. Frohardt, Bartos, Goetz, Hirs, Grobee, Link, Melcher, Dansky, Beeson, Kursawe, Baysdorfer.





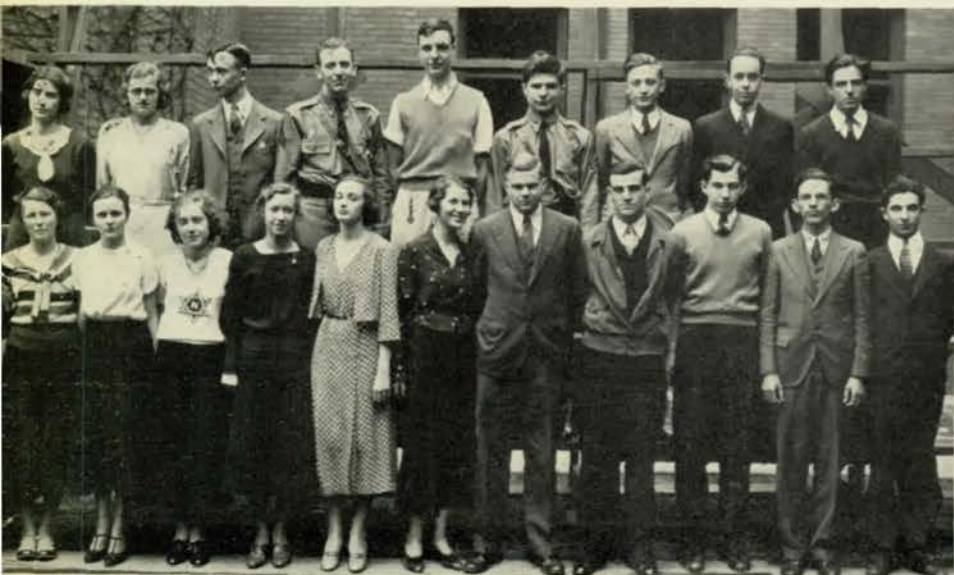
LATIN CLUB

Wigton, Dow, Sandall, V. Maxwell, Christopher, Carman, Saxe, Hayward, Mattes, Dansky, Kulakofsky, Friedel, McDonald, Bliss, Rosenfeld, Hansen, C. Maxwell, Snapp, Fisher, Lerner, Kenyon, C. Smith, Stein, Perlis, Westerfield, M. Smith, Herron, Peterson, Mullis, Goldware, Slosburg.

LOS SABIOS

Livermore, Condon, DeLong, Kent, Lloyd, Braig, Wiemer, Schroeder, Ward, Erickson, Bittner, Schneiderwind, Civin, Weiner, Alexander, Hackler, Lerner, Susman, Schall, Severinsen, Masters, Hirschmann, Locke, Clark, Zimmerman, Aulabaugh, Black, Wagstaffe, Elliott, Kinnard, Stuhr, MacNeill, Hart, Safersteen, E. Whitebook, Kilbourn, Wirt, Reynolds, Pehle, Wood, Kavan, Beranek, Vajgrt, Miloni, H. Whitebook, Woodruff, Fuqua, Mancuso.



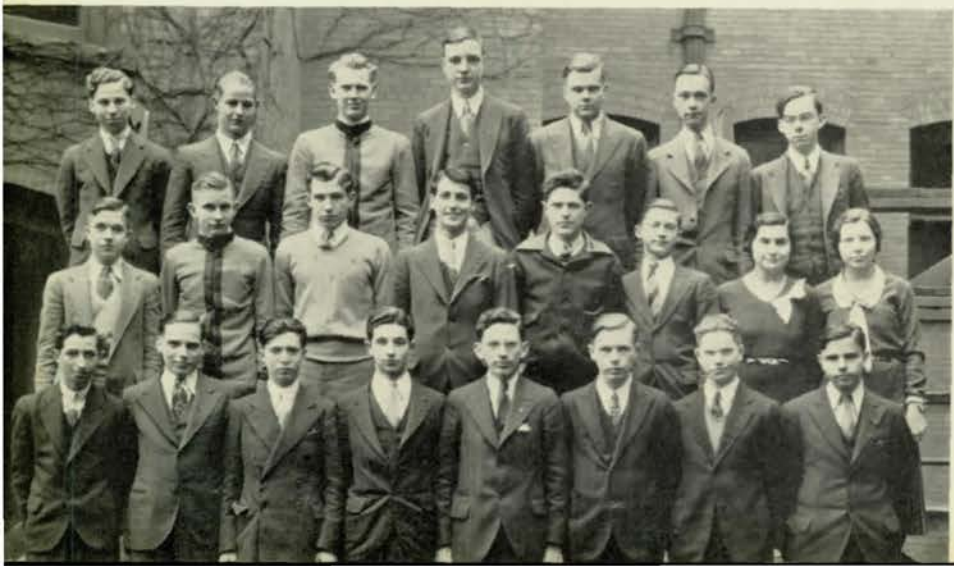


INTER-CLUB COUNCIL

Mullis, Hansen, Shirk, Elliott, Wagstaffe, Hunziker, Lee, Petersen, Williamson.
Byrd, Fore, Forehead, Finlayson, Wilson, Rhoades, Carman, Buell, Guenther, Resnick, Saxe.

DISCUSSION CLUB

Stiefler, Harris, Stevens, Wagstaffe, Carman, Shirk, Smith.
Hart, Snapp, Guenther, Brown, White, Erickson, Goldware, Handley.
Shrier, Rosenbaum, Frumkin, Saxe, Resnick, Dalby, Kort, Nathan.





DER DEUTSCHE VEREIN

Miller, Guenther, Rimerman, Musselman, Schonberger, Yeager.
 Weinstein, Hollcroft, Hoefener, Brown, Lee, Ross, Graham, Lazerson.
 N. Gross, Ortman, Collins, Wiesman, Dimke, Laserowitz, U. Gross.

BOOSTERS' CLUB

Weinstein, Tagg, Mowbray, Gunter, Howser, Wagner, Wilson, Kinman, Goudy, Cooper, Row.
 Berkowitz, Monsky, Ross, Long, Auracher, Fitz-Dowl, Bartos, B. Huseby, N. Huseby, V. Smith.
 Goldblatt, Slutsky, J. Smith, Allis, Petersen, Jorgensen, Wigton, F. Mossman, Marr, Rohlf.
 Goetz, Weinstein, Grobee, Beeson, Rhoades, Dansky, Marconnit, Miss Clark, M. Mossman, McCreary.





ATLAS CLUB

Miller, Marshall, Swanson, Hughes, Braun, Jones, Polcar.
 Holyoke, Cowdery, Loring, McIntyre, Caldwell, Thompson, Lee, Whitney.
 Senter, Braig, Baird, Wiemer, Williamson, Snapp, Rogers, Bushman.
 White, Troia, Hornstein, Taylor, Schneiderwind, Pilling, Kenny, Cohen.

GREENWICH VILLAGERS

Masters, Oehrle, Allen, Knudsen, Frohardt, Kreculov, D. Johnson, Schall, Buettenbach.
 Bexten, K. Kavan, Gaughran, Hess, Finlayson, Bock, Axtell, L. Johnson.
 Koory, Berkowitz, Wirts, B. Kavan, See, Vance, Senez, Wood, Walters.





FORENSIC SOCIETY

Dorinson, Smith, Flax, Koom, E. Rosenbaum, Shrier, Lazerson, Kirshenbaum,
 Carp, Durden, Kort, Holland, Stiefler, Cherniss, E. Silverman, Weiner,
 Hornstein, Diamond, Wintroub, D. Wagstaffe, Saxe, Frumkin, Perlis, Oruch,
 Miss Ryan, Finkel, Mittleman, W. Rosenbaum, Civin, F. Wagstaffe, Gross, Dolgoff, S. Silverman.

CENTRAL HIGH PLAYERS

Aulabaugh, Stearns, Ernst, Frankel, Harmon, Mossman, Maxwell, Musselman, Howser, Metzger,
 Hill, Ledyard,
 White, Moody, Ross, Christopher, Wilson, Pehle, Forbes, Kilbourn, Blixt, Long, Auracher, Weaver,
 Rohacek,
 Kulakofsky, Gee, Bauer, Epplen, O'Leary, Shaw, S. Brown, Smith, Corkin, Gerye, Lindquist, Johnson,
 Wigton, McCreary,
 Cathers, Anderson, Moore, Cote, Herrick, Rhoades, Gibson, Kvetensky, Rachman, Wentworth, Walrath,
 Brown, Wise, Bolen, Dergan.





ORCHESTRA

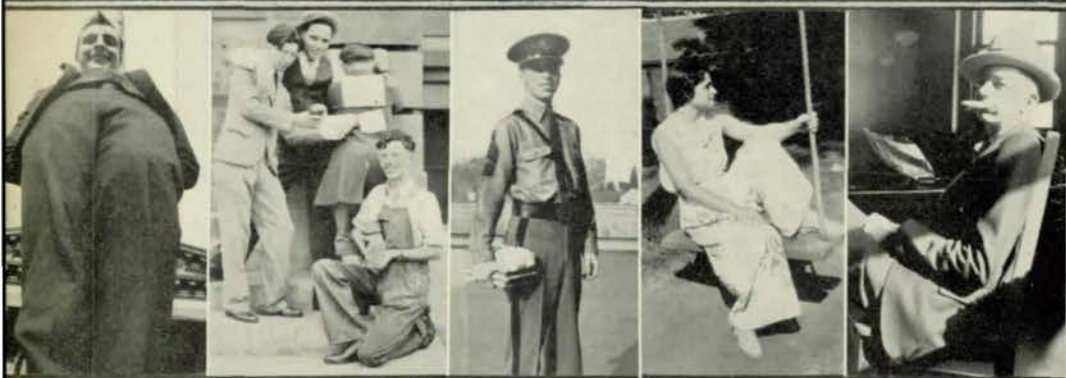
Bedell, Joe Hornstein, Peckham, Hollingworth, Nelson, Smith, Tuchman, Rowley, Jenness, Whitebook,
 P. Rushlau, Dergan, Finkel,
 Cohen, Bednar, Rees, Morton, Goethe, Julius Hornstein, Hill, Schneiderwind, Cajacob, Mollenhauer,
 J. Rushlau, Sherman,
 Parks, Piccola, Dodds, Antrim, Phillips, Quick, Nielsen, Willis, Fiedler, Waugh, Larson, Saylan,
 McCreary, Hassert, Harrington, Churchill, Christiansen, Sholes, Ewing, Scott, Northcutt, Miller,
 Burruss.

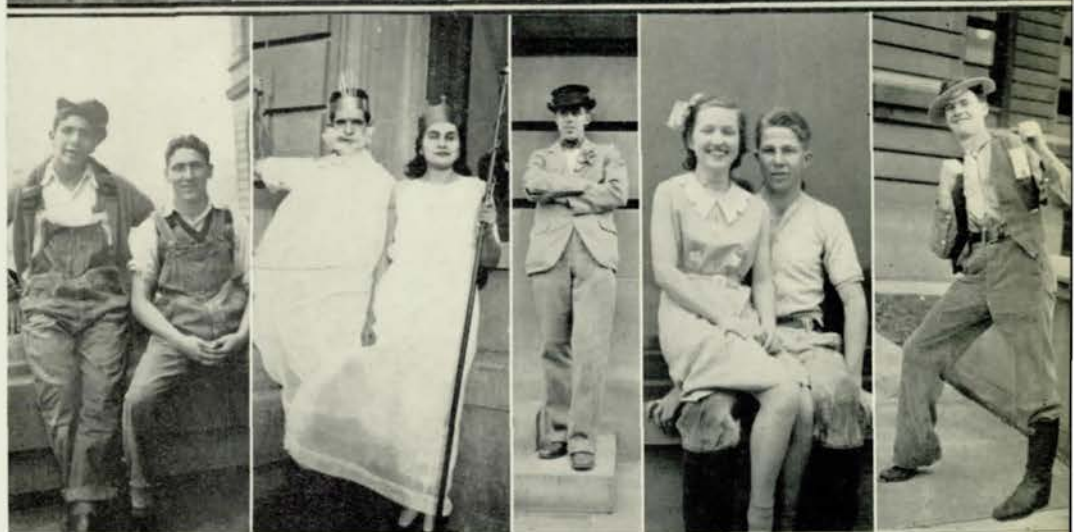
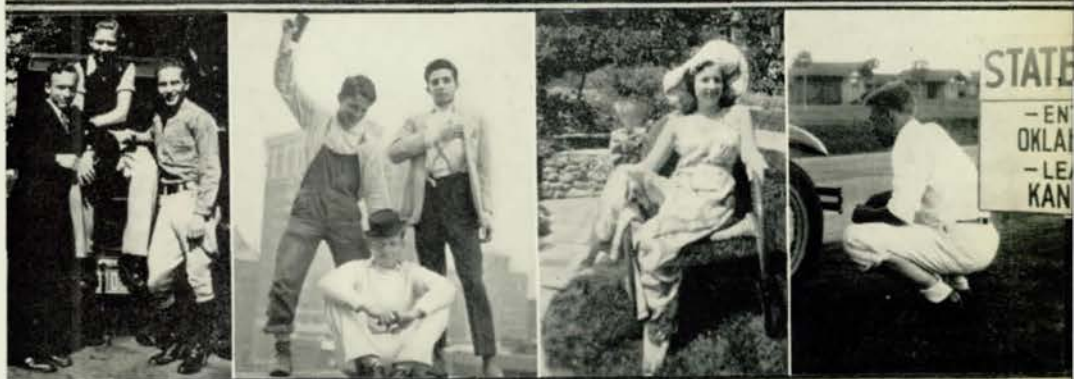
MAKE-UP CLASS

Stearns, Hamilton, Grupe, Ernst, Knowlton, Helgren, Van Dahl, Foley,
 Kirkpatrick, Wigton, Andersen, Hoefener, Barr, Shumaker, Pehle, Snyder, Rachman,
 Jacobow, Oehrle, Morrison, Bernstein, Anderson, Hunter, Shellberg, Keem, Jacobsen,
 Bauer, Hopkins, Jarmin, Myers, A. Pindeero, E. Pindeero, Thorpe, Corkin, Bolen, Carley.









AUTOGRAPHS



AUTOGRAPHS

AUTOGRAPHS

ACKNOWLEDGMENTS

SENIOR ART CLASS

RUTH ALLEN
MAE CHIN
HELEN CROW
MARIAN FINLAYSON

WILLIAM FLAX
HOMER FROHARDT
ALMIRA HESS
RUSSELL KRECULOV

ELIZABETH SHAW
HARRY WALSH
EVELYN WALTERS

ENGRAVING

BAKER BROTHERS

PHOTOGRAPHY

HEYN
BIHLER

PRINTING AND BINDING

DOUGLAS PRINTING COMPANY