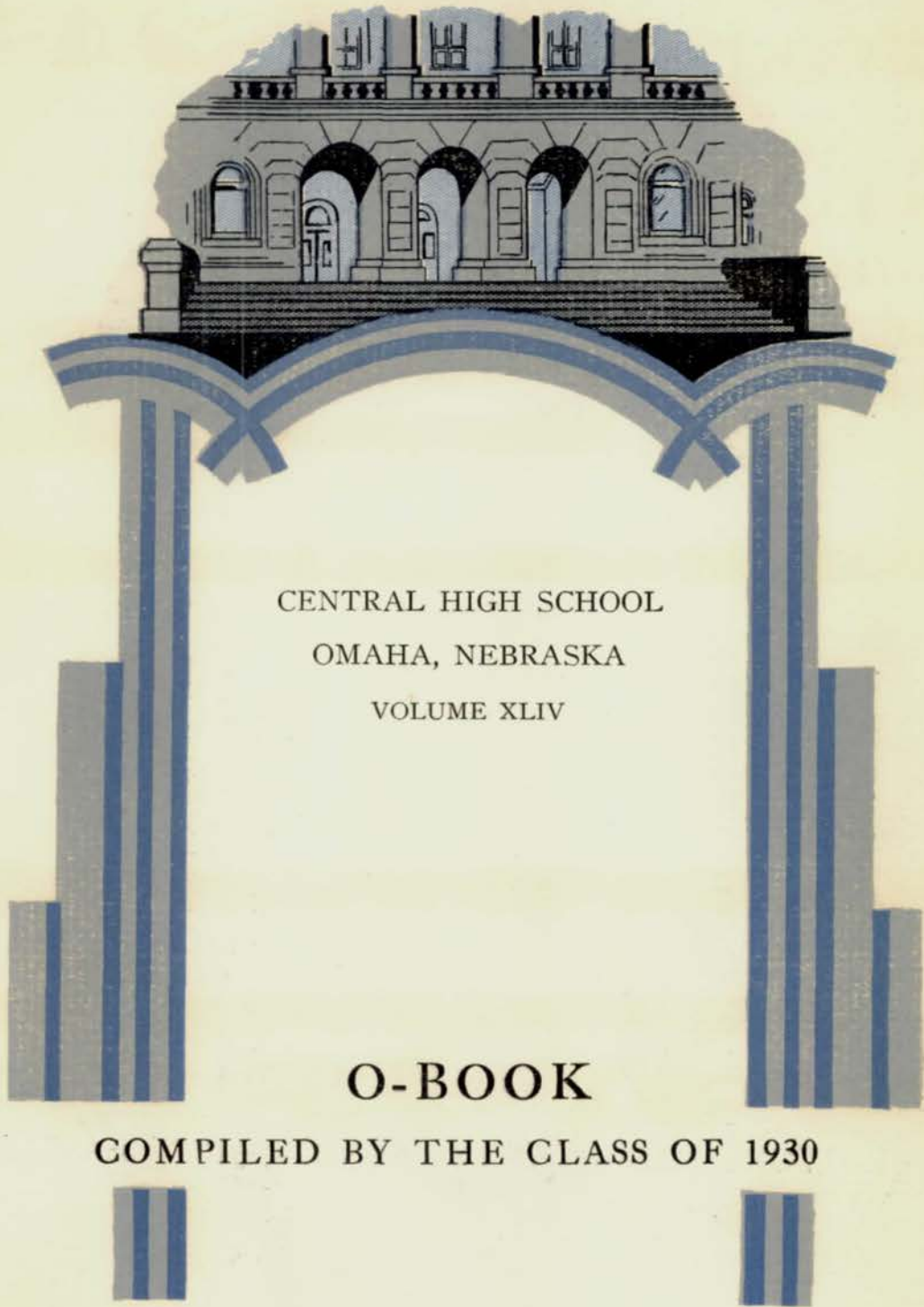


Book 60 - Book 60 - Book 60





CENTRAL HIGH SCHOOL
OMAHA, NEBRASKA
VOLUME XLIV

O-BOOK

COMPILED BY THE CLASS OF 1930



Editor-in-Chief

BARRETT HOLLISTER

Associate Editors

LUCILE LEHMANN

WILLIAM RAMSEY

HAROLD SAXE

Business Manager

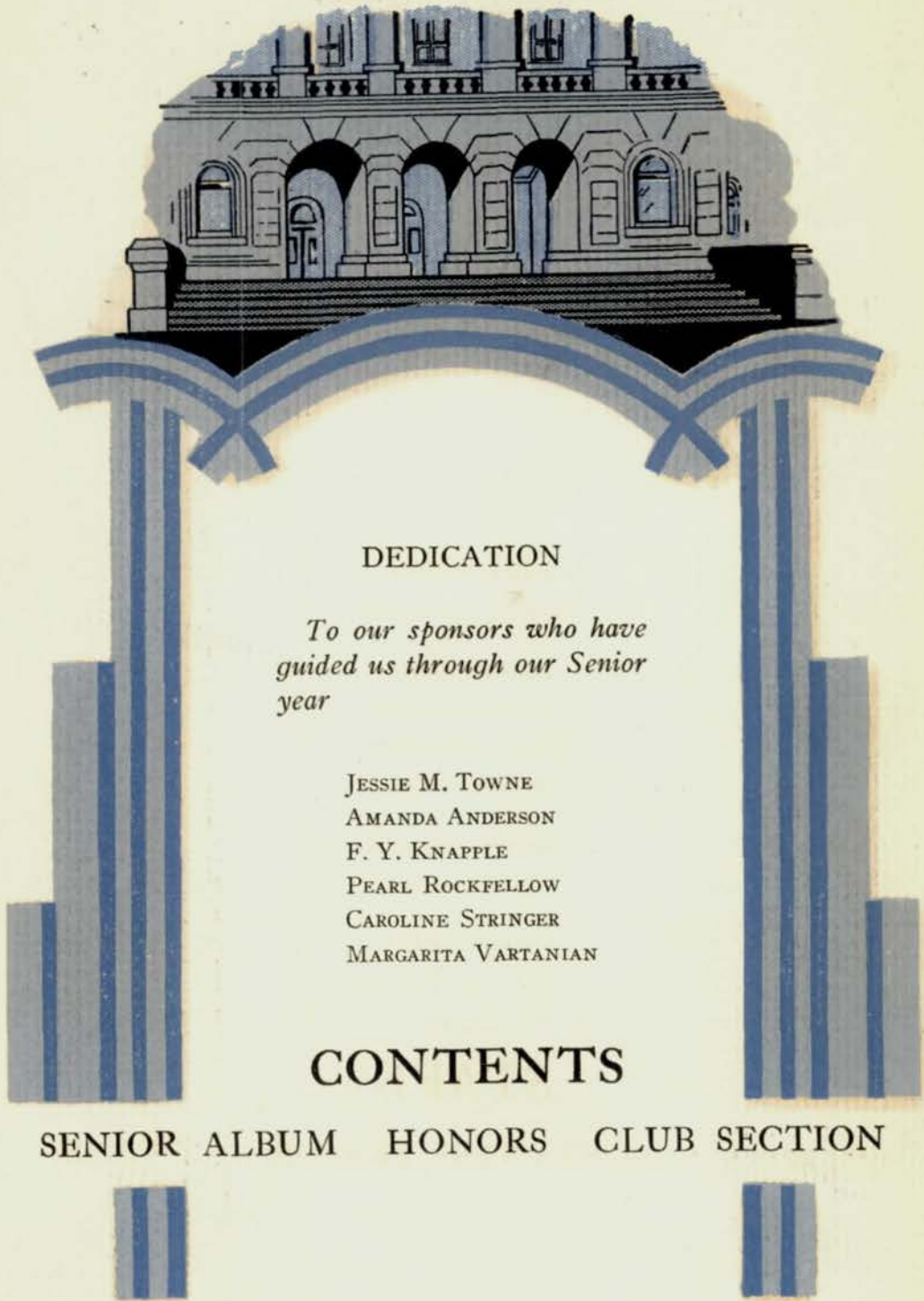
SOL TUCHMAN

Faculty Adviser

ANNE LANE SAVIDGE

STAFF

EDITORS ASSISTANTS SENIOR ART CLASS



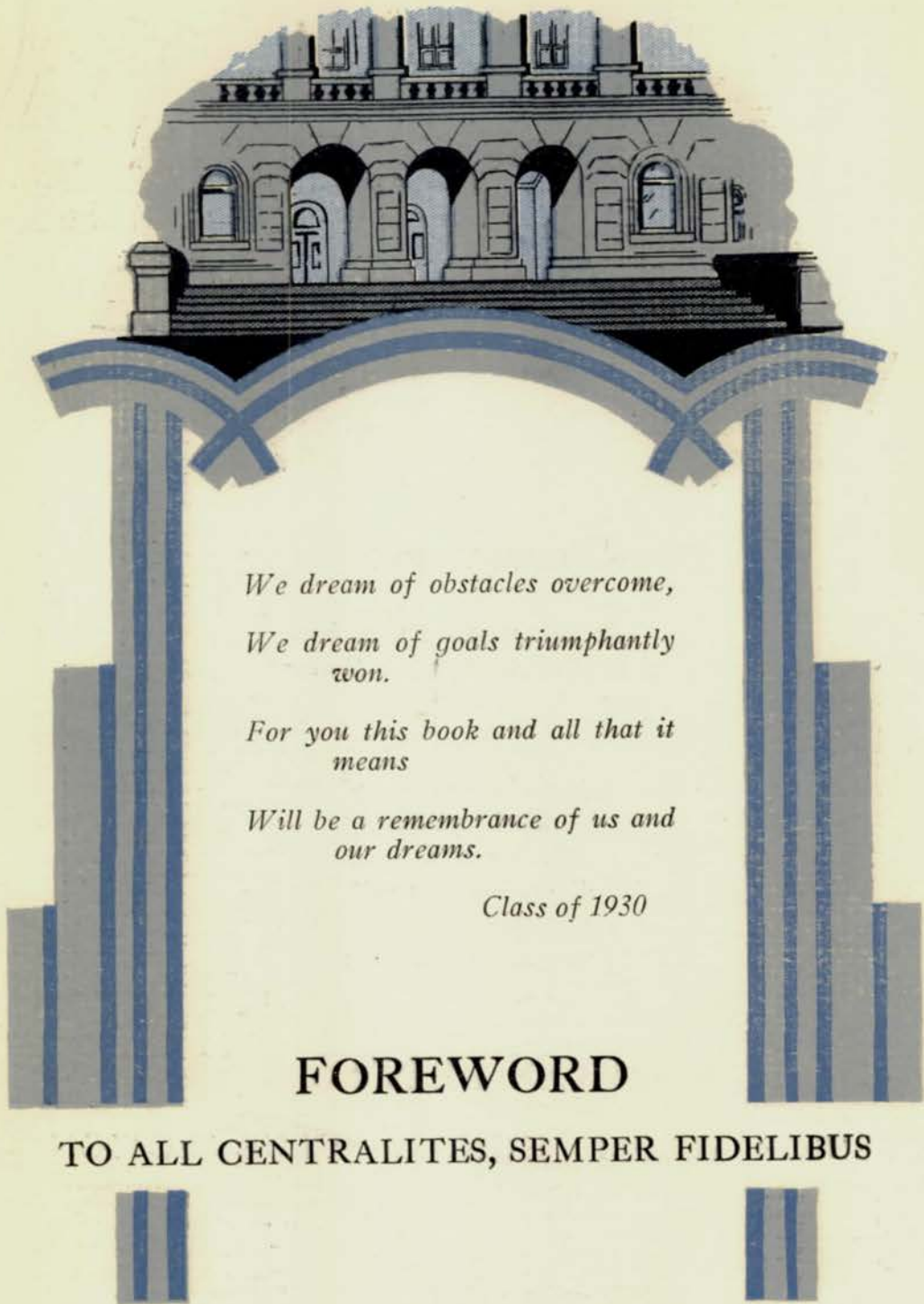
DEDICATION

*To our sponsors who have
guided us through our Senior
year*

JESSIE M. TOWNE
AMANDA ANDERSON
F. Y. KNAPPLE
PEARL ROCKFELLOW
CAROLINE STRINGER
MARGARITA VARTANIAN

CONTENTS

SENIOR ALBUM HONORS CLUB SECTION



*We dream of obstacles overcome,
We dream of goals triumphantly
won.*

*For you this book and all that it
means*

*Will be a remembrance of us and
our dreams.*

Class of 1930

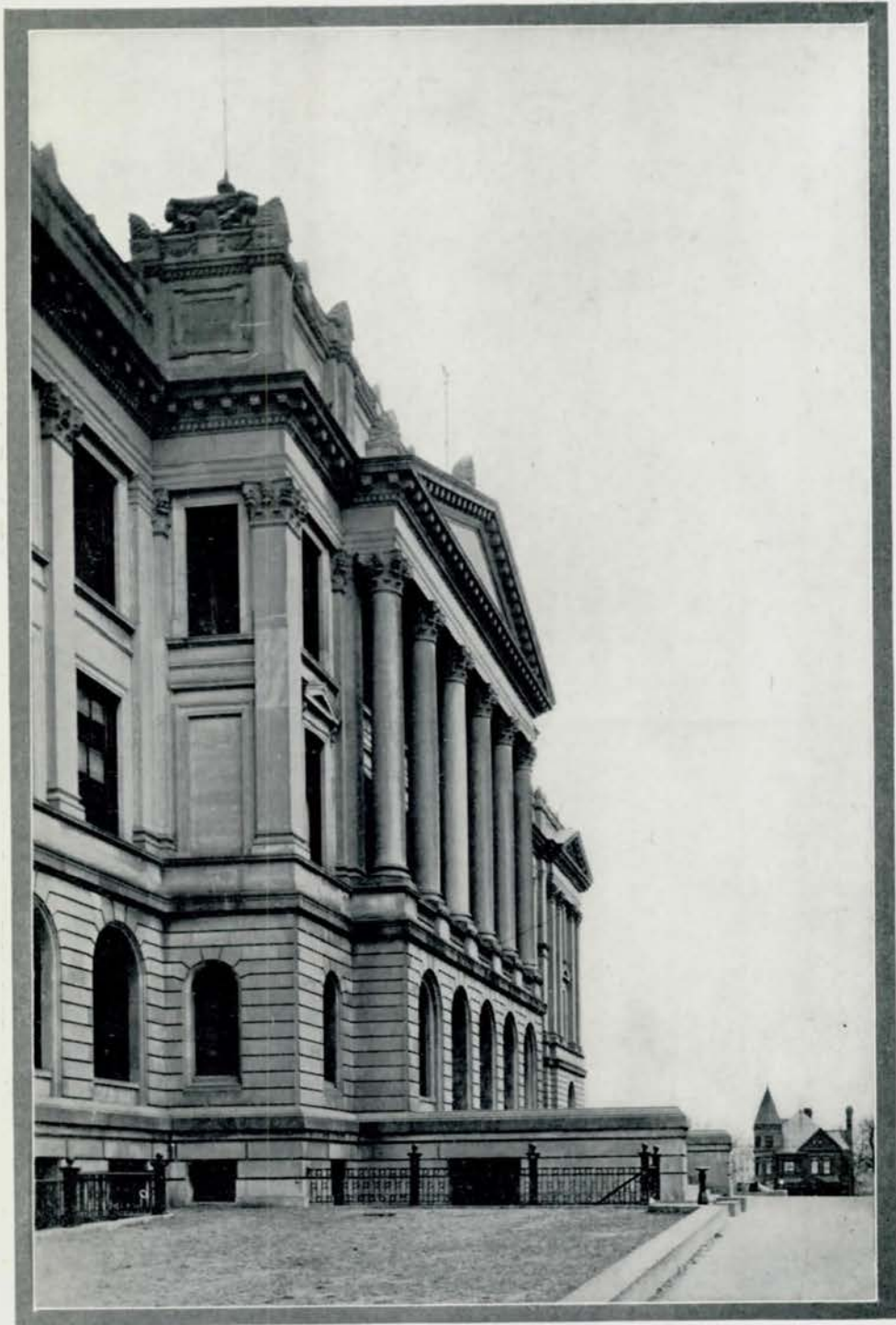
FOREWORD

TO ALL CENTRALITES, SEMPER FIDELIBUS



SOUTH ENTRANCE, CENTRAL HIGH SCHOOL





WEST ENTRANCE, CENTRAL HIGH SCHOOL



Portrait by

Angela's Studio, Omaha, Neb.

J. G. Masters



Central High Faculty

J. G. MASTERS

PRINCIPAL

JESSIE M. TOWNE

ASSISTANT PRINCIPAL

Dean of Girls

FRED HILL

ASSISTANT PRINCIPAL

Dean of Boys

ENGLISH

Sara Vore Taylor
Bertha Neale
Tillie C. Anderberry
Nell Bridenbaugh
Julia T. Carlson
Helen G. Clarke
Bessie M. Fry
Grace Gilbert
Grace Holmes McManus
Margaret Mueller
Penelope Smith
Helen Sommer
Louise Stegner
Martina Swenson
Jessie M. Towne
Ida Ward
Alice West

MATHEMATICS

Andrew Nelsen
Amanda E. Anderson
G. E. Barnhill
R. B. Bedell
L. N. Bexten
Maybel Burns
Grace Fawthrop
Anna Porter Haynes
Pearl Judkins
Sarah Ryan

HISTORY

Geneive W. Clark
Irma Costello
Mary E. Elliott
Edith C. Field
Elsie Fisher
Juliette Griffin
Elizabeth Kiewit
Mary A. Parker
Nelle Randall

MODERN LANGUAGES

Bess Bozell
Barbara Chatelain
Eva M. Erixon
Ella L. Phelps
Pearl Rockfellow
Marie L. Schmidt
Margarita Vartanian

ANCIENT LANGUAGES

Elizabeth Craven
May L. Copeland
Bernice S. Engle
Annie C. Fry
Jane T. Fulton
Bessie Shackell

PHYSICAL SCIENCE

F. H. Gulgard
J. G. Schmidt
H. A. Senter

NATURAL SCIENCE

Caroline E. Stringer
Jennie Hultman
Helen Lane
Helen M. Scott

SOCIAL SCIENCE

Autumn Davies
F. Y. Knapple

COMMERCIAL

Edna S. Dana
Grace Knott
J. W. Lampman
Harriet Rymer
Angeline Tauchen

HOUSEHOLD ARTS

Chloe E. Stockard
Marian Morrissey

MUSIC

Carol Marhoff Pitts
Irene Haskins Jensen
Elsie Howe Swanson
Henry G. Cox

PHYSICAL TRAINING

Glee Gardner Case
Elinor Bennett

EXPRESSION

Floy Smith
Myrna Vance Jones
Dorothy Sprague Beal

LIBRARY

Zora Shields
C. S. Blanchard
Hazel Crandall
A. A. Egbert

MECHANICAL ARTS

O. J. Franklin
H. R. Jacobs
J. J. Kerrigan

ART

Mary Angood

JOURNALISM

Anne Lane Savidge

OFFICE

Bessie Gallagher
Isabelle Neumann
Jennie Roberts

REGISTRAR

Adrian Westberg

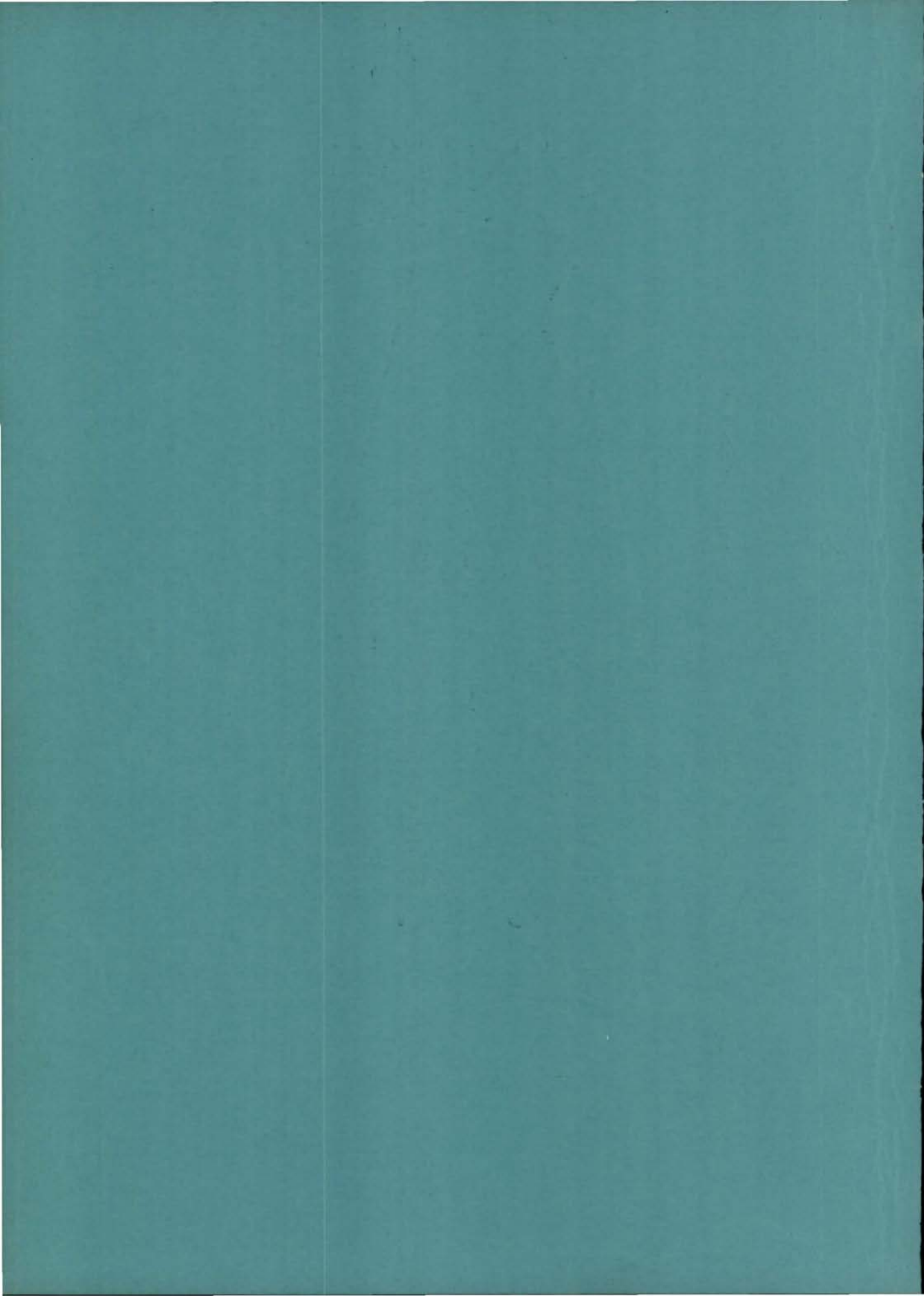
CLERK OF BOOKROOM

Pauline Hartnett

SWIMMING

Edward Burdick





FRANCES BARTH

President, January

Student Control (3); Le Cercle Francais (3,4); Natural Science Club (2,3,4); Central High Players (3,4); Junior Orchestra (1,2); Library Monitor (3,4).

Her quiet poise and self-possession are the envy of many.

HARLAND L. MOSSMAN

Vice-President, January

Spanish Club (1); Stamp Club (1).

Shy, retired, and intelligent.

ERNEST BONACCI

Secretary, January

Register Staff (4); Senior Book Staff, editor (4); Gentlemen's French Club (4); Boys' Senior Glee Club (4); Boys' Junior Glee Club (3); Natural Science Club (2,3); Opera (4); Regiment (1,2,3,4); Library Monitor (4).

An all-around favorite wherever he is.

HARRY EVANS

Treasurer, January

Spanish Club (3,4); Central High Players (3); Regiment (1,2,3); Band (2,3); Football (1).

The answer to a maiden's prayer.

FLOYD ABBOTT

Cadet Officers' Club (4); Regiment (1,2,3,4), Second Lieutenant (4); Color Day Committee (3).

His curly red hair flashes just like his smile.



MAC COLLINS

National Honor Society

President, June

Mathematics Club (4); Central Committee (4); Gentlemen's French Club (4); Inter-Club Council (4); Student Control (3,4), President (4); Speakers' Bureau (4); Natural Science (2); Monitor (4); Football (3); Junior Honor Society (2,3); State Scholarship Contest (2); French Play (4).

The much-desired assets of a brilliant mind and a sharp wit are combined in our president.

BARRETT HOLLISTER

National Honor Society

Vice-President, June

O-Book, Editor-in-Chief (4); Mathematics Club (1,3,4), Vice-President (3), President (4); Stamp Club (2,3), Vice-President (3); Inter-Club Council (3,4); Speakers' Bureau (1,2,4); Natural Science Club (3); Cadet Officers' Club (4); Regiment (1,2,3,4), First Lieutenant (4); Color Day Committee (4); Monitor (4); Junior Honor Society (1,2,3).

Whatever he enters is benefited by his diligence and effort.

MADELINE JOHNSON

National Honor Society

Secretary, June

Register Staff, Associate Editor (4); O-Book Staff (4); Quill and Scroll (4); Mathematics Society (3); Central Committee (3,4), Sergeant-at-Arms (3); Central Colleens (1,2); Girls' Senior Glee Club (3); Girls' Junior Glee Club (3); Speakers' Bureau (1,2), Vice-President (4); Sergeant-at-Arms (3); Central High Players (4); French Play (3); Student Association, Secretary (4); Monitor (4); Junior Honor Society (1,2); State Scholarship Contest (1).

Madeline is an "A" student of rare charm and personality.

MILTON J. MANSFIELD

Treasurer, June

Purple Legion (3,4); Central Committee (4); Student Control (3,4); Natural Science (2); Cadet Officers' Club (4); Hi-Y (2,3,4); Road Show (3,4); Latin Play (2); Regiment (1,2,3,4), Captain Band (4); Orchestra (1).

Quite the ladies' man!

MARIAN DUVE

National Honor Society

Reporter, June

O-Book Staff (4); Register Staff (3,4); Liminger Travel Club (3,4); Monitors' Council, President (4); Student Control (3,4); Girls' Junior Glee Club (2); Natural Science (2); Central High Players (3); Stage Art (3); Monitor (4); Junior Honor Society (1,3); Quill and Scroll (3,4).

Jokester extraordinary—nuf said.

ALLAN DAVIS

National Honor Society

Sergeant-at-Arms, June

Purple Legion (3,4); Student Control (3); Boys' Senior Glee Club (1, 2,3,4); Speakers' Bureau (2); Cadet Officers' Club (4); Hi-Y (1,2,3, 4); Opera (3); Road Show (3,4); Regiment (1,2,3,4), Captain (4); Crack Squad (3); Crack Platoon (3); Class Vice-President (3); Junior Honor Society (2,3); District Music Supervisors' Convention (3).

"Al's" secret of popularity and success is his sincerity in everything he undertakes.

BETTY ADAMS

O-Book Staff (4); Register Staff (4); Purple and White Handbook Staff (4); Central Colleens (3,4); Girls' Senior Glee Club (3,4); Sergeant-at-Arms (4); Girls' Junior Glee Club (2); Natural Science Club (2); Library Monitor (4); Junior Honor Society (3); Quill and Scroll (4); National Music Supervisors' Convention (4); District Music Supervisors' Convention (3).

Her pleasing smile and friendly manner have won her many friends.

MILTON ALTSULER

Register Staff (4); German Club (2,3); Boys' O-Club (3,4); Regiment (2,3); Chorus (3); Track (2,3); Basketball (2,3,4); Football (1,2,3,4); Athletic Manager (3).

A star as a football player, a basketball player, and a lady-killer.

BETTY ANDERSON

Spanish Club (3,4); Central Colleens (1,2,3); Student Control (4); Girls' Junior Glee Club (2); Gym Club (2,3,4); Girls' Athletic Association (4); Pageant (4); Road Show (3); Library Monitor (4); Baseball (1,2,3,4); Swimming (3,4); Tennis (2,3,4); Golf (3,4); Basketball (1,2); Hockey (1,2); Volleyball (1,2,3).

She is a good sport, a helpful friend—well worth remembering.

NAOMI ANDERSON

Central Colleens (3,4).

Her silent influence is a great factor of her life.



ELIZABETH FOLTZ

Sergeant-at-Arms, June

Central Committee (2,3,4); Gym Club (1,2,3), Treasurer (3); Central High Players (4), Secretary (4).

Cute, winsome, darling "Bee."

JANE APPLEMAN

Her big, pleading eyes invite friendship and confidence.

IONE ASHWOOD

(September)

Library Monitor (4); Spanish Club (4); Central Colleens (2,3).

A likeable blonde with an excess of good nature.

WILLIAM AUSTIN

Register Staff (4); Natural Science Club (2); Central High Players (4); Regiment (1,2); Track (3); Football (3,4); Senior Play (4).

Bill is a fine fellow and very versatile as shown by his activities.

LOUIS BABIOR

Monitor (4); German Club (2); Regiment (1,2).

Is he a ladies' man? And how!

VANCE BAIRD

National Honor Society

Mathematics Club (3,4), Vice-President (4); Student Control (4); Boys' Senior Glee Club (4); Boys' Junior Glee Club (3); Regiment (1, 2); Junior Honor Society (2).

Steadfast and earnest, and a whiz at Math.

WILLIAM BAIRD

National Honor Society

Purple Legion (2,3,4), Secretary (3); Gentlemen's French Club (4); Student Control (3,4); Boys' O-Club (3,4); Natural Science Club (2); Cadet Officers' Club (4); Hi-Y (1, 2, 3, 4), Treasurer (2), President (4); Regiment (1,2,3,4), Major Second Battalion (4); Crack Platoon (2); Class President (2); Basketball (1,2,3,4), Captain (4); Cheerleader (2,3); Junior Honor Society (1,3), Vice-President (1); National Athletic Honor Society (3).

A leader in all his activities, popular, a good scholar—Bill has attained what most students only strive for.

EDWARD BARAKAT

Weekly Register Staff (4); O-Book Staff, January Editor (4); Gentlemen's French Club (4); Boys' Junior Glee Club (3,4); Natural Science Club (2,3); Regiment (1,2,3,4); Library Monitor (4).

He has the faculty for making good grades and friends.

DOROTHY BARBER

National Honor Society

Lining Travel Club (3,4); Monitors' Council (4); Central Colleens (3,4); Student Control (3,4); Natural Science, President (4); Le Cercle Francais (4); Monitor (4); Junior Honor Society (1,2).

An efficient and studious nature is hers.

MARIE BAROCH

German Club (4); Central Colleens (4); Student Control (4).

A sweet, winning, and exceedingly likeable girl.



JAMES BARTOS

Register Staff (4); Purple and White Handbook Staff (4); Student Control (4); Boys' Junior Glee Club (4); Central High Players (4); Regiment (1,2,3,4), Corporal (3), Sergeant (4); Stage Art (4); Chorus (4).

Everybody likes Jim, although he has a passion for playing pranks on everyone.

GERALD BAYSDORFER

Boys' Senior Glee Club (3); Boys' O-Club (3,4); Business Club (2); Central High Players (4); Opera (3); Regiment (1,2,3); Stage Art (4); Chorus (1,2,3); Football (2,3); National Athletic Society (4).

Jerry's weaknesses tend to athletics and music, very admirable weaknesses.

FRANCES BEALL

Orchestra (1,2,3,4); District Music Supervisors' Convention (3); Girls' Senior Glee Club (2,3,4); Opera (3, 4); Road Show (3).

A pianist to her very fingertips.

JACK BEATON

Regiment (1,2).

Seldom heard, but listened to when he speaks.

MARJORIE BEAUCHESNE

Central Committee (3,4), Treasurer (4); Greenwich Villagers (3,4); Speakers' Bureau (3,4), Sergeant-at-Arms (4); Le Cercle Francais (2,3, 4), Vice-President (3); Central High Players (4); Gym Pageant (1); French Play (2,3); Library Monitor (4).

Her winsome, charming smile attracts like a magnet.

VOIMIR BELDA

Boys' Junior Glee Club (1,2); Regiment (1,2,3,4).

Voimir's carefree nonchalance and optimism are outstanding.

MARGARET BELL

Volley Ball (2).

Industrious, smiling, and ever helpful.

ISRAEL E. BERCOVICI

Mathematics Society (3,4); Boys' Senior Glee Club (4); Boys' Junior Glee Club (3); Speakers' Bureau (2,3); Junior Honor Society (2); Regiment (1,2).

Israel Ephraim should continue as a short story writer—his talent is well known.

CLARETTA BIDDIE

Girls' Junior Glee Club (2); Natural Science Club (3).

Surrounded by an air of charm and reserve.

NADINE BLACKBURN

Greenwich Villagers (3,4); Girls' Senior Glee Club (2,3); Natural Science (2,3); Le Cercle Francais (2,3); Chorus (3).

She's as sweet as she is pretty.



WILLIAM BLEDSOE

O-Book Staff (4); German Club (3); Mathematics Club (3); Boys' O-Club (3,4); Cadet Officers' Club (4); Latin Play (4); Regiment (1,2,3,4), First Lieutenant (4); Swimming (3); Track (3); Football (3,4).

Our circulation manager—to whom we are much indebted.

RODNEY BLISS

Purple Legion (2,3,4), President (4); Gentlemen's French Club (4); Boys' O-Club (1,2,3,4); Natural Science Club (2); Cadet Officers' Club, Vice-President (4); Hi-Y (1,2,3,4), Vice-President (3,4); Latin Play (1); Regiment (1,2,3,4), Captain (4); Crack Platoon (2); Class Vice-President (2); Golf (1,2,3,4); Basketball (1,2,3).

Bring Central's Bobby Jones does not keep him from being a student and capable officer in the regiment.

HELEN BOGARD

Greenwich Villagers (3,4); Central Colleens (1); Natural Science (2); Monitor (4).

One of Central's most earnest artists.

JANE BOWMAN

Central Colleens (1,2,3,4); Central High Players (4); Road Show (3).

Dainty and neat, small and sweet—that's Jane.

HOWLAND BOYER

Road Show (4); Regiment (1,2,3,4), Corporal (4); Stage Crew (2); Stage Art (2); Football (4).

Chief motion-maker in senior home room—but his motions show thought and intelligence.

MARIAN BRADLEY

O-Book Staff (4); Purple and White Handbook Staff (4); Monitors' Council (4); Central Colleens (1,2); Student Control (4); Natural Science (2,3); Girl Reserves (2,3); Stage Art (3); Monitor (4); Quill and Scroll (4).

Marian is always smiling and ready for fun.

IRWIN BRENNER

Boys' Senior Glee Club (4); Boys' Junior Glee Club (4); Opera, Costume Master (4); Road Show Costume Master (4).

He will be missed as an able costume master.

JAYNE BRENNER

Road Show (4).

Central's "boop boop a doop" girl.

WINIFRED BRIGGS

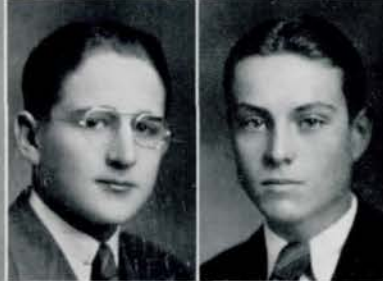
Student Control (3,4); Girls' Senior Glee Club (2,3,4); Girls' Junior Glee Club, Vice-President (2); Opera (2,3,4); Monitor (4).

Ever merry and gay with loads of pep.

EDWIN E. BRODKEY

Debate Club (3,4), Secretary (3), Vice-President (4); Monitors' Council (4); Student Control (3,4); Natural Science (3); Central High Players (3); Monitor (4); Junior Honor Society (3); Regiment (1,2,3,4), Corporal (4).

Always there on the job—a real go-getter.



HAROLD BRODKEY

Register Staff (4); Debate Club (4); Speakers' Bureau (2,3,4); Cadet Officers' Club (4); Central High Players (2,3,4); Regiment (1,2,3,4), Second Lieutenant (4).

Who can resist that enchanting smile?

SARA BROWN

Natural Science (2); Color Day Committee (2); Volley Ball (1,2).

Sara just radiates friendliness and cheer.

MARGARET BROWNE

Monitor (4); Lininger Travel Club (4); Central Colleens (2,3,4); Girls' Senior Glee Club (3,4); Girls' Junior Glee Club (2); Register Staff (4); Quill and Scroll (4).

A remarkable pupil with a delightfully keen sense of humor.

JAMES BUFFINGTON

Boys' Junior Glee Club (1); Football (1).

Jim has a fondness for bright colors as exhibited by his "Rolls-Ruff."

FRANCIS BYRON

National Honor Society

Central Committee (4); Boys' Junior Glee Club (1); Speakers' Bureau (1,2,3,4); Cadet Officers' Club (4); Hi-Y (1,2,3,4); Road Show (4); Regiment (1,2,3,4), Captain Quartermaster (4); Student Association, Advertising Manager (4); Junior Honor Society (2,3).

"Xerxes" accomplishes much in his quiet way.

ALICE JEAN CAREY

O-Book Staff (4); Natural Science (2); Central High Players (3,4).

Alice Jean's demure exterior hides a fun-loving and jolly heart.

PAUL CARMAN

National Honor Society

Register Staff (4); Debate Club (4); Natural Science Club (2); Hi-Y (3); Regiment (1,2); Junior Honor Society (1); State Scholarship Contest (2); Quill and Scroll (4).

He finds his purpose and carries it out.

EUGENE CARRIGAN

Spanish Club (3); Stamp Club (2); Sergeant-at-Arms (3); Boys' Junior Club Club (2); Cadet Officers' Club (4); Hi-Y (1,2,3,4); Regiment (1,2,3,4), Second Lieutenant (4); Stage Crew (4); Baseball (1,2,3); Track (4); Basketball (1,2,3,4); Assistant Track Manager (4).

A real athlete—and always boosting for his school.

WILMA CARTER

Register Staff (4); Central Colleens (2,3,4); Natural Science (3,4); Library Monitor (4); Quill and Scroll (4).

She has a friendly word for all she meets.

RUTH CHADWELL

National Honor Society

Register Staff (4); Central Colleens (2,4); Student Control (4); Girls' Athletic Association (3,4); Monitor (4); Baseball (1,2,3,4); Basketball (1,2,3,4); Junior Honor Society (1,2).

One of Central's best girl athletes.



EVELYN CHAIKIN

Register Staff, Advertising Solicitor (2,3); Advertising Manager (4); Stage Art (4); Library Monitor (4); Senior Book Staff, Assistant Advertising Manager (3); O-Book Staff (2); French Club (2).

A most industrious worker.

HENRY CHAIT

National Honor Society

Register Staff, Assistant Editor (4); German Club (4); Regiment, Private (1,3); Orchestra (1,3,4), President (4); Monitor (4); Junior Honor Society (1,3); Quill and Scroll (4).

His ambitious nature will carry him far.

GRACE CHALOUKKA

Spanish Club (4); Volley Ball (1,2); Junior Honor Society (1,2).

Grace is the very essence of amiability.

HELEN CHAPMAN

Student Control (4); Central High Players (4); Monitor (4); Junior Honor Society (3).

We all like Helen because she is so sweet and gracious in all she does.

DONALD CHEFF

Mathematics Club (3,4), President (4); Gentlemen's French Club (4); Inter-Club Council, Secretary-Treasurer (4); Natural Science (2); Cadet Officers' Club (4); Hi-Y (2,3); Road Show (4); Regiment (1,2,3,4), Second Lieutenant (4); Color Day Committee (4).

A good leader with a capacity for fun, although a bit reserved.

CLYDE CISELL

Purple and White Handbook (4); Boys' Senior Glee Club (3,4); Boys' Junior Glee Club (2); Opera (4); Road Show (4); Track (3,4).

One of "Papa" Schmidt's track blisters.

RUTH CLAASSEN

Mathematics Club (2); Central Committee (3,4); Central Colleens (1,2,3); Natural Science (2); Le Cercle Francais (4), Treasurer (4); Class Sergeant-at-Arms (3); Library Monitor (4).

The secret of her popularity is her breezy, friendly attitude to all.

JOHN CLAPPER

Spanish Club, Secretary-Treasurer (2), Vice-President (3), President (3); Sergeant-at-Arms (4); Central Committee (4); Inter-Club Council (3); Student Control (3); Natural Science (1); Hi-Y (2,3,4); Road Show (3); Regiment (1,2,3); Football (1,2); O-Book Advertising Staff (4).

Clapper rhymes with dapper—'nuf said.

MARY JEAN CLAPPER

Spanish Club (4); Central Colleens (1,2,3,4); Student Control (3,4); Girls' Senior Glee Club (3,4); Girls' Junior Glee Club (1,2); Opera (4); Monitor (4).

Of tall and stately mien.

JANET C. CLARK

Janet is quiet and calm, but ever so obliging.



JEANETTE CLARK

Student Control (3,4); Girls' Senior Glee Club (3,4); Girls' Junior Glee Club (2,3); Opera (4); Assistant Costume Mistress (3); Road Show (3); Monitor (4).

Her blonde beauty and carefree ways have won her many friends.

HELEN CLARKSON

German Club (3,4), Sergeant-at-Arms (4); Central Colleens (1,2,3,4); Library Monitor (4); Junior Honor Society (1).

Diligence and sincerity make Helen a scholastic leader.

RUTH COHEN

National Honor Society

Library Monitor (4); Junior Honor Society (3); Quill and Scroll (4); O-Book Staff, Chairman of Activities Committee (4); Lininger Travel Club (3); Central Colleens (3,4); Girls' Junior Glee Club (1,2); Le Cercle Francais, Sergeant-at-Arms (3); Girl Reserves (1); Opera, Publicity Manager (4); Weekly Register Staff, Reporter (4); Purple and White Handbook, Editor (4).

Bubbling over with humor and fun.

JACK COMPTON

Natural Science (2); Central High Players (3); French Play (3); Regiment (1,2,3,4), Corporal (4); Gentlemen's French Club, Sergeant-at-Arms (4).

Conscientious and striving to please all.

LOUISE CONDON

Le Cercle Francais (4); Library Monitor (4).

She leaves a trail of broken hearts behind her.

WASHINGTON CONN

Stage Art (3).

He enjoys and makes everyone else enjoy his flibustering in classes.

LAWRENCE COOKE

Register Staff (4); Hi-Y (1,2); Regiment (1,2,3,4), Second Lieutenant and Quartermaster (4); Basketball (3); Gentlemen's French Club (4).

"Lawrie" is very obliging and very quiet, but what a smile!

MARJORIE COOPER

(September)

Spanish Club (2,3,4); Central Committee (2,3,4), Vice-President (3,4); Girls' Junior Glee Club (2,3), President (2); Speakers' Bureau (1,2,3), Sergeant-at-Arms (2); Central High Players (2,3,4); Girl Reserves (1,2,3,4); Latin Play (1); "Thirteenth Chair" (2); Secretary Junior Class (3); Junior Honor Society (2).

There are no words adequate to describe her charm and loveliness.

HELEN CRAIG

Titians (1,2,3,4), Head Usher (4); Girls' Senior Glee Club (4); Girls' Junior Glee Club (3); Gym Club (2,3,4), Sergeant-at-Arms (3), Treasurer (4); Natural Science (2); Le Cercle Francais (2,3); Opera (1,4); Road Show (2,3); French Play (3); Library Monitor (4).

A titian of dancing fame.

DARRELL CURNES

Darrell's unobtrusive helpfulness is always welcome.



PEARL DANSKY

National Honor Society

O-Book Staff (4); Register Staff, Copy Reader (4); Purple and White Handbook, Editor (3); Mathematics Club (2,3,4), Reporter (3), Sergeant-at-Arms (4); Monitors' Council (4); Central Colleens (1,2,3,4); Girls' Senior Glee Club (2,3,4); Girls' Junior Glee Club (2); Library Monitor (4); Junior Honor Society (3); Quill and Scroll (4).

A good student and a willing worker—all signs point to success.

DOROTHY DEAN

Spanish Club (3,4); Student Control (3,4); Girls' Senior Glee Club (2,3,4); Girls' Junior Glee Club (1); Natural Science (2); Central High Players (3,4); Opera (2,3); Road Show (1,4); Stage Art (2); Monitor (4); District Music Supervisors' Convention (2,3).

Dorothy is a reliable girl.

MARGARET DICKERSON

Monitor (4).

A stunning girl with a quiet charm.

WILLIAM DOTEN

Spanish Club (3,4); Inter-Club Council (3,4); Student Control (3,4); Hi-Y (1,2,3,4); Regiment (1,2,3,4), Corporal (2), Sergeant (3,4); Monitor (4); Junior Honor Society (2,3).

His slow drawl and friendly smile reveal a most interesting personality.

ERNEST DOUD

Gentlemen's French Club (3,4), Secretary (4); Stamp Club (1,2,3,4), Secretary (3), Treasurer (4); Natural Science Club (2); Hi-Y (2,3,4); Latin Club (4); Latin Play (1); Regiment (1,2,3,4), Corporal (3), Sergeant (4); Rifle Second Team (4).

An all around fellow and an expert rifleman.

EILEEN DRANEY

National Honor Society

Register Staff (4); Purple and White Handbook (4); Lininger Travel Club (4); Central Colleens (2,3,4); Girls' Senior Glee Club (4); Girls' Junior Glee Club (3); Natural Science Club (2); Le Cercle Francais (3,4); Opera (4); Monitor (4); Junior Honor Society (2,3); Quill and Scroll (4).

So patient, so dear, one cannot help but love her.

JACK DREW

Student Control (4); Boys' Senior Glee Club (3); Boys' Junior Glee Club (2); Natural Science Club (2); Cadet Officers' Club (4); Hi-Y (2); Property Manager (3,4); Stage Art (2); Regiment (1,2,3,4), Corporal (3), Second Lieutenant and Quartermaster (4); Engineer (3,4).

Where would Central's artists be without this member of the famous twins?

LOUIS DREW

Boys' Senior Glee Club (3,4); Boys' Junior Glee Club (3); Natural Science Club (2); Cadet Officers' Club (4); Hi-Y (2); Central High Players (3,4); Opera (3,4); Road Show (4); Regiment (1,2,3), Second Lieutenant (4); Stage Art (2).

The other half of the Drew boys—real business men.

HELEN DYGERT

Central Colleens (1,3,4); Girls' Senior Glee Club (3); Girls' Junior Glee Club (2); Natural Science (2); Tennis Tournament (4).

Her sunny disposition brightens many a dreary class.

KATHLEEN EATON

Spanish Club (4); Central Colleens (1,4); Girls' Senior Glee Club (4); Girls' Junior Glee Club (3); Girl Reserves (4); Monitor (4).

Kathleen is blessed with scholastic ability and pleasing personality.



HELEN CLAIRE ECK

Central Colleens (2); Student Control (2); Road Show (3).

Helen Claire's popularity is well-merited.

MARIE ELLIS

Central Colleens (1,2,3); Gym Club (1,2,3); Road Show (2).

Marie is ever so much fun.

WILLIAM ELLSWORTH

O-Book Staff (4); Register Staff, Managing Editor (4); Associate Managing Editor (3); Student Control (4); Boys' Senior Glee Club (3,4); Boys' Junior Glee Club (3); Speakers' Bureau (4); Natural Science (1,2,3); Hi-Y (1); Central High Players (4); Dilettantes (3); Opera (3,4), Costume Manager (3); Road Show (4), Costume Manager (3); Senior Play (3); Regiment (1,2,3); Color Day Committee (4); Library Monitor (3); Swimming Team (2,3); Quill and Scroll (3,4); National Music Supervisors' Convention (4); State Scholarship Contest (2); National High School Chorus (4).

Bill is a pleasing and brilliant addition to all of his numerous activities.

RUTH ENGLISH

Spanish Club (4); Greenwich Villagers (4); Central Colleens (2,3); Girls' Junior Glee Club (2,3); Girls' Senior Glee Club (4); Opera (4); Road Show (3); Spanish Play (3).

An outstanding artist in all of her achievements.

JOHN EPPLEN

Regiment (1,2); Stage Crew (1,2,3); Track (1,2,3); Basketball (2,3); Football (1,3,4); Athletic Manager (3,4).

Central's gift to blondes.

HARRIET EPWORTH

O-Book Staff (4); Student Control (3); Girls' Junior Glee Club (1); Girls' Senior Glee Club (2,3,4); Le Cercle Francais (2,3); Opera (3); Senior Art (4).

Attractiveness and ability are two qualities which belong particularly to Harriet.

MARY ERION

Mathematics Club (1); Central Colleens (3,4); Girls' Junior Glee Club (1); Girls' Senior Glee Club (1,2,3,4); Le Cercle Francais (4); Opera (3,4); Library Monitor (4); Music (1); Junior Honor Society (3); District Music Supervisors' Convention (1,2,3).

A demure lassie with a winning way.

DONALD ETCHISON

Purple Legion (4); Regiment (1, 2,3,4), Captain (4).

Need a good friend?—Try Don.

HERMAN FAIER

Register Staff (4); Student Control (3); Boys' O-Club (2,3,4); Natural Science (2,3); Latin Play (1); Regiment (1,2,3,4); Sergeant (4); Library Monitor (4); Swimming (2, 3,4), Captain (4).

"Pork" is quality with quantity, and a real swimming captain.

BARBARA FAIR

Central Colleens (4); Student Control (3); Girls' Junior Glee Club (2); Girls' Senior Glee Club (3,4); Natural Science (2); Stage Art (4); Junior Orchestra (1); District Music Supervisors' Convention (3,4); National Music Supervisors' Convention (4); State Music Contest (3).

Barbara is a girl who is always true to her word, her work, and her friends.



FERDINAND FALCONE

Student Control (4); Cadet Officers' Club (4); Regiment (1,2,3,4), Second Lieutenant (4).

A true friend and a loyal Centralite.



EDYTHE FARBER

Girls' Junior Glee Club (2); Girls' Senior Glee Club (3,4); Natural Science (2); Chorus (4); Swimming (4); District Music Supervisors' Convention (2,3,4); National Music Supervisors' Convention (4).

Edythe is abundantly gifted with musical and athletic talent.



CHARLOTTE FETTERMAN

Gym Club (2,3,4), Sergeant at Arms (3); Natural Science (2,3); Le Cercle Francais (3,4); Girls' Athletic Association (4); Pageant (4); Road Show (2,4); French Play (3); Basketball (4).

Charlotte is not only liked; she is adored.



HOLLY FETERS

Central Committee (4); Student Control (3,4), Treasurer (4); Girls' Junior Glee Club (2,3), Treasurer (3); Girls' Senior Glee Club (4); Opera (4); Road Show (4); Stage Art (3); Library Monitor (4).

Individual, charming, and blonde.



HOWARD H. FISCHER

National Honor Society

Register Staff (4); Boys' Senior Glee Club (2,3,4), Vice-President (3); Boys' Junior Glee Club, Vice-President (1); Cadet Officers' Club (4); Central High Players (3,4), President (4); Opera (3,4); Road Show (3,4); Spanish Play (3); Hi-Y (1,2,3,4); Regiment (1,2,3,4), First Lieutenant (4); Crack Platoon (2); Basketball (1); Junior Honor Society (3); Quill and Scroll (4).

Howard's dramatic ability is exceptional, and he is musical, too; in fact, he's a good fellow all around.

JOHN FOLEY

Natural Science (3); Hi-Y (3,4); Central High Players (1,2); Regiment (2,3,4).

Big things come in small packages.



MILTON R. FROHM

Regiment (1,2); Orchestra (1,2,3,4); Library Monitor (4).

A steadfast member of Central's orchestra.



ELDRÉD B. FORBES

Boys' Senior Glee Club (3); Hi-Y (1); Radio (2); Road Show (3); Regiment (1,2); Stage Crew (3,4); Football (1,3).

The lively director of a lively stage crew.



BERNICE GANTZ

Central Colleens (3,4); Student Control (4); Girls' Junior Glee Club (3); Girls' Senior Glee Club (3).

Her sparkling eyes and cheerful humor are ever evident.

ROSE FORMAN

Baseball (4).

Behind that quiet manner is an earnest determination.



PERRY GARVER

National Honor Society

Spanish Club (4); Boys' O-Club (4); Spanish Play (3); Golf (2,3,4); Football (4); Junior Honor Society (3).

Perry is good looking, a snappy dresser, and an accomplished pianist.

RUTH FOX

Debate Club (4); Central Colleens (3,4); Student Control (4); Library Monitor (4); Junior Honor Society (3).

Ruth's specialty is gaining A's.



MILDRED GEIGER

Central Colleens (4); Student Control (4); Girls' Junior Glee Club (3); Library Monitor (4).

One to be cherished for her helpfulness and willingness.

NEOMA FREGGER

Linger Travel Club (3,4); Central Colleens (2,3,4); Le Cercle Francais (3,4); Library Monitor (4); Junior Honor Society (2,3).

Neoma's quiet sincerity proves that silence may be golden.



MAYNARD GEISLER

Regiment (1,2,3,4), Sergeant (4); Hi-Y (2,3,4); Stage Crew (2,3), Electrician (2), Manager (3).

Productions at Central in the future will miss this able member of the stage crew.

JOHN M. GEPSON

National Honor Society

Purple Legion (2,3,4); Mathematics Club (2,3); President (3); Central Committee (2,3,4); Sergeant-at-Arms (2); Student Control (4); Speakers' Bureau (1,2,3,4); President (3), Vice-President (2); Cadet Officers' Club (4); Hi-Y (1, 2,3,4); Central High Players (3, 4); Road Show (3); Regiment (1, 2,3,4), Major (4); Engineers (3,4); Crack Squad (3); Crack Platoon (2); Junior Honor Society (1,2).

Dignity and leadership on the outside—but pep and love of fun occasionally come to the top.

MARGARET GILBERT

Girls' Junior Glee Club (1); Girls' Senior Glee Club (2,3); Natural Science Club (2); Opera (3); Chorus (1).

Her merry ways make us all adore her.

DON GIPSON

Register Staff (3), Circulation Manager (3); German Club (3); Boys' Junior Glee Club (2); Boys' Senior Glee Club (2,3), Sergeant-at-Arms (3); Hi-Y (3); Opera (3); Regiment (1,2,3,4), Second Lieutenant (4); Stage Crew (3).

One of the immortal stage crew of '30—and the exponent of fun.

MARGARET GLOE

German Club (2,3); Student Control (4); Girls' Junior Glee Club (1, 2); Girls' Senior Glee Club (2,3,4), Vice-President (4), President (4); Hockey (3); Tennis (3,4); Junior Honor Society (1).

She has grace and poise, and how she can handle a tennis racquet.

LOUIS GOLDSTONE

German Club (2,3,4); Stamp Club (1,2,3,4); Student Control (4); Natural Science (2); Central High Players (3,4); Library Monitor (4); Regiment (1,2).

The Senior Class Inventor.



WILLIAM E. GORDON

Regiment (1,2,3,4), Lieutenant-Colonel (4); Purple Legion (4); Student Control (3,4); Cadet Officers' Club (4); Hi-Y (1,2,3,4); Business Club (2,3); Central High Players (3,4); Opera (3); Road Show (3); Crack Squad (3); Crack Platoon (1,2); Chorus (3); Baseball (1,2).

Bill has fittingly maintained the honor and dignity and carried out with remarkable ability the duties of Central's highest individual honor.

BYRON GOULDING

O-Book Staff (4); Spanish Club (2,3,4), Vice-President (3), President (4); Central Committee (4); Cadet Officers' Club (4); Hi-Y (1,2, 3,4), First Lieutenant (4); Engineers (3); Crack Platoon (2); Color Day Committee (4).

Always cheerful, always friendly, always helpful.

HAROLD GRAVES

Boys' Junior Glee Club (2); Natural Science Club (2); Regiment (1, 2).

Very jolly and mischievous.

LAWRENCE GROSS

German Club (2,3), Sergeant-at-Arms (3); Natural Science Club (1, 2); Orchestra (1); Library Monitor (4).

His studious appearance is certainly deceiving.

RUTH RILLA GROSS

Greenwich Villagers (4); Central Colleens (2,3); Student Control (4); Girls' Junior Glee Club (4); Chorus (2,4); Library Monitor (4).

She gains friends by being a friend to all.

BALDWIN GUIOU

National Honor Society

Mathematics Club (3); Central Committee (4); Latin Club (4); Library Monitor (4).

One of the most accomplished scholars that Central has ever had.

CARL HAASE

German Club (2,3), President (3); Natural Science (2); Hi-Y (2); Regiment (1,2,3).

A good sport who just radiates humor.

DOROTHY HANSEN

Spanish Club (3,4); Central Colleen (3,4); Student Control (4); Natural Science (2,3); Road Show (4); Spanish Play (3); Stage Art (4); Chorus (4).

She's just a happy-go-lucky little bunch of sweetness.

ISABELLA E. HANSEN

National Honor Society

Register Staff (4); Lininger Travel Club (4); Central Colleen (2,3,4); Student Control (4); Girls' Junior Glee Club (3); Girls' Senior Glee Club (4); Natural Science (2); Library Monitor (4); Junior Honor Society (1,3); Quill and Scroll (4).

Serious and earnest, and bound to succeed.

RICHARD E. HANSEN

Boys' Senior Glee Club (2); Boys' Junior Glee Club (1); Regiment (1,2).

A scientific filibusterer in history class.



GEORGE HARRINGTON

National Honor Society

Student Control (4); Natural Science Club (2); Orchestra (1,2,3); Junior Honor Society (3); National Superintendents' Convention (4); State Music Contest (3).

A brilliant musician and talented in scholastics, too.

HELEN HARRIS

She always gets what she strives for.

LOUISE HARRIS

German Club (3,4), Secretary (3), Treasurer (4); Central Colleen (1,2,3,4); Girls' Junior Glee Club (2); Girls' Senior Glee Club (3,4); Natural Science Club (2); Library Monitor (4); State Music Contest (3).

She has high ideals with the ability to attain them.

C. LOWELL HARRISS

National Honor Society

Mathematics Club (2,3,4), President (3); Central Committee (3,4); Gentlemen's French Club (4); Inter-Club Council, President (3); Student Control (2,3); Boys' Junior Glee Club, President (4); Speakers' Bureau (4); Natural Science (2); Cadet Officers' Club (4); Hi-Y (2,3); Central High Players (3,4); French Play (3); Regiment (1,2,3,4), Second Lieutenant (4); Orchestra (2,4); Debate (4); Library Monitor (4); Junior Honor Society (2,3); Declamatory Contest (3,4); State Scholarship Contest (2).

Serious, conscientious, and trustworthy.

JOHN HARTMAN

Stamp Club (3); Natural Science Club (1,2); Hi-Y (2,3,4); Regiment (1,2,3,4); Rifle Team (4).

Johnny is very thorough and very industrious in all he does.

JACK HARTY

Student Control (4).

*Honesty, courage, and brains—
three attributes to be proud of.*

PATIENCE HASKELL

Girls' Senior Glee Club (4); Voice
(4); Girls' Junior Glee Club (3).

*An intelligent girl with a sunny
disposition.*

WILLA P. HAYES

Junior Honor Society (2).

*Persistence always brings its re-
ward.*

KENNETH HAYNIE

Boys' O-Club (3,4); Natural Science
Club (2); Chorus, President
(4); Baseball (2,3,4); Wrestling
(3); Basketball (2,3,4); Football (2,
3,4), Captain (4); Athletic Man-
ager (2); National Athletic Honor
Society (3,4); Commercial Contest
(2).

*An all-around athlete with a nat-
ural habit of making friends.*

ANGELINE WHITE

Mathematics Club (4); Lininger
Travel Club (4); Central Colleens
(4); Central High Players (4);
Road Show (2); Stage Art (2).

*Who has seen Angeline when she
wasn't smiling?*



TED HELGREN, JR.

Spanish Club (2,4); Natural Science
Club (2); Cadet Officers' Club
(4); Hi-Y (1,2,3,4); Road Show,
Properties (4); Senior Art (4);
Regiment (1,2,3,4), Second Lieutenant
and Quartermaster (4).

*His charming personality expresses
itself in all of his work.*

JACK HENDRICKS

Hi-Y (2,3,4); Regiment (1,2).

*Jack may be somewhat bashful,
but—!*

GERALDINE HERBERT

Spanish Club (3,4); Mathematics
Club (4); Central Colleens (3,4);
Girl Reserves (4); Stage Art (4);
Library Monitor (4); Volley Ball
(1).

*Her noble thoughts will inspire
her always.*

GLENN HERRIES

*His short stay has shown us what
we have missed in earlier years.*

ALICE HILDEBRAND

National Honor Society

Girl Reserves (2); Library Moni-
tor (4); Junior Honor Society (3,4).

A dignified, brilliant scholar.

LOIS HINDMAN

National Honor Society

O-Book Staff (4); Register Staff (4); Quill and Scroll (4); Lininger Travel Club (4); Central Colleens (1,2,3,4); Sergeant-at-Arms (4); Student Control (4); Gym Club (2,3,4); Natural Science (2); Monitor (4); Road Show (2,3); Junior Honor Society (1,2,3); State Scholarship Contest (2).

Success is within her reach, for she combines work with pleasure.

JERROLD HINSHAW

Constantly trying to make life happier for everyone.

OLIVE HINSHAW

Girls' Junior Glee Club (4); Central Colleens (2).

Her smile can overcome any obstacle.

HELEN HOKANSON

Girls' Senior Glee Club (4); Girls' Junior Glee Club (3); Monitor (4); Le Cercle Francais (3,4); National Music Contest (4); Natural Science (2).

Helen has that something which makes everyone love her.

VERA J. HOLLCROFT

National Honor Society

German Club (2,3,4), Secretary (3), President (4); Central Colleens (4); Student Control (4); Color Day Committee (4); Monitor (4); Junior Honor Society (1,3); Natural Science (1,2); Volley Ball (2).

Friendliness, simplicity, and sincerity are a pleasing combination.



IRENE HOPPER

She has that beauty of which poets sing.

HARRY HORAK

Natural Science Club (1,2); Regiment (1); Baseball (2); Junior Honor Society (1).

One of the most industrious and loyal boosters of Central.

MILES HOUCK

Gentlemen's French Club (4); Student Control (3,4); Natural Science Club (2); Cadet Officers' Club (4); Road Show (4); Library Monitor (4); Regiment (1,2,3,4), Second Lieutenant (4).

Dependable and persevering—that's "Mike."

IRENE MARY HOWLEY

National Honor Society

O-Book Staff (2,3); Register Staff (4); Quill and Scroll (4); Purple and White Handbook Staff (4); Monitor (4); Swimming (4); Tennis (4); Lininger Travel Club (2,3,4); Sergeant-at-Arms (4); Central Colleens (2,3,4); Girls' Senior Glee Club (3,4); Girls' Junior Glee Club (2); District Music Supervisors' Convention (3); Junior Honor Society (2,3); Student Control (3); Business Club (1).

Irene is quiet and reserved, yet congenial and cheerful.

DOROTHY HUGHES

National Honor Society

Register Staff (4); Girl Reserves (1,2,3,4), President (3,4), Vice-President (2); Mathematics Club (3,4); Lininger Travel Club (2,3,4); Inter-Club Council (4); Central Colleens (2,3,4); Girls' Senior Glee Club (3,4), President (4); Girls' Junior Glee Club (2); Sergeant-at-Arms (2); Gym Club (2,3,4), President (4); Girls' O-Club (2,3,4); Girls' Athletic Association (3,4), Vice-President (4); Road Show (3,4); Opera (3); Color Day Committee (4); Monitor (4); Volley Ball (1,2); Baseball (1,2); Tennis (3); Basketball (1,2,3,4); Hockey (3,4); Junior Honor Society (1,2); Quill and Scroll (4).

Dot is a good friend and excels in all she attempts.

RUTH HUNGATE

Student Control (4); Girls' Senior Glee Club (1,2,3,4); Girls' Junior Glee Club (1); National State Teachers' Association (2,3,4).

Peppy and witty—Ruth is always having a good time.

CHARLES S. INGALLS

Boys' O-Club (4); Regiment (1, 2), Bugle Corps (3); Stage Crew (2,3); Basketball (1,2,3,4); Football (1,4).

A capable and earnest athlete.

LOUIS A. INSERRA

Regiment (1,2,3).

His red hair is indicative of his love of wholesome fund.

ANNA LOUISE JANSEN

Monitor (4).

Her good nature and sweet disposition make her enjoyable to all.

HELEN K. JENKINS

Volley Ball (3).

Courteous to all and unpleasant to none.



ALBERT JESPERSEN

Enterprising and individualistic.



DOROTHY JOHNSON

(September)

Library Monitor (4); Central Colleens (2,3,4); Girls' Junior Glee Club (4); Swimming (3); Junior Honor Society (1); Business Club (1).

Faithful and true to all.



ERIKA JOHNSON

A true Centralite and a most able girl.



EVA JOHNSON

Spanish Club (2,3,4); Student Control (4); Natural Science (1,2); Library Monitor (4).

She serves her friends with all her heart.



GERTRUDE JOHNSON

(September)

Central Colleens (1,2,3) Girls' Senior Glee Club (2,3); Girl's Junior Glee Club (2); Library Monitor (3); Junior Honor Society (1).

Her industry now will bring her reward later.

IRENE JOHNSON

Spanish Club (4); Central Col-
leens (4); Gym Club (2,3,4), Ser-
geant-at-Arms (4); Girls' O-Club
(4); Gym Pageant (4); Stage Art
(4); Baseball (2,3); Basketball (4);
Volley Ball (1,2); Hockey (3,4).

*Pleasing personality combined with
lovely hair make a most delightful
girl.*

JULIA JOHNSON

Girls' Senior Glee Club (2,3,4);
Girls' Junior Glee Club (1); Girl
Reserves (3,4); Opera (4); Library
Monitor (4); Baseball (2); Basket-
ball (1,2,3); District Music Super-
visors' Convention (2,3,4).

*Her dignified silence cannot con-
ceal her good nature.*

MEREDITH JOHNSON

O-Book Staff (4); Register Staff
(1,4); Student Control (3,4); Boys'
Senior Glee Club (2,3,4), Sergeant-
at-Arms (4); Hi-Y (1,2); Opera (3,
4); Road Show (3); Library Mon-
itor (4); National Music Super-
visors' Convention (4).

*His ability to make friends is sur-
passed only by his ability to hold
them.*

RALPH JOHNSON

National Honor Society

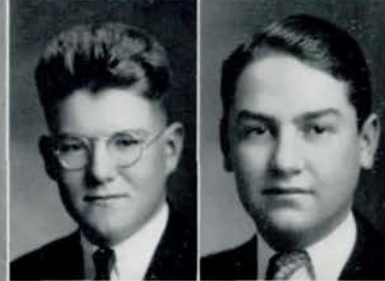
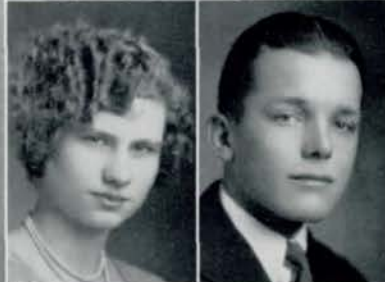
Purple Legion (4); Boys' Junior
Glee Club (1); Boys' O-Club (3,4);
Natural Science Club (2); Cadet
Officers' Club, Sergeant-at-Arms (4);
Road Show (3), Assistant Manager
(4); Regiment (1,2,3,4), Captain
(4); Crack Squad (3); Crack Pla-
toon (2); Student Association, Ath-
letic Board of Control (4); Baseball
(2,3,4); National Athletic Honor So-
ciety (3,4); Junior Honor Society
(1,2,3); State Scholarship Contest
(2).

*Though not very outspoken, Ralph
has a strong character; marvelous
ability for carrying out orders.*

STUART JOHNSON

Gentlemen's French Club (2,3,4),
Vice-President (4); Student Control
(4).

*He's out to enjoy life and to help
others to enjoy it, too.*



THOMAS W. JOHNSON

Boys' Senior Glee Club (1,2,3);
Boys' Junior Glee Club (1); Hi-Y
(1,2,3); Opera (1,2,3); Road Show
(1,2); Stage Crew (1); Wrestling
(3); District Music Supervisors'
Convention (1,2,3); State Music
Contest (1,2,3).

*Carefree and determined to enjoy
his life—that's Tom.*

WILLIAM A. JOHNSON

Spanish Club, Sergeant-at-Arms
(3); Hi-Y (2,3); Regiment (1,2,3);
Orchestra (3,4).

*His good nature and cheerfulness
mark him out.*

VIRGINIA JONES

National Honor Society

O-Book Staff (4); Register Staff
(3,4); Spanish Club (2,3,4); Student
Control (4); Girls' Senior Glee Club
(4); Girls' Junior Glee Club (3);
Speakers' Bureau (4); Natural Sci-
ence Club (2); Opera (4); Road
Show (3); Spanish Play (3); Li-
brary Monitor (4); Quill and Scroll
(4); Junior Honor Society (1,2,3).

*"Gin" has pep and enthusiasm and
ability to work.*

BETTY KELLEY

Central Committee (1,2,3,4); Cen-
tral Colleens (1,2,3); Sergeant-at-
Arms (3); Le Cercle Francais (3,4),
Sergeant-at-Arms (4); Class Ser-
geant-at-Arms (2).

Always a center of attraction.

LARSH KELLOGG

*An honest and capable man who
will earn a name for himself.*

SUSAN KEMPER

Library Monitor (4); Central Colleens (2,3); Senior Glee Club (3); Girls' Junior Glee Club (2), Vice-President (2); Les Menagres (1); Road Show (2,3); State Music Contest (3); Tennis (1).

She will always have friends eager to help her in whatever she does.

JOHN KENNEDY

Stamp Club, President (2,3); Cadet Officers' Club (4); Hi-Y (1,2,3,4); Road Show (3); Regiment (1,2,3,4), Second Lieutenant (4).

A most obliging young man—especially to the ladies—and Central's able bugler.

STEWART KENT

Cadet Officers' Club (4); Regiment (1,2,3,4), First Lieutenant (4); Library Monitor (4).

He can be ever so much fun without making himself too apparent.

LAURA LOUISE KIRK

O-Book Staff (4); Lininger Travel Club (3); Girls' Junior Glee Club (3); Stage Art (2); Orchestra (2); Library Monitor (4).

Looks, charm, and individuality.

PEGGY KIRKPATRICK

O-Book Staff (4); Register Staff (4); Spanish Club (3,4); Stage Art (2,3); Library Monitor (4); Quill and Scroll (4).

Small, blonde, and winsome, with a captivating smile.



WILLIAM KNOTT

Student Control (3,4); Boys' Junior Glee Club (2); Natural Science Club (2); Hi-Y (1,2,3,4); Road Show (3,4); Regiment (1,2,3,4), Captain and Commissary (4); Engineers (3,4); Crack Squad (3); Crack Platoon (2,3); Library Monitor (4); Basketball (1,2,3); Football (1).

The biggest little man in the senior class.



STANFORD KOHLBERG

Boys' Senior Glee Club (1,2,3,4); Central High Players (3,4); Opera (3,4); Road Show (3); Chorus (2,3,4); Tennis (4); Football (1); Cheerleaders (4).

His jovial humor and ready wit brighten up many a dreary Senior Home Room.



HENRIETTA KUENNE

Central Colleens (2,3,4); Girls' Senior Glee Club (4); Girls' Junior Glee Club (3); Le Cercle Francais (4); Chorus (2); Library Monitor (4).

A real friend, a good sport, and a wonderful swimmer.



JOHN KVENILD

Boys' Senior Glee Club (3); Boys' Junior Glee Club (1,2); Natural Science Club (2); Cadet Officers' Club (4); Hi-Y (4); Baseball (1); Track (3,4); Regiment (1,2,3,4), Second Lieutenant (4).

John's persevering steadfastness will overcome any obstacle.



LELA I. LEE

Business Club (1); Character Traits Committee (3); Road Show (3); Library Monitor (4).

Her gentleness is indeed a blessing.

LUCILE LEHMANN

National Honor Society

O-Book Staff, Associate Editor (4); Weekly Register Staff, Proof Reader (3); Assistant Editor (4); Spanish Club (3,4); Mathematics Club (1,2); Central Colleens (3,4); Student Control (3); Girls' Junior Glee Club (4); Opera, Assistant Costume Mistress (4); Latin Play (1); Library Monitor (4); Junior Honor Society (3); Quill and Scroll (4).

A leader in scholarship and activities and a good friend to all.

EILEEN LEPPERT

Register Staff (4); Purple and White Handbook Staff (4); Lininger Travel Club (3); Central Colleens (4); Student Control (3,4); Girls' Junior Glee Club (3); Natural Science Club (4); Le Cercle Francais (4); Character Traits Committee (3); Chorus (4); Library Monitor (4); Swimming Pageant (4).

Eileen will make friends with everyone.

GRACE E. LEVIN

Girls' Senior Glee Club (3,4); Girls' Junior Glee Club (2); Central High Players (4); Opera (4); Road Show (3,4); Chorus (3).

One of Central's most gay and lighthearted.

DONALD E. LIBBY

Student Control (3,4); Central High Players (4); Regiment (1,2,3,4); Orchestra (3,4); Vice-President (4).

Music hath charm, but music isn't everything.

DANIEL LINTZMAN

Debate Club (2,3,4); Boys' Junior Glee Club (1); Debate (2,3,4); Baseball (2,3); Track (4); Football (2,3).

Dan's ability is not limited to forensic expression.



MARVEL LINVILLE

Girls' Junior Glee Club (3); Gym Club (3,4); Pageant (4); Road Show (2,3,4); Tennis (2).

Her dancing ability is a feature of every Road Show.

MARTHA LIPPETT

Debate Club (3,4); Sergeant at Arms (4); Central Colleens (2,3,4); Student Control (4); Debate (3,4); Library Monitor (4).

Quiet, unobtrusive, yet she is a convincing debater.

LUCILE LLOYD

O-Book Staff (4); Spanish Club (2); Mathematics Club (1); Greenwich Villagers (2,3,4); Vice-President (4); Central Colleens (3); Girls' Junior Glee Club (3); Senior Art (4); Chorus (2).

Lucile's artistic talent is always evident.

FORREST LORENZEN

Spanish Club (2); Boys' Senior Glee Club (2,3,4); Boys' Junior Glee Club (1); Character Traits Committee (4).

Forrest has a pleasing voice and personality.

ELAINE LYNCH

O-Book Staff (4); Senior Art (4); Mathematics Club (3); Greenwich Villagers (3,4); President (4); Inter-Club Council (4); Central Colleens (1,2,3); Student Control (3,4); Color Day Committee (4); Library Monitor (4).

Dainty and oh! so precious.

VIRGENE MCBRIDE

National Honor Society

Mathematics Club (4); Lininger Travel Club (4); Central Colleens (3); Student Control (4); Girls' Junior Glee Club (3); Girls' Senior Glee Club (3,4); Central High Players (4); Opera (4); Library Monitor (4); Junior Honor Society (1, 3).

So little and yet so big.

HELEN MCCARGAR

Girls' Junior Glee Club (1); Girls' Senior Glee Club (2,3,4); Orchestra (1); State Music Contest (4).

A model of pep and cheer.

JAMES MCCREARY

Purple Legion (3,4); Hi-Y (1,2, 3,4); Regiment (1,2,3,4), Sergeant (3,4); Stage Crew (4); Baseball (2, 3,4); Tennis (3); Basketball (2,3, 4); Football (4); Athletic Squad (4).

He has a pleasing combination of athletic ability and brains.

MARGARET MCCULLEY

Central Committee (2,3,4), Secretary (4); Inter-Club Council (4); Central Colleens (1,2,3,4), Sergeant-at-Arms (4); Student Control (3,4); Natural Science Club (2); Le Cercle Francais (4); Library Monitor (3); French Play (4).

Her attractions are her good nature, sunny disposition, and sincerity.

PHOEBE McDONALD

Titians (1,3), Vice-President (2), Secretary-Treasurer (3); Central Colleens (1); Girls' Junior Glee Club (1); Girls' Senior Glee Club (1,2); Le Cercle Francais (4); Library Monitor (4).

An attractive Titian.



HELEN MCFARLAND

Girls' Junior Glee Club (3); Natural Science (2); Library Monitor (4); Quill and Scroll (4).

Helen's quiet charm is always evident.

RUTH MCKENZIE

Inter-Club Council (4); Central Colleens (3,4); Girls' Junior Glee Club (4); Central High Players (3, 4).

Ruth is eager to do her share, and her cheerful smile is always welcome.

GERALDINE MCKINLEY

Central Colleens (1,2,3,4); Student Control (4); Road Show (4); Stage Art (4).

A merry heart and spirit true—is it any wonder we all love you?

GLENDORA MCLEAN

Orchestra (1,2,3); National Music trict Music Supervisors' Convention (4); State Music Contest (4); Swimming (4).

A clever girl and a brilliant musician.

ANNA MACKEN

O-Book Staff (4); Spanish Club (4); Mathematics Club (3); Greenwich Villagers (2,3,4), Reporter (4); Central Colleens (1); Student Control (4); Natural Science Club (2, 4); Library Monitor (4).

A genial disposition brings her many friends.

MARJORIE MANLEY

Central Committee (3,4); Central Colleens (1); Girls' Junior Glee Club (2); Girls' Senior Glee Club (3); Speakers' Bureau (2,3,4), Secretary (4); Le Cercle Francais (4); Central High Players (4); Opera (3); Road Show (3,4); French Play (3,4); Chorus (2).

"Midge" is accomplished in many lines.

DOROTHY MARGOLIN

O-Book Staff (4); Register Staff (4); Project Committee (3); Debate Club (4); Central Colleens (2,3,4); Girls' Junior Glee Club (4); Library Monitor (4).

She accomplishes many things in her quiet way.

CATHERINE MARSH

National Honor Society

O-Book Staff (1); Greenwich Villagers (4); Central Colleens (2,3); Girls' Junior Glee Club (3); Natural Science Club (2); Library Monitor (4); Junior Honor Society (1,2,3).

Catherine has been one of the most versatile pupils in her class.

MIRIAM MARTIN

National Honor Society

O-Book Staff (4); Register Staff, Editorial Writer (4); Central Colleens (1); Speakers' Bureau (3,4), Treasurer (4); Le Cercle Francais (3,4), President (4); French Play (3); Junior Honor Society (1,3); State Scholarship Contest (1).

A striking individuality and charm make her outstanding.

EDNA MAYSTRICK

Weekly Register Staff, Reporter (4); Stamp Club (2); Natural Science Club (2); Girl Reserves (2); Library Monitor (3,4); Quill and Scroll (4).

Quiet but efficient.



FRANCES MELCHER

Linger Travel Club (2,3,4); Girls' Junior Glee Club (2,3,4); Opera (3,4); State Teachers' Convention (2,3); Library Monitor (4); Central Colleens (4).

She has a personality we all love.

RALPH MOORE

German Club (3); Central Committee (3,4); Boys' Senior Glee Club (2,3); Boys' Junior Glee Club (2); Cadet Officers' Club (4); Hi-Y (1,2,3,4); Road Show (4); Regiment (1,2,3,4), First Lieutenant and Adjutant (4); Student Association Advertising Manager (4).

Ralph never looks at the dreary side of things.

RICHARD MORAN

National Honor Society

O-Book Staff, Writeup Editor (4); Register Staff, Associate Editor (4); Mathematics Society (2,3,4), Reporter (4); Library Monitor (4); Monitors' Council (4); Hi-Y (2,3); Regiment (1,2,3); State Scholarship Contest (3); Stamp Club (2,3,4), Reporter (4); Junior Honor Society (1,2,3); Quill and Scroll (4).

Dick is peculiar—peculiarly wonderful.

FRANCES MORGAN

Central Committee (2,3,4); Central Colleens (1,2,3); Speakers' Bureau (2,3,4); Central High Players (3,4); Stage Art (4); Library Monitor (4).

A steadfast, valuable, loyal Centralite.

DAVID MORIARTY

Mathematics Society (4); Student Control (4); Cadet Officers' Club, President (4); Hi-Y (2,3,4), Treasurer (4); Central High Players (3,4); Road Show (2,3,4); Manager (4); Regiment (1,2,3,4), Major (4); Engineers (2,4); Crack Squad (2,3,4), Director (4); Crack Platoon (1,2); Color Day Committee (4); Orchestra (1,2); Football (4).

His executive ability plus a friendly nature make him a leader admired by all.

HELEN MULDOON

Central Colleens (1,2,3,4); Girls' Senior Glee Club (2,3,4), Sergeant-at-Arms (4); Student Control (4); Girls' Junior Glee Club (13); Natural Science Club (2); Le Cercle Francais (4); Opera (2,3); Library Monitor (3,4); Nebraska State Teachers' Association (2,3,4).

Everyone admires her serenity.

SOREN MUNKHOF

O-Book Staff (4); Register Staff (4); Dog Fanciers' Club (3,4), Reporter (3), Vice-President (4); Regiment (1,2,3,4); Library Monitor (4); Football (3).

Deliberate, efficient, and always ready to help.

FRANK L. MUSGRAVE

Central Committee (2,3,4), President (4); Gentlemen's French Club (2,3,4), President (4); Inter-Club Council (3,4); Hi-Y (1,2,3,4); French Play (2,3); Regiment (1,2,3,4), Corporal (4); Football (1,2).

No one will ever accuse him of being a bit retired.

DOROTHE MUSKIN

Register Staff, Advertising Solicitor (1); Girls' Junior Glee Club (3).

She has that something called "it."

JUANITA MYERS

Girls' Senior Glee Club (2,3,4); Girls' Junior Glee Club (1,2); Opera (2); Library Monitor (4).

A stunning girl with a quiet charm.



JANE MYERS

Mathematics Society (4); Lininger Travel Club (4); Central Colleens (1); Girls' Senior Glee Club (4); Girls' Junior Glee Club (2); Opera (4); Road Show (2); Library Monitor (4); Junior Honor Society (3).

A most talented, dainty, and charming blond.

VIRGINIA MYLER

Girls' Junior Glee Club (2,3,4), President (4); Le Cercle Francais (2,3,4), Vice-President (3), Treasurer (3), Secretary (4); Opera, Assistant Costume Mistress (3); Road Show (2,3,4); French Play (1,2,3); Color Day Committee (4).

Central's personality girl.

DOROTHY NELSON

Student Control (3,4); Girls' Senior Glee Club (2,3,4); Girls' Junior Glee Club (1); Costume Mistress of the Opera (2); Stage Art (3); Chorus (2,3); Library Monitor (4).

A golden-voiced lass of rare charm.

LAWRENCE NELSON

German Club (4); Gentlemen's French Club (2,3,4); Student Control (3); Speakers' Bureau (3); Natural Science Club (2); Cadet Officers' Club (4); Hi-Y (2,3,4); French Play (3); Regiment (1,2,3,4), Second Lieutenant (4); Rifle Team (4); Tennis (1); Basketball (2); Football (3); Junior Honor Society (3).

A true and earnest booster of Central.

STANFORD NELSON

Student Control (4); Boys' Junior Glee Club (1,2); Cadet Officers' Club (4); Hi-Y (1,2,3,4); Regiment (1,2,3,4), Second Lieutenant (4); Crack Platoon (2); Track (4); Football (4).

He just couldn't manage to learn library rules.

STERLING W. NELSON

Boys' Senior Glee Club (2,3); Boys' Junior Glee Club (1); Speakers' Bureau (2,3,4); Hi-Y (1,2,3,4); Central High Players (4); Pageant (1); Opera (2,3); Regiment (1,2,3,4); Sergeant (4); Sergeant-at-Arms, Junior Class (3); Track (4); Cheerleader (4).

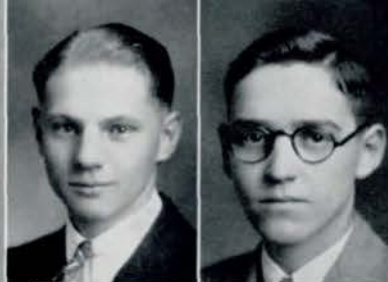
An enviable disposition enlivens everything he enters.



ARTHUR NIELSEN

German Club (3,4); Regiment (2,3,4), Corporal (4).

Gifted with musical and scholastic talent.



MARY VIRGINIA NILES

National Honor Society

O-Book Staff (4); Weekly Register Staff, Reporter (4); Purple and White Handbook Staff (4); Lininger Travel Club (2,3,4); Sergeant-at-Arms (3); Vice-President (4); Inter-Club Council (4); Central Colleens (2,3,4); Student Control (3,4); Girls' Junior Glee Club (1); Natural Science Club (2,4); Treasurer (4); Le Cercle Francais (4); Inter-Club Council, Representative; Central High Players (4); Library Monitor (4); Junior Honor Society (2,3); Quill and Scroll (4).

Mary accompanies all her work with a most winning smile.



SEBASTIAN NOBLE

Regiment (1,2,3,4).

Quiet, thoughtful ways but likeable, nevertheless.



LUCY O'HANLON

Register Staff (4); Girls' Junior Glee Club (2,3); Chorus (2,4); Library Monitor (4).

A girl who has gained and will continue to gain everyone as her friend.



JEAN O'LEARY

Spanish Club (2,3,4); Central Committee (2,3,4); Natural Science Club (2); Secretary of Class (3).

How we all admire her charming grace!

CLYDE OLSEN

O-Book Staff (4).

A friend to all who know him.

DOROTHY OSBORN

Central Colleens (4); Student Control (4); Girl Reserves (4).

Smiling and amiable to everyone she meets.

JANE OWEN

Central Colleens (3); Natural Science (2); Le Cercle Francais (4); Library Monitor (4); Junior Honor Society (2).

Clever in speech and a snappy little dresser.

TOM PATTERSON

Boys' Senior Glee Club (2,3); Boys' Junior Glee Club (1); Natural Science Club (2); Cadet Officers' Club (4); Hi-Y (1,2,3,4); Opera (2,3); Road Show (4); Regiment (1,2,3,4); Lieutenant (4); Track (4); Football (1); State Music Contest (2,3).

His ambition and perseverance will lead him on to success.

NADINE PATTON

O-Book Staff (4); Register Staff (4); Titians (1,2,3,4), Head Usher (4); Student Control (4); Girls' Junior Glee Club (2,3), Vice-President (3); Natural Science (2,3); Le Cercle Francais (2,3,4); Road Show (3); French Play (3); Library Monitor (4).

Lovely red hair, snappy blue eyes, and an entrancing smile.

RUTH PECK

Spanish Club (4); Chorus (3); Library Monitor (4); Junior Honor Society (2,3).

Modest, happy, and dignified all the while.

GAITHA PEGG

Cadet Officers' Club (4); Regiment (1,2,3), First Lieutenant and Adjutant (4); Basketball (1,2); Football (2,3).

He can always be depended upon.

MILDRED PELTER

Lining Travel Club (2,3); Treasurer (3); Central Colleens (1,2,3); Student Control (2); Girls' Senior Glee Club (2); Girls' Junior Glee Club (1); Assistant Costume Mistress of the Opera (4); Library Monitor (4); Junior Honor Society (1,2,3); State Music Contest (2).

As peppy and jolly a girl as ever was.

ALICE PERRY

A merry, ready wit and a flashing smile.



LAURA JANE PERRY

O-Book Staff (4); Student Control (4); Library Monitor (4); Junior Honor Society (1,2).

As lovely and as dainty as a fairy queen.

RALPH PETERSEN

How he can make all his classmates enjoy his classes.

HELEN PETERSON

Le Cercle Francais (4); Central High Players (4); Road Show (3,4).

She's just bubbling over with joy and fun.

ROBERT PILLING

Purple Legion (2,3); Mathematics Club (1,2,3), Secretary-Treasurer (3); Central Committee (3); Speakers' Bureau (2,3), Treasurer (2), Vice-President (3); Cadet Officers' Club (4); Hi-Y (1,2,3,4); Central High Players (2,3); Regiment (1,2,3,4), First Lieutenant (4); Stage Crew (2,3); Student Association, President (4); Cheer Leader (3).

This diminutive leader of the students is just brimming with energy.

JAY PLANTEEN

O-Book Staff (4); Art Editor; Greenwich Villagers (3,4); Natural Science Club (2); Latin Club (4); Regiment (1,2); Student Association Advertising Manager (4).

His art is his power.

HELEN POYNTER

German Club (2,3); Orchestra (1, 2,3,4), President (4).

Bashful but sweet—such is Helen.

RICHARD PRICE

Football (3,4); O-Club (4); Wrestling (4); Student Control (4); Track (3,4).

His versatility in athletics is truly remarkable.

JOHN RALPH

Central Committee (3,4); Gentlemen's French Club (3,4), Treasurer (4); Student Control (3); Natural Science Club (3); Cadet Officers' Club (4); Hi-Y (1,2,3,4); Road Show (3,4); Regiment (1,2,3,4), Second Lieutenant (4).

An easy-going chap with a host of friends.

WILLIAM RAMSEY

National Honor Society

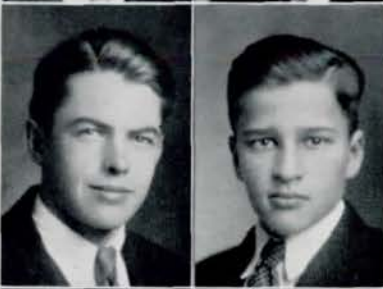
O-Book Staff, Club Editor (4); Purple Legion (2,3,4); Gentlemen's French Club (3,4); Boys' Senior Glee Club (2,3), Sergeant-at-Arms (3); Boys' Junior Glee Club (1); Speakers' Bureau (2,3,4), President (4); Boys' O-Club (4); Cadet Officers' Club (4); Hi-Y (1,2,3,4); President (2); Opera (3); Road Show (4); Regiment (1,2,3,4), Captain and Ordnance (4); Color Day Committee Chairman (4); Class Officers, Sergeant-at-Arms (2), President (3); Junior Honor Society (1, 2,3), Secretary and Treasurer (2), President (3); District Music Supervisors' Convention (2,3).

His charming personality makes him one of Central's most capable leaders.

JOHN RANDALL

Purple Legion (3,4); Mathematics Club (3,4); Gentlemen's French Club (4); Student Control (4); Natural Science Club (2); Cadet Officers' Club (4); Hi-Y (2,3,4); Road Show (3,4); French Play (4); Regiment (1,2,3,4), Captain (4); Crack Squad (3); Crack Platoon (2); Monitor (4); State Scholarship Contest (2).

J. Stone always looks at the world with eyes twinkling with fun.



ELLEN RASMUSSEN

Girls' Junior Glee Club (3); Natural Science Club (3).

We wish she had been with us longer.

MORTON RAYMAN

National Honor Society

Mathematics Club (2); Central Committee (4); Student Control (3, 4); Stamp Club (2,3); Boys' Junior Glee Club (1); Natural Science Club (1,2); Cadet Officers' Club (4); Spanish Play Properties Manager (3); Regiment (1,2,3,4), Captain and Personnel Adjutant (4); Engineers (3); Monitor (4); Junior Honor Society (3).

He accomplishes what he sets out to do.

ISHAM REAVIS

O-Book Staff (3); Greenwich Villagers (3,4); Boys' Senior Glee Club (4); Natural Science Club (3); Regiment (3); Swimming (2).

A shiek—the real product.

WILLIAM RESNICK

Natural Science Club (2); Regiment (1,2); Track (3); Basketball (3).

Although gifted with wit, he is shy of showing it.

RUTH REUBEN

National Honor Society

O-Book Staff (4); Register Staff, News Editor (4); Mathematics Club (2,3,4), Program Chairman (3), Treasurer (3), Secretary (4); Greenwich Villagers (3,4); Secretary-Treasurer (4); Central Colleens (1); Speakers' Bureau (1,2,3,4); Gym Club (1,2,3,4); Central High Players (2,3,4); Road Show (2,3); Library Monitor (4); Junior Honor Society (1,2,3); State Scholarship Contest (1,2); Quill and Scroll (4).

An outstanding member of the senior class.

HELEN RICHARDSON

Girls' Senior Glee Club (2,3,4); Girls' Junior Glee Club (1,2); Gym Club (2,3,4), Secretary (4); Pageant (4); Opera (2,3,4); Road Show (2,3); Spanish Play (3); Hockey (3); Baseball (2); Basketball (2); Volley Ball (1,2); State Music Contest (2,3).

Charming, brilliant and pretty.

JEAN RICHMOND

Register Staff (3); Titans (1,2,3), Vice-President (3); Central Colleens (3); Girls' Senior Glee Club (1,2,3), Secretary-Treasurer (2,3), Sergeant-at-Arms (4); Gym Club (1); Central High Players (3); Opera (2); Road Show (1); Color Day Committee (3).

A sweet and enchanting Titan.

RICHARD RIDDLE

Basketball (3,4).

A real friend and athlete.

FRANCES RIVETT

Central loses a lovely girl.

ELSIE ROMM

O-Book Staff, Advertising Solicitor (2); Register Staff, Advertising Solicitor (1,2); Stage Art (3,4); Library Monitor (4).

A demonstrator of friendship.



HOWARD ROSE

O-Book Staff, Advertising Manager (4); Register Staff, Associate Editor (3,4); Senior Book Staff (3); Road Show (3); Stage Crew (3); Swimming (4); Football (3,4); Quill and Scroll (4).

One glance from those big brown eyes causes many a feminine heart to flutter.

SAM ROSENSTEIN

Regiment (1,2,3,4); Baseball (2); Basketball (4).

His quiet voice is not without power and influence.

GERTRUDE ROTHKOP

Central Colleens (2,3); Student Control (3), Secretary (3); Girls' Junior Glee Club (3); Stage Art (3); Library Monitor (3).

Full of inexhaustible good nature.

EDWARD ROW

National Honor Society

Spanish Club (3); Boys' Senior Glee Club (2,3,4); Boys' Junior Glee Club (1); Hi-Y (3); Opera (4); Road Show (3); Orchestra (4); Monitor (3); District Music Contest (3); State Music Contest (2).

His ability as a pianist will make him famous.

TED RUF

Swimming (1); Basketball (2).

A powerful but reticent personality.

WESLEY RUSSELL

Boys' Junior Glee Club (1,2,4), Secretary-Treasurer (4); Business Club (1).

What will Central's freshman girls do without him?

HERBERT SALSBURG

Library Monitor (4).

Ever-anxious to please.

HAROLD SAXE

National Honor Society

O-Book Staff, Honor Section Editor (4); Mathematics Club (2,3,4); Debate Club (2), Vice-President (3), President (4); Inter-Club Council (3,4), President (4); Monitors' Council Secretary (4); Speakers' Bureau (2,3,4); Natural Science Club (2); Central High Players (3, 4); Regiment (1,2); Color Day Committee; Debate Squad (2), State Team (3,4); Library Monitor (3,4); Junior Honor Society (3); Declamatory (4); State Scholarship Contest (1).

Known for his debate talent and his cheerful nature.

CHARLES SAXTON

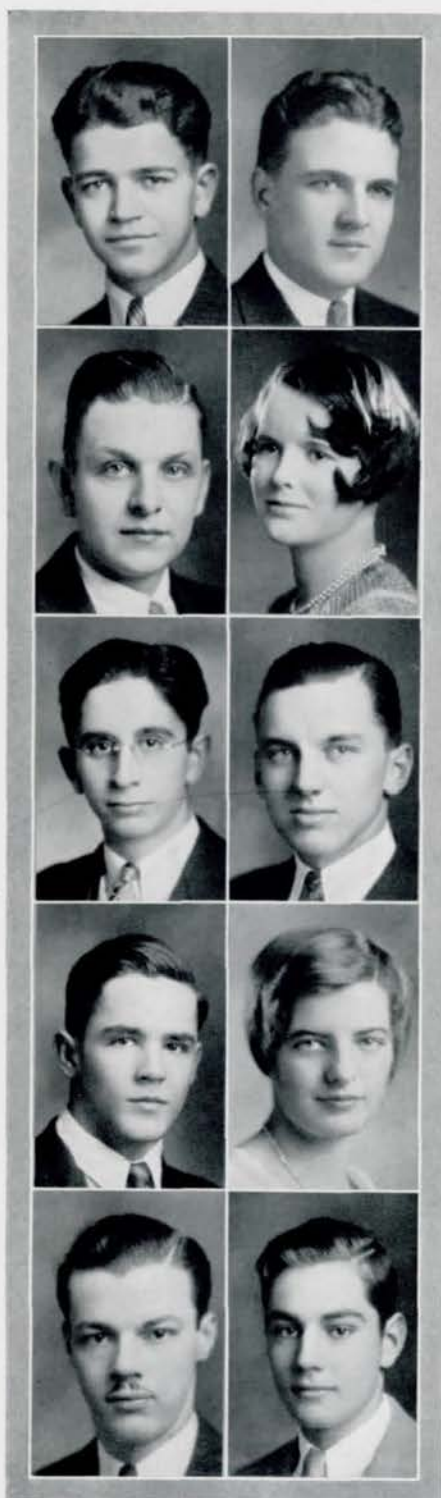
Boys' Senior Glee Club (2,3,4); Boys' Junior Glee Club (1); Boys' O-Club (3,4); Regiment, Band (1,2, 3,4); Orchestra (1,2,3); Chorus (1); Wrestling (2,3,4); Track (2,3,4); Football (2,3,4); Athletic Manager (4).

One of the best all-around athletes ever to attend Central.

OTHEL SCHLATTER

Regiment, Band (1,2,3).

A quiet chap who is entirely too good-looking.



CHARLES SCHWAGER

Purple Legion (4); Central Committee (3,4); Gentlemen's French Club (4); Boys' Senior Glee Club (2); Boys' Junior Glee Club (1); Speakers' Bureau (2,3,4), Sergeant-at-Arms (4); Cadet Officers' Club (4); Hi-Y (1,2,3,4); Central High Players (3,4); Opera (2); Road Show (2,3,4); French Play (3,4); Regiment (1,2,3,4), Captain (4); Crack Squad (3); Crack Platoon (2); Student Association Vice-President (4); Class Officer, Treasurer (2); Swimming (2); Track (1); Football (1,2); State Music Convention (2).

One of the most capable leaders in the regiment.

MARIAN SEARLE

National Honor Society

Mathematics Club (2,3,4); Central Colleens (3,4); Girls' Senior Glee Club (2,3); Girls' Junior Glee Club (1); Le Cercle Francais (2,3); Opera (2); Road Show (3); Monitor (2,3,4); Junior Honor Society (2,3).

She has real talent with her dependability and willingness to work.

FRED SEGUR

Student Control (2,3,4); Boys' Senior Glee Club (2,3,4), President (4); Boys' Junior Glee Club (1); Natural Science Club (1,2); Hi-Y (1,2,3,4); Radio (2); Opera (2,3, 4); Road Show (2,3,4); Regiment (1,2,3), Band (3); Library Monitor (4); Swimming (1,2,4); National Music Supervisors' Convention (2, 4); State Music Contest (1,2,3,4).

His golden tenor voice and friendly smile will bring success.

MILDRED SHERMAN

Central Colleens (1); Speakers' Bureau (4); Le Cercle Francais (4); Central High Players (4).

"Billie" is the life of the party.

HUDSON SHOTWELL

Boys' Senior Glee Club (3); Boys' Junior Glee Club (2); Natural Science Club (1); Central High Players, Associate Manager (4); Track (2,3); Football (1).

His sly, jovial humor is welcome everywhere.

NADINE SHRADER

Girls' Junior Glee Club (2,3); President (3); Gym Club (3); Road Show (3,4); Monitor (4); Swimming (4); Basketball (1,2).

Famous for her pep and wit.



GEORGE SMITH

Spanish Club (3,4); Hi-Y (2,3,4); Regiment (1,2,3,4), Corporal (4); Wrestling (1); Track (1).

A giant with lofty ambition and the courage to follow it out.

MILFORD SKOW

Orchestra (1,2,3,4); Debate (1); Football (4).

A hard-working member of the Orchestra and a sincere student.



WARREN H. SMITH

Purple Legion (4); Central Committee (3,4); Gentlemen's French Club (4); Boys' Senior Glee Club (3); Boys' Junior Glee Club (2); Speakers' Bureau (2,3,4); Natural Science Club (2); Cadet Officers' Club, Treasurer (4); Hi-Y (1,2,3,4); Regiment (1,2,3,4), Captain (4); Crack Platoon (2).

Warren is sincere and happy in doing things to help others.

LOIS M. SMALL

National Honor Society

O-Book Staff (2); Mathematics Club (2,3,4), Sergeant-at-Arms (3), Treasurer (4); Lininger Travel Club (1,2,3,4), Treasurer (2), Secretary (3), President (4); Monitors' Council (4); Central Colleens (2,3,4); Student Control (3); Le Cercle Francais (4); Library Monitor (4); Junior Honor Society (1,2,3); State Scholarship Contest (1,2).

She commands respect by her initiative and executive ability.



MARY ALICE SNIDER

Titians (4); Central Colleens (4); Central High Players (4).

Mary Alice has that much desired personality.

DOLOROS SMILEY

Lininger Travel Club (3,4); Central Colleens (2,3,4), Committee Chairman (4); Girls' Senior Glee Club (4); Girls' Junior Glee Club (3); Library Monitor (4); Junior Honor Society (1,2).

The gift of fascination and the power of charm.



BONNIE E. SOMERS

Student Control, Secretary (4); Girls' O-Club (1,2,3,4).

An outstanding and versatile athlete.

CELESTINE SMITH

Latin Club, Reporter (4); Library Monitor (4); Baseball (2); Volley Ball (1).

Clever, charming and dependable is Celestine.



EDWIN SOMMER

Register, Advertising Solicitor (3); German Club (1,2); Regiment (1,2).

Eddie's peppy nature belies a serious countenance.

LEO SONDEREGGER

German Club (3,4), President (4); Boys' Junior Glee Club (1); Speakers' Bureau (3); Natural Science Club (1); Road Show (4); Orchestra (1,2,3,4); Swimming (4).

Though small in stature, he is gifted with wonderful ability.

HARRY STAFFORD

Student Control (2,3,4); Inter-Club Council (3); Boys' Senior Glee Club (2,3,4), President (3); Boys' Junior Glee Club (1); Natural Science Club (2); Hi-Y (2,3,4); Central High Players (3,4); Opera (2,3,4); Road Show (2,3,4); Senior Play (3); French Play (3); Regiment (2,3); Orchestra (1,2); Library Monitor (4); National Music Supervisors' Convention (2,4); District Music Supervisors' Convention (3); State Music Contest (2,3,4).

As a singer and actor, we will expect big things of him in the future.

JUANITA STAFFORD

Central Colleens (4); Orchestra (3,4), Vice-President (4); Monitor (4).

A delicate and charming lass.

ROSE STEIN

Stamp Club (2); Debate Club (3,4); Lininger Travel Club (2); Central Colleens (2,3); Business Club (1,2); Debate Squad (3,4); Debate Contest (4).

A veteran forensic artist.

HENRY STERN

Central High Players (3); Track (4).

Though seldom heard, he speaks wisely when he does.



FRANK STORK

Spanish Club (4); Boys' Senior Glee Club (3,4); Boys' Junior Glee Club (2); Natural Science (1); Hi-Y (1); Road Show (3).

For he's a jolly good fellow!

RICHARD STORK

Student Control (4); Hi-Y (1); Orchestra (1,2,4); Swimming (4); Tennis (3).

His deeds are greater than his words.

ELIZABETH STRINGER

Greenwich Villagers (4); Central Colleens (1,3); Girls' Junior Glee Club (2,3); Natural Science Club (1,4); Girl Reserves (1); Library Monitor (4).

Quiet dignity hath she.

JOHN SULLIVAN

O-Book Staff, Sport Editor (4); Weekly Register Staff, Associate Managing Editor (3,4), Sport Editor (4); Purple and White Handbook Staff, Writup Committee (4); Stamp Club (1,2,3); Mathematics Society (2); Hi-Y (1,2,3,4); Regiment, Private (1,2,3); O-Book Salesman (4); Senior Book Staff (3); O-Book Staff, Senior Writup Committee (4).

A real editor and Centralite, all five feet three of him.

CLARA ROSE SVOBODA

Spanish Club (3,4), Sergeant-at-Arms (4); Central Colleens (4); Girls' Senior Glee Club (3,4); Girls' Junior Glee Club (2); Natural Science Club (2); Opera (4); Spanish Play (3).

Vivacious and loquacious.

MARY ELIZABETH TAGG

Inter-Club Council (4); Le Cercle Francais (3,4); French Play (3).

A sweet brunette with a ready smile.

ROBERT TANNER

O-Book Art Staff (4); Greenwich Villagers (3,4); Natural Science Club (2); Hi-Y (2,3); Regiment (1, 2,3,4); Sergeant (4); Student Association Advertising Manager (4); Senior Art (4).

A brilliant artist who can express his art completely in posters.

ESTHER TAYLOR

Spanish Club (4); Central Colleens (3); Girls' Senior Glee Club (3,4); Girls' Junior Glee Club (1, 2).

Gracious, pretty, and sweet—no wonder we all like Esther.

VIRGINIA TEDROW

National Honor Society

Register Staff (4); Spanish Club (4); Central Colleens, Committee Chairman (3,4); Student Control (4); Girls' Senior Glee Club (2,3, 4); Reporter (2); Vice-President (4); Girls' Junior Glee Club (1); Natural Science Club (2); Library Monitor (4); Junior Honor Society (3); District Music Supervisors' Convention (3); Quill and Scroll (4).

A loyal Centralite who will be greatly missed next year.

GEORGE THATCHER

Student Control (4); Boys' Senior Glee Club (2,3,4); Boys' Junior Glee Club (2); Natural Science Club (2); Opera (3,4); Library Monitor (4); National Music Supervisors' Convention (4); District Music Supervisors' Convention (3).

A dignified, quiet scholar.



LOUISE M. THOMAS

O-Book Staff (4); Central Colleens (2,3,4); Library Monitor (4).

She has a keen mind, and she knows how to use it.

MARGARET F. THOMAS

Spanish Club (2,3,4); Greenwich Villagers (3); Lininger Travel Club (2,3,4); Central Colleens (2,3); Natural Science Club (2,3); Central High Players (4); Stage Art (4); Scholastic Contest (3).

Her artistic ability is very promising.

MYRTLE THOMAS

National Honor Society

Lininger Travel Club (4); Central Colleens (2,3,4); Treasurer (4); Student Control (4); Girls' Senior Glee Club (4); Girls' Junior Glee Club (3); Natural Science Club (2); Le Cercle Francais (4); Central High Players (3,4); Library Monitor (4); Junior Honor Society (1,2, 3); State Scholarship Contest (2).

Myrtle is a real student and actor.

LOIS THOMPSON

O-Book Staff (4); Register Staff (4); Student Control (4); Natural Science Club (2,3); Library Monitor (4); Quill and Scroll (4).

For all her dignity we know how jolly she can be.

NORA THORNTON

Spanish Club (4); Titians (2,3,4); President (4); Central High Players (3,4); Opera (3,4); Road Show (4); Color Day Committee (4); Stage Art (2); Character Traits Committee (3).

Dainty as a rose and graceful as a swan.

DOROTHY D. THRUSH

O-Book Staff (4); Spanish Club (3); Central Colleens (3,4); Girl Reserves (3,4); Library Monitor (4); Junior Honor Society (3).

A priceless friend to all who know her.

LOIS F. TIFFANY

Central Colleens (1); Girls' Senior Glee Club (3,4); Girls' Junior Glee Club (3); Library Monitor (4).

Her clever remarks have amused many.

BOB TILFORD

Debate Club (4); Speakers' Bureau (4); Natural Science Club (2); Hi-Y (3,4); Business Club (1); Baseball (1,2,3,4); Wrestling (2); Drill (1,2).

His cheerfulness and good nature are inexhaustible.

MARJORIE TILLOTSON

National Honor Society

Spanish Club, Vice-President (4); Linger Travel Club (3,4); Inter-Club Council (4); Central Colleens (3,4), President (4); Girls' Senior Glee Club (4); Girls' Junior Glee Club (3); Le Cercle Francais (3,4); Vice-President (4); Opera (4); French Play (3); Color Day Committee (4); Library Monitor (4); Junior Honor Society (3).

"Marge" is as stunning as she is versatile.

VERA TRALLE

Central Colleens (1,3,4); Student Control (4); Le Cercle Francais (2,4); Stage Art (4); Library Monitor (4); Swimming (2).

Her sound judgment and sincere thoughtfulness make her admired by us all.



SOL TUCHMAN

O-Book Staff, Business Manager (4); Register Staff, Business Manager (4); Character Traits Committee (4); Student Control (4); Boys' Junior Glee Club (4); Regiment (1,2); Chorus (4); Library Monitor (4); Basketball (4); Junior Honor Society (2); Quill and Scroll (4).

His assets—trustworthiness, executive ability, conscientiousness.

FRANCES TURNER

Natural Science (2).

An ideal combination of sweetness and petiteness.

HAROLD TWISS

Quiet and unassuming, but a hard worker.

GRACE TYRRELL

Girls' Junior Glee Club (4).

Demure and dignified, yet peppy and jolly.

ANNETTA VAN RIPER

Girls' Senior Glee Club (4); Girls' Junior Glee Club (3); Opera (4); Road Show (3,4); French Play (3).

There are not many as kind and unselfish as Annetta.

WARREN WALLACE

Stamp Club (3); Boys' O-Club (3); Natural Science Club (2); Hi-Y (1,2); Radio, Vice-President (2); Regiment (1,2,3); Stage Crew (3,4); Track (3,4); Basketball (3).

The crooning troubador of the stage crew.

MARGARET WATERMAN

National Honor Society

Lining Travel Club (3,4); Monitors' Council (4); Central Colleens (3,4), Vice-President (4); Girls' Senior Glee Club (3), Sergeant at Arms (4); Girls' Junior Glee Club (2); Natural Science Club (2); Girl Reserves (3,4), Committee Chairman (4); Stage Art (3); Library Monitor (4); Junior Honor Society (3).

"Pug" is a true pal, always thoughtful of others.

ESTHER WEBER

National Honor Society

Spanish Club, Secretary-Treasurer (4); Student Control (3,4); Vice-President; Gym Club (4); Natural Science Club (2); Stage Art (2); Library Monitor (4); Baseball (1,2,3); Swimming Pageant (4); Tennis (1,2,3); Basketball (1,2,3,4), Captain (4); Hockey (3); Volley Ball (1,2,3); Junior Honor Society (3); Girls' Athletic Association (4).

Esther is splendidly successful in anything she undertakes.

HENRY WEINER

Spanish Club (2); Junior Boys' Glee Club (1,2); Boys' O-Club (2,3,4); Pageant (1,2); Baseball (4); Wrestling (2,3,4); Track (1,2,3); Basketball (1,2,3,4); Football (1,2,3,4); Athletic Manager (3,4).

"Weinah's" ever-present good nature and his slow drawl are delightfully refreshing.

GENEVIEVE WELSH

National Honor Society

Senior Book Staff (4); Mathematics Club (3,4); Central Colleens (2,3,4); Student Control (4); Girls' Senior Glee Club (3,4); Girls' Junior Glee Club (2); Natural Science Club (2); Le Cercle Francais (4); Chorus (2); Library Monitor (4); Junior Honor Society (1,2,3); State Music Contest (3); Quill and Scroll (4).

A cheerful worker and a congenial companion.



RUTH WELTY

Register Staff (4); Central Colleens (1,3,4); Student Control (3,4); Girls' Senior Glee Club (3,4); Girls' Junior Glee Club (2); Speakers' Bureau (2,3); Natural Science Club (2); Le Cercle Francais (4); Central High Players (3,4); Opera (3,4); Road Show (3,4); Stage Art (2); Library Monitor (4); Junior Honor Society (3); National Music Supervisors' Convention (4); State Music Contest (3); Quill and Scroll (4).

Ruth has distinguished herself greatly in musical and dramatic art.

RUTH WETHERELL

Spanish Club (2,3,4); Girls' Senior Glee Club (3,4); Girls' Junior Glee Club (3); District Music Supervisors' Convention (3).

Silent, loyal, and serene.

BETTY WILLMARTH

Register Staff, Associate Editor (4); Central Committee (3,4); Greenwich Villagers (2); Central Colleens (1); Le Cercle Francais (4); French Play (3); Class Reporter (2,3); Quill and Scroll (4).

Her charm is irresistible.

MARGARET WOMBLES

O-Book Staff (4); Mathematics Club (1); Student Control (3,4); Girls' Junior Glee Club (3); Central High Players (3); Library Monitor (4).

January Senior Writcup Editor.

JACK A. WOODRUFF

O-Book Staff (4); Spanish Club (4); Central Committee (3,4); Cadet Officers' Club (4); Hi-Y (1,2,3); Pageant (1); Opera (2); Road Show (3); Regiment (1,2,3,4), Captain and Adjutant; Engineers (2); Crack Squad (3); Crack Platoon (2); Chorus (1); Student Association Chairman, Reception Committee (4).

Jack has a very contagious smile.

WILLIAM WOOLFSON

Rosy cheeks and an intelligent smile.

LILLIAN WRENN

Spanish Club (2,3,4); Mathematics Club (2,3,4); Central Colleens (1, 2,3,4); Girls' Junior Glee Club (3); Gym Club (4); Natural Science Club (2); Girls' Athletic Association (4); Library Monitor (4); Baseball (1,3,4); Basketball (1,2,3,4).

Her friends are well-deserved.

FLAVEL WRIGHT

Student Control (3,4); Natural Science Club (2); Cadet Office's Club (4); Road Show (4); Orchestra (1,2,3); Football (3); Junior Honor Society (1); Regiment (1,2, 3,4); Second Lieutenant, Band (4).

Gifted with musical, athletic, and scholastic talent.

JUNE WRIGHT

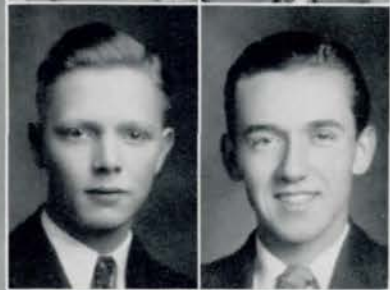
Central Colleens (2,3); Girls' Junior Glee Club (2,3); Girls' Senior Glee Club (4); Chorus (4).

Pretty and fun-loving with ever so many companions.

FRANCES YOUNG

Swimming (4); Golf Tournament (3).

How she can wield a masher!



RICHARD YANT

Latin Play (1); Regiment (1,2); Chorus (2,3).
He excels in all he attempts.

WILEY ZINK

National Honor Society

Student Control (4); Boys' Junior Glee Club (1); Boys' Senior Glee Club (2,3,4); Natural Science Club (2); Hi-Y (3,4); Opera (3); Road Show (2,3,4); Library Monitor (4); Junior Honor Society (1, 2).

His musical ability has greatly helped three of our Road Shows.

DICK ZOESCH

Trenton High School; Junior Glee Club (3); Cheer Leader (1,2, 3); Basketball (1,2,3); Track (3); Golf (3); Student Council (2); "T" Club (3); Opera (2).

Central High School; Register Staff, Sport Editor (4); Senior Boys' Glee Club, Vice-President (4); O-Club (4); National Athletic Honor Society (4); Basketball (4); Tennis (4); Golf (4).

Dick is very agile, especially with his feet and his tongue.

SAM ZORINSKY

German Club (2); Regiment (1,2).

One to be remembered for his cheery, constant smile.

WILMA GREENWAY

Girls' Junior Glee Club (1); Girls' Senior Glee Club (2,3,4); Vice-President (4); District Music Supervisors' Convention (3); Opera (1,2,3,4); Natural Science Club (2).

So quiet and unassuming, but to hear her soft voice wins one completely.

Calendar September 1929 - June 1930

SEPTEMBER

- 3—Yo-Yo's came into vogue. Mr. Hill claimed large collection.
- 11—John Gepson had his first walk home.
- 13—Mrs. Vartanian started an eighteen-day diet.
- 16—She stopped.
- 18—Bill Ramsey elected Color Day chairman—three guesses what colors he'll be blushing now!
- 19—Dave Moriarty elected president of C. O. C.
- 20—The first egg found by Gin Jones in the so-called egg sandwiches in the cafeteria.
- 24—F. H. Gulgard got a haircut—no, all of them.
- 25—Bob Pilling was mistaken for a freshman.

OCTOBER

- 4—January senior class election. Frances Barth, president.
- 8—Parent-Teacher Association Open House—when teachers told tales out of school.
- 9—Ruth Claassen had a new fad—copper digging. All the boys were bringing pennies to school.
- 11—Student Association officers were installed.
- 11 and 12—Central High Players in "The Youngest"—old enough to speak for itself.
- 18—Color Day—pite and whurple.
- 20-25—Midterms—quarterly panic.
- Monday, Tuesday, and Wednesday, October 28, 29, and 30 spent in looking forward to Thursday, Friday, and Saturday, October 31, November 1, and 2 (State Teachers' Convention).

NOVEMBER

- 5—A half holiday enjoyed by each and every one—occasion: Nebraska's Diamond Jubilee.
- 8—Some girls decided to let their hair grow—they couldn't stop it.
- 12—Perry Garver, sleeping in 120, fifth hour study, was seen to clutch frantically for the football of his dreams.
- 15 and 16—Central High Players in "The Devil and the Cheese," leads by Kathleen McCaffrey and Dick Stockham—and how they could emote!
- 26—Juniors elected class officers—Frank Wright, president. It's getting to be the famous Wright family, all Wright, all right!

DECEMBER

- 12-14—Opera, "The Fortune Teller"—all squawking.
- 23—Christmas Vacation to enjoy the literary edition of the *Register*.
- 25—Santa Claus comes to all the little freshmen and Madeline Johnson.

JANUARY

- 14—Central beat Tech at basketball—the worm turns purple.
- 16—Central Quill and Scroll banquet.
- 20-23—Final exams—copy can't.
- 24—January Senior graduation. Beginning of another new semester.
- 28—Disorder and noise prevailed in 215 marking the first of the 1930 senior home rooms.
- 31—O-Book drive started. Innocents besieged by fifty salesmen's war cry "Promised your O-Book ticket yet?"

FEBRUARY

- 7—It was publicly announced that Lieutenant-Colonel Bill Gordon bakes the most delicious, flaky-crust ed apple pies. Need we say anything else?
- 14—Valentine's Day—when puppy love barks loudest. Or have a heart.
- 20—Junior Honor Society Banquet—big attendance (free eats).
- 21—Betty Kelley was foolishly asked why ignorance is NOT bliss!
- 28—First case of Spring Fever reported.

MARCH

- 4—Parent-Teacher Association meeting to discuss the new gym and auditorium for Central. May we have many more of them!
- 5—Charles Saxton won the city rassing tournament in his weight.
- 13, 14, and 15—Road Show—in which boys were girls and girls were
- 25-27—Midterms—more mistakes made.
- 28—Glee Club concert at Chicago. Harry Stafford gave Chicago a break.

APRIL

- 1—Fools' Day, need we say to whom all it pertains? We could go on naming 'n naming many names who shine this day thereon.
- 5—See, oh, see!!
- 10—Oregon Trail Centennial Celebration—Central gone native.
- 11—"The Conflict," a gym exhibition. Junior Honor Society mass meeting. Count noses and be ashamed.
- 13-17—Spring vacation—more vacating of seats.
- 29—French play. Can you (under)stand it?

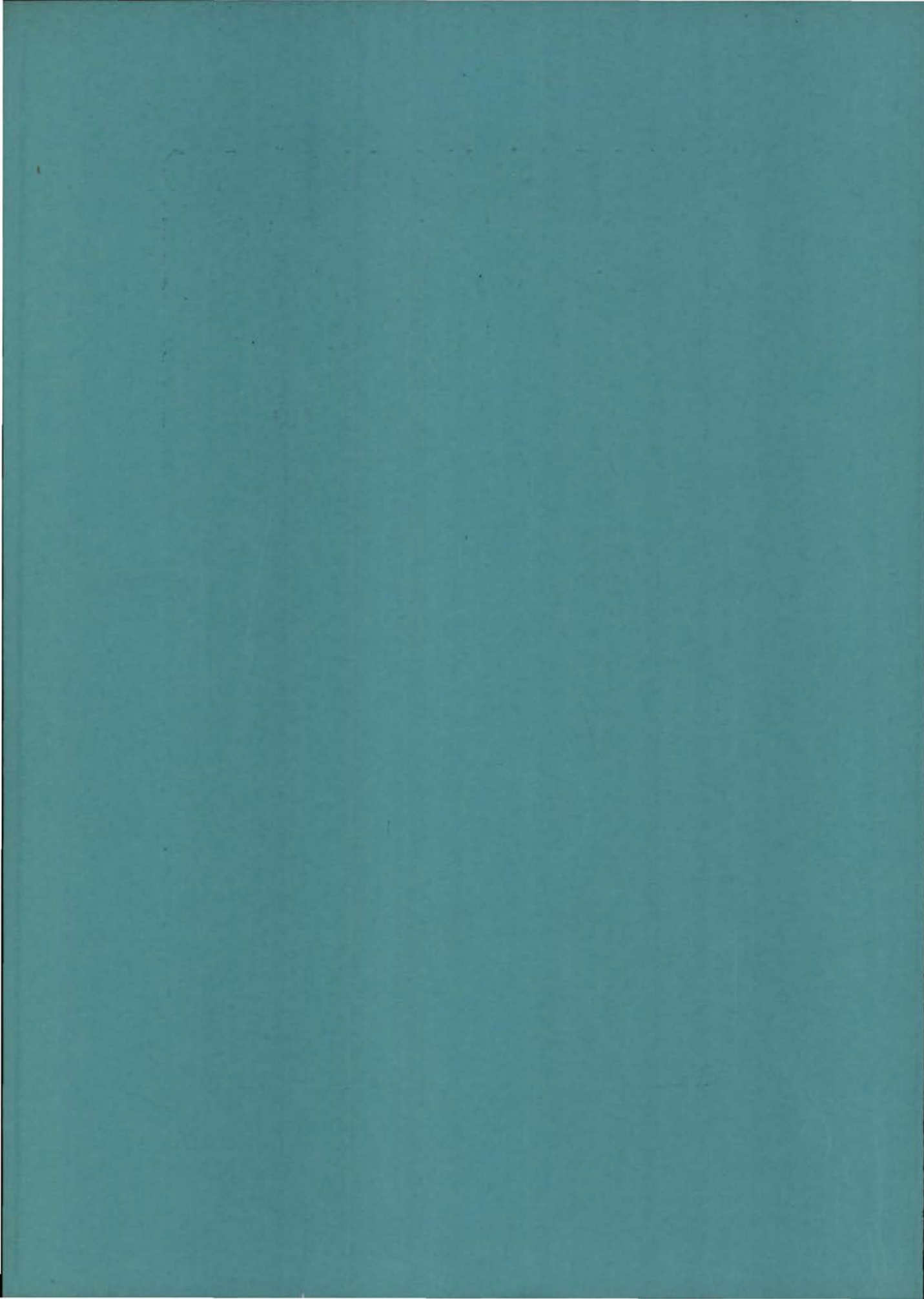
MAY

- 16, 17—Senior play, and how seniors played.
- 29—Last day of school. Senior home room had not yet adjourned except by the secretary's automatic means of so dispersing it.

JUNE

- 2, 3, and 4—Final exams—a few, very few, fortunates gloated, namely, Barrett Hollister.
- 4—Boys to camp—good riddance.
- 6—Girls to camp—bad rubbish!
- 12—Last day of school—the day of daze.
- 13—Visitors day at camp—gone Valley.
- 14—Senior graduation—cap and gown.







*B. Hollister Rayman W. Baird W. Ramsey R. Johnson H. Saxe Guiou A. Davis Byron Row
M. Johnson V. Baird Collins Moran Chait Harrington Welsh Cohen Duve Dansky Waterman
Martin D. Hughes Chadwell Marsh Thomas I. E. Hansen Hollcraft Garver L. Harriss Fischer
D. Barber Howley
Tedrow Draney Hildebrand Hindman Searle Lehmann Weber Tillotson Small V. Jones M. Niles
Reuben McBride
Not in picture: Carman Zink*

National Honor Society

PICTURED above are Central's leading students, her young men and young women of affairs, her 1930 addition to the membership of the National Honor Society. Scholastic excellence alone throughout their four years of high school did not qualify them for this highest of Senior honors; it served as a starting point. With this each member had to possess a willingness to cooperate with his teachers and fellow students, an ability to lead, and a loyalty to Omaha Central. In short, those characteristics which prove so beneficial in later life.

The National Honor Society, as its name indicates, is national in its scope; its chapters numbering over 700. It seeks to reward in a small way the few who have excelled in their high school. It is the high school equivalent of the Phi Beta Kappa. Central takes a special pride in it because it was founded at the suggestion of our own principal, Mr. Masters, in 1921.

The announcement of this year's membership was made on the third of April by Mr. Hill, after a committee of the faculty had made a careful selection of the new members.

Central sends them on with the hope that they will all go out into the world and do big things, not merely engage themselves in amassing wealth, but actually help in raising the standards of our civilization, become leaders of men.



EPSILON CHAPTER

Harrison Schonberger Trobaugh Hackler Lazerowitz Scott Nielson Hornstein
 Kibby Severinson Corsen Holyoke Mills T. Baird Friedman Perkins Nash
 Harris Smith Gould Hansen Brosene Hurt Epstein Dansky Erickson
 Thichoff Holmatrom Hall Backstrom Simmons Chaloupka Silverman Sprague Garrotto

Junior Honor Society



DELTA CHAPTER

Moucka Carnazzo Smith Resnick Shoemaker Sunderland Carman Rose Elliott Horejs
 Foster Harrington Chandler Buchanan Brison Sandham Leon R. Brown Rosenbaum Hart
 Smith Fisher Ames Wood Heron Rhoades Reilley Busch Mullis Anderson Allen
 Oruch Crow Goldware Fore Rosenfeld Beranek Shaw Heald Fellman McCague Bedell



GAMMA CHAPTER

*N. Hollister Horwitz Frieden Reese Macken Young Eldridge Boyer Johnson Finlayson Robinson
Rosenstein Wright
Cox Goldner Fiala Corkin Hall Johnson McNowm Kingery Prohaska Robertson Gem Wong
Steinberg Thompson Martis
Niles Somberg Tretiak Maier Eggers Smith Watson Baird Goodlet D. Ramsey Wilcox Horn
Cooper Krcal
Ring Robertson Smiley Stander Rigg McCarthy Stovall Towel Hays Ripley Johnson Doll
Thurtell Miller*

Junior Honor Society

THE HIGHEST goal of the underclassmen of Central High School is to be a member of the Junior Honor Society. This society is an original Central institution, founded through the efforts of Principal J. G. Masters. The constitution, adopted May 28, 1923, provides for a general council of five faculty members who act as sponsors for this society.

The purpose of the organization is to recognize originality and high achievements in general and departmental work, to develop the student's opportunities, to encourage leadership in school activities, and to develop the student's character. There are three chapters, the Epsilon, the Freshman chapter; the Delta, the Sophomore chapter; and the Gamma, the Junior chapter. Ten per cent of each class may be selected for membership.

The requirements for membership are based on scholarship, leadership in the sophomore and junior years, service to the school, loyalty, and character. The members are annually elected by a faculty committee including the general council, the class sponsors, and three members-at-large. Active membership ceases at the end of a year's membership in that chapter, so a continued effort to keep membership is necessary. Graduates who have been members of the Junior Honor Society are considered as honorary members.

The officers of the society are the president, elected from the Gamma Chapter; the vice-president, elected from the Epsilon Chapter; and the secretary-treasurer, elected from the Delta Chapter.

The members for this year were announced by Miss Sara Vore Taylor at a mass meeting on April eleventh.



Horn Chait Fischer Wilcox Tuckman Moran Rose Smith
 Willmarth Johnson Kirkpatrick Carman Hansen Lehmann Jones Hawley Cathers
 Maystrick Draney Niles Adams Carter McFarland Duve Thompson Bradley Reuben
 Tedrow Hughes Greer Welty Ellsworth Welsh Hindman Cohen Dansky

Quill and Scroll

AS A RESULT of two elections held during the school year, thirty-six members of the Weekly Register Staff were admitted to the Alpha Chapter of the Quill and Scroll, the national honorary society for high school journalists. An election was held during each semester. In the first semester, fourteen members were selected and in the second, twenty-two.

The requirements for membership in the society are: first, distinction or outstanding work in journalism; second, rank in the upper third of the class in scholarship; third, recommendation by the instructor; and fourth, approval by the national supervisor of the organization.

Quill and Scroll was organized in April, 1926, at Iowa City by a group of high school journalism instructors for the purpose of recognizing and encouraging outstanding achievements in the field of journalism and allied subjects. In the four years, this organization has spread so that today it is international in its scope. There are now over four hundred existing chapters in the United States and England. These chapters have a combined membership of over eight thousand journalism students.

Quill and Scroll publishes a magazine of its own, the *Quill and Scroll*, which contains news of the various chapters and which is sent to each member of the society.

Nebraska members of the organization have an opportunity to meet each other at annual state conventions. The convention this year was held at Midland College, Fremont, Nebraska, on April fourth and fifth.



Simon

Saxe

Harriss

Stein

Debate

CENTRAL High School's Debate Team has completed one of the most successful seasons in the history of debate at Central. Miss Sarah A. Ryan, faculty sponsor and coach, molded a championship team around the two returning letter men, Rose Stein and Harold Saxe. Much of the credit for the fine showing of the squad is due to Miss Ryan, who willingly sacrificed a great deal of her time to coach the team.

The outstanding accomplishment of the Debate team during the season was the winning of the Midland meet, sponsored by Midland College of Fremont. In this contest, Central's forensic artists triumphed over twenty-three of the best debate squads of the state. Harold Saxe was awarded a one hundred dollar scholarship as a result of being adjudged the best individual debater in the tournament. The team was presented with a silver loving cup. Aside from this, Central led all the Omaha schools in the Missouri Valley. In the state tournament the team was not as successful. While it twice defeated Tech, the traditional rival of Central, it lost to North in the finals of the district tournament.

During the past season there was more interest manifest in debate by the student body of Central than for many years. Large crowds attended many of the debates.

The subject debated upon this season was: Resolved that the jury system should be abolished.



*Horn Austin Fischer Wilcox Chait Sandhagen Munkhof Tuchman Bartos Carman Faier Smith
Johnson Martin Leppert Kirkpatrick Lehmann Jones Hansen Dansky McFarland Tretiak
Cathers Draney
Thompson Hughes Cohen Adams Whitebook Patton Niles Howley Hindman Carter Maystrick
O'Hanlon
Tedrow Bradley Reuben Duve Sullivan Moran Ellsworth Rose Welty Margolin Greer Calvert*

Weekly Register Staff

FIRST SEMESTER		SECOND SEMESTER		
William H. Ellsworth.....	Managing Editor.....	William H. Ellsworth		
John Sullivan.....	} Associate Editors.....	} Dorothy Cathers		
Howard Rose.....				Richard Moran
Betty Willmarth.....				
Madeline Johnson.....				
Richard Zoesch.....	Sport Editor.....	John Sullivan		
Marian Duve.....	News Editor.....	Ruth Reuben		

EDITORIAL STAFF

John Sullivan.....	} Sport Writers.....	} William Austin	
Lois Hindman.....			
Pearl Dansky.....	} Copy Reader.....	} Dorothy Hughes	
			Howard Wilcox
Lucile Lehmann.....	} Proof Readers.....	} Lucile Lehmann	
Virginia Jones.....			
Sol Tuchman.....	Business Manager.....	Sol Tuchman	
Annie Tretiak.....	Advertising Manager.....	Evelyn Chaikin	
Harold Brodkey.....	Assistant Advertising Manager.....	Ethel Green	
James Bartos.....	Circulation Manager.....	James Bartos	
Herman Faier.....	Assistant Circulation Manager.....	Kenny P. Smith	
Marian Bradley.....	} Staff Secretaries.....	} Marian Bradley	
Lois Thompson.....			

REPORTERS

Betty Adams	Ruth Chadwell	Irene Howley	Nadine Patton
Milton Altsuler	Ruth Cohen	Peggy Kirkpatrick	Francess Rivett
Edward Barakat	Eileen Draney	Eileen Leppert	Harry Sandhagen
Ernest Bonacci	Marian Duve	Helen McFarland	Virginia Tedrow
Margaret Browne	William Eldridge	Jane Masters	Lois Thompson
Martha Calvert	Herman Faier	Edna Maystrick	Genevieve Welch
Wilma Carter	Bess Greer	Soren Munkhoff	Ruth Welty
Paul Carman	Isabella E. Hansen	Mary Niles	Florence Whitebook
	Lois Hindman	Lucy O'Hanlon	

ADVERTISING SOLICITORS

Margaret E. Anderson	Ethel Green	Bluma Neveleff	Arthur Spar
Harold Brodkey	Sadye Kohlberg	Henry Shafer	Marian Weinberg
Janet Graetz	Dorothy Margolin	Ramona Slosburg	



Tanner Harriss Ellsworth Goulding Planteen Saxe Moran Olsen Johnson Ramsey
 Thompson Bradley Lynch Carey Cohen Martin Johnson Cooper Foltz Macken Kirkpatrick
 Patton Duve Lloyd Thrush Hughes Adams Whitebook Sullivan Marsh Howley Hindman Helgren
 Reuben Dansky Margolin Jones Lehmann Tuchman B. Hollister Rose MacHosey Epworth Niles

O-Book Staff

EDITORIAL

Editor-in-Chief Barrett Hollister
 Associate Editor Lucile Lehmann
 Honors Editor Harold Saxe

ASSISTANTS—

Marian Goldner Dorothy Hughes
 Byron Goulding Dick Moran John L. Sullivan
 Dorothy D. Thrush
 Club Editor William Ramsey
 Activities Editor Ruth Cohen

ASSISTANTS—

Marian Bradley Lois Hindman
 Pearl Dansky Irene Howley
 Dorothy Margolin Mary Niles
 Lois Thompson

Write-Up Editor Dick Moran

ASSISTANTS—

Marjorie Cooper Elizabeth Foltz
 Marian Duve Ruth Reuben
 William Ellsworth Howard Rose John L. Sullivan
 Dorothy D. Thrush
 Marjorie Tillotson

Feature Editor Madeline Johnson
 Assistants Peggy Kirkpatrick, Miriam Martin

Art Editor Jay Planteen
 Assistants Senior Art Class

BUSINESS

Business Manager Sol Tuchman
 Circulation Manager William Bledsoe
 Assistant Circulation Manager Meredith Johnson
 Advertising Manager Howard Rose
 Assistants Dick Moran, Florence Whitebook



Clark Herring Johansen R. S. Brown Ellsworth Stafford J. Wright DeVore Ernst Row
 Kugler Alexander Finlayson Organ Kise M. Johnson Bloom R. Johnson W. Brown Segur Thatcher
 Tedrow McCague Thomas Haugh Best Crook Fetters Tillotson Clopper C. Hall
 Welty Fair Goldner Gratz Ames
 A. Webster Rubendall Shoemaker N. McCulley M. Maier Corkin English Edwards Haskell
 V. Jones Farber Adams Russell Isbell Foster Hokansen Maier C. Webster

Music Honors

CENTRAL'S music department is commanding greater admiration each year. This is due in no small degree to the efficiency of the instructors: Mrs. Carol Marhoff Pitts, Mrs. Elsie Howe Swanson, Mrs. Irene Haskins Jensen, and Mr. Henry G. Cox. Mrs. Pitts is especially responsible for the recent accomplishments. It has been her remarkable ability and unceasing effort which have raised the Senior Glee Clubs to their present high-water mark of excellence.

As proof of their merit, fifty members of the glee clubs were invited to sing at the convention of the National Music Supervisors, which was held in Chicago on March 28. Aside from this, Nebraska's entire representation in the National High School Chorus was chosen from Central. The ten Central students who sang in this chorus were: Ruth Welty, Mariel Russell, Marjorie Jene Maier, Marian Goldner, William Ellsworth, Robert Johnson, Jack Wright, Tom Organ, Fred Segur, and Harry Stafford. The music department again received national recognition when George Harrington and Glendora McLean represented Central High in the eastern and western sections of the National High School Orchestra.

Besides participating in these activities, the department produces the Opera in the fall; every spring it enters the Nebraska State Music Contest at Lincoln. Last year, Central tied with Lincoln for first honors. In view of these accomplishments, it is easy to realize why Central is proud of her music department.

Central High Regiment



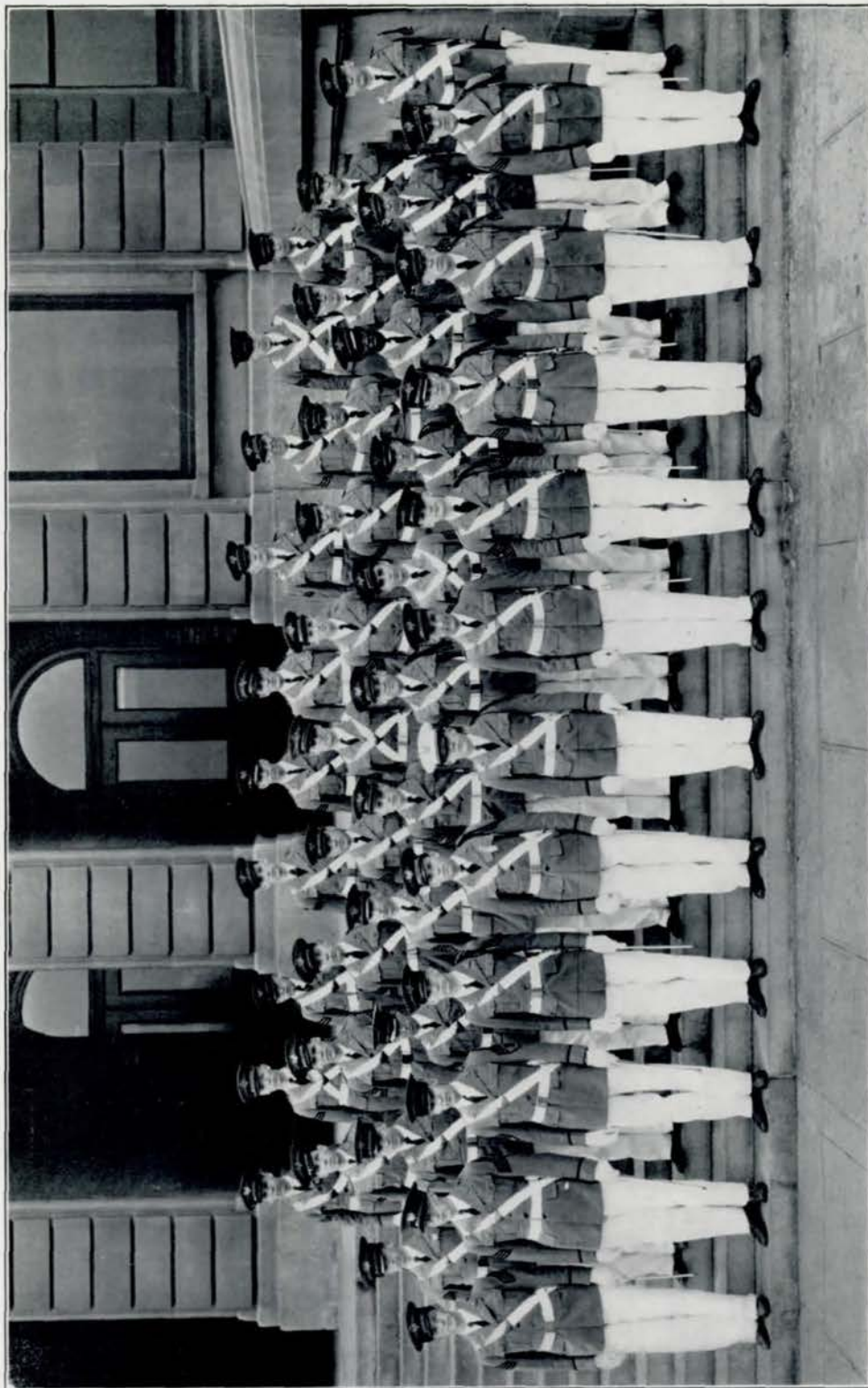
THE responsibility of being the Lieutenant Colonel of the High School Regiment was not misplaced in the choice of our present head, William E. Gordon. His capability and his natural ability as a leader show distinctly that he has been a great asset to one of the school's most important activities, and we all appreciate the work and effort he has put forth for the advancement of the Cadet Regiment.

William E. Gordon

DURING the past eleven years of its thirty-eight years of existence, the Regiment has been under the capable leadership of the Commandant, F. H. Gulgard. The responsibility incidental to the military training of so many students for such a period of time marks him as a man of great executive ability. He has led the regiment through another big year, and to him, therefore, is due much of the credit for its achievement. He is held in high esteem by the officers and men in the regiment.



F. H. Gulgard



CADET OFFICERS' CLUB

Cadet Officers' Club

- Lieutenant Colonel*—
William E. Gordon
- Major First Battalion*—
David H. Moriarty
- Major Second Battalion*—
William J. Baird
- Major Third Battalion*—
John M. Gepson
- Captain and Adjutant*—
Jack Woodruff
- Captain and Ordnance*
William C. Ramsey, Jr.
- Captain Company A*—
Charles F. Schwager, Jr.
- Captain Company B*—
Warren H. Smith
- Captain Company C*—
Ralph Johnson
- Captain Company D*—
Rodney Bliss
- Captain Company E*—
John S. Randall
- Captain Company F*—
J. Allan Davis
- Captain Band*—
Milton J. Mansfield
- Captain and Quartermaster*—
Francis R. Byron
- Captain and Commissary*—
William M. Knott
- Captain and Personal Adjutant*—
Morton Rayman
- First Lieutenant and Adjutant, 1st Bn.*—
Gaitha Pegg
- First Lieutenant and Adjutant, 2nd Bn.*—
Ralph C. Moore
- First Lieutenant Company A*—
Sidney Stewart Kent
- First Lieutenant Company B*—
William T. Bledsoe
- First Lieutenant Company C*—
Byron W. Goulding
- First Lieutenant Company D*—
Howard H. Fischer
- First Lieutenant Company E*—
Barrett Hollister
- First Lieutenant Company F*—
Robert Pilling
- First Lieutenant Band*—
Tom Organ
- First Lieutenant and Aide*—
Lawrence M. Nelson
- Second Lieutenant and QM., 1st Bn.*—
Jack Drew
- Second Lieutenant and QM., 2nd Bn.*—
J. Lawrence Cooke
- Second Lieutenant and QM., 3rd Bn.*—
Ted Helgren
- Second Lieutenants Company A*—
Thomas P. Patterson
John Ralph
- Second Lieutenants Company B*—
Ferdinand G. Falcone
Jean C. Whinnery
- Second Lieutenants Company C*—
Eugene B. Carrigan
John Kvenild
- Second Lieutenants Company D*—
Stanford C. Nelson
Miles B. Houck, Jr.
- Second Lieutenants Company E*—
Donald W. Cheff
Louis B. Drew
- Second Lieutenants Company F*—
Don F. Gipson
Harold B. Brodkey
- Second Lieutenants Band*—
C. Lowell Harriss
Flavel Wright
- Second Lieutenant Staff*—
John C. Kennedy



*Rich Goldstein R. Brown Geisler Johnson Smith Levine Moore McCleneghan
Gepson, Captain Knapple Woodruff Ranney Smith W. Baird McNowen Patterson
Pilling Goulding Moriarty Randall Gordon Knott*

Engineers

THE ENGINEERS' SQUAD is composed of commissioned and non-commissioned officers whose duty it is to prepare the camp so that all may be in readiness upon the arrival of the Regiment. Some of their duties are digging pits, painting poles, driving stakes, erecting the water tower, and pitching the tents. In addition, this year, the engineers help lay the concrete in the addition to the cook shack. Generally speaking, they are responsible for the laying out of the camp to the best possible advantage for the comfort and welfare of the cadets immediately upon their arrival.

Several days before the Regiment leaves Omaha, the Engineers are busy staking out the camp and getting the place in tip-top shape. After camp, theirs is the task of cleaning up.

Coach F. Y. Knapple, who is in charge of the squad, evidently is a believer in the old adage that all work and no play makes the cadet a dull fellow, as many privileges are extended to the engineers, not the least of which is that of exceptionally good food prepared under the personal direction of Chef "Papa" Schmidt. Then, too, they are entitled to go to the old swimming hole for a swim in the afternoon and to Valley in the evening.

The personnel of this year's group of Engineers compares favorably with that of previous years, and will, we feel confident, put over a great camp.



Zoesch Wright Bledsoe Ramsey Baird Everett Garver Johnson Haynie

National Athletic Honor Society

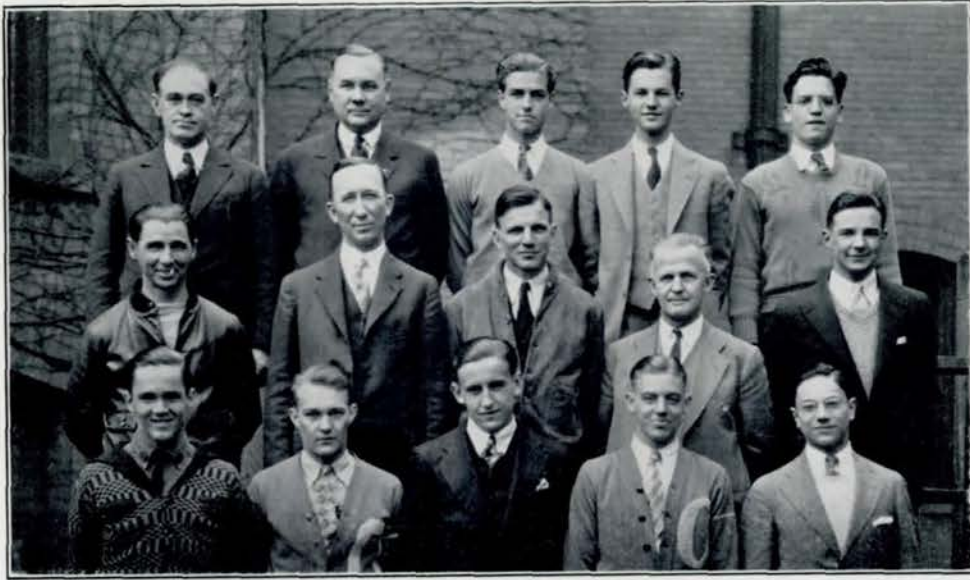
TEN MEMBERS of Central's major athletic teams were selected for membership in the National Athletic Honor Society during the past year. These men were: William Baird, Mervin Everett, Perry Garver, William Bledsoe, William Ramsey, Ralph Johnson, Jack Niemann, Frank Wright, Kenneth Haynie, and Richard Zoesch.

All of these men were prominent in athletics at Central during the last year. Baird was captain of the Central basketball team, and he was chosen on the Weekly Register all-city and all-Missouri Valley teams. Mervin Everett, captain of the Central baseball team, was a guard on the Central basketball team and first baseman on the baseball team. He was chosen all-Missouri Valley guard on the Weekly Register selections.

Perry Garver, state golf champion last year, was co-captain of the Central golf team as well as halfback on the Central football squad. William Bledsoe was co-captain of the Central track team and end on the football team. Ralph Johnson was center on the Central football team and an infielder on the baseball team.

Jack Niemann was a member of the Central track team for two years and was an end and halfback on the Central football team last fall. Frank Wright was regular quarterback on the Central football team and has been a member of the Central track team for the past two years. Kenneth Haynie was captain of the Central football team and regular catcher on the baseball team. Dick Zoesch was a star forward on the Central basketball team.

Besides starring on athletic teams, these men all maintained a high standard of scholarship.



<i>Mr. Barnhill</i>	<i>Mr. Schmidt</i>	<i>Garver</i>	<i>Bliss</i>	<i>Bledsoe</i>
<i>Mr. Burdick</i>	<i>Mr. Nelsen</i>	<i>Mr. Knapple</i>	<i>Mr. Bedell</i>	<i>Baird</i>
<i>Saxton</i>	<i>Price</i>	<i>Haynie</i>	<i>Everett</i>	<i>Faier</i>

Coaches and Captains

FOOTBALL—With a scarcity of letter men, the Central High football team, tagged all year by an injury jinx, did not win a single game. The Eagles should be given credit, however, for putting up one of the gamest fights in the history of Tech-Central rivalry. Haynie, Weiner, Johnson, and Wright were the outstanding stars.

BASKETBALL—Central's basketball team finished a rather unsuccessful season. The Eagles lost Dick Zoesch, star forward, in the middle of the season, and they experienced some difficulty in winning later. Everett and Captain Bill Baird were the other outstanding men.

WRESTLING—Central won one individual city championship and two state titles. Captain Charles Saxton won the city and state titles in the 145 pound class and Al Cattano captured the state 115 pound title.

SWIMMING—Central lost only two dual meets and was second in both the city and state meets. Jack Epstein, Bill Kelley, and Bud Swanson were outstanding.

BASEBALL—Central is represented with another strong baseball team, and the Eagles are gunning for the city title.

GOLF—Bliss and Garver are again leading Central to great heights in the pill chasing loop.

TENNIS—Central is represented by an inexperienced team, but these boys are making trouble for many squads.

TRACK—Coach J. G. Schmidt is again in the field with a strong team, and under the leadership of Bledsoe and Price, they are striving for the city title.



*Baird Tebbens Anderson Towl Johnson Wrenn Hughes Brown Larson
Porter F. Young Garrotto L. Holst E. Holst Sprague Rigg Schnackel Boucher*

Girls' Athletic Association Awards

GIRLS' Athletic Association awards from the Women's Division of the State League were presented to Central Girls at the Gym Exhibition on April 11. The State League is attempting to standardize girls' athletics and to promote ideals of health and sportsmanship in Nebraska by an elaborate point system under which girls are given points for participation in organized team sports.

The first two awards that the Central Girls' Athletic Association provides for are local, the numeral and the purple "O." The First State League award is a red triangle, on which there are the letters N. L. A. A. standing for Nebraska League Athletic Association. The highest state award is a red triangle that fits behind the first award, making a six-pointed star, which is called the State League Emblem.

Since joining the league in the spring of 1929, Central has created a great deal of enthusiasm in girls' athletics. State League Emblems were won this year by Betty Anderson '30, Dorothy Hughes '30, Irene Johnson '30, Charlotte Towl '31, and Lillian Wrenn '30. State League Awards were earned by Mary Brown '31, Eleanor Larson '31, and Betty Tebbens '31. Central "O"s went to Julia Baird '31, Virginia Boucher '32, Eva Mae Livermore '31, Dorothy Porter '31, Dell Shaw '32, Evelyn Schnackel '31, and Frances Young '30. Numeral awards were to Mary Rigg, the "31", Nellie Garotto and Lillian Wenninghoff, the "32", Lorraine Fletcher, June Holst, Trudell Holst, Evajane Sinclair, and Mary Sprague, the "33".



*Edwards Adams Anderson Rigg Brown Baucher Schnackel Horein P. Young F. Young
Livermore Baird C. Masters*

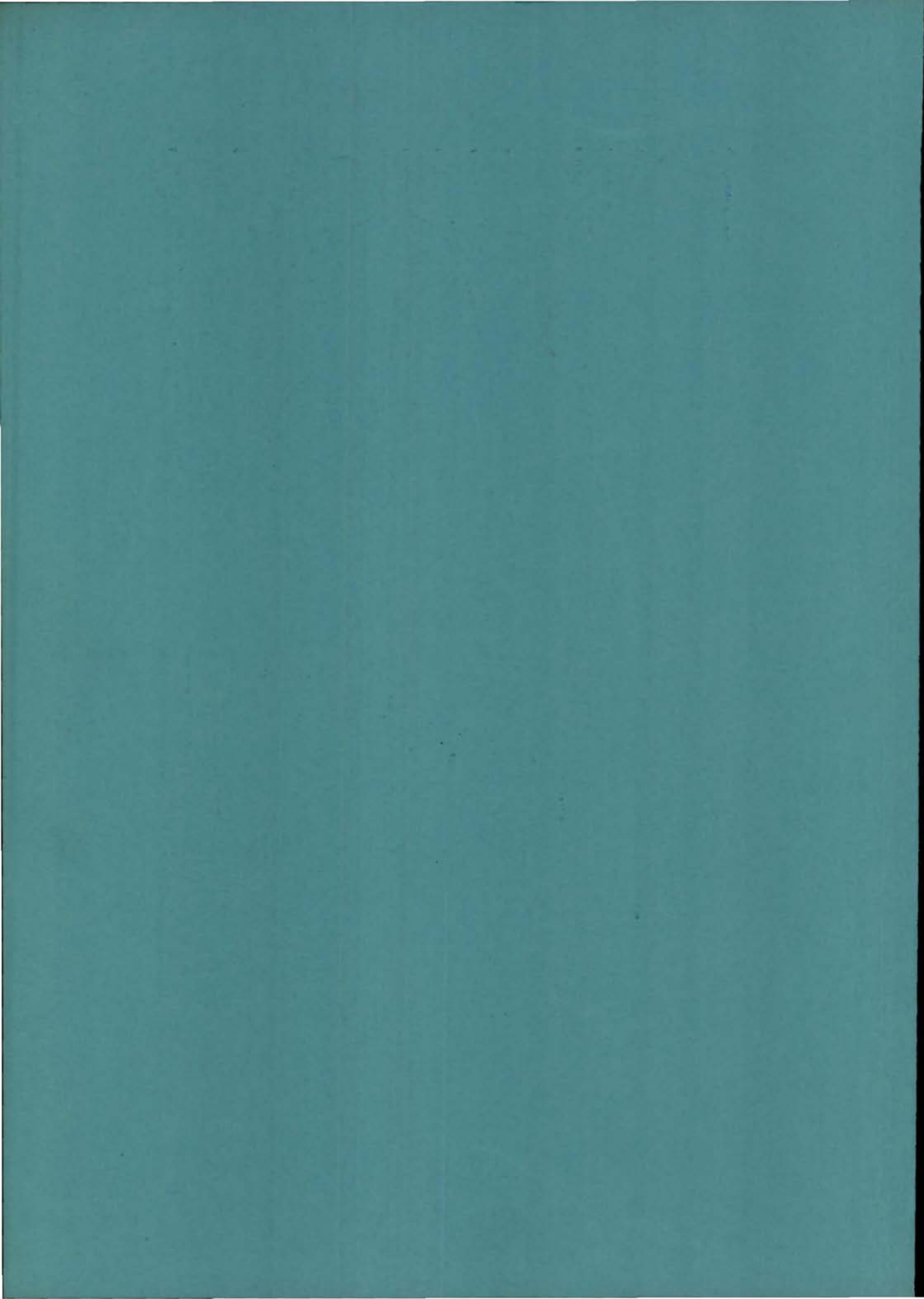
Girls' Golf Tournament

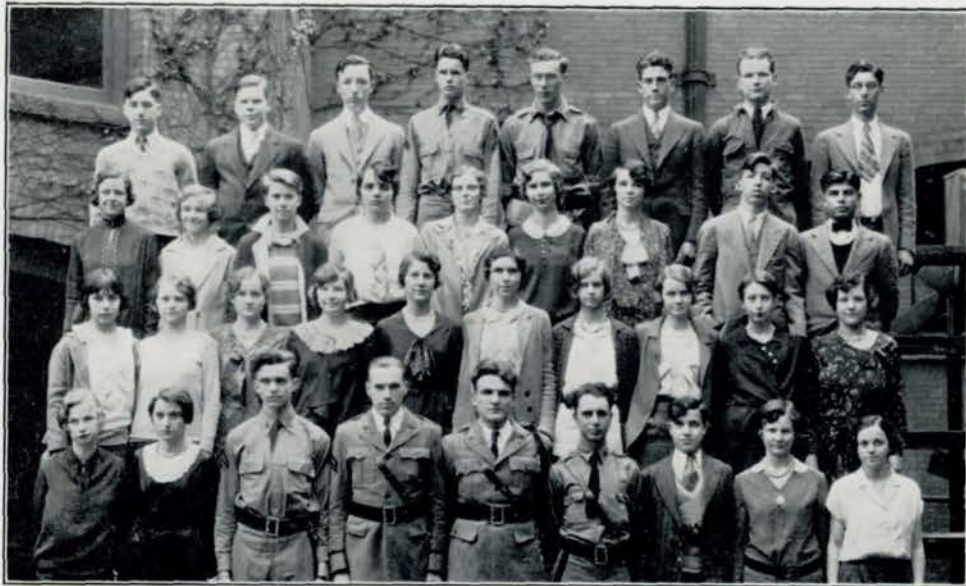
SIXTEEN girls signed up for the 1930, or the second successive, golf tournament directed by Mrs. Glee G. Case, physical education instructor, for Central High School girls. Mary Rigg '31, Alice Webster '32, Patsy Young '32, Colleen Masters '32, Betty Adams '30, Mary Edwards '30, Llois Horeis '32, Frances Young '30, Mary Brown '31, Virginia Boucher '31, Evelyn Schnackel '31, Betty Anderson '30, Julia Baird '31, Betty Randal '32, Eva Mae Livermore '31, Ceba Webster '32, who were the girls entering the tournament, were paired off into two flights according to scores, and the elimination match games proceeded by holes on the first nine holes of the Dundee Golf Course.

A silver loving cup, the Mary B. Levings trophy, is presented each year to the winner of the several eliminative flights. If the same girl wins the cup three years in succession, it is hers to keep. Both the champion and the winner of the second flight are given Central golf medals as permanent possessions.

Points were received toward Girls' Athletic Association awards by all the girls who entered the tournament and came out for eight practice games. Although organized golf is a comparatively new activity at Central, it is fast becoming a favorite and one of the girls' major sports.







Central Committee

<i>Race</i>	<i>Musgrave</i>	<i>Young</i>	<i>McClure</i>	<i>W. Smith</i>	<i>Collins</i>	<i>Woodruff</i>	<i>Rayman</i>
<i>Cooper</i>	<i>Beauchesne</i>	<i>Claassen</i>	<i>Higgins</i>	<i>M. Smith</i>	<i>Watson</i>	<i>Baird</i>	<i>W. Flax</i>
<i>J. Wood</i>	<i>E. Quick</i>	<i>S. Kilbourne</i>	<i>Johnson</i>	<i>Rhoades</i>	<i>M. Hughes</i>	<i>Fetters</i>	<i>McCulley</i>
<i>Manley</i>	<i>Droste</i>	<i>Lindquest</i>	<i>Harris</i>	<i>Schwager</i>	<i>Mansfield</i>	<i>Hart</i>	<i>Foltz</i>
							<i>Willmarth</i>



Titians

<i>Mattocks</i>	<i>Cummins</i>	<i>Hulsebus</i>	<i>Wilcox</i>	<i>Simmons</i>	<i>Craig</i>	<i>Ashwood</i>
<i>Brown</i>	<i>Moriarty</i>	<i>Brott</i>	<i>Patton</i>	<i>Love</i>	<i>Peterson</i>	<i>Bock</i>
<i>Carter</i>	<i>Fitch</i>	<i>Oehlerle</i>	<i>Hanley</i>	<i>Thornton</i>	<i>Lindleaf</i>	<i>Snyder</i>
						<i>McCague</i>



Student Control

Ward Thatcher Rhoj Cunningham Dorsey W. Kelley S. Nelson Randall Price Knott
J. Drew Zink Eilers R. Young Ross E. Clarke R. E. Johnson Crawford E. Brodkey
Frohardt Russell M. J. Maier Love Morton Hungate Weber Juckniess Forbes
Kirshenbaum Drake
Lynch Campbell Gross Briggs D. Barber Clapper Mattocks Perry Dean Turnbull



Monitors' Council

Brodkey Moran Saxe Hindman Dansky
Searle Barber Small Waterman Duve Bradley

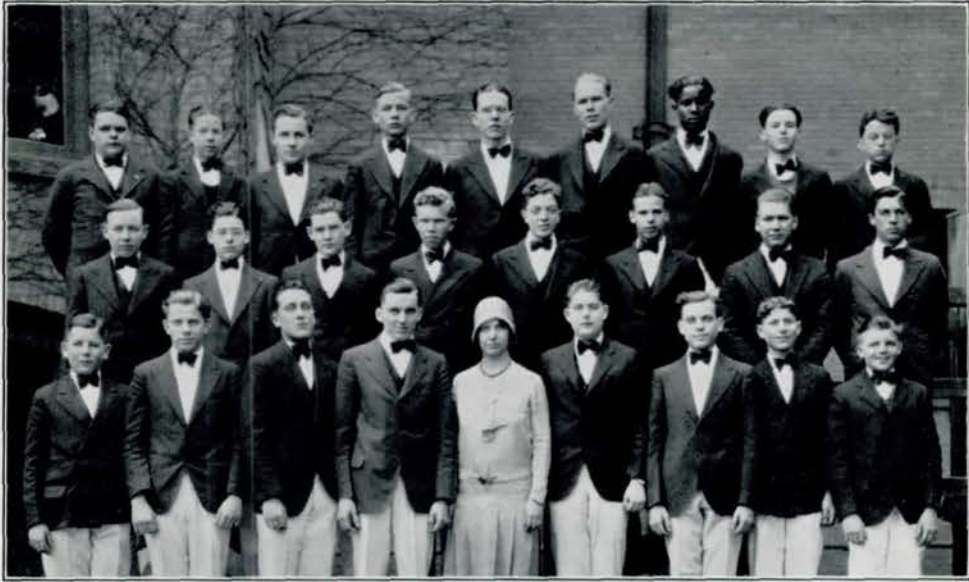


Tomlinson Dansky Horeis Robertson Anderson M. Smith Cain Hall Corkin Kennedy
 Haskell Isbell Kirshenbaum
 Larson Waterman Hughes Tebbens Edwards Melcher Cox Ring Allardyce A. Webster
 Crew Rubendall
 Muldoon Swartzlander McCargar Mayer Gibson English Bilunas Nelson Goldner Graetz
 Westerfield Farber Van Riper
 Bartlett Adams Clapper Love Tillotson Fair J. Johnson Hungate Wright Crook
 M. J. Maier Carson C. Webster Erion
 Tedrow Draney Hokanson M. Maier Jones Hopson Hansen Greer Cady Thomas
 Haugh McCague Campbell

Girls' Senior Glee Club

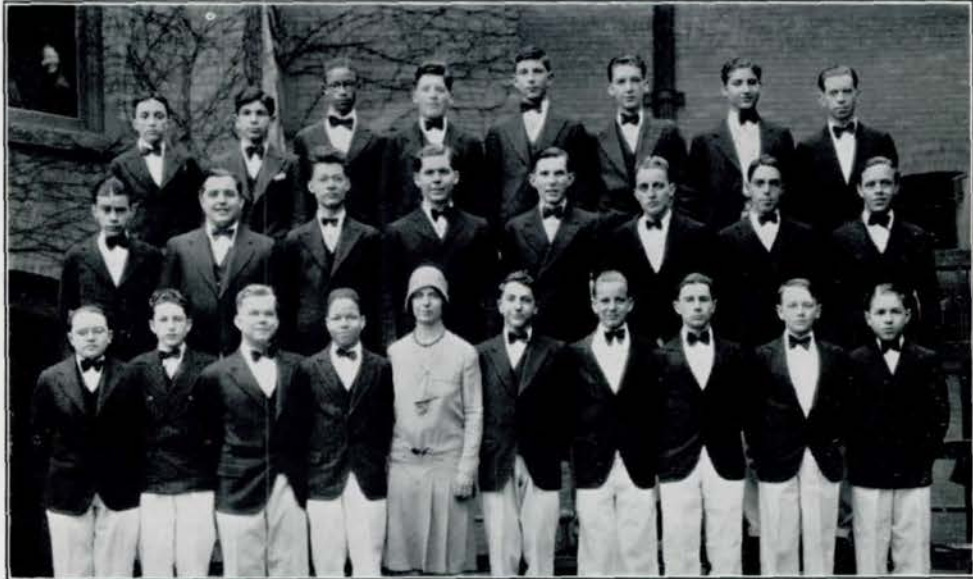


Taylor Chaloupka Eaton Watson Higgins J. Mullis Wetherell Horn Briggs Richardson
 Pehle
 Robertson Wigton Sawtell Lipsey Kelly Fetters Clark Best Russell Beall Kohlberg
 Cattania Kuenne Bartson Chandler Evans White MacNeal Thompson Ashwood Foster
 McBride Sroboda
 Havlu McCulley Dean Ames Tiffany Welsh Morton Welty Helgren Shoemaker Meyers
 Craig



Boys' Senior Glee Club

*Dunham Clark Herring Bloom R. Johnson M. Johnson B. Gordon Ernst D. Ramsey
 Finlayson Pizer Fleming V. Baird Ellsworth Fry W. Brown Lorenzen
 Alexander Fischer Macumber Segur Mrs. Pitts G. Shotwell A. Davis Dorinson Helgren*



Boys' Senior Glee Club

*J. Money Carnazzo Lee Johansen R. S. Brown Kise Frankel DeVore
 Moshier Wright Hall Stafford Draney Cissel Hoisington Underwood
 Kuglar Brown Thatcher James Mrs. Pitts Bercovici Jones Thompson Reavis Clark*



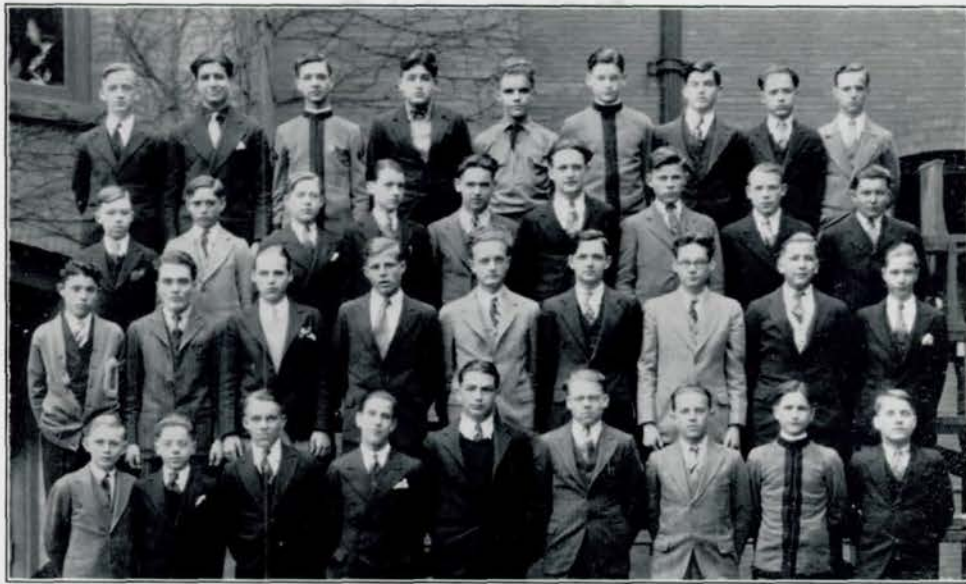
Girls' Junior Glee Club

S. Robertson Hanley Gross Mock Travers Collins Gilinsky Fay Carlin McCawley
McMillan Weinstein Cohen
M. Johnson Kvetsky Sucha Newton Chandler Hughes McCaffrey Livermore Runyon
Wood Quick Sprague Shuck Atchison
Garrotto Addy Mayer Dunn Thall Beeson Wood Gardner U. Gross Lewis Pounds
MacNeill Wentworth
D. Shrader Sooman Fellman Noxon D. Heintz Heintz Margolin McKenzie D. Wood Carlson
Rothkop McCreary Manoli Oruch



Girls' Junior Glee Club

P. Greer B. Myers Sanden Koons Beranek P. Herrick Schellberg Anderson Graham
Loneragan E. Johnson
Moon McCaw Gould Wood Scott V. Greene Tuchman Neafus Ashby Horwitz
Heald Fangman Trussell V. Rhoades Hinshaw Mortensen Sternberg D. Johnson Turnbull
Kingsbury Loosemore
Lynch Dodds Muil Osborn J. Thomas Shover E. Rhoades Hoffer D. Brown D. Smith



Boys' Junior Glee Club

C. Thorsen Tuchman Bartos Effenbaum Greer E. Sunderland Forsythe Barton Horeys
D. Taylor H. Bentley Mossman Loach G. Miller H. Thomsen Alden W. Larson Harley
Spar Karpen Rachman Riddle Nelson Horkey V. Sunderland Hessler Barber
Storms Butts Houston H. Ward I. Douglas Kissel Moucka Brown Zimmerman



Freshman Glee Club

Argenbright Robertson Hall Koory M. Dodds A. Indoe Lininger Foles Yates Backlund
Artison Spruings Butts Perkins C. Rachman Doan Fry Zuzman
Hornstein Corson V. Simpson Mercer Groat
Blundell M. Harris Henningson Benson Palmer Eldridge Meyers Bishop Stanbrogh
Lush Deeter Birvull Sexton Stalcup McMartin Moran
Robinson Ashwood Tenenbaum Lehman E. Kirkpatrick E. Pinder A. Pinder Eller Welch
Irwin Moorman Moriarty Baum Seidl Swell



Mathematics Society

*Bedell Harrington White Hayward Higgins Herbert Wrenn Riley Love
 Livermore McCaffrey Hansen Herron Welsh Watson D. Hughes Myers Steinberg
 Thompsen Goldwore H. McCague Rosenfeld Haugh Small Hopson Eggers Reuben Dansky*



Mathematics Society

*Frieden Goldwore Dorsey Kingery Lindquest Naughtin H. Saxe Shirk R. Johnson
 Bercovici Crawford Rasmussen McNoun L. Harris K. Smith Moran Macken R. Brown
 B. Brown Finlayson Buell Hall Collins B. Hollister V. Baird Wickstrom R. Kent
 N. Hollister*



Speakers' Bureau

*Bourke Standeven Sunderland McNown Bloom Anderson Goodlett Howritz Fleming Pilling
 Horowitz G. McCague Robertson Cain White Walrath Correa Morgan Braun Craddock Christie
 M. Johnson Hayward Bedwell Hofer Rhoades V. Jones Pizer Alexander Shrier Wiemer
 Goldware Ashby Kerr W. Ramsey Buell Saxe Harriss N. Hollister Hamilton*



Speakers' Bureau

*H. Brodkey Rosenstein Collins Ellsworth Kingery Cowdery Tilford Impey
 Groupe Harris Homann Ross Lippold Crawford B. Hollister
 Race Bowman Binkley D. Saxe D. Ramsey R. Kent Loring J. Pilling
 Sherman Beauchesne Wood H. Kelley Martin Blundell McCaffrey Brown Reuben*



Inter-Club Council

<i>Young</i>	<i>Cheff</i>	<i>H. Saxe</i>	<i>W. Ramsey</i>	<i>Fisher</i>	<i>Sandham</i>		
<i>Race</i>	<i>Doten</i>	<i>Jonas</i>	<i>Collins</i>	<i>B. Hollister</i>	<i>Musgrave</i>		
<i>McCague</i>	<i>Niles</i>	<i>Hopson</i>	<i>Baird</i>	<i>McCulley</i>	<i>McKenzie</i>	<i>Hughes</i>	<i>Lynch</i>



Project Committee

<i>Evans</i>	<i>Rhodes</i>	<i>Walters</i>	<i>Corkin</i>	<i>Hannibal</i>	<i>Huckert</i>		
<i>Koom</i>	<i>Haugh</i>	<i>Miss Clark</i>	<i>Browne</i>	<i>Cropper</i>	<i>Ross</i>	<i>L. Niles</i>	
<i>Crow</i>	<i>McCague</i>	<i>Livermore</i>	<i>Eggers</i>	<i>Hopson</i>	<i>Long</i>	<i>Spaulding</i>	



Forensic Society

Goldstein J. Harris Wagstaff Kingery Goldware Rosenbaum Lintzman Anderson Kort
 Frumkin Carman Kaplan Tilford Long Simon Rosenstein Sommers Pizer Shrier
 Rubendall DeLong J. Marks Thomas Brodkey H. Saxe D. Saxe Leitch McAllister Lazerson Cherniss
 Oruch Goldware Rosenfeld Margolin Lippert Vasak Dolgoff E. Silverman McCreary
 Silverman



Greenwich Villagers

Bogard Mayer R. English Watson Tanner Horn A. Peterson
 Marsh R. Gross M. F. Hughes Planteen Nixon Jensen Stringer
 Macken Shoemaker Dugdale Reuben Lynch Lloyd Hess Ellis Miller



Girls' Natural Science Club

Elsasser Bush Stringer Lindleaf White Baird Livermore Carter Wolfe
Heald Lipsey Hayward Abbott Beeson Reilly Barber Leppert Mullix Somberg
Greene Nall Goldware Ripley Perliz E. Shaw Adair Thompson M. Niles Thurtell



Biology Round Table

Fair McClure Lindquist Haas Jonas Ranney
Rose Hoisington Clark Eggers Drake Wickstrom
Johnson Young Carmen Anderson McCleneghan Brown



Le Cercle Francais

*Fore Leppert E. Hayward Guion McDonald Sherman Droste Ellis Fellman Manley
 Muldoon Young Fetterman Patton Welsh Shaw Owen Fregger Dolgoff Thurtell
 Erion Barber Kelley Beauchezne Tillotson Small Claassen Hokansen Peterson M. Niles
 Moore
 Willmarth Condon Bolin Martin McCulley Welty Wood McCaffrey Kuenne Thomas
 Draney*



Gentlemen's French Club

*Temin Musgrave Houck S. Johnson Ralph R. Doud R. Davis
 L. Nelson Randall Dorsey Thorsen L. Hurriss Baird Kerr Compton
 Cheff L. Cooke Collins Bliss Eldridge W. Ramsey Schwager W. Smith*



Los Sabios

W. Johnson Wilcox Kolbitz Hiddleston Doten R. Elliott J. Johnson Taylor Barnhart Drahos
Horowitz Jones Mecham Rutter Rosenstein J. Clapper M. J. Clapper B. Anderson Patterson
Ferer Whitebook Eaton Wrenn Garver Goulding Woodruff English Weber Tillotson
Erickson Tedrow Macken Svoboda Severinson V. Jones Herbert Kastman Roucek
McNeil Wetherell Hansen T. Brown Mortis



Der Deutsche Verein

Guenther Dimpke Maier Goldstone Charney Chait Moody Luserowitz
Swengil Shaffer Sussman Hollcroft Clarkson Baroch Holden Snyder
Nielsen Nelson Quinn Epstein Breitenkamp Hornstein Miller



Latin Club

Wright Drake Wickstrom Finlayson Prohaska Rees Rosenstein Doud Leon
R. E. Johnson Young Planteen Ross Rutter Watson Armstrong Guiou Ring
Goldware Ashwood Gearhart H. Niles McCarthy Higgins C. Smith Chandler Robertson Rubendall



Gym Club

Tebbens Towl Baird Brown Schnackel Boucher Guiou Linville
Larson Anderson Wrenn Baird Johnson Weber Rigg Hindman Livermore
S. Catania Mrs. Case Bexten Hughes Fetterman Richardson Adair Cathers Craig



Central Colleens

Bedell Huckert Swoboda Musil Barock Martix Leon Nall Fregger Stalcup
Wear Rimerman Niles Boucher R. Christianson E. Christianson White Stovall G. Chatoupha
Feblowitz Binder Feblowitz Dolgoff Lindleaf Welsh Welsh McCulley Shaw Dygert
Fitch Goldware Busch Johnson Beranck Kavan Tillotson Small Adams Thompson Slosburg



Central Colleens

Leppert Hayward Guion McCaffrey Leu McKenzie Nall Smith Turner Jacobow
White Patterson Smiley Watson Higgins Cox Cohen Cooper Dansky Heald
Kirshenbaum Phillips Allardyce Hindman Hansen Lawson Hess James Frohardt Corkin
Turkel Quick Foster Rosenfeld Kvetensky Welty Greer Hopson Thomas Draney



Central Colleens

*Dinke Harris Kilbourne Smith Horeis Chadwell Wood Wighton Wrenn Clapper
 Patterson Finlayson Hiller Smith Carter Jorgensen Thompson Murdock Newton Holmstrom
 Niles V. Hallcroft Olson Marks Thomas Hayward Snider Haugh H. McCague Corkin
 Rothkop Miller Niles Koom Forehead Ohlwager Balunas Wolfe Silverman Millman*



Central Colleens

*Robertson Clarkson Searle McCarthy Ring Sawtelle Long Hultman Silverman Zusman
 Hansen McKinley Kingsbury Loosemore Crew Bartlett Erion Oruch Dodds Tedrow
 Tretiak Hartman Krcal Wright Gantz Morton Barber McCarthy Leard Miss Rockfellow
 Goodbinder Waterman Hughes Thrush Eaton Smith Howley Thurtell Kohlberg Bowman*



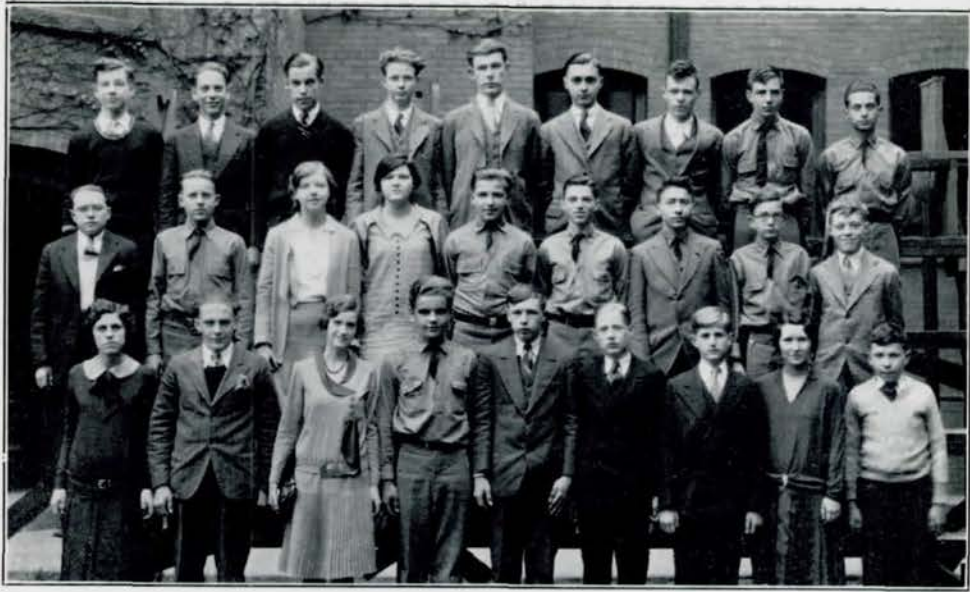
Lininger Travel Club

Porter Hayward McCaffrey Guion H. Niles Leard H. McCague L. Niles Kohlberg
 Myers Goldner White Pelter Higgins Cox Livermore Howley Frogger Steinway
 Waterman Towl Long Barber Stander I. Hansen Hindman Leppert Hartman McBride Drancy
 Muil Thurtell Shaw D. Hughes Smith Small Greer Tillotson Thomas M. Niles



Purple Legion

Wright Pilling Trout Gepson Lindquest Johnson McCreary
 Etchison Moriarty Kelley Dorsey Baird Bliss Davis Mansfield
 J. Levine Kerr Cunningham W. Ramsey D. Johnson Burkett Sandham
 Binkley R. Kent R. Levine Schwager W. Smith Randall Shoemaker Gordon



Stamp Club

*Guenther Goldstone Harmon Eilers Naughtin Moran Breitenkamp Williamson Doud
Kugler Moucha Henningson Morton M. Sommer Sandham Spechter Marshall Schneiderwind
Gearhart Laserowitz J. Milliken Greer Dalby C. Mossman F. Mossman Ashwood Semmers*



Dog Fanciers

*Walson F. Mossman C. Mossman Harlu Barry Grobec
Clafin Peterson S. Munkhof S. Munkhof H. Eggers Eggers Crow
Crawford Pounds Wielandt Cannon Doll Hawlu Axtell Miss Genevieve W. Clark*



Scene from Road Show — Victory Mass Meeting — Style Show

Young Men.....

STUDY LAW

THOUSANDS of young men have bettered their business positions by a thorough knowledge of the law.

*Instruction by practicing attorneys
—Specialists in their subjects*

UNIVERSITY OF OMAHA SCHOOL *of* LAW

For Further Information Write or Phone
HERBERT W. FISCHER, Secretary

1300 FIRST NATIONAL BANK BLDG.
JACKSON 1966

*Classes
held
evenings
at
1307
Farnam Street*

WHIPPET

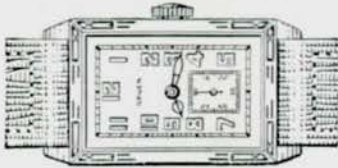
WILLYS

WILLYS KNIGHT

Brandes-Campbell Motor Co.

New Car Sales
2225 FARNAM

Used Car Sales
2584 HARNEY



*What
Graduates
Expect
of Parents*

*Wrist Watches
priced
\$20 and Up*

THE CB [The name on the box means something and doesn't add to the price]
Brown Co.
DIAMOND SPECIALISTS
220 South 16th Street



*When you buy John Deere
Implements you are as-
sured of repair service
during their entire life*



WE ARE able to interpret and execute your ideas with such good taste, that you will reflect through your advertising the high standards of your business.



109-11 NORTH 18TH ST.
OMAHA

TELEPHONE
JACKSON 0644



This issue of the O-Book is evidence

"Just around the corner from everywhere"

THE
Virginia
UP TO DATE
RESTAURANT

1413 Douglas Street

*50c. Blue Plate Lunch served
from 11 A.M. to 2 P.M.*

Theatrical and Masquerade Costumes

L THEODORE
IEBEN
& SON

*Costumes for
Amateur Theatricals
and
Fancy Dress Parties*

*Telephone
JA. 4115*

*Day and Evening Schools
Co-Educational*

*No Solicitors—No Contracts
No Pre-Payments*

VAN SANT
SCHOOL OF BUSINESS

CORNER 19TH AND DOUGLAS STREETS

*Graduates Placed Without Charge
Summer Session for Teachers and Students*

IONE C. DUFFY, OWNER
Ja. 5890 - Omaha

Haas Brothers Company

a shop of

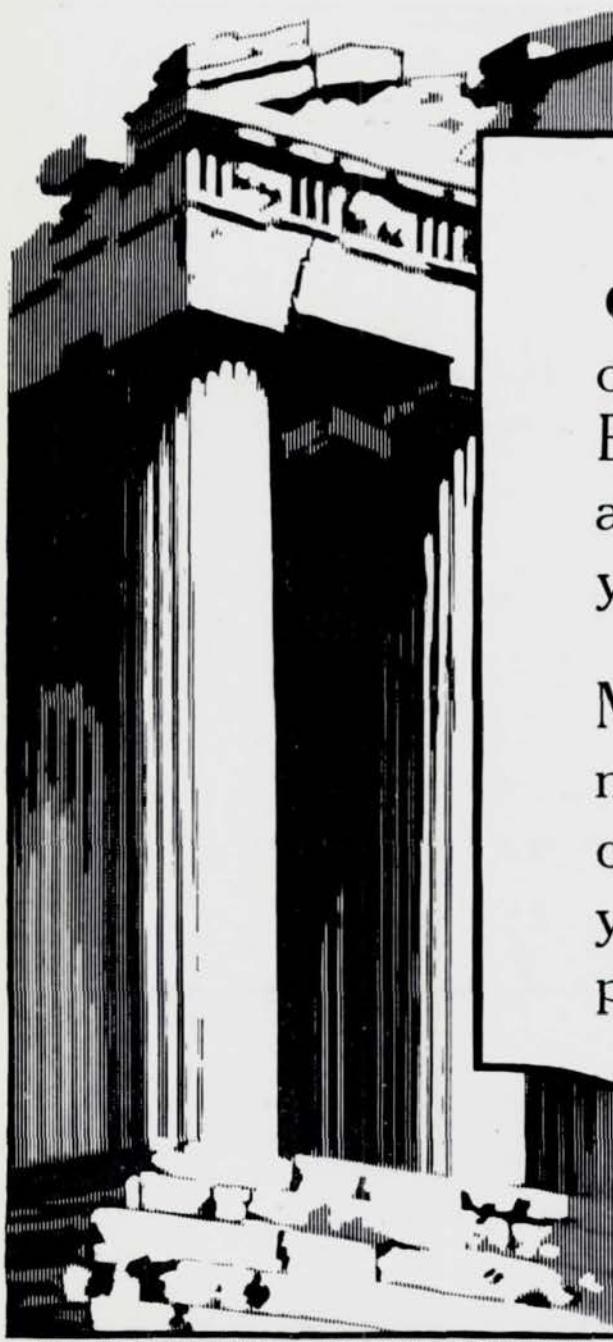
Clothes Personality

*where you will find clothes of quality and individual smartness
at most reasonable prices*

ONE OF AMERICA'S MOST BEAUTIFUL STORES

AQUILA COURT

OMAHA



IT HAS been our pleasure to Engrave the scenes and events for your Annual.

May they help to make your memories of the school year more complete.



BAKER BROS. ENGRAVING CO.
12 TH AND HARNEY STS. OMAHA, NEBR.





Markel Hudson Essex Co.



SALES — SERVICE

HARNEY AT 20TH
OMAHA, NEBR.

1732 O STREET
LINCOLN, NEBR.

All your life....

you will enjoy this jewelry store.

Everything in "Wares" and "Repairs" the best

T. L. Combs & Co.
SINCE 1886
JEWELERS AND GIFT COUNSELORS

1617 HARNEY ST. ELECTRIC BLDG.

HA. 0163

KOCHER
BROTHERS

Quality Foods

36TH AND FARNAM

Kilpatrick's

OMAHA

The Sixtieth Year

Shopping Place of Four Generations

An old institution, constantly young, expecting and wishing to be worthy of patronage by the character of our merchandise and an increasing ability to serve.

Wonderful Food - Light Lunches
Candies - - Ice Cream



*Quick
Service*

*Reasonable
Prices*

SUNSET TEA ROOM

FORTY-NINTH AND DODGE STREETS

CANDYLAND

SIXTEENTH AND FARNAM STREETS

Health

It is the most priceless possession we have. It inspires ambition, hard work and success.

Chiropractic

has restored health and happiness to millions, and so it has grown to the foremost drugless health science of all time.

Start Getting Well Today

DR. A. N. CARLSON

City Office
At. 9747
438 Securities Bldg.

Res. Office
Ke. 5582
7020 N. 30th

Cook **ELECTRICALLY**

*Then you cook
the modern way!*

**Cooler • cleaner
easier cooking
and QUICKER, too!**

RANGES
Sold on Easy Terms

NEBRASKA POWER CO.

*Congratulating
the fifty-fifth graduating
class of Central
High School*



PAUL A. WILLSIE

*Caps — Gowns — Hoods
Choir Robes*

205-7 SOUTH 10TH STREET
OMAHA, NEBR.

*Special Rates on
Cap and Gown
Photographs*

An Appreciation

*W*E wish to thank the students of Central High School for their very liberal patronage this past year, and may we merit a continuance of the same.

THE HEYN STUDIO

604 Paxton Block, 16th and Farnam

*If It's Worth
Anything*

“Have
It
Insured”

FOSTER-BARKER
COMPANY

209 SOUTH 19TH ST.

JA. 3511

*Compliments
of*

MORAN-
HIGGINS
PRINTING
COMPANY

*Printers
Publishers*

SMITH BLDG.
10TH AND DOUGLAS
JACKSON 1120

*Amateur Supplies and Finishing
Greeting Cards for all Occasions*

*Gifts and Novelties
Frames, Pictures and Mottos*

EASTMAN

KODAK STORES, Inc.

419 SOUTH 16TH STREET

*We Offer
Congratulations
to the
Class of '30*

GOULD
DRUG CO.

49TH AND DODGE STREETS

R

DAVID B. GROSS

CREDIT JEWELER

Ye Diamond Shoppe

1407 Farnam St. New Paxton Hotel.

*The American
Boy*



\$ **9⁷⁵**

Made by Westfield Watch Co., N. Y.

Ye Diamond Shoppe

CREDIT JEWELERS



Fine Pastries
Lunches
Salads
Picnic Lunches

Northrup-Jones
COMPANY

TWO STORES

1617 FARNAM

36TH AND FARNAM

*"Extravagance rots character. The habit
of saving money stiffens the will
and brightens the energies."*

—ROOSEVELT

OMAHA LOAN
& BUILDING
ASSOCIATION

*The Oldest
Savings
Institution
in the City*

FIFTEENTH AND DODGE STS.
OMAHA, NEBRASKA

1872

Doane College

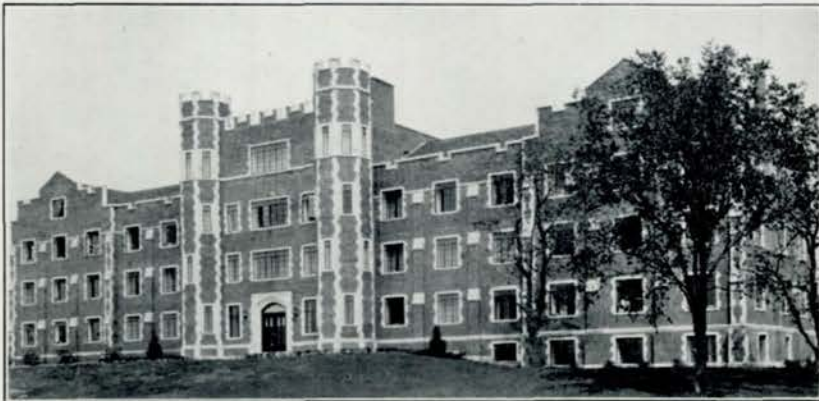
1930-31

CRÈTE,
NEBRASKA

*A First-Class
Well-Established*

LIBERAL
ARTS
COLLEGE

Accredited by the
ASSOCIATION OF
AMERICAN
UNIVERSITIES



Men's Hall, Doane College

TO THE SENIOR CLASS OF CENTRAL HIGH SCHOOL, GREETING:

Doane College congratulates you upon the near approach of your graduation from your high school course. Does college come next? Why not? Doane now offers not only a liberal arts diploma of the first rank, but provides dormitory life and beautiful surroundings for both young men and young women. The Omaha delegation at Doane is growing. Our catalog will be forwarded on request. Address:

PRESIDENT EDWIN B. DEAN, DOANE COLLEGE, CRÈTE, NEBRASKA

Autographs



Autographs

PRINTED BY THE DOUGLAS PRINTING CO., OMAHA, NEBRASKA

