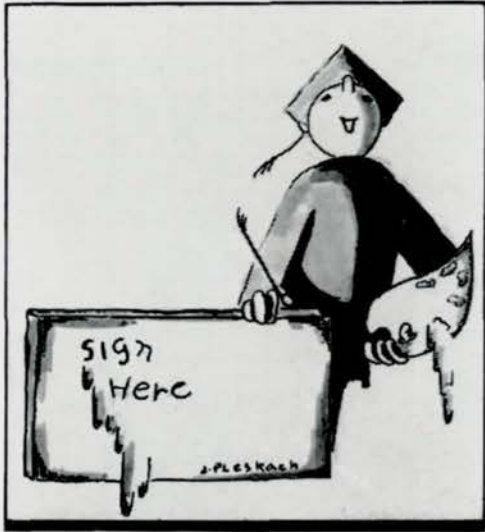


EOS

'46



O-BOOK



Central High School

OMAHA, NEBRASKA

VOLUME LX

1946



J. ARTHUR NELSON . . . Principal

STAFF

EDITOR-IN-CHIEF
MARSHA LONDON

SENIOR ALBUM EDITORS
ELAINE KOLAR
JOAN PLOTKIN

PICTURE EDITOR
GLORIA POLSKY

ACTIVITY EDITORS
ALICE SEIG
ELIZABETH TROUGHTON

CIRCULATION MANAGER
DONALD GREEN

PROMOTION MANAGERS
GORDON AUGUSTSON
ALBERT FELDMAN

BUSINESS MANAGER
ELEANORE BERNSTEIN

ART EDITORS
PATRICIA AHERN
BENNETT RADUZINER

MILITARY EDITOR
MARTIN HAYKIN

SPORTS EDITOR
JERRY MAGEE

LITERARY ADVISER
ANNE LANE SAVIDGE

ART ADVISER
MARY ANGOOD

FINANCIAL ADVISER
O. J. FRANKLIN

EXECUTIVE SENIOR SPONSOR
HELEN McCONNELL

SENIOR CLASS SPONSORS
BETTY JAYNE BACKLUND
JOSEPHINE FRISBIE
VIRGINIA LEE PRATT
ANGELINE TAUCHEN

CENTRAL HIGH SCHOOL FACULTY

ANDREW NELSEN
Assistant Principal

J. ARTHUR NELSON
Principal

FRANK Y. KNAPPLE
Dean of Boys

ENGLISH

Tillie C. Anderberry
Neill Bridenbaugh
Julia T. Carlson
Edward W. Clark
Josephine Frisbie
Virgene L. McBride
Bertha Neale
Ruth H. Pilling
Frank M. Rice
Amy Rohacek
C. J. Simpson
Helen L. Sommer
Martina Swenson
Augusta K. Turpin
Alice West

MATHEMATICS

G. E. Barnhill
R. B. Bedell
Maybel W. Burns
Grace E. Fawthrop
Clifford Ireland
Pearl Judkins
Andrew Nelsen
Duane M. Perry
Virginia Lee Pratt

HISTORY

Dorothy Cathers
Genevieve W. Clark
Irma Costello
Mary E. Elliott
Julietta Griffin
Elizabeth Kiewit
Margaret Leacy
Mary A. Parker
Gayle M. Phillips

MODERN LANGUAGES

Bess A. Bozell
Edward W. Clark
May L. Mahoney
Marguerite Rosemont

LATIN

Bernice Engle
Josephine Frisbie
Ruth H. Pilling
Bessie Rathbun

PHYSICAL SCIENCE

Roy C. Busch
F. H. Gulgard
J. G. Schmidt

NATURAL SCIENCE

Esmond N. Crown
Vernon H. Ekfelt
Helen Lane
Thomas W. Murphy

SOCIAL SCIENCE

Irma Costello
Irene Jensen
Frank Y. Knapple

MUSIC

Alice Ingraham
Irene Jensen
Mary Kern
Elsie H. Swanson
Merwin Tilton

HOUSEHOLD ARTS

Fern McCready
Florence Roush

STAGE MANAGER

Frank M. Rice

MECHANICAL ARTS

Mary Angood
O. J. Franklin

ART

Mary Angood

EXPRESSION DEBATE

Myrna V. Jones
Amy Rohacek

JOURNALISM

Anne Savidge

VISUAL EDUCATION

Roy C. Busch

PHYSICAL TRAINING

Betty Jayne Backlund
Janet Dorway
Thomas W. Murphy
Marian L. Treat
Fern McCready

CLASS COUNSELORS

Freshman

Irene H. Jensen
Frank Y. Knapple

Sophomore

Ruth H. Pilling
Duane M. Perry

Junior

Elizabeth Kiewit
Frank M. Rice

Senior

Josephine Frisbie
Andrew Nelsen

R. O. T. C.

F. H. Gulgard
Sgt. Joseph McGrath
Sgt. Palmer Peterson
Maj. Collins Spencer

SCHOOL TREASURER

O. J. Franklin

SCHOOL NURSE

Janet Dorway

LIBRARY

Catherine Blanchard
Hazel C. Stewart
Margaret Weymuller

OFFICE

Doris Biggs
Adrian Westberg

ATTENDANCE CLERK

Shirley Graser

BOOKROOM

R. B. Bedell
Sylvester P. Taylor

CAFETERIA

Minnie Nansel, Manager

MARSHA LONDON

National Honor Society

O-Book Staff, Editor-in-Chief. Register Staff (3,4), Makeup Editor, Editorial Writer (4), Reporter, Copyreader (3); Quill and Scroll National Current Events Contest, Fourth Place (4); Junior Honor Society (1,2,3); Mathematics Society (2,3,4), Sergeant-at-Arms (3); Discussion Club (3), Treasurer (3); Linger Travel Club (1,2,4); Central Colleens (2,4); International Relations Club (4); Roller Skating Club (4); Latin Club (3); Latin Award (3); All-Girls' Party (2,4); Girls' Bowling (4); Ushers (4); Teacher's Helper (4); Senior Play (4); Winner 1946 Pepsi-Cola Scholarship

GLORIA POLSKY

National Honor Society

O-Book Staff, Picture Editor. Register Staff (3,4), Reporter (3,4); Junior Honor Society (2,3); Central High Players (1,2,3,4); Central High Players' Plays, Publicity Committee (3); Linger Travel Club (1,2,3); Inter-American Club (1,2,3); Central Colleens (1,2); Discussion Club (3); French Club (3); Mathematics Society (3); Homeroom Representative (3); Stamp Salesman (2,3); Teacher's Helper (1,2,3,4); Student Control (3)

DONALD ERWIN GREEN

National Honor Society

O-Book Staff, Circulation Manager. Register Staff (3,4), Circulation Manager (4); ROTC (1,2,3,4), Technical Sergeant (4); NCOC (3,4); Military Police (3); Ushers (3,4); Inter-American Club (2,3); Chess Club (2,3); Mathematics Society (4); Boys' Bowling (4); Stamp Salesman (3); Teacher's Helper (2,4); Student Control (2,3); Senior Committee (4); Senior Play (4)

ELEANORE BERNSTEIN

O-Book Staff, Business Manager. Register Staff (4), Business Manager (4), A Cappella Choir (3,4); Girls' Advanced Senior Glee (2); Girls' Senior Glee (1); Girls' Junior Glee (1); Opera (3); Music Festival (1,2,3,4); Road Show (4); Junior Honor Society (3); Central Colleens (2,3); Inter-American Club (1,2,3); Linger Travel Club (1,2,3,4); Homeroom Representative (4); Teacher's Helper (3); Student Control (2); Senior Play (4)

ELAINE ADELE KOLAR

National Honor Society

O-Book Staff, Senior Album Co-Editor. Register Staff (4), Reporter, Librarian (4); Junior Honor Society (1,3); Homeroom Representative, Alternate (3); Girl Reserves (1); Volley Ball (1); Teacher's Helper (1,2,3,4); All-Girls' Party (4)

JOAN MARIE PLOTKIN

National Honor Society

O-Book Staff, Senior Album Co-Editor. Register Staff (4), Copyreader (4); Junior Honor Society (1,2,3); Girls' Choir (3); Girls' Senior Glee (2); Girls' Junior Glee (1); Music Festival (1,2,3); Central Colleens (2,3,4); Linger Travel Club (2,3,4); Mathematics Society (3,4); Inter-American Club (2); GAA (1,2); Teacher's Helper (1,2,3,4); Library Assistant (1,2); Ushers (4); All-Girls' Party (2); Senior Committee (4)

PATRICIA ANN AHERN

National Honor Society

O-Book Staff, Art Editor. Art Contest (3,4); Senior Art (3,4); Greenwich Villagers (3,4), President (4), Secretary (3); Central High Players (3,4), Vice President (4); Central High Players' Plays (3,4), Lead (4); National Thespians (4); Junior Honor Society (3); National Forensic League (2,3,4); Debate Squad (3,4); Debate Team (3,4); Teacher's Helper (3,4); Senior Committee (4)

BENNETT L. RADUZINER

O-Book Staff, Art Editor. Art Contest (1,2,3,4); Senior Art (2,3,4); Road Show Cover (4); Register Staff (4), Assistant Sports Editor (4); ROTC (1,2,3,4), Technical Sergeant (4); NCOC (3); Military Police (4); Homeroom Representative (3), Alternate (4); Boys' Bowling (4); Intramural Sports (4); Football (1); Inter-American Club (1,2); Greenwich Villagers (2); Student Control (1,2,4); Teacher's Helper (3)

CARYL RUTH BERCOVICI

National Honor Society

Register Staff, News Editor. O-Book Staff (4); Junior Honor Society (1,2,3); Central Colleens (2,3,4); Central High Players (3,4); Linger Travel Club (1,2,3); Inter-American Club (2,3,4); Mathematics Society (3,4); Girls' Junior Glee (1); Music Festival (1); Stamp Solesman (3); Teacher's Helper (3); Senior Committee (4)

JONATHAN AMOS GOLDSTEIN

National Honor Society

Register Staff, Literary Editor. National High School Journalism Institute (3); Junior Honor Society (1,2,3); Chess Club (3,4), Treasurer (4); International Relations Club (4); Latin Club (2,3); Latin Award (2,3); Mathematics Society (4); French Award (3); Track (2,3,4); Debate Squad (2); ROTC (1,2); Homeroom Representative (2); Senior Play (4); Senior Committee (4)

ARISTIDES ABARIOTES

ROTC (1, 2, 3, 4), Second Lieutenant (4); COC (4); NCOC (3); Boys' Rifle Team (2,3,4), Manager (4); Military Police (4); Ushers (3); Junior Honor Society (1,2); Inter-American Club (1,2,3); Chess Club (2); Mathematics Society (4); Wrestling (2,3); Football (4); Homeroom Representative (4); Stamp Salesman (3); Teacher's Helper (4); Student Control (2); Senior Play (4)

ALVIN ABRAMSON

A Cappella Choir (3, 4); Boys' Senior Glee (2); Boys' Junior Glee (2); Music Festival (2,3,4); Opera (3,4); Road Show (4); Junior Honor Society (1); ROTC (1,2); Homeroom Representative (4); Stamp Salesman (4); Discussion Club (3); Inter-American Club (2,3); Mathematics Society (2); Basketball (2); Boys' Bowling (2)

MORRIS ABRAMSON

Debate Squad (3); National Forensic League (3); ROTC (2,3); Military Police (3); Chess Club (1,2,3); Latin Club (2,3); Mathematics Society (4); Boys' Junior Glee (4)

ANDRIANA N. ADAMS

National Honor Society

Register Staff (4), Proofreader, Reporter (4); O-Book Staff (4); Junior Red Cross Council (3,4); Junior Honor Society (1); French Club (3,4); Teacher's Helper (3, 4); Basketball (1); Volley Ball (1)

JOHN WILLIAM ANDERSON

National Honor Society

Homeroom Representative (2,3,4); Junior Honor Society (2); Boys' Bowling (4); Inter-American Club (2); Stamp Salesman (3); Student Control (4); Teacher's Helper (2); Concert Band (1)

LINAE R. ANDERSON

ROTC (1,2,3,4), Captain, Battalion Adjutant (4); COC (4); NCOC (3), President (3); Crack Squad (3,4); Co-Commander (4); Military Police (2); Supply Department (2); Road Show (3,4); Ushers (3); Inter-American Club (2,3,4); Central High Players (4); Chess Club (3); Latin Club (1); Boys' Bowling (3)

JAMES H. ANDRE

ROTC (1,2,3,4), Second Lieutenant (4); COC (4); NCOC (3); Ushers (4); Junior Honor Society (1); Chess Club (1,2,3,4), President (4); Inter-American Club (2, 3), Treasurer (3); Mathematics Society (2, 3, 4); Roller Skating Club (2,3); Stamp Club (2,3); Homeroom Representative (2,3); Stamp Salesman (3); Hi-Y (3); Teacher's Helper (2,4); Senior Play (4)

ROY L. ANSEL

Baseball (4); Boys' Bowling (4); Boys' Senior Glee (4); ROTC (4); Inter American Club (2); Student Control (3)

HERBERT J. ARMBRUST

Central High Players (4); Inter-American Club (4); Student Control (3); Senior Play (4)

MARY MARGARET BADGER

Art Contest (4); Senior Art (4); Greenwich Villagers (4); Central High Players' Plays (4); Central High Players (4); French Club (4); Senior Committee (4); Senior Play (4)

ANGELO A. BATTAGLIA

CHARLES ROBERT BEBER

National Honor Society

Junior Honor Society (1,2,3); Student Council (4); Opera, Ticket Manager (4); Road Show, Ticket Manager (4); O-Club (2,3,4); Football (1,2,3,4); Track (1,2,3,4); Wrestling (1,2,3,4); Mathematics Society (2,3,4); Vice President (4); Latin Club (2,3); Latin Award (2); French Club (3,4); Homeroom Representative (1,2); Ushers (4); Student Control (3); Senior Committee (4); Senior Play (4)

SHIRLEY BEEBE

Library Assistant (4); Makeup (4); Ushers (4)

BEVERLY ANN BENSON

National Thespians (3,4); Central High Players' Plays, Costume Committee (3); Central High Players (2,3,4); GAA (1,2,3); Sergeant-at-Arms (1); Girl Reserves (1); Central Colleens (2,3,4); Girls' Choir (3); Girls' Senior Glee (2); Girls' Junior Glee (1); Music Festival (1,2,3); All-Girls' Party (2,4); Teacher's Helper (2,3,4); Student Control (2); Senior Committee (4)

RICHARD BLAKE BERGERS

Track (1,2,3,4); Boys' Bowling (1,2,4); Football (1); Homeroom Representative, Alternate (4); ROTC (1,2); Student Control (2,3)

DONNA MAXINE BERNSTIEN

Central Colleens (3,4); Inter-American Club (3); Linger Travel Club (3,4); Senior Committee (4)

EDWARD ROLLIN BERRY

ROTC (1,2,3,4), First Lieutenant (4); COC (4); NCOC (3); ROTC Band (3,4); Junior Band (4); Commander (4); Road Show (3,4); Orchestra (3,4); Opera (3,4); Music Festival (3); Ushers (2,3); Boys' Bowling (4); Inter-American Club (2); Teacher's Helper (4)

MADLINE BERTINO

Greenwich Villagers (3); Student Control (3,4)

THOMAS RUSSELL BEST

ROTC (1,2); French Club (3); Student Control (1,2,3); Teacher's Helper (3,4)

MARY LOUISE BLACK

A Cappella Choir (4); Central Colleens (4); Girl Reserves (4)

DONNA LEE BLAU

NORMAN BLOCH

A Cappella Choir (4); Boys' Senior Glee (1,3,4); Boys' Junior Glee (1); Music Festival (1,4); Music Contest (4); Opera (3); Road Show (4); ROTC (1,2); Military Police (2); Ushers (2); Boys' Bowling (1,2,3); Secretary (3); Homeroom Representative (2); Stamp Salesman (4); Latin Club (4); Stamp Club (1); Student Control (2,3); Teacher's Helper (3)

SANFORD BLOOM

ROTC (1,2,3); First Sergeant (3); NCOC (2,3); Crack Squad (3); Silent Platoon (2); Ushers (2,3); Military Police (2); Road Show (2,3,4); Stamp Club (1,2); Sergeant-at-Arms (2); French Club (2); Inter-American Club (2); Latin Club (2); Roller Skating Club (2); National Thespians (4); Hi-Y (2); Boys' Bowling (3); Homeroom Representative (2); Student Control (1,2)

RUSS BLOOMQUIST

ROTC (1,2,3,4); Captain (4); COC (4); NCOC (3); Military Police (2); Ushers (2); French Club (2,3,4); Senior Play (4)

BONNIE BLUTO

Girls' Senior Glee (4); Girls' Junior Glee (3); Teacher's Helper (3)

SUZANNE BOCKES

Register Staff (4); Feature Writer (4); Student Council (1,2); All-Girls' Party (1,2); Junior Honor Society (1); Homeroom Representative (1,2); Latin Club (2,3); Secretary (3); French Club (3,4); Secretary (4); Lininger Travel Club (1,2,3,4); Central High Players (2); Student Control (2,3); Teacher's Helper (3); Road Show (4); Senior Committee (4)

ARNETT JACKSON BONNER

Register Staff (4); Assistant Circulation Manager (4); Debate Team (3,4); Debate Squad (3,4); National Forensic League (4); Mathematics Society (4); Latin Club (1,2); Basketball (2)

FRANCES AMELIA BOWIE

Girls' Senior Glee (3); Girls' Junior Glee (2); Music Festival (2); French Club (3)

HARRIET I. BRADENKAMP

FLORYNE BROOKSTEIN

Library Assistant (1,2); Central Colleens (4); Girl Reserves (1); Teacher's Helper (4); Student Control (2); Senior Committee (4)

6

JOHN ROBERT BROWNING

ROTC (1,2,3,4), First Lieutenant (4); COC (4); NCOC (3); ROTC Senior Band (1,2,3,4), Commander (4); ROTC Junior Band (4); Road Show (1,2,3,4); Boys' Bowling (3,4), President (4); Hi-Y (3); Roller Skating Club (2,3), Vice President (2); French Club (2,3); Teacher's Helper (4); Senior Play (4)

BEVERLY JANE BURG

Girl Reserves (2,4); GAA (2,3); Pep Squad (3); Volley Ball (2,3); Basketball (3); Girls' Junior Glee (2); Student Control (4)

ROBERT H. BUSH

ROTC (1,2); Track (3,4); Mathematics Society (4); Inter-American Club (2); Senior Committee (4)

WILBUR G. CAHOON

ROTC (1,2,3,4), Major (4); COC (4); NCOC (2,3); Crack Squad (3,4), Co-Commander (4); Silent Platoon (2); Military Police (2); Ushers (2,3,4); Road Show (2,3,4); Inter-American Club (2,3); Homeroom Representative (2)

ELIZABETH BUSH CALDWELL

National Honor Society

A Cappella Choir (3,4); Music Festival (1,2,3,4); Opera (3,4); Road Show (4); Class Officer (1,2), President (2), Vice President (1); Junior Honor Society (1,2,3); French Club (2,3,4), President (4), Secretary (3); Lininger Travel Club (1,2,3,4), Vice President (4), Treasurer (3); Latin Club (2,3), Vice President (3); Latin Award (3); Junior Red Cross Council (1,2,3,4), Secretary (2), Treasurer (4); Student Council (2,3), Sergeant-at-Arms (2); Homeroom Representative (1,2,3); All-Girls' Party (1,2,4); Stamp Salesman (3); Senior Committee (4)

JENNIE ROSE CALIENDO

Junior Honor Society (1); Makeup (3,4); Lininger Travel Club (4); Central Colleens (3,4); Roller Skating Club (3,4); Girl Reserves (4); GAA (1); Library Assistant (2)

ROSE MARIE CANIGLIA

Makeup (4); Teacher's Helper (2,4); Central Colleens (3)

ELIZABETH ANN CARIGNAN

Register Staff (4), Reporter (4); Quill and Scroll (3,4); Mathematics Society (4); Central Colleens (4); Latin Club (4); Debate Squad (4)

Unable

BARBARA RENEE CARLEMAN

National Thespians (4); Central High Players (2,3,4), Treasurer (4), Corresponding Secretary (3); Central High Players' Plays (2,3,4), Ticket Manager (4); Property Committee (2,3); Register Staff (4), Reporter (4), Advertising (4); Road Show (4); Lininger Travel Club (1,2,3,4); Inter-American Club (3,4); Central Colleens (2,3); GAA (1); Homeroom Representative (4); Student Control (2,3,4); Senior Committee (4); Senior Play (4)

MARY P. CASTRO

Register Staff (4), Reporter, Proofreader (4); O-Book Staff (4); Commercial Award (3,4); Central Colleens (3); Central High Players (3); Lininger Travel Club (3); Makeup (3); Teacher's Helper (2,4); Student Control (3); Senior Committee (4)

Unable

LUCILLE ELIZABETH CATALANO

Road Show {1,4}; Central Colleens {3,4}; Central High Players {2}; GAA {1}; Girl Reserves {1}; Inter-American Club {3}; Pep Squad {2}; Homeroom Representative {3}; Stamp Salesman {3}; Student Control {3,4}; Teacher's Helper {3,4}; Senior Play {4}; All-Girls' Party {4}; Senior Committee {4}

MARY MARGARET CATRON

A Cappella Choir {4}; Girls' Choir {3}; Girls' Senior Glee {2}; Girls' Junior Glee {1}; Music Festival {1,2,3,4}; Central Colleens {1,2,3,4}; Girl Reserves {3,4}; Latin Club {2}; Teacher's Helper {4}

JAY JOSEPH CHASEN

ROTC {3,4}; Second Lieutenant {4}; COC {4}; NCOC {3}; ROTC Senior Band {3,4}; ROTC Junior Band {4}; Commander {4}; Road Show {3,4}; Ushers {3}; Ice Skating Club {4}

SHIRLEY CHORNEY

Liner Travel Club {2}; Inter-American Club {2,3}; Central Colleens {1}; Girls' Senior Glee {2,3}; Girls' Junior Glee {1}; Music Festival {2,3}; Student Control {3}

WILLIAM EDWARD CHRISTENSEN

ROTC {1,2,3,4}; First Lieutenant {4}; COC {4}; NCOC {3}; Ushers {3,4}; Road Show {3,4}; Homeroom Representative {3}; Stage Crew {3,4}; Boys' Bowling {4}; Student Control {2,4}; Teacher's Helper {4}

WENDELL CLARK

A Cappella Choir {4}; Boys' Senior Glee {4}; Stage Crew {1,2,3}; Ice Skating Club {4}; Student Control {2,3}

MARY VIRGINIA COBURN

Central High Players {3,4}; Art Contest {4}; Senior Play {4}

JEROME EDWIN COHEN

ROTC {1,2}; Mathematics Society {3,4}; Discussion Club {3}; Inter-American Club {2}; Boys' Bowling {4}; Student Control {1}

DELORES JEAN COHN

Register Staff {4}; Exchange Editor {4}; A Cappella Choir {4}; Girls' Senior Glee {3}; Music Festival {3,4}; Junior Honor Society {3}; Central Colleens {1,2,3}; Central High Players {3,4}; Inter-American Club {3,4}; Latin Club {2}; Lininger Travel Club {2,3,4}; Stamp Salesman {3}; Student Control {1,2,3}; Teacher's Helper {2,4}; Senior Committee {4}

JOSEPHINE COLOMBA

Art Contest {1,2}; Senior Art {4}; Greenwich Villagers {4}; Central Colleens {3,4}; Central High Players {3,4}; Roller Skating Club {3,4}; Girl Reserves {4}; Lininger Travel Club {4}; French Club {3}; GAA {1}; Pep Squad {2,3}; Baseball {1}; Basketball {1}; Volley Ball {1}; Makeup {3,4}; Ushers {3,4}; Teacher's Helper {1,2}

CAROL JUNE COOPER

Girls' Senior Glee (2,3); Girls' Junior Glee (1); Music Festival (1,2); Central Colleens (2,3,4); Lininger Travel Club (2,3,4); Inter-American Club (1,2,3); Central High Players (4); Girl Reserves (4); Homeroom Representative (4)

SHELDON LEON COREN

Track (2); Wrestling (2); Chess Club (4); Stamp Club (4); Inter-American Club (1)

JOYCE ELAINE CORENMAN

A Cappella Choir (4); Girls' Senior Glee (2,3); Girls' Junior Glee (1); Music Festival (2,3,4); Lininger Travel Club (2,3,4); Central Colleens (3,4); French Club (3,4); Latin Club (2); Stamp Salesman (3); Teacher's Helper (3)

WENDIE LOU CORKIN

A Cappella Choir (3,4); Girls' Senior Glee (2); Girls' Junior Glee (1); Music Festival (1,2,3,4); Opera (3,4); Central High Players (1,2,3,4); Lininger Travel Club (1,2,3,4); Central Colleens (2,3,4); Homeroom Representative (3); Alternate (2); Student Control (1,2,3); Teacher's Helper (1); Ushers (4); Road Show (4)

SEBASTIAN CORTESE

A Cappella Choir (4); Road Show (3); Junior Honor Society (1,2); Latin Club (2,3,4); Latin Award (3); Football (3); Wrestling (3); Student Control (3)

LUCY R. COSTANZO

Homeroom Representative (1,2); Roller Skating Club (1); Student Control (4)

JAMES ROBERT COUFAL

ROTC (1,2,3); Road Show (4); Wrestling (1,4); French Club (3,4); Inter-American Club (2); Homeroom Representative (1); Stamp Salesman (1); Senior Play (4)

DONALD A. CRANE

Wrestling (1,2,3,4); Football (3); O-Club (4); Stage Crew (3,4); Student Control (3)

CAROL CROWLEY

A Cappella Choir (4); Girls' Senior Glee (2,3); Girls' Junior Glee (1); Music Festival (1,2,3,4); Opera (4); Road Show (4); Central Colleens (2,3,4); Lininger Travel Club (2,3,4); Central High Players (3,4); Inter-American Club (2,3); Homeroom Representative, Alternate (3); Student Control (2,3,4); Teacher's Helper (3); Ushers (4); All-Girls' Party (4); Senior Committee (4)

GLORIA JEAN CUNNINGHAM

Girls' Senior Glee (3); Girls' Junior Glee (2); Music Festival (2,3); Inter-American Club (2,3); Stamp Club (2,3); Central Colleens (4); Lininger Travel Club (4); Latin Club (1); Student Control (3); Senior Committee (4)

THEODORE CUNNINGHAM

ROTC (1,2,3,4), Technical Sergeant (4); NCOC (3,4); Silent Platoon (3); Road Show (3)

LOUISE N. D'AGOSTA

Central Colleens (3,4); Girl Reserves (4); Lininger Travel Club (4); Roller Skating Club (3,4); Library Assistant (1,2); Student Control (1,2); Teacher's Helper (3); Ushers (3,4); Senior Committee (4)

ANGELINA A. DAPRIZIO

Commercial Award (4); Central Colleens (3,4); Girl Reserves (2); Girls' Bowling (4)

SORALEE DAVIS

Register Staff (3), Reporter (3); Junior Honor Society (2,3); French Club (1,2,3,4), Treasurer (4); Central Colleens (2,3); Lininger Travel Club (1,2,3)

DOROTHY DEFFENBAUGH

National Honor Society

Central High Players (2,3,4); President (4); Vice President (3); Central High Players' Plays, Business Manager (4); National Thespians (4); Junior Honor Society (1,2,3); A Cappella Choir (3,4); Road Show (1,2,3,4); Opera (3,4); Music Festival (1,2,3,4); Student Council (2,3); All-Girls' Party (2,3,4); Class Officer (2), Secretary (2); Lininger Travel Club (1,2,3,4), Sergeant-at-Arms (2); French Club (3,4); Latin Club (1,2); Teacher's Helper (3,4); Ushers (3,4); Senior Play (4)

JOSEPH N. DEWELL

A Cappella Choir (1,2,3,4); Boys' Senior Glee (1); Music Festival (1,2,3,4); Opera (2,3,4); Road Show (3,4); ROTC (2,3,4), Technical Sergeant (4); NCOC (3,4); Military Police (2); Silent Platoon (3); Ushers (1,2,3); Boys' Bowling (2,3,4); Hi-Y (1); Central High Players (2); Student Control (2)

ISADORE DIAMOND

ROTC (1,2,3,4), Sergeant (4); NCOC (3,4); Silent Platoon (3); Road Show (3); Ushers (3,4); Ice Skating Club (4); Wrestling (1)

SARA E. DIAMOND

Central Colleens (3,4); Central High Players (3); Lininger Travel Club (3,4); Makeup (3); Pep Squad (3); Senior Committee (4)

GEORGE P. DREIER

ROTC (1,2,3,4), Corporal (4); NCOC (4); Roller Skating Club (1,2); Student Control (1); Senior Play (4)

DICK DUDA

ROTC (1,2,3); Silent Platoon (2); Road Show (2,4); Intramural Sports (2,3,4); Baseball (1,2,3,4); Football (3); O-Club (3,4); Homeroom Representative (1,2); Junior Band (4); Teacher's Helper (4); Student Control (3)

13

NAOMI FRANCES DUHART

Central Colleens (2,3,4); Inter-American Club (4); GAA (1); Girls' Junior Glee (1)

SHIRLEY LEE DYAS

A Cappella Choir (3,4); Girls' Senior Glee (2); Girls' Junior Glee (1); Music Festival (1,2,3,4); Opera (3); French Club (3,4); Central Colleens (3,4); Inter-American Club (1,2); Homeroom Representative (4); Teacher's Helper (4); Student Control (4); Ushers (4)

ELINOR ELIZABETH EMLEY

Latin Club (2); Girl Reserves (4); Teacher's Helper (4)

WILLIAM STANLEY ERICKSON

A Cappella Choir (4); Music Festival (4); Road Show (4)

BERNARD FALK

ROTC (1,2); Teacher's Helper (4); Student Control (3)

ALBERT L. FELDMAN

National Honor Society

O-Book Staff (3,4), Circulation (3,4), Promotion Manager (4); Register Staff (3,4), Proofreader (3), Makeup Editor (4); National High School Journalism Institute, Honor Student (3); ROTC (1,2,3,4), First Lieutenant (4); COC (4); NCOC (3); Silent Platoon (3); Ushers (3); Road Show (3); Junior Honor Society (1,2,3); National Forensic League (2,3,4), President (4); Debate Squad (2,3,4); Debate Team (3,4); Discussion Club (1,2,3), Vice President (3); Mathematics Society (2,3,4), President (4); Inter-American Club (1,2,3,4); Central High Players (1,2,3,4); Central High Players' Plays, Publicity Committee (3); Senior Committee (4)

EUNICE FELDMAN

National Honor Society

A Cappella Choir (3,4); Music Festival (1,2,3,4); Opera (3,4); Road Show (4); Register Staff (4), Reporter (4); Junior Honor Society (1,2,3); National Thespians (4); Central High Players (3,4), Secretary (4); Central Colleens (2,3,4), Treasurer (4); Mathematics Society (3), Secretary (3); Lininger Travel Club (1,2,3,4); Latin Club (1,2); Latin Award (2); Homeroom Representative (3,4); Stamp Salesman (1,2); Ushers (3); All-Girls' Party (4); Senior Play (4); Senior Committee (4)

BETTY LOU FESLER

National Honor Society

Honorary Lieutenant Colonel (4); A Cappella Choir (3,4); Music Festival (2,3); Opera (3,4); Road Show (3,4); National Thespians (3,4); Central High Players (4); Titiens (1,2,3,4), Vice President (4); Sergeant-at-Arms (3); Library Assistant (1,2,3,4); Ushers (1,2,3); Class Officer (2,3); Vice President (3); Sergeant-at-Arms (2); Inter-American Club (2,3,4); Lininger Travel Club (3,4); French Club (3); Junior Honor Society (1,3); Homeroom Representative (2,3); Teacher's Helper (2,3); All-Girls' Party (3,4)

PATRICIA HARRIET FILLEY

Girl Reserves (2,3,4); Inter-American Club (3,4); Central Colleens (3); Lininger Travel Club (3); Roller Skating Club (3); GAA (1,2,3,4); Pep Squad (2,3); Volley Ball (4); Library Assistant (3); Teacher's Helper (3)

MARCELLINE FLOYD

Girls' Senior Glee (2); Girls' Junior Glee (1)

DALLAS JORDAN FOCHT

National Honor Society

ROTC (1,2,3,4), Second Lieutenant (4); COC (4); NCOC (2,3); Ushers (2,3); A Cappella Choir (4); Opera (4); Music Festival (4); Junior Honor Society (1,2); Central High Players' Plays (4), Lead (4); Central High Players (4); Chess Club (2,3); Inter-American Club (2,3); Homeroom Representative (1,2); Boys' Bowling (2,3); Track (3); Senior Committee (4); Road Show (4); Senior Play (4)

MARGARET ALICE FOWLER

Baseball (3,4); Basketball (3,4); Volley Ball (3); GAA (3); Senior Committee (4)

VELMA LEE FRAZIER

Road Show (4)

ELIZABETH M. FULLAWAY

National Honor Society

Register Staff (4), Associate Editor (4); National High School Journalism Institute (3); Linger Travel Club (1,2,3,4), President (4), Secretary (3), Sergeant-at-Arms (2); French Club (2,3,4); Latin Club (3); Junior Honor Society (1,2); Homeroom Representative (2,3); Teacher's Helper (2,3,4); All-Girls' Party (4); Road Show (4); Senior Play (4)

BETTY BELLE FULMER

A Cappella Choir (3,4); Music Festival (1,2,3,4); District Music Contest (4); Opera (3,4); Register Staff (4), Exchange Co-Editor (4); O-Book Staff (2,4); National Thespians (4); Central High Players (3,4); Senior Art (2,4); Art Contest (2,3,4); Greenwich Villagers (3,4); Road Show (2,4); Central Colleens (2,3,4); Linger Travel Club (3,4); Girl Reserves (3); Homeroom Representative (3); Student Control (2,3,4); Teacher's Helper (4); Ushers (3); Senior Committee (4); Senior Play (4)

BETTY JEANNE FUNK

Girls' Senior Glee (2,3); Girls' Junior Glee (1); Music Festival (1,2); Student Control (3,4); Baseball (2)

ELLENE MAE GANS

Girl Reserves (2,3,4), Vice President (4); Central Colleens (3,4); Junior Honor Society (3); Girls' Choir (3); Girls' Senior Glee (2); Girls' Junior Glee (1); Music Festival (1,2); Library Assistant (4); Senior Committee (4)

SALLY RUTH GENDLER

Central Colleens (2,4); Linger Travel Club (2,4); Inter-American Club (2); Senior Committee (4)

MARILYN T. GERBER

Titians (1,2,3,4), Secretary (4); Ushers (1,2,3,4); Library Assistant (1,2,3,4); Linger Travel Club (1,2,3,4); Central Colleens (4); Inter-American Club (4); Junior Honor Society (1); Homeroom Representative, Alternate (2); Senior Committee (4)

BARBARA LEE GILINSKY

A Cappella Choir (4); Girls' Senior Glee (2,3); Girls' Junior Glee (1); Music Festival (1,2,3,4); Opera (4); Linger Travel Club (1,2,3,4); Central Colleens (2,3,4); Inter-American Club (3,4); Ushers (4); Homeroom Representative (2); Senior Committee (4)

12

BETTY E. GILMAN

Register Staff (4); Exchange Editor (4); O-Book Staff (4); Junior Honor Society (1); Central Colleens (2,3,4); Linger Travel Club (2,3); Roller Skating Club (1,2); GAA (1,2); Inter-American Club (3); Girl Reserves (1); Homeroom Representative (3); Teacher's Helper (2,3,4); Ushers (4); Volley Ball (1); Senior Committee (4)

PHILIP LAWRENCE GILMORE

ROTC (2,3,4); First Lieutenant (4); COC (4); NCOC (3); Crack Squad (3); Silent Platoon (2); A Cappella Choir (4); Road Show (2,3,4); Homeroom Representative (2,4); Senior Committee (4); Senior Play (4)

DOLORES JEANETTE GORDON

Linger Travel Club (4); Girls' Junior Glee (1); Music Festival (1)

LORRAINE RAE GORELICK

A Cappella Choir (2,3,4); Music Festival (2,3,4); Opera (3,4); Senior Art (4); Art Contest (3,4); Art Award (4); Greenwich Villagers (3,4); Linger Travel Club (2,3,4); Central Colleens (2,3,4); Central High Players (4); GAA (1,2); Girl Reserves (1); Ushers (3,4); Homeroom Representative (1); Commercial Award (4); Senior Committee (4)

JOAN GORMAN

Baseball (1,2,3,4); Volley Ball (1,2,3,4); Basketball (1,2,3); Ping Pong (1,2); Girls' Junior Glee (1); Music Festival (1); Inter-American Club (4); Teacher's Helper (2,3,4)

BEVERLY J. GRAY

Register Staff (4); Advertising (4); Junior Honor Society (1); Central Colleens (3); French Club (3); Linger Travel Club (1); GAA (1); Student Control (2,3,4); Teacher's Helper (2,3)

DOLORES MARIE GREEN

Homeroom Representative (4); Girl Reserves (2,3,4); Roller Skating Club (2,3,4); Ice Skating Club (4); Inter-American Club (2); GAA (1); Pep Squad (2); Makeup (2); All-Girls' Party (4)

SAUL GREENBERG

ROTC (1,2,3,4); Technical Sergeant (4); NCOC (2,3,4); Ushers (3,4); Road Show (2); Homeroom Representative (3); Stamp Salesman (3); Student Control (4); Teacher's Helper (3); Boys' Bowling (4); Stage Crew (1,2); Inter-American Club (2)

BEVERLY JANE HAARMANN

Stamp Salesman (3,4); Central Colleens (3,4); French Club (3,4); Latin Club (2); Linger Travel Club (4); GAA (1); All-Girls' Party (4); Senior Committee (4)

MARIAN JOYCE HAMILTON

A Cappella Choir (4); Girls' Choir (3); Girls' Senior Glee (2); Girls' Junior Glee (1); Music Festival (1,2,3,4); Opera (1); Road Show (1); Central Colleens (1,2); Central High Players (1,2,3); Linger Travel Club (1,2,3); Inter-American Club (1,2); Homeroom Representative (4); Stamp Salesman (2); Student Control (2,3); Library Assistant (3); Ushers (1); All-Girls' Party (4); Senior Committee (4)

MORRIS HANDLEMAN

Baseball {1,3,4}; Basketball {1,4}; O-Club {4}

HELEN S. HANDLER

Girls' Senior Glee {2}; Girls' Junior Glee {1}; Music Festival {1,2}; Road Show {4}; Senior Art {4}; Art Contest {2,3,4}; Titians {1,3,4}; Sergeant-at-Arms {4}; Ushers {1,3,4}; Central Colleens {4}; Greenwich Villagers {3,4}; Lininger Travel Club {4}; GAA {1}; Teacher's Helper {3}; Library Assistant {1}; All-Girls' Party {1}; Senior Committee {4}

JUANITA ANN HANGER

Register Staff {4}; Reporter {4}; National Thespians {3,4}; Central High Players {1,2,3,4}; Latin Club {2,3,4}; Lininger Travel Club {1,2,4}; International Relations Club {4}; GAA {1,2,3,4}; Baseball {1,2,3,4}; Basketball {1,2,3,4}; Volley Ball {1,2,3}; Junior Band {1}; Teacher's Helper {2,3,4}; Student Control {2}; Stamp Salesman {1}; Senior Committee {4}; Senior Play {4}

JACQUELINE M. HANS

Girls' Junior Glee {2}; Music Festival {2}; Stamp Salesman {3}; Student Control {4}

DALE DARREL HARRINGTON

Football {3,4}; Senior Art {3}; Art Contest {2}; Stage Crew {3,4}; Boys' Junior Glee {3}; Homeroom Representative {1}

MARTIN D. HAYKIN

ROTC {1,2,3,4}; Second Lieutenant {4}; COC {4}; NCOC {3}; Military Police {2}; Register Staff {4}; Reporter {4}; O-Book Staff {4}; Military Editor {4}; Inter-American Club {2}; Student Control {1,2}

ELIZABETH ANN HESLER

A Cappella Choir {3,4}; Opera {3,4}; Lead {4}; Music Festival {1,2,3,4}; Music Contest {3,4}; Road Show {3,4}; Central High Players {3,4}; Central Colleens {1,2,3}; Lininger Travel Club {2,3}; Inter-American Club {2,3}; Homeroom Representative {4}; Teacher's Helper {4}; Student Control {3}

PATRICIA HICKEY

Register Staff {4}; Feature Writer {4}; O-Book Staff {4}; A Cappella Choir {3,4}; Girls' Senior Glee {2}; Music Festival {2,3,4}; Opera {3,4}; Lininger Travel Club {2,3,4}; French Club {2,3,4}; Central Colleens {2}; Stamp Salesman {3}; Floor Captain {3}; Homeroom Representative {2}; Makeup {2}; Ushers {4}; Teachers Helper {3,4}; Road Show {4}; Senior Play {4}; Senior Committee {4}

RUBY ILLENE HODGE

National Thespians {4}; Central High Players {3}; Central Colleens {3}

BARBARA GIVENS HOEKSTRA

Girls' Senior Glee {3}; Girls' Junior Glee {2}; Music Festival {2,3}; Central High Players {2,3,4}; Lininger Travel Club {2,3,4}; Inter-American Club {3,4}; French Club {2,3}; GAA {1}; Homeroom Representative {3}; Teacher's Helper {3}; Makeup {2}; All-Girls' Party {4}; Road Show {4}

ROSWELL BILL HOWARD

National Honor Society

ROTC (1,2,3,4), Lieutenant Colonel (4); Outstanding Junior Cadet (3); COC (4), Secretary (4); NCOC (2,3), Treasurer (3); Silent Platoon (2); Ushers (2,4); Junior Honor Society (1,2,3); A Cappella Choir (3,4); Boys' Senior Glee (2); Boys' Junior Glee (2); Opera (2,3,4), Lead (4); Music Festival (2,3); Road Show (2,3,4); Homeroom Representative (1); Spanish Award (3); Inter-American Club (2,3); Mathematics Society (4); O-Club (4); Intramural Sports (1,2); Track (1,2,3)

DONNA LEA HOYE

National Honor Society

A Cappella Choir (3,4); Girls' Senior Glee (2); Opera (3,4); Road Show (3,4); Music Festival (2,3,4); National Thespians (4); Central High Players (4); Inter-American Club (2,3,4); Lininger Travel Club (4); Central Colleens (3); Homeroom Representative (4); Student Control (2); All-Girls' Party (4); Senior Committee (4); Senior Play (4)

JOHN Z. HOYER

ROTC (1,2,3,4), First Lieutenant (4); COC (4); NCOC (3); Ushers (2,3); Mathematics Society (4); Chess Club (2,3); Ice Skating Club (4); Inter-American Club (2,3); Boys' Bowling (4); Homeroom Representative (3); Teacher's Helper (4); Senior Committee (4)

DOLORES LA VERNA HUGHES

National Honor Society

Register Staff (4), Girls' Sports Editor (4); GAA (1,2,3,4), Vice President (3,4), Secretary (2), Sergeant-at-Arms (1); Badminton (1,2,3,4); Basketball (1,2,3,4); Baseball (1,2,3,4); Volley Ball (1,2,3,4); Tennis (3,4); Archery (1,2,3); Hockey (1,2); Girls' Bowling (4); Pep Squad (3,4); Class Officer (1,2), Treasurer (1), Sergeant-at-Arms (2); All-Girls' Party (1,2,4); National Thespians (4); Central High Players (3); French Club (2,3); Homeroom Representative (2,3); Stamp Salesman (3); Teacher's Helper (2,3); Student Control (1)

BETTY J. HULTMAN

National Honor Society

A Cappella Choir (4); Girls' Choir (3); Girls' Senior Glee (3); Girls' Junior Glee (1); Music Festival (1,3,4); Junior Honor Society (1,3); Office Assistant (3,4); Commercial Award (3,4); Central Colleens (1,2,3,4); Girl Reserves (1,2,3,4)

LEONA M. HUMLICEK

Junior Honor Society (1,2,3); Commercial Award (3); Girl Reserves (1,2,3,4), Treasurer (3,4); Central Colleens (1,2,3,4); Inter-American Club (2,3); Mathematics Society (4); Lininger Travel Club (4); Teacher's Helper (3); Student Control (2); Ping Pong (1,4); Senior Committee (4)

BERNADETTE C. IRWIN

Commercial Award (4); Lininger Travel Club (2,3,4); Central Colleens (2,3,4); Roller Skating Club (3,4); Student Control (4)

DONALD W. JACK

Homeroom Representative (2,4); Central High Players (1,2,3); Inter-American Club (4); Roller Skating Club (4); ROTC (1,2); Student Control (2,3); Senior Play (4)

ROBERTA HELEN JACKMAN

National Honor Society

A Cappella Choir (3,4); Girls' Senior Glee (2); Girls' Junior Glee (1); Music Festival (1,2,3,4); Opera (3); Junior Honor Society (1); Homeroom Representative (4); Girl Reserves (3,4); Central Colleens (2,3); Inter-American Club (3); Latin Club (2)

JEAN JACKSON

Girls' Junior Glee (1); Music Festival (1); Central Colleens (4); Lininger Travel Club (4)

MARILYN ALICE JENKINS

Girls' Senior Glee (2); Girls' Junior Glee (1); Music Festival (1,2)

ARLENE DELORES JEPPESEN

A Cappella Choir (3,4); Girls' Senior Glee (2); Girls' Junior Glee (1); Music Festival (1,2,3,4); Road Show (1,2,3); Opera (3); Makeup (1,3); Teacher's Helper (3,4); Student Control (2,3)

DONALD L. JOHNSON

A Cappella Choir (2,3); Boys' Senior Glee (1); Boys' Junior Glee (1); Opera (2); Road Show (1,2,3,4); Boys' Bowling (3); Track (2); Homeroom Representative (2); Stamp Salesman (2); Teacher's Helper (1); Senior Committee (4)

ROBERT EMMONS JOHNSON

ROTC (1,2,3,4); First Lieutenant (4); COC (4); NCOC (2,3); Crack Squad (3); Ushers (1,2); A Cappella Choir (2,3,4); Boys' Senior Glee (1); Boys' Junior Glee (1); Opera (2,3,4); Music Festival (1,2); Road Show (4); Boys' Bowling (4); Track (1); Homeroom Representative (1); Chess Club (4); Stamp Club (1); Student Control (1); Senior Play (4)

DELLA MAE JONES

Baseball (2,3,4); Basketball (2,3,4); Volley Ball (3); GAA (3,4); Girls' Senior Glee (2); Girls' Junior Glee (2); Music Festival (2); Central High Players (4); Lininger Travel Club (4); Teacher's Helper (3)

ELINORE JORGENSEN

Teacher's Helper (4)

GERALDINE RUTH KAHLER

GAA (1,2,3,4); Sergeant-at-Arms (2); Baseball (1,3); Basketball (1,3); Volley Ball (1,3); National Athletic Honor Society (1,3); Cheer Leaders (4); Girls' Senior Glee (4); Girls' Junior Glee (2); Music Festival (2); Central Colleens (4); French Club (3); Library Assistant (3); Senior Committee (4)

MYRNA RAE KAIMAN

Junior Honor Society (3); National Thespians (4); Central High Players (3,4); Lininger Travel Club (1,2,3,4); Central Colleens (1,2); Inter-American Club (1,2); Teacher's Helper (3)

SAM KAIS

Wrestling (1,2,3,4); State Champion (2,3,4); O-Club (1,2,3,4); Intramural Sports (1,2,3,4); Football (3,4); Basketball (1); Stage Crew (1,4); Homeroom Representative (1); Student Control (2,4); Teacher's Helper (4); Senior Committee (4)

MORTON SIDNEY KAPLAN

ROTC (2,3,4); Staff Sergeant (3,4); NCOC (3,4); ROTC Senior Band (2,3,4); ROTC Junior Band (3,4); Orchestra (3,4); Road Show (2,3,4); Ushers (3,4); French Club (3); Teacher's Helper (4); Senior Play (4)

CHARLOTTE JUNE KATZMAN

National Honor Society

A Cappella Choir (3,4); Girls' Advanced Senior Glee (2); Girls' Senior Glee (1); Girls' Junior Glee (1); Music Festival (1,2,3,4); Music Contest (4); Opera (3,4); Road Show (4); Register Staff (4); World Herald Correspondent (4); Junior Honor Society (1,2,3); Lininger Travel Club (1,2,3,4); Central Colleens (2,3,4); French Club (1,2,3); Mathematics Society (3,4); Inter-American Club (3); Stamp Salesman (3,4); Homeroom Representative (1); Senior Committee (4); Senior Play (4)

LOIS JEAN KELBERG

Homeroom Representative, Alternate (4); French Club (4); Inter-American Club (2); Stamp Salesman (3); Student Control (4); Volley Ball (1); Senior Committee (4)

JANELDA LEE KIOUS

A Cappella Choir (3); Girls' Senior Glee (1,2); Girls' Junior Glee (1); Music Festival (1,2,3); Opera (3); Central High Players (1,2); Teacher's Helper (3,4); Library Assistant (4); Stamp Salesman (3)

PHYLLIS ANN KIRSHENBAUM

A Cappella Choir (4); Girls' Choir (3); Girls' Senior Glee (1,2); Girls' Junior Glee (1); Music Festival (1,2,3,4); Central Colleens (1,2,3,4); Lininger Travel Club (1,2,3,4); Central High Players (4); Inter-American Club (2); GAA (1); Volley Ball (1); Ping Pong (1); Homeroom Representative (3); Teacher's Helper (3,4); Ushers (4)

RICHARD J. KOHAN

ROTC (1,2,3,4); First Lieutenant (4); COC (4); NCOC (3,4); Military Police (2); Ushers (2,3,4); Chess Club (1,2,3,4); Inter-American Club (1,2,3); Boys' Bowling (2,3); Stamp Salesman (3,4)

MARIAN PATRICIA KOLDBORG

National Athletic Honor Society (1,2,3,4); GAA (1,2,3,4); President (4); Baseball (1,2,3,4); Basketball (1,2,3,4); Volley Ball (1,2,3,4); Ping Pong (1,2,3,4); Badminton (1,2,3,4); Field Hockey (1,2); Archery (1,2); Soccer (1,2); Girls' Bowling (4); Pep Squad (3); Commercial Award (4); Central Colleens (4); Homeroom Representative (4); Stamp Salesman (3); Student Control (3,4); Senior Committee (4)

DOLORES IRENE KOLESZAR

Register Staff (4); Feature Writer (4); O-Book Staff (4); A Cappella Choir (3,4); Girls' Advanced Senior Glee (2); Girls' Senior Glee (2); Music Festival (3,4); Lininger Travel Club (1,2,3,4); Central Colleens (1,2,3); French Club (3,4); Inter-American Club (1,2); Ushers (2,4); Library Assistant (3); Makeup (2); Senior Committee (4)

JAMES E. KOLLE

Commercial Award (3); ROTC (1)

JEANETTE M. KOLLE

Commercial Award (3,4); Teacher's Helper (4)

VIRGINIA LEE KOMICKI

Homeroom Representative (2,4); Central High Players (3); Central High Players' Plays (4); Central Colleens (3); Lininger Travel Club (3); Girl Reserves (1); Roller Skating Club (2,3); Cheer Leaders (2,3); O-Club (3); Pep Squad (2); Tennis (1); Teacher's Helper (1,2,3); Senior Play (4)

JOSEPHINE KOOM

Register Staff (4); Advertising Manager (4); O-Book Staff (4); Girls' Choir (3); Girls' Senior Glee (2); Girls' Junior Glee (1); Music Festival (1,2,3); Central Colleens (2,3,4); Lininger Travel Club (1,2,3,4); Inter-American Club (1,2,3); Teacher's Helper (2,3,4); Senior Committee (4)

DORIS MAE KRECEK

National Honor Society

Girls' Senior Glee (2); Girls' Junior Glee (1); Music Festival (1,2); Office Assistant (3,4); Junior Honor Society (1,2); Homeroom Representative (3,4); Girl Reserves (1,4); Central Colleens (3,4); Latin Club (3); GAA (1); Teacher's Helper (1,2,3); All-Girls' Party (4)

MANFRED EMMANUEL KREITSTEIN

O-Club (2,3,4); Wrestling (2,3,4); Track (1); Stamp Club (2,3,4); Chess Club (1,2); Teacher's Helper (4)

DORIS MAE KRUPA

Girls' Choir (3); Girls' Senior Glee (2); Girls' Junior Glee (1); Music Festival (2,3); Road Show (2); Roller Skating Club (1,2,3,4); Treasurer (4); Lininger Travel Club (1,2,3,4); Central Colleens (2,3,4); Ice Skating Club (4); French Club (4); Homeroom Representative (2,4); Stamp Salesman (2,3); Makeup (2,3); Teacher's Helper (4); All-Girls' Party (4); Senior Committee (4)

LENORE ANITA KYLE

Commercial Award (3); Lininger Travel Club (4); Central Colleens (3); Latin Club (2); Girl Reserves (1,2,3); Student Control (3,4); Teacher's Helper (4); Homeroom Representative (1)

JACK LACY

Baseball (2,3,4); Football (3,4); Basketball (3,4); O-Club (2,3,4); ROTC (2); Student Control (2,3)

BETTY CLAIRE LAKE

Central Colleens (2,3,4); Lininger Travel Club (3,4); French Club (4); Senior Committee (4)

MARY LOUISE LAMBERT

A Cappella Choir (4); Girls' Choir (3); Girls' Senior Glee (2); Music Festival (2,3,4); Central Colleens (2,4); Latin Club (3); Pep Squad (2); All-Girls' Party (4); Senior Committee (4)

NANCY JOAN LANDWEHRKAMP

A Cappella Choir (4); Girls' Senior Glee (2,3); Music Festival (3,4); Opera (4); Road Show (3,4); National Thespians (3,4); Central High Players (3,4); Inter-American Club (2,3,4); Central Colleens (1,2); Lininger Travel Club (3,4); GAA (1); Student Control (2,3); All-Girls' Party (4); Senior Committee (4); Senior Play (4)

DOROTHY ANN LARSEN

ARTHUR LEFITZ

National Forensic League (4); Debate Squad (3,4); Debate Team (4); Chess Club (2,3); Central High Players (4); Discussion Club (3); Mathematics Society (4); Roller Skating Club (4); Track (2,3,4); Cheer Leaders (3,4); ROTC (1,2); Central High Players' Plays, Property Committee (4); Senior Committee (4)

RUTH LEHMER

National Honor Society

Register Staff (3,4), Copyreader (3), Reporter (3,4); National High School Journalism Institute, Honor Graduate (3); DAR Award (4); Junior Honor Society (1,2,3); Lininger Travel Club (1,2,3,4); Latin Club (2,3,4), President (3); Latin Award (3); Central Colleens (2,3); Central High Players (2,3,4), Marshal (4); French Club (3,4); International Relations Club (4); Mathematics Society (2,3,4), Sergeant-at-Arms (4); Teacher's Helper (2); All-Girls' Party (4); Senior Committee (4)

MILTON J. LEHR

Silent Platoon (3); Road Show (2,3); Ushers (2,3); Discussion Club (3); French Club (3); Ice Skating Club (4); Inter-American Club (3,4); Stamp Club (3); Wrestling (1,2); Boys' Bowling (4); Football (2)

JOAN LE MAR

A Cappella Choir (4); Girls' Senior Glee (3); Girls' Junior Glee (3); Music Festival (3,4); Register Staff (4), Reporter (4); Junior Honor Society (3); French Club (3,4); Lininger Travel Club (3,4); Central Colleens (4); Teacher's Helper (3,4); Stamp Salesman (3); Senior Committee (4)

HELGA LENK

DORIS LOUISE LEVENSON

Register Staff (4), Advertising (4); O-Book Staff (4); National Forensic League (2,3); Debate Squad (2,3); Junior Honor Society (1,2,3); Discussion Club (2,3), Secretary (3), Sergeant-at-Arms (2); Central High Players (1,2,3,4); French Club (2,3); Mathematics Society (3); Girls' Junior Glee (1); Music Festival (1); Homeroom Representative (2); Teacher's Helper (1,2,4); Senior Art (4)

NORMAN LONG

ROTC (3,4); Senior Band (3,4); Junior Band (1,4); Orchestra (2); Boys' Senior Glee (2); Music Festival (2); Road Show (3,4); French Club (4); Track (2,3,4); Basketball (4)

GLORIA JEAN LUCKETT

A Cappella Choir (4); Girls' Choir (3); Music Festival (1,2,3); Inter-American Club (3); Central High Players (4); Central Colleens (1,2,3); Roller Skating Club (1,2); Lininger Travel Club (1,2,3); GAA (1); French Club (4); Makeup (3); Homeroom Representative (2); Pep Squad (2); Student Control (2); Teacher's Helper (2)

JERRY F. MAGEE

O-Book Staff (4), Sports Editor (4); Register Staff (3,4); Assistant Sports Editor (4); ROTC (1,2,3,4); Second Lieutenant (4); COC (4); NCOC (3); Ushers (2); Road Show (4); Baseball (1,4); Basketball (3); Boys' Bowling (3,4); Tennis (3,4); Chess Club (2,3,4); Secretary (4); Treasurer (3); French Club (2,3); Homeroom Representative (1); Student Control (2); Senior Committee (4); Senior Play (4)

LEE T. MAGEE

ROTC (1,2,3), Sergeant (3); NCOC (3); Ushers (2,3,4); Road Show (4); Chess Club (2,3,4), Sergeant-at-Arms (3); French Club (2,3); Boys' Bowling (4); Tennis (4); Baseball (1); Student Control (2)

REX EDMOND MAIRE

ROTC (1,2,3,4); First Lieutenant (4); COC (4); NCOC (2,3); Crack Squad (3); Silent Platoon (2); Junior Honor Society (1,2); Junior Red Cross Council (2,3,4); Football (2,3); Wrestling (2); French Club (3,4); Senior Committee (4)

CLEVELAND MARSHALL

Track (1,2,3,4); Football (1,2,3,4); Basketball (1,4); Intramural Sports (3,4); O-Club (2,3,4); Teacher's Helper (4)

RICHARD ARLING MARSHALL

Art Contest (2,3,4); Greenwich Villagers (3); ROTC (1,2,3); Stage Crew (3,4)

MARCIA LEE McCAIG

Teacher's Helper (4); Titians (1)

LYLE DUANE McCLAIN

YVONNE McGUIGAN

Volley Ball (1,2,3,4); Basketball (1,2,4); Art Contest (4)

SERENA CLAIRE McKINNEY

A Cappella Choir (4); Road Show (4); Homeroom Representative, Alternatae (4); Senior Play (4)

SUZANNE LOVE McKOWN

Girls' Junior Glee, Accompanist (4); Boys' Junior Glee, Accompanist (4); Central Colleens (4); Girl Reserves (4)

HARRIETT JEAN McLELLAN

A Cappella Choir (4); Girls' Choir (3); Girls' Senior Glee (2); Girls' Junior Glee (1); Music Festival (1,2,3,4); Opera (4); Road Show (4); Register Staff (4); Advertising (4); Central High Players (2,3,4); Central Colleens (2); Linger Travel Club (1,2,4); Inter-American Club (2); GAA (1); Student Control (2,4); All-Girls' Party (4); Senior Play (4)

HOWARD BYRON MELCHER

Stage Crew (1,2,3,4); Road Show (1,2,3,4); Boys' Senior Glee (2); Boys' Junior Glee (1); Music Festival (1,2,3,4); ROTC (1,2); Homeroom Representative (2,3); Student Control (2); Teacher's Helper (1)

DORIS MAE MENSNIK

Girls' Senior Glee (2); Girls' Junior Glee (1); Music Festival (1,2); Orchestra (1,2,3,4); Opera (1,2,3,4); Road Show (4); Central Colleens (4)

JAMES R. SCOTT MILLER

Junior Honor Society (1,2); Mathematics Society (4); Chess Club (4); Latin Club (2); French Club (2); Boys' Bowling (2,3,4); Road Show (4); Student Control (3)

PAULINE D. MILONI

Central Colleens (3,4); Roller Skating Club (3,4); Lininger Travel Club (4); Girl Reserves (4); Pep Squad (3); Makeup (3,4); Ushers (3,4); Homeroom Representative (3); Teacher's Helper (2)

INOLIA JOYCE MOORE

Girls' Junior Glee (2,3)

JOYCE ANN MORGENSEN

Junior Honor Society (3); Girl Reserves (4); Latin Club (2); Stamp Salesman (3); Teacher's Helper (3,4)

ROSE K. MORITA

SALLY ANN MOROCCO

Homeroom Representative (3); Girl Reserves (1)

CAROL CASE MUNGER

National Honor Society

Junior Honor Society (1,2,3); Latin Club (4); President (4); French Club (2,3); Sergeant-at-Arms (3); Lininger Travel Club (2,3); Road Show (4); Stamp Salesman (3); Teacher's Helper (2,4); Senior Play (4)

E. ROBERT NEWMAN

National Honor Society

Junior Honor Society (1,2,3); Homeroom Representative (2,3); Mathematics Society (2,3,4); Discussion Club (2,3,4); French Club (2,3); Boys' Bowling (3,4); Intramural Sports (3,4); ROTC (1,2); Senior Play (4)

JOAN BARBARA NICKERSON

A Cappella Choir (3,4); Girls' Senior Glee (2); Opera (3,4); Music Festival (2,3,4); Road Show (4); Homeroom Representative (4); Lininger Travel Club (2,3); Central Colleens (2,3); Student Control (3,4); Ushers (3); All-Girls' Party (4); Senior Committee (4)

KARL FREDERICK NIEHAUS

National Honor Society

Junior Honor Society (2,3); Homeroom Representative (3,4); Latin Club (3); Chess Club (3); Boys' Bowling (4); Orchestra (2); Road Show (2); Teacher's Helper (2,4); Student Control (4); ROTC (1); Senior Committee (4)

MARGARET ELAINE NILSON

Central High Players (4); Girls' Senior Glee (4)

JOANNE NOBLE

National Honor Society

Miss Central XII (4); Junior Honor Society (1,2,3); Student Council (4); Secretary (4); A Cappella Choir (4); Girls' Senior Glee (2,3); Music Festival (2,3,4); Opera (4); Road Show (4); Latin Club (1,3); Secretary (3); Inter-American Club (2,3,4); Lininger Travel Club (3); Central Colleens (4); Central High Players (4); GAA (1); All-Girls' Party (4); Teacher's Helper (2,3); Ushers (4); Homeroom Representative (2); Senior Committee (4); Senior Play (4)

ALICE MAE NOVOTNY

Girls' Senior Glee (2); Girls' Junior Glee (1); Music Festival (2); Orchestra (2); Girl Reserves (1,2,3,4); Central Colleens (3,4); Homeroom Representative (3); Teacher's Helper (2,3)

CARYL JUNE O'BRIEN

A Cappella Choir (3,4); Girls' Senior Glee (2); Girls' Junior Glee (1); Opera (3,4); Road Show (3); Music Festival (1,2,3,4); Lininger Travel Club (2,3,4); Central Colleens (2,3,4); Inter-American Club (2,3); Mathematics Society (3,4); Roller Skating Club (1); Homeroom Representative (4); Teacher's Helper (4)

ROSEMARY O'GRADY

Girls' Senior Glee (3); Girls' Junior Glee (2); Road Show (2); Makeup (2,3); Central Colleens (2,3,4); Lininger Travel Club (2,3,4); French Club (3,4); Roller Skating Club (2,3); Central High Players (3); Student Control (4); Senior Committee (4)

LYDIA RUTH OLSEN

Girls' Junior Glee (1); Music Festival (1); Lininger Travel Club (1); Roller Skating Club (1); GAA (1,2); Basketball (1); Volley Ball (1); Baseball (1); Teacher's Helper (1,4)

JOY P. OLSSON

Teacher's Helper (4)

AMELIA M. ORDUNA

A Cappella Choir (4); Girls' Senior Glee (4); Girls' Junior Glee (3); Music Festival (3,4); Central Colleens (3); GAA (3,4); Basketball (2,4); Volley Ball (2,4); Baseball (2)

DARLENE MARIE OSBORN

Volley Ball (1,4); Baseball (1); Pep Squad (2,3); GAA (1,2,3,4); Girl Reserves (2,3,4); Inter-American Club (3,4); Central Colleens (3); Lininger Travel Club (3); Roller Skating Club (3); Teacher's Helper (3)

22

GENE W. OSHEROFF

ROTC (2,3,4), Sergeant (4); NCOC (3,4); Military Police (2); Ushers (2,3); French Club (3,4); Boys' Bowling (4); Teacher's Helper (3,4); Stamp Salesman (4)

MILTON PARKER

ROTC (1,2,3,4), Technical Sergeant (4); NCOC (3,4); Military Police (2,3); Ushers (2,3,4); Boys' Bowling (2,3,4); Football (1,2); Baseball (1,2); Chess Club (3); Student Control (2,3)

JAMES F. PATTON

ROTC (4), Technical Sergeant (4)

MELBA JOY PERCIVAL

Titians (1,2,3,4), President (4), Sergeant-at-Arms (3); Library Assistant (1,2,3,4); Ushers (1,2,3,4); Girl Reserves (4); Latin Club (3); Homeroom Representative (4); Girls' Junior Glee (1); Music Festival (1); Teacher's Helper (4); Student Control (1); All-Girls' Party (4); Senior Committee (4)

LOUISE MAXINE PERKINS

Linger Travel Club (3); Central Colleens (3); Latin Club (2); Girls' Junior Glee (1); Student Control (3)

GENEVIEVE SIGIRD PETERSEN

Girls' Choir (4); Girls' Senior Glee (4); Girls' Junior Glee (3); Music Festival (4); Road Show (4); Tumbling (4); Teacher's Helper (4)

KATHRYN M. PETERSON

National Thespians (4); Central High Players (3,4); Road Show (4); Linger Travel Club (3,4); Central Colleens (1,2); Greenwich Villagers (1); Makeup (2); Student Control (4); Teacher's Helper (3); All-Girls' Party (4)

VIRGINIA MARY PETRICEK

Register Staff (4), Reporter (4); Girl Reserves (2,3,4), President (4); Ice Skating Club (4); Latin Club (2); Homeroom Representative (3,4); Girls' Junior Glee (1,2); Music Festival (1,2); Student Control (1,4); Teacher's Helper (3); All-Girls' Party (4); Senior Committee (4)

JAMES ARTHUR PETRING

Junior Choir (4); Boys' Senior Glee (4); Hi-Y (3,4); Ice Skating Club (4); Ushers (4); Senior Play (4)

LENORA MARGUERITE PIERCE

Homeroom Representative (3,4); Basketball (1,2); Baseball (1); Central Colleens (4); Linger Travel Club (4); Library Assistant (4)

FRED ANTHONY PISASALE

Wrestling (2,3,4), State Champion (4); Tennis (2,3,4); Football (3,4); Baseball (3); Tumbling (4); O-Club (3,4); Boys' Junior Glee (4), Secretary (4); Junior Honor Society (1)

ROBERT C. PITTENGER

Senior Play (4)

NATALIE G. PLOTKIN

French Club (3,4); Ushers (4)

WAYNE POLICZ

A Cappella Choir (2,3,4); Boys' Senior Glee (1); Music Festival (1,2,3,4); Opera (2,3); Stage Crew (2,3,4); Student Control (2,4)

ELOISE ARDEN PRICE

National Thespians (4); Central High Players' Plays, Property Committee (3); Central High Players (3,4); Roller Skating Club (2); GAA (4); Volley Ball (2,4); Basketball (4); Girls' Bowling (4); Makeup (3); Teacher's Helper (3,4); Student Control (3); Senior Play (4)

EDWARD PODROUZEK

Wrestling (2,3), Manager (1,2); Baseball (2,3,4); O-Club (3,4); Stage Crew (4); Student Control (2,3,4)

VIRGINIA RADICIA

Titians (3,4); Sergeant-at-Arms (3,4); Central Colleens (2,3,4); Linger Travel Club (3,4); French Club (3); Girl Reserves (1); GAA (1); Homeroom Representative, Alternate (3); Teacher's Helper (2,3); All-Girls' Party (4)

RICHARD L. RANDALL

ROTC (1,2,3,4), First Lieutenant (4); COC (4), Treasurer (4); NCOC (3); Crack Squad (3); Road Show (3,4); French Club (3,4); Office Assistant (4); Football (3); Student Control (3,4); Senior Committee (4)

MAXINE LOUISE RANK

GAA (3,4); Pep Squad (3)

HAROLD L. RECHTER

National Honor Society

Junior Honor Society (2,3); ROTC (1); Inter-American Club (2,3,4); Mathematics Society (3,4); Chess Club (1,2)

FRANK T. REHMEIER

Stage Crew (2,3,4); Homeroom Representative (3,4); Stamp Salesman (3,4); Student Control (4)

JOAN CAROL REYNOLDS

National Honor Society

A Cappella Choir (4); Girls' Choir (3); Girls' Senior Glee (2); Girls' Junior Glee (1); Music Festival (1,2,3,4); Music Contest (3,4); Register Staff (4); Reporter (4); Junior Honor Society (3); Lininger Travel Club (1,2,3,4); Central Colleens (2,3,4); Latin Club (1,2,4); French Club (3,4); Inter-American Club (3); Road Show (3,4); Homeroom Representative (4); Teacher's Helper (3,4); Student Control (2)

WILFRED VOSS RICE

National Honor Society

ROTC (1,2,3,4); First Lieutenant (4); COC (4); NCOC (2,3); Road Show (2,3,4); Boys' Rifle Team (4); Ushers (2,3); Junior Honor Society (1,2,3); Chess Club (2,3,4); Vice President (4); Mathematics Society (2,3,4); Inter-American Club (2,3); Latin Club (2,4); Orchestra (2,3); Senior Band (1); Student Control (4)

HARRY DAVID RICHMAN

Chess Club (2,3,4); Mathematics Society (3,4); Inter-American Club (2); Discussion Club (3); Debate Squad (2)

BENNY ROBINSON

National Honor Society

Debate Squad (3); Debate Team (3); National Forensic League (3); Latin Award (3); Latin Club (2,3,4); Mathematics Society (3,4); Boys' Senior Glee (2); Music Festival (2); Junior Honor Society (2,3); Homeroom Representative (1,2,4); Stamp Salesman (3); Senior Committee (4); Senior Play (4)

JOAN LOUISE ROBINSON

Junior Honor Society (1); Girls' Junior Glee (1); Music Festival (1); Central Colleens (1,3,4); Central High Players (4); Inter-American Club (3); Latin Club (3,4); Lininger Travel Club (1,3,4); Stamp Salesman (1,3); Teacher's Helper (3); Senior Play (4); Senior Committee (4)

LORRAINE MURIEL ROBINSON

Central Colleens (2,3); Lininger Travel Club (2,3); Inter-American Club (1,2); Senior Committee (4)

LOIS A. ROHRIG

Art Contest (4); Greenwich Villagers (4); Girl Reserves (2,3,4); Secretary (4); Central Colleens (3); Senior Committee (4)

BRUCE M. ROSEN

Register Staff (4); Assistant Sports Editor (4); Junior Honor Society (1,2,3); Mathematics Society (2,3,4); Treasurer (4); Central High Players (4); French Club (3); Stamp Club (3,4); O-Club (3,4); Baseball (1,2,3,4); Basketball (1,2,3,4); Boys' Bowling (2,3,4); Intramural Sports (1,2,4); ROTC (1); Teacher's Helper (4); Ushers (4)

MARTHA ROSENBLATT

Junior Honor Society (1,2,3); Register Staff (3); Reporter (3); Senior Art (4); Art Contest (4); Greenwich Villagers (1); French Club (1,2,3); Lininger Travel Club (3); Central Colleens (2); Homeroom Representative (2)

GILBERT ROTH

ROTC (1,2,3,4); Sergeant (4); NCOC (4); Homeroom Representative (2); Stamp Salesman (2,3)

ROSELLA ELAINE RUD

Commercial Award (3,4); Central Colleens (3,4); Latin Club (2); Stamp Salesman (4)

PAULINE H. RUDOLPH

National Honor Society

A Cappella Choir (3,4); Girls' Senior Glee (3); Music Festival (3,4); Music Contest (3,4); Orchestra (3,4); Opera (3,4); Road Show (3,4); Junior Honor Society (3); Inter-American Club (3,4); International Relations Club (4); Central Colleens (3,4); Homeroom Representative (4); Stamp Salesman (3,4); Teacher's Helper (3); Student Control (3); All-Girls' Party (4); Senior Committee (4)

MARTHA RUMEL

Class Officer (3); Secretary (3); All-Girls' Party (3,4); Girls' Senior Glee (2); Girls' Junior Glee (1); Music Festival (1,2); Road Show (1,4); Lininger Travel Club (1,2,3); Central Colleens (1); Homeroom Representative (1,3); Student Control (1,2)

BARBARA JEAN RUSSUM

A Cappella Choir (3,4); Girls' Senior Glee (1,2); Girls' Junior Glee (1); Opera (2,3,4); Lead (4); Music Festival (1,2,3,4); Music Contest (4); Road Show (1,3); Central High Players (1,2); Roller Skating Club (1); GAA (1); Teacher's Helper (3); Ushers (4)

DOROTHY MAE SAALFELD

Homeroom Representative (4); Central Colleens (1,2); Girl Reserves (1,2); French Club (4); Lininger Travel Club (3); Greenwich Villagers (3); Makeup (2); Pep Squad (2); Teacher's Helper (2,3,4); Student Control (4); Senior Committee (4)

VIRGINIA MARIE SAITTA

Homeroom Representative (1,2); Girls' Bowling (4); Pep Squad (2); Volley Ball (1); Teacher's Helper (2)

RAMONA ELIZABETH SAUER

Commercial Award (3,4); Girl Reserves (1,2,3); Lininger Travel Club (4); Latin Club (3); Central Colleens (3); Student Control (2,3,4); Teacher's Helper (4)

FRED S. SCHEUERMANN

Register Staff (4); Feature Writer (4); National High School Journalism Institute (3); National Forensic League (2,3,4); Debate Squad (2,3,4); Debate Team (2,3,4); Junior Honor Society (1,2,3); Stamp Club (1,3,4); President (4); Stamp Salesman (3); Teacher's Helper (2)

ROBERT E. SCHILLER

ROTC (2,3,4); Staff Sergeant (3); NCOC (3); ROTC Band (2,3,4); Orchestra (1,2,3,4); Road Show (2,3,4); Opera (2,3); Dance Band (2,3,4)

26

MARY LOU SCHINKER

Central Colleens (3); Pep Squad (2)

BETTY LOU SCHNEIDER

Commercial Award (3,4); Central Colleens (4); Girl Reserves (3); Inter-American Club (1)

HAROLD V. SCHULTZ

ROTC (2,3,4); Second Lieutenant (4); COC (4); A Cappella Choir (3); Boys' Senior Glee (1,2); Music Festival (2); Road Show (4)

LEONARD WARREN SEAGREN

ROTC (1,2,3,4), Captain (4); COC (4); NCOC (3); Silent Platoon (3,4), Commander (4); Best Cadet Award (2); Ushers (4); A Cappella Choir (2,3,4); Boys' Senior Glee (2); Music Festival (2,3,4); Opera (2,3,4); Road Show (3,4); Latin Club (2,3), Secretary-Treasurer (2); International Relations Club (4), President (4); Hi-Y (3), President (3); Roller Skating Club (3,4); Library Assistant (4); Teacher's Helper (3); Student Control (3)

SALLY SEARS

Register Staff (4), Advertising (4); O-Book Staff (4); French Club (3,4), Sergeant-at-Arms (4); Lininger Travel Club (3,4); Latin Club (3); Teacher's Helper (3); Road Show (4); Senior Play (4)

ALICE CECILE SEIG

National Honor Society

O-Book Staff (4), Activity Co-Editor (4); Register Staff (4), Reporter (4); Junior Honor Society (1,2,3); Central High Players (3,4); Central High Players' Plays (3); Central Colleens (2,3,4); Inter-American Club (2,3,4); Lininger Travel Club (2,3,4); International Relations Club (4); Latin Club (4); Debate Squad (2); Library Assistant (3); Student Control (3); Teacher's Helper (2)

JO NATALIE SHALLCROSS

Teacher's Helper (4)

GERTRUDE ZELMA SHERMAN

Girls' Senior Glee (2,3); Girls' Junior Glee (1); Music Festival (1,2,3); National Thespians (4); Central High Players (2,3,4); Inter-American Club (2,3); Lininger Travel Club (2,3); Junior Honor Society (3); Student Control (2,3,4); Teacher's Helper (4); Senior Committee (4)

HELEN LOU SHERMAN

National Honor Society

O-Book Staff (4), Assistant Picture Editor (4); Register Staff (4), Reporter (4); Junior Honor Society (1,2,3); National Forensic League (2,3,4), Secretary (4), Treasurer (3); Debate Squad (2,3,4); Debate Team (3,4); Discussion Club (2), Secretary (2); Central Colleens (1,2,3,4); Lininger Travel Club (1,2,3,4); Latin Club (1,2); French Club (3); Class Officer (1), Sergeant-at-Arms (1); All-Girls' Party (1,3); Homeroom Representative (1,4); Teacher's Helper (3,4); Senior Play (4); Senior Committee (4)

MARGUERITE O. SHOLKOFSKI

A Cappella Choir (3,4); Girls' Senior Glee (2); Girls' Junior Glee (1); Music Festival (1,2,3,4); Opera (3,4); Road Show (3); Girl Reserves (1,2,3), Vice President (3); Cheer Leaders (3,4); Valley Ball (1,2); GAA (1,2); Homeroom Representative (1,2,3); Teacher's Helper (3,4); Library Assistant (3); Makeup (3)

SYLVIA ANN SHYKEN

Register Staff (4); Reporter, Makeup Assistant (4); O-Book Staff (4); Titans (1,2,3,4); Secretary (3); Treasurer (4); Library Assistant (2,3,4); Ushers (1,2,3,4); Junior Honor Society (3); Lininger Travel Club (1,2,4); Central Colleens (2,4); Inter-American Club (4); Roller Skating Club (4); Girls' Senior Glee (2); Inter-American Club (4); Roller Skating Club (4); Girls' Senior Glee (2); Girls' Junior Glee (1); Music Festival (1,2); All-Girls' Party (4); Senior Committee (4)

EVERTS SARGENT SIBBERNSEN

Junior Honor Society (3); Football, Manager (4); O-Club (4); Concert Band (1); Inter-American Club (2,3,4); Stamp Salesman (3); Student Control (4)

JACQUELINE D. SIEKERT

Baseball (2,3,4); Basketball (2,3,4); Volley Ball (2,3,4); Ping Pong (3,4); Girls' Bowling (4); Badminton (4); Pep Squad (3,4); GAA (2,3,4); Orchestra (2,3,4); Opera (3,4); Road Show (4); National Thespians (4); Senior Play (3,4); Homeroom Representative (4); Stamp Salesman (3); Teacher's Helper (3,4); Student Control (4); Senior Committee (4)

JOSEPH SIRRIANNI

National Honor Society

Enlisted in the United States Coast Guard January, 1946

GEORGE SLENKER

A Cappella Choir (4); Boys' Senior Glee (1,2,3); Music Festival (2,3,4); Opera (4); French Club (3,4); Ushers (4); Senior Committee (4)

CHARLES G. SMITH

ROTC (2,3,4); Technical Sergeant (4); NCOC (2,3,4); ROTC Senior Band (3,4); ROTC Junior Band (3); Senior Band (2); Junior Band (1); Road Show (2,3,4); A Cappella Choir (2); Boys' Senior Glee (1); Music Festival (1,2); Opera (2); Football (4); Teacher's Helper (3)

ERMA SMITH

Volley Ball (1); Ping Pong (1)

IRENE SHIRLEY SOIREF

Register Staff (4); Assistant Advertising Manager (4); Junior Honor Society (1,3); Central Colleens (1,2,3,4); Lininger Travel Club (1,2,3,4); French Club (3,4); Latin Club (1,2); Homeroom Representative (2); All-Girls' Party (3); Senior Committee (4); Senior Play (4)

JACK SOLOMON

National Honor Society

Register Staff (4); Feature Writer (4); A Cappella Choir (2,3,4); Boys' Senior Glee (1); Boys' Junior Glee (1); Opera (3,4); Music Festival (1,2,3,4); Road Show (2,3,4); Dance Band (3); National Forensic League (3,4); Treasurer (4); Sergeant-at-Arms (3); National High School Institute of Debate, Honor Student (3); Debate Squad (3,4); Debate Team (3,4); Junior Honor Society (2,3); Homeroom Representative (2,3); O-Club (2,3,4); Track (1,2,3,4); Captain (4); Central High Players (1,2,3); Mathematics Society (4); Teacher's Helper (2,3); ROTC (1,2); Senior Committee (4)

BERNICE LOUISE SOMMER

A Cappella Choir (2,3,4); Girls' Senior Glee (2); Girls' Junior Glee (1); Music Contest (3,4); Music Festival (1,2,3,4); Opera (2,3,4); Road Show (3,4); Lininger Travel Club (1,2,3,4); Central High Players (1,2); Central Colleens (4); French Club (2)

MARY CLARE SPPLIC

Commercial Award (3,4); Junior Honor Society (1); Girl Reserves (2,3,4); Ice Skating Club (4); Teacher's Helper (1,3); Girls' Junior Glee (1); Senior Committee (4)

SHIRLEY JEAN STAATS

Senior Art (4); Art Contest (4); Greenwich Villagers (3,4); Inter-American Club (2,3); Central Colleens (4); Lininger Travel Club (4); Junior Honor Society (1); Volley Ball (1); Teacher's Helper (3); Student Control (3); Senior Committee (4); Senior Play (4)

DONALD STERN

ROTC (1,2,3), Staff Sergeant (3); Crack Squad (3); Silent Platoon (2); Road Show (2); Basketball (4); Boys' Bowling (2); Senior Play (4)

RICHARD PAUL STEWART

ROTC (1,2,3,4), Captain (4); COC (4); NCOC (2,3); Boys' Rifle Team (2,3,4), Secretary-Treasurer (4); Intercity Rifle Team (4); Military Police (2,3,4); Ushers (2,3,4); Mathematics Society (2,3,4); Sergeant-at-Arms (2,3,4); Inter-American Club (3,4), President (3); Chess Club (2,3); Junior Honor Society (2); Concert Band (1); Orchestra (1,2); Road Show (4); Boys' Bowling (3,4); Golf (3,4); Homeroom Representative (3,4); Student Control (4); Senior Committee (4)

RUTH JOANNE STEWART

Central High Players (1,2,3), Historian (2); Lininger Travel Club (1,2,3,4); French Club (3,4); Inter-American Club (3,4); Junior Honor Society (1,2); Student Council (3); All-Girls' Party (3,4); Homeroom Representative (3); Girls' Senior Glee (2); Girls' Junior Glee (1); Music Festival (1,2); Road Show (4); Makeup (2); Teacher's Helper (4); Student Control (2); Senior Committee (4); Senior Play (4)

DOROTHY JEANNE STOKLAS

Class Officer (3), President (3); Road Show (2,3,4); All-Girls' Party (2,3); National Thespians (3,4); Central High Players (1,2,3,4); Roller Skating Club (2); Inter-American Club (2); GAA (1); Junior Honor Society (1); Homeroom Representative (3); Tumbling (4); Makeup (2); Teacher's Helper (4); Student Control (3)

DOROTHY IRENE STOVER

Titans (1); Student Control (1)

RAY FLOYD STRYKER JR.

ROTC (1,2,3,4), First Lieutenant (4); COC (4); NCOC (2,3); Crack Squad (3); Ushers (2,3,4); Road Show (2,3,4); Central High Players (4); Central High Players' Plays (4); Inter-American Club (2,3); Roller Skating Club (1,2); Wrestling (1); Teacher's Helper (4)

MARY LEE TAYLOR

National Honor Society

A Cappella Choir (3,4); Girls' Senior Glee (2); Girls' Junior Glee (1); Music Festival (1,2,3,4); Opera (3,4); Road Show (3,4); National Thespians (4); Central High Players (1,2,3), Sergeant-at-Arms (3); Central High Players' Plays (4); Publicity Manager (4); Register Staff (4); Feature Writer (4); O-Book Staff (4); Class Officer (1,2), President (1), Treasurer (2); Junior Honor Society (1,2); Student Council (2,3); Junior Red Cross Council (1,2,3,4), Vice President (4); All-Girls' Party (1,2,3,4); Lininger Travel Club (1,2,3); Central Colleens (2); French Club (3); Homeroom Representative (2,3); Ushers (4); Senior Play (4)

MARCIA R. TEPPERMAN

Junior Honor Society (2,3); Class Officer (2,3), Vice President (2), Treasurer (3); All-Girls' Party (2,3); Student Council (1); Junior Red Cross Council (2,4); National Thespians (3,4); Central High Players' Plays (4); Central High Players (2,3,4); Central Colleens (3,4); French Club (3,4); Lininger Travel Club (2,3); GAA (1); Debate Squad (4); Homeroom Representative (3); Makeup (3); Road Show (3); Ushers (4); Teacher's Helper (4); Senior Play (4); Senior Committee (4)

FRANK WILLARD THOMAS JR.

Register Staff (3,4), Sports Editor (4); A Cappella Choir (2,3,4); Boys' Senior Glee (2); Boys' Junior Glee (2); Music Contest (3,4); Music Festival (3,4); Opera (2,3,4); Male Quartet (4); Road Show (3,4); Assistant Manager (4); ROTC (1,2,3,4), Technical Sergeant (4); NCOC (3,4); Military Police (2); Ushers (3); Junior Band (2); Football (2,3,4); Boys' Bowling (4); Wrestling, Manager (3); Basketball (2); Track (1); O-Club (3,4); Homeroom Representative (3); Stamp Salesman (3); Art Contest (1)

PATRICK E. THOMAS

National Honor Society

ROTC (1,2,3,4), Captain (4); COC (4), Vice President (4); NCOC (3); Boys' Rifle Team (2,3,4), Captain (4); Ushers (2,3,4); Junior Honor Society (1,3); French Club (3,4), Vice President (4); Mathematics Society (3,4); Boys' Bowling (2,3,4), Secretary (4); Hi-Y (3); Homeroom Representative (2,3); Student Control (4); Road Show (4); Senior Committee (4)

JO ANN THOMPSON

Latin Club (4); Senior Committee (4)

JUNE PEARL THOMPSON

Girls' Choir (3); Girls' Senior Glee (2); Girls' Junior Glee (1); Music Festival (1,2,3); Linger Travel Club (2,3,4); Inter-American Club (3,4); Latin Club (1,2); Central Colleens (4); Central High Players (4); Girl Reserves (1); Homeroom Representative (3)

MARIAN FRANCES THOMPSON

Latin Club (4)

HELEN G. TIAHRT

A Cappella Choir (3,4); Music Contest (2,4); Music Festival (3,4); Orchestra (1,2,3,4); Road Show (4); Roller Skating Club (3); Ushers (3,4); Commercial Award (4)

DONALD RAYMOND TORPY

Stage Crew (3,4); Homeroom Representative, Alternate (1); Student Control (4); Teacher's Helper (2)

DONALD JAMES TOSAW

Track (1,2,3,4); Football (3,4); Wrestling (2,3); Intramural Sports (4); O-Club (4); Student Control (4)

IRA CHARLES TRACHTENBARG

O-Club (4); Basketball (3,4); Boys' Bowling (4); Football (3); Baseball (1); ROTC (1); Student Control (3,4)

GEORGE E. TRAUB

ROTC (1,2,3,4), Sergeant (3,4); NCOC (3,4); Ushers (1); Road Show (4); Boys' Bowling (4); Track (4); Art Contest (4); Greenwich Villagers (4); French Club (3); Chess Club (2); Homeroom Representative (2)

3

ELIZABETH ANNE TROUGHTON

O-Book Staff (4); Activity Co-Editor (4); Register Staff (4); Reporter (4); Junior Honor Society (1,2,3); Central Colleens (2,3,4); Lininger Travel Club (2,3,4); Central High Players (2,3,4); Inter-American Club (2,3); International Relations Club (4); Makeup (3); Debate Squad (2); Student Control (3); Library Assistant (3); Senior Play (4); Senior Committee (4)

SIMMY TURKEL

Central Colleens (2,3); Inter-American Club (1,2); Girl Reserves (4); Lininger Travel Club (2)

MARGERY BLANCHE TURNER

National Honor Society

Register Staff (3,4); Assistant News Editor (4); Reporter (3); National High School Journalism Institute, Honor Student (3); National Thespians (4); Central High Players' Plays (3,4); Property Committee (3); Central High Players (2,3,4); Junior Honor Society (3); Inter-American Club (2); Lininger Travel Club (2); Makeup (3); Teacher's Helper (2); Senior Play (4); Student Director (4)

MARILYN ULMAN

National Honor Society

Register Staff (3,4); Reporter (3,4); National High School Journalism Institute (3); Junior Honor Society (1,2,3); Lininger Travel Club (1,2,3,4); Central High Players (1,2,3,4); Central Colleens (2,3); French Club (3,4); Latin Club (2); Ushers (3,4); Student Control (3); Teacher's Helper (3)

ALICE IRENE VAN BRUNT

A Cappella Chair (4); Girls' Senior Glee (2,3); Girls' Junior Glee (1); Music Festival (1,2,3,4); Opera (4); Central Colleens (1,2,3); Lininger Travel Club (1,2,3); Central High Players (4); Latin Club (3); French Club (3); Stamp Salesman (3); Teacher's Helper (3); Library Assistant (2)

JEANNINE LOUISE VAN HOUSEN

Baseball (1,4); Volley Ball (1,3); Girls' Bowling (4); GAA (3,4); National Athletic Honor Society (3); Commercial Award (4); Homeroom Representative (3); Central Colleens (4); Teacher's Helper (4)

KATHLEEN LEE VANN

Girls' Senior Glee (2,3,4); Music Festival (2,3); Lininger Travel Club (1,2,3,4); Central Colleens (3,4); Junior Honor Society (3); Homeroom Representative (2); Inter-American Club (1,2); French Club (3); Greenwich Villagers (1); Teacher's Helper (3)

IRVING VEITZER

ROTC (1,2,3,4); Captain (4); COC (4); NCOC (3); Silent Platoon (3); Road Show (3); Ushers (3,4); Register Staff (3,4); Assistant Sports Editor (4); Junior Honor Society (3); Boys' Bowling (2,3,4); Intramural Sports (4); Tennis (3,4); Mathematics Society (2,3,4); Inter-American Club (1,2); Chess Club (2); Stamp Club (2); Red Cross Messenger Corps (3); Student Control (3); Senior Committee (4)

JO VINCI

Girls' Senior Glee (3,4); Girls' Junior Glee (2); Music Festival (3); Road Show (2); Central Colleens (4); Homeroom Representative (3); Teacher's Helper (3,4); Student Control (1,2)

LOIS MAE VOGEL

Girl Reserves (2,3,4); Senior Committee (4)

VIRGINIA ELLEN WALTERS

A Cappella Choir (4)

JOANNE CLAIRE WEIR

Girls' Senior Glee (2,3); Girls' Junior Glee (1); Music Festival (1,2,3); Tennis (2,4); GAA (1,2); Central Colleens (2,3,4); Lininger Travel Club (2); Mathematics Society (3); Teacher's Helper (1,2,3); Student Control (2)

MARY PATRICIA WEIR

Girls' Senior Glee (2,3); Girls' Junior Glee (1); Music Festival (1,2,3); Tennis (3); Basketball (1); Ping Pong (1,2); National Athletic Honor Society (3); GAA (1,2); Central Colleens (2,3,4); Lininger Travel Club (1,2,4); Central High Players (2,3); French Club (4); Latin Club (1); Teacher's Helper (2,3); Student Control (2,3)

DORIS REBECCA WEISE

Junior Honor Society (1,2,3); Lininger Travel Club (2,3,4); Central Colleens (2,3,4); Inter-American Club (4); Girl Reserves (1); GAA (1); Teacher's Helper (4); Ushers (4); Senior Committee (4)

MYRA DEL WELCH

Commercial Award (3,4); Titians (1,2,3); Ushers (1,2)

PATRICIA ELLEN WELCH

A Cappella Choir (4); Girls' Senior Glee (3); Music Festival (3); National Thespians (3,4); Central High Players (3,4); Opera (4); Library Assistant (3); Student Control (3)

MARILYN WELLMAN

Central High Players (3,4); Historian (4); Baseball (2); Volley Ball (2,3); Makeup (3); GAA (2,4); Girls' Junior Glee (1,2); Music Festival (1,2); Inter-American Club (1); Teacher's Helper (3,4); Stamp Salesman (3); Student Control (2); Senior Committee (4)

MARJORIE ELOISE WHEELER

Commercial Award (3); Girls' Junior Glee (1); GAA (1); Teacher's Helper (2,3)

WILLIAM C. WHITED

ROTC (1,2,3,4); First Lieutenant (4); COC (4); NCOC (3); Military Police (4); Silent Platoon (2,3); Ushers (3,4); A Cappella Choir (4); Road Show (2,3,4); Track (4); Boys' Bowling (2); Basketball (1); Football (1); Homeroom Representative (4); Stamp Salesman (4); Inter-American Club (3); Library Assistant (4)

ELAINE JUNE WHITEMAN

Central Colleens (4); Roller Skating Club (1); Girls' Bowling (4); GAA (1); Teacher's Helper (2)

KATHERINE LOUISE WILBURN

Girls' Senior Glee (2); Girls' Junior Glee (1); Music Festival (1,2)

LAURENCE WILKERSON

A Cappella Choir (4); Boys' Junior Glee (3); Road Show (4); Tumbling (3,4); Football (1,2); Tennis (1,2); Track (2); Hi-Y (2); O-Club (1)

RALEIGH CLAY WILKERSON

ROTC (1,2,3), Sergeant (3); NCOC (3); Crack Squad (2,3); Ushers (2); A Cappella Choir (3); Road Show (4); Inter-American Club (2); Track (4); Homeroom Representative (2); Teacher's Helper (4)

KAY WILLEY

Volley Ball (1); Baseball (1)

BARBARA LOUISE WILLIAMS

A Cappella Choir (3,4); Girls' Senior Glee (2); Music Festival (2,3,4); Lininger Travel Club (2,3,4); Central Colleens (2,3); Central High Players (4); French Club (3); Latin Club (2); Homeroom Representative (3); Student Control (2)

DORIS LUCILLE WILLSON

Girls' Senior Glee (3,4); Girls' Junior Glee (1,2); Music Festival (2,3,4); Central Colleens (3); French Club (3); Girl Reserves (1); GAA (1)

ARLENE JOY WINER

A Cappella Choir (4); Girls' Choir (3); Girls' Senior Glee (2); Girls' Junior Glee (1); Music Festival (1,2,3,4); Girl Reserves (1,2,3,4); Sergeant-at-Arms (2); Central High Players (2,3,4); Central Colleens (1,4); Lininger Travel Club (2,3,4); French Club (3,4); GAA (1); Makeup (3,4); Stamp Salesman (3,4); Student Control (1,4); Teacher's Helper (4); Library Assistant (1); Ushers (4); Senior Committee (4)

DEAN WAYNE WINSTROM

A Cappella Choir (4); Music Festival (4); Road Show (4); Junior Band (4); Student Control (3)

PHYLLIS L. WOHLNER

National Honor Society

A Cappella Choir (2,3,4); Girls' Senior Glee (1,2); Girls' Junior Glee (1); Music Festival (1,2,3,4); Opera (3,4); Road Show (4); All-Girls' Party (1,4); Lininger Travel Club (1,2,3,4); Central Colleens (2,3,4); Inter-American Club (3,4); Mathematics Society (3,4); Latin Club (1); Junior Honor Society (1,2,3); Teacher's Helper (2,4); Student Control (2); Homeroom Representative (2)

DONALD R. WOODS

ROTC (2,3,4), Technical Sergeant (4); NCOC (4); Silent Platoon (3); Junior Band (4); National Thespians (4); Central High Players (4); Road Show (4); Football (2); Track (2); Senior Play (4)

NEVA MAE WOODYARD

Girls' Junior Glee (2); Orchestra (2); Pep Squad (2)

JO ANN WORTHMAN

Homeroom Representative (3); Library Assistant (4); Volley Ball (1)

COREY JEFFERSON WRIGHT

ROTC (1,2,3,4), Major (4); COC (4); NCOC (3); Military Police (2,3,4), Commander (4); Ushers (2,3,4), Commander (4); Road Show (4); Register Staff (3,4), Assistant Sports Editor (4); Basketball (1,2,3,4), Letterman (2,3,4), Captain (4), Manager (1); Baseball (1,2,3,4), Letterman (2,3,4); Football (3,4), Letterman (3,4); Boys' Bowling (2,3,4); Intramural Sports (1); National Athletic Honor Society (4); O-Club (2,3,4); Track (1,4); Student Council (4); Homeroom Representative (2,4); Student Control (2,3); Senior Committee (4)

BARBARA J. YOUNG

Girls' Senior Glee (2); Girls' Junior Glee (1); Music Festival (1,2); Central Colleens (4); GAA (1); Student Control (4)

WILLIAM YOUNG

O-Club (3,4); Basketball (3); Football (2,3), Manager (3); Baseball (1); French Club (4); Greenwich Villagers (3); Inter-American Club (1,2); Student Control (2)

JOSEPH STEVE ZAJICEK

O-Club (3,4); Baseball (1,4); Boys' Bowling (4); Football (3); Track (3,4); Intramural Sports (3); Stage Crew (3); Homeroom Representative (3); Teacher's Helper (4); Student Control (4)



JOSEPHINE FRISBIE
Senior Girls' Counselor



HELEN McCONNELL
Executive Senior Sponsor

SENIOR POPULARITY CONTEST



Betty Fesler
Ideal Central Girl



Betty Caldwell
Most Likely to Succeed



Pat Hickey
Most Popular



Martha Rumel
Prettiest



Ruth Lehmer
Best Student



Roswell Howard
Ideal Central Boy



Rodney Carlson
Most Likely to Succeed



Jerry Ries
Most Popular



Linae Anderson
Best Looking



Jonathon Goldstein
Best Student



Elizabeth Fullaway
Best Actress



Pat Ahern
Best Artist



Pauline Rudolph
Best Musician



Dorothy Deffenbaugh
Best Dancer



Donna Hoyer
Best Voice



Jack Focht
Best Actor



Bennett Raduziner
Best Artist



Kay Srb
Best Musician



Dick Duda
Best Dancer



Frank Thomas
Best Voice

SENIOR POPULARITY CONTEST



Alice Van Brunt
Best Natured



Joanne Noble
Peppiast



Joan LeMar
Most Sophisticated



Wendy Corkin
Best Line



Dolores Hughes
Best Athlete



Richard Randall
Man About Town



Dean Winstrom
Biggest Bluffer



Richard Broderdorp
Worst Woman Hater



Jim Coufal
Best Line



Corey Wright
Best Athlete



Carol Munger
Best Dressed



Suzanne Bockes
Most Personality



Dolores Koleszar
Wittiest



Ruth Stewart
Most Romantic



Lee Taylor
Sweetest



Sanford Bloom
Best Dressed



Bob Johnson
Most Personality



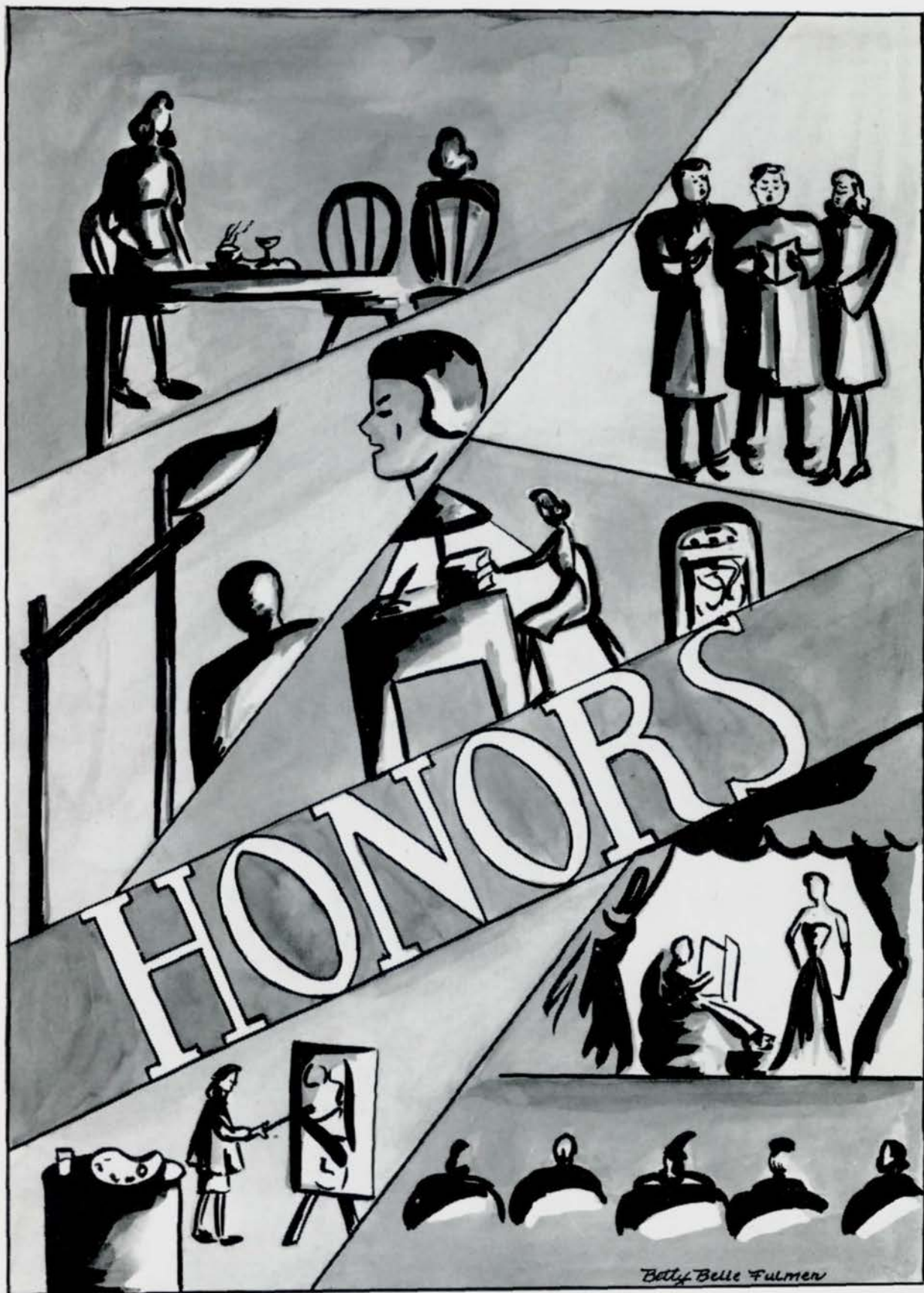
Don Woods
Wittiest



Philip Gilmore
Biggest Caveman



John Hoyer
Best Mannered





NATIONAL HONOR SOCIETY

Taylor, Reynolds, Lehmer, Jockman, Ott, Caldwell, Humlicek, Plotkin, Adams, Sherman, Deffenbaugh, London, Ulman
 Green, A. Feldman, Hove, Fessler, Augustson, Rechter, Goldstein, Robinson, Newman, Howard, Broderdorp, Rice, Niehaus
 Polisky, Solomon, Seig, Ahern, Focht, Anderson, Thomas, Knappie, Fullaway, Turner, Kreeck, Hultman, Hughes
 Kolar, E. Feldman, Rudolph, Mungger, Beber, Kadis, Carlson, Noble, Bercovici, Katzman, Albert, Wohliner, Hershorn
 Not in picture: Striranni

NATIONAL HONOR SOCIETY

The National Honor Society is an organization which honors those graduating seniors who have made outstanding records and who actively participated in school enterprises during their years at Central.

The organization had its beginning in 1918 when Joseph G. Masters, former principal of Central High School, suggested that a National Honor Society for high school students be organized. A constitution was drawn up by Mr. Masters and adopted by the National Association of Secondary School Principals in 1921. This is the twenty-fifth consecutive year that Central students have been elected to the society.

This spring a faculty committee with Mr. J. Arthur Nelson, principal, as chairman met to elect those seniors from the upper third of the class who were best qualified for membership in the society. After careful consideration of each eligible student on the basis of character, scholarship, leadership, and service, the committee selected 15 per cent of the senior class for this honor.

Now nation-wide in its scope, the society has nearly three thousand chapters representing all forty-eight states, the District of Columbia, the Territory of Hawaii, the Canal Zone, and American schools in South America and China.



JUNIOR HONOR SOCIETY — GAMMA CHAPTER

Garon, Bernstein, Ostronic, Forbes, Jacobs, Sykora, McBride, Magid, Denenberg, Zevitz, Shyken,
Rechter, Edwards
Veitzer, White, Colton, Moore, Freeman, K. Smith, Mellinger, Fox, Fairchild, Byrne, Bilz, Kellman, Bolker
Doran, M. Smith, Savidge, Merriam, Koch, Bath, Kennedy, Haggart, Bennett, Walters, McCreedy,
Osoff, Weinberg
Maxwell, Ridpath, Hiller, Moffet, Burns, Nordell, Berger, Reynolds, Wistedt, Haselton, Rasmussen,
Baliman, Rundell
Not in picture: Allen, Rhoades, Schneider



JUNIOR HONOR SOCIETY — DELTA CHAPTER

Anderson, London, Conboy, Randall, Cohen, Cloyd, Vavra, Smith, Knoke, Wilburn, Saltzman
 Hanson, Robbins, Burstein, Lashinsky, Goldstein, Schneiderman, Beebe, Alexander, Scott, Miller, Leuder
 Overholser, Hunt, Robison, Riddell, Rusk, Hughes, Fox, McMillan, Swoboda, Wencel, Winberg
 Chudacoff, Overbaugh, Daugherty, Duniap, Burkenroad, Gilinsky, Johnson, Karr, Saunders, Mendelson,
 Ciculla, Middleton

Not in picture: Maseman, Noodell, Wolverton



JUNIOR HONOR SOCIETY — EPSILON CHAPTER

Hiatt, Frankel, Armbrust, Rosenstock, Ferer, S. Lewis, Golding, Perlmeter, P. Lewis, Combs, Evers
 Harding, Williams, Emery, Venger, Robin, Abramson, Stoehr, Weisman, Boukal, Richie, Breen
 Glissman, Carpenter, Freeman, Estrand, Beber, Stern, Richards, Carville, Slogar, Layher
 Roxberg, Galpert, Larkin, Stevenson, Curtis, P. Smith, Murphy, Johnson, Bernstein, Marx, Friedman

Not in picture: Edgar, Hampton, Hill, Olson, L. Smith



SENIOR COMMITTEE CHAIRMEN, OFFICERS, AND SPONSORS

Gorelick, Fulmer, Caldwell, Augustson, Hamilton, Katzman
 Broderdorp, Miss Frisbie, Srb, Carlson, Beber, Miss Tauchen
 Miss Pratt, Rudolph, Ott, Wright, Ries, Green, Mrs. McConnell



SENIOR COMMITTEES

Kelberg, Gans, Haarmann, Landwehrkamp, Veitzer, J. Magee, Winer, Handler, Fowler, Weise, Spelic, Percival
 Vogel, Thompson, Soiref, Staats, Hoyer, Knapple, Ahern, Cunningham, LeMar, Hanger, Gerber,
 Lehmer, Benson
 Lambert, Noble, Maire, Hoyer, Gilmore, Thomas, Anderson, Bush, Facht, Robinson, Niehaus, Albert
 Badger, R. Stewart, Kais, D. Stewart, Nickerson, Humlicek, Petricek, Saalfeld, Crowley, Carleman, Krupa,
 Brookstein, Corenman, Diamond



CADET OFFICERS' CLUB

Ries, Schoultz, Berry, Chasen, Focht, Hoyer, Haykin, Seagren, Magee, Andre
Feldman, Johnson, Stryker, Browning, Rice, Gilmore, Whited, Carstenson, Maire, Christenson, Swartz
Veitzer, Stewart, Wright, Broderdorp, Fesler, Howard, Sgt. McGrath, Cahoon, Anderson, Thomas, Bloomquist



BETTY JANE FESLER
Honorary Lieutenant Colonel

Battalion Headquarters
Lt. Col. ROSWELL HOWARD
Commanding
Major RICHARD BRODERDORP
Executive Officer
Major COREY WRIGHT
Plans and Training Officer
Captain LINAE ANDERSON
Adjutant
First Lt. ALBERT FELDMAN
Supply Officer

Freshman Battalion Hdqrs.
Major WILBUR CAHOON
Commanding
Captain RICHARD STEWART
Adjutant—Ordinance Officer

CADET OFFICERS' CLUB

President . . . RICHARD BRODERDORP
Vice-President . . . PATRICK THOMAS
Secretary ROSWELL HOWARD
Treasurer RICHARD RANDALL
P.M.S & T. COLLINS SPENCER
Instructors:
M/Sgt. PALMER PETERSON
S/Sgt. JOSEPH McGRATH
Principal J. ARTHUR NELSON
Faculty Sponsor F. H. GULGARD



ROSWELL HOWARD
Lieutenant Colonel

Freshman Company 3
Captain STEVE SWARTZ
Commanding
First Lt. WILLIAM WHITED
Commanding First Platoon
Second Lt. HAROLD SCHOULTZ
Commanding Second Platoon

ROTC BAND
Captain KAY SRB
Commanding
First Lt. EDWARD BERRY
Commanding Junior Band
First Lt. JOHN BROWNING
Commanding First Platoon
Second Lt. JAY CHASEN
Commanding Second Platoon



RICHARD BRODERDORP
Major, Executive Officer

Company A
Captain BARNEY KADIS
Commanding
First Lt. BLUE CARSTENSON
Executive Officer
First Lt. REX MAIRE
Commanding First Platoon
First Lt. JOHN HOYER
Commanding Second Platoon

Company B
Captain LEONARD SEAGREN
Commanding
First Lt. PHILIP GILMORE
Commanding First Platoon
Second Lt. GERALD RIES
Commanding Second Platoon

Company C
Captain PATRICK THOMAS
Commanding
First Lt. WILLIAM CHRISTENSEN
Executive Officer
First Lt. RICHARD RANDALL
Commanding First Platoon
Second Lt. ARISTIDES ABARIOTES
Commanding Second Platoon

Company D
Captain IRVING VEITZER
Commanding
First Lt. WILFRED RICE
Commanding First Platoon
Second Lt. GERALD MAGEE
Commanding Second Platoon

Freshman Company 1
Captain RUSSELL BLOOMQUIST
Commanding
Second Lt. JAMES ANDRE
Executive Officer
First Lt. RAY STRYKER
Commanding First Platoon
Second Lt. MARTIN HAYKIN
Commanding Second Platoon

Freshman Company 2
First Lt. ROBERT JOHNSON
Commanding
First Lt. RICHARD KOHAN
Commanding First Platoon
Second Lt. DALLAS FOCHT
Commanding Second Platoon



COREY WRIGHT
Major, Plans
and Training Officer



WILBUR CAHOON
Major Commanding
Freshman Battalion



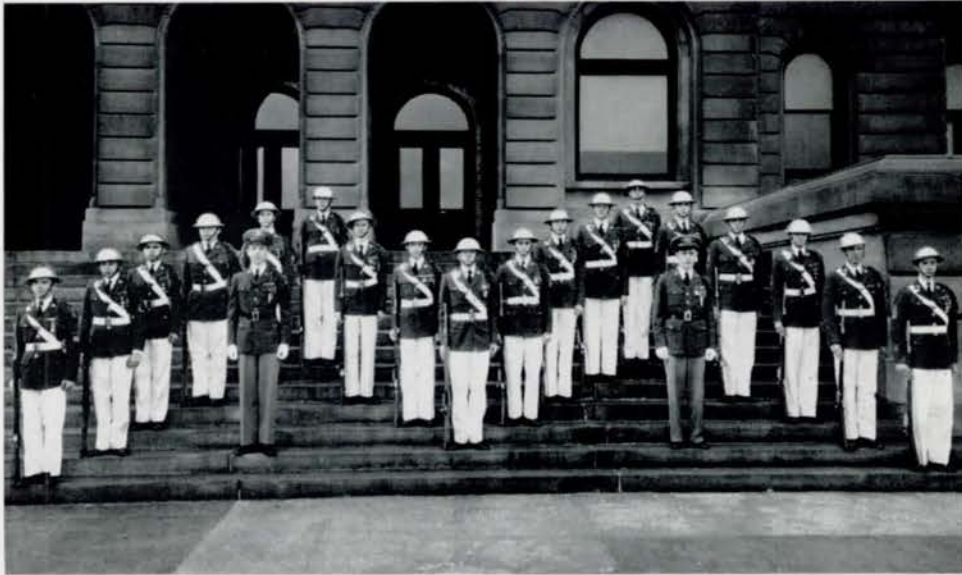
R. O. T. C. BAND

Bursik, McNichols, Bertshofer, J. Smith, W. Smith, C. Smith, Blotcky, Holtz, Bergquist
 Demorest, Bloomer, Bollinger, La Shelle, Price, Wise, Kaplan, Moore, Will
 Gregory, Malec, Mead, Carlson, DiMauro, Long, Bighia, Oberman, Clark
 Berry, Browning, Srb, Sacca, Alperson, Ehrenberg, Chasen, Carstenson, Hornstein



RIFLE TEAM

Thompson, J. Smith, Stewart, Thomas, Rice, Broderdorp, Bowman, Claeson
 Moore, K. Smith, Pommerenk, Jauss, Roccafurte, T. Branch, Cloyd, P. Branch



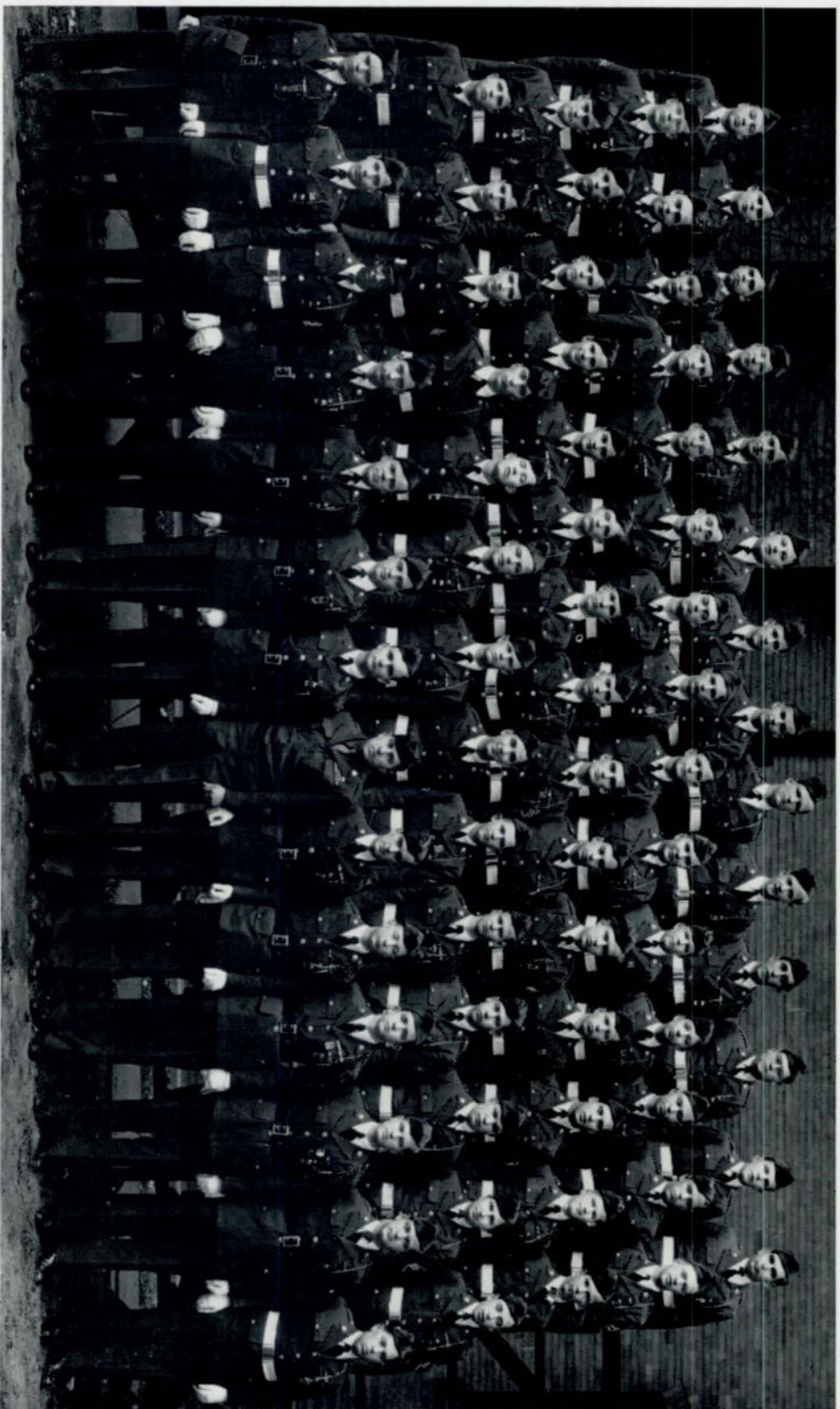
CRACK SQUAD

		Lepinsky						Rabe				
	Dinsmore	Patterson	Hale			Olsen	Paulson	Haggart				
	Maire					White		Kremers		Kirk		
Warner		Cahoon		Merriam			Anderson	Van		Wells		
Cooper										Koch		
Byrne												



SILENT PLATOON

Fairchild, Zerbe, Kolar, Colton, Henderson, Goodwin, Novak, Pedersen
 Wilburn, McNulty, Peterson, Johnson, Rosenquist, Sage, Wellman, E. Phelps, Gendler
 Veitzer, Hunigan, Slack, Vogt, Seagren, W. Phelps, Heins, Maskovitz, Hunter



NON-COMMISSIONED OFFICERS' CLUB

Fairchild, Maire, Warner, Lepinsky, Slack, Kolm, T. Phelps, Moch, W. Smith, F. Rusk, Robe, Kohan, Cloyd, Yousem
 Evans, McNulty, Sage, Rosenquist, Wellman, D. White, Kennedy, Both, Biggs, Moore, Branch, Freeman, Glenn, Mickel, Iske
 O. White, W. Phelps, Randall, Peterson, Bowman, R. Rusk, Vogel, Katz, Moskovitz, Hinchliff, J. Smith, Kaplan, Dinsmore, Billing
 Zerbe, Resnick, Gendler, Miilder, Hunter, Mellinger, Campbell, Dreier, K. Smith, Patterson, Mackie, Novak, Cooper
 Byrne, Veltzer, Cunningham, Koch, Merrion, Kremers, Fox, Sgt. McGrath, Van Kirk, Olsen, Hoggart, Paulson, Hornstein, Green



STUDENT COUNCIL

Middleton, Saunders, R. Fox, Malek, Ritchie, J. Fike, Fiddock,
Cloyd, Bailey, Kennedy, Bursik, Porter, Mendelson
D. Fox, Wright, Beber, Carlson, Knapple, Noble, Mrs. Jensen

THE STUDENT COUNCIL

The Student Council, Central's mainstay of democratic student government, has been active in both community service and student organization since 1939. With the express purpose of facilitating friendly relations between the student body and the faculty through active participation in school affairs, the members of the Council have concentrated their efforts on the promotion of such events.

In addition to administrating school affairs, the Council has aided reconversion by promoting the Red Cross and Community Chest drives, and by selling treasury bonds and stamps. It also has charge of the memorial plaque which is presented to the school in honor of Central's boys who have given their lives in World War II. Other activities include organizing home-room representatives, sponsoring school assemblies, forming teachers' helpers and ushers' bureaus, checking student activities, sponsoring the annual girls' party, and acting as student host at "open house". This year the Council held a meeting with the faculty to explain the work of the organization.

Present members of the Student Council were elected by the various classes in a school-wide election. They choose their own officers. For this year they were Rodney Carlson, president; Margaret Knapple, vice-president; Joanne Noble, secretary; Donald Fox, treasurer.

The Student Council is under the sponsorship of Mrs. Irene Jensen, F. Y. Knapple, and Principal J. Arthur Nelson.



REGISTER STAFF . . . FIRST SEMESTER

E. Feldman, Green, Rosen, Swartz, Bockes, Veitzer, Gray, Gilman, Koom, McLellan, Kolar, Levenson
 Hanger, Petricek, Koleszar, Raduziner, Seig, Fullaway, Haykin, Knapple, LeMar, Carleman, Hickey,
 Sears, Adams
 Sherman, Katzman, Polsky, Soiref, Goldstein, Augustson, Scheuermann, Solomon, Turner, Castro, Lehmer,
 Reynolds, Taylor, Cohn
 London, Ulman, Fulmer, A. Feldman, Wright, Magee, Thomas, Kadis, Albert, Bercovici, Bernstein, Hughes

REGISTER STAFF

FIRST SEMESTER

SECOND SEMESTER

Barney Kadis.....	Managing Editor.....	Barney Kadis
Judy Albert.....	Editor-in-Chief.....	Judy Albert
Marsha London.....	Make-up Editor.....	Albert Feldman
Elizabeth Fullaway.....	Associate Editor.....	Elizabeth Fullaway
Caryl Bercovici.....	News Editor.....	Caryl Bercovici
Frank Thomas.....	Sports Editor.....	Frank Thomas
Eleanore Bernstein.....	Business Manager.....	Eleanore Bernstein
Josephine Koom.....	Advertising Manager.....	Josephine Koom
Donald Green.....	Circulation Manager.....	Donald Green
Jonathan Goldstein.....	Literary Editors.....	{ Jonathan Goldstein Ruth Lehmer
Charlotte Katzman.....	World-Herald Correspondent.....	Charlotte Katzman
Mary Castro } Andriana Adams }	Proof Readers.....	{ Mary Castro Andriana Adams
Delores Cohn } Betty Fulmer }	Exchange Editors.....	Betty Gilman
Ruth Lehmer.....	Librarian.....	Elaine Kolar



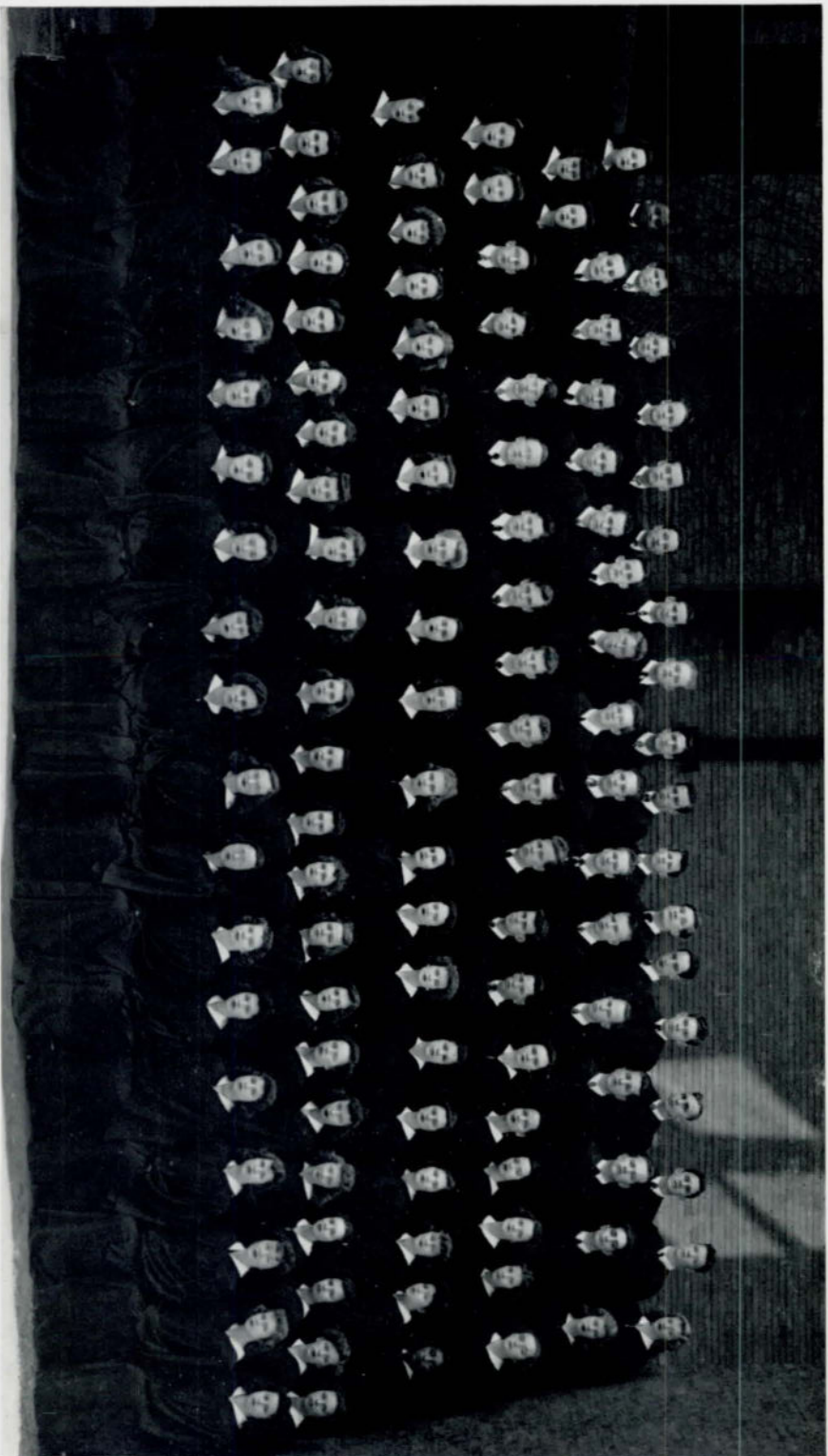
REGISTER STAFF . . . SECOND SEMESTER

E. Feldman, Green, Rosen, Swartz, Bockes, Veitzer, Gray, Gilman, Koom, Plotkin, Edwards, Kolar, Levenson
 Bolker, Doran, Katzman, Savidge, Koleszar, Fullaway, Haykin, Knapple, Bennett, Carleman, Hickey,
 Sears, Adams
 Sherman, Polsky, Soiref, Augustson, Haggart, Goldstein, Scheuermann, Bonner, Solomon, Turner, Castro,
 Lehmer, Taylor, Shyken
 London, Ulman, Moffet, Fulmer, A. Feldman, Wright, Magee, Thomas, Karis, Albert, Bercovici,
 Bernstein, Hughes



O-BOOK STAFF

Adams, Taylor, Castro, Rasmussen, Bercovici, Koom, Shyken, Gorelick, Levenson
 Badger, Polsky, Spelic, Wistedt, Ott, Staats, Plotkin, Ludwig, Hanger
 Hickey, Troughton, Handler, Fulmer, Raduziner, Pleskach, Ahern, Seig, Koleszar
 Sherman, Sears, Haykin, Magee, Gilman, London, Kolar, Green, Feldman



A CAPPELLA CHOIR

Cohn, R. Williams, Faier, Pederson, Mallo, Miller, Roccatorte, J. Peterson, Hudson, Mandolfo, Mickel, Henderson, Bertshofer, Bloch, Sykora, Slenker, W. Thomas, McLellen, Edwards, Abromson, Daley, Seogren, Street, Carlson, White, Gilmore, Ehrenberg, Black, Doppert, Winstrom, Whited, Augustson, Hammon, Price, Asbyll, Carlson Porter, Doran, Solomon, Zerbe, Phillips, Howard, F. Thomas, Wells, Fach, Campbell, D. Johnson, Dewell, Erickson, Steele, Catron, Burstein, Avera, Gellus, Crowley, Corenman, LeMar, H. Peterson, Winer, Roessig, Van Brunt, Nordell, C. Peterson, Landwehrkamp, A. Reynolds, Walters, Baumer, Fike, Hultman, Gilinsky, Kirshenbaum, Sanders, Taylor, Lambert, Holtz, Hickey, Rudolph, Ott, Ruscum, Trustin, Koopman, Butera, Ordung, Jeppeson, Duffenbaugh, Wohner, Welsh, Sholkofski, Fulmer, Corkin, O'Brian, B. Williams, McKinney, Tjahrt, Suchan, Dyos, Noble, Hamilton, Jackman, Fesler, Smith, Hoyer, Sommer, Muxen, Hesler, Katzman, Vauck, Faldman, Gorelick, Bernstein, Koleszor, Nelson, Wemmer



GIRLS' CHOIR

McAndrews, Sparks, Karr, Gamerl, Travis, Evers, Jameson, Smith, Baker, J. Peterson, Hanson, Ryan,
 Getscher, Fike, McGlone, Ferer
 Childs, Cosgrove, Redfield, Johnson, Ruzicka, Nolting, Downs, Boetel, Weinhardt, Leonard, Christlieb,
 Clark, Martison, Champine, Fielding, Groff
 Foster, Morris, Beshears, Scarpello, Fuller, Schiratti, Samson, Parsons, Wencel, McPherran, Ernst, M. Nelson,
 Jackson, Gilbert, Solomon, White
 Vinci, Policz, Overholser, Krelle, Bauer, Swaboda, Slaughter, Crawford, Packer, Deal, Ashford, Hunt,
 Jacobsen, S. Nelson, Levenson, Noodell
 Wilburn, G. Petersen, Asplund, Consolino, Saunders, Scott, Byrnes, Willson, Shaw, Goodlett, Alexander,
 Morita, Chudacoff, Stratton, Petrow, Duncan



JUNIOR A CAPPELLA CHOIR

Ciculla, Christensen, O'Hanlon, Raznick, Phifer, Wilkerson, Radda, Kirshenbaum, Adams, Kuklin, Bragg,
 Robinson, King, Manley
 Samson, Firestone, Axelson, Armbrust, Lefitz, Holub, Reese, Besen, Kurtz, Wells, Cremeens, Tesar, Cooper
 Baliman, Ben-Ora, Evans, Swartz, Siebert, Heiam, Cambridge, Meyer, Petring, Clark, Gorelick, Milone,
 Steele, Quigley
 Lawson, Brewer, Ludwig, Rasmussen, Thomas, Grodinsky, Oak, LaShelle, Rimmerman, Hannibal, Geisler,
 Robbins, Hansen, Mendelson, Black, Harding
 Staats, Fisher, Davenport, Crawford, McFayden, Bergh, Lueder, Wiseman, Robison, Blacker, Putt,
 Burkenroad, Raapke, Vingers, Foxall, Menck



SENIOR ORCHESTRA

Bergquist, Bloomer, London, Sterenberg, Fitzsimmons, Berry, Stoklas, Gregory
 Roddy, Mason, Cosgrove, Hovdet, McMillan, G. Srb, Baukal, Siekert, Menshik
 Colnic, Roxbury, Clark, J. Smith, Bighia, Ehrenberg, Bursik, Di Mauro, Sacca
 Tjahrt, Rudolph, Kaplan, Carlson, K. Srb, W. Smith, McNichols, Hornstein, Bertishofer



JUNIOR ORCHESTRA

Innis, Brande, Doyle Woods, Don Woods, Winstrom, Duda, Keiner, Greenberg, Gregory
 Spence, Hovdet, Anderson, Smith, Srb, Wise, Sterenberg, Long, von Dorn



DEBATE

Faier, Burstein, Sykora, Milder, Schneiderman, Hager, Fox, Saltzman
 Sherman, Finer, Burkenroad, Lefitz, Lashinsky, Denenberg, Carignan, Tepperman, Radicia
 Smith, Bonner, Scheuermann, Ahern, Mr. Nelson, Gendler, Solomon, Goldman, Feldman

DEBATE

Despite the lack of a debate class during the second semester and various coaching difficulties throughout the season, the debate team completed another successful year by placing third in the National Forensic League district sweepstakes tournament for 1946.

Principal J. Arthur Nelson, with the aid of student teacher Stewart Jones, assumed the coaching duties after the departure of Mrs. Lorraine Wade. Individual honors in the National Forensic League meet went to Albert Feldman, who placed first in extemporaneous speaking; Jack Solomon, first in dramatic declamation; Patricia Burkenroad, first in oratorical declamation; Helen Peterson, second in dramatic declamation; and Arnett Bonner, third in original oratory. Arthur Lefitz, Herbert Denenberg, Steve Swartz, and Fred Scheuermann entered the debate division.

In the Lincoln invitational tournament, which was the equivalent of a statewide meet, the two Central teams received superior ratings by winning eight of their ten debates. Pat Ahern, Helen Sherman, Arthur Lefitz, Albert Feldman, and Jack Solomon composed the teams.

Pat Ahern, by virtue of her superior ratings at both the district meet in Omaha and the state meet in Lincoln, traveled to Iowa City for the regional tourney where she placed fourth.

Albert Feldman, Jack Solomon, Pat Ahern, and Helen Sherman made the trip to the Sioux City invitational tournament where Albert won the extemporaneous speaking contest and placed third in individual debate ratings and Jack Solomon received second in individual debate ratings.



SENIOR PLAY

Tepperman, Lenk, Plotkin, Price, Peterson, Gilinsky, Fesler, Staats, Koom, Fowler, Carleman, Komicki, Wilson, Robinson
 Green, Feldman, Johnson, Armbrust, Carstenson, Goldstein, Beber, Swartz, Soiref, Hangar, Winer, McLellan, Weise
 Sherman, Badger, Kaplan, Browning, Jack, Focht, Stern, Gilmore, Fullaway, Wellman, Bercovici, Avera, Hickey, Benson
 Welch, Deffenbaugh, Taylor, Ott, Woods, Landwehrkamp, Hoye, Turner, Pittenger, Lefitz, Bernstein, Troughton, Fulmer, London



SENIOR PLAY

Sherman, Shyken, Gerber, Kelberg, Magee, Petring, Slenker, Solomon, Coufal
 Bernstien, D'Agosta, O'Grady, Lake, Cunningham, Noble, Haarmann, Lambert
 Gendler, Siekert, Staats, Bockes, Koleszar, Gilman, Hickey, Stewart, Cohn



CENTRAL HIGH PLAYERS

Chasanov, Ebright, Leonard, Hunt, Hoyer, Fesler, Bailey, Luckett, Jackson, Fike, Devereux, Hagel, Lehmer, Catalano, Edwards
 Clark, Goldstein, Colomba, Feldman, Kestermeier, Estrada, Hoekstra, Landwehrkamp, Haselton, Carter, Kavan, Brookstein, Fulmer, Crowley, Lashinsky
 Cohn, Gorelick, Faier, Augustson, L. Lefitz, Armbrust, Hesler, Bercovici, Lotz, Baumer, Jones, Hamilton, Hanger, J. Levenson, D. Levenson
 Benson, Crouch, A. Lefitz, Dappert, Knobelauch, Katz, Ahern, Kennedy, Focht, Gendler, Asbyll, Freeman, Coburn, Hiller, Carleman
 Badger, Finer, Consolino, Holtz, Eastlack, Henderson, Cohn, Deffenbaugh, Burkenroad, Ashford, Cooper, Doran, Kirshenbaum, Corkin, Bernstein



CENTRAL HIGH PLAYERS

McAndrews, Quigley, Menck, Winehardt, D. Peterson, Wintraub, K. Peterson, White, Price, Young, Stonebrook, Parsons, Tepperman
 Morrill, Solomon, Robinson, Osoff, Traughton, Thomas, Turner, Winer, Porter, Mooberry, McPherren, Ulman, Sherman, Stoklas
 Marx, Phillips, Simon, Nogg, Riddell, White, Whited, Seig, Vauck, Todd, Fulmer, Vaid
 Moore, Kaiman, Williams, Ott, Van Brunt, Slack, Myrah, Yundt, Noble, Muxen, McLellan, Whitehead, Staats, Welch



THESPIANS

McAndrews, Morrill, Maxwell, Dorothy, Bickel, Hagel, Carter, Feldman, Young, Sherman, Tepperman, Stoklas, Lashinsky
 Ciuro, Peterson, Fesler, Landwehrkamp, Hoge, Turner, Myrah, Price, Siekert, Hughes, Winehardt, Karr, Hanger
 Benson, Muxen, Henderson, Baumer, Doran, Avera, Todd, Rice, Latz, Miller, Edwards, Osoff, Deffenbaugh, Petrow, Carleman, Hunt, Hodge, Ahern, Kennedy, Dapper, Bloom, Carstenson, Thomas, Ott, Cohn, Hiller, Finer, Holtz, Fulmer, Hayes, Peterson, Gendler, Asbyll, Yundt, Taylor, Menck, Stonebrook, Welch, Chasanov

NATIONAL THESPIANS

Among the highest honors obtainable in high school dramatics is membership in the National Thespians. Chartered at Central in 1931 and sponsored by Miss Myrna Vance Jones, this organization affords the students membership for life.

Qualifications for joining the Thespians are one lead or two minor parts in a three act play, or a lead in six one act plays. Following the ceremonial initiation, each new member receives a membership certificate and a one year's subscription to the National Thespian magazine, "Dramatics", which is acclaimed the outstanding high school dramatic magazine.

This year the traditional Thespian one act play presented in the Road Show was "Amour", an original one word play written by the parents of Blue Carstenson. The cast included Joyce Stonebrook, Carmen McAndrews, Don Peterson, and Blue Carstenson. Among their other activities, the Thespians provide a play for the entertainment at the annual Central High Players banquet in May.

After the tragic death of former President Shirley Krajicek, on March 16, Elaine Lashinsky, secretary-treasurer, became president of National Thespians. With the membership increasing annually, this year's group of National Thespians consists of sixty-five boys and girls.



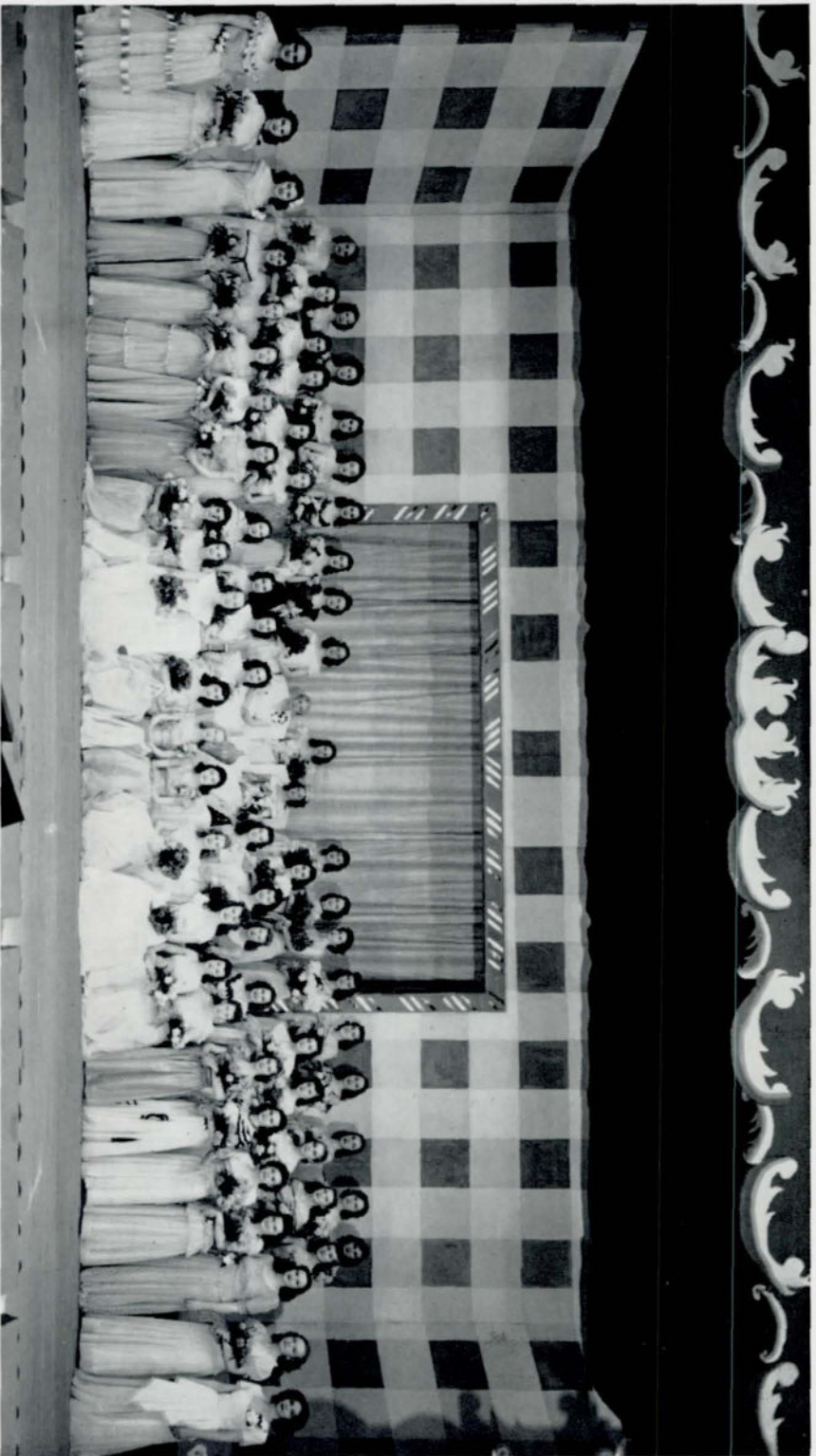
HOMEROOM REPRESENTATIVES . . . FIRST SEMESTER

Nigro, N. Vogt, D. Peterson, Adams, Abramson, McNichols, Riddell, Johnson, Gilmore, Fullaway, Wells, Roccacorte, Beebe, Pollack, Kolar, Moore, J. Pierce, Chasanov
 Heins, Kjellsen, Hampton, Schneiderman, Smith, Malec, H. Vogt, White, Glesman, Vierregger, Porter, Reynolds, Gunderson, Petricek, Moore, Menck, Stonebrook, Krupa, D. Green, Komicki
 Forsythe, Lacy, Stacy, Bernstein, J. Fike, Bailey, Ritchie, Todd, Baker, Stroebke, Crawford, Osoff, Pierce, O'Brien, Clark, Groff, Wemmer, Hurska, Percival
 Davis, Stewart, Jackman, Roth, Jack, Bursik, Van Kirk, Kennedy, G. Peterson, Hesler, Hoye, Ferer, Peckham, Champine, Stepenson, Rassmussen, Muxen, Miller, Middleton
 Abariotes, D. Fox, Wright, Pleskach, C. Beber, Hollander, Milder, Knapple, Noble, Haggert, Wize, Clayd, R. Fox, Finer, Wintroub, Feldman, Mendelson, Harris, Holt



HOMEROOM REPRESENTATIVES . . . SECOND SEMESTER

Heins, Fairchild, N. Vogt, Pullen, Pizzato, McNichols, Riddell, Robinson, Wells, Dyas, Christensen, Percival, Staats, Robison, Stoehr, Feldman, Mendelson
 Sherman, Williams, Cooper, Jackman, Hampton, Malec, H. Vogt, Johnson, Beebe, Peckham, Swoboda, Alexander, McCreedy, Moore, Green, Larkin, Saalfeld, Glissman, Venger
 Lashinsky, Bezman, Robbins, Krecek, Fike, Bailey, Ritchie, Todd, Cohen, Albert, Osoff, Pierce, Clark, Bernstein, Colton, Read, Krelle, Wise
 Abramson, Rudolph, Izenstat, Merriam, Patterson, Zerbe, Reese, Kennedy, Moskovitz, Hoye, Kelberg, Ferer, Baumer, Nickerson, Kellman, Rudkin, Carleman, Brown, Groff
 Middleton, Byrnes, Huffer, Slagr, Stewart, Koldborg, Clipson, Beber, Vavra, Lindell, Peterson, Curtis, Weiss, Fox, Anderson, Jackson, Valk, Burg, Harding
 Abariotes, Fox, Raduziner, Jack, Hollander, Anderson, Knapple, Noble, Whited, Wright, Fike, Porter, Schiratti, Zorinsky, Karr, Ludwig, Downs, Vingers, Forsythe



ALL GIRLS' PARTY

Rudolph, Koldborg, Krecek, Rumel, Hove, Fullaway, Saunders, Bailey, Hughes, Mrs. Knapple, Deftenbaugh, Her Majesty Joanne Noble, Miss Central XII, Ott, Taylor, Porter, Fiddock, Hoekstra, Landwehrkamp, Hamilton, Peterson, Petricek
 Curtis, Albert, Haarmann, Crowley, Lambert, Krupa, Ritchie, Wohler, Slogr, Golding, Feldman, Fike, Green, Benson, McLellan, Lehmer, Caldwell, Anderson
 Turner, Ahern, Robison, Rogers, Vingers, Stonebrook, Radtzig, London, Kolar, Knapple, Middleton, Evers, Rosenstock, Mendelson, Fesler, Stewart, Percival, Hanson, Solomon, Muxen, Srb, Hesler, Kellmann, Catalano



MISS CENTRAL XII, Joanne Noble, and her ladies-in-waiting, Roberta Ott, Dolores Hughes, and Dorothy Deffenbaugh reign for a night at the Carousel Ball.

ALL GIRLS' PARTY — CAROUSEL BALL

Joanne Noble was crowned Miss Central XII, Queen of the Carousel Ball, on the evening of March 29. Wearing the traditional purple cape and carrying a bouquet of white calla lilies, carnations, and snap dragons, she received her crown and sceptre from Mrs. F. Y. Knapple, wife of the dean of boys.

The queen and her ladies-in-waiting, Dorothy Deffenbaugh, Dolores Hughes, and Roberta Ott, were chosen the night of the ball from among nine princesses elected by the girls in school. Princesses were Eunice Feldman, Betty Fesler, Margaret Knapple, Lee Taylor, and Phyllis Wohlner.

Among the other girls marching were senior girls as countesses, class officers as duchesses, freshmen girls as pages, and Student Council girls.

Preceding the coronation a masquerade dance was held. A juke box provided music for dancing, and Student Council boys, in chef's caps and white uniforms, worked behind the coke and hot dog stand.

During a grand march, judges decided upon the best costumes and prizes were awarded to over fifty people.

The ball was sponsored by the Student Council. Mrs. Irene Jensen and Mr. F. Y. Knapple were general directors, and Miss Josephine Frisbie, Miss Elizabeth Kiewit, and Miss Ruth Pilling, girls counselors, were assistants.



GIRL RESERVES

Carville, Gans, Sandy, Walters, Chroma, Malm, Humlicek, J. McKown, Overbaugh, Bero, Ruby, Layher, Slavín, Novotny, Asplund
 Bilz, Casaccio, Matya, Consolino, Leibee, Slogr, Catron, Jackman, Dickey, Policz, Green, B. Vogel, L. Vogel, Holub, Dreier
 Hutter, Payne, Johnson, Morgensen, Burg, Yechout, Soukup, Cooper, Winer, Hanawalt, R. Caliendo, Schuler, Percival, Miloni, Colomba
 McGlone, Leo, Krecek, Hunter, Byrnes, Sharp, Galloway, Baumgarten, J. Spelic, Fredkin, Doran, M. Spelic, Butera, J. Caliendo, Emley
 S. McKown, Guffey, Black, H. Kaplan, Caniglia, Petricek, J. Kaplan, Mech, Di Giacomo, Cimino, La Ferla, M. Consolino, Searcy, Black

GIRL RESERVES

Friendship for mankind, service to the community and the nation, tolerance toward all races and religions, and continuous striving toward better citizenship are the aims and purposes of the Girl Reserves, junior members of the Young Women's Christian Association.

To fulfill these high standards, the club has participated in many activities this year. The most recent project was the collection of money for the UNRRA food fund. The \$290 collected was used to buy hundreds of cans of food to be sent to the starving people of Europe. In addition, the girls stuffed cloth animals and dolls for children in the liberated countries, solicited money for the spring polio drive, and sold decal stickers as part of their school project.

In an effort to maintain cooperation and unity between the Central High Girl Reserves and the Girl Reserves of other schools, a bowling league was organized, weekly "Fun Nites" were conducted at the YWCA, and many recognition and symbol ceremonials were presented by the girls.

Officers for the past year were Virginia Petricek, president; Ellene Gans, vice-president; Lois Rohrig, secretary; Leona Humlicek, treasurer; and Rosamonde Johnson and Joan Spelic, sergeants-at-arms.

Club advisers are Miss Angeline Tauchen, Mrs. Fern McCready, Miss Betty Jane Backlund, and Miss Margaret Weymuller.



RED CROSS COUNCIL

Hogel, Haarmann, Maire, Haggart, Schroeder, D. Fox, R. Fox, R. Mendelson, Tepperman
E. Mendelson, Evenson, Taylor, Caldwell, Knapple, Henderson, Edwards, Forsythe, Adams



TITIANS

Mittlestadt, Hagerman, Doyle, Peterson, Ernst, Hanowalt, Lawson, Maguire
Gamerl, Radicia, Shyken, Handler, Walters, Ehlers, Bloom, Chambers
Birney, Hammer, Martison, Peckham, Fesler, Gerber, Mrs. Jensen, Percival



LININGER TRAVEL CLUB

Neiman, Buford, Ekstrand, Soukup, Yechout, Boetel, Beebe, Ernst, Brewer, Chudacoff, Belman, Ferer, Evers, Caliendo, D'Agosta
 Asplund, Fisher, Evenson, Bennett, Albert, C. Cuthbertson, Blacker, Bailey, Fox, Daugherty, Colvin, Devereux, Fuller, Baliman, Friedman
 Hickey, Carlson, Bauer, Baumer, Cohn, Cunningham, Cronland, Ashford, Bennett, Bolker, Finer, Butera, Colamba, Cohn, Crawford
 Bordy, Eisenstatt, Doran, Emery, Champine, Cooper, Edwards, Bockes, Alexander, Clark, Deffenbaugh, A. Cuthbertson, Carleman, Correll, Breen
 Chasanov, Bezman, Bloom, G. Cohn, Carlson, S. Porter, Smith, Fullaway, Caldwell, Bernstein, Dudley, Brookstein, E. Bernstein, Feldman, R. Cohn
 D. Bernstein, Diamond, Coufal, Downs, Eastlack, Murphy, N. Porter, M. Fike, J. Fike, Bergh, Crowley, Corkin, M. Bernstein, White, Forsythe



LININGER TRAVEL CLUB

Corenman, LeMar, Rabe, Christlieb, Deal, Haarmann, Landwehrkamp, Noble, Fesler, Hoye, Luckett, Wilson, Getscher, Jackson, McLellan, Kjellson, L. Lehmer
 Hiatt, Haggerman, Greenberg, Neiman, Burdic, McPherrin, Hamilton, Nordell, Hazelton, Humlicek, White, Osoff, O'Grady, Miloni, Hooper, Hammes, Middleton
 Goldstein, Losch, Greenberg, Yechout, Soukup, Jacobsen, Smith, Runyan, Mosom, Kellman, Handler, Gerber, Downs, R. Lehmer, Hanson, Gordon, Pierce, Lon'on
 Levey, Overholser, Williams, Hickey, Savidge, Hunt, B. Gilinsky, Kirkbride, Jones, Nelson, Noodell, Koom, Hanger, Horton, Young, Harding, Bernadette Irwin
 Milder, Lueder, Cox, Nogg, Fulmer, Grodinsky, Kirshenbaum, Oak, Hoagland, Krelle, La Shelle, McMillan, Leonard, Jameson, Hanson, O'Brien, Micklin, Izenstat
 Gendler, McFayden, Levenson, J. Gilinsky, Holtz, Lacy, Lake, Jensen, Rice, McCready, Katzman, Putt, Vingers, Krupa, Garrop, Hiller, Gamerl, Bernice Irwin



LININGER TRAVEL CLUB

Rundell, Hopkins, Quigley, Solomon, Willsie, Wencel, Shaw, Peckham, Swoboda, Trustin, Swanson, Downs, Sanders, Neiman, B. Smith
 Stephenson, Rabe, Thomas, Peterson, Martison, Simon, Scott, Schiratti, Scott, Stewart, Sommer, Robinson, Vann, Pradell
 Weinberg, Redfield, Reynolds, Stern, Wistedt, Weir, Seig, Ott, Staats, Troughton, Shrago, Carlson, Ulman, Shyken, Wahlner
 Sherman, Raznick, Zorinsky, Yawitz, Rosen, Soiref, Winer, Plotkin, Walters, Pierce, Perry, Weise, Radicia, Wemmer
 Sears, Saunders, Ruzicka, Raapke, Packer, Warren, Peterson, Sherman, Sauer, Thompson, Sakolaf, Reynolds, Priesman, Wintroub, Whitehead, Hickey

LININGER TRAVEL CLUB

The Lininger Travel Club, founded in 1903 and named for Henry Lininger, well-known Omaha traveler and explorer, is the oldest girls' organization at Central High School.

Although the group's activities were shifted during the war to various kinds of work for victory, including the sale of war stamps and bonds, this year Lininger has returned to its original program of lectures concerning travel experiences in other parts of the world.

However committees which roll bandages, knit afghans, and make scrapbooks for wounded soldiers in veterans' hospitals have continued to function along with the regular tea and program committees which accomplish the social and educational aims of the organization.

Officers for the first semester were Elizabeth Fullaway, president; Betty Caldwell, vice-president; Aurel Reynolds, secretary; Janice Redfield, treasurer; Marjorie Putt and Joan Fike, sergeants-at-arms.

In 1946 Mary Fike serves as Lininger president, with Nancy Porter, vice-president; Marilyn Bergh, secretary; Joan Fike, treasurer; Susan Porter, Jacqueline Murphy, Patricia Smith and Maxine White, sergeants-at-arms.

Club sponsors are Miss Virginia Lee Pratt, Miss Dorothy Cathers, Miss Ruth Pilling, Miss Juliette Griffin, Miss May Mahoney, and Miss Martina Swenson.



COLLEENS

Simon, Williams, Jameson, Doyle, Christensen, Downs, Vingers, Cox, Gans, Judd, Solomon, Ciculla, Vinci,
 Menshik, Benson
 Gamerl, Hanson, Cohn, Brookstein, Schneider, Winer, Runyan, White, Katzman, Wohlner, Robinson, Vann,
 Sherman, Bloom
 J. Moffet, P. Moffet, Bauer, Osoff, Slavin, Humlicek, Lindell, Kellman, Cunningham, Hultman, Plotkin,
 Grant, Mick, Rundell
 Evers, Perry, Milder, Martison, Grodinsky, Gilinsky, Rosen, Blacker, Colvin, Ryan, Baumer, Handler,
 Weinhardt, Dunn, Lambert
 Daprizio, Trustin, Geilus, Sokalof, Krecek, Catron, Albert, Bailey, Ludwig, Henderson, Bernstein, Garrop,
 Feldman, Novotny



COLLEENS

Goldstein, R. Mendelson, Mockelmann, Ebright, Jeppsen, Peckham, Swoboda, Fike, Alexander, Wencel,
 Cuthbertson, Eastlack
 Estrada, White, Hurwich, Lawson, Kohan, Racusin, Stein, Pierce, Raznick, Crowley, Belman
 Groff, Fisher, Levenson, Soiref, Nable, Seig, Hoagland, La Shelle, Fredkin, Walters, Whitehead, Christensen
 Sherman, Bernstein, Gendler, Diamond, Cohn, Holtz, Burkenroad, Roapke, Porter, Finer, Dreier, E. Mendelson



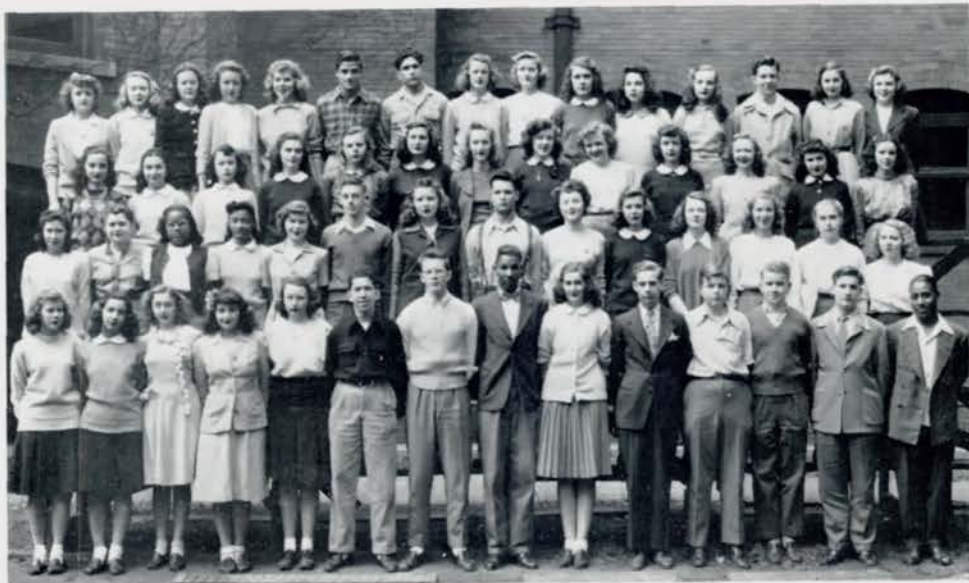
COLLEENS

Ferer, Chudacoff, Kahler, Koldborg, Estrand, Larkin, Eustice, Parsons, R. Caliendo, J. Caliendo, Milani, Colamba, Duhart, Noodell, Karr, Dunlap, Van Hoosen, Ernst, McBride, Staats, Wistedt, Edwards, Gerber, Radicio, Rubin, Hagerman, Rabe, Eisenstatt, Nordell, Bercovici, Brookstein, Haselton, Bolker, Doran, Shyken, Weise, Levy, Tepperman, Welch, Thompson, London, Holub, Sidner, Bernadette Irwin, Bernice Irwin, Chasanov, Hiller, Evanson, Cero, Bennett, Rudolph, Wintroub, Bernstein, Breen, Cohn, Schrago, D'Agosta



COLLEENS

Shalkofski, Wilson, Phillips, Soukup, Yechout, O'Grady, Cooper, Haarmann, Gilbert, Catalano, Koopman, Komicki, Nelson, Hanson, Luckett, Scott, P. Smith, Hartwig, Jacobsen, Lake, Getscher, Brewer, McCready, Kruse, Marer, Weinberg, Brodkey, Weir, Fielding, Hunt, Porter, Dickev, Rice, Reynolds, Downs, Bezman, Micklin, Greenberg, Ravitz, Yawitz, Suchan, Oak, Vauck, Nelson, Rimmerman, Gilman, Kirshenbaum, Marcus, Whitney, Burford, Neiman, Rosenstock, Bichel, Heagle, Gilinsky, Dyas, Ferer, Rud, Krupa, La Ferla



FRENCH CLUB

Badger, Evenson, Hagel, Hoermann, Kelberg, Breci, Garrotti, Gilbert, Berger, Alexander, Davis, Finer, Coats, Ban, Curry, Goldstein, Bezman, Corenman, Hickey, LeMar, Blacker, Dyas, Hannibal, Boetel, Hoekstra, Krupa, Holub, Deffenbaugh, Belman, Levenson, Edwards, Dudley, Ernst, Jacobs, Cahoon, Beber, Koleszar, Cronland, Bockes, Bennett, Lehmer, Blair, Carlson, Bardy, Andahl, Delores Cohn, Legge, Donald Cohn, Art Heiam, Forrest, Fullaway, Kulakofsky, Allan, Goodall, Bertlshofer, Graham



FRENCH CLUB

M. Maire, Slenker, Swartz, Venger, Zevitz, McBride, Sheridan, Street, Coufal, Praetorius, Perelman, Ries, Scarpello, Young, Overholser, Runyan, Smith, O'Grady, R. Maire, Rumel, Savidge, Saalfeld, Rabe, Tepperman, Ulman, Willmarth, Sidener, Ridpath, Winer, Weir, Stacy, Rahn, Swanson, Sanders, Marenof, Wemmer, Stewart, Dreier, Mooberry, Pitlor, Myrah, Browning, Al Heiam, Robb, W. Smith, Van Kirk, Rohlf, Rice, Warren, Waters, Reynolds, Osheroff, Wise, McCallister, Young, Randall, Caldwell, Thomas, Swoboda, Soiref, Raapke, Packer, Sears



INTER-AMERICAN CLUB

Howell, Fairchild, Lefitz, Landwehrkamp, Faier, Kuklin, Hoaglund, LaSalle, Hoyer, Hoekstra, Devereux,
 Lincoln, Fisher, Kohan
 Byrne, Kroeger, Fox, Bernstein, Hudson, Forbes, Hinchcliff, Franklin, Lehr, Asbyll, Fesler, Brookstein,
 Ferer, Levy
 Doyle, Christensen, Catalano, Baier, Cooper, Feldman, Blotcky, Gilinsky, Bassett, Anderson, Hagel,
 Bleicher, Edwards, Fuller, Baliman, Brown
 Graff, Lawson, Branch, Bowman, Armbrust, Arkin, Katz, Dienstfrey, Bercovici, Albert, Felding, Gerber,
 Horton, Baetel, Cohn, Lashinsky
 Duhart, Geilus, Carleman, Goldman, Anderson, Jack, Hunter, Hunigan, Commer, Brown, Fike, Bernstein,
 Garrop, Izenstatt, Friedman



INTER-AMERICAN CLUB

Wright, Novak, Vachal, Nagg, K. Smith, McBride, Rechter, B. Osheroff, Myrah, Art Heiam, Nordell,
 Murphy, Newman
 R. Stewart, Micklin, Rubenstein, Moore, M. J. Smith, S. Porter, S. White, Solomon, Neiman, Stein,
 Sherman, Simpkins, Smith
 Weise, M. White, Rubin, Rosen, Simon, Rimmerman, Milder, Slack, Menck, Stonebrook, Rosika, Phillips,
 Moffet, Redfield
 R. Mendelson, Newman, Rumel, Al Heiam, Sibbensen, Robinson, D. White, Reynolds, Thompson, Richards,
 Osoff, Trustin, Wohlner
 Shyken, Whitehead, R. Swartz, McNichols, J. Smith, Olson, Paulson, C. Peterson, Rudolph, McCreedy,
 N. Porter, Parsons, E. Mendelson



LATIN CLUB

Gitnick, London, Iske, Knoke, Bartlett, Goldstein, Bursik, Conboy, Jaus, Goodwin, Henry, Fike, Deal,
 Champine
 Bezman, Greenberg, Eisenstatt, Bernstein, Gorelick, Fox, Kennedy, C. Cuthbertson, Kintner, Bennett, Davis,
 Leuder, F. Crawford, Hanger
 Hiller, Finer, Brewer, Gradinsky, Cohen, Gendler, Johnson, Shelton, Byrnes, Beebe, Christlieb, Carignan,
 Cox, Baumer, Hanson
 Lehmer, Gamerl, Evers, Evenson, Correll, Gilinsky, Daugherty, Downs, Jacobsen, Clark, A. Cuthbertson,
 Coufal, A. Crawford, Gouldsmith, Black



LATIN CLUB

Warner, Randall, Melcher, Procopio, Yousem, Williams, Walt, Phelps, Rabe, Phelps, White, Smith,
 Schneiderman
 Willsie, Winberg, Hamilton, Oldero, Robison, Thompson, Riddell, Seig, Paulson, Putt, Peckham, Noodell
 Nigro, McKinley, Zerbe, Reese, Rosenquist, F. Rusk, R. Rusk, Magid, Martison, Wencel, Robbins, Rundell
 Waldron, Thompson, Weinberg, Ruback, Rice, Undelund, Robinson, Sage, Moskowitz, Saltzman, Nelson, Trustin
 Saunders, McFayden, Williams, Vingers, Ryan, Warren, Swanson, Raapke, Robinson, Munger, Perry,
 Reynolds, Ravitz



GREENWICH VILLAGERS

Asplund, Goldstein, Badger, Larkin, Peters, Rahrig, Vaid, Miller, Crawford, Gorelick, McCaw
 Columba, Morrill, Hunt, Shively, Edstrand, Wistedt, Shuler, Snyder, Ciculla, Adams, Blair
 Wine, Belman, McAvin, Eisenstatt, Beebe, Gross, Stern, Martin, Padda, Kuklin, Mooberry, Wintroub
 Cherniss, Schiratti, Putt, Forsythe, Ahern, Hoagland, Reynolds, Staats, Fulmer, Ott, Handler



STAMP CLUB

Izenstat, Rosen, Zerbe, Moore, McNichols, McBride, Smith, Estrada
 Glissman, Faier, Venger, Scheuermann, Undeland, Bath, Dienstfrey, Kaplan



CHESS CLUB

Faier, Hoberman, Edgar, Jeremy Goldstein, Lashinsky, Burstein, Moore
 Ben-Ora, Segal, Kulakofsky, Rice, Kadis, Miller, Freeman, Demorest
 Richman, Andre, L. Magee, Jonathan Goldstein, Carstenson, J. Magee, Johnson



MATHEMATICS SOCIETY

Saltzman, I. Veitzer, H. Rechter, Anderson, Howard, Andre, Kalm, Bernstein, Miller, Rice, Shyken,
 L. Veitzer, Green
 Freeman, Garon, Faier, Jacobs, Goldstein, Thomas, Johnson, Zevitz, Wintroub, Colton, Carignan, London
 Lehmer, Ernst, Abrahamson, Solomon, K. Smith, Robinson, Bath, Bush, Richmond, M. Rechter, Polack,
 Humlicek, Plotkin
 Fox, A. Lefitz, Schneiderman, Gendler, Rosen, Feldman, Newman, Stewart, Bercovici, Katzman,
 Wahner, O'Brian



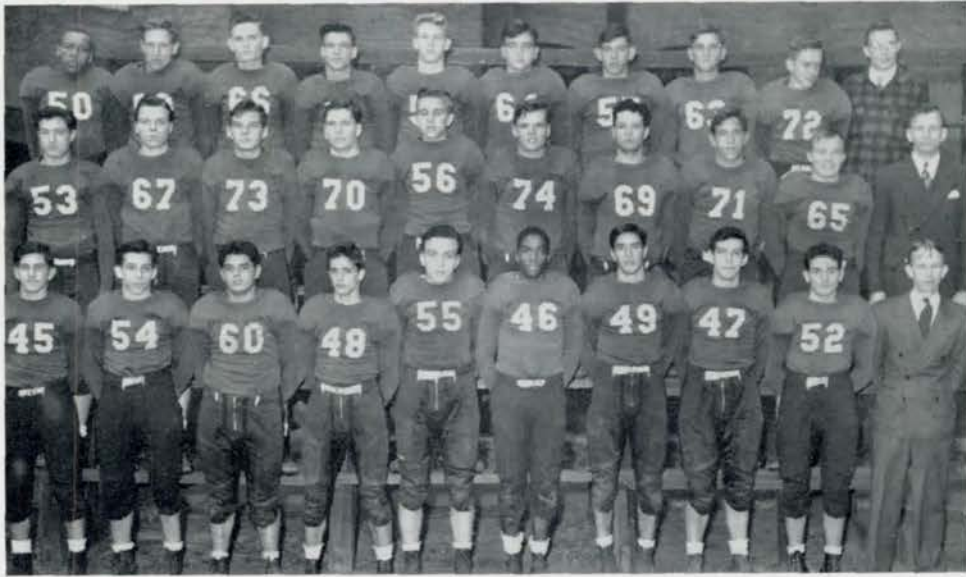
ROLLER SKATING CLUB

Morrill, Moore, Matya, Leibee, Scarpello, L. Consolino, Mockleman, Ludington, Faier, Kuklin, Christiansen, Grant, Carpenter, Colomba, D'Agosta
 Ortman, Peterson, Walters, Johnson, Ryan, Larkin, Orth, Jepsen, Turitz, Filipic, M. Caliendo, Hanson, J. Caliendo, Miloni, Asplund, Sparks
 Lefitz, Nelson, Winberg, Baumgarten, Chudacoff, Faier, J. Kaplan, Cohn, Malm, Hannibal, Thomas, Reynolds, Shyken, Green, Pallat, Sanders
 Huit, Ebright, M. Consolino, Jagar, Claeson, Warner, Asbyll, Dientsfrey, Hager, Kroeger, Praetorius, Fredkin, Greenman, Noodell, Phillips, Irwin
 Chasanov, Vinci, Roxberg, Schuler, McBride, Jack, Hunter, Johnson, Seagren, Pries, R. Caliendo, Cimino, DiGiacomo, H. Kaplan, Krupa, Lashinsky



TUMBLING

Johnson, Boshus, Tesar, Schluter, Henry
 Peterson, Maxwell, Jochun, Fredkin, Epstein



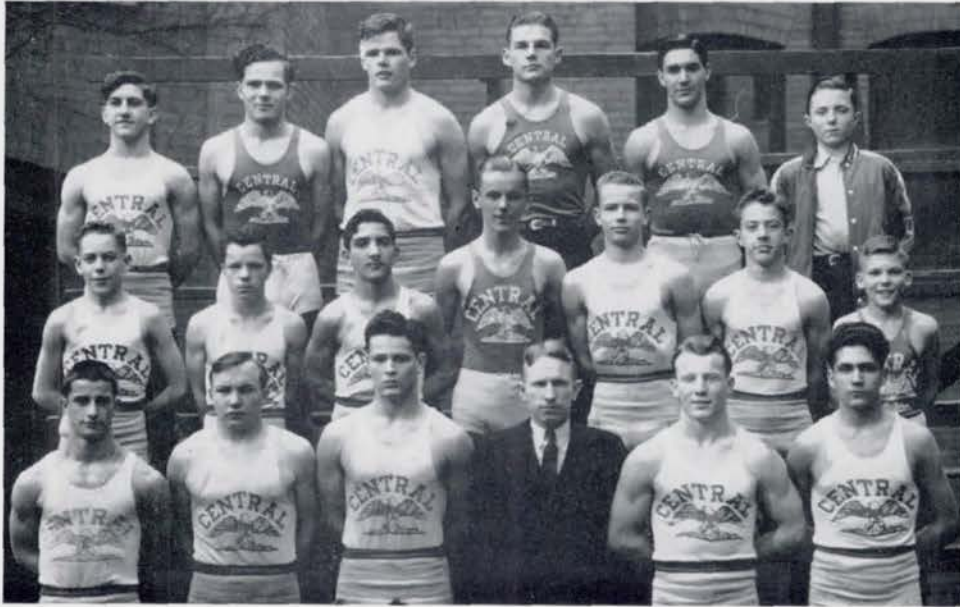
FOOTBALL

Owens, Tetrick, Lacy Rohiff, Hollander, Kremers, Haver, Staggs, Randall, Tunnell
 Fitzsimmons, Thomas, R. Reese, Robb, Tosaw, H. Reese, Beber, Levine, Mackie, Coach Knapple
 Ries, Kais, Mancuso, Moses, Wright, Marshall, Pisasale, Woods, Sirrianni, Coach Ekfelt



BASKETBALL

Vogel, Shea, Hines, Trachtenberg, Mellinger, Ruma, Tunnell
 Peterson, Wright, Bruning, Coach Murphy, Hollander, Reynolds, Rosen



WRESTLING

Ries, Crane, H. Reese, R. Reese, Pisasale, Sullivan
 Fowler, Nyberg, Nigro, Ostronic, Bovee, Bates, Nystrom
 Moses, Mackie, Beber, Coach Ekfelt, Evans, Garrotto

SPORTS REVIEW

Sports, like the weather, are seasonal. The year 1946 was definitely not one of the better seasons for Central High athletics.

The only one of the major Eagle athletic squads to maintain their top spot in the Intercity League was Coach Vernon Ekfelt's wrestling team. The Purple matmen successfully defended city and state championships, and won four individual state titles, Herb Reese, Dave Mackie, Lou Garrotto, and Ed Moses winning the titles.

Coach F. Y. Knapple's football team suffered through one of the worst seasons in Central history, being held without a win until the last game of the season, with Thomas Jefferson. However, Coach Knapple developed enough material to make the Eagle team next fall a contender.

The basketball team, making their debut under new coach Tom Murphy, were able to win but one game, against Elkhorn in their opener. Lack of height and inexperience hurt the team's chances.

Big news of the spring sports season was the resignation of J. G. (Pop) Schmidt, popular science teacher who had been Central's track coach for over a decade. Tom Murphy and Al Hurley, another new coach back from the service, took over the track reins and turned in a respectable showing with the material they had.

The Eagle baseball team developed rapidly, with again the emphasis on building for another year.

The Eagle standards were kept high in the two minor spring sports, tennis and golf. Led by their record-breaking junior linksman, Dick Knight, the Eagle golfers lived up to its reputation of the past while the tennis team also reached new heights.



GOLF AND TENNIS

Fairchild, Young, Ostronic, Campbell, Knight, Mellinger, Yousem, Zlotky, Jauss, Lagman, Ciciulla, Rubenstein, Henderson, Street, Ballinger, Koch, Heiam, Kulakofsky, Rabe, Cooper, E. Steele, Kattlemen, Gall, Augustson, L. Magee, Schroeder, Stern, Katz, Hanwich, Asbyll, Turitz, Randall, K. Steele, Roccaforte, Veitzer, Bowman, Levy, Stryker, Carlson, J. Magee, Sheridan, Oberman, Alberts, Ben Ora



TRACK TEAM

Gobel, Roth, McIntyre, Mettlen, Spelic, Peterson, Wells, Adams, Graves, Riddle, Kelley, Hahn, Sundell, Stoklas, Lewis, Hawthorne, Johnson, B. Rusk, Perry, Gallagher, Hill, Berg, Bragg, T. Scott, Stevenson, Magnuson, Siporin, Fratt, Huffer, Williams, Jackson, Chard, Crum, Wright, Nachman, Mallo, Raupe, B. Beber, Scherer, R. Person, Palmesano, King, Ferro, Alessandro, Miller, Henry, Robin, Fite, Posko, M. Green, Neff, Morris, Coats, Slack, Kremers, Knobelauch, Clow, Reese, R. Green, W. Paulsen, R. Rusk, B. Jacobs, Kay, Chiganos, C. Scott, Filipic, Harper, B. Person, Young, Borowiak, Sgroi, Procopio, Hampton, C. Paulson, G. Jacobs, E. Hunigan, Traub, Buchanan, Hollander, J. Smith, Henry, Shainholtz, Alberts, C. Hunigan, Chedester, Goodlett, Mancuso, Ansel, Niehaus, Merriam, Solomon, Tosaw, Long, Robb, Coach Hurley, Coach Murphy, Bush, C. Beber, Forrest, Owen, Foxall, Ries, K. Smith



BASEBALL

Brown, Zevitz, Handleman, Milder, Haver, Larson, Coach Ekfelt
 Peterson, Shea, Rusk, Kirkpatrick, Ruma, Hughes, Sailors
 Incontro, Wright, Duda, Zajicek, Reynolds, Rosen, Macchietto, F. Mancuso



CHEER LEADERS

Consolino, Beem, Woodard, Lefitz
 Sholkofski, Kahler, Moore, DiGiacomo



O-CLUB

Nigro, Kais, Moses, Macchietto, Fowler, Bates, Crane, Zevitz, Mancuso, Ries
 Nyberg, Evans, Mackie, Handleman, Campbell, Rohlf, H. Reese, Robb, Levine, Thomas
 Wright, Young, Zajicek, Tosaw, Sibbensen, R. Reese, Beber, Tunell, Knight
 Solomon, Howard, Duda, Trachtenberg, Hollander, Mr. Schmidt, Tetrick, Hunigan, Kremers, Rosen



MAKE-UP

Caliendo, Lefkowitz, Pellisero, Garriott, Williams, Maher, Colomba, Bogatz
 Torbert, Carter, Monroe, Cooper, Crouch, Todd, Butera, Winer, Miloni
 Kestermeier, Rice, Policz, Sheley, Hamilton, Hayes, McArdle, Fredkin



G. A. A.

Morrill, Moore, Day, Leabee, L. Consolino, Jones, Scarpello, Lockett, Komicki, Cortese, Wilson, Rank, Hanselmann
 Ruby, Lott, Wilkerson, C. Manley, McLain, Pruitt, Rahn, Jochum, Hannibal, Price, Hanger, Bleicher, C. Layher, Phillips
 Dreier, Oltman, Henderson, Orduna, Baltimore, K. Manley, Scott, J. Stroud, Van Hoosen, Hayes, Walters, Rogers, Siekert, Hinton, Kahler
 Garro, Bean, L. Stroud, M. Consolino, Lewis, Harrington, Koldborg, Hughes, Shaul, Estrada, Maxwell, Campbell, Irwin

GIRLS' SPORTS

Girls' athletics have been continually growing at Central, and during this year they have reached a new high.

Baseball, volleyball, basketball, archery, and badminton are the sports played after school in intramural competition. Tennis is the only activity entered into intercity competition. Last year Polly Robison defeated all opponents to return the singles championship to Central. The doubles team reached final competition but was defeated by North.

Although during the war there was ammunition sufficient only for boys' rifle teams, girls' riflery will again enter city competition.

The annual Play Day sponsored by the Women's Athletic Association of Omaha University encourages interest in girls' athletics. Each year representatives from local high schools are selected for their interest and ability in sports to participate in various contests.

The program of the Girls' Athletic Association is interwoven with girls' sports at Central. Members earn city and state letters for participation in athletics, training rules, and club activities. Picnics, hikes, dances, and skating and swimming parties were among the highlights of this year's calendar.

Officers of the club for the past year were Patty Koldborg, president; Dolores Hughes vice-president; Barbara Leabee, secretary; and Lois Hannibal, treasurer.



JUNIOR BAND

Scott, McNichols, Buster, B. Smith, Townsend, Greenberg, Innis, Kay
 Malec, Moore, Stratton, Kaiman, Richards, Lacina, Edgerton, Glissman, Blatcky
 Glass, DiMauro, Sacca, Long, Osheroff, Belgrade, Larson, Tate, Street
 Berry, Browning, Srb, Liston, Costen, Chasen, Hornstein, Kaplan



GIRLS' BOWLING

Patane, Monroe, Yechout, Slogr, Humlicek, Gans, Price, Siekert, Ciculla, Novatny
 London, Wachter, Koldborg, Hughes, Ryan, Van Hoosen, Olderog, Fox, Paladino, Spelic, Abboud
 Ebright, Morrill, Moore, Cimino, Malm, Krecek, DiGiacomo, Jachun, L. Consolino, Liebee, Cortese



BOYS' BOWLING

Shyken, Nogg, Kulakofsky, Greenberg, Minikus, Anderson, Bath, Traub, P. Thomas, Carlson, Augustson,
 Parker, Stewart
 Saltzman, Beem, Roccaforte, Newman, L. Magee, Miller, Norden, Hoyer, Robb, Niehaus, B. Johnson,
 Swartz, Raznick
 Faier, Berry, K. Smith, Milder, Zajicek, D. Johnson, Art Heiam, Dewell, Trachtenberg, Wellauer,
 Pedersen, G. Wright
 Veitzer, Raduziner, F. Thomas, Hunter, Al Heiam, Srb, Lehr, J. Magee, Browning, Broderdorp, C. Wright,
 Rosen



STAGE CREW

Kais, Chard, Mancuso, Nichols, Crane, Hale, Sgroi, Maguire
 Torpy, Christensen, McClain, Scherer, Rehmeier, Boyd, Kirchofer, Tudor
 Meyer, Harrington, Clow, Mr. Rice, Reese, Reeves, Townsend, Marks







Cover — BENNETT RADUZINER
Senior Plate — MITZI BADGER
Cartoons — JIM PLESKACH
Printing — DOUGLAS PRINTING COMPANY
Engraving — BAKER ENGRAVING COMPANY
Plastic Binding — TRADE RULING COMPANY
(U. S. Patent No. 1970285)