

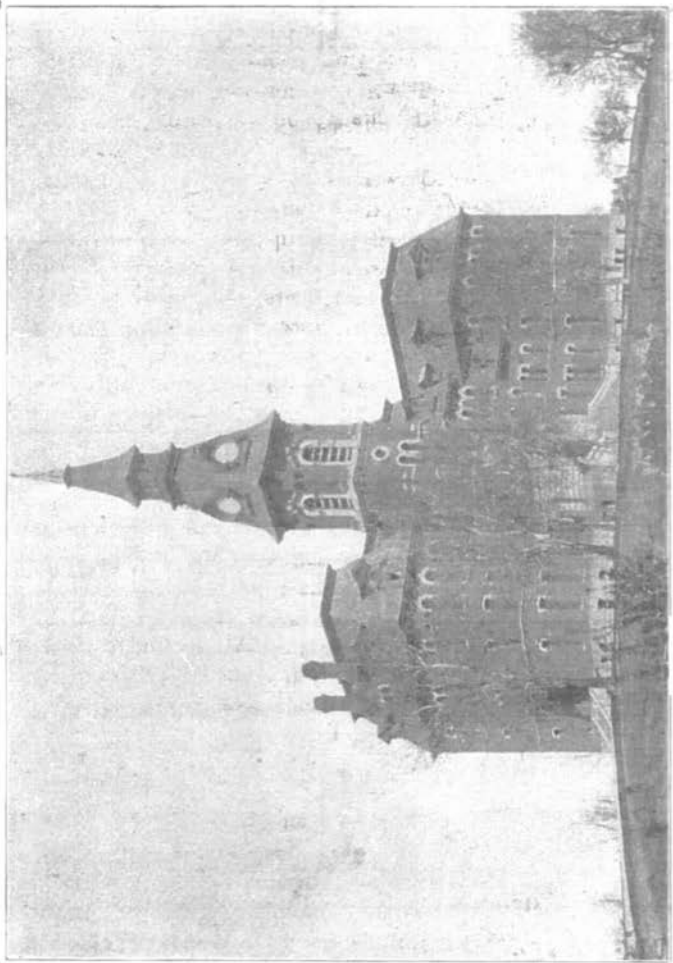
The ...  
Register  
Annual



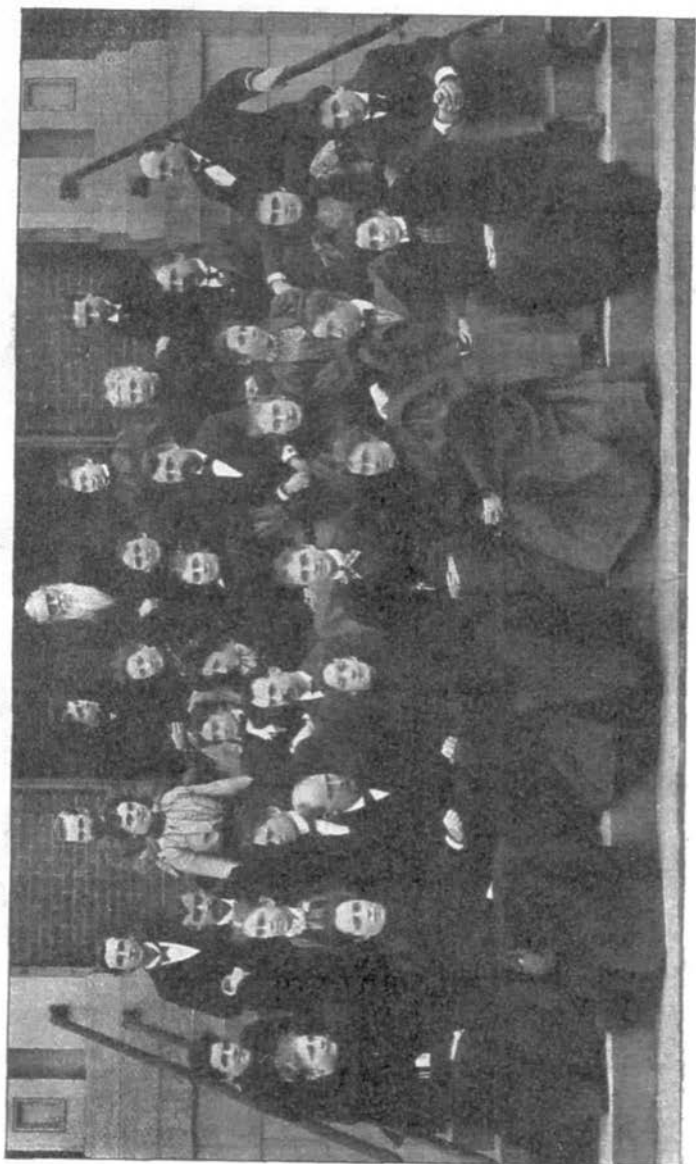
OH S



'97-98



The Omaha High School.

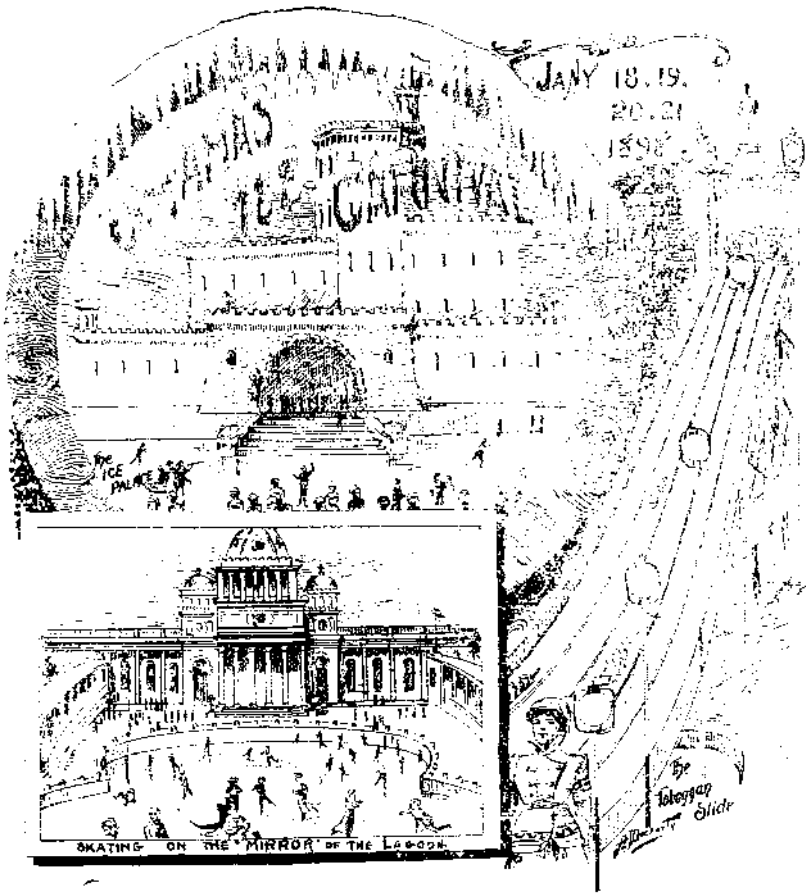


Faculty Omaha High School.

## FACULTY.

---

- Irwen Leviston—Principal.
- Kate A. McHugh—First Assistant Principal—English.
- Earl J. Kelsey—Second Assistant Principal—Latin.
- Anna T. Adams—English.
- S. De Witt Beals—Librarian—Astronomy.
- Nathan Bernstein—Science.
- William E. Brook—Mathematics.
- Carrie O. Brown—Mathematics.
- May L. Copeland—Latin.
- Mrs. Elizabeth Craven—Latin.
- C. Belle Dinturff—Science.
- Bertha G. Green—Study Room and Commercial Arithmetic.
- Decia A. Johnston—Physiology.
- M. Alice Landis—German.
- William M. McClintock—Physics.
- Johanna Vom Mansfelde—Latin and English.
- Rowena Morse—Science.
- Antoinette Ogden—French.
- Maria Okey—English.
- Susan Paxson—German.
- Laura Pfeiffer—English.
- Mary E. Quackenbush—Mathematics.
- Mrs. Elizabeth Roudebush—English and History.
- Lucy J. Roys—Mathematics and History.
- Villa B. Shippey—History and Mathematics.
- Bessie J. Snyder—Greek and Latin.
- Jessie Towne—English and Latin.
- Georgia Valentine—History and Mathematics.
- Suzanne A. Walker—French and German.
- Janet M. Wallace—English.
- Myrtle I. Wheeler—History and English.
- John E. Wigman—Manual Training.
- Joseph F. Woolery—Mathematics.
- H. A. Senter—Chemistry.
- J. Irving Read—Latin and English.
- Ethel Evans—Drawing.
- George R. Rathbun—Commercial Studies.
- Lieutenant E. O. C. Ord—Military Instructor.



The carnival proper will be held on January 18, 19, 20 and 21, 1898; and the following program has been partly decided upon, commencing at 8:30 each evening:

January 18—The coronation of Queen Polaris, conferring the order of knighthood upon the 250 maids of honor; the delivery of the keys of the city to her imperial majesty, Polaris; the reception by the governors of the transmississippi states; formal installation of the queen in the Palace of Ice; brilliant electrical illumination of the palace and lagoon; bal masque and imperial grand march on the "Mirror."

January 19—The appearance of "Pele, the Goddess of Fire;" the demand of surrender and the refusal; the marshalling of the forces; grand parade of the uniformed toboggan clubs around the lagoon; the defiance, the attack, storming and repulse; armistice declared; costume cotillion on the "Mirror."

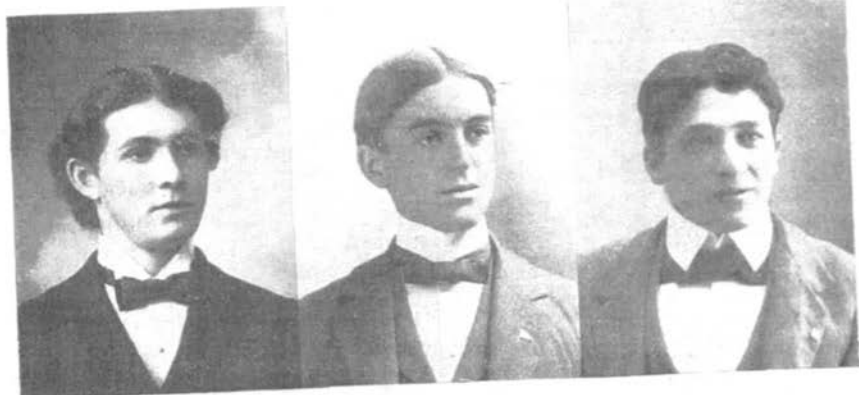
January 20—"Saturnalia;" magnificent electric effects and novel illumination of the palace; artificial Aurora Borealis; prize parade enmasque; the reception by Pele from her throne of fire; bal masque on skates.

January 21—The storming and capture of the palace; abdication of Queen Polaris; the surrender; the destruction of the palace by fire; the triumph of Pele; parole of prisoners.

The fireworks will be under the immediate direction of Norris & Love, the managers of the carnival, and many new effects will be produced. The site where the carnival is to be held is an ideal one. The handsome lagoon with the magnificent exposition buildings which will face upon its broad banks; the government building at the west end of the mirror with its semi-circle colonades; the magnificent palace of ice on the island opposite the administration arch and the arch of states; the ornate toboggan slide with its swiftly flying flashes of color, will together be like a vision of fairy land.

The ice palace will cover the entire island and will be 110 feet in height; will be brilliantly illuminated. The entire lagoon will be illuminated by electricity in carnival colors, blue and gold. The toboggan slide will accommodate 3,000 people per hour and give a ride of 1,350 feet, a little over a quarter of a mile.

## ATHLETICS.



LESTER C. HUTCHINSON,  
Football Captain.

FRANK B. KNIGHT,  
Athletic Manager.

NATHAN BERNSTEIN,  
Football Coach.

It is now a recognized fact, that to make a good student, a well-balanced physical organization is necessary. And as this becomes more generally known, more and more attention is given to the development of athletics in our schools and colleges. Nor is there any cause for the contention that time given in schools to legitimate sport, tends to produce athletes instead of students.

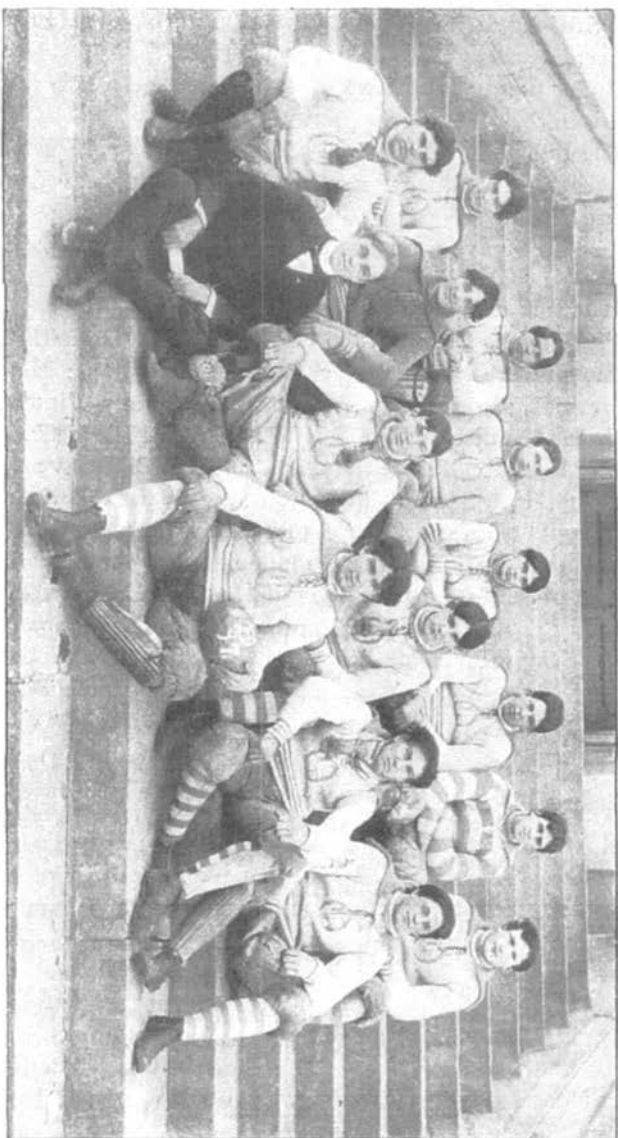
In the front rank of the world's busy thinkers, the athlete is found; nor does he hesitate to tell us that his splendid physique helps him in no small degree to hold his own in "the struggle for existence."

While "mens sana in sano corpore," may be trite it is never untimely. That it means success to those who adopt it for a text has been demonstrated to the satisfaction of all, by the best friend boys ever had, Dr. Arnold of Rugby.

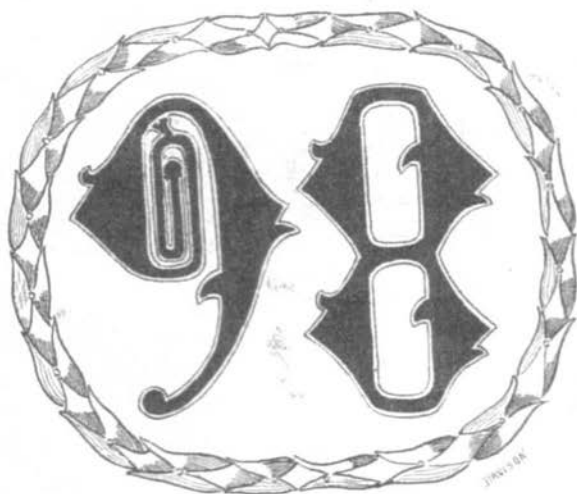
In the Omaha High School the growth of athletics has been stady, if slow. The importance of this branch in developing good citizens has always been recognized.

In this connection it might be well to speak of a custom prevalent in some of our colleges and worthy of adoption. The wearing of the O should be limited to those who have represented the Omaha High School on the athletic field.

In its initial number the Annual wishes the greatest success to the O. H. S. A. A., that its achievements may always reflect luster on the H. S., and that it may endure as long as does the school.



High School Football Team—1897/8.



Class Officers.

PRESIDENT—GERALD WHARTON.  
VICE-PRESIDENT—LOUISE MCNAIR.  
SECRETARY—GERTRUDE MACOMBER.  
TREASURER—EDITH BURGESS.  
Class Colors—Garnet and White.



## Class of '98.

Allen, I. May  
Anderson, Margery  
Aust, Ada  
Austin, Mary  
Baker, Mary  
Barnhardt, Iona  
Barrett, Bessie  
Barrett, Prudence  
Bechel, Lucy H  
Berka, Bertha  
Blake, Annette  
Brandeis, Helen  
Burgess, Edith I  
Burgstrom, Aurora  
Case, Bertha  
Chambers, Bessie  
Covell, Anna  
Craig, Nellie  
Daniel, Iona  
DeBolt, Martha  
Daniel, Louella  
Dorsey, Nancy  
Drage, Elizabeth S.  
Ellett, Georgia  
Ellsworth, Mary  
Emerson, Agnes W  
Everingham, Winifred  
Goetz, Jessie  
Griffith, Vivian  
Gyantner, Camilla  
Guntner, Hattie  
Haislip, Georgia  
Hardin, Hallie  
Hoffmayer, Julia  
Homelius, Martha  
Horn, Nellie

Hunter, Lara  
Irey, Edna  
Ittner, May  
Jackson, Edith  
Jaynes, Herberta  
Jensen Rhena  
Johnson, Mary W  
Kerr, Lizzie  
Kessler, Celia R  
Killian, Victoria  
Lieber, Barbara  
Mack, Lucy  
McMillan, Elinor  
McNair, Louise  
Macomber, Gertrude  
Macomber, Maude  
Nathis, Edith  
Maxwell, Elizabeth  
Murphy, Blanche  
Nelson, Mary  
Parker, Emma  
Porter, Grace  
Patterson, Oma  
Potter, Faith  
Randall, Florence  
Roys, Dora  
Reed, Marion  
Rasmussen, Mamie  
Sandberg, Edith L  
Smith, Millie  
Snell, Lillian  
Spencer, Edith  
Tompsett, Aggie  
Urlan, Claudia  
VanCamp, Jessie  
Volicka, Mamie B

Wilhelmy, Winifred  
Young, Dorothy A  
Anderson, Anthon  
Anderson, James  
Chisam, Arthur  
Clarke, Louis  
Coffman, Thomas  
Cortelyou, Spencer  
Cnscaiden, Frederic  
Duncan, Henry  
Doane, George W  
Everts, Charles P  
Fonda, Wm. B  
Glaun, Milton  
Groh, Abe  
Helquest, Oscar  
Johnson, Robert  
Johnston, Wylie  
Koetter, Max  
Leisge, Charles E  
Lynn, Wallace  
Manchester, Frank  
Mathews, Alfred P  
Nesladek, Joseph  
Potter, Aubrey  
Robinson, R. L.  
Romigh, Victor  
Roos, Elmer  
Rosicky, John  
Soderholm, Edward  
Swenson, John S  
Swartzlander, Joseph  
Wharton, Gerald

# J. A. KERVAN

## MERCHANT TAILOR

A Choice Line of Foreign  
and Domestic Woolens to  
Select From ..

422 South 15th Street.

Karbach Hotel.

## Class of '99.

Abrams, Bessie  
 Alexander, Sadie  
 Askwith, Ellen  
 Bedford, Stella  
 Bennett, Pearl G  
 Blakeslee, Adelaide  
 Bous, Alice  
 Burns, Ethel  
 Campbell, Jean  
 Campbell, Zola  
 Carey, Mabel  
 Cook, Florence  
 Cory, Annetta  
 Craig, Blanche  
 Craig, Katherine  
 Crandell, Grace  
 Craven, Edith  
 Crumpacker, Martha  
 Dahlstrom, Edith  
 Doll, Mabel  
 Eller, Leone  
 Eiser, Albertha  
 Emerson, A. Louise  
 Forsyth, Pannie  
 Frederick, Olive  
 Gieselman, Amelia  
 Goldstein, Anna  
 Grau, Sophia K  
 Gregg, Eleanor  
 Green, Emma  
 Hamilton, Irene  
 Hancock, Grace  
 Hart, Bessie  
 Hanley, Sarah  
 Honninger, Charlotte  
 Higby, Helen  
 Higgins, Mabel  
 Hopper, Evelyn B  
 Jensen, Mary  
 Jeter, Elizabeth  
 Kassal, Fannie  
 Keith, Julia B  
 Keniston, Fannie  
 King, Fannie  
 Kruse, Annie  
 Logassa, Jennie  
 Mackin, Clare  
 Mark, Leah  
 Mercer, Carolyn  
 Merrill, Fannie  
 Miller, Blanche

Mitchell, Harriet  
 Montgomery, Elsie  
 Morrison, Ethel  
 Morsman, Everette  
 Nelson, Carrie  
 Nestor, Emma  
 Neville, Ala  
 Nielsen, Nellie  
 Olson, Judith  
 Olver, Sadie  
 Patterson, Hallie  
 Paulson, Corinne  
 Pardon, Fay C  
 Pierson, Mabel  
 Redman, Bessie  
 Riley, Pearl L  
 Rosewater, Blanche  
 Rothery, May  
 Roys, Cassie  
 Ryan, Adele  
 Salisbury, Janie C  
 Seaman, May  
 Sley, Mabel  
 Smith, Charlotta  
 Sison, Hildreth  
 Smith, Leonora  
 Smith, May  
 Smith, Phoebe  
 Staebell, Grace  
 Stephen, Mabel  
 Sunder, Maud  
 Talbot, Nellie  
 Tierney, Terra  
 Towar, Lila  
 Towar, Eleanor  
 Trevett, Nona  
 VanKirk, Grace  
 Walker, Jessie  
 Waterman, Carrie  
 Waterman, May  
 Weidensall, Clara  
 Wight, Agnes  
 Will, Barbara  
 Winspear, Alice J  
 Wrenn, Ethel  
 Wilcox, Ethyl  
 Youngquist, Alma  
 Allen, Fred L  
 Allen, Robert  
 Alvison, Otis  
 Anderson, Axel

Barrows, Willard  
 Blixt, Walter  
 Buckley, Newton  
 Burgess, Edward  
 Coburn, John C  
 Coy, Clyde  
 Davison, Preston  
 DeLong, Claude  
 Eller, Harley  
 Fairchild, Wm  
 Finkenstein, Morris  
 Hampton, Charles  
 Hancock, Albert C  
 Harris, Russel  
 Heinrich, Carl  
 Hess, Fred E  
 Hobart, Harvey R  
 Holmes, Chandler  
 Homan, Harold  
 Hughes, Frank J  
 Humphrey, George E  
 Impey, Chester C  
 Jakl, Vincent E  
 Johnson, Donald  
 Johnson, Chas  
 Johnson, Howard  
 Kassal, Nathan  
 Kerrigan, John  
 Knight, Frank B  
 Kopald, Wm  
 Libby, Ralph L  
 Magney, Reno  
 Mason, Claude W  
 Matthews, F. A  
 Moore, Cory  
 Moriarity, John  
 Post, Nathan W  
 Powell, Doane  
 Rice, John  
 Sadler, C. O.  
 Shields, Robert  
 Smith, Sherman  
 Spaffard, Noyes  
 Sugarman, Martin  
 Sweeley, Fred  
 Swoboda, Adolph  
 Underwood, Lawrence  
 Wharton, Glenn  
 Wherry, Wm  
 Wilcox, Reuben

## Class of 1900.

Abbot, Orie N	Carson, Martha J	Evans, Emily	Holliday, Anna
Adair, Pauline	Carter, Cora	Ewers, Edith	Houston, Jessamine
Allen, Sara	Cholman, Jenny	Fearon, Florence	Huestis, Genie
Allen, Vera	Church, Bertha	Fearon, Josie	Hughes, Agnes
Althen, Cora	Carlson, Ada	Felter, Margaret	Hull, Mabel L
Anderson, Edith	Carlson, Esther	Feld, Bessie	Hull, Rosalind
Anderson, Jane H	Carr, Myrtle	Ford, Ella	Isakason, Edith
Andress, Bessie	Clark, Bertha	Finney, Clara	Jensen, Annie P
Anthes, Ellen	Clark, Mildred F	Flanagan, Stella	Johnson, Emma
Arriens, Hattie	Clarke, Hortense	Fraha, Josephine	Johnson, Jessie
Armstrong, Corinne	Close, Ethel	Frank, Golda	Johnston, Mudge
Austin, Birdella	Coleman, Edith	Frederickson, Dorothy	Jones, Helen
Back, Nellie	Cooper, Mary	Frenzer, Lucy	Keller, Helen
Bailey, Gertrude	Crosby, Katie	Fries, Henrietta	Kent, Sadie
Barber, Carrie	Cultra, Ruth	Gallagher, Ellen	Keys, Maude
Barker, Ethel	Curry, Anita	Garrett, Katie	King, Elizabeth
Bell, Eva M	Curry, Esther	Gavin, Margaret	Kinkead, Elizabeth
Beman, Ester	Curtis, Olga C	Goldsmith, Carrie	Kinkead, Nina
Bennett, June	David, Emma	Green, Stella	Kinsman, Edith
Benzon, Edith M	Dietrick, Mary	Griffith, Mary	Klopp, Bertha
Bernhard, Otilia	Dumont, Edith M	Groves, Josie	Ketchum, Dorothy
Berry, Bessie	Duncan, Claudine	Gwinn, Lulu	Knapp, Belle
Blairvall, Nora	Dungan, Clara	Haley, May	Kopp, Lucy
Bliss, Maybell	Edholm, May	Haislip, Bessie L	Kracht, Carrie
Brooks, Maude	Egbert, Luthia	Hart, Ada	Kraecht, Fannie
Buchanan, Alice	Edwards, Helen	Hedenhahl, Leonora	Lancaster, Nettie
Burr, Edith	Eisele, Minnie	Herbert, Agnes	Lane, Hester
Carberry, Hattie	Ellsworth, Olive	Hervey, Clara	Lang, Julia
Carey, Gertrude	Elsasser, Sophie M	Hironymous, Jenny	Lansing, Jessie
Carleton, Nomic	Engler, Clara	Hollenberg, Lena	Lawrence, Jessie

# Skates

“Barney & Berry”  
 “The Klipper Klub”  
 “Winslow’s”

We show a large and complete line of these Celebrated Skates  
 of the LATEST IMPROVED 1898 PATTERNS.  
Boys' Skates, 30c up. Girl's Skates 60c up.

All others in proportion. You make a mistake if you do not  
 see us before buying.

Milton Rogers & Sons.,  
 14th and Farnam Sts.

## Class of 1900—Continued.

Lawton, Rachel	Nelson, Mattie	Rood, Emma	Taylor, Hester
Lehmann, Augusta	Newlean, Janette	Rose, Josephine	Taylor, Mance
Levoy, Effie	Nichols, Grace	Rothschild, Miriam	Taylor, Pearl
Lewis, Florence	Nollman, Olga	Rubenstein, Hattie	Thomas, Edith M
Loftus, Frances	Oaander, Nellie	Rundquist, Vauja	Tillotson, Lola
Lorenzon, Emma	Overall, Enlalie	St John, Grace	Tindell, Agnes H
Lownsbury, Edith	Packard, Mabel	Salisbury, Mercy	Tukey, Louise
Lund, Agnes	Palmer, Ethel	Saling, Della	Utt, Olive
Lynch, Helen	Pampel, Bertha	Sandberg, Bessie	Vancamp, Bertha
McArdle, Bridgie	Parker, Cecil	Sanderson, Edna	Walker, Grace
McConnell, Elizabeth	Parmelee, Florence	Schmidt, Helene A	Walker, S. Frances
McEachron, Margaret	Parrell, Kate	Schmidt, Ursula	Wallace, Nettie
McElroy, Agnes	Partridge, Ethel	Schoonstadt, Bertha	Wear, Nellie
McGavock, Lila	Patterson, Georgina	Shackelford, Mary	Weller, Alice E
McKenna, Elsie	Paulson, Edith	Shearer, Birdella	Weller, Agnes
McLaughlin, Laura	Paulsen, Kirsten	Shorroek, Katherine	Welshans, Grace
Martin, Anna	Peterson, Elien	Shellington, Ella	Wentworth, Lizzie
Matthews, Marie	Philippi, Bertha	Shortliff, Elizabeth	Whitlock, Ethel
Maynard, May	Pixley, Blanche	Smith, Elizabeth	Wigington, Estella
Meyer, Otilie	Pixley, Ida	Smith, Emma	Wigington, Jennie
Miller, Janette E	Poff, Bessie E	Smith, Vinnie	Wiley, Ruth
Moneak, Bertha	Purvis, Caroline	Southard, Eleanor	Will, Bertha
Miner, Viola A	Purvis, Frances	Spethmann, Alma	Williams, Beth
Minogue, Ella	Randolph, Nada	Spooner, Fannie	Williams, Isabel
Morrow, Blanche	Rector, Ethel	Staffard, Josephine	Wilson, Ruth
Munsell, Rogene	Redfield, Sue	Staffard, Marie	Withrow, Jessie
Murphy, Stella	Redington, Helen	Stein, May	Wood, Mary
Murtagh, Marie	Rees, Henrietta	Stevens, Edith	Worley, Lucy
Nandain, May	Rehfeld, Harriet	Straight, Ethel	Yoder, Elizabeth
Neff, Rosa	Renaul, Mabel	Sutter, Anna	Yost, Ethel
Nelson, Lottie	Robison, Lillian	Swanson, Pearl	Young, Jessie

# THOMPSON BELDEN & CO.,

S. W. Corner 16th and Douglas Sts.

## For Sensible, Substantial and Useful HOLIDAY PRESENTS

Do not fail to investigate a thoroughly  
Well assorted stock of

### DRY GOODS

.....Such as we are showing

Class of 1900—Continued.

Allen, John C  
 Baird, Edwin  
 Bassett, Henry  
 Bechel, Wm  
 Bena, Wm  
 Benson, Edward  
 Bevins, Russel  
 Bernstein, Louis  
 Blythin, Edward E  
 Boyer, Edward  
 Brown, Andrew  
 Brunker, Lawrence  
 Brown, Frank A  
 Bryant, Frank D  
 Burnett, Harry A  
 Burns, Robert  
 Byrne, John  
 Case, Mont  
 Candell, Fred  
 Canfield, Geo. H  
 Chisam, Ray  
 Christensen, Andrew  
 Clacey, Hugh  
 Cole, Herbert

Comstock, Royal  
 Clark, Geo. B  
 Conrad, Frank  
 Cooper, Walter  
 Cortelyou, Louis  
 Dallas, Arthur  
 David, August  
 Dawson, Dale  
 DeLong, Ralph  
 Denise, Daniel  
 Dickenson, Al  
 Dirkson, Harry W  
 Doherty, Windsor  
 Drishaus, Lester  
 Ehlers, Bernard  
 Flanagan, George  
 Foley, Thomas  
 Foster, Robert  
 Frank, Morton  
 Freeman, Arthur L  
 Frank, Elmer  
 Gallagher, Louis  
 Godfrey, James  
 Hawley, Joseph H

Hayes, John  
 Hanchett, Reid  
 Hardy, Gay  
 Harris, Russel  
 Hayes, Fred  
 Hervey, Earl C  
 Higgins, Harry  
 Hill, Walter  
 Hoerner, George  
 Hosier, Will P  
 Houck, Miles P  
 Hultman, Gus  
 Hutchinson, Arthur  
 Hutchinson, Lester  
 Ingran, Edgar  
 Jay, Joseph  
 Jessen, Arthur  
 Johnson, Fred M  
 Kinkade, Roy  
 Kirshbaum, Lester  
 Knodle, Ray A  
 Kopald, W R  
 Kraneht, Roy  
 Kreidler, Ralph

Lampe, Willard  
 Kobold, Sig  
 Linderger, Carl  
 Magiue, George  
 Mariotte, Ralph  
 Maynard, Wilbur L  
 Michal, Edward  
 Miller, Julian  
 Moore, Gilbert  
 Moore, Will H  
 Morse, Robt L  
 Morseman, Robert  
 Murphy, Hugh  
 Neal, Harold W  
 Nelson, Henry  
 Newell, Harold C  
 Newman, Julius  
 Nickell, Thomas  
 Nielsen, Louis  
 Norton, Ernest  
 Parmer, Devore  
 Parrott, Clarence  
 Pegau, Edward  
 Peterson, Frank A



MRS. J. BENSON,

210-12 South 16th Street.

**W**E are showing the handsomest line of Christmas Goods ever brought to Omaha.

Besides Staple Goods, we have.....

Novelties Never Made Until This Season.

Presents for Ladies, Gentlemen, and Children.

A Large Line of Sterling Silver Novelties.

Kuhn's Glycerole of Roses is the Best Article Made for Chapped Hands.

25c a Bottle— at Kuhn's Drug Store.

## Class of 1900—Continued.

Petrie, Artemus	Romig, Clarence	Smith, Otto	Thomas, Guy
Pierce, Wm. Dwight	Rooney, Edward	Smith, Arthur	Thompson, Charles
Pierce, Percy	Schlaifer, Osher	Smith, Sidney	Tindell, Wm
Potter, Clarence S	Seaton, George	Spalding, Roy S	Valentine, Edward
Prichard, Chas. B	Shank, Adolphus	Stine, James H	Waller, Fred
Randall, Ebert	Shearer, Fred R	Steff, Wm	Wedell, Charles
Raymond, Earl	Shearer, Homer	Stokes, G. Percy	West, Elmer
Raymond, Glenn	Shearer, Will	Sutherland, Judson	West, George
Rees, Samuel	Shirley, Robert	Taylor, Alfred	Wheeler, Albert
Richards, Guy M	Sivers, Henry	Taylor, J. Burr	Whitty, Lawrence
Redell, Ray	Simpson, Frost	Teal, Stebbins	Withers, Roscoe
Roberts, Walter	Skinner, Joseph	Telloson, George	Wolters, George
Robinson, Paul	Slater, Edward M	Tempieton, Charles	Young, Harry
Robinson, Theodore	Slater, Irving	Thirkles, Wm	



# This Great Christmas Store



From now on until the 24th of December will be the Mecca for Christmas shoppers. We have gathered such lots of beautiful and useful and interesting things as were never before gathered in Omaha.

## THE TOY SHOW . . . .

Is enormous and comprises all the new novelties and the dear old favorites of our far back days.

## THE DOLL POPULATION . . . .

Is here in truly metropolitan style, from the wee little one to her more pretentious and full grown sister in silk and satin.

## THE 99c STORE, 1319 Farnam St.

Have you had any of Balduff's Italian  
Chocolates. Be sure and get some.

## Morand's Dancing School

1510 Harney Street, Omaha

Open from September to May.

Children Wednesday, 4:15 p. m.; Saturday, 10 a. am., 2 and 4:15 p. m.

Adults Tuesdays and Fridays, 8 p. m.

Please call for further particulars.

## Class of 1901.

Anderson, Charles  
 Askwith, Harry  
 Arnold, Marion  
 Anderson, Robert  
 Arant, Horace  
 Axford, Charles  
 Bandhauer, Emil F  
 Baker, Guy  
 Barker, George  
 Barnard, Lewis  
 Bay, Herbert  
 Barnum, Fred  
 Bedford, Jeff  
 Blake, Harold  
 Boekoff, John  
 Bolter, Austin  
 Borghuna, Francis  
 Bowie, Alfred  
 Boyer, Arthur  
 Boyle, Robert  
 Bradford, Frank  
 Brandt, Willie  
 Brice, James  
 Brown, Ed

Buck, Carl S  
 Burns, Joseph  
 Burr, Hoyt  
 Campbell, Leslie  
 Cannon, Charles  
 Carey, Thomas  
 Carey, Wm. L.  
 Cassiday, Carl  
 Coakley, Orlo  
 Cole, Charles  
 Conrad, Emil  
 Cook, James  
 Cooper, Clyde  
 Corey, Lorenzo  
 Cramer, Dwight  
 Craron, John  
 Cronk, Howard  
 Cronk, Walter  
 Crosby, Paul  
 Cultra, James  
 Davies, R. L.  
 DeBolt, Victor  
 Denman, T. N.  
 Ducl, Clarence

Duel, Eldridge  
 Devalon, Lewis  
 Detrich, Homer  
 Driscoll, Frank  
 Dickson, Charles E  
 Dillenbeck, Salathiel  
 Dumont, Raymond  
 Doherty, Selwyn  
 Donley, James  
 Donnelly, James  
 Dunigan, Benj. H.  
 Edmiston, Wm. S.  
 Edholm, Wm.  
 Eller, Wayne  
 Elsasser, Heuning  
 Evans, Raiph  
 Elsasser, Peter  
 Esser, Peter  
 Empey, Ernest  
 Enewold, Henry  
 Fair, Campbell  
 Fawknor, Alfred  
 Fitch, David  
 Foster, Waldo

Foster, Harold  
 Foster, Walter  
 Franklin, Henry  
 Fried, Theodore  
 Fyock, Ed.  
 Galbraith, Willie  
 Gardner, Elmer S.  
 Glandt, Claud  
 Goodrich, Earl  
 Goodrich, Wesley  
 Gordy, Charles  
 Gorman, Frank  
 Gould, Ray  
 Graff, George  
 Greenfield, Harry  
 Gross, Arthur  
 Grover, Ernest  
 Gsantner, Otto  
 Haglund, Axel  
 Hair, Raymond  
 Hake, Lee  
 Hall, Donald  
 Hamblet, Fred  
 Hamilton, Allan

# Courtney & Co.'s

Good Things for the Christmas Table

PLUM PUDDING BRANDY SAUCE.

CALF'S FOOT JELLY WITH SHERRY.

FRENCH CAPERS AND MUSHROOMS.

ORANGE MARMALADE.

"CADEAUS" BONELESS SARDINES.

"PIN MONEY" PICKLES.

ROE'S OLIVE OIL.

FRENCH TRUFFLES.

SPANISH OLIVES AND "SINGUALAS."

FANCY CHEESE.

DEHESA CLUSTER RASINS.

JORDAN ALMONDS.

SPANISH WALNUTS.

CHINESE PRESERVED GINGER.

Headquarters for Fancy Groceries.

Telephones—Market, 515. Grocery, 647

Courtney & Co., 25th and Davenport Sts.

J. Carroll Whinnery

DENTIST

Brown Block,  
 Cor. 16th and Douglas.

Phone 484.

Payne's

Barber Shop

1217 Farnam Street.

## Class of 1901—Continued.

- |   |   |   |   |
|---|---|---|---|
| <p>Thurston, Fred<br/>         Tierney, Byron<br/>         Tillotson, Claude<br/>         Tindell, Alfred<br/>         Tompsett, Ralph<br/>         Troxell, White<br/>         Tracy, Eugene<br/>         Trostler, Edward<br/>         Tyrrell, Harry<br/>         Ulmer, Harry<br/>         Walker, Louis<br/>         Wallace, Edward<br/>         Wallace, Lloyd<br/>         Washburn, Chester<br/>         Wight, Thomas<br/>         Wiley, Robert<br/>         Wilhelm, Arthur<br/>         Williams, Harold<br/>         Willis, Ben G<br/>         Willis, Yates<br/>         Woodard, Guy<br/>         Yager, Will<br/>         Yirack, Julius<br/>         Zander, Jerome<br/>         Allen, Jennie<br/>         Allison, Mabel<br/>         Andersson, Elen<br/>         Ashcraft, Myrtle<br/>         Bailey, Florence<br/>         Baker, Anna<br/>         Baldwin, Isabel<br/>         Balinger, Gertrude<br/>         Barrows, Hilda<br/>         Bailey, Cora<br/>         Bawman, Katie<br/>         Barton, Hallie<br/>         Bartos, Anna<br/>         Beard, Sarah</p> | <p>Bedford, Elizabeth<br/>         Bell, Frances<br/>         Benedict, Lydia<br/>         Bennett, Mabel<br/>         Berger, Grace<br/>         Bernstein, Libbie<br/>         Blake, Grace<br/>         Blanchard, Jennie<br/>         Blostick, Lizzie<br/>         Bockhoff, Margaret<br/>         Bolden, Blanche<br/>         Bones, Gladys<br/>         Booker, Zoe<br/>         Boyd, Lillian<br/>         Boyd, Lula P<br/>         Brady, Elizabeth<br/>         Bradley, Luella<br/>         Brady, Susan F<br/>         Buchanan, Maud<br/>         Buckley, Maud<br/>         Buckingham, Darlene<br/>         Burnham, Olive<br/>         Burr, Amy<br/>         Burstall, Frances<br/>         Calmes, Georgia<br/>         Cameron, Lena<br/>         Campbell, Nellie<br/>         Canan, Ada<br/>         Canan, Jennie<br/>         Carey, Nellie<br/>         Carpenter, Linnie<br/>         Carr, Daisy G<br/>         Carr, Rosa<br/>         Carson, Eugenia<br/>         Carter, Anna<br/>         Chaikin, Dora<br/>         Chambers, Florence<br/>         Chase, Blanche</p> | <p>Cheshro, Myrtle<br/>         Christian, Marion<br/>         Christian, Josephine<br/>         Christianson, Hattie<br/>         Cole, Pearl<br/>         Coleman, Nellie<br/>         Comstock, Lorraine<br/>         Connelly, Ida W<br/>         Conklin, Grace<br/>         Cook, Blanche<br/>         Cooper, Amy<br/>         Corbitt, Elsie<br/>         Crawford, Alice<br/>         Crawford, Mary<br/>         Cullen, Julia<br/>         Cunningham, Nellie<br/>         Currier, Mabel<br/>         Cuyler, May<br/>         Curtis, Margaret<br/>         Curtis, Lucile<br/>         Damon, Corris<br/>         Davis, Grace<br/>         Davis, Ouida<br/>         Day, Elsie<br/>         Dean, Marie<br/>         DeLaVega, Emma<br/>         Deverell, Florence<br/>         Devitt, Bessie<br/>         Dickerson, Elizabeth<br/>         Dickinson, Lillian<br/>         Dinney, Mary<br/>         Dodge, Hattie<br/>         Dodsworth, Mabel<br/>         Doherty, Mary<br/>         Dolan, Ollie<br/>         Donahue, Blanche<br/>         Dorsey, Catherine<br/>         Dunn, Sadie</p> | <p>Dunn, Stella<br/>         Durr, Ella<br/>         Dyball, Bona<br/>         Edwards, Lula<br/>         Eller, Frances<br/>         Elmiger, Clara<br/>         Emslie, Grace<br/>         Evans, Beulah<br/>         Fanning, Margaret<br/>         Fawcner, Edith<br/>         Feeny, Dora<br/>         Ferguson, Alice S<br/>         Finley, Gertrude<br/>         Finney, Nellie<br/>         Fisher, Mabel<br/>         Fitchett, Georgia<br/>         Franklin, Margueriette<br/>         Frank, Mary<br/>         Fries, Mabel<br/>         Frost, Etta<br/>         Garner, Grace<br/>         Garner, Helen<br/>         Garner, Jessie<br/>         Gille, Rose<br/>         Goettsche, Minnie<br/>         Goetz, Elsie<br/>         Goff, Lucy<br/>         Gonden, Cathryn<br/>         Graham, Ada<br/>         Graham, Leola C<br/>         Granby, Cora<br/>         Gryn, Martha<br/>         Hainsworth, Esther<br/>         Hall, Lillian<br/>         Hammond, Ruth<br/>         Hanchett, Hope<br/>         Hand, Mary E<br/>         Hanley, May C</p> |
|---|---|---|---|

## Attention, Business Men!!!

If You Have Not Tried the One Minute Restaurant, you have missed the Best Meal in the City.

JNO. HALPINE, and JAS. H. HALPINE,  
 1511 Farnam Street, Omaha. Proprietors

# S. B. Stewart, Florist and Seedsman

Fresh Flowers Always on Hand

Telephone 977

119 North 16th Street



## Class of 1901—Continued.

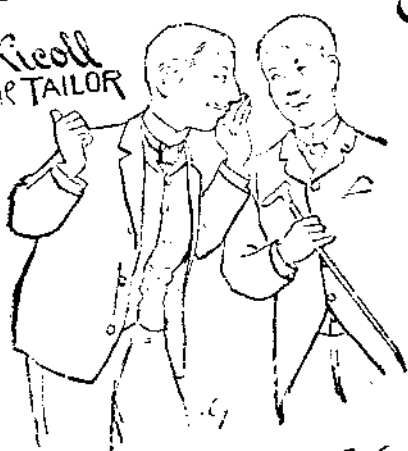
•Hauling, Benj.  
 •Hardy, Arthur  
 Hargrave, Walter  
 •Heaford, Edwin  
 •Harrison, Willie  
 Hayes, Thomas  
 Helmer, Paul  
 Hillis, Warren S  
 •Hilmes, Samuel  
 •Hinchey, John J  
 •Hinrichs, Willie  
 •Hlavka, Emil  
 Holliday, Lonnie  
 Holmes, Ernest  
 Holmes, John C  
 •Howe, Clinton  
 Howes, Guy  
 Hughes, John W  
 Huntington, Willie  
 Ivins, Orville  
 •Jaynes, Arthur  
 Jessen, Hans  
 Johnson, Ernest  
 Johnson, Herman  
 Johnson, Hosea  
 Johnson, Ronald  
 •Jorgensen, Arthur  
 •Kalla, Joe  
 •Kasper, Frank  
 •Kaufmann, Henry A  
 •Kavan, Frederick  
 Kelley, Robert  
 Keller, Frank

•Kendis, Michael  
 •Kiger, Lola A  
 •Knottell, Ralph  
 •Kuhn, Emil  
 •Kuppig, John  
 •Lancaster, Harry  
 •Lanktree, Hugh  
 Larsen, Fritz  
 •Leary, C B  
 Lehmer, Herman  
 Lenon, Ray  
 Long, Henry  
 London, Max  
 Lundberg, George C  
 •Lupinski, Harry  
 •Lyman, Gene D  
 Lynn, Fred  
 Lytle, Frank  
 •McDiarmid  
 •McIlvaine, F B  
 •McKinlay, Arthur  
 McNair, David  
 McNeil, Charles  
 •Mangan, Lawrence  
 •Malchin, Max  
 Marston, Earl  
 Martin, Gaylord  
 •Metzler, Irving  
 Meyer, Samuel  
 Meyer, Walter  
 Miller, Elmer  
 •Minds, H  
 Moore, Wm G

Moorehead, Robert  
 Mosely, John  
 Morrow, Ralph  
 •Mullen, John  
 Mullen, Wm F  
 Myers, Frank  
 •Myers, James  
 Naughton, Fred  
 Neal, Wilbur  
 Neely, Fay  
 •Nelson, Arthur  
 •Nielson, Otto  
 Nilsson, Henry  
 Norton, James P  
 •Norton, Ralph  
 O'Neal, Hugh  
 Owen, Clarence J  
 Painter, Earl  
 Parker, Channing  
 Parker, George  
 Paul, Carl  
 •Percival, Claude  
 Philig, Oscar  
 Pierce, Roy G  
 Polcar, Oliver  
 •Pickard, Byron  
 •Pomy, George  
 Potwin, Robert  
 Powell, Percy  
 •Prohaska, Raymond  
 Rasmussen, George  
 Rathlef, August W  
 Reed, Philip S

Robertson, John  
 •Romigh, Chester  
 Redell, Harry  
 Reed, Harry  
 Rumbel, Manly C  
 •Russell, Kenneth  
 Sabine, Leslie  
 •Salisbury, Fred  
 Sanderson, George  
 Schreiber, Arthur  
 Scott, Harry  
 Shultz, Axel  
 Secrist, Court  
 Showers, Harry  
 Sidwell, Lawrence  
 •Slavin, F J  
 •Slossburg, Jacob  
 •Small, Frank  
 •Smith, Bradley  
 •Smith, Thomas  
 Sorenson, Nels  
 Spafard, Victor  
 Spethmann, Oscar  
 Sroufe, Charley  
 Stephenson, Wm  
 Stubbs, David  
 Stroop, Landrey  
 Sutherland, Webster  
 •Sutter, Charley  
 Swan, Alfred  
 •Swaboda, Otto  
 •Taylor, Forest  
 Thompson, Arnold

Nicoll  
THE TAILOR



# Who's Your Tailor?

Nicoll, The Tailor, is recognized as the "young man's tailor." By paying close attention to the small details of Tailoring—you can feel confident that Nicoll's garments are always up to the top notch of style.

Our salesmen take delight in showing the new fabrics. They will be pleased to instruct you regarding the little changes that occur from season to season.

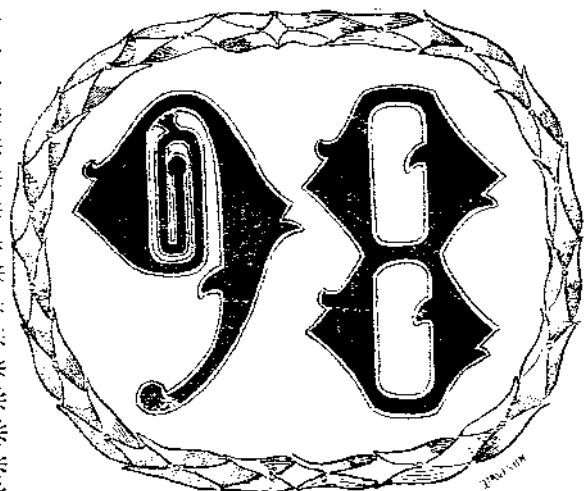
Trousers to Order, \$4, 5, 6, 7, 8, 9.  
 Suits to Order, \$15, 20, 25, 30.  
 Overcoats, \$15, 20, 25, 30

**NICOLL, THE TAILOR,**  
KARBACH BLOCK

209 and 211 South 15th Street.

CLASS  
OF

COMMENCEMENT  
PROGRAM



Omaha  
High  
School

Saturday Evening,

8:15 P. M.

JUNE 11, 1898.

Boyd's Theatre.



# Omaha High School.

CLASS OF '98.

CLASS MOTTO: "Progre<sup>d</sup>iamus, regredi non possumus."

CLASS COLORS: Garnet and White

## Senior Class.

### GIRLS.

Allen, Irene Mae  
Anderson, Marjorie P.  
Aust, Ada  
Austin, Mary N.  
Barnhart, Iona  
Barratt, Bessie M.  
Barratt, Prudence L.  
Bechel, Lucy H.  
Berka, Bertha  
Blake, Annette  
Blakeslee, Adelaide  
Brandeis, Helen  
Burgess, Edith I.  
Burgstrom, Aurora C.  
Case, Bertha  
Chambers, Bessie M.  
Covell, Anna  
Craig, Nellie  
Daniel, Iona I.  
Daniel, Louella  
De Bolt, Martha  
Dorsey, Nancy Lux  
Drage, Elizabeth S.  
Elliott, Georgie  
Ellsworth, Mary E.  
Emerson, Agnes W.  
Everingham, Winifred L.  
Goetz, Jessie  
Griffith, Mary Vivian  
Gsantner, Camilla L.  
Gunther, Henrietta  
Haislip, Georgia Belle  
Hardin, Hallie M.  
Hoffmayer, Julia M.  
Homelius, Martha M.  
Horn, Nellie M.  
Hunter, Laura Cordelia  
Ivey, Agnes Edna  
Ittner, May F.  
Jackson, Edith  
Jaynes, Herberta E.  
Jensen, Rhena  
Johnson, Mary Wood  
Kerr, Lissie L.  
Kessler, Celia Rose  
Killian, Victoria  
Lieber, Barbara  
Mack, Lucy M.  
MacMillan, Elinore  
McNair, Hannah Louise  
Macomber, Gertrude E.  
Macomber, Maude C.  
Mathis, Edith  
Maxwell, Elizabeth M.  
Murphy, Clara B.  
Nelson, Mary I.  
Parker, Emma Wheeler  
Patterson, Oma B.  
Porter, Grace Abbott  
Potter, Faith  
Randall, Florence  
Rasmussen, May E.  
Reed, Marion Isabel  
Roys, Dora C.  
Sandberg, Edith Lora  
Smith, Mildred E.  
Snell, Lillian Edna  
Spencer, Edith D.  
Tompsett, Aggie  
Urlau, Claudia W.  
Vodicka, Mamie B.  
Wilhelmy, Winifred  
Young, Dorothy A.

### BOYS.

Anderson, Anthon E.  
Anderson, James  
Chambers, Willard  
Chisam, Arthur J.  
Clarke, Louis Samuel  
Coffman, Thos. J. H.  
Cortelyou, Spencer V.  
Cuscaden, Frederic A.  
Everts, Charles P.  
Fonda, William B.  
Glann, Milton H.  
Groh, Abe R.  
Helquest, N. O. A.  
Johnston, Wylie  
Johnson, J. Cook  
Koetter, Max  
Manchester, Frank Paul  
Mathews, Elfred P.  
Neschadek, Joseph  
Potter, Aubrey  
Robison, Robert L.  
Runigh, J. Victor  
Rood, Elmer S.  
Rosicky, John G.  
Schwartzlander, Joseph S.  
Soderholm, Edward  
Swenson, John S.  
Whurton, Gerald A.

# Programme Graduating Exercises.

## PART I.

March	Garde du Corps	R. B. Hall
	DIMMICK'S ORCHESTRA.	
Essay	Some Movements in American Fiction	
	MISS EDITH JACKSON.	
Original Poem	The Birth of the Water Lily	
	MISS MARION REED.	
Piano Duet, March	Characteristique, Op. 121, No. 1, <i>Franz Schubert</i>	
	MISS NANCY DORSEY.	
	MISS VICTORIA KILLIAN.	
Oration	Sources of National Power	
	MR. GERALD WHARTON.	
ESSAY	Mrs. Socrates	
	MISS GRACE PORTER.	
Medley	Selection	F. Beyer
	DIMMICK'S ORCHESTRA.	

## PART II.

Oration	The American Spirit of Fair Play	
	MR. CHARLES EVERTS.	
Essay	The Heroine of the Novel	
	MISS MARY WOOD JOHNSON.	
Piano Solo	Ye Boston Tea Party	Pryor
	MR. FREDERIC CUSCADEN.	
Essay	Matthew Arnold as Seen in His Essays	
	MISS LOUISE MCNAIR.	
Oration	A Defense of the Classics	
	MR. JOHN SWENSON.	
Waltz		Geier
March	America Forever	
	DIMMICK'S ORCHESTRA.	
Presentation of Diplomas and Address to Graduates		
	R. C. JORDAN, President Board of Education.	
	The Krabe Grand Piano furnished by A. Hospe.	

# Board of Education.

RICHARD C. JORDAN—President.  
CHARLES H. GRATTON—Vice President.  
ANDREW KIEWIT.  
GEORGE L. DENNIS.  
G. G. IREY.  
JAMES E. VANGILDER.  
J. C. MOORE.  
H. J. PENFOLD.  
GEORGE H. HESS.  
A. W. JOHNSON.  
FRANK A. SEARS.  
A. A. BUCHANAN.  
J. F. BURGESS.  
B. F. THOMAS.

## Officers.

CARROL S. PEARSE—Superintendent Instruction.  
J. M. GILLAN—Secretary.  
ALBERT G. EDWARDS—Treasurer.  
H. J. BANKER—Superintendent Buildings.  
FRANK H. GAINES—Attorney.

## Faculty.

### Omaha High School.

Irwen Leviston	M. Alice Landis	Grace B. Sudborough
Kate A. McHugh	William M. McClintock	Jessie Towne
Earl J. Kelsey	Johanna von Mansfield	Georgia Valentine
Anna T. Adams	Rowena Morse	Suzanne A. Walker
S. DeWitt Beais	Antoinette Ogden	Janet M. Wallace
Nathan Bernstein	Maria Okey	Myrtle I. Wheeler
William E. Brook	Susan Paxson	John E. Wigman
Carrie O. Brown	Laura Pfeiffer	Joseph F. Woolery
May L. Copeland	Mary E. Quackenbush	H. A. Senter
Mrs. Elizabeth Craven	Elizabeth Roudsbush	J. Irving Read
C. Belle Dintneff	Luey J. Roys	Ethel Evans
Bertha G. Green	Villa B. Shipper	George R. Rathbun
Decia A. Johnston	Bessie J. Snyder	Lient. W. A. Campbell